

## Instructions to authors

All material submitted for publication is assumed to be submitted exclusively to the *BMJ* unless the contrary is clearly stated. All named authors must give signed consent to publication. Manuscripts will not be acknowledged unless the author encloses a stamped addressed postcard.

Original articles are usually up to 2000 words long, with no more than six tables or illustrations; they should normally report original research of relevance to clinical medicine. Short reports are up to 600 words in length, with one table or illustration and no more than five references; clinical case histories, side effects of drugs, and brief or negative research findings may appear in this section. Medical practice articles are mostly written by invitation, but we welcome reports of 2000 words about the organisation or assessment of medical work in hospitals and general practice and about sociological aspects of medicine. Contributions for the Personal View and *Materia Non Medica* columns are always welcome, and should contain up to 1150 and 400 words, respectively. Letters should be of not more than 400 words, and short letters have a better chance of publication than long ones.

### Manuscripts

Authors should keep one copy of their manuscripts for reference. Two copies should be submitted, typed double or treble spaced on quarto or A4 paper; margins of 5 cm should be left at the top of the page and on its left-hand side. Pages should be numbered. The title should be brief and informative. Details of the authors should include their names and initials, no more than two degrees for each author, and current appointments. Original articles should conform to the conventional structure of summary, introduction, methods, results, discussion, and references. Spelling should conform to *Chambers Twentieth Century Dictionary*. Abbreviations should be spelt out when first used in the text. Numerals under 10 should usually be spelt; those of 10 and over should be typed as figures except at the start of a sentence (Thirty of the 54 patients...). Scientific names giving genus and species should be italicised (underlined in typescript) with an initial capital; use abbreviations only after the first mention: *Escherichia coli*, then *E. coli*. Scientific measurements should be given in SI units followed, in the text, by traditional units in parentheses; in tables and illustrations values should be expressed only in SI units, but a conversion factor should be given. A full account of the system appeared in the *Journal of Clinical Pathology*, 1974, **27**, 590. (Reprints are available from the publishing manager, *BMJ*, at 50p.) There are two exceptions: blood pressure should be expressed in mm Hg and haemoglobin as g dl. Full points should not be used after contractions or abbreviations: FRCS, 17 g dl, Dr, *et al*, etc.

### Statistics, tables, and illustrations

Any statistical procedures used should be detailed in the methods section of the paper, and any not in common use should be either described in detail or supported by references.

Two copies of all tables and illustrations should be submitted, separate from the text of the manuscripts, and legends to illustrations should also be typed on a separate sheet. Tables are numbered with roman and illustrations with arabic numerals. Tables should be simple and brief and should not duplicate information in the text of the article. Illustrations should be used only when the data cannot be expressed clearly in any other way. When graphs or histograms are submitted the numerical data on which they are based should be supplied, so that they are available should the illustration need to be redrawn. Line drawings should be in indian ink on heavy white paper or card; any labelling should be on a copy, not on the original illustration. Other illustrations should usually be prints, not negatives or colour slides or x-ray films; they should not be larger than 30 × 21 cm (A4). They should be trimmed to remove all redundant areas, and an indication of the top given on the back of the print. Staining techniques and the magnification of photomicrographs should be stated. Again, any labelling should be on copies, not on the prints themselves. Photographs of patients should be accompanied by written permission from the individual or his parents or guardian for reproduction in a journal; the eyes should be masked unless they are the point of interest in the picture, when the patient's identity should be concealed in some other conventional way. If any tables or illustrations submitted have been published elsewhere written consent to republication should be obtained by the author from the holders of the copyright (usually the authors and the publishers).

### References

References should be numbered in the order in which they appear in the text, and these numbers should be inserted above the line on each occasion the author is cited (Manson<sup>1</sup> confirmed other reports<sup>2-5</sup>...). At the end of the article the full list of references should give the names and initials of all authors (unless there are over three, when only the first need be given, followed by *et al*). The authors' names are followed by the full title of the journal, with the year of publication, volume, and page number. Book titles should be followed by the place of publication, publisher, and year:

- Lawson, H E, and Devereaux, Q, *Journal of Mediaeval Medicine*, 1904, **3**, 217.  
 Stansgate, E P J, *The Diagnosis of Fevers*. Glossop, Harebell Press, 1975.

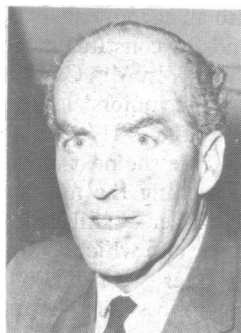
### Proofs and reprints

After acceptance of an article or report the manuscript will be prepared for press. Manuscripts of articles and reports should bear the name and address of the author to whom the proof is to be sent. Most letters are printed without the author seeing a proof: if the text is heavily edited a copy of the revised manuscript will be sent to the author for his approval. Proof corrections should be kept to a minimum—proofs are not the place for second thoughts on literary style—and should conform to the conventions described in *Whitaker's Almanack*. After 1 January free reprints will not be supplied, though these will be available at cost of any article, report, or letter; a scale of charges is included when a proof is sent.

statement will be fully considered by junior hospital staff and was not binding upon them until they had made a decision on its detailed proposals. Indeed, further clarifying talks have already taken place with the Department. The Council expressed its full support for the actions of the committee, from which it will receive a further report at its next meeting on 7 January."

### Medical life peer

Among the new life peers announced on 17 December was Dr M P Winstanley, formerly



Liberal member of Parliament for Cheadle and later Hazel Grove. Dr Winstanley was born in 1918 and educated at Manchester Grammar School and Manchester University, where he was president of the union and captained the cricket club. He qualified in 1944

and entered general practice in 1948. In 1957 he began broadcasting on medical topics and later appeared on his own television programmes on both ITV and the BBC. He was active in the Manchester Division of the BMA from 1957 to 1965. He contested his first parliamentary election in 1964 and was elected as MP for Cheadle in 1966. He was defeated in the second general election in 1974. He has published several books on medicine and written on cricket for the *Manchester Evening News*. Dr Winstanley is married with three children.

### Drug statistics

There were 1980 narcotic addicts in the United Kingdom at 31 December 1974, according to Home Office statistics. This is a rise of 9% since the same date in 1973. New notifications totalled 887, a rise of 10%. Most addicts are in their mid-twenties, although 24% of the women notified were aged over 50.

The number of persons found guilty of offences against the drugs Acts was 11 423, a fall of 27% from the 1973 total: these offences include supply and possession of cannabis. Convictions for offences concerned with importation of drugs (mostly cannabis) rose by 11% to a total of 405.

## SOCIETIES AND LECTURES

### Thursday, 8 January

MEDICO-LEGAL SOCIETY—At Royal Society of Medicine, 8.15 pm, the Hon Mr Justice Cusack: A Gloucestershire murder: R v Brittle.

ROYAL COLLEGE OF PHYSICIANS OF LONDON—5 pm, Marc Daniels lecture by Professor D D Reid: The social background of bronchitis.

ROYAL COLLEGE OF SURGEONS OF ENGLAND—5 pm, Arris and Gale lecture by Mr S P F Hughes: The extraction by bone and the clearance by the tissues of technetium labelled ethane-1-hydroxy-1, 1-diphosphate.

### Friday, 9 January

INSTITUTE OF LARYNGOLOGY AND OTOTOLOGY—5.30 pm, Mr J B Booth: Vertigo—surgical, anatomy and pathology.

## COMING EVENTS

**Institute of Urology**—Day conference "Cost effective or care effective? A question for our time," 24 January, London. For details see advertisement at p vi.

## BMA NOTICES

### Reconstitution of the Dumfries and Galloway Division

Notice is hereby given by the Council to all concerned that the Dumfries and Galloway Division as specified in the Schedule published in the *BMJ* on 31 August 1974 (p 587) has been dissolved and reconstituted as two divisions with the following titles and areas:

**Dumfries and Stewartry Division** composed of the local authority areas of Nithsdale, Annandale, and Stewartry in the area of the Dumfries and Galloway Health Board.

**Wigtownshire Division** composed of the local authority area of Wigtownshire in the area of the Dumfries and Galloway Health Board.

DEREK STEVENSON,  
Secretary

### Diary of Central Meetings

	JANUARY
6 Tues	Scottish Committee for Hospital Medical Services (7 Drumsheugh Gardens, Edinburgh EH3 7QP), 10.45 am.
7 Wed	Council, 10 am.
8 Thurs	General Purposes Subcommittee (GMS), 10.30 am.
8 Thurs	Working Party on Services for the Elderly (Board of Science and Education), 10.30 am.
9 Fri	Scottish Committee for Community Medicine (7 Drumsheugh Gardens, Edinburgh EH3 7QP), 10.45 am.
11 Sun	Welsh Committee for Hospital Medical Services (Hotel Metropole, Llandrindod Wells), 2 pm.
14 Wed	Scottish Council (7 Drumsheugh Gardens, Edinburgh EH3 7QP), 10.45 am.
14 Wed	Welsh Committee for Community Medicine (Hotel Metropole, Llandrindod Wells), 2.30 pm.
15 Thurs	Executive Subcommittee (CCHMS), 10 am.
15 Thurs	General Medical Services Committee, 10 am.

### Branch and Division Meetings to be Held

Members proposing to attend meetings marked\* are asked to notify in advance the honorary secretary concerned.

**Blackpool and Fylde Division**—At Savoy Hotel, Blackpool, Wednesday, 7 January, 8.45 pm, Dr W G F Adams: "Recent advances in industrial toxicology." (Preceded by dinner, 7.30 pm.\* Guests are invited.)

**East Berkshire Division**—At King Edward VII Hospital, Windsor, Wednesday, 7 January, 7.45 pm, agm followed by open meeting on the political background to the NHS crisis. Speaker Dr J D J Havard.

**Hereford and Worcester and Bromsgrove Divisions**—At Ronkswood Hospital, Tuesday, 6 January, 8.30 pm, open meeting to all doctors on the hospital crisis.

**Lancaster Division**—At Strathmore Hotel, Friday, 9 January, 8 for 8.30 pm, annual dinner dance.\*

**Nottingham Division**—At Nottingham City Hospital, Thursday, 8 January, 8.30 pm, business meeting.

**Wigan Division**—At Haigh Hall, Thursday, 8 January, 7.30 pm, combined meeting with Wigan Law Society.\*

## UNIVERSITIES AND COLLEGES

### CAMBRIDGE

MD—V S Chadwick, Shirley J Richmond, A M Zalin.

### MANCHESTER

MD—W V Humphreys, T W Warnes.

### LEEDS

MD—Mary E Brennan, M D Rawson.

## ROYAL COLLEGE OF SURGEONS OF ENGLAND

At an ordinary meeting of the council held on 11 December, with Mr R H Franklin, senior vice-president, in the chair, the honorary medal of the college was awarded to Professor L N Pyrah. Mr Leonard Wolfson was elected to the Court of Patrons.

The election of the Rt Hon Lord Brock of Wimbledon as chairman of the board and the election to the board of trustees of the Hunterian Collection of Sir John Summerson and Mr R V Cooke, and the award of the Colyer gold medal to Professor C F Ballard were noted.

Professor A S Prophet was appointed Charles Tomes lecturer for 1977. The appointment of Mr B W Fickling as Webb-Johnson lecturer for 1976-8 was noted. The award of the Faculty of Anaesthetists Fellowship Prize to Dr L J Williams was noted.

## ROYAL COLLEGE OF PSYCHIATRISTS

The following were successful at the recent examination for membership of the college:

D J Aldridge, S M Alexander, A H Al-Kaisi, M R Almudevar, F A W Al-Sudani, C J Andrew, P D Bartlett, A R Bedi, G S Bhatt, S A Bokhari, T P Burns, C A D Calvert, J A Causton, J L Chakravarti, B W Chenoweth, N J Child, Jean I Coleman, A F Colgan, C J Cooper, Sherv E Cooray, B J S Craig, Helen M Cumiskey, P S Curran, A E Daniel, J R Dare, Mary S Davies, N S Davies, M S Dayal, M G Duke, J A T D Ehsanullah, N A Elias, E J Elliott, L H Fagin, I R H Falloon, R G Farquharson, A F Francis, C P Freeman, Maria E Garraza, G S Gnanasingham, Sandra M Grant, R K Gupta, S J Harris, F Hassanyeh, Ruth M Hiron, J A Holmes, A V M Hughson, K R Hyde, Eleanor Hyland, N O Iechuku, GH Jones, Margaret Kay, K A Kilbride, Helen E Kirk, Winnie Kuttappa, P T-C Lam, M A Launer, Ann G Lewis, Lo Chun Wai, N Longhurst, Katherine E Lubbe, Eloise M L Lucas, D Macdiarmid, Hilde P G McIlvenna, Heather J McKee, A J Mackie, A L MacNeill, S N Mahapatra, A M Margo, G U Mehta, A Michalakas, Judith R Morgan, Linda A Morse, P K Mukherjee, Elaine Murphy, J E Olive, K N Padamsee, T Pastor, R G Potter, G P Pullen, P M Rauchenburg, P Reder, T M R Riazuddin, Pauline H Salmons, J T Schofield, Ruth Seifert, P Sepping, A McC Sim, H G Smith, T Sriranganatha, M J Stevens, Gillian Stratford, Tan Chue Tin, E A Taylor, A F Teggins, S Thirumalachari, Mary McN Tomlinson, M R Trimble, R Tym, Margaret M Walker, Malcolm Weller, J N Westhead, A J Williams, R D Winter, M B Younan, Z A J Zaidan.

## APPOINTMENTS

HAMPSHIRE AREA HEALTH AUTHORITY (TEACHING)—Dr P M Ashurst (consultant psychotherapist).

## Corrections

### Junior hospital staff contract

We regret that in his letter to the Editor (27 December p 762) the signature of Dr P J Milewski was incorrectly spelt.

### Hospital discharge reports: content and design

In this article (on 22 November, p 443) in the acknowledgments at the end Dr R T Mayon-White's name should be substituted for that of Dr R M Mayon-White.

## Notice for authors

When original articles and letters for publication are not submitted exclusively to the *British Medical Journal* this must be stated. For detailed instructions to authors see page 6 of this issue.

Correspondence on editorial business should be addressed to the Editor, *British Medical Journal*, BMA House, Tavistock Square, London WC1H 9JR. Telephone: 01-387 4499. Telegrams: *Aitology, London WC1*. Communications will not be acknowledged unless a stamped addressed postcard is enclosed.

Authors wanting reprints of their articles should notify the Publishing Manager, BMA House, Tavistock Square, WC1H 9JR, on receipt of proofs.

## © British Medical Journal 1976

All Rights Reserved. No part of this publication may be reproduced, stored in a retrieval system, or transmitted, in any form or by any means, electronic, mechanical, photocopying, recording or otherwise, without the prior permission of the *British Medical Journal*.