



SCHALL & SON

Established 1887.

MANAGING PARTNER: W. E. SCHALL, B.Sc.(Lond.)

THE PANTOSTAT

EARTH FREE UNIVERSAL APPARATUS

Generating Currents for

Cautery, Light, Galvanism and Faradism,
and Supplying Power for

Lewis Jones and Leduc Interrupters,
Pumps, Massage Apparatus, Drills, Burrs, &c.

Made throughout at our Workshops at

71/75, NEW CAVENDISH STREET, LONDON, W.

A Complete List of X-ray and Electro-therapeutic Apparatus
will be sent free to any Medical Man desiring it.

PURVEYORS BY SPECIAL APPOINTMENT TO
H.I.M. THE EMPRESS OF RUSSIA.
90 YEARS' REPUTATION.
GOLD MEDALS, LONDON, 1900, 1906, 1914; ALSO PARIS.



Neave's Foods



NEAVE'S MILK FOOD

(Starchless) for Babies from Birth.

Dr. —, D.Sc. Ed., B.Sc., M.D., M.B., C.M., D.P.H. (Park Lane, W.), writes: "My baby girl is thriving admirably on your Milk Food . . . The mother was unable to feed her and previously tried other Infants' Foods without success." February 25, 1914. " . . . I take every opportunity of recommending both your Milk Food and Cereal food as the best scientific food where breast feeding is contra indicated." June 11, 1914.

Dr. —, D.Sc., M.D., D.P.H., Public Health Laboratories, London, reports: "When diluted with 7 or 8 parts of water the mixture would closely resemble human milk in composition. The fat would then be about 3 per cent. This is very satisfactory."

Dr. —, M.D., M.R.C.P., etc., writes: "Have prescribed your Milk Food frequently . . . easily digested . . . without any after acidity, which is common with Foods containing alkaline elements, and I shall recommend it further."

Instantly prepared by adding hot water only. SOLD IN 1/3 TINS.

NEAVE'S FOOD (Cereal)

FOR INFANTS AND INVALIDS.

When prepared with cow's milk according to the directions given, forms a complete diet for Infants, Invalids, and the Aged.

Dr. —, L.R.C.P., L.R.C.S. Ed., L.F.P.S. Glas., etc., (Leeds), writes: "Your Neave's Food is suiting our youngster admirably, for which we are very thankful . . . she was not doing well on cow's milk and water alone." September 10, 1913.

Dr. — "As regards the proportion of flesh-forming Albuminoids and the bone-forming salts, there exists a perfect uniformity between Neave's Food and Mother's Milk."

"The Medical Magazine."—The starch is so split up that, after cooking, no evidence of its presence can be detected by the microscope, thus doing away, in this particular instance, with the objection that foods containing starch are not digested by very young children."

USED IN THE RUSSIAN
IMPERIAL NURSERY.

Sold in 1/- & 2/6 Tins, also in 4d. Packets.

NEAVE'S HEALTH DIET

(MILK and CEREAL) For Nursing Mothers, Dyspeptics, and the Aged.

Provides full and exact nourishment at the expense of small exertion on the part of the digestive organs. Its flavour is delicious, and therefore acceptable to those who dislike the usual form of "gruel," besides being more easily made and not needing the addition of milk. Being unsweetened it can be taken in those cases where sugar in any form is prohibited. As a change from porridge it will be found very beneficial at breakfast for growing and delicate children, who eagerly take it up. Elderly people and others will find it excellent as a "light" supper, inducing natural sleep.

A lady writes (name given on application): "I have found your Health Diet most invigorating, yet restful, and as regards the nervous system it is a splendid tonic." Feb. 22, 1915.

A District Nurse, Leeds, writes: "Have just recovered from an attack of gastric trouble . . . have principally to live on milk food, and find Neave's Health Diet not so constipating as milk usually is when taken alone."

SOLD IN 1/3 AND 3/6 TINS.

Samples sent free on receipt of Professional Card, mentioning "British Medical Journal."—JOSIAH R. NEAVE & CO., FORDINGBRIDGE, ENGLAND.

From Mr. EDWARD ARNOLD'S LIST

NOW READY.

Nervous Diseases and War.

A NEW AND ENLARGED EDITION CONTAINING, BESIDES OTHER ADDITIONS, MUCH VALUABLE NEW INFORMATION RELATING TO ORGANIC LESIONS OF THE NERVOUS SYSTEM CAUSED BY WOUNDS AND SHOCK.

THE DIAGNOSIS OF NERVOUS DISEASES

By PURVES STEWART, C.B., M.A., M.D.(Edin.), F.R.C.P.,

Physician to the Westminster Hospital; Joint Lecturer on Medicine in the Medical School; Physician to the West End Hospital for Nervous Diseases; Membre Correspondant de la Société de Neurologie de Paris; Corresponding Member of the Philadelphia Neurological Society; Consulting Physician to H.M. Forces; Temporary Colonel, A.M.S.

With 283 Illustrations from Original Diagrams and Clinical Photographs. 589 Pages.

Medium 8vo. 18s. net. FOURTH EDITION.

In presenting this new Fourth Edition it may be mentioned that the object of the author of the work has been to produce a practical book which should supplement the more didactic treatises by discussing groups of symptoms as met with in every-day practice. The present edition differs considerably from its predecessors, as the various advances necessitated the re-writing of the bulk of the book, particularly the parts dealing with cerebellar lesions, the neuroses, the vegetative nervous system, &c.

For the last year or more the author has been attached as Consulting Physician to His Majesty's Forces in the Mediterranean and has had exceptional facilities for the study of nervous diseases in war.

A new chapter on War Neurology now appears, and the whole of the book has been thoroughly revised in the light of recent investigations.

A System of Clinical Medicine

By THOMAS D. SAVILL, M.D.

New and Revised Edition (Fourth).

963 pages.

8vo.

25s. net

The Practice of Surgery

By RUSSELL HOWARD, M.S.Lond., F.R.C.S.Eng.,

Surgeon, Poplar Hospital; Assistant Surgeon, London Hospital.

1237 pages.

531 Illustrations.

21s. net.

A Manual of Gynæcology

By SAMUEL J. CAMERON,

Gynæcologist and Assistant Obstetric Surgeon to the Royal Glasgow Maternity and Women's Hospital.

Fully Illustrated.

568 pages.

18s. net.

A Manual of Pharmacology

By WALTER E. DIXON, M.A., M.D.,

B.Sc.Lond., D.P.H.Camb., Examiner in Pharmacology in the Universities of Cambridge and Glasgow.

xii. + 451 pages.

Fourth Edition (New).

15s. net.

Medical Nursing

By A. S. WOODWARD, M.D., B.S.Lond., M.R.C.P.Lond.,

Lecturer on Medical Nursing, and Physician to the Royal Waterloo Hospital and Miller General Hospital for South-East London; Medical Tutor to King's College Hospital.

xi. + 324 pp.

4s. 6d. net.

Surgical Nursing and the Principles of Surgery for Nurses

By RUSSELL HOWARD, M.B., M.S., F.R.C.S.,

Assistant Surgeon to the London Hospital, and Lecturer on Surgical Nursing to the Probationers of the London Hospital.

xvi. + 318 pp.

6s.

A Practical Handbook of Surgical After-Treatment

By ALAN H. TODD, B.Sc., M.S.Lond., F.R.C.S.Eng.,

Surgical Registrar and Tutor, Guy's Hospital.

264 pages.

4s. 6d. net.

Midwifery for Nurses

By H. R. ANDREWS, M.D., B.Sc.Lond., M.R.C.P.Lond.,

Assistant Obstetric Physician to the London Hospital; Examiner to the Central Midwives Board.

Fully Illustrated.

4s. 6d. net.

London: EDWARD ARNOLD, 41 & 43, Maddox Street, Bond Street, W.

NOW READY. SIXTEENTH EDITION (1915). IN TWO VOLUMES.
Complete, Two Vols. 21s. net; postage, 5d., abroad, 6d. Separately, Vol. I., 14s. net, postage, 5d.; Vol. II., 7s. net, postage, 3d.



THE EXTRA PHARMACOPŒIA.

By MARTINDALE and WESTCOTT.

"It is a book that is indispensable to the modern pharmacist, and in this case an old edition is not 'just as good.'"—*Chemist and Druggist*.

"The two volumes together form an invaluable compendium of information."—*British Medical Journal*.

"A work of great utility."—*The Lancet*.

"The Extra Pharmacopœia maintains its high standard and more. All interested will welcome this new edition of an indispensable book."—*Pharmaceutical Journal*.

LONDON: H. K. LEWIS & CO. LTD., 136 GOWER STREET, W.C.

NOW READY. PRICE 15s. net; POST FREE (inland) 15s. 7d.

SQUIRE'S COMPANION

TO THE
BRITISH PHARMACOPŒIA, 1914

Published by

J. & A. CHURCHILL, 7, GREAT MARLBOROUGH STREET, W.

An ENCYCLOPEDIA of information for PRESCRIBER and DISPENSER.

An up-to-date review of over half-a-century's progress in THERAPEUTICS, CHEMISTRY, and PHARMACEUTICS.

A systematic and critical record of the changes in the new B.P.

A comparison and criticism of the BRITISH and the chief CONTINENTAL PHARMACOPŒIAS.

Descriptive leaflet gratis on application.

Telephones:—PADD. 96; GERRARD 3485; MAYFAIR 3479.

Telegrams:—SQUIRE, WESDO, LONDON.

SQUIRE & SONS, LTD. 413, OXFORD ST., LONDON, W.

Chemists on the
Establishment of the King.



Full prospectus from The Secretary,
GUY ELLISTON, 429, Strand, W.C.

THE "WHITE CROSS" DOCTOR'S POLICY

SPECIAL BENEFITS

— FOR —

MEDICAL MEN ONLY.

APPROVED BY

THE MEDICAL INSURANCE
AGENCY.

FREYER'S ENLARGEMENT OF THE PROSTATE.

With a Description of the Author's Operation of
Total Enucleation of the Organ.

A Work based on 800 Cases of the Operation.
3RD EDITION. With 54 Illustrations. Price 3/- net.
SURGICAL DISEASES OF THE URINARY
ORGANS, with 141 Illustrations. Price 12/6 net.

BAILLIÈRE, TINDALL & COX,
8, Henrietta Street, Covent Garden, London.

1/- TRUSSES 1/-

APPLICATION OF, TO HERNIÆ.

By JOHN WOOD, F.R.S., F.R.C.S.

With Illustrations.

London: MATTHEWS BROS., 10, New Oxford St., W.C.

STAMMERING, CLEFT PALATE, SPEECH, and LISPING.

By Mrs. EMIL BEHNKE.

Price 1s. net, postage 1d., of Mrs. EMIL BEHNKE,
18, Earl's Court Square, S.W., who receives stam-
merers for treatment. References to Doctors whom
Mrs. BEHNKE has cured, and others.

ST. JOHN AMBULANCE ASSOCIATION.

INVALID TRANSPORT SERVICE (under the patronage
of many leading physicians and
surgeons), for the conveyance of
sick and injured patients (infec-
tious cases excepted) to and from
all parts. The Association has a
fully-trained Staff and all the
necessary appliances.—For per-
ticulars, apply to the Transport
Manager, St. John's Gate, Clerk-
enwell, E.C.—Telegraph: "Firstaid,
London." Phone: 861 Holborn.



FORD Cars with OFFORD Bodies.



The Car for the Profes-
sional Man. Wonderful
value. 6 different styles.
Deferred payments.
Catalogues free.

OFFORD & SONS,
67, George St., Portman
Square, LONDON.

Garage—Portman Mews North. Phone: 99 Pad.

STANDARD

LIGHT CAR



STANDARD
MOTOR CO. LTD.
COVENTRY

ALLIANCE DRUG AND CHEMICAL CO.

24, Londonhall St., London, E.C.

Established 1812—Reorganised 1892.

The Company specializes in providing the Medical profession at the lowest possible inclusive prices (no charge for Bottles, &c., or Cases, &c.) with pure and reliable Drugs, Chemicals, Pharmaceutical Preparations, Compressed Tablets, Pills, Surgical Dressings, and Stock Mixtures of approved Formulas as used by the London and other Hospitals.

We append a few sample prices for guidance of the great saving that can be effected, and in many instances our Clients have written us stating we have saved them

40 per cent.

of their usual Yearly Account for Drugs. This saving is not reflected in the quality of our Goods, but is primarily due to not employing TRAVELLERS, thus saving the purchaser the cost of the Travellers' Salaries and expenses which greatly enhance the prices the usual Drug Houses have to charge.

NOTE.—Only Terms Net Cash with order without discount, or orders received through London Merchants or Bankers. Goods carriage forward. All packages free. Export cases extra.

**OUR NEW DETAILED PRICE LIST
WILL BE ISSUED AS SOON AS
POSSIBLE, WHEN COPY WILL BE
SENT ON RECEIPT OF A PRO-
FESSIONAL CARD.**

INFUSIONS CONCENTRATED. 1-7 in 6lb. Bottles.

Aurant @ 1/8 lb. Gentian @ 1/3 lb.
Aurant Co. @ 1/7 lb. Ibel @ 1/9 lb.
Columbus @ 1/1 lb. Senega @ 2/7 lb.
Cinchon Acid @ 1/10 lb.
Lassar's Paste, 14 lbs. @ 1/5 lb.; 1 lb. @ 1/8 lb.
*Lin. Belladonna Meth., 5 lbs. @ 8/3; 1 lb. @ 8/6 lb.
*Liq. Ether Nitros (Sp. Ether Nit. Substitute)
7 lb. @ 1/6 lb.
*Liq. Ammon. Acet. Conc. (1-7), 6 lb. @ 1/5 lb.
Aromat., 6 lbs. @ 10d. lb.
Morph. Hydrochlor. P.B., 1 oz. @ 15/3 oz.
Petroleum Jelly Flav. P.B., 7 lbs. @ 6d. lb.

PILLS TASTELESS COATED.

Potass. Iodid. P.B., 3 lbs. @ 18/- per lb.
Soda Sulphate Feathery cryst., 7 lbs. @ 3d. lb.
Sp. Ether Nit. P.B., 4 lbs. @ 4/5 lb.; 1 lb. @ 4/10
Sp. Almon. Aromat. P.B., 5 lbs. @ 3/9 lb.
Syr. Caecum Aromat. P.B., 6 lbs. @ 1/7 lb.
Glycero-Phosph. Co., 6 lbs. @ 1/10 lb.

SYRUPS.

Aurant, P.B., 7 lbs. @ 1/- lb.
Benton, B.P., 7 lbs. @ 1/3 lb.
Ferri Iodid. P.B., 7 lbs. @ 1/7 lb.
Ferri Phosph. Co., 7 lbs. @ 1/7 lb.
Ferri Phosph. Co., B.P.C., 7 lbs. @ 1/1 lb.
Fruiti Virg., B.P., 5 lbs. @ 10d. lb.
Rhamni, 7 lbs. @ 1/1 lb.
Rhei, P.B., 7 lbs. @ 11d. lb.
Selle, P.B., 7 lbs. @ 7d. lb.
Senna, P.B., 7 lbs. @ 1/- lb.
Tolut, P.B., 7 lbs. @ 10d. lb.

TABLETS COMPRESSED.

Band's (Sugar-Coated), gr. 5 3/10
Nitroglycerin, P.B., gr. 1-50th 4/6
Perchloride of Mercury (Coloured) 11/6
One Tablet in 1 pint of Water is
equivalent to 1/1000.
Thyroid Glan. 9/5

We endeavor to adhere to prices quoted, but as same fluctuate from day to day, they must be considered as subject to change without notice.

"TINCTURES.

1-2 in 6lb. Bottles.

B.P. Aquos.	B.P. Aquos.
Belladonna ... 4/1 3/10	Hyocyan ... 4/5 1/10
Benjoin ... 4/1	Nucis Vom. ... 5/8 1/4
Camph. Co. ... 3/1 1/2	Opil ... 4/4 4/2
Card. Co. ... 3/8 1/4	Quin. Arom. ... 3/10
Gentian Co. ... 3/4 1/4	Rhei Co. ... 2/5 1/4
Ung. Acid Boric Flav. ... 25 lb. pall @ 6d. lb.	
Hydarg. P.B., 1 lb. @ 21/1 lb.; 1 lb. @ 3/3	
" Ammon. P.B., 7 lbs. @ 1/9 lb.	
" Icthamon B.P.C., 7 lbs. @ 1/1 lb.	
" Ment. O., P.B., 7 lbs. @ 1/1 lb.	
Vin. Ipecac. P.B., 5 lbs. @ 2/9 lb.	

*Minimum quantity at these prices: Home Trade 3, Export 12 Winchester Quarts assorted.

In the treatment of Summer Complaints of Infants and Children

"The clinical basis of treatment is antiseptics and disinfection of the intestinal tract; not with a purpose to completely destroy the offending bacteria and their toxins, which we know to be neither possible nor necessary, but to assist the normal defences of the body to gain the ascendancy."

"There are four principles of therapy which govern the treatment of these infections:—

- "(a) to give the gastro-intestinal tract physiological rest."
- "(b) To remove as much as possible of the infective elements."
- "(c) To stimulate natural defences."
- "(d) To reinforce these natural defences with local antiseptics."

"By local antiseptics we can inhibit many of the pathogenic bacteria in the bowel before they enter the mucosa. The antiseptic agent must be selected with a view to certain requirements; for example, it must not be strongly acid. It must not coagulate mucin. It must not be astringent. It must be easily soluble and not upset osmotic conditions, and finally it must be non-irritant and non-toxic."

"Listerine answers to all these requirements and furnishes an ideal agent of local antiseptics in these cases. It has the additional advantage of being compatible with almost any other medicinal agent with which the physicians may desire to administer it."

The above is abstracted from a pamphlet entitled

'Acute Intestinal Infections of Children'

a copy of which we shall be pleased to send to physicians upon request.

Lambert Pharmacal Company,
2101 Locust St., St. Louis, Mo. U.S.A.

British Agents: S. MAW, SON & SONS, 7, Aldersgate Street, London, E.C.

FOR TRENCH SORES AND SORE FEET

There is no speedier or more effective remedy than Sphagnol. Sphagnol is a distillate of Tar from Peat, and because of its remarkable antiseptic and healing properties, it has for long been used and recommended by leading men in the medical profession as a standard remedy for skin diseases of all kinds and inflammation.

Sphagnol

FREE OUTFIT

of Sphagnol Preparations, consisting of Ointments, Soaps, and Suppositories will be sent to every Doctor or R.A.M.C. Officer upon request. This offer is made so that the curative powers of Sphagnol in the treatment of skin disease and wounds may be tested under personal observation.

An R.A.M.C. Lieutenant writes:—"Men in the trenches develop an eczematous condition of the face which they call "trench sores." I found the condition difficult to treat until I tried Sphagnol. Now I can almost guarantee a quick cure if the patient will use it for a couple of days."
A Private in the Worcester's writes:—"The Ointment was truly a godsend, for it has acted like a charm upon my feet which have been so sore and blistered. I never knew Ointment to give such relief."

PEAT PRODUCTS (SPHAGNOL) LTD.

18, Queenhithe, Upper Thames Street,
London, E.C.

Battley's Solution of Opium.

Liquor Opii Sedativus (BATTLEY)

THE OLDEST and still THE BEST
Hypnotic and Sedative.



Advantages:

- ¶ May be given with the greatest safety, being pure and free from harmful matter.
- ¶ No disagreeable after-effects follow its use.
- ¶ Never varies in strength.

The Medical Annual writes:

"Battley's Solution of Opium is a common word in the Practitioner's vocabulary. It has gained its reputation by its intrinsic value as a remedy which contains all that is sedative and anodyne in opium without its resinous constituents, which are, therapeutically speaking, impurities."

Strength—Twice that of Tinctura Opii B.P. Usual Dose—5 to 15 minims.

Issued in 2 oz., 4 oz., 8 oz. and 1 lb. bottles.

NOTE.—We do not guarantee our preparations unless in original bottles with the autograph of Richard Battley over each cork and on the label, without which none is genuine.

Sole Manufacturers:—

BATTLEY & WATTS, 18 Wellclose Square, London, E.

Telegraphic Address: "Sedative, London."

Telephone: Central 2183.

Prescribed by the Medical Profession for 35 years.

The MEDICAL PRESS & CIRCULAR (London, Eng.) says: "Few modern improvements in pharmacy have done so much as Benger's Preparations to assist the physician in his treatment of the sick."

For feeding difficult cases—Benger's Food.

Patients, with digestions debilitated from pain, accident, illness, or excess,—*slow to respond to treatment*, frequently benefit from a course of Benger's Food.

When Benger's is prepared, fresh new milk is used. The dormant digestive elements with which the food is combined, then become active, and reduce the tough casein curd of the milk, as well as the food itself, to an easily assimilated condition. This self-digestion can be regulated as desired. Benger's should not be confused with pre-digested foods, from which it is quite distinct.

BENGER'S FOOD

promotes a high state of bodily nutrition with little or much digestive effort, as may be prescribed by the physician.

A physician's sample, with all particulars, will be sent post free upon application to any member of the Medical Profession.



for INFANTS, INVALIDS,
AND AGED PERSONS,

is quite distinct from every other food obtainable, and is sold throughout the World by Chemists, &c., in sealed tins; price 1/-, 1/6, 2/6, 5/- and 10/-.

BENGER'S FOOD Ltd., ————— Otter Works, MANCHESTER, Eng.

Branch Offices

NEW YORK (U.S.A.) 92, WILLIAM STREET. ————— SYDNEY (N.S.W.) 117, PITT STREET.
Canadian Agents — National Drug & Chemical Co., Ltd., 34, St. Gabriel Street, MONTREAL and
depôts throughout Canada.

N.B.—BENGER'S FOOD is the direct outcome of the pioneer work on digestive ferments, by the late Sir William Roberts, M.D., F.R.S., and the late Mr. F. Baden Benger, F.I.C., F.C.S., in 1880, since when it has been the premier dietetic preparation of its kind in the British Empire.

Emol-Keleet

The Natural Sedative Emollient Dusting Powder.

After vaccination, dusting the vesicles with Emol-Keleet will be found to have a mildly astringent action and to considerably alleviate the local irritation. Owing to its purely inorganic composition and its extremely fine, impalpable texture, it may be recommended with advantage for regular application.

Emol Keleet has a very beneficial effect in all cases of inflamed and irritated conditions of the skin. It is especially indicated in the treatment of epidermic irritation accompanying scarlet fever and measles and its absorbent and sedative actions make it particularly beneficial in purulent eczema and inflammatory papulæ.

Samples free to the Medical Profession on request.

FASSETT & JOHNSON, Ltd.,
86, Clerkenwell Road, London, E.C.

Valentine's Meat-Juice

In **Dyspepsia, Catarrh of the Stomach or Intestines, or Gastric Irritability** from any cause, when the **Digestive Organs** reject milk and other foods, **Valentine's Meat-Juice** will be **Retained** and **Demonstrate** its Power to **Restore and Strengthen**

"For a Tired Stomach."

It is in constant use in Hospital and Private Practice and endorsed by eminent medical men.

Physicians are invited to send for Clinical Reports.

For sale by European and American Chemists and Druggists.

VALENTINE'S MEAT-JUICE COMPANY,
Richmond, Virginia, U. S. A.



Vitamogen^{Regd.}

(Syn.) Vitamines

Extract only:—

"There are so many proprietary foods on the market nowadays that it might seem at first sight superfluous to add to the number. **Vitamogen**, however, contains something fresh and original, inasmuch as it is the first attempt to make practical use of the epoch-making discoveries of Funk and others, which have recently revolutionized the ideas of physiologists on the subject of a perfect dietary.

These physiologists recently found that in addition to proteids, carbohydrates, fats, salts and water, which were formerly considered sufficient, other bodies were necessary to ensure the proper growth and preservation of vitality. These new bodies exist in very small quantities in fresh milk and certain vegetables, are of the nature of ferments or enzymes, and have been called **Vitamines**. They are readily destroyed by such processes as the sterilization of milk, and in the milling of flour by modern machinery, so that it is advisable in the case of growing children or in those whose tissues have been wasted and devitalized by illness to ensure a proper supply, and in **Vitamogen** we have them in a highly-concentrated form."

Complete Paper by Request.

The subjoined Voluntary Report has just reached us:—

VITAMOGEN.

June 2nd, 1916.

"Anxious to test indiscriminately the value of **Vitamogen**, I asked two Sisters in my Wards to each select children and superintend the administration of the food.

The cases selected included Marasmus, Gastritis, Gastro-enteritis, Rickets, and Broncho-pneumonia. The ages of the children varied from three to fourteen months. In one case only was there no apparent improvement.

One case, a Marasmus, gained weight in the first week, previously there had been no gain for a month; the others increased in weight from the second week onwards.

The principal difference, and a striking one, in the children, was the increased vitality shown in active muscular movements and a livelier interest in external objects.

There was absence of vomiting and flatulence, and a condition of apparent comfort and happiness.

In my experience **Vitamogen** is undoubtedly an advance in Scientific Feeding."

*Signed Report from the Medical Officer (M.D., M.R.C.S., L.R.C.P., &c.),
of one of the largest Children's Infirmaries in the London District.*

VITAMOGEN is the result of a long series of experiments conducted by our Chairman—a Fellow of the Chemical Society, and who invented VIROL—the well-known Infants' and Invalids' Food.

VITAMOGEN is packed in two sizes only, 2s. and 4s. 6d., and is obtainable from Chemists, Stores, &c.

"VITAMINES: Their Nature and Properties."

The above is the title of a brochure we have published, and copies will be sent to anyone interested in this subject, with sample of Vitamogen, by forwarding a postcard to the Manufacturers of Vitamogen,

Williams & Co.

24, HOLBORN, LONDON, E.C.

Telegrams: "KEEPWORTHY, LONDON." Telephone: 1215 HOLBORN.

SAVORY & MOORE'S PEPTONISED MILK PREPARATIONS

(Awarded **GOLD MEDAL** International Congress of Medicine, 1913)

Savory & Moore's Peptonised Milk Preparations include Cocoa and Milk, Coffee and Milk, condensed Peptonised Milk and Milk Chocolate. They are highly nourishing and extremely easy of digestion, and are thus especially useful in all cases where ordinary nourishment cannot be taken, whether through illness or digestive weakness. They are easily and quickly prepared, as hot water only is required.

COCOA AND MILK

The Cocoa and Milk is made from specially selected cocoa and pure, rich country milk, both of which are treated by a special peptonising process. The result is a preparation of remarkable nutritive value and delicious flavour which can be taken and assimilated even by those who are quite unable to take cocoa in the ordinary form.

The Cocoa and Milk is especially suitable for Invalids, Convalescents, and all whose digestive organs have been weakened by illness, overwork, study or other debilitating causes. In cases of GASTRITIS and GASTRIC ULCER it has proved highly successful. It is also very beneficial in NERVOUS CASES, and it may be taken at night without the least fear of causing digestive disturbance.

It requires only the addition of hot water, and can thus be prepared in a moment at any hour of the day or night.

PEPTONISED MILK

The process of making peptonised milk is one requiring much skill and experience, and it is practically impossible to prepare it properly in the sick room. In Messrs. Savory & Moore's factory the various operations are carried out by a highly skilled and specially trained staff, with the result that their Peptonised Milk may be absolutely relied upon.

The Peptonised Milk is of the greatest value as a food in all cases of INFANTILE MALNUTRITION, also in cases of FEVER and WASTING DISEASE, whether in children or adults. It is retained even when no other kind of food can be taken, and by its nutrient qualities enables the patient to successfully combat disease. In many cases it has been the means of saving life, especially among infants.

Dilution with hot or cold water, as directed, renders it ready for immediate use.

SAMPLES of the above may be obtained on application to:—

SAVORY & MOORE, Ltd., Chemists to THE KING,

143, New Bond Street, London.

YITTEL

GRANDE SOURCE

Vosges—France

NON-CHLORIDE NATURAL TASTELESS MINERAL WATER

*Highly recommended by the Leading Practitioners in France
for*

Inadequate performance of the depurating functions by the Kidneys, with all sequential troubles: in Arthritism, Uric Acid Diathesis, Gout, Glycosuria, Cholæmia, Hypertension in its developed or initial stages, Arterio-Sclerosis, Granular Kidneys, and Auto-Intoxications, occasional or habitual.

The water may alternatively be used as a table water, or for general dietetic purposes, or as a definite means of treatment. The precise technique of its employment at home naturally varies with each case. In some persons a course of the water is indicated once or twice each year—in spring and autumn—as much as a bottle, or even a bottle and a half, in doses of one large glass every twenty minutes, being taken every morning for twenty or twenty-five days. In others it is better to limit the course to ten or twelve days, and to administer only one or two glasses each morning before breakfast. When this is done, the treatment may be renewed more frequently—say, every two or three months, or even every month. Some, again, find it of advantage to take a large glass of the water either on rising in the morning or at bedtime, while others find it sufficient to use the water at meal-times, either by itself or mixed with wine. Finally, there are cases in which its use need only be occasional—when, for instance, there is some temporary illness or disorder.

All these points will of course be fully regulated by the patient's medical attendant if the best results are to be obtained.

Use of the water can, and should, be continued persistently, in view of its action both on the phenomena of nutrition and on diuresis, which maintains the permeability of the renal tissue and its activity.

HYGIENIC BOTTLING KEEPS INDEFINITELY

For full particulars apply— **E. DEL MAR, 12, Mark Lane, LONDON, E.C.**

Copy of Report issued by

THE INCORPORATED INSTITUTE OF HYGIENE.

PEPTOGENIC MILK POWDER

(Messrs. Fairchild Bros. & Foster, New York, and 64-65, Holborn Viaduct, London, E.C.)

The natural food of young infants is human milk, but when, for physiological reasons, the mother is unable to nurse her child, a food substitute must be found which supplies the essential constituents in easily assimilable form. Ass's milk is commonly thought most nearly to approximate to human milk, but comparison of numerous analyses shows that the milk of the ass is poorer than mother's milk in most of the essential ingredients, and especially so in fat, which is vital to the child. Modified cows' milk is, therefore, authoritatively conceded to be the most satisfactory substitute in infant feeding. The proportion of proteid in cows' milk is about twice that in human milk, but it has been estimated that the proteid constituent in the former is composed of 4 parts casein to 1 part albumin, while, in the latter, albumin and casein are present in about equal degrees. Albumin is considerably more easy of digestion than casein, and, moreover, the casein of cows' milk contains an indigestible residue which is not present in human casein. Other marked differences exist, but there is a tendency for casein in cows' milk to clot in the infant's stomach, under the action of the acids present, whereas human casein yields loose and friable flocculi—and this is the most important point to which attention has to be given.

It is probable that human milk is nearer to the digested state than is cows' milk, and the treatment of the latter by the addition of a pancreatic preparation brings it into closer relation to human milk. Complete peptonisation is undesirable, inasmuch as the child's stomach must be mildly exercised in order to prepare it for increasing digestive activities as a more solid diet is introduced.

Messrs. Fairchild Bros. & Foster's PEPTOGENIC MILK POWDER contains, in addition to the ferment necessary to effect partial peptonisation, certain salts similar to those present in human milk and sufficient milk-sugar to supply the deficiency of cows' milk in this respect. When used as directed, the Peptogenic Milk Powder shows a disintegrating action on casein which modifies cows' milk so as to approximate to the composition of human milk, and the resulting product does not coagulate in curds but in fine particles.

PEPTOGENIC MILK POWDER is quite free from any impure or harmful ingredient, and may with safety be used in conjunction with cows' milk, according to the directions given for all normal infants and when human milk is not available.

*Peptogenic Milk Powder is supplied in two sizes
at 1/10 and 3/8 each.*

Manufactured by
Fairchild Bros. & Foster,
NEW YORK
and 64/65, HOLBORN VIADUCT, LONDON, E.C.

Agents for Europe, Asia, Africa, & Australasia:
Burroughs Wellcome & Co.,
LONDON, SYDNEY, CAPE TOWN.

Biological Laboratories of the H. K. MULFORD COMPANY

The H. K. Mulford Company was the first American House to establish laboratories for the preparation of curative serums and bacterins (bacterial vaccines), and is to-day the largest producer of biological products. The staff of scientists and extensive connections with hospitals enable the H. K. Mulford Co.

To keep in close touch with the progress of bacteriologic science;

To obtain a constant supply of various strains of pathogenic bacteria so essential for the production of effective serums, bacterins, serobacterins and vaccines; and

To secure co-operation in the clinical testing of original products.



BIOLOGICAL LABORATORIES, GLENOLDEN, PA., U. S. A.

Every care is taken to insure the efficiency and safety of Mulford products, and physicians can prescribe the Mulford brand with full confidence that each product has been standardized and subjected to critical bacteriologic and physiologic tests.

Ethical and Scientific Basis.—The business is conducted on ethical and scientific lines. Physicians are always welcome to visit and inspect the Mulford Laboratories, and all improvements in the various products manufactured are published in full. Accurate information is furnished in Working Bulletins, which represent a condensation of current medical literature. No preparation is listed until its value is proved by clinical research.

The Mulford Label is the seal of accuracy of preparation, accuracy of standardization and accuracy of statement.

H. K. MULFORD COMPANY, MANUFACTURING AND BIOLOGICAL CHEMISTS

Philadelphia and Glenolden, U. S. A.

LONDON: 119 High Holborn, W. C.

Distributing Agents for Great Britain: **THOMAS CHRISTY & CO.,** Old Swan Lane, London, E. C.



**A POUND BOTTLE OF GLYCO-THYMOLINE
SENT FREE TO ANY PHYSICIAN WHO WILL MAIL
THIS PAGE ADVERTISEMENT TO OUR BRITISH
AGENTS, THOS. CHRISTY & CO., 4 OLD SWAN LANE, LONDON, E. C.**

==== ◆ ◆ ◆ ◆ =====
KRESS & OWEN COMPANY, 361-363 PEARL ST. NEW YORK

An Ideal Antiseptic

of wide applicability in the treatment of infected wounds and in surgical practice.

CHLORAMINE-T

p-toluene-sodium-sulphochloramide.

Introduced by Dr. H. D. Dakin and his colleagues of the Leeds University.

The use of the Hypochlorite antiseptics marks a new era in treatment. The new product—CHLORAMINE-T—is a great advance on the solutions containing Hypochlorous Acid which are now so widely used. It is practically non-toxic, does not coagulate blood serum, and is stable both in powder and solution. It may be employed not only for the treatment of wounds, but also as a mouth wash, nasal or vaginal douche, and for urethral irrigation.

Supplied in Powder in 1oz. bottles 1/2; 4oz. 3/6; 1lb. 12/6. Also in Tablets—8·75 grs.—bottles of 100, 4/6; Tablets—43·75 grs.—bottles of 12, 2/8; for making solutions of known strength. All post free.

Chloramine-T Gauze

containing approximately 35% Chloramine-T is also prepared. It is a non-toxic and non-irritating antiseptic gauze, and should be used dry, and subsequently moistened (if necessary) when in position.

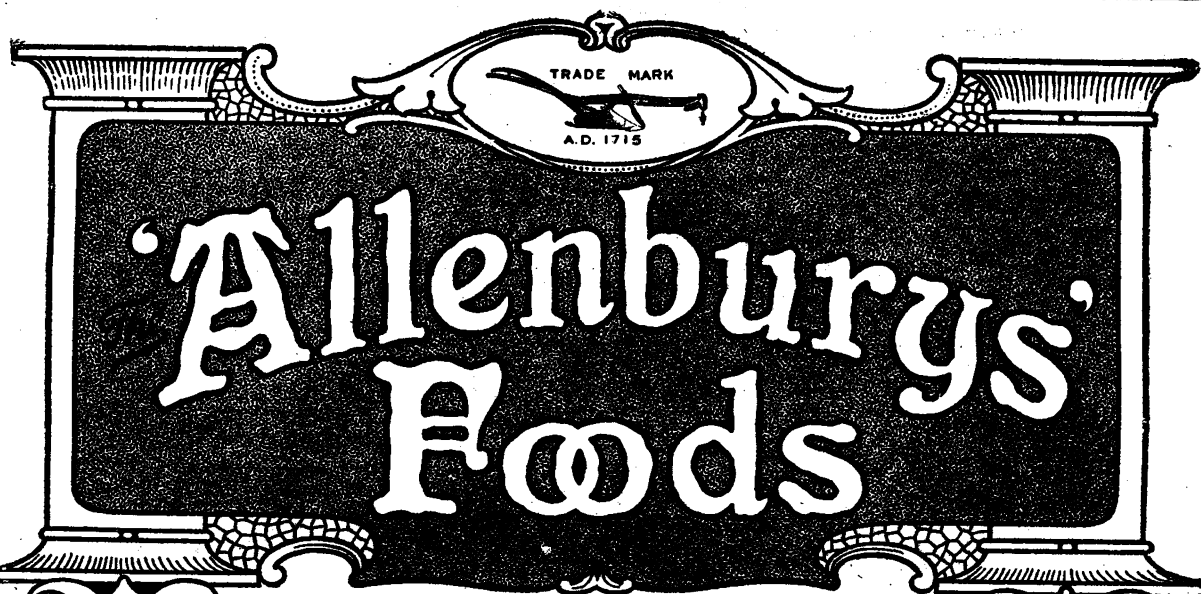
Supplied in Rolls, 1/- each, post free.

May be ordered from any of the 555 branches of Boots The Chemists or direct from Headquarters.

Manufactured in the Laboratories of

BOOTS PURE DRUG CO. LTD.

STATION STREET, NOTTINGHAM.



Special Advantages

- 1—The close conformity in composition of the Milk Foods to human milk; both fat and proteids being in similar relative proportions.
- 2—The readiness with which the Foods are assimilated; being as easy of digestion as maternal milk.
- 3—Their adaptability as an adjuvant to breast feeding during the period of weaning; no digestive troubles being likely to occur.
- 4—Their freedom from all harmful bacteria: being made from fresh milk, modified, evaporated at a low temperature, in vacuo, and preserved in hermetically sealed tins.
- 5—The ease and exactness with which the Foods can be prepared; the addition of hot water only being necessary.
- 6—Fresh elements of diet can be easily added to the Foods, and are specifically mentioned on each tin.

A reliable substitute is thus provided for the Mother's Milk, when this is wanting or deficient.

Milk Food No. 1 **Milk Food No. 2** **Malted Food No. 3**
 From birth to 3 months From 3 to 6 months. From 6 months upwards.

The "Allenburys" Rusks (Malted)

A valuable addition to baby's dietary when 10 months old and after.

A descriptive Pamphlet, giving Analyses, etc., and Samples of the Foods will be sent on request.

ALLEN & HANBURY'S LTD

37, LOMBARD STREET LONDON.

Agents: India, Rangoon, Calcutta, Madras, Bombay, Ceylon, Singapore, Hongkong, Shanghai, Peking, Tientsin, Hankow, Canton, Amoy, Swatow, Hongkong, Shanghai, Peking, Tientsin, Hankow, Canton, Amoy, Swatow.

COMBATS SERIES, 59—PHœNICIAN

'KEPLER' Malt Extract

(Trade Mark)

with Haemoglobin

DIGESTIVE, TONIC AND HÆMATINIC

Invaluable for pale, languid subjects and convalescents. Especially where the digestive powers are too feeble to permit of immediate treatment with inorganic iron preparations. It is an ideal adjuvant to milk diet. Each fluid ounce contains gr. $8\frac{3}{4}$ of pure Hæmoglobin.

Supplied in bottles at 2/2 each

'KEPLER' Malt Extract

(Trade Mark)

SAVES INFANT LIFE

Evidence Accumulates concerning the remarkable value of humanised milk as prepared with 'Kepler' Malt Extract. A physician reports attending a child whose condition was critical. Nothing would stay on the child's stomach and it was passing curdled motions. His diagnosis was acute indigestion with intestinal inflammation. He tried numerous remedies with no result, the child wasting away all the time. At the mother's last visit he suggested as a food humanised milk prepared with 'Kepler' Malt Extract, but did not expect to see the infant alive again. A month later the mother informed the physician that the child started to pick up at once and steadily improved, being then free from all symptoms and gaining weight.

DIRECTIONS FOR PATIENTS

Cards of directions for presentation to patients sent post free on receipt of a post card stating number required.

See also Wellcome's Medical Diary



BURROUGHS WELLCOME & CO.
LONDON

NEW YORK MONTREAL SYDNEY CAPE TOWN
MILAN SHANGHAI BUENOS AIRES BOMBAY
All communications intended for the Head Office should be addressed to

SNOW HILL BUILDINGS, LONDON, E.C.

London Exhibition Room: 54, Wigmore Street, W.



Central portion of a Phœnician patéra depicting a scene derived from Egyptian sources. The Pharaoh, wearing the atef crown, brandishes a club with his right hand, while in his left he holds a bow and several arrows, and at the same time clutches a group of kneeling enemies by the hair. Facing the King stands a figure of the Egyptian god Horus. The hieroglyphics are crude and meaningless imitations of Egyptian characters. Date, circa 700-500 B.C.

COPYRIGHT.

Phylacogen Therapy

Phylacogens are sterile aqueous solutions of metabolic substances generated by bacteria grown in artificial media, and from which the bacteria have been carefully removed by filtration.

RHEUMATISM PHYLACOGEN

Has proved remarkably effective in the treatment of various forms of rheumatism not due to specific infection, also of arthritis, sciatica, lumbago, chorea, neuritis, iritis, &c. Numerous cases of arthritis deformans have been benefited, many of which had resisted all other methods of treatment for 5, 10 and even 15 years.

GONORRHOEA PHYLACOGEN

Specially indicated in chronic gonococcal infections and their sequelæ, such as gonococcal arthritis and iritis, prostatitis, epididymitis, vesiculitis and cystitis in the male; and vaginitis, cervicitis, endometritis and salpingitis in the female. In cases of acute urethritis treatment requires to be supplemented by germicidal injections, such as argentide or protosil.

MIXED INFECTION PHYLACOGEN

The hypodermic administration of Mixed Infection Phylacogen is indicated in all infections, acute or chronic, mild or severe, in which no specific micro-organism is found to be predominant, notably in surgical infections, abscesses, puerperal sepsis, diseases of the skin—acne, eczema, impetigo, sycosis; diseases of the nose and ears—suppurating antrum, otitis media, rhinitis, catarrh, &c.

PNEUMONIA PHYLACOGEN

Indicated in the treatment of pneumonia or of any pathological condition caused by the pneumococcus.

Recent reports from English practitioners show that it is rarely necessary to give more than four injections of $\frac{1}{2}$ to 1 c.c. each before the temperature falls. Of 21 cases reported during the past three months there was only one death—a young man in whom the pneumonia was complicated with mitral disease.

ERYSIPELAS PHYLACOGEN

The hypodermic administration of Erysipelas Phylacogen is indicated in the treatment of erysipelas, the acute infectious disease caused by streptococcus erysipelatis.

Further particulars, with Clinical Reports, will be found in our booklet entitled "Phylacogen Therapy," which will be sent to any Medical Man on request.

The Phylacogens are supplied in 10 c.c. phials, each containing from 4 to 6 doses, and in cases of 5×1 c.c. ampoules.

PRICES.

Phials of 10 c.c., 11/8 each.

Cases of 5×1 c.c. ampoules, 7/- per case.

Subject to 10 per cent. discount to Medical Men.

PARKE, DAVIS & Co., 50-54, BEAK STREET, REGENT STREET, **LONDON, W.**

Telegraphic Address: "CASCARA, LONDON."

Telephone No.: REGENT 3260 (six lines).

THAT DIRTY PATCH!



DUNLOP: You've been routing round your tool-box for a patch! You've at last found a couple, but they're both so covered with grease and dirt that you don't know whether to use 'em or not!

Let me show you some **DUNLOP MOTOR SUREPATCHES**. They're packed in neat little dirt-and-grease-proof envelopes, so that every patch is kept perfectly clean and your Surepatch is ready to do its work under proper conditions.

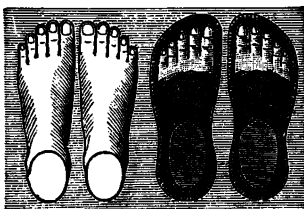
Ask your dealer—he either has them or can get them promptly!

DUNLOP

RUBBER CO., LIMITED,

Founders of the Pneumatic Tyre Industry,

Aston Cross, Birmingham. London: 14, Regent Street, S.W., 146, Clerkenwell Road, E.C., and Priory Works, Belsize Road, Kilburn, N.W.



DOWIE & MARSHALL, BOOTMAKERS (EASY),

455, WEST STRAND, CHARING CROSS, LONDON.

Registered at Stationer's Hall.]

(Established 1824.)

[“G.P.O. Telephone No. 9015 Central.”]

The instructions of the Profession intelligently carried out in the Departments for LADIES, GENTLEMEN, and CHILDREN, and especial attention is given to the Treatment of Weak Ankles and Flat Feet.

Illustrated Catalogue Gratis, in which is instruction for Self-measurement.

DOWIE & MARSHALL, 455, West Strand, Charing Cross, LONDON.

GUARANTEED PURE GRAPE GENUINE WINE BRANDY

Brandy for medicinal use must be not only of undoubted purity, but perfectly matured. In addition to fulfilling these two important requirements, **GAUTIER'S** ⁰⁰⁰ **BRANDY** is also of the highest quality, being distilled from wines of the choicest vineyards. Gautier Frères therefore recommend it to the Medical Profession with much confidence as a valuable stimulant.

GAUTIER'S ⁰⁰⁰ **LIQUEUR BRANDY**
CELEBRATED 20 YEARS OLD
“Three-
V ob-ve”

**GOLD MEDAL,
LONDON, 1910.**

GAUTIER'S BRANDY

is sold by almost all Wine and Spirit Merchants, Stores, &c., at

7/4 per bottle. 88/- per dozen.

GAUTIER FRÈRES, COGNAC. *Estd. 1755.*

Should any difficulty be experienced in obtaining this Brandy please apply for name of nearest dealer to the Wholesale Agents—

BROWN, GORE & CO., Tower House, 40, TRINITY SQUARE, LONDON, E.C.

AS SUPPLIED to H.R.H. The Princess Royal of England and H.R.H. The Crown Princess of Sweden.

HUMANIZED MILK

PREPARED ONLY BY

THE AYLESBURY DAIRY COMPANY, Limited,
31, ST. PETERSBURGH PLACE, BAYSWATER, W.

Telephone No. “PARK 226.”

SAMPLES FREE TO MEMBERS OF THE MEDICAL PROFESSION.

SUBITOL

The product of an Allied Country.

PERFECTLY REPLACES ICHTHYOL.

Medical Men should prescribe SUBITOL.

SAMPLE AND PAMPHLET FREE.

CHAS. ZIMMERMANN & CO. (Chemicals), Ltd., 9 & 10, St. Mary-at-Hill, LONDON, E.C.
BRITISH FIRM.

TEST ALL SO-CALLED

DIABETIC FOODS

WITH IODINE SOLUTION BEFORE RECOMMENDATION

GALLARD'S DIABETIC FOODS

STAND THIS AND ALL OTHER TESTS.

SAMPLES FREE.

CALLARD & CO., Food Specialists to all the great Hospitals.
74, REGENT STREET, LONDON, W.


STERILE CATGUT. JOHNSON & JOHNSON.

The only house that controls the whole process of Sterilization from the FRESH INTESTINES OF HEALTHY LAMBS to the final sealing under the most advanced aseptic methods. JOHNSON & JOHNSON, not relying on the CONTINENTAL MARKET for supplies, have ample stocks, and Ligature and Suture material prepared in their own laboratories must reach the surgeon in a sterile condition.


HANDBOOK OF LIGATURES and sample of STERILE CATGUT, free on application to

JOHN TIMPSON & CO., LTD.,
104, GOLDEN LANE, E.C.

Sole Agents for JOHNSON & JOHNSON.



RED CROSS
ASEPTIC CATGUT LIGATURES
No. 2, LENGTH, 28 INCHES.




IN DOUBLE ENVELOPE, GERM PROOF. These Ligatures after wrapping in inner envelopes have been made aseptic by successive sterilizations. DIRECTIONS.—(1) Remove the outer envelope. (2) Tear off end of first paper, then extract inner paper, touching only the end. (3) Under aseptic conditions cut off farther end of inner paper and draw out ligature.

Johnson & Johnson NEW BRUNSWICK, N. J., U.S.A.

PRUDENTIAL
ASSURANCE COMPANY, LIMITED,

HOLBORN BARS, LONDON.

INVESTED FUNDS - - - £94,000,000.
CLAIMS PAID - - - £126,000,000.



Delecta CHOCOLATES
Nougat Montelemar

Ask for "DELECTA" — the name describes them.

Boisseliers
BOY-SEL
Watford

CAFOLIN

is the only Pure Liquid Coffee, far superior to any other preparation, and in use in no way dearer than any other coffee.

In the sick room, in camp, on the march, and on board ship, **CAFOLIN** ought always to be at hand.

Samples, more than sufficient for two large or four small cups, free of charge, if ordered by letter with a penny stamp, for posting same, from

— THE —

CAFOLIN CO., Ltd.,
20, EASTCHEAP, LONDON, E.C.

Dr. CHAUMIER'S CALF LYMPH

GLYCERINATED AND REINFORCED
**THE CHEAPEST AND
MOST ACTIVE LYMPH.**

PREPARED UNDER THE

Most minute Antiseptic Precautions.

Supplied in Tubes, sufficient to vaccinate 1 or 2 persons at 5d. each; per dozen, by 12 tubes or more 4s. 6d. 10 persons at 8d. per tube; 25 persons at 1s. 3d. per tube. Collapsible tubes (40 vaccinations) 2s. 6d. each. Packing and postage 1d. in addition.

Agents for Great Britain:—

ROBERTS & CO.,
76, New Bond St., LONDON, W.

HOMMEL'S HÆMATOGEN

Contains purified Hæmoglobin 80%, Glycerin 20%, and a trace of aromatic flavouring.

Entirely Free from Antiseptics.

AN EFFICACIOUS REMEDY IN SEVERAL FORMS OF ANÆMIA, associated with constitutional diseases, and A POWERFUL RESTORATIVE when much blood has been lost by wounds sustained in action, by post-partum hæmorrhage, or in the course of surgical operations.

IMPROVES THE GENERAL NUTRITION IN TUBERCULOSIS.

PALATABLE, APPETISING, and free from any constipating tendency.

Please note that HOMMEL'S HÆMATOGEN is and always has been manufactured in SWITZERLAND BY SWISS PROPRIETORS, and that a continuous supply is assured. The price has not been increased.

In prescribing please always specify HOMMEL'S Hæmatogen.

Samples Free and Carriage Paid on application to—

HOMMEL'S HÆMATOGEN, 36/36a, St. Andrew's Hill, Doctors' Commons, LONDON, E.C.

SULPHAQUA

LARGELY AND SUCCESSFULLY PRESCRIBED IN

SKIN DISEASES, RHEUMATISM, GOUT, NEURASTHENIC CONDITIONS IN ARTHRITIC SUBJECTS, &c.

And as a valuable addition to the Inunction TREATMENT OF SYPHILIS with Mercury.

Employed in BATH and TOILET BASIN.

Possesses powerful Antiseptic, Antiparasitic, and Antalgic properties. Relieves intense Itching and Pain, is WITHOUT OBJECTIONABLE ODOUR, and does not blacken the bath enamel.

SULPHAQUA SOAP

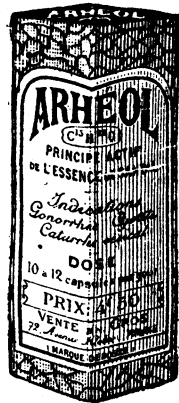
Recommended for the Skin and Hair. Especially useful in the treatment of Acne and Seborrhœa of the Scalp. Largely used in dermatological practice.

In Boxes of $\frac{1}{2}$ -doz. and 1-do. BATH CHARGES, 2 doz. TOILET CHARGES, and $\frac{1}{4}$ -doz. SOAP TABLETS.

Samples and Literature on request. Advertised only to the Profession.

THE S. P. CHARGES CO., Manufacturing Chemists, St. Helens, Lancs.

"SULPHAQUA" is stocked by the leading Wholesale Drug Houses in Canada, Australia, New Zealand, South Africa, India, &c.



ARHEOL

(C₁₅ H₂₆ O)

THE ACTIVE PRINCIPLE OF SANDALWOOD OIL.
Used with conspicuous success in
Gonorrhœa, Cystitis, Vesical Catarrh, etc.

Directions: 10 to 12 capsules daily.

ASTIER LABORATORIES:

45, Rue du Docteur Blanche, PARIS.

For Samples and Literature address:

WILCOX, JOZEAU & CO., 49, Haymarket, London, S.W.

Australasia—Messrs. Joubert & Joubert, 552, Flinders St., Melbourne.

Canada—Messrs. Rougier Frères, 63, rue Notre-Dame-Est, Montreal.

India—Messrs. Eugène Meiffre, P.O. Box 130, Bombay.

India—Messrs. Eugène Meiffre, 11, Ezra Street, Calcutta.

BRASS NAME PLATES,

For the Profession.

The Plates are manufactured in stout metal, deeply engraved, mounted on polished mahogany blocks, with fastenings ready for fixing, from 10s. 6d. each.

J. W. COOKE & CO.,
Brass Plate Engravers, Memorial
Brasses, &c.,

48, FINSBURY PAVEMENT, LONDON, E.C.

Telephone 573 London Wall.
SEND FOR NEW ILLUSTRATED CATALOGUE.

TAYLOR'S Bargains
IN ALL
MAKES OF TYPEWRITERS
BOUGHT, SOLD, EXCHANGED.

First Class Machines for £7 7 0.

HIRE REMINGTON 7
SMITH PREMIER 4

10/- or **25/-**

Month. 3 Months.

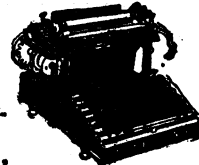
Deducted if bought 1st qtr.

CORONA FOLDING, £11 11/-

Weight 6 lbs.

TAYLOR'S Ltd.,

Dept. B.J., 74, Chancery Lane, London, W.C.

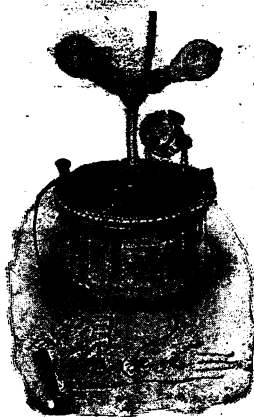


THE BRITISH EMPIRE UNION invites MEDICAL MEN

to join and exercise their influence with others to join the B.E.U. which has for its object the eradicating of the pernicious German influence in this country.
Apply, BRITISH EMPIRE UNION, 316, Strand, W.C.

"Tyco's" Sphygmomanometer

for the quick and accurate determination of both DIASTOLIC and SYSTOLIC readings of Arterial Blood Pressure. From all reputable dealers. Instrument on approval on receipt of card.—Particulars free from SHORT & MASON, LTD., Macdonald Road, Walthamstow, N.E.



THE "GALVANOSET" No. 1.

The Latest Development in MEDICAL ELECTRICITY.

SEND FOR DESCRIPTIVE PAMPHLET.

For any Continuous Current supply of any voltage ... Price **£8 8 0**

For any Continuous or Alternating Current supply of any voltage ... **£9 9 0**

Extra for Faradisation Attachment, **£1 15 0**.

For TRUE GALVANISATION, TRUE FARADISATION, IONISATION, ELECTROLYSIS, MUSCLE REACTION TESTING, &c.

The "GALVANOSET" is a device for safely utilising the main supply of electricity for medical purposes.

The following advantages render the "GALVANOSET" superior to all other methods:—

Nothing to get out of order.

Nothing to wear out.

Any desired current.

No expense for upkeep.

Costs less than 1 farthing per hour to run.

Light and portable.

Always ready for use.

Safe under all circumstances.

Provides a true galvanic current.

Does not require re-charging.

Finest range of adjustment.

Weights 7 lbs. only.

For the treatment of Gonorrhoea (Russ' Ionic Method) Rodent Ulcer Pustular Eczema
Ringworm Lupus Sycosis Superficial Anaesthesia Warts Sciatica Neuralgia
Rheumatism Absorption of Fibrous Tissue Treatment of Septic Wounds, &c., &c.

THE MEDICAL SUPPLY ASSOCIATION, Manufacturers,
167-185, GRAY'S INN ROAD, LONDON, W.C.

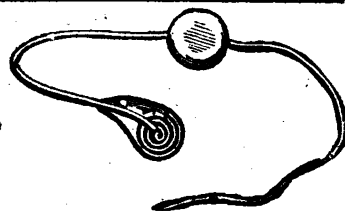
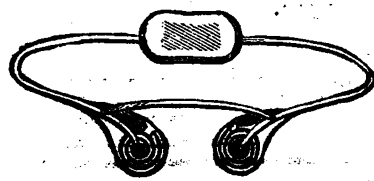
The latest Improvement in Trusses.

WM. COLES & CO.,
TRUSS SPECIALISTS. INVENTORS OF
THE SPIRAL SPRING TRUSS.

5, SACKVILLE STREET, PICCADILLY, W.

(Removed from 225, PICCADILLY.) Particulars by Post.

TELEPHONE—2646 Mayfair.



CATALOGUE OF SECONDHAND SURGICAL INSTRUMENTS

OSTEOLOGY, MICROSCOPES, POST FREE.

Students' Half Sets of Osteology, £2 10s., £3 5s. Articulated Skeletons,
£7 10s. and £10s. 10s. Articulated Skeletons lent on hire. Secondhand
Surgical Instruments, Osteology, and Microscopes bought for cash.

MILLIKIN & LAWLEY, 165, STRAND, LONDON.

Telephone—"City" 1706.



Prescribe the
**GENUINE PATENT BALL
AND SOCKET**

"Salmon Ody"
TRUSSES

for real comfort & efficiency.

ALMON ODY, Ltd., 7, New Oxford St., London.

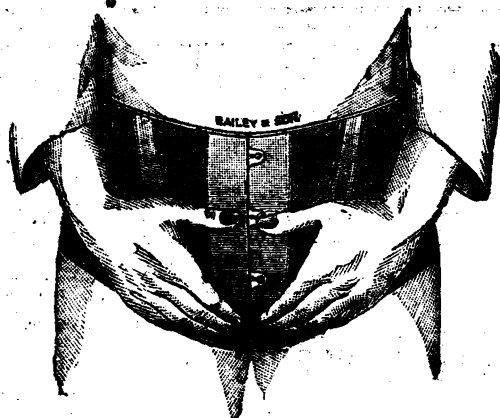
They have NO Agents.

Estab. 1806.

Phone: Regent 3305.

BAILEYS BURLINGTON BELT

GIVES THE SUPPORT YOU WANT.



Hand Woven Drab Cotton Elastic	...	15/-
" " White " "	...	18/-
" " Silk " "	...	25/-

Telegrams "BAYLEAF, LONDON.

Telephone GERRARD 2942.

PRIVATE FITTING ROOMS ON THE PREMISES.

IMPORTANT NOTICE.

Messrs. W. H. BAILEY & SON are prepared to send (immediately on receipt of letter or telegram) thoroughly Competent Assistants, Male or Female, to attend patients at their homes and to take Doctor's instructions. They personally superintend the making and fitting of the Appliance throughout, thus ensuring the best possible results.

W. H. BAILEY & SON

38 OXFORD STREET &
2 RATHBONE PLACE

London.

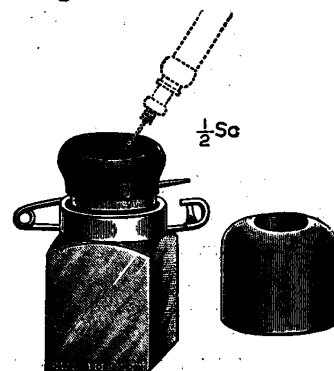
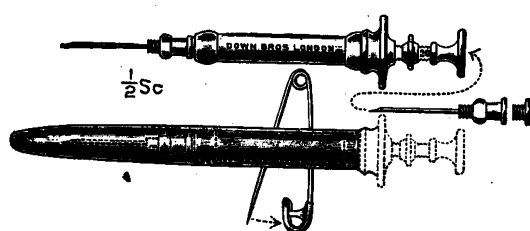
DOWN BROS.' SPECIALITIES.

A New Hypodermic Syringe

(Designed by Deputy Surgeon-General WILDEY, R.N.)

FOR GIVING RAPID HYPODERMIC INJECTIONS IN "ACTION."

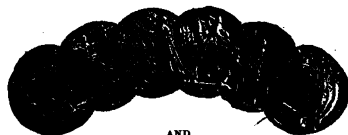
As supplied to His Majesty's Navy.



The Syringe is fitted in a sheath which protects it from dust and dirt, and is used in conjunction with a Solution bottle with rubber cap. The syringe can be rapidly charged by passing the needle through the rubber cap. The syringe sheath and bottle are both fitted with safety-pin attachment for fastening to the coat.

Prices:—Syringe, with Sheath, 8/3. Bottle, with Cap, 3/3.

GRANDS PRIX
PARIS 1900; BRUSSELS 1910; BUENOS AYRES 1910.



AND
GOLD MEDAL, ALLAHABAD 1910.

Manufactured by
DOWN BROS., Ltd., — **SURGICAL INSTRUMENT MANUFACTURERS —**
21 & 23, St. Thomas's Street, London, S.E.
(Opposite GUY'S HOSPITAL.)

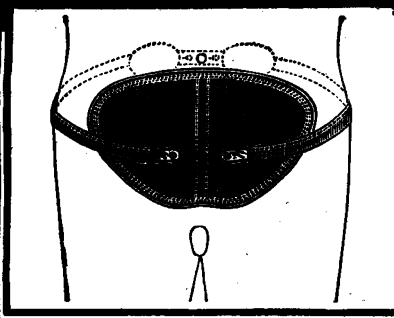
Telegraphic Address: "DOWN, LONDON."

Telephone: HOP 4400 (4 lines).

Factory: KING'S HEAD YARD, LONDON, S.E.

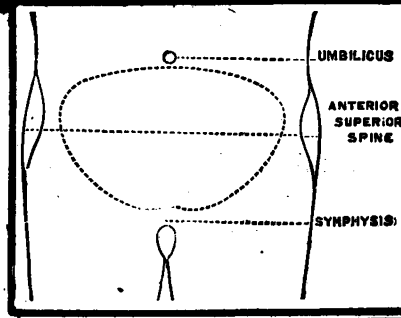
THE CURTIS ABDOMINAL SUPPORT

PATENTED
21103/10



TO THE SURGEON.

In cases of Abdominal Section and for Abdominal Wounds this is the ideal support.



It accelerates consolidation of scar tissues and expedites convalescence.
The only scientific Abdominal support which accomplishes its purpose effectively and with the least discomfort to the patient.

Members of the Profession are invited to write for particulars to—

WALTON & CURTIS, Ltd. (Patentees), Orthopædic Specialists,
8, OLD CAVENDISH STREET, LONDON, W., and WEST HAMPSTEAD.

Telephone—Mayfair, 6816.

Alcohol and Drug Inebriety and Neurasthenia.

INVERNITH SANATORIUM, COLINSBURGH, FIFE, SCOTLAND FOR GENTLEMEN ONLY.

(Under the direction of an Advisory Council of eminent Medical men.)

Neurasthenia is treated on approved principles, and there are Open-air Shelters in the grounds for suitable cases.

Inebriety and Narcomania are treated on definite medical lines, and the most approved scientific means are employed in the curative treatment. The Resident Medical Superintendent has each patient under his personal care and observation. The curative treatment is much aided by the healthy situation of the Sanatorium.

The Sanatorium, which stands in 200 acres of private grounds, is 500 feet above the sea, faces south, and looks out over the Firth of Forth. The climate is dry and bracing. All outdoor and indoor sports. First-class private golf course. Excellent mixed shooting over 1,200 acres, fishing, tennis, gardening, carpentry, &c. Billiard room (two tables), music room, large private library.

For all particulars of Invernith Sanatorium, Ltd., apply to the Resident Medical Superintendent, W. H. BRYCE, M.B., C.M. Telegrams: "Salubrious, Upper Largo." Telephone No. 8 Upper Largo. STATION—KILCONQUHAR (N.B. RAILWAY).

GHYLLWOODS SANATORIUM Est. 1905.

Licensed under Inebriates Acts.

NEAR COCKERMOUTH, CUMBERLAND.

Patients (gentlemen only) admitted for treatment of **Alcoholism, Drug Addictions, and Psycho-neurotic Ailments** generally. Patients are treated individually by most approved and suitable methods. 30 acres private grounds. Own golf links, trout-fishing, billiards, library, &c. Ref. to leading consultants in London and Provinces. Terms from 3 gns. Apply for further particulars to J. W. ASTLEY COOPER, Med. Supt. and Licensee. Telegrams: "Cooper, Buttermere."

NEWMAINS RETREAT, NEWMAINS, LANARKSHIRE.

Licensed under the Inebriates Acts.

The House is devoted to the care of LADIES of the upper classes only, who can be treated either under the Acts or as Voluntary Patients. The place stands high and the estate is extensive, with bracing air and in good shelter. It is very retired and beautiful, well situated for the treatment of Inebriety, Narcomania and other perversions, Neurasthenia, Hysteria, and Minor Mental Ailments.

No patient under Certificate of Insanity can be received.

References:—Dr. G. M. ROBERTSON, Dr. YELLOWLEES, Dr. RISTEN RUSSELL, Dr. OSWALD, and others.

Terms and particulars on application to "Superintendent, The Retreat, Newmains, Lanarkshire." Nearest Station: Hartwood, Cal. Rly.

ABBOTSWOOD HOUSE, CINDERFORD, GLOS.

The Temple Memorial Home, of the Church of England Temperance Society, for the Treatment of Inebriety (Males only)

Terms from £2 2s. weekly. A few vacancies at 10s. weekly. For admission forms and full particulars apply to Chaplain-Sup., Rev. S. SCOBELL LESSEY, M.D., Abbotswood House, Cinderford, Glos., or Secretary, C.E.T.S., 50, Marsham Street, Westminster, London, S.W. Tel.: 33X CINDERFORD.

INEBRIETY. DALRYMPLE HOUSE, RICKMANSWORTH, HERTS.

For the treatment of gentlemen under the Act and privately. Established 1883 by an association of prominent medical men and others for the study and treatment of Inebriety; profits, if any, are expended on the Institution. Large secluded grounds on the bank of the River Colne. All kinds of outdoor and indoor recreations and pursuits. Terms from £3 10s. per week.

For further particulars, apply to F. S. D. HOGG, M.R.C.S., &c., Resident Medical Superintendent. Telephone: 16 Rickmansworth.

TREATMENT OF INEBRIETY, AND THE MORPHIA HABIT, ETC. CAPEL LODGE RETREAT & SANATORIUM, Near FOLKESTONE. (Licensed under the Inebriates' Acts.)

Situated on the SUNNY CLIFFS OVERLOOKING THE SEA and the only Retreat on the South Coast. The latest scientific and Therapeutic methods for the Treatment and Cure of Alcoholic and Drug Inebriety are adopted. Bracing sea air, bathing, and Sea Fishing—14 acres of private grounds. Billiards, &c., &c. Terms from 3 guineas weekly. For full particulars apply E. NORRIS, M.D., Capel Lodge, near Folkestone.

THE COPPICE, NOTTINGHAM. HOSPITAL FOR MENTAL DISEASES.

President: The Right Hon. the EARL MANVERS.

This Institution is exclusively for the reception of a limited number of **Private Patients** of both sexes, of the **Upper and Middle Classes**, at moderate rates of payment. It is beautifully situated in its own grounds on an eminence a short distance from Nottingham, and from its singularly healthy position and comfortable arrangements, affords every facility for the relief and cure of those mentally afflicted.

For terms, &c., apply to the Medical Superintendent.

SHAFTESBURY HOUSE, FORMBY-BY-THE-SEA, LANCASHIRE.

For the CARE and TREATMENT of Ladies and Gentlemen MENTALLY AFFLICTED, with or without certificates. Dr. STANLEY GILL or Dr. HAYES GILL may be consulted at 31, Rodney Street, Liverpool, from 2 to 4 p.m. every Monday and Thursday. For terms apply STANLEY A. GILL, M.D., M.R.C.P., &c.

WOMEN INEBRIATES' HOME.

Albion House, Beverley, E. Yorks.

Exceedingly pleasant mansion, in its own private grounds; healthful situation; home life and comforts; most gratifying results; both alcohol and drug cases. Inclusive terms, 35s. per week.

Hon. Physician—GEO. SAYEGE, Esq., M.D., C.M. Applications, addressed to the Hon. Secretary Mrs. T. R. PENTITH, The Limes, Sutton, Hull.

INEBRIETY.

MELBOURNE HOUSE, LEICESTER. PRIVATE HOME FOR LADIES.

Med. Attendant: R. SEVASTRE, M.A., M.D. Cantab. Prin.: Hy. M. RILEY, Assoc. Soc. Study of Inebriety. 30 years' experience. Excellent Med. References.

For terms and Particulars apply Miss RILEY or PRINCIPAL. Telegrams: "MEDICAL, LEICESTER." Nat. Telephone: 769.

CHEADLE ROYAL A HOSPITAL FOR MENTAL DISEASES, CHEADLE, CHESHIRE,

and its seaside branch, CLAN-Y-DON, COLWYN BAY, NORTH WALES.

The object of the above is to provide the most efficient means for the cure of mental diseases in those who belong to the **upper and middle classes**. Voluntary boarders as well as certified patients are received for treatment.

For terms and further information apply to the Med. Supt., W. SCOWCROFT, M.R.C.S., &c., at Cheadle, or he may be seen at 72, Bridge St., Manchester, on Tuesdays from 12 to 3, and Fridays from 2 to 3. Tel.: 208 "Cheadle Hulme." 3594 "Manchester."

NORTHUMBERLAND HOUSE, GREEN LANES, FINSBURY PARK, N.

A PRIVATE HOME for the treatment of Ladies and Gentlemen suffering from Mental and Nervous Affections.

Highly situated, facing Finsbury Park. Voluntary Boarders received without certificates. For particulars apply to the Resident Physician.

Telephone No. 888 (North). Telegrams: "Subsidiary, London."

HAYDOCK LODGE, Newton-le-Willows, LANCASHIRE.**A PRIVATE MENTAL HOSPITAL FOR THE UPPER AND MIDDLE CLASSES ONLY EITHER VOLUNTARY OR UNDER CERTIFICATE.**

Patients treated and classified according to their social and mental condition. Terms from 31s. 6d. Private apartments on special terms. Established for 60 years. Under the same management 25 years. Recovery rate 50 per cent. Situated midway between MANCHESTER and LIVERPOOL. Two miles from Newton-le-Willows Station on the L. & N. W. Railway, connecting it with all parts.

Medical Staff. Resident Medical Proprietor—**CHARLES T. STREET, M.R.C.S., L.R.C.P.** **LIVERPOOL:** 47, Rodney Street. **MANCHESTER:** Winters' Buildings, St. Ann's St. Resident Medical Superintendent **J. C. WOOTTON, M.R.C.S. ENG., L.R.C.P. LOND.** Dr. STREET, Thursday: 2 till 4. Dr. P. G. MOULD; Dr. G. B. MOULD, Tuesday and Visiting (Sir) **JAMES BARR, LL.D., M.D., F.R.C.P.** 72, Rodney St., Liverpool. Telephone 2456 Royal. Thursday 12 to 1.30. Telephone 7611 Manchester. and **NATHAN RAW, M.D., M.R.C.P.** 66, Rodney St., Liverpool. Other days by appointment. Consulting **W. B. WARRINGTON, M.D., F.R.C.P.** 63, Rodney St., Liverpool. For further particulars and forms of admission apply Resident Proprietor, Haydock Lodge, Newton-le-Willows. Tele.: "STREET, Ashton-in-Makerfield." Tel.: 11 Ashton-in-Makerfield.

PECKHAM HOUSE,

(ESTABLISHED 1826),

112, PECKHAM ROAD, LONDON, S.E.

Telegrams: "Alleviated, London."

Telephone: New Cross 576.

An Institution licensed for the CARE and TREATMENT of THE MENTALLY AFFLICTED of Both Sexes. Conveniently situated. Electric trams and omnibuses from the Bridges and West End pass the House. Private Houses, with electric light, for suitable cases adjoining the Institution. Holiday Parties sent to the Seaside Branch at Worthing during the Summer months.

MODERATE TERMS.

Apply to MEDICAL SUPERINTENDENT for fuller particulars.

**NORTHWOODS HOUSE, WINTERBOURNE, near BRISTOL.****FOR PRIVATE TREATMENT OF MENTAL DISEASES.**

Situated in a large park in a healthy and picturesque locality, easily accessible by rail via Bristol, Winterbourne, Patchway, or Yate Stations. Uncertified Boarders received.—For further information see Medical Directory, page 2049. Terms moderate. Apply to Dr. J. D. THOMAS, Resident Physician and Licensee, for full particulars.

CAMBERWELL HOUSE, 33, PECKHAM ROAD, S.E.

Telegrams: "Psycholia, London."

Telephone: New Cross 1057.

For the Treatment of Mental Disorders.

Completely detached villas for mild cases. Voluntary Boarders received. 20 acres of grounds. Cricket, tennis, croquet, squash racquets, bowls, and all indoor amusements. Daily Services in Chapel. Rev. PHILIP S. O'BRIEN, D.D., Chaplain. Ordinary terms 2 Guineas a week. Senior Physician: FRANCIS H. EDWARDS, M.D., M.R.C.P. Full particulars from the SECRETARY.

HOYE VILLA, BRIGHTON.—A Convalescent Branch of the above.**FAIRFORD RETREAT,**Nat. Tel. No. 9. **GLOUCESTERSHIRE.** (ESTABLISHED 1822.)

A Licensed country HOME for the care and treatment of ladies and gentlemen mentally afflicted. Pleasantly situated with extensive grounds in the healthy Cotswold district. Every facility for outdoor exercise and amusement. **Voluntary Boarders are received without Certificates.** Terms moderate.

Railway Stations: Fairfield G.W.R. and Cirencester G.W.R. and Midland and S.W.

Full particulars from Dr. A. C. KING-TURNER, Proprietor.

BOREATTON PARK, BASCHURCH, SALOP.

A first-class Country Mansion especially adapted for the reception of a limited number of Ladies and Gentlemen mentally affected.

For particulars apply Dr. SANKEY.

SPRINGFIELD HOUSE, Near BEDFORD.

(Telephone No. 17.)

A PRIVATE HOME FOR MENTAL CASES,

Sunny situation, Dairy Farm, extensive grounds for Golf, Cricket, Football, Lawn Tennis, and Croquet; also an American Bowling Alley, Motoring, &c.

TERMS FROM 3 GUINEAS PER WEEK (including Separate Bedrooms for all Suitable Cases without extra charge).

For forms of admission, &c., apply to **DAVID BOWER, M.D.**, as above, or at 5, Duchess Street, Portland Place, W., on Tuesdays, from 4 to 5.

HEIGHAM HALL, NORWICH.

A Private Hospital for Cure of Ladies and Gentlemen suffering from Nervous and Mental Diseases. Boarders received. French Chef. 2 to 20 gns. weekly. See Adv. Med. Directory, p. 2052. Prop. and Resident Physician **J. G. GORDON MUNN, M.D., F.R.S.E.** Telephone 80 Norwich.

CLARENCE LODGE, CLARENCE ROAD, CLAPHAM PARK.

Stations: Clapham Road and Clapham Common.

LICENSED HOME FOR MENTAL & NERVOUS PATIENTS. Twelve Ladies only received for treatment under eminent Specialist, and given individual care and the comforts of their own homes. Suitable cases received as Voluntary Boarders.

The House is surrounded by well-wooded grounds, shady lawns for tennis, croquet, &c. Associated rooms, private rooms, or suites; moderate terms. Illustrated prospectus from Resident Licensee, Mrs. THWAITES. T.N.: 491, Brighton.

BARNWOOD HOUSE HOSPITAL FOR MENTAL DISEASES

Barnwood, near Gloucester. Telephone No. 307.

Exclusively for PRIVATE PATIENTS of the UPPER AND MIDDLE CLASSES.

This institution is devoted to the care and treatment of persons of both sexes at moderate rates of payment.

The terms vary according to the requirements of the patients who can have private rooms and special attendants, or be accommodated in detached villas and in the branch convalescent establishment on the hills.

Under special circumstances the rates of payment may be greatly reduced by the Committee.

For further information apply to **JAMES GREIG SOUTAR, M.B.**, the Medical Superintendent.

STRETTON HOUSE, Church-Stretton, Shropshire.

A Private HOME for the treatment of Gentlemen suffering from Mental diseases. Bracing hill country. See "Medical Directory," p. 1899.—Apply to Medical Superintendent. Phone 10 P.O. Church-Stretton.

ST. ANDREW'S HOSPITAL**FOR MENTAL DISEASES****NORTHAMPTON.****For the Upper and Middle Classes only.**

President—The Hon. THE EARL SPENCER, K.G.

This Registered Hospital is pleasantly situated in 118 acres of park and pleasure grounds.

Every facility is provided for cricket, football, hockey, croquet, lawn tennis, bowls, golf, motoring, boating and gardening.

Terms from 31/6 a week. Voluntary boarders not under certificates are received.

Patients paying higher rates can have Special Attendants, Horses and Carriages, and Private Rooms in Villas in the Hospital grounds, or at

MOULTON PARK,

a branch establishment, two miles from the Hospital, where there is a farm of 473 acres, which supplies the Hospital with meat, milk, and other farm produce.

BRYN-Y-NEUADD HALL, LLANFAIRFECHAN,

The Seaside House of St. Andrew's Hospital, is beautifully situated in a Park of 331 acres, close to the sea, and in the midst of the finest scenery in North Wales.

Patients can enjoy good cricket, lawn tennis, croquet, golf, trout fishing and bathing.

Patients or Boarders may visit this branch for long or short periods, and can have Private Rooms in Villas in the Park.

For particulars apply to the Medical Superintendent, St. Andrew's Hospital, Northampton.

TELEPHONE No. 56.

OVERDALE, WHITEFIELD, near Manchester.

Telephone—33 Whitefield.

A HOUSE for reception of Ladies suffering from mental and nervous ailments, certified and uncertified, situated in a healthy country district. Resident Physician—**PHILIP G. MOULD, M.R.C.S., L.R.C.P.**

—For terms apply to the Resident Physician.

Consulting rooms—30, St. Ann Street, Manchester.

ST. ANDREW'S HOSPITAL, DOLLIS HILL, LONDON, N.W.

A Hospital for PAYING PATIENTS of limited means Medical and Surgical, but not Mental or Contagious Cases. Resident and Visiting Medical Staff. Trained and Certificated Nurses.—Special terms to patients of French-speaking countries.—Apply, THE MATRON. Tel.: Willesden 893.

THE RETREAT PRIVATE ASYLUM, Near Armagh, Ireland. ESTAB. 1834.

Licensed under Government Inspectors' supervision for the reception of Ladies and Gentlemen of the Upper and Middle Classes suffering from **MENTAL AND NERVOUS DISEASES** (Voluntary Boarders and Inebriates admitted). For particulars apply to the Proprietor, Dr. J. GOWER ALLEN, J.P.
Telegraphic Address: "Loughgall, Armagh."

THE WARNEFORD, OXFORD, HOSPITAL FOR MENTAL DISORDERS.

President: The Right Hon. the EARL OF JERSEY.

This Registered Hospital, for the treatment and care, at moderate charges, of mental patients belonging to the educated classes, stands in a healthy and pleasant situation on Headington Hill, near Oxford. The gardens and grounds are extensive, the internal appointments are comfortable and refined, and the premises are lighted by electricity. The utmost degree of liberty, consistent with safety, is permitted, and amusements and occupation are amply provided. Parties are sent for change to the seaside during summer. Voluntary boarders are also received for treatment.—For further particulars apply to the Medical Superintendent.

MALLING PLACE, KENT.

BEAUTIFUL SEVENOAKS DISTRICT. Easy from town or Coast. Both sexes, mentally unsound, received under perfect condition of treatment. Tel. and Teleg.: Adam, 2, Malling; London, 26, Harley Street.

Grove House, All Stretton, Church Stretton, Shropshire.

A Private HOME for the care and Treatment of a limited number of ladies mentally afflicted. Climate healthy and bracing.
Proprietor, Dr. MCCLINTOCK.

WYE HOUSE, BUXTON.

For the care and treatment of Ladies and Gentlemen mentally afflicted. Voluntary Boarders received. Situated 1,200 ft. above sea level, facing S., sheltered from N. and E. 14 acres of ground. 10 minutes from Pavilion Gardens, Bath, and L.N.W. and Mid. Stations. Seaside Branch in Wales.—For terms apply to the Resident Medical Superintendent, GRÆVE DICKSON, L.R.C.P., &c. Nat. Tel. 130.

BROOKE HOUSE, CLAPTON, LONDON, N.

A HOME for the treatment of a limited number of Ladies and Gentlemen suffering from Nervous and Mental Diseases. Stands in extensive grounds, and is well adapted for the treatment of Nervous disorders according to modern methods.
Resident Physician—GERALD JOHNSTON.
Railway Station: Clapton. Telephone: 1648 Dalston.

In Beautiful Country. 18 miles from London. **LITTLETON HALL, BRENTWOOD, ESSEX.** (400 feet above sea-level). A HOME for a few LADIES Mentally Afflicted. Large grounds. Liverpool Street half-an-hour. Stations: Brentwood, 1 mile; Shenfield, 1 mile. Vacancy. For terms, &c., apply Dr. HAYNES. Telephone and Telegrams: "Haynes, Brentwood, 45."

THE GRANGE, NEAR ROTHERHAM.

A HOUSE licensed for the reception of a limited number of ladies of unsound mind. Both certified and voluntary patients received. This is a large country house with beautiful grounds and park, 5 miles from Sheffield. Station, Grange Lane, G.C. Railway, Sheffield. Telephone No. 34, Rotherham.
Resident Physician—GILBERT E. MOULD, L.R.C.P., M.R.C.S. Consulting Physician—CROCHLEY CLAPHAM, M.D., F.R.C.P.E.

BISHOPSTONE HOUSE, BEDFORD.

PRIVATE HOME for MENTALLY AFFLICTED LADIES. Ten only received. Terms from 4 gns. weekly. Apply, A. CHILLINGWORTH, Esq., L.R.C.P., M.R.C.S., or Mrs. PEELE. Telephone 708.

BOOTHAM PARK, YORK.

A Registered Mental Hospital for the treatment and care of Nervous and Mental Invalids of the upper and middle classes.
For particulars apply to Medical Superintendent, G. R. JEFFREY, M.D., F.R.C.P.E., F.R.S.E.

Telegraphic Address, "RELIEF, OLD CATTON." Telephone, 290 NORWICH Nervous and Mental Affections. LADIES ONLY RECEIVED. THE GROVE, OLD CATTON, Near NORWICH.

A High-class Home for the Curative Treatment of Nervous Affections. Situated a mile from the City of Norwich. Special and Separate accommodation is provided for those suffering from Hysteria, and for cases of Insipient Mental trouble who can be received as Voluntary Boarders without certificates, and occupy their own private suites of apartments. A staff of experienced nurses has been organised to take charge of patients in their own homes. For terms, &c., which are moderate and inclusive, apply to the Misses MCCLINTOCK, or to Cecil A. P. Osborne, F.R.C.S.E., Medical Superintendent.

MIDDLETON HALL, MIDDLETON ST. GEORGE,

Near DARLINGTON, Co. DURHAM.
Private house for the care and treatment of ladies and gentlemen suffering from mental diseases. This house, which is situated in a healthy and pleasant country, has been recently erected from plans approved by the Commissioners in Lunacy, and has been comfortably furnished throughout. Private rooms and special attendants are provided if required.
Terms to be had on application to L. HARRIS-LISTON, M.D., Medical Superintendent.

ST. LUKE'S HOSPITAL FOR MENTAL DISEASES OLD STREET, LONDON, E.C. [200 Beds.] (ESTABLISHED 1751.)

Telephone—5608 CENTRAL. "ENVOY, FINSQUARE, LONDON."
Admission gratuitous, or by contributions to maintenance, from 21s. per week.

TRAINED NURSES can be immediately obtained for Mental and Nervous Cases on application to the Matron.

CONVALESCENT HOMES—
NETHER COURT, RAMSGATE, standing in its own secluded grounds of 12 acres within a few minutes of the sea. Telephone—44 Ramsgate.
"WELDERS," near Gerrards Cross, Bucks, within 18 miles of London, situate in a park of 100 acres on high ground with beautiful garden and beech woods. Telephone—47 Gerrards Cross.
Voluntary Boarders received without certificates. Full particulars on application to the Secretary.

Glendossil and Hurst Houses.

—Considerable improvements have recently been made in both these Houses. They are in every way adapted for the care and treatment of the mentally afflicted of the upper and middle classes.—Apply, S. H. ADAM, Henley-in-Arden, Medical Superintendent.

THE MOAT HOUSE, Tamworth, Staffordshire.

A HOME FOR NERVOUS AND MENTAL CASES.
Stations: L. & N. West, and Mid. Railways.
The House stands in grounds of ten acres (within five minutes' drive of either station), and is devoted to the care and treatment of a few Ladies suffering from Nervous and Mental Affections, who enjoy the comfort, privacy, and occupations of home life. Voluntary patients received without certificates.—For terms, &c., apply to Resident Licenseses, EDWARD HOLLINS, M.A. Cantab., or (Mrs.) S. A. MICHAUX.

NERVES.

Physician, with special experience in the modern treatment of the functional nervous disorders, has vacancy (gentlemen only) in his private Sanatorium (military or naval officer at reduced fees). Large grounds, beautiful scenery, golf, croquet, bowls, billiards, trout fishing, &c. Terms according to requirements. Highest refs. to consultants and patients.—Address: No. 60, BRITISH MEDICAL JOURNAL Office, 429, Strand, W.C.

Medical man receives one good-class RESIDENT PATIENT (nervous, borderline, or mental). Having had experience in Institution work and with private patients, a certified or uncertified case received. Every comfort and the interests of home life. Well-appointed country house (billiard room), and farm land. Carriage, riding, motor, golf, &c.—Dr. DUFF, Collingtree Rise, Bexhill-on-Sea, Sussex. Phone: 11 Cooden.

Haslemere Nursing Home,
"Courtsfold," Haslemere, Surrey.—Rest Cure, Weir-Mitchell, General Nursing, Resident Masseuses. Stands in 3½ acres and on gravel soil. Modern sanitation. Permanent Patients also taken, or those needing rest and change. Superintendents: Misses RATTRAY & MOORE. Telephone, 22 Haslemere.

EPILEPSY.

THE DAVID LEWIS COLONY has accommodation for Epileptic Patients of good social position—for Gentlemen and Ladies in special houses at the Colony—for Boys at **COLTHURST HOUSE SCHOOL**. Terms for Ladies and Gentlemen from 30/- a week, Boys at the rate of 30/- a week. For further information apply to the Resident Medical Superintendent, David Lewis Colony, near Alderley Edge, Cheshire.

EPILEPSY.—TO MEDICAL ADVISERS.

A modern house at Maghull, Lancashire, has been specially erected and equipped for the treatment of gentlemen suffering from Epilepsy. Experienced Medical and Nursing treatment. Farming and Gardening. Billiards, lawn tennis, cricket, bowls, &c.—Apply, W. GRISWOOD & SON, Chartered Accountants, 2, Exchange Street East, Liverpool.

London Fever Hospital, Liverpool Road, Islington, N.

For the treatment of non-pauper patients suffering from infectious fever. Part of the cost is paid by the patient, the balance being found by the Hospital.

There are a few private rooms at 5½ guineas a week, payable weekly in advance. No aid is received from the rates. Subscribers domestic servants removed and treated free of charge. For admission, apply to the Secretary, W. CHRISTIE, Major.

Treatment of the Wounded.

THE EDGAR ALLEN INSTITUTE (INCORPORATED)

FOR MEDICO-MECHANICAL TREATMENT,
77, GELL STREET, GLOSSOP ROAD,
SHEFFIELD.
Established 1911.

Open daily from 9 a.m. to 1 p.m., and 2.30 to 5.30 p.m. Saturdays 9 a.m. to 1 p.m.

FOR THE AFTER-TREATMENT OF Fractures of Bones, Injuries to Joints, Muscles, Tendons, and Nerves through gunshot wounds and accidents, and Stiffness arising from all forms of Injury. Rheumatism in its various forms, Deformities, &c.

The System is after that originated by Dr. Zander, of Stockholm (Sweden). Provision is made for Supplementary Treatment by Massage carried out by trained Swedish masseurs.

Hot Air, Electrical, &c.
A Medical Director is in attendance daily. For Booklet and terms of treatment apply to the Secretary.

Resident Patients.—Descrip-

tive List (Illustrated) of Medical men in all parts willing to receive Resident Patients sent without charge. Or, selection will be made on statement of nature of case and terms to the General Manager, SCHOLASTIC, CLERICAL AND MEDICAL ASSOCIATION, Ltd., 22, Craven Street, Trafalgar Square, W.C.

BRUNTON HOUSE, LANCASTER,

A Private Home for Feeble-Minded Boys. There are now a few vacancies in this well-appointed private establishment. It is easily accessible from Lancaster, overlooks Morecambe Bay, and possesses extensive gardens and grounds, with tennis and croquet lawns. Varied scholastic and manual instruction. Individual attention is given to the pupils by experienced staff under a Resident Physician and Lady Matron. Terms, &c., on application to Dr. W. H. COUPLAND.

PAINSWICK SANATORIUM, COTSWOLD HILLS.

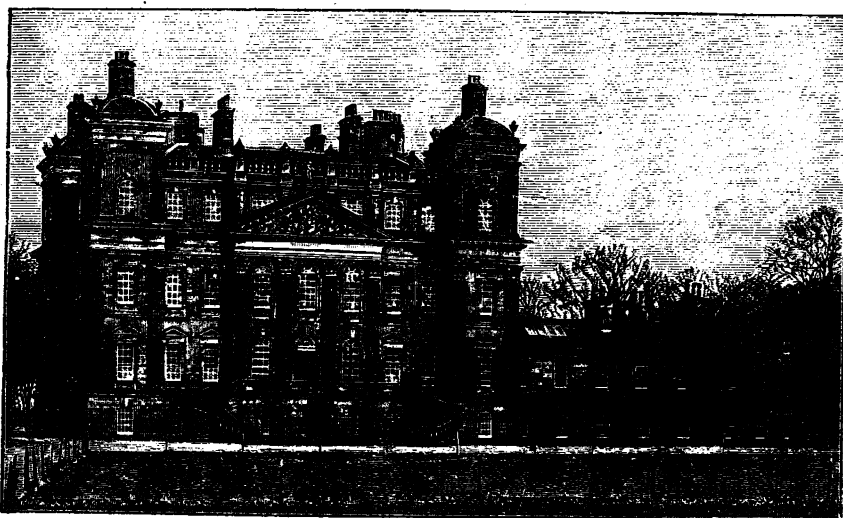
(See Last Week's Advertisement.)
INCLUSIVE TERMS 2½ GNS. WEEKLY.
Apply, Wm. McCall, M.D., Painswick, Glos.

GRAMPIAN SANATORIUM KINGUSSIE, INVERNESS-SHIRE.

Specially built for the Open-Air Treatment of Tuberculosis, and opened in 1901. Bracing mountain air. Elevation 860 feet above sea-level. Sheltered situation in pine wood. Graduated walks. Electric light throughout building and in shelters. Inoculation Treatment available for patients—18 beds.

Resident Physician.
Terms 4 guineas weekly. For further particulars, apply WALTER DE WATTEVILLE, M.D., Kingussie, N.B., Medical Director.

DUFF HOUSE, Banff, Scotland,



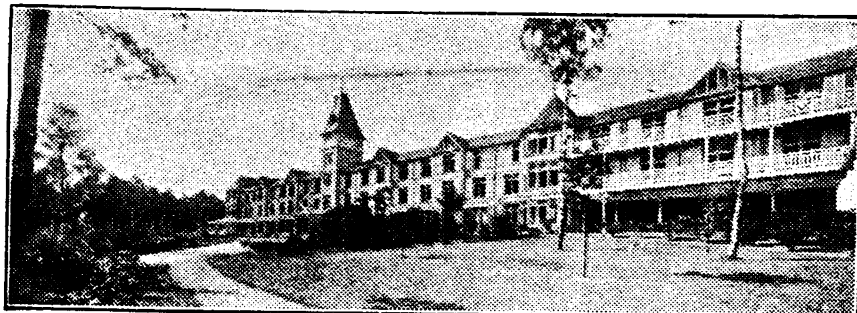
a former home of H.R.H. the Princess Royal and His Grace the late Duke of Fife, is now open to receive Patients suffering from

DISORDERS OF THE STOMACH AND INTESTINES, DIABETES, GOUT,

and other complaints which need skilled chemical investigation and dietetic treatment.

The House is fitted with Laboratories, X-ray Installation, Medical Baths and Lifts. The climate is mild, and the rainfall the lowest in Scotland.

The Staff includes Physicians who have had special experience of Chemical Pathology, Dietetics, and X-ray work, an Analytical Chemist, a Matron, and fully Trained Nurses.



NORDRACH-ON-DEE

(Near BALMORAL), SCOTLAND.

Open-Air Treatment of CONSUMPTION and allied diseases.

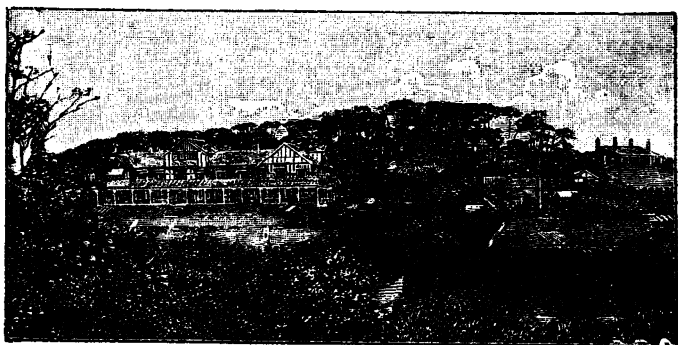
TUBERCULIN and VACCINE TREATMENT associated with Laboratory Control is available for all patients residing in this Sanatorium.

Research Laboratory, Fully Equipped Throat Room, Roentgen Ray and Ultra Violet Light Installations.

Address, Dr. LAWSON or Dr. LUCAS, Banchoory, N.B.

DARTMOOR SANATORIUM 750 FEET.

Treatment by Tuberculin-Vaccines and I.K. Within easy reach of the moor. Resident Physicians:—C. H. BERRY, M.R.C.S., L.R.C.P., For particulars apply C. H. BERRY, M.R.C.S., Sanatorium, Chagford, Devonshire. Telephone: 11 Chagford.



MUNDESLEY SANATORIUM.

Specially built for the Treatment of Pulmonary and other forms of Tuberculosis. Aspect S.S.W., on a carefully chosen site. Pure, bracing air. High sunshine record. One mile from the coast. Electric light throughout. Full Nursing Staff.

Resident Physicians { S. VERE PEARSON, M.D.(Camb.), M.R.C.P. (Lond.)
MAURICE F. SQUIRE, M.D.(Durh.).

For prospectus and full particulars apply the SECRETARY, J. W. S. PURVES, Sanatorium, Mundesley, Norfolk.

MENDIP HILLS SANATORIUM, FOR THE OPEN-AIR TREATMENT.

Specially built, facing South. 200 acres of Sanatorium grounds—meadow and woodland; sheltered pine avenues. Altitude 850 feet, magnificent view for miles South; hot-water radiators and electric light. Special features are breathing, singing, and graduated exercises, walking and tramping; continuous inhalation decided success; electric treatment. Individual attention. Resident Physician—C. MUTHU, M.D., M.R.C.S., L.R.C.P.

Terms from 3 Guineas Weekly.

For particulars, apply, SECRETARY, Hillgrove, Wells, Somerset.

THE HOME SANATORIUM, WEST SOUTHBOURNE, NEAR BOURNEMOUTH.

For early Tuberculosis. Efficient hygienic treatment combined with home comfort. Skilled nursing. Night nurse. Excellent table, Beautiful grounds. Croquet and Billiards.

Charges: Three to Five Guineas Weekly.

For Illustrated Prospectus and full particulars apply to J. E. ESSLEMONT, M.B., Ch.B., Resident Superintendent.

Telegrams: "SANABILIS, BOURNEMOUTH."

Telephone: 61, SOUTHBOURNE.

VALE OF CLWYD SANATORIUM.

This Sanatorium (opened 1901) is established for the treatment of Tuberculosis as carried out by Dr. OTTO WALTHER, of Nordrach. It is situated in the midst of a large area of park-land, at a height of 450 feet above sea-level, on the western slopes of mountains rising to over 1,800 feet, which protect it from north and east winds, and provide many miles of carefully graduated uphill walks, similar in character and extent to those at Nordrach.

Small rainfall. Porous subsoil. Large amount of sunshine. Electric lighting, and hot water radiators in each room. The Physician himself was a patient at Nordrach.

For particulars apply to GEORGE A. CRACE-CALVERT, M.B., &c., Llanbedr Hall, Ruthin, North Wales.

PENDYFFRYN HALL SANATORIUM

Physicians:—G. M. DOBSON, B.A., M.B., B.Ch.

FOR OPEN AIR AND INOCULATION TREATMENT OF ALL FORMS OF TUBERCULOSIS.

One of the first Sanatoria opened in the United Kingdom to carry out the Treatment as practised at Nordrach. Carefully graduated walks rise through pines, gorse and heather, to a height of over 1,000 feet above sea level, commanding extensive views of both sea and mountains, sheltered from E. and N.E. winds, Climate mild and bracing. Small rainfall. Large average of sunshine. There are over five miles of walks in the private grounds. Rooms heated by hot-water radiators and lit by electric light.—Apply, Secretary, Pendyffryn Hall, Penmaenmawr, North Wales. Telegrams: Pendyffryn; Telephone: No. 20 Penmaenmawr.

SMEDLEY'S HYDRO, MATLOCK. [Established 1853]

LARGEST AND MOST COMPLETE.

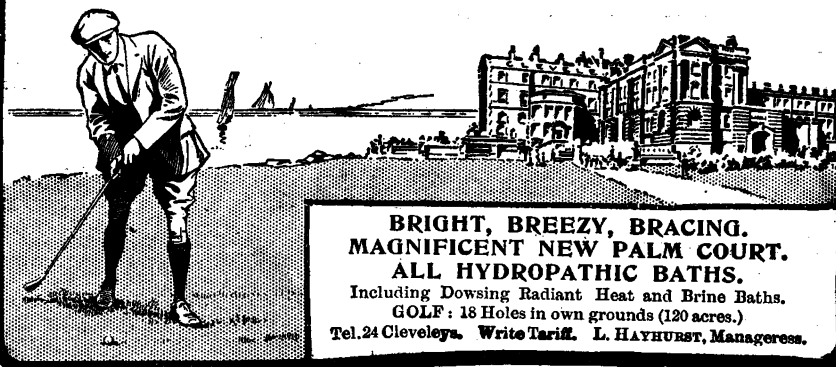
Resident Physicians: { G. C. R. HARBINSON, M.B., B.Ch., B.A.O. (R.U.I.)
R. MACLELLAND, M.D., C.M. (Edin.)

Unrivalled suites of Baths for Ladies and for Gentlemen, including Turkish and Russian Baths. Aix and Vichy Douches, Massage and Weir Mitchell treatment, an Electric Installation for Baths and Medical purposes, Dowsing Radiant Heat, D'Arsonval High Frequency, Roentgen X-Rays, Fango Mud, Nauheim Baths, etc. Special provision for Invalids. Milk from own farm. Large Winter Garden. Night attendance. Rooms well ventilated, and all bedrooms warmed in Winter. A large Staff (upwards of 60) of trained Male and Female Nurses, Masseurs, and Attendants.

Prospectus and full information on application to H. CHALLAND, Managing Director. Telegrams—"SMEDLEY'S, MATLOCK." Telephone—No. 17.

CLEVELEYS HYDRO

NEAR BLACKPOOL.



BRIGHT, BREEZY, BRACING.
MAGNIFICENT NEW PALM COURT.
ALL HYDROPATHIC BATHS.

Including Dowsing Radiant Heat and Brine Baths.
GOLF: 18 Holes in own grounds (120 acres.)

Tel. 24 Cleveleys. Write Tariff. L. HAYHURST, Manageress.

PEEBLES HYDRO. HOTEL.

Delightful situation. Charming Grounds. The most complete Installation of BATHS and ELECTRICAL TREATMENT in this country. Skilled Massage. Special Invalid Diet. Plombieres treatment and Fango Mud Packs. RADIUM EMANATIONS.

A COMPLETE SPA UNDER ONE ROOF. Trained Nurse. Resident Physician, THOMAS D. LUKE, M.D., F.R.C.S.

GOLF: 18 Hole Course.

Special Terms for Wounded Officers. Terms on application to the Manager.



CATERHAM SANATORIUM.

Battie Creek System. All Baths, Massage, and Electricity. Bergonic Chair and Diathermy. Telephone 88. T.A. "Hydro," Caterham. Resident Physician: A. B. OLSEN, M.D., D.P.H.

BOURNEMOUTH HYDRO.

With finest Sun-lounge and Marine Balcony on the South Coast.

Every kind of Bath.
Every kind of Massage.
Every kind of Electricity.
Every kind of Diet.
Carlsbad and Vichy Waters, &c.
High Frequency. Electric Lift.

Prospectus from Secretary. Resident Physician:—W. JOHNSON SMYTH, M.D.

DROITWICH NATURAL BRINE BATHS.

For Rheumatism, Arthritis, Sciatica, etc.

There is no substitute for the WORLD-RENOWNED BATHS, which can only be obtained at the SPA, and the RADIO-ACTIVITY, the RADIO-EMANATIVE and other properties are ONLY PRESENT IN THE NATURAL BRINE.

SPECIAL FACILITIES TO MEDICAL MEN. Lovely Country and Holiday District—Good Hotels, etc., Good Climate.

Analysis and Illustrated Booklet free from J. H. HOLLYER, Baths Director, 15, Corbett Estate Offices, Droitwich (Worcs.).

WOODHALL SPA, LINCOLNSHIRE.

The celebrated Bromo-Iodine MINERAL WATER for Arthritis, Rheumatism, Gout, Neuritis, Sciatica, and Nervous Diseases Liver Complaints; Skin, Nose, and Throat Affections; Uterine Inflammatory Diseases and Tumours.

To be had of all Chemists, or direct from the Spring.

Apply to the Secretary, WOODHALL SPA CO., LTD., Woodhall Spa, Lincolnshire.

THE SPA BATHS.

Fully equipped with Mineral Water, Aix and Vichy Douche, Nauheim, Berthollet Vapour, Radiant Heat and Light Baths, Fango Treatment, Throat Sprays, Cataphoresis, Schneec Baths, Bergonié Treatment for Obesity, and complete Electrical Treatments.

For full particulars apply to LIONEL CALTHROP, M.B., L.R.C.P., Medical Superintendent, "BROOKSIDE," WOODHALL SPA, LINCOLNSHIRE. Tel. No. 50.

THE VICTORIA HOTEL.

The Premier Hotel adjoins the Spa Baths. It comprises 160 Rooms. Numerous Suites. Every comfort for Invalids. Table d'Hôte (separate tables). Special Diets. Electric Light. Garage and Stabling. Orchestra. Tennis, Croquet, and Bowls. THE BATHS and Hotel stand in own grounds and Pine Woods of 60 acres. Excellent 18-hole Golf Course.

Telephone No. 25 WOODHALL SPA.

For terms apply THE MANAGER.

Queen Charlotte's Lying-in Hospital and Midwifery Training School, Marylebone, N.W.

Medical Pupils admitted to the Practice of this Hospital. Unusual opportunities are afforded of seeing obstetrical complications and operative midwifery, about one-half the total admissions being primiparous ones. Certificates awarded as required by the various Examining Bodies.

Pupils trained for Midwives and Monthly Nurses. On being found competent, each pupil is awarded a Certificate of efficiency. Special preparation for examination for Central Midwives' Board. Preliminary Training School now open. For rules, fees, &c., apply to **ARTHUR WATTS, Secretary.**

LEIGHTON . . . PARK SCHOOL, READING . . .

"Training for the
Business of Life."

Illustrated prospectus and full information from the Headmaster.

Guy's Hospital.

ENTRANCE SCHOLARSHIPS to be competed for in SEPTEMBER, 1916.

A.—Junior Scholarships in Arts and Science, open to candidates under 21 years of age:—

- A Scholarship in Arts of the value of £100.
- A Scholarship in Science of the value of £120.
- A Scholarship value £50 to be awarded in Arts or in Science according to the discretion of the Examiners and the percentage of marks obtained.

B.—Two Senior or University Scholarships—one of the value of £75 and one of the value of £35—open to candidates under 25 years of age, who have completed their study of Anatomy and Physiology.

Full particulars may be obtained on application to the DEAN, Guy's Hospital, London Bridge, S.E.

DIPLOMA IN PUBLIC HEALTH.

UNIVERSITY OF CAMBRIDGE.

LECTURES and PRACTICAL INSTRUCTION in the subjects of the Examination will begin 24th JUNE, and 11th OCTOBER, 1916, at the UNIVERSITY LABORATORIES, PEMBROKE STREET, CAMBRIDGE.

Hygiene, Chemistry, and Physics: Mr. J. E. PURVIS, M.A.—Special Lectures by Professor WOODHEAD on Methods of Purification of Water. *Bacteriology and Preventive Medicine:* Dr. GRAHAM SMITH.—Special Lectures by Professor NUTTALL, F.R.S., on Protozoal Diseases, and by Dr. SHIPLEY, F.R.S., on Animal Parasites.

Practical Sanitary Administration, Hospital Administration, School Hygiene, Sanitary Law, &c.: Dr. LAIRD, M.O.H. for Cambridge, and Dr. ROBINSON, M.O.H. for the Cambridgeshire County Council.

Further particulars may be obtained from Mr. J. E. PURVIS, Corpus Christi College, Cambridge.

ST. MARY'S HOSPITAL MEDICAL SCHOOL,

PADDINGTON, W.
(University of London).

The WINTER SESSION will begin on Oct. 2nd. Lectures and Classes in Preliminary, Intermediate, and Final subjects of the Curriculum will be resumed on this date. For illustrated prospectus apply to the Dean, Sir JOHN BROADBENT, Bart., M.D., or to the School Secretary.

SCHOOLS for BOYS and GIRLS, TUTORS for ARMY, and ALL EXAMS.

Messrs. J. & J. PATON, having an intimate, unique, and up-to-date knowledge of the BEST SCHOOLS and TUTORS in this country, will be pleased to AID PARENTS in their choice by sending (free of charge) prospectuses and TRUSTWORTHY INFORMATION regarding ESTABLISHMENTS which can be THOROUGHLY RECOMMENDED.

The age of the pupil, district preferred, and rough idea of fees should be given. Phone, write, or call. J. & J. PATON, Educational Agents, 143, Cannon Street, London, E.C. Telephone 5053 Central.

POST-GRADUATE STUDY. London School of Clinical MEDICINE.

At the DREADNOUGHT HOSPITAL, Greenwich, and its affiliated Hospitals.

Operative Surgery and Pathology as usual. Clinical Classes abandoned temporarily owing to the absence of many members of the Staff on War duties. C. C. CHOICE, Dean.

UNIVERSITY EXAMINATION POSTAL INSTITUTION.

17, RED LION SQUARE, LONDON, W.C.

18 Medical Tutors, including 9 Gold Medalists.

(Manager: Mr. E. S. WEYMOUTH, M.A. Lond.)

Telephone 6313 Central.

POSTAL OR ORAL PREPARATION FOR

ALL MEDICAL EXAMINATIONS.

SOME RECENT SUCCESSES.

N.B.—There are different modes of counting "successes." Figures given below do not include successes of private pupils of the Tutors. List of over 20 years' Successes sent on application. Names not inserted if privacy is desired.

M.D.(Lond.), 1901-15; (5 Gold Medalists during 1913-15) 217

M.S.(Lond.), 1902-15 (including 3 Gold Medalists) 15

M.B., B.S.(Lond.), Final 1906-15 (Besides 7 who tried part only) 69

Primary F.R.C.S.(Eng.), '06-16 44

Final F.R.C.S.(Eng.), 1906-15. Including 5, May, 1914, Exam. 28

M.R.C.P.(Lond.) during last two years 14

D.P.H., (Various) 1906-16 134

F.R.C.S.(Edin.), 1906-15. (3 entered 1914. All successful.) 11

M.R.C.S.L.R.C.P. Final 1906-16 (Besides 5 who tried part only) 84

M.D.(Durh.) (Practitioners) '06-15 20

M.D.(Various). By Thesis. Legitimate assistance. Moderate fee. Numerous successes. 5 successful Edin. M.D., July 1913, including 3 "commended."

R.A.M.C.(Ent.), Jan. '14. Top Candidate.

R.N.(Entrance), March '14. Top Candte.

I.M.S., July '15. Second place.

Also D.T.M. L.M.S.S.A., M.B.(Cantab., &c.) Triple Qualification, &c.

Medical Preliminary. Advice as to Exam. to select. Special coaching.

Medical Prospectus (38 pages), General Prospectus with names of Tutors, and special M.D. Pamphlet sent on application.

Royal College of Surgeons in IRELAND.

CARMICHAEL PRIZE ESSAY.

The late RICHARD CARMICHAEL, Esq., having bequeathed to the College a sum of money for the purpose of founding Prizes for Essays upon certain subjects specified by him, the President and Council hereby give notice that, on the first Thursday in November in the year 1917, they will proceed to adjudge Prizes of One Hundred and Fifty Pounds and One Hundred Pounds for the best Essays that may be presented to them in accordance with the following instructions prescribed by MR. CARMICHAEL:—

1st. "The state of the Medical Profession in its different departments of Physic, Surgery, and Pharmacy, in Great Britain and Ireland, at the time of the writing of these Prize Essays."

2nd. "The state of the Hospitals and Schools of Medicine, Surgery, and Pharmacy."

3rd. "The state and mode of examination, or of testing the qualifications of Candidates of the different licensing Colleges or Corporations of Medicine, Surgery, and Pharmacy."

Under these heads the authors will be pleased to make such suggestions as may occur to them respecting the improvement of the profession, with the view of rendering it more useful to the public, and a more respectable body than it is at present. In these suggestions the authors will be pleased to consider the preliminary and moral education of Medical and Surgical Students, as well as the mode of conducting their professional studies.

"In considering the third head, or mode of testing the qualifications of Candidates by the licensing bodies, the authors will please to consider the most practical mode of rendering the examination as demonstrative as possible—i.e., in Anatomy, by having the dead subject placed before the candidate; in Chemistry, Botany, and Pharmacy, specimens of minerals, plants, and pharmaceutical preparations placed before him; and in the Practice of Physic and Surgery, the candidate to be placed before the patients in the wards of an hospital, as the testator is certain that this will afford the most certain and only true mode of ascertaining the qualifications of candidates."

Each Essay is to be distinguished by a device or motto, and accompanied by a sealed packet, containing the name and address of the author, also distinguished by the same device or motto. The Essays are to be lodged at the College on or before the first day of July, 1917.

No Essay shall exceed 65,000 words in length, and all quotations and extracts from any published work, pamphlet, or paper, shall be by reference merely to the volume and page on which the passage desired to be quoted is to be found.

The President and Council will not consider themselves bound to award the Prizes should the Essays not appear to them to possess sufficient merit.

By order of the Council.

C. M. BENSON, F.R.C.S.,

Secretary of the Council.

Dublin, June 2nd, 1916.

EDUCATION.-DAUGHTERS

of Medical men special terms. Excellent School Residential Pupils only. Illustrated Prospectus from PRINCIPAL, MARLBOROUGH COLLEGE, BUXTON, DERBYSHIRE.

WHY WORRY SEEKING A SCHOOL?

Information and Prospectuses Free. Any locality (Boys, Girls). State age, requirements, some idea fees.—Secretary, SCHOOLS AGENCY, 62, King Street, Manchester.

Doctors' A/c Forms printed

in best style on good paper—1000, 12s. 6d. Letter heads, Post Card heads, Calling Cards, &c., at equally moderate rates.—R. ANDERSON & SON, Printers, 1, Hill Place, Edinburgh. Tel. 6034 Central. DOCTOR'S TESTIMONIALS printed or typed for all posts, best work, quick dispatch. 30 yrs' speciality.

Huddersfield Royal Infirmary.

Wanted, a SENIOR HOUSE SURGEON, fully qualified (either sex). Males must be ineligible for Military Service. Salary £150 per annum, with board, residence, and laundry. Applications, stating age, with copies of testimonials, to be sent to Mr. J. BATE, Secretary, Royal Infirmary, Huddersfield.

Bury Infirmary.

Wanted a JUNIOR HOUSE SURGEON, Male or Female (Male must be ineligible for Military Service). Must have both Medical and Surgical qualifications. Salary £150 per annum, with board, residence and washing. Among other duties the person appointed will have charge of the Children's Ward, the Ophthalmic Department, Casualty and Out-patients' Departments, and the administration of Anesthetics.

Applications, stating age and nationality, with testimonials and photograph, to be sent at once to the Honorary Secretary, Infirmary, Bury, Lancashire.

University of Durham.

A NEW ROLL OF SERVICE is being compiled.—The Editor will be glad of information as to the names and military record of members of the University who have lost their lives during the War or are still serving in H.M. Naval or Military Forces.—Address, REGISTRAR, University Offices, Durham.

Wanted, in colliery and
agricultural district. ASSISTANT, male (ineligible for army) or female, married or single. Work light. £200 to commence, house, coal, gas, attendance. State nationality. One desiring permanency preferred.—Address, No. 2425, BRITISH MEDICAL JOURNAL Office, 429, Strand, W.C.

Wanted by ineligible, doubly
qualified man, an ASSISTANTSHIP, with view to succession, in London, London suburbs, or in the S.W. of England. Considerable experience.—Address, No. 2403, BRITISH MEDICAL JOURNAL Office, 429, Strand, W.C.

Wanted at once, an outdoor
ASSISTANT (ineligible for Military Service) in a colliery Practice. Work light. Dispenser kept. Salary £250 per annum with rooms and attendance.—Address, No. 2106, BRITISH MEDICAL JOURNAL Office, 429, Strand, W.C.

Wanted appointment by
M.R.C.S., L.R.C.P., served at the Front for a year, and mentioned in dispatches.—Address, No. 2371, BRITISH MEDICAL JOURNAL Office, 429, Strand, W.C.

Wanted, engagement as
LOCUM by Englishman, ineligible, public school. Bachelor, middle-aged. Great deal of experience in good class, also colliery practices.—Address, No. 2407, BRITISH MEDICAL JOURNAL Office, 429, Strand, W.C.

Assistant wanted, in a general
Practice in the country, with a view to Partnership at the end of a year. Little night work, excellent prospects. Must be ineligible for Military Service. Indoors. Principal a bachelor. £250 p.a. A good surgeon, with knowledge of eye work, and single preferred.—Address, with direct references, No. 2367, BRITISH MEDICAL JOURNAL Office, 429, Strand, W.C.

M.B., B.Ch., at present
Senior Medical Officer of Union Institution, desires similar POST in non-manufacturing district, or CHARGE of SANATORIUM. Ineligible, married, eight years Institution experience. Excellent record.—Address, "Medico," c/o G. A. PEACE, Esq., 48, Castle Street, Liverpool.

Colonies.—Wanted by several
clients with experience of tropical medicine, ineligible for the Army, APPOINTMENTS in the Colonies or Abroad.—Apply, BLUNDELL & RIGBY, Walter House, 418/422, Strand, London, W.C.

Edinburgh Graduate, late
Government Medical Officer (47), willing, in view of war needs, to FILL ANY VACANCY. Experienced, resourceful, vigorous, temperate. Highest references. Moderate terms.—Address, No. 2391, BRITISH MEDICAL JOURNAL Office, 429, Strand, W.C.

Medical man, M.D., etc.,
invalided after seven months' service, glad to hear of remunerative PART TIME or WHOLE TIME WORK in London. Held present post three months.—Address, No. 2404, BRITISH MEDICAL JOURNAL Office, 429, Strand, W.C.

Cambridge and Conjoint man
with ten years' experience of all classes of Practice, extremely well received, has four or five afternoons free a week. In or near London.—Address No. 2409, BRITISH MEDICAL JOURNAL Office, 429, Strand, W.C.

Final year Medical Student,
Edinburgh, desires temporary post, August 4 and September, as CLINICAL ASSISTANT, HOUSE-SURGEON, or HOUSE-PHYSICIAN in General Hospital or Asylum. Board and residence in Hospital. State terms.—Address No. 2405, BRITISH MEDICAL JOURNAL Office, 429, Strand, W.C.

A medical student, through
the whole course and sitting for a part of his final next month, would be pleased to HELP a surgeon or a physician in London, or in a hospital under its supervision.—Address, No. 2420, BRITISH MEDICAL JOURNAL Office, 429, Strand, W.C.

Locum Tenens.—No fee to
principals.—Mr. PERCIVAL TURNER has a large staff of trustworthy Locum Tenens and will be happy to send one at short notice.—Address, 4, Adam Street, Adelphi, London, W.C. Telegrams: "Epsomian, London." Telephone, Gerrard, 399.

Locum Tenens.—F.R.C.S.,
over military age, accustomed both to hospital work and private practice, is open to engagements in or near London. £6 6s. a week and expenses.—Address F.R.C.S., c/o DEACON'S, Leadenhall Street, E.C.

LOCUM TENENS PROVIDED

at ONE hour's notice from our staff of thoroughly reliable gentlemen. Apply

ARNOLD & SONS,

Surgical Instrument Manufacturers,

TRANSFER DEPARTMENT,

6, GILTSPUR STREET, LONDON, E.C.

Telegrams: "Instruments, London." Telephone 5240 City.

Locum Tenens, married,
ineligible, wanted for four weeks, preferably in August or August and Sept. in healthy London, S.E. suburb. Practically no nightwork. Terms: £5 5s. and hospitality for wife. Personal interview and highest references necessary.—Address No. 2458, BRITISH MEDICAL JOURNAL Office, 429, Strand, W.C.

Locum Tenens wanted
immediately.—Mr. PERCIVAL TURNER has numerous vacancies in Town and Country, for reliable Locum Tenentes (ineligible for Military Service). Recent references required.—Apply, personally (if possible), between 10 and 4, to 4, Adam Street, Adelphi, Strand, W.C.

Locum wanted fortnight in
August. Country. Must cycle or be able to motor-cycle. Could entertain Hospitality locum with hire of trap.—ADAMS, Rillington, York.

Locum Tenens provided.—
PEACOCK & HADLEY, 19, Craven Street, Strand, W.C., are prepared to send reliable and well-experienced gentlemen to take charge of town or country Practices at short notice. References investigated in all cases.—Phone: Central 1112. Wires: "Herbaria, Westrand, London."

Locum Tenens wanted at once
(ineligible for Military Service). Must have good references.—Apply (personally if possible), Transfer Dept., ARNOLD & SONS, Surgical Instrument Manufacturers, 6, Giltspur Street, London, E.C. (opposite St. Bartholomew's Hospital).

Locum at liberty after July
4th (over age), active, and have continuously taken charge busy practice since War. Private panel and colliery.—Please give particulars and terms offered to "Locum," c/o Dr. HARRISON, Haslingden, near Manchester.

As Locum.—Medical man,
married (ineligible), free at once. Experienced and well received by patients. Good references. State terms with full particulars.—Address, No. 2379, BRITISH MEDICAL JOURNAL Office, 429, Strand, W.C.

Hospitality Locum (Derby-
shire).—Half the usual fees are offered to a medical man (accompanied by his wife) who will take charge of a light country practice for about three weeks from July 6th. Work very light and no cycling necessary.—Address, No. 2423, BRITISH MEDICAL JOURNAL Office, 429, Strand, W.C.

M.B.Lond. (retired) wants
WAR LOCUM TENENCY in country. Motor and drives necessary. Could bring own servants and run house.—Address No. 2421, BRITISH MEDICAL JOURNAL Office, 429, Strand, W.C.

M.B., B.C., on furlough from
abroad, is free to act as LOCUM TENENS or TEMPORARY ASSISTANT. Midlands, near Nottingham preferred. Light work desired rather than high remuneration.—Address, JACOBOW, 15, Cavendish Vale, Sherwood, Nottingham.

Seaside Locum required for
August by experienced, reliable and well-received medical man, with hospitality for wife and child.—Address, No. 2378, BRITISH MEDICAL JOURNAL Office, 429, Strand, W.C.

Good Locums can now be
obtained from LEE & MARTIN, 93, Hall Road, Handsworth, Birmingham.

Ship's Surgeon required for
Steamer leaving for South Africa about the end of the month. Remuneration £15 per month.—Write giving qualifications, &c., to ZY 355, c/o DEACON'S, Leadenhall Street, E.C.

Surgeon wanted for Steamer
for voyage out to Bombay and back (ineligible for Military Service). Salary £15 per month with 10 per cent. bonus.—Write "X," 785, c/o SHELLEY'S Advertising Offices, 38, King William Street, E.C.

Ship's Surgeon (ineligible for
Military Service).—Messrs. ELDER DEMPSTER AND Co., Limited, have a few vacancies for Surgeons in their West African Service. Steamers call at Maderia, Canary Islands, and West African ports. Pay £15 per month. Fees allowed for attendance on passengers. Length of voyage varies from six to ten weeks, according to particular route.—Apply, Medical Superintendent, Messrs. ELDER, DEMPSTER AND Co., Limited, Colonial House, Liverpool.

Doctor interested and
experienced in the Diseases of Children and Tuberculosis desires appointment, married (no family) age 49 years.—Address, No. 2308, BRITISH MEDICAL JOURNAL Office, 429, Strand, W.C.

Lady Dispenser (Hall), wants
post.—Address, No. 2357, BRITISH MEDICAL JOURNAL Office, 429, Strand, W.C.

Lady Dispenser and Book-
keeper disengaged. Six years' testimonial. Experienced in private and panel Practice.—RICHARDSON, 6, Grange Road, Smethwick, Staffs.

Lady Dispenser desires
re-engagement; experienced in hospital and practitioner's work. Good testimonials.—Address, No. 2392, BRITISH MEDICAL JOURNAL Office, 429, Strand, W.C.

Lady Dispenser (Hall), Book-
KEEPER, age 29, disengaged July and August, desires POST with Doctor, in or near London. 2½ years' experience; 18 months in large Midland practice.—Address, 2428, BRITISH MEDICAL JOURNAL Office, 429, Strand, W.C.

Lady Dispenser seeks post
with a Doctor. Hall qualification and some experience.—Address, No. 2432, BRITISH MEDICAL JOURNAL Office, 429, Strand, W.C.

Woman Dispenser (qualified).
Disengaged. Doctor or Institution. Experienced. Free June 26th.—Address, "B. P.," c/o BROWN, 21, Tophill Street, Westminster, S.W.

Wanted, in a large industrial
district, a Panel and General PRACTICE. Receipts not less than £70 per annum. Can pay £100 down and the balance by instalments. Open to negotiate at once.—Send full details in confidence to Dr. O., c/o ARNOLD & SONS, Transfer Dept., 6, Giltspur Street, London, E.C. (opposite St. Bartholomew's Hospital).

Wanted by M.D., age 47, a
PRACTICE of £1,000 a year on the coast of Devon or Cornwall.—Apply, BLUNDELL & RIGBY, Walter House, 418/422, Strand, London, W.C.

Wanted, small easy Practice.
—Bachelor. Nice place near London, e.g., Farnham, Tunbridge Wells, Sevenoaks, etc. State premium, rent, fees, full details. Strictest confidence.—Address, No. 2208, BRITISH MEDICAL JOURNAL Office, 429, Strand, W.C.

Wanted, within easy reach of
Bayswater, a Cash and Panel PRACTICE. Receipts about £500 per annum, with scope. Free to negotiate at once.—Send full details in confidence to Dr. C., c/o ARNOLD & SONS, Transfer Dept., 6, Giltspur Street, London, E.C. (opposite St. Bartholomew's Hospital).

Wanted by ineligible M.B.,
F.R.C.S., a good-class country PRACTICE of £1,000 a year in Scotland.—Apply, BLUNDELL & RIGBY, Walter House, 418/422, Strand, London, W.C.

Wanted in Midlands or N.W.
counties non-panel PRACTICE, or panel under 500. Near town or city. Income £600 to £900. Modern house and grounds essential. Capital available. Ineligible.—Address, No. 2104, BRITISH MEDICAL JOURNAL Office, 429, Strand, W.C.

Wanted a Partner, with view
to purchase entire Practice, in an old-established panel and general Practice in S. Staffs. Industrial locality. Receipts £1,300-£1,400 per annum.—Address, No. 370, BRITISH MEDICAL JOURNAL Office, 429, Strand, W.C.

London.—Private and Panel
(over 3,600) worth £1,500. No midwifery. Easily worked. Immediate sale.—Address, No. 2101, BRITISH MEDICAL JOURNAL Office, 429, Strand, W.C.

Urgent.—War sale. £800 a
year for £400. Old-established country PRACTICE, near sea, in Eastern county on rail. Opposition slight. Large house and garden. Rent £50. Good sport and schools.—Apply, No. 5951, c/o Mr. PERCIVAL TURNER, 4, Adam Street, Strand, W.C.

For disposal; Practices or PARTNERSHIPS.—Messrs. ARNOLD & SONS, Surgical Instrument Manufacturers, have been instructed to privately dispose of a large number of really good Practices and Partnerships. Gentlemen are requested to state their requirements and amount of capital available. No charge to purchasers.—Address, ARNOLD & SONS, Transfer Dept., 6, Giltspur Street, London, E.C. (opposite St. Bartholomew's Hospital).

For disposal.—A good Practice.—TICE is not always to be had directly, but Mr. PERCIVAL TURNER can generally offer applicants something suitable. Nearly all the best Practices are sold by him without being advertised.—Full information free on application to 4, Adam Street, Adelphi, Strand, W.C.

For sale.—In one of the principal towns in Devonshire, small PRACTICE, good house and garden, and possible Resident Patient. Owner retiring from practice. Terms extremely moderate.—For further particulars address, No. 2372, BRITISH MEDICAL JOURNAL Office, 429, Strand, W.C.

To Purchasers.—Do not buy without a full investigation by an expert. Thirty-six years experience has given Mr. PERCIVAL TURNER an unique ability to advise in all cases. Terms free on application to 4, Adam Street, Strand, W.C. Telephone: Gerrard 399. Telegrams: "Epsomian, London."

Urgent.—War Sale.—Un-opposed Country Practice will be sold for one year's purchase of appointments only. Appointments £160. Price £160. Income average; £400-£500. Easily worked. Very little night work. Good house, rent £27.—Address, No. 2360, BRITISH MEDICAL JOURNAL Office, 429, Strand, W.C.

£1,500 a year.—West of England.—Urgent sale. Very old-established PRACTICE in large residential town in S. West county. Panel over 1,500. Visits 3s. 6d. to 21s. Midwifery from 42s. not many. Good large corner house in best situation. Hospital, schools, &c., close. Partnership introduction. Personally known and recommended.—Apply, No. 5980, c/o Mr. PERCIVAL TURNER, 4, Adam Street, Strand, W.C.

Practice for disposal, working class district near large town in Yorkshire. Owner retiring.—Apply, EXELL BROS., Sheffield.

Practice for sale.—Belgravia. Near Victoria, S.W.—Small premium, easy payments. Particulars to Principals only at interview. No agents.—Address No. 2388, BRITISH MED. JOURNAL Office, 429, Strand, W.C.

£500 a year for £200.—War sale. Increasing ready-money PRACTICE in pleasant suburb. Rent £33. Working class Practice chiefly.—Apply, No. 5989, c/o Mr. PERCIVAL TURNER, 4, Adam Street, Strand, W.C.

Yorkshire.—Well established working-class PRACTICE. Average receipts £575. Panel 680. Fees 2s. to 4s. Very great scope. Rent £33. Good accommodation. Premium £250 or near offer.—LEE & MARTIN, Medical Agents, 93, Hall Road, Handsworth, Birmingham.

Partnership.—Staffordshire. Old established better working and middle-class Practice. Receipts last year £2,400. Average for last 20 years £2,000. Panel 1,600 to 1,700. Several public and other appointments. Visiting fees 3s. 6d. to 12s. 6d. Fees at surgery 2s. 6d. upwards. Introduction. Unlimited scope. Rent £40. Vendor joining Army. Premium for Half Share £1,200.—LEE & MARTIN, 93 Hall Road, Handsworth, Birmingham.

Home County.—£500 a year, in beautiful residential district, within 30 miles of London on rail. No opposition. Good fees. Detached house and garden; rent under £50. Very safe investment. Good society, sport, &c. Premium 1 year's purchase.—Apply, No. 5988, c/o Mr. PERCIVAL TURNER, 4, Adam Street, Strand, W.C.

Birmingham.—Old-established easily worked PRACTICE. No night work. Receipts £450. Panel £190. Expenses very low. Ample accommodation. Rent £50. Premium—any reasonable offer considered, part down and balance by instalments. Can be largely increased if night work and midwifery undertaken.—LEE & MARTIN, 93, Hall Road, Handsworth, Birmingham.

Lincs.—Exceptional offer. Town and country PRACTICE in first-class residential and agricultural district. Receipts average £850 a year. Excellent family residence, garden, garage, &c.; rent £30. Vendor going abroad will accept £400 or near offer.—Apply, PEACOCK & HADLEY, 19, Craven Street, Strand, W.C.

Shropshire.—Death Vacancy.

Mostly working-class PRACTICE. Receipts last year £1,000 approximately. Appointments £150. Fees 1s. 6d. to 4s. 6d. Panel 950. Practically unopposed. Rent £30. Ample accommodation. Premium—reasonable offer considered.—LEE & MARTIN, 93, Hall Road, Handsworth, Birmingham.

Seaside Practice, over £800

a year.—Good increasing Practice in residential Seaside Resort on north-west coast. Easily worked. No midwifery taken. No conveyance required. Small panel. Good corner house and garden. Any introduction required given. Good reason for sale. Less than one year's purchase accepted.—Apply No. 5991, c/o Mr. PERCIVAL TURNER, 4, Adam Street, Strand, W.C.

Death Vacancy.—Leeds.—

Easy terms. £1,250 a year. Panel and other appointments £950. No horse required. Rent only £24. No night work taken. Easy terms of payment to prompt buyer.—Apply, No. 5997, c/o Mr. PERCIVAL TURNER, 4, Adam Street, Strand, W.C.

Death Vacancy.—Country

town, Lancs. Private bookings for 1914 and 1915 average £200. Panel £132. Appointments of M.O.H. and hospital £105 per annum. Certifying Factory Surgeon. Referee to four Life Insurance Societies. Rent about £35. Premium by arrangement. Practice in late incumbent's hands over forty years. Introduction by widow and son, who will continue to reside in the town.—Address, No. 2402, BRITISH MEDICAL JOURNAL Office, 429, Strand, W.C.

Death Vacancy in Yorkshire

City. Panel over £600, appt. £150; private practice over £400. No midwifery. Expenses very light. Efficient Locum Tenens in charge. Easy terms conceded.—Apply HERBERT NEEDES, 199, Piccadilly, W.

Medical.—Good opening in

busy manufacturing town near Manchester. Prominent position, main road. Rent £30.—Address, No. 2380, BRITISH MEDICAL JOURNAL Office, 429, Strand, W.C.

Somerset.—£350 a year.—

Easily worked PRACTICE in a charming locality on rail. Easily worked with cycle. Good detached house and large garden. Rent £50. Valuable sanitary and other appointments. All sport. Price £250. Vendor joining R.A.M.C.—Apply, No. 5996, c/o Mr. PERCIVAL TURNER, 4, Adam Street, Strand, W.C.

Outlying Suburb.—Cash and

panel PRACTICE. Receipts at the rate of £300 a year. Panel 900. No midwifery or distant cases taken. Scope for increase. No conveyance. Rent £30. Premium £500, small amount down, rest by instalments.—Apply, PEACOCK & HADLEY, 19, Craven Street, Strand, London, W.C.

Manchester residential

district.—Good class and old-established PRACTICE for sale. Owner retiring. Very nice house with garden, rent £65. Receipts over £900. Fees 3s. 6d. to 21s. Non-dispensing and non-panel. Price £1,000, part deferred of £800 cash.—MANCHESTER MEDICAL AND SCHOLASTIC ASSOCIATION, 8, King Street.

Panel and cash Practice

wanted to purchase in London by L.R.C.P., M.R.C.S. (ineligible) to produce about £500 a year.—Address particulars in confidence. No. 2406, BRITISH MEDICAL JOURNAL Office, 429, Strand, W.C.

£900 for £400.—A general

PRACTICE situated in a country district in Lincs. Panel £140 p.a. Fees 2s. 6d. to 15s. Midwifery one to five guineas. Large old-fashioned house containing 6 bedrooms, etc. Open to every investigation.—Apply, ARNOLD & SONS, Transfer Dept., 6, Giltspur Street, London, E.C. (opposite St. Bartholomew's Hospital).

Yorks.—Splendid opportunity.

—Good country PRACTICE. Receipts £1,354. Excellent house. Fees 2s. to 21s. Beautiful country. Premium £1,000. Good introduction. Small sum down.—Address, No. 2426, BRITISH MEDICAL JOURNAL Office, 429, Strand, W.C.

For Sale, Clément Motor

BROUGHAM, 10-12 h.p., magneto ignition, live back axle, perfect running order. Price £75.—THWAITES, Clarence Lodge, Clapham Park, London.

Liveries.—Chauffeur's, Coach-

MAN'S, FOOTMAN'S.—Large Stock, all colours, Top Coats, under Coats, Breccias, Macintoshes, Leggings, Hats, Caps, Gloves, Carriage and Motor Rugs, best cloths, best make on approval. Send for Price List.—ARMSTRONG, 33, Connaught Street, Marble Arch, London, W.—Telephone: 1999 Paddington.

During the War.—Service

DRESS and COMPLETE EQUIPMENT can be supplied to medical men who have obtained Commissions in the R.A.M.C. and Navy in 21 hours by Messrs. HARRY HALL. Unequalled value, perfect fit, and accuracy in every detail is guaranteed. Innumerable unsolicited appreciations have been received from satisfied officers. Patterns, abridged Price List, and if desired a simple self-measurement form, post free on application to Messrs. HARRY HALL, 207, Oxford St., W., or 149, Cheapside, E.C.

IMPORTANT.—Visitors to London

can order and be fitted the same day. 'Phones: Museum 820 and City 2086. Telegrams: "Hallzone," London, and "Arriarle," London.

X-Ray and high-frequency

APPARATUS, couch, accessories complete, for sale. Works off mains or accumulators. Low price for quick sale.—Particulars, write "Electric," 18, Lothair Road, Finsbury Park, London, N.

Portland Place.—The oppor-

tunity occurs of securing, at an exceptionally low rent, one of the SMALL HOUSES in this well-known situation, suitable for professional occupation. Full particulars may be had of the Sole Agents, SAMUEL B. CLARK & SOX, 8, New Cavendish Street, Portland, Place, W.

Brighton.—House to Let,

occupied by doctor (now on Service) as MEDICAL HOME 13 years. Few doors sea; close West Pier. Contains 21 rooms; rent £100. Part furniture, fixtures can be bought if required.—Write Lieutenant COMPTON, R.A.M.C., 34, Bedford Square, Brighton.

Oxford Eye Hospital.

HOUSE SURGEON wanted, man or woman, British. Board, lodging and laundry. For further particulars apply to the Hon. Secretary.

Bolton Infirmary and

DISPENSARY. (162 Beds, mostly Surgical, including Children's Wards). Applications for the appointment of a THIRD HOUSE SURGEON are invited from Ladies having a registered Medical and Surgical qualification. Salary £180 per annum, with apartments, board and attendance. Applications, stating age, with copy of testimonials, should be forwarded to the undersigned, from whom further particulars may be obtained.

ALBERT E. BRISCOE, Secretary.

Bolingbroke Hospital

(Incorporated), Wandsworth Common, S.W.

RESIDENT MEDICAL OFFICER required. Appointment for one year or for duration of the war. Salary £300 per annum, with board-residence and laundry. Opportunity for experience in Operative Surgery. Applications, with not less than three testimonials, to be sent in not later than Wednesday, 12th July, to the Secretary, Medical Committee, Bolingbroke Hospital, Wandsworth Common, S.W.

Bolingbroke Hospital

(Incorporated), Wandsworth Common, S.W.

HOUSE SURGEON required (Male, not of Military age, or Female). Salary £200 per annum, with board-residence and laundry. Applications, with not less than three testimonials, to be sent in not later than Wednesday, 12th July, to the Secretary, Medical Committee, Bolingbroke Hospital, Wandsworth Common, S.W.

Great Yarmouth Hospital.

(72 Beds).

Patients treated during the year: In-patients, 586; Out-patients, 3,632; operations in Theatre, 247; minor operations in Out-patients Department, 314. HOUSE SURGEON (male), unmarried, non-military age, or physically unfit for War service, or female (unmarried) required 17th July, 1916. Salary £200 a year, with board, lodging, and washing. Will be required to deliver lectures to Probationer Nurses. Applications, to be accompanied with not more than four testimonials, to be sent on or before 4th July, 1916, to

RICHARD F. E. FERRIER, Hon. Secretary.

16, South Quay, Great Yarmouth.

London Temperance Hospital,

Hampstead Road, N.W.—Applications are invited for the post of ASSISTANT RESIDENT MEDICAL OFFICER. The appointment is for six months, and will be vacant on June 30th, 1916. Honorarium at the rate of £120 a year, with residence, board and laundry. Ineligible for Military Service. Applications, with testimonials, should be sent to the SECRETARY.

APPOINTMENTS.—Important Notice.

(a)—British Islands.

Medical Practitioners are requested not to apply for any appointment referred to in the following table without having first communicated with the Medical Secretary of the British Medical Association, 429, Strand, London, W.C.

Town or District.	Town or District.	Town or District.
CONTRACT ENGLAND.	PRACTICE. WALES (continued).	WALES (continued).
COVENTRY. (As regards Dispensary Appointments.)	CLYDACH-ON-TAWE, YSTALYFERA, YSTRADGYNLAIS, and SWANSEA VALLEY. (Medical Aid Associations.)	RISCA, YNYSDDU and CWMFELINFACH. (Colliery Appointments.)
FOREST OF DEAN. (Medical Aid Associations.)	CWMTWRCH AND DISTRICT. (Medical Aid Society.)	POOR LAW. ENGLAND.
READING. (Amalgamated Friendly Societies' Medical Association.)	EASTERN VALLEYS, MONMOUTHSHIRE. (Workmen's Medical Association.)	BURNLEY UNION. (District Medical Officer.)
WORCESTER. (Amalgamated Friendly Societies' Medical Association.)	GARW VALLEY. (Medical Aid Society.)	PUBLIC HEALTH. ENGLAND.
WALES.	GORSEINON DISTRICT. (Medical Aid Society.)	HORNSEY. (Part-time Assistant Medical Officer of Health to act in connection with a Scheme of Maternity and Child Welfare Work.)
ABERCRABE. (Medical Aid Association.)	LLWYNPIA, GLAMORGAN. (Colliery Appointments.)	WINCHESTER. (Lady Assistant Medical Officer of Health.)
ABERTILLEY. (Colliery Appointment.)	NEATH AND DISTRICT. (Medical Aid Society.)	TUBERCULOSIS APPOINTMENT. ENGLAND.
BLAINA. (Blaina and District Medical Aid Association.)	OAKDALE, MON. (Medical Officer for Model Village and Cottage Hospital.)	METROPOLITAN BOROUGH OF LAMBETH. (Assistant Tuberculosis Officer.)
BRITON FERRY. (Workmen's and General Institution for Medical and Surgical Treatment.)		

(b)—Colonial.

Medical Practitioners are requested not to apply for any appointment referred to in the following table without having first communicated with the Honorary Secretary of the Division or Branch named in the second column, or with the Medical Secretary of the British Medical Association, 429, Strand, London, W.C.

Town or District.	Hon. Sec. of Division or Branch.	Town or District.	Hon. Sec. of Division or Branch.	Town or District.	Hon. Sec. of Division or Branch.
NEW SOUTH WALES. (All Friendly Society and Education Department Appointments as Medical Officers, &c.)	Dr. R. H. TODD. (Hon. Sec., New South Wales Branch), B.M.A. Building, 30-34, Elizabeth Street, Sydney, N.S.W.	QUEENSLAND. (Brisbane Associated Friendly Societies and Australian Natives Association.)	Dr. E. D. AHERN (Hon. Sec., Queensland Branch), B.M.A. Buildings, Adelaide Street, Brisbane.	VICTORIA. (All Friendly Society Lodge Appointments.)	Dr. L. S. LATHAM (Hon. Sec., Victorian Branch), 54 Collins Street, Melbourne, Victoria.
		SOUTH AUSTRALIA. (Friendly Societies Dispensaries.)	Dr. A. CAMPBELL MAGAREY (Acting Hon. Sec., South Australian Branch), North Terrace, Adelaide, South Australia.	WELLINGTON, NEW ZEALAND. (Friendly Society Lodge Appointments.)	Dr. H. E. GIBBS (Hon. Sec., New Zealand Branch), 123, Willis Street, Wellington, New Zealand.

Address: 429, Strand, W.C.

June 21st, 1916.

By order of the Council of the British Medical Association.

ALFRED COX, Medical Secretary.

South Devon and East CORNWALL HOSPITAL, Plymouth (189 beds).

The Committee invite applications for the appointment of a qualified **HOUSE PHYSICIAN**, male (ineligible for Military Service) or female, no age limit, to commence duties on 15th July. Salary £150, with board, residence and washing. Candidates should send copies of not more than three testimonials to the undersigned.

P. J. LANGDON, Secretary.
Plymouth, 9th June, 1916.

Royal Albert Edward INFIRMARY AND DISPENSARY, Wigan (168 beds, mostly Surgical).

Wanted immediately, a **SENIOR HOUSE SURGEON**. Ineligible for Military Service. Salary £250 per annum, with board, apartments, and washing. Candidates must be doubly qualified and registered, and be prepared to enter into an agreement not to practise in the Wigan Union for a period of three years from the date of appointment.

Applications, stating age, experience, and qualifications, with three recent testimonials, to reach the undersigned at once. Canvassing a disqualification.

L. E. MAPEI, Acting Secretary.

The Guest Hospital, Dudley. (110 Beds.)

Wanted a **SENIOR RESIDENT MEDICAL OFFICER**, qualified (ineligible for Military Service). A knowledge of Ophthalmic and X-ray work desirable.

Salary £150 per annum, with board, residence, and washing.

Applications, stating age and nationality, and enclosing copies of recent testimonials, to be sent to the Secretary, at the Hospital, at once.

The Royal Infirmary, Sheffield.

HOUSE PHYSICIAN.

Wanted a **RESIDENT MEDICAL OFFICER** (ineligible for Military Service) for the above post.

The person appointed will have charge of the Medical Beds under the supervision of the Honorary Medical Staff. Salary £120 per annum, with board and residence.

Applications, with copies of recent testimonials, to be addressed to me immediately.

By Order,

JNO. W. BARNES, Secretary.

The South London Hospital FOR WOMEN.

The Board of Management invite applications from fully qualified Medical Women for the post of **PATHOLOGIST**. Applications for part time work only during the War will be considered. Salary at the rate of £250 per annum. The appointment to date from September 1st.

Full particulars may be obtained from the Secretary. Canvassing members of the Board is not allowed.

Applications, with copies of testimonials, to reach the Secretary, 88 & 90, Newington Causeway, S.E., not later than first post on Saturday, July 8th, 1916.

Derbyshire Royal Infirmary, Derby.

Applications are invited for the post of **HOUSE SURGEON**. Candidates must be qualified and registered under the Medical Acts. Salary £200 per annum, with board, residence, etc.

The Hospital contains 337 beds, of which 144 are reserved for wounded soldiers. Further particulars on application.

By Order,

E. FORSTER, Secretary.

12th June, 1916



Bristol Royal Infirmary.

Applications are invited for appointments as **HOUSE SURGEONS** and **HOUSE PHYSICIANS**.

These appointments will be made subject to the term and conditions of the War Office Scheme for granting Commissions in the R.A.M.C., for which the successful candidates will be eligible.

Salary at the rate of £120 per annum, with board, apartments and laundry.

Candidates must possess registered Medical and Surgical qualifications.

For full particular and conditions governing these appointments apply to the undersigned, to whom applications, accompanied by copy testimonials, should be sent.

Vacancies occur at frequent intervals.

W. E. BUDGETT,
14th June, 1916. Secretary & House Governor.

County Borough of Barnsley.

**BARNSELY AND WAKEFIELD JOINT
SANATORIUM COMMITTEE.**

**APPOINTMENT OF RESIDENT TUBERCULOSIS
OFFICER.**

The Committee invite applications for the post of Assistant Tuberculosis Officer for the Borough and Resident Medical Officer at Mount Vernon Sanatorium. Salary £500 per annum, with Board and residence.

Particulars of duties and form of application may be obtained from the undersigned, to whom applications on the prescribed form *are to be sent on or before the 10th day of July, 1916, endorsed "Resident Medical Officer."*

W. P. DONALD,
Town Clerk and Clerk to the Joint Committee.
Town Clerk's Office, Barnsley, 19th June, 1916.

Queen's Hospital for Children,

Hackney Road, Bethnal Green, E.

HOUSE PHYSICIAN and **HOUSE SURGEON** required, 6 months appointments. Salary £100 p.a. with board, residence and washing. Candidates, men (enrolled or ineligible for Military Service) or women, must possess a medical and surgical qualification.

Applications, with copies of testimonials, to be sent as soon as possible to

T. GLENTON-KERR, Secretary.
14th June, 1916. Telephone: DALSTON 305.

Victoria Hospital for Sick CHILDREN, Hull.

HOUSE SURGEON required (end of July). Salary £100 per annum, with board, residence and laundry.

Candidates (women) must possess medical and surgical qualifications.

Applications, with copies of three testimonials and photograph, should be sent before the 10th July, 1916, to the Secretary of the Institution, Hull.

St. Bartholomew's Hospital,

London, E.C.

**ASSISTANT ADMINISTRATOR OF
ANÆSTHETICS** (non-resident).

The Committee invite applications for the above office.

Candidates must be registered practitioners. Applications, with testimonials, must be left with the undersigned, from whom further particulars may be obtained, on or before Monday, the 10th July, 1916.

June, 1916. THOMAS HAYES,
Clerk to the Governors.

Birmingham and Midland Eye HOSPITAL, Church Street, Birmingham.

The Committee of Management invite applications from duly qualified practitioners for the post of **RESIDENT SURGEON** to this Hospital. Candidates must be ineligible for Military Service, and must possess experience in Ophthalmic work.

Salary £200 to £300 per annum (according to experience), residence and board, with £5 laundry allowance. Applications, with testimonials, stating qualifications, etc., should be sent to the undersigned, from whom further particulars can be obtained.

J. W. PEARCE,
General Superintendent and Secretary.
June 20th, 1916.

Manchester Northern HOSPITAL FOR WOMEN AND CHILDREN, Park Place, Cheetham Hill Road, Manchester.

Wanted at once, a duly qualified **LADY HOUSE SURGEON**. Salary, with apartments and board, £120 per annum.

Applications, with testimonials, stating age and experience, to be sent to Mr. HUBERT TEAGUE, Secretary, 38, Barton Arcade, Manchester.

Queen Charlotte's Lying-in HOSPITAL, Marylebone Road, N.W.

ASSISTANT RESIDENT MEDICAL OFFICER, male (ineligible for Military service) or female, required. Applicants must be registered. The appointment is for four months. The selected candidate will be expected to proceed to the appointment of Senior Resident Medical Officer (also for four months) at the end of the term of office on the recommendation of the Medical Staff. The salary of the Assistant Resident Medical Officer is at the rate of £60 per annum, and of the Senior Resident Medical Officer £80 per annum, with board, residence and washing. Applications, with copies (not originals) of not more than three testimonials, will be received by the Secretary up to July 5th. Canvassing is prohibited. Duties to commence on 1st Aug., 1916.

ARTHUR WATTS, Secretary.

Manchester Children's HOSPITAL.

Wanted a lady **RESIDENT MEDICAL OFFICER** (Locum Tenens) from 1st July to 17th July. Apply, stating essential particulars, to the Secretary, Manchester Children's Hospital, Pendlebury.

Wanted Superintendent for the MANCHESTER BABIES' HOSPITAL.

General training necessary; Special training in Infant and Social work desirable. Duties include general supervision of Hospital and training of Probationers. Salary £100 a year, resident. Apply to Hon. Sec., Mrs. SIDNEY McDUGALL, Tiverton, Hale, Cheshire.

Great Northern Central HOSPITAL, Holloway, London, N.

Applications are invited for the post of **HOUSE SURGEON**. Male candidates must be ineligible for Military service. The appointment is for six months, with salary at the rate of £100 per annum, with board, residence and laundry.

Applications, accompanied by copies of testimonials, should be sent in as soon as possible to

GILBERT G. PANTER, Secretary.

St. Paul's Hospital for Skin AND GENITO-URINARY DISEASES, Red Lion Square, W.C.

Vacancy for qualified medical man as **HONORARY CASUALTY OUT-PATIENT SURGEON**.—Apply, A. W. JOHNSTON, Hon. Secretary.

City of Leeds.

**HOSPITALS FOR INFECTIOUS DISEASES
AND TUBERCULOSIS.**

ASSISTANT MEDICAL OFFICERS.

Wanted, two Certified Assistant Medical Officers, one permanently for the General Hospital and one temporarily for the Tuberculosis Hospital.

Salary in each case at the rate of £250 per annum, with board, lodging and washing.

Applications, stating age, experience and qualifications, with copies of recent testimonials, addressed to the undersigned, and endorsed "Medical Assistant," to be delivered not later than 1st July next.

ROBERT E. FOX, Town Clerk.

Leeds, 12th June, 1916.

The Royal Infirmary, Sunderland.

Wanted **LADY HOUSE SURGEON**. Candidates must be fully qualified and registered. Salary £150 per annum, with board, residence and laundry. There are 240 beds for patients, and at present two Lady Residents, a third being required.

Applications, stating age, with copies of three recent testimonials, to be sent to the undersigned.

THOMAS ROBINSON, Secretary.

June 8th, 1916.

Beckett Hospital, Barnsley. (120 Beds—50 for wounded.)

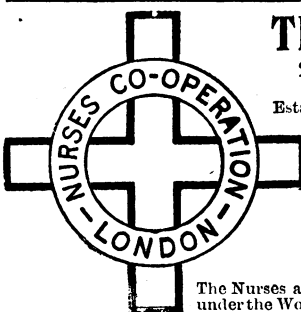
MATRON required early in September. The Committee invite applications for the post of Matron. Salary £60 a year. The applicant must be a fully trained Nurse, capable of taking charge of the housekeeping and general domestic management of the Institution. There is a separate Nurses' Home, where the Matron has her own sitting-room and bedroom in addition to an office in the Institution.

Applications, with three testimonials, should be received by the undersigned on Monday, the 10th July. Canvassing will disqualify a candidate.

R. F. PAWSEY, Honorary Secretary.
8, Regent Street, Barnsley. 21st June, 1916.

Matron required at Bailbrook

HOUSE PRIVATE ASYLUM, Bath.—Lady aged from 28 to 38, and holding the Nursing Certificate of the Medico-Psychological Association. The Salary commences at £70 per annum, with board, lodging and laundry. Applications, with copies of three recent testimonials, to reach the Medical Superintendent by 10th July.



THE NURSES' CO-OPERATION, 22, Langham Street, Portland Place, W.

FOUNDED 1891.

INCORPORATED 1894.

Established to secure to Nurses the full remuneration for their work and to supply

FULLY-TRAINED HOSPITAL

MEDICAL
SURGICAL
MENTAL
MATERNITY
FEVER
CHILDREN'S
MASSAGE

NURSES

To work under medical supervision.

The Nurses are fully insured by the Co-operation against the Employers Liability under the Workmen's Compensation Act, 1906.—Miss HOADLEY, Lady Superintendent.

Telegraphic Address: "Aprons, London."

Telephone 6742 and 6743 Mayfair.

MALE NURSES TEMPERANCE CO-OPERATION LTD.

Telephones—

London: 538 PADDINGTON.

Birmingham: 2106 MIDLAND.

Manchester: 4099 CENTRAL.

Edinburgh: 2715 CENTRAL.



Telegrams—

ASSUAGED, LONDON.

ASSUAGED, BIRMINGHAM.

ASSUAGED, MANCHESTER.

ASSUAGED, EDINBURGH.

London —10, THAYER STREET, MANCHESTER SQUARE, W.

Birmingham—75, HAGLEY ROAD.

Manchester—237, BRUNSWICK STREET (Facing Owens College).

Edinburgh—7, TORPHICHEN STREET.

All Nurses are Fully Insured against Accident.

Trained Male Nurses & Valet Attendants for Mental, Medical, Travelling & all cases.

Terms £2 2s. to £3 3s.

Please Address all Communications—W. WALSHE, Secretary.

THE LONDON TEMPERANCE NURSES CO-OPERATION } 18, ADAM STREET,
PORTMAN SQUARE,
LONDON, W.
Telephone: 2202 MAYFAIR. Telegrams "NURSLONTEM, BAKER, LONDON."
Supplies Fully Trained Hospital Nurses, also **MENTAL AND MALE NURSES.**
Nurses Insured against Accident. TERMS FROM £2 2s. TO £3 3s. APPLY SECRETARY.

MENTAL NURSES ASSOCIATION, Ltd.
54, George Street,
Manchester Sq., W.
(MALE and FEMALE)
Telephone: MAYFAIR 2287. Superior Mental Nurses (Male and Female)
Telegrams: supplied at a moment's notice Day or Night
"ISOLATION, LONDON." for Nerve and Mental Cases.
NURSES FULLY INSURED AGAINST ACCIDENT. Apply SECRETARY.

London Hospital Private
NURSING STAFF.—TRAINED NURSES
for Adults and Children for Medical, Surgical,
Maternity, or Massage Cases can be had immediately.
Apply Matron, London Hospital, Whitechapel.
Telephone: No. 5020 Avenue.
The nurses on the private staff return to the
wards between their cases after sufficient rest, so
that their work and knowledge are kept thoroughly
up to date.

GENERAL 5, MANDEVILLE PLACE,
Manchester Square, W.
Established 1862, at Henrietta Street, Covent Garden.
Thoroughly experienced Hospital-trained NURSES
supplied at a moment's notice being
Specially trained NURSES for Mental Cases worked
under the system of Co-operation. Apply to the
SUPERINTENDENT.
Telephone: Mayfair 115.
Telegraphic Address: "Nutrix Wesdo, London."

Telephone: Mayfair 7070.
Telegrams: Firths Association, London.
THE LONDON ASSOCIATION OF NURSES.
123, NEW BOND STREET, W.
Hospital Trained Nurses, experienced in
Private Nursing, supplied for every kind
of illness. Also Mental and Male Nurses.
Apply, LADY SUPERINTENDENT.

Telephone: PADDINGTON 2437.
Telegrams: ASSISTIAMO, LONDON.
MALE NURSES' ASSOCIATION
29, YORK STREET,
BAKER STREET, LONDON, W.
ESTABLISHED 14 YEARS.
Permanent Staff of Resident Male Nurses.
We supply fully trained male nurses for all cases.
Thoroughly experienced men with special training
for mental work. Masseurs supplied for town
or country. W. J. HICKS, Secretary.

THE MENTAL NURSES' CO-OPERATION,
49, Norfolk Square, Hyde Park, London, W.
Telephone: ESTAB. 1907. Telegraphic Address:
6533 Paddington. Nursental, London.
Fully trained and experienced Nurses for MENTAL,
NERVOUS, and MASSAGE CASES supplied
immediately. All nurses insured under the
Employers' Liability Act of 1906.
Apply to Miss JEAN HASTIE, Superintendent.

THE NEW MENTAL NURSES CO-OPERATION,
139, Edgware Road, Marble Arch, W.
Specially trained Nurses for Mental and Nerve
cases. All Nurses are insured against accident.
Apply the SUPERINTENDENT.
Telegrams: "Psyconurse Edge London." No. 6105 Paddington

LEE & MARTIN
(THE BIRMINGHAM MEDICAL AGENCY)
93, HALL ROAD, HANDSWORTH, BIRMINGHAM
TELEGRAMS: "Locum, Birmingham." 191, Northern, B'ham.
TELEPHONE:

Transfers of Practices and Partnerships arranged.
Accounts Investigated & Income-tax Returns prepared.
"LOCUMS" AND ASSISTANTS SUPPLIED.

ST. JOHN'S HOUSE.
Trained and experienced Medical, Surgical,
Maternity, NURSES and MASSEUSES can be
obtained by application, personally or by letter, to
the Sister Superior, 12, Queen Square, Bloomsbury.
Telephone No. 5099 Central (P.O.).
Telegraphic Address: "Private Nurses, London."

**York Road (General Lying-
IN HOSPITAL, Lambeth, S.E.—Established**
1765. Patrons, H.M. THE QUEEN and H.M. QUEEN
ALEXANDRA. Medical Students and Qualified Prac-
titioners admitted to the Practice of this Hospital.
Telephone, 794 Central. For rules, fees, etc., apply
ROSE E. WHYTE, Secretary.

**THE MANCHESTER CLERICAL,
MEDICAL AND SCHOLASTIC
ASSOCIATION, Ltd.**
The oldest MEDICAL Agency in Manchester.
8, KING STREET.

Telegraphic Address: "STUDENT, MANCHESTER."
TRANSFERS and PARTNERSHIPS arranged, and
Investigations, Valuations, &c., undertaken.
ASSISTANTS & LOCUM TENENS SUPPLIED.
PRACTICES for sale. Particulars on application.

SPECIAL NOTICE.

The **LISTS** of the following
Medical Agents, viz.:—

Dr. J. FIELD HALL
(FIELD HALL Limited)

HERBERT NEEDES

J. C. NEEDES

PEACOCK & HADLEY

PERCIVAL TURNER

THE MEDICAL AGENCY
(J. A. REASIDE)

will appear in alternate weeks
in the BRITISH MED. JOURNAL.

BLUNDELL & RIGBY.
Walter House, 418-422, Strand, W.C.
(Entrance Bedford Street.)
Telephone: 7118 GURHARD.
Cable Address: (via Eastern) "RECALLABLE,
LONDON."

LOCUMS SUPPLIED.

Far East.—Locum required
for about 9 months.
Hants.—Increasing Practice
of £500 in fashionable seaside resort.
London, S.W.—Lock-up
SURGERY. Receipts about £600. Premium
only £450. Scope.
London, S.E.—Old-established
PRACTICE let down owing to illness.
Receipts £250. Panel 600. Premium only £100.
Great scope.

Birmingham suburb.—Old-
established PRACTICE of over £900. Panel
nearly £400. Excellent house, specially built.
Premium 1 year's purchase, £400 down.

North-East Coast.—Partner-
SHIP.—HALF SHARE of £1,800 with great
scope for increase.

Death Vacancy.—Old-estab-
lished PRACTICE in nice country town in
Hants. Receipts average £911, last year over
£1,000. Rent £40. Cottage hospital. Panel
about £300. Patients all classes. Incumbent
killed in action.

Midlands.—Unopposed
PRACTICE of £930 in agricultural district.
Panel 680 at 9s. Appointments £120. House
has 2 reception rooms, 5 bedrooms, dressing-
room, large garden, &c.; rent £25. Shooting,
hunting, fishing, and golf near. Premium
£850, part deferred.

Essex Suburb.—Cash and
Panel PRACTICE of £700. Panel 900. No
midwifery. Great scope for increase. Rent £30.
Premium £500, on easy terms.

Yorks.—Unopposed Practice
of £950 in agricultural district. Fishing, shoot-
ing, hunting, &c. Scope. Appointments and
panel £300. Premium £900, £400 down.

East Coast.—Old-established
PRACTICE in prosperous town. Receipts
over £1,000. Convenient house. Rent £45.
Premium only £650, part by instalments.

London, S.W.—Partnership
with Succession. Good middle-class Practice.
Receipts last year £1,707. Panel 1,750. Scope
for Surgery.

Surrey.—Middle-class Practice
in good town with Hospital. Receipts £530.
Small panel. Good house, with 6 bedrooms,
garden. Rent £60. Premium 1 year's purchase.
£750. Appointments £200. Station. Good
modern house. Reasonable premium.

Lake District.—Unopposed
PRACTICE in picturesque part. Receipts about
£750. Appointments £200. Station. Good
modern house. Reasonable premium.

Death Vacancy.—Partnership.
Share worth £600 with early increase, in nice
market town with hospital. Plenty of scope for
energetic man. Premium payable on easy terms.

London, S.W.—Good middle
class PRACTICE with cash and panel at branch
surgery. Receipts £1,320. Panel 1,750. Mid-
wifery refused. Plenty of scope. Exceptionally
good house. Premium £1,250, on easy terms.

Lock-up Surgery.—Receipts
£900. Panel 2000. No midwifery. Rent £23.
Premium £750; £300 down or £600 cash.

Home County.—Unopposed
PRACTICE, over £1,100 per annum. Appoint-
ments £100, panel £400. Good house and
garden; rent £85. Golf, tennis, sailing, &c.
Premium 1 year's purchase, £400 down and
instalments.

West Riding.—Old-estab-
lished PRACTICE in small town in country
district. Receipts about £1,200. Panel and
appointments £700. House has waiting-room,
consulting-room, surgery, 2 reception rooms, 8
bedrooms, bathroom; rent £45. Premium £1,000,
£200 down and instalments.

Residential district near
London. Good middle-class PRACTICE of
over £1,400. Good house and garden. Opposi-
tion slight. Golf, &c.

Purchasers stating their requirements can have
Particulars of other Practices not advertised.

THE SCHOLASTIC, CLERICAL AND MEDICAL ASSOCIATION, LIMITED

(ESTABLISHED IN 1880 BY MR. G. B. STOCKER.)

22, CRAVEN STREET, TRAFALGAR SQUARE, W.C.

Telegraphic Address, "TRIFORM, WESTRAND, LONDON." Telephone No. 1854 (GERRARD).

Every description of MEDICAL and SCHOLASTIC AGENCY and ACCOUNTANCY.

A Pamphlet relating to the MEDICAL DEPARTMENT, with the names of the DIRECTORS and the MEDICAL ADVISING BOARD, and terms, will be sent post free on application to the General Manager, Mr. A. V. STOREY.

FOR SALE.

- (1) MIDLANDS.—Near county town.—Unop. country PRACTICE of over £500 p.a., including appts. worth £100, panel of about 100. Prem. £250. Scope.
- (2) ESSEX SUBURB.—Cash and Panel PRACTICE of about £700 p.a. including panel of 900. No midwifery. Premium £150 cash. Admirably adapted for "lock up."
- (3) SOUTH OF ENGLAND.—One-third SHARE in Practice of over £2,100 in market town. Visits 2s. 6d. to 15s. Excellent up-to-date Hospital. Scope for surgery. Moderate premium.
- (4) NEAR YORK.—Unopposed Country PRACTICE of £400 to £500, including transferable appointments and panel worth £170 p.a. Rent about £26. Scope to about £700. Premium only £170.
- (5) MANCHESTER.—Cash and Panel PRACTICE about £1,000 p.a. No conveyance. Rent £40. Premium £450.
- (6) CHESHIRE.—PRACTICE in country town, worth about £700, including transferable appts. and clubs over £100 and panel (750). Premium £400.
- (7) KENT.—Sound PRACTICE of about £500 including panel (600) in pleasant outlying district. Premium £300.
- (8) INDIA.—HEALTH AND PLEASURE RESORT.—Very desirable season. PRACTICE of over £800 per season. Visits £1 1s. Little midwifery. No dispensing. Excellent society. Climate temperate and cool all year round. Excellent introduction. Premium £500.
- (9) DORSET COAST.—Good-class PRACTICE of about £1,000, including appointments worth nearly £300. Panel 300 to 400. Good house. Cottage Hospital. Moderate premium.
- (10) SURREY.—Suburban neighbourhood, near Crystal Palace. Middle and working-class PRACTICE of about £1,000 p.a. Panel 1,100 to 1,200. No conveyance. Moderate premium.
- (11) WILTS.—Unop. Country PRACTICE in beautiful district. Receipts average £530 p.a., including appts. worth about £100. Premium £450.
- (12) YORKS. W. RIDING.—Better Working-class PRACTICE of over £950 in manuf. town. Panel 1,100 to 1,200. Prem. £400 (part by instalments).
- (13) LONDON, S.W. SUBURB.—PRACTICE of about £500, capable of increase. Well situated house. Premium £250.
- (14) LAKE DISTRICT.—Unopposed PRACTICE easy distance of two towns. Receipts average nearly £700, including appointments worth about £300. (Panel 500). Premium £500.
- (15) HERTS.—PRACTICE, averaging over £750, in pleasant country town and good residential district. Premium one year's purchase.
- (16) LONDON, N.—Sound mixed-class PRACTICE of about £600 p.a. in outlying suburb. No panel or midwifery. Premium £300.

FOR SALE—continued.

- (17) YORKS.—WEST RIDING. PRACTICE nearly 2000 in large manufacturing village. Panel worth £100 or more. Rent £33. Prem. £250 or near offer.
- (18) DEATH VACANCY.—Leytonstone.—PRACTICE of £100 p.a. (£100 from Panel). Scope for considerable increase. Premium £100.
- (19) DEATH VACANCY.—HANTS.—PRACTICE of about £1,000 in good residential district close to important seaport. Cottage Hospital.
- (20) SALOP.—PRACTICE of over £600 (including good appointments) in delightful country district. Premium £300.
- (21) YORKS. W. RIDING.—Compact and easily worked PRACTICE of about £650, in town, within easy reach of Leeds. Panel over 1000. Prem. £250.
- (22) LONDON, S.W. SUBURB.—Easily worked PRACTICE in pleasant suburb. Receipts 1915 over £900. Panel about 500. Premium £800.
- (23) WEST OF ENGLAND.—PRACTICE of £600 p.a. in Inland Watering Place and Health Resort. Fees 3s. 6d. to £1 1s. Premium £400.
- (24) DERBYSHIRE.—Near County Town. Safe country PRACTICE of £850 p.a. (appointments £150, panel 1,000). Excellent house, specially built. Premium £600 (including book debts, &c.), or less for cash. Vendor joining R.A.M.C.
- (25) HERTS.—Unopposed country PRACTICE of between £650 and £700 p.a. (appointments and panel bring in £100 a quarter). Premium £500.
- (26) S.E. COAST.—PRACTICE in small town. Receipts 1915, £830 (over £300 from panel). Premium £500.
- (27) DEATH VACANCY.—DERBY.—PRACTICE worth £700 to £800 (nearly £800 from panel and clubs). Practically no midwifery.
- (28) SOUTH OF ENGLAND.—Good-class PRACTICE in favourite Inland Health Resort. Receipts 1915, £945. No dispensing, panel, or mids.
- (29) LONDON, S.W.—PARTNERSHIP in Practice of £1,700 in good residential suburb. Panel 1,750. One-third or one-half on easy terms.
- (30) DEATH VACANCY.—SHROPSHIRE.—PRACTICE of £1,000 p.a. in country town. Panel and appts. worth £550 p.a. Moderate premium.
- (31) NORTH KENSINGTON.—Middle-class PRACTICE of £630 p.a., capable of considerable increase. Panel 400. Premium £550.
- (32) LONDON, S.W.—PRACTICE of about £1,200 in pleasant suburb. Panel over 1,800. Premium £1,000.
- (33) NEAR SALISBURY.—Unopposed PRACTICE in an attractive part (over £500 p.a.). Panel 512. Premium £350.
- (34) DERBYSHIRE.—Country PRACTICE of about £600 p.a. Panel 283. Premium £500.
- (35) NORTH-EAST OF ENGLAND.—Near Lake District. Unopposed country PRACTICE of £1,000. Panel 650. Moderate premium.

NO CHARGE TO PURCHASERS. ASSISTANTS AND LOCUM TENENS SUPPLIED. ARBITRATIONS, etc.

Medical Partnerships, Transfers, and Assistantships (Barnard & Stocker).
New Revised and amplified Edition published by the Association. (Price 10s. 6d. net. Post free 11s.).

THE RETREAT, YORK.
TRAINED NURSES' DEPARTMENT.
Staffed by Nurses who have been trained for four years in the Retreat, and conducted upon a profit-sharing basis. Mental and Nervous cases only undertaken. Terms from Two to Three Guineas weekly.
Apply, MATRON, Retreat, York. Nat. Tel. 112.

MILDMAY NURSING INSTITUTION,
9 & 10, NEWINGTON GREEN, N.
Fully-trained NURSES for Medical, Surgical, Maternity, and Fever Cases to be had immediately on application to the Superintendent.
Telegraphic Address: "NURSING, LONDON."
Telephone No. 141 Dalston.

ST. LUKE'S HOSPITAL,
OLD STREET LONDON.
TRAINED NURSES for Mental and Nervous Cases can be had immediately.
Apply, MATRON. Telegrams: "Envoy, Finsquare, London." Telephone 5608 Central.

Tel. 2253 MAYFAIR.

THE CO-OPERATION OF TEMPERANCE MALE & FEMALE NURSES,

60, WEYMOUTH STREET, PORTLAND PLACE, LONDON, W.

Reliable and experienced Nurses for all cases at all hours. Skilled Masseurs and Masseuses supplied.
Nurses Insured against accident. Terms £1 11 6 to £3 3. M. SULLIVAN, Secretary, or Lady Superintendent.

TEMPERANCE MALE NURSES CO-OPERATION LTD

TELEGRAMS:
Tactear, London.
Tactear, Manchester.
Surgical, Glasgow.
Tactear, Dublin.

TELEPHONES:
London, 1277 Mayfair
Manchester, 5213 Central.
Glasgow, 477 Central.
Dublin, 531 Ballsbridge

Superior trained Male Nurses for Medical, Surgical, Mental, Dipsomania, Travelling and all cases. Nurses reside on the premises, and are always ready for urgent calls, Day or Night. Skilled Masseurs and good Valet Attendants supplied. All Nurses insured against accident. Terms from £1 16 6. M. D. GOLD, Secretary.

ASSOCIATION OF MALE NURSES, LTD.

PLEDGED ABSTAINERS ONLY EMPLOYED. ALL NURSES INSURED AGAINST ACCIDENTS.

24, NOTTINGHAM STREET, Nottingham Place, LONDON, W.

Trained Male Nurses and Valet Attendants for Mental, Medical, Travelling and all cases. Terms £2 2s. to £3 3s. M. J. QUINLAN, Secretary.

Telegrams: "GENTLEST, LONDON."

Telephone: 5969 MAYFAIR.

GOLD MEDAL International Congress of Medicine, London, 1913.
MIST. HEPATICA CONC. (Hewlett's).

COMPOSITION.—Ext. Cascara, Ext. Rhel, Jalapin, Podophyllin, Cocainæ Hydrochlor., 1-12th gr. in each fluid drachm.

THIS excellent compound, first introduced as a general aperient and cholagogue, has now become a popular remedy, and attention has very recently been called to the value of the mixture, by various authorities, in that class of cases spoken of as Chronic Bilioussness, in Catarrhal Jaundice, and in the Jaundice of simple Hepatic Torpor. In passive or habitual Congestion of the Liver, so frequently met with, it has been used with marked benefit.

In the treatment of acute or temporary constipation, frequently met with in the convalescence from acute disease, and in pregnancy or in the constipation due to sedentary habits, to a deficiency of intestinal secretion, and of peristalsis, the mixture can be prescribed with wonderful effect, positively curing cases that have resisted other remedies.

The Dose is from 10 to 60 minims, according to the age and condition of the patient. One drachm is a direct aperient, and is not accompanied by griping or tenesmus.

Packed for Dispensing only in 10-oz.; 22-oz.; 40-oz.; and 90 oz. Bottles.

Please write: "Mist. Hepatica Conc. (HEWLETT'S)" to ensure obtaining this Preparation.

C. J. HEWLETT & SON, Ltd., Wholesale and Export Druggists and Manufacturing Chemists,
35 to 42, CHARLOTTE STREET, LONDON, E.C.

VILLACABRAS

*Exclusive Property
 of a
 French Company*

The Natural Purgative Mineral Water

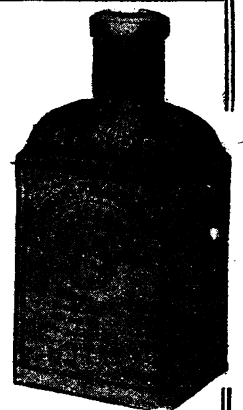
"The mineral richness of the purgative water of VILLACABRAS (122.05 per litre) is superior to that of any other known purgative. It enables the use of a smaller quantity for a similar effect."

Full-size Sample Bottle and Pamphlet sent to any Practitioner on request.

THE VILLACABRAS COMPANY, LYONS, FRANCE.

E. DEL MAR, 12, Mark Lane, London.

All Chemists and Drug Stores.



"BEAUTIFULLY COOL AND SWEET SMOKING."

**PLAYER'S
 Navy Cut Tobacco**

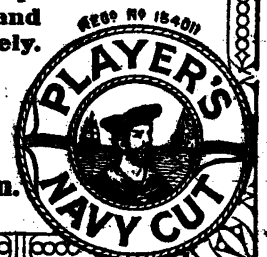
Packed in varying degrees of strength to suit every Class of Smoker.

Player's Gold Leaf Navy Cut } PER OZ.
 Player's Medium Navy Cut } 7^{D.}
 Player's "Tawny" Navy Cut }
 Player's "White Label" Navy Cut 6^{D.}

Also **PLAYER'S NAVY CUT DE LUXE** a development of Player's Navy Cut, packed in 2 oz. and 4 oz. airtight tins at 1/6 and 3/- respectively.

For distribution to wounded British Soldiers and Sailors in Military Hospitals at home, and for the Front at **DUTY FREE RATES.** Terms on application to:—

JOHN PLAYER & SONS, Nottingham.



Issued by The Imperial Tobacco Co. (of Great Britain & Ireland). Ltd.

THE USE OF THE TRADE MARK

"Semprolin"WILL SECURE FOR YOUR PATIENT
A PREPARATION CONTAINING THE
PUREST RUSSIAN LIQUID PARAFFINanswering all B.P. requirements, of high specific gravity,
ALL-BRITISH refined and specially suited for internal use

Issued:

- (a) As an EMULSION containing 60% of Liquid Paraffin
- (b) As a CREAM containing 90% of Liquid Paraffin
- (c) In combination with SALOL, BISMUTH, IRON, GUAIACOL, etc
- (d) As the PLAIN OIL (which answers stringent B.P. tests)

Samples free to Medical Men

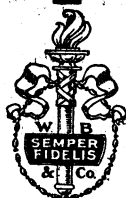
WILLIAM BROWNING & CO.

Manufacturing Chemists,

4 Lambeth Palace Road, London, S.E.

Telephone: "HOP 3217."

Telegrams: "SEMPROLIN, LAMB, LONDON."



ERGOAPIOL (Smith)

For
**AMENORRHEA
DYSMENORRHEA
MENORRHAGIA
METRORRHAGIA
ETC.**

ERGOAPIOL (Smith) is supplied only in packages containing twenty capsules.

DOSE: One to two capsules three or four times a day.

SAMPLES and LITERATURE SENT ON REQUEST.

MARTIN H. SMITH COMPANY, New York, N.Y., U.S.A.
SOLE BRITISH AGENTS:
T. CHRISTY & CO., OLD SWAN LANE, LONDON, E.C.

KEROL

KEROL combines all the properties which go to the making of an ideal preparation. It has been shown to be practically non-toxic, non-irritant and non-corrosive - a combination of properties which make it the one preparation which can be used with perfect confidence wherever the use of either a disinfectant or antiseptic is indicated. It is of high and definite germicidal value and is perfectly homogeneous.

KEROL is highly recommended by bacteriologists and by prominent members of the Medical Profession.

KEROL CAPSULES.

INTESTINAL These are of great value where intestinal antiseptics is indicated. In a comparatively short space of time the coli content of the intestine is reduced by over 99 per cent. They are non-irritant and perfectly safe.

STOMACHIC For use in cases of stomach fermentation and other gastric troubles, and are of great value in reducing the number of malarial organisms prior to administration of treatment with lactic ferments, i.e. sour milk, etc.

Samples and literature sent free to any Medical Practitioner.

QUIBELL BROS LTD
151 Castlegate
NEWARK



Bynin' Amara

FORMULA :

Quinine Phosphate	1½ grains.
Iron Phosphate	2 "
Nux Vomica Alkaloids (equal to Strychnine)	⅛ grain.
"Bynin," Liquid Malt	1 ounce.

"A distinct advance on Easton's Syrup"

THE LANCET.

"Bynin" Amara

is an analogue of Easton's Syrup, over which it has, however, marked advantages. In this product, "Bynin," a pure, nutritious and highly active Liquid Malt, supersedes the inert basis of the official preparation.

"Bynin" Amara

is vastly superior to Easton's Syrup; the dose can be regulated with exactness; the digestive organs are reinforced and the system is invigorated by its powerful tonic action. It not only assists the digestion of food, but conserves and ensures complete assimilation.



Explanatory Pamphlet and Sample Free to Medical Men.

Allen & Hanburys Ltd.
Lombard St. London.

Niagara Falls, N.Y. Toronto Buenos Aires, Ushakov, Sydney.