

# HEWLETT'S SPECIALS



## MIST. PEPSINÆ CO. C. BISMUTHO (HEWLETT'S)

Useful in all forms of Dyspepsia, Pyrosis, Gastric Pain, and Vomiting, and for alleviating the pain in cases of Ulcer and Cancer of the Stomach.

DOSE.—3 ss to 3 j diluted.

"Messrs. Hewlett's preparation of Pepsin and Bismuth is of standard excellence. The combination is a particularly good one for the treatment of diseases of the stomach which require a sedative."

*Medical Review*, August, 1905.



## Liq. Santal Flav. c. Buchu et Cubeba (HEWLETT'S)

Since its introduction it has been largely prescribed all over the world as a specific in certain cases.

DOSE.—3 j to 3 ij in water or milk.

"Experience has shown this preparation to possess the same efficacy as Santal Oil itself."—*Practitioner*.

## VIROPHOS.

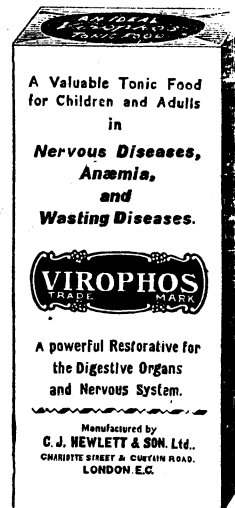
**An Ideal Tonic Food. Easily Digested.  
FOR CHILDREN AND ADULTS.**

"VIROPHOS.—This consists of Casein, Extract of Malt, and Sodium Glycerophosphate. It is pleasantly flavoured, and makes an excellent tonic food in all conditions of debility and wasting diseases. It is distinctly more palatable than many preparations of a like nature."

*The Medical Annual*, 1917.

Samples and Literature sent to Medical Men on request.

Obtainable from all Chemists, in tins, in four sizes, from 1/3 to 6/-.



## C. J. HEWLETT & SON LTD

Telegraphic Address,  
"PEPSINE NORTON, LONDON"

Telephones. 1172 LONDON WALL  
5271 CENTRAL