

Valentine's Meat-Juice

In **Typhoid Fever, Diarrhoea and Cholera Infantum**, when it is **Essential** to **Sustain** the patient **without irritating** the **Digestive Organs**, the **Ease of Assimilation** and **Power of Valentine's Meat-Juice** to **Restore and Strengthen** has been demonstrated in Hospital and Private Practice.

THE quickness and power with which VALENTINE'S MEAT-JUICE acts, the manner in which it adapts itself to and quiets the irritable stomach, its agreeable taste, ease of administration and entire assimilation recommend it to physician and patient.



Physicians are invited to send for brochures containing clinical reports.

For sale by European and American Chemists and Druggists.

VALENTINE'S MEAT-JUICE COMPANY,

Richmond, Virginia, U. S. A.

British Medical Journal.

JUNE 30TH, 1917.

CONTENTS.

ORIGINAL ARTICLES.

- The Technique of Nerve Suture.**
By S. ALWYN SMITH, D.S.O., Ch.M.,
F.R.C.S. Edin., Temporary Major
R.A.M.C. 861
- Observations on Chloramines as
Nasal Antiseptics.** By E. K.
DUNHAM, M.D., and H. D. DAKIN,
D.Sc., F.R.S. 865
- Clinical Notes on a Case of Fibroid
Disease of Bursae.** By Captain
MANFRED MORRIS, R.A.M.C.(T.F.).... 867
- Bronchoscopy in the Treatment of
Asthma.** By W. S. SYME, M.D.,
F.R.S.E. 868
- A New Culture Medium for the
Gonococcus.** By Captain D. THOMSON,
R.A.M.C., M.B., Ch.B. Edin., D.P.H.
Cantab. 869
- A Note on the Value of Brilliant
Green as an Antiseptic.** By Captain
C. H. S. WEBB, M.S., F.R.C.S.,
R.A.M.C. 870
- Flies and Bacillary Enteritis.** By
WILLIAM NICOLL, M.A., D.Sc., M.D.,
D.P.H. 870
- The Croonian Lectures on Adaptation
and Disease.** By J. G. ADAMI, M.D.,
F.R.S., Lieut.-Colonel C.A.M.C. 872
- MEMORANDA.**
- A Case of Enterospasm.** By A.
CLIFFORD MORSON, Temp. Surgeon
R.N. 873
- A Method of Preparing and Using
Catgut.** By G. S. THOMPSON, F.R.C.S. 873
- Electrolysis in Open Suppurating
Wounds.** By D. N. COOPER, M.R.C.S.
L.R.C.P. 875

REVIEWS.

- Military Orthopaedics.** (Illustrated).... 874
- Evolution in the Light of Heredity**..... 875
- Notes on Books** 875

LEADING ARTICLES.

- RE-EXAMINATION OF EXCEPTED MEN**.... 879
- THE MESOPOTAMIA REPORT**..... 880

THE WEEK.

- Care of the Disabled Soldier**..... 881
- Anthrax and Shaving Brushes**..... 882
- Studies of Intestinal Diseases from the
Mediterranean** 882
- Army Medical Report, 1913** 882
- Tetanus Lighted up by Operation** 883
- Synthetic Sunshine**..... 883
- The Kew Bulletin**..... 883
- The Half-yearly Indexes for 1917**..... 883

THE WAR.

- THE WAR COLLECTION OF PATHO-
LOGICAL SPECIMENS AT THE ROYAL
COLLEGE OF SURGEONS OF ENGLAND.** 887
- "A DAY'S WORK"**..... 887
- TETANUS IN HOME MILITARY HOSPITALS.** 888
- CASUALTIES IN THE MEDICAL SERVICES.** 889
- NOTES—**
- French Honours for Medical Women.** 890
- Medical Officer's Gifts to the Red
Cross**..... 890

GENERAL ARTICLES AND NEWS.

- THE MESOPOTAMIA COMMISSION**..... 875
- MOTOR NOTES FOR MEDICAL MEN.** By
H. Massac Buist..... 877
- MEDICAL NOTES IN PARLIAMENT:**
- Medical Re-examinations of Excepted
Men**..... 884
- Casualties among Medical Officers** 886
- MEDICAL NEWS**..... 895

OBITUARY.

- Lieut.-Colonel Frederick William Henry
Javie Harris, R.A.M.C.(retired)**..... 895
- John Walters, M.B.Lond**..... 895
- Henry Campbell, M.D.**..... 895

LOCAL NEWS.

- ENGLAND AND WALES—**
- Dr. Glynn of Liverpool**..... 890
- Central Midwives Board**..... 891
- Oxford Orthopaedic Centre** 891
- IRELAND—**
- The Irish Medical Profession and
the War** 891

CORRESPONDENCE.

- The Co-ordination of British Medical
Policy.** By W. Gordon, M.D.,
F.R.C.P.; S. J. Ross, M.D., and others. 892
- Quo Vadis?** By J. A. W. Pereira, M.D. 893
- Ministry of Health.** By E. F. Pratt,
M.B., B.S. 893
- The Shortage of Medical Officers:
Possibility of Relief from India**..... 893
- The Grievances of Territorial Medical
Officers** 894
- Anthrax in Uganda.** By F. W. Eurich,
M.D. Edin. 894
- Dermatitis from Explosives Used in
the Air Raid.** By James H. Sequeira,
M.D., F.R.C.P. 894

THE SERVICES.

- Exchange**..... 894

UNIVERSITIES AND COLLEGES.

- UNIVERSITY OF EDINBURGH**..... 894
- UNIVERSITY OF GLASGOW**..... 894
- VICTORIA UNIVERSITY OF MANCHESTER.** 894
- SOCIETY OF APOTHECARIES OF LONDON.** 894

LETTERS AND ANSWERS.

- QUERIES, ANSWERS, ETC.** 896

The SUPPLEMENT contains:—

- British Medical Association:**
- Current Notes:** Quarterly Meeting of
Council.—Indian Practitioners and
Combatant Service.—Rural Prac-
titioners and the Insurance Advisory
Committee.
- Insurance Acts Committee:** Report on
the Future of the Insurance Acts, with
Questions and Synopsis of Answers.

JOHN BALE, SONS & DANIELSSON, LTD.,

PRINTERS, PUBLISHERS, AND PROCESS BLOCK MAKERS,

NOW READY.

SECOND ENGLISH EDITION.

CLINICAL SURGICAL DIAGNOSIS

FOR STUDENTS AND PRACTITIONERS.

By Professor F. DE QUERVAIN, Director of the Surgical Clinic, University of Basle. Translated by J. SNOWMAN, M.D.
862 pp., with 604 Illustrations and 5 Coloured Plates. Royal 8vo. Price 35s. net. Postage: Inland, 7d.; Abroad, 2s.

83, 85, 87, 89, & 91, GREAT TITCHFIELD STREET, OXFORD STREET, LONDON, W.1

INDEX TO ADVERTISEMENTS.

COVER.

PUBLISHERS.

Adlard, Son and Newman.	1
Lepton, O.—Treat. of Diabetes Mellitus.	1
Arnold, E.	1
Sibley, K.—Diseases of the Skin.	1
Bathmore, Tindall and Cox.	1
Hayes, R.—Intensive Treat. of Syphilis.	1
Lockhart-Mummery, P.—Dis. of Rectum	1
Bale, Sons and Danielsson.	1
Feawick, B.—Uterine Fibroids	1
Common Complaints of Women	1
Worth, C.—Squint	1
Churchill, J. and A.	1
Hare, F.—On Alcoholism	1
Hull, Lt. Col. A. J.—Surgery in War.	1
Lelean, Major P. S.—Sanitation in War.	1
Lewis, H. K. and Co., Ltd.	1
Moullin, C. M.—Enlargement of Prostate	1
The Biology of Tumours	1
Longmans, Green and Co.	1
Kidd, F.—Common Diseases of the Male	1
Urethra	1
Urinary Surgery	1
Macmillan and Co., Ltd.	1
Tubby, A. H.—Deformities	1
CHEMISTS, Etc.—	1
Angier Chemical Co.—Angier Emulsion.	iv
Menley & James, Ltd.—"Dactol"	iii
FOOD PREPARATIONS—	1
Valentine Meat Juice Co.—Meat Juice.	ii
MOTORS, CARRIAGES, Etc.—	1
Gamage, A. W., Ltd.—Motor Tyres	iii
PUBLISHERS.	1
Arnold, E.	1
Berkeley, G.—Midwifery	3
Colles, Sir J.—Malingering	3
Howard, R.—Surgical Nursing, &c.	3
Hurst, A. F.—Med. Diseases of the War	3
Stewart, P.—Nervous Diseases	3
Bale, Sons and Danielsson.	1
Querrain, P. de—Clinical Surg. Diagnosis	1
Macmillan and Co., Ltd.	1
New System of Gynaecology	4
Behnke, E.—Stammering	4
ANÆSTHETICS—	1
Salamon, C., Ltd.—	4
Ether and Chloroform	4
ASSURANCE COMPANIES—	1
Guardian Assurance Company	5
National Provident Institution	26
Prudential Assurance Company	4
BOOTMAKERS, Etc.	1
Holland & Son—Patent Foot Appliances	28
BRASS NAME PLATES—	1
Cooke's Brass Name Plates	26
CHEMISTS, Etc.	1
Allen & Hanbury, Ltd.—	22
Advances in Treatment	23
Byno-Cascade	23
Alliance Drug and Chemical Co.—	40
Price List of Drugs	25
Anglo-French Drug Co.—Iodogenol	25
Cryogenine	24
Mergal	24
Rheumant	24
Supsalys	24

CHEMISTS, Etc.—continued.

Antiphlogistine—Denver Chemical Co.	14
Battley & Watts—Battley's Liquors	14
Boots Pure Drug Co., Ltd.—Halazone	15
Chloramine-T	15
Eurroughs, Wellcome & Co.—	19
"Tabloid" Halazone	19
Clay, Paget & Co.—Glycolactophos.	12
Crookes' Laboratories—Colloids	18
Fellow's Syrup of Hypophosphites	13
Hewlett & Son, Ltd.—Mist. Damiane Co.	12
Howards' Sodii Bicarb. (Tasteless)	28
Peat Products Co., Ltd.—Sphagnum	5
Smith (Martin H.)—Ergocapitol	40
Tidman & Sons—Sea Salt	28
Vinolia Co., Ltd.—Nursery Requisites	16
Wander, Ltd.—Malt Extract	17
Whiffen & Sons—Emetine	19
Wilcox, JozEAU & Co.—Kola Astier	4

CORKS—

West of England Cork Manufac. Co.	26
-----------------------------------	----

FOOD PREPARATIONS—

Allen & Hanbury, Ltd.—Brynogen	21
Benger's Food, Ltd.—	20
Food for Infants and Invalids	20
Brand & Co.—Beef Tea	28
Callard & Co.—Diabetic Foods	4
Frame Food Co.	12
Freeman's Devonshire Custard	28
Keen, Robinson & Co.—Patent Barley	13

MEDICAL AND SURGICAL APPLIANCES—

Arnold & Sons—	10
"Phonophora" Stethoscopes	10
Bailey & Son—Belts, Trusses, &c.	7
All-Glass Syringes	7
"Unger" Transfusion Canula	7
Brown, Boveri & Co., Ltd.—	9
Vaccine Refrigerators	9
Coler & Co.—Spiral Spring Truss	8
Medical Supply Association—	10
"Kompact" X-ray Installation	10
Megarity (S.) & Co.—	6
Mechano-Therapeutic Apparatus	6
Milikin & Lawley—	26
Instruments, Osteology, &c.	26
Norwich Craps Co.—Crepe Bandage	9
Short & Mason—Sphygmomanometer	6
Esterling Corporation, Ltd.—	6
High-Frequency Generator	6
Surgical Manufacturing Co.—	8
Record Syringes	8
Timpson & Co., Ltd.—Ligatures	28
W. Watson & Sons—Hæmacytometers	8

MINERAL WATERS—

Camwal, Ltd.—Aquasoria	4
Ingram & Royle, Ltd.—Vichy-Celestins	40

MOTORS, CARRIAGES, Etc.—

Beldam Tyre Co., Ltd.	26
Daimler Motor Ambulances	27
McConnell, H. P.—Advisory Expert	35
Singer & Co., Ltd.—Doctor's Car	8
Sunbeam Motor Car Co.	27

SANITARY APPLIANCES—

The Berkefeld Filter	8
----------------------	---

SANATORIA AND HOSPITAL BUILDINGS, Etc.

Browne & Lilly—Open-air Chalets, &c.	26
Humphreys, Ltd.—Huts and Hospitals	11

TAILORING—

Armstrong, T. & M.—Livery Tailors, &c.	26
Burberrys Waterproofs, &c.	26
Hall, H.—Medical Service Dress	35
Thresher & Glenny—Service Kits	25

TYPEWRITERS, Etc.

Taylor, Ltd.—Typewriters	26
--------------------------	----

VACCINE LYMPH—

Roberts & Co.—Calf Lymph	4
--------------------------	---

HYDROM.—

Bournemouth Hydropathic	31
Caterham Hydro. Sanitarium	31
Cleveys Hydro.	31
Smelley's Hydro. Estab. Matlock	31

HOMES AND ASYLUMS—

Farnwood House, Glos.	29
Bethel Hospital, Norwich	29
Bishopstone House, Bedford	29
Boreston Park Asylum	29
Brooke House, Chelton	29
Brunton House, Lancaster	29
Camberwell House, Peckham	30
Chesterfield, Worcester Park	31
Clarence Lodge, Clapham Park	30
Copple, Nottingham	30
Coton Hill Mental Hospital, Stafford	31
Dinrdale Park, near Darlington	31
Epilepsy—David Lewis Colony	28
Epilepsy—Lingfield Epileptic Colony	28
Epilepsy—Maghull, Lancs.	28
Glendessill and Hurst Houses	31
Grove House, All Stretton	29
Haslemere Nursing Home	31
Haydock Lodge Asylum, Lancashire	30
Highbury Hall, Norwich	31
Littleton Hall, Brentwood	29
London Fever Hospital	31
Malling Place, Kent	31
Middleton Hall Private Asylum	30
Moat House, Tamworth	29
Northumberland House, Finsbury Park	30
Northwoods House, Winterbourne	30
Otto House, Kensington	29
Overdale Asylum, Whitfield	31
Peckham House Asylum	30
Residents' Patients	28, 31
Retreat Private Asylum, Armagh	31
Royal Earlswood Institution, Redhill	30
Springside House Asylum, Bedford	30
St. Andrew's Hospital, Northampton	29
St. George's Retreat, Burgess Hill	29
Stretton House, Church Stretton	30
Sylvan Hall, Brighton	31
The Grange, near Rotherham	29
The Grove, Old Cutton	29
Warneford, Oxford	29
Wye House, Buxton	31

SANATORIUMS—

Duff House, Banff, N.B.	32
Grampian Sanatorium	32
Home Sanatorium, West Southbourne	32
Mendip Hills Sanatorium	32
Nordrach-on-Dee	32
Painswick Sanatorium	31
Pendryfryn Hall Sanatorium	32
Stanhope & Wolsingham Sanat. Durham	31
Vale of Clwyd Sanatorium	32

INEBRIETY, Etc.—

Dalrymple Home for Inebriety	29
Homes for Inebriate Women	29
Melbourne House, Leicester	29
Newmans Retreat, Lanarkshire	29

MEDICAL SCHOOLS, Etc.—

London School of Clinical Medicine	33
London School of Tropical Medicine	33
Medico-Psychological Association	33
Queen Charlotte's Lying-In Hospital	33
Royal College of Surgeons of England	33
St. Mary's Hospital Medical School	33
St. Thomas's Hospital Medical School	33

SCHOOLS, Etc.—

Marlborough College, Buxton	33
"Rydal Hurst" Chesterfield	33
St. Edith's School, Brackley, N. Hants	33
Schools Agency, Manchester	33
The Grange, Buxton	33

TUTORS AND LECTURERS—

Examinations—Medical Corresp. College	33
F.R.C.S. Edin. Classes—F. Graham	33
Med. Prelim. Oral Classes—Weymouth	33
University Exam. Postal Institution	33

BATHS, SPAS, Etc.—

Droitwich	26
-----------	----

HOSPITAL, Etc. VACANCIES—

IMPORTANT NOTICE— RE APPOINTMENTS.

Aberdeen Royal Asylum	37
Belgrave Hospital for Children	35
Bristol Royal Infirmary	36
Burton-on-Trent Infirmary	35
Coventry and Warwickshire Hospital	35
Crag Head Hospital, Bournemouth	36
Darlington General Hospital	37
Gloucestershire Royal Infirmary	36
Hampstead General Hospital	36
Leicestershire Education Committee	36
Manchester Children's Hospital	36
Manchester Union	37
National Hosp. & Univ. Schl. of Massage	35
Newcastle-on-Tyne Eye Infirmary	35
Nottingham General Hospital	37
Portsmouth Parish of	37
Queen Charlotte's Lying-In Hospital	36
Royal Victoria & West Hants Hospital	36
Royal Victoria Hospital, Folkestone	37
Salford Union	37
Scottish Women's Hospitals	33
Sheffield Royal Infirmary	36
South Devon & East Cornwall Hospital	36
South London Hospital for Women	37
Stoke-on-Trent County Borough	37
Sunderland County Borough	37
Townley's Military Hospital, Farnworth	35
West Ham Union	37
West Herts Hospital	36
Wolverhampton Eye Infirmary	37
York, City of	35

ASSISTANTS, PRACTICES, Etc.

Assistances Vacant and Wanted	34
Practices Wanted and for Disposal	34, 35

CONTRACT PRACTICE AND

OTHER APPOINTMENTS. IMPORTANT NOTICE— RE APPOINTMENTS.

HOUSE AGENTS—

Bedford & Co.	35
Elliott, Son & Deyton	34

NURSING INSTITUTES—

Army & Navy Male Nurses Co-operation	36
General Nursing Association	36
London Association of Nurses	36
London Hospital Private Nurses	36
London Temperance Nurses Co-operation	37
Male Nurses (Temperance) Co-operation	36
Mental Nurses' Association, Ltd.	37
Mildmay Nursing Institution	36
Strongwick's (Misses) Nursing Agency	36
Nurses Co-operation	37
Retreat, York	36
St. John's House	36
St. Luke's Hospital	36
Temperance Assoc. Male & Female Nurses	36
Temperance Male Nurses Co-operation	36
The Mental Nurses' Co-operation	36
The Nurses' Association	36

TRANSFER AGENTS—

Arnold & Sons	34
Blundell & Rigby	36
Fieldhall, Ltd.	36
Lee & Martin	36
Manchester Clerical & Med. Association	36
Neeses, H.	36
Neeses, J. C.	36
Pencock & Hadley	36
Scholarship, Clerical & Med. Association	36
Turner, P.	36

MISCELLANEOUS—

Anderson & Son—Doctors' Acct. Forms	35
Consulting Rooms to Let	35
Covers for Binding	4
Freehold, &c., Properties for Sale	34

From Mr. EDWARD ARNOLD'S LIST

Just Published.

A. NOTABLE NEW WORK - ON ORIGINAL LINES,

MIDWIFERY

UNDER THE DIRECTION OF

COMYNS BERKELEY, M.A., M.D., M.C.Cantab., F.R.C.P.Lond.,

Obstetric and Gynaecological Surgeon to Middlesex Hospital, &c., &c.

EDITED BY

COMYNS BERKELEY, H. RUSSELL ANDREWS, and J. S. FAIRBAIRN.

Contributors :

H. RUSSELL ANDREWS, M.D., F.R.C.P., Obstetric Physician to the London Hospital.

J. D. BARRIS, M.R.C.P., F.R.C.S., Assistant Physician-Accoucheur, St. Bartholomew's Hospital.

COMYNS BERKELEY, M.D., M.C., F.R.C.P. (see above).

VICTOR BONNEY, M.S., Assist. Obstetric and Gynaecological Surgeon to the Middlesex Hospital.

HAROLD CHAPPLE, F.R.C.S., Obstetric Surgeon to Guy's Hospital.

G. F. DARWALL SMITH, F.R.C.S., Assistant Obstetric Physician to St. George's Hospital.

STANLEY DODD, M.R.C.P., F.R.C.S., Assistant Obstetric Physician to Westminster Hospital.

J. S. FAIRBAIRN, F.R.C.P., F.R.C.S., Assistant Obstetric Surgeon to St. Thomas's Hospital.

T. G. STEVENS, M.D., M.R.C.P., F.R.C.S., Obstetric Surgeon to St. Mary's Hospital.

CLIFFORD WHITE, M.D., M.R.C.P., F.R.C.S., Senior Physician for Out-patients to Queen Charlotte's Hospital.

728 Pages. With more than 300 entirely new Illustrations. 18s. net.

This work marks a new epoch in students' Text-books, inasmuch as the whole of the book represents the considered views and the teaching of all the ten authors, whose names appear on the title page. It must not be considered an ordinary work by ten contributors, as every branch of the subject, text and illustrations, has received full and adequate discussion by all the authors and represents the fruits of their wide experience as Teachers at eight of the large London Hospitals and the three large Lying-in Hospitals. The work can therefore be considered to have reached a high level of authority and uniformity.

New and greatly Enlarged Edition of this Standard Work is just ready.

MALINGERING.

By Sir JOHN COLLIE, M.D., Colonel R.A.M.C.,

Medical Examiner, London County Council; Chief Medical Officer to the Metropolitan Water Board;
President of the Military Board on Neurasthenia, &c., &c.

16s. net.

MEDICAL DISEASES OF THE WAR.

By Major ARTHUR F. HURST, M.A., M.D.Oxon., F.R.C.P.,

Temporary Major, R.A.M.C.; Physician and Neurologist to Guy's Hospital; Neurologist to the Royal Victoria Hospital, Netley; lately Member of the Medical Advisory Committee, Mediterranean Expeditionary Force, and Consulting Physician to the Salonica Army.

6s. net.

The Diagnosis of Nervous Diseases.

By PURVES STEWART, C.B., M.A., M.D.Edin. F.R.C.P.,

Physician to the Westminster Hospital; Consulting Physician to H.M. Forces; Temporary Colonel A.M.S.

With 283 Illustrations from Original Diagrams and Clinical Photographs. 589 pages. Medium 8vo.

18s. net. NEW (FOURTH) EDITION, EXTENSIVELY REVISED.

New and Revised Edition of this well-known Text-book.

Surgical Nursing and the Principles of Surgery for Nurses

By RUSSELL HOWARD, M.B., M.S., F.R.C.S.,

Assistant Surgeon to the London Hospital, and Lecturer on Surgical Nursing to the Probationers of the London Hospital.

New Edition, thoroughly Revised and Fully Illustrated. xvi + 318 pp. **6s.**

London: EDWARD ARNOLD, 41 & 43, Maddox Street, Bond Street, W. 1.

JUST PUBLISHED.

The NEW SYSTEM of GYNÆCOLOGY

Edited by **THOMAS WATTS EDEN, M.D., F.R.C.S.E., F.R.C.P.**; and **CUTHBERT LOCKYER, M.D., B.S., F.R.C.S., F.R.C.P.**
 In Three Volumes. With numerous Illustrations in Colour and Black-and-White. Crown 4to. **25 6s. net.**

THE BRITISH MEDICAL JOURNAL:—"The New System of Gynæcology is highly creditable to British gynæcology. The printing, paper, and illustrations are admirable..... In general excellence we have no hesitation in stating that it is the best work on gynæcology published up to the present time."

MACMILLAN & CO., Ltd., London.

STAMMERING, CLEFT PALATE, SPEECH, and LISPING.

By Mrs. EMIL BEHNKE.

Price 1s. net, postage 1d., of Mrs. EMIL BEHNKE, 18, Earl's Court Square, S.W., who receives stammerers for treatment. References to Doctors whom Mrs. BEHNKE has cured, and others.

Dr. CHAUMIER'S CALF LYMPH

GLYCERINATED AND REINFORCED
THE CHEAPEST AND MOST ACTIVE LYMPH.

PREPARED UNDER THE

Most minute Antiseptic Precautions.

Supplied in Tubes, sufficient to vaccinate 1 or 2 persons at 5d. each; per dozen, by 12 tubes or more 4s. 6d. 10 persons at 3d. per tube; 25 persons at 1s. 3d. per tube. Collapsible tubes (40 vaccinations) 2s. 6d. each. Packing and postage 1d. in addition.

Agents for Great Britain:—

ROBERTS & CO.,

76, New Bond St., LONDON, W.

DON'T SELL YOUR VICTORY LOAN

Write at once to The Prudential Assurance Co., 142, Holborn Bars, E.C. 1, or to any of its Agents.

COVERS FOR BINDING Vols. I. & II. of the BRITISH MEDICAL JOURNAL for 1915 and 1916 can be had, price 2s.; by parcel post 2s. 4d. each. Remittances must accompany all orders. Apply at the office, 429, Strand, W.C.

TEST ALL SO-CALLED

DIABETIC FOODS

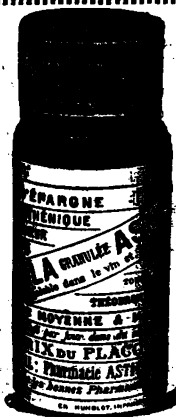
WITH IODINE SOLUTION BEFORE RECOMMENDATION

CALLARD'S DIABETIC FOODS

STAND THIS AND ALL OTHER TESTS.

SAMPLES FREE.

CALLARD & CO., Food Specialists to all the great Hospitals.
 74, REGENT STREET, LONDON, W.

**KOLA ASTIER**

GRANULATED.

Anti-neurasthenic, regularises the cardiac rhythm, stimulates the nervous system.

Medium Dose: Two teaspoonfuls a day.

ASTIER LABORATORIES:

45, Rue du Docteur Blanche, PARIS.

For Samples and Literature address:

WILCOX, JOZEAU & CO., 49, Haymarket, London, S.W.

Australasia—Messrs. Joubert & Joubert, 552, Flinders St., Melbourne.

Canada—Messrs. Rougier Bros., 63, Notre-Dame St. East, Montreal.

India—Messrs. Eugène Meiffre, P.O. Box 130, Bombay.

India—Messrs. Eugène Meiffre, 11, Ezra Street, Calcutta.

SALAMON'S ÆTHER AND CHLOROFORM

As exclusively used by the most eminent anaesthetists in the Kingdom. Anaesthetical and analytical reports on application to
SALAMON & CO., Ltd., Manufacturing Chemists, RAINHAM, ESSEX. Est. 1878.

**Aquaperia**

HARROGATE, ENGLAND.

The British Aperient Mineral Water

supplants Apenta, Hunyadi Janos, and other German and Austrian Waters.

Editorial Note from "Lancet," 20th March, 1915.

"The Water is drawn from a Spring at Harrogate. The constituents are well balanced in accordance with therapeutic requirements."

Sold by all Chemists and Drug Stores.

Bottled by **CAMWAL LTD.** at their Spring, HARROGATE, ENGLAND.

INSURANCE.

Medical men will find it to their advantage to apply for special terms of insurance which the MEDICAL INSURANCE AGENCY has arranged with THE GUARDIAN ASSURANCE CO., Ltd.:—

1. **WAR STOCK PURCHASE SCHEME** (to pay off Bankers' Loans already advanced to buy War Loan).
2. **WHOLE LIFE and ENDOWMENT Policies.**
3. **CHILDREN'S SAVINGS FUND and EDUCATIONAL Policies.**
4. **PARTNERSHIP LIFE Policies.**
5. **MOTOR CARS** (Comprehensive Policies, specially designed for Doctors' requirements).
6. **FIRE, BURGLARY, GLASS and FIDELITY Risks.**
7. **PERSONAL ACCIDENTS** (with or without diseases).
8. **COMBINED "HOUSEHOLD" Policies** (cover risks arising from Fire, Burglary, and liability for Accidents to Servants, under one Policy and one payment).
9. **WORKMEN'S COMPENSATION** (Accidents to Servants and other Employees).
10. **CONSEQUENTIAL FIRE LOSS.**
11. **THIRD PARTY** (Horse driving risks).

To The Agent and Secretary, Medical Insurance Agency, 429, Strand, London, W.C.

[Please send terms for Nos.

of above.]

Name _____

Address _____

The GUARDIAN ASSURANCE COMPANY, Ltd. (Estab. 1821.)

Subscribed Capital, £2,000,000. Paid up, £1,000,000. Total Assets, £7,267,000. Income, £1,412,000.

Antiseptic and Curative.

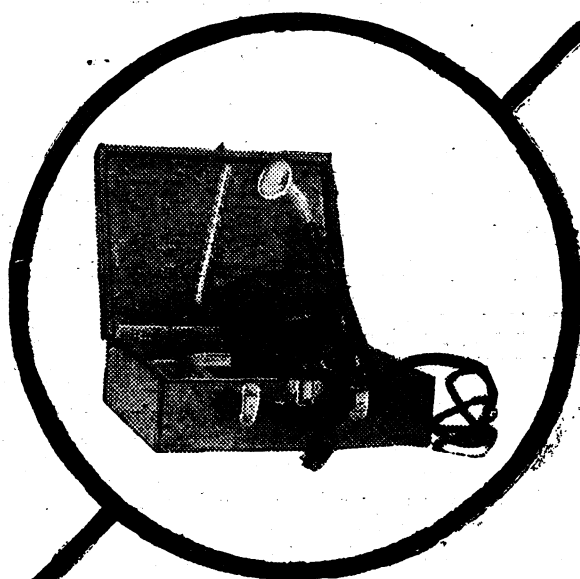
Sphagnol

SOAPS & OINTMENT

Doctors and Nurses engaged in war work at home and overseas are using Sphagnol as a preventative of Septic Poisoning, and recommend it as a reliable remedy for Trench Sores, Eczema, Gingivitis, and the many other forms of obscure skin diseases.

Send your professional card for a free sample set of Sphagnol Ointment and Soaps.

PEAT PRODUCTS (SPHAGNOL) Ltd. 18, Queenhitha, Upper Thames St., **LONDON, E.C. 4**



Invaluable to the
Medical Profession—
Dermatologists,
Electro-therapists,
Radiologists, &c.

A great aid in
Hospital and Ward
Work.
For Convalescent
and Nursing Homes.

Unequalled for Indolent
& Septic Wounds—Shell
Shock—Trench Foot and
other War Ailments.

THE STERLING PORTABLE - HIGH FREQUENCY - VIOLET RAY GENERATOR

Portable—Operated
from Lighting current—
Any voltage—Powerful—
Extremely simple.

**The Sterling Corporation
(Great Britain) Limited**

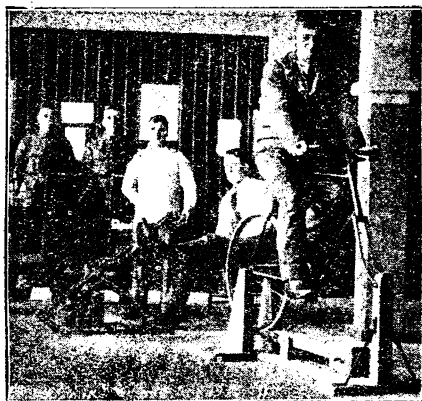
TELEPHONE—MAYFAIR 2471.
TELEGRAMS—TURBINISM, LONDON.

**Sixteen Wigmore Street,
London—West—One.**

Supplied to H.M. War
Office—New Zealand
and South African
Medical Services—
Military Hospitals.

Employed and
advocated by eminent
Physicians and
leading Electro-
therapists.

BLACKPOOL COMMAND DEPOT.
Our Machines in use.



TREATMENT OF WOUNDED SOLDIERS. Mechano Therapeutic Apparatus.

The LATEST DEVELOPMENT for STIFF JOINTS and WASTED MUSCLES.
SIMPLE. CHEAP. EFFECTIVE.

Send for Descriptive Catalogue and Price List.

Machine for CIRCUMDUCTION of SHOULDER, of ANKLE and of HIP. Cycle for
EXERCISE of LEGS. FOOT and WRIST DROPS, CREEPING BOARDS, etc., etc.

AS DESIGNED BY

Major TAIT MACKENZIE, Captain A. E. BARCLAY, and Dr. SEEUWEN.

See Lecture in BRITISH MEDICAL JOURNAL, August 12th, 1916.

Machines now being used with wonderful results in CONVALESCENT
CAMPS and HOSPITALS all over the Kingdom.

We are the Sole Makers:—

**S. MEGARITY & CO., Wellington Street West,
HR. BROUGHTON, MANCHESTER.**

"TYCOS" SPHYGMOMANOMETER (PATENTED)

For determining both the DIASTOLIC and SYSTOLIC Readings of
ARTERIAL BLOOD PRESSURE.

The simplest and most quickly adjusted instrument for determining
Arterial Blood Pressure. No leather cuff, hooks or buttons. Accuracy
and rapidity assured.

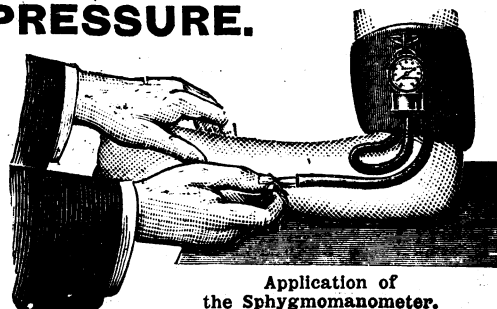
Sensitive but not delicate—soundly constructed, not easily deranged.

CAN BE CARRIED IN THE POCKET IN ANY POSITION, AND IS ALWAYS READY FOR USE.

Full particulars free on request. Instruments sent on approval
post free on receipt of card. Obtainable from all reputable dealers.

MANUFACTURED BY

SHORT & MASON, Ltd., Macdonald Rd., Walthamstow, London, N.E.



Application of
the Sphygmomanometer.

W. H. BAILEY & SON.

THE "UNGER" TRANSFUSION CANULA

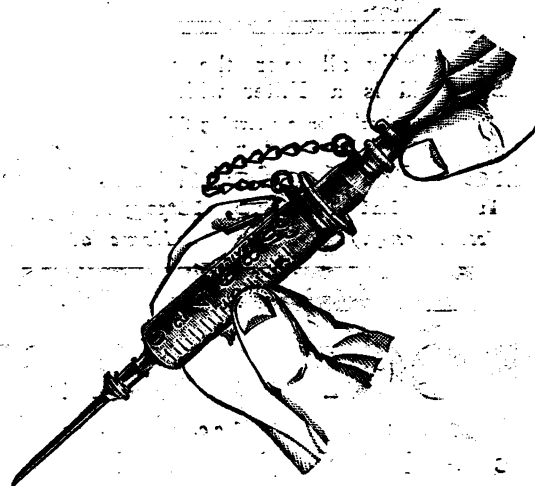
As made for MAJOR BRUCE ROBERTSON, C.A.M.C.



Price 8s. 6d. each.

See Article on "Transfusion of Whole Blood."

—Brit. Med. Journ., July 8th, 1916.



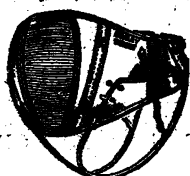
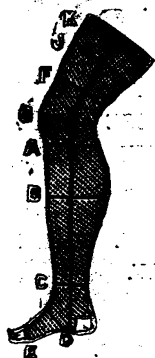
ALL GLASS SYRINGES

Complete 20 c.c. Size, 15/-

RECORD PATTERN do. 24/-

Best Quality Only.

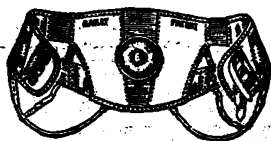
PATENT BELTS, TRUSSES, AND ELASTIC STOCKINGS.



Bailey's Patent Belts for General Support, Obesity, Umbilical Hernia, Prolapsus Uteri, Appendicectomy, Colotomy, &c., &c.

CHEAP BELTS FOR
HOSPITALS AT
CONTRACT PRICES.

Private Fitting Rooms on the Premises.



IMPORTANT NOTICE:

Messrs. W. H. BAILEY & SON are prepared to send (immediately on receipt of letter or telegram) thoroughly Competent Assistants, Male or Female, to attend patients at their homes and to take Doctor's instructions. They personally superintend the making and fitting of the Appliances throughout, thus ensuring the best possible results.

Price Lists and Forms for Measurement Free.

TRUSSES,
INGUINAL,
SCROTAL,
FEMORAL,
INDIARUBBER.



TRUSSES,
UMBILICAL
PROLAPSUS
MOC-MAIN
"XYLONITE"

"NO GOOD RESULTS CAN BE OBTAINED FROM ANY TRUSS WHILE THE DAILY BATH IS TAKEN WITHOUT ONE."

WRITE FOR LIST.

Surgical Instruments and Appliances
Hospital and Invalid Furniture

TELEGRAMS: "BAYLEAF, LONDON."

38, OXFORD STREET,
2, RATHBONE PLACE,

LONDON, W.

TELEPHONE: 2942 GERRARD.

Safety in Recommendation.

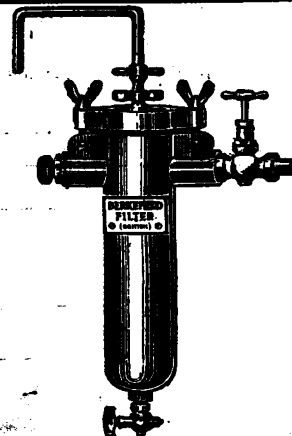
The medical man, asked to recommend a reliable filter, can with assurance suggest

The Berkefeld Filter

Used practically all over the world, under different climatic conditions, the Berkefeld is a Filter which always gives the greatest satisfaction.

All information concerning this British-owned and manufactured Filter, together with lists and prices may be secured on request to—

The Berkefeld Filter Co. (British),
Imperial House, Kingsway, London, W.C. 2.
(Wholesale only.) *Name of nearest retail agent on request.*



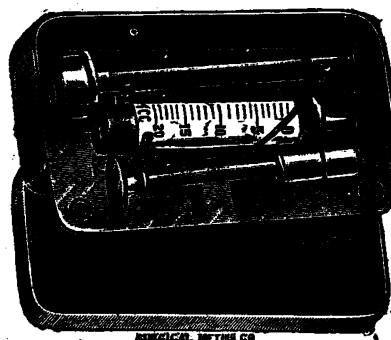
RECORD SYRINGES

20 m. 1 c.c. 5 c.c. 10 c.c. 20 c.c.
Prices . 10/6 12/6 15/- 18/- 23/-

Complete with 2 Needles in Case as illustrated.

NEW GENERAL CATALOGUE NOW READY—
free on application to the Profession and Hospitals, etc.

SURGICAL MANUFACTURING COMPANY,
Surgical Instrument Makers to the War Office, etc.
83-85, MORTIMER ST., LONDON, W.



BRITISH MAKE.

**The
SINGER
"10"**

AN IDEAL DOCTORS CAR.

A FEW OF THE FAMOUS **SINGER "10's"** ARE NOW AVAILABLE FOR IMMEDIATE DELIVERY TO THOSE ABLE TO OBTAIN PERMITS FROM THE MINISTRY OF MUNITIONS.

PRECEDENCE IS USUALLY GIVEN TO DOCTORS.

IF WOULD-BE PURCHASERS SO DESIRE WE WILL MAKE THE NECESSARY APPLICATION ON THEIR BEHALF.

Write to-day for full particulars—

LONDON DEPOT:
17 HOLBORN VIADUCT, E.C.

SINGER & CO. LTD.
COVENTRY.

WATSON'S HÆMACYTOMETERS

BRITISH MADE.

Thoma Rulings, with two Pipettes. Price £1 : 12 : 6.

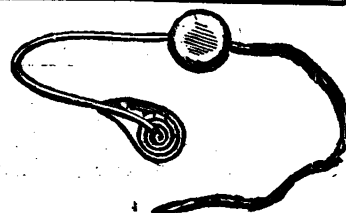
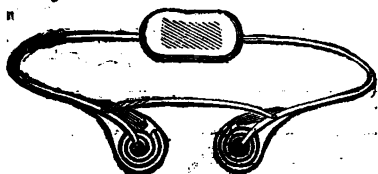
GUARANTEED ACCURATE.

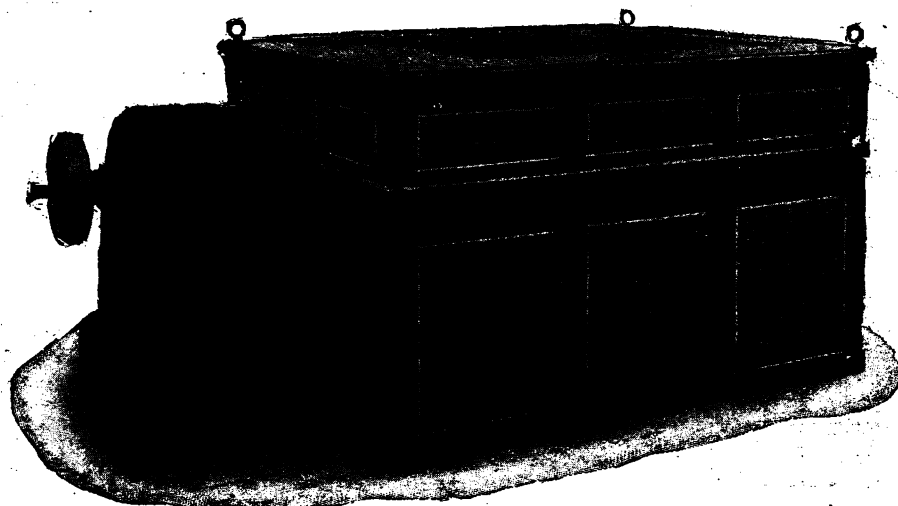
W. WATSON & SONS, LTD., 313, High Holborn, London, W.C. 1.

The latest Improvement in Trusses.

WM. COLES & CO.,
TRUSS SPECIALISTS. INVENTORS OF
THE SPIRAL SPRING TRUSS.
5, SACKVILLE STREET, PICCADILLY, W.

(Removed from 225, PICCADILLY.) *Particulars by Post.*
TELEPHONE—2846 Mayfair.





VACCINE REFRIGERATORS

We have a few A-S Refrigerating Machines ready for early delivery against Class A Certificate. These (French) machines are admirably adapted for Vaccine Refrigerators and to General and Field Hospital use. As used by the Indian Government, the Bland-Sutton Institute, etc.

BROWN, BOVERI & CO., Ltd., Caxton House Westminster, S.W.1.

The
NORWICH

GREPE + BANDAGE

SUPERIOR ENGLISH MANUFACTURE
Extremely elastic, but contains no rubber.
FAST WOVEN EDGES.



"The stairs never worry me when I've got my Norwich Crêpe Bandage."

**THE BANDAGE THAT
CAN BE STERILIZED.**

**IMPORTANT
THE EDGES WILL NOT
FRAY OUT NOR RAVEL.**

Invaluable for all binding purposes. Entirely displaces bandages of rubber and elastic web. Considerably more durable, although less than one-third the cost of rubber or elastic web.

WOOL v. COTTON Sterilized Bandages.

Patients having varicose veins and other ailments requiring the use of bandages usually suffer from cold extremities due to bad circulation. They require *warmth* as well as support. The Norwich Crêpe Bandages, containing wool, provide this warmth and do not absorb grease so readily as those made of cotton. Moreover, they may be thoroughly cleansed by the use of *hot* (not boiling) soapy water, with the addition of a little ammonia or soda. The bandages are healthy and comfortable to wear, giving the necessary firmness, yet yielding to every movement. Self-clinging and self-adjusting.

The Norwich Crêpe Bandage is supplied only through the leading wholesale houses, neatly wrapped in labelled packages. Its inexpensiveness, compared with foreign productions, and its high quality, universally commended by the medical and nursing professions, make it ideal for sufferers from varicose veins and for all purposes where bandages are required. Send for prices and samples to the sole manufacturers:

THE NORWICH CRAPE CO. (1856) LTD.,

St. Augustine's Silk Mills, Norwich, Eng.

London buyers can obtain samples and prices from Mr. T. Eastaway, London representative, 1, Wool Exchange, E.C. 2

Provincial Selling Agents:—Messrs. FREESE & MOON,
100, Bermondsey Street, London, S.E. 1.



THE NEW PATENT "PHONOPHORE" STETHOSCOPES

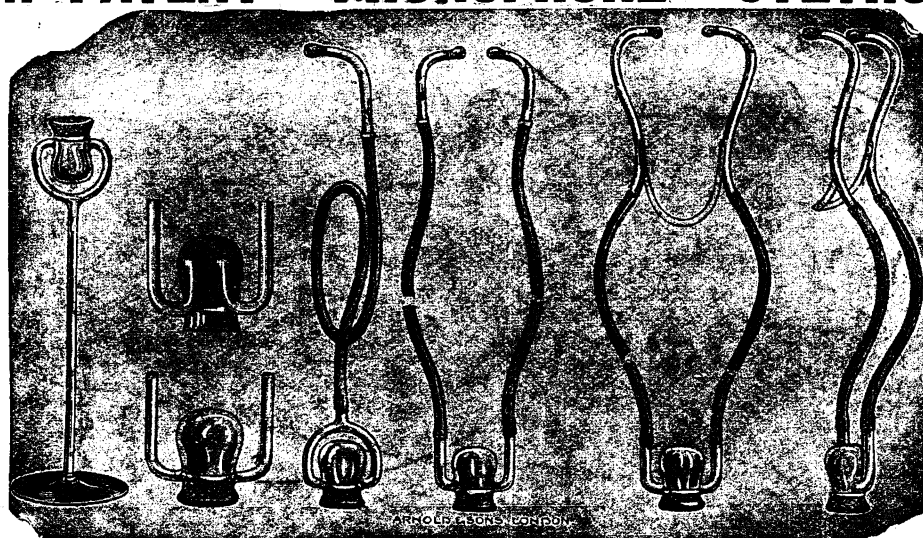


Fig. A.	Fig. B.	Fig. C.	Fig. D.	Fig. E.	Fig. F.
The New Patent "Phonophore" Stethoscope	Chest piece (Fig. B.)	Single flexible (Fig. C.)	The New Patent "Phonophore" Stethoscope, Double flexible (Fig. D.)	Binaural (Fig. E.)	ditto folding (Fig. F.)
13/6	7/6	9/9	13/6	16/6	17/6

COPIES OF UNSOLICITED TESTIMONIALS.

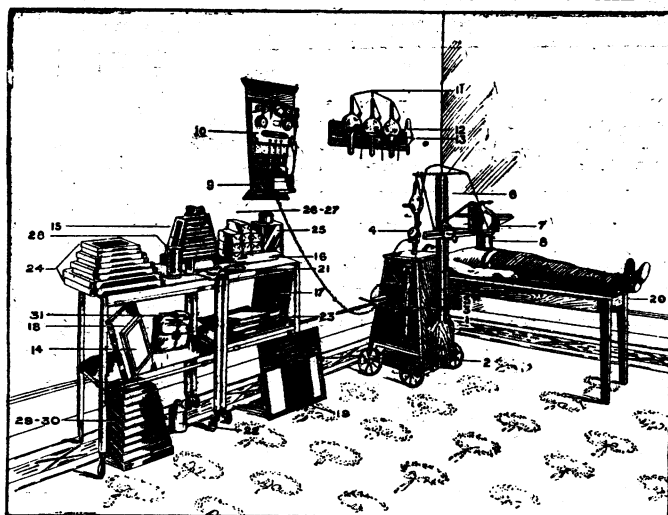
DEAR SIR,—"I find that most certainly the chest sounds are rendered clearer and more distinct by your "Phonophore" than by any stethoscope I have used during over 30 years' work."—Yours, F.R.C.S.

DEAR SIR,—"I have found your "Phonophore" by far the best stethoscope I have ever used."—Faithfully Yours.

Extract from the "British Medical Journal," Oct. 28th, 1911.—"Some years ago Messrs. Arnold & Sons, of Giltspur Street, E.C., brought out a Stethoscope which they named the 'Phonophore.' Its construction secured a considerably increased volume of sound, and the appliance gained favour among those satisfied on general grounds with ordinary stethoscopes, or whose needs, owing to some lack of aural acuity, were not adequately met thereby. Of this appliance the same firm has recently brought out a modification in which the bell-like attachment, constituting the chest-piece is provided with two sound tubes instead of one. These tubes are continued upwards, the sound thus being conveyed to each ear direct from the collecting chamber. Each ear, therefore, receives the same amount of sound, although the same amount of sound may not be perceived if there is any difference in the hearing power of the two ears. The gross volume of sound is also greater than supplied even by the original 'Phonophore.' This modification of the 'Phonophore' is worth examination by anyone interested in stethoscopy."

ARNOLD & SONS, SURGICAL INSTRUMENT MANUFACTURERS, Giltspur Street, London, E.C.
(J. E. ARNOLD. E. R. ARNOLD.)
Telegraphic Address: "Instruments, London." Telephone No. 5240 City (3 Lines).

THE HOUSE FOR EVERYTHING ELECTRO-MEDICAL



THE "KOMPACT" X-RAY INSTALLATION, No. 11, comprises:—

- 12-in. Spark Intensified Transformer
- Condenser
- Spintrometer
- Milliamperemeter
- Oak Carrying Case
- X-Ray Tube Stand
- Protective X-Ray Tube Shield
- Compressor Cylinder
- "Triumph" Mercury Interrupter
- Switchboard and Rheostat
- Two X-Ray Tubes
- One Valve Tube
- Safety X-Ray Tube Rack
- Fluorescent Screen with protective lead glass front
- Collapsible Fluoroscope
- Slide Rule for calculating exposures
- Intensifying Screen
- Intensifying Screen Cassette
- Special Negative Viewer, to take any size negative
- X-Ray Couch
- Pair of Protective X-Ray Gloves
- 4 lbs. Mercury
- Eight various size Developing Dishes
- Eight various size Printing Frames
- Dark Room Lamp
- Ten Bottles Toning and Fixing Solution
- 1 doz. Packets Tabloid Developer
- Two Measure Glasses
- 1 gross assorted X-Ray Plates, Best, up to 15 by 12
- 24 Packets of Printing-out Paper, Full Set of Connecting Cords, heavily insulated.
- 12 lbs. Hyposulphite of Soda.

"KOMPACT"

X-RAY INSTALLATION

No. 11. Patented and Registered,
BRITISH MADE.

As supplied to—

The British War Office The Crown Agents for the Colonies
The Imperial Russian Government The British Red Cross Society
And auxiliary Hospital Organisations throughout
England, France, Egypt and Russia.

PRICE (Complete as Illustrated and Detailed below), **£130**

For Voltages from 50 to 250 Direct Current.
Can also be supplied to work on Alternating Current.

PLEASE SEND FOR DESCRIPTIVE CATALOGUE.

'Phone: 1570 HOLBORN.

The Medical Supply Association,

(E. B. GREVILLE, M.B., C.M., Proprietor),

Actual Manufacturers of X-Ray Apparatus,

107-185, Gray's Inn Road, London, W.C.



NOTE.

The extraordinary discharge through 12-in. of air space obtained with our

"KOMPACT" OUTFIT, No. 11.

Founded
1834.

HUMPHREYS'

25 Gold and
Silver Medals.

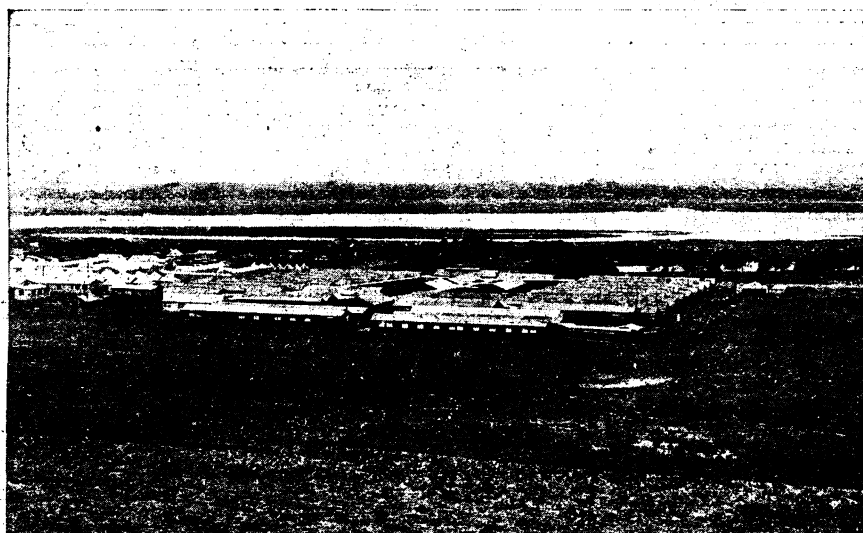
Mobile Hospital Buildings and the New Patent Brickwork System of Construction for Munition Factories and Dock Sheds.

HOSPITALS

FOR

5,000

BEDS



ERECTED

"SOMEWHERE

IN FRANCE"

AND

"ELSEWHERE"

THE ABOVE COMPLETE "HUTTED" HOSPITAL FOR 540 BEDS ERECTED IN FRANCE.

SAILORS' AND SOLDIERS' MOBILE PANEL HUTS AND HOSPITAL WARDS

as supplied from Stock to the

**British Government Departments,
The British Red Cross Society, and
Order of St. John of Jerusalem,
Etc., Etc., Etc.**

Buildings shipped complete from our Works on the
Thames. Standard Sizes, stocked in Sectional Panels,
simple in construction, to erect abroad by ordinary labour.

For full particulars, Specifications and Estimates, apply to—

HUMPHREYS Ltd., KNIGHTSBRIDGE, LONDON, S.W. 7

(CONTRACTORS TO THE ADMIRALTY, WAR OFFICE, AUSTRALIAN & CANADIAN GOVERNMENTS.)

TELEPHONE: 6447 KENSINGTON (3 LINES).

TELEGRAMS: HUMPHREYS, KNIGHTSBRIDGE, LONDON.

TRADE MARK

THE MOST ECONOMICAL INFANTS' FOOD.

FRAME FOOD

Obtainable from all Chemists and Stores.

FULL SAMPLE SENT TO DOCTORS.

FRAME FOOD CO., Standen Road, Southfields, London.

GOLD MEDAL International Congress of Medicine, London, 1913.

MIST. DAMIANÆ CO. (HEWLETT'S.)

MIST. DAMIANÆ CO. (Hewlett's) will be found to possess all the properties of *Damiana*, viz:—Its alternative effects on the alimentary canal and tonic action upon the brain and nervous system generally.

In all the various forms of loss of nerve power MIST. DAMIANÆ CO. (Hewlett's) is a powerful remedy, relieving the exhaustion and conferring renewed capacity for mental and physical endurance.

As a nerve tonic and brain stimulant it is unequalled, and its invigorating properties will be found invaluable in many diseases where there is great depression and exhaustion. In paraplegia, hemiplegia, and partial paralysis, it is particularly indicated, and may be suitably and satisfactorily employed wherever a powerful nerve stimulant and restorative are required.

Dose—One or Two Drachms in Water.

MEDICAL OPINIONS.

"I have tried your Mist. Damianæ Co. considerably in the dyspepsia of consumptive phthisis, and can very strongly recommend its use in those cases. It soothes the stomach wonderfully, and enables the patient to take more food whilst acting as a powerful stimulant in relieving exhaustion."—Yours faithfully, W. H. B., B.A. (Cantab.), M.R.C.S., L.S.A.

THE MEDICAL ANNUAL.—"*Damianæ* is not used so frequently in this country as in America, where its value as a tonic for Neurasthenia is well-known. Messrs. Hewlett & Son put up a very excellent preparation of this drug combined with *Nux Vomica* and simple aromatics and bitters, which is valuable for dispensing, and yields very satisfactory results in treatment."—1898.

Dr. M., R.N., writes:—"I have frequently prescribed your Mist. Damianæ Co., and proved it efficient in treating Neurasthenia."

PRICE, 11/- per lb. Packed in 10-oz., 22-oz., 40-oz., and 90-oz. Bottles.

Introduced and Prepared only by—**C. J. HEWLETT & SON, Ltd., 35 to 42, Charlotte St., LONDON, E.C.**

Glycolactophos

THIS preparation being British, inability to obtain supplies need not be anticipated.

FORMULA.—Casein 95%, Glycerophosphate of Sodium 2½%, Glycerophosphate of Calcium, 2½%.

Its use is indicated in the treatment of Neurasthenia, *Tabes Dorsalis*, Neuralgia, Nervous conditions in which an excess of phosphates are excreted in the urine, Phthisis, Chronic Dyspepsia, Anæmia, Insomnia, and wasting diseases generally.

The presence of the Calcium salt gives it a high therapeutic value in the treatment of Rickets.

SAMPLES AND PARTICULARS SENT FREE TO THE MEDICAL PROFESSION ON REQUEST.

CLAY, PAGET & CO., LTD., 71, Ebury Street, Eaton Square, London, S.W.

Telegraphic Address—"Lactoso, London." Telephone—Victoria 5043 (2 Lines).

EMETINE.

Hydrochlorid (WHIFFEN'S) Hydrobromid,

FOR HYPODERMIC INJECTION.

ALSO EMETINE—BISMUTH—IODIDE

FOR ORAL ADMINISTRATION.

"Fortunately we now possess in EMETINE—BISMUTH—IODIDE a drug which sterilizes chronic cyst carriers with a certainty not attained by any previous method."—*Vide* Dr. GEORGE LOW, M.A., M.D., in the *Medical Review*, February, 1917, page 56.

"Emetine is specific in Amoebic Dysentery."—E. R. WHITMORE, *New York Medical Journal*.

May be obtained by ordering Whiffen's Brand, from all Chemists and Wholesale Drug Houses in the United Kingdom and Abroad, or direct from—

WHIFFEN & SONS, Ltd., Battersea, London, S.W.

Telephone: 254 and 255 Battersea. PAMPHLET ON APPLICATION.

A Wonderful Collection of Babies.



Under the auspices of a PUBLIC AUTHORITY, every one of the Babies shown in this photograph was brought up on cow's milk diluted with BARLEY WATER made from

ROBINSON'S "Patent" BARLEY.

The cheapest, best, and most natural food for hand-fed babies.

Send for Free Literature: Dept. B.M.J. KEEN, ROBINSON & CO., LTD., LONDON.

FELLOWS' SYRUP

Differs from other preparations of the Hypophosphites. Leading Clinicians in all parts of the world have long recognized this important fact. HAVE YOU?

To Insure Results,
PRESCRIBE THE GENUINE

R. Syr. Hypophos. Comp. FELLOWS'

REJECT < Cheap and Inefficient Substitutes
Preparations "Just as Good"

First Class Award for
Liquors and Liquid
Extracts and Pharma-
ceutical Preparations
International Medical
Exhibition, London, '81.

BATTLE'S LIQUORS

First Class Award at
World's Industrial
Exposition,
New Orleans, 1885,
Bronze Medal,
St. Louis, 1904.

The following preparations have for many years been used and prescribed by medical men; they are therefore thoroughly recommended both on account of their high therapeutical properties and their great purity as galenical preparations.

Liquor Opii Sedativus (Battley)

Dose: 5 to 15 minims.

The Oldest and still the Best Hypnotic and Sedative.

Twice the strength of Tinctura Opii B.P.

Safe in use. No disagreeable after-effects.

Composition always reliable.

Liquor Cinchonæ Cord. (Battley)

Dose: 2 to 15 minims.

The most reliable preparation of Cinchona Bark.

Contains all the active principles of Yellow Bark.

Will remain unaltered for a great length of time, being free from starch, etc.

Liquor Cinch. Pallidæ (Battley)

Dose: 2 to 15 minims.

A well-known and useful preparation in Malarial Diseases and in Convalescence after Illness.

Does not disturb the stomach.

Liquor Secalis Cornuti (Battley)

Dose: 20 to 60 minims.

Pre-eminent among Ergotic Preparations for Purity and Strength, and has proved to be unrivalled in the following therapeutical actions:

As an Emmenagogue and Ecbolic, in Post Partum Hæmorrhage, as a Hæmostatic, etc.

Battley's Liquors are issued in 2 oz., 4 oz., 8 oz. and 1 lb. bottles.

They are prepared according to the original process of the late Richard Battley.

Telegraphic Address: "Sedative, London."

Sole Manufacturers:

Telephone: Central 2483.

BATTLE & WATTS, 18 Wellclose Square, LONDON, E.

ENTERO-COLITIS

ESPECIALLY IN CHILDREN

is promptly relieved and the road to recovery is made safe and comfortable by the application of hot Antiphlogistine over the entire abdominal wall.

ANTIPHLOGISTINE

produces a depletion of the enteric and peritoneal vessels and stimulates the solar and hypogastric plexuses, relieves the tenesmus, the muscular rigidity and the pain.

ATHLETIC CONTUSIONS

Sprains—Strains—Spike Wounds—Traumatic Synovitis—Myalgia and other congestions due to outdoor activities, yield promptly to the application of hot

Antiphlogistine

TRADE MARK.

THE DENVER CHEMICAL MFG. CO., BOW, LONDON, E. 3.

"HALAZONE"

FOR THE DISINFECTION OF DRINKING WATER.

BOOT'S PURE DRUG Co. Limited beg to announce that they are in a position to supply immediately tablets of "Halazone" (p-sulphondichloraminobenzoic acid), Dakin's new water disinfectant. (*Vide B.M.J., May 26th, 1917.*) The action of "Halazone" is positive, and may be relied upon for the crudest of waters. Each tablet is sufficient to sterilize one quart of contaminated water, but in cases of extreme contamination a second tablet may be necessary.

"HALAZONE" IS INVALUABLE
FOR THOSE ON ACTIVE SERVICE.

Sold in bottles of 100 tablets, price 6d.; Post free from Nottingham, 7½d.

AN IDEAL ANTISEPTIC

OF WIDE APPLICABILITY IN THE
TREATMENT OF INFECTED WOUNDS
AND IN SURGICAL PRACTICE.

CHLORAMINE-T

(p-toluene-sodium-sulphochloramide).

Introduced by Dr. H. D. Dakin and his colleagues of the Leeds University.

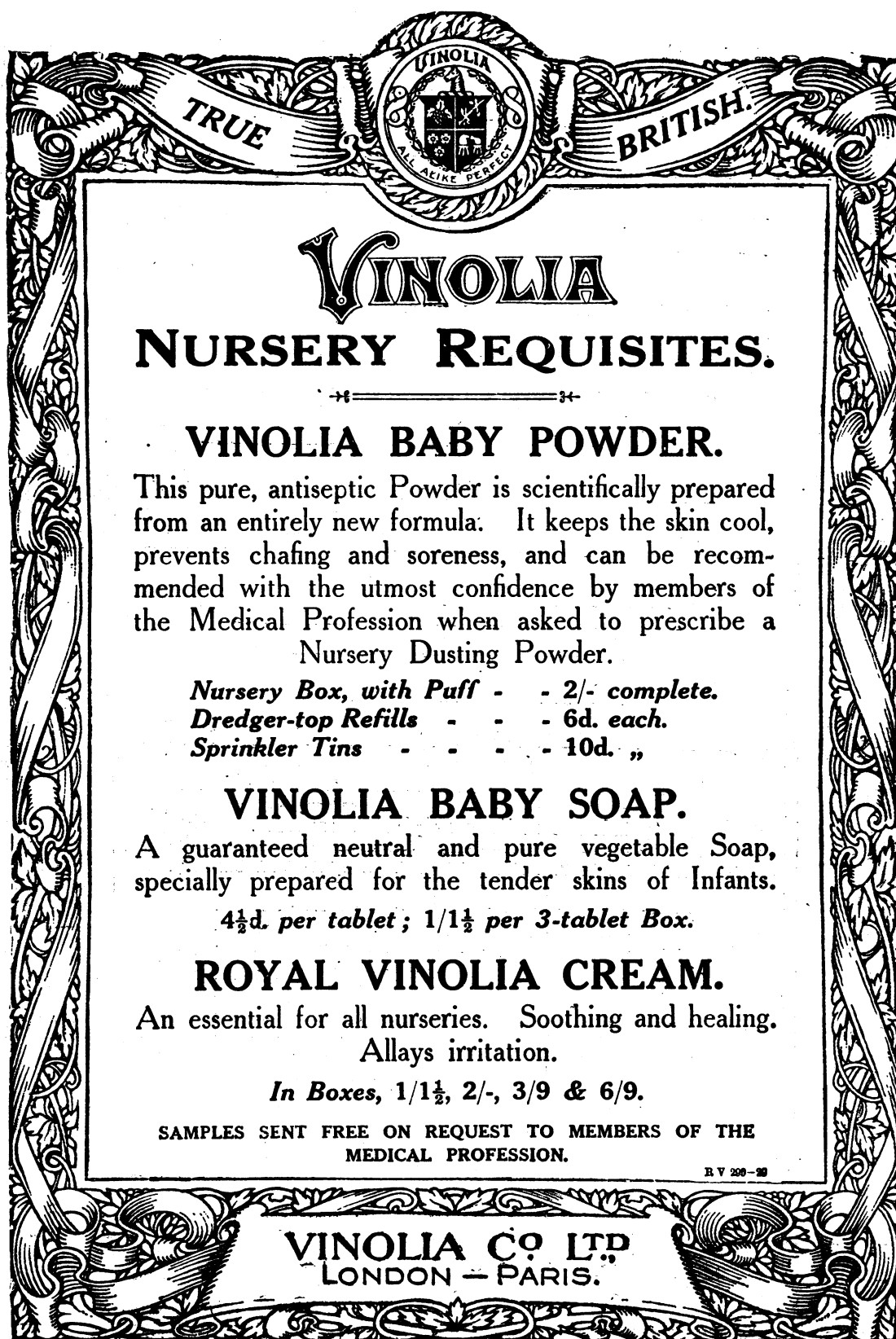
THE use of Hypochlorite antiseptics marks a new era in treatment. The new product—CHLORAMINE-T, is a great advance on the solutions containing Hypochlorous Acid which are now so widely used. It is practically non-toxic, does not coagulate blood serum, and is stable both in powder and solution. It may be employed not only for the treatment of wounds, but also as a mouth wash, nasal or vaginal douche, and for urethral irrigation.


Supplied in Powder in 1oz. bottles, 1/2; 4oz. 3/6; 1lb. 12/6; also in Tablets—8.75 grns.—bottles of 25, 1/4; 50, 2/6; 100, 4/6. Tablets, 43.75—bottles of 12, 2/8, for making solutions of known strength. All post free.


BOOTS PURE DRUG Co. Limited,
THE LABORATORIES, ————— NOTTINGHAM.

JESSE BOOT, Managing Director.

Boots Pure Drug Co. Limited.







VINOLIA

NURSERY REQUISITES.

VINOLIA BABY POWDER.

This pure, antiseptic Powder is scientifically prepared from an entirely new formula. It keeps the skin cool, prevents chafing and soreness, and can be recommended with the utmost confidence by members of the Medical Profession when asked to prescribe a Nursery Dusting Powder.

Nursery Box, with Puff - - 2/- complete.
Dredger-top Refills - - - 6d. each.
Sprinkler Tins - - - - 10d. „

VINOLIA BABY SOAP.

A guaranteed neutral and pure vegetable Soap, specially prepared for the tender skins of Infants.

4½d. per tablet ; 1/1½ per 3-tablet Box.

ROYAL VINOLIA CREAM.

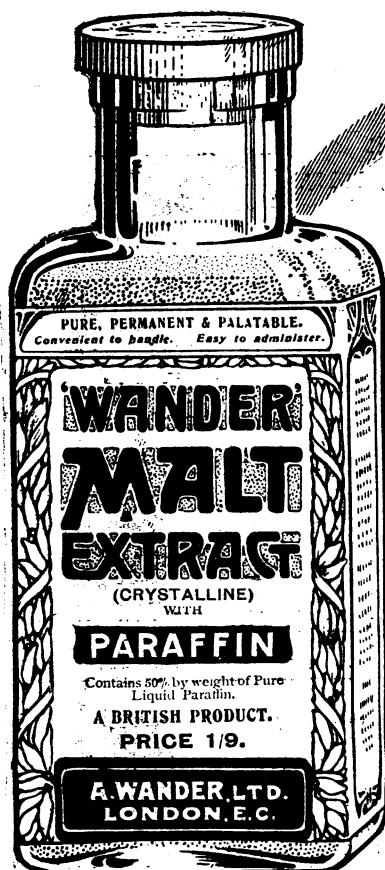
An essential for all nurseries. Soothing and healing.
Allays irritation.

In Boxes, 1/1½, 2/-, 3/9 & 6/9.

SAMPLES SENT FREE ON REQUEST TO MEMBERS OF THE
MEDICAL PROFESSION.

B V 200-20

VINOLIA CO LTD
 LONDON - PARIS.



A NEW, IMPROVED
AND ENTIRELY SATISFACTORY
METHOD OF ADMINISTERING LIQUID
PARAFFIN, ELIMINATING THE DISADVANTAGES
OF THE UNCOMBINED OIL AND ADDING TO THE
EFFICACY OF THE TREATMENT. OF PROVED
VALUE IN

**Constipation,
Haemorrhoids,
Malnutrition,**
AND ASSOCIATED CONDITIONS.

OF SPECIAL VALUE FOR
INFANTS, CHILDREN & INVALIDS.
CONTAINING 50 PER CENT. OF PURE LIQUID PARAFFIN
OF HIGH VISCOSITY AND PRESENTED IN DRY FORM.

'Wander' Malt Extract with Paraffin.

EXTREMELY PLEASANT TO TASTE, IT MIXES FREELY WITH MILK OR WATER
WITHOUT SEPARATION OF THE OIL. THE HIGHLY NUTRIENT, DIGESTIVE
AND MILK-MODIFYING PROPERTIES OF THE "WANDER" MALT EXTRACT ARE
RETAINED UNIMPAIRED, THUS MAKING THE PREPARATION A VALUABLE
ADDITION TO INFANT FEEDS.

IT MIXES THOROUGHLY WITH THE INTESTINAL CONTENT, PRE-
VENTING FORMATION OF SCYBALA, AND DOES NOT CAUSE OVER
LUBRICATION.

Rx 'Wander' Ext. Malti c̄ Paraffin.

We invite members of the Medical Profession to write
for Clinical Trial Specimen.

A. WANDER Ltd.,
45, COWCROSS ST., LONDON, E.C. 1.
WORKS: KING'S LANGLEY.

ALL REACTIONS of the body fluids and tissues are COLLOIDAL.

Before a drug can exert its full therapeutic action it is necessary for it to become converted into the colloidal state (Dr. ———, in the BRITISH MEDICAL JOURNAL, 19th May, 1917).

CROOKES'

COLLOSOLS are
Drugs in the
Colloid State.



COLLOSOLS are
isotonic and
isomorphous with
the elements of the
body.

COLLOSOL IODINE is superior to organic Iodine Compounds and Iodides. It is directly assimilated into the blood stream and is wholly absorbed. It never causes Iodism.

COLLOSOL IODINE AQUEOUS (1-500). Specially indicated for internal administration, and for prior intravenous injection in SYPHILIS. In CANCER the intravenous injection of Collosol Iodine relieves pain even where large dosage of morphine is ineffective.

COLLOSOL IODINE OIL and OINTMENT (3%). Specially indicated for parasitic affections—also for TRENCH FOOT. The Iodine particles penetrate the pores of the skin without staining the epidermis, which is kept supple.

COLLOSOL IODINE PASTA. Prepared in glyco-gelatin base forms a colloidal antiseptic skin, when heated and applied to the part affected. Is indicated in WOUNDS, BURNS, and SORES.

COLLOSOL SULPHUR for internal
administration and

COLLOSOL SULPHUR BATHS

Have the
highest medical
recommendation

in all forms of RHEUMATISM and other fibrositic conditions. They are also specific in SKIN affections.

COLLOSOLS are prepared for the Proprietors, Crooke's Collosols Ltd., at

THE CROOKES' LABORATORIES,

50, Elgin Crescent, LONDON, W. 11.

COMBATS SERIES, 149a—KOREAN

**SUPPLIES ARE
AVAILABLE**TRADE
MARK**'TABLOID'** BRAND**HALAZONE**

The new disinfectant for drinking water

A recent report to the Medical Research Committee (*B.M.J.*, May 26, 1917, pages 682-684), indicates the value of HALAZONE (*p*-Sulphondichloroaminobenzoic Acid) for the sterilisation of polluted drinking water.

Being portable and permanent, 'TABLOID' HALAZONE
is especially serviceable in the field.

Each bottle contains sufficient to render from 12½ to 25 gallons of polluted water fit and safe for drinking purposes. Each product is sufficient normally to purify one quart of water.

'TABLOID' HALAZONE, 0.004 gramme

Supplied to the Medical Profession, in bottles of 100, at 8d. each



Archers and swordsmen of the escort accompanying the Korean envoy to Japan. Although the short Tartar bow of horn and sinew continued in use in Korea until very recent times, the weapon here carried appears to be the Japanese bow of bamboo and oak. Behind the warriors come porters carrying chests containing the treaty documents, or perhaps some of the less heavy material offered as tribute. Date, A.D. 1711.



**BURROUGHS
WELLCOME & Co.
LONDON**

NEW YORK MONTREAL
SYDNEY CAPE TOWN
MILAN SHANGHAI
BUENOS AIRES BOMBAY

*All communications intended
for the Head Office should be
addressed to*

**SNOW HILL BUILDINGS,
LONDON, E.C. 1**

*London Exhibition Room:
54, Wigmore Street, W.*

COPYRIGHT

Prescribed by the Medical Profession for 35 years.

The BRITISH MEDICAL JOURNAL says:

"Benger's Food has, by its excellence, established a reputation of its own."

It speaks volumes for Benger's Food that after 30 years, it is a food increasingly prescribed both in hospital and private practice.

The following Opinions of Medical Men are of great professional interest.

For Infants and Invalids.

"Ever since you introduced your Food, I have been in the habit of prescribing it for Infants and Invalids, and in my opinion, it surpasses and absolutely supersedes all other foods."

M.B., B.S., Lond., F.R.C.S. Eng.

For Diseases of Children.

"I am a Specialist in Diseases in Children and am using Benger's Food extensively in my practice."

M.D., M.R.C.S., F.R.C.S.

For Nursing Mothers.

"Invaluable for nursing mothers, especially for taking during the night when an easily assimilated food is required."

M.D., L.R.C.P., L.R.C.S. Ed., L.F.P.S. Glas.

Old Age.

"My oldest patient, a gentleman of 95, refers to your Food as 'dear old Benger.' He has taken it for years; it always suits him, and he never tires of it. He has just recovered from a severe attack of pneumonia, and to show the stuff he is made of, he reads without glasses, still goes for walks, has been married three times, and has 50 grandchildren. I cannot refrain from sending you this unsolicited testimonial."

M.D., C.M., M.R.C.S., &c.

Dyspepsia.

"I cannot give your Food a better testimonial than to say that I am dyspeptic myself. I find it extremely useful and always palatable."

F.R.C.S.

For Diarrhoea.

"I have found it specially beneficial in checking incipient diarrhoea as well as for feeding up babies and keeping them in condition."

F.R.C.S.



for INFANTS, INVALIDS,
AND THE AGED,

is sold throughout the World by Chemists, &c., in sealed tins;
price 1/-, 1/6, 2/6, 5/- and 10/-.

A physician's sample, with full particulars, will be sent post free on application to any member of the medical profession.

BENGER'S FOOD Ltd., — Otter Works, MANCHESTER, Eng.

Branch Offices

NEW YORK (U.S.A.) 92, WILLIAM STREET. — SYDNEY (N.S.W.) 117, PITT STREET.
Canadian Agents — National Drug & Chemical Co., Ltd., 34, St. Gabriel Street, MONTREAL and depôts throughout Canada.

N.B.—BENGER'S FOOD is the direct outcome of the pioneer work on digestive ferments, by the late Sir William Roberts, M.D., F.R.S., and the late Mr. F. Baden Benger, F.I.C., F.C.S., in 1880, since when it has been the premier dietetic preparation of its kind in the British Empire.

Bynogen

Trade Mark

Brings Health



The Improved Casein-Glycerophosphate Food

Recommended in all Enfeebled Conditions,
Mental and Nervous Exhaustion, Insomnia,
Convalescence after Illness, etc.

"Bynogen" is a highly concentrated food of acknowledged value. It is specially rich in phosphorus, which is present in the condition in which it is found in brain substance and other nervous tissues.

Formula :

Pure, Soluble Milk Protein	75 per cent.	Sodium Glycerophosphate	2 per cent.
Dextrin-Maltose (specially prepared)	20 "	Calcium Glycerophosphate	2 "
		Magnesium Glycerophosphate	1 per cent.

Advantages :

Physical

Possesses a most attractive flavour and aroma, mixes readily with milk, water, and other fluids. May be eaten dry, if desired, or sprinkled on articles of solid food. Keeps good indefinitely.

Therapeutic

The percentage of Nitrogen is high. The Carbohydrate is in the most easily assimilable form. The mixed Glycerophosphates present the inorganic bases common in food-stuffs and do not cause constipation.

Medical Men are invited to write for samples of this unique Nutrient and Nerve Restorative.

Obtainable from all Pharmacists, in bottles with cartons at 1/9 and 3/- each.

Sole Manufacturers:

Allen & Hanburys Ltd., Lombard Street, London, E.C.

West End House: 7 Vere Street, W.



Advances in Treatment

Intramuscular Injections in Syphilis

The most convenient and accurate method of administering intramuscular injections is by means of the "Hyposol" Ampoule-Syringe, which contains the dose of semi-fluid cream in the barrel and by a simple adaptation is made ready for use. Special intramuscular needles are supplied with the doses.



"Hyposol" Ampoule-Syringe charged with Salvarsan Cream ready for use.

"Hyposol" Salvarsan, doses of 0.1, 0.2, 0.3, 0.4, 0.5 or 0.6
Trade Mark

"Hyposol" Novarsenobenzol, doses of 0.15, 0.3, 0.45, 0.6, 0.75 or 0.9.
Trade Mark

"Hyposol" Mercurial Cream, 1 grain of Mercury in each.
Trade Mark

"Hyposol" Calomel, doses of $\frac{1}{6}$, $\frac{1}{4}$, $\frac{1}{2}$, $\frac{3}{4}$ or 1 grain.
Trade Mark

A booklet entitled "Hypodermic Medication," with a list of solutions supplied in "Hyposol" and "Azoule" form, will be sent post free on application.

Allen & Hanburys Ltd., London.

City House: 37 Lombard St., E.C.3. West End House: 7 Vere St., Cavendish Sq., W.1.



Byno Cascada

(Trade Marks)

**The Ideal Tonic Laxative
and Nutrient Digestive.**

"BYNO CASCADA" presents the stimulating tonic laxative principles of the finest Cascara Sagrada and Rhamnus Frangula incorporated in "Bynin" pure active liquid malt.

The gentle, yet persistent, tonic effect of Cascara on the intestinal muscle, reinforced by the influence of "Bynin," in promoting the digestion and assimilation of food, renders "Byno Cascada" the ideal prescription to ensure normal bowel activity.

Equally valuable in childhood, in pregnancy, for nursing mothers, and in old age, "Byno Cascada" is preferred in scientific treatment.

Issued in Bottles at
3/- and 5/6.

Descriptive Pamphlet and Sample Free to Medical Men.

Allen & Hanburys Ltd.,

LOMBARD STREET, LONDON.

Niagara Falls, N.Y. Toronto. Buenos Aires. Durban. Sydney.

THE COMBINED TREATMENT OF SYPHILIS.

SUPSALVS

STABLE SUPPOSITORIES OF "606" (OF FRENCH MANUFACTURE)

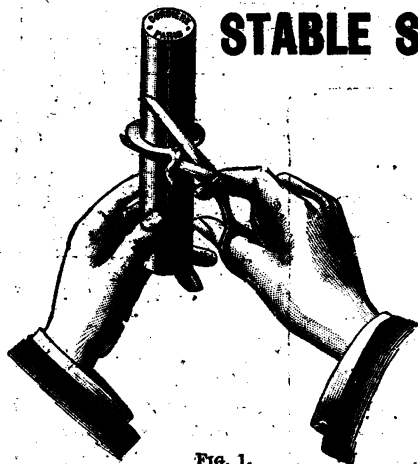


FIG. 1.

Fig. 1 represents the special patent metallic envelope containing a Supsalv for hot climates. The projecting edge in the middle is cut by scissors—the two ends are then easily pulled apart. The envelope should first be immersed in cool or lead water for 10 minutes.

At the International Congress of Medicine Ehrlich stated that the biochemical action of "606" on spirochaetes is not direct but indirect, a third factor found in the body fluids being necessary.

This success is explained by the well-known experiment of Levaditi: "If living treponemas be placed in a solution of Arsenobenzol (Ehrlich's 606) they continue to live in it. But if a trace of extract of liver be added to the mixture the treponemas are destroyed."

"If 606 has to be taken up and transformed by the liver in order to become toxic to the treponema, there is no better mode of absorption of the drug than by way of the intestine, since all the veins of the intestines join the portal vein. If this be the case no route could be more indirect and more unsatisfactory for active treatment than one that is not intestinal or not intravenous (i.e. prehepatic), since some of the drug must necessarily become fixed everywhere before the passage through the liver has activated it."—Dr. SABOURAUD, La Clinique (13-4-1913).

As a result of numerous clinical experiments, Dr. Bagrov, of Moscow, has arrived at the same conclusion, and recommends the rectal method of administration of 606.

Extremely Simple in use.

No ill-effects.

Most Satisfactory Clinical Results.

Rapid Absorption.

200 cases were treated by the combined treatment in one of the London hospitals. In each case a negative reaction was attained.

MERSALV

FOR MERCURIAL INUNCTION IN CONNECTION WITH SUPSALVS TREATMENT

CHEMISTRY.—"Mersalv" contains 10 per cent. metallic mercury, which by a special mechanical process exists in an exceedingly minute state of subdivision. It is a non-greasy preparation, and, in contra-distinction to other mercurial preparations, contains no organic fat or oils. "Mersalv" is of a white creamy consistence, of pleasant odour, and cleanly in application.

IN SPECIAL GLASS-STOPPERED BOTTLES FOR HOT CLIMATES.



INTRACELLULAR

EXTRACELLULAR

Rheantine is for the treatment of Gonorrhoea by the internal administration of specially prepared Anti-Gonococcus Vaccine. Messrs. Lumière and Chrevotier had since 1913 been undertaking a fresh series of experimental and clinical researches with reference to this subject. After considerable difficulties in their endeavour to find a suitable medium for the cultivation of Neisser's diplococcus, they discovered one based on the wort of beer, which perfectly answered to their requirements, and succeeded in preparing desiccated cultures, in vacuo, forming a perfectly anhydrous and stable vaccinal powder, containing about 500 millions bacilli per milligramme. This is administered in keratinised spherules. The clinical effects of Rheantine on gonorrhoea in its various stages and in the complications of the disease are rapid, well marked and of the most encouraging character.

DOSE: 4 spherules per day.

Obtainable in metal boxes containing 28 spherules.

Antipyrin, Phenacetin and Pyramidon superseded.

CRYOGENINE

Adopted by the French Ministries for War and the Navy also by the Poor Relief Board.

"Cryogenine" is a white crystalline powder, odourless and almost tasteless, its chemical composition being Metabenzamidosemicarbazide.

"Cryogenine" has a high reputation as a **General Antipyretic and Powerful Analgesic.**

Papers on "Cryogenine" have been read before various Medical Societies by over 90 of the most eminent Continental Medical Men. In each paper clinical results of the most satisfactory character are recorded.

"Cryogenine" is obtainable in Tablets, Pills or Powder.

LITERATURE, AND CLINICAL REPORTS ON REQUEST.

THE ANGLO-FRENCH DRUG CO., LTD., (late M. BRESILLON & Co.), GAMAGE BUILDING, HOLBORN, LONDON, E.C. 1.

Telephone: HOLBORN 1311.

Telegrams: "AMPSALVS, LONDON."

Iodogenol

IODINE
in its
MOST RELIABLE FORM.

PÉPIN

IODINE
in its
MOST RELIABLE FORM.

Iodogenol is a preparation containing Iodine in an organic, assimilable form, possessing about 38 times the physiological activity of that of Iodide of Potassium. This preparation has according to the clinical reports of eminent Medical Men, succeeded where the usual Iodide treatment has failed.

Iodogenol does not produce Iodism or other bad symptoms.

INDICATIONS.—**SYPHILIS, RHEUMATISM, the various phases of TUBERCULOSIS, GENERAL DEBILITY, &c.**

LITERATURE AND CLINICAL REPORTS ON REQUEST.

THE ANGLO-FRENCH DRUG CO., LTD., GAMAGE BUILDING, HOLBORN, LONDON, E.C. 1.
Telephone: HOLBORN 1311. (Late M. BRESILLON & Co.) Telegrams: "AMFALVAS, LONDON."



THRESHER & GLENNY

Established 1755. Established 1755.
Military Tailors since the Crimean War
152 & 153 STRAND
LONDON, W.C.



By Appointment to H.M. The King.

FROM G.P. TO R.A.M.C.

ALL said and done campaigning comfort is just a matter of kit comfort. Just as well, therefore, to give a little thought to the purchase of your kit. It doesn't require much consideration to see that the firm who has been in business for 162 years and whose registered "Thresher" Trench Coat (officially recommended by the War Office) is now worn by over 16,000 officers must be the one to supply your needs the most satisfactorily.

Thresher & Glenny's free book, N, "The Complete Guide to Expenditure on Kit and Equipment," is yours for the asking.

Field Service Jackets,	
Whipcord	84/-
Slacks, Whipcord	32/6
Infantry Breeches, Bedford Cord	48/-
Field Service Caps	15/6
Sam Browne Belts (Belt and Shoulder Strap only)	from 22/6
Shirts, Khaki Flannel	from 10/6

Trench Coat—the 'Thresher' i.e., the original Trench Coat...	94/6
With Detachable Lining	126/-
British Warm—	
Waterproof frieze	84/-
Camel Vicuna	105/-
Raincoats, Regulation	73/6
Featherweight Rubber, in case	50/-

THE BURBERRY

The Super-Weatherproof

REPRESENTS the most economical and distinguished form of protection in out-door Dress for war-time.

THE BURBERRY, by its efficient resistance to rain and winds, ensures comfort and security under conditions entailing prolonged exposure to chill and damp.

THE BURBERRY, by faultless natural ventilation, entirely avoids the vitiated heat of macintosh or rubber-lined coats.

THE BURBERRY is airy light and gives a splendid sense of freedom, whilst the strong, yet supple, texture of its material imparts exceptional hard-wearing properties.

Patterns, Prices and Catalogue sent on application.

BURBERRYS' CLEANING WORKS.

* Men's and Women's Dress Cleaned and Dyed by the most up-to-date process. Weatherproof garments cleaned and reproofed in the shortest possible time. Moderate charges. Price list sent on request.

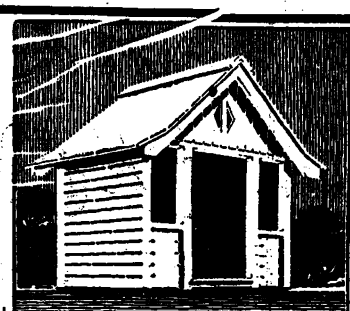
Burberrys' Basingstoke House treats direct commissions from Doctors as approval orders, i.e., replaces with its own cheque returned non-approved garment.

BURBERRYS

BASINGSTOKE

(LONDON—HAYMARKET, S.W.)

Every Burberry
Garment bears a
Burberry Label



OPEN-AIR CHÂLET

Browne & Lilly's picturesque and healthful open-air chalets are strongly recommended by the medical profession to all who require fresh air treatment. Draught and damp proof, they can easily be adjusted to sun, wind, and rain, and their price makes them accessible to all.

Write for Free Illustrated Catalogue of Portable Buildings, Motor Houses, etc.

All Goods Carr. Paid in England & Wales.

BROWNE & LILLY, LTD.
Manufacturers and Exporters,
THAMES SIDE, READING.

NATIONAL PROVIDENT INSTITUTION

Copies of Leaflets dealing with current Life Assurance topics will be sent post free to readers of the *British Medical Journal* on application to:

48 Gracechurch Street, London, E.C.

Liveries.—Chauffeur's, Coachman's, Footman's. Large Stock, all colours, Top Coats, under Coats, Breeches, Macintoshes, Leggings, Hats, Caps, Gloves, Carriage and Motor Rugs, best cloths, best make on approval. Send for Price List.—**ARMSTRONG, 33, Connaught Street, Marble Arch, London, W.**—Telephone: 1999, Paddington.

DOCTORS' DISPENSING CORKS.

Special Advertising Line

For 6 and 8 oz. Bottles, per 10 gross lot, 10/6 Car. 20/- Paid

BEST VALUE IN THE TRADE.

TRY A SAMPLE BAG.

ALL OTHER SIZES IN STOCK.

West of England Cork Manuf. Co.
16 BRIDGE STREET EXETER.

BRASS NAME PLATES,

For the Profession.

The Plates are manufactured in stout metal, deeply engraved, mounted on polished mahogany blocks, with fastenings ready for fixing, from 10s. 6d. each.

COOKE'S (Finsbury), LTD.

(J. W. COOKE & CO.),

Brass Plate Engravers, Memorial Brasses, &c.,
FINSBURY PAVEMENT HOUSE, LONDON, E.C.

Telephone 573 London Wall.

SEND FOR NEW ILLUSTRATED CATALOGUE.

TAYLOR'S TYPEWRITER Co., Ltd.

Bargains in all Makes.

BOUGHT, SOLD, EXCHANGED.

First Class Machines for
25 s. 0.

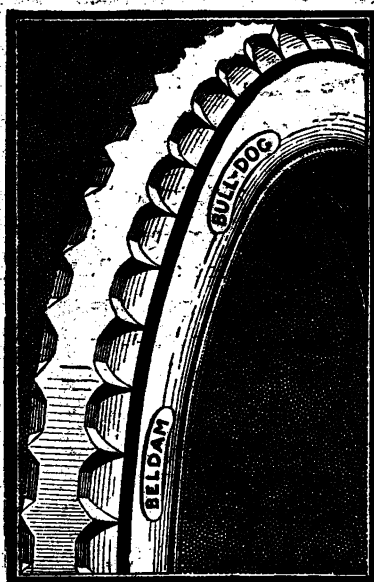
HIRE REMINGTON 7
SMITH PREMIER 4

15/- OR 35/-

Month, 3 Months.

Holborn 4810 (3 lines).

Dept. B.J., 74, Chancery Lane, London, W.C. 2.



THE BULLDOG

ALL-BRITISH TYRE.

BELEDAM All-British Tyres are famous for long wear and for wonderful road grip. Beldam Tyres are made of the finest quality materials under ideal factory conditions by workmen of the highest skill. "Bulldog" All-British Tyres are made by the same men in the same factory and of the same design. Economies effected in manufacture reduce the cost. Result: A very high standard at a very moderate price. All usual sizes made.

Write for prices.

THE BELDAM TYRE CO., LTD., Brentford, Middlesex.

Godbolds

CATALOGUE OF SECONDHAND SURGICAL INSTRUMENTS,

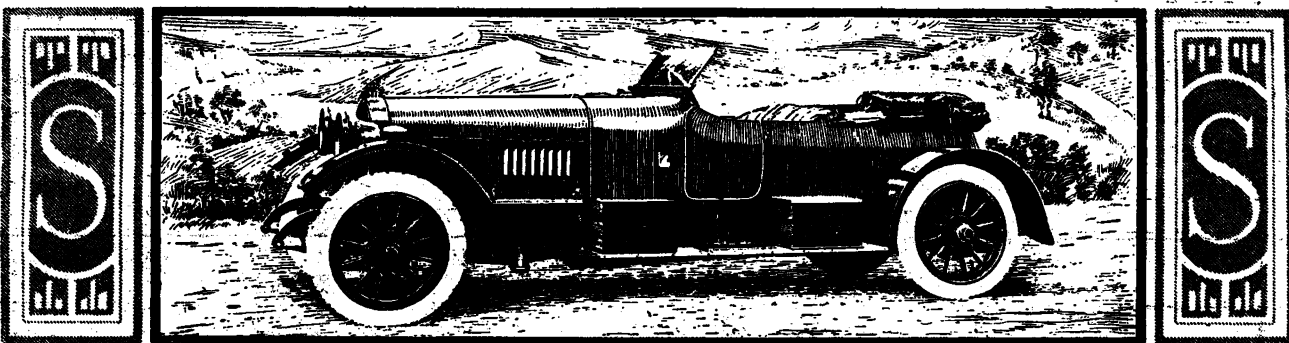
OSTEOLOGY, MICROSCOPES, POST FREE.

Telephone:
CITY 1706.

Half Sets of Osteology, Articulated Skeletons and Disarticulated Skulls. Secondhand Surgical Instruments; Osteology, and Microscopes bought, sold and Exchanged.

MILLIKIN & LAWLEY, 165, STRAND, LONDON, W.C. 2.





The Measure of Value in a Car

must be reckoned by the service it gives. The measure of service given by Sunbeam cars in this great war has unquestionably placed them upon a higher plane of value than they have ever previously attained. Owners of pre war Sunbeams will appreciate the significance of this.

SUNBEAM

The design of the post-war Sunbeam engine will reflect the experience gained in the production of

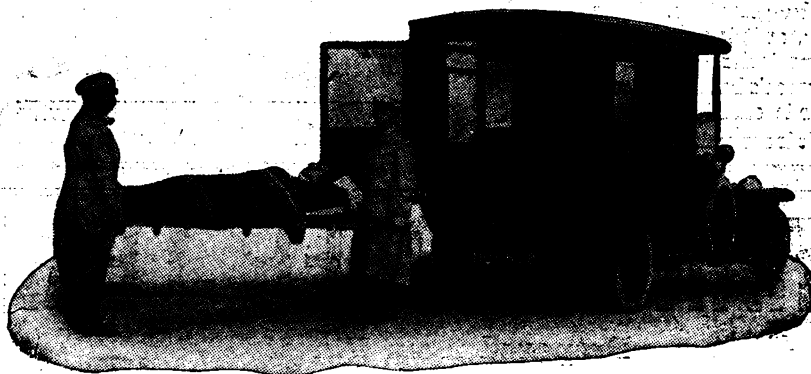
SUNBEAM-COATALEN AIRCRAFT ENGINES

The **SUNBEAM MOTOR CAR CO., Ltd.,**

Head Office and Works, Wolverhampton Manchester Showrooms, 112, Deansgate.
London and District Agents for Cars J. KEELE, Ltd., 72, New Bond Street, W. 1.

Motor Ambulances For HIRE

Silent, Speedy, Reliable.



DAIMLER Ambulances are fully equipped to afford the utmost comfort to the patient, including Stretcher mounted on special springs, Carrying Chair, Air-Bed, Waterproof Sheeting, Washstand (with an ample supply of water) and a fresh supply of linen for each case.

1 Hour up to 10 miles, £1 5s. Full Tariff on Request.

The Daimler Company, Ltd.,
HIRE DEPT.,
Store Street, Tottenham Court Road,
LONDON, W.C.

Daimler

Telephone :
Museum 4160.
Telegrams :
"Daimlerdom, London."

HOWARDS' SODII BICARB

TASTELESS

The Purest and most
Palatable made.

Stocked by
all Chemists.

PATRONISED BY THE ROYAL FAMILY.
A Real Sea Bath in your own Room.

TIDMAN'S SEA SALT

28 lbs., 3/6; Half cwt., 6/6; One cwt., 12/-. Carriage Paid to any Address in the United Kingdom.

Other Sizes: Small Packets, 1/6 per dozen; Boxes, 4d., 8d., 1/2, 2/.

Orders for 10/- worth and upwards, any sizes, Carriage Paid.

Of all Chemists, Druggists, and Drug Stores, or direct from the Proprietors—
TIDMAN & SON, Ltd., Wapping, LONDON, E.



HOLLAND'S

PATENT FOOT APPLIANCES.

RENOUMED FOR
EFFICIENCY & ELASTICITY.

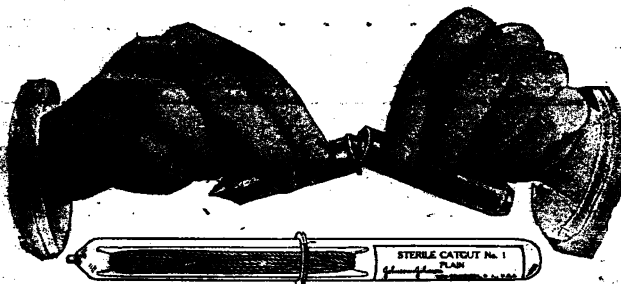
T HOLLAND & SON, 46 SOUTH AUDLEY STREET, LONDON W.

RELIABLE LIGATURES.

BREAKABLE TUBES.

In ligature and suture material, there can be nothing better conceived for the sterile and aseptic preparation and conveyance of the same, than a hermetically sealed glass tube. Catgut or silk, as it is prepared in our laboratories must reach the surgeon's hands in absolutely sterile condition.

This is our positive guarantee.



These Tubes possess advantages known to no other tubes. The perfection of Johnson & Johnson's Laboratory preparation of Ligature and suture material cannot be obtained elsewhere.

Specify
JOHNSON & JOHNSON,
or write for
"HANDBOOK OF LIGATURES"
and sample of STERILE CATGUT.

To Sole Agents:
JOHN TIMPSON & Co., Ltd.,
104, Golden Lane, E.C.

TELEGRAMS: "POROUS LONDON." TELEPHONE: 8818-WALL.

BRAND'S BEEF TEA.

Prepared from Finest

BRITISH BEEF.

Appetising, Nutritious and Convenient.

BRAND & CO., Ltd., Mayfair Works, Vauxhall, London.

FREEMAN'S

There's nothing else
quite so good.

CUSTARD

DEVONSHIRE

Doctor can highly recommend gentleman (Public School, many years experience with invalids), can receive PATIENT in his beautifully situated house in Bath. Every comfort, care and attention. Massage and electricity if required. Moderate.—Address, No. 2115, BRITISH MEDICAL JOURNAL Office, 429, Strand, W.C. 2.

DROITWICH BRINE BATHS.

WARNING.

The Public are warned that the full benefits of the treatment for Rheumatism and kindred complaints CAN ONLY BE OBTAINED IN THE NATURAL BRINE BATHS AT DROITWICH. FOR WHICH THERE IS NO SUBSTITUTE.

NAUHEIM BATHS ON THE MOST APPROVED PRINCIPLES.

Lovely Holiday District. Good Hotels, &c.
Illustrated Booklet post free from

J. H. HOLLYER.

15, Corbett Estate Offices, Droitwich (Worcs.).

SPECIAL FACILITIES TO MEDICAL MEN.

EPILEPSY.

THE LINGFIELD EPILEPTIC COLONY has accommodation for over 300 Patients. This includes a special School for children under the Board of Education. There is also a well-equipped Sanatorium, for the treatment of the more serious cases. — For further information, apply to the Resident Superintendent, The Homestead, LINGFIELD, Surrey. Telephone: 18 LINGFIELD.

EPILEPSY.

THE DAVID LEWIS COLONY has accommodation for Epileptic Patients of good social position — for Ladies and Gentlemen in special houses at the Colony — for Boys at **COLTHURST HOUSE SCHOOL**. Terms for Ladies and Gentlemen from 30/- a week, Boys at the rate of 30/- a week.

For further information apply to the Resident Medical Superintendent, David Lewis Colony, near Alderley Edge, Cheshire.

EPILEPSY.—TO MEDICAL ADVISERS.

A modern house at Maghull, Lancashire, has been specially erected and equipped for the treatment of gentlemen suffering from Epilepsy. Experienced Medical and Nursing treatment. Farming and Gardening. Billiards, lawn tennis, cricket, bowls, &c.—Apply, W. GRISWOOD & SON, Chartered Accountants, 2, Exchange Street East, Liverpool.

NEWMAINS RETREAT, NEWMAINS, LANARKSHIRE.

Licensed under the Inebriates Acts.

The House is devoted to the care of LADIES of the upper classes only, who can be treated either under the Acts or as Voluntary Patients. The place stands high and the estate is extensive, with bracing air and in good shelter. It is very retired and beautiful, well situated for the treatment of Inebriety, Narcomania and other perversions, Neurasthenia, Hysteria, and Minor Mental Ailments. No patient under Certificate of Insanity can be received.

References:—Dr. G. M. ROBERTSON, Dr. YELLOWLEES, Dr. RISIEN RUSSELL, Dr. OSWALD, and others.

Terms and particulars on application to "Superintendent, The Retreat, Newmains, Lanarkshire." Nearest Station: Hartwood, Cal. Rly.

INEBRIETY.

DALRYMPLE HOUSE, RICKMANSWORTH, HERTS.

For the treatment of gentlemen under the Act and privately. Established 1883 by an association of prominent medical men and others for the study and treatment of Inebriety; profits, if any, are expended on the Institution. Large secluded grounds on the bank of the River Colne. All kinds of outdoor and indoor recreations and pursuits.

For further particulars, apply to F. S. D. Hogg, M.R.C.S., &c., Resident Medical Superintendent. Telephone: 16 Rickmansworth.

INEBRIETY.

MELBOURNE HOUSE, LEICESTER.

PRIVATE HOME FOR LADIES.

Med. Attendant: R. SEVESTRE, M.A., M.D. Cantab. Prin.: Hy. M. RILEY, Assoc. Soc. Study of Inebriety. 30 years' experience. Excellent Med. References.

For terms and Particulars apply Miss RILEY or PRINCIPAL. Telegrams: "MEDICAL, LEICESTER."

Nat. Telephone: 789.

HOMES for INEBRIATE WOMEN

Ellison Lodge, HERNE HILL, S.E.

Corngreaves Lodge, Erdington, BIRMINGHAM

Hamond Lodge, Terrington St. Clement,

King's Lynn, NORFOLK.

Temple Lodge, TORQUAY.

Terms: { DRAWING ROOM, £2 2s., £1 1s.
WORK ROOM, 15s., 12s. 6d., 10s.
KITCHEN, 7s. 6d. weekly.

No patient received for less than twelve months. No Female patient over fifty years of age admitted.

Application for forms and particulars to—

Rev. GERALD A. THOMPSON,

Secretary, Church of England Temperance Society, 50, Marsham Street, Westminster, S.W.

THE MOAT HOUSE,

Tamworth, Staffordshire.

A HOME FOR NERVOUS AND MENTAL CASES.

Stations: L. & N. West. and Mid. Railways.

The House stands in grounds of ten acres (within five minutes' drive of either station), and is devoted to the care and treatment of a few Ladies suffering from Nervous and Mental Affections, who enjoy the comfort, privacy, and occupations of home life. Voluntary patients received without certificates.—For terms, &c., apply to Resident Licenseses, EDWARD HOLLINS, M.A. Cantab., or (Mrs.) S. A. MICHAUX.

THE WARNEFORD,

OXFORD.

HOSPITAL FOR MENTAL DISORDERS.

President: The Right Hon. the EARL OF JERSEY.

This Registered Hospital, for the treatment and care, at moderate charges, of mental patients belonging to the educated classes, stands in a healthy and pleasant situation on Headington Hill, near Oxford. The gardens and grounds are extensive, the internal appointments are comfortable and refined, and the premises are lighted by electricity. The utmost degree of liberty, consistent with safety, is permitted, and amusements and occupation are amply provided. Parties are sent for change to the seaside during summer. Voluntary boarders are also received for treatment.—For further particulars apply to the Medical Superintendent.

ST. GEORGE'S RETREAT.

Burgess Hill, Sussex.

An old-established licensed house under the management of the "Augustinian Sisters," for the treatment of LADIES MENTALLY AFFLICTED. Grounds nearly 300 acres. Drives and motoring. Marine, Brighton Residence (for change). Voluntary boarders taken. Resident and visiting medical officers. London 1½ hours.—For terms apply to the Superioress.

Telephone: (Post Office 90x).
Telegrams: "Wivelsfield Green."

In Beautiful Country. 18 miles from London.
Littleton Hall, Brentwood, Essex.

(400 feet above sea-level). A HOME for a few LADIES Mentally Afflicted. Voluntary Boarders Received. Large grounds. Liverpool Street half-an-hour. Stations: Brentwood, 1 mile; Shenfield, 1 mile. Vacancy. For terms, &c., apply Dr. HAYNES. Telephone & Telegrams: "Haynes, Brentwood, 45."

BROOKE HOUSE,

CLAPTON, LONDON, N.

A HOME for the treatment of a limited number of Ladies and Gentlemen suffering from Nervous and Mental Diseases.

Stands in extensive grounds, and is well adapted for the treatment of Nervous disorders according to modern methods.

Resident Physician—GERALD JOHNSTON.

Railway Station: Clapton. Telephone: 1648 Dalston.

BETHEL HOSPITAL FOR MENTAL DISEASES,

Norwich.

(ESTABLISHED 1713.) Telephone: 330 NORWICH. An endowed Hospital for the reception of PRIVATE PATIENTS of both sexes. Voluntary Boarders admitted without certificates. Terms, from 35s. per week.—Full particulars on application to the MEDICAL SUPERINTENDENT.

Home

for the care and treatment of

Mentally Afflicted Ladies.

OTTO HOUSE,

47, North End Road, West Kensington, W.

The Home stands in large grounds close to West Kensington Station.

For Terms, apply to Miss BRODIE, Resident Lady Superintendent.

Telephone: Hammersmith 1001.

A. H. SUTHERLAND,

(Licensed Proprietor),

2a, MARLOES ROAD, KENSINGTON, W.

BARNWOOD HOUSE

HOSPITAL FOR MENTAL DISEASES,

BARNWOOD, near GLOUCESTER

Telephone No. 307.

Exclusively for PRIVATE PATIENTS of the UPPER AND MIDDLE CLASSES.

This institution is devoted to the care and treatment of persons of both sexes at moderate rates of payment.

Under special circumstances the rates of payment may be reduced by the Committee.

For further information apply to JAMES GREIG SOUTAR, M.B., the Medical Superintendent.

BISHOPSTONE HOUSE, BEDFORD.

PRIVATE HOME for MENTALLY AFFLICTED LADIES. Ten only received. Terms from 4½ gns. weekly. Apply, "Medical Officer," or Mrs. PEELE. Telephone 708.

Grove House, All Stretton,

Church Stretton, Shropshire.

A Private HOME for the care and Treatment of a limited number of ladies mentally afflicted. Climate healthy and bracing. Proprietor, Dr. MCCLINTOCK.

THE GRANGE,

NEAR ROTHERHAM.

A HOUSE licensed for the reception of a limited number of ladies of unsound mind. Both certified and voluntary patients received. This is a large country house with beautiful grounds and park, 5 miles from Sheffield. Station, Grange Lane, G.C. Railway, Sheffield. Telephone No. 34, Rotherham. Resident Physician—GILBERT H. MOULD, L.R.C.P., M.R.C.S. Consulting Physician—CROCHLEY CLAPHAM, M.D., F.R.C.P.E.

ST. ANDREW'S HOSPITAL

FOR MENTAL DISEASES

NORTHAMPTON.

For the Upper and Middle Classes only.

President—The Rt. Hon. THE EARL SPENCER, K.G. This Registered Hospital is pleasantly situated in 118 acres of park and pleasure grounds.

Every facility is provided for cricket, football, hockey, croquet, lawn tennis, bowls, golf, motoring, boating and gardening.

Terms from 31/6 a week. Voluntary boarders not under certificates are received.

Patients paying higher rates can have Special Attendants, Horses and Carriages, and Private Rooms in Villas in the Hospital grounds, or at

MOULTON PARK,

a branch establishment, two miles from the Hospital, where there is a farm of 473 acres, which supplies the Hospital with meat, milk, and other farm produce.

BRYN-Y-NEUADD HALL, LLANFAIRFECHAN,

The Seaside House of St. Andrew's Hospital, is beautifully situated in a Park of 331 acres, close to the sea, and in the midst of the finest scenery in North Wales.

Patients can enjoy good cricket, lawn tennis, croquet, golf, trout fishing and bathing.

Patients or Boarders may visit this branch for long or short periods, and can have Private Rooms in Villas in the Park.

For particulars apply to the Medical Superintendent, St. Andrew's Hospital, Northampton.

TELEPHONE No. 56.

Telegraphic Address, "RELIEF, OLD CATTON."

Telephone, 290 NORWICH

Nervous and Mental Affections.

LADIES ONLY RECEIVED.

THE GROVE, OLD CATTON,

Near NORWICH.

A High-class Home for the Curative Treatment of Nervous Affections. Situated a mile from the City of Norwich. Special and Separate accommodation is provided for those suffering from Hysteria, and for cases of Insipient Mental trouble who can be received as Voluntary Boarders without certificates, and occupy their own private suites of apartments. A staff of experienced nurses has been organised to take charge of patients in their own homes. For terms, &c., which are moderate and inclusive, apply to the Misses MCINTOCK, or to CECIL A. P. OSBURN, F.R.C.S.E., Medical Superintendent.

CHEADLE ROYAL.

A HOSPITAL FOR MENTAL DISEASES, CHEADLE, CHESHIRE,

and its seaside branch,

CLAN-Y-DON, COLWYN BAY, NORTH WALES.

The object of the above is to provide the most efficient means for the cure of mental diseases in those who belong to the upper and middle classes.

Voluntary boarders as well as certified patients are received for treatment.

For terms and further information apply to the Med. Supt., W. SCOWCROFT, M.R.C.S., &c., at Cheadle, or he may be seen at 72, Bridge St., Manchester, on Tuesdays and Fridays from 2 to 3.

TEL.: 208 "Cheadle Hulme." 3594 "Manchester."

BOREATTON PARK,

BASCHURCH, SALOP.

A first-class Country Mansion especially adapted for the reception of a limited number of Ladies and Gentlemen mentally affected.

For particulars apply Dr. SANKEY.

PECKHAM HOUSE,

(ESTABLISHED 1826).

112, PECKHAM ROAD, LONDON, S.E.

Telegrams: "Alleviated, London."

Telephone: New Cross 576.

An Institution licensed for the CARE and TREATMENT of THE MENTALLY AFFLICTED of Both Sexes. Conveniently situated. Electric trams and omnibuses from the Bridges and West End pass the House. Private Houses, with electric light, for suitable cases adjoining the Institution. Holiday Parties sent to the Seaside Branch at Worthing during the Summer months.

MODERATE TERMS.

Apply to MEDICAL SUPERINTENDENT for fuller particulars.

THE ROYAL EARLSWOOD INSTITUTION FOR MENTAL DEFECTIVES.

(Formerly the EARLSWOOD ASYLUM.)

REDHILL, SURREY.

FOR THOSE REQUIRING CONTROL with EXPERT SUPERVISION, and needing SPECIAL TRAINING in useful occupations. SCHOOLS, FARMING, and various TRADE WORKSHOPS. SELECTED CASES admitted on reduced inclusive fees. THOSE UNABLE TO PAY admitted by votes of Subscribers, with part-payment towards cost.

RECREATIONS: ALL outdoor games, EXCELLENT BAND by Male Staff, for Concerts, Dancing, &c.

Apply: THE MEDICAL SUPERINTENDENT, Earlswood, Redhill, Surrey, or to the Secretary, Mr. HARRY HOWARD, 14-16, Ludgate Hill, E.C. Telephone: Redhill 344. Telephone: City 5297.

CAMBERWELL HOUSE, 33, PECKHAM ROAD, S.E.

Telegrams: "Psycholia, London."

Telephone: New Cross 1057.

For the Treatment of Mental Disorders.

Completely detached villas for mild cases. Voluntary Boarders received. 20 acres of grounds. Cricket, tennis, croquet, squash racquets, bowls, and all indoor amusements. Senior Physician: FRANCIS H. EDWARDS, M.D., M.R.C.P. An Illustrated Prospectus, giving full Particulars and Terms, may be obtained on application to the SECRETARY.

HOVE VILLA, BRIGHTON.—A Convalescent Branch of the above.



NORTHWOODS HOUSE, WINTERBOURNE, near BRISTOL.

FOR PRIVATE TREATMENT OF MENTAL DISEASES.

Situated in a large park in a healthy and picturesque locality, easily accessible by rail via Bristol, Winterbourne, Patchway, or Yate Stations. Uncertified Boarders received.—For further information see Medical Directory, page 2053. Terms moderate. Apply to Dr. J. D. THOMAS, Resident Physician and Licensee, for full particulars.

HAYDOCK LODGE, Newton-le-Willows, LANCASHIRE.

A PRIVATE MENTAL HOSPITAL FOR THE UPPER AND MIDDLE CLASSES ONLY, EITHER VOLUNTARY, OR UNDER CERTIFICATE.

Patients treated and classified according to their social and mental condition. Terms from 31s. 6d. Private apartments on special terms. Established for 60 years. Under the same management 25 years. Recovery rate 50 per cent. Situated midway between MANCHESTER and LIVERPOOL. Two miles from Newton-le-Willows Station on the L. & N. W. Railway, connecting it with all parts.

Medical Staff: Resident Medical Proprietor CHARLES T. STREET, M.R.C.S., L.R.C.P., LIVERPOOL: 47, Rodney Street. MANCHESTER: Winters' Buildings, St. Ann's St. Resident Medical Superintendent J. C. WOOLTON, M.R.C.S. Ed., L.R.C.P. LOND. Dr. STREET, Thursday 2 till 4. Dr. P. G. MOULD: Dr. G. B. MOULD, Tuesday and Visiting at Sir JAMES BAIRN, LTD., M.D., F.R.C.P., 72, Rodney St., Liverpool. Telephone 2456 Royal. Thursday 12 to 1.30. Telephone 7611 Manchester. Consulting: W. B. WARRINGTON, M.D., F.R.C.P., 63, Rodney St., Liverpool. Liverpool. Other days by appointment. Physicians: G. E. MOULD, Physician for Mental Diseases to the Sheffield Royal Hospital, The Grange, Rotherham. For further particulars and forms of admission apply Resident Proprietor, Haydock Lodge, Newton-le-Willows. Tele.: "STREET, Ashton-in-Makerfield." Tel.: 11 Ashton-in-Makerfield.

NORTHUMBERLAND HOUSE, GREEN LANES, FINSBURY PARK, N.

(ESTABLISHED 1814.)

A PRIVATE HOME FOR THE TREATMENT OF LADIES AND GENTLEMEN SUFFERING FROM MENTAL AND NERVOUS AFFECTIONS.

Four miles from Charing Cross and easy of access from all parts. Six acres of ground, highly situated, facing Finsbury Park. Private Villas in suites of rooms. Voluntary Boarders received without certificates.

For further particulars apply to the RESIDENT PHYSICIAN.

Telephone No. 888 North.

Telegraphic Address: "Subsidiary, London."

THE COPPICE, NOTTINGHAM.

HOSPITAL FOR MENTAL DISEASES.

President: The Right Hon. the EARL MANVERS.

This Institution is exclusively for the reception of a limited number of Private Patients of both sexes, of the Upper and Middle Classes, at moderate rates of payment. It is beautifully situated in its own grounds on an eminence a short distance from Nottingham, and from its singularly healthy position and comfortable arrangements, affords every facility for the relief and cure of those mentally afflicted.

For terms, &c., apply to the Medical Superintendent.

MIDDLETON HALL,

MIDDLETON ST. GEORGE,

Near DARLINGTON, Co. DURHAM.

Private house for the care and treatment of ladies and gentlemen suffering from mental diseases.

This house, which is situated in a healthy and pleasant country, has been recently erected from plans approved by the Commissioners in Lunacy, and has been comfortably furnished throughout. Private rooms and special attendants are provided if required.

Terms to be had on application to L. HARRIS-LISTON, M.D., Medical Superintendent.

CLARENCE LODGE,

CLARENCE ROAD, CLAPHAM PARK, S.W. 4.

Stations: Clapham Road and Clapham Common.

LICENSED HOME FOR MENTAL & NERVOUS PATIENTS. Twelve Ladies only received for treatment under eminent Specialist, and given individual care and the comforts of their own homes. Suitable cases received as Voluntary Boarders.

The House is surrounded by well-wooded grounds, shady lawns for tennis, croquet, &c. Associated rooms, private rooms, or suites; moderate terms. Illustrated prospectus from Resident Licensee, Mrs. THWAITES.

T.N.: 191, Brighton.

SPRINGFIELD HOUSE,

Near BEDFORD.

(Telephone No. 17.)

A PRIVATE HOME FOR MENTAL CASES.

Sunny situation, Dairy Farm, extensive grounds for Golf, Cricket, Football, Lawn Tennis, and Croquet; also an American Bowling Alley, Motoring, &c.

TERMS FROM 3 GUINEAS PER WEEK (including Separate Bedrooms for all Suitable Cases without extra charge).

For forms of admission, &c., apply to DAVID BOWER, M.D., as above, or at 5, Duchess Street, Portland Place, W., on Tuesdays, from 4 to 5.

STRETTON HOUSE,

Church-Stretton, Shropshire.

A Private HOME for the treatment of Gentlemen suffering from Mental diseases. Bracing hill country. See "Medical Directory," p. 1899.—Apply to Medical Superintendent. Phone 10 P.O. Church-Stretton.

Coton Hill Mental Hospital,

near Stafford.
Chairman of the Committee of Management, The RIGHT HONOURABLE THE EARL OF DARTMOUTH.—This Hospital, which is beautifully situated in a high and healthy position, with extensive grounds, cricket field, lawn tennis courts, golf links, &c., is devoted to the care and treatment of the mentally afflicted of the upper and middle classes. Terms on application. Private rooms with special attendants in the Hospital, or semi-detached villas in the grounds can be arranged.

For further particulars apply to R. W. HEWSON, L.R.C.P. & S. Edin., Medical Superintendent

THE RETREAT PRIVATE ASYLUM,

Near Armagh, Ireland, ESTAB. 1831.

Licensed under Government Inspectors' supervision for the reception of Ladies and Gentlemen of the Upper and Middle Classes suffering from MENTAL AND NERVOUS DISEASES (Voluntary Boarders and Inebriates admitted).

For particulars apply to the Proprietor, Dr. J. GOWER ALLEN, J.P.
Telegraphic Address: "Loughgall, Armagh."

OVERDALE, WHITEFIELD, near Manchester.

Telephone—33 Whitefield.

A HOUSE for reception of Ladies suffering from mental and nervous ailments, certified and uncertified, situated in a healthy country district. Resident Physician—PHILIP G. MOULD, M.R.C.S., L.R.C.P.—For terms apply to the Resident Physician.
Consulting rooms—30, St. Ann Street, Manchester.

Glendossil and Hurst Houses.

—Considerable improvements have recently been made in both these Houses. They are in every way adapted for the care and treatment of the mentally afflicted of the upper and middle classes.—Apply, S. H. AGAR, Henley-in-Arden, Medical Superintendent.

MALLING PLACE, KENT.

BEAUTIFUL SEVENOAKS DISTRICT
Easy from town or Coast. Both sexes, mentally unsound, received under perfect condition of treatment. Tel. and Teleg.: Adam, 2, Malling; London, 26, Harley Street.

WYE HOUSE, BUXTON.

Established 1867

For the care and treatment of Ladies and Gentlemen mentally afflicted. Voluntary Boarders received. Situated 1,200 ft. above sea level, facing S.; sheltered from N. and E. 14 acres of ground. 10 minutes from Pavilion Gardens, Bath, and L.N.W. and Mid. Stations. Seaside Branch in Wales.—For terms apply to the Resident Medical Superintendent, GRACE DICKSON, L.R.C.P., &c. Nat. Tel. 130.

HEIGHAM HALL, NORWICH.

A Private Hospital for Cure of Ladies and Gentlemen suffering from Nervous and Mental Diseases. Boarders received. French Chef. 2 to 20 gns. weekly. See Advt. Med. Directory, p. 2052. Prop. and Resident Physician J. G. GORDON MURK, M.D., F.R.S.E. Telephone 50 Norwich.

BOURNEMOUTH HYDRO.

With finest Sun-lounges and Marine Balcony on the South Coast.

Every kind of Bath.
Every kind of Massage.
Every kind of Electricity.
Every kind of Diet.
Carlsbad and Vichy Waters, &c.
High Frequency. Electric Lift.

Prospectus from Secretary. —Telep. 341.
Resident Physician:—W. JOHNSON SMYTH, M.D.



CATERHAM SANITARIUM.

Battle Creek System. All Baths, Massage, and Electricity. Bergonié Chair and Diathermy. Telephones 88. T.A. "Hydro," Caterham.
Resident Physician: A. B. OLSEN, M.D., D.P.H.

DINSDALE PARK,

Near DARLINGTON.

Established 1855.

Licensed House for the Care and Treatment of quiet and chronic cases of Mental Disease. Most comfortable home. Beautiful surroundings.

For Terms apply to Dr. H. W. KERSHAW, Resident Physician and Proprietor.

Chesterfield.—Worcester Park, Surrey.

RESIDENT PATIENT received in lovely old world secluded doctor's house. Good cuisine. Trained Nurse. Large well wooded garden. Motoring and all outdoor sports. Billiards. Terms moderate.—LOUIS G. MACRORY, M.D. Telephone: Maken 159.

BRIGHTON.

CHARMING RESIDENCE (4 acres pleasure grounds), Massage, Electrical, Nervous Diseases, Chronic, Convalescent, Maternity, and Rest Cure Cases received. Bungalow in grounds suitable for any case.—Dr. HOLMES MEYRICK, Sylvan Hall, Upper Lewes Road. Telephone: 362 Brighton.

Haslemere Nursing Home,

"Courtsfold," Haslemere, Surrey.—Rest Cure, Weir-Mitchell, General Nursing, Resident Masseuses. Stands in 3½ acres and on gravel soil. Modern sanitation. Permanent Patients also taken, or those needing rest and change. Superintendents: Misses RATTRAY & MOORE. Telephone, 22 Haslemere.

Doctor, having had several

years' asylum experience, can receive certified LADY PATIENT for treatment. Modern residence, pleasantly situated, with sunny garden in healthy bracing position within view of sea. Comfortable home with every care and attention. Terms 5 guineas inclusive. Nerve or Rest Cure cases taken from 3 guineas per week.—B. A. MOLYNEUX, M.B., St. Helen's House, St. Helen's, Hastings.

Medical man receives one

good-class RESIDENT PATIENT (nervous, borderland, or mental). Having had experience in Institution work and with private patients, a certified or uncertified case received. Every comfort and the interests of home life. Well-appointed country house (billiard room), and farm land. Carriage riding, motoring, golf, &c.—Dr. DUFF, Gillington Rise, Bexhill-on-Sea, Sussex. Phone: 11 Gillington.

London Fever Hospital,

Liverpool Road, Islington, N.

For the treatment of non-pauper patients suffering from infectious fever. Part of the cost is paid by the patient, the balance being found by the Hospital.

There are a few private rooms at 5½ guineas a week, payable weekly in advance.

No aid is received from the rates. Subscribers domestic servants removed at small cost and treated free of charge. For admission, apply to the Secretary, W. CHRISTIE, Major.

SMEDLEY'S HYDRO, MATLOCK.

[Established 1853]

LARGEST AND MOST COMPLETE.

Resident Physicians: { G. C. R. HARBINSON, M.B., B.Ch., B.A.O. (R.U.I.)
{ R. MACLELLAND, M.D., O.M. (Edin.)

Unrivalled suites of Baths for Ladies and for Gentlemen, including Turkish and Russian Baths. Aix and Vichy Douches, Massage, and Weir Mitchell treatment, an Electric Installation for Baths and Medical purposes, Dowsing Radiant Heat, D'Arsonval High Frequency, Roentgen X-Rays, Fango Mud, Nauheim Baths, etc. Special provision for Invalids. Milk from own farm. Large Winter Garden. Night attendance. Rooms well ventilated, and all bedrooms warmed in Winter. A large Staff (upwards of 60) of trained Male and Female Nurses, Masseurs, and Attendants.

Prospectus and full information on application to H. CHALLAND, Managing Director.
Telegrams—"SMEDLEY'S, MATLOCK."

Telephone—No 17.

CLEVELEYS HYDRO

NEAR BLACKPOOL.



**BRIGHT, BREEZY, BRACING.
MAGNIFICENT NEW PALM COURT.
ALL HYDROPATHIC BATHS.**

Including Dowsing Radiant Heat and Brine Baths.
GOLF: 18 Holes in own grounds (120 acres.)
Tel. 24 Cleveleys. Write Tariff. L. HATHURST, Manageress.

PAINSWICK SANATORIUM, COTSWOLD HILLS

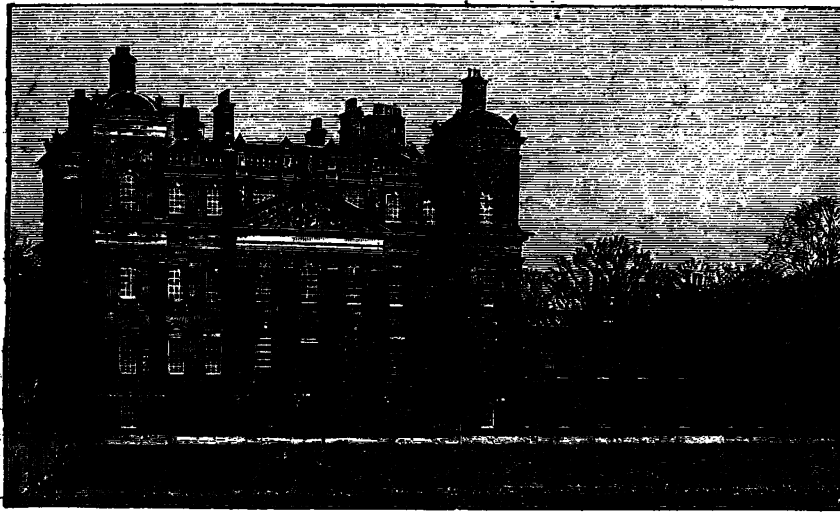
Specially built for OPEN-AIR TREATMENT on the Chalet system. Delightfully situated in "ow" grounds of 8 acres on southern slope 600 feet above sea-level. Bracing hill air. Dry porous subsoil. Sheltered from north and east. Specially designed Sleeping Bungalows, Verandahs, and Revolving Shelters. Specially constructed Recreation Hall. Separate Bedrooms. Electric communication between each Sleeping Chalet and rooms of Staff. Inoculation Treatment in all suitable cases without extra charge. Resident Physician. Trained Nurses. Terms: Two and a Half Guineas weekly. Apply, WM. MCCALL, M.D., Painswick, Glos.

The Society for the Prevention and Cure of Consumption in the County of Durham.

Early cases are received—Men at STANHOPE SANATORIUM, Women and Children over 10 at WOLSINGHAM SANATORIUM.
Terms Two Guineas weekly. Approved by L.G.B. for National Health Insurance cases.

Apply to the Secretary, Mr. F. FORREST, 54, John Street, Sunderland.

DUFF HOUSE, Banff, Scotland,



a former home of H.R.H. the Princess Royal and His Grace the late Duke of Fife, is now open to receive Patients suffering from

DISORDERS OF THE STOMACH AND INTESTINES, DIABETES, GOUT.

and other complaints which need skilled chemical investigation and dietetic treatment.

The House is fitted with Laboratories, X-ray Installation, Medical Baths and Lifts. The climate is mild, and the rainfall the lowest in Scotland.

The Staff includes Physicians who have had special experience of Chemical Pathology, Dietetics, and X-ray work, an Analytical Chemist, a Matron, and fully Trained Nurses.



NORDRACH-ON-DEE

(Near BALMORAL), SCOTLAND.

Open-Air Treatment of CONSUMPTION and allied diseases.

TUBERCULIN and VACCINE TREATMENT associated with Laboratory Control is available for all patients residing in this Sanatorium.

Research Laboratory, Fully Equipped Throat Room, Roentgen Ray and Ultra Violet Light Installations.

Address, Dr. LAWSON, Banchoory, N.B.

VALE OF CLWYD SANATORIUM.

This Sanatorium (opened 1901) is established for the treatment of Tuberculosis as carried out by Dr. OTTO WALTHER, of Nordrach. It is situated in the midst of a large area of park-land, at a height of 450 feet above sea-level, on the western slopes of mountains rising to over 1,800 feet, which protect it from north and east winds, and provide many miles of carefully graduated uphill walks, similar in character and extent to those at Nordrach.

Small rainfall. Porous subsoil. Large amount of sunshine. Electric lighting, and hot water radiators in each room. The Physician himself was a patient at Nordrach.

For particulars apply to GEORGE A. CRACE-CALVERT, M.B., &c., Llanbedr Hall, Ruthin, North Wales.

PENDYFFRYN HALL SANATORIUM

Physicians:—Dr. DOBSON and Dr. GERATY.

FOR OPEN AIR AND INOCULATION TREATMENT OF ALL FORMS OF TUBERCULOSIS.

One of the first Sanatoria opened in the United Kingdom to carry out the Treatment as practised at Nordrach. Carefully graduated walks rise through pines, gorse and heather, to a height of over 1,000 feet above sea level, commanding extensive views of both sea and mountains, sheltered from E. and N.E. winds. Climate mild and bracing. Small rainfall. Large average of sunshine. There are over five miles of walks in the private grounds. Rooms heated by hot-water radiators and lit by electric light.—Apply, Secretary, Pendyffryn Hall, Penmaenmawr, North Wales. Telegrams: Pendyffryn; Telephone: No. 20 Penmaenmawr.

GRAMPIAN SANATORIUM

KINGUSSIE, INVERNESS-SHIRE.

Specially built for the Open-Air Treatment of Tuberculosis, and opened in 1901. Bracing mountain air. Elevation 860 feet above sea-level. Sheltered situation in pine wood. Graduated walks.

Electric light throughout building and in shelters. Inoculation Treatment available for patients—18 beds.

Resident Physician. Terms 4 guineas weekly. For further particulars, apply WALTER DE WATTEVILLE, M.D., Kingussie, N.B., Medical Director.

MENDIP HILLS SANATORIUM, FOR THE OPEN-AIR TREATMENT.

Specially built, facing South. 500 acres of Sanatorium grounds—meadow and woodland; sheltered pine avenues. Altitude 850 feet, magnificent view for miles South; hot-water radiators and electric light. Special features are breathing, singing, and graduated exercises, walking and tramping; continuous inhalation; decided success; electric treatment. Individual attention. Resident Physician—O. MURRU, M.D., M.R.C.S., L.R.C.P.

Terms from 3 Guineas Weekly.

For particulars, apply, SECRETARY, Hillgrove, Wells, Somerset.

THE HOME SANATORIUM, WEST SOUTHBOURNE, NEAR BOURNEMOUTH.

For early Tuberculosis. Efficient hygienic treatment combined with home comfort. Skilled nursing. Night nurse. Excellent table. Beautiful grounds. Croquet and Billiards.

Charges: Three to Five Guineas Weekly.

For Illustrated Prospectus and full particulars apply to J. E. ESSLEMONT, M.B., Ch.B., Resident Superintendent.

Telegrams: "SANABILL, BOURNEMOUTH."

Telephone: 61, SOUTHBOURNE.

HOME FOR FEEBLE-MINDED.**BRUNTON HOUSE, LANCASTER.**

There are now a few vacancies in this well-appointed private establishment. It is easily accessible from Lancaster, overlooks Morecambe Bay, and possesses extensive gardens and grounds, with tennis and croquet lawns. Varied scholastic and manual instruction. Individual attention is given to pupils by experienced staff under a Resident Physician and Lady Matron. Terms on application to—
Dr. W. H. COUPLAND.

SCHOOL FOR FEEBLE-MINDED,**"Rydal Hurst,"****TENNYSON AVENUE, CHESTERFIELD.**

For Boys and Girls from 3 years upwards. Special attention given to health, speech, general education, massage and Swedish exercises.

For prospectus and terms apply Miss MOLE.

The Grange, Buxton.—

SCHOOL FOR GIRLS from 10 to 19 years. Thorough general education, with great attention to health. Elder girls may specialise in Art, Music, Literature, or Languages. New Domestic Science branch for girls over 18. Tennis courts and field for Hook y and Cricket. Prep. for Exams.—Principals, the Misses DODD.

UNIVERSITY EXAMINATION POSTAL INSTITUTION.

17, RED LION SQUARE, LONDON, W.C. 1.

18 Medical Tutors, including 9 Gold Medalists.

(Manager: Mr. E. S. WEYMOUTH, M.A.Lond.)

Telephone 6313 Central.

POSTAL OR ORAL PREPARATION FOR ALL MEDICAL EXAMINATIONS. SOME RECENT SUCCESSES.

N.B.—There are different modes of counting "successes." Figures given below do not include successes of private pupils of the Tutors. List of over 20 years' Successes sent on application. Names not inserted if privacy is desired.

M.D.(Lond.), 1901-16; (5 Gold Medalists during 1913-15) **222**

M.S.(Lond.), 1902-16 (including 3 Gold Medalists) **15**

M.B., B.S.(Lond.), Final 1906-16 (Besides 8 who tried part only) **70**

Primary F.R.C.S.(Eng.), '06-16 **46**

Final F.R.C.S.(Eng.), 1906-16. Including 5, May 1914, Exam **29**

M.R.C.P.(Lond.), 1914-16 **17**

D.P.H., (Various) 1906-16 **139**

F.R.C.S.(Edin.), 1906-16 (3 entered 1914. All successful) **11**

M.R.C.S.L.R.C.P. Final 1906-16 (Besides 5 who tried part only) **87**

M.D.(Durh.) (Practitioners) '06-16 **22**

M.D.(Various). By Thesis. Legitimate assistance. Moderate fees. Numerous successes. 5 successful Edin. M.D., July, 1913, including 3 "commended."

R.A.M.C.(Ent.), Jan. '14. Top Candidate.

R.N.(Entrance), March '14. Top Candidate.

I.M.S., July '15. Second Candidate.

Also **D.T.M., L.M.S.S.A., M.B.(Cantab., &c.)** Triple Qualification, &c.

Medical Prospectus (38 pages), General Prospectus with names of Tutors, and special M.D. Pamphlet sent on application.

MEDICAL PRELIMINARY ORAL LESSONS OR POSTAL COURSE.

Apply to the Manager of the Institution, Mr. E. S. WEYMOUTH, M.A., 17, Red Lion Square, W.C. 1.

F.R.C.S.Edin.

The TUTORIAL CLASS for the next Examination will commence shortly. Correspondence Tuition if desired.—For particulars apply FRED. GRAHAM, M.D., F.R.C.S.Ed., 16, Mayfield Gardens, Edinburgh.

VALUABLE BOOK FREE!

Are you preparing for any Medical or Surgical Examination?

Send Coupon below for our valuable publication

"Guide to Medical Examinations."

The Examinations of the Con-joint Board.
The M.B. and M.D. Degrees of all British Universities.
How to pass the F.R.C.S.Exam.
The M.S.Lond. and other Higher Surgical Examinations.
The M.R.C.P.
The D.P.H. and how to obtain it.
The Diploma in Tropical Medicine

Do not fail to get a copy of this Book before commencing preparation for any Examination. It contains a large amount of valuable information.

Send for your Copy now!

The Secretary.
MEDICAL CORRESPONDENCE COLLEGE,
1a, Wimpole Street,
Cavendish Square,
London, W.

Str.—Please send me a copy of your "Guide to Medical Examinations" by return.

Name.....

Address.....

Examination in which interested }

ST. MARY'S HOSPITAL MEDICAL SCHOOL,

PADDINGTON, W.
(University of London).

The WINTER SESSION will begin on October 1st, 1917. LECTURES and CLASSES in Preliminary, Intermediate and Final Subjects of the Curriculum will be resumed on this date.

For illustrated prospectus apply to the Dean, Sir JOHN BROADBENT, Bart., M.D., or to the School Secretary.

POST-GRADUATE STUDY. London School of Clinical MEDICINE.

At the DREADNOUGHT HOSPITAL, Greenwich, and its affiliated Hospitals. Operative Surgery and Pathology as usual. Clinical Classes abandoned temporarily owing to the absence of many members of the Staff on War duties. C. C. CHOYCE, Dean.

ST. EDITH'S SCHOOL, BRACKLEY, NORTHANTS.

TO BE OPENED IN SEPTEMBER.

A Woodard School for Girls.

Fees - 150 guineas a year.

Headmistress - Miss E. R. PEARSON, M.A. (Late of St. Leonard's School, St. Andrews).

The House is a magnificent mansion situated on high table land 400 feet above sea level, and is ideally convenient for the purposes of a Girls' School. There are 11 acres of gardens and playing fields.

While aiming at a thorough general education it is intended to pay special attention to languages, music, and art.

Enquiries should be directed to Miss PEARSON, St. Edith's School, The Manor House, Brackley, Northants.

WHY WORRY SEEKING A SCHOOL?

Information and Prospectuses Free. Any locality (Boys, Girls). State age, requirements, some idea fees.—Secretary, SCHOOLS AGENCY, 62, King Street, Manchester.

St. Thomas's Hospital Medical SCHOOL, Albert Embankment, S.E. (University of London.)

OPEN SCHOLARSHIPS IN ARTS AND NATURAL SCIENCE.

The Examinations for these Scholarships will be held in the Library of the Medical School on July 24th, 25th and 26th. Entries close on July 24th. Entry forms and all particulars can be obtained from G. Q. ROBERTS, M.A.Oxon., Secretary.

Queen Charlotte's Lying-in HOSPITAL and MIDWIFERY TRAINING SCHOOL, Marylebone, N.W.

Medical Pupils admitted to the Practice of this Hospital. Unusual opportunities are afforded of seeing obstetrical complications and operative midwifery, about one-half the total admissions being primiparous ones. Certificates awarded as required by the various Examining Bodies.

Pupils trained for Midwives and Monthly Nurses. On being found competent, each pupil is awarded a Certificate of efficiency. Special preparation for examination for Central Midwives' Board. For rules, fees, &c., apply to

ARTHUR WATTS, Secretary.

The London School of Tropical

MEDICINE (under the auspices of His Majesty's Government), Connaught Road, Albert Dock, E. In connection with the Hospitals of the Seamen's Hospital Society.

SESSIONS COMMENCE 1st Oct., 15th Jan., and 1st May.—For prospectus, syllabus, and other particulars apply to the Secretary, P. MICHELL, Seamen's Hospital, Greenwich, S.E.

Medico-Psychological

ASSOCIATION OF GREAT BRITAIN and IRELAND.—The Examination for the Certificate in Psychological Medicine will be held at Bethlem Royal Hospital on July 3rd, at 10 a.m. The Examination for the Gaskell Prize will be held at Bethlem Royal Hospital on July 5th and 6th, at 10 a.m.—For further particulars apply to Dr. MILLER, Hatton Asylum, Warwick.

EDUCATION.-DAUGHTERS

of Medical men special terms. Excellent School Residential Pupils only. Illustrated Prospectus from PRINCIPAL, MARLBOROUGH COLLEGE, BUXTON, DERBYSHIRE.

OUR DAUGHTERS AS HOMEMAKERS.

Practical training in Housewifery, Cooking, etc. Certificates. Moderate fees.—PRINCIPAL, MARLBOROUGH COLLEGE, BUXTON, DERBYSHIRE.

Royal College of Surgeons of ENGLAND.

ELECTION OF AN EXAMINER IN DENTAL SURGERY.

Notice is hereby given that the Council, on the 26th proximo, will proceed to the Election of a Member of the Dental Section of the Board of Examiners in Dental Surgery in the vacancy occasioned by the expiration of the period of office of Mr. W. H. DOLANORE, who is eligible for re-election. Persons duly registered under the Dentists' Act of 1878, who are desirous of being appointed, must make application in writing to the Secretary on or before the 18th proximo.

S. FORREST COWELL, Secretary.

28th June, 1917.

Royal College of Surgeons of ENGLAND.

ELECTION TO THE COURT OF EXAMINERS.

Notice is hereby given that the Council, on the 26th proximo, will proceed to the Election from the Fellows of the College of a Member of the Court of Examiners in the vacancy occasioned by the retirement of Mr. L. A. DUNN, who does not offer himself for re-election.

Fellows of the College desirous of becoming candidates must make application in writing to the Secretary on or before the 18th proximo.

S. FORREST COWELL, Secretary.

28th June, 1917.

Scottish Women's Hospitals.

MEDICAL OFFICERS (women) Senior and Junior, required for Corsica. Work among Serbian refugees. Medical, surgical, maternity, and Tuberculosis. Salary £400 and £300 with board, uniform and travelling expenses.—Apply, PERSONNEL SECRETARY, S.W.H., 2, St. St. Andrew Square, Edinburgh.

Wanted, married Assistant
or LOCUM, suitable house at hand, free of rent or rates, for Yorkshire. Work light. Please state essential particulars as to age, qualification, &c. Suit a man no longer young.—Address, No. 2123, BRITISH MEDICAL JOURNAL Office, 429, Strand, W.C.2.

Wanted, fully qualified
MEDICAL OFFICER (male or female) to enter on duty at an early date. For particulars of appointment apply to Inspector of Poor, Eday, Kirkwall.

Assistant (ineligible) required
at once to reside at separate house in pleasant locality. Married or single. Little night work. No colliery. House, rates, coal, light, £25 per month.—Address, No. 2047, BRITISH MEDICAL JOURNAL Office, 429, Strand, W.C.2.

Assistant wanted, indoor,
country Practice. Work light. West Riding. York. No night work or midwifery. Partnership Share may be offered later. State essential particulars.—Address, No. 2119, BRITISH MEDICAL JOURNAL Office, 429, Strand, W.C.2.

Management of a small Prac-
tice in or near London is desired by a Doctor (ineligible) whose Practice he has recently disposed of, and would do some part time work pending. Middle-aged. Good refs. if required.—Address No. 2112, BRITISH MEDICAL JOURNAL Office, 429, Strand, London, W.C.2.

Dispenser and Book-keeper
wants situation, at present in London and disengaged. Experienced and capable.—Apply, C. c/o Mr. PERCIVAL TURNER, 4, Adam St., Strand, W.C.2.

Lady Dispenser.—Considerable
experience both private practice and institution. Book-keeping. Free for L.T. middle August. Permanency September.—Address, No. 2122, BRITISH MEDICAL JOURNAL Office, 429, Strand, W.C.2.

Exempted Medical Man
desires immediate ENGAGEMENT. Busy colliery experience, S. Wales and Lancashire, panel, etc. Busy practice preferred. Please state particulars and terms.—Address, W. JOHN, 59, Bickley Street, London, S.W.17.

Resident post in good-class
house, required by Lady Dispenser, qualified and experienced in town and country work. Book-keeping and full surgery routine. Locum or permanent. Good personal and working references.—Miss G. VICKRIDGE, "Rhonda," Worthing.

Officer, invalided, would act
as CHAUFFEUR to country doctor in return for board and lodging.—Address, No. 2101, BRITISH MEDICAL JOURNAL Office, 429, Strand, W.C.2.

Ship's Surgeon (ineligible for
Military Service.—Messrs. ELDER, DEMPSTER AND Co., Limited, have a few vacancies for Surgeons in their West African Service. Pay £15 per month. Fees allowed for attendance on passengers. Length of voyage varies from six to ten weeks, according to particular route.—Apply, Medical Superintendent, Messrs. ELDER, DEMPSTER & Co., Limited, Colonial House, Liverpool.

Ship Surgeoncy.—Surgeon
required for ship stationed off African Coast. 12 months' engagement. Salary £30 a month, all found.—Apply to J. C. NEEDES, 1, Adam Street, Adelphi, W.C.

Wanted Locum or Assistant-
SHIP by an Indian Graduate. Abstainer. Married. Experienced in vast private and panel practice. Free July 1st to August 7th, and August 29th to October 30th. References. State terms.—Address No. 2113, BRITISH MEDICAL JOURNAL Office, 429, Strand, W.C.2.

Locum Tenens.—No fee to
principals.—Mr. PERCIVAL TURNER has a large staff of trustworthy Locum Tenens and will be happy to send one at short notice.—Address, 4, Adam Street, Adelphi, London, W.C.2. Telegrams: "Epsomian, London." Telephone, Gerrard, 399.

Locum Tenens provided for
long or short periods.—PEACOCK & HADLEY are prepared to send reliable and capable gentlemen to take charge of town or country Practices at short notice.—Address, 19, Craven Street, Strand, London, W.C.2. Telephone: Central 1112.

Locum.—Medical man, well
qualified, experienced and received, requires Locum at seaside or country, with hospitality for wife and child, from July 25th for two weeks.—Address, No. 2111, BRITISH MEDICAL JOURNAL Office, 429, Strand, W.C.2.

LOCUM TENENS PROVIDED

at ONE hour's notice.—Apply

ARNOLD & SONS,

(J. E. ARNOLD, E. R. ARNOLD.)

Surgical Instrument Manufacturers,

TRANSFER DEPARTMENT,

6, GILTSPUR STREET, LONDON, E.C.

Telegrams: "Instruments, London." Telephone: 5240 City.

Locum Tenens (abstainer)

wanted early in July for three weeks in colliery Practice, South Wales. Dispenser kept. Ten guineas a week and expenses. Please give particulars and references.—Address, No. 2107, BRITISH MEDICAL JOURNAL Office, 429, Strand, W.C.2.

Locum Tenens wanted three

or four weeks in August. Light work. Pleasant London suburb.—Address, No. 2103, BRITISH MEDICAL JOURNAL Office, 429, Strand, W.C.2.

Locum Tenens wanted imme-

diately.—Mr. PERCIVAL TURNER has numerous vacancies in Town and Country, long and short engagements, for reliable Locum Tenens (ineligible for Military Service). Recent references required.—Apply (personally if possible), between 10 and 4, to 4, Adam Street, Adelphi, Strand, W.C.2.

Locum Tenens wanted at once

(ineligible for Military Service). Must have good references.—Apply (personally if possible), ARNOLD & SONS, Transfer Dept., 6, Giltspur Street, London, E.C. (opposite St. Bartholomew's Hospital).

Locum Tenens wanted for about

6 or 8 weeks in August and Sept. in a good class country Practice. Work very light; hardly any midwifery or night work. Beautiful locality with very bracing air. State age, qualifications, two recent references and other essential particulars.—Address, 2116, BRIT. MED. JOURNAL Office, 429, Strand, W.C.2.

Locum Tenency.—Wanted by

an experienced doubly qualified graduate for a few weeks in a first class Practice in North of England, Wales, or Scotland, preferably on Coast. Abstainer. Please state nature of work and terms.—Address, No. 2117, BRITISH MEDICAL JOURNAL Office, 429, Strand, W.C.2.

Locum for three weeks from

August 1st in Liverpool. Nice garden. Work light. State references and essential particulars.—Address, No. 2118, BRITISH MEDICAL JOURNAL Office, 429, Strand, W.C.2.

Locum Tenens wanted for a

fortnight after the first week of August. North Wales Coast. Work light.—Address, stating age, and essential particulars, No. 2121, BRITISH MEDICAL JOURNAL Office, 429, Strand, W.C.2.

As Locum.—Experienced

gentleman, over Military age, will undertake light work. Torquay or England, S.W. Own motor. 8 guineas.—Address, No. 2109, BRITISH MEDICAL JOURNAL Office, 429, Strand, W.C.2.

Experienced Locum, booking

from July 10th. Highest references. Locum in Liverpool, Southport, Manchester area, and with view to succession. Partnership, or purchase preferred.—Address, No. 2104, BRITISH MEDICAL JOURNAL Office, 429, Strand, W.C.2.

Medical Man (Ex-Lieut.

R.A.M.C.) desires LOCUM. Free now.—Address, No. 2114, BRITISH MEDICAL JOURNAL Office, 429, Strand, W.C.2.

War Locum wanted

immediately, for the duration of the War, in London munition area. Panel 1,200. Must be active and drive car.—Address, No. 2039, BRITISH MEDICAL JOURNAL Office, 429, Strand, W.C.2.

War Locum (ineligible) at

liberty for rest of war if necessary. References undesirable. Kindly state details and terms.—Address, No. 2120, BRITISH MEDICAL JOURNAL Office, 429, Strand, W.C.2.

Midland Town.—Over £800

a year. Old-established good middle-class PRACTICE in residential part of busy town, with hospitals, &c. Easily worked, hardly any night work. Panel 900. Visits 3s. 6d. to 10s. Good corner house. Great scope. Vendor leaving through ill health. Premium one year purchase. Personally investigated and recommended.—Apply, No. 6136, c/o Mr. PERCIVAL TURNER, 4, Adam St., Strand, W.C.2.

Lady doctor Locum Tenens

for Infant Consultation work wanted for July, August, and September. Salary 8 guineas per week.—Apply, Medical Officer of Health, Council House, Birmingham.

Wanted, Practices and

PARTNERSHIPS.—Messrs. ARNOLD & SONS, Surgical Instrument Manufacturers, are in urgent need of Practices and Partnerships for several of their clients who are anxious to settle down at once. Send full details, in confidence, ARNOLD & SONS, Transfer Department, Surgical Instrument Manufacturers, 6, Giltspur Street, London, E.C. (opposite St. Bartholomew's Hospital).

Wanted by M.B., B.C., a

PRACTICE of about £700 in nice country town with hospital or cottage hospital in the South of England. Now free to treat. Large house not required.—Apply, BLUNDELL & RIGBY, Walter House, 418/422, Strand, London, W.C.2.

Wanted immediately, a panel

and cash PRACTICE, producing not less than £750 per annum. Premium to be paid out of receipts. Can settle at once. Excellent references.—Send full details, in confidence, to Dr. "M." c/o ARNOLD & SONS, Transfer Dept., 6, Giltspur Street, London, E.C. (opposite St. Bart's Hospital.)

Wanted sound middle-class

PRACTICE in pleasant residential district in London or suburbs. Panel not objected to. Receipts £600 to £1,200 a year. Premium moderate. Purchaser can negotiate at once.—Apply, PEACOCK & HADLEY, 19, Craven Street, Strand, W.C.2. (No charge unless sale effected.)

Wanted a General Practice

within easy reach of London, and producing not less than £800 per annum. Must have good house and garden. Send full details to Dr. "H." c/o ARNOLD & SONS, Transfer Dept., 6, Giltspur Street, London, E.C. (opposite St. Bartholomew's Hospital).

For disposal, Practices or

PARTNERSHIPS.—Messrs. ARNOLD & SONS, Surgical Instrument Manufacturers, have been instructed to privately dispose of a large number of really good Practices and Partnerships. Gentlemen are requested to state their requirements and amount of capital available. No charge to purchasers.—Address, ARNOLD & SONS, Transfer Dept., 6, Giltspur Street, London, E.C. (opposite St. Bartholomew's Hospital).

For Sale.—A sound middle-

class suburban PRACTICE. Receipts £1,400. Panel 1,000. Vendor joining the R.A.M.C., will accept £1,250.—Address, No. 2105, BRITISH MEDICAL JOURNAL Office, 429, Strand, W.C.2.

For disposal.—A good Prac-

TICE is not always to be had directly, but Mr. PERCIVAL TURNER can generally offer applicants something suitable. Nearly all the best Practices are sold by him without being advertised.—Full information free on application to 4, Adam Street, Adelphi, Strand, W.C.2.

A medical man of Indian

nationality desires to dispose of his PRACTICE. Good panel, easily worked. Vendor willing to give a long introduction. An excellent opportunity for an Indian gentleman desirous of settling down in England.—Address, No. 2102, BRITISH MEDICAL JOURNAL Office, 429, Strand, W.C.2.

Isle of Wight.—Small Practice

about £380 p.a. Panel 350. Old-established. Practically unopposed. Boating, fishing, golf. Good house, garden, tennis; motor-house, £50 p.a. Premium £350.—Address, No. 1212, BRITISH MEDICAL JOURNAL Office, 429, Strand, W.C.2.

To Purchasers.—Do not buy

without a full investigation by an expert. Thirty-six years experience has given Mr. PERCIVAL TURNER an unique ability to advise in all cases. Terms free on application to 4, Adam Street, Strand, W.C.2. Telephone: Gerrard 399. Telegrams: "Epsomian, London."

To be given away for £50 an

old-established PRACTICE. Income about £200. Excellent modern corner house, with garage and garden. Rent £120, short lease. S.W. London. Very little work, suit man with appointment.—Address, No. 2032, BRITISH MEDICAL JOURNAL Office, 429, Strand, W.C.2.

Country Practice for sale.—

Beautiful district near sea. Good sport. Easy work. Small house, nice garden. Last two years over £300 a year. Terms: immediate purchase, or long Locum introduction with option of purchase. Moderate terms.—Address, No. 1715, BRITISH MEDICAL JOURNAL Office, 429, Strand, W.C.2.

Easy Terms.—London Suburb.

—Good general PRACTICE in western suburb returning £1,000 a year. No panel taken. Easily worked. Fees 2s. 6d. to 7s. 6d. Good corner house and garden. Vendor joining R.A.M.C. Any reasonable terms accepted. Apply No. 6156, c/o Mr. PERCIVAL TURNER, 4, Adam Street, Strand, W.C. 2.

Manchester Residential

Suburb.—Good and old-established PRACTICE for Sale, owner retiring. Nice house, with garage, &c.; rent £55. Receipts about £950 per annum, with excellent scope. Selected panel. Six months' introduction. Price £500, part by instalments.—MANCHESTER MEDICAL AND SCHOLASTIC ASSOCIATION, 8, King Street.

East Anglia.—Very old

unopposed PRACTICE in pleasant agricultural district on line of rail, returning £650 a year. Very safe investment. Small house. Rent £35 with garden. Panel about £300 a year. Good introduction. Price about one year's purchase, half down.—Apply, No. 6153, c/o Mr. PERCIVAL TURNER, 4, Adam Street, Strand, W.C. 2.

Yorkshire.—Wanted qualified

ASSISTANT in small town for War period (ineligible), under 45, outdoor. General Practice and panel. Able to drive a Ford car or cycle. Salary £150.—Address, No. 2012, BRITISH MEDICAL JOURNAL Office, 429, Strand, W.C.

Panel Practice £800 a year in

London. Vendor joining R.A.M.C. No midwifery; can be worked as a lock-up. Ample scope for private practice.—Apply, No. 6154, c/o Mr. PERCIVAL TURNER, 4, Adam Street, Strand, W.C. 2.

Practice wanted, London,

S.W. or W., middle-class with panel. Good house, moderate rent. Returns required, about £600 to £1,000.—Address No. 2110, BRITISH MEDICAL JOURNAL Office, 429, Strand, W.C. 2.

Kent.—Urgent. £500 a year.

Easy terms. Unopposed, in good residential district. Easily worked. Rail close.—No. 6064, c/o Mr. PERCIVAL TURNER, 4, Adam Street, Strand, W.C. 2.

Death Vacancy.—In the best

position of a leading North Country Hospital Town, a good general PRACTICE, of late including a principal proportion of ophthalmic work. Receipts upwards of £900.—Apply, J. A. REASIDK, The Medical Agency, Watergate House, Adelphi, W.C.

Required in or near

Bournemouth, a General PRACTICE with Panel, and producing not less than £750 per annum. Free to settle at once. Send full details in confidence to Dr. "P.", c/o ARNOLD & SONS, Transfer Dept., 6, Giltspur Street, London, E.C. (opposite St. Bartholomew's Hospital.)

Death Vacancy. — £3,000 a

year PARTNERSHIP. Owing to death on active service of junior partner, Half-share of old-established Practice in residential and manufacturing town in Midlands is for immediate disposal. Hospital in town. Practice increasing yearly. Expenses very moderate. Panel about 500. Visits 2s. 6d. to 21s. Good house available.—Apply to No. 6131, c/o Mr. PERCIVAL TURNER, 4, Adam Street, Strand, W.C. 2.

A South Country General

Practitioner is desirous of considering applications for a PARTNERSHIP in his old-established and easily-worked Practice, mostly private, but some good appointments. Very pleasant and prosperous agricultural Hospital town.—Address, No. 2106, BRITISH MEDICAL JOURNAL Office, 429, Strand, W.C. 2.

Messrs. BEDFORD & CO.

(J. T. BEDFORD and C. E. BEDFORD),
Surveyors, Auctioneers, and Estate Agents,
10, WIGMORE STREET,
CAVENDISH SQUARE, W. 1.
**SPECIALISTS IN PROFESSIONAL
HOUSES AND CONSULTING ROOMS
IN HARLEY STREET AND LEADING MEDICAL POSITIONS**
No charge to purchasers or tenants. Properties registered free of charge. Valuations for Probate and other purposes.
Telephone: 2412 Paddington.

Established 1845.**ELLIOTT, SON & BOYTON,**

(J. Boyton, P. H. Winter, H. H. Holt & H. E. Allpress.)
Estate Agents, Auctioneers & Surveyors,
6, VERE STREET, CAVENDISH SQUARE, W. 1.
are the BEST LOCAL AGENTS for HOUSES and
CONSULTING ROOMS in the Harley, Wimpole,
Queen Anne, and other Streets in the Cavendish
Square district. Valuations for all purposes.
TELEPHONE: 2408 Mayfair.

FOR SALE BY PRIVATE TREATY.**Crown House, Lord Street,**

Southport.—Offers to buy this Eligible Mansion and grounds are invited. The Site contains about 5,500 square yards, and is freehold and free from Chief Rent and from restrictive covenants. The property is suitable for Private Residence, Private Hotel, Hydro, or Boarding School. It is fitted with electric light throughout, and contains a splendid billiard-room, modernised stables with roomy cottage, garage with pit, and productive garden. Separate entrance to back premises.—Further particulars and orders to view may be obtained from Mr. THOMAS PHILLIPS, House & Estate Agent, 26A, Houghton Street, Southport, or from Messrs. BUCK, COCKSHOTT & COCKSHOTT, Solicitors, Southport.

Garage, 17, Harley Mews S.,

Wigmore Street, W.
CARS STORED FOR ANY PERIOD.
Special attention to Owner-Drivers.
Leading Makes of British, French and American
Tyres. Petrol, Oils, and Sundries supplied.
TOM NORTON, LTD., 40, Maddox Street, W.

Hanover Square, W.—

CONSULTING ROOM with use of waiting room, bedroom if desired. Most suitable for Anaesthetist.—Address, Dentist, No. 2017, BRITISH MEDICAL JOURNAL Office, 429, Strand, W.C. 2.

House to Let on Lease,

39, WEYMOUTH STREET, Harley Street, London, W. 1. Suitable for Specialist. Rent £150 per annum, up to recently occupied by medical man. For orders to view or further particulars, apply to Mr. PHILCHARD, Estate Offices, 7, Beak Street, Regent Street, W. 1., or Telephone 1070 Gerrard.

Consult HUGH P. McCONNELL,

Automobile Engineer and Advisory Expert, 199, Piccadilly, London, W. 1, when about to Purchase or Sell a Motor Car. 15 years practical experience. Examinations and reports. Specialist on repairs. References to satisfied customers in Medical profession. Telephone: Gerrard 1960. One minute from Piccadilly Circus.

Bowls.—50/- Association Set

Lawn Bowls, 4 pairs superior full-size selected lignum, medium bias, complete with two jacks in strong box, unused, price 25s. 6d.; also 2 pairs finest Standard Match Bowls, 3 bias, absolutely accurate bias, officially tested and stamped by Bowling Association, price 11s. 6d. pair, or lot for 49s. 6d.; new condition. Approval.—GILYARD, Darley Street, Bradford.

Tennis.—£2/2/- Set rigid

square polished Ash Standards with ground plates, powerful fixing screws and brass net winder, unused 29s. 6d.; 21s. strong Waterproof Net, bound canvas, 14s. 6d.; three excellent 12s. 6d. racquets, splendidly strung, 7s. 6d. each; 12 best new Club Balls, 7s. 6d. lot for 65s. 6d.; worth 85s. New condition. Approval.—GILYARD, Darley Street, Bradford.

R. A.M.C. and Naval Appointments.—Service

DRESS and COMPLETE EQUIPMENT can be supplied to medical men who have obtained Commissions in the R.A.M.C. and Navy in 24 hours by Messrs. HARRY HALL. Unequalled value, perfect fit, and accuracy in every detail is guaranteed. Innumerable unsolicited appreciations have been received from satisfied officers. Patterns, abridged Price List, and if desired a simple self measurement form, post free on application to Messrs. HARRY HALL, 207, Oxford St., W., or 149, Cheapside, E.C. **IMPORTANT.—Visitors to London can order and be fitted the same day.**

'Phones: Museum 820 and City 2088. Telegrams: "Hallzone," London, and "Arriarie," London.

Microscope for sale, Leitz.,

1", $\frac{3}{4}$ ", and $\frac{1}{2}$ " oil immersion, in case.—Address, No. 2108, BRITISH MEDICAL JOURNAL Office, 429, Strand, W.C. 2.

X-Ray and Electro-Medical

APPARATUS, also ELECTRIC HEATING and COOKING APPLIANCES, including Hot Plates for Laboratory use, for Sale at very greatly reduced prices.—Write for particulars, ISKENTHAL & Co., Ltd., Denzil Works, Willesden, N.W. 10.

Doctors' A/c Forms printed

in best style—250, 6s.; 500, 8s. 6d.; 1,000, 13s. 6d. Letter heads, Post Card heads, Calling Cards, &c., at equally moderate rates.—R. ANDERSON & SON, Printers, 1, Hill Place, Edinburgh. Tel. 6034 Central. DOCTOR'S TESTIMONIALS printed or typed for all posts, best work, quick dispatch. 30 yrs' speciality.

Newcastle Eye Infirmary.

Wanted, a Non-resident HOUSE SURGEON. Commencing salary £140 a year. Out-patients last year 13,000; In-patients 490. Applications, with copies of not more than three testimonials, to be sent to the Secretary.

National Hospital and

UNIVERSITY COLLEGE SCHOOL OF MASSAGE AND ELECTRICAL TREATMENT, Queen Square, W.C. 1.

(In connection with University College Hospital, Gower Street, W.C., and the National Hospital for the Paralyzed and Epileptic, Queen Square, W.C. 1.)

Wanted, a woman as HEAD OF THE SCHOOL, to commence her duties not later than September 1st. Salary £200 a year with board and lodging. It is expected that the School Session will start early in October, and the Curriculum includes the teaching of Massage, Remedial Exercises and Medical Electricity.

Applications, stating age and qualifications, accompanied by not more than three recent testimonials, should be addressed, on or before July 14th, to the Secretary, National Hospital, Queen Square, W.C. 1.

Coventry and Warwickshire

HOSPITAL, Coventry. 335 Beds.
(185 of which are for wounded soldiers.)
Special Eye, Ear, Nose and Throat, and X-Ray Depts.
(Three Resident Medical Officers).

Applications are invited for appointment of HOUSE PHYSICIAN, with some surgical duties (3rd Resident). Salary £250 per annum, with rooms in the Hospital, board, washing and attendance. Candidates must be duly qualified and registered, and ineligible for Military Service.

Applications, stating age and enclosing copies of testimonials, to be addressed to the undersigned.
(Miss) R. HOOPER, Assist. Secretary.
Board Room, 26th June, 1917.

City of York.

TEMPORARY TUBERCULOSIS OFFICER.

The York City Council invite applications for the post of Temporary Tuberculosis Officer from persons experienced in the diagnosis and treatment of Tuberculosis. Applications from persons of either sex will be considered, but male applicants must be ineligible for Military Service. The candidate appointed must devote whole time to the work. Salary at the rate of £300 per annum, the appointment to be terminable at two calendar months' notice.

Applications (stating when available) and accompanied by copies of three recent testimonials should be delivered not later than the 10th July, 1917, to
PERCY J. SPALDING,
Guildhall, York. Town Clerk.

Burton-on-Trent Infirmary.

HOUSE SURGEON.

The Committee require the services of a duly qualified RESIDENT HOUSE SURGEON. 102 beds, half Military, half civilian. Salary £250 per annum, with comfortable rooms, board, coal, and light. Duties to commence about the middle of July.

Applications, stating age and experience, and accompanied by copies of testimonials, should be sent at once to the Hon. Secretary, Mr. JOHN WOOD, The Infirmary, Burton-on-Trent.

The Belgrave Hospital for

CHILDREN, Clapham Road, S.W.

RESIDENT MEDICAL OFFICER. This appointment is now vacant. Applicants must be fully qualified and registered. The appointment is for six months, with board, residence, and washing provided. Salary at the rate of £75 per annum. Applications, with copies of testimonials, should be forwarded as soon as possible to the undersigned from whom further particulars may be obtained.
ALFRED J. SMALL, Acting Secretary.

Royal Victoria and West

HANTS HOSPITAL, Bournemouth.
Boscombe Branch (including 246 Beds for Military Patients).

RESIDENT MEDICAL OFFICER required to commence duty August or September. Salary £300, with board, lodging, and washing. Candidates (ineligible for Military Service) must be registered and hold a Medical and Surgical qualification. Applications, with copies of testimonials, stating age and nationality to be sent to
GORDON M. SAUL, Secretary.
Ashley Road, Bournemouth.

Townleys Military Hospital,

Farnworth, near Bolton.

Wanted, LADY ASSISTANT MEDICAL OFFICER. Salary £383 5s. per annum, with ration and apartments. Apply, stating age, medical qualifications, date of registration, and previous experience, together with copies of not more than three recent testimonials not later than 13th July, 1917, to
MAJOR R. B. SIDEBOTTOM, Officer-in-Charge,
Townley's Military Hospital,
Farnworth, near Bolton.

APPOINTMENTS.—Important Notice.

(a)—British Islands.

Medical Practitioners are requested not to apply for any appointment referred to in the following table without having first communicated with the Medical Secretary of the British Medical Association, 429, Strand, London, W.C. 2.

Town or District.	Town or District.	Town or District.
CONTRACT ENGLAND.	PRACTICE, WALES.	WALES (continued).
—COVENTRY. (As regards Dispensary Appointments.)	ADERTILLERY. (Colliery Appointment.)	GARW VALLEY. (Medical Aid Society.)
FOREST OF DEAN. (Medical Aid Associations.)	BLAINA. (Blaina and District Medical Aid Association.)	LLWYNPIA, GLAMORGAN. (Colliery Appointments.)
NOTTINGHAMSHIRE. (All Colliery Appointments.)	CWMTILLERY AND ROSE HEYWORTH. (Collieries Workmen's Medical Fund.)	OAKDALE, MON. (Medical Officer for Model Village and Cottage Hospital.)
WORCESTER. (Amalgamated Friendly Societies' Medical Association.)	EASTERN VALLEYS, MONMOUTHSHIRE. (Workmen's Medical Association.)	RISCA, YNYSDDU and CWMPELINFACH. (Colliery Appointments.)

(b)—Colonial.

Medical Practitioners are requested not to apply for any appointment referred to in the following table without having first communicated with the Honorary Secretary of the Division or Branch named in the second column, or with the Medical Secretary of the British Medical Association, 429, Strand, London, W.C. 2.

Town or District.	Hon. Sec. of Division or Branch.	Town or District.	Hon. Sec. of Division or Branch.	Town or District.	Hon. Sec. of Division or Branch.
NEW SOUTH WALES. (All Friendly Society and Education Department Appointments as Medical Officers, &c.)	Dr. R. H. TODD, (Hon. Sec., New South Wales Branch), B.M.A. Building, 30-34, Elizabeth Street, Sydney, N.S.W.	QUEENSLAND. (Brisbane Associated Friendly Societies and Australian Natives Association.)	Dr. J. CAMERON HEMSLEY (Acting Hon. Sec., Queensland Branch), Whickham Terrace, Brisbane.	VICTORIA. (All Friendly Society Lodge Appointments.)	Dr. J. W. DUNBAR HOOPER (Hon. Asst. Sec., Victorian Branch), 2, Collins Street, Melbourne, Victoria.
		SOUTH AUSTRALIA. (Friendly Societies' Dispensaries.)	Dr. A. CAMPBELL MAGAREY (Acting Hon. Sec., South Australian Branch), North Terrace, Adelaide, South Australia.	WELLINGTON, NEW ZEALAND. (Friendly Society Lodge Appointments.)	Dr. H. E. GIBBS (Hon. Sec., New Zealand Branch), 123, Willis Street, Wellington, New Zealand.

Address: 429, Strand, W.C. 2.

June 27th, 1917.

By order of the Council of the British Medical Association.

ALFRED COX, Medical Secretary.



Bristol Royal Infirmary.

Applications are invited for appointments of **HOUSE PHYSICIAN** and **HOUSE SURGEON**.

The appointments will be made subject to the terms and conditions of the War Office Scheme for granting commissions in the R.A.M.C. for which the successful candidates will be eligible.

Applications also considered from those ineligible for military service.

Salary at the rate of £120 per annum with board, apartments and laundry.

Candidates must possess registered medical and surgical qualifications.

For all particulars and conditions governing these appointments apply to the undersigned, to whom applications, accompanied by copies of testimonials, should be sent immediately.

W. E. BUDGETT,

19th Feb., 1917. Secretary & House Governor.

Wanted, a fully qualified

RESIDENT MEDICAL OFFICER in a **MILITARY HOSPITAL**. Unfit for Army. Not over 50 years of age. Good surgeon and anesthetist. £200 and "all found."

Apply, Secretary, Crag Head Hospital, Manor Road, Bournemouth.

Manchester Children's

HOSPITAL, Pendlebury, near Manchester. (188 beds).

Wanted, **TWO RESIDENT MEDICAL OFFICERS** (ladies) who will be appointed for six or twelve months from 1st August. Candidates must be unmarried, doubly qualified and duly registered. Salary at the rate of £200 per annum, including war bonus.

Applications, stating age, and accompanied by copies of testimonials, to be sent to the undersigned at the Hospital, Pendlebury, near Manchester, at once.

By order, W. M. HUMPHRY,

June 18th, 1917. Secretary.

Leicestershire Education COMMITTEE.

ASSISTANT SCHOOL MEDICAL OFFICERS (TEMPORARY).

The Education Committee invite applications for the appointment of two temporary whole-time Assistant School Medical Officers (either male or female, but male applicants must be ineligible for Military Service), to carry out the Medical Inspection of Children in the County of Leicester, under the direction of the Chief School Medical Officer.

Applicants should have some special experience in Diseases of Children, and state in their application what experience (if any) they have had in Refractions.

The salary will be at the rate of £350 per annum together with travelling expenses.

Application forms and terms of appointment can be obtained from the undersigned, by whom applications must be received, together with copies of not more than three recent testimonials, not later than first post on the 6th July, 1917.

T. ROBINSON,

Chief School Medical Officer.

17, Friar Lane, Leicester.

West Herts Hospital

(50 Civil and 50 Military Beds), Hemel Hempstead, Herts (24 miles from Euston).

Wanted, a **LADY RESIDENT MEDICAL OFFICER** to commence duties in July. Salary £200. Rooms, board, and washing found.

Particulars to be obtained of, and applications, with copy recent testimonials, to be sent to,

ROBT. L. BUTTERFIELD,

Clerk to the Hospital.

Resident House Physician.—

Applications are invited for this post; salary at the rate of £200 per annum with usual allowances. The appointment will be made for six months. Selected candidates will be communicated with.—Apply, with copies of three recent testimonials, to the SECRETARY, HAMPSTEAD GENERAL HOSPITAL, Haverstock Hill.

The Gloucestershire Royal INFIRMARY AND EYE INSTITUTION.

(140 Beds.)

ASSISTANT HOUSE SURGEON. Salary £150 per annum, with board, residence and laundry.

Candidates must be registered, and possess a Medical and Surgical qualification.

Applications, with testimonials, to be forwarded to the Secretary on or before Wednesday, the 4th July.

The elected candidate will be required to enter upon duty at once.

HENRY P. PIKE, Secretary.
Gloucester, June 21st, 1917.

South Devon and East CORNWALL HOSPITAL, Plymouth. (189 beds).

The Committee invite applications for the appointment of a qualified **HOUSE PHYSICIAN**, male (ineligible for military service) or female. No age limit. To commence duties on 15th July. Salary £200, with board, residence, and washing. Candidates should send copies of not more than three testimonials to P. J. LANGDON, Secretary.

Plymouth, 1st June, 1917.

Queen Charlotte's Lying-in HOSPITAL, Marylebone Road, N.W.

ASSISTANT RESIDENT MEDICAL OFFICER, Male (ineligible for Military Service) or Female, required. Applicants must be registered. The appointment is for four months. The selected candidate will be expected to proceed to the appointment of Senior Resident Medical Officer (also for four months) at the end of the term of office on the recommendation of the Medical Staff. The salary of the Assistant Resident Medical Officer is at the rate of £60 per annum, with board, residence, and washing. Applications, with copies (not originals) of not more than three testimonials, will be received by the Secretary up to July 4th.

Canvassing is prohibited. Duties to commence on 1st August, 1917.

ARTHUR WATTS, Secretary.

County Borough of Sunderland**TEMPORARY TUBERCULOSIS MEDICAL OFFICER.**

In the absence of the Tuberculosis Officer on military service applications are invited for the appointment of a Temporary Tuberculosis Medical Officer (male or female), at a salary at the rate of £500 per annum.

The person appointed must be a registered Medical Practitioner, and must devote whole time to the duties of the office, and if a male must be ineligible for military service.

Preference will be given to those who have had special practical experience in the treatment of Tuberculosis at a Sanatorium or otherwise. Experience in the use of Tuberculin, and of other special treatment, is important.

The Officer appointed will have charge of the Tuberculosis Dispensary, and the general arrangements for the provision of Tuberculosis treatment thereat, and at the Tuberculosis Pavilion at the Borough Sanatorium. He must be prepared to act as expert adviser of the Borough Insurance Committee in regard to the diagnosis and treatment of cases of Tuberculosis.

Canvassing, directly or indirectly, until after the first selection of candidates by the Committee will disqualify.

Applications, stating age, qualifications, and previous experience, accompanied by copies of not more than three recent testimonials (which will not be returned), to be forwarded to the undersigned not later than 10th July, 1917, endorsed "Tuberculosis Officer."

NOTE.—A sum of £50 per annum is at present being paid to the Officer in respect of treatment of County patients in addition to the salary mentioned.

H. CRAVEN, Town Clerk.

Town Hall, Sunderland, 23rd June, 1917.

The South London Hospital for WOMEN, South Side, Clapham Common, S.W. 4.

The Board of Management invite applications from fully qualified Medical women for the posts of HOUSE PHYSICIAN and HOUSE SURGEON.

Appointments for a period of six months respectively, to date from August 1st.

Salaries at the rate of £100 per annum respectively, with board, residence and laundry.

Applications, with copies of testimonials, to reach the Secretary, at the Hospital, not later than the first post on July 9th.

Nottingham General Hospital.

Wanted a Holiday LOCUM TENENS (Medical woman) from 18th of July to 28th of August, 1917, inclusive. Salary at the rate of £250 per annum, with board and residence in the Hospital. Candidates are required to send testimonials, with particulars as to age, qualifications, and experience, to the Secretary, from whom any further information may be obtained. Applications must be delivered not later than the 5th of July.

By order, E. M. KEELY, Secretary.

Parish of Portsmouth.

FIRST ASSISTANT MEDICAL OFFICER (Male, ineligible for Military Service, or Female).

The Guardians of the above-named Parish invite applications for the appointment of a First Assistant Medical Officer for the Workhouse Infirmary, Workhouse and Children's Home.

The appointment will be subject to one month's notice on either side to the approval of the Local Government Board, and to the provisions of the Poor Law Officers' Superannuation Act, 1896.

Candidates must possess the qualifications required by the orders of the Local Government Board.

Salary £250 per annum, together with furnished apartments, rations, and all other allowances.

Applications to be made on printed forms, which may be obtained at this Office, accompanied by not more than three recent testimonials, and must be returned by Tuesday, 10th July, 1917.

Selected candidates will have notice to attend, and third-class railway fare and reasonable personal expenses will be allowed.

(By Order) E. H. MITCHELL, Clerk.

Guardians' Offices, 1, St. Michael's Road, Portsmouth, 22nd June, 1917

Manchester Union.

Wanted at once, at NELL LANE MILITARY HOSPITAL, West Didsbury, Manchester (3,500 beds), a LOCUM ASSISTANT RESIDENT MEDICAL OFFICER at a salary of £7 7s. per week, together with board, residence, &c. Must be ineligible for Military Service.

Applications, stating age and qualifications, and accompanied by copies of recent testimonials (not exceeding six in number) should be sent at once to the undersigned, endorsed "Assistant Resident Medical Officer."

By Order, JAMES MACDONALD,

Union Offices, Clerk to the Guardians, All Saints, Manchester, 25th June, 1917.

West Ham Union.**OUT-RELIEF DISTRIBUTOR AND DISPENSER.**

The Guardians invite applications for the above appointment (Male or Female) for the period of the War at their Central Relief Station, Cumberland Road, Plaistow, E. 13.

The person appointed must be competent to distribute the grocery stores, keep the various books of account relating thereto, and perform the necessary dispensing on the prescriptions of the District Medical Officers.

Assistance will be provided.

The salary will be after the rate of £2 per week.

Forms, upon which application must be made, and full particulars as to the duties of the office, can be obtained at the Guardians' Offices, Union Road, Leytonstone, E 11, or will be forwarded on receipt of a stamped, addressed, foolscap envelope, and must be returned by 10 a.m. on the 10th July, 1917.

Darlington General Hospital.

Required Immediately, fully qualified HOUSE SURGEON, either male or female.

Salary £200 per annum, with residence, board and laundry.

Applications, with recent testimonials, to be sent to the Secretary, ARTHUR F. CREEK, 16, Greendank Crescent, Darlington.

Wolverhampton and Midland COUNTIES EYE INFIRMARY.

HOUSE SURGEON wanted on 29th August, accustomed to administer Anesthetics and preferably with a knowledge of Refraction. Candidates must be ineligible for Military Service. There are 56 beds for In-Patients (20 of which are reserved for Military cases), and a large Out-Patient Department.

Salary £150, with furnished apartments, board and laundry.

Applications, with copies of three recent testimonials, should reach me not later than 14th July next.

ARTHUR M. MANBY, Secretary Pro. tem, The Eye Infirmary, Wolverhampton, 27th June, 1917.

The Royal Infirmary, Sheffield. (353 Beds, of which 133 are Military).**HOUSE PHYSICIAN.**

Wanted, a Resident Medical Officer, male or female (ineligible for Military Service) for the above post.

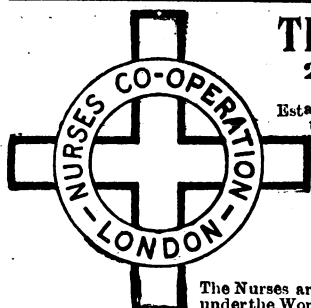
The person appointed, who must be fully qualified, will have charge of the Medical Beds under the supervision of the Honorary Medical Staff. Salary £120 per annum, with board and residence.

Applications, with copies of recent testimonials, to be addressed to me immediately.

By order, JNO. W. BARNES, Secretary.

THE LONDON TEMPERANCE**NURSES CO-OPERATION**

Telephone: 2202 MAYFAIR. Telegrams "NURSLONTEM, BAKER, LONDON." 18, ADAM STREET, PORTMAN SQUARE, LONDON, W.
Supplies Fully Trained Hospital Nurses, also MENTAL AND MALE NURSES.
Nurses Insured against Accident. TERMS FROM £2 2s. to £3 3s. APPLY SECRETARY.

**THE NURSES' CO-OPERATION,**

22, Langham Street, Portland Place, W.

FOUNDED 1891. INCORPORATED 1894.

Established to secure to Nurses the full remuneration for their work and to supply

FULLY-TRAINED HOSPITAL

MEDICAL
SURGICAL
MENTAL
MATERNITY
FEVER
CHILDREN'S
MASSAGE

NURSES

To work under medical supervision.

The Nurses are fully insured by the Co-operation against the Employers Liability under the Workmen's Compensation Act, 1906.—Miss HOADLEY, Lady Superintendent.
Telegraphic Address: "Aprons, London." Telephone 6742 and 6743 Mayfair.

MENTAL NURSES

(MALE and FEMALE)

Telephone: MAYFAIR 2287.

Telegrams:

"ISOLATION, LONDON."

NURSES FULLY INSURED AGAINST ACCIDENT.

ASSOCIATION, Ltd.

54, George Street, Manchester Sq., W.

Superior Mental Nurses (Male and Female) supplied at a moment's notice Day or Night for Nerve and Mental Cases.

Apply SECRETARY.

Salford Union.

UNION INFIRMARY, Hope, Pendleton, near Manchester.
ASSISTANT RESIDENT MEDICAL OFFICER (Female).

The Guardians invite applications for this appointment. Candidates to be registered under the Medical Acts, and to possess a Medical and Surgical qualification. Salary £250 per annum, with furnished apartments, attendance, and rations in the Infirmary. The appointment will be subject to the sanction of the Local Government Board, and will be made in the first instance for one year, the lady appointed being required to devote the whole of her time to the performance of the duties. The Infirmary is used partially for Military patients. Applications, stating qualifications and experience, and accompanied by copies of not more than three testimonials of recent date, must reach me as early as possible.

Canvassing the Guardians will disqualify.

By order, E. H. INCHLEY, Clerk to the Guardians, Poor Law Offices, Eccles New Road, Salford, 11th June, 1917.

County Borough of Stoke-on-TRENT.**ASSISTANT LADY MEDICAL OFFICER.**

Applications are invited for the position of Assistant Lady Medical Officer in connection with the Maternity and Child Welfare Work, etc., in the Borough. Salary £350 per annum. Particulars as to the duties and the conditions of the appointment may be obtained on application to the Medical Officer of Health, St. Peter's Chambers, Glebe Street, Stoke-on-Trent. Applications, endorsed "Assistant Lady Medical Officer," and accompanied by copies of three recent testimonials, to be delivered to me not later than 12 noon on Tuesday, July 10th, 1917.

E. B. SHARPLEY, Town Clerk, Town Hall, Stoke-on-Trent, June 28th, 1917.

Aberdeen Royal Asylum.

TEMPORARY ASSISTANT PHYSICIAN wanted during War for the Royal Asylum, Aberdeen. Salary from £250 to £350 a year, according to experience, with board and lodging. Apply, giving references, and with copies of testimonials, to the Medical Superintendent.

Royal Victoria Hospital,

Folkestone.

A vacancy occurs for a Male or Female RESIDENT MEDICAL OFFICER. Salary £200 per annum, with board and laundry. Hospital has 114 beds, of which 64 are allotted to the Military. Applications to Secretary.

FOR MENTAL, NERVE, AND MEDICAL NURSES.

THE MISSES STRONGWICK'S NURSING AGENCY,
55, Great Marlborough Street, Regent Street,
London, W. 1.

The Agency for supplying Experienced Nurses
for Mental, Nerve, and Medical Cases.

Terms from 21/-.

We have now a specially efficient staff of Female
Nurses; and we give the most careful consideration to
suitability and knowledge when sending supplies.

Selected highly recommended Homes for Mental
Patients. Particulars on application.

Established over 15 years. Phone: Central 8686.

ARMY & NAVY MALE NURSES CO-OPERATION.

Patroness: HER MAJESTY, QUEEN ALEXANDRA.

This Society supplies fully-trained Medical,
Surgical or Mental Male Nurses, Valet-Attendants
and Masseurs of unquestionable character, who have
been thoroughly trained in the Naval and Military
Hospitals.

Address: SECRETARY, 11A, Welbeck St., London, W.
Tel: Restoring, London. TYN: 255, Mayfair.

THE MENTAL NURSES' CO-OPERATION,

49, Norfolk Square, Hyde Park, London, W. Y.

Telephone: ESTAB. 1907. Telegraphic Address:
6533 Paddington. Nursental, London.

Fully trained and experienced Nurses for MENTAL,
NERVOUS, and MASSAGE CASES supplied
immediately. All nurses insured under the
Employers' Liability Act of 1906.

Apply to Miss JEAN HASTIE, Superintendent.

Telephone: PADDINGTON 2437.
Telegrams: "ASSISTIAMO, LONDON."

For

MENTAL NURSES

Male or Female.

We now have a thoroughly efficient Female
Staff, chosen with the same care as are our Male
Nurses, both in reference to their knowledge of
nursing, and their suitability for private work.
(Mrs.) MILLICENT HICKS, Superintendent
W. J. HICKS, Secretary.

THE NURSES' ASSOCIATION (In conjunction with the MALE NURSES' ASSOCIATION),

29, York Street, Baker Street, London, W.

GENERAL J. MANDEVILLE PLACE, Manchester Square, W.

Established 1862, at Henrietta Street, Covent Garden.
Thoroughly experienced Hospital-trained NURSES
supplied at a moment's notice being

Residents in the Home. Also
Specially trained NURSES for Mental Cases worked
under the system of Co-operation. Apply to the
SUPERINTENDENT.

Telephone: Mayfair 115. **ASSOCIATION**
Telegraphic Address: "Nutrix Wesdo, London."

Telephone: Mayfair 7070.
Telegrams: Firths Association, London.

THE LONDON ASSOCIATION OF NURSES.

123, NEW BOND STREET, W.

Hospital Trained Nurses, experienced in
Private Nursing, supplied for every kind
of illness. Also Mental and Male Nurses.
Apply, LADY SUPERINTENDENT.

ST. JOHN'S HOUSE.

Trained and experienced Medical, Surgical,
Maternity, NURSES and MASSEUSES can be
obtained by application, personally or by letter, to
the Sister Superior, 12, Queen Square, Bloomsbury.
Telephone No. 5099 Central (P.O.).

Telegraphic Address: Private Nurses, London.

MILDMAY NURSING INSTITUTION, 8 & 10, NEWINGTON GREEN, N.

Fully-trained NURSES for Medical, Surgical,
Maternity, and Fever Cases to be had immediately
on application to the Superintendent.

Telegraphic Address: "Nursing, London."
Telephone No. 141 Dalston.

ST. LUKE'S HOSPITAL.

TRAINED NURSES for Mental and
Nervous Cases can be had immediately.

Apply to LADY SUPERINTENDENT,

19, Nottingham Place, London, W

Telephone: "Mayfair 5420."

THE RETREAT, YORK.

TRAINED NURSES' DEPARTMENT,
Staffed by Nurses who have been trained for four years
in the Retreat, and conducted upon a profit-sharing
basis. Mental and Nervous cases only undertaken.
Terms from Two-and-a-half to Three Guineas weekly.
Apply, MATRON, Retreat, York. Nat. Tel. 112.

London Hospital Private

NURSING STAFF.—TRAINED NURSES
for Adults and Children for Medical, Surgical,
Maternity, or Massage Cases can be had immediately.
Apply Matron, London Hospital, Whitechapel.
Telephone: No. 5020 Avenue.

The nurses on the private staff return to the
wards between their cases after sufficient rest, so
that their work and knowledge are kept thoroughly
up to date.

BLUNDELL & RIGBY, Walter House, 418-422, Strand, W.C. 2.

(Entrance Bedford Street.)

Telephone: 7148 GERRARD.

Cable Address: (via Eastern) "RECALLABLE,
LONDON."

LOCUMS SUPPLIED.

Hants.—Unopposed Practice

in beautiful district. Receipts £1,100,
including £700 from resident patients. Trans-
ferable connection.

North London.—Middle-class

PRACTICE. Receipts over £800 with great
scope for active man. Panel 600. Few mid-
wifery. Cottage hospital. Good house, rent £55.

Yorks (West Riding).—Old-

established PRACTICE of £1,400 in pros-
perous district surrounded by open country.
Panel 1,500. Good house. Premium £200 down
and instalments.

War Sale.—Mixed Practice

in good town in Hants. Receipts £1,100.
Panel 1,200. Separate surgery for panel, &c.
Appointments £60. No night work or Sunday
work, and midwifery refused. Good house and
garden. Rent £50. Prem. payable on easy terms.

Yachting centre.—Practice

of £1,000 normal, £1,500 during the War.
Premium only £750, £200 down. Appointments
and panel £250. House has nice garden, tennis
court, 5 bed rooms, bath room, etc. Rent £50.

Within 120 miles.—Very old

established PRACTICE in nice country
town. Receipts £1,300. Appointments £200.
Panel 650. Consulting room, surgery, 2 recep-
tion, 6 bedrooms, good garden. Rent £40.
School, society, hunting, golf. Station. Cottage
hospital. Illness cause of sale. Premium 1
year's purchase, part deferred.

Dorset.—Unopposed Practice

in country district. Receipts £288, could be
doubled. Good house and garden. Rent £38.
Premium only £200.

Purchasers stating their requirements can have
Particulars of other Practices not advertised.

LEE & MARTIN LTD.,

THE BIRMINGHAM MEDICAL AGENCY
93, HALL ROAD, HANDSWORTH, BIRMINGHAM

TELEGRAMS: "Locum, Birmingham." TELEPHONE:
"Locum, Birmingham." 191, Northern, Bham.

Transfers of Practices and Partnerships arranged
Accounts Investigated & Income-tax Returns prepared
"LOCUMS" AND ASSISTANTS SUPPLIED.

Established 1860.

MR. HERBERT NEEDES,

Regent 4838. 199, PICCADILLY, W.

For List of Practices and Partnerships
see last and next week's issue.

TEMPERANCE ASSOCIATION OF MALE NURSES LTD.

24, NOTTINGHAM STREET, Nottingham Place, LONDON, W.

Telegrams: "GENTLEST, LONDON."

Superior Trained Nurses (Male and Female) for Medical, Surgical, Mental, Travelling, and all Cases. Nurses reside on the premises, and are always ready
for urgent calls, day or night.

TERMS £2 2/- to £3 3/-

Telephone: 5969 MAYFAIR.

M. J. QUINLAN, Secretary.

TEMPERANCE

MALE NURSES LTD

CO-OPERATION.

TELEGRAMS:
Tactear, London.
Tactear, Manchester.
Surgical, Glasgow.
Tactear, Dublin.

TELEPHONES:
London, 1277 Mayfair
Manchester, 5213 Central.
Glasgow, 477 Central.
Dublin, 531 Ballsbridge

Superior trained Male Nurses for Medical, Surgical, Mental, Dipsomania, Travelling and all cases. Nurses reside on the premises, and are
always ready for urgent calls, Day or Night. Skilled Masseurs and good Valet Attendants supplied. All Nurses insured against accident.
Terms from £1 16 6.

M. D. GOLD, Secretary.

LONDON: 43, NEW CAVENDISH STREET, W.
MANCHESTER: 176, OXFORD ROAD.
GLASGOW: 28, WINDSOR TERRACE.
DUBLIN: 47, MESPIL ROAD.



THE SCHOLASTIC, CLERICAL AND MEDICAL ASSOCIATION, LIMITED

(ESTABLISHED IN 1880 BY MR. G. B. STOCKER.)

22, CRAVEN STREET, TRAFALGAR SQUARE, W.C. 2.

Telegraphic Address, "TRIFORM, WESTRAND, LONDON." Telephone No. 1854 (GERRARD).

A Pamphlet relating to the MEDICAL DEPARTMENT, with the names of the DIRECTORS and the MEDICAL ADVISING BOARD, and terms, will be sent post free on application to the General Manager, Mr. A. V. STOREY.

PRACTICES FOR SALE.

- (1) KENT.—Sound middle-class PRACTICE of £1,400 in pleasant outlying Suburb. Panel 1,000. Premium £1,250.
- (2) N. MIDLANDS.—Unopposed Country PRACTICE of about £600. Panel 500. Old Manor house, with garden and paddock (5 acres). Premium 1 year's purchase. Excellent prospects.
- (3) MANCHESTER.—Old-established good middle-class PRACTICE of £1,600. No Panel. Premium £1,000.
- (4) LONDON, S.E.—Outlying Suburb. Very compact sound PRACTICE of over £1,700 in main residential thoroughfare. Panel 1,845. Premium £1,200.
- (5) NURSING HOME.—S.W. Postal District North of Thames. Well-estab. Receipts 1916, £1,100 (working expenses £400). Inclusive prem. £250.
- (6) CHESHIRE.—Residential Country Town. Practice of about £500. Panel 450. Not much mid. Excellent house. Prem. £500. Decided scope.
- (7) Excellent opportunity offers to a Surgeon to acquire a SHARE in non-dispensing Practice in first-rate residential county town.
- (8) LONDON, N.E.—Sound, transferable (chiefly ready money) PRACTICE of about £500 in populous district. £300 from panel. Premium £350.
- (9) CORNWALL.—Unopposed country PRACTICE of about £750. Good house and fields of 14 acres. Rent £35. Premium £800.
- (10) LONDON, W.—PRACTICE of about £800 p.a. in residential suburban district. Panel over 1,500.
- (11) HOME COUNTY.—Country PRACTICE in beautiful district. Receipts nearly £550, including £225 from panel. Premium £220.
- (12) MID-DEVON.—Unop. country PRACTICE of £600 (inc. over £200 from panel and appts.). Steadily increasing. Small com. house. Prem. £500.
- (13) LONDON, S.E.—Lucrative PRACTICE of £1,250 (chiefly cash and pan.) in outlying suburb. Pan. over 2,400. Very little night work. Prem. £950.
- (14) MIDDLESEX.—PRACTICE of £630 p.a. in rapidly developing district. Panel 1,000. Premium one year's purchase, on easy terms.
- (15) LONDON, W.C.—Cash PRACTICE about £800 p.a. No mids. Panel 1,000, steadily increasing. Prem. one year's purchase. Great scope.
- (16) MIDLANDS.—DEATH VACANCY. PRACTICE of about £1,000 p.a. (half from panel) in Country Town. Excellent prospects.
- (17) NORFOLK.—Country Town, with good up-to-date Cottage Hospital. PRACTICE of over £1,300. Premium one year's purchase.
- (18) LANC.—Few miles from Coast. Country Town PRACTICE of nearly £1,000 p.a. Fees 5s. to £1 1s. Panel 600. Easy terms of purchase.
- (19) N. DEVON.—Country PRACTICE of over £500 p.a. Comfortable roomy house. Rent £32.
- (20) LANC.—Bright Manufac. Town. Old-estab. good-class PRACTICE. Recs. 1916, £1,637. No panel. Pleasant house, residential district. Prem. £800.
- (21) ESSEX.—Middle and working-class PRACTICE in populous Suburban district. Receipts £1,250. Panel about 1,000. Premium £950.

Numerous other Practices, full details of which will be sent gratis on application.

NO CHARGE TO PURCHASERS. ASSISTANTS AND LOCUM TENENS SUPPLIED. ARBITRATIONS, &c.
RESIDENT PATIENTS INTRODUCED.

MALE NURSES

TEMPERANCE CO-OPERATION LTD.



London — 10, THAYER STREET, MANCHESTER SQUARE, W.
Birmingham — 75, HAGLEY ROAD.
Manchester — 237, BRUNSWICK STREET (Facing Owens College).
Edinburgh — 7, TORPHICHEN STREET.

Trained Male Nurses and Valet Attendants for Mental, Medical, Travelling, and all cases.

TERMS from £2 2/- to £3 3/-.

W. WALSH, Secretary.

All Nurses fully Insured against Accidents.

Telegrams { "Assuaged, London."
"Assuaged, Birmingham."
"Assuaged, Manchester."
"Assuaged, Edinburgh." }

Telephones { (London): 538 Paddington.
(Birmingham): 2106 Midland.
(Manchester): 4699 Central.
(Edinburgh): 2715 Central. }

DR. J. FIELD HALL,

(FIELDHALL LIMITED)
MEDICAL TRANSFER AGENT,
12, Craven Street, Strand, W.C. 2.
Telephone: 4667 GERRARD.
Telegrams: "FIELDHALL, WESTRAND-LONDON."

1. LONDON, EAST.—PANEL PRACTICE producing over £750 per annum. Private practice in addition worth about £200. Could easily be worked as a "Lock-up." Eight-roomed house: rent £50. Premium £750, payable £300 cash, and balance by arrangement.
2. MIDDLESEX.—Well-established PRACTICE in growing town. Present income £630, with prospect of large increase in immediate future. Slight opposition, and very low expenses. Convenient and well-situated house. Premium one year's purchase. Reasonable terms of payment.
3. PARTNERSHIP in good mixed PRACTICE, situated in residential suburb of North London. A One-third Share offered, with option to purchase up to one-half later. The income for 1916 amounted to nearly £2,000. Panel of about 1,400. Very light expenses. Lowest fee 1s. 6d. Small convenient house, with 4 bedrooms, garden. Rent £35. Premium one year's purchase, part by arrangement.
4. PARTNERSHIP in rapidly increasing better working-class Practice, situated in outlying suburb of London East. A One-third or One-half Share for disposal. Income about £2,700. Panel of well over 2,000. Choice of houses at rents from £40-£50 p.a. Part of premium can be paid by instalments.
5. DORSET.—Old established unopposed PRACTICE, in favourite locality. Income well over £900. Visits 2s. 6d. to 7s. 6d. Large house and garden: rent £60. Sport of all kinds. Premium one year's purchase.
6. DEVON.—Small unopposed PRACTICE, in charming seaside resort. Income about £300. Good house, with 2 reception, 10 bedrooms; good garden: rent £35. Very suitable for resident patients. Premium £100.
7. WITHIN 100 MILES OF LONDON.—UNOPPOSED Village PRACTICE. Very easily worked. Income last year £830. Good house, with every modern convenience. Rent £32. Premium £800.
8. DEVONSHIRE.—A HALF-SHARE PARTNERSHIP is offered in an old established Practice situated in a good residential town. Income £1,400. Panel of over 1,500. Suitable house available.

MR. J. C. NEEDES,

(P. W. Needes. F. B. Needes)

Medical Partnership and Conveyancing Agency,
1, ADAM STREET, ADELPHI, W.C. 2.
Telegrams: "Acquirement, London."
Telephone: Gerrard 3543.

This Agency (which has been established and conducted at the above address since 1875) undertakes the Sale of Practices, the Introduction of Partners, Valuations, Investigations on behalf of Purchasers, the supply of trustworthy Locum Tenens and Assistants, and every other description of Medical Agency business.

N.B.—No charge made to purchasers.

1. PARTNERSHIP.—An active gentleman can succeed to the Third Share of a large panel and middle-class Practice worth about £1,000 a year, situated in an important town in the S.W. of England. Further particulars on application.
2. PARTNERSHIP.—HOME COUNTY.—Partner required in old-established Practice worth £1,500 to £1,600 a year (including Union and 1,250 panel patients) in a pleasant country town. Patients all classes from paupers to people of title. Minimum visiting fees 3s. 35 Midwifery cases yearly. Third Share for sale to commence with. Premium 1 year's purchase.
3. LONDON (within a mile of Oxford Street).—Good-class PRACTICE without mid., estimated to be worth at least £1,500 a year, including several influential appts. believed to be transferable. Rent £100. Premium £1,000. Successor should have some knowledge of the French language.
4. INDIA.—Season PRACTICE (April to Oct.) in Hill Station and Health Resort. Cash receipts for last season over £1,400. Excell. climate, good society, games and sport of every kind. Consultations 12s. 6d., visits £1 1s. No dispensing. Prem. £600.
5. WITHIN 15 miles of London, old-established PRACTICE about £1,000 a year, including two good (transferable) appointments, and 600 panel patients. Visits 3s. 6d. to £1 1s. Midwifery discouraged, only about 25 cases yearly at 3 guineas and upwards. Excellent detached house, with large garden, tennis lawn, garage, &c. Opposition weak. Fast train service. Premium £800.
6. WEST MIDLANDS.—In an extremely pretty district within 10 miles of a county town, a very old-established country PRACTICE averaging £750 p.a., including union and panel. No opposition within 4 miles. Excellent house, every convenience (Gas, &c.), large garden, &c. Premium £850. Ill-health sole cause for disposal.

Apply to J. C. NEEDES, 1, Adam St., Adelphi, W.C. 2.

THE MANCHESTER CLERICAL, MEDICAL AND SCHOLASTIC ASSOCIATION, LTD.

The oldest MEDICAL Agency in Manchester.

8, KING STREET.

Telegraphic Address: "STUDENT, MANCHESTER."
TRANSFERS and PARTNERSHIPS arranged, and Investigations, Valuations, &c., undertaken.
ASSISTANTS & LOCUM TENENS SUPPLIED.
PRACTICES for sale. Particulars on application.

PEACOCK & HADLEY,

(ESTABLISHED 1868).

MEDICAL TRANSFER AGENTS,
19, Craven Street, Strand, W.C. 2.

Telegrams: Herbaria, Westrand—London.

Telephone: Central 1112.

LOCUM TENENS (reliable and capable gentlemen) provided at short notice for Town or Country.
Particulars of Practices and Partnerships for Sale sent on application.

ESTABLISHED 1873.

MR. PERCIVAL TURNER,

4, ADAM STREET, STRAND, LONDON, W.C. 2.

Telegrams: "Epsomian, London."

Telephone: Gerrard 399.

After Office Hours—Epsom 685.

Every description of AGENCY and ACCOUNTANCY work undertaken.

FOR DISPOSAL several PRACTICES and PARTNERSHIPS in town and country. Full details free to applicants on stating their requirements.

COVERS FOR BINDING Vols. I. & II. of the BRITISH MEDICAL JOURNAL for 1915 and 1916 can be had, price 2s.; by parcel post 2s. 4d. each. Remittances must accompany all orders. Apply at the office, 428, Strand, W.C.

THE FRENCH NATURAL MINERAL WATER. VICHY-CÉLESTINS



Property of the
FRENCH GOVERNMENT

**DISORDERS OF THE LIVER,
GOUT,
DIABETES, RHEUMATISM.
GRAVEL, &c.**

VICHY-ETAT PASTILLES

Two or three Pastilles after each meal facilitate digestion.

CAUTION.—Each bottle from the STATE SPRINGS bears a neck label with the word "VICHY-ETAT" and the name of the Wholesale Agents:—

INGRAM & ROYLE, Limited,
Bangor Wharf, 45, Belvedere Road, London, S.E.
AND AT LIVERPOOL AND BRISTOL.

ALLIANCE DRUG AND CHEMICAL CO.

34, Leadenhall St., London, E.C.
Established 1812—Reorganised 1902.

The Company specializes in providing the Medical profession at the **lowest possible** inclusive prices (no charge for Bottles, &c., or Cases, &c.) with pure and reliable Drugs, Chemicals, Pharmaceutical Preparations, Compressed Tablets, Pills, Surgical Dressings, and Stock Mixtures of approved Formulae as used by the London and other Hospitals. We append a few sample prices for guidance of the great saving that can be effected, and in many instances our Clients have written us stating we have saved them

40 per cent.

of their usual Yearly Account for Drugs. This saving is not reflected in the quality of our Goods, but is primarily due to not employing **TRAVELLERS**, thus saving the purchaser the cost of the Travellers' Salaries and expenses which greatly enhance the prices the usual Drug Houses have to charge.

NOTE.—Only Terms Net Cash with order without discount, or orders received through London Merchants or Bankers. Goods carriage forward. All packages free. Export cases extra.

**OUR DETAILED PRICE LIST
WILL BE SENT ON RECEIPT
OF A PROFESSIONAL CARD.**

INFUSIONS CONCENTRATED. 1-7 in 6lb. Bottles.

Aurant @ 1/10 lb.	Gentian @ 1/4 lb.
Aurant Co. @ 1/8 lb.	Rhei @ 1/10 lb.
Columbae @ 1/3 lb.	Senega @ 2/8 lb.
Cinchon Acid @ 1/11 lb.	
Lassars Paste, 14 lbs. @ 1/5 lb.; 1 lb. @ 1/8 lb.	
*Lin. Belladon. Meth., 5 lbs. @ 8/8; 1 lb. @ 9/- lb.	
*Liq. Ether Nitros (Sp. Ether Nit. Substitute)	
7 lb. @ 2/1 lb.	
*Liq. Ammon. Acet. Conc. (1-7), 6 lb. @ 1/4 lb.	
Aromat., 6 lbs. @ 11d. lb.	
Morph. Hydrochlor. P.B., 1 oz. @ 16/- oz.	
Petroleum Jelly Flav. P.B., 7 lbs. @ 7½d. lb.	

PILLS TASTELESS COATED.

Potass. Iodid. P.B., 3 lbs. @ 13/3 per lb.
Soda Sulphas Feathery cryst., 7 lbs. @ 3d. lb.
Sp. Ether Nit. P.B., 4½ lbs. @ 4/9 lb.; 1 lb. @ 5/2.
Sp. Ammon. Aromat. P.B., 5 lbs. @ 4/- lb.
Syr. Cascara Aromat. P.B., 6 lbs. @ 2/- lb.
Glycero-Phosph. Co., 6 lbs. @ 2/8 lb.

SYRUPS.

Aurant, P.B., 7 lbs. @ 1/1 lb.
Easton, B.P., 7 lbs. @ 1/3½ lb.
Ferri Iodid. P.B., 7 lbs. @ 1/7½ lb.
Ferri Phosph. Co., 7 lbs. @ 8d. lb.
Hypophosph. Co., B.P.C., 7 lbs. @ 1/1½
Pruni Virg., B.P., 8 lbs. @ 10d. lb.
Rhamni, 7 lbs. @ 1/1 lb.
Rhei, P.B., 7 lbs. @ 11d. lb.
Scilla, P.B., 7 lbs. @ 7½d. lb.
Senna, P.B., 7 lbs. @ 1/- lb.
Tolut, P.B., 7 lbs. @ 10½d. lb.

TABLETS COMPRESSED.

Bland's (Sugar-Coated), gr. 5	Per 1,000
Nitroglycerini, P.B., gr. 1-50th...	4/3
Perchloride of Mercury (Coloured) ...	3/10
One Tablet in 1 pint of Water is	12/6
equivalent to 1-1000.	
Thyroid Gland, gr. 5	9/8

We endeavour to adhere to prices quoted, but as same fluctuate from day to day, they must be considered as subject to change without notice.

*TINCTURES. In 5-lb. Bottles.

B.P. Aquos.	B.P. Aquos.
Belladon ... 5/1 1/10	Hyoscyam... 4/9 2/-
Benzoïn ... 5/1 —	Nucis Vom. 3/10 1/4
Camph. Co. 3/5 1/5	Opil... 6/7 5/-
Card. Co. ... 2/9½ 1/1	Quin.Amon. 3/8 —
Gentian Co. 2/7 1/1	Rhei Co. ... 2/7 1/1
Ung. Acid Boric Flav., 28 lb. pail @ 8d. lb.	
" Hydarg. P.B., 7 lbs. @ 3/8 lb.; 1 lb., 3/10	
" Icthamolis B.P.C., 7 lbs. @ 4/3 lb.	
" Zinci Ox. P.B., 7 lbs @ 1/8 lb.	
Vin. Ipecac. P.B., 5 lbs @ 2/3 lb.	

*Minimum quantity at these prices: Home Trade 3, Export 12 Winchester Quarts assorted.

ERGOAPIOL

(Smith)

For
**AMENORRHEA
DYSMENORRHEA
MENORRHAGIA
METRORRHAGIA
ETC.**

ERGOAPIOL (Smith) is supplied only in packages containing twenty capsules.

DOSE: One to two capsules three or four times a day.

SAMPLES and LITERATURE SENT ON REQUEST.

MARTIN H. SMITH COMPANY, New York, N.Y., U.S.A.
SOLE BRITISH AGENTS:
T. CHRISTY & CO., OLD SWAN LANE, LONDON, E.C.

“BACTEROL”

THE MOST EFFICIENT ANTISEPTIC AND GERMICIDE.

Non-Toxic, Non-Irritating, Non-Staining, Non-Corrosive, Non-Greasy, Deodorant.

IN SURGERY & MEDICINE, USE THE MEDICAL TYPE.

“BACTEROL” (Medical) is a preparation based upon infusions of Eucalyptus and Alpine Peppermint, combined with Formaldehyde and Iodine, and prepared and modified by special processes at a high temperature.

“BACTEROL” is a perfectly stable and neutral product of a non-poisonous, non-caustic, non-corrosive, and non-irritating character. It promotes granulation, and its use quickly produces perfect asepsis. “BACTEROL” is in a class by itself, and can be used in every condition. It unites the advantages of all antiseptics, bactericides, and deodorants in current use, but is entirely free from their objections, while it possesses many advantages entirely its own.

Owing to its high concentration, “BACTEROL” is very economical in use, and when working with solutions of 1 in 1,000 or 1 in 500 its cost is almost negligible.

ISSUED in 2-oz. bottles - price 2/3

“ 4-OZ. ” - “ 4/- ”

IN HOUSEHOLD & SICK-ROOM, USE THE GENERAL TYPE.

“BACTEROL” (General) effectively sterilizes surgical instruments without detriment to their edge or polish. It has no injurious effect upon vulcanite, horn, rubber, or in fact any substance. It sterilizes the hands of Surgeons, Nurses, &c., without roughening the skin.

Owing to its non-poisonous and other advantageous characteristics, “BACTEROL” may be freely employed with great benefit in cases where the use of ordinary disinfectants is highly objectionable; being non-corrosive and non-irritating, it may be advantageously used in the sick-room for the patient's bathing and washing operations, the disinfection of linen, dressings, bowls, &c.

For Institutional use “BACTEROL” (General) is ideal. It is a “favourite” with Nurses as it does not roughen the skin.

ISSUED in 10-oz. bottles - price 2/-

“ 40-OZ. ” - “ 6/- ”

Samples and Literature on Application.

Manufactured by Bacterol Ltd., London, N.

MENLEY & JAMES Ltd., MANUFACTURING CHEMISTS, Menley House, Farringdon Road, London, E.C.



Gamage Tyres

Give you **MOST MILES AT LEAST COST.**
TIP-TOP QUALITY

GAMAGE TYRES.

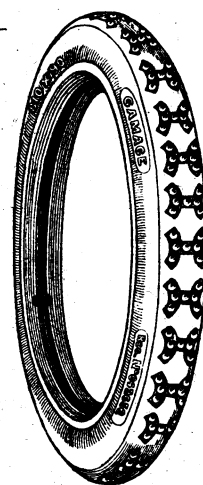
Size.	Ribbed Square Tread.	Steel-studded Non-skid.	TUBES.
650 x 65 mm.	£ s. d. 1 16 0	£ s. d. 2 18 6	s. d. 11 0
700 x 80 mm.	—	—	—
700 x 85 mm.	2 1 3	3 13 0	—
710 x 90 mm.	3 0 3	4 1 6	17 3
760 x 90 mm.	3 5 9	4 7 3	18 0
810 x 90 mm.	3 8 3	4 14 0	19 6
815 x 105 mm.	4 16 0	6 6 9	27 3
875 x 105 mm.	5 3 6	6 16 0	28 3
760 x 100 mm.	3 19 3	5 7 6	22 6
810 x 100 mm.	4 5 3	5 18 9	24 0
765 x 105 mm.	4 10 0	5 18 0	25 0
815 x 120 mm.	6 2 0	7 6 9	—
820 x 120 mm.	5 14 9	7 0 9	31 9
880 x 120 mm.	6 4 3	7 13 3	34 6
820 x 135 mm.	6 10 6	8 15 9	—
920 x 120 mm.	—	8 0 9	30 0
895 x 135 mm.	7 0 3	9 18 0	38 3
935 x 135 mm.	7 8 0	10 8 0	41 0

GAMAGE TYRES TO FIT FORD CARS.

30 x 3 inches... ..	2 5 0	3 17 6	14 3
30 x 3½ ”	3 12 6	4 16 3	20 3

All Makes of Tyres in Stock: Dunlop, Goodrich, Michelin, &c. If disappointed elsewhere, come to Gamage's.

A. W. GAMAGE, Ltd., Holborn, London, E.C.



Gamage's New Pattern Non-skid Cover—Combination Rubber and Steel Studs.

**“Going to Re-Tire?
Try GAMAGES.”**

In Convalescence from

Wounds,
Operations,
Nerve-shock,
Enteric Fever,
Dysentery,

prescribe

ANGIER'S EMULSION



In this remedy you have an agent that will heal intestinal lesions, correct perverted metabolic action, promote absorption, assimilation, nutrition, and restore tone to all the digestive functions. The creation of appetite and the return of normal digestion is quickly brought about by its regular use.

The Emulsion is particularly useful where convalescence is retarded by minor nerve complications. Under its use, patients suffer less from sleeplessness, are less inclined to be low spirited or melancholic, and general progress is more satisfactory.

An absolutely perfect Emulsion, it is presented in a form pleasing to the taste and acceptable to the most fastidious. Moreover, its good effects are accomplished in a safe and natural manner without entailing extra work upon the weak or overburdened system.

~~~~~  
**FREE SAMPLES TO THE MEDICAL PROFESSION.**  
~~~~~

THE ANGIER CHEMICAL CO., Limited,
86, CLERKENWELL ROAD, LONDON, E.C.