

SCHALL & SON

(W. E. SCHALL, B.Sc. Lond.)

Established 1887.

The oldest established firm devoted solely
to Electro-medical and X-ray Apparatus.
BRITISH PROPRIETARY. BRITISH CAPITAL.

THE ILLUSTRATION SHOWS A

NEW PORTABLE DIATHERMY APPARATUS

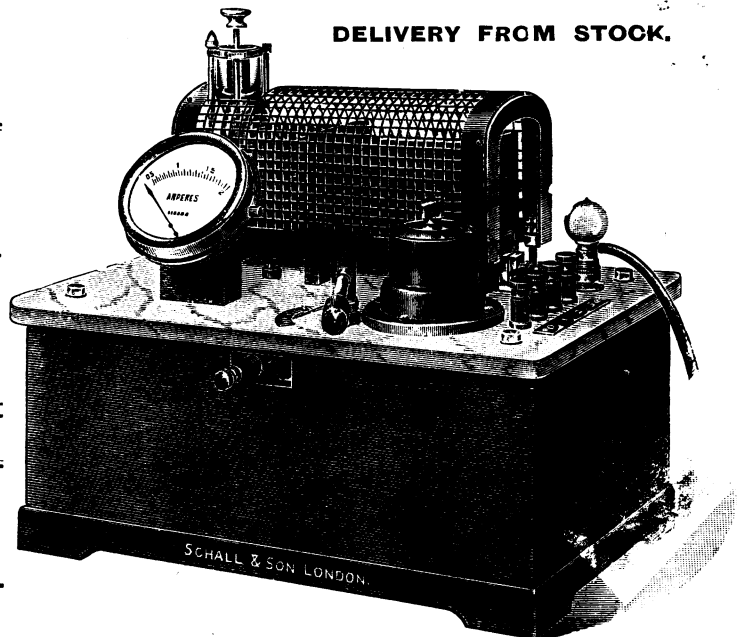
(REGISTERED DESIGN)

for Cold Cautery in Ear, Nose, Throat
and Bladder, and Local Diathermy.

THE "PANTOSTAT"

(EARTH FREE UNIVERSAL APPARATUS)
AND

ALL OTHER TYPES OF ELECTRO-MEDICAL
AND X-RAY APPARATUS.



DELIVERY FROM STOCK.

Manufactured throughout in our Works on the Premises—

71/75, NEW CAVENDISH STREET, LONDON, W. 1.

A large Illustrated Catalogue will be sent free to any Medical Man desiring it.

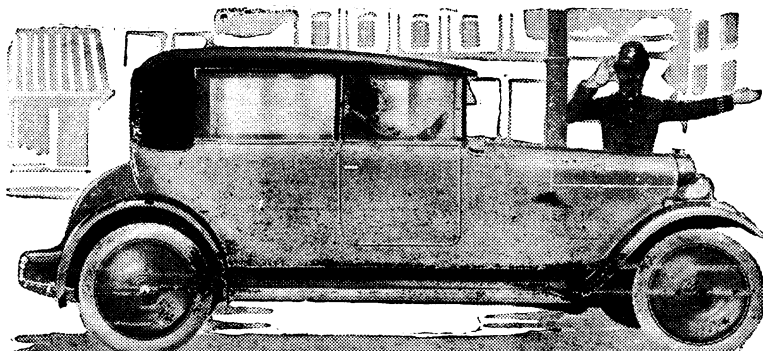
**Why the Medical Man
picks the**

Austin



There's a reason for the popularity of the "Austin Twenty", amongst medical men. The very nature of their profession demands that the car they use should be absolutely reliable. Although this applies to all motor car users, the word reliability has a special meaning to a practitioner. In short the meaning which is interpreted by the unfailing and unfaltering service which the "Austin Twenty" gives.

There is a model which might have been exclusively designed for the medical man—the four-seater Coupé. The comfort of its enclosed drive, its ample leg space, and the luxurious and lounging ease of its seating and interior appointment, renders it a car in which cramp or fatigue is absolutely unknown.



The AUSTIN Motor Co., Ltd.
Head Office: Northfield, BIRMINGHAM.

Telephone: King's Norton 230. Telegrams: "Speedily, Northfield."
LONDON - 479-483, Oxford Street, W. 1.
MANCHESTER - 130, Deansgate.
And at LIANCOURT and BRUSSELS.