

Heat vs. Cold

IN PNEUMONIA

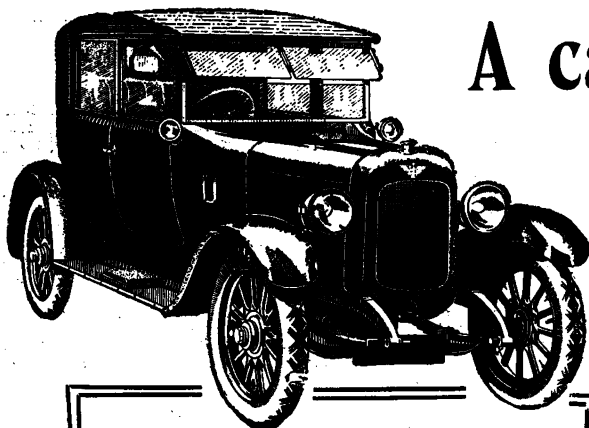
The application of cold packs to the thoracic wall as a remedial agent in the treatment of pneumonia is rapidly being discarded by practitioners.

The application of heat is again in favor and physicians in every part of the country are now convinced that the logical, safe and sane method of treating pneumonia includes the application of prolonged moist heat over the entire thoracic wall.

Antiphlogistine
TRADE MARK

not only offers the best known method of continuously applying moist heat of equable temperature for a long period, together with the advantages attendant upon its physical properties, hygroscoy, exosmosis and endosmosis, but it offers the pneumonic patient exactly what he absolutely requires—EASE and REST. When Antiphlogistine is once applied it can advantageously remain in place for a long period, usually from twelve to twenty-four hours, all the time performing its soothing and effective service.

THE DENVER CHEMICAL M'FG COMPANY, LONDON, E. 3.



A car for all round the Year—

The comfort of the "Austin Twenty" Coupe Model, its beauty of bodywork and the reliable and economically running engine, render this deservedly popular car ideal for professional purposes. The "Austin Twelve" is a lighter car, produced with the same careful attention to sound workmanship and high quality. 1922 models are now available at 1922 prices.

£850
at Works.

Payment by instalments can be arranged if desired. Write in first instance to Dept. HS.

THE AUSTIN MOTOR CO., Ltd.
Head Office: **NORTHFIELD, BIRMINGHAM.**
LONDON: - - - 479-483, Oxford Street, W. 1.
MANCHESTER: - - - 130, Deansgate.
And at **BRUSSELS and LIANCOURT.**



Austin
"Twelve" &
"Twenty"