

The *Austin* "Twelve" & "Twenty"

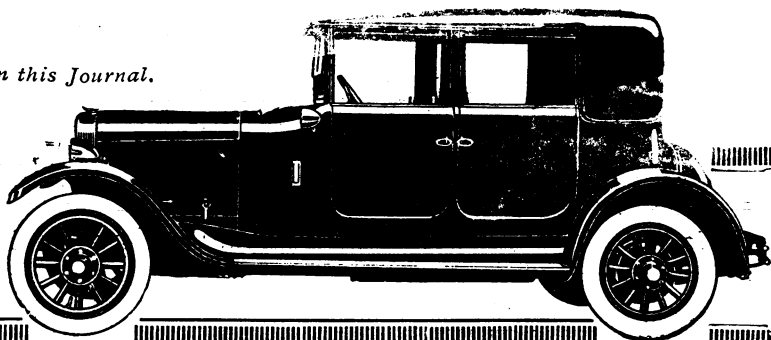
Has the Doctor come?

This question is soon answered when the doctor has an "Austin Twelve" or an "Austin Twelve" Coupé. Either does the doctor every credit. They are started in a moment by electricity, they are swift, and their silent arrival does not disturb the patient. They are ready and reliable and built to last.

Get Catalogues 252 and 253. Mention this Journal.



£925 AT WORKS
"The Ranelagh"
Four Door Coupé



THE AUSTIN MOTOR CO., Ltd.
Head Office: NORTHFIELD, BIRMINGHAM.
LONDON: - - - 479-483, Oxford Street, W. 1.
MANCHESTER: - - - 130, Deansgate.
And at LIANCOURT and BRUSSELS.

SALT & SON, LTD.

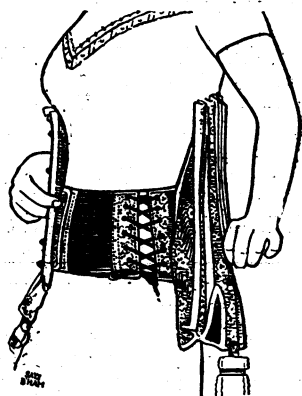
(Head Offices): 7, CHERRY STREET
BIRMINGHAM.

Orthopædic Appliance Specialists. Artificial Limb Manufacturers.

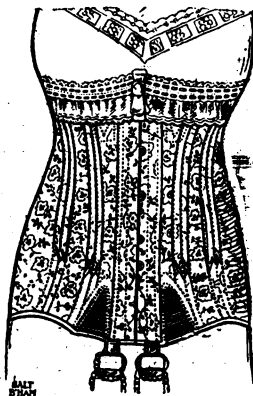
SALT'S NEW ENTEROPTOSIS CORSET

(REGISTERED No. 677466).

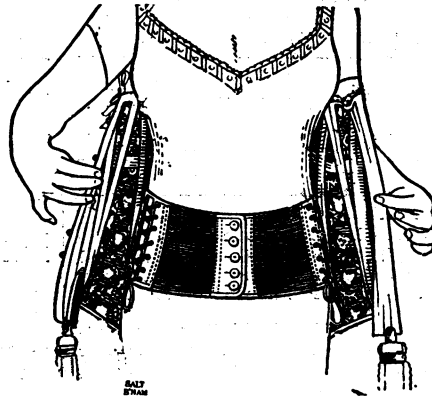
Write for Particulars and Measurement Forms.



Side view with Belt fastened.



Corset finally fastened.
Belt in Position under Corsets.



Front view with Belt fastened.

SEND FOR PARTICULARS OF—

SALT'S PATENT GASTROPTOSIS BELT.
SALT'S PATENT VARUS BOOT.
SALT'S PATENT KIDNEY BELT, &c., &c.

LONDON CONSULTING
ROOMS:
14-18, BLOOMSBURY ST.
W.C. Museum
3845
Fully qualified Nurse in
attendance.
BY APPOINTMENT ONLY.