

---

**CARBON THERAPY****NORIT CHARCOAL**

**Is an activated Vegetable Charcoal  
—— for Medicinal purposes. ——**

**SPECIFICATION.** Guaranteed to contain on the dry substance at least 95 per cent. of pure ashless highly adsorptive free carbon. Adsorptive power 10 times to 70 times that of Commercial P. Carbo Lig. B.P. according to the purpose for which it is used.

**INDICATION.** An excellent adsorptive in gastric and intestinal affections:—diarrhoea, distension, hyperacidity, ptomaine poisoning, cholera, dysentery, typhoid, etc.

An effective dressing for suppurating wounds, ulcers, and infected mucous surfaces; it adsorbs purulent discharges, and is a powerful deodorant.

In Tablet form has a salutary effect upon the mouth and throat.

**PACKAGES.** Cartons containing ten 5 gram powders, price 2/6. Bottles containing 50 grams for use as a dusting powder, price 2/11. Tablets — Bottles of a hundred 5 grain tablets, price 2/11. Bottles of twenty 5 grain tablets, price 1/-.

Supplies of NORIT may be obtained from the numerous branches of *BOOTS The CHEMISTS.*

*SAMPLES AND DESCRIPTIVE LITERATURE FREE ON REQUEST.*

**BOOTS PURE DRUG COMPANY LTD.,**

MANUFACTURING CHEMISTS AND  
MAKERS OF FINE CHEMICALS,

**STATION STREET ————— NOTTINGHAM.**

---

# British Medical Journal.

JUNE 24TH, 1922.

## CONTENTS.

### ORIGINAL ARTICLES.

**The Duodenal Tube in the Diagnosis and Treatment of Biliary Diseases.** By JONATHAN MEAKINS, M.D., F.R.C.P.E. .... 983

**An Address on the Spread, Probable Mode of Infection, and Prophylaxis of Leprosy.** By Sir LEONARD ROGERS, M.D., F.R.C.P., F.R.S., I.M.S.(ret.)... 987

**Acute Inflammation of a Large Diverticulum of the Jejunum with Perforation.** By HENRY E. ARMSTRONG, CHRISTIE, M.C., M.B., F.R.C.S.Ed.... 990

**Temporo-sphenoidal Abscess.** By JAMES ADAM, M.A., M.D..... 991

**Carbonic Oxide in Tobacco Smoke.** By Professor HENRY E. ARMSTRONG, F.R.S..... 992

**Observations on the Amoebicidal Action of Conessine.** By H. C. BROWN, C.I.E., M.B., B.Ch..... 993

**A Modification of the Operation of Cholecystenterostomy.** By ANDREW FULLERTON, C.B., C.M.G., F.R.C.S.... 995

### MEMORANDA.

**Erythema Nodosum associated with Acute Rheumatism.** By HUGH WETHERBEE, M.R.C.S..... 995

**Recurrent Vesicular Eruption after Influenza.** By A. W. PANTON, M.B.... 995

**Cancer of Tongue: Excision of Tongue: Cancer of Stomach 31 Years Later.** By J. S. MANSON, M.D., D.P.H..... 996

### SCIENTIFIC PROCEEDINGS.

ULSTER BRANCH..... 996

### REVIEWS.

Influenza..... 999  
Treatment of Congenital Syphilis.....1000  
Cause and Treatment of Diabetes.....1003  
Notes on Books.....1001

### LEADING ARTICLES.

OXYGEN AT HIGH ALTITUDES.....1003  
PUBLIC HEALTH IN AMERICA.....1003

### THE WEEK.

The Medical Officer of Health for Manchester.....1005  
Economy and Information.....1005  
The Mount Everest Achievement .....1006  
Art in Industry.....1003  
Nutrition and Health.....1006  
Harveian Society.....1007  
Oxford Ophthalmological Congress.....1007  
"Phyllosan" .....1007

### GENERAL ARTICLES AND NEWS.

**The "Meningiomas."** The Cavendish Lecture. By Professor HARVEY CUSHING.....1001  
PREVENTION OF VENEREAL DISEASE.....1002  
MEDICAL NOTES IN PARLIAMENT:  
The Case of Ronald True.....1008  
MEDICAL NEWS.....1011

### REPORTS OF SOCIETIES.

EDINBURGH MEDICO-CHIRURGICAL SOCIETY:  
Measures against Tuberculosis..... 997  
WEST LONDON MEDICO-CHIRURGICAL SOCIETY:  
Rheumatoid Arthritis and its Treatment..... 998  
ROYAL SOCIETY OF MEDICINE:  
Conservative Labour Induction ..... 998

### LOCAL NEWS.

ENGLAND AND WALES—  
London's Water Supply.....1009  
London Association of the Medical Women's Federation.....1009  
London Hospital Medical College .....1009

### UNIVERSITIES AND COLLEGES.

University of Cambridge .....1011  
University of Manchester .....1011  
Royal College of Surgeons of England.....1011

### CORRESPONDENCE.

**The Interstitial Gland and Sex Problems.** By Leonard Williams, M.D...1009  
**A Pulmonary Sign in Acute Infections of the Biliary Tract.** By D. J. Harries, M.D., F.R.C.S.....1010  
**An Aortic Murmur.** By Thomas Lindsay, M.B., F.R.C.S.Ed.....1010  
**The Case of Mr. F. W. Axham.** By C. O. Hawthorne, M.D., F.R.C.P.....1010  
**Society of Apothecaries of London.** By Bingham Watson, Clerk.....1010  
**Senior Surgeon Commanders, R.N.**.....1010  
**Medicine and the Humanities.** By Richard Gillbard, M.R.C.S. ....1010

### THE SERVICES.

Indian Medical Service.....1011

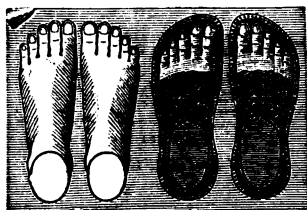
### LETTERS AND ANSWERS.

Treatment of Psoriasis.....1012  
Income Tax .....1012  
Diagnostic Shoulder Straps .....1012  
Medical Golfing Society .....1012  
A Flea Trap.....1012  
VACANCIES.....1012  
(See also page 255 of Supplement.)

### The SUPPLEMENT contains:—

Supplementary Report of Council.  
Proceedings of Council.  
Programme of Annual Meeting.  
CURRENT NOTES: Dispensing Capitation Fee.—A Grievance of the East African Medical Service.—Day Excursions at the Annual Meeting, etc.  
East African Medical Service: Reduction of Local Allowance.  
Association Notices; Correspondence; Vacancies; Appointments; Diary.

AN EPITOME OF CURRENT MEDICAL LITERATURE will be found at the end of the JOURNAL.



## DOWIE & MARSHALL, Ltd.,

BOOTMAKERS  
(EASY.)

455, WEST STRAND, CHARING CROSS, LONDON.

Registered at Stationer's Hall.]

(Established 1824.)

["G.P.O. Telephone No. 9015 Central."]

The instructions of the Profession intelligently carried out in the Departments for LADIES, GENTLEMEN, and CHILDREN, and especial attention is given to the Treatment of Weak Ankles and Flat Feet.

Illustrated Catalogue Gratis, in which is instruction for Self-measurement.

DOWIE & MARSHALL, Ltd., 455, West Strand, Charing Cross, LONDON. Managing Director C. B. DENNEY.

## INDEX TO ADVERTISEMENT PAGES.

Advertisements are classified so far as date of receipt and printing conditions make possible. Advertisements of the following classes will for the most part be found on the pages indicated:—

**UNIVERSITY, HOSPITAL, &c. VACANCIES—**  
Pp. 26, 27 and 30-32.

**ASSISTANTS, PRACTICES &c.—**  
Pp. 28 and 29.

**MASSEUSES—**  
P. 31.

**MEDICAL SCHOOLS, &c.—**  
Pp. 24-26.

**NURSING INSTITUTES—**  
P. 32.

**SCHOOLS, &c.—**  
Pp. 24-26.

**PUBLISHERS—**  
P. i of Cover, also pp. 2 and 3.

**ASSURANCE COMPANIES—**  
P. 2 and 19.

**BRASS NAME PLATES—**  
Pp. 10 and 11.

**CHEMISTS, &c.—**  
Pp. ii and iv of Cover, also pp. 3 and 11-19.

**DISPENSING BOTTLES—**  
Pp. 10 and 19.

**FOOD PREPARATIONS—**  
Pp. 2 and 12-18.

**MOTORS, TYRES, Etc.—**  
P. iii of Cover, also pp. 8-10.

**MEDICAL AND SURGICAL APPLIANCES—**  
P. iii of Cover, also pp. 4-7, 10 and 17-19.

**TAILORING & UNDERWEAR**  
Pp. 18 and 19.

**TYPEWRITERS & PENCILS**  
P. 2.

**VACCINES—**  
P. 18.

**BATHS, SPAS, &c.—**  
Pp. 19-23.

**HEALTH RESORTS—**  
Pp. 21-24.

**HOMES & ASYLUMS—**  
Pp. 21-25.

**HYGROS—**  
P. 23.

**INEBRIETY, &c.—**  
P. 20.

**SANATORIA—**  
Pp. 22 and 23.

**TUTORS & LECTURERS—**  
Pp. 24-26.

**TRANSFER AGENTS—**  
Pp. 32-34.

**MISCELLANEOUS—**  
Dr.'s A/c Forms—P. 30.  
Miscellaneous—Pp. 29 and 30.

**\*\* It must be understood that the acceptance by the British Medical Association of an advertisement does not imply a recommendation, and that no responsibility is accepted with regard to the accuracy of the statements therein contained.**

THIRD EDITION. *Demy 8vo. 79 Illustrations, 44 in Colours.*  
12s. 6d. net; postage 9d.

## DISEASES OF THE THROAT, NOSE AND EAR.

For Practitioners and Students.

By the late **W. G. PORTER, M.B., B.Sc., F.R.C.S. (Ed.)**.  
Fully revised under the Editorship of **A. LOGAN TURNER, M.D. (Ed.), M.B., C.M., F.R.C.S. (Ed.)**,  
Consulting Surgeon, Edinburgh Eye, Ear and Throat Infirmary, &c.  
AND OTHER COLLABORATORS.

"We know of no manual of its size better suited to the needs of the general practitioner."—*British Medical Journal*.  
"A source of sound teaching of moderate dimensions for the senior student and general practitioner."—*Lancet*.

London: **SIMPKIN & CO. Ltd.**

NEW WORK. *Demy 8vo. Illustrated. 12s. 6d. net;*  
postage 7d.

## THE PHYSIOLOGY OF GOUT, RHEUMATISM, AND ARTHRITIS

As a Guide to Accurate Diagnosis and Efficient Treatment.

By **PERCY WILDE, M.D.**,

*Hon. Physician to the Lansdown Hospital, Bath.*

"One turns with pleasure to views which, even though they be heterodox, are off the beaten track.....The author writes out of a long clinical experience.....Ought to be read by every practitioner."—*London Hospital Gazette*.

"A most interesting book.....shows a ray of light where all has been black enough hitherto."—*Medical World*.

Bristol: **JOHN WRIGHT & SONS Ltd.**

## SKIN DISEASES IN GENERAL PRACTICE.

By **HALDIN DAVIS, M.B. Oxon., F.R.C.S.**,  
Dermatologist to the Royal Free Hospital.  
2nd Edition. Price 25/- net.

Illustrated by 14 Coloured Plates and 73 Photos.  
Published by

**HENRY FROWDE & HODDER & STOUT,**  
1, Bedford Street W.C. 2.

## STERILITY IN WOMEN: A BOOK FOR THE WOMAN OF TO-DAY.

**1/3** A consensus of qualified opinion  
of Author on a cause of Pelvic Disease.

**H. HOLDEN, South View, Rusthall, Kent**

The Medical and Psycho-  
LOGICAL PUBLICATIONS of the **F. A. DAVIS Co.**, Philadelphia, are obtainable in Great Britain from **THE MINERVA Co.**, 9, St. Nicholas Street, Leicester. Catalogue post free.

**Pepsodent** MARK  
TRADE  
The New Day Dentifrice.

## TAYLOR'S TYPEWRITERS

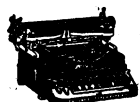
SELL, HIRE,  
HIRE PURCHASE,  
EXCHANGE, BUY AND  
REPAIR ALL MAKES  
of Typewriters and  
Duplicators.

Desks, Tables and Chairs.  
Write for Bargain List 32.  
Phone—Holborn 4810.

Authors' MSS. and Lecture Notes Typed.  
**74, CHANCERY LANE (Holborn End), W.C. 2.**

Est.  
1884.  
**THE  
ERIKA**

The best portable Writer.  
Complete in Travelling  
Case, **£14 14s.**



## 1/- TRUSSES 1/-

APPLICATION OF, TO HERNIA.

By **JOHN WOOD, F.R.S., F.R.C.S.**

With Illustrations.

London: **MATTHEWS BROS., 10 New Oxford St., W.C. 1.**

## VACCINES AUTOGENOUS AND STOCK.

In bulk or in graduated doses.

Apply, Secretary,

**LABORATORIES OF PATHOLOGY & PUBLIC HEALTH,**  
6, Harley Street, London, W. 1.

## REAGENTS FOR WASSERMANN REACTION

STANDARDISED and supplied in  
Ampoules, Ready for Use.

AS USED IN THESE LABORATORIES

For prices and particulars apply to SECRETARY,  
**LABORATORIES OF PATHOLOGY & PUBLIC HEALTH,**  
6, Harley Street, London, W. 1.

## CULTURE MEDIA

Freshly Prepared and Standardised weekly.

In Tube or In Bulk.

Apply,

**LABORATORIES OF PATHOLOGY & PUBLIC HEALTH,**  
6, Harley Street, London, W. 1.

## PARTNERSHIP ASSURANCE.

Capital is usually required by a  
firm on the death of a partner.  
Life Assurance is the ideal way of  
providing the necessary amount.

**PRUDENTIAL ASSURANCE CO., LTD.**

142, HOLBORN BARS, E.C. 1.

As SUPPLIED to **H.R.H. The Princess  
Royal of England** and **H.R.H. The Crown  
Princess of Sweden.**

## HUMANIZED MILK

Prepared only by

The **AYLESBURY  
DAIRY COMPANY, Limited,**

**31, St. Petersburg Place,**

**BAYSWATER, W.**

Telephone No. "PARK 221."

SAMPLES FREE TO MEMBERS OF  
THE MEDICAL PROFESSION.

**LEWIS'S PUBLICATIONS.**

NOW READY. EIGHTH EDITION. Revised and Enlarged. With 1628 Illustrations. Royal 8vo. £3 3s. net.

**MANUAL OF OPERATIVE SURGERY**By **J. FAIRBAIRN BINNIE**, A.M., C.M., (Aberd.), F.A.C.S., Surgeon to the General Hospital, Kansas City; Fellow of the American Surgical Association, &c."..... indispensable to every practising surgeon."—*The Lancet*."..... a perfect mine of valuable information, clearly and succinctly arranged."—*Medical Press*.

NOW READY. ELEVENTH EDITION. Thoroughly Revised. Crown 8vo. 16s. net; post free, 16s. 9d.

**ELEMENTS OF PRACTICAL MEDICINE.**By **ALFRED H. CARTER**, M.D., M.Sc., F.R.C.P.Lond., formerly Professor of Medicine, University of Birmingham.Edited by **A. G. GIBSON**, M.D.Oxon., B.Sc., M.A., F.R.C.P., Lecturer in Morbid Anatomy, University of Oxford, &c."It provides a safe guide to Clinical Medicine, and possesses the merit of simplicity..... The book is well deserving of the wide circulation that it has obtained."—*The Lancet*.

NOW READY. FIFTH EDITION. Revised and Enlarged, with Plates and Illustrations. Crown 8vo. 10s. 6d. net; post free 11s.

**MENTALLY DEFICIENT CHILDREN: Their Treatment and Training.** By **G. E. SHUTTLEWORTH**, B.A., M.D., Hon. Consulting Physician (formerly Medical Superintendent), Royal Albert Institution, Lancaster, &c.; and **W. A. POTTS**, M.A., M.D., Medical Officer to the Birmingham Committee for the Care of the Mentally Defective, etc."The book remains the best of its kind..... and is assured of a welcome."—*Medical Officer*.

NOW READY. Crown 8vo. 4s. 6d. net; postage 3d.

**LECTURES ON THE SURGERY OF THE STOMACH AND DUODENUM.** By **JAMES SHERREN**, C.B.E., F.R.C.S., Surgeon to the London Hospital; Member of Council and Court of Examiners, Royal College of Surgeons; Examiner in Surgery, University of London, &c."In this book will be found much valuable help....."—*The Lancet*."The little volume is a valuable addition to medical literature."—*British Medical Journal*.

Demy 8vo. 7s. 6d. net, postage 6d.

**ESSAYS AND CLINICAL STUDIES.**By **F. G. CROOKSHANK**, M.D. Lond."Few books have afforded us greater pleasure to read, and we have no hesitation in saying that every page will amply repay a careful perusal."—*Med. Press Circular*.

\* \* \* Complete CATALOGUE of Publications post free on application.

London: **H. K. LEWIS & CO. LTD.** 136 Gower St. & 24 Gower Place, W.C. 1.**DETOXICATED VACCINES**

(Prepared by the "Pickett-Thomson" Research Laboratory, St. Paul's Hospital, 24, Endell Street, London, W.C. 2.)

**Endotoxin produces febrile reactions**

Bacterial endotoxin when liberated in the body by lysis of bacteria gives rise to febrile reactions.

Detoxicated Vaccines contain no endotoxin, and do not produce this effect.

Detoxicated Vaccines are prepared for—

GONORRHOEA.

INFLUENZA.

PYELITIS.

BOILS AND ABSCESSES.

PYORRHOEA.

TYPHOID FEVER.

TUBERCULOSIS.

COLDS AND BRONCHITIS.

PNEUMONIA.

CYSTITIS.

PUERPERAL FEVER.

MENINGITIS.

ACNE.

DIPHTHERIA, Etc.

All the above varieties are supplied in one c.c. graduated phials, 5 c.c., 10 c.c. and 25 c.c. Bulk Bottles.

Please address all enquiries to the

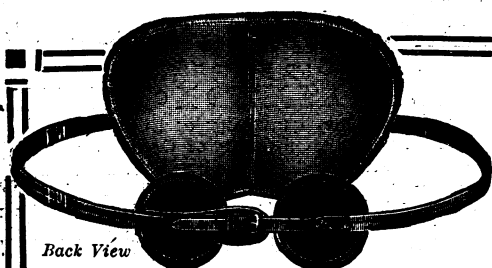
**Detoxicated Vaccines Dept., Genatosan, L<sup>TD</sup>.**

143-5 Great Portland Street, LONDON, W. 1.

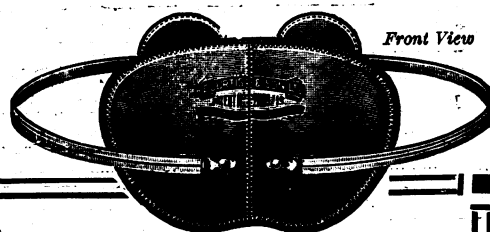
Specially prepared literature dealing extensively with Vaccine Therapy will gladly be sent to members of the Medical Profession upon request.



# The CURTIS Abdominal SUPPORT



Back View



Front View

## A Success! and Why? CONSTRUCTION.

The direct Anterior  
and Posterior Pressure.

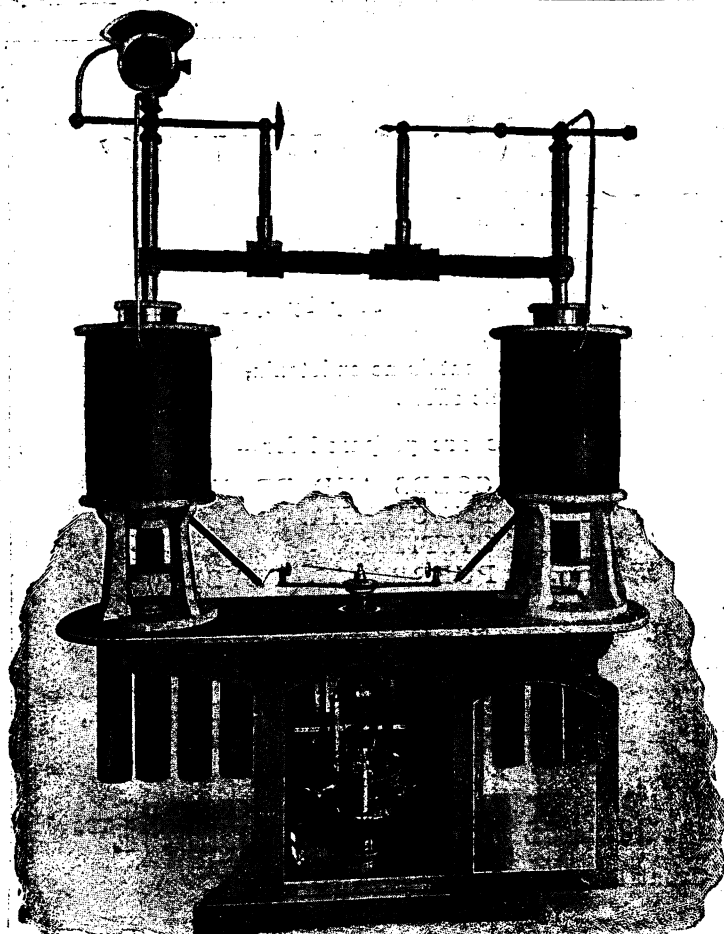
The superiority of a direct pressure operating between two fixed points, will be readily apparent. The whole weight of the viscera is transferred to the sacrum, *leaving the hips perfectly free from that cramping pressure so bitterly complained of by wearers of many so-called abdominal supports, or "compressors."* By means of direct pressure we are able to dispense with the use of perineal bands. This claim is made after having fitted some thirty thousand patients.

Write for List to—

**H. E. CURTIS & SON, Ltd., 8, Old Cavendish Street, London, W. 1.**

Directors: H. E. CURTIS, and L. V. CURTIS.

Telephone: Mayfair 1603.  
Telegrams: Mayfair 1608.



# THE ISOMETRIC GROUP FOR DEEP X-RAY THERAPY

BY CROSS-FIRE (ERLANGEN) AND LARGE FIELD (SCOTT AND DESSAUER) METHODS OF TREATING  
**MALIGNANT DISEASES.**

We are now in a position to execute orders for this Group, which is **manufactured throughout in our London Factory.**

Prices and Specifications on application to

**A. E. DEAN & CO.**

Manufacturers of X-ray and Electro-medical  
Apparatus of the Highest Quality,

**LEIGH PLACE, BROOKE ST., HOLBORN,  
LONDON, E.C. 1.**

Branch Factories: Willesden and Dalston.

**E**ASTMAN Dupli-Tized X-Rays Films have the softness and delicacy which enables you to reproduce the finest gradations in Radiography. In addition they have the speed, the latitude and the dependable uniformity which have made Dupli-Tized Films the standard of quality. That's why the best radiographers rely on

Kodak Limited  
(X-Ray Dept.)  
Kingsway,  
London, W.C.2.

## Eastman Dupli-Tized X-Ray Film

# HIGH TENSION TRANSFORMERS

**For X-RAY WORK &c.**

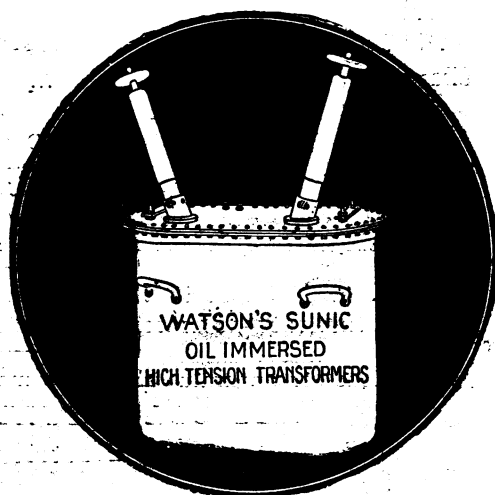
**OIL-IMMERSED AND DRY TYPES**

Specially designed for maximum efficiency with  
Gas and Electron Tubes.

Constructed for continuous running and  
standardised technique.

We have been building Trans-  
formers for many years on sound  
electrical engineering principles.

*Our New Bulletin 48 S gives full  
particulars of all types as well as  
considerable data of use to the  
Radiologist. Post free on request to*



**WATSON & SONS (Electro-Medical) LIMITED**

In business since 1837

**SUNIC HOUSE, PARKER STREET, KINGSWAY, LONDON, W.C. 2.**

Telephone: REGENT 1227 and 1228.

Telegrams: "SKIAGRAM, LONDON."

# SURPLUS X-Ray and Electro-Medical Stores

## THE MEDICAL SUPPLY ASSOCIATION, LTD.

167-185, GRAY'S INN ROAD, LONDON, W.C. 1,  
have acquired the surplus X-Ray and Electro-Medical Stores of the  
**WAR OFFICE**  
of an estimated value of **£100,000.**

We are therefore able to offer apparatus by the best makers at a fraction of current prices. The Apparatus has been re-conditioned and is therefore guaranteed to be in

### PERFECT WORKING ORDER

<i>THE STOCKS COMPRISE:—</i>				£	s.	d.
Complete X-Ray Installations with Accessories	...	from		115	0	0
Diathermy Apparatus	...	"		35	0	0
Galvanic and Faradic Switchboards on Marble Panels	...	"		16	10	0
Wheatstone Illuminated Stereoscopes	...	"		7	10	0
Induction Coils for X-Rays, &c.	...	"		28	0	0
Negative Viewing Boxes	...	"		1	5	0
Radiographic Couches	...	"		38	0	0
Amperemeters. Milliamperemeters and Voltmeters	...	"		2	5	0
Whole Body Light Bath Cabinets	...	"		40	0	0
Electromagnets for Surgical Purposes	...	"		8	0	0
Intensifying Screens for Radiography	...	"		1	0	0
" " Cassettes	...	"		1	0	0
Mercury Interrupters	...	"		5	0	0
etc., etc.						

**NOTE.—RECONDITIONED AND IN PERFECT WORKING ORDER.**

**SEND FOR SURPLUS CATALOGUE No. 1 NOW READY.**

*Export Orders will receive immediate attention and despatch in those countries where this class of goods is subject to Importation Tax a very considerable saving can be effected by ordering these stores.*

**An UNPRECEDENTED OPPORTUNITY for Hospitals, Doctors, Nursing Institutes, Sanatoria, Technical Colleges, Industrial Laboratories, &c., &c.**

Applications for apparatus should be marked "SURPLUS," and addressed to—

**MEDICAL SUPPLY ASSOCIATION, Ltd.**

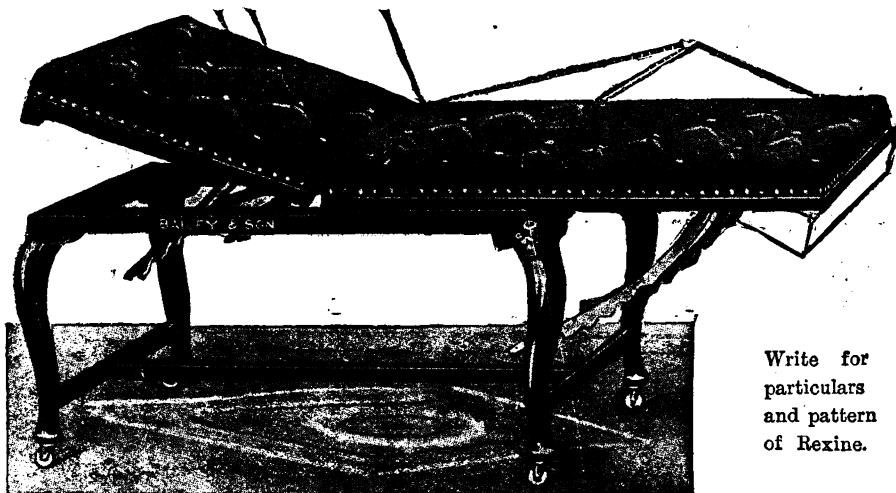
**Electrical Department,**

**167-185, Gray's Inn Road, London, W.C. 1.**

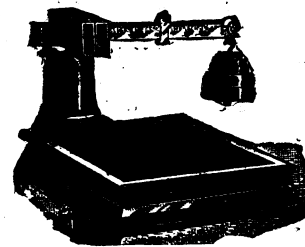
stating apparatus required, voltage of your electrical supply, and whether constant or alternating current is available. A detailed specification and estimate will be sent you by return.

# W. H. BAILEY & SON'S CONSULTING ROOM COUCHES.

Write for CONSULTING ROOM FURNITURE CATALOGUE.



**Bailey's "Perfection" Consulting Room Couch.**  
Solid Mahogany, Oak, or Walnut. Upholstered Rexine Leather Cloth (washable). With or without Leg Crutches.



**PERSONAL WEIGHING MACHINE**

10 inches high. Can be stowed under couch. Weighs to 20 stone.

Write for particulars and pattern of Rexine.

Surgical Instruments and Appliances -  
Hospital and Invalid Furniture -

**38, OXFORD STREET,  
2, RATHBONE PLACE,**

**LONDON, W. 1.**

Telegrams: "Bayleaf, London."

Telephone: Museum 1484.

## SALT & SON, LTD.

(Head Offices): **7, CHERRY STREET  
BIRMINGHAM.**

*Orthopædic Appliance Specialists. Artificial Limb Manufacturers.*

### SALT'S GASTROPTOSIS BELT

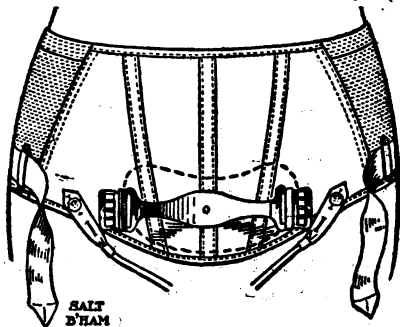
(PATENT No. 173,713).

as designed for JOHN F. HALL-EDWARDS, Major (late R.A.M.C.), L.R.C.P. Edin., D.M.R. & E. Cantab., F.R.S. Edin.

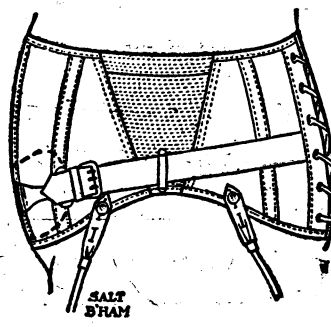
**LONDON CONSULTING  
ROOMS:  
14-18, BLOOMSBURY ST.  
W.C. Museum  
3845**

Fully qualified Nurse in attendance.

**BY APPOINTMENT ONLY.**



Front View.



Side View.

**Write for Particulars and Measurement Forms.**

Extract from article "The Diagnosis and Treatment of Gastroptosis," by Major HALL-EDWARDS, in *B.M.J.*, May 14 1921:—"By far the most important item in the treatment is the special abdominal belt for holding the stomach up."

SEND FOR PARTICULARS OF—

**SALT'S REGISTERED ENTEROPTOSIS CORSET.**

**SALT'S PATENT VARUS BOOT.**

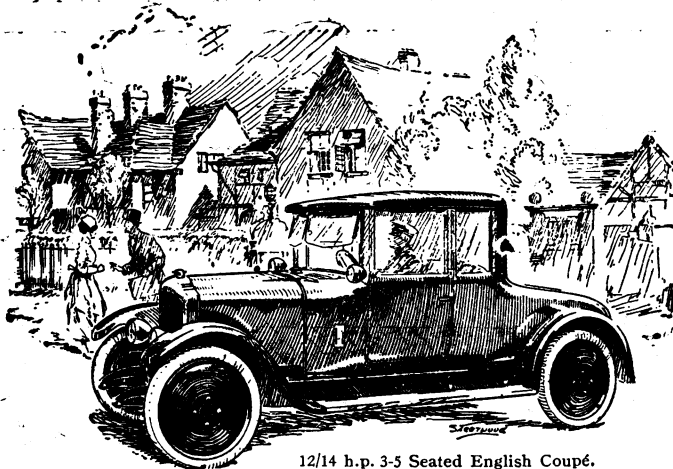
**SALT'S PATENT KIDNEY BELT, &c., &c.**

# Proved by Doctors

No class of Motor user is a better judge of a car than a doctor. To meet their requirements a car must be thoroughly reliable, durable, comfortable and economical.

The fact that since the earliest days of motoring the De Dion Bouton has been known as a doctor's car, and has been tested and appreciated by thousands of medical men is therefore the best assurance of its unequalled qualities.

Every owner is a De Dion Bouton enthusiast.



12/14 h.p. 3-5 Seated English Coupé.

12/14 h.p. Chassis with Tyres ... .. £495  
Complete Cars from ... .. £610 to £825

Telephone:  
Regent 3148  
(2 lines)

# De Dion Bouton

Telegrams:  
"Andesite, Wesdo,  
London."

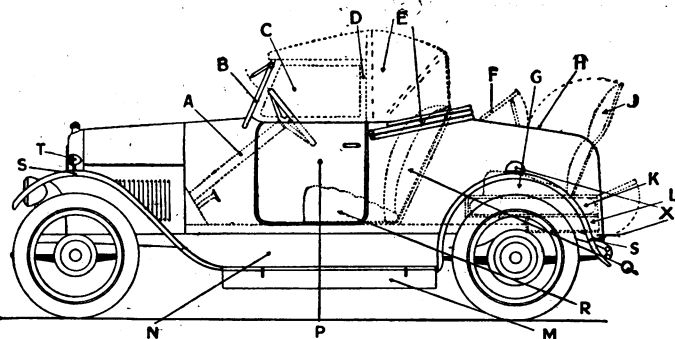
Limited.

10, Great Marlborough Street, London, W. 1.

## PEDIGREE TELLS ECONOMICAL AND DURABLE.

The new AUSTIN Twelve chassis with OFFORD FEATHERWEIGHT COACHWORK. £13 tax, 30 miles per gallon. Four speeds. Self starter and Dynamo lighting. Full equipment. Seats three on main seat and two in dickey. Doors both sides. All-Weather Hood, &c. A strong economical car for hard service.

- A. Specially Raked Steering.
- B. Sloping Double Screen, Top Half Adjustable.
- C. Side Curtains with Large Windows.
- D. Patented Support to make Side Curtain Open with Door.
- E. Low Hood Folding Very Compactly.
- F. Adjustable Scuttle for Occupants of Dickey Seat.
- G. Low, Comfortable and well Protected Dickey Seat.
- H. Nearly Flat Top to Back to take Luggage.
- J. Well Sloped Luxurious Back for Dickey Seat.



- K. Spare Wheel in Concealed Locker under Dickey.
- L. Locker for Side Curtains.
- M. Large Convenient Tool Box under Step Platform.
- N. Full Anti-Rattle Step Shields.
- P. Very Large and convenient Side Doors.
- Q. Softly Padded Sloping Back giving Ample Leg Room.
- R. Low Soft Seat wide enough to Seat 3.
- S. Strong Domed Mudguards.
- T. Side Lamps on Front Wings.
- X. Convenient Steps for Entrance to Dickey.

**SPECIAL 12.8 H.P. AUSTIN DOCTORS' ALL PURPOSE CAR.**

**EARLY DELIVERIES  
DEFERRED PAYMENTS  
EXPERT ADVICE  
BODIES for all CHASSIS**

## Offord & Sons, Ltd.

*Established over a century.*

67, George Street, Portman Square, W. 1.  
Telephone: 99 Paddington. Telegrams: "Droffo, London,"  
AND AT SOUTH KENSINGTON.

**COMPLETE CAR £635  
BODY ONLY - £185**

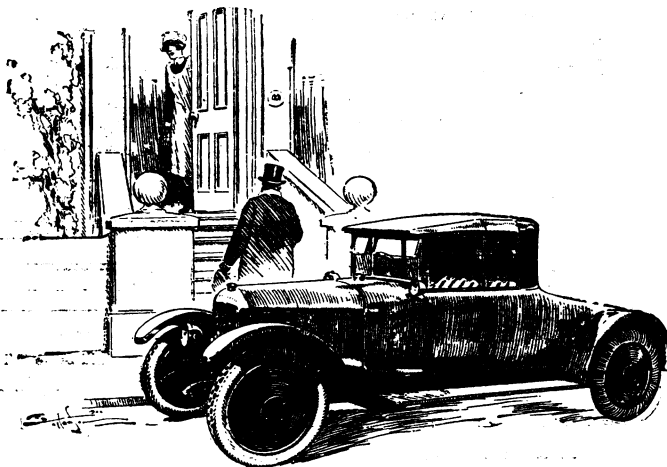
*Write for Illustrated List  
of Six Special Patterns.*

**AT FIRST SIGHT NOT THE CHEAPEST BUT INCOMPARABLY THE LEAST EXPENSIVE IN THE LONG RUN.**

# DeDion Bouton

## THE DOCTOR'S CAR

We are authorised agents for these world-renowned cars and can offer earliest deliveries of the famous 12/14 chassis, fitted with all styles of English Coachwork. We supply, if required, on Deferred Payments, or will take your present car in part exchange.



12/14 h.p. Model with English 3-5 std. All-weather Coupe Body—closed.

REPRESENTATIVES SENT TO ANY PART, IRRESPECTIVE OF DISTANCE, TO ADVISE AND QUOTE.

DEFERRED PAYMENTS. PART EXCHANGE. Other makes of Cars supplied on similar terms.

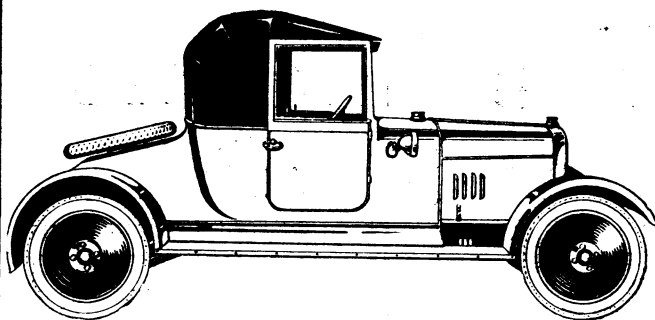
### JOHNSON, NEAL & CO., Limited,

Automobile Engineers,

168, REGENT STREET, LONDON, W.1.

Telephone: REGENT 1940-1.

Telegrams: "JONSONEAL REG. LONDON."



10/20 h.p. four cylinders, 65x110 mm. (1,460 c.c.) pump and splash lubrication, fabric cone clutch Bosch magneto ignition, Zenith carburettor, three speeds, right hand gate change, unit gear box, spiral bevel final back axle drive, 710x90 mm. tyres on disc wheels, Lucas electric lighting and starting.

The Standard Galloway Coupé	£495
The Galloway 4-Seater	£425
The Galloway 2-Seater	£385

# Galloway

CARS

## Another Letter of Appreciation from a Medical Man.

27th February, 1922.

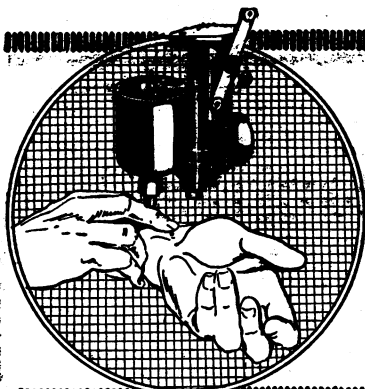
"It is now nearly five months since I took delivery of my Galloway Coupé, and it has been in daily use for professional purposes during that period.

The engine is quiet, powerful, and easy to start. The steering, springing and bodywork are all excellent. The car is most economical on oil and petrol, and I have nothing but praise for its performance. I consider it an ideal car for a medical man."

*The above is only one of numerous gratifying expressions of opinion which we are constantly receiving. Local Trial Runs on application to:*

**GALLOWAY MOTORS, LTD.**

Tongland, Kirkcudbright, N.B.



## The Zenith is the Popular Pulse Regulator

for every type of car. It ensures for the engine that even, unhurried pulsation which is the signal of perfect running and good order in the mechanism.

## ZENITH CARBURETTORS

while ensuring petrol economy, are a boon to the medical profession because of their absolute dependability when it is a question of quick starting and rapid acceleration.

**HAVE ONE ON A MONTH'S TRIAL.**

**ZENITH CARBURETTOR CO. LTD., 40-44, Newman Street, London, W. 1.**

Telephone: Museum 4812-4813.

Telegrams: Zenith Museum. 4812, London.

ROVER. MORRIS-COWLEY. HUMBER. ROLLS-ROYCE. WOLSELEY. RILEY. TALBOT-DARRACQ. AUSTIN. LANCHESTER.

## A DOCTOR'S CAR

is always in perfect running order—it is essential that it should be so. They are, as a rule, well cared for cars of the best makes, and can be guaranteed to give satisfactory service under all conditions.

Many Doctors put into practice the very good policy of having a new car every year and that is the reason why we have on our Register particulars of many such Doctor's cars that are for sale. Cars that are in perfect condition and running order, and that are being used daily. A good second-hand car such as these is infinitely better value than an inferior new car at the same price. Why not let us refer you to the owners of such cars which are on our Register? Tell us the type of car you would prefer and your price limit. There is no charge to you—our service is to our registered members.

THE MOTOR SALES REGISTRY, LIMITED, 11, WARWICK ROW, COVENTRY.

OVERLAND. FORD. R.M.C. CHEVROLET. HILLMAN. STANDARD. CALCOTT. ALVIS. DAIMLER. SWIFT. SINGER



(Dees) "Auroroscope"  
Pat. Fundus



Attachment | Attachment in situ.

## (Dees) FUNDUS "AURORSCOPE" ATTACHMENT.

"PATENT"

We absolutely guarantee that a novice can see every detail of the Retina.

PRICE: "Fundus" Attachment, £2 : 2 : 0 (postage 6d.).

Fundus "Auroroscope," Complete, £3 : 3 : 0

(postage 6d.). Model Practice Eye—with the use of which Students can easily become proficient in Ophthalmoscopy, Retinoscopy, and Sight-Testing—Price 12/6 (postage 6d.).

Your Morton Converted 25/-

The "AURORSCOPE" CO., Ltd., Fulwood House, Fulwood Place, High Holborn, W.C. 1.

(side Chancery Lane Tube station).

WHERE DEMONSTRATIONS ARE GIVEN DAILY.

As the demand for our "AURORSCOPE" exceeds the supply we cannot send goods on approval.



## Standard

Light 2 & 4-Seaters: 8 & 11 h.p.

Exeter, 1/5/22.

"I have one of your 11.9 'Standard' Coupés and it has been doing doctor's work for the last 10 years; it is only right that I should let you know what an excellent car it has proved to be. The work is continuous, but it is still going strong."

— M.B., B.Ch., M.R.C.S.,

L.R.C.P.

11 h.p. (Rating 13'9) 2-Seater, £515; 4-Seater, £525.

Send for particulars.

The Standard Motor Co., Ltd.,  
Coventry. London Showrooms:  
49, Pall Mall, S.W. 1.

Count them on  
- the Road -

Registered  
Trade Mark

**Absolute Protection in every kind of weather**

## Instant Relief

and permanent correction of your  
Bunion trouble is afforded by

**Scholl's**

**Bunion Reducer**

Worn in usual Shoe, prevents

bulging. Three sizes, 2/6 each.

Booklet 'The Feet and Their Care' sent free on request  
The Scholl Mfg. Co., Ltd.,  
1-4, Giltspur Street, London, E.C. 1.

## NAME PLATES IN SOLID BRONZE

With Cream Fired Vitreous Enamel Letters.  
IMPERISHABLE and CLEARLY VISIBLE  
Dignified Appearance.

NEVER REQUIRE CLEANING.

Send Particulars for Free Sketch.

Illustrated List Free.

**TOWNSHENDS LTD.,**

46, Ernest St., Birmingham.

## NEW LIGHT CARS

HUMBER,  
STANDARD,  
SWIFT, etc.

**£100 cash**

Balance by instalments  
to suit your convenience.

Any make of car supplied.

Your old car taken in part payment.

**SAUNDERS GARAGE,  
GOLDER'S GREEN, N.W. 11**

## SPECIAL OFFERS! Specially Manufactured WHITE GLAZED BOTTLE WRAPPER

5 Reams, 4/- per Ream | 10 Reams, 3/6 per Ream.  
(8-oz. Bottle Wrapper. 500 sheets.)

4-oz. Wrappers (500 sheets) 6d. per Ream less above.

2-oz. do. do. 1s. do.

Bottle Labels: 3/6 per 1,000; 5,000, 3/-; 10,000, 2/6.

The Mixture. Own wording.

**PROFESSIONAL ENVELOPES.**

Good Quality 8/6 per 1000.

Foreign Postage extra. All Carriage Paid United Kingdom.

We make all kinds of Stationery for the Profession

— Loose Leaf Ledgers, a/c Forms, Memos, etc.

**HAMILTON'S PRINTERS, BURNLEY.**

## DISPENSING BOTTLES

ARE STILL FALLING IN PRICE.  
FINEST QUALITY ENGLISH BOTTLES

(No Cheap Foreign)

at Lowest Prices Carriage Paid.

Write for Prices—

**H. JESSOP (Dept. B), 27, Westgate, Burnley**

# Strawberry Ether Extractive for Sprue.

We have this in course of preparation according to important communication to the "British Medical Journal" of May 6th.

*Enquiries will receive immediate attention.*



**W. MARTINDALE, Manufacturing Chemist**  
10, NEW CAVENDISH STREET, LONDON, W. 1.

Telegraphic Address—"MARTINDALE, CHEMIST, PHONE, LONDON."  
Telephone Nos.—LANGHAM 2440 and 2441.

## IN THE CASE OF INFANTS AND CHILDREN

THE administration of Nujol is a most advantageous method of exhibiting paraffin in the case of infants and children.

Nujol is a pure and uniform product which is so palatable that the addition of flavouring agents or other diluents is quite unnecessary.

Nujol forms and maintains regular bowel habit.

Nujol acts mechanically, softens, moistens, lubricates, promoted peristalsis, absorbs and removes poisonous products.

Nujol can be given at any age, for any length of time, in doses, adjusted to the needs of every individual case.

Special terms are given to Maternity and Child Welfare Clinics.

*Samples and authoritative literature on application.*

To **NUJOL DEPT., ANGLO-AMERICAN OIL CO., Ltd.,**  
**Minerva House, Bevis Marks, London, E.C. 3.**

Please send Booklets marked:—

"IN GENERAL PRACTICE." (Especially prepared for the Physician).

The following may also be of interest to the Physician:

"A SURGICAL ASSISTANT." "IN WOMEN AND CHILDREN."

Also Sample.

Name..... Address.....





# Sal Hepatica

THE STANDARD SALINE LAXATIVE.

Infectious diseases, such as pneumonia, influenza, tuberculosis, meningitis, diphtheria, infantile paralysis, or in fact any of those diseases due to pathogenic bacteria, could many times be warded off if the body were protected by a healthy blood stream that is swarming with phagocytes. The accumulation of waste in the intestinal tract permits of the absorption of poisonous material or toxins into the blood, which are then distributed to other parts of the body through the entire circulatory system, thereby producing in a mild way a general toxemia. This contaminated blood is not only a carrier of poison but also in its impaired state is unable to properly perform one of its greatest functions; that of protecting the body from disease by destroying any invading micro-organism.

Wherever a disturbance of function or structure of any part of the body occurs, there is produced by these functional changes toxins which must be eliminated as waste products in order to prevent their absorption into the circulation. This is necessary, or else the body cannot regain its normal condition.

To produce proper elimination, *Sal Hepatica* is the ideal preparation for the Practitioner to recommend, owing to its efficiency, palatability, and low cost to the patient. If frequently administered, it will aid to a considerable degree in warding off disease.

A trial bottle of *Sal Hepatica* will be sent to members of the medical profession upon request to:—

**STONE-BALLANTINE, LIMITED, 13, Well Court,  
Queen Street, London, E.C. 4.**

On sale by wholesalers, THOS. CHRISTY & CO., 4-12, Old Swan Lane, E.C.; BUTLER & CRISPE, 80, Clerkenwell Road, E.C. 1; AMERICAN DRUG SUPPLY CO., LTD., 6, Northumberland Avenue, W.C. 2; MAY ROBERTS & CO., LTD., 7, Clerkenwell Road, E.C. 1; FRANCIS NEWBERRY & SONS, LTD., 27, Charterhouse Square, E.C. 1; and R. HOVENDEN & SONS, LTD., 25-33, Berners Street, W. 1.



## ALLIANCE DRUG AND CHEMICAL CO.

10, Beer Lane, Gt. Tower St., E.C. 3.

Telephone: CENTRAL 1300.

Tel. Address: "NALTROF," BILGATE, LONDON.

Established 1812—Reorganised 1902.

The Company specializes in providing the Medical profession at the lowest possible inclusive prices (no charge for Bottles, &c. or Cases, &c.) with pure and reliable Drugs, Chemicals, Pharmaceutical Preparations, Compressed Tablets, Pills, Surgical Dressings, and Stock Mixtures of approved Formulae as used by the London and other Hospitals. We append a few sample prices for guidance of the great saving that can be effected.

NOTE.—Only Terms Net Cash with order without discount, or orders received through London Merchants or Bankers. Goods carriage forward. All packages free. Export cases extra.

### NEW DETAILED PRICE LIST NOW READY.

#### INFUSIONS CONCENTRATED.

1-7 in 6 lb. Bottles.

Aurant @ 2/9 lb.	Gentian @ 1/9 lb.
Aurant Co. @ 2/9 lb.	Rhei @ 3/- lb.
Columba @ 1/5 lb.	Senega @ 3/8 lb.
Cinchon Acid @ 3/- lb.	
Lassars Paste, 14 lbs @ 1/10 lb.; 1 lb. @ 2/2 lb.	
*Lin. Belladon. Meth., 5 lbs. @ 4/3 lb.; 1 lb. @ 4/8.	
*Liq. Ether Nitros (Sp. Ether Nit Substitute) 5 lb. @ 2/3 lb.	
*Liq. Ammon. Acet. Conc. (1-7) 6 lbs. @ 1/3 lb.	
Aromat., 6 lbs. @ 1/- lb.	
Morph. Hydrochlor. P.B. 1 oz. at 10/- oz.	
Petroleum Jelly Flav. P.B. 7 lbs. @ 9/4 lb.	
Bismuth Carb., 3 lbs. @ 13/7 lb.	
Chloroform Pur., 8 lbs. @ 4/2 lb.	
Pot. Bromide, 7 lbs. @ 1/1 lb.	
Quinine Sulph., 4 ozs. @ 3/6 oz.	

#### PILLS TASTELESS COATED.

Potass. Iodid. P.B., 3 lbs. @ 17/6 lb.
Soda Sulphas Feathery cryst., 7 lbs. @ 3d. lb.
Sp. Ether Nit. P.B., 44 lbs. @ 5/8 lb.; 1 lb. @ 6/1
Sp. Amon. Aromat. P.B., 5 lbs. @ 4/2 lb.
Syr. Cascara Aromat. P.B., 6 lbs. @ 2/10 lb.
Glycero-Phosph. Co., 6 lbs. @ 2/4 lb.

#### SYRUPS.

Aurant, B.B., 7 lbs. @ 2/- lb.
Easton, B.P., 7 lbs. @ 2/- lb.
Ferri Iodid. P.B., 7 lbs. @ 1/10 lb.
Ferri Phosph. Co., B.P.C., 7 lbs. @ 1/8 lb.
Hypophosph. Co., B.P.C., 7 lbs. @ 1/8 lb.
Prunell. Virg., B.P., 7 lbs. @ 1/8 lb.
Rhamni, 7 lbs. @ 1/8 lb.
Rhei, P.B., 7 lbs. @ 1/5 lb.
Scilla, P.B., 7 lbs. @ 1/1 lb.
Senna, P.B., 7 lbs. @ 1/6 lb.
Tolut, P.B., 7 lbs. @ 1/1 lb.

#### TABLETS COMPRESSED.

Bland's (Sugar-Coated), gr. 5	Per 1000.
Nitroglycerini, P.B., gr. 1-50th	4/9
Perchloride of Mercury (Coloured)	6/-
One Tablet in 1 pint of Water is equivalent to 1-1000.	13/-
Thyroid Gland, gr. 5	15/6

We endeavour to adhere to prices quoted, but as same fluctuate from day to day, they must be considered as subject to change without notice.

#### TINCTURES.

In 5 lb. Bottles.

B.P. Aqnos.		B.P. Aqnos.
Belladon ... 4/6	2/-	Hyoscyam ... 5/-
Benzoin Co. ... 5/7	—	Nucis Vom. ... 4/3
Camph. Co. ... 3/4	1/6	Opil ... 4/-
Card. Co. ... 3/1	1/7	Quin. Amon. ... 4/2
Gentian Co. ... 3/4	1/8	Rhei Co. ... 3/1
Ung. Acid Boric P.B., 28 lb. pail @ 1/3 lb.		
Hydrarg. P.B., 7 @ 2/8 lb.		
Ammon., 7 lbs. @ 2/3 lb.		
Ichthamol B.P.C., 7 lbs. @ 3/- lb.		
Zinci Ox., Benz., 28 lbs. @ 1/2 lb.		

\*Minimum quantity at these prices: Home Trade 3. Export 12 Winchester Quarts assorted.

ORANGE GROVE

### A CHAIN OF CIRCUMSTANCES WHICH SECURES A PER- MANENT INCOME OF £500 PER ANNUM ON EACH FIVE-ACRE ORCHARD.

1. Proximity to the Railway, enabling produce to be quickly marketed. No point on the Prudential Estates more than two and-a-half miles from Rail Head.
2. Suitability of soil and correct irrigation. This Company is developing the finest Citrus Estate in the British Empire.
3. Directors are well-known public men in South Africa.
4. Management is undertaken for absentee owners for a small percentage of the profits.
5. An unlimited market for the fruit grown, because it reaches the markets of Europe and America during the summer months.
6. The life of an orange tree is given as from 40 to 60 years if the tree is well cared for.

To procure a five-acre Orange Orchard in South Africa the outlay involved is only £562 10s., or £125 per annum for five years. Larger acreage pro rata. The investor is the actual freeholder.

The ratio of profit is conservative, since the Union Government in a pamphlet stated that groves in full bearing have yielded from £200 to £300 per acre.

Full particulars, plans, etc. from Dept. 60.

**SOUTH AFRICAN PRUDENTIAL, Ltd.**  
73, Queen Victoria Street, E.C. 4.

RAILWAY STATION

**"Tyco's" Sphygmomanometer**  
for the quick and accurate determination of both DIASTOLIC and SYSTOLIC readings of Arterial Blood Pressure. Obtainable from all reputable dealers.—Particulars free from SHORR & MASON, Ltd., Macdonald Road, Walthamstow, London, E. 17.

### ARHÉOL (C<sub>15</sub>H<sub>26</sub>O)

Active principle of Sandalwood Oil.

Used with conspicuous success in

**Gonorrhœa,  
Vesical Catarrh,  
Cystitis, etc.**

## ARHÉOL

Directions: 10 to 12 Capsules daily.

### ASTIER LABORATORIES:

45, Rue du Docteur Blanche, PARIS.

For Samples and Literature, address—



**WILCOX, JOZEAU & CO.,**  
49, Haymarket,  
London, S.W. 1.

**Australasia:**  
Messrs. Joubert & Joubert,  
552, Flinders Street,  
MELBOURNE.

**Canada:**  
Messrs. Rougier Bros.,  
210, Lemoine Street,  
MONTREAL.

**India:**  
Messrs. The Anglo-French  
Drug Co., Ltd.,  
P.O. Box 460, BOMBAY.  
P.O. Box 86, CALCUTTA.  
17J, Broadway, MADRAS.

## VITAMINES.

For Food Value and  
Digestive Properties you  
should recommend

**CLARK'S CREAMED BARLEY**  
THE NEW BRITISH BREAKFAST FOOD  
WRITE FOR A FREE SAMPLE.  
**GEORGE CLARK & SON, LTD.,**  
7, Broadway Works, Millwall Dks., London, E. 14



THE ORIGINAL

## The Ideal All-Weather Food-Drink.

— Made in England. —

Horlick's Malted Milk is meat and drink in one, because it contains all necessary nutritive elements in the correct proportions demanded by Nature to support life and maintain health. Composed of the extracts of selected malted barley and wheat flour, combined with pure, Pasteurised cow's milk, it is perfectly digestible and rapidly assimilated, while Vitamines, those growth-promoting essentials, are supplied by both the milk and the grain.

Ready in a moment by stirring briskly in hot or cold water only.

To secure the original, specify Horlick's when prescribing

Samples will be forwarded free and postage prepaid to  
Members of the Medical Profession on application to

**HORLICK'S MALTED MILK CO., SLOUGH, BUCKS, ENGLAND.**

**The STANDARD  
HÆMATINIC.**

"The employment of Bi-Palatinoids places the administration of exceedingly unstable compounds like ferrous carbonate, phosphate and arsenate, upon a sounder and more scientific basis."—THE LANCET.

# "BI-PALATINOIDS"

(No. 500)

OF NASCENT FERROUS CARBONATE.

Sample and Literature on application.

**OPPENHEIMER, SON & CO., LTD.,**  
179, Queen Victoria Street, London, E.C.4.  
Entirely British House since Foundation in 1891.

# Santal Midy

FOR INTERNAL TREATMENT OF GONORRHOEA  
URETHRITIS, and other affections of  
the GENITO-URINARY TRACT.

**Santal Midy Capsules** have been prescribed with uniform success for over 30 years. Distilled from carefully selected Mysore Santal Wood, the oil is bland and remarkably **FREE FROM THE IRRITANT AND NAUSEATING EFFECTS**


which are provoked by many preparations. There is marked absence of Gastric and other disturbances, diarrhoea and skin eruptions. Its mild chemotactic properties permit its administration in relatively large doses without fear of too violent reaction or intolerance.

### SANTAL MIDY CAPSULES

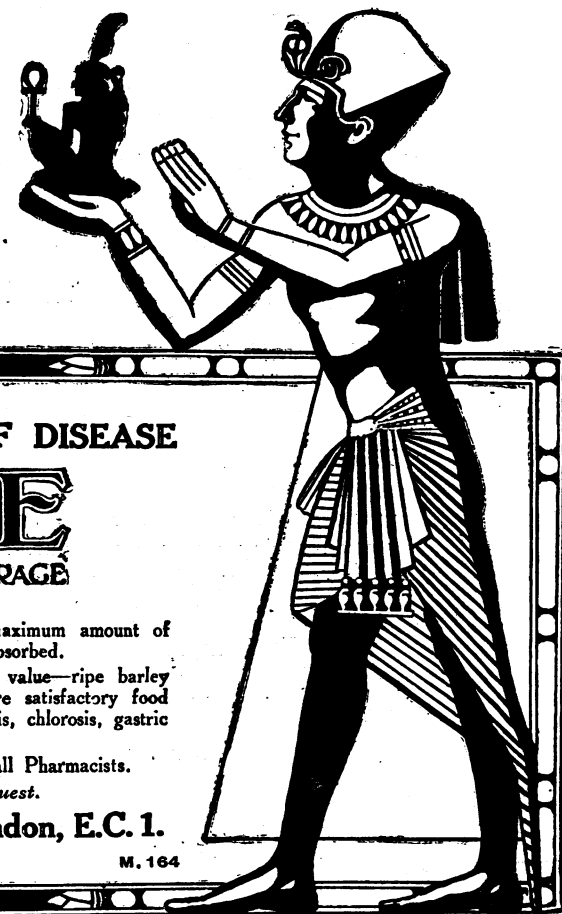
may be prescribed and **relied upon** in all stages of Gonorrhoea, and in other forms of Urethritis and affections of the Genito-Urinary tract.

The capsules contain 5 drops, and usually 10 to 12 are given daily in divided doses.

Prepared in  
the  
**Laboratoire, de  
Pharmacologie  
Generale, 8 Rue  
Vivienne, Paris,**  
and sold by most  
Chemists and  
Wholesale Drug-  
gists throughout  
the world.



SETIY I.  
*The Second King  
of the 19th dynasty,  
Father of Ramses II.*



IN THE DIETETIC TREATMENT OF DISEASE

# OVALTINE

TONIC FOOD BEVERAGE

"Ovaltine" furnishes the system depraved by illness with a maximum amount of approved nutriment, in a form that is easily digested and wholly absorbed. The nutritive constituents of "Ovaltine" are of unquestionable value—ripe barley malt, creamy milk and fresh eggs, flavoured with cocoa. No more satisfactory food could be prescribed for use in the dietetic treatment of tuberculosis, chlorosis, gastric or duodenal ulcer, neurasthenia, insomnia, etc.

This delicious and nourishing food-beverage is obtainable from all Pharmacists.  
*A liberal supply for Clinical Trial sent free on request.*

**A. WANDER Ltd., 45, Cowcross St., London, E.C. 1.**  
Works: KING'S LANGLEY, HERTS. M. 164

## Valentine's Meat-Juice

**In Dyspepsia, Catarrh of the Stomach or Intestines, or Gastric Irritability from any cause, when the Digestive Organs reject milk and other foods, Valentine's Meat-Juice will be Retained and Demonstrate its Power to Restore and Strengthen**

**"For a Tired Stomach."**

It is in constant use in Hospital and Private Practice and endorsed by eminent medical men.

Physicians are invited to send for Clinical Reports.

For sale by European and American Chemists and Druggists.

**VALENTINE'S MEAT-JUICE COMPANY,**

**Richmond, Virginia, U. S. A.**

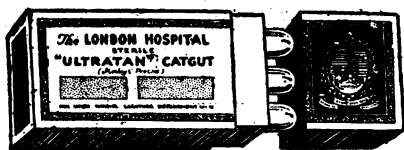




# London Hospital Catgut

*Prepared throughout at the London Hospital.*

In the preparation of the usual 5 ft. and 10 ft. lengths of "London Hospital" Catgut, 14 in. and 30 in. lengths are left. These lengths are supplied in boxes containing 100 ft. and in sealed glass tubes (ready for immediate use), convenient and economical for general surgery.



**"Ultratan" Catgut**, 10, 20, 30 and 40 day, each tube containing two 14 in. ligatures, all sizes, per box of 12 tubes 10/-

**Plain Catgut**, three 14 in. ligatures in each tube, per box of 12 tubes 10/-

## "Ultratan" and Chromicized Catgut

*DRY, requiring external sterilization.*

100 feet boxes of 14 inch lengths			100 feet boxes of 30 inch lengths		
No.		Per box of 100 ft.	No.		Per box of 100 ft.
No. 4/0	...	6/-	No. 4/0	...	7/-
" 3/0	...	7/-	" 3/0	...	8/-
" 2/0	...	8/-	" 2/0	...	9/-
" 0	...	9/-	" 0	...	10/-
" 1	...	11/-	" 1	...	12/-
" 2	...	14/-	" 2	...	15/-
" 3	...	17/-	" 3	...	18/-
" 4	...	19/-	" 4	...	20/-
" 5	...	20/-	" 5	...	21/-
" 6	...	21/-	" 6	...	21/-

Sizes 5/0 and 6/0 made to order.



## Plain Non-hardened (Raw) Catgut

*DRY, requiring external sterilization.*

100 feet boxes of 14 inch lengths			100 feet boxes of 30 inch lengths		
No.		Per box of 100 ft.	No.		Per box of 100 ft.
No. 4/0	...	4/-	No. 4/0	...	4/-
" 3/0	...	4/6	" 3/0	...	5/-
" 2/0	...	5/-	" 2/0	...	6/-
" 0	...	5/6	" 0	...	7/-
" 1	...	7/-	" 1	...	8/-
" 2	...	10/-	" 2	...	11/-
" 3	...	12/-	" 3	...	13/-
" 4	...	14/-	" 4	...	15/-
" 5	...	15/-	" 5	...	16/-
" 6	...	15/-	" 6	...	16/-

Sizes 5/0 and 6/0 made to order.

*Sole Distributors:*

**Allen & Hanburys Ltd., 48 Wigmore Street, W.1.**

## USE YOUR CAR WHILST WE ARE SELLING IT FOR YOU.

¶ You may or may not be desirous of selling your car at present, but doubtless it would be very acceptable to you to be provided with opportunities to sell it at a price you yourself consider favourable. Our organisation makes this possible, and the only cost to you is a registration fee of one guinea per annum.

¶ As a member of the medical profession, whose calling imposes daily use of a car under all weather conditions, you will realise that a "new car every year" is a resolve, ideal in theory, but not so easy to put into practice. Our organisation and continuous service make this possible. It enables you to sell your car at your own price, and to get another new car when it is most convenient for you to do so.

¶ Safeguard yourself against the undue depreciation of your car by registering particulars of it with us, when we will keep you advised from time to time of prospective purchasers at your price, leaving it to you to communicate with them if you wish.

¶ A registration form and full particulars will be sent post free per return upon request.

### "Service with Security"

THE MOTOR SALES REGISTRY, LIMITED, 11, WARWICK ROW, COVENTRY.

## OVERFATNESS

Dr. WILLIAM T. CATHELL'S TREATMENT.

**Reliable and Harmless.**

Doctors are frequently asked by their patients for something to make them thinner, and Dr. WILLIAM T. CATHELL'S method shows how this may be done safely and gradually.

*A verbatim copy of a Lecture, by William T. Cathell, A.M., M.D. Baltimore, on Overfatness, will be sent free on application to*

**ALFRED BISHOP, Ltd.,** Manufacturing Chemists, **48, SPELMAN STREET, LONDON, E. 1.**

## PNEUMOSAN IN TUBERCULOSIS.

In every stage of Tuberculosis, where no impression can be made with routine or any other known treatment, use Pneumosan (Amyl-thio-trymethyamine), a homogeneous chemical substance, with a clinical record of 10 years. Pneumosan is well tolerated and has rapid inhibitory action; it is alterative and phagocitic. Well indicated in early and advanced cases and considered by a large number of Physicians to be the most reliable therapeutic agent in every type of Tuberculosis.

The Medical Superintendent of Birmingham General Dispensary, writes: "During a period of 18 months I treated 103 cases of Pulmonary Tuberculosis. A large number were in a very advanced stage owing to the fact that Pneumosan was tried as a forlorn hope, where no other treatment seemed applicable. I obtained most striking results in early as well as in very advanced cases. A great point in its favour is that I have never known any untoward effect to follow its administration."

Pneumosan is issued in vials containing 20 injections at 15/6 and in boxes of 10 ampoules at 10/.

Sole Manufacturers:

**THE PNEUMOSAN Company, 307, Euston Road, LONDON, N.W. 1.**

Telephone No.: MUSEUM 1131.

Telegraphic & Cable Address: "NUMOCON, EUSROAD, LONDON."

Agents for Burma: E. M. de SOUSA & Co., 271, Dalhousie Street, Rangoon.

Agents for Transvaal: SIVE BROTHERS & KARNOVSKY, LTD., Kerk & Frazer Streets, Johannesburg.

## A NEW ELECTRIC MICROSCOPE LAMP

(Rd. No. 687872)

*with opalite bulb giving critical illumination.*

### SPECIALLY DESIGNED FOR RESEARCH WORK

Price, including two iris diaphragms, aplanatic condenser, light filter holder, flexible wire, and wall plug,  
**£12 10s.**

*Descriptive pamphlet on application to the Makers:—*

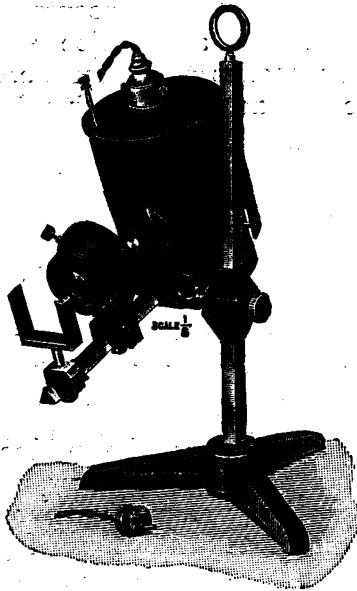
**OGILVY & CO.,**

48, Bloomsbury Square, London, W.C.1.

*Optical and Mechanical Repairs  
executed on the Premises.*

British Agents for E. LEITZ, Wetzlar.

Microscopes, Microtomes, Photomicrographic Apparatus, Epidiascopes, Projection-Drawing Apparatus, Prismatic Binoculars, etc.



## A GREAT BOON TO GENTLEMEN

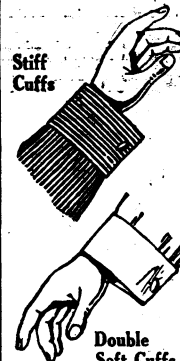
*Always Clean  
Unfrayed Cuffs*

3 Pairs of Detachable Cuffs with the Lyndals Shirt (Soft or Stiff).

You can change your soiled cuffs as easily as you change your collar. With the

## LYNDALS SHIRT

(Patent No. 137025).



and its 3 pairs of Detachable Cuffs you never have soiled or frayed cuffs. Every wearer is delighted with the comfort of clean cuffs every day

The Lyndals Shirt is saved unnecessary washing, it is not excessively laundryworn only because of soiled cuffs, and therefore outlasts any two ordinary shirts of equal quality.

Smart and tasteful patterns in durable Cambrics, Unions, Zephyrs, and Ceylons

PRICES. 8/6, 10/6, 12/6, and upwards Post FREE. Stiff Cuffs 2/- extra.

Call or write for Patterns and Illustrated Price List. Please state if Cotton or Woolen Patterns. Enclose 4d. stamps for Postage. We have no shop. Lift to Showrooms.

**LYNDALS LTD.,**

(Dept. B.M.) Old Bond Street House, 6, 7, 8, Old Bond Street, London, W.

## DIABETIC FOODS

Recent research in the treatment of diabetes has been productive of much new data.

Unfortunately the knowledge acquired has had little practical value for the general practitioner. The limitation of starchy foods and sugar, within the tolerance of the patient, remains the principal factor in treatment.

CALLARD & CO. maintain the high standard of their products, which has always distinguished them.

SAMPLES FREE TO DOCTORS AND PATIENTS.

**CALLARD & CO.,** Food Specialists, 74 (M.J.) Regent Street, London, W.1.

## CATALOGUE OF SECONDHAND SURGICAL INSTRUMENTS OSTEOLOGY, MICROSCOPES, POST FREE.

Telephone  
CITY 1708.

Half Sets of Osteology, Articulated Skeletons and Disarticulated Skulls, Secondhand Surgical Instruments, Osteology, and Microscopes bought, sold and exchanged.

**MILLIKIN & LAWLEY, 165, STRAND, LONDON, W.C.2.**



### The Latest Aurorascope Novelty.

## (DEES) PNEUMATIC AURORASCOPE EAR SPECULUM.

We absolutely guarantee a Novice can see the Umbo, Triangle of Light, Handle of the Mallius, and oscillate the Tympanum.

A Specialist writes: "This new Attachment to the Aurorascope is a masterpiece of ingenuity and simplicity."

SPECIAL ATTACHMENT TO THE AURORASCOPE

... PRICE £2 - 2 - 0

The Instrument complete in Case with Battery and two extra size Ear Specula, price £23/3/0; postage 1/8 U.K.

**AURORASCOPE CO., LTD., Fulwood House, Fulwood Place, Holborn, W.C.1.**  
(next Chancery Lane Tube Station) where demonstrations are given daily.



The "A.B.C." of DIET.  
Because it is *very rich in the Vitamins*  
'A,' 'B,' & 'C,' there is no tonic  
food more serviceable in  
wasting diseases.

# 'ROBOLEINE'

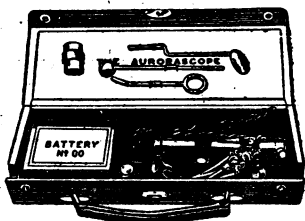
**Delicate children say there is no tonic food that they find so palatable.**

**OPPENHEIMER, SON & CO., Limited,**  
179, QUEEN VICTORIA STREET, LONDON, E.C. 4.

Samples and Literature on application.

THE SPECIAL  
HOSPITAL AND  
COLONIAL  
PATTERN  
OUTFIT.

Price £5-10-8  
or in  
Solid Leather  
Case £4-4-0  
Postage in  
U.K. 1/6.



## DEES AUROSCOPE (REG. PATENT)

The G.P. POCKET THROAT AND EAR OUTFIT.  
A NOVICE can see at the bedside, in daylight, the Vocal Cords, Drum of the Ear, Optic Disc, Transillumination of the Antrum and Sinuses, and everything in the range of Rhinology, Ophthalmology, Laryngology, and Aural Surgery. Certified correct by Specialists and Leaders of the Profession.  
PRICES: Best Quality Outfit in Silk-lined Case or Leather Wallet with Spherical Lens Attachment complete and recommended. £2/2/0. Registered Post 1/- in U.K.  
Second Quality, without Magnifying Lens Attachment, £1/1/0. Reg. Post, 6d.  
Adaptor, Flex Wire (Conversion), including Special Battery for four hours permanent lighting, 12/8.  
**AUROSOCPE CO., LTD., Fulwood House, Fulwood Place, Holborn, W.C. 1.**  
(next to Chancery Lane Tube Station) where demonstrations are given daily.  
STOCKED BY ALL SURGICAL INSTRUMENT MAKERS.

As the demand for the "AUROSOCPE" exceeds the supply we cannot send goods on approval.

## DISPENSING BOTTLES

Also VIALS and BLUE POISON.

FURTHER REDUCED PRICES.

**I. ISAACS & CO.,**  
North London Glass Bottle Works,  
108, MIDLAND ROAD, LONDON, N.W. 1.  
ESTABLISHED 100 YEARS.  
Phone: Museum 4209. Telegrams: "Isaglasbot, Kincross, London."

## BRASS NAME PLATES

For the Profession.

The Plates are manufactured in stout metal, deeply engraved, mounted on polished mahogany blocks with fastenings ready for fixing.

**COOKE'S (Finsbury), Ltd.,**  
Brass Plate Engravers, Memorial Brasses, &c.  
FINSBURY PAVEMENT HOUSE, LONDON, E.C. 2.  
Telephone: London Wall 2446 (3 Lines).  
And at Walbrook, E.C., and Bradford, Yorks.  
SEND FOR ILLUSTRATED CATALOGUE.

## The SIXTY Policy

is the ideal  
contract for Medical Men.

Write for particulars to the  
**NATIONAL PROVIDENT INSTITUTION,**  
48 GRACECHURCH STREET, E.C. 3.

## HAVE YOUR SUIT TURNED

For Free  
Descriptive Booklet  
write  
**THE INVISIBLE REPAIR CO.**  
St. Martin's Court, Ludgate Hill, London, E.C. 4.  
(Dept. M. J.) (ONLY ADDRESS)

## PURE OLIVE OIL SOAP

MADE AT  
Abrahams Vineyard, Jerusalem.

SIX SHILLINGS a dozen—Postage extra.

Apply Secretary, 75, Brook Green, W. 6.

## BRASS NAME PLATES

Send for List 18a.

## MEMORIAL TABLETS

Send for Book 18.

**F. OSBORNE & CO., Ltd.,**  
27 EASTCASTLE ST., LONDON W. 1.

## DROITWICH BRINE BATHS

for RHEUMATISM, &c.  
WARNING.—The Public are warned that the  
TREATMENT CAN ONLY BE OBTAINED AT  
DROITWICH IN THE NATURAL BRINE.  
Treatments include Nauheim Baths and Aeration  
Baths (modern adaptation of celebrated French  
Whirlpool System).  
LOVELY HOLIDAY DISTRICT. GOOD HOTELS, &c.  
Illustrated Booklet post free from  
**J. H. HOLLYER,**  
15, Corbett Estate Offices, Droitwich (Worce.).  
SPECIAL FACILITIES TO MEDICAL MEN.

## North of England.—

Tuberculosis officer, wife certificated nurse, wishes as Resident Patient CHILD with early phthisis or surgical tuberculosis (full Alton treatment). Bracing country, governess; outdoor shelter, pretty garden next farm. Highest references given and received. — Address, No. 2906, BRITISH MEDICAL JOURNAL Office, 429, Strand, W.C. 2.

## Trained Nurse would Receive

3 or 4 YOUNG CHILDREN in her house in lovely part of Devon. Special attention given to diet. Large garden and play field. Own poultry and eggs. Vicar and doctor's recommendations. Moderate terms. — SMITH, Springfield, Seaton, Devon.

## Trained Nurse has Vacancy

for PATIENT requiring care. Slight mental, nerve, or chronic case. Exceptionally well-appointed house near London. Delightful grounds. Highest references. From 7 guineas weekly. — Address, No. 2727, B.M.J. Office, 429, Strand, W.C.

## WYE HOUSE, BUXTON.

For the treatment of Ladies and Gentlemen mentally afflicted. Voluntary Boarders received. Situated 1,200 ft. above sea level, facing S.; 14 acres of ground. — For terms apply to the Resident Medical Superintendent, W. W. HORTON, M.D.  
Nat. Tel. 130.

## ST. GEORGE'S RETREAT,

Burgess Hill, Sussex.

An old-established licensed house under the management of the "Augustinian Sisters," for the treatment of LADIES MENTALLY AFFLICTED. Grounds nearly 300 acres. Drives and motoring. Marine, Brighton Residence for change. Voluntary boarders taken. Separate Villa for Feeble-Minded cases. Visiting Physicians. London 1½ hours. — For terms apply to the Superiores.

Telephone: (Post Office 90).  
Telegrams: "Wivelsfield Green."

## HEIGHAM HALL, NORWICH.

Telephone: For Upper and Middle Classes. 80 Norwich.

A Private Home for Cure of Ladies and Gentlemen suffering from Nervous and Mental Diseases. Extensive pleasure grounds. Private Suites of Rooms with Special Attendants available. Boarders received without certificates.

Terms from 4 guineas weekly. Patients sent for.  
Apply, Dr. G. STEVENS POPE or Mrs. POPE, Resident Licensees.

## CHEADLE ROYAL, CHEADLE, CHESHIRE.

This Hospital for MENTAL DISEASES with its seaside branch Glean-y-Don, Colwyn Bay, is for the Treatment of PRIVATE PATIENTS of the UPPER and MIDDLE CLASSES. Voluntary Boarders received.

For terms, etc., apply to the Superintendent, J. SUTCLIFFE, M.R.C.S., or he may be seen at 72, Bridge Street, Manchester, on Tuesdays and Fridays from 2 to 3. Telephone: No. 208 Cheadle Hulme.

FOR THE

## TREATMENT OF LADIES

suffering from Mental Affections.  
**THE MOAT HOUSE, TAMWORTH, STAFFS.**

Telephone: 108 Tamworth.

For terms, &c., apply to the Licensees CLAUDE HOLLINS; or Mrs. S. A. MICHAUX (Resident), or to the Medical Attendant, Dr. LOWSON.

Telephone & Telegrams: "Haynes, Brentwood, 45."

## Littleton Hall, Brentwood, Essex.

Large grounds, 400 ft. above sea. HOME for LADIES Mentally Afflicted. Voluntary Boarders received. Stations: Brentwood, 1 mile; Shenfield, 1 mile; Liverpool Street, 28 minutes. — Apply, Dr. HAYNES.

## STRETTON HOUSE,

Church-Stretton, Shropshire.

A Private HOME for the treatment of Gentlemen suffering from Mental diseases. Bracing hill country. See "Medical Directory," p. 2218. — Apply to Medical Superintendent. Phone, 10 P.O. Church-Stretton.

## Grove House, All Stretton,

Church Stretton, Shropshire.

A Private HOME for the care and Treatment of a limited number of ladies mentally afflicted. Climate healthy and bracing.  
Medical Superintendent, Dr. MCCLINTOCK.



# ALLANTON HOUSE,

## NEWMAINS, LANARKSHIRE.

Devoted to the care of LADIES of the upper classes only. The estate is extensive with bracing air. It is very retired and well situated for the treatment of Neurasthenic, Nervous and Senile Conditions.

References: Prof. GEORGE ROBERTSON, Dr. RUSSEN RUSSELL, Dr. OSWALD and others.

Terms and particulars on application to "Superintendent, Allanton House, Newmains, Lanarkshire.

Nearest Station: Hartwood, Cal. Rly.

### INEBRIETY.

**CALRYMPLE HOUSE, RICKMANSWORTH, HERTS.**  
For the treatment of gentlemen under the Act and privately. Established 1883 by an Association of prominent medical men and others for the study and treatment of Inebriety.  
For particulars, apply to F. S. D. Hogg, M.R.C.S., &c., Resident Medical Superintendent.  
Telephone: 16 Rickmansworth.

### BARNWOOD HOUSE

#### HOSPITAL FOR MENTAL DISEASES

#### BARNWOOD near GLOUCESTER

Telephone: No. 7, Barnwood.  
Exclusively for PRIVATE PATIENTS of the UPPER and MIDDLE CLASSES.

This Institution is devoted to the care and treatment of persons of both sexes at moderate rates of payment.  
Voluntary boarders not under certificates are admitted.

Under special circumstances the rates of payment may be reduced by the Committee.

The MANOR HOUSE for Ladies only, which is entirely separate from the Hospital and standing in its own grounds, is utilised exclusively for voluntary patients.

For further information apply to ARTHUR TOWNSEND, M.D., the Medical Superintendent.

### DUFF HOUSE,

#### BANFF, SCOTLAND.

**TREATMENT OF DISORDERS OF THE STOMACH AND INTESTINES, INCLUDING TROPICAL DISEASES, HEART DISEASE, DIABETES**

and other complaints which need skilled chemical, bacteriological, protozoological or cardiographic investigation and dietetic treatment.

The House is fitted with laboratories, X-Ray Installation, Medical Baths, Central Heating, and Lifts.

The climate is mild, and the rainfall the lowest in Scotland.

Apply, THE SECRETARY, Duff House, Banff.

### CITY OF LONDON

#### MENTAL HOSPITAL,

#### DARTFORD, KENT.

Under the Management of a Committee of the Corporation of the City of London.

PRIVATE PATIENTS are received at a weekly charge of Two Guineas and upwards.

Apply to the MEDICAL SUPERINTENDENT.

### BISHOPSTONE HOUSE, BEDFORD.

PRIVATE HOME for MENTALLY AFFLICTED LADIES. Ten only received. Terms, 6 gns. weekly. Apply, Medical Officer, or Mrs. PEELE. Telephone 708.

### ST. ANDREW'S HOSPITAL

#### FOR MENTAL DISEASES,

#### NORTHAMPTON.

President—

The Right Hon. the EARL SPENCER, K.G.

This Registered Hospital receives for treatment PRIVATE PATIENTS of the UPPER and MIDDLE CLASSES of both Sexes. The Hospital, its branches (including a Seaside Home at Llanfairfechan, North Wales), and its numerous villas are surrounded by nearly a thousand acres of Park and Farm.

Voluntary Boarders without Certificates received.

For particulars apply to DANIEL F. RAMBAUT, M.A., M.D., the Medical Superintendent.

TELEPHONE No. 56.

### TREATMENT OF INEBRIETY AND THE MORPHIA HABIT, ETC.

### CAPEL LODGE RETREAT & SANATORIUM,

#### Near FOLKESTONE.

Situated on the SUNNY CLIFFS OVERLOOKING THE SEA, for the Treatment and Cure of Alcoholic and Drug Inebriety—14 acres of private grounds. Billiards, &c., &c.  
Terms from 4 guineas weekly. For full particulars apply E. NORTON, M.D., Capel Lodge, near Folkestone.

### THE ROYAL EARLSWOOD INSTITUTION

#### FOR MENTAL DEFECTIVES, REDHILL, SURREY.

(FORMERLY THE EARLSWOOD ASYLUM.)

FOR THOSE REQUIRING CONTROL with EXPERT SUPERVISION, and needing SPECIAL TRAINING in useful Occupations, SCHOOLS, FARMING, and various TRADE WORKSHOPS.

ALL outdoor games, EXCELLENT BAND by Male Staff.

Apply to the Secretary, Mr. HARRY HOWARD, 14-16, Ludgate Hill, London, E.C. 4. Phone: City 529.

### THE COPPICE, NOTTINGHAM.

#### HOSPITAL FOR MENTAL DISEASES.

President: The Right Hon. the EARL MANVERS.

This Institution is exclusively for the reception of a limited number of Private Patients of both sexes, of the Upper and Middle Classes, at moderate rates of payment. It is beautifully situated in its own grounds on an eminence a short distance from Nottingham, and from its singularly healthy position and comfortable arrangements, affords every facility for the relief and cure of those mentally afflicted.

For terms, &c., apply to the Medical Superintendent.

### Home

for the care and treatment of

### Mentally Afflicted Ladies.

### OTTO HOUSE,

47, North End Rd., West Kensington, W.14.

The Home stands in large grounds close to West Kensington Station.

For Terms, apply to Miss BRODIE, Resident Lady Superintendent.

Telephone: Hammersmith 1004.

MRS. SUTHERLAND,  
(Licensed Proprietress.)

### THE FLOWER HOUSE

#### BECKENHAM LANE, S.E. 6.

Telephone: BROMLEY 57.

A PRIVATE HOME of the highest class for Gentlemen suffering from Mental and Nervous Disorders. Voluntary Patients received. A beautifully furnished Mansion. Twenty-five acres of well timbered grounds, including unrivalled flower gardens. Recently officially approved by the Ministry of Pensions as a Home for ex-officers.

Billiard-room, Gymnasium, Concert Hall, and Electrophone.

For terms and further particulars apply ALFRED E. PRICE, M.D., M.S., Medical Superintendent.

### SPRINGFIELD HOUSE

#### Near BEDFORD.

(Telephone No. 17.)

A PRIVATE HOME FOR MENTAL CASES.

Ordinary Terms, Five Guineas per week (including Separate Bedrooms for all suitable Cases without extra charge).

For forms of admission, &c., apply to the Drs. BOWER, as above, or at 5, Duchess Street, Portland Place, W. 1., on Tuesdays, from 4 to 5.

### "Telegrams, RELIEF, OLD CATTON."

### THE GROVE, OLD CATTON.

#### NORWICH.

A High-class Private Nursing Home for Ladies desiring Curative Treatment for Nervous Affections. Hysterical and Borderland Cases in the early stages, and those suffering from insipient mental trouble are received as Voluntary Boarders. Apply to the Misses MCINTOCK, or to Dr. S. BARTON, 34, Surrey Street, Norwich, Visiting Physician.

### FENSTANTON,

#### CHRISTCHURCH ROAD,

#### STREATHAM HILL, S.W. 2.

A Private HOME for the Care and Treatment of a limited number of Ladies with Mental and Nervous Disorders.

Large Mansion with 12 acres of ground. (See Medical Directory, pp. 2208).—Apply, J. H. EARLS, M.D., Resident Physician. Tel.: Brixton 175.

### THE GRANGE,

#### NEAR ROTHERHAM.

A HOUSE licensed for the reception of a limited number of ladies of unsound mind. Both certified and voluntary patients received. This is a large country house with beautiful grounds and park, 5 miles from Sheffield. Station, Grange Lane, G.C. Railway, Sheffield. Telephone No. 34, Rotherham. Resident Physician—GILBERT E. MOULD, L.R.C.P., M.R.C.S. Consulting Physician—CROCHLEY CLAPHAM, M.D., F.R.C.P.E.

### BOREATTON PARK,

#### BASCHURCH, SALOP.

A first-class Country Mansion especially adapted for the reception of a limited number of Ladies and Gentlemen mentally affected.

For particulars, apply Dr. SANKEY.

### LONDON LOCK HOSPITAL,

#### DEAN STREET and HARROW ROAD, W.

Founded 1746.

PRIVATE WARDS for PAYING PATIENTS of both sexes.—For particulars apply to H. J. EASON, F.C.I.S., Secretary. Tel.: No. 3366 Paddington.

# "HYGEIA" NURSING HOME,

## VENTNOR, ISLE OF WIGHT.



Palms growing near "Hygeia."

"Hygeia" Nursing Home is beautifully situated. Ventnor has probably the most equable climate in England. The Home is sheltered from the North and East by the downs and obtains the maximum amount of sunshine. It was specially designed for a Nursing Home in 1903, and owing to its great success was enlarged and came under the special interest of the late Sir Victor Horsley.

It has now been re-opened for the treatment of those bronchitic types of chest trouble, tubercular and others, which do so well with a maximum amount of sunshine, and is therefore particularly suitable for bed cases of "ante" or "post" sanatorium patients.

The Home contains upwards of 16 large rooms with balconies, with large and up-to-date bathrooms, etc. A lift connecting all floors, central heating, electric lighting.

Every care is taken to see that diet is suited to the needs of each individual patient, and vegetables and fruit are obtained from the gardens attached to the Home.

A Doctor is always at hand in cases of emergency, and trained nurses are on duty night and day.

Ventnor is 92 miles from London and is reached in about four hours.

For medical references, terms, etc., apply to the Secretary. 'Phone: 29 Ventnor.



## YARROW CONVALESCENT HOME BROADSTAIRS.

For CHILDREN of WELL-EDUCATED PEOPLE  
OF VERY LIMITED MEANS

100 Beds. Boys, ages 4 to 12. Girls, ages 4 to 14.

Charge 10/- a week for each child.

This Fee is subject to addition or deduction according to Parents' means.

The usual stay is four weeks, but some wards are reserved for serious cases requiring special treatment, and for these a lengthened stay may, under some circumstances, be granted, and the age limit raised to 14 for Boys and 16 for Girls.

The Home faces the sea, and is open all the year, being as well adapted for winter as for summer residence.

PARTICULARS CAN BE OBTAINED FROM THE SECRETARY,  
116, VICTORIA STREET, WESTMINSTER, LONDON, S.W. 1.

## THE OLD MANOR, SALISBURY.

TELEPHONE 51.

A PRIVATE HOSPITAL FOR THE CARE AND TREATMENT OF THOSE OF  
BOTH SEXES SUFFERING FROM MENTAL DISORDERS,

Extensive Grounds. Detached Villas. Chapel. Garden and Dairy Produce from own Farm.  
Terms very moderate. Illustrated Brochure on application to The Secretary.



## NORTHWOODS HOUSE, WINTERBOURNE, near BRISTOL.

For PRIVATE TREATMENT OF MENTAL DISEASES.

Situated in a large park in a healthy and picturesque locality, easily accessible by rail via Bristol, Winterbourne, Patchway, or Yate Stations. Uncertified Boarders received.—For further information see Medical Directory, page 2215. Terms moderate. Apply to Dr. J. D. THOMAS, Resident Physician and Licensee, for full particulars.

## CAMBERWELL HOUSE,

33, PECKHAM ROAD,  
LONDON, S.E.

Telegrams: "Psycholia, London."

Telephone: New Cross 1057.

For the Treatment of Mental Disorders.

Completely detached villas for mild cases. Voluntary Boarders received. 20 acres of grounds, including extensive allotments on which gardening is encouraged. Tennis, croquet, squash racquets, and all indoor amusements. Daily Services in Chapel.

Senior Physician: FRANCIS H. EDWARDS, M.D., M.R.C.P. An Illustrated Prospectus, giving full particulars and terms, may be obtained on application to the Secretary.

HOVE VILLA, BRIGHTON.—A Convalescent Branch of the above to which all Suitable Patients may be sent on Holiday.

## HAYDOCK LODGE, Newton-le-Willows, LANCASHIRE

A PRIVATE MENTAL HOSPITAL FOR THE UPPER AND MIDDLE CLASSES ONLY, EITHER VOLUNTARY, OR UNDER CERTIFICATE.

Patients treated and classified according to their social and mental condition. Terms from 22 2s. 0d. Private apartments on special terms. Established for 60 years. Under the same management 25 years. Recovery rate 50 per cent. Situated midway between MANCHESTER and LIVERPOOL. Two miles from Newton-le-Willows Station on the L. & N. W. Railway, connecting it with all parts.

Medical Staff.

Resident Medical Proprietor CHARLES T. STREET, M.R.C.S., L.R.C.P., LIVERPOOL: 47, Rodney Street. MANCHESTER: Winter's Buildings, St. Ann's St.  
Resident Medical Superintendent J. C. WOOTTON, M.R.C.S. (ENG.), L.R.C.P. (LOND). Dr. STREET. Thursday: 2 till 4. Dr. P. G. MOULD; Dr. G. E. MOULD, Tuesday and  
Visiting & Sir JAMES BARR, LL.D., M.D., F.R.C.P., 72, Rodney St., Liverpool. Telephone 2456 Royal. Thursday 12 to 1.30. Telephone 7611 Manchester  
Consulting } G. E. MOULD, Physician for Mental Diseases to the  
Physicians } G. E. MOULD, Sheffield Royal Hospital, The Grange, Rotherham.  
admission apply Resident Proprietor, Haydock Lodge, Newton-le-Willows. Tele. "STREET, Ashton-in-Makerfield." Tel. 11 Ashton-in-Makerfield.

# THE DEESIDE SANATORIA IN SCOTLAND

FOR THE OPEN-AIR TREATMENT OF  
PULMONARY TUBERCULOSIS and ALLIED DISEASES

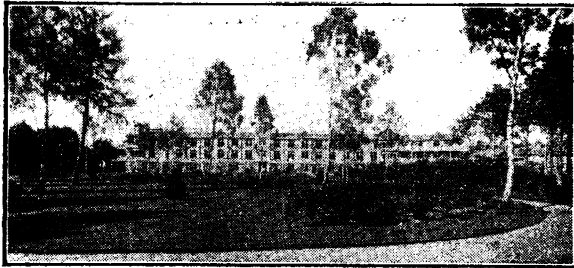
At BANCHORY and MURTLE.

Medical Director - - DAVID LAWSON, M.A., M.D., F.R.S.E.

These Sanatoria are situated amongst **Ideal Surroundings** in **Middle Deeside**, the reputation of whose **Climate** in the treatment of Lung Diseases is well established.

Both Institutions are well equipped with **Research Laboratory, Throat Room, Dental facilities,** and powerful **X-Ray Plant. Full Day and Night Nursing Staffs** are employed.

**Special Treatment** by artificial **Pneumothorax** (with X-ray Control), the various **Tuberculins**, and **Autogenous Vaccines**, etc., are employed in suitable cases without extra charge.



## NORDRACH-ON-DEE

At BANCHORY, near BALMORAL.

Apply—

Dr. IAN STRUTHERS STEWART.

## TOR-NA-DEE SANATORIUM

AT MURTLE.

Senior Physician - - J. M. JOHNSTON, M.B., Ch.B.Ed., D.P.H.

Assistant Physician - - JAMES LAWSON, M.D.(Ed.), M.R.C.P.E.

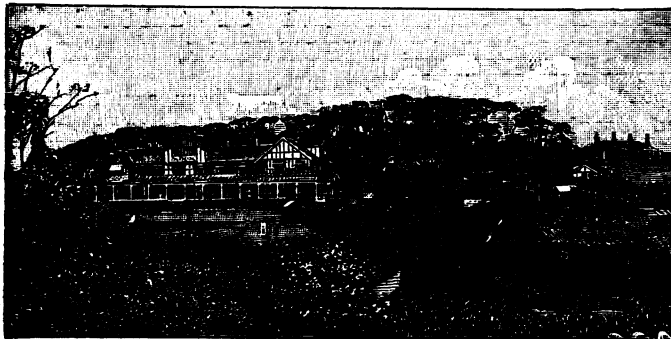
Junior Physician - - A. C. FOWLER, M.B., Ch.B.(Aberd.).

Officers recommended by the Scottish Branch of the British Red Cross Society obtain priority in regard to admission. This Branch of the Society is prepared to contribute £1 11s. 6d. per week towards paying the fees of Officers whose admission meets with their approval.

Apply Secretary, Sanatorium, Murtle, Scotland.



## MUNDESLEY SANATORIUM.



Specially built for the Treatment of Pulmonary and other forms of Tuberculosis. Aspect S.S.W., on a carefully chosen site. Pure, bracing air. High sunshine record. One mile from the coast. Electric light throughout. X-ray installation. Full day and night Nursing Staff.

Resident Physicians:

S. VERE PEARSON, M.D.(Camb.), M.R.C.P.(Lond.).

GEOFFREY LUCAS, B.A.(Camb), M.D.(Durham).

L. WHITTAKER SHARP, M.B.(Camb).

Apply Secretary, Sanatorium, Mundesley, Norfolk.

## GROSVENOR SANATORIUM

For the Open-air Treatment of Pulmonary Tuberculosis.

APPROVED BY MINISTRY OF HEALTH.

Specially built in delightful surroundings. Sheltered walks in grounds of 260 acres. 57 miles from London. Good train service.

The Institution is equipped with X-Ray Installation, &c. Artificial Pneumothorax Treatment, Tuberculins and Vaccines are given in suitable cases.

**FEES:—56/- per week.**

Medical Superintendent - - J. ABERDEIN MILNE, M.B., Ch.B., D.P.H.

Assistant Medical Officers - - H. J. TWIGG, M.B., C.M.; A. Y. MILNE, M.B., Ch.B.

For further particulars apply The Secretary, Grosvenor Sanatorium, Kennington, Nr. Ashford, Kent.

## PALACE SANATORIUM, MONTANA-SUR-SIERRE

### Tuberculosis Cure Station, 5,000 feet high, SWITZERLAND.

Accommodation for 100 Patients.

Principal Resident Medical Officer: BERNARD HUDSON, M.D.(Cantab.), M.R.C.P.,  
Late Physician to the Queen Alexandra Sanatorium, Davos Platz.

Full particulars from the Secretary, 5, Endsleigh Gardens, London, N.W.1

## MENDIP HILLS SANATORIUM

Specially built, facing South. 300 acres of Sanatorium grounds—meadow and woodland; sheltered pine avenues. Altitude 800 feet, magnificent view for miles south; hot water radiators and electric light.  
Special features are breathing and graduated exercises, and continuous inhalation. Individual attention.  
For particulars apply SECRETARY, Hillgrove Wells, Somerset. Resident Physician: Dr. C. MUTHU.

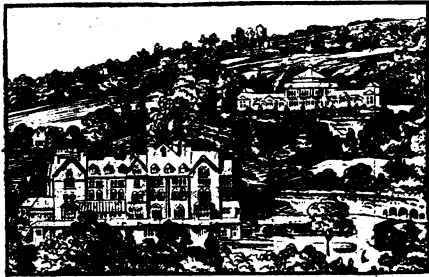
## DARTMOOR SANATORIUM 750 FEET.

Tuberculin used only for suitable cases. Within easy reach of the moor. X-Ray Apparatus recently installed. Resident Physicians: C. H. BERRY, M.R.C.S., L.R.C.P.; E. A. CRICLOW, M.R.C.S., L.R.P.C.—For particulars apply C. H. BERRY, M.R.C.S., Sanatorium, Chagford, Devonshire. Telephone: 11, Chagford.

## ROYAL HYDROPATHIC ESTABLISHMENT

(Connected with the famous Thermal Mineral Springs),

MATLOCK BATH, DERBYSHIRE.



WRITE FOR PROSPECTUS.

Excellent suites of baths for ladies and gentlemen, comprising Turkish, Russian, Thermal Mineral Water and Medicated Baths (Nauheim, Sulphur, Brine, Pine, &c.), Aix and Vichy Douches, Massage, and every kind of Electrical Treatment. Staff of Trained Nurses, Masseuses, Masseurs, and skilled attendants. Bracing climate. Perfect sanitation. Central heating, Electric lighting. Over 20 acres of grounds, games, tennis, bowls, &c.

IDEAL FOR RHEUMATIC AFFECTIONS, CONVALESCENCE and "REST" CURE.

Resident Physician: Dr. C. T. GASKING.

Telegrams: "Royal, Matlock Bath."

Telephone: Matlock 184.

## SMEDLEY'S HYDRO, MATLOCK

LARGEST AND MOST COMPLETE. *Established 1853*

Resident Physicians: { G. C. R. HARBINSON, M.B., B.Ch., B.A.O.(R.U.I.)  
{ R. MACLELLAND, M.D., C.M.(Edin.)

Unrivalled suites of Baths for Ladies and for Gentlemen, including Turkish and Russian Baths, Aix and Vichy Douches, Massage and Weir Mitchell treatment, an Electric Installation for Baths and Medical purposes, Dowsing Radiant Heat, D'Arsonval High Frequency, Roentgen X-Rays, Nauheim Baths, etc. Special provision for Invalids. Milk from own farm. Large Winter Garden. Night attendance. Rooms well ventilated and all bedrooms warmed in Winter. A large Staff (upwards of 60) of trained Male and Female Nurses, Masseurs, and Attendants.

Prospectus and full information on application to H. CHALLAND, Managing Director.  
Telegrams—"SMEDLEY'S, MATLOCK" Telephone—No. 17.

## BEN RHYDDING HYDRO,

on the Yorkshire Moors, near ILKLEY.

Ideal for Neurasthenia, Convalescence and Rheumatic Affections. The most modern Electrical Treatment and Massage.

For terms, apply MANAGER.

Resident Physician: G. COOPER, M.D.

## PEEBLES HYDRO.

Beautifully situated 600 feet above sea level. Facing South, completely sheltered from North and East. 22 miles from Edinburgh.

All modern Baths, Douches, Massage and Electrical treatments. Resident Physician: K. R. COLLIS HALLOWES, B.A., M.B., B.Ch., B.A.O.

IDEAL HEALTH RESORT.

Electric Light, Central Heating, Electric Lift, three Billiard Tables, Ball Room, Winter Garden, Swimming Bath, Hard and Grass Tennis Courts, Croquet Lawn, Golf Course.

Prospectus from Manager.

**Jersey.—Doctor living in the**  
prettiest part of the island will take RESIDENT PATIENT. Slightly mental case not objected to. Psychotherapy if required.—Address, No. 2800, BRITISH MEDICAL JOURNAL Office, 429, Strand, W.C.

## GRAMPIAN SANATORIUM

KINGUSSIE, INVERNESS-SHIRE.

Specially built for the Open-Air Treatment of Tuberculosis, and opened in 1901. Bracing mountain air. Elevation 860 feet above sea-level. Sheltered situation in pine wood. Graduated walks.

Electric light throughout building and in shelters. Fully equipped X-Ray Plant. Inoculation Treatment available for patients—24 beds. Trained Nurse on duty all night. Terms 5 to 6 guineas per week. Medical Superintendent, FELIX SAVY, M.B., Ch.B. For particulars apply to the Secretary.

## SHROPSHIRE ORTHOPÆDIC HOSPITAL,

OSWESTRY (Station: Gobowen, G. W.R.).

OPEN-AIR WARDS.

PRIVATE WARDS, 5 Gns. per week, exclusive of Surgeon's fees, but inclusive of X-rays, splints, plasters, massage and gymnasium.

A limited number of beds are available in the GENERAL WARDS at 2½ Gns. per week, inclusive.

For particulars apply the Superintendent.

## Neurasthenic, Rest Cure and

CHRONIC CASES are received from 5 guineas weekly in doctor's country home. Golf, tennis, &c. Own poultry, fruit and vegetables. Tel. 194 Chertsey. —Apply, Dr. ALEXANDER, Harcourts, Chertsey.

## NORTHAMPTONSHIRE SANATORIUM,

CREATON, near NORTHAMPTON.

Under the Management of the Committee of the Northampton Branch of the National Association for the Prevention of Tuberculosis.

Exclusively for moderately early cases of Pulmonary Tuberculosis, either sex. Private Patients are received at a charge from 2½ guineas a week. Telephone: 9 CREATON. Apply to the Medical Superintendent.

## BOURNEMOUTH HYDRO.

With finest Sun-lounge and Marine Balcony on the South Coast.

Every kind of Bath.  
Every kind of Massage.  
Every kind of Electricity.  
Every kind of Diet.  
Carlsbad and Vichy Waters, &c.  
High Frequency. Electric Lift.

Prospectus from Secretary. Telephone 341.  
Resident Physician:—W. JOHNSON SMYTH, M.D.

## HARROGATE

The most recent analyses  
of the famed

"OLD SULPHUR" WATER

reveal the presence of  
7'056 parts per 100,000  
of BARIUM.

Cardiac cases sent to  
Harrogate increase in  
number year by year!

List of Medical complimentary facilities,  
Medical and "Lay" Brochures free on  
request to

F. J. C. BROOME, General Manager,  
HEALTH BUREAU,  
HARROGATE.

**BRACING****SUNNY**

**Climatic Resorts at 6,000 ft. in the Pyrenees.**

**FONT ROMEU.**  
**GRAND HOTEL.**

**LUCHON SUPERBAGNERES.**  
**HOTEL DE SUPERBAGNERES.**

**Summer and Winter Seasons.**

Particulars from—The MANAGER, GRAND HOTEL, FONT ROMEU (Pyrenees Orientales);  
The MANAGER, HOTEL DE SUPERBAGNERES, LUCHON (Hte. Garonne); and  
OFFICE FRANÇAIS DU TOURISME (Dept. E), 56, Haymarket, London, S.W. 1.

**SPORTS****RESTFUL**

**Doctor receives in his**  
charming comfortable large well furnished  
residence. PATIENT requiring care, rest-cure,  
supervision. Excellent cuisine. 2 Nurses and Nurse-  
Masseuse, 4 servants, highest refs.—Dr. MEYRICK,  
48, Bunsimore Gardens, S.W. 7. Tel: Kens. 2130.

**MIDDLESEX HOSPITAL**  
**MEDICAL SCHOOL, W.1.**

**PRIMARY F.R.C.S. COURSE**

Classes in **Anatomy and Physiology**  
will commence on JULY 3RD.

The Classes will not meet in August, but  
will resume early in September and continue  
until the date of the Examination.

**ANATOMY, including Embryology.**

MONDAYS, TUESDAYS, WEDNESDAYS,  
THURSDAYS and FRIDAYS at 12 noon.

Members of the Class will be able to use  
the Dissecting Room for the purpose of  
reading with dissected "parts" at any time  
during School hours.

**PHYSIOLOGY.**

MONDAYS, TUESDAYS and THURSDAYS  
in July.

In September, October and November,  
four days a week.

**VIVA VOCE CLASSES** including test  
papers. There will be HISTOLOGY  
CLASSES throughout the Course.

The inclusive fee for both subjects is  
£16 16s. (for one subject £8 8s.)

Intending candidates are reminded that  
it is desirable to join these Classes at the  
commencement of the Course if possible.

For further particulars apply to A. E.  
WEBB-JOHNSON (Dean) C.B.E., D.S.O.,  
F.R.C.S., or to R. A. FOLEY, School  
Secretary.

**Private Classes**  
**Now Being Formed.**

**D.P.H.**

(All Subjects)

**Pathology**

Write to "GRADUATE," No. 1900, *British Medical*  
*Journal*, 429, Strand, W.C. 2.

**Stammering, successfully**  
treated by a Medical Man himself once a  
sufferer, now a Public Speaker.—Address, No. 200,  
BRITISH MEDICAL JOURNAL Office, 429, Strand, W.C.

**LONDON HOMŒOPATHIC HOSPITAL.**  
**POST-GRADUATE SUMMER COURSE**

TIME TABLE—JULY 3 to 14.

Monday, 3rd—10.30 a.m. ....	Dr. J. H. Clarke .....	Hahnemann's Place in Medicine.
4.30 p.m. ....	Dr. E. A. Neatby .....	Clinical Observations on the Menopause with special reference to Treatment.
Tuesday, 4th—10.30 a.m. ....	Dr. Miller Neatby .....	Foundations of Modern Cardiology.
4.30 p.m. ....	Dr. C. H. Eccles .....	A Medical Paper.
Wednesday, 5th—10.30 a.m. ...	Dr. A. Bowie .....	X-Ray Demonstration.
4.30 p.m. ....	Mr. James Johnstone .....	Diagnosis of the "Acute Abdomen."
Thursday, 6th—10.30 a.m. ....	Dr. J. Weir .....	Homœopathic Philosophy. Essentials in Prescribing.
4.30 p.m. ....	Dr. Goldsbrough .....	Medicine and the Mind.
Friday, 7th—10.30 a.m. ....	Dr. D. M. Borland .....	Symptoms that count in Prescribing.
4.30 p.m. ....	Dr. P. Hall-Smith .....	Pain and its Homœopathic Therapeutics.
Saturday, 8th—10.30 a.m. ....	Dr. M. L. Tyler .....	Mental Efficiency with Results of Treatment
Monday, 10th—10.30 a.m. ....	Mr. P. Bernard Roth .....	Lateral Curvature.
4.30 p.m. ....	Dr. Spiers Alexander .....	Commoner Diseases of the Eye, and their Homœopathic Treatment.
Tuesday, 11th—10.30 a.m. ....	Dr. Miller Neatby .....	Heart-block with three Illustrative cases.
4.30 p.m. ....	Dr. G. Burford .....	The Therapeutics of Malignant Disease—Part 1
Wednesday, 12th—10.30 a.m. ...	Dr. E. Bach .....	Causes of Failure in Vaccine Therapy.
4.30 p.m. ....	Mr. James Eadie .....	The Treatment of Hemorrhoids.
Thursday, 13th, 10.30 p.m. ....	Dr. G. Burford .....	The Therapeutics of Malignant Disease—Part 2
4.30 p.m. ....	Dr. J. Weir .....	Homœopathic Philosophy. The Second Prescription.
Friday, 14th—10.30 a.m. ....	Dr. D. M. Borland .....	The Finding of the Remedy.
4.30 p.m. ....	Dr. H. Fergie Woods .....	Case-taking in Children.

Apply to the Dean, Educational Course, London Homœopathic Hospital, Great Ormond Street,  
and Queen Square, W.C. 1.

**STAMMERING, SPEECH DEFECTS.**

BEHNKE METHOD. Estab. 1882. Carried on by  
Miss BEHNKE at 39, Earl's Court Square, S.W. 5.  
PUPILS received into residence, Summer Holidays,  
at Miss BEHNKE's house in the country.

"Thoroughly physiological principles."—*Lancet*.  
"The method is scientifically correct and perfectly  
effective."—*Guy's Hospital Gazette*.

"STAMMERING, CLEFT PALATE SPEECH, LISPIG,"  
2/4, of Miss BEHNKE, 39, Earl's Court Square, S.W. 5.

**POST-GRADUATE COLLEGE**

West London Hospital, Hammersmith, W. 6.

The Hospital Practice is reserved exclusively for  
Post-graduates, and a Reading and Writing Room  
is provided for them. Prospectus from the DEAN.

**F.R.C.S. Edin.**

The TUTORIAL CLASS for the next Examination  
will commence shortly. Correspondence Tuition if  
desired.—For particulars apply FRED. GRAHAM,  
M.D., F.R.C.S. Ed., 16, Mayfield Gardens, Edinburgh.

**ST. MARY'S HOSPITAL**  
**MEDICAL SCHOOL.**

PADDINGTON, W. 2,  
(University of London.)

**FINAL F.R.C.S. COURSE.**

A Course of Instruction in Clinical Surgery,  
Surgical Anatomy, Surgical Pathology and Bacteri-  
ology, with Tutorial Classes, in preparation for the  
Final F.R.C.S. Examination in November next,  
will begin in July.

Time-table and particulars may be obtained from  
the Secretary.

C. M. WILSON (M.C.), M.D., F.R.C.P., Dean.

**ANSTEE PHYSICAL TRAINING COLLEGE,**  
ERDINGTON, BIRMINGHAM,

offers well-educated Women complete Teacher's  
Training in SWEDISH EDUCATIONAL GYMNAS-  
TICS, MEDICAL GYMNASISTICS and MASSAGE,  
DANCING in all its Branches, GAMES, SWIM-  
MING, ANATOMY, HYGIENE, &c.

Three years' Course.

GOOD APPOINTMENTS AFTER TRAINING.

# EDINBURGH POST-GRADUATE COURSES in MEDICINE.

IN CONNECTION WITH THE

## UNIVERSITY AND ROYAL COLLEGES.

1922.

Post-Graduate Courses will be held this year from 14th August to 9th September inclusive, and will comprise (1) a GENERAL MEDICAL COURSE and (2) a GENERAL SURGICAL COURSE. The composite fee for EACH Course will be 10 Guineas for the four weeks or 6 Guineas for either the first or second fortnight.

A series of SPECIAL LECTURES, open to all graduates, will be delivered thrice weekly during the month, on subjects of general Medical and Surgical Interest, including recent advances in treatment.

In addition to the above the following SPECIAL COURSES have also been arranged:—

**During the SUMMER TERM (MAY-JULY)**—CLINICAL THERAPEUTICS and SURGICAL PATHOLOGY; **during the SUMMER TERM (MAY-JULY) and AUTUMN TERM (OCTOBER-DECEMBER)**—DISEASES OF EAR, NOSE AND THROAT, and VENEREAL DISEASES; **during the first fortnight of AUGUST**—DISEASES OF CHILDREN; and **during the period of the GENERAL COURSES (AUGUST-SEPTEMBER)**—EXAMINATION of the BLOOD, VACCINE THERAPY, and PHYSIOLOGICAL and BIOCHEMICAL METHODS for the INVESTIGATION of DISTURBANCES of RESPIRATION, CIRCULATION and METABOLISM.

Further particulars as to the Courses may be had on application to the HON. SECRETARY, POST-GRADUATE COURSES IN MEDICINE UNIVERSITY NEW BUILDINGS, EDINBURGH.

### MEDICAL CORRESPONDENCE COLLEGE

19, WELBECK STREET, LONDON, W. 1.  
Telephone LANGHAM 1166.

PROVIDES HIGHLY SUCCESSFUL ORAL AND POSTAL COACHING FOR ALL MEDICAL EXAMINATIONS.

Special Preparations for all Surgical Qualifications.

F.R.C.S. ENGLAND. CH.M. EDINBURGH.  
(Primary & Final.) M.C. GANTAB.

F.R.C.S. EDINBURGH. M.S. LONDON.  
And all other Surgical Degrees and Diplomas.

† The remarkable success of Students of the Medical Correspondence College at the higher Surgical Examinations is specially noteworthy.

† Both at the Primary and Final F.R.C.S. England the majority of our Students are successful at the first attempt, and Candidates who have failed at these Exams. on several previous occasions get through without difficulty after going through our courses.

† The Surgical Tutors of the College all hold either the M.S. Lond. or F.R.C.S. England, or both, and are highly experienced teachers.

† The Postal Courses are thoroughly clear, concise, and up-to-date, and the test questions are carefully selected from those set at previous Examinations so as to embrace all parts of the subject. By working systematically through the Course the Student is brought up to the examination standard in the minimum time and much unnecessary reading is saved.

### VALUABLE BOOK

"How to Pass the F.R.C.S." free on application to the Secretary.

### M. D. THESIS

(Cambr., Edin., Glasg., Durham, &c.)

SKILLED COACHING, GUIDANCE, and ADVICE,

from Specialist Tutors, in conformity with

the Regulations of the various Universities.

Apply for particulars and free booklet.

"Hints on Writing a Thesis for the M.D. Degree," to the SECRETARY, Medical Correspondence College, 19, Welbeck Street, London, W. 1.

### Seamen's Hospital Society.

### LONDON SCHOOL OF TROPICAL MEDICINE

Endsleigh Gardens, N.W. 1.

Sessions will commence 25th September, 1922, and 8th January, 1923, approximately.

For Prospectus and further particulars apply to: The Secretary, London School of Tropical Medicine, Endsleigh Gardens, N.W., or to the Head Office, Seamen's Hospital, Greenwich, London, S.E.

### UNIVERSITY EXAMINATION POSTAL INSTITUTION.

17, RED LION SQUARE, LONDON, W.C. 1

Telephone: CENTRAL 6313.

Principal: Mr. E. S. WEYMOUTH, M.A. (Lond.)  
POSTAL OR ORAL PREPARATION  
FOR ALL MEDICAL EXAMINATIONS

For Prospectus (24 pages), apply to the Principal.

#### SOME RECENT SUCCESSES.

M.D. (Lond.), 1901-21 (7 Gold Medalists during 1913-21) - 256

M.S. (Lond.), 1902-21 (including 3 Gold Medalists) - 18

M.B., B.S. (Lond.), Final 1906-21 - 131

Primary F.R.C.S. (Eng.), 1906-21 - 87

Final F.R.C.S. (Eng.), 1906-21 (Primary 20, Final 19 successful, 1920) - 64

M.R.C.P. (Lond.), 1914-21 (15 successful in 1920) - 48

D.P.H. (Various) 1906-21 (Including 23 in 1920) - 194

F.R.C.S. (Edin.), 1918-21 - 20

M.R.C.S., L.R.C.P. Final 1910-21 - 148

M.D. (Durh.) (Practitioners) 1906-21 (including 6 during 1918-1920) - 29

M.D. Various. By Thesis. Numerous successes. Preparation also for M.B. (Cantab., etc.), D.P.M., D.O., L.M.S.S.A., Triple Qualification, etc., also Medical Preliminary.

#### ORAL CLASSES

in Anatomy, Physiology, Medicine, Pathology, Midwifery, Gynecology and Surgery always in progress; for M.B., B.S., M.D. Durham; Conjoint Final; F.R.C.S. (Eng. and Edin), etc.

### Small Private Residential

SCHOOL for PHYSICAL and MENTAL DEVELOPMENT of ABNORMAL and BACKWARD CHILDREN. Special attention given to HEALTH; PHYSICAL CULTURE; DIETS, Etc. SEPARATE HOUSE for SENIOR GIRLS with EDUCATIONAL ADVANTAGES.—Particulars, Principal, St. PAUL'S HOUSE, Upper Maze Hill, St. Leonards-on-Sea.

### Liverpool School of Tropical Medicine.

COURSES OF INSTRUCTION (lasting three months) for the Diploma, and also in Veterinary Parasitology, commence about SEPTEMBER 15th and JANUARY 7th.—Prospectus from the Hon. DEAN, School of Tropical Medicine, University of Liverpool.

### Preliminary Examinations.

The COLLEGE OF PRECEPTORS holds Preliminary Examinations for Medical and Dental Students in London and at Provincial Centres in March, June, September, and December. For Regulations, apply to the Secretary, College of Preceptors, Bloomsbury Square, London, W.C. 1.

### SCHOOLS for BOYS and GIRLS, TUTORS for ARMY, and ALL EXAMS.

Messrs. J. & J. PATON, having an intimate, unique and up-to-date knowledge of the BEST SCHOOLS and TUTORS in this country and on the Continent, will be pleased to AID PARENTS in their choice by sending (free of charge) prospectuses and TRUST-WORTHY INFORMATION.

The age of the pupil, district preferred, and rough idea of fees should be given. Phone, write, or call. J. & J. PATON, Educational Agents, 142, Cannon Street, London, E.C. 4. Telephone 5053 Central

### THE ARDMAY HOTEL

Woburn Place, Russell Square, W.C.

IS THE RECOGNISED

### Residence for Medical Men.

Special Inclusive Terms to Students.

F.R.C.S. (Edin.)

A TUTORIAL CLASS for the next Examination commences shortly.

Particulars from CHAS. R. WHITTAKER, F.R.C.S., Anatomical Department Surgeons Hall, Edinburgh

### UNIVERSITY OF CAMBRIDGE.

DIPLOMA IN MEDICAL RADIOLOGY AND ELECTROLOGY.

Six months' Courses of Lectures and Practical Instruction in Part I. (Physics & Electro-Technics), and in Part II. (Radiology & Electrology) will be given in London beginning October 3rd, 1922, and in Cambridge and London beginning January 9th, 1923, for Examination at the end of the Courses.

For further particulars, apply to STANLEY MELVILLE, M.D., Office of B.A.R.P., 12, Stratford Place, London, W., and to F. SHILLINGTON SCALES, M.A., M.D., Medical Schools, Cambridge.

### ROYAL NAVAL MEDICAL SERVICE.

#### SHORT SERVICE SCHEME.

The Admiralty are prepared to accept applications for entry as SURGEON LIEUTENANTS for Short Service in the Royal Navy.

Period of Service—3 years, with option to extend for further twelve months.

Pay—26s. 6d. per diem, or £483 12s. 6d. per ann. Gratuity on discharge—£8 6s. 8d. for each completed month of service, or £100 per annum.

Equipment allowance—£50, payable on joining. Age of candidates—Not to exceed 30 years.

Surgeon Lieutenants on the Short Service Scheme will be considered for transfer to the Permanent Service under certain conditions after six months service.

Regulations for entry and form to be filled up by candidates will be supplied on application to the Medical Director General, 68, Victoria Street, London, S.W. 1.

### Society for Relief of Widows AND ORPHANS OF MEDICAL MEN.

A MEETING of the Court of Directors will be held at 11, Chandos Street, W. 1, on WEDNESDAY, JULY 5th, at 5.30 p.m., to transact the usual business of such Courts.

E. BLACKETT, Secretary.  
11, Chandos Street, Cavendish Square, W. 1, June 21st, 1922.



## Glasgow Post-Graduate MEDICAL ASSOCIATION.

Under the auspices of the Association a comprehensive scheme of POST-GRADUATE TEACHING has been arranged for the summer months.

From MAY till OCTOBER there will be conducted, in the Infirmary and Hospitals in the city, CLINICAL COURSES IN MEDICINE, SURGERY and a variety of SPECIAL SUBJECTS. There will also be available a limited number of whole-time and part-time CLINICAL ASSISTANTSHIPS.

Qualified Medical Practitioners may enrol for the Clinical Courses for periods of one month or more. Clinical Assistants will be enrolled for periods of not less than three months. Syllabus with full particulars will be sent on application to the Acting SECRETARY, Post-Graduate Medical Association, The University, Glasgow.

## Chair of Preventive MEDICINE.

The Trustees of QUEEN'S UNIVERSITY, Kingston, Canada, invite applications for the Chair of Preventive Medicine. The Salary is \$3,500.00 (with consultation privileges) rising to \$4,000.00 on confirmation of the appointment at the end of two years.

Candidates must send letters of application, stating qualifications, accompanied by testimonials (not more than three) to Professor JAMES MILLER, c/o Canadian Bank of Commerce, 2, Lombard Street, London, before July 20th. Arrangements will be made subsequently for personal interviews.

W. E. MCNEILL, Registrar.

## Guy's Hospital Medical SCHOOL.

### GULL STUDENTSHIP.

Applications are invited for the Gull Studentship in Pathology and Allied Subjects, which is now vacant. The Studentship is open to Candidates under 35 years of age who have studied in the Medical School of Guy's Hospital, is of the Annual Value of about £250, and is tenable for 3 years.

Further particulars may be obtained from the Secretary to the Board of Electors, to whom applications must be addressed at the office of the Medical School, not later than July 7th, 1922.

## Guy's Hospital Medical SCHOOL.

### BEANEY SCHOLARSHIP, MATERIA MEDICA.

The Beane Scholarship in Materia Medica is now vacant. The Scholarship is open to Candidates who have received part, at least, of their Medical Education at Guy's Hospital, is of the Annual Value of about £50, and is tenable for 3 years.

Further particulars may be obtained from The Dean, with whom applications must be lodged not later than July 7th, 1922.

## Countess of Dufferin's Fund,

### India. WOMEN'S MEDICAL SERVICE.

Medical Woman required for post of PROFESSOR IN PATHOLOGY to the LADY HARDINGH MEMORIAL COLLEGE, Delhi, and PATHOLOGIST to the Hospital. Salary Rs.750 per mensem, with furnished quarters. Consulting practice allowed.

Two Medical Women are also required for GENERAL SERVICE. Initial salary Rs.550 per mensem, with furnished quarters.

Apply in all cases on special forms by July 7th. Full particulars and forms can be obtained from Hon. Secretary, U.K. Branch of Dufferin Fund, c/o Sir HAYLOCK CHARLES, India Office, S.W. 1.

## Ministry of Pensions.

### ORTHOPÆDIC CENTRE, Birmingham. 350 beds.

Vacancies will arise shortly for two JUNIOR MEDICAL OFFICERS (SURGEONS), unmarried, at the HIGBURY GROUP OF HOSPITALS, Moseley, Birmingham.

Salary in each case £350 per annum, plus lodging, fuel and light. Appointed candidates must live in and be prepared to take up duties on August 1st, next.

The appointments offer a good opportunity for young Surgeons who wish to specialise in Orthopaedic work.

Applications, stating age, experience and War Service, together with copies of recent testimonials to be sent by June 30th, the Chairman of the Committee, Highbury Hospital, Moseley, Birmingham. 2nd June, 1922.

## Leeds Public Dispensary.

LOCUM TENENS required (either sex) for a few weeks, commencing July 1st. Salary 5 guineas weekly, third class railway fare.

Applications, with copies of three recent testimonials, to be addressed to the Secretary of the Faculty, Public Dispensary, North Street, Leeds.

## Medical Superintendent WANTED.

The Guardians of the Poor of the PARISH OF ST. MARY, Islington, require a legally qualified Medical Man as Medical Superintendent of their Infirmary at Highgate Hill. Salary £1,000 per annum, together with unfurnished residence, coals, gas and washing, subject to deductions under the Poor Law Officers' Superannuation Act, 1896. No bonus will be paid. Candidates must be not less than 35, or more than 48 years of age, have been for at least 10 years in practice as a Medical Man and be competent to discharge the duties of the Office in accordance with the Regulations.

Candidates must be duly registered under the Medical Acts and be qualified by law to practise both medicine and surgery in England and Wales, such qualification being established in the case of persons registered before the 30th day of June, 1887, by the production to the Guardians of a Diploma, Certificate of a Degree, Licence, or other instrument granted or issued by competent legal authority in Great Britain or Ireland, testifying to the medical and surgical qualifications of the candidate for such Office. They must also have a Degree from one of the Universities.

Candidates must also state whether they have held the appointment of House Physician or House Surgeon in a Public General Hospital.

The Infirmary is certified for 728 beds and the Staff numbers 288, of whom 154 are resident.

The Infirmary is a training school for Nurses and the person appointed will be required to supervise the instruction given to Probationer Nurses under the Syllabus of the General Nursing Council.

The appointment will be made subject to the production of Birth Certificate and satisfactory Medical Examination.

Written application must be made on forms which can be obtained at these Offices and must be sent to me on or before the 12th July, 1922, accompanied by copies of not more than three testimonials as to competency and evidence of qualification. Selected candidates will have notice when to attend.

Personal canvassing of the Guardians will be held a disqualification.

Guardians' Offices, By Order,  
St. John's Road, ALBERT KING,  
Upper Holloway, N.19. Clerk.  
17th June, 1922.

## West London Hospital,

Hammersmith Rd., W.6. (160 beds).

**HONORARY MEDICAL RADIOGRAPHER** required. Candidates must be duly qualified medical practitioners and have had experience of Radiological work, especially X-Ray diagnosis. The successful candidate will have full control of and be fully responsible for all matters relating to X-Ray diagnosis. Applications, accompanied by copies of testimonials should reach me not later than Wednesday, 19th July. Candidates must attend a Special Meeting of the Medical Council on Friday, 21st July at 4.30 p.m. and prior to that date call upon and send copies of application and testimonials to each member thereof. They must not canvas members of the Board, but nevertheless must send copies of application and testimonials to each member thereof, and be in attendance at a meeting of the Board, who will elect on Tuesday, 24th July at 5 p.m.

H. A. MADGE, Secretary.

## St. George's Hospital, S.W.1.

A RESIDENT MEDICAL OFFICER (male) required for the above Hospital's Convalescent Branch (Atkinson Morley's Convalescent Hospital), at Copse Hill, Wimbledon. Appointment, to date from 1st October next, will be an annual one, tenable for three years, and subject to re-election each year. Salary at the rate of £300 per annum, with quarters and board.

Applicants, who must be registered under the Medical Acts, should send their applications, with copies of two recent testimonials, to the undersigned not later than the 22nd July, 1922.

Patients requiring active Medical and Surgical Treatment are received at the Hospital, where special facilities are available for Surgical Tuberculosis.

JAMES M. CHURCHFIELD,  
19th June, 1922. Secretary-Supt.

## Royal Hospital, Richmond, Surrey.

Applications are invited for the post of HOUSE SURGEON (Male) to this Hospital. Salary £150 per annum, with board, furnished apartments and washing. Candidates must be fully qualified and registered. Applications, stating age, experience, and copies of three recent testimonials, should be forwarded to the undersigned not later than the 27th June.

RICHARD ALLEN, Secretary.

## Northampton General HOSPITAL.

Wanted, a HOUSE SURGEON (male) from July 1st to Sept. 10th. Remuneration 45 guineas. Board, residence, washing and attendance provided.

Applications, stating age, qualifications, &c. with copies of testimonials, to be sent to the undersigned, C. S. RISBEE, Secretary-Superintendent.

## Festiniog Union.

APPOINTMENT OF MEDICAL OFFICER AND PUBLIC VACCINATOR FOR THE DEUDIAETH DISTRICT AND THE POOR LAW INSTITUTION, PENRHYNDUDRAETH.

The Guardians invite applications for the above joint appointment. The District comprises the parishes of Penrhyndeudraeth and Llanfrothen and part of Llandecwyn, with an area of 11,077 acres and population of 1,726.

The salary as District Medical Officer will be £42 per annum, and as Institution Medical Officer £115 per annum, and the fees payable as Public Vaccinator will be 5/9 for each successful case at the homes of the person vaccinated, 2/6 at the Surgery, 2/6 for each case of successful revaccination, and 1/- for each birth entry, subject to deductions (except as to vaccination fees) under the Superannuation Act, 1896.

The Guardians will supply expensive medicines, but the person appointed is to supply ordinary medicines to the paupers free of charge.

Applications, stating age, qualifications, and accompanied by three recent testimonials, to reach me by the 5th July next.

A knowledge of Welsh is essential.  
By order, DAVID JONES,  
Portmadoc, Clerk to the Guardians.  
15th June, 1922.

## County Council of the West RIDING OF YORKSHIRE.

### CHIEF TUBERCULOSIS OFFICER.

The County Council of the West Riding of Yorkshire invite applications for the appointment of Chief Tuberculosis Officer.

Salary £750 per annum, rising to £800 per annum on the 1st April, 1923.

Further particulars and form of application may be had from the undersigned, by whom all applications must be received not later than the 3rd July, 1922.

FRANCIS ALVEY DARWIN,  
County Hall, Clerk of the County Council.  
Wakefield, 12th June, 1922.

## South London Hospital for WOMEN, South Side, Clapham Common, S.W.4.

The Board of Management invite applications from fully qualified medical women for the undermentioned appointments:

HOUSE SURGEON. Appointment for a period of six months from September 1st.

HOUSE PHYSICIAN. Appointment for a period of six months from September 16th. Salary in each case at the rate of £100 per annum with board, residence and laundry. Particulars respecting applications to be obtained from the Secretary. Applications, with copies of testimonials, to reach the Secretary at the Hospital not later than the first post on July 10th.

## The Royal Infirmary, Sheffield.

The weekly Board of Management invite applications for the post of OPHTHALMIC HOUSE SURGEON.

The salary attached to the appointment is £150 per annum, with board and residence.

There are 52 Ophthalmic Beds, and the post offers exceptional opportunities of gaining experience in Ophthalmology.

Applications, with copies of testimonials, to be addressed to the undersigned.

Board Room. JNO. W. BARNES,  
June, 1922. Secretary.

## St. Bartholomew's Hospital.

### VENEREAL DEPARTMENT.

Applications are invited for a part-time PATHOLOGIST to the above Department.

Appointment will be made for one year from the 1st October, 1922, with eligibility for re-election.

The salary attached to the office is £300 per annum.

Applications and testimonials must be left with the undersigned, from whom further particulars may be obtained on or before Monday, the 24th July, 1922.

THOMAS HAYES,  
15th June, 1922. Clerk to the Governors.

## West Bromwich and District HOSPITAL. (105 Beds)

Wanted, a RESIDENT ASSISTANT HOUSE SURGEON (male). He must be doubly qualified and unmarried. Salary £180 per annum, with board, residence, and washing.

Applications, stating age, and if possessing a knowledge of Ophthalmic Surgery, and accompanied by copies of testimonials, should be sent to me.

The candidate appointed will be required to take up his duties immediately.

By Order, FRANK I. HANCOCK,  
Secretary & Superintendent.

# APPOINTMENTS—Important Notice.

## (a) British Islands.

Medical Practitioners are requested not to apply for any appointment referred to in the following table without having first communicated with the Medical Secretary of the British Medical Association, 429, Strand, London, W.C. 2.

Town or District.	Town or District.	Town or District.
<b>CONTRACT PRACTICE.</b>		<b>PUBLIC HEALTH.</b>
<b>ENGLAND.</b>		COUNTY BOROUGH OF BARROW-IN-FURNESS. (Assistant M.O.H. and Clinical Tuberculosis Officer.)
MIDDLESBOROUGH, SOUTH BANK, & ESTON. (Medical Aid Associations or Workmen's Clubs.)	<b>WALES (continued.)</b>	CITY OF BIRMINGHAM. (Assistant School Medical Officer.)
NEWBOTTLE COLLIERY. (Workmen's Medical Association.) Fence Houses, Durham.	GILFACH GOCH, GLAMORGAN. (Workmen's Medical Scheme.)	CHESHIRE COUNTY COUNCIL. (Whole-time District Tuberculosis Officer.)
HORDEN COLLIERY LODGE, DURHAM. (Workmen's Medical Association.)	LLWYNPIA, CLYDACH VALE, PENYGRAIG, GLAMORGAN. (Workmen's Medical Scheme.)	LANARK COUNTY: LOWER WARD DISTRICT. (Assistant Medical Officer of Health.)
	MARDY, GLAMORGAN. (Workmen's Medical Scheme.)	PLYMOUTH EDUCATION AUTHORITY. (Assistant School Medical Officer [Lady].)
	OAKDALE, MON. (Medical Officer for Model Village and Cottage Hospital.)	SAFFRON WALDEN BOROUGH AND R.D.C. (Medical Officer of Health; Medical Supt. of Isolation Hospital; Asst. County Med. Officer.)
<b>WALES.</b>	OGMORE VALLEY, GLAMORGAN. (Workmen's Medical Scheme.)	COUNTY BOROUGH OF WEST BROMWICH. (Tuberculosis Officer and Assistant Medical Officer of Health.)
ABERTRIDWR, GLAMORGAN. (Windsor Colliery. (Medical Scheme.))	TONDU and ABERKENFIG, GLAMORGAN. (Workmen's Medical Scheme.)	
EBBW VALE, MON. (Workmen's Medical Society.)	TREORCHY, PARK & DARE (GLAMORGAN). (Workmen's Medical Scheme.)	
GARW VALLEY, GLAMORGAN. (Workmen's Medical Scheme.)		

## (b) South Africa.

Town or District	Town or District.
NATAL PROVINCIAL ADMINISTRATION. GOVERNMENT HOSPITAL, DURBAN. (Senior Resident Physician.) (Senior Resident Surgeon.)	UNIVERSITY OF CAPE TOWN. (Senior Lectureships.) (Lectureships.)

## (c) Other Colonial Appointments.

Medical practitioners are requested not to apply for any appointment referred to in the following table without having first communicated with the Honorary Secretary of the Division or Branch named in the second column, or with the Medical Secretary of the British Medical Association, 429, Strand, London, W.C. 2.

Town or District.	Hon. Sec. of Division or Branch.	Town or District.	Hon. Sec. of Division or Branch.	Town or District.	Hon. Sec. of Division or Branch.
NEW SOUTH WALES. (All Friendly Society Appointments.)	Dr. R. H. TODD (Hon. Sec., New South Wales Branch), B. M. A. Building, 30-34, Elizabeth Street, Sydney, N.S.W.	QUEENSLAND. (Brisbane Associated Friendly Societies Institute.)	Dr. R. MARSHALL ALLAN (Hon. Sec., Queensland Branch), Adelaide Street, Brisbane.	VICTORIA. (All Institute or Medical Dispensaries; Manchester Unity Independent Order of Oddfellows.)	Dr. FRANK DAVIES (Hon. Sec., Victorian Branch), Medical Society Hall, E. Melbourne, Victoria.
				WESTERN AUSTRALIA. (Contract and Lodge Practices.)	Hon. Sec., Western Australian Branch, No. 6, Bank of New South Wales Chambers, St. George's Terrace, Perth.

Address: 429, Strand, W.C.2.  
June 20th, 1922.

By order of the Council of the British Medical Association,

ALFRED COX, Medical Secretary.

### County Borough of Rotherham

#### SCHOOL MEDICAL OFFICER.

The Education Authority invite applications from registered medical practitioners (male) for the position of School Medical Officer. Commencing salary £700 per annum.

The officer appointed will be required to devote his whole time to the work of the School Medical Service.

It is desirable that candidates should possess experience in School Hygiene, the X-ray treatment of Ringworm, and in the study of Diseases of Children.

Applications, stating age, qualifications and experience, accompanied by copies of not more than three recent testimonials, must reach the undersigned not later than Wednesday, 28th June, 1922. Canvassing will disqualify.

Education Offices, JAS. A. MAIR,  
Rotherham. Secretary for Education.

### Newcastle-on-Tyne DISPENSARY.

Applications are invited for the post of RESIDENT MEDICAL OFFICER. Applicants must be doubly qualified and registered and be prepared to remain at least three years.

Salary £350 for the first year, £375 for the second year and £400 for the third year, together with furnished apartments, free coal, light and attendance.

Forms of application and information as to the duties may be obtained from the Resident Medical Officer at the Dispensary.

Applications to be sent to the Honorary Secretary JOSEPH CARR, Chartered Accountant, 26, Mosley Street, Newcastle-on-Tyne, not later than the 10th July, 1922. Canvassing not allowed.

### Westminster Hospital,

Broad Sanctuary, S.W. 1.

The offices of ASSISTANT HOUSE PHYSICIAN and ASSISTANT HOUSE SURGEON will be vacant on 1st August. The appointments are for 3 months, non-resident, board provided, to be followed by six months as House Physician and House Surgeon respectively, with board and lodging in the Hospital, and an honorarium at the rate of £52 per annum in each case.

Candidates must be registered male medical practitioners.

Applications should be addressed to the undersigned.

CHARLES M. POWER, Secretary.

### University College Hospital.

Gower Street, W.C. 1.

Required a Half-time MEDICAL OFFICER to assist in Clinical Investigation and Research in the treatment of cases of Malignant Disease by Radium, to keep notes and records, and to prepare an Annual Report in connection therewith.

Salary £250 per annum.

Applications, accompanied by not more than three recent testimonials, must reach the Secretary of the Hospital by noon on Wednesday, June 28th, 1922.

### Hospital of St. John and

ST. ELIZABETH, 40, Grove End Rd., N.W. 8.

Applications are invited for the post of ASSISTANT PHYSICIAN to this Hospital. Applications, with three testimonials, to be sent to the SECRETARY, at the Hospital, by the 1st of July.

### Royal Devon and Exeter

HOSPITAL, Exeter. (200 beds.)

#### ASSISTANT HOUSE SURGEON.

Applications are invited for the post of male Assistant House Surgeon at this Hospital. The appointment is for six months, but candidates are eligible for re-election.

Salary at the rate of £150 per annum, with board apartments and washing.

Applications, giving full particulars as to age, qualifications, together with certificate of registration, and copies of recent testimonials, should be sent to the undersigned, on or before Tuesday, 27th inst.

By Order of the Committee.  
Dated 9th June, 1922. S. S. COLE, Secretary.

### Leeds City Infectious Diseases

HOSPITALS, Seacroft.

Required, a SECOND ASSISTANT MEDICAL OFFICER, early in July. Candidates must be qualified in Medicine and Surgery, registered and unmarried. Salary £250 per annum, with board, lodging and washing. Three recent testimonials. Application before June 30th, to Medical Superintendent, City Hospitals, Seacroft, Leeds.

### Devon Mental Hospital.

THIRD ASSISTANT MEDICAL OFFICER, Male (single) required. Salary £300 per annum, with furnished quarters, board and laundry.

The appointment will be subject to the provisions of the Asylums Officers' Superannuation Act, 1909.

Apply, at once for form of application to THE CLERK, The Devon Mental Hospital, Exminster.



**Wanted.—Welsh-speaking,**  
outdoor ASSISTANT, industrial district, Carnarvonshire. View Partnership if satisfactory. Usual bond. Writestating age, experience, married or single and other essential particulars to No. 2316, BRITISH MEDICAL JOURNAL Office 429, Strand, W.C.2.

**Wanted, qualified indoor**  
ASSISTANT (single). Scotsman preferred and with some experience, for good-class country practice in Berks. Motor cyclist. £350 p.a. View Partnership if suitable. Give particulars.—Address, No. 2913, BRIT. MED. JOUR. Office, 429, Strand, W.C.

**Wanted.—Outdoor Assistant,**  
married, for private and panel Practice in Midlands. House available. Salary according to experience, and com. Must be energetic, keen on work. Usual bond.—Add., stating age, experience, nationality and refs., No. 2912, B.M.J., 429, Strand, W.C.

**Wanted, about the end of**  
July, a qualified Indoor ASSISTANT in a Glamorganshire colliery district. Would suit a newly qualified man. Salary £300 per annum. Usual bond.—Address, with references, No. 2907, BRITISH MEDICAL JOURNAL Office, 429, Strand, W.C.

**Wanted by M.B., B.S.,**  
M.R.C.S., L.R.C.P., ASSISTANTSHIP with view to partnership or succession. North of England preferred. Capital available.—Address, No. 2914, BRIT. MED. JOUR. Office, 429, Strand, W.C.

**Wanted, Post as Ship Doctor**  
or ASSISTANTSHIP ABOARD by a medical man, age 32. Had own practice; experience in panel and private practice; excellent testimonials.—Address, No. 2915, B.M.J. Office, 429, Strand, W.C.

**Wanted.—A well qualified**  
MEDICAL WOMAN, with sound experience in children's diseases to assist doctor in working-class neighbourhood in London. Non-resident. Write fully, stating experience and qualifications, to No. 2929, BRIT. MED. JOUR. Office, 429, Strand, W.C.

**Assistant wanted, London.**  
Private panel, frequent charge. Experienced. Energetic worker with view future to suitable. Unfurnished rooms, surgery. Full particulars and two references essential.—Address No. 2904, BRITISH MEDICAL JOURNAL Office, 429, Strand, W.C.

**Assistantship wanted by**  
M.R.C.S., L.R.C.P. (London), ex-H.S., preferably with view to Partnership. Experience of private and panel practice.—Address, No. 2920, BRITISH MEDICAL JOURNAL Office, 429, Strand, W.C.

**Assistantship, preferably to**  
Manage Branch Practice, wanted by qualified man with experience. Good references.—Address, No. 2930, BRITISH MEDICAL JOURNAL Office, 429, Strand, W.C.2.

**As Secretary.—Trained**  
nurse, qualified in dispensing and able to typewrite, requires post as Secretary. Experienced.—Address, No. 2917, BRITISH MEDICAL JOURNAL Office, 429, Strand, W.C.2.

**Federated Malay States.—**  
ASSISTANT required about the end of the year. Commencing salary £630 rising to £840 per annum. Four years agreement. Prospect of partnership. Applicants should be about 30 years of age and unmarried. Apply, General Manager, SCHOLASTIC, CLERICAL & MEDICAL ASSN., Ltd, 12, Stratford Place, Oxford Street, W.1.

**Lady, M.B., Ch.B., D.P.H.,**  
desires post as ASSISTANT to doctor. Some experience in general practice.—Apply, "Locum," Cefnukynaston, Cefn, Ruabon, N. Wales.

**M.B., B.S. Lond., D.P.H.,**  
desires PART-TIME WORK in London. Afternoon and evening of Mondays and Fridays not available. 5 years army service. Special experience in Bacteriology and Tropical medicine.—Address, No. 2911, BRIT. MED. JOUR. Office, 429, Strand, W.C.

**Part-time work wanted,**  
London; week-ends, evening surgeries, &c. Experience panel, &c.—Address, No. 2908, BRITISH MEDICAL JOURNAL Office, 429, Strand, W.C.

**General Physician practising**  
off Harley Street would act as DEPUTY FOR PHYSICIAN during holiday season. Used to highest class practice. Speaks French.—Address particulars in confidence to No. 2911, BRITISH MEDICAL JOURNAL Office, 429, Strand, W.C.2.

**Medical Officer required for**  
Oil Refinery in the Tropics. Young and experienced Tropical diseases. Knowledge of Spanish advantage.—Reply, Box 150, c/o DAWSON'S, 17, Craven Street, Strand, W.C.2.

**Ships' Surgery required.—**  
Doctor having disposed of Practice desires long VOYAGE. Physically fit. Experienced sailor. Highest references given and required. Free July 16th.—Address No. 2924, BRITISH MED. JOURNAL Office, 429, Strand, W.C.2.

**Chemist.—Fully-qualified man**  
required as Manager and Buyer for a Department about to be opened. Knowledge of Optics a recommendation.—Apply immediately for application form, which must be completed and returned to arrive not later than first post on July 3rd.—DARLINGTON CO-OPERATIVE SOCIETY, Priestgate, Darlington.

**Husband and Wife (educated,**  
good appearance), monetarily affected by slump, SEEK POSITION together. Could be very useful to professional man: doors, telephone, housework and general service; car driving and cleaning. Whole-hearted service from employer's point of view given. Unimpeachable references. Interview requested.—Add., No. 2928, B.M.J. Office, 429, Strand.

**Wanted to live in, Dispenser**  
BOOK-KEEPER. Applications, stating experience and remuneration required, to Dr. SUGDEN, Coltishall, Norwich.

**LOCUM TENENS**  
supplied by  
Messrs. JOHN BELL & CROYDEN, Ltd.  
(Inc. ARNOLD & SONS).  
Phone requirements, Transfer Dept., City 5240,  
or wire "Instruments, London."

**Wanted Locum Tenens from**  
August 21st for three weeks. Small Practice, small country town. Good house, very large garden. 3 guineas a week, 1 return railway fare, and hospitality to doctor and wife.—Address, No. 2930, B.M.J. Office, 429, Strand, W.C.2.

**Wanted.—Locum Tenency**  
in quiet Country Practice from July 15th, in exchange for hospitality for self, wife and child of 5 months. Advertiser is a regular Medical Officer at present on furlough. Can bring own car.—Add., No. 2923, BRIT. MED. JOUR. Office, 429, Strand, W.C.

**Wanted.—Locum, 2nd half**  
July. Light practice, N.E. Coast Scotland. Tennis, golf, bathing. Beautiful scenery. Excellent for busy practitioner requiring holiday. Live in.—State essential particulars to Dr. JOHNSTONE, Cromarty.

**FOR LOCUM TENENS APPLY TO**  
**Mr. PERCIVAL TURNER**  
The Oldest and only Agent who for 40 years  
has supplied substitutes at short notice  
without fee to principals.  
4, ADAM STREET, STRAND, LONDON, W.C.2  
Telegr. : "Epsomian, London." Phone : Gerrard 399.  
After 5 p.m.—Phone : Epsom 695.

**As Locum.—G. P. (15 years'**  
experience locum work), open to engagement. Free June 30th. References 1920 and 1921. Fees by arrangement.—Apply, ARTHUR NORRIS, Wymondhan, Norfolk.

**General Medical Agency,**  
Limited, are prepared to arrange for providing LOCUM and ASSISTANTS and negotiating PARTNERSHIPS etc., in the Medical and Dental professions. Applicants for position as Locum, Assistants or Partners are invited to register without charge.—Apply to Secretary, C. R. SANDS, A.C.A., 12, Victoria Street, Nottingham.

**Lady Doctor (Scotch),**  
experienced in general practice and infant welfare work, would act as LOCUM till July 23rd, and again in Sept. and October.—Address, No. 2918, BRITISH MEDICAL JOURNAL Office, 429, Strand, W.C.

**LOCUM TENENS**  
PROVIDED  
AT AN HOUR'S NOTICE.  
Apply to  
**Mr. W. S. ATKINS**  
(Late of ARNOLD & SONS, London)  
43, BEDFORD STREET, STRAND, W.C.2.

Telegraphic Address:  
"Positions, Westrand, London."  
Telephone : Regent 229.

**Locum Tenency, without**  
midwifery, desired by medical man. Age 62. Active. Well received. Good references. Terms, seven guineas, with travelling expenses. Free after 28th to August 15th.—Dr. RHODES, 64, Bonham Road, London, S.W.2.

**Wanted, Progressive Middle**  
and Working-class PRACTICE, with good panel, by Scottish Graduate. Age 40. Seventeen years' experience all kinds of practice. Ho-pital staff, Parish Medical Officer, &c. Reasonable terms only. Would consider partnership with succession. Particulars in confidence to Dr. "G," 30, Bolton Road, Pendleton, Manchester.

**Wanted, for first two or three**  
weeks in September, Exchange PRACTICE with seaside practitioner. Advertiser has nice garden with tennis court and beautiful country round; light work during Sept. Within 1 hour of London fast train, and 1 hour inland spa, and 400 ft. above sea level.—Address, No. 2932, BRITISH MEDICAL JOURNAL Office, 429, Strand, W.C.2.

**Wanted, private Practice,**  
with or without panel in London, or within 30 miles. Receipts over £1,000 per annum. Nice house with garden preferred. Partnership entertained.—Apply, PEACOCK & HADLEY, 19, Craven Street, Strand, W.C.2. (No charge unless sale effected).

**Wanted.—Country or Country**  
town PRACTICE producing over £1,000 per annum. Panel not objected to. Good house with garden essential. Send full details in confidence.—Mr. W. S. ATKINS, Medical Transfer Agency, 43, Bedford Street, Strand, W.C.2.

**Wanted by F.R.C.S., aged 30,**  
a good-class PRACTICE or PARTNERSHIP in country town, near the sea preferred, in S. or East of England. Income about £1,000. Now free.—Apply BLUNDELL & Co., Walter House, 418/422, Strand, London, W.C.2.

**Wanted, Country or Country**  
Town PRACTICE, about £1,000 per annum, with nice house and garden, and easy access to good schools.—Address particulars in confidence to No. 2919, BRIT. MED. JOUR. Office, 429, Strand, W.C.

**Wanted by M.B., B.S., a**  
PRACTICE of about £1,500 with some panel in a suburb or central part of London.—Apply, BLUNDELL & Co., Walter House, 418/422, Strand, W.C.2.

**Wanted, Practice (private and**  
panel) doing £1,500 or over. Good house and garden, and social and educational advantages essential.—Address, No. 2931, BRITISH MEDICAL JOURNAL Office, 429, Strand, W.C.2.

**Wanted, Panel and Private**  
PRACTICE in or near London. Receipts over £1,000 a year. Necessary capital available.—Address, No. 2902, BRIT. MED. JOUR. Office, 429, Strand, W.C.

**Death Vacancy.—North**  
Wales. Near Coast, about £1,500 a year. Old estab. Very little opposition. On rail. Panel worth £900 a year. Other appts. £550. Choice of houses. Locum in charge. All sport. Open to offers.—Apply, No. 7173, Mr. PERCIVAL TURNER, 4, Adam St., Strand, W.C.2.

**Bradford.—Lucrative Panel**  
and General PRACTICE. Receipts over £3,000. Panel over 2,400. Rent of house £60. Freehold can be purchased.—Apply No. 1992, REYNOLDS & BRANSON, Ltd., 13, Briggate, Leeds.

**For Disposal.—A good Prac-**  
TICE is not always to be had directly, but Mr. PERCIVAL TURNER can generally offer applicants something suitable. Nearly all the best Practices are sold by him without being advertised.—Full information free on application to 4, Adam St., W.C.2.

**Glam.—An old-estab. general**  
PRACTICE situated in a large town. Receipts over £2,200. Panel 2,000. Fees 2/6 upwards. Nice house in central position, containing 4 bedrooms, &c. Rent £75 p.a. or would sell. Premium for Practice £2,500.—Apply, Folio 539, Mr. W. S. ATKINS, Medical Transfer Agency, 43, Bedford Street, Strand, W.C.2.

**London.—£2,800 a year. Panel**  
and mixed PRACTICE for immediate sale owing to ill-health. Very old established. Panel and appts. bring in £1,800. Midwifery refused. Great scope. Good corner house.—Apply, No. 7145, Mr. PERCIVAL TURNER, 4, Adam St., Strand, W.C.2.

**Good-class Spa Practice with**  
house and garden FOR SALE. Small panel. Beautiful country. All sports.—Address No. 2925, BRITISH MED. JOURNAL Office, 429, Strand, W.C.2.

**Leeds.—Panel and Private PRACTICE.** Present turnover about £1,500. Panel 800. Bachelor quarters with consulting room and dispensary available. Premium £1,000. An additional panel of 300 can be transferred from an adjacent practice.—Apply No. 2003, REYNOLDS & BRANSON, Ltd., 13, Briggate, Leeds.

**Large and Small Practices**  
Wanted at once; have numerous buyers with capital available. Sales satisfactorily arranged. Send full details to The General Manager, Messrs. JOHN BELL & CROFTON, Ltd., Incorporating Messrs. Arnold & Sons, Transfer Dept., 6, Giltspur St., E.C.1.

**London, N.W.—£1,700 a year**  
old-established good-class family PRACTICE in favourite suburb. Fees 7/6 to 21/-. Good corner house. Small panel. X-Ray outfit if required. Easily worked.—Apply, No. 7140, Mr. PERCIVAL TURNER, 4, Adam Street, Strand, W.C.2.

**London, N.W.—Non-panel PRACTICE.** Receipts, 1921, £800. Fees mostly 10/6. Easily worked. No conveyance. Leasehold corner house. For SALE. Price for house and practice, £2,000.—Address, No. 2916, BRITISH MEDICAL JOURNAL Office, 429, Strand, W.C.2.

**Lincs.—An unopposed non-panel Practice** situated in a country district producing over £1,500 p.a. Fees 5/- upwards. Excellent house with large garden, &c., at rental. Premium £1,250.—Apply, Folio 540, Mr. W. S. ATKINS, Medical Transfer Agency, 43, Bedford Street, Strand, W.C.2.

**Medical Practice for immediate disposal.** The old-established private Practice carried on by the late Dr. John Martin, of 13, Palmway Square, Warrington, for the past 15 years will be sold by private treaty. House not yet available but good rooms near to could be had for use of surgery. To an energetic man there is an excellent nucleus to build up a lucrative practice. For further particulars apply to Messrs. HENRY GREENALL & COY., Solicitors, Warrington.

**Manchester.—A general PRACTICE** situated in an industrial part. Receipts over £1,500, including panel value £1,000. Fees 2/6 upwards, ample scope. Nice house in central position containing 4 bedrooms, &c. No garden. Rent £40 p.a. Premium £1,750.—Apply, Folio 610, Mr. W. S. ATKINS, Medical Transfer Agency, 43, Bedford Street, Strand, W.C.2.

**North of England.—For Sale**  
a pleasant, unopposed Country PRACTICE and an attractive small house with modern fittings, outbuildings, garden and field. Fine and convenient situation. Income £1,300. Combined price £4,000. Or a Partnership with succession in 1924 at latest might be arranged.—Add., No. 2813, B.M.J., Strand.

**North Wales.—Unopposed country PRACTICE** for sale. Welsh essential. Premium 1 year. About £1,200 to £1,400 per annum.—RAINFORD, 40, Hamilton Street, Hooton, Chester.

**To Purchasers.—Do not Buy**  
without expert assistance. With 40 years' experience Mr. PERCIVAL TURNER can advise in all cases. Terms free on application to 4, Adam Street, Strand, W.C.2. Telephone: Gerrard 399. Telegrams: "Epsomiam London."

**North-west of England.—£1,500 a year.** High-class non-dispensing, non-panel PRACTICE, with scope for increase. Practically no night work or midwifery. Ample introduction. Good house on outskirts of town, small garden, fine view. Near pleasant country and coast. A splendid opportunity for the right man.—Address No. 2921, BRITISH MEDICAL JOURNAL Office, 429, Strand, W.C.2.

**North Wales.—An old-established PRACTICE** situated in a Colliery district. Receipts £3,300. Panel 3,300. Fees 2/6 upwards. Apts. £1,200 p.a. Excellent Schools 3 miles away. Nice house containing 5 bedrooms, &c., large garden and garage. Rent £100 p.a. Premium £4,000, payable £1,500 down and the balance spread over a period of four years.—Apply, Folio 521, Mr. W. S. ATKINS, Medical Transfer Agency, 43, Bedford Street, Strand, W.C.2.

**Practice wanted in London or**  
suburbs or within about 50 miles, returning an income from £1,000 to £1,500 a year. Applicant is prepared to purchase at once and can pay the premium in cash for a satisfactory practice. Particulars in confidence to No. 5691, Mr. PERCIVAL TURNER, 4, Adam Street, Strand, W.C.2.

**Practice exchange: in South**  
West Coast Town, £1,400, good house, lease; for Practice on Surrey Hills or other bracing place.—Address, No. 2829, BRITISH MEDICAL JOURNAL Office, 429, Strand, W.C.2.

**Required at once.—Practices and PARTNERSHIPS.**—Mr. W. S. ATKINS (late of ARNOLD & SONS, London), has a large number of Clients who are seeking Practices and Partnerships, and wish to settle down at once.—Send full particulars, in confidence, to Mr. W. S. ATKINS, Medical Transfer Agency, 43, Bedford St., Strand, London, W.C.2.

**South Africa.—£4,000 a year.**  
Large seaport town. Good house and garden. Large European population.—Apply, No. 7174, Mr. PERCIVAL TURNER, 4, Adam Street, Strand, W.C.2.

**Situated amidst romantic scenery, S. Wales, PRACTICE** £2,100 p.a., fixed appointments £2,000, private £100. Commodious modern house overlooking valley of Taff. Second small house suitable for partner. 1/2 share £1,600, whole practice £3,000. No offers.—Add., No. 2909, BRIT. MED. JOUR. Office, 429, Strand, W.C.

**South Coast.—£2,200 a year.**  
In a favourite resort increasing practice. Panel 1,400. House in good thoroughfare. Partnership introduction. No dispensing. Little night work.—Apply, No. 7103, Mr. PERCIVAL TURNER, 4, Adam Street, Strand, W.C.2.

**Required in London or**  
Suburbs General PRACTICE with Panel, producing over £1,000 p.a. Nice house at rental. Send full details in confidence to Mr. W. S. ATKINS, Med. Transfer Agency, 43, Bedford St., Strand, W.C.

**Yorkshire.—Over £2,300 a**  
year. Old established. Panel 1,600. Rapidly increasing district on outskirts of large town. No immediate opposition. Large house and garden, tennis lawn, &c., on lease. Would suit two men. Premium 3,000 guineas.—Apply, No. 7172, Mr. PERCIVAL TURNER, 4, Adam St., Strand, W.C.2.

**Small town in nice Country**  
district in South Wales. Well established colliery, panel and agricultural PRACTICE. Receipts January to April this year £556. Panel 1,600. Good fees. House on lease.—LEE & MARTIN, Ltd., 71, Temple Row, Birmingham.

**Birmingham.—Nucleus.**  
Established 18 months. Receipts last year £525. Panel 170, increasing daily. Excellent prospects. House for sale. Price with Practice, £750.—LEE & MARTIN, Ltd., 71, Temple Row, Birmingham.

**Large Midland Town.—Practically unopposed.**—Old-established Industrial PRACTICE.—Receipts £1,470. Panel 1,800. Transferable Appointments. Fees 3/6 to 5/-. House £80. Lease or for sale.—LEE & MARTIN, Ltd., 71, Temple Row, Birmingham.

**South Yorkshire.—Unopposed old-established Industrial Panel and Private PRACTICE.** Receipts over £2,300. Good house and garden.—LEE & MARTIN, Ltd., 71, Temple Row, Birmingham.

**West Midlands.—Partnership.** One-third share in mixed Practice. Receipts over £2,200. Panel 1,880. Preliminary Assistantship if desired.—LEE & MARTIN, Ltd., 71, Temple Row, Birmingham.

**Wanted by an experienced**  
practitioner, aged 32, bachelor, ex-H.S., H.P., speciality ear, nose, and throat. Half-share PARTNERSHIP of about £1,000 in London or the South, in a practice not entirely industrial.—Apply, "R. W.", 9, Mountney Road, Eastbourne.

**Banff.—Partnership in old-established Practice.** Receipts £1,000, great scope. Suit energetic single man. Vendor opening up practice 8 miles away with excellent prospects. Good sport. Half-share £500.—MANCHESTER MEDICAL & SCHOLASTIC ASSOC., 8, King Street.

**Derbyshire.—Partnership in**  
lovely district. Receipts £3,400. Price fourth share (increased to one-third later) 2 years' purchase part deferred. Scope for surgery. Cottage hospital. Fishing, golf.—MANCHESTER MEDICAL & SCHOLASTIC ASSOCIATION, 8, King Street.

**Partnership. Nearly £3,000 a**  
year. Within 70 miles of London on the outskirts of large town, and increasing. Panel over 2,000, and other appointments about £400 a year. Residential district. One-third share at first. Small house available. Personally known and recommended.—Apply, No. 7176, Mr. PERCIVAL TURNER, 4, Adam Street, Strand, W.C.2.

**Partnership, general Country**  
Practice. Scope for surgery. All sports. Nice house for sale, part can remain.—Address, No. 2706, BRITISH MEDICAL JOURNAL Office, 429, Strand, W.C.2.

**Partnership with succession**  
when required in old-established mixed practice. Panel nearly 1,900 and steadily growing. Receipts about £4,000. Easily worked. Beautiful house in own grounds. Half share £2,000.—Address, No. 2922, BRIT. MED. JOUR. Office, 429, Strand, W.C.2.

**Partner wanted, £2,600 a yr.,**  
mixed practice and panel; 1/2 share for sale. London 20 mins. main line. House available, buy or rent. Good scope for energetic man.—Address, No. 2903, BRIT. MED. JOUR. Office, 429, Strand, W.C.

**Partner wanted in country**  
Practice of about £2,300 a year, 1/2 share to commence. Single preferred, not over 32.—Write, "Sillex," Box 1632, WILLINGS, 30, King Street, Covent Garden, W.C.2.

**North Wales.—Partner**  
wanted in lucrative Industrial Practice. Large panel. Share worth £800 net guaranteed, larger share later. Excellent opportunity for active man. House available if required. Prem. £1,500, half down.—No. 2732, B.M.J. Office, 429, Strand, W.C.2.

**Wanted.—Zeiss or Leitz**  
MICROSCOPE with Abbe Condenser and movable stage, suitable for sanatorium purposes. Must be in first-class condition. State price and particulars to Dr. WHITLEY, South Granville House, Jesmond, Newcastle-upon-Tyne.

**Advertiser has several crates**  
of LOVELY WHITE FLINT MEDICINE BOTTLES. 4 oz. 18/-; 6 oz. 19/6; 8 oz. 20/6. £5 orders Carriage Paid. Ordinary Pale Green Bottles stocked in all sizes.—Address, No. 2828, BRITISH MEDICAL JOURNAL Office, 429, Strand, W.C.

**Electric Light Bath on couch,**  
full length, carbon lamps, 4 Arc lamps, towel-drawer, &c. £35 or near offer. LARGE X-RAY SCREENING STAND, nearly new, 6ft. 8in. high, complete, with fittings. £50 or near offer.—H. J. MONSON, Radiographer, 26, Manchester Street, W.1.

**Static Machine, 8 plate, 36in.,**  
dust proof glass case, all accessories, patent wave device. £80, fixed in London; guaranteed. MERCURY VAPOUR LAMP, nearly new; accessories. Test. £30 or near offer.—Address, No. 2927, BRITISH MEDICAL JOURNAL Office, 429, Strand, W.C.

**Special to Students and those**  
requiring a first-class MICROSCOPE. We are able to offer a few only of the well-known Koristka Folding Travelling Microscopes, which are brand new, and listed at £38, at a specially reduced price of £20. This offer is made to ensure immediate disposal of our stock of this model, and to make room for a slightly improved pattern which is now ready for delivery from the factory. There are only a few for disposal, and the offer can under no circumstances be repeated. We will arrange to supply on Deferred Payment Terms if desired. £4 cash down and twelve equal payments of £1 9 4. Strict approval if desired. Specification: Koristka 1922 model, compact folding pattern, fine and coarse adjustment, square stage, three eyepieces, and three objectives, 2/3rd, 1/6th, and 1/12th inch oil immersion, Abbe condenser, with iris, complete in case, and special platform for use of microscope on tripod stand. These are brand new 1922 instruments, not secondhand. To secure one of the limited number immediate application must be made.—THE CITY SALE AND EXCHANGE, 81, Aldersgate Street, London, E.C.1.

**Wanted to purchase.—**  
British Medical Journal, July, 1914 to December, 1922. Bound preferred. State price.—B. F. WESLEY, 28, Essex Street, London, W.C.2.

**Furniture and Fittings, prac-**  
tically new, of Consulting Room and Waiting Room, with NUCLEUS of Practice, to be disposed of. Main road, good position, London, S.W.—Address No. 2910, BRITISH MEDICAL JOURNAL Office, 429, Strand, W.C.2.

**Large Building constructed**  
for HOSPITAL or CONVALESCENT HOME on hygienic principles of the very best materials and appointments. 20 rooms, including operating room, 12 lavatories, 3 bathrooms; central heating. Well situated in one of the healthiest resorts on the South Coast. In perfect condition throughout for immediate occupation. Suitable for Hydro, Hospital or Convalescent Home. At to-day's prices would cost over £30,000 to build. Owing to exceptional circumstances freehold can be had at a very low figure.—Write, X., c/o STANLEY ELLIOTT ADVERTISING AGENCY, 83, Farringdon St., London, E.C.4.

**A small, well-equipped**  
PATHOLOGICAL LABORATORY close to Harley Street. Terms £60 yearly. Also part-time use of Consulting Room from 4 until 6, £120. Address, No. 2804, BRITISH MEDICAL JOURNAL Office, 429, Strand, W.C.2.

## TO THE PROFESSION.

### Medical men requiring

**DISTINCTIVE DRESS** can secure perfectly tailored clothes made to measure in 24 hours. Finest quality materials at most reasonable prices. **SUITS AND OVERCOATS** in great variety from 28 6s. Patterns post free. **A PERFECT FIT GUARANTEED.**

#### SPECIAL OFFER.

Black or Grey Jacket and Vest for professional or evening wear, £1 14s. 6d.

**Visitors to London can be measured and fitted the same day.**

**HARRY HALL, 207, OXFORD STREET, W. 1.**

Phones: MUSEUM 820-821, CITY 2086.

**HIGHEST AWARDS 12 GOLD MEDALS for EXCELLENCE**  
ESTABLISHED OVER 35 YEARS.

## INCOME TAX.—£430 SAVED.

**Reduction of Tax** obtained in recent cases for Medical Clients. £178—£121—£75—£56. One Client writes: "Dr. M—'is delighted with the way in which you are managing what has always been a perfect nightmare 'to him.' Consult us *to-day* and see what we can save *you* in worry and money. Specimen Sheet of our 'Simplex' Doctor's Account Book free on request. **HARDY & HARDY, Taxation Consultants, Office B, 292, High Holborn, London, W.C. 1.**

## Splendid opportunity Colonies,

young doctor **PURCHASE** doctor's HOUSE, PRACTICE, etc. No rents nor rates, house California style, hot water heated, furniture elegant, electric light, spacious office, waiting room, garage, stable. Built by owner, retiring, age 40. Bank references required before negotiations. Early possession. Offers accepted.—Apply, **DYSON, 36, Warbreck Hill Road, Blackpool.**

## Bournemouth, in Parkstone.

Vacant. Freehold. £1,350. 4 rec. 6 bed. garage. Stabling. South Aspect. Close golf. Trams. Admirably suitable for doctor. **RUMSEY & RUMSEY, Parkstone, Dorset.**

## Park Crescent, Portland

Place.—**SPACIOUS HOUSES** to be Let on Lease, overlooking ornamental gardens, Regent's Park. Suitable for first-class Private and Professional Residences.—For particulars apply to **Mr. JOHN MURRAY, F.R.I.B.A., 11, Suffolk Street, Pall Mall, S.W. 1.**

## To Members of the Medical

Profession.—**PICCADILLY** (just off), in one of London's most imposing Squares. A **GROUND FLOOR** comprising three fine rooms, &c. Available as Consulting Rooms. Reasonable inclusive rental.—Apply, Messrs. **KNIGHT, FRANK & RUTLEY, 20, Hanover Square, W. 1.**

## Bed-Sitting Room in doctor's

house close to Harley Street. Use of Consulting Room if required. Moderate terms.—Address, No. 1714, **BRITISH MEDICAL JOURNAL** Office, 429, Strand, W.C. 2.

## Consulting Room, use Wait-

ing. Phone, light, attendance. Reasonable terms.—"G." 42, Gordon Square, W.C. 1. Phone: Museum 4295.

## Corner of Harley Street,

Ground Floor ROOM with everything ready for Radiologist or Dentist. Dark-room same floor.—Address, No. 1907, **BRITISH MEDICAL JOURNAL** Office, 429, Strand, W.C. 2.

## Ford Sedan for Sale. Good

running order and condition, eighteen months use. 2 new tyres. Self-starter, right hand drive. Cost £450, offer.—Address No. 2905, **BRITISH MEDICAL JOURNAL** Office, 429, Strand, W.C. 2.

## No Deposit Required.—Our

unique system of Deferred Payments enables you to purchase a Car without paying a deposit. Four per cent. interest only.—Practically any make supplied.—**HENLY & CO., 91, Great Portland Street, W. Langham 1926.**

## Doctors' A/c Forms printed

in best style—250, 12s. 6d.; 500, 17s. 6d.; 1,000, 26s. Letter heads, Post Card heads, Calling Cards, &c., at equally moderate rates. Samples sent. **R. ANDERSON & SON, Printers, 1, HILL PLACE, EDINBURGH.**

## Liverpool Stanley Hospital.

**TWO HOUSE SURGEONS** required for July 1st next. Salary £120 per annum, with board, residence and laundry. Candidates must be on the Medical Register, and submit their applications to the undersigned, accompanied by copies of three recent testimonials.

**FRANK WHITE, Hon. Secretary.**

## Manchester Northern

**HOSPITAL for WOMEN and CHILDREN,**  
Park Place, Cheetham Hill Road, Manchester.

The Committee of Management require the services of a duly qualified **HOUSE SURGEON**, to commence duties at an early date. Salary, with apartments and board, £200. Applicants must state age and experience, and send copies of recent testimonials.

The Committee of Management also require the services of an **ASSISTANT MEDICAL OFFICER**. The duties will consist in attendance in the Out-patient Department three mornings weekly under the direction of the Honorary Medical Staff. Salary £50 per annum.

Applications to be sent to the Secretary, Mr. **HUBERT TEAGUE, 38, Barton Arcade, Manchester.**

## All Saints' Hospital for

**GENITO-URINARY DISEASES.**

Out-patients' Department and Offices, 49, 57, Vauxhall Bridge Road, S.W. 1.

In-patient Department, 91, Finchley Road, N.W. 8.

**RESIDENT HOUSE SURGEON** required on June 27th next for a period of six months, subject to re-election. The House Surgeon has every opportunity of gaining experience in all branches of Cystoscopy and Urethroscopy. Salary at the rate of £160 per annum, together with board, lodging and washing. Applications for the post, stating age, experience, qualifications, and enclosing copies of testimonials, should be sent to the Secretary immediately. **A. WRIGHT, Secretary.**

## Addenbrooke's Hospital,

Cambridge.

Applications are invited for the post of **HOUSE SURGEON (male)** which will be vacant on July 17th, 1922.

The appointment will be for six months. Salary at the rate of £130 per annum, with board, residence and laundry.

Candidates, who must be duly registered, are requested to forward their applications, stating age, qualifications, etc., together with copies of not more than four recent testimonials, to the undersigned, on or before Thursday, July 6th, 1922.

**W. H. HEAD,**

Secretary-Superintendent.

## Hampstead General Hospital,

Haverstock Hill, N.W. 3.

### APPOINTMENT OF GYNÆCOLOGIST.

Applications are invited for the position of Gynaecologist to the Hospital.

Candidates must be Fellows or Members of the Royal College of Physicians, London, or Fellows of the Royal College of Surgeons, England.

Applications, stating age, qualifications, together with copies of not more than three testimonials should reach the Secretary not later than July 7th. Further particulars may be obtained on application.

## Ancoats Hospital,

Manchester.

**HONORARY RADIOLOGIST.** Applications are invited for the post of Honorary Radiologist at the above Hospital. Candidates must be fully qualified and have had experience in the work.

The successful candidate will be expected to attend each morning of the week for at least two hours (10 to 12).

Further particulars may be had from the Secretary of the Hospital, to whom applications, together with three testimonials, should be forwarded not later than Monday, June 26th.

## Ingham Infirmary, South

SHIELDS.

Wanted, **SENIOR and JUNIOR HOUSE SURGEONS (Male)** to commence duty on the 1st July. Salaries £200 and £150 respectively with residence board and washing. No out-visiting. Candidates must hold registered qualifications in medicine and surgery. The appointment will be terminable by one month's notice. Applications stating age and accompanied by copies (which will not be returned) of recent testimonials, to be sent to the undersigned from whom further particulars may be obtained. **JOHN POTTER, Secretary.**

## Required, Assistant to the

Medical Superintendent at the **BRITISH HOSPITAL, PORT SAID; £500 per annum.** Free quarters, board and laundry; unmarried. Should have been House Surgeon in large hospital. Knowledge of tropical medicine desirable.—Applications to **THE CHAIRMAN, British Hospital at Port Said, 19, Berkeley Street, W. 1.**

## Male House Surgeon required

for **PETERBOROUGH INFIRMARY** on July 7th (65 beds). Remuneration at the rate of £200 p.a., with board and washing.—Applications, with testimonials, to be sent to **A. C. TAYLOR, Secretary, The Infirmary, Peterborough.**

## City of London Hospital for

**DISEASES OF THE CHEST, Victoria Park, E. 2.**

(Bus, rail, and tram, Cambridge Heath, G.E.R.)

A vacancy will occur in the post of **ASSISTANT MEDICAL OFFICER** in the Out-patient Department early in August next.

Attendance is required on Monday, Thursday and Saturday afternoons at 2 p.m. Salary at the rate of £100 per annum.

Applications are invited to be sent to the undersigned on or before Monday, the 17th July, 1922.

**GEORGE WATTS, Secretary.**

## The Cancer Hospital (Free)

(Incorporated under Royal Charter),  
Fulham Road, London, S.W. 3.

The Committee are prepared to receive applications for the post of **ASSISTANT** to the Electrical and Radio-Therapeutic Department.

The appointment is subject to rules, a copy of which can be obtained from the undersigned.

Applications, with copies of not more than three recent testimonials, to be sent in not later than Wednesday, July 5th, 1922, to

**J. COURTNEY BUCHANAN, Secretary.**

## The House Committee of the

**ROYAL VICTORIA INFIRMARY, NEW-CASTLE-UPON-TYNE,** invite applications for the post of **SECRETARY and HOUSE GOVERNOR.**

Salary £700 per ann. Candidates must give full particulars as to qualifications, experience, age, etc. Applications, with two recent testimonials, must be sent in not later than Thursday, the 29th June, 1922, and addressed "House Governor & Secretary."

**R. H. F. ORDE,**

15th June, 1922. House Governor & Secretary.

## St. Mary's Hospital for Women

AND CHILDREN, Plaistow, E. 13.

An **HONORARY ANÆSTHETIST** required for Tuesday afternoons. The appointment is for twelve months, renewable on the recommendation of the Medical Committee.

Applications, stating qualifications, etc., to be sent to the Secretary at the Hospital as soon as possible.

14th June, 1922.

## Royal United Hospital, Bath:

Wanted, a **HOUSE PHYSICIAN** and a **JUNIOR HOUSE SURGEON (Males)**. Must be duly registered medical practitioners. Salaries £180 and £150 respectively.

Applications with copies of recent testimonials must be sent to the undersigned.

By Order of the Board,  
**J. M. SHEPPARD, F.O.C.S., Secretary.**

## Monkwearmouth and

**SOUTHWICK HOSPITAL, Sunderland.**

**HOUSE SURGEON** wanted, to take up duties at end of present month. Must be fully qualified and capable.

Salary £200 to £250 will be paid according to experience and capabilities, with free board, attendance, and laundry.

Apply, giving particulars, copies of testimonials, to the Secretary, as above.

## The Middlesex Hospital, W. 1.

Applications are invited for the office of **CASUALTY MEDICAL OFFICER**, vacant 1st July. Salary £104 per annum. Board and residence provided. The appointment is for six months.

**WALTER KEWLEY,**

19th June, 1922. Secretary-Superintendent.

## The Throat Hospital,

Golden Square, W. 1.

A **RESIDENT HOUSE SURGEON** is required. Salary £100 per annum with board, laundry, etc.

Applications, with copy of three recent testimonials, should be sent in to me not later than Friday, the 7th July next.

**WM. HOLT,**

Secy. & House Governor.

## Bolingbroke Hospital,

Wandsworth Common, S.W. 11.

Applications are invited for the post of **HOUSE SURGEON**. Salary at the rate of £120 per annum with board, residence and laundry.

Applications with copies of testimonials should be sent as soon as possible to

**W. S. RANDOLPH BISS,**

Secretary-Superintendent.

## Wanted, Locum Tenens

**ASSISTANT MEDICAL OFFICER, Male,** single, under 30. Salary 7 guineas per week, with apartments, board and washing. Apply to the Medical Superintendent, **CHESHIRE COUNTY MENTAL HOSPITAL, Parkside, Macclesfield.**

## The Metropolitan Asylums

BOARD invite applications for appointment as SENIOR ASSISTANT MEDICAL OFFICER in their Children's Hospital Service for duty at QUEEN MARY'S HOSPITAL FOR CHILDREN, Carshalton, Surrey. The Hospital accommodates 810 children, and there is a staff of five Assistant Medical Officers. A large proportion of the beds are reserved for Orthopaedic cases (including Surgical Tuberculosis). Candidates must be under thirty-five years of age and unmarried, and preference will be given to those who have had previous surgical experience with some experience of administration. Commencing salary, including bonus, £845 5s. per annum rising (with bonus at present rate) to £709 13s. per annum.

The candidates appointed will be required to reside in the Hospital, and to pay for board, lodging, and washing at the rate fixed from time to time by the Board's Finance Committee. At present the rate is £130 per annum.

Applications to be received not later than 10 a.m. on Thursday, 29th June, 1922, on forms obtainable from the Deputy Clerk, Metropolitan Asylums Board, Embankment, London, E.C. 4.

G. A. POWELL,  
Deputy Clerk to the Board.

## The Metropolitan Asylums

BOARD invite applications for appointment as JUNIOR ASSISTANT MEDICAL OFFICER in their Children's Hospitals Service for duty at QUEEN MARY'S HOSPITAL FOR CHILDREN, Carshalton, Surrey. The Hospital accommodates 810 children, and there is a staff of five Assistant Medical Officers. A large proportion of the beds are reserved for tubercular cases, especially those requiring surgical treatment. Candidates must be under thirty-five years of age, and unmarried. Salary £515 6s. per annum (including bonus).

The candidates appointed will be required to reside in the Hospital, and to pay for board, lodging, and washing at the rate fixed from time to time by the Board's Finance Committee. At present the rate is £130 per annum.

Applications to be received not later than 10 a.m. on Thursday, 29th June, 1922, on forms obtainable from the Deputy Clerk, Metropolitan Asylums Board, Embankment, E.C. 4.

G. A. POWELL,  
Deputy Clerk to the Board.

## Norwich Incorporation of THE POOR.

### APPOINTMENT OF RESIDENT MEDICAL OFFICER.

The Guardians of the above Incorporation require a male Resident Medical Officer for their Institution, who will also be required to act as Medical Officer to the Board's Scattered Homes for Children. Salary £500 a year, with board and attendance in small furnished flat.

Applicants should be between the ages of 25 and 35, and should have held posts as House Surgeon or House Physician at a General Hospital, and preferably had experience of mental cases. Experience in a similar Institution will be an additional recommendation.

For further particulars of duties, etc., apply to  
E. J. W. HUGGINS,  
St. Andrew Street, Clerk to the Guardians,  
Norwich. 17th June, 1922.

## Queen Charlotte's Lying-in HOSPITAL, Marylebone Road, N.W.1.

ASSISTANT RESIDENT MEDICAL OFFICER. (Male or Female) required. Applicants must be registered. The appointment is for four months. The selected candidate will be expected to proceed to the appointment of Senior Resident Medical Officer (also for four months) at the end of the term of office, on the recommendation of the Medical Staff. The salary of the Assistant Resident Medical Officer is at the rate of £80 per annum, and of the Senior Resident Medical Officer £100 per annum, with board, residence and washing allowance (4s. per week).

Applications with copies (not originals) of not more than three testimonials will be received by the Secretary up to 30th June. Canvassing is prohibited. Duties to commence 1st August.

ARTHUR WATTS, Secretary.

## Dewsbury & District General INFIRMARY.

HOUSE SURGEON wanted. Salary £200 per annum, with board, residence, and laundry. Candidates must be fully qualified and registered.

Applications, stating age and qualifications, together with copies of three testimonials, to the undersigned.

EDWARD HEMINGWAY, Gen. Secretary.

## Dundee District Asylum.

A.M.O. (Male) required for the Institution at Westgreen. Salary at the rate of £293 per annum, with board, apartments, and laundry.

Applications, with copies of testimonials to be lodged with the Medical Superintendent.

## Camberwell Infirmary.

### ASSISTANT MEDICAL SUPERINTENDENT.

The Guardians of the Poor of the Parish of St. Giles, Camberwell, invite applications for the appointment of Assistant Medical Superintendent for their Infirmary.

Remuneration at the rate of £500 per annum, rising by yearly increments of £50 to a total of £850, with board, lodging, and washing provided.

Candidates should be between 30 and 40 years of age, and must be prepared to carry out the rules and regulations pertaining to the Infirmary, the Institution, and the scattered Homes. It is essential that they should have had experience as Resident Medical or Surgical Officers in an Infirmary or Hospital.

Candidates must possess the requisite qualification to practise in Medicine and Surgery prescribed in the General Consolidated Order of the Local Government Board, and be registered under the Medical Act, 1858.

Forms of application can be obtained upon application here, and the same must, when duly completed, be returned to me not later than the 30th inst.

Information as to the duties can be obtained upon application to the Medical Superintendent (in the first instance by letter), at the Infirmary, Brunswick Square, Camberwell, S.E. 5.

H. ERNEST MOTT, Clerk to the Guardians.  
Guardians' Offices,  
29, Peckham Road, S.E. 5. 13th June, 1922.

## Bristol General Hospital.

A Meeting of the Election Committee will be held at the Hospital on Wednesday, July 12th next at 1 o'clock p.m. to appoint an HONORARY DENTAL SURGEON.

By Section 8, s. 1 of the Rules of the Hospital, no person shall be eligible to the office of Dental Surgeon unless he possesses a registered surgical qualification or be a Licentiate in Dental Surgery of a College of Surgeons of Great Britain or Ireland, and produce evidence thereof to the Committee.

Attention of candidates is drawn to Rule 6, Section 7: "No member of the Honorary Staff shall hold an appointment in any other medical charity without sanction of the Committee." Candidates are requested to send their applications, with copies of testimonials and proof of qualification, to the undersigned on or before Monday, July 10th next, from whom further particulars may be obtained.

By order of the Committee,  
THOMAS W. GREGG,  
14th June, 1922. Secretary.

## Blackburn & East Lancashire ROYAL INFIRMARY.

Wanted, SECOND HOUSE SURGEON (male) at a salary of £250 per annum, with board, residence, laundry, &c. to commence duties as early as possible. The hospital contains 152 beds with X-Ray and Massage Departments, V.D. Clinics, Pathological Laboratory, Eye, Ear, Nose and Throat Dept., &c. Last year there were 2489 in-patients and 6942 out-patients. There were 1856 in-patient operations and 708 out-patient operations. There is no outside work and the resident staff consists of three Surgeons.

Applications, with copies of testimonials, stating age, nationality, experience, &c. to be sent to the undersigned as early as possible.

Royal Infirmary, NATHAN A. SMITH,  
Blackburn. General Supt. & Secretary.  
June 16th, 1922.

## East London Hospital for CHILDREN & DISPENSARY FOR WOMEN, Shadwell, E. 1.

### ASSISTANT SURGEON.

The Board of Management invites applications for the post of Assistant Surgeon to see out-patients on two days in each week.

By Section VI, Sub-section 20 of the Constitution of the Hospital, every Assistant Surgeon shall be a Fellow of the Royal College of Surgeons of England.

An honorarium of £50 is attached to the post. Applications, with copies of testimonials, should be addressed to the undersigned and delivered at the Hospital on or before Saturday, July 1st, 1922.

By Order of the Board of Management,  
W. M. WILCOX, Secretary.

## The General Hospital, Birmingham.

Applications are invited for the following Resident posts as from July 15th next:-

HOUSE PHYSICIAN (six months). Salary £100.\*

HOUSE SURGEON (nine months, first three months in Casualty Department). Salary £100.\*

HOUSE SURGEON TO SPECIAL DEPARTMENTS (Skin and Venereal). Salary £125.\*

\* Salaries will be reduced by £30 on Oct. 1st next. Applications should be sent to the House Governor before July 1st.

## THE ASSOCIATION OF CERTIFICATED BLIND MASSEURS, 224-3, GREAT PORTLAND STREET, LONDON, W. 1. (Telephone: LANGHAM 2542).

President:

Sir ROBERT JONES, K.B.E., C.B., F.R.C.S.

Fully-qualified Blind Masseurs and Masseuses (trained at St. Dunstan's and the National Institute for the Blind) can be obtained on application to Secretary.

## City of Manchester.

### MEDICAL OFFICER OF HEALTH.

Applications are invited from duly qualified medical practitioners not exceeding 45 years of age, for the office of Medical Officer of Health for the City of Manchester, at a salary of £1,700 per annum for the first year, rising to £2,000 by annual increments of £100, such salary not to bear any bonus. A printed statement of the duties and conditions attached to the appointment will be forwarded on application, by letter only, addressed to the Town Clerk, and all candidates are required to acquaint themselves therewith.

Sealed applications, with recent testimonials endorsed "Medical Officer of Health" are to be delivered to the Town Clerk, Town Hall, Manchester on or before the 31st day of July, 1922.

Canvassing in any form, oral or written, direct or indirect, will be regarded as a disqualification, and applications and testimonials, or copies thereof, are not to be sent to members of the Committee or of the Council.

Town Hall, Manchester. P. M. HEATH,  
15th June, 1922. Town Clerk.

## Township of Leeds Infirmary.

### ASSISTANT MEDICAL OFFICER.

The Guardians of the above Township require the services of an Assistant Medical Officer for the Indoor Institutions, Beckett Street, Leeds. Salary £380 per annum, together with board, washing, apartments, and attendance (subject to deductions under the Poor Law Officers' Superannuation Act, 1893).

Applicants must be in possession of both medical and surgical qualifications, as required by the Orders of the Ministry of Health. The Medical Superintendent of the Township Infirmary will give any information as to duties, etc., on application to him.

Applications, stating qualifications, and giving particulars of present and prior occupations, and Military service, if any, together with copies of three recent testimonials, must be received by me not later than noon of Saturday, the 8th July.

Selected candidates will receive due notice to attend.

JAMES H. FORD, Clerk to the Guardians.  
Poor Law Offices,  
South Parade, Leeds. 12th June, 1922.

## The Royal Eye and Ear HOSPITAL, Bradford.

The Committee invite applications for the posts of HONORARY OPHTHALMIC SURGEON, HONORARY ASSISTANT OPHTHALMIC SURGEON, and

HONORARY AURAL SURGEON, for which the following qualifications are requisite, viz.—F.R.C.S. of England, Edinburgh or Ireland, Master in Surgery of a British University, or a Diploma or Degree in Ophthalmic or Aural Medicine and Surgery. The successful candidates will be expected to confine themselves to their own speciality in both hospital and private practice.

Applications, stating age, qualifications and experience, accompanied by two or more testimonials to be sent to the undersigned.

N.B. The Honorary Assistant Ophthalmic Surgeon is a Candidate for the Senior post.

C. V. WOODCOCK, Secretary.

## Royal South Hants & Southampton HOSPITAL, Southampton.

Required, a HOUSE PHYSICIAN. Candidates must be doubly qualified and willing to engage for twelve months. Salary £150 per annum, with rooms, board and laundry. Duties to be taken up on 20th July, 1922.

Applications, stating age, with printed copies of testimonials (limited to five) to be sent to the undersigned before the 1st July, 1922.

T. A. FISHER HALL,  
13th June, 1922. Secretary.

## East London Hospital for CHILDREN, Shadwell, E. 1.

Applications are invited for the post of HOUSE SURGEON (male), the appointment is for six months. Board, residence and laundry are provided. Salary at the rate of £125 per annum.

Applications with testimonials to be sent to the undersigned not later than Saturday, July 8th, 1922.

W. M. WILCOX, Secretary.



## The Hospital for Sick Children

Newcastle-upon-Tyne. (74 beds).

Applications are invited for the post of JUNIOR RESIDENT MEDICAL OFFICER (Male). Salary £150 per annum, with board, residence and laundry. Duties to commence 1st July.

Application, stating age and copies of testimonials to be sent to the Secretary, Mr. NEIL BRODIE, 18, City Road, Newcastle, not later than 26th June.

Telephone: Langham 2723.  
Telegrams: "Assistiamo, London."

## NURSES

MALE OR FEMALE.

TRAINED NURSES FOR MENTAL, MEDICAL, SURGICAL AND FEVER CASES.

Nurses reside on the premises and are available for urgent calls, Day or Night.

### THE NURSES' ASSOCIATION

(In conjunction with the MALE NURSES' ASSOCIATION).

29, York Street, Baker Street, London, W.1.  
(Mrs.) MILLICENT HICKS, Superintendent  
W. J. HICKS, Secretary.

ESTABLISHED OVER 40 YEARS.

## Mr. PERCIVAL TURNER

4 & 5, ADAM STREET, STRAND, W.C. 2.

Telegrams: "EPHOMIAN, LONDON." Telephone: GERRARD, 399. After Office Hours—Epsom, 693

LOCUM TENENS provided—no charge to Principals.

Every description of AGENCY and ACCOUNTANCY work undertaken

FOR DISPOSAL.—PRACTICES AND PARTNERSHIPS in Town and Country. Incomes from £500 to £4,000 a year. Full details will be sent free to intending purchasers on application.

## ST. LUKE'S HOSPITAL.

ESTABLISHED 1751.

PRIVATE NURSING STAFF DEPARTMENT.

TRAINED NURSES for MENTAL and NERVOUS CASES can be had immediately. Apply to LADY SUPERINTENDENT, 19, Nottingham Place, London, W.1. Telephone: Mayfair 5420.

NORTHERN BRANCH.—Apply, LADY SUPERINTENDENT, 57, Clarendon Rd., Leeds. Phone: Leeds 2616.

THE

## NEW MENTAL NURSES CO-OPERATION,

139, Edgware Road, Marble Arch, W.

Specially trained Nurses for Mental and Nerve cases. All Nurses are insured against accident. Apply the SUPERINTENDENT.

Telegrams: "Psyconurse, Edge, London." Telephone: No. 6105 Paddington.

## ARMY & NAVY MALE NURSES CO-OPERATION.

Patroness: HER MAJESTY, QUEEN ALEXANDRA. This Society supplies fully-trained Medical, Surgical or Mental Male Nurses, Valet-Attendants and Masseurs of unquestionable character, who have been thoroughly trained in the Naval and Military Hospitals.

Address: SECRETARY, 11A, Welbeck St., London, W. Tel.: Restoring, London. T/N: 2534, Mayfair.

St. John's and St. Thomas's HOUSE.—Trained and experienced MEDICAL, SURGICAL, MATERNITY NURSES and MASSEUSES can be obtained by application, personally or by letter, to the Sister-in-Charge, 12, Queen's Square, W.C.1. (Tel. No. 7161 Museum) or to Matron, St. Thomas's Hospital (Tel. 4191 Hop). Telegraphic address: "Private Nurses, London."

# JOHN BELL & CROYDEN, Limited,

Incorporating ARNOLD & SONS,

have been exclusively instructed to dispose of a number of soundly established and lucrative Practices situated respectively LONDON CITY, LONDON SUBURBS, HOME COUNTIES, MIDLAND COUNTIES AND WALES. THE MEDICAL TRANSFER DEPARTMENT is under the direction and control of the Company's GENERAL MANAGER, whose experience places at the disposal of the Profession

## PERFECT SERVICE—RELIABILITY—INTEGRITY & COURTESY

in all matters pertaining to

PURCHASE and SALE OF PRACTICES and in the SELECTION OF LOCUM TENENS.

Please address your communications to—

The General Manager, JOHN BELL & CROYDEN, Ltd.

Incorporating ARNOLD & SONS, 6, Giltspur Street, E.C.

Telegraphic Address: "Instruments, London."

Telephone No. City 5240.

## MALE NURSES LTD.

Telephone 5989 MAYFAIR (TEMPERANCE) ASSOCIATION 24, NOTTINGHAM ST., W.1.

Telegrams "CENTLEST, LONDON."

## FEMALE NURSES

Telephone 5989 MAYFAIR (TEMPERANCE) ASSOCIATION 24, NOTTINGHAM ST., W.1. Telegrams "CENTLEST, LONDON."

CERTIFICATED HOSPITAL NURSES (MALE AND FEMALE) AVAILABLE DAY AND NIGHT FOR MEDICAL, SURGICAL, MENTAL, AND ALL CASES. TERMS FROM £3 3/- ALL NURSES ARE FULLY INSURED AGAINST ACCIDENT M. J. QUINLAN, SECRETARY.

## MALE NURSES Temperance CO-OPERATION, Ltd.

Phone: Mayfair 3297. Telegrams: Assuaged, London. Superior Male Nurses and Valet Attendants for Mental, Medical, Travelling, and all cases.

8, HINDE STREET, MANCHESTER SQUARE, LONDON, W.1.

Both Institutions are under the same Management.

Secretaries:  
W. WALSH.

MANCHESTER—237, Brunswick Street.

Phone: Central 4699. Tele.: Assuaged, Manchester

NORTHERN BRANCHES—

EDINBURGH—7, Torphichen Street.

Phone: Central 2715. Tele.: Assuaged, Edinburgh

## Mental Nurses' Association, Ltd. (FEMALE)

Phone: Mayfair 2287. Telegrams: Isolation, London.

Superior Mental Nurses (Male and FEMALE) supplied at a moment's notice day or night for all Nerve and Mental cases.



All Nurses are insured under Employers Liability Act.

TELEPHONES:  
London, 1277 Mayfair.  
Manchester, 5213 Central.  
Glasgow, 477 Central.  
Dublin, 531 Ballsbridge.

# NURSES MALE AND FEMALE

TELEGRAMS:  
Tactear, London.  
Surgical, Glasgow.  
Tactear, Manchester.  
Tactear, Dublin.

## CAVENDISH TEMPERANCE MALE NURSES CORPORATION, LIMITED.

LONDON: 43, NEW CAVENDISH ST. MANCHESTER: 176, OXFORD ROAD. GLASGOW: 26, WINDSOR TERRACE. DUBLIN: 23, UPPER BAGGOT ST. Superior trained Nurses for Medical, Surgical, Mental, Dipsomania, Travelling and all cases. Nurses reside on the premises, and are always ready for urgent calls, Day or Night. Skilled Masseurs and Masseuses and good Valet Attendants supplied.

Terms from £3 3s. 0d.

Apply, THE SECRETARY or LADY SUPERINTENDENT.

**MR. HERBERT NEEDES,**31, BEDFORD ST., STRAND, W.C.2.  
(Gerrard 3873.) (Estab. 1840.)

This Agency (the Oldest in the Kingdom) undertakes the SALE of PRACTICES and PARTNERSHIPS, AUDITS and VALUATIONS and the SUPPLY of LOCUMS and ASSISTANTS.

No Charge to Purchasers. All Business receives Mr. NEEDES' personal attention.

1. HALF SHARE of good class Practice in outlying suburb returning about £1,000 a year. No panel. Appts. over £500, with vacancy on staff of local Hospital. Convenient house and garden on lease at £8. Partner should be under 40 years of age, and one keen on surgery preferred. Moderate premium from suitable man.
2. HALF SHARE of unop. PRACTICE in desirable residential district within 100 miles. Returns about £2,000. Excellent shooting, fishing, golf, etc. Small house available. Succession to whole in 5 years. Prem. £1,700. Suitable for man 30-35.
3. SALES.—PRACTICE of £1,400 in small industrial district on fringe of beautiful country. No resident opposition. Panel and appts. £700. Nice house and garden. Rent under £40. Price £2,000.
4. WEST OF ENGLAND.—In a residential Suburb of good city, a PRACTICE of about £1,400 a year, including a select panel of 800. Vendor does not dispense. Fee: 3/6 to 10/6. Mids. 3 to 10 gns. Very convenient residence with garden. Rent £80.
5. IN ONE OF THE BEST RESIDENTIAL SUBURBS of Manchester, an old estab. PRACTICE, in vendor's hands 14 years, and returning £300 a year, including small panel of over £100 & appt. of £50-60. Car not required. Good semi-detached double-fronted house with garden back and front. Price for good will and freehold only £2,500, of which £800 can remain on mortgage.
6. WEST RIDING (Yorks).—PRACTICE in country town averaging over £2,500 a year (1921 over £1,000) including panel of 1,900. Good fees and scope for surgery. Two houses can be had at joint rental of £112. Premium £3,750, of which one third can be paid by deferred instalments. Would suit two friends, though can be worked single-handed by active incumbent.
7. GOOD CLASS WEST-END PRACTICE for sale, with efficient Partnership introduction. Average returns about £2,000. Expenses confined to car. Commodious residence, leasehold to go with goodwill. Prem. for both £5,000, of which £2,000 can be paid in yearly instalments.
8. REQUIRED country PRACTICE of £800 to £1,200 p.a. in any part South of Derby. House with 5-8 bedrooms and garden essential, preferably on lease. Cash for suitable investment.

Details in reply to above received in strict confidence.

**THE MEDICAL AGENCY,**

WATERGATE HOUSE,

York Buildings, Adelphi, W.C.2.

Managing Director: J. A. REASIDE.

Telegrams: "TUBERCLE, LONDON." Telephone: GERRARD, 8351.

The Agency undertakes the Transfer of Practices. Introduction of Partners, Investigations for Purchasers, Valuations, Negotiation of Terms, and Supply of Locum Tenens and Assistants, and Medical Accountancy.

**LEE & MARTIN, LTD.,**

THE BIRMINGHAM MEDICAL AGENCY,

71, TEMPLE ROW, BIRMINGHAM.

TELEGRAMS: "Locum, Birmingham." TELEPHONE: 1116 Central, B'ham.

Transfers of Practices and Partnerships arranged

Accounts Investigated & Income-tax Returns prepared  
"LOCUMS" AND ASSISTANTS SUPPLIED.

**THE MANCHESTER MEDICAL AND SCHOLASTIC ASSOCIATION, LTD.,**

8, KING STREET.

Telegraphic Address: "STUDENT, MANCHESTER." TRANSFERS and PARTNERSHIPS arranged, and Investigations, Valuations, &c. undertaken. ASSISTANTS & LOCUM TENENS SUPPLIED. PRACTICES for sale. Particulars on application.

**DR. J. FIELD HALL,**

(FIELDHALL LIMITED)

MEDICAL TRANSFER AGENT,

28, Craven Street, Strand, W.C.2.

Telephones: GERRARD 4687.

GERRARD 2099.

Telegrams: "FIELDHALL, WESTRAN—LONDON."

ESTABLISHED 1863.

**PEACOCK & HADLEY,**

(Mr. A. HADLEY)

MEDICAL TRANSFER AGENCY,

19, Craven Street, Strand, W.C.2.

Telegrams: Herbaria, Westrand—London.

Telephone: Central 1112.

LOCUM TENENS and ASSISTANTS supplied.

**FOR DISPOSAL.**

1. MIDLANDS.—Large Town. Old-established PRACTICE, returning about £4,000 a year. Panel and clubs yield £1,700. Good house, moderate rent. Premium 1½ years' purchase.
2. SOUTH COAST TOWN.—Middle-class private and panel PRACTICE. Receipts last year £2,250, about half from panel and clubs. Good house, 12 rooms. House and Practice for sale on very easy terms.
3. NORTH WALES.—Popular Holiday Resort. Good-class PRACTICE held many years by Vendor. Receipts about £2,000 a year. Large house with modern requirements. Long lease. Premium £3,000.
4. NORTHERN COUNTY.—Near Coast. Town and Country PRACTICE. No opposition. Receipts average £2,700 p.a. Good house, garage, etc. Premium £3,000. Good schools, &c. near.
5. MANCHESTER.—Middle and working-class PRACTICE. Receipts £1,500 a year (£1,000 from Health Insurance). Scope for increase. Nice corner house. Rent £40, long lease. Premium £1,750.
6. YORKS.—Suburb of large town. General and panel PRACTICE. Receipts £2,300 p.a. Panel 1,770. Good corner house. Rent £50, lease. Premium £2,700 on very easy terms.
7. SEASIDE RESORT (SOUTH WALES).—Middle-class PRACTICE, now yielding £800 to £900 a year. Scope for increase. Good fees. Good 12-roomed house, large garden, garage, etc. Rent £120. Premium £1,000.
8. SMALL SANATORIUM.—Situating in a beautiful district, Midlands. Accommodating 15 to 20 patients. Profits last year, £2,000. Ten years' lease. Goodwill and furniture £2,000.
9. LONDON, N.E.—Old-established PRACTICE. Receipts about £1,750 (£950 from panel). Commodious house £75 p.a., lease if desired. Branch surgery, rent £42. Premium £2,500.

No charge to purchasers or for enquiries.

**MR. J. C. NEEDES,**

(P. W. NEEDES).

Medical Partnership and Conveyancing Agency

8, DUKE STREET, ADELPHI, W.C.2.

(Late 1, ADAM STREET, ADELPHI.)

Telegrams: "Aquirement, Westrand, London." Telephone: Gerrard 3543.

This Agency (which has been established since 1875) undertakes the Sale of Practices, the Introduction of Partners, Valuations, Investigations on behalf of Purchasers, the supply of trustworthy Locum Tenens and Assistants, and every other description of Medical Agency business.

N.B.—No charges made to purchasers.

1. SOUTH-EAST COAST.—In a favourite seaside watering place, a well-established mixed-class and non-dispensing PRACTICE, worth last year £2,213 including panel £859 and clubs £234. Visits 3/6 to 31/6. Very little midwifery (12 cases yearly) or night work. House (10 rooms) must be purchased for £1,000 but only £200 required down and remainder on Mortgage. Moderate premium (£2,750) will be accepted for practice, part by instalments.
2. SURREY.—In a very pleasant residential town within an hour's run of London. A small PRACTICE worth last year nearly £350 is for disposal through advancing age of the Incumbent. Held many years. Visits 5/- to 21/-. Midwifery refused. Desirable residence containing 3 reception rooms, 5 bedrooms, dressing room, bathroom, etc. with about ½ an acre of garden attached. Rent £110 a year on lease. Ample scope for an energetic gentleman.
3. SOUTH AFRICA.—University and Hospital Town. Old-established non-dispensing PRACTICE, held 15 years by present Incumbent. Income about £1,000 a year. Usual fee 10/6; a few at 5/- and 7/6. Midwifery discouraged (about 30 cases yearly). Fees 10 guineas upwards. Consulting room in centre of town. Residence available with ample accommodation. Premium £1,000. Six months' introduction given.
4. ABOUT 60 MILES FROM LONDON.—In a beautiful Country District, within a few miles of a large Town, an old-established PRACTICE (held 30 years by vendor), worth £2,000 p.a., of which over £1,500 is derived from panel and appointments. Easily worked. Good house (3 reception rooms, 6 bedrooms, bathroom, &c.). Rent £80 a year on lease. Premium only £2,500. Good hunting, fishing, shooting, &c.

**BLUNDELL & CO.,**

Walter House, 418-422, Strand, W.C.2.

(Entrance Bedford Street.)

Telephone: 7148 GERRARD.

Inland Telegrams: "BLUNDELL, 418, STRAND." Cable Address: (via Eastern) "RECALLABLE, LONDON."

LOCUMS SUPPLIED.

**West End.—Promising**

NUCLEUS of £400, worked at Consulting Rooms in best position, with long lease. Fees 1 gn. and 2 gns. Vendor has neglected the practice, and the prospects ought to be very good. Premium only £250.

**Wales.—Very old-established**

PRACTICE in country town in agricultural district. Receipts average £1,350. Scope for minor surgery. Good house and garden, garage, etc. Good fishing, tennis, etc.

**Channel Isles.—Promising**

NUCLEUS.

**Unopposed Country Practice**

near the Sea. Receipts about £1,400. Panel 600. Fees good. Prosperous district. Good house with bathroom, garage and an acre of garden.

**Near Oxford Circus.—Practice**

of £750 including panel about 1,200. Valuable lease.

**Australia.—Unopposed**

PRACTICE of £1,350. Appointments £250. Farming district with beautiful climate. Rent £78. Premium £850.

**North Riding.—Unopposed**

NUCLEUS. Panel £200. Poor Law and M.O. appointments. Station in the place. Nominal premium.

**London, S.W.—Mixed Practice**

of £1,700, with 1,170 panel, near West End. Fees 3/6 up. Very convenient house with long lease. Rent £70.

**Death Vacancy.—North**

Wales. Country PRACTICE of about £1,200 including 1,000 panel. Appointments £100 and good-class private practice.

**Cheshire.—Middle and work-**

ing-class PRACTICE on the coast. Receipts £2,300 increasing. Panel 1,100. Premium £2,500. Convenient house in best position.

**East London.—Practice of**

£1,200, near the City. Panel £800. Rent £35.

**Cathedral City.—Middle and**

working-class PRACTICE of £1,530 including panel 1,700. Opposition declining. Scope for active man. House in best position.

**Liverpool.—Partnership with**

Succession to good-class Practice of £3,000 in residential suburb. Small panel.

**Home County.—Old estab-**

lished unopposed PRACTICE of £1,250 in nice district near two towns and not far from the sea. Panel £500, appointment £22. Good house and large garden can be bought. Good society and golf. Vendor retiring.

**Derbyshire.—Half-share of**

£1,500. Premium £750, £500 down. Small town near good schools. Panel 1,200. Appointments £180. House with low rent.

**West Riding.—Practice of**

£1,200 in important town. Panel 1,100. No midwifery. Great scope. Rent £45. Premium £1,500.

**County Town in the Midlands.**

Middle and working-class PRACTICE of £1,500. Panel £370. Appointments £280. Scope for increase. House with 5 bedrooms. Premium £1,500.

**Midlands.—Practice of £900**

in small country town in beautiful district. Good proportion of panel and appointments. Scope for active man. Vendor retiring. Good house and garden, can be rented.

**Midlands.—Partnership.**

Third share of £2,100 in residential place. Scope for surgery.

**West Riding.—Middle and**

working-class PRACTICE of £2,300. Panel 1,770. Rent £45.

**Nursing Home.—Profits have**

been over £1,000. Rent £80. Price £800, including furniture. Would suit a lady doctor. Purchasers stating their requirements can have Particulars of other Practices not advertised.

# THE SCHOLASTIC, CLERICAL & MEDICAL ASSOCIATION, LIMITED

(Formerly at 22, Craven Street, Trafalgar Square, W.C.)

## 12, STRATFORD PLACE, OXFORD STREET, W.1.

Telegraphic Address: TRIFORM, WESDO, LONDON.

Telephone: MAYFAIR 2400.

**Practices and Partnerships for Disposal. No charge to Purchasers.**

**LONDON, S.E.—(1)** Very old-established PRACTICE over £1,000 p.a. in Suburban District. Panel 620. No midwifery. No conveyance. Very attractive detached corner house (6 bedrooms). Very good garden. Premium 1½ years' purchase.

**SOUTH OF ENGLAND.—(2)** Favourite Watering Place. Old-established PRACTICE about £1,150 p.a., including good appointments and panel. Premium £1,500.

**SOUTH OF ENGLAND.—(3)** Under 85 miles from London. Well-established PRACTICE over £2,000 p.a., in delightfully situated Market Town. Panel 970. Good detached house. Cottage Hospital.

**MIDDLESEX.—(4)** PARTNERSHIP in middle and working-class Practice over £2,000 p.a. Panel 2,000. House with 3/4 bedrooms. Rent £45. Premium one-half share £1,500.

**KENSINGTON.—(5)** PARTNERSHIP (with view to succession) in good-class non-dispensing Practice, £2,400 p.a., in Residential District. Premium one-third or one-half share 2 years' purchase Partner must be experienced in good-class Practice.

**SCOTLAND.—(6)** Health Resort. Good-class increasing PRACTICE £700. Panel 270/280. Commodious and convenient house. Sport of all kinds.

**NORTH-WEST OF ENGLAND.—(7)** PRACTICE about £1,400 in one of the richest farming districts, easy distance of Health Resort. Panel 750. Practice compact. Good family house (6 bedrooms). Rent £45. Premium £1,600 or near offer, payable £1,000 down.

**YORKSHIRE (WEST RIDING).—(8)** ASSISTANT required (with view to Partnership or Succession) in unopposed Country Practice about £1,500 p.a. Panel 1,643. After preliminary assistantship one-third share offered without payment of premium and remainder at 1½ year's purchase.

**LONDON, N.—(9)** Cash and Panel PRACTICE £3,000 p.a. Panel 2,600 (about). Premium 1½ years' purchase, part by instalments. Would suit two friends.

**TRANSVAAL.—(10)** Unopposed PRACTICE £2,000 p.a. in agricultural district. About three-fourths income from appointments. Premium £2,000 part by instalments.

**HOME COUNTIES.—(11)** PARTNERSHIP in good Country Town Practice over £5,400. Panel under 2,000. One-fifth Share at 2 years' purchase. Scope for speciality.

**NORTH LONDON.—(12)** Good middle-class PRACTICE between £2,800/£3,000 per annum in outlying Residential District. Panel 755. No appointments. Excellent house. Premium 1½ years' purchase.

**UNIVERSITY TOWN.—(13)** Well established PRACTICE suitable for Lady Doctor. Income over £1,500 increasing and being carried on by Medical Woman. (Appointments worth nearly £300, limited Panel). Premium £1,300.

**YORKSHIRE (WEST RIDING).—(14)** PRACTICE over £1,100 in small Market Town. Panel 960. Not much Midwifery. Detached house (5 bedrooms and good garden). Rent £70. Premium £1,500.

**NORTH OF ENGLAND.—(15)** Lucrative PRACTICE £2,700 p.a. with in easy distance of Liverpool. Panel about 1,500. Pleasantly situated house with 5 bedrooms. Premium £3,500.

**LAKE DISTRICT.—(16)** Unopposed Country PRACTICE £1,200/£1,400 p.a., in Agricultural District. Panel 600. Good house, garden and garage. Rent £50. Premium only £1,500.

**NORTH OF ENGLAND.—(17)** Mixed PRACTICE about £2,200 p.a. in University City. Panel 2,500. Rent £55. Premium £2,700.

**WEST OF ENGLAND.—(18)** Small Market Town. PRACTICE about £1,700. Panel 250. Detached house (5 bedrooms) in good repair. Rent £35. Premium £1,650. Cottage Hospital.

**PRIVATE ASYLUM.—(19)** for Treatment of Mental, Nervous and Kindred Disorders. Half-share PARTNERSHIP in very old-established Home, licensed under the Acts. Capital required about £3,500.

**SPECIAL X-RAY & ELECTRO-THERAPEUTICAL PRACTICE.—(20)** Nearly £1,300 p.a. in University City. Excellent opening for young, energetic man. Reasonable offer entertained.

**SOUTH OF ENGLAND.—(21)** Seaport Town. PARTNERSHIP in well-established Practice over £4,000. Premium one-third share 1½ years' purchase. Purchaser must be good Surgeon.

**LONDON, S.W.—(22)** (Near West End). Mixed PRACTICE about £2,000 p.a. in Suburb. Panel about 1,500. Rent of House £70. Premium 1½ years' purchase.

**FAVOURITE HOME COUNTY.—(23)** PARTNERSHIP in good-class Practice in picturesquely situated Country Town. Panel 860. Well built house (4½ bedrooms). Premium for share worth about £1,400, 2 years' purchase.

**SOUTH OF ENGLAND.—(24)** JUNIOR PARTNER required in Town and Country Practice, about £2,000 p.a. Panel 2,000. One-third share after preliminary assistantship at 2 years' purchase. Cottage Hospital. Good scope.

### ASSISTANTS AND LOCUM TENENS SUPPLIED.

Schools and Tutors in all parts of the Country and Abroad recommended for Boys and Girls.

Revised and amplified edition of *MEDICAL PARTNERSHIPS, TRANSFERS AND ASSISTANTSHIPS* (BARNARD & STOCKER). Published by the Association, price 13/9.

All enquiries to be addressed to Mr. A. V. STOREY, General Manager.

Printed and published by the British Medical Association, at their Office, No. 429, Strand, in the Parish of St. Martin-in-the-Fields, in the County of London.

**WESTERN AUSTRALIA.—(25)** Well-established PRACTICE over £3,500, in good Town, easy access of important City. Good house, with 5 acres of land to be purchased. Premium for Practice £1,250.

**LANCASHIRE.—(26)** PARTNERSHIP (with preliminary Assistantship).—In old-established good-class Practice in Manufacturing Town. No panel. Visits 3/6 to £2/2. Premium for share worth about £750 p.a., 1½ years' purchase, with option to increase. Partner must be a physician.

**NORTH OF ENGLAND.—(27)** Inland Health Resort. THIRD PARTNER required in increasing mixed Practice £3,400 p.a. Panel 1,900. Premium one-fourth share 2 years' purchase with option to increase up to one-third. Cottage Hospital.

**MIDLANDS.—(28)** Important up-to-date Town. PARTNERSHIP in Practice over £2,100. Panel 1,500. Semi-detached corner house (8 bedrooms). Premium two-fifths share 1½ years' purchase, to include ½ of any increase in receipts. Partner should be about 30 and married.

**DEATH VACANCY (NORTH WALES)** near coast.—(29) Lucrative country PRACTICE, over £3,000 p.a. (Appts. £550). Panel about 1,000. Premium £2,500.

**SOUTH COAST.—(30)** Seaport Town. Well-established PRACTICE of £2,400. Panel 1,375. Double-fronted detached house with 5 bedrooms, etc. Rent £65. Premium 1½ years' purchase.

**EAST ANGLIA.—(31)** Small, select Seaside Resort. Non-dispensing PRACTICE over £900. Panel 300. Excellent house with 8 bedrooms. Premium 1½ years' purchase.

**EASTERN COUNTIES.—(32)** Unopposed Country PRACTICE in agricultural district. Receipts 1921, £1,900. Panel 680. House (6 bedrooms, etc.) with garden one acre. Rent £60. Premium 1½ years' purchase.

**SOUTH OF ENGLAND.—(33)** Seaport Town. THIRD PARTNER required in increasing Practice about £2,800 p.a. Panel 2,500. Share worth £650 with option to increase later. Premium £1,000.

**WEST MIDLANDS.—(34)** Junior PARTNER required in rapidly increasing old-established good class Country Practice over £2,000 p.a. Panel 950. Premium, one-third share, £1,000. Knowledge of surgery advantageous.

**EAST MIDLANDS.—(35)** PARTNERSHIP (with preliminary Assistantship) in old-established Practice over £3,000 in Country Town. Panel 2,200. Premium one-half share, 1½ years' purchase on easy terms.

**SOUTH MIDLANDS.—(36)** PARTNERSHIP (with view to succession) in unopposed country Practice over £2,000 p.a. in good-class residential district. Panel about 1,000. One-third share after short preliminary Assistantship. Partner should have some experience in general practice and be able to cycle or motor-cycle.

**NORTH AFRICA.—(37)** Special Ophthalmic PRACTICE of £3,400 among English residents, etc. in up-to-date City. Very good social advantages.

**WEST MIDLANDS.—(38)** First-rate Country Town. Old-established PRACTICE. Cash Receipts for the last 3 years averaged £2,014 about half being from very easily worked panel. Good house, well-situated, with ample accommodation. Excellent social, educational and sporting advantages. Premium 1½ years' purchase.

**LONDON (WEST-END).—(39)** PARTNERSHIP in high-class non-dispensing Practice in one of the best residential parts. No panel. Fees usually £1 1s.; some 10/6. No midwifery. Corner house in best position. Premium for share worth about £900, 2 years' purchase.

**EASTERN COUNTIES.—(40)** Cathedral City. Old-established PRACTICE about £1,400 p.a. Panel 1,750. Practically no midwifery or night work. House contains 4 bedrooms, etc. Premium £1,500.

**LANCASHIRE.—(41)** PRACTICE averaging £3,500 p.a. in manufacturing town. Panel over 2,000. Visits 3s. to £1 1s. Premium one years' purchase. Eminently suitable for two to buy together. Two houses available. Good Hospital.

**NORTH-WEST COAST.—(42)** Mixed-class PRACTICE about £2,000 in fashionable Seaside Resort. Appointments worth about £200. No Panel. Excellent double-fronted house (13 bedrooms) Prem. £3,000.

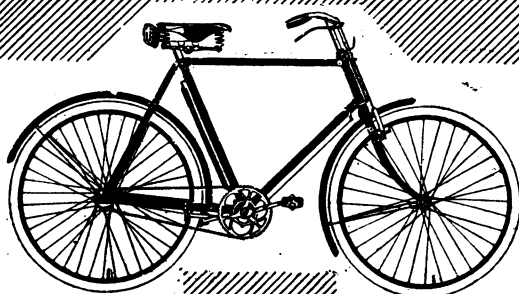
**BRISTOL CHANNEL.—(43)** Non-dispensing PRACTICE averaging £858 per annum in favourite Watering Place. No panel or midwifery. Cottage Hospital with chance of appointment on Staff. Good scope.

**SOUTH COAST.—(44)** Health Resort. PARTNERSHIP in well-established Practice of £3,300. Panel 2,000. Premium one-fourth share £1,250. Incoming Partner should be aged 27/30, unmarried, and with some experience in surgery.

**WEST MIDLANDS.—(45)** Unopposed Country PRACTICE nearly £1,400 p.a. Panel 1,300. House contains 5 bedrooms, etc. Nearly acre garden. Rent £37 on lease. Premium £2,000.

**SOUTH COAST.—(46)** Health Resort. Mixed-class PRACTICE. Receipts 1921 £2,243. Panel 1,400. Ten-roomed house. Premium £2,750, part by instalments.

### RESIDENT PATIENTS INTRODUCED.



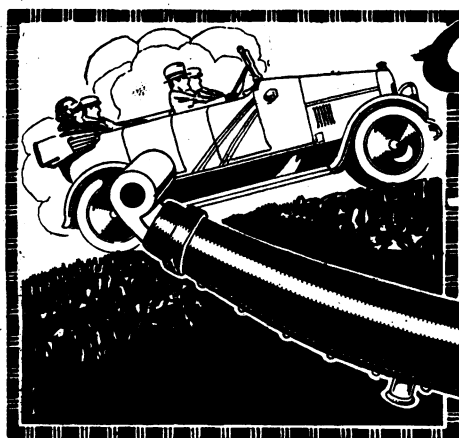
Use an  
**ARIEL**

for your messages. It's  
- quick and sure -

Prices from £10 10s. Carriage paid by  
goods train to nearest agent's station.

Catalogue free from

ARIEL WORKS, Ltd., 57, Pournbrook, BIRMINGHAM



**An Infallible Cure!!**

For **LEAF SPRING CONGESTION**  
**DUCO GREASE-BAITERS**

Obtainable from all  
Garages from 9.6  
each.

provide the constant means of lubrication which ensures the leaves of the spring being kept free from corrosion and rust, permitting and promoting freedom of movement, improved suspension and greater resiliency, and the elimination of spring breakage.

"DUCO" Brevet gratis and post free.

Wholesale only: **BROWN BROTHERS LTD.**  
(with which is amalgamated THOMSON & BROWN BROTHERS LTD.)  
GREAT EASTERN ST., LONDON, E.C. 2; and 14 & 15, UPPER MARYLEBONE  
ST., W. 1 (off Great Portland St., W.), and Branches.

## The "BARTON" SPHYGMOMANOMETER

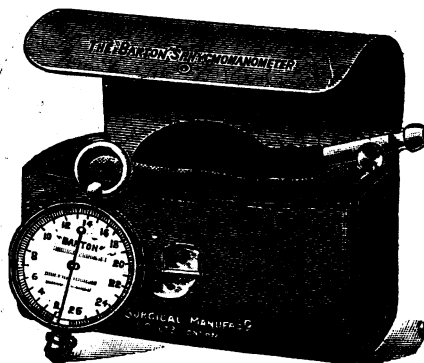
possesses the great advantage of being a very active and reliable instrument, extremely light and portable, and always ready for use, those absolute essentials for the apparatus of a busy Medical Practitioner.

Reduced Price ... **£3-3-0.**

**The Surgical Manufacturing Co., Ltd.,**

SURGICAL INSTRUMENT MAKERS to the WAR OFFICE, &c.

83-85, MORTIMER STREET, LONDON, W.1.



## A Valuable Aid for DOCTORS and their PATIENTS

The "ACOUSTIQUE" the NEW way to hearing, has successfully overcome disappointment and scepticism because it is *entirely different* from all else. Medical Men know cases vary greatly (even temperaments *base on the case*), so that deafness can only be successfully helped by **INDIVIDUAL TREATMENT**. This is the secret of success of the "ACOUSTIQUE," which is **INDIVIDUALLY FITTED** to the requirements of each case. Nerve cases can be fitted and an *Eminent Aural Surgeon* was recently impressed by the **NATURAL** results. Another one has recently *enlisted* the permanent services of the "ACOUSTIQUE" to complete the valuable assistance *afforded by him*. The "ACOUSTIQUE" is made in 24 types—one for **EVERY** case. An exclusive feature is the 'Non-Head Attachment': thus it is as inconspicuous for men as women, leaving the *hands free*, and the whole is the smallest, lightest, BEST, most natural and strongest (far reaching) aid ever made, combining portability with utility.


The "ACOUSTIQUE" has been supplied to *Regents*, and letters of testimony bear many most distinguished names including many Doctors. A special invitation is made to deaf members of the faculty, and all those interested in deaf cases. **NO FEE** is charged for interview and Mr. R. H. DENT (the Originator) will be pleased to make an appointment (for your convenience), by letter, wire, or 'phone, 1380 Mayfair. —To Aural Surgeons and Doctors: your prescriptions of individual cases correctly made up and patients fitted in your presence.

MAYFAIR 1380.  
MR. R. H. DENT'S  
**"ACOUSTIQUE"**  
FOR  
DEAF EARS  
95, Wigmore St., LONDON, W.1.  
(4 doors from Duke Street.)



# HEWLETT'S

## ORIGINAL PREPARATIONS



**"A VALUABLE AND CONVENIENT PREPARATION"**  
Lancet

**"THE SAME EFFICACY AS SANTAL OIL ITSELF"**  
Practitioner

**C. J. HEWLETT & SON** Ltd.  
35 to 42, Charlotte St.  
LONDON, E.C.