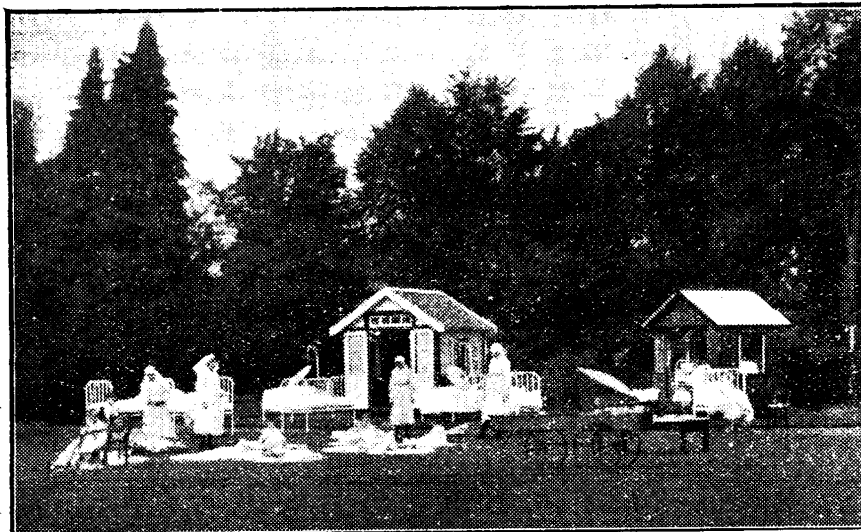


Royal National Orthopædic Hospital COUNTRY BRANCH

BROCKLEY HILL, STANMORE, MIDDLESEX.

Telephone:
Stanmore 30.

(12 Miles from Marble Arch, down Edgware Road towards Elstree).



**OPEN AIR
WARDS**

SUN CURE

Ideal situation, approximately 500 feet above sea-level, and all upon gravel soil.

Approved by Minister of Health for treatment of Surgical Tuberculosis.

(Patients contribute up to £2 2s. a week).

100 Beds already available.

For particulars apply Secretary, 234, Great Portland Street, London, W. 1.



OF PURE NASCENT FERROUS CARBONATE.



THAT Ferrous Carbonate must be administered in a nascent state has been proved beyond shadow of doubt, and this object is achieved by the use of bi-palatinoids—gelatin capsules divided into two compartments: one contains the alkaline carbonate and the other the iron sulphate. Not until the stomach is reached does the double reaction take place, thus nascent Ferrous carbonate is formed in the ideal condition for assimilation.

TEST-TUBE TRIAL: Place a Bi-Palatinoid of Pure Nascent Ferrous Carbonate in a little warm water in a test tube. Observe when a white precipitate occurs and then add sufficient HCL to make a 0.2 per cent. solution; notice that the whole of the precipitate goes into solution. If the precipitate be allowed to stand, it becomes green; it will then require a

much stronger acid solution to dissolve it. This fact clearly demonstrates that the nascent carbonate is more easily assimilated.

The Scientific Grants Committee of the British Medical Association instituted a research into the treatment of anæmia and chlorosis, under the supervision of a well-known physician. In his report the following appears: "So far as these observations go they show that carbonate of iron in the form of the bi-palatinoid or Bland Pills gave the best results compared with other preparations of iron containing an equivalent amount of the metal."

The LANCET says:—"The employment of Bi-palatinoids places the administration of exceedingly unstable compounds like ferrous carbonate, phosphate and arsenate upon a sounder and more scientific basis."

Clinical Sample and Literature on request from—

OPPENHEIMER, SON & CO., LIMITED,

179, QUEEN VICTORIA STREET, LONDON, E.C. 4.

