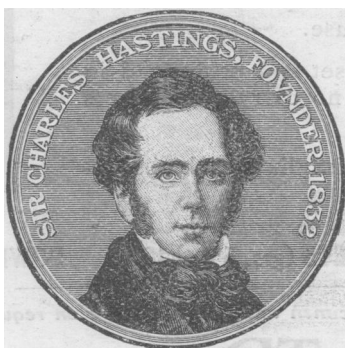


The

SUN 26 1929

# British Medical Journal

THE JOURNAL OF THE BRITISH MEDICAL ASSOCIATION.

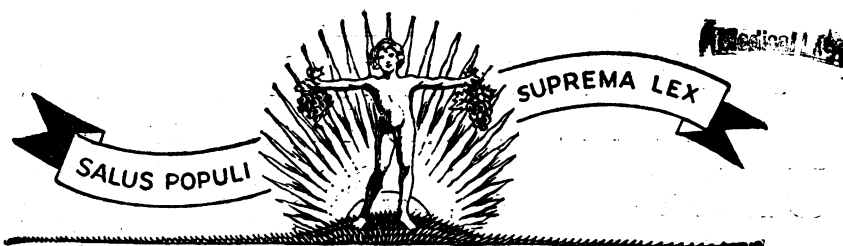


Including an Epitome of Current Medical Literature.  
WITH SUPPLEMENT.

No. 3571.

SATURDAY, JUNE 15, 1929.

Price 1/3



## CONCEALED CONSTIPATION

Half the constipation in the world is never recognized. So long as some measure of intestinal elimination occurs daily, it is commonly assumed that in this department of physiology all is well. Yet the degree of *concealed* constipation may be pronounced, and the large bowel may never be properly evacuated. A vicious circle is thus set up, and the intestinal musculature becomes diminishingly responsive and progressively atonic. The functional interrelation of the body's whole eliminatory chain is such that intestinal stagnation causes a general hold-up of the scavenging processes even in the remotest tissues. It is probably thus, rather than through direct absorption of toxins from the intestines, that most of the

unpleasant symptoms of constipation—headache, malaise, lassitude, etc.—are produced. It is surprising how promptly and completely these symptoms are cleared up by a regular morning glass of Eno's "Fruit Salt" taken before the early cup of tea.

As is generally known among medical men, Eno's "Fruit Salt" is a carefully blended combination of alkalies with fruit acids, and is absolutely free from such nauseating mineral purgative salts as the sulphates of soda and magnesia. It contains no sugar or added flavouring agents, its palatableness being due to its physical texture and the uniform solubility of its graded particles.

### "The Doctor's Emergency Reminder."

The Proprietors of Eno's "Fruit Salt" will deem it a privilege to send to any member of the Medical Profession a copy of the latest addition to their series of "Medical Reminders"—with or without a bottle of their preparation (Handy or Household size as required). "The Doctor's Emergency Reminder" summarises briefly a few points in connection with the treatment of poisoning and various other emergency cases. It is bound in black morocco limp to conform to the style of the previous publications in this series.

J. C. ENO LTD., 160, PICCADILLY, LONDON, W.1

ISSUED WEEKLY

[COPYRIGHT]

[REGISTERED AS A NEWSPAPER]

# The Standard Hypnotic

Clinical experience over a long period has demonstrated the remarkable value of

## 'Medinal' in Insomnia

arising from no matter what cause.

The soporific effect is rapid in onset and prolonged in action, and there are absolutely no carry-over effects to be feared.

The ready solubility of 'Medinal' implies quick absorption and rapid elimination.



**TABLETS** (grs. 5 and 7½).    **CACHETS** (grs. 5 and 10).    **POWDER.**    Dose: 5-10 grs. as required.

*Clinical specimen and full literature on request from—*

**SCHERING LTD., 3, Lloyd's Avenue, London, E.C.3**

*Or from the following Overseas Depots:*

<b>CANADA—</b> Schering (Canada) Ltd., P.O.B. 338 Montreal	<b>CEYLON—</b> General Trading Co., P.O.B. 316, Colombo.	<b>BRITISH INDIA—</b> Schering-Kahlbaum (India) Ltd., P.O.B. 2006 Calcutta.	<b>AUSTRALIA—</b> Willmott Frisk & Co., Ltd., Sydney.	<b>NEW ZEALAND—</b> F. & N. Suckling, Auckland.
<b>STRAITS SETTLEMENTS &amp; SIAM—</b> Handelmaatschappij v/h Barmer Export Gesellschaft, Singapore & Bangkok.		<b>DUTCH INDIES—</b> H. V. v/h W. Biedermann & Co., Batavia, Handelmaatschappij v/h Barmer Export Gesellschaft, Medan.		

## THE AUTO-CONDENSING THERMAL COUCH FOR THE PYRETIC TREATMENT OF RHEUMATISM AND ALLIED DISORDERS

Patent No. 248190.

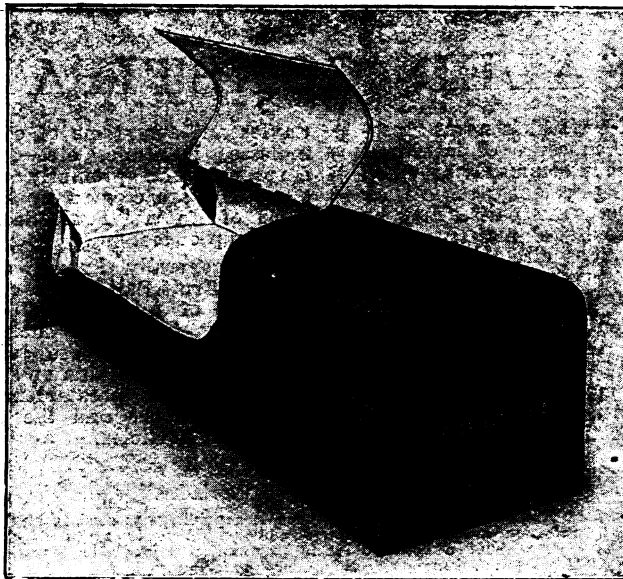
The most rational  
and successful  
method of treating  
these complaints.

### THREE MODELS

Upkeep Cost  
Nominal.

Heated by Gas  
or  
Electricity.

May be had on hire  
if desired.



Please write for booklet  
fully illustrating and de-  
scribing the essential  
principles of this remark-  
able apparatus; also  
copies of unsolicited testi-  
monials as to results  
obtained.

### RECOMMENDED:

"The Pyretic Treatment  
of Rheumatism and Allied  
Disorders" (1928)

By Percy Wilde, M.D.

Post free 4s. 6d.

(See many eulogistic Press  
notices.)

"Rheumatism: Its Nature  
and Cure"

By C. E. Sundell, M.D.,  
M.R.C.P.

98 pp. Post free 4s. 6d.

**THE COX-CAVENDISH ELECTRICAL CO. (1924) LTD.**  
105, Great Portland Street, London, W.1.

'Phone: LANGHAM 1145-6

London; William Robert Henderson, M.B., Royal Infirmary, Edinburgh; Donald Hunter, M.D., F.R.C.P., assistant physician, London Hospital; George Eric Lewis, B.A., M.R.C.S., London Hospital; Moses Myer Suzman, M.D., M.R.C.P., College of Medicine, Newcastle-upon-Tyne; Janet Maria Vaughan, B.A., B.M., University College Hospital, London. These Rockefeller medical fellowships are awarded to graduates who have had some training in research work either in the primary sciences of medicine or in clinical medicine and surgery, and who are likely to profit by a period of work at a chosen centre in America or, in special cases, in Europe, before taking up positions for higher teaching or research in the British Isles. Dr. Gough's fellowship is tenable at the University of Munich; the others at centres in the United States. Dr. Lewis has been appointed on modified conditions while receiving emoluments from another source.

On June 10th, at the Tower Bridge Police Court, a man charged with obtaining money by false pretences and with intent to defraud, pleaded guilty and was sentenced to imprisonment for three months in the second division. On behalf of the Pharmaceutical Society of Great Britain it was stated that the accused, having represented himself as a fully qualified chemist, obtained the post of manager to a chemist's shop. In substantiation of his claim he had produced a certificate under the Act which, though genuine, had been altered by the substitution of the accused's name for the one it bore originally. The accused, in the course of a statement, said that since he had managed the shop he had dispensed 50,000 prescriptions, and there had never been any trouble and everything had been in order.

THE ninth annual congress known as the Journées Médicales de Bruxelles will be held at Brussels from June 22nd to 26th, under the presidency of Professor Henry Coppez. Addresses will be delivered, among others, by Emile Sergent of Paris, Blum of Strasbourg, Nordenson of Upsala, Spillmann of Nancy, Putti of Bologna, Froment of Lyons, Eastman Sheehau of New York, Gouin of Lausanne, Hymans van den Bergh of Utrecht, and Tricot-Royer of Antwerp. The opening discourse will be given by the Parisian oto-rhino-laryngologist, Dr. Nepveu, who is well known in the literary world, as Luc Durtain. The subscription is 75 francs. Further information can be obtained from the general secretary, Dr. R. Beckers, 62, Rue Froissart, Brussels.

DR. G. WAYLAND ANCRUM of Gloucester and Dr. Richard Davies of Cheltenham have been appointed to the Commission of the Peace for the county of Gloucester.

## Letters, Notes, and Answers.

All communications in regard to editorial business should be addressed to **THE EDITOR, British Medical Journal, British Medical Association House, Tavistock Square, W.C.1.**

ORIGINAL ARTICLES and LETTERS forwarded for publication are understood to be offered to the *British Medical Journal* alone unless the contrary be stated. Correspondents who wish notice to be taken of their communications should authenticate them with their names, not necessarily for publication.

Authors desiring REPRINTS of their articles published in the *British Medical Journal* must communicate with the Financial Secretary and Business Manager, British Medical Association House, Tavistock Square, W.C.1, on receipt of proofs.

All communications with reference to ADVERTISEMENTS, as well as orders for copies of the *Journal*, should be addressed to the Financial Secretary and Business Manager.

THE TELEPHONE NUMBERS of the British Medical Association and the *British Medical Journal* are MUSEUM 9361, 9362, 9363, and 9364 (internal exchange, four lines).

THE GRAPHIC ADDRESSES are:  
EDITOR of the *British Medical Journal*, Aitiology Westcent, London.

FINANCIAL SECRETARY AND BUSINESS MANAGER (Advertisements, etc.), Articulate Westcent, London.  
MEDICAL SECRETARY, Medisecra Westcent, London.

The address of the Irish Office of the British Medical Association is 16, South Frederick Street, Dublin (telegrams: *Bacillus, Dublin*; telephone: 62550 Dublin), and of the Scottish Office, 7, Drumshough Gardens, Edinburgh (telegrams: *Associate, Edinburgh*; telephone 24361 Edinburgh).

### QUERIES AND ANSWERS.

#### UMBILICAL DISCHARGE.

"W. D." writes: Can anyone suggest the cause of an occasional discharge from the umbilicus in a woman of 32? The discharge is serous in character, and occurred first at about the age of 14 years, and reappeared about three years ago.

### WATER SOFTENERS.

"MEMBER OF FORTY YEARS' STANDING" asks whether it is advisable to use for the whole of the water supply (Kentish hard water) to his house one of the water softeners on the market. Is the softened water palatable, and does it contain any substance injurious to health? Is any one method of softening specially recommended?

### INCOME TAX.

#### Appointment: Whether Liable to Tax.

"W. H. P." first commenced earning a salary in September, 1926, as an assistant, and his earnings have been as follows:

September, 1926, to December, 1926	£69
Year to December, 1927	£231
Year to December, 1928	£290
Three months to April, 1929	£109

He inquires whether he is liable to assessment, and as to what steps he should take.

\* \* He is liable as follows:

For the year 1926-27: £69+one-quarter of £231—that is, £127—exempt.

For the year 1927-28: three-quarters of £231+one-quarter of £290—that is, £245—£6 18s. tax.

For the year 1928-29: three-quarters of £231+one-quarter of £290—that is, £245—£6 18s. tax.

In explanation of the above the basis of assessment was the current year's earnings up to 1927-28 inclusive, and afterwards the previous year's earnings; in calculating the tax payable only earned income relief and the £135 personal allowance have been deducted; any life assurance relief would reduce the tax payable still further. It will probably be best for "W. H. P." to get in touch with the local inspector of taxes and make his formal returns.

#### Change of Employment.

"R. C. F. S." was acting as a general assistant to December 20th, 1927, and became a school medical officer under a public authority as from January 1st, 1928. What is his correct basis of assessment for the year to April 5th, 1928?

\* \* The actual amount of his earnings for that year. Where a substantial change in the nature and conditions of the employment takes place, as has occurred here, the correct method is to regard the former employment as having ceased and a new one as having commenced. The facts do not justify a claim to continuity of employment.

### LETTERS, NOTES, ETC.

#### THE COCKTAIL HABIT IN FRANCE.

IN our issue of January 5th (p. 31) we noted Professor W. E. Dixon's warning about the injurious effects of cocktail addiction; recently a similar denunciation has been made at the Académie de Médecine by Professor Georges Guillaumin, who occupies the chair of nervous diseases in the Paris Faculty of Medicine. Before the war, he states, this practice, imported from America, had been confined to certain sections of French society, particularly racing, literary, and dramatic circles, but lately it has become prevalent among the well-to-do classes generally. The cocktail bar is to be found not only in hotels and restaurants, but even in the homes of the rich. Furnishing firms make it their business to supply more or less elegant bars suitable for drawing rooms, even for motor cars, while special hampers containing the ingredients and utensils used in the preparation of cocktails are on sale everywhere. As in this country, the principal victims of the habit are young men and women of the "smart" set, and among them Professor Guillaumin has often found obvious signs of chronic alcoholism. Commonly met with are digestive disturbances, manifested as loss of appetite, hyperchlorhydria, pyloric spasm, congestion of the liver, and enteritis, and such circulatory symptoms as tachycardia, precordial pain, and a tendency to syncope. The most important disorders, however, are referable to the nervous system, and include insomnia, physical and psychical asthenia, depression, and disinclination for mental work. In several instances epileptic attacks, attributed to the cocktail habit, have occurred for the first time in individuals of 25 to 35 years of age. Professor Guillaumin urges that young people of the wealthy classes should be enlightened as to the disastrous effects of cocktail drinking, both on their own physical and mental equilibrium and on that of their descendants.

#### VOTES FOR EPSOM COLLEGE.

DR. BERNARD ROWLANDS (London, N.15) writes: I appeal on behalf of John Horace Brockman White to any who have votes for Epsom College. Contemporaries of his father, Charles Powell White, M.A., M.D.Camb., F.R.C.S.Eng., who knew him as a good surgeon and research worker, will regret to know that this appeal is necessary.

### VACANCIES.

NOTIFICATIONS of offices vacant in universities, medical colleges, and of vacant resident and other appointments at hospitals, will be found at pages 41, 42, 43, 47, 48, 49, and 50 of our advertisement columns, and advertisements as to partnerships, assistantships, and locumtenencies at pages 44, 45 and 46.

A short summary of vacant posts notified in the advertisement columns appears in the *Supplement* at page 235.



THE injurious action of caffeine, to which the ailing, convalescents and those in good health become liable by the habitual or excessive consumption of coffee and tea, is causing an increased interest in the medical world. There is already a comprehensive literature dealing with this subject; in many cases it absolutely bans the consumption of beverages containing caffeine.

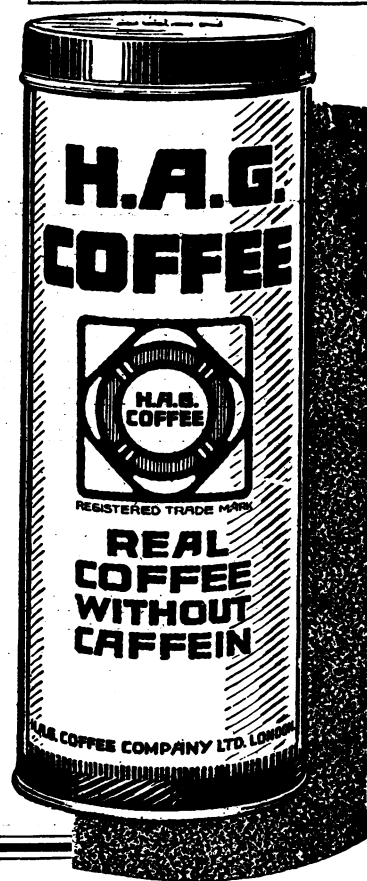
THE physician who is solicitous with regard to the welfare and ailments of his patients will specially value the knowledge that **H.A.G. COFFEE**—a caffeine-free berry coffee—is obtainable, which in respect to aroma and palatableness, affords the same sense of enjoyment as ordinary coffee containing caffeine, but without its harmful action on the cardiac, the nervous, and the vascular system.

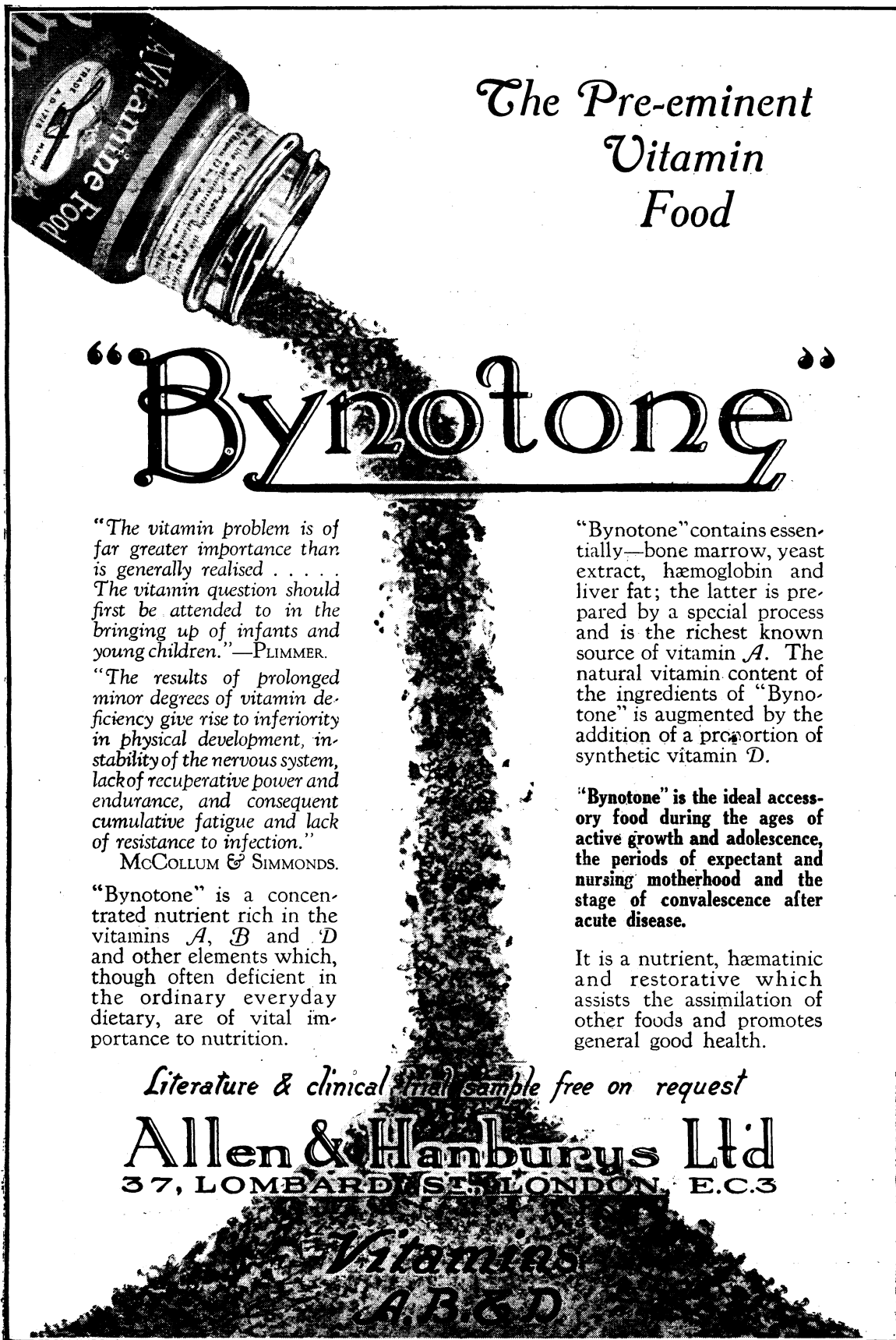
WITH **H.A.G. COFFEE** the caffeine is extracted from the unroasted coffee bean by a patented process, until only a slight, non-effective trace remains. Previous to this treatment, the coffee beans undergo a most thorough cleansing.

CAFFEIN-free **H.A.G. COFFEE** can confidently be recommended as the best and most valuable health coffee, and, in order to give members of the Medical Profession an opportunity of personally appreciating the hygienic characteristics of **H.A.G. COFFEE**, we shall be pleased to send a sample and literature free on request.

**H.A.G. COFFEE CO. LTD.**  
40 Theobald's Road, London, W.C.1

*H.A.G. Coffee can be obtained in 2 sizes, price 3/2 and 1/8, either ground or in the bean. If your grocer has no stock we will supply post free upon receipt of your remittance*





The Pre-eminent  
Vitamin  
Food

“Bynotone”

“The vitamin problem is of far greater importance than is generally realised . . . . . The vitamin question should first be attended to in the bringing up of infants and young children.”—PLIMMER.

“The results of prolonged minor degrees of vitamin deficiency give rise to inferiority in physical development, instability of the nervous system, lack of recuperative power and endurance, and consequent cumulative fatigue and lack of resistance to infection.”  
McCOLLUM & SIMMONDS.

“Bynotone” is a concentrated nutrient rich in the vitamins *A*, *B* and *D* and other elements which, though often deficient in the ordinary everyday dietary, are of vital importance to nutrition.

“Bynotone” contains essentially—bone marrow, yeast extract, hæmoglobin and liver fat; the latter is prepared by a special process and is the richest known source of vitamin *A*. The natural vitamin content of the ingredients of “Bynotone” is augmented by the addition of a proportion of synthetic vitamin *D*.

“Bynotone” is the ideal accessory food during the ages of active growth and adolescence, the periods of expectant and nursing motherhood and the stage of convalescence after acute disease.

It is a nutrient, hæmatinic and restorative which assists the assimilation of other foods and promotes general good health.

*Literature & clinical trial sample free on request*

**Allen & Hanburys Ltd**  
37, LOMBARD ST., LONDON, E.C.3

*Vitamins  
A, B & D*