

# TAMPOVAGAN

## The Modern Treatment

### FOR THE

# LEUCORRHOEAS.

Tampovagan P.S.S. (Penicillin, Sulphanilamide and Sulphathiazole) rapidly eliminates pathogenic organisms and renders conditions in the vagina unsuitable for the propagation of *Trichomonas* and *Monilias*.

Tampovagan with Ichthyol 5% and 10% has been used with great success after vaginal floor repairs or where irritation or damage has been caused by pessaries or other foreign bodies.

#### *The full Tampovagan range includes:-*

Tampovagan with Lactic Acid 5%

Tampovagan with Ichthyol 5% and 10%

Tampovagan with Choleval 1%

Tampovagan with Penicillin (5,000 i.u. and 100,000 i.u.)

Tampovagan with P.S.S. (Penicillin, Sulphanilamide and Sulphathiazole)

Tampovagan with Stilboestrol and Sulphathiazole

*Literature and samples from*

CAMDEN CHEMICAL COMPANY LTD.

61 GRAY'S INN ROAD, W.C.1.

From single-cell selection  
to large-scale production

## D.C.L. VITAMIN B<sub>1</sub> YEAST

is subjected to the strictest biological and chemical control. The special yeast contains approximately:

Vitamin B<sub>1</sub> 300 International Units per gram.  
(900 micrograms)

Riboflavin 50 micrograms per gram.

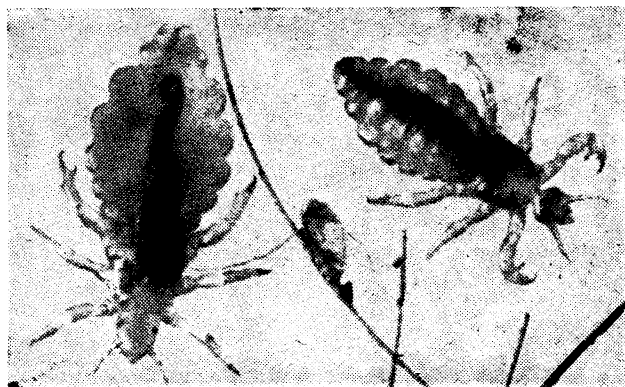
Nicotinic Acid 250-350 micrograms per gram.

Vitamin B<sub>6</sub> 25-50 micrograms per gram.  
(Pyridoxin)  
(3 D.C.L. Tablets equal 1 gram)

Members of the Medical Profession are invited to write for full particulars and a trial supply.

THE DISTILLERS COMPANY LTD., EDINBURGH

## A Matter of Minutes...



**T**HE common head louse, *Pediculus humanus capitis*, has proved completely vulnerable to SULEO HAIR EMULSION. One treatment with SULEO will clear the most heavily infested head in a matter of minutes. Formulated with D.D.T. plus Pyrethrum SULEO acts instantly and remains toxic for at least fourteen days, thus exceeding incubation period of nits by some days. An outstanding advantage is that the hair may be washed during this period without lessening the lethal effect.

SAFE TO USE—HARMLESS TO HAIR & SCALP—EASILY APPLIED—PLEASANTLY PERFUMED—UNDETECTABLE.

*Used by Medical Officers throughout the United Kingdom.*

## SULEO HAIR EMULSION

*Doctors are invited to write for Sample and Literature from*

JEVES' LABORATORIES LTD. MILLBROOK · CHIGWELL · ESSEX

*To all who are interested  
in Iodine—its effects,  
its uses, its possibilities—the  
Chilean Iodine Educational Bureau  
offers information and advice.  
Reviews of selected aspects of  
Iodine usage are available, including:*

ELEMENT NO. FIFTY-THREE  
TREATMENT OF INFLUENZA AND THE COMMON COLD  
CONTRAST MEDIA FOR RADIOGRAPHY  
WORLD GOITRE SURVEY

*Every endeavour will be made to meet your  
requests for information. There is no charge*



**Chilean Iodine Educational Bureau**

19, STONE HOUSE, BISHOPSGATE, LONDON, E.C.2