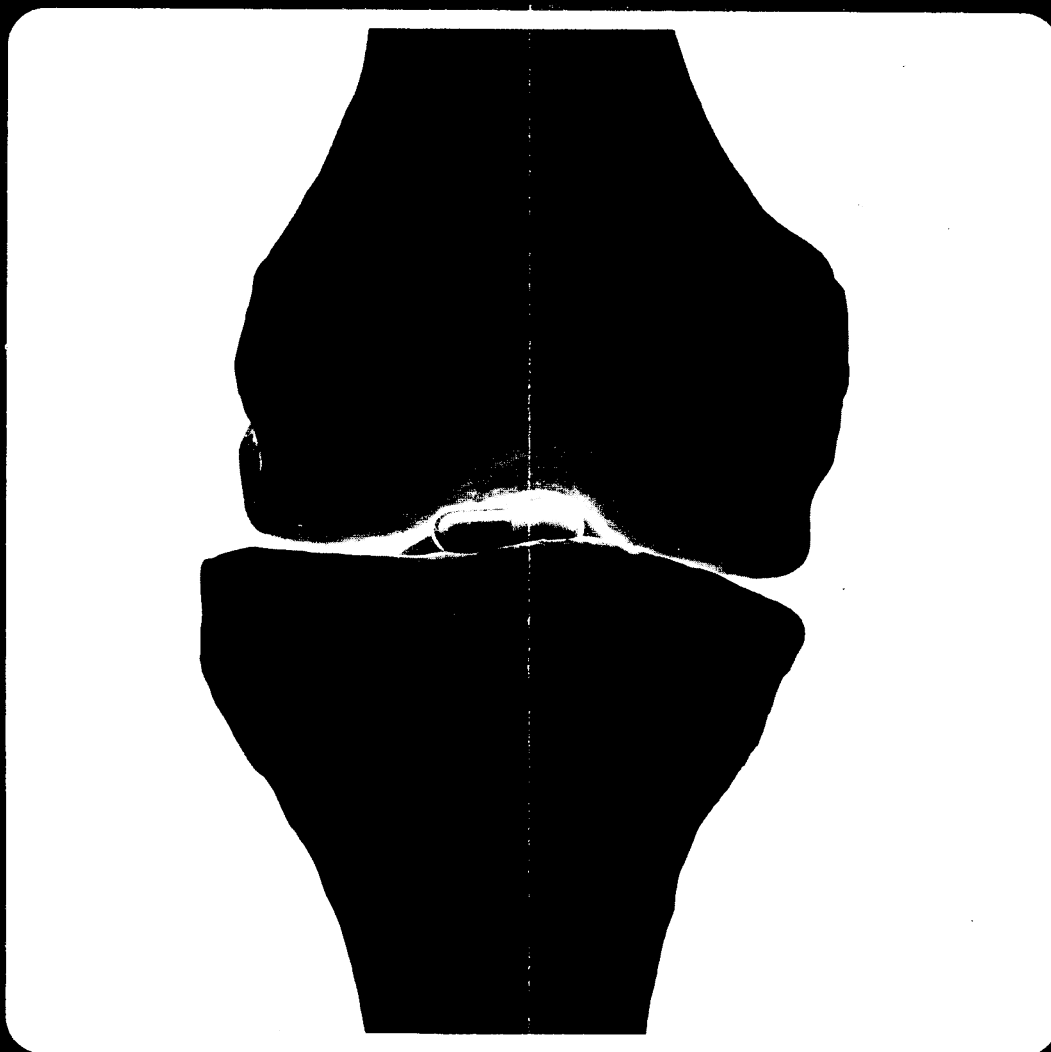


MA4582



**Stops the pain  
that stops the  
patient moving  
in osteoarthritis**

**Relieves pain** <sup>1,2,3,4,6</sup>

**Reduces stiffness** <sup>1,5</sup>

**Improves tolerance of movement** <sup>1,4</sup>

**No serious toxic effects in long-term use** <sup>7,8</sup>

**References**

- 1 *Br. Med. J.*, iv., 398, 1972
- 2 *Ann. Rheum. Dis.*, 32, 62, 1973
- 3 *Practitioner*, 213, 519, 1974
- 4 *Rheumatol. Rehabil.*, 13, 125, 1974
- 5 *Ibid.*, 13, 10, 1974
- 6 *S. Afr. Med. J.*, 48, 1526, 1974
- 7 Peltola, P., Paper Presented at the XIIIth International Congress of Rheumatology, Kyoto, Japan, October 1973
- 8 Gomez, G., (Long-term study) Personal Communication on file

**Orudis** right from the start  
in rheumatoid arthritis and osteoarthritis

Full prescribing information is available on request

'Orudis' is a trade mark of May & Baker Ltd Dagenham Essex RM10 7XS  
for its preparations of ketoprofen.



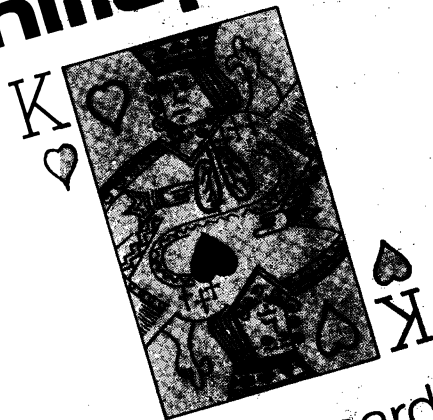
**M&B May & Baker**



A member of the Rhône-Poulenc  
Group of Companies

# millophyline

(Eamphyline Camylate)



Respiratory and cardiac  
stimulant Bronchodilator

Distributor in the United Kingdom  
FARILLON LIMITED  
Chesham House, Chesham Close,  
Rimford, RM1 4JX tel: Rimford 46033

Full product information available upon request

**dales pharmaceuticals limited**

Barrows Lane, Steeton, Keighley, Yorkshire, BD20 6PP (Steeton 53222)



## The security of a trained nurse is as close to you as your telephone.

The British Nursing Association is the largest nursing agency in the U.K.

We can supply a trained B.N.A. nurse. Any time. Anywhere. Day or Night. 7 days a week. On a full-time basis. Or for as little as one hour.

You tell us what you need and when you need it. We do the rest.

All B.N.A. nurses are carefully selected and fully trained. With specialists for any nursing need.

The cost can be surprisingly low. But the quality is always high.

Whether you need us now, or in the future. We'll be waiting at the end of the 'phone.

Why not call or write for details.



**BNA**  
British Nursing  
Association, 470,  
Oxford Street,  
London, W1N 0HQ.  
Tel: 01-409 1921  
or see our local  
address in  
Yellow Pages.

## PUVA

*is now available  
for private patients at*

**PSORIASIS UVA (Medical Referrals Only) Ltd.,**

2 HARMONT HOUSE,

20 HARLEY STREET, London W.1.

Telephone 01-580 0875

*For details please contact  
the Physician-in-Charge.*

**MONT-DORE**

**ASTHMA**

**BRONCHITIS**

**HAY-FEVER**

**SINUSITIS**

And all respiratory troubles due to allergic aggressions and stress of modern life (air pollution, heavy smoking, etc.). MONT-DORE provides powerful thermal waters, a health restoring climate in the mountains, open air life (Golf course) and complete rest for tired men and women.

For further information write to: Etablissement Thermal Le Mont-Dore: 63240. Tel: 21 05 10.

or in Paris:

PROMOTHERMES: 67, Bld Malesherbes—75008. Paris.  
Tel: 522 64 14 and 522 07 28. (FRANCE).

## COUNTY NURSING HOME & CLINIC BEDFORD

**Private nursing with every care and  
comfort, at competitive rates**

Single or twin-bedded rooms with  
private bathrooms; comfortable lounges  
and dining room.

24-hour medical care by fully qualified  
staff to the specified standards of the  
Area Health Authority.

First-class treatment for  
post-operative, acute and chronic  
medical, orthopaedic, gynaecology and  
terminal care patients.

Consultants' and doctors' rooms and  
facilities, for surgical, medical and  
psychiatric consultations. Group  
therapy and rehabilitation courses can  
be arranged.

Special rates arranged for longer-term  
patients.

*For colour brochure and full details, or to see  
the facilities available, contact:*

The Matron, Mrs. E. Cochrane,  
County Nursing Home & Clinic, Duckmill Lane,  
Bedford MK42 0AR Tel: Bedford (0234) 64430/6

**Recognised by BUPA & PPP schemes**

# For a beast of a cough



## ACTIFED COMPOUND LINCTUS

### The cough-stopper for adults and children alike

Actifed\* Compound Linctus contains triprolidine hydrochloride, pseudoephedrine hydrochloride, and codeine phosphate in a palatable fruit-flavoured syrup.

\*Trade Mark

Full prescribing information is available on request.  
Wellcome Medical Division  
The Wellcome Foundation Ltd.  
Berkhamsted, Herts



**Wellcome**

# Prothiaden

## What's the significance of the new 75mg tablet?

**Presentation** Prothiaden is dothiepin hydrochloride, an antidepressant of the tricyclic group.

Prothiaden is available as sugar-coated tablets, each containing 75mg of dothiepin hydrochloride. The tablets are red in colour and bear the overprint 'P 75' in white. It is also available in hard gelatin capsules, each containing 25mg of dothiepin hydrochloride. The capsules are red/brown in colour with the overprint 'P25' in white.

**Uses** Prothiaden is indicated in the treatment of depression and the anxiety frequently associated with depressive illness.

**Dosage and Administration** Prothiaden should be given in a dosage of 75 to 150mg daily. The following dosage schemes are suggested:

Mild to moderate depression, 25mg three times daily or 75mg at night.  
Moderate to severe depression, 150mg daily in divided doses, or as a single dose at night. (If the latter regimen is adopted, it is preferable to use a smaller dose for the first few days).

In certain circumstances, i.e. in hospital use, Prothiaden has been given at dosages up to 225mg daily. No dietary restrictions are necessary during treatment with Prothiaden.

**Contra-indications, Warnings, etc.** Prothiaden has anticholinergic properties; therefore, it may precipitate urinary retention in susceptible individuals and its use should be avoided in patients with existing or potential urinary retention. Patients with closed-angle glaucoma should not be given Prothiaden and the occurrence of a painful red eye in a patient receiving the drug may indicate acute closed-angle glaucoma; this requires urgent treatment. In patients with chronic simple glaucoma, the risk of Prothiaden causing a rise in intraocular pressure is relatively small provided adequate anti-glaucoma therapy is being used. Caution is advised when treating epileptic patients and those with cardiovascular disorders. From studies in animals, it was concluded that Prothiaden had no teratogenic effects in the species tested. Nevertheless, as with any relatively new drug, the use of Prothiaden during pregnancy should be avoided if possible.

**Use with other drugs:** Prothiaden should not be given concurrently with MAO inhibitors; nor should it be given within 14 days of ceasing treatment with an MAO inhibitor. Prothiaden may alter the pharmacological effects of some concurrently administered drugs: CNS depressants, including alcohol and narcotic analgesics, will be potentiated, as will the effects of adrenaline and noradrenaline (it should be borne in mind that some local anaesthetic preparations contain these sympathomimetics). The hypotensive effect of certain antihypertensive agents (e.g. bethanidine, debrisoquine, guanethidine) may be reduced.

**Side-effects:** Generally, the side-effects associated with Prothiaden have been mild and controlled by reduced dosage. The following have been reported—dryness of mouth, constipation, disturbed accommodation, lassitude, dizziness, orthostatic hypotension, palpitations, somnolence, tremor, headache.

**Overdosage:** The symptoms of overdosage with Prothiaden may include sedation, dry mouth, blurring of vision, tachycardia, tremor, sweating, nausea, vomiting, confusion. The main dangers from overdosage arise from unconsciousness, convulsions, abnormal cardiac rhythms, hypotension and depression of respiration. The smallest dose of Prothiaden alone which resulted in the death of an adult was reported to be 0.75–1.0g (30 to 40 x 25mg capsules). The largest dose from which recovery took place was reported to be 5.0g (200 x 25mg capsules). In view of the many factors which influence the outcome of an overdose, these figures should not be considered in isolation.

**Treatment of overdosage:** Gastric lavage, in the unconscious patient or where the cough reflex is depressed, the lungs should be protected by a cuffed endotracheal tube. Repeated gastric/intestinal aspiration may remove drug and metabolites excreted into the gut via the bile. General support of the circulation with continuous ECG monitoring is advised. Abnormalities of cardiac rhythm and epileptic convulsions may occur and should be treated accordingly. Forced diuresis and haemodialysis are not recommended. Bed-rest is advisable, even after clinical recovery.

**Pharmaceutical Precautions—Recommended storage conditions** 5°C to 20°C.

**Legal Category** POM.

**Package Quantities—Prothiaden Tablets (75mg)** 100, 500. **Prothiaden Capsules (25mg)** 100, 600.

**Basic NHS Prices:** 100 x 25mg £1.57    600 x 25mg £9.03  
100 x 75mg £4.52    500 x 75mg £21.70

**Product Licence Number** Prothiaden capsules PL 0096/5007. Prothiaden Tablets PL 0096/0046.

The Crookes Laboratories Ltd., Basingstoke, Hants.

**References:** 1. Pearce, J. B. & Linford Rees, W. J., *Int. Med. Res.* 1974, **2**, 12.  
2. Rees, J. A. & Cryer, P. C. *Curr. Med. Res. Opin.* 1976, **4**, 416.

# Prothiaden 75mg

more effective, better tolerated  
treatment for depression and anxiety.

... dothiepin in a single daily dose is better tolerated and produces a greater overall response than a divided dose regimen of amitriptyline.

2

... with dothiepin both the incidence and severity of side-effects were much less than with amitriptyline.

2

... A single daily dose of dothiepin (Prothiaden) has been shown to produce a better clinical response and to be better tolerated than a divided daily dose regimen. 1



## The powerful one

Because DF 118 is a powerful analgesic it works well in small doses, leaves your patient alert and allows him to go about his everyday tasks normally, without the need for follow-ups until a repeat is necessary.

Transfer a chronic patient to DF 118 and notice how dramatically you reduce his analgesic intake. The effective dose, once established, will remain steady and any concomitant therapy is simpler for him to control.

Acute patients, too, benefit from DF 118 since the fully active oral route lessens the need for injections. For patients who cannot swallow tablets Elixir DF 118 offers an alternative form with greater flexibility of dosage.

Low dosage leads to low cost and the basic cost of 28 tablets (an average week's supply) is only 37 1/2p.



Each DF 118 tablet contains Dihydrocodeine tartrate BP 30mg.



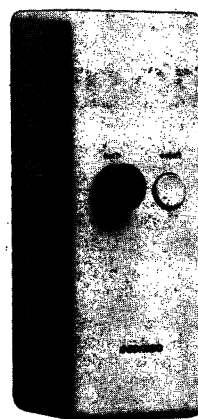
Each 5ml Elixir DF 118 contains Dihydrocodeine tartrate BP 10mg.

**DF 118 subdues the pain,  
but not the patient.**



Full information is available from  
**DUNCAN, FLOCKHART & CO. LTD., LONDON E2 6LA.**

## Save money. Wash your hands here.



This is a Redring Instant Water Heater—probably the easiest, most economical way of providing instant hot water.

Anywhere. Before or after any job—at the touch of a button.

The compact unit heats just as much water as you need, as you need it, instantly. Direct from the cold water mains supply.

And no tank to reheat afterwards.

So, if you want a convenient, on the spot, money saving way of washing hands in school, surgery, factory, cafe—or anywhere else—you need the Redring Instant Water Heater.

Redring Instant Water Heater.  
For the work you do.

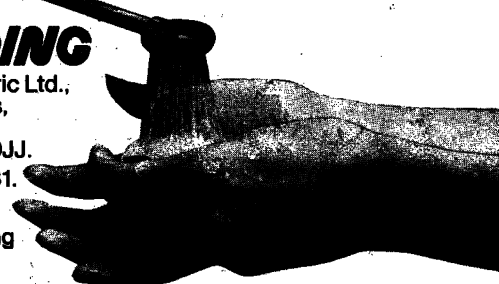
### REDRING

Redring Electric Ltd.,  
Redring Works,  
Peterborough,  
England PE2 9JJ.

Tel: 0733 60431.

Telex 32230.

Grams: Redring  
Peterborough.



## BONE AND JOINT DISEASES

Arthritis used to be the Cinderella of diseases, but improved diagnostic techniques, advances in joint replacement surgery, and a whole range of non-steroidal drugs have led to a much more active approach to the management of the common bone and joint diseases. Detailed advice on their diagnosis and treatment was given last year in a series of 16 articles in the *BMJ*, and these have now been gathered together in the latest volume based on the popular "Today's Treatment" series.

*Demy Octavo*

*Paperback*

*131 pages*

ISBN 0 7279 0026 9

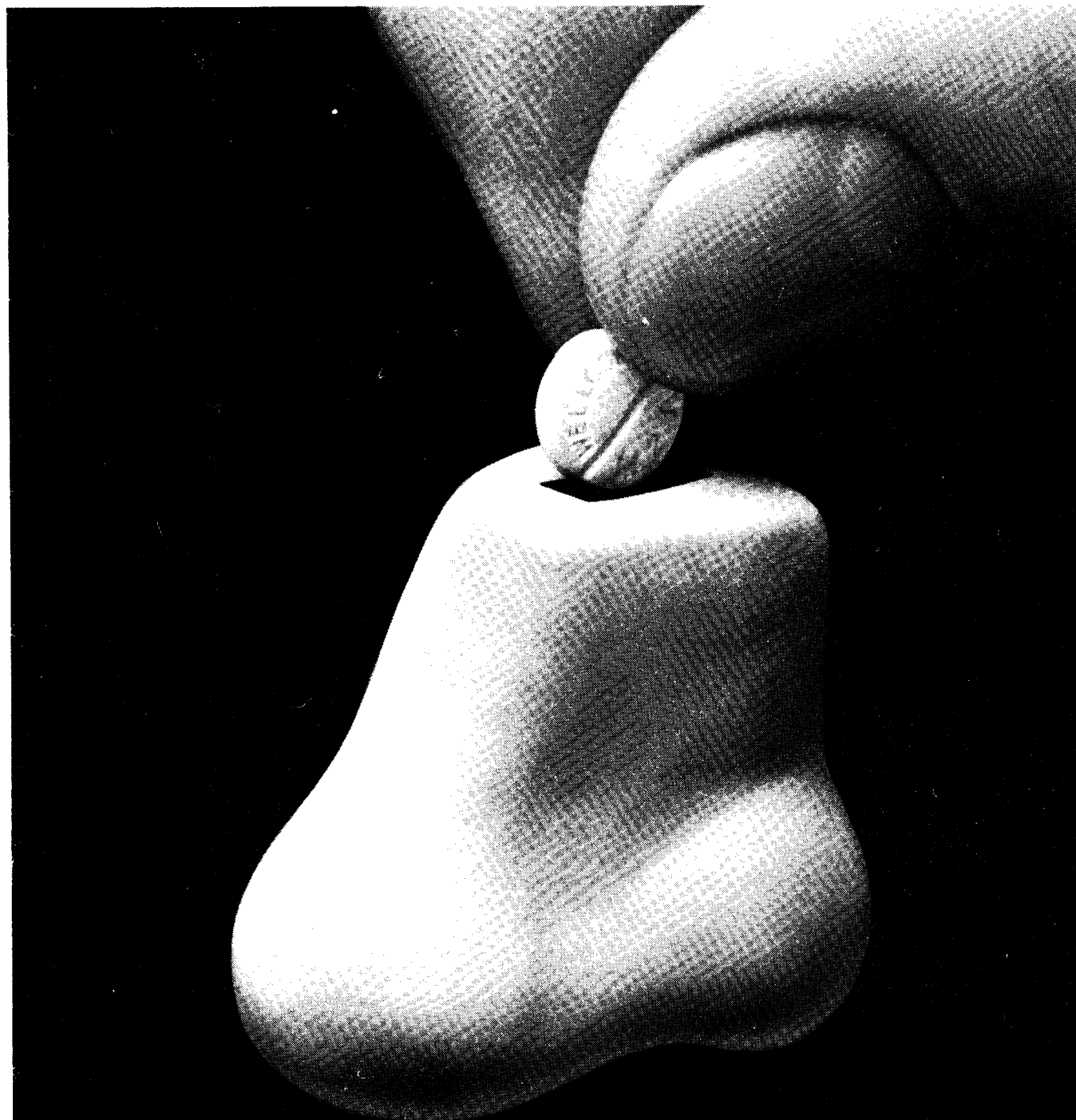
**Price: Inland £3.00; Abroad US \$6.00,  
including postage**

Payment must be enclosed with order or a surcharge of 30p will be made for rendering invoices and statements

*Order your copy now from*

The Publisher, BRITISH MEDICAL JOURNAL,  
BMA House, Tavistock Square, London WC1H 9JR  
or through any leading bookseller

# Save a blocked-up nose today



# ACTIFED TABLETS

TRADE MARK

Actifed Tablets contain  
pseudoephedrine and triprolidine.  
Also available in syrup form.



Full prescribing information is available on request.  
Wellcome Medical Division  
The Wellcome Foundation Ltd., Berkhamsted, Herts



# Remembering Henry

Edited by Stephen Lock and Heather Windle

"That the book is worth while is confirmed because so many people of distinction in such varied occupations wished to contribute; he comes through as one of the great characters of mid-twentieth century medicine, but his solid contributions to medicine and the other elements of his career are brought out as well. The readers will enjoy **Remembering Henry**."

Noble, John S., *British Medical Journal*, 1977, 2, 886

"... even readers unlucky enough not to have known Henry Miller or felt his vibrations will gain much from this splendid book. The BMA has produced nothing like it before. I bet they never will again."

Dixon, Bernard, *World Medicine*, 1977, 13, 25

"Anyone who knew or worked with Henry Miller will find the £3 asked for this lament well spent. But so will many others, if only for the enjoyment of attempting to determine from all the clues whether the late vice-chancellor was a self-indulgent, egotistical clown, or a courageous, great-hearted, witty champion of the truth, or a rumbustious and never-to-be repeated conglomerate of all these things and more."

Gould, Donald, *New Scientist*, 1977, 76, 236

Demy Octavo  
Paperback  
166 pages

ISBN 0 7279 0027 7

Price: Inland £3.00; Overseas US\$7.50, including postage  
(Members of the BMA may purchase this book at the special price of:  
Inland £2.50; Overseas US\$6.25)

## ORDER YOUR COPY NOW

From: The Publisher, BRITISH MEDICAL JOURNAL,  
BMA House, Tavistock Square, London WC1H 9JR

# BMA Specialist Journals on MICROFICHE

BMA Specialist Journals are published in a microfiche edition simultaneously with the standard paper editions. Overseas subscribers to the microfiche editions will receive microfiches, by AIR MAIL, within days of publication. The availability of the microfiche editions should have great appeal to libraries and other readers far distant from the United Kingdom.

The microfiches produced for the British Medical Association conform to the international standard as laid down by the National Microfilm Association of America. These microfiches are produced by a step and repeat camera with duplicates produced on silver halide film for archival permanence. Each fiche measures 105 mm x 148 mm and can contain up to 98 images filmed at a reduction ratio of 24x along with an eye readable title for identification. Details of microfiche volume binders are available on request.

The subscription prices for each annual volume on microfiche are as follows:

	Rate for Paper Edition Subscribers	Rate for those NOT subscribing to Paper Edition
	Inland (Abroad)	Inland (Abroad)
<b>Published Monthly</b>		
Archives of Disease in Childhood	£13.50 (U.S. \$27.00)	£20.25 (U.S. \$40.50)
British Heart Journal		
British Journal of Ophthalmology		
Gut		
Journal of Neurology, Neurosurgery and Psychiatry		
*Cardiovascular Research	£14.50 (U.S. \$29.00)	£21.75 (U.S. \$43.50)
Journal of Clinical Pathology		
<b>Published Six Times a Year</b>		
Annals of the Rheumatic Diseases	£10.00 (U.S. \$20.00)	£15.00 (U.S. \$30.00)
British Journal of Venereal Diseases		
Journal of Medical Genetics		
*Thorax	£12.00 (U.S. \$24.00)	£18.00 (U.S. \$36.00)
<b>Published Quarterly</b>		
British Journal of Industrial Medicine	£6.50 (U.S. \$13.00)	£9.75 (U.S. \$19.50)
Journal of Epidemiology and Community Medicine		
*2 fiches required for each issue		

The volumes published in 1975, 1976 and 1977 are also available on microfiche at these rates.

Orders for the microfiche editions of the BMA Specialist Journals can be sent to:

The Publisher, BMA House, Tavistock Square, London WC1H 9JR.  
Readers in the USA can order from: BRITISH MEDICAL JOURNAL,  
1172 Commonwealth Avenue, Boston, Mass. 02134 or through any  
leading subscription agent.

## TENORMIN PRESCRIBING NOTES

### Uses

Management of hypertension, including hypertension of renal origin.

### Dosage

Most patients respond to 100mg daily. The dose may be increased if necessary to 200mg daily after one or two weeks.

### Side Effects

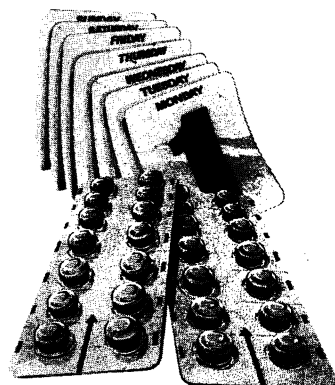
Pharmacological—cold extremities, muscular fatigue, bradycardia.

### Contraindications

Second and third degree heart block.

### Precautions

Tenormin is  $\beta_1$  selective and can be used in patients with obstructive airways disease. An increase in airways resistance may be provoked in some asthmatic patients which can be reversed by the use of bronchodilator preparations. It should not be used in patients with untreated cardiac failure. Caution should be observed in the following: Bradycardia (below 55 beats per minute), renal failure, anaesthesia and pregnancy. In these cases refer to the Data Sheet.



Full prescribing information is available on request from



STUART

Stuart Pharmaceuticals Ltd,  
Carr House, Carrs Road,  
Cheadle,  
Cheshire SK8 2EG.



# Daily Tenormin



## DATELINE FOR NEW CALENDAR PACKS

'Tenormin', the once daily antihypertensive from Stuart, is now available in new 28 day calendar packs.

The new packs are designed to help simplify prescribing and will surely help patients to comply with long-term antihypertensive therapy. (writes our medical correspondent).

A prescription for one 28 day calendar pack is sufficient for four weeks treatment at the usual dose of one tablet a day.

Each day of the week is clearly indicated on every pack throughout four weeks. Thus patients will find it is easy to remember to take their once daily tablet.

It is not simply the new calendar pack, however, which encourages long-term patient compliance, but a combination of this and 'Tenormin's' other advantages.

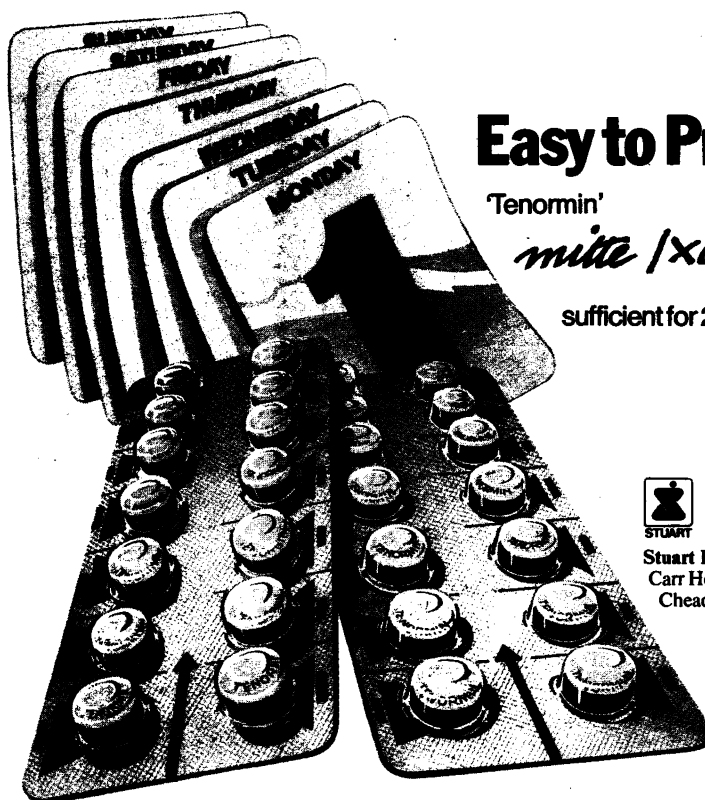
### No Build-up Dosage

'Tenormin' is highly cardioselective, well tolerated by patients and at least as effective as methyldopa. One tablet, once daily is effective throughout 24 hours. No build-up dosage is needed and successful control is achieved within a few days of starting treatment.

### Easy to Remember

'Tenormin' is a simple and most acceptable treatment for hypertension and offers doctor and patient a fresh opportunity for successful co-operation.

## The new 28 day Calendar Packs



### Easy to Prescribe

'Tenormin'  
*mitte 1x0.P. Sig.Td.*  
sufficient for 28 days treatment.



Further information is  
available on request

Stuart Pharmaceuticals Limited,  
Carr House, Carrs Road,  
Cheadle, Cheshire SK8 2EG

FOR HYPERTENSION  
**TENORMIN**

'Tenormin' is a trade mark for atenolol

**One tablet, One strength, Once daily**

SEE INSIDE BACK COVER FOR FULL PRESCRIBING DETAILS