



New  
from  
Roche

# BACTRIM

## double strength

**CONVENIENT/ECONOMICAL/EFFECTIVE**

The well-proven combination of trimethoprim and sulphamethoxazole (co-trimoxazole) now available in a convenient **one-tablet b.i.d.** form.

**Indications**

Treatment of infections of the respiratory tract, urinary tract, gastro-intestinal tract, skin and soft-tissue.

**Dosage**

Standard adult dosage: 1 Double Strength tablet twice daily.

Minimum dosage (for long-term therapy):

$\frac{1}{2}$  Double Strength tablet twice daily.

Maximum dosage:  $1\frac{1}{2}$  Double Strength tablets twice daily.

**Contra-indications**

Marked liver parenchymal damage or blood dyscrasias, severe renal insufficiency, sulphonamide hypersensitivity, pregnancy, premature and newborn babies.

**Precautions**

Maintain an adequate urinary output. Reduce dosage in renal impairment. Regular blood counts are advisable with long-term therapy. Special caution is required in patients predisposed to folate deficiency.

The usual caution in prescribing any drug for women of childbearing age should be exercised. Both trimethoprim and sulphamethoxazole are excreted in breast milk.

**Side-effects**

Nausea, vomiting, glossitis, skin rashes and blood dyscrasias can occur. Discontinue treatment if a skin rash appears. Elderly patients are more prone to blood dyscrasias. Megaloblastic changes in the bone marrow are reversible with folic acid.

**Presentation**

Bactrim Roche Double Strength tablets, each containing 160mg trimethoprim and 800mg sulphamethoxazole, in packings of 50.

Product licence number: PL 0031/0110

Bactrim Roche is also available as single-strength tablets (dispersible), Drapsules, paediatric tablets, adult suspension and paediatric syrup.



Full prescribing information is available. Roche Products Limited, PO Box 2LE, 15 Manchester Square, London W1A 2LE. Bactrim and Drapsules are trade marks

J098218/1177

# A Colour Atlas of NEUROPATHOLOGY

C. S. Treip, M.A., M.D., Ph.D., F.R.C.Path.

This introductory manual of diagnostic neuropathology will be welcomed by pathologists in training and senior medical students as well as by workers in the fields of clinical neurology, neurosurgery and psychiatry.

The high quality profuse colour and other illustrations beautifully represent most conditions commonly encountered by the neuropathologist and are amplified by a most lucid text.

**166 colour photographs and 151 in black and white**

£15.00

**Wolfe Medical Publications**  
10 Earham Street London WC2H 9LP

**PUVA** *is now available  
for private patients at*

**PSORIASIS UVA (Medical Referrals Only) Ltd.,**  
2 HARMONT HOUSE,  
20 HARLEY STREET, London W.1.

Telephone 01-580 0875

*For details please contact  
the Physician-in-Charge.*

## camera talks

audio visual aids

a series on  
**HEALTH & SAFETY  
AT WORK**

31 north row, London W1B 2EN  
tel 01 493 2761

Abrasive Wheels 1-2  
Hazards in Hospital 1-2  
Hazard Spotting in Industry 1-2  
Manual Handling in Industry 1-3  
Noise & Hearing 1-2  
Office Safety 1-2  
Practical Laboratory Safety  
Prevention of Chemical Burns 1-2  
Safe or Sorry 1-2  
Safety & Health at Work 1-2  
Safety in Industry 1-2 (Eye & Skin)

## CONJOINT ANNUAL GENERAL AND SCIENTIFIC MEETING PROCEEDINGS

British Medical Association  
Irish Medical Association  
Canadian Medical Association

DUBLIN 1976

### CONTENTS

The value of screening procedures in the early detection of disease • Recent advances: Genetic Engineering: Septic shock • Medical audit • Current Developments: Control of Obesity: Thrombo embolic disease: Induction of labour • Doctors at risk • The changing role of the family practitioner • History of Medicine.

Size: 7" x 9½" Paperback 178 pages

**Price: Inland £10.00; Overseas US\$25.00,  
including postage**

**ORDER FROM: BRITISH MEDICAL JOURNAL,**  
BMA House, Tavistock Square, London WC1H 9JR



### The friendly land

Hospitable. English-speaking. Warm and kind. Stay at an hotel, a farmhouse, a camp site, or where you will. You'll like the people. Meet them on a fjord voyage, touring, driving, hiking. They're always pleased to meet you. Send for brochure.

Please send me details of  
Norway holidays.

Name .....

Address .....

.....

..... NT021/1

Norwegian National Tourist Office  
20 Pall Mall, London SW1Y 5NE

## Recently Published

# 17th edition of **BAILEY AND LOVE'S SHORT PRACTICE OF SURGERY**

Revised by A. J. HARDING RAINS, M.S., F.R.C.S.  
and H. DAVID RITCHIE, M.A., Ch.M., F.R.C.S.

1352 pages    1531 illustrations    £17.50 net

**H. K. LEWIS & CO. LTD.**

MEDICAL PUBLISHERS AND BOOKSELLERS

136 GOWER STREET, LONDON WC1E 6BS

## **Journal of medical ethics**

A multi-disciplinary commentary on clinical practice published quarterly by the Society for the Study of Medical Ethics: London.

*Papers appearing in Volume 2, 1976, include:*

**Is a moral consensus in medical ethics possible?** (Basil Mitchell, Oriel College, Oxford); **Some problems of confidentiality in medical computing** (R. D. Cohen *et al.*, The London Hospital); **Interdisciplinary teamwork** (M. de Wachter, Nijmegen Medical School); **The use of animals in research** (W. Lane-Petter, University of Cambridge); **Selective abortion for congenital abnormalities** (Mary J. Seller, Guy's Hospital Medical School); **Barbiturate abuse** (P. T. d'Orban, St. George's Hospital); **Issues of public policy in the USA raised by amniocentesis** (A. Etzioni, Columbia University); **Medical practice: defendants and prisoners** (Paul Bowden, Institute of Psychiatry, Maudsley Hospital).

The teaching of medical ethics is also covered in a series of contributions from different countries.

*Please send manuscripts for publication to:*

Dr. A. V. Campbell, Editor, **Journal of medical ethics**, University of Edinburgh, New College, The Mound, Edinburgh EH1 2LX, Scotland.

*Annual Subscription Inland £12.00;  
Overseas US\$25.00*

ORDER FROM: Professional & Scientific Publications, Tavistock House East, Tavistock Square, London WC1H 9JR or through any leading subscription agent.

# Are you interested in ...

## Medicine

## Physiological Measurement

## Bioengineering

*Physics in Medicine and Biology* is a major, established journal, published by The Institute of Physics.

It contains original papers, notes and letters, and commissioned review articles covering all aspects of the application of physics to medicine and biology, including:

Radiation dosimetry and physics, radiobiology, radio-isotopes.

Diagnostic techniques using x-rays, ultrasonics or thermography, bioengineering and physical techniques in physiology.

Computer and instrumental applications in these areas.

An extensive abstracts section is included. These classified abstracts scan a wide range of journals in related subjects. Many of these publications may not be on your library shelf. The journal also includes short abstracts of papers presented at the major meetings and conferences of its sponsoring bodies, book reviews and a diary of forthcoming events.

Honorary Editor: H A B Simons (*Royal Free Hospital School of Medicine*)

1978	Volume 23	6 issues	
USA, Canada and Mexico (air freighted)			\$115.00
Australia, New Zealand and Japan (air speeded)			£56.00
United Kingdom and all other countries			£50.00

Microfiche is also available at £31.00 or \$74.00 in USA, Canada and Mexico.

To begin your subscription, or to request a sample copy, just write to The Circulation Manager, Room 141, The Institute of Physics, Techno House, Redcliffe Way, Bristol BS1 6NX.

# Cut the cost of motoring

**When you insure and  
When you buy—with the M.I.A.**

*Here are two special schemes that the Medical Insurance Agency has arranged exclusively for members of the medical and dental professions:*

## INSURANCE

Motor insurance is rising constantly, but the M.I.A. has arranged an attractive policy for doctors and dentists, who will enjoy a special discount in addition to their existing "no-claims" bonus entitlement, with the choice of insuring vehicles at an agreed value, or at current market value.

And now, for an outlay of only an additional £10, also subject to the special discount, sons and daughters can be covered by the policy too, whilst partners, assistants and locums are automatically included at no extra cost.

## CAR PURCHASE

The M.I.A. has arranged an attractive car purchase plan through British Medical Finance, at a highly competitive charge. The finance period can be up to a maximum of three years.

Buying, insuring or both — you will benefit from sending the coupon below for full details. Don't wait until you are ready to buy, or until your present insurance policy needs renewing — get the facts now!

The Medical Insurance Agency has a specialised knowledge of Insurance and Finance based on:

70 years of service to the professions.

23 local offices providing a direct personal service.

Over 200 trained and qualified staff.

A continuing commitment to medical and dental charities — already in excess of £1 million donated.

To the: **Medical Insurance Agency Ltd.,  
B.M.A. House, Tavistock Square,  
London WC1H 9JD**



*Please send me full details of the scheme(s). I have ticked below, and remind me in good time before my existing policy expires.*

☐ Car Purchase ☐ Car Insurance

BLOCK LETTERS PLEASE

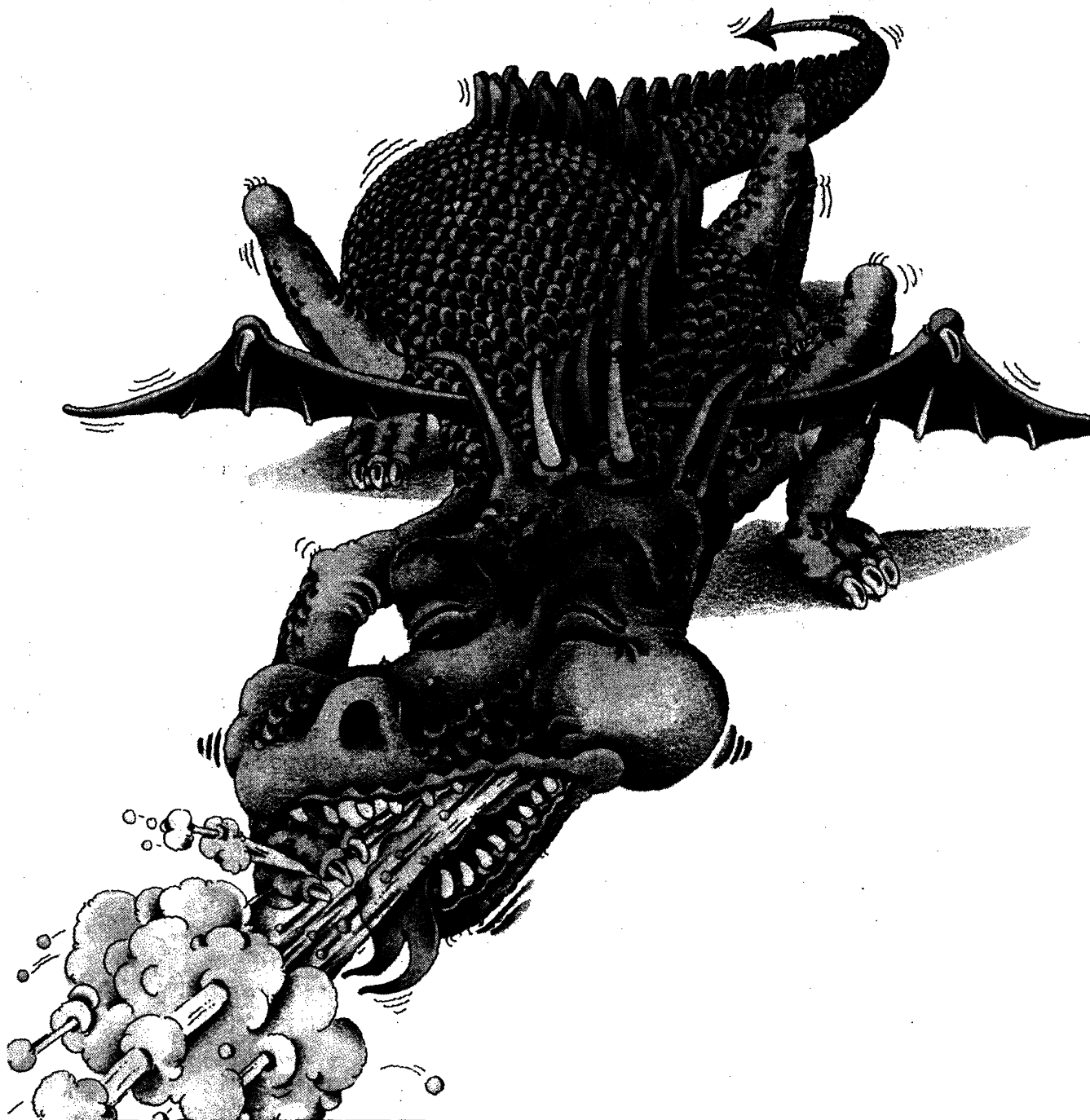
Name \_\_\_\_\_

Address \_\_\_\_\_

\_\_\_\_\_ Tel. No. \_\_\_\_\_

Expiry date of existing policy \_\_\_\_\_ BMJ.1/78

# For a beast of a cough



## ACTIFED COMPOUND LINCTUS

### The cough-stopper for adults and children alike

Actifed\* Compound Linctus contains triprolidine hydrochloride, pseudoephedrine hydrochloride, and codeine phosphate in a palatable fruit-flavoured syrup.

\*Trade Mark

Full prescribing information is available on request.  
Wellcome Medical Division  
The Wellcome Foundation Ltd.  
Berkhamsted, Herts



***“The ideal chemotherapeutic agent...  
should exhibit selective and effective  
antimicrobial activity, and it should  
be bactericidal rather than bacteriostatic.”***

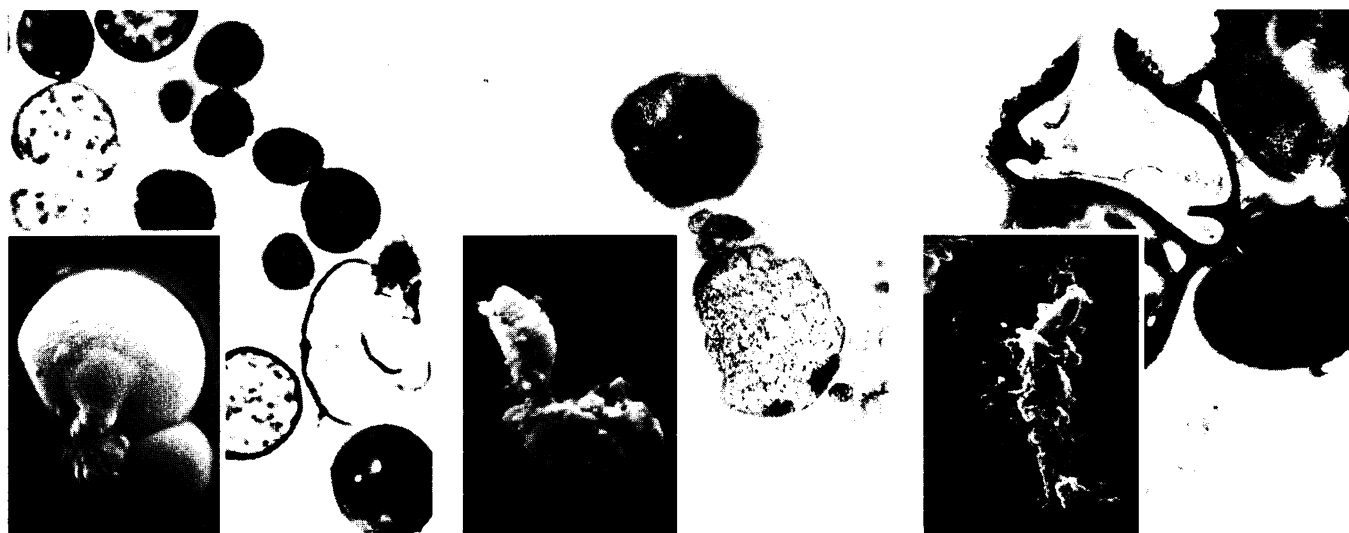
Goodman, L.S. and Gilman, A. (eds) (1975). *The Pharmacological Basis of Therapeutics*, 5th Ed, New York; MacMillan.

## ***in vivo Results***

Staphylococcus aureus after 3 days treatment with Erythrocin 500. Intracellular dissolution almost total. Surface defects consistent with protein synthesis inhibition.

After 3 days therapy pneumococcus exhibits marked cellular deformity with secondary cell wall and membrane changes.

Beta-haemolytic streptococcus after 5 days treatment with Erythrocin 500. Dissolution of cellular integrity is almost total and cellular debris can be seen quite clearly.



**The Bactericidal Potency of**

# **ERYTHROCIN**

***effective · selective* 500**

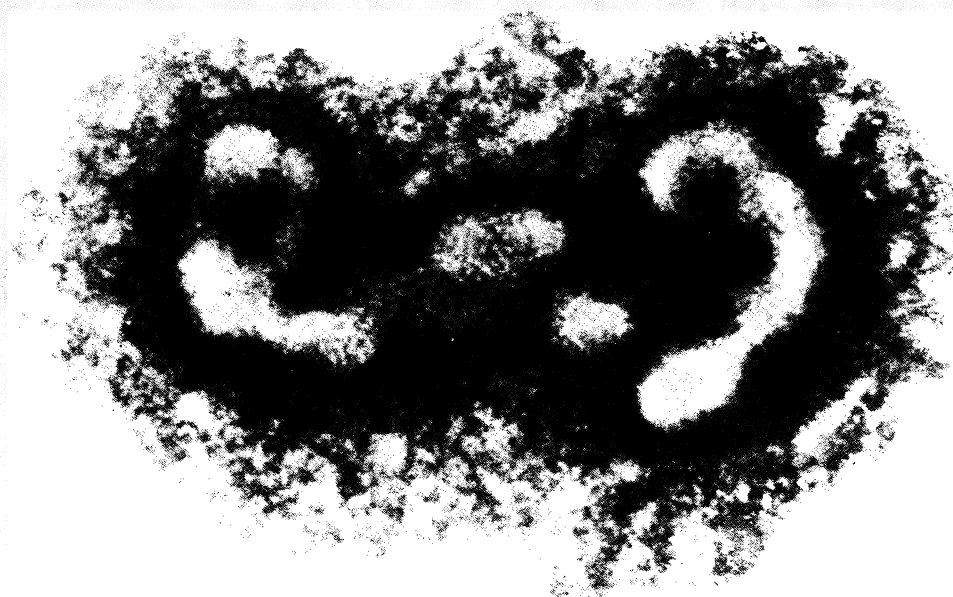


Pictures taken from an *in vivo* co-operative study by Merle Balbirsingh *et al* (in Press)

Full prescribing information on

Erythrocin 500 (Erythromycin Stearate, Abbott) is available on request from Abbott Laboratories Ltd., Queenborough, Kent, ME11 5EL.

EC 352



## **Symmetrel<sup>®</sup>** **Capsules**

inhibit replication of the following viruses:

### **A<sub>2</sub> Influenza**

A/Hong Kong/68

A/England/72

A/Port Chalmers/73

A/Scotland/74

A/Victoria/3/75

A/Victoria/112/76

### **"Swine" Influenza**

A/New Jersey/76

A specific antiviral agent for the treatment or protection of patients at risk from A<sub>2</sub> influenza infection.

Symmetrel is available as brownish-red flexible gelatin capsules containing 100mg amantadine hydrochloride in containers of 100 capsules.

Full prescribing information is available.

Geigy Pharmaceuticals, Macclesfield, Cheshire, SK10 2LY.

## **Geigy**