

Sleep

When natural sleep flies out of the window

DALMANE

ROCHE

Dalmane is the trade mark for pharmaceutical preparations containing flurazepam. Full prescribing information is available
 Roche Products Limited, PO Box 2LE, 15 Manchester Square, London W1A 2LE J236187/377

ST. ANDREW'S HOSPITAL NORTHAMPTON

PRIVATE PSYCHIATRIC CARE— A COMPREHENSIVE FACILITY

St. Andrew's aims to provide the best in psychiatric care in a comfortable and relaxed environment. Staffed by eight full-time Consultant Psychiatrists, three Clinical Psychologists and with a full complement of skilled nursing and rehabilitation staff, the hospital offers a broad range of psychiatric treatments. Care is provided on a short, medium and long term basis and the following specific units are available:

- SHORT TERM ACUTE TREATMENT
- ALCOHOL TREATMENT
- BEHAVIOUR MODIFICATION
- DAY HOSPITAL
- PSYCHOGERIATRIC
- BRAIN DAMAGE AND EPILEPSY INVESTIGATION
- PSYCHOTHERAPY
- MENTAL HANDICAP

Out-patient facilities are available at the hospital, at 148 & 152 Harley Street, London W1, Oxford and Bedford.

St. Andrew's is an Independent Hospital and subscribers to the main Private Contributory Schemes may claim benefits within the terms of these schemes.

Further details and brochures may be obtained from:
The Medical Director, St. Andrew's Hospital,
Northampton (Telephone 0604 — 21311).

PUVA *is now available for private patients at*

PSORIASIS UVA (Medical Referrals Only) Ltd.,
2 HARMONT HOUSE,
20 HARLEY STREET, London W.1.

Telephone 01-580 0875

*For details please contact
the Physician-in-Charge.*

THE RETREAT, YORK for Psychiatric Illnesses

Founded in 1792 by the Quaker, William Tuke, who established the tradition of concern for patients as individuals, The Retreat is a 250-bedded private registered nursing home surrounded by extensive grounds on the outskirts of the historic City of York. It is easily reached by rail and motorways.

Care and treatment is offered for most types of psychiatric illness on the short or long term in a sympathetic and friendly atmosphere. Patients suffering from neuroses, psychoses, alcoholism and dementia are treated in surroundings suitable for their individual needs.

The Nursing Home is a registered charity and is able to offer inclusive care in shared accommodation from £12.65 per day or in single rooms at slightly increased charge. The Nursing Home is recognised by the main private patient schemes.

For further details apply to The Medical Director, The Retreat, York. YO1 5BN (Tel. 0904-54551).

HEINEMANN

INFECTIOUS DISEASES—Second Edition

A Melvin Ramsay, MA, MD, and Ronald T D Edmond MB, ChB, FRCP, DTM&H

Suitable for the undergraduate or specialist this new edition reflects the vast increase in the knowledge of infectious diseases which has occurred in the past decade.

416 pages

£19.95 net

FOUNDATIONS OF MEDICINE: A STUDENT'S GUIDE

Ronald Raven, OBE, OStJ, TD, FRCS

A guide for the medical student who is emerging from the preclinical scene into the realm of patient care.

372 pages

£10.00 net

HANDBOOK OF LEPROSY—Second Edition

W H Jopling, FRCP, MRCP, DTM&H

This book details in depth the mode of spread of the disease, the role of immunity in classification and the outlook for a new line of therapy.

144 pages

£3.75 net

ACUPUNCTURE: THE ANCIENT CHINESE ART OF HEALING—Third Edition

Felix Mann, MD

New edition of a popular book which describes the basic principles and laws of acupuncture according to the theories of traditional Chinese medicine.

212 pages

£5.00 net

HEAD AND NECK SURGERY—Second Edition

P M Stell, FRCS, and A G Maran, MD, FRCS

Characterised by its great clarity this book is designed for the surgeon who is embarking on practice in this field for the first time.

400 pages approx.

£10.00 net approx.



William Heinemann Medical Books Ltd
23 Bedford Square, London WC1B 3HT

NOW AVAILABLE

**BUTTERWORTHS
MEDICAL****DICTIONARY** — 2nd Edition

Revised by a team of 50 consultants under the General Editorship of Macdonald Critchley, CBE, MD, FRCP FACP (Hon)

Thoroughly revised and updated for:

- The Medical Profession
- Hospital Staff
- Medical Libraries
- Medical Secretaries
- Editorial Staff of the Medical Press
- The Legal Profession
- Pharmaceutical Chemists
- Public Services including Police and Health Officials

1978	276 x 219mm	1984 pages
0 407 00061 5	£45.00	\$90.00

POSTGRADUATE NEPHROLOGY — 2nd Edition
Roger Gabriel

Jan 1978	256 pages	Illustrated
0 407 36115 4	£6.75	\$13.50

HIP DISORDERS IN CHILDREN
(Postgraduate Orthopaedics Series)
G.C. Lloyd-Roberts and A.H.C. Ratliff

Feb 1978	304 pages	Illustrated
0 407 00128 X	£17.50	\$35.00

X-RAY ANATOMY
George Simon and W.J. Hamilton

Feb 1978	352 pages	Illustrated
0 407 00096 8	£25.00	\$50.00

**PRINCIPLES OF CHEST X-RAY
DIAGNOSIS** — 4th Edition
George Simon

Feb 1978	304 pages	Illustrated
0 407 36323 8	£19.00	\$38.00

BUTTERWORTH & CO (PUBLISHERS) LTD.,
Borough Green, Sevenoaks, Kent TN15 8PH
Tel: 0732 884567

millophyline
(Esmilophyline Camavate)

**Respiratory and cardiac
stimulant Bronchodilator**

Distributor in the United Kingdom
FARLON LIMITED
Chesham House, Chesham Close,
Romford, RM1 4JX tel: Romford 48033

Full product information available upon request

dales pharmaceuticals limited

Barrows Lane, Steeton, Keighley, Yorkshire, BD20 6PP (Steeton 53222)

**The Kirby Lester
Cardiograph**
the soundest one around

**48 hour
SERVICE
ON YOUR
PREMISES**

And to prove it we're giving a
2 YEARS FULL GUARANTEE
backed up by a service department second to none.

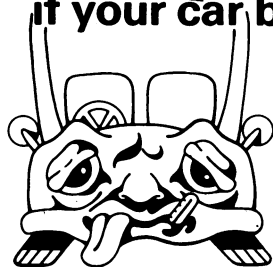
This battery powered British ECG is manufactured to the highest standards and will more than satisfy your performance requirements.

Complete in its own robust briefcase style case the Kirby Lester Cardiograph is unbeatable at £495 plus V.A.T.—write now for a demonstration.

**KIRBY
LESTER
LIMITED**

Kirby Lester Electronics Ltd.,
Osborne Industrial Trading Estate,
Waddington Street,
Oldham OL9 6QQ.
Tel: 061-620 1421

Will your practice stand up if your car breaks down?



Car Finance for Doctors and Dentists

Get details of this scheme for Car purchase offered to the profession by

Medical Sickness Finance Corporation Limited

Company registration number 464750-London

- Minimum deposit
- Maximum period of repayment
- Payments waived on death

For particulars write to us mentioning this advertisement at

7-10 Chandos Street, Cavendish Square, London W1A 2LN or Telephone: 01-636 1686

Registered Office



A MEMBER OF THE MEDICAL SICKNESS GROUP

DOCTORS ABROAD

Copies of vacancies advertised in the *Journal* can be sent AIRMAIL. For members of the BMA there is no charge for five weeks' supply covering five separate headings. Non-members' rate: £6 minimum for six weeks' supply of five headings or less. Additional headings for non-members: 50p each for six weeks' supply. Orders for specific grades cannot be accepted.

Payment by non-members must be PREPAID and enclosed with application.

BONE AND JOINT DISEASES

Arthritis used to be the Cinderella of diseases, but improved diagnostic techniques, advances in joint replacement surgery, and a whole range of non-steroidal drugs have led to a much more active approach to the management of the common bone and joint diseases. Detailed advice on their diagnosis and treatment was given last year in a series of 16 articles in the *BMJ*, and these have now been gathered together in the latest volume based on the popular "Today's Treatment" series.

Demy Octavo Paperback 131 pages
ISBN 0 7279 0026 9

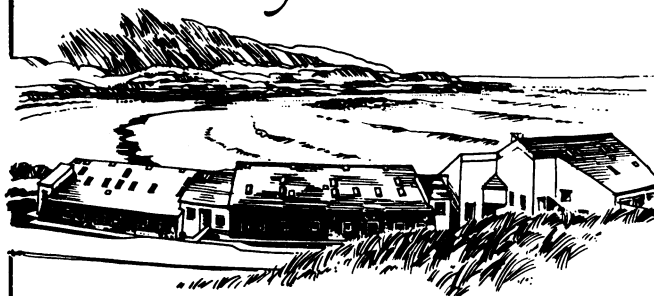
Price: Inland £3.00; Abroad US \$7.50, including postage

Payment must be enclosed with order or a surcharge of 30p will be made for rendering invoices and statements

Order your copy now from

The Publisher, BRITISH MEDICAL JOURNAL,
BMA House, Tavistock Square, London WC1H 9JR
or through any leading bookseller

Isle of Barra



This small island in the Outer Hebrides, makes the perfect setting for a restful and relaxing holiday.

The Isle of Barra Hotel, all 41 bedrooms with private bath, overlooks the secluded Tangusdale bay with its magnificent sands.

A Special Hebridean Package, including travel has been arranged throughout the summer and autumn, and can save up to £47 on an 8 day holiday. Write for colour brochure and Special Hebridean Package to: —

Isle of Barra Hotel, Tangusdale,
Isle of Barra, Outer Hebrides PA80 5XW
Telephone 08714 383



A Scottish Highland Hotel

APPLICATIONS FOR GRANTS

MULTIPLE SCLEROSIS RESEARCH

Applications are invited for Grants funded by the National Multiple Sclerosis Society of Australia for research related to Multiple Sclerosis.

Support will be provided for approved clinical or epidemiological work as well as for laboratory-based studies within Australia.

Applications from suitably qualified persons will also be considered for Post-Doctoral Fellowships.

Intending applicants for project grants should write for further information to:

Mr. S. J. Resch,
Chairman,
National Multiple
Sclerosis Society of Australia,
616 Riversdale Road,
Camberwell, 3124, Australia.

Applications close on Friday, March 31, 1978.

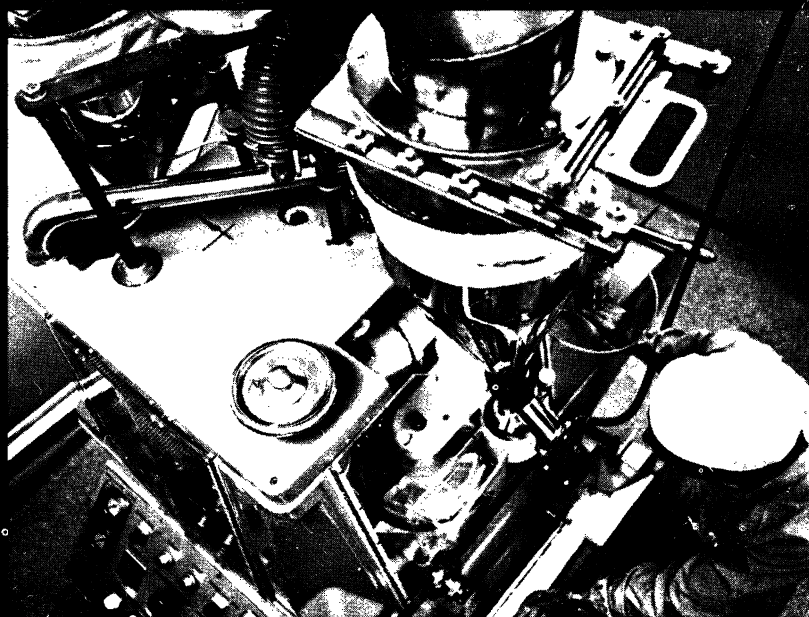


RESEARCH ADVISORY BOARD:
D. R. Curtis (Chairman),
E. French (Vice Chairman),
P. R. Carnegie,
J. F. Hallpike, B. A. Kakulas, C. Kidson and J. G. McLeod.

DISCOVERY—

In 1929, the pure crystalline digoxin was isolated from *digitalis lanata* by Wellcome research workers.

Digitalis lanata



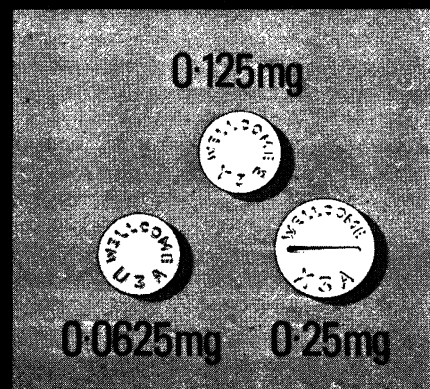
Wellcome production at Dartford, Kent

CONSISTENCY—

Tablet equivalence has been maintained by the highest standards of manufacture.

FLEXIBILITY—

The LANOXIN tablet range (plus the PG Elixir and Injection) offers greater flexibility of dosage.



LANOXIN

TRADE MARK

Wellcome research into practice

Full prescribing information about Lanoxin (digoxin) is available on request.
Wellcome Medical Division, The Wellcome Foundation Ltd., Berkhamsted, Herts



Prothiaden

What's the significance of the new 75mg tablet?

Presentation Prothiaden is dothiepin hydrochloride, an antidepressant of the tricyclic group.

Prothiaden is available as sugar-coated tablets, each containing 75mg of dothiepin hydrochloride. The tablets are red in colour and bear the overprint 'P 75' in white. It is also available in hard gelatin capsules, each containing 25mg of dothiepin hydrochloride. The capsules are red/brown in colour with the overprint 'P25' in white.

Uses Prothiaden is indicated in the treatment of depression and the anxiety frequently associated with depressive illness.

Dosage and Administration Prothiaden should be given in a dosage of 75 to 150mg daily. The following dosage schemes are suggested:

Mild to moderate depression, 25mg three times daily or 75mg at night.
Moderate to severe depression, 150mg daily in divided doses, or as a single dose at night. (If the latter regimen is adopted, it is preferable to use a smaller dose for the first few days).

In certain circumstances, i.e. in hospital use, Prothiaden has been given at dosages up to 225mg daily. No dietary restrictions are necessary during treatment with Prothiaden.

Contra-indications, Warnings, etc. Prothiaden has anticholinergic properties; therefore, it may precipitate urinary retention in susceptible individuals and its use should be avoided in patients with existing or potential urinary retention. Patients with closed-angle glaucoma should not be given Prothiaden and the occurrence of a painful red eye in a patient receiving the drug may indicate acute closed-angle glaucoma; this requires urgent treatment. In patients with chronic simple glaucoma, the risk of Prothiaden causing a rise in intraocular pressure is relatively small provided adequate anti-glaucoma therapy is being used. Caution is advised when treating epileptic patients and those with cardiovascular disorders. From studies in animals, it was concluded that Prothiaden had no teratogenic effects in the species tested. Nevertheless, as with any relatively new drug, the use of Prothiaden during pregnancy should be avoided if possible.

Use with other drugs: Prothiaden should not be given concurrently with MAO inhibitors; nor should it be given within 14 days of ceasing treatment with an MAO inhibitor. Prothiaden may alter the pharmacological effects of some concurrently administered drugs: CNS depressants, including alcohol and narcotic analgesics, will be potentiated, as will the effects of adrenaline and noradrenaline (it should be borne in mind that some local anaesthetic preparations contain these sympathomimetics). The hypotensive effect of certain antihypertensive agents (e.g. bethanidine, debrisoquine, guanethidine) may be reduced.

Side-effects: Generally, the side-effects associated with Prothiaden have been mild and controlled by reduced dosage. The following have been reported—dryness of mouth, constipation, disturbed accommodation, lassitude, dizziness, orthostatic hypotension, palpitations, somnolence, tremor, headache.

Overdosage: The symptoms of overdosage with Prothiaden may include sedation, dry mouth, blurring of vision, tachycardia, tremor, sweating, nausea, vomiting, confusion. The main dangers from overdosage arise from unconsciousness, convulsions, abnormal cardiac rhythms, hypotension and depression of respiration. The smallest dose of Prothiaden alone which resulted in the death of an adult was reported to be 0.75–1.0g (30 to 40 x 25mg capsules). The largest dose from which recovery took place was reported to be 5.0g (200 x 25mg capsules). In view of the many factors which influence the outcome of an overdose, these figures should not be considered in isolation.

Treatment of overdosage: Gastric lavage; in the unconscious patient or where the cough reflex is depressed, the lungs should be protected by a cuffed endotracheal tube. Repeated gastric/intestinal aspiration may remove drug and metabolites excreted into the gut via the bile. General support of the circulation with continuous ECG monitoring is advised. Abnormalities of cardiac rhythm and epileptic convulsions may occur and should be treated accordingly. Forced diuresis and haemodialysis are not recommended. Bed-rest is advisable, even after clinical recovery.

Pharmaceutical Precautions—Recommended storage conditions 5°C to 20°C.

Legal Category POM.

Package Quantities—Prothiaden Tablets (75mg) 100, 500. Prothiaden Capsules (25mg) 100, 600.

Basic NHS Prices: 100 x 25mg £1.57 600 x 25mg £9.03
100 x 75mg £4.52 500 x 75mg £21.70

Product Licence Number Prothiaden capsules PL 0096/5007. Prothiaden Tablets PL 0096/0046.

The Crookes Laboratories Ltd., Basingstoke, Hants.

References: 1. Pearce, J. B. & Linford Rees, W. J., *Int. Med. Res.* 1974, **2**, 12.
2. Rees, J. A. & Cryer, P. C. *Curr. Med. Res. Opin.* 1976, **4**, 416.

Prothiaden 75mg

more effective, better tolerated
treatment for depression and anxiety.

... dothiepin in a single daily dose is better tolerated and produces a greater overall response than a divided dose regimen of amitriptyline.

2

... with dothiepin both the incidence and severity of side-effects were much less than with amitriptyline.

2

... A single daily dose of dothiepin (Prothiaden) has been shown to produce a better clinical response and to be better tolerated than a divided daily dose regimen. 1

Pitman Medical



THE MULTIPLE CHOICE QUESTION IN MEDICINE

J. ANDERSON

"This is an excellent book, giving the detailed practical aspects of setting, marking, and analysing questions of the multiple true/false type . . . highly recommended to those who wish to set or use multiple choice questions . . . for those who are going to be candidates in examinations that contain multiple choice questions."—*British Journal of Hospital Medicine*

170 pages Paperback £3.00 net

THE DOCTOR, HIS PATIENT AND THE ILLNESS

M. BALINT

This book has become a famous medical classic and, in conjunction with the other work of its distinguished author, caused a profound change in thinking about medicine and general practice. It provides a unique study of the doctor-patient relationship.

395 pages Paperback £6.00 net

AIMS AND MOTIVES IN CLINICAL MEDICINE

B. P. BLISS and A. G. JOHNSON

"This well-written and well-produced book meets a real need for all those in medicine and nursing . . . certainly deserves further editions. The ethical problems involved in clinical research, investigation and treatment pose ever more difficult questions. The authors' essentially practical approach to these problems, and in particular their guidelines for decision-making, are most helpful. . . ."—*The Practitioner*

196 pages Paperback £3.50 net

FUNDAMENTALS OF CLINICAL ENDOCRINOLOGY

R. HALL, J. ANDERSON, G. A. SMART, M. BESSER

"This textbook is aimed at a broad medical audience and makes excellent reading for specialist and nonspecialist alike . . . clearly serves the purpose intended for it by the authors and is thoroughly recommended. It is clearly set out, very enjoyable, and should prove of practical value to physicians and surgeons working in areas bereft of clinical endocrinologists."—*British Journal of Hospital Medicine*

500 pages Paperback Illustrated £8.00 net

INTRODUCTORY MEDICAL STATISTICS

R. F. MOULD

"The great virtue of this book is its readability. For this reason alone it can be confidently recommended to those medical students, undergraduate and postgraduate, who feel insecure when they first dip into statistical waters . . . provides a commendable introduction to medical statistics."—*Journal of the Royal College of Physicians*

110 pages Cased £4.00 net

PRACTICAL CONTRACEPTION

S. RAMASWAMY and T. SMITH

"Here is an essentially practical manual of contraception which can be strongly recommended to all concerned. It is an easy book to hold and to read, clearly written and pleasantly set out, and has the particular merit of covering its ground in under 150 pages, including an excellent index."—*British Medical Journal*

149 pages Illustrated Cased £3.50 net

TUTORIALS IN DIFFERENTIAL DIAGNOSIS

E. R. BECK, J. L. FRANCIS, R. L. SOUHAM

"This excellent little book can be recommended to every medical student, no matter what branch of medicine he intends to follow. The book is an object lesson in the principles of diagnostic medicine."—*The Lancet*

220 pages Paperback £5.00 net

Mrs. Jackson's migraines, while frequent, do not follow an entirely predictable pattern. She dislikes the side-effects of ergotamine treatments: long-term prophylaxis would involve an unacceptable degree of over-medication. Is there an alternative?

2 PINK MIGRALEVE*, taken at the first warning, will often completely abort impending Migraine attacks. Residual symptoms, if any occur, can be controlled with Yellow Migraleve. Like most patients, Mrs. Jackson will find such a regime preferable, because Migraleve offers:

- Less medication than with long-term prophylactic treatments
- Economic dosage, taken only as attacks threaten
- Proven effectiveness in 79% of attacks¹
- Considerably less vomiting than with ergotamine¹
- Proven patient preference²

Migraleve ^{NON-ERGOTAMINE} [®]
the migraine treatment patients prefer

References:

- 1) *Practitioner* (1973), 211, 357
- 2) *Medical Digest* (1972), 7, 17

MIGRALEVE PINK tablets contain buclizine, paracetamol, codeine
Migraleve Yellow tablets contain paracetamol, codeine.

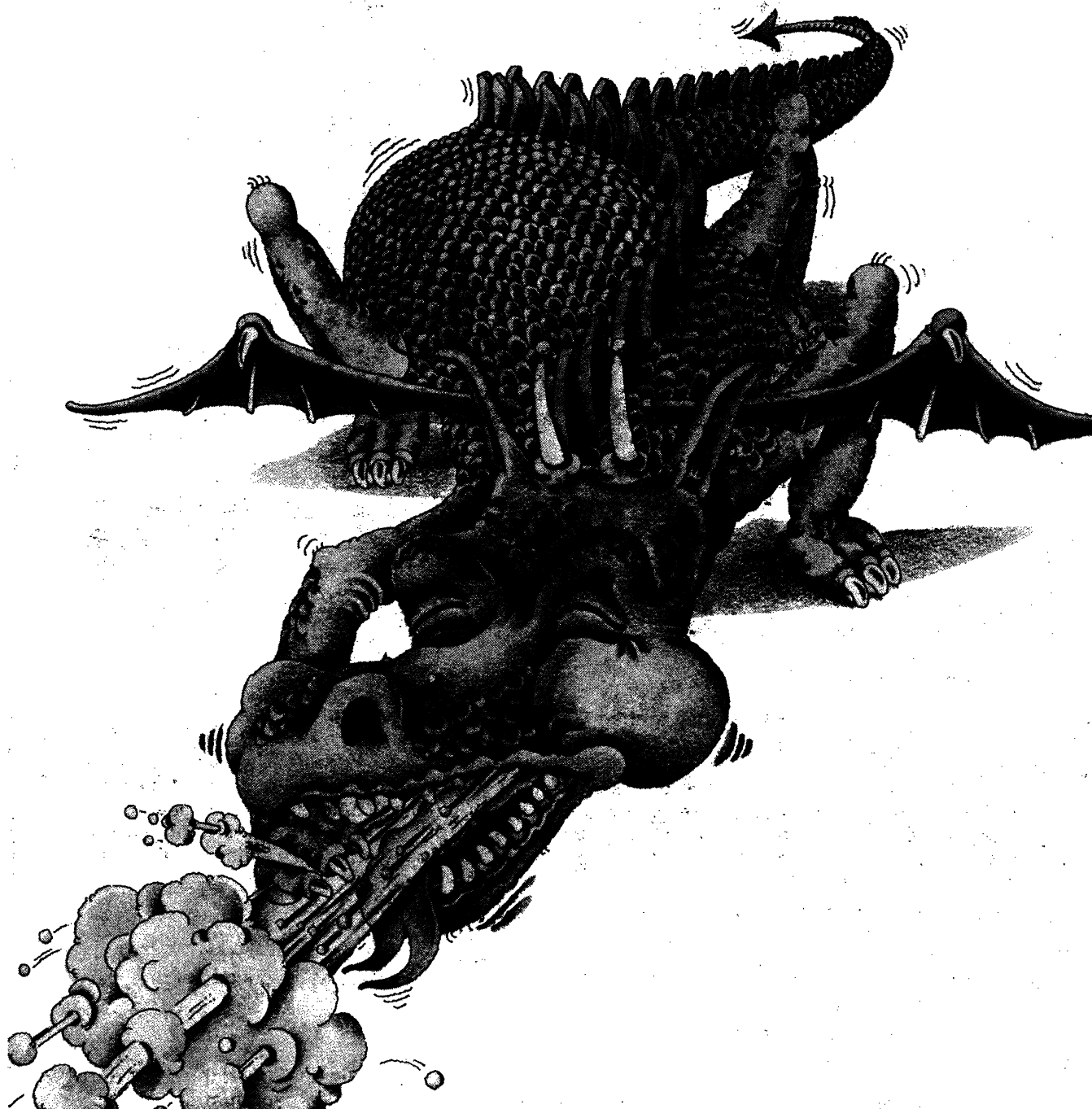
* The Migraleve duo-treatment pack (containing Pink & Yellow Migraleve) requires a double prescription charge. When a patient's individual requirements have been assessed, it should be noted that Pink or Yellow Migraleve may be prescribed separately in multiples of 12.



Full information available by post only from

International Laboratories Ltd.
Sunbury-on-Thames, Middlesex TW16 7HN

For a beast of a cough



ACTIFED COMPOUND LINCTUS

The cough-stopper for adults and children alike

Actifed* Compound Linctus contains triprolidine hydrochloride, pseudoephedrine hydrochloride, and codeine phosphate in a palatable fruit-flavoured syrup.

*Trade Mark

Full prescribing information is available on request.
Wellcome Medical Division
The Wellcome Foundation Ltd.
Berkhamsted, Herts



Wellcome



Remembering Henry

Edited by Stephen Lock and Heather Windle

"That the book is worth while is confirmed because so many people of distinction in such varied occupations wished to contribute; he comes through as one of the great characters of mid-twentieth century medicine, but his solid contributions to medicine and the other elements of his career are brought out as well. The readers will enjoy **Remembering Henry**."

Noble, John S., *British Medical Journal*, 1977, 2, 886

"... even readers unlucky enough not to have known Henry Miller or felt his vibrations will gain much from this splendid book. The BMA has produced nothing like it before. I bet they never will again."

Dixon, Bernard, *World Medicine*, 1977, 13, 25

"Anyone who knew or worked with Henry Miller will find the £3 asked for this lament well spent. But so will many others, if only for the enjoyment of attempting to determine from all the clues whether the late vice-chancellor was a self-indulgent, egotistical clown, or a courageous, great-hearted, witty champion of the truth, or a rumbustious and never-to-be repeated conglomerate of all these things and more."

Gould, Donald, *New Scientist*, 1977, 76, 236

Demy Octavo
Paperback
166 pages

ISBN 0 7279 0027 7

Price: Inland £3.00; Overseas US\$7.50, including postage
(Members of the BMA may purchase this book at the special price of:
Inland £2.50; Overseas US\$6.25)

ORDER YOUR COPY NOW
From: The Publisher, BRITISH MEDICAL JOURNAL,
BMA House, Tavistock Square, London WC1H 9JR

SINUSITIS BRONCHITIS

Vibramycin^{*}

brand of doxycycline

* Trade Mark

for fast, powerful penetration^{1,2} in sinus cavities and lungs

Indications: sinusitis, bronchitis and other infections caused by susceptible strains of Gram-positive and Gram-negative organisms. **Contra-indications:** hypersensitivity to any of the tetracyclines. **Warnings:** the use of Vibramycin during tooth development may cause discolouration of teeth. Antibiotics including Vibramycin, may occasionally result in overgrowth of non-susceptible organisms. **Side Effects:** nausea and vomiting are the side effects most commonly reported.

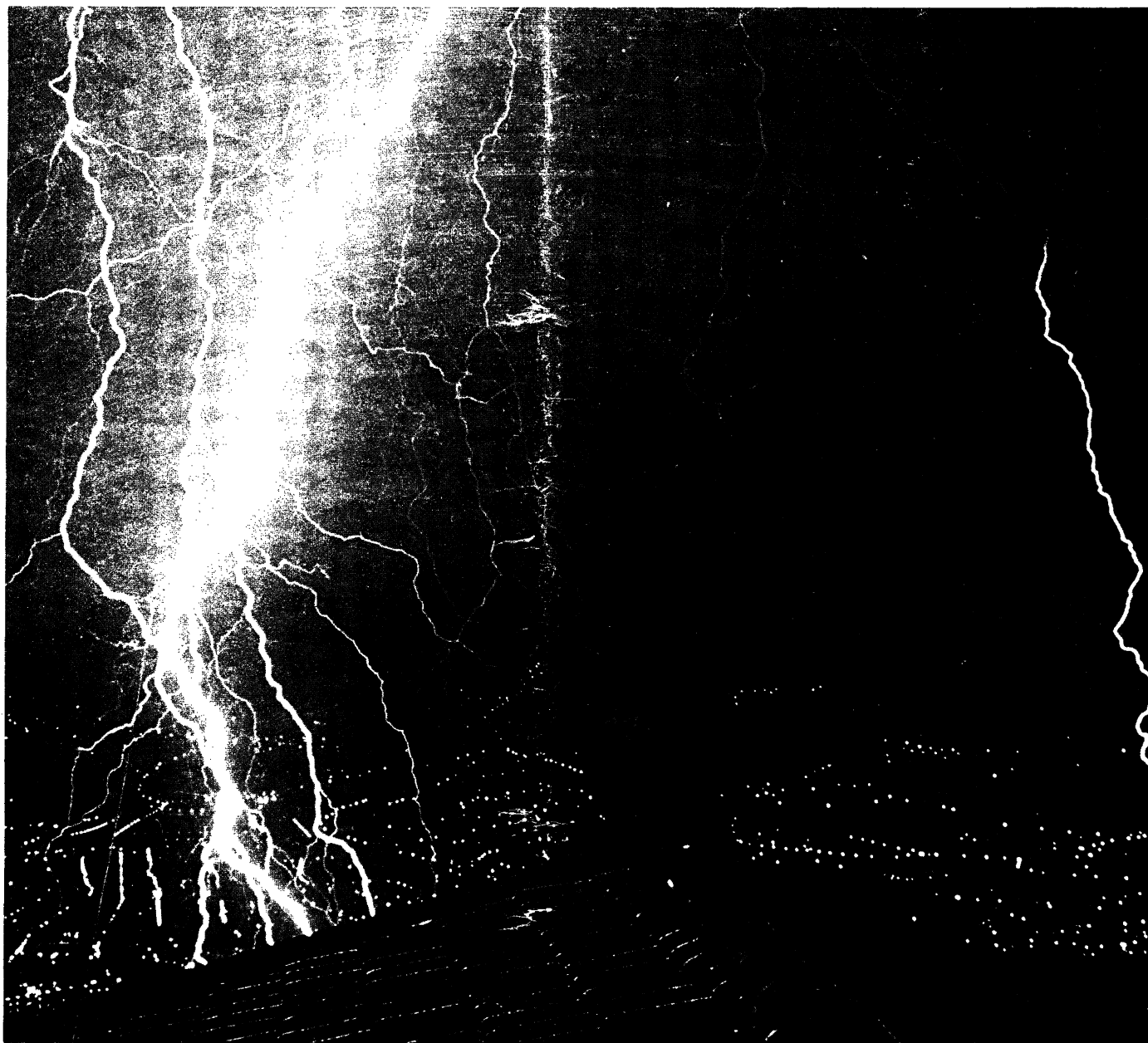
Vibramycin is available as opaque green capsules, each containing 100 mg. of doxycycline as the hydrochloride. Vibramycin is also available as a syrup — each 5 ml. spoonful containing the equivalent of 50 mg. of doxycycline as the calcium chelate. **Basic N.H.S. Cost:** Capsules 100 mg. (PL 57/5059), pack of 10, £4.21, pack of 50, £19.99; Syrup 30 ml. (PL 57/5060), £1.32. Further information on request to the Company.

1. *Chemosphere*, 1975, Vol. 21 (Suppl. 1), 1-7
2. *Journal für Therapie*, 1971, T1, 475-8

3. *Schwartz, med. Monat.*, 1971, 101, 626-634
(English translations available)



PFIZER LIMITED
SARUM HILL, GENEVA



"I now use carbamazepine (Tegretol®) as the drug of first choice in grand mal and psychomotor epilepsy because of its remarkable freedom from serious toxicity and excellent clinical results."

Scottish Medical Journal 21:11 (1976)

Tegretol® is also the drug of choice for the treatment of trigeminal neuralgia.

Tegretol® (Carbamazepine B.P.) is available as white, unscored 100mg tablets; white, scored 200mg tablets and white suspension of 100mg/5ml syrup.



Geigy

Full prescribing information is available.

Geigy Pharmaceuticals
Macclesfield
Cheshire