



Remembering Henry

Edited by Stephen Lock and Heather Windle

"That the book is worth while is confirmed because so many people of distinction in such varied occupations wished to contribute; he comes through as one of the great characters of mid-twentieth century medicine, but his solid contributions to medicine and the other elements of his career are brought out as well. The readers will enjoy **Remembering Henry**."

Noble, John S., *British Medical Journal*, 1977, 2, 886

"... even readers unlucky enough not to have known Henry Miller or felt his vibrations will gain much from this splendid book. The BMA has produced nothing like it before. I bet they never will again."

Dixon, Bernard, *World Medicine*, 1977, 13, 25

"Anyone who knew or worked with Henry Miller will find the £3 asked for this lament well spent. But so will many others, if only for the enjoyment of attempting to determine from all the clues whether the late vice-chancellor was a self-indulgent, egotistical clown, or a courageous, great-hearted, witty champion of the truth, or a rumbustious and never-to-be repeated conglomerate of all these things and more."

Gould, Donald, *New Scientist*, 1977, 76, 236

Demy Octavo
Paperback
166 pages

ISBN 0 7279 0027 7

Price: Inland £3.00; Overseas US\$7.50, including postage
(Members of the BMA may purchase this book at the special price of:
Inland £2.50; Overseas US\$6.25)

ORDER YOUR COPY NOW
From: The Publisher, BRITISH MEDICAL JOURNAL,
BMA House, Tavistock Square, London WC1H 9JR

The Newington Unit

Ticehurst House, Wadhurst, Sussex TN5 7JA

This newly formed Unit aims to help those with alcohol-related disorders and to tackle the underlying problem of dependence.

General medical and psychological measures will be supplemented by an educative approach, both during the initial period of stay and subsequently after discharge.

Further information from the Medical Director of the Unit. Telephone: 0580 200391.

A Nestor Nursing Home



For people who need people –
here's more than 25,000 of them

Who's Who 1978
Now available

If you regularly consult it in the library you need your very own copy of Who's Who – the absolutely up-to-date reference book to the lives, works and quirks of the distinguished in all walks of life.
£22.50

Adam & Charles Black



Meet your colleagues, entertain your guests, or enjoy a quiet hour on your own BMA MEMBERS' DINING ROOM

Open Monday to Friday 12.30-2.30 pm

A la carte menu with select wine list at reasonable prices

Table reservations through Catering Manager

01-387 4499

HASTINGS ROOM

(Members' Lounge)

Open daily Monday to Friday

Named after Sir Charles Hastings, founder of the BMA, the Hastings Room houses the Roll of Honour containing the names of members who died in the two World Wars; the Book of Valour; and the Roll of Fellows

Morning Coffee
10.30-11.45 am

Afternoon Tea
3.00-5.00 pm

Licensed Bar

12 noon-2.30 pm; 5.00-6.00 pm

Daily papers and writing facilities provided

CHANGING FACILITIES

Available Monday to Friday for members attending evening functions (or other events). Towels supplied

Reservations through Estates Manager

BMA House is within easy access of central London and within walking distance of Euston, Kings Cross and St Pancras railway stations

BMA House Tavistock Square London
WC1H 9JP Tel.: 01-387 4499

The New Ear Plug that Breathes Bilsom Propp-o-Plast

NEW

Propp-o-Plast is a new disposable ear plug with excellent acoustical properties that breathes. Preformed from finely spun mineral fibres, within a thin porous plastic film covering.

HYGIENE

Propp-o-Plast is 100% disposable, which guarantees that the toughest hygiene requirements are met. The preformed shape is maintained during insertion into the ear, thereby eliminating the need to mould and shape the plug with subsequent contamination of the fibres.

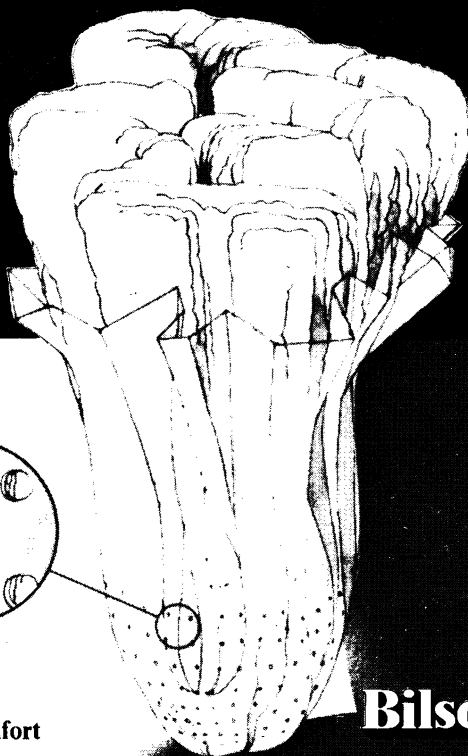
COMFORT

Propp-o-Plast, unlike many types of earplug which merely block the ear canal, breathes. Minute pores in the thin plastic covering allow air and moisture to pass freely. That is why the feeling of pressure or vacuum often experienced with other earplugs is eliminated.

SAFETY

Propp-o-Plast offers improved attenuation in the lower frequency range.

Propp-o-Plast plugs average attenuation is 25dB (A) providing protection for noise situations up to 110dB (A).



Bilson
for your comfort

Bilson

BILSON INTERNATIONAL LIMITED, 47 BELL STREET BMJ
HENLEY-ON-THAMES, OXFORDSHIRE RG9 2AH

Please send me further details: Propp-o-Plast (Disposable ear plug)

Propp (Disposable ear plug) Earrown

Name

Company

Position

Address

Prothiaden

What's the significance of the new 75mg tablet?

Presentation Prothiaden is dothiepin hydrochloride, an antidepressant of the tricyclic group. Prothiaden is available as sugar coated tablets, each containing 75mg of dothiepin hydrochloride. The tablets are red in colour and bear the overprint 'P 75' in white. It is also available in hard gelatin capsules, each containing 25mg of dothiepin hydrochloride. The capsules are red/brown in colour with the overprint 'P25' in white.

Uses Prothiaden is indicated in the treatment of depression and the anxiety frequently associated with depressive illness.

Dosage and Administration Prothiaden should be given in a dosage of 75 to 150mg daily. The following dosage schemes are suggested:

Mild to moderate depression, 25mg three times daily or 75mg at night.
Moderate to severe depression, 150mg daily in divided doses, or as a single dose at night. (If the latter regimen is adopted, it is preferable to use a smaller dose for the first few days).

In certain circumstances, i.e. in hospital use, Prothiaden has been given at dosages up to 225mg daily. No dietary restrictions are necessary during treatment with Prothiaden.

Contra-indications. Warnings, etc. Prothiaden has anticholinergic properties; therefore, it may precipitate urinary retention in susceptible individuals and its use should be avoided in patients with existing or potential urinary retention. Patients with closed-angle glaucoma should not be given Prothiaden and the occurrence of a painful red eye in a patient receiving the drug may indicate acute closed-angle glaucoma; this requires urgent treatment. In patients with chronic simple glaucoma, the risk of Prothiaden causing a rise in intraocular pressure is relatively small provided adequate anti-glaucoma therapy is being used. Caution is advised when treating epileptic patients and those with cardiovascular disorders. From studies in animals, it was concluded that Prothiaden had no teratogenic effects in the species tested. Nevertheless, as with any relatively new drug, the use of Prothiaden during pregnancy should be avoided if possible.

Use with other drugs: Prothiaden should not be given concurrently with MAO inhibitors; nor should it be given within 14 days of ceasing treatment with an MAO inhibitor. Prothiaden may alter the pharmacological effects of some concurrently administered drugs: CNS depressants, including alcohol and narcotic analgesics, will be potentiated, as will the effects of adrenaline and noradrenaline (it should be borne in mind that some local anaesthetic preparations contain these sympathomimetics). The hypotensive effect of certain antihypertensive agents (e.g. bethanidine, debrisoquine, guanethidine) may be reduced.

Side effects. Generally, the side effects associated with Prothiaden have been mild and controlled by reduced dosage. The following have been reported - dryness of mouth, constipation, disturbed accommodation, lassitude, dizziness, orthostatic hypotension, palpitations, somnolence, tremor, headache.

Overdosage: The symptoms of overdosage with Prothiaden may include sedation, dry mouth, blurring of vision, tachycardia, tremor, sweating, nausea, vomiting, confusion. The main dangers from overdosage arise from unconsciousness, convulsions, abnormal cardiac rhythms, hypotension and depression of respiration. The smallest dose of Prothiaden alone which resulted in the death of an adult was reported to be 0.75-1.0g (30 to 40 x 25mg capsules). The largest dose from which recovery took place was reported to be 5.0g (200 x 25mg capsules). In view of the many factors which influence the outcome of an overdose, these figures should not be considered in isolation.

Treatment of overdosage: Gastric lavage; in the unconscious patient or where the cough reflex is depressed, the lungs should be protected by a cuffed endotracheal tube. Repeated gastric/intestinal aspiration may remove drug and metabolites excreted into the gut via the bile. General support of the circulation with continuous ECG monitoring is advised. Abnormalities of cardiac rhythm and epileptic convulsions may occur and should be treated accordingly. Forced diuresis and haemodialysis are not recommended. Bed rest is advisable, even after clinical recovery.

Pharmaceutical Precautions - Recommended storage conditions 5°C to 20°C.

Legal Category POM.

Package Quantities - Prothiaden Tablets (75mg) 100, 500. Prothiaden Capsules (25mg) 100, 600.

Basic NHS Prices: 100 x 25mg £1.57 600 x 25mg £9.03
100 x 75mg £4.52 500 x 75mg £21.70

Product Licence Number Prothiaden capsules PL 0096/5007. Prothiaden Tablets PL 0096/0046.

The Crookes Laboratories Ltd, Basingstoke, Hants.

References: 1. Pearce, J. B. & Linford Rees, W. J., *Int. Med. Res.* 1974, **2**, 12.
2. Rees, J. A. & Cryer, P. C. *Curr. Med. Res. Opin.* 1976, **4**, 416.

Prothiaden 75mg

more effective, better tolerated
treatment for depression and anxiety.

... dothiepin in a single daily dose is better tolerated and produces a greater overall response than a divided dose regimen of amitriptyline.

2

... with dothiepin both the incidence and severity of side-effects were much less than with amitriptyline.

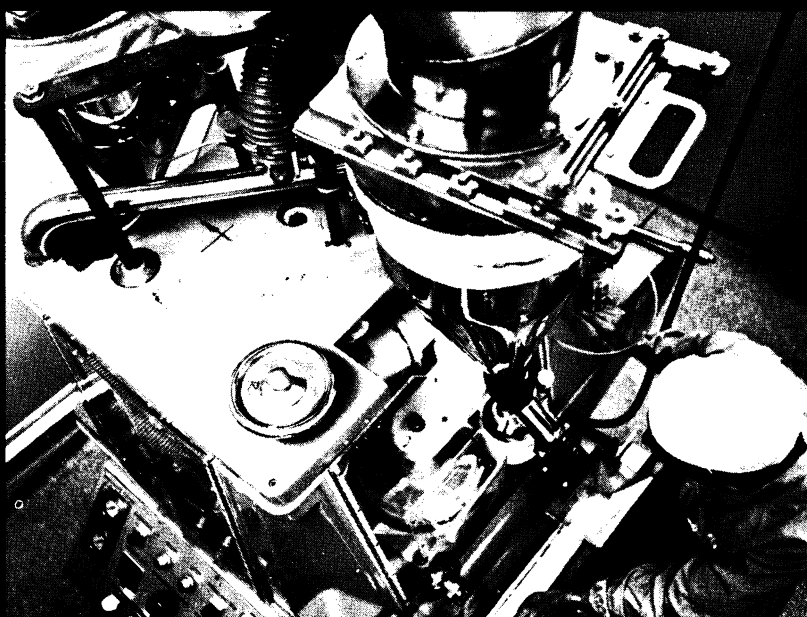
2

... A single daily dose of dothiepin (Prothiaden) has been shown to produce a better clinical response and to be better tolerated than a divided daily dose regimen. 1

DISCOVERY—

In 1929, the pure crystalline digoxin was isolated from *digitalis lanata* by Wellcome research workers.

Digitalis lanata



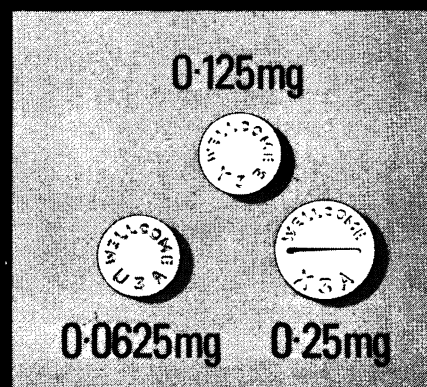
Wellcome production at Dartford, Kent

CONSISTENCY—

Tablet equivalence has been maintained by the highest standards of manufacture.

FLEXIBILITY—

The LANOXIN tablet range (plus the PG Elixir and Injection) offers greater flexibility of dosage.



LANOXIN

TRADE MARK

Wellcome research into practice

Full prescribing information about Lanoxin (digoxin) is available on request.
Wellcome Medical Division, The Wellcome Foundation Ltd., Berkhamsted, Herts



The
inside story
about
Kaomycin
in
the treatment
of diarrhoeas.



Supplied:
Bottles of 150ml and 500ml, each 5ml containing:
Kaolin B.P. 1.03g
Neomycin Sulphate 53mg
REGISTERED TRADEMARK: KAOMYCIN
Full Product information available on request.

UPJOHN LIMITED **Upjohn** CRAWLEY · W. SUSSEX.
UK 5010.1

The security of a trained nurse is as close to you as your telephone.

The British Nursing Association is the largest nursing agency in the U.K.

We can supply a trained B.N.A. nurse. Any time. Anywhere. Day or Night. 7 days a week. On a full-time basis. Or for as little as one hour.

You tell us what you need and when you need it. We do the rest.

All B.N.A. nurses are carefully selected and fully trained. With specialists for any nursing need.

The cost can be surprisingly low. But the quality is always high.

Whether you need us now, or in the future. We'll be waiting at the end of the 'phone.

Why not call or write for details.



British Nursing
Association, 470,
Oxford Street,
London, W1N 0HQ.
Tel: 01-409 1921
or see our local
address in
Yellow Pages.

COUNTY NURSING HOME & CLINIC, BEDFORD

Private nursing with every care and comfort,
at competitive rates

Single or twin-bedded rooms with private bathrooms;
comfortable lounges and dining room.

24-hour medical care by fully qualified staff to the
specified standards of the Area Health Authority.

First-class treatment for post-operative, acute
and chronic medical, orthopaedic, gynaecology and
terminal care patients.

Consultants' and doctors' rooms and facilities, for
surgical, medical and psychiatric consultations.

For colour brochure &
full details, or to see
the facilities
available, contact

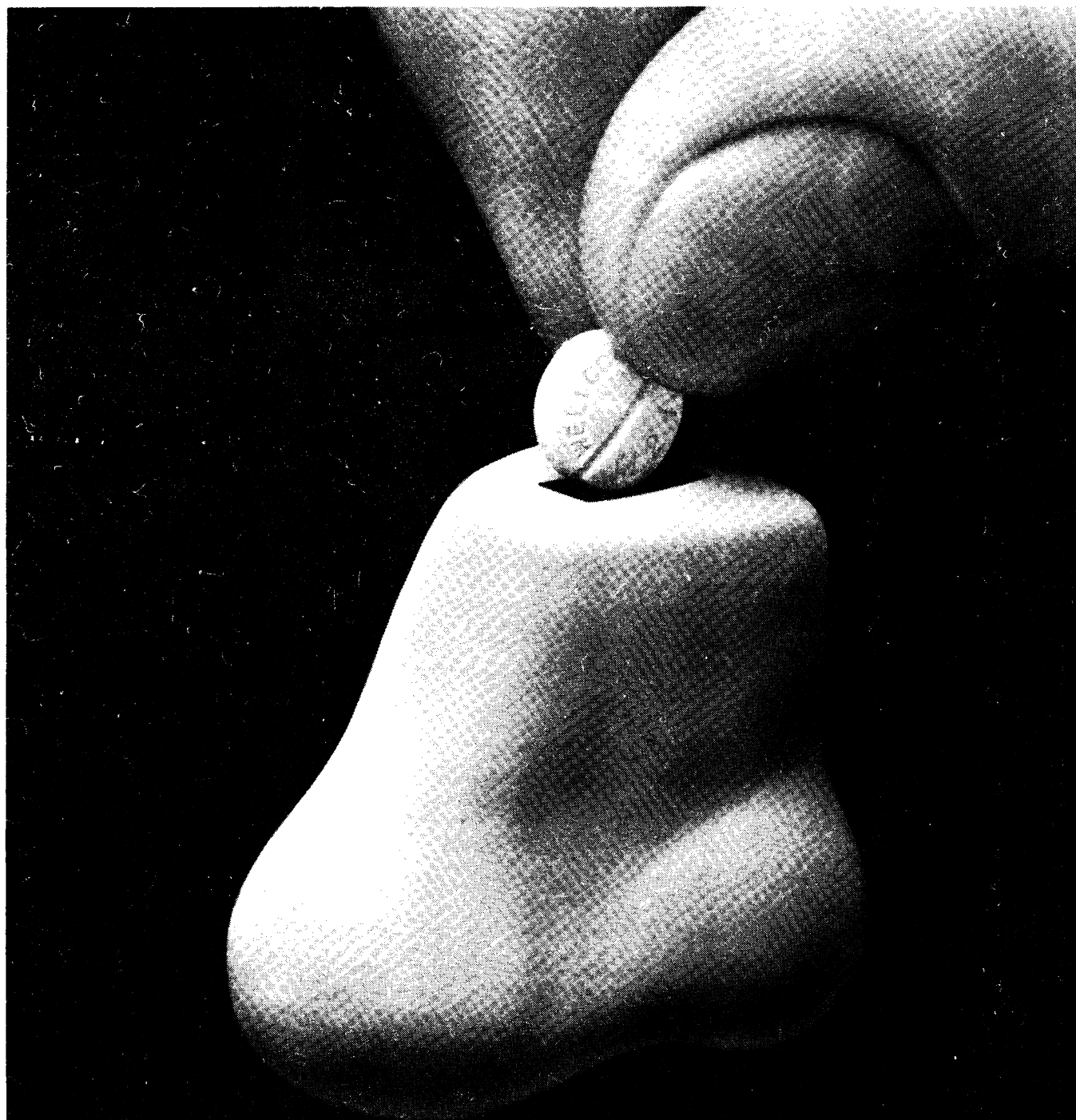
The Matron, Mrs. E. Cochrane,
County Nursing Home & Clinic,
Duckmill Lane, Bedford MK42 0AR
Telephone: Bedford 10234/64430 6

ADVERTISEMENTS

PHARMACEUTICAL PRODUCTS

Readers are reminded that prescribers' literature and clinical information are always available from advertisers on request.

Save a blocked-up nose today



ACTIFED TABLETS

TRADE MARK

Actifed Tablets contain
pseudoephedrine and triprolidine.
Also available in syrup form.



Full prescribing information is available on request.
Wellcome Medical Division
The Wellcome Foundation Ltd., Berkhamsted, Herts



A new service exclusively for members of the B.M.A.

offering Personal Insurance and Finance Facilities.

Special schemes have been arranged with various Insurance Companies, at Lloyds and with Banks offering wider cover or preferential terms for :-

INSURANCE

- * Household and All Risks
- * Personal Accident
- * Motor
- * Legal expenses

FINANCE

- * House and Surgery purchase
- * Personal credit facilities
- * Car purchase

These are special schemes which have been negotiated exclusively for members, by the Medical Insurance Agency, who will undertake administration of them on behalf of the British Medical Association.

Details will be given in a leaflet to be enclosed with next week's issue of British Medical Journal.

The Medical Insurance Agency has a specialised knowledge of Insurance and Finance based on

- 70 years service to the professions
- Over 20 local offices providing a direct personal service
- Over 200 trained and qualified staff
- A continuing commitment to Medical & Dental charities—already in excess of £1 million donated.

Medical Insurance Agency Ltd.,
B.M.A. House, Tavistock Square, London, WC1H 9JD.
Telephone: 01-388 1301

DISCOUNT HOUSES

UP TO 45% DISCOUNT
OFF NEW SEWING & KNITTING MACHINES



We guarantee our prices are lowest in Gt. Britain. We accept Cash Cheque, Barclaycard, Access Card. WE STOCK ALL TOP MAKES.

* Part Exchange welcome * Full After-Sales Service
* Makers' Usual Guarantees * Full Demonstration Facilities * Immediate Free Delivery.

SEWCRAFT SEWING MACHINES

Mail order throughout British Isles. Send for our colour catalogue now to Dept. BMA at our Thames St. branch or phone for Discount quote to 01-748 0808, 01-748 5511, 01-549 3801 or 01-546 5454.

HAMMERSMITH: 150, 150a King St., London, W.6. **KINGSTON:** 34 Thames St., Kingston-on-Thames, Surrey.
Mon-Sat 9 am-5.30 pm Half day Thurs Mon-Sat 9 am-5.30 pm

CARPETS ONLY

As carpet Specialists we are able to allow up to 33% discount on all leading makes of Axminsters, Wiltons, Orientals, etc; Showrooms with stocks and fitting service in most towns throughout Britain. Write or phone for introduction card to visit the showrooms nearest your home or send details for our quotation. Free delivery. Administrative Office, Cordova Carpets, 37 Cross Green, Formby, Nr. Liverpool. Tel: Formby 74839. 167

UP TO 50% DISCOUNT
CARPETS FURNITURE DIVANS

COHAR DISTRIBUTORS LIMITED EST. 1958

Glasgow: Cohar's Glasgow Furnishing Exhibition 25-37 Queen St., 041-221 5064
Edinburgh: 8 Frederick St., 031-225 7324
Aberdeen: 89 Union St., 0224 573359

MAIL ORDER U.K. CARPETS NO CARRIAGE

25%-50% DISCOUNT
PLUS FREE DELIVERY IN UK.
NO EXTRAS!

Bigger Choice. Bigger Savings — Branded Furniture, Beds, Bedding, Carpets, Curtains and Fabrics.

- * Free delivery right to your door. All areas of UK mainland/I.O.W.
- * Postal/Telephone orders welcomed.
- * Personal Service before and after sales.
- * Low Interest credit facilities on discounted prices.
- * All items covered by manufacturers' guarantee.

Write, call or telephone today for free estimates and quotations
Over 30 years of service

SAVE with Bains of Ilford
133 Ilford Lane, Ilford, Essex Tel: 01-553 1011/4

Choose with confidence

Dodson Bull

Discount and Service to members since 1961

CARPETS-FURNITURE-FABRICS
15% TO 33 1/3% DISCOUNT

In the Barbican Furnishing Centre we have a comprehensive range of carpets, furniture and fabrics by all leading manufacturers, on display in room settings. All our showrooms have a wide range of carpets on show in addition Bristol and Manchester have furniture showrooms. All goods can be obtained from any branch. Just discuss your requirements with the manager he will be pleased to help. We maintain substantial stocks for immediate delivery free of charge anywhere in the U.K. Full fitting service for carpets throughout the country.

Credit facilities available

ABERDEEN: 11 Exchange St., AB1 2NH. Tel: 54055/6
BIRMINGHAM: 164 Edmund St., B3 2HB. Tel: 021-236 5862
BOURNEMOUTH: 268 Old Christchurch Rd., BH1 1PH. Tel: 21248
BRIGHTON: 2-5 North Road, BN1 1YA. Tel: 66402
BRISTOL: 2-3 Royal London Hse., Queen Charlotte St., BS1 4EX. Tel: 28857
EXETER: 157 Fore St., EX4 3AT. Tel: 32019
FALMOUTH: 35 Killigrew St., TR11 3PW. Tel: 313555
GLASGOW: 166 Howard St., G1 4HA. Tel: 041-221 3278
IPSWICH: 116-118 St. Helens St., IP4 2LE. Tel: Ipswich 210268/9
LEEDS: 12 Great George St., LS1 3DW. Tel: 41451
MANCHESTER: 55-61 Lever St., M1 1DE. Tel: 061-236 3687/8/9
NEWCASTLE-upon-TYNE: 90-92 Pilgrim St., NE1 6SG. Tel: 20321/21428
WESTCLIFF-on-SEA: 495 London Rd., SS0 9LG. Tel: Southend 46569

Write, phone or call for details to Dept. BMJ

Dodson Bull Ltd

Barbican Furnishing Centre (Opposite Barbican Underground Stn)
100 Aldersgate Street, London EC2Y 8AE Telephone 01 628 7020

Hours: Mon to Fri, 9.00 - 5.30
Sat 9.00 - 5.00 (London only)
BRANCHES CLOSE SATURDAYS at 12.30pm

NOTICE TO ADVERTISERS

Display Advertisements

Applications for advertisement space and for rates should be addressed to the Advertisement Manager, *British Medical Journal*, B.M.A. House, Tavistock Square, London WC1H 9JR. 01-387 4499. Telegrams: Aitiology, London WC1. Telex 265929.

Classified Advertisements

Please write advertisements and name and address clearly in BLOCK CAPITALS and send to the Advertisement Manager, *British Medical Journal*, B.M.A. House, Tavistock Square, London WC1H 9JR. For immediate insertion please enclose cheque in payment and state whether member or non-member. Classified rates for Doctors' advertisements are as follows:

MEMBERS RATE: Minimum charge £2.00 for eighteen words, additional words at the rate of 50p for each six or less. Name and address count word for word. **A Box Number counts as three words, and an additional charge of 40p is made for sorting and forwarding Box Number replies.**

NON-MEMBERS RATE: Minimum charge £3.30 for eighteen words, additional words at the rate of £1.10 for each six or less. Name and address count word for word. **A Box Number counts as three words, and an additional charge of 40p is made for sorting and forwarding Box Number replies.**

APPOINTMENTS: EDUCATIONAL: NOTICES AND HOMES: Minimum charge £2.88 for four lines and 72p for each additional line. **Box Number address counts as one line, and 40p to be added for postage of replies.**

GENERAL AND COMMERCIAL (TRADE): Personal: Accommodation: Nursing: Consulting Rooms: Houses and Property: Travel: Hotels: Nursing: Medical and Secretarial Agencies: Commercial. Minimum charge £3.60 for 18 words including name and address and telephone number. Each additional six words or less £1.20. **Box No's count as three words. Advertisers using a box number should add 40p for postage replies.**

Semi-Display Advertisements

£5.50 per single column cm and pro rata. Full page £550. Half page £275. **Mechanical Data:** Classified: col. length 25.7cm, single col. width 4.4cm, double col. width 9.3cm, 3 col. width 14.2cm, full page width 19.1cm. Minimum depth of semi-display advertisements is three single column centimetres. Complete artwork required for s.c. semi-display advertisements. Printed offset litho.

All classified advertisements, subject to approval, will appear in the forthcoming issue provided they reach this office not later than 10a.m. on the Friday of the week preceding date of issue. Semi-display advertisements must reach this office by 10a.m. on the Tuesday of the week preceding date of issue.

Cancellation and corrections of advertisements must be received before 12 noon on the Friday of the week preceding date of issue (issues affected by public holidays excepted).

It is requested that when stamped addressed envelopes are enclosed in response to advertisements advertisers will ensure that a reply is sent.

Every effort is made to ensure the accuracy of advertisements appearing in the Journal. No recommendation is implied by acceptance, and the Editor of the *British Medical Journal* reserves the right to refuse, discontinue or interrupt the insertion of any advertisement.

NOTICE TO READERS

REPLIES TO BOX NUMBERS. The names and addresses of advertisers under box numbers are held by us in strict confidence and cannot be disclosed. Each Box Number should be addressed separately. Two or more replies can be enclosed in one envelope. The replies will be forwarded to the advertisers in plain envelopes.

NOTICE TO SUBSCRIBERS

United Kingdom and Irish Republic Edition. The annual subscription rates for members of the medical profession who are not members of the B.M.A. is £40.00. Subscriptions can be ordered direct from the Subscription Manager, *British Medical Journal*, B.M.A. House, Tavistock Square, London WC1H 9JR, or through any leading subscription agent or bookseller.

Overseas Edition (not containing classified advertisements). The rate for non-members is US\$56.00 or the equivalent in local currencies, direct from the Subscription Manager. Orders can also be placed through any leading subscription agent or bookseller. Readers in the U.S.A. can send their subscription order with or without payment to: *British Medical Journal*, 1172 Commonwealth Avenue, Boston, Mass. 02134.

Single Copies of issues published in the current year cost 80p in the United Kingdom and Irish Republic and US\$2.00 overseas. Back number prices on application to the Subscription Manager.

Introducing

IC for BIC

Tanderil® Chloramphenicol eye ointment.

An effective non-corticosteroid anti-inflammatory/antibacterial eye preparation indicated for inflammatory conditions of the eye such as:-

Blepharitis



Tanderil® Chloramphenicol eye ointment will relieve the chronic inflammation and treat the primary or secondary bacterial infection.

Trauma



Tanderil® Chloramphenicol eye ointment will soothe the eye, control the inflammatory response and prevent bacterial infection.

Conjunctivitis



Tanderil® Chloramphenicol eye ointment will relieve the inflammation and resolve bacterial infection without enhancing virus replication.

Tanderil® Chloramphenicol eye ointment is available as a white to yellowish white soft ointment containing 10% oxyphenbutazone B.P. and 1% chloramphenicol B.P. as active ingredients and phenyl ethyl alcohol 0.5% as a preservative.

Full prescribing information is available.

Geigy Pharmaceuticals, Macclesfield, Cheshire SK10 2LY Telephone (0625) 21933

Geigy