



New  
from  
Roche

# BACTRIM

## double strength

**CONVENIENT/ECONOMICAL/EFFECTIVE**

The well-proven combination of trimethoprim and sulphamethoxazole (co-trimoxazole) now available in a convenient **one-tablet b.i.d.** form.

**Indications**

Treatment of infections of the respiratory tract, urinary tract, gastro-intestinal tract, skin and soft-tissue.

**Dosage**

Standard adult dosage: 1 Double Strength tablet twice daily.

Minimum dosage (for long-term therapy):

$\frac{1}{2}$  Double Strength tablet twice daily.

Maximum dosage:  $1\frac{1}{2}$  Double Strength tablets twice daily.

**Contra-indications**

Marked liver parenchymal damage or blood dyscrasias, severe renal insufficiency, sulphonamide hypersensitivity, pregnancy, premature and newborn babies.

**Precautions**

Maintain an adequate urinary output. Reduce dosage in renal impairment. Regular blood counts are advisable with long-term therapy. Special caution is required in patients predisposed to folate deficiency.

The usual caution in prescribing any drug for women of childbearing age should be exercised. Both trimethoprim and sulphamethoxazole are excreted in breast milk.

**Side-effects**

Nausea, vomiting, glossitis, skin rashes and blood dyscrasias can occur. Discontinue treatment if a skin rash appears. Elderly patients are more prone to blood dyscrasias. Megaloblastic changes in the bone marrow are reversible with folinic acid.

**Presentation**

Bactrim Roche Double Strength tablets, each containing 160mg trimethoprim and 800mg sulphamethoxazole, in packings of 50.

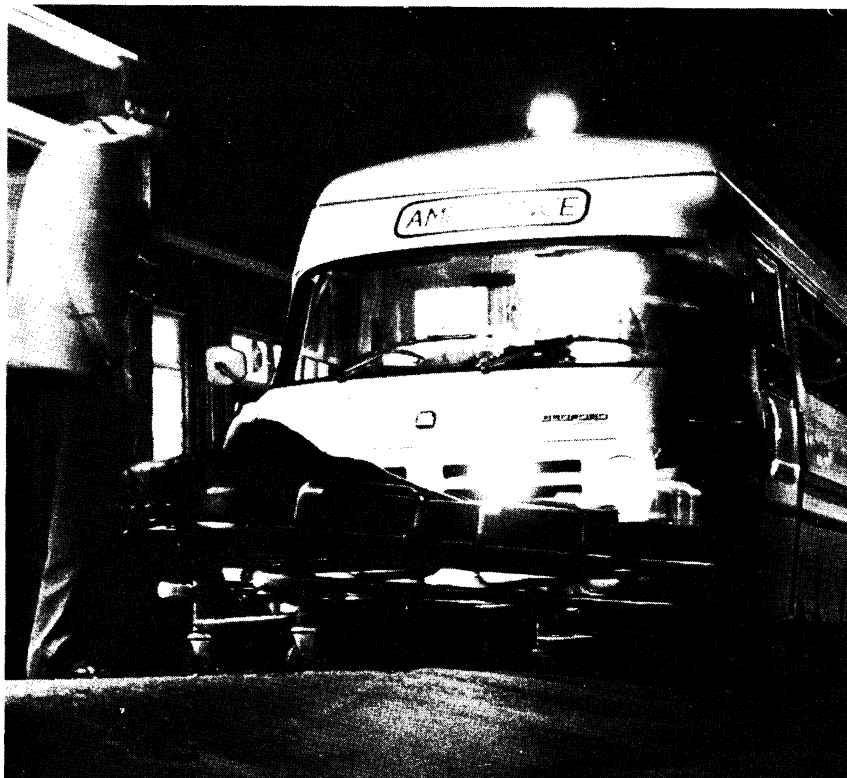
Product licence number: PL 0031/0110

Bactrim Roche is also available as single-strength tablets (dispersible), Drapsules, paediatric tablets, adult suspension and paediatric syrup.



Full prescribing information is available. Roche Products Limited, PO Box 2LE, 15 Manchester Square, London W1A 2LE. Bactrim and Drapsules are trade marks

# EMERGENCY! OVERDOSAGE!



**Medicoal is a convenient new preparation of activated charcoal which effervesces in water to provide a tasteless suspension for oral administration or gastric lavage.**

**The high adsorptive capacity of Medicoal reduces the systemic absorption of most of the drugs used in medicine and of a wide range of plant and inorganic poisons.**

**New product  
Medicoal\***

**Medicoal is of particular value in accidental or deliberate poisoning with compounds such as tricyclic antidepressants, barbiturates and salicylates.**

**Your first move in acute poisoning**

**Lundbeck**

Further information and data sheet available from

Lundbeck Limited, Lundbeck House, Hastings St., Luton LU1 5BE. Telephone: Luton 411482.

\*Trade mark

\*Crome P. et al *The Lancet* (1977) II 1203-1205



# Remembering Henry

Edited by Stephen Lock and Heather Windle

"That the book is worth while is confirmed because so many people of distinction in such varied occupations wished to contribute; he comes through as one of the great characters of mid-twentieth century medicine, but his solid contributions to medicine and the other elements of his career are brought out as well. The readers will enjoy **Remembering Henry**."

Noble, John S., *British Medical Journal*, 1977, 2, 886

"... even readers unlucky enough not to have known Henry Miller or felt his vibrations will gain much from this splendid book. The BMA has produced nothing like it before. I bet they never will again."

Dixon, Bernard, *World Medicine*, 1977, 13, 25

"Anyone who knew or worked with Henry Miller will find the £3 asked for this lament well spent. But so will many others, if only for the enjoyment of attempting to determine from all the clues whether the late vice-chancellor was a self-indulgent, egotistical clown, or a courageous, great-hearted, witty champion of the truth, or a rumbustious and never-to-be repeated conglomerate of all these things and more."

Gould, Donald, *New Scientist*, 1977, 76, 236

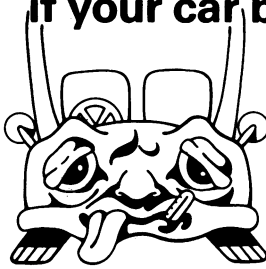
Demy Octavo  
Paperback  
166 pages

ISBN 0 7279 0027 7

Price: Inland £3.00; Overseas US\$7.50, including postage  
(Members of the BMA may purchase this book at the special price of:  
Inland £2.50; Overseas US\$6.25)

**ORDER YOUR COPY NOW**  
From: The Publisher, BRITISH MEDICAL JOURNAL,  
BMA House, Tavistock Square, London WC1H 9JR

## Will your practice stand up if your car breaks down?



**Car Finance  
for Doctors and Dentists**  
Get details of this scheme for Car purchase  
offered to the profession by

**Medical Sickness Finance  
Corporation Limited**  
Company registration number 464750-London

- Minimum deposit
- Maximum period of repayment
- Payments waived on death

For particulars write to us mentioning this  
advertisement at

7-10 Chandos Street, Cavendish Square,  
London W1A 2LN or Telephone: 01-636 1686  
Registered Office



A MEMBER OF THE  
MEDICAL SICKNESS GROUP

## ADVERTISEMENTS

### PHARMACEUTICAL PRODUCTS

Readers are reminded that prescribers' literature and clinical information are always available from advertisers on request.

## CONJOINT ANNUAL GENERAL AND SCIENTIFIC MEETING PROCEEDINGS

British Medical Association  
Irish Medical Association  
Canadian Medical Association

DUBLIN 1976

### CONTENTS

The value of screening procedures in the early detection of disease • Recent advances: Genetic Engineering: Septic shock • Medical audit • Current Developments: Control of Obesity: Thrombo embolic disease: Induction of labour • Doctors at risk • The changing role of the family practitioner • History of Medicine.

Size: 7" x 9½" Paperback 178 pages

**Price: Inland £10.00; Overseas US\$25.00,  
including postage**

**ORDER FROM: BRITISH MEDICAL JOURNAL,  
BMA House, Tavistock Square, London WC1H 9JR**

**PUVA** *is now available  
for private patients at*

**PSORIASIS UVA (Medical Referrals Only) Ltd.,  
2 HARMONT HOUSE.**

**20 HARLEY STREET, London W.1.**

**Telephone 01-580 0875**

*For details please contact  
the Physician-in-Charge.*

### THE RETREAT, YORK for Psychiatric Illnesses

Founded in 1792 by the Quaker, William Tuke, who established the tradition of concern for patients as individuals, The Retreat is a 250-bedded private registered nursing home surrounded by extensive grounds on the outskirts of the historic City of York. It is easily reached by rail and motorways.

Care and treatment is offered for most types of psychiatric illness on the short or long term in a sympathetic and friendly atmosphere. Patients suffering from neuroses, psychoses, alcoholism and dementia are treated in surroundings suitable for their individual needs.

The Nursing Home is a registered charity and is able to offer inclusive care in shared accommodation from £12.65 per day or in single rooms at slightly increased charge. The Nursing Home is recognised by the main private patient schemes.

For further details apply to The Medical Director, The Retreat, York. YO1 5BN (Tel. 0904-54551).

## *Meet your colleagues, entertain your guests, or enjoy a quiet hour on your own* **BMA MEMBERS' DINING ROOM**

Open Monday to Friday 12.30-2.30 pm

*A la carte menu with select wine list at reasonable prices*

*Table reservations through Catering Manager*

**01-387 4499**

### **HASTINGS ROOM**

(Members' Lounge)

Open daily Monday to Friday

Named after Sir Charles Hastings, founder of the BMA, the Hastings Room houses the Roll of Honour containing the names of members who died in the two World Wars; the Book of Valour; and the Roll of Fellows

Morning Coffee  
10.30-11.45 am

Afternoon Tea  
3.00-5.00 pm

Licensed Bar

12 noon-2.30 pm; 5.00-6.00 pm

*Daily papers and writing facilities provided*

### **CHANGING FACILITIES**

Available Monday to Friday for members attending evening functions (or other events). Towels supplied

Reservations through Estates Manager

BMA House is within easy access of central London and within walking distance of Euston, Kings Cross and St Pancras railway stations

**BMA House Tavistock Square London  
WC1H 9JP Tel.: 01-387 4499**



BRITISH MEDICAL JOURNAL, 1 APRIL 1978

Wellcome

RESEARCH IS OUR ONLY SHAREHOLDER

# successful scriptwriting

SEPTRIN—for success 9 times out of 10.

Worldwide clinical studies, involving over 7800 patients with acute and chronic lower respiratory infections, have shown that 91% were successfully treated with SEPTRIN<sup>1</sup>.

SEPTRIN is effective against all the major pathogens, including *H. influenzae* and *Strep. pneumoniae*.

<sup>1</sup>Data on file.

SEPTRIN contains trimethoprim and sulphamethoxazole. Full prescribing information is available on request. Wellcome Medical Division The Wellcome Foundation Ltd., Berkhamsted, Herts

# SEPTRIN A FIRST CHOICE IN CHEST INFECTIONS

TRADE MARK

## DISCOUNT HOUSES

**UP TO 45% DISCOUNT**  
ON NEW SEWING & KITCHEN MACHINES

We guarantee our prices are lowest in Gt. Britain. We accept Cash, Cheque, Barclaycard, Access Card. WE STOCK ALL TOP MAKES.

\* Part Exchange welcome \* Full After-Sales Service \* Makers' Usual Guarantees \* Full Demonstration Facilities \* Immediate Free Delivery.

**SEWCRAFT SEWING MACHINES**

Mail order throughout British Isles. Send for our colour catalogue now to Dept. BMA at our Thames St. branch or phone for Discount quote to 01-748 0808, 01-748 5511, 01-548 3801 or 01-548 5454.

**HAMMERSMITH: 150**      **KINGSTON:**  
150a King St., London, W.8      34 Thames St., Kingston-on-Thames, Surrey  
Mon-Sat 9 am-5.30 pm      Mon-Sat 9 am-5.30 pm  
Half day Thurs      Half day Thurs

## CARPETS ONLY

As carpet Specialists we are able to allow up to 33 1/3% discount on all leading makes of Axminsters, Wiltons, Orientals, etc; Showrooms with stocks and fitting service in most towns throughout Britain. Write or phone for introduction card to visit the showrooms nearest your home or send details for our quotation. Free delivery. Administrative Office, Cordova Carpets, 37 Cross Green, Formby, Nr. Liverpool. Tel: Formby 74839. 167

**AZAT**

**OFFER BEST BARGAINS FOR**

Tropicalised goods, domestic electrical appliances, Radios, T.V.'s for export and Home Sales. Write, visit or telephone to: AZAT (London) Limited, 61 Charlotte St., London W1A 4DN, P.O. Box 4DN.

Telephone: 01 580 4632 (4 lines)  
Telex 22833 AZAT G 167

**UP TO 40% DISCOUNT**

On Carpets, All Makes available, British & Oriental. Fitted carpets are our speciality. We can send you our quotation for any make. FREE Delivery. 25% DISCOUNT. Furniture, Kitchen Units, Beds. CREDIT TERMS AVAILABLE. Call, write or phone G. L. CARPETS & FURNISHERS LTD., 1, St. Stephens Parade, Green Street, London, E.7. Phone 01-472 3219. 167

**UP TO 50% DISCOUNT**

**CARPETS FURNITURE DIVANS**

**COHAR DISTRIBUTORS LIMITED** EST. 1958

Glasgow: Cohar's Glasgow Furnishing Exhibition 25-37 Queen St., 041-221 5064  
Edinburgh: 8 Frederick St., 031-225 7324  
Aberdeen: 89 Union St., 0224 573359

MAIL ORDER U.K. CARPETS NO CARRIAGE

Remember **SIGMA**

**TAX FREE PERSONAL EXPORT**

TROPICALISED FRIDGES, FREEZERS, TVS, COOKERS HI-FI AND VARIOUS OTHER DOMESTIC APPLIANCES

WE PROMISE YOU THE LOWEST PRICE

**SIGMA IMPEX LIMITED**  
1448b LONDON ROAD, LONDON, SW16 4BU  
TEL. 01-679 5321/2

**60% 50% 40% OFF?**

**OUR 25% DISCOUNT** on **ENGAGEMENT RINGS** beats anything! Loose stones & mounts for you to design your own ring. **WEDDING, SIGNET, DRESS & ETERNITY RINGS & JEWELLERY**

\* Repairs & remodelling.  
\* Valuations, ring cleaning

**J & A**

**UP TO 20% DISCOUNT** on **THE BEST RANGE OF BRANDED WATCHES** Also on clocks, cutlery, glass, binoculars, pens, lighters, silver plate, gifts, etc.

**J & A JEWELLERS (Hatton Garden) Ltd.**  
112 Hatton Garden, EC1 01-405 2160  
Mon.-Fri 9.30-5.30 Sat 9.30-1  
Postal enquiries welcome

**25%-50% DISCOUNT**

**PLUS FREE DELIVERY IN UK.**

**NO EXTRAS!**

**Bigger Choice. Bigger Savings — Branded Furniture, Beds, Bedding, Carpets, Curtains and Fabrics.**

- \* Free delivery right to your door. All areas of UK mainland/I.O.W.
- \* Postal/Telephone orders welcomed.
- \* Personal service.
- \* Credit facilities. (Low interest charges).
- \* Big savings on kitchen furniture.
- \* All items covered by manufacturers' guarantee.

Write, call or telephone today for free estimates and quotations. Over 30 years of service

**SAVE with Bains of Ilford**  
133 Ilford Lane, Ilford, Essex Tel 01-478 0280/01-478 4968

Choose with confidence

**Dodson Bull** 

Discount and Service to members since 1961

**CARPETS-FURNITURE-FABRICS 15% TO 33 1/3% DISCOUNT**

In the Barbican Furnishing Centre we have a comprehensive range of carpets, furniture and fabrics by all leading manufacturers, on display in room settings. All our showrooms have a wide range of carpets on show in addition Bristol and Manchester have furniture showrooms. All goods can be obtained from any branch. Just discuss your requirements with the manager — he will be pleased to help. We maintain substantial stocks for immediate delivery free of charge — anywhere in the U.K. Full fitting service for carpets throughout the country.

**Credit facilities available**

**ABERDEEN:** 11 Exchange St., AB1 2NH. Tel: 54055/6  
**BIRMINGHAM:** 164 Edmund St., B3 2HB. Tel: 021-236 5862  
**BOURNMOUTH:** 268 Old Christchurch Rd., BH1 1PH. Tel: 21248  
**BRIGHTON:** 2-5 North Road, BN1 1YA. Tel: 66402  
**BRISTOL:** 2-3 Royal London Hse., Queen Charlotte St., BS1 4EX. Tel: 28857  
**EXETER:** 157 Fore St., EX4 3AT. Tel: 32019  
**FALMOUTH:** 35 Killigrew St., TR11 3PW. Tel: 313555  
**GLASGOW:** 166 Howard St., G1 4HA. Tel: 041-221 3278  
**IPSWICH:** 116-118 St. Helens St., IP4 2LE. Tel: Ipswich 210268/9  
**LEEDS:** 12 Great George St., LS1 3DW. Tel: 41451  
**MANCHESTER:** 55-61 Lever St., M1 1DE. Tel: 061-236 3687/8/9  
**NEWCASTLE-upon-TYNE:** 90-92 Pilgrim St., NE1 6SG. Tel: 20321/21428  
**WESTCLIFF-on-SEA:** 495 London Rd., SS0 9LG. Tel: Southend 46569

Write, phone or call for details to Dept. BMJ

**Dodson Bull Ltd**

Hours: Mon to Fri 9.00-5.30  
Sat 9.00-5.00 (London only)  
BRANCHES CLOSE SATURDAYS at 12.30pm

Barbican Furnishing Centre (Opposite Barbican Underground Stn)  
100 Aldersgate Street, London EC2Y 8AE Telephone: 01 628 7020

**Quality furniture, beds and carpets!**

**LEADING BRANDS AT UNBEATABLE PRICES**

We sell all leading brands. Ordering is easy — just tell us what you want and we'll quote our own low price — backed by our firm price policy. We'll arrange credit and after sales service, too.

Just 'phone write or call in.

**LONDON:** 3 Horn Lane, W3. 01-992 6851.  
**BIRMINGHAM:** 992 Tyburn Road, Pye Hayes. 021-373 4602 and 021-382 7101.  
**KENT:** 31 Pickford Lane, Bexleyheath. 01-303 3787/8465.  
**READING:** 17-19 Chesterman St., (off Southampton St.) Reading. 594203. ALSO: 32 Gould Road, Twickenham.

**Staffords Furnishers**

DELIVERY TO ANY MAINLAND ADDRESS

**BEDLINEN - STAINLESS STEEL TABLEWARE - CRYSTAL 15-25% OFF LIST PRICES**

**SHOWROOMS OPEN 9.30-5.30 MON-SAT**



Leo Laboratories Limited  
Hayes Gate House, Hayes, Middx.

## ANNOUNCING THE FIRST AMIDINO-PENICILLIN

*The introduction of SELEXID\* (mecillinam), the first amidino-penicillin, represents a new chapter in the history of antibiotics.*

*Extensive research by chemists and microbiologists has resulted in the development of SELEXID, the first radically new derivative of 6-APA in a decade.*

*The chemical differences from other beta-lactam antibiotics have far reaching clinical consequences. SELEXID acts in a unique way on the cell wall thus reducing the chance of cross-resistance and often giving synergistic action with the penicillins and cephalosporins.*

*SELEXID exhibits high activity against certain Gram-negative bacteria and in vitro studies have shown it to be up to 40 times more active than ampicillin against E.coli, Klebsiella and Salmonella species.*

*SELEXID is indicated for infections caused by sensitive Gram-negative organisms, in particular, urinary tract infections and Salmonellosis. SELEXID can be advantageously considered for use with those antibiotics where synergism has been demonstrated.*

# SELEXID

A totally new antibiotic



*Presentation:* White film coated tablets containing 200 mg pivmecillinam hydrochloride. *Oral dose:* Range from 200 mg 8 hourly to 400 mg 6 hourly for urinary tract infections and from 1.2-2.4 g daily for salmonellosis. Tablets should be taken with food. *Contra-indications:* Penicillin or cephalosporin hypersensitivity. *Precautions Adverse Reactions:* In accordance with normal practice Selexid should be avoided in the 1st trimester of pregnancy. Dosage may need modification when renal function is impaired. Routine monitoring of liver and renal function advisable with prolonged therapy. Gastro-intestinal upset, rash, and anaphylaxis may occur. Product Licence No. 0043/0048 \*Selexid is a trade mark.