

STATISTICS AT SQUARE ONE

by T. D. V. SWINSCOW

from the British Medical Journal

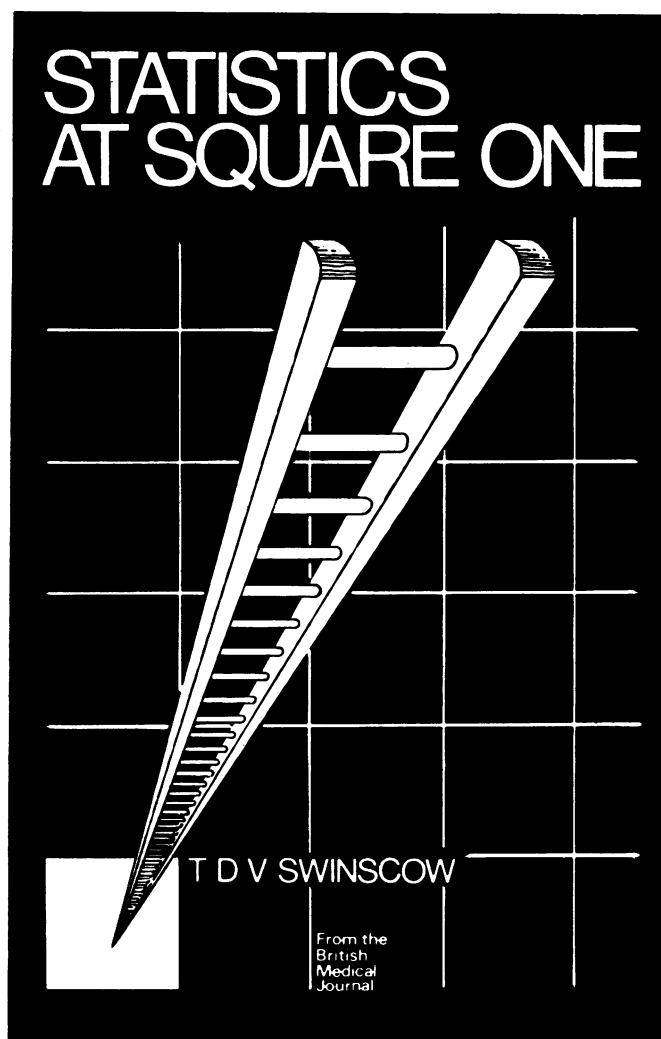
The statistical testing of data is indispensable in many types of medical investigation and a help on countless occasions in clinical practice. This book provides step-by-step instruction. Subjects covered include standard deviation, χ^2 tests, t tests, non-parametric tests and correlation. Methods specially adapted to pocket calculators.

"The ability to put symbols in sequence may well be one of the greatest advances in man's development. . . . This excellent and attractive volume will give you an idea into which category an article or projected article fits. The ink you save may be your own. It is superb value."

O'Donnell, Barry, *British Medical Journal*, 1977, 1, 451.

"... this gem of a practical booklet squeezes the essence of biostatistics into 75 well-written, well-organized pages. Newcomers to the field will like the way obscure concepts are clarified; experts will find the book valuable as a teaching aid."

de Jong, Rudolph H., *J.A.M.A.*, 1977, 237, 1874



Third edition

Revised

Now available

**PRICE: Inland £2.00
Overseas US\$5.00**

Payment must be enclosed with order or a surcharge of 30p will be made for rendering invoices and statements

ORDER YOUR COPY NOW

*From: The Publisher,
British Medical Journal,
BMA House,
Tavistock Square,
London WC1H 9JR*

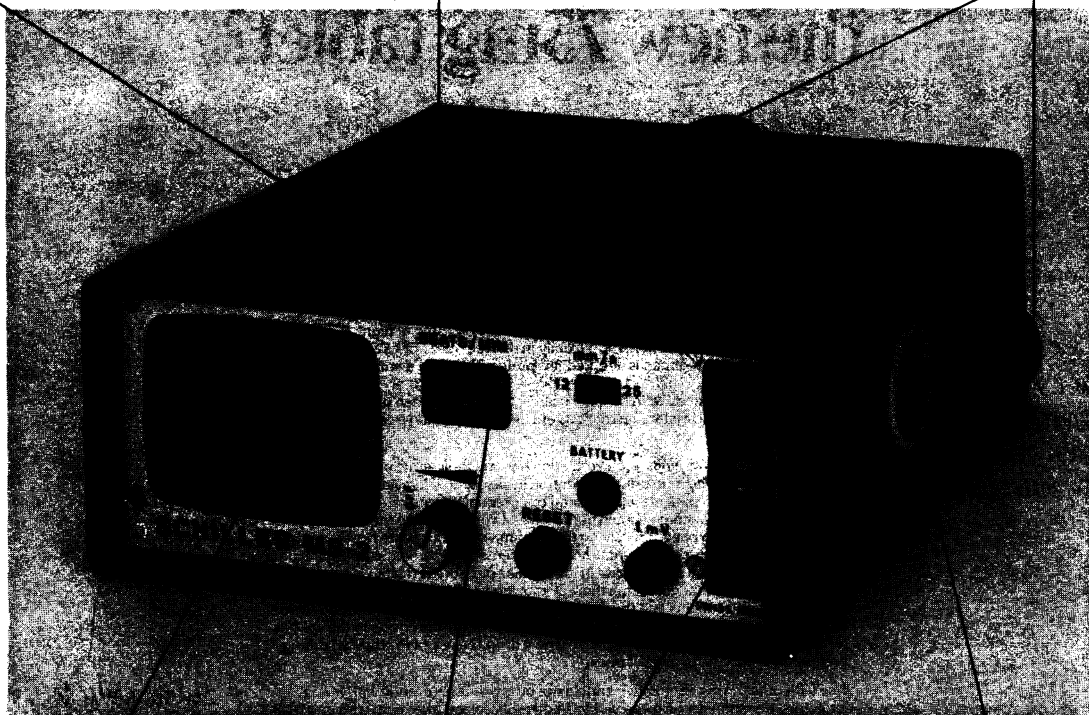
or through any leading bookseller

Due to its ultramodern technology the Miniscope MS-2's outstanding features include unrivalled performance and reliability.

The ideal diagnostic aid in hospitals and physicians' surgeries, for home visits and at accident sites.

650 g, 45 x 110 x 155 mm

Tripod electrode for instant diagnosis.



5-cm screen clearly displays electrocardiogram.

Digital pulse indication. A microprocessor calculates heart rate after each heart beat («Beat by Beat»).

Selector switch for leads I, II, III, aVR, aVL, aVF, V.

Connecting socket for five-core patient's cable.

The new Miniscope MS-2: ECG and Pulse Rate at one Glance and in Seconds

MS-2, the first miniature electrocardioscope with digital heart rate display. «Beat-by-Beat» measurement, i.e., calculation of heart rate per minute after each heart beat, instantly shows

possible rhythm disturbances simultaneously with the electrocardiogram. A high-speed diagnostic instrument of maximum reliability, available at an astonishingly reasonable price.

SCHILLER
Switzerland

CH-6340 Baar/Switzerland
Landhausweg 4E
Phone 042 31 86 14
Telex 65140 sbe ch

Prothiaden

What's the significance of the new 75mg tablet?

Presentation Prothiaden is dothiepin hydrochloride, an antidepressant of the tricyclic group. Prothiaden is available as sugar-coated tablets, each containing 75mg of dothiepin hydrochloride. The tablets are red in colour and bear the overprint 'P 75' in white. It is also available in hard gelatin capsules, each containing 25mg of dothiepin hydrochloride. The capsules are red/brown in colour with the overprint 'P25' in white.

Uses Prothiaden is indicated in the treatment of depression and the anxiety frequently associated with depressive illness.

Dosage and Administration Prothiaden should be given in a dosage of 75 to 150mg daily. The following dosage schemes are suggested:

Mild to moderate depression, 25mg three times daily or 75mg at night.
Moderate to severe depression, 150mg daily in divided doses, or as a single dose at night. (If the latter regimen is adopted, it is preferable to use a smaller dose for the first few days).

In certain circumstances, i.e. in hospital use, Prothiaden has been given at dosages up to 225mg daily. No dietary restrictions are necessary during treatment with Prothiaden.

Contra-indications. Warnings. etc. Prothiaden has anticholinergic properties; therefore, it may precipitate urinary retention in susceptible individuals and its use should be avoided in patients with existing or potential urinary retention. Patients with closed-angle glaucoma should not be given Prothiaden and the occurrence of a painful red eye in a patient receiving the drug may indicate acute closed-angle glaucoma; this requires urgent treatment. In patients with chronic simple glaucoma, the risk of Prothiaden causing a rise in intraocular pressure is relatively small provided adequate anti-glaucoma therapy is being used. Caution is advised when treating epileptic patients and those with cardiovascular disorders. From studies in animals, it was concluded that Prothiaden had no teratogenic effects in the species tested. Nevertheless, as with any relatively new drug, the use of Prothiaden during pregnancy should be avoided if possible.

Use with other drugs: Prothiaden should not be given concurrently with MAO inhibitors; nor should it be given within 14 days of ceasing treatment with an MAO inhibitor. Prothiaden may alter the pharmacological effects of some concurrently administered drugs: CNS depressants, including alcohol and narcotic analgesics, will be potentiated, as will the effects of adrenaline and noradrenaline (it should be borne in mind that some local anaesthetic preparations contain these sympathomimetics). The hypotensive effect of certain antihypertensive agents (e.g. bethanidine, debrisoquine, guanethidine) may be reduced.

Side-effects: Generally, the side-effects associated with Prothiaden have been mild and controlled by reduced dosage. The following have been reported—dryness of mouth, constipation, disturbed accommodation, lassitude, dizziness, orthostatic hypotension, palpitations, somnolence, tremor, headache.

Overdosage: The symptoms of overdosage with Prothiaden may include sedation, dry mouth, blurring of vision, tachycardia, tremor, sweating, nausea, vomiting, confusion. The main dangers from overdosage arise from unconsciousness, convulsions, abnormal cardiac rhythms, hypotension and depression of respiration. The smallest dose of Prothiaden alone which resulted in the death of an adult was reported to be 0.75–1.0g (30 to 40 x 25mg capsules). The largest dose from which recovery took place was reported to be 5.0g (200 x 25mg capsules). In view of the many factors which influence the outcome of an overdose, these figures should not be considered in isolation.

Treatment of overdosage: Gastric lavage; in the unconscious patient or where the cough reflex is depressed, the lungs should be protected by a cuffed endotracheal tube. Repeated gastric/intestinal aspiration may remove drug and metabolites excreted into the gut via the bile. General support of the circulation with continuous ECG monitoring is advised. Abnormalities of cardiac rhythm and epileptic convulsions may occur and should be treated accordingly. Forced diuresis and haemodialysis are not recommended. Bed-rest is advisable, even after clinical recovery.

Pharmaceutical Precautions—Recommended storage conditions 5°C to 20°C.

Legal Category POM.

Package Quantities—Prothiaden Tablets (75mg) 100, 500. Prothiaden Capsules (25mg) 100, 600.

Basic NHS Prices: 100 x 25mg £1.57 600 x 25mg £9.03
100 x 75mg £4.52 500 x 75mg £21.70

Product Licence Number Prothiaden capsules PL 0096/5007. Prothiaden Tablets PL 0096/0046.

The Crookes Laboratories Ltd., Basingstoke, Hants.

References: 1. Pearce, J. B. & Linford Rees, W. J., *Int. Med. Res.* 1974, **2**, 12.
2. Rees, J. A. & Cryer, P. C. *Curr. Med. Res. Opin.* 1976, **4**, 416.

Prothiaden 75mg

more effective, better tolerated
treatment for depression and anxiety.

'...dothiepin in a single daily dose is better tolerated and produces a greater overall response than a divided dose regimen of amitriptyline.' 2

'...with dothiepin both the incidence and severity of side-effects were much less than with amitriptyline.' 2

A single daily dose of dothiepin (Prothiaden) has been shown to produce a better clinical response and to be better tolerated than a divided daily dose regimen. 1

Our application has been accepted. Here's why:

Dermovate Scalp Application
(0.05% w/w clobetasol propionate)
For severe steroid-responsive scalp conditions including psoriasis.

25ml (£1.90*)
Also available in 100ml plastic squeeze bottles.

30ml (£1.19*)
Also available in 100ml plastic squeeze bottles.

Betnovate Scalp Application
The effective treatment for steroid-responsive scalp conditions such as seborrhoeic dermatitis and the inflammation associated with severe dandruff. Gives prompt relief from itching followed by a highly satisfactory clearance of lesions.

Scalp Application
A specially formulated alcohol/water base slightly gelled to spread across the scalp without running down the face or neck. Cooling. Soothing. Saves all the inconvenience of frequent shampoos or massage with messy gels.

leaders in topical steroid therapy

Prescribing information

Dosage and administration Apply sparingly night and morning until improvement occurs. With Betnovate Scalp Application improvement may be sustained by applying once a day or less frequently.

With Dermovate Scalp Application, once control is achieved, therapy should be discontinued. Repeated short courses may be used to control exacerbations. If continuous steroid treatment is necessary, a less potent preparation should be used.

Side effects Betnovate and Dermovate Scalp Applications are usually well tolerated, but if signs of hypersensitivity appear, application should be stopped immediately. With all topical corticosteroids, when extensive areas are treated, sufficient systemic absorption may

occur to produce the features of hypercorticism. This is more likely to occur in infants and children, with occlusion, or when treatment is prolonged. Local atrophy may occur after prolonged treatment under occlusion. Rarely, treatment of psoriasis with corticosteroids (or its withdrawal) is thought to have provoked the pustular form of the disease.

Precautions Care must be taken to keep the preparation away from the eyes. Do not use near a naked flame. In infants and children avoid long term continuous topical therapy where possible, as adrenal suppression can occur even without occlusion. Select the least potent corticosteroid which will control the disease. Topical administration of corticosteroids to pregnant animals can cause foetal abnormali-

ties. The relevance of this finding to humans has not been established; however, topical steroids should not be used extensively in pregnancy, i.e., in large amounts or for prolonged periods. **Contra-indications** Viral and dermatophyte infections of the scalp.

Product Licence numbers
Betnovate Scalp Application: PL/0004/5133
Dermovate Scalp Application: PL/0004/0242

Further information on Betnovate and Dermovate (trade marks) Scalp Applications is available from:
Pharmaceuticals Division
Glaxo Laboratories Ltd
Greenford, Middlesex UB6 0HE

*Basic NHS cost (at time of going to press)





SMITH & NEPHEW PHARMACEUTICALS LTD. RANGE OF OPHTHALMOLOGICAL PRODUCTS

Ganda®

The effective non-toxic therapy for primary and secondary glaucoma. It is available in two strengths:

Ganda 1% 0.5% guanethidine monosulphate B.P. 2% w/v and adrenaline B.P. 1.0% w/v
 Ganda 2% 1.0% guanethidine monosulphate B.P. 5% w/v and adrenaline B.P. 0.5% w/v
 Ganda 3% 1.5% guanethidine monosulphate B.P. 8% w/v and adrenaline B.P. 1% w/v
 P.L. 33/508 P.L. 33/51 Ganda 5-0.5% P.L. 33/510
 Ganda 5-1% P.L. 33/509

Simplene®

For the reduction of intra-ocular pressure in primary and secondary, open angle glaucoma.

Simplene, supplied as a sterile ophthalmic solution of adrenaline B.P. and presented in a 7.5ml plastic dropper bottle is now available in two strengths:

Simplene 0.5% (Adrenaline B.P. 0.5% w/v)
 Simplene 1% (Adrenaline B.P. 1% w/v)
 P.L. 33/507 P.L. 33/508

Sno®pilo

For the treatment of glaucoma.

Sno-pilo, supplied as a sterile ophthalmic solution of pilocarpine hydrochloride B.P. and presented in a 10ml plastic dropper bottle is available in two strengths: 0.2% w/v, 1.0% w/v, 2.0% w/v, 3.0% w/v and 4.0% w/v
 P.L. 33/504-505

Fluorets™

Sterile, individually wrapped paper strips, each impregnated with fluorescein sodium B.P., designed to permit application of fluorescein to the eye without the risk of bacterial contamination and the subsequent development of potentially dangerous infection.
 P.L. 33/5095

Eppy

A 2% solution of adrenaline B.P. and 0.5% solution of pilocarpine B.P. in a 7.5ml glass bottle with separate sterile dropper.
 P.L. 33/5022

Minims

The comprehensive range of single-dose, disposable eye drops.
 P.L. 33/5000-5021, 33/48, 33/50, 33/51

Full prescribing information is available from: SMITH & NEPHEW PHARMACEUTICALS LTD. Welwyn Garden City · Herts · England

The Pathology of Violent Injury

Edited by J. K. Mason
with 24 contributors

This is the first book to attempt to discuss the pathology of violence as an integral part of clinical pathology; in disassociating itself from the courtroom it provides a reference for a wide field of clinicians and hospital pathologists who are increasingly beset by the results of violence.

With the increase of violent crimes and accidents, this is an important reference book for pathologists and surgeons.

400 pages 122 illustrations Cloth £16



Edward Arnold

41 Bedford Square, London WC1B 3DP

Spot the difference.



With Quinoderm the answer is clear. Our Quinoderm hydrocortisone cream is invaluable for the initial treatment of acne lesions – the rapid improvement in appearance is of positive benefit to the patient.

Quinoderm Cream provides logical follow-on treatment. By controlling the condition, it reduces the risk of tissue damage and residual scarring. *Clinical reports indicate that acne responds to Quinoderm.

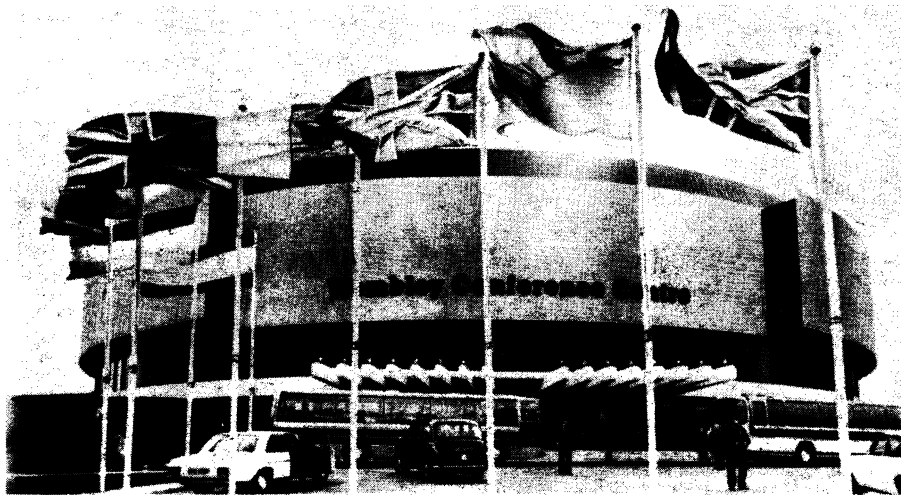
Quinoderm

HITS THE SPOT.

Full prescribing information and clinical reports on request
Quinoderm Ltd, Manchester Road, Oldham OL8 4BR

*The Practitioner Vol 193 p 192
 *The Practitioner Vol 202 p 405
 *The Practitioner Vol 208 p 541

Suddenly, London has a new centre.

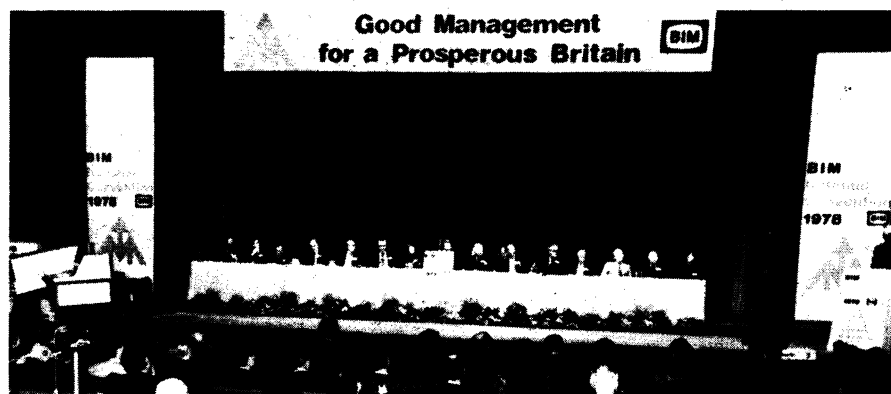


The Wembley Conference Centre; it's more than just a place where people congregate in droves – up to 2,500 of them – to talk about sales figures and marketing plans, review recent research advances, attend fully-staged presentations or discuss matters of great moment in their own particular fields.

They gather in smaller numbers to do all these things, and hold seminars and AGMs, debates and symposia – up to 500 of them in the Avon and Severn Suites, less in the Westminster, Chaucer and Abbey Suites. These facilities are in addition to the 2,500 seat main auditorium, the Centre's focal point, which, with its full projection facilities, its eight-language simultaneous translation capability, its closed circuit TV availability, its proscenium arch and adjustable apron stage, is the most up-to-date, most versatile and most sought after conference venue in Britain. It's equally adept at coping with conferences for, say, 1,000 using the flexible lighting system to black out sections of the hall, or by introducing a classroom style of seating.

But, in the one short year that it has been officially open, the Wembley Conference Centre has also established itself as a lively and responsible cultural and arts centre – in much the

same way as the Arena, the Squash Centre and Stadium that make up the rest of the Wembley Complex have done in the world of sport. Yes, it serves the needs of the local community, but it

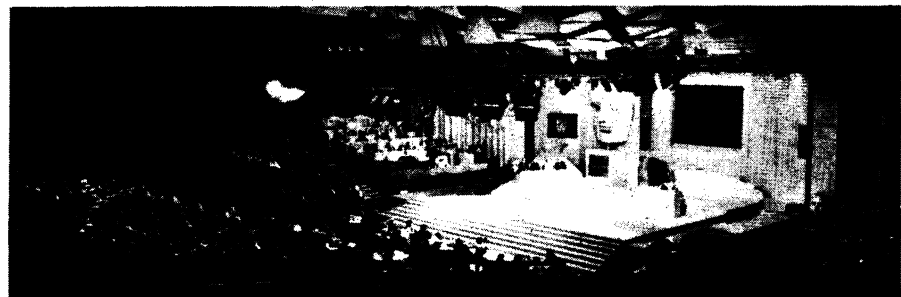


goes much further, too with a continuing programme that has featured such names and diverse attractions as Morcambe & Wise, the Royal Philharmonic Orchestra, David Essex, the Yatran Ukrainian Dance Company, The Spinners, Mary O'Hara, and the Syd Lawrence Orchestra.

This in addition to staging the 1977 Eurovision Song Contest Finals and the British Academy of Film and Television Arts Awards.

All these people have got to be fed, or at least refreshed in the intervals, and the Wembley Conference Centre is fully up to meeting this self-imposed challenge. The four main, large bars can be supplemented at will, while full banqueting facilities can be laid on for up to 2,000 in the exhibition and display areas – as long as there isn't an exhibition on at the time, of course. Any number up to that can be catered for at any level, with menus worked out to meet each organiser's requirements.

For all these reasons, the Wembley Conference Centre can claim to be the new centre of London. But is it in the centre? Well, it's only 20 minutes away down the Westway and there are no parking problems once you get there, either. It's also close on the Underground, and if you want to run a conference, there's a British Rail link that puts Marylebone Station just 10 minutes down the line. That's central. More important, the events that are staged there, and can be staged, are central to Britain's whole commercial, cultural and community life.



Wembley

Conference Centre

If that sounds pretentious, call Bernard Owen or Anne Banford on 01-902 8833, and let them bring you down to earth with the practical potential of the Wembley Conference Centre to further your next conference, exhibition or concert.

To: Bernard Owen, Wembley Conference Centre, Wembley, London, England.
I would like to know more about London's new centre, its facilities, services and availability.

Please send me your brochure ☐

Please telephone me ☐

Please tick

BLOCK LETTERS, PLEASE

Name

Company name

Position in Company

Company address

Town

Country

Telephone No.

DISCOVERY—

In 1929, the pure crystalline digoxin was isolated from *digitalis lanata* by Wellcome research workers.

Digitalis lanata



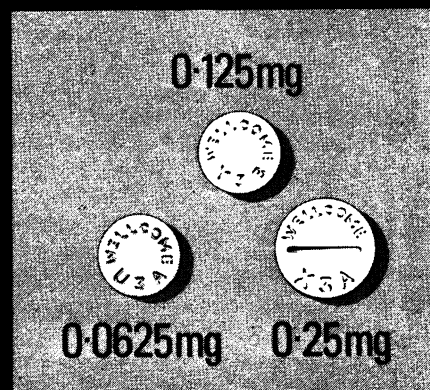
Wellcome production at Dartford, Kent

CONSISTENCY—

Tablet equivalence has been maintained by the highest standards of manufacture.

FLEXIBILITY—

The LANOXIN tablet range (plus the PG Elixir and Injection) offers greater flexibility of dosage.



LANOXIN

TRADE MARK

Wellcome research into practice

Full prescribing information about Lanoxin (digoxin) is available on request.
Wellcome Medical Division, The Wellcome Foundation Ltd., Berkhamsted, Herts



For a beast of a cough



ACTIFED COMPOUND LINCTUS

The cough-stopper for adults and children alike

Actifed* Compound Linctus contains triprolidine hydrochloride, pseudoephedrine hydrochloride, and codeine phosphate in a palatable fruit-flavoured syrup.

*Trade Mark

Full prescribing information is available on request.
Wellcome Medical Division
The Wellcome Foundation Ltd.
Berkhamsted, Herts



Wellcome

The
inside story
about
Kaomycin
in
the treatment
of diarrhoeas.



**Kaomycin
provides
fast
control**

Supplied:
Bottles of 150ml and 500ml, each 5ml containing:
Kaolin B.P. 1.03g
Neomycin Sulphate 53mg
REGISTERED TRADEMARK: KAOMYCIN
Full Product information available on request.

UPJOHN LIMITED **Upjohn** CRAWLEY · W. SUSSEX.
UK 5010.1

**Your 'Mrs Jones'
has a broken leg.
She needs
nursing at home.
Who are you
going to call?**

When one of your private patients needs nursing at home just call on the BNA.

We are the biggest nursing agency in Europe and we have hundreds of fully trained and experienced nurses always on hand.

They are available on a full-time basis or for as little as an hour a day.

We maintain extremely high professional standards and can provide nurses with specialist skills and experience in any kind of nursing.

So, when you have a patient who needs a little help, you can safely recommend the BNA.

If you would like details for your file, just phone or write.



BNA 

British Nursing Association,
470 Oxford Street,
London W1N 0HQ TEL: 01-409 1921
or see local address in Yellow Pages

The Newington Unit

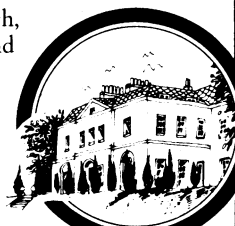
Ticehurst House, Wadhurst, Sussex TN5 7JA

This newly formed Unit aims to help those with alcohol-related disorders and to tackle the underlying problem of dependence.

General medical and psychological measures will be supplemented by an educative approach, both during the initial period of stay and subsequently after discharge.

Further information from the Medical Director of the Unit. Telephone: 0580 200391.

A Nestor Nursing Home



ADVERTISEMENTS

PHARMACEUTICAL PRODUCTS

Readers are reminded that prescribers' literature and clinical information are always available from advertisers on request.

NURSING HOMES

THE RETREAT, YORK

Estab. 1792

Treatment for all forms of psychiatric illness, acute and psychogeriatric. On the outskirts of York, it can be reached easily by rail from London (3 hrs.) and from the motorway.

Inclusive weekly fees from £88.55.

Apply to: J. E. O'N. Gillespie, MD, FRCP, FRCPsych
Medical Director, The Retreat,
York YO1 5BN (Tel: 0904 54551)

199

RALEIGH NURSING HOME

Brixton Hill, London S.W.2.

A new surgical nursing home approved under the Abortion Act 1967. Air conditioned operating suite.

T.O.P. inclusive fee £75

Laparoscopic sterilization £90

Vasectomy £25

Apply Matron 01-671 1541/2 for immediate appointment. 199

BUILT FOR THE BUSY CONSULTANT - ONLY SEVEN MINUTES FROM HARLEY STREET

Two operating theatres for acute and general surgery with full theatre staff on call. Resident Medical Officer: X-ray, physiotherapy, 43 private rooms and children's unit. Contact the Matron or Director for reservations, an appointment to view, or further details. 35 Langham Street London, W1 0F 637 8271

The London Private Hospital

London Nursing Homes

PARKVIEW CLINIC,
87 Mattock Lane, London, W.5 01-507 0102
NEW CROSS NURSING HOME,
415 New Cross Rd., London, S.E.14 01-692 7877
Patients accepted for Termination of Pregnancy - INCLUDING LATE ABORTION.
Vasectomy. (Local Anaesthetic or General Anaesthetic)
Female Sterilisation. (Laparoscopy or Laparotomy)
Please apply to the Resident Medical Officer - 01-567 0102

ROBERT NURSING HOME

162 Station Road, Kings Norton, Birmingham 30

Approved under the Abortion Act 1967.

1st Trimester Terminations. £65 all inclusive fee.

Special DHSS approval for second trimester cases.

Appointments: 021-455 7333 Administration: 021-458 1423

Pountney Cosmetic Clinic

SURGERY AND NURSING HOME

Licensed by the Ealing, Hammersmith and Hounslow Area Health Authority.

Modern Clinic. 4 fully equipped theatres. Local and general anaesthetic. Private or shared rooms with colour T.V.'s.

For further information apply J. D. Read, The Pountney Clinic, 20-26 Staines Road, Hounslow, W. London. Tel: 01-570 9718.

(199)

Sutherland Nursing Home



Medical, convalescent post-operative cases taken, also elderly patients. Short and long term. Fully qualified staff - day and night

Luxurious private and sharing rooms. Lift. Lounge with colour T.V. Excellent food. Lovely gardens. Recognised by BUPA and P.P.P.

For all enquiries apply:
The Resident Matron, S.R.N.,

48-50 Christchurch Avenue, N.W.6. Tel. 01-451 0148 or 01-286 3324

NOTICE TO ADVERTISERS

Display Advertisements

Applications for advertisement space and for rates should be addressed to the Advertisement Manager, *British Medical Journal*, B.M.A. House, Tavistock Square, London WC1H 9JR. 01-387 4499. Telegrams: Aitiology, London WC1. Telex 265929.

Classified Advertisements

Please write advertisements and name and address clearly in BLOCK CAPITALS and send to the Advertisement Manager, *British Medical Journal*, B.M.A. House, Tavistock Square, London WC1H 9JR. For immediate insertion please enclose cheque in payment and state whether member or non-member. Classified rates for Doctors' advertisements are as follows:

MEMBERS RATE: Minimum charge £2.00 for eighteen words, additional words at the rate of 50p for each six or less. Name and address count word for word. A Box Number counts as three words, and an additional charge of 40p is made for sorting and forwarding Box Number replies.

NON-MEMBERS RATE: Minimum charge £3.30 for eighteen words, additional words at the rate of £1.10 for each six or less. Name and address count word for word. A Box Number counts as three words, and an additional charge of 40p is made for sorting and forwarding Box Number replies.

APPOINTMENTS: EDUCATIONAL: NOTICES AND HOMES: Minimum charge £2.88 for four lines and 72p for each additional line. Box Number address counts as one line, and 40p to be added for postage of replies.

GENERAL AND COMMERCIAL (TRADE): Personal: Accommodation: Nursing: Consulting Rooms: Houses and Property: Travel: Hotels: Nursing: Medical and Secretarial Agencies: Commercial. Minimum charge £3.60 for 18 words including name and address and telephone number. Each additional six words or less £1.20. Box No's count as three words. Advertisers using a box number should add 40p for postage replies.

Semi-Display Advertisements

£5.50 per single column cm and pro rata. Full page £550. Half page £275. **Mechanical Data:** Classified: col. length 25.7cm, single col. width 4.4cm, double col. width 9.3cm, 3 col. width 14.2cm, full page width 19.1cm. Minimum depth of semi-display advertisements is three single column centimetres. Complete artwork required for s.c. semi-display advertisements. Printed offset litho.

All classified advertisements, subject to approval, will appear in the forthcoming issue provided they reach this office not later than 10a.m. on the Friday of the week preceding date of issue. Semi-display advertisements must reach this office by 10a.m. on the Tuesday of the week preceding date of issue.

Cancellation and corrections of advertisements must be received before 12 noon on the Friday of the week preceding date of issue (issues affected by public holidays excepted).

It is requested that when stamped addressed envelopes are enclosed in response to advertisements advertisers will ensure that a reply is sent.

Every effort is made to ensure the accuracy of advertisements appearing in the *Journal*. No recommendation is implied by acceptance, and the Editor of the *British Medical Journal* reserves the right to refuse, discontinue or interrupt the insertion of any advertisement.

NOTICE TO READERS

REPLIES TO BOX NUMBERS. The names and addresses of advertisers under box numbers are held by us in strict confidence and cannot be disclosed. Each Box Number should be addressed separately. Two or more replies can be enclosed in one envelope. The replies will be forwarded to the advertisers in plain envelopes.

NOTICE TO SUBSCRIBERS

United Kingdom and Irish Republic Edition. The annual subscription rates for members of the medical profession who are not members of the B.M.A. is £40.00. Subscriptions can be ordered direct from the Subscription Manager, *British Medical Journal*, B.M.A. House, Tavistock Square, London WC1H 9JR, or through any leading subscription agent or bookseller.

Overseas Edition (not containing classified advertisements). The rate for non-members is US\$56.00 or the equivalent in local currencies, direct from the Subscription Manager. Orders can also be placed through any leading subscription agent or bookseller. Readers in the U.S.A. can send their subscription order with or without payment to: *British Medical Journal*, 1172 Commonwealth Avenue, Boston, Mass. 02134.

Single Copies of issues published in the current year cost 80p in the United Kingdom and Irish Republic and US\$2.00 overseas. Back number prices on application to the Subscription Manager.

What the papers say

Shortest Acting

"With doses up to 1 mg, the natriuresis was largely complete within 3 hrs."³
 "It (Burinex) has a short duration of action, being virtually complete in 3 hrs."⁴

Fast Acting

"The rapid absorption from the gastrointestinal tract is reflected in the brisk diuresis established within the hour."¹
 "Its (Burinex Injection) onset of action is within 10 min."²
 "Bumetanide is rapidly absorbed from the gut."³

Clinically Effective

"Fourteen patients showed a good diuretic response on bumetanide where previous treatment with frusemide had proved either unsatisfactory or too slow."⁵
 "An impressive diminution of the signs of pulmonary oedema was seen in most patients and in some the clearance of alveolar oedema was dramatic."⁶

"Based upon our experience with the use of bumetanide in several hundreds of patients and the detailed studies reported above, it may be concluded that this new diuretic agent is a very useful drug in the treatment of congestive cardiac failure."⁷

"Our study... confirms that bumetanide is a potent diuretic effective over a wide dose range and in a variety of clinical conditions."¹

Well tolerated

"Burinex was extremely well tolerated."¹²
 "Bumetanide was well tolerated by patients."¹
 "Overall, bumetanide showed itself to be a safe and effective diuretic when administered to severely ill patients in a busy hospital milieu."⁵

The correct amount of K

"It is known from short-term studies that 1 mg. of bumetanide increases the excretion of potassium by 10-15 mmol daily (Asbury et al, 1972; Olesen et al, 1973; Davies et al, 1974). Two tablets of the combined preparation Burinex K contain 1 mg. of bumetanide and 16 mmol of potassium."⁸

At the correct time

"35% of the potassium chloride is released by one hour, the rest being released over a period of six hours."⁴

The Morning OR Evening diuretic

"The rapid onset and short duration of action of loop diuretics are clearly desirable when a rapid diuresis is indicated, and when given in the evening to patients with chronic heart failure, the short duration of action can ensure a good nights sleep undisturbed by nocturia or breathlessness."⁹

"The use of potent and short-acting diuretics such as bumetanide allow the Physician and patient scope to decide upon the most appropriate time for administration and so reduce major disruptions in the patient's daily routine."¹⁰

"Patients who go out to work may find Burinex K given in the evening more socially acceptable."¹¹

Patients prefer Burinex K

"These results indicate that when long-term diuretic/potassium supplement therapy is required, Burinex K is a more acceptable regimen to the patients than one in which diuretic + Slow K are given separately."¹³

"Patients showed a highly significant preference to take two tablets on one occasion (Burinex K) rather than two different types of tablet on three separate occasions (Lasix + K)."¹⁴

* Burinex is a trade mark

Rx ... But of course the decision is yours.

Burinex K*

Tablets contain 0.5 mg bumetanide with a slow release core of 573 mg (7.7mEq) of potassium chloride.

1. Postgrad. Med. J., 51, 10, (1975)
2. Danish Med. Bull., 21, 63, (1974)
3. Clin. Pharm. Ther., 15, 141, (1974)
4. J. Int. Med. Res., 2, 314, (1974)
5. Brit. J. Clin. Prac., 28, 311, (1974)
6. Brit. J. Clin. Prac., 29, 7, (1975)
7. Postgrad. Med. J., 51, (Suppl. 6), 54, (1975)
8. Brit. J. Clin. Prac. 30, 11-14 (1976)
9. Leading Article, Brit. Med. J., 2, 521, (1975)

10. J. Int. Med. Res., 3, 241, (1975)
11. Postgrad. Med. J., 51, (Suppl. 6), 71, (1975)
12. Acta. Med. Scand., 193, 119, (1973)
13. J. Int. Med. Res., 3, 104, (1975)
14. J. Int. Med. Res., 4, 37-41 (1976)

Full prescribing information available from



Leo Laboratories Limited,
 Hayes Gate House, Hayes, Middx.