

It is only to be expected that the laboratory
discovered 'Indocid' should now be the first
to succeed in improving it.

'Indocid-R' is a new sustained-release
formulation—each 75 mg capsule of which is
equivalent to 25 mg 'Indocid' three times a day.

For many arthritic patients now being treated
with 'Indocid', new 'Indocid-R' offers all the benefits
of their current therapy plus:

Greater comfort, due to sustained, even
control of symptoms.

Convenience, due to simpler dosage regime.

Better long-term control, because of
improved patient compliance.

new INDOCID[®]-R

Sustained-release indomethacin, MSD.

one capsule offers day-long relief.*

*in many patients

BOOKS

The Medical Bookshop has a large stock of Textbooks and new editions on all branches of Medicine, Surgery and their allied subjects

Catalogue post free on request

MEDICAL AND SCIENTIFIC LIBRARY

Annual subscription from £7.00
(Available in the UK only)

(Reduced rates for multiple subscription)

Prospectus post free on request

H. K. LEWIS & CO. LTD.

MEDICAL PUBLISHERS AND BOOKSELLERS

136 GOWER STREET, LONDON WC1E 6BS

PUVA *is now available for private patients at*

PSORIASIS UVA (Medical Referrals Only) Ltd.,
2 HARMONT HOUSE,
20 HARLEY STREET, London W.1.

Telephone 01-580 0875

*For details please contact
the Physician-in-Charge.*

THE RETREAT, YORK for Psychiatric Illnesses

Founded in 1792 by the Quaker, William Tuke, who established the tradition of concern for patients as individuals, The Retreat is a 250-bedded private registered nursing home surrounded by extensive grounds on the outskirts of the historic City of York. It is easily reached by rail and motorways.

Care and treatment is offered for most types of psychiatric illness on the short or long term in a sympathetic and friendly atmosphere. Patients suffering from neuroses, psychoses, alcoholism and dementia are treated in surroundings suitable for their individual needs.

The Nursing Home is a registered charity and is able to offer inclusive care in shared accommodation from £12.65 per day or in single rooms at slightly increased charge. The Nursing Home is recognised by the main private patient schemes.

For further details apply to The Medical Director, The Retreat, York. YO1 5BN (Tel. 0904-54551).

HEINEMANN

CHILDREN LIVING IN LONG STAY HOSPITALS

Maureen Oswin

This book describes the shortcomings in the care given to severely handicapped children but also draws attention to the enormous problems facing the hard-pressed staff and the lack of support given to them. Many practical suggestions for improving the conditions in which multiple handicapped children live are made and the need for a positive attitude emphasised.

A Spastics International Medical Publication

168 pages

£5.00 net

ACUPUNCTURE: THE ANCIENT CHINESE ART OF HEALING —Third Edition

Felix Mann, MB, BChir, LMCC

This book describes the basic principles and laws of acupuncture. Chapter topics include Yin and Yang, the five elements, pulse diagnosis, Qi—the energy of life, preventive medicine, the categories of acupuncture points and statistics. There are 56 drawings and numerous tables.

212 pages

£5.00 net

BRITISH BIRTHS 1970: Volume 2—OBSTETRIC CARE

G Chamberlain, E Philipp, B Howlett and K Masters

The second volume of a unique report of a prospective national study which took place throughout the British Isles. This is an important book for all those concerned with the care of mothers and babies.

308 pages

£12.00 net

THE ILLUSORY FREEDOM

Graham Heath

In this short but carefully documented study, Graham Heath has brought together some of the many factors—medical, psychological, educational and social—which are often ignored by the advocates of the new sexual orthodoxy.

142 pages

£2.95 net

To be published on 29th June

Coming soon . . .

HANDBOOK OF LEPROSY—2nd edition

W H Jopling, FRCP, MRCP, DTM&H

£3.75 net

HEAD AND NECK SURGERY—2nd edition

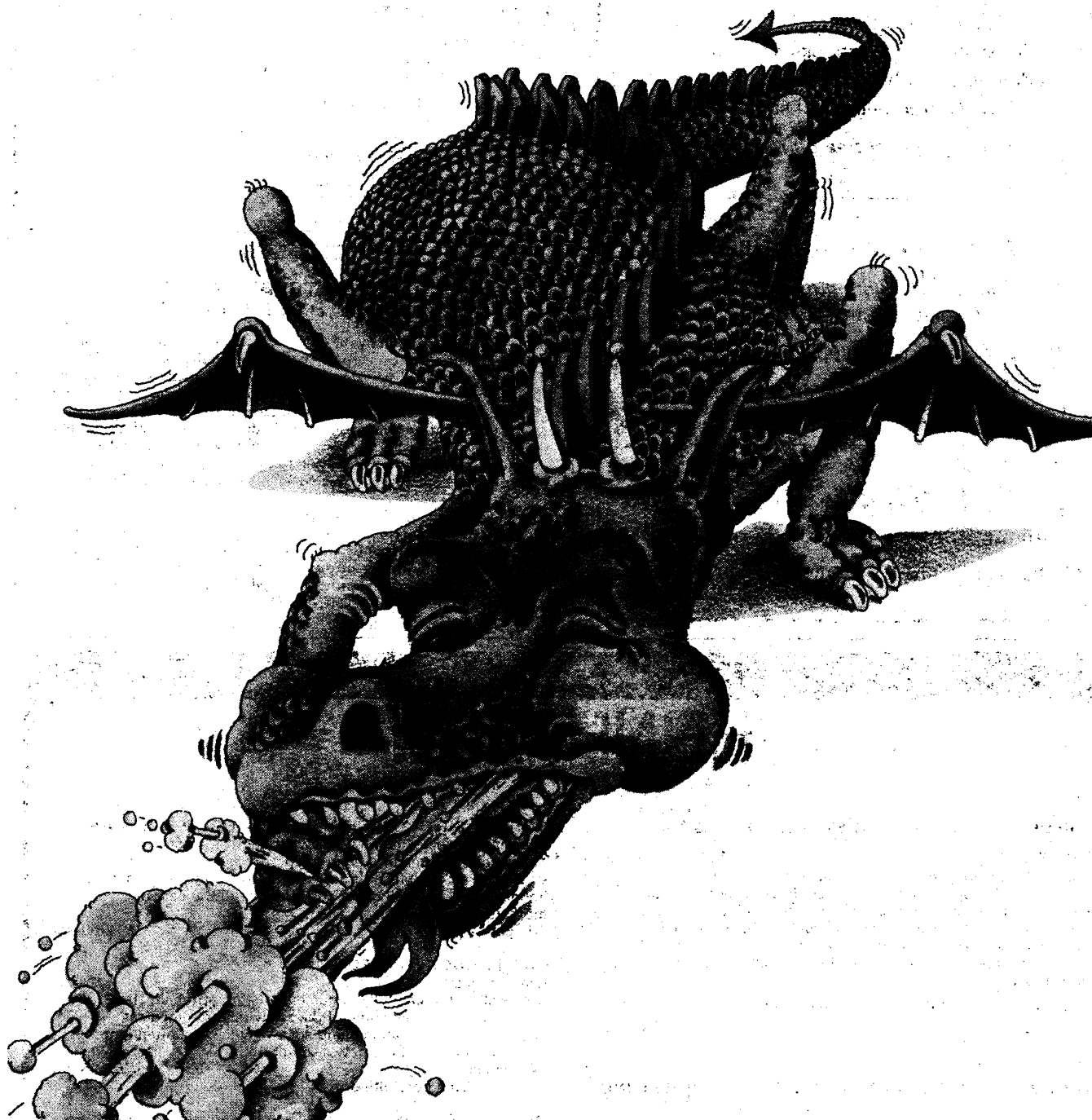
P M Stell, FRCS & A G Maran, MD, FRCS

£10.00 approx



William Heinemann Medical Books Ltd
23 Bedford Square, London WC1B 3HT

For a beast of a cough



ACTIFED COMPOUND LINCTUS

**The cough-stopper for
adults and children alike**

Actifed* Compound Linctus contains triprolidine hydrochloride, pseudoephedrine hydrochloride, and codeine phosphate in a palatable fruit-flavoured syrup.

*Trade Mark

Full prescribing information is available on request.
Wellcome Medical Division
The Wellcome Foundation Ltd.
Berkhamsted, Herts



Wellcome

Prothiaden

What's the significance of the new 75mg tablet?

Presentation Prothiaden is dothiepin hydrochloride, an antidepressant of the tricyclic group. Prothiaden is available as sugar-coated tablets, each containing 75mg of dothiepin hydrochloride. The tablets are red in colour and bear the overprint 'P 75' in white. It is also available in hard gelatin capsules, each containing 25mg of dothiepin hydrochloride. The capsules are red/brown in colour with the overprint 'P25' in white.

Uses Prothiaden is indicated in the treatment of depression and the anxiety frequently associated with depressive illness.

Dosage and Administration Prothiaden should be given in a dosage of 75 to 150mg* daily. The following dosage schemes are suggested:

Mild to moderate depression, 25mg three times daily or 75mg at night.
Moderate to severe depression, 150mg daily in divided doses, or as a single dose at night. (If the latter regimen is adopted, it is preferable to use a smaller dose for the first few days).

*In certain circumstances, i.e. in hospital use, Prothiaden has been given at dosages up to 225mg daily. No dietary restrictions are necessary during treatment with Prothiaden.

Contra-indications. Warnings, etc. Prothiaden has anticholinergic properties; therefore, it may precipitate urinary retention in susceptible individuals and its use should be avoided in patients with existing or potential urinary retention. Patients with closed-angle glaucoma should not be given Prothiaden and the occurrence of a painful red eye in a patient receiving the drug may indicate acute closed-angle glaucoma; this requires urgent treatment. In patients with chronic simple glaucoma, the risk of Prothiaden causing a rise in intraocular pressure is relatively small provided adequate anti-glaucoma therapy is being used. Caution is advised when treating epileptic patients and those with cardiovascular disorders. From studies in animals, it was concluded that Prothiaden had no teratogenic effects in the species tested. Nevertheless, as with any relatively new drug, the use of Prothiaden during pregnancy should be avoided if possible.

Use with other drugs: Prothiaden should not be given concurrently with MAO inhibitors; nor should it be given within 14 days of ceasing treatment with an MAO inhibitor. Prothiaden may alter the pharmacological effects of some concurrently administered drugs: CNS depressants, including alcohol and narcotic analgesics, will be potentiated, as will the effects of adrenaline and noradrenaline (it should be borne in mind that some local anaesthetic preparations contain these sympathomimetics). The hypotensive effect of certain antihypertensive agents (e.g. bethanidine, debrisoquine, guanethidine) may be reduced.

Side-effects: Generally, the side-effects associated with Prothiaden have been mild and controlled by reduced dosage. The following have been reported—dryness of mouth, constipation, disturbed accommodation, lassitude, dizziness, orthostatic hypotension, palpitations, somnolence, tremor, headache.

Overdosage: The symptoms of overdosage with Prothiaden may include sedation, dry mouth, blurring of vision, tachycardia, tremor, sweating, nausea, vomiting, confusion. The main dangers from overdosage arise from unconsciousness, convulsions, abnormal cardiac rhythms, hypotension and depression of respiration. The smallest dose of Prothiaden alone which resulted in the death of an adult was reported to be 0.75–1.0g (30 to 40 x 25mg capsules). The largest dose from which recovery took place was reported to be 5.0g (200 x 25mg capsules). In view of the many factors which influence the outcome of an overdose, these figures should not be considered in isolation.

Treatment of overdosage: Gastric lavage; in the unconscious patient or where the cough reflex is depressed, the lungs should be protected by a cuffed endotracheal tube. Repeated gastric/intestinal aspiration may remove drug and metabolites excreted into the gut via the bile. General support of the circulation with continuous ECG monitoring is advised. Abnormalities of cardiac rhythm and epileptic convulsions may occur and should be treated accordingly. Forced diuresis and haemodialysis are not recommended. Bed-rest is advisable, even after clinical recovery.

Pharmaceutical Precautions—Recommended storage conditions 5°C to 20°C.

Legal Category POM.

Package Quantities—Prothiaden Tablets (75mg) 100, 500. Prothiaden Capsules (25mg) 100, 600.

Basic NHS Prices: 100 x 25mg £1.57 600 x 25mg £9.03
100 x 75mg £4.52 500 x 75mg £21.70

Product Licence Number Prothiaden capsules PL 0096/5007. Prothiaden Tablets PL 0096/0046.

The Crookes Laboratories Ltd., Basingstoke, Hants.



References: 1. Pearce, J. B. & Linford Rees, W. J., *Int. Med. Res.* 1974, **2**, 12.
2. Rees, J. A. & Cryer, P. C. *Curr. Med. Res. Opin.* 1976, **4**, 416.

Prothiaden 75mg

more effective, better tolerated
treatment for depression and anxiety.

'...dothiepin in a single daily dose is better tolerated and produces a greater overall response than a divided dose regimen of amitriptyline.' 2

'...with dothiepin both the incidence and severity of side-effects were much less than with amitriptyline.' 2

A single daily dose of dothiepin (Prothiaden) has been shown to produce a better clinical response and to be better tolerated than a divided daily dose regimen. 1

Caved-S

**heals peptic ulcers
SAFELY**

Caved-S

**heals peptic ulcers
EFFECTIVELY**

Caved-S

**heals peptic ulcers
ECONOMICALLY**

Detailed information is available on request

Tillotts Laboratories, Henlow Trading Estate, Henlow, Beds.

**"The ideal chemotherapeutic agent...
should exhibit selective and effective
antimicrobial activity, and it should
be bactericidal rather than bacteriostatic."**

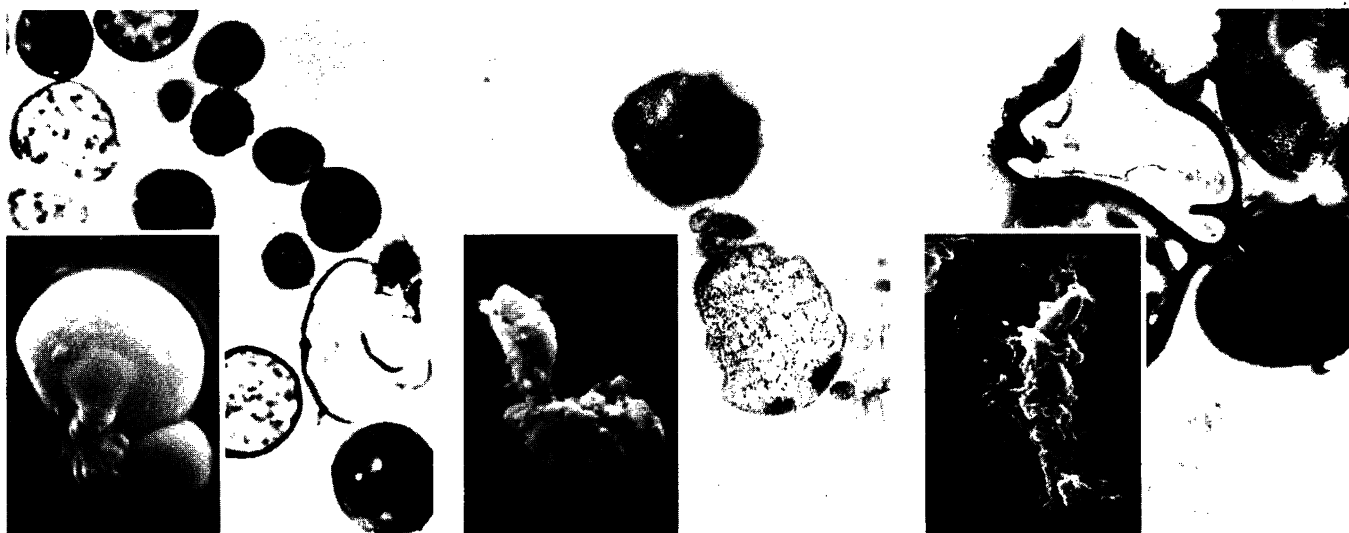
Goodman, L.S. and Gilman, A. (eds) (1975). *The Pharmacological Basis of Therapeutics*, 5th Ed, New York; MacMillan.

in vivo Results

Staphylococcus aureus after 3 days treatment with Erythrocin 500. Intracellular dissolution almost total. Surface defects consistent with protein synthesis inhibition.

After 3 days therapy pneumococcus exhibits marked cellular deformity with secondary cell wall and membrane changes.

Beta-haemolytic streptococcus after 5 days treatment with Erythrocin 500. Dissolution of cellular integrity is almost total and cellular debris can be seen quite clearly.



The Bactericidal Potency of ERYTHROCIN *effective · selective* 500



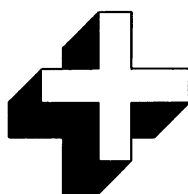
Pictures taken from an *in vivo* co-operative study by Merle Balbirsingh *et al* (in Press)

Full prescribing information on

Erythrocin 500 (Erythromycin Stearate, Abbott) is available on request from Abbott Laboratories Ltd., Queenborough, Kent, ME11 5EL.

EC352

In the treatment of inflammatory polyarthritis and osteoarthritis



Butacote[®]
phenylbutazone B.P.

Butacote, compared with ibuprofen and placebo in the treatment of inflammatory polyarthritis (64 patients) and osteoarthritis (63 patients) proved clearly best for the relief of pain and morning stiffness.¹ Both doctors and patients expressed a clear preference for **Butacote**.

Geigy

1. J. Int. Med. Res. 2, 2, 115-124 (1974) Full prescribing information is available

The active ingredient of Butacote is Phenylbutazone B.P. which is presented as: Sugar-coated, enteric tablets, bi-convex, approximately 7.5mm diameter, pale-violet coloured and imprinted 'Geigy' on one side, each tablet containing 100mg.

Butacote[®] is also available as sugar-coated, enteric tablets, bi-convex, approximately 10.4mm in diameter, pale-violet coloured and imprinted 'Geigy' on one side, each tablet containing 200mg.

Geigy Pharmaceuticals, Macclesfield, Cheshire SK10 2LY. 54 Northumberland Road, Ballsbridge, Dublin.