

# Intal helps asthmatics fight back.



Intal is the unique drug that stops asthmatic attacks before they start.

Taken regularly, every day, it can help asthmatics to lead a normal, active life.

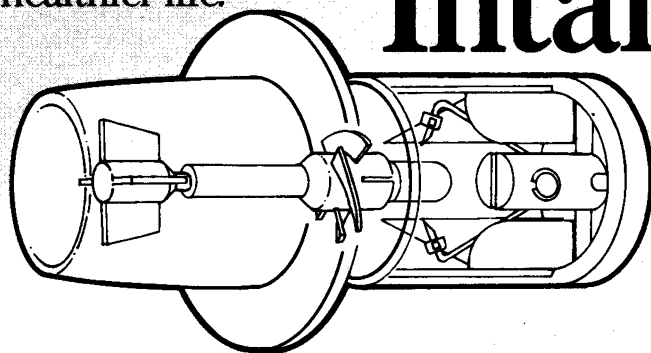
So, they can work as easily and efficiently as anyone.

And play a competitive part in most sports.

There's no fear of the problems associated with steroids and the excessive use of bronchodilators.

With Intal you can give asthmatics a happier, healthier life.

## Intal<sup>®</sup>



Nothing works quite like it.



Leaders in Allergy Research Full prescribing information on Intal (Sodium Cromoglycate B.P.) is available on request from Fisons Ltd., Pharmaceutical Division, Loughborough, Leicestershire LE11 0BB. ©Registered Trade Mark

## ST. ANDREW'S HOSPITAL NORTHAMPTON

### PRIVATE PSYCHIATRIC CARE— A COMPREHENSIVE FACILITY

St. Andrew's aims to provide the best in psychiatric care in a comfortable and relaxed environment. Staffed by eight full-time Consultant Psychiatrists, three Clinical Psychologists and with a full complement of skilled nursing and rehabilitation staff, the hospital offers a broad range of psychiatric treatments. Care is provided on a short, medium and long term basis and the following specific units are available:

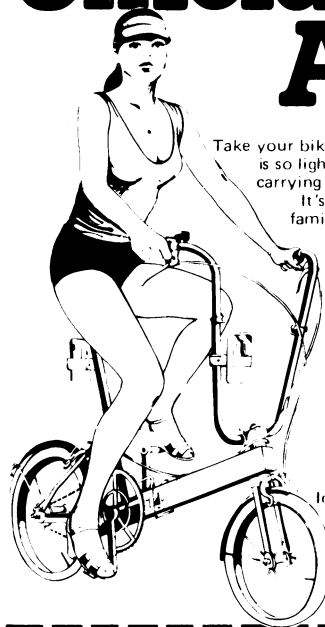
- SHORT TERM ACUTE TREATMENT
- ALCOHOL TREATMENT
- BEHAVIOUR MODIFICATION
- DAY HOSPITAL
- PSYCHOGERIATRIC
- BRAIN DAMAGE AND EPILEPSY INVESTIGATION
- PSYCHOTHERAPY
- MENTAL HANDICAP

Out-patient facilities are available at the hospital, at 148 & 152 Harley Street, London W1, Oxford and Bedford.

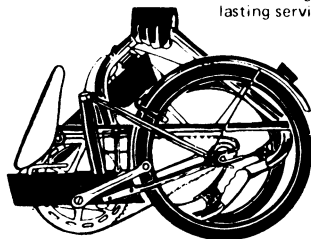
St. Andrew's is an Independent Hospital and subscribers to the main Private Contributory Schemes may claim benefits within the terms of these schemes.

Further details and brochures may be obtained from:  
The Medical Director, St. Andrew's Hospital,  
Northampton (Telephone 0604 — 21311).

# Unfold. And go.



Take your bike with you. The unique Bickerton portable is so light and folds so small that it fits into its own carrying bag and can go with you almost anywhere. It's fully adjustable to suit any member of the family. And we've used the finest materials and components to ensure that it will give lasting service.



Ideal for the car, caravan, boat or aeroplane.  
Single speed 20½ lbs. £119  
Three speed 23 lbs. £129.  
Carrying bag and lights extra.

**BICKERTON** portable

Telephone, or complete the coupon for full details and the name of your nearest Bickerton Dealer.

Name .....

Address .....

Tel: .....

**Vulcan Lighting and Leisure Limited.,**

Dept. BMJ1, Moorsom Street, Birmingham B6 4NX. 021-359 2583.



# Wiley

Now available . . . .

## INVESTIGATIVE & CELL PATHOLOGY

Provides a forum for original papers concerned primarily with the correlation of structure and function in normal and pathological tissues. Within this context, the Journal covers all aspects of investigative pathology and experimental medicine. Original articles concerned with cell biology, embryology and teratology in relation to human disease are encouraged. Contributions concerned with animal models of human disease, new techniques, tumour pathology, iatrogenic and metabolic disease are also included.

Editor: **Professor A. Munro Neville**  
Associate Editor: **Dr. R.L. Carter**

Subscription Details:

Volume 1 (1978) Quarterly £22.50 Elsewhere US \$47.50  
A descriptive leaflet and sample photographs are available on request.

To place your subscription or for further information please write to the Subscription Department at the address below.

Also from Wiley:

## MATHEMATICS, STATISTICS AND SYSTEMS FOR HEALTH

by **N.T.J. Bailey**, Unit of Health Statistical Methodology, World Health Organization.

Primarily concerned to make available to a wide reading public a greater understanding of the role of quantitative methods in helping to develop and improve medical care and health services throughout the world. Special attention is paid to the significance and potentialities of mathematics, statistics, modelling, computers, operational research, systems analysis and system dynamics. (Wiley Series in Probability and Mathematical Statistics — Applied Probability and Statistics Section)

November 1977 232 pages  
0471 99500 2 \$15.90/£7.50

## VIOLENCE AND THE FAMILY

edited by **J.P. Martin**, Department of Sociology & Social Administration, University of Southampton.

Gives a comprehensive review of family violence and examines the reality of family violence in personal, psychological and sociological terms.

April 1978 378 pages  
0471 99576 2 \$26.00/£11.95

## THE EXPERIENCE OF DEPRESSION

by **Dorothy Rowe**, Principal Psychologist, Lincolnshire Area Health Authority.

Offers a new interpretation of depression, as individual prisons of isolation and mental pain which depressed people create through their own language and personal structuring of their worlds. This sympathetic, 'personal constructs' view of depression has important implications for therapy and personal change.

March 1978 292 pages  
0471 99554 1 \$22.75/£10.75

A paper edition is in preparation.

Available from all good booksellers or from Wiley. If you wish to use American Express, Diners Club, Barclaycard or Access, please quote your card and number.

## John Wiley & Sons Limited

Baffins Lane · Chichester · Sussex · England

# TRENDS IN GENERAL PRACTICE 1977

*A collection of essays by Members of  
The Royal College of General Practitioners*

## Contents

Foreword	MICHAEL LINNETT (Chairman of Council of the R.C.G.P.)
Preface	JOHN FRY (General Editor)
Historical Background	IRVINE LOUDON
The Place of Primary Care	JOHN FRY
Patterns of Work	JOHN HOWIE
The Content of Practice	JOHN FRY
Child Care	MARGARET POLLAK
The Elderly	KEITH THOMPSON
Obstetrics	GARETH LLOYD
Fertility and Family Medicine	JOHN McEWAN
Induced Abortion	PETER FRANK
The General Practitioner and the Hospital	IRVINE LOUDON
The Health Team	BARRY REEDY
Premises and Organisation	MICHAEL DRURY
Prescribing	JOHN HOWIE
Education for General Practice	DONALD IRVINE
Future Needs	JOHN FRY

*Demy Octavo*

*Paperback*

*193 Pages*

ISBN 0 7279 0029 3

*Price: Inland £4.50; Overseas US\$11.25, including postage*

(Members of the Royal College of General Practitioners may purchase this book at: Inland £3.50; Overseas US\$8.75)

Payment must be enclosed with order or a surcharge of 30p will be made for rendering invoices and statements

ORDER FROM: The Publisher, BRITISH MEDICAL JOURNAL, BMA House,  
Tavistock Square, London WC1H 9JR, or through any leading bookseller

**A SYNOPSIS OF RHEUMATIC DISEASES, 3rd Edition**D. N. GOLDING, M.A., M.D., F.R.C.P.I.,  
D.PHYS.MED.184 × 121 mm, about 290 pages, 49 illustrations  
0 7236 0487 8 U.K. net price £6.00**JOINT DISEASE: ALL THE ARTHROPATHIES, 3rd Edition**E. C. HUSKISSON, B.SC., M.B., M.R.C.P., and  
F. DUDLEY HART, M.D., F.R.C.P.240 × 146 mm, 176 pages  
0 7236 0465 7 U.K. net price £5.00**ELECTROCARDIOGRAMS, 4th Edition**

M. L. ARMSTRONG, M.B., B.S.

229 × 152 mm, 200 pages, 190 illustrations  
0 7236 0462 2 U.K. net price £3.50**COMMON SURGICAL EMERGENCIES, Revised Reprint**

C. B. WILLIAMS, M.D., F.R.C.S.

182 × 120 mm, 166 pages  
0 7236 0501 7 U.K. net price £2.50**JOHN WRIGHT**

44 Triangle West Bristol BS8 1EX

# Your 'Mrs Jones' has a broken leg. She needs nursing at home. Who are you going to call?

When one of your private patients needs nursing at home just call on the BNA.

We are the biggest nursing agency in Europe and we have hundreds of fully trained and experienced nurses always on hand.

They are available on a full-time basis or for as little as an hour a day.

We maintain extremely high professional standards and can provide nurses with specialist skills and experience in any kind of nursing.

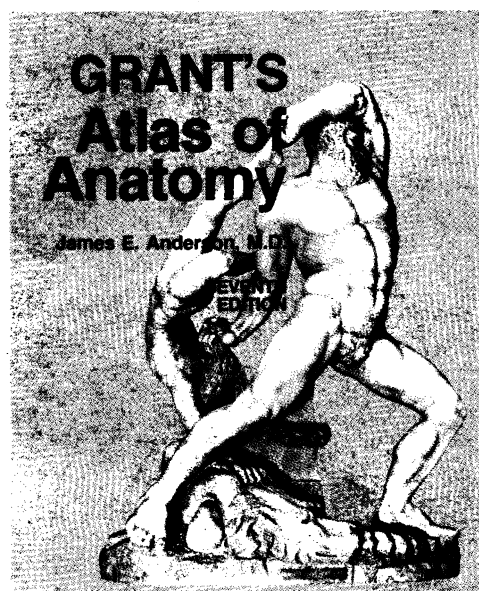
So, when you have a patient who needs a little help, you can safely recommend the BNA.

If you would like details for your file, just 'phone or write.

**BNA** British Nursing Association,  
470 Oxford Street,London W1N 0HQ TEL: 01-409 1921  
or see local address in Yellow Pages

## GRANT'S ATLAS OF ANATOMY SEVENTH EDITION

By James E. Anderson, M.D.

1978/608 Pages/891 Illus.  
(627 in Colour) \$30.00  
ISBN: 683-00209-0

For 35 years and through 6 editions, GRANT'S ATLAS OF ANATOMY has been in continuous use in medical schools all over the world. GRANT'S has become more than a classic textbook. GRANT'S is a tradition.

- Now in 10 sections, each colour coded, and each with its own table of contents
- Now reorganized to follow the normal sequence of dissection
- Now including radiographs and arteriograms to enhance clinical relevance for students
- Now, a completely rewritten text – in more conversational syntax
- Now, new material on the autonomic nervous system – making it more comprehensible to beginning students
- Now, even more generous use of colour throughout. As in previous editions the drawings are made from tracings of actual cadaver sections
- Now, an all new section on foetal anatomy
- And now, printed in a larger typeface for increased readability

**WILLIAMS & WILKINS CO.**European Office: 145A Croydon Road,  
Beckenham, Kent BR3 3RB.



BRITISH MEDICAL JOURNAL, 17 JUNE 1978

**Wellcome**

RESEARCH IS OUR ONLY SHAREHOLDER

# successful scriptwriting

SEPTRIN—for success 9 times out of 10.

Worldwide clinical studies, involving over 7800 patients with acute and chronic lower respiratory infections, have shown that 91% were successfully treated with SEPTRIN!

SEPTRIN is effective against all the major pathogens, including *H. influenzae* and *Strep. pneumoniae*.

<sup>1</sup>Data on file.

SEPTRIN contains trimethoprim and sulphamethoxazole. Full prescribing information is available on request. Wellcome Medical Division The Wellcome Foundation Ltd., Berkhamsted, Herts

# SEPTRIN A FIRST CHOICE IN CHEST INFECTIONS

TRADE MARK

# Prothiaden

## What's the significance of the new 75mg tablet?

**Presentation** Prothiaden is dothiepin hydrochloride, an antidepressant of the tricyclic group. Prothiaden is available as sugar-coated tablets, each containing 75mg of dothiepin hydrochloride. The tablets are red in colour and bear the overprint 'P 75' in white. It is also available in hard gelatin capsules, each containing 25mg of dothiepin hydrochloride. The capsules are red/brown in colour with the overprint 'P25' in white.

**Uses** Prothiaden is indicated in the treatment of depression and the anxiety frequently associated with depressive illness.

**Dosage and Administration** Prothiaden should be given in a dosage of 75 to 150mg daily. The following dosage schemes are suggested:

Mild to moderate depression, 25mg three times daily or 75mg at night. Moderate to severe depression, 150mg daily in divided doses, or as a single dose at night. (If the latter regimen is adopted, it is preferable to use a smaller dose for the first few days).

In certain circumstances, i.e. in hospital use, Prothiaden has been given at dosages up to 225mg daily. No dietary restrictions are necessary during treatment with Prothiaden.

**Contra-indications. Warnings. etc.** Prothiaden has anticholinergic properties; therefore, it may precipitate urinary retention in susceptible individuals and its use should be avoided in patients with existing or potential urinary retention. Patients with closed-angle glaucoma should not be given Prothiaden and the occurrence of a painful red eye in a patient receiving the drug may indicate acute closed-angle glaucoma; this requires urgent treatment. In patients with chronic simple glaucoma, the risk of Prothiaden causing a rise in intraocular pressure is relatively small provided adequate anti-glaucoma therapy is being used. Caution is advised when treating epileptic patients and those with cardiovascular disorders. From studies in animals, it was concluded that Prothiaden had no teratogenic effects in the species tested. Nevertheless, as with any relatively new drug, the use of Prothiaden during pregnancy should be avoided if possible.

**Use with other drugs:** Prothiaden should not be given concurrently with MAO inhibitors; nor should it be given within 14 days of ceasing treatment with an MAO inhibitor. Prothiaden may alter the pharmacological effects of some concurrently administered drugs: CNS depressants, including alcohol and narcotic analgesics, will be potentiated, as will the effects of adrenaline and noradrenaline (it should be borne in mind that some local anaesthetic preparations contain these sympathomimetics). The hypotensive effect of certain antihypertensive agents (e.g. bethanidine, debrisoquine, guanethidine) may be reduced.

**Side-effects:** Generally, the side-effects associated with Prothiaden have been mild and controlled by reduced dosage. The following have been reported—dryness of mouth, constipation, disturbed accommodation, lassitude, dizziness, orthostatic hypotension, palpitations, somnolence, tremor, headache.

**Overdosage:** The symptoms of overdosage with Prothiaden may include sedation, dry mouth, blurring of vision, tachycardia, tremor, sweating, nausea, vomiting, confusion. The main dangers from overdosage arise from unconsciousness, convulsions, abnormal cardiac rhythms, hypotension and depression of respiration. The smallest dose of Prothiaden alone which resulted in the death of an adult was reported to be 0.75–1.0g (30 to 40 x 25mg capsules). The largest dose from which recovery took place was reported to be 5.0g (200 x 25mg capsules). In view of the many factors which influence the outcome of an overdose, these figures should not be considered in isolation.

**Treatment of overdosage:** Gastric lavage; in the unconscious patient or where the cough reflex is depressed, the lungs should be protected by a cuffed endotracheal tube. Repeated gastric/intestinal aspiration may remove drug and metabolites excreted into the gut via the bile. General support of the circulation with continuous ECG monitoring is advised. Abnormalities of cardiac rhythm and epileptic convulsions may occur and should be treated accordingly. Forced diuresis and haemodialysis are not recommended. Bed-rest is advisable, even after clinical recovery.

**Pharmaceutical Precautions**—Recommended storage conditions 5°C to 20°C.

**Legal Category** POM.

**Package Quantities**—Prothiaden Tablets (75mg) 100, 500. Prothiaden Capsules (25mg) 100, 600.

**Basic NHS Prices:** 100 x 25mg £1.57    600 x 25mg £9.03  
100 x 75mg £4.52    500 x 75mg £21.70

**Product Licence Number** Prothiaden capsules PL 0096/5007. Prothiaden Tablets PL 0096/0046.

The Crookes Laboratories Ltd., Basingstoke, Hants.



**References:** 1. Pearce, J. B. & Linford Rees, W. J., *Int. Med. Res.* 1974, **2**, 12.  
2. Rees, J. A. & Cryer, P. C. *Curr. Med. Res. Opin.* 1976, **4**, 416.

'... dothiepin in a single daily dose is better tolerated and produces a greater overall response than a divided dose regimen of amitriptyline.' 2

'... with dothiepin both the incidence and severity of side-effects were much less than with amitriptyline.' 2

A single daily dose of dothiepin (Prothiaden) has been shown to produce a better clinical response and to be better tolerated than a divided daily dose regimen. 1

# Prothiaden 75mg

more effective, better tolerated  
treatment for depression and anxiety.

**DISCOVERY—**

In 1929, the pure crystalline digoxin was isolated from *digitalis lanata* by Wellcome research workers.

*Digitalis lanata*



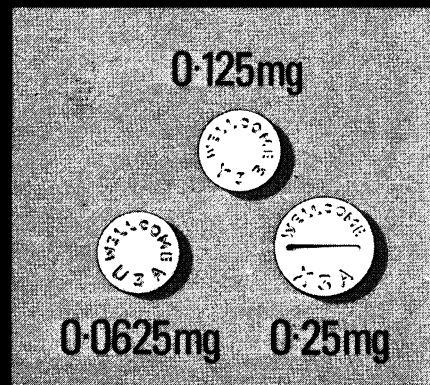
Wellcome production at Dartford, Kent

**CONSISTENCY—**

Tablet equivalence has been maintained by the highest standards of manufacture.

**FLEXIBILITY—**

The LANOXIN tablet range (plus the PG Elixir and Injection) offers greater flexibility of dosage.



# LANOXIN

TRADE MARK

## Wellcome research into practice

Full prescribing information about Lanoxin (digoxin) is available on request.  
Wellcome Medical Division, The Wellcome Foundation Ltd., Berkhamsted, Herts







## DOCTOR AT SEA.

As a qualified doctor you can join the Royal Navy on a 5-year Short Career Commission.

You will have the opportunity of serving in ships, in submarines, or with the Royal Marines Commandos, and in a wide variety of Naval Establishments.

Career counselling will help you plan your future.

There are opportunities for approved General and Higher Professional Training in preparation for careers in general practice and the hospital disciplines. Similar opportunities also exist for training in Naval Occupational and Community Medicine which includes aviation, underwater, submarine, nuclear, preventive and industrial medicine.

If you join immediately after registration your salary will be £6,517 as a Surgeon Lieutenant.

You can, however, join at any age up to 39 when your professional experience is taken into account and you could join as a Surgeon Lieutenant Commander earning £8,258 a year.

There is extra pay for certain recognised post-graduate qualifications and for Specialist and Consultant status.

There is a generous Boarding School Allowance for your children.

If you leave at the end of your 5-year Commission you will receive a tax-free gratuity. You may prefer to apply for extension to eight years or transfer to a pensionable Medium or Full Career Commission.

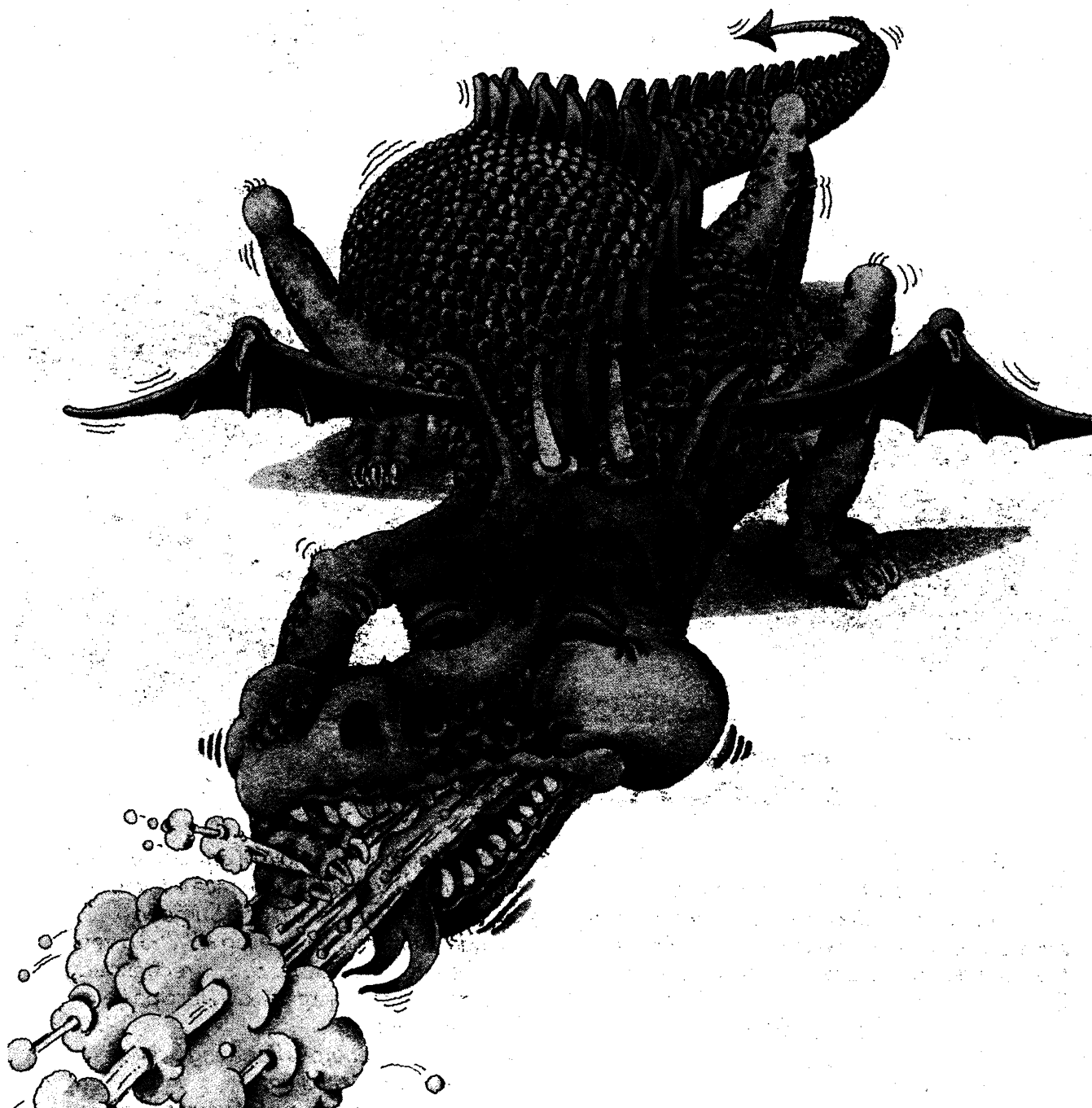
For more information write to: Surgeon Commander D.J. McKay, LM, LS, MRCP, RN, (724MO 4), Medical Directorate General (Naval), Ministry of Defence, Empress State Building, London SW6 1TR.



### ROYAL NAVY MEDICAL OFFICER



# For a beast of a cough



## ACTIFED COMPOUND LINCTUS

**The cough-stopper for  
adults and children alike**

Actifed\* Compound Linctus contains triprolidine hydrochloride, pseudoephedrine hydrochloride, and codeine phosphate in a palatable fruit-flavoured syrup.

\*Trade Mark  
Full prescribing information is available on request.  
Wellcome Medical Division  
The Wellcome Foundation Ltd.  
Berkhamsted, Herts



**Wellcome**

# Every cloud had a silver lining



Despite hard times they looked on the bright side in those days. It was easier then. They were young. And nothing's ever too bad with youth and health on your side. Now they're older and the future doesn't seem quite so rosy. They're two of the many elderly people in Britain who suffer from urinary frequency and incontinence. They feel shame and embarrassment and they find it hard to look on the bright side when their dignity is threatened. Surely, they deserve something better than this? Cetiprin can help.

At a dosage of 200 mg tds Cetiprin exerts a specific antispasmodic activity on the bladder, delaying the urge to urinate and increasing bladder capacity to an acceptable level for the patient's age.

## Cetiprin 200 mg t.d.s. persuades the bladder to wait

**Cetiprin** (emepronium bromide) **Presentation** Cetiprin 200 mg tablets are white, coated and slightly bulged tablets of 11 mm diameter, scored and engraved with the letters CP. Each tablet contains 200 mg emepronium bromide. **Indications** 1. Urinary frequency and severe incontinence in old people. 2. Nocturnal frequency. 3. After bladder surgery, prostatectomy or bladder radiotherapy. **Dosage and Administration** Route of administration: by mouth, followed by a glass of water. **Recommended dosage** (a) Urinary frequency and severe incontinence in old people: 200 mg three times daily in most cases. (b) Nocturnal frequency and urgency incontinence: 200 mg — 400 mg at bedtime. (c) After bladder surgery, prostatectomy or bladder radiotherapy: 200 mg three times daily in most cases. **Side effects** Rarely, dryness of the mouth. NB Ulceration of the gums and mouth has been reported, particularly in geriatric patients who hold the tablets in their mouths for long periods. There have also been instances of oesophageal ulceration and stricture when the tablets have not been swallowed with an adequate amount of fluid. **Contra-indications and Precautions** Whilst emepronium bromide is indicated in the early stages of prostatic enlargement with urinary frequency, it is contra-indicated in later stages with flaccid bladder and large amounts of residual urine. Caution should be observed in patients with glaucoma or gastric retention. **PL 0022/5900 Product Licensee** KabiVitrum Ltd, Bilton House, Uxbridge Road, Ealing, London W5 2TH Telephone: 01-567 4717 and 01-579 1871 **Basic NHS Price** 18p daily. \*

\* Trademark

# What the papers say

## Shortest Acting

"With doses up to 1 mg, the natriuresis was largely complete within 3 hrs."<sup>3</sup>  
 "It (Burinex) has a short duration of action, being virtually complete in 3 hrs."<sup>4</sup>

## Fast Acting

"The rapid absorption from the gastrointestinal tract is reflected in the brisk diuresis established within the hour."<sup>1</sup>  
 "Its (Burinex Injection) onset of action is within 10 min."<sup>2</sup>  
 "Bumetanide is rapidly absorbed from the gut."<sup>3</sup>

## Clinically Effective

"Fourteen patients showed a good diuretic response on bumetanide where previous treatment with frusemide had proved either unsatisfactory or too slow."<sup>5</sup>  
 "An impressive diminution of the signs of pulmonary oedema was seen in most patients and in some the clearance of alveolar oedema was dramatic."<sup>6</sup>

"Based upon our experience with the use of bumetanide in several hundreds of patients and the detailed studies reported above, it may be concluded that this new diuretic agent is a very useful drug in the treatment of congestive cardiac failure."<sup>7</sup>

"Our study... confirms that bumetanide is a potent diuretic effective over a wide dose range and in a variety of clinical conditions."<sup>1</sup>

## Well tolerated

"Burinex was extremely well tolerated."<sup>12</sup>  
 "Bumetanide was well tolerated by patients."<sup>1</sup>  
 "Overall, bumetanide showed itself to be a safe and effective diuretic when administered to severely ill patients in a busy hospital milieu."<sup>5</sup>

## The correct amount of K

"It is known from short-term studies that 1 mg. of bumetanide increases the excretion of potassium by 10-15 mmol daily (Asbury et al, 1972; Olesen et al, 1973; Davies et al, 1974). Two tablets of the combined preparation Burinex K contain 1 mg. of bumetanide and 16 mmol of potassium."<sup>8</sup>

## At the correct time

"35% of the potassium chloride is released by one hour, the rest being released over a period of six hours."<sup>4</sup>

## The Morning OR Evening diuretic

"The rapid onset and short duration of action of loop diuretics are clearly desirable when a rapid diuresis is indicated, and when given in the evening to patients with chronic heart failure, the short duration of action can ensure a good nights sleep undisturbed by nocturia or breathlessness."<sup>9</sup>

"The use of potent and short-acting diuretics such as bumetanide allow the Physician and patient scope to decide upon the most appropriate time for administration and so reduce major disruptions in the patient's daily routine."<sup>10</sup>

"Patients who go out to work may find Burinex K given in the evening more socially acceptable."<sup>11</sup>

## Patients prefer Burinex K

"These results indicate that when long-term diuretic/potassium supplement therapy is required, Burinex K is a more acceptable regimen to the patients than one in which diuretic + Slow K are given separately."<sup>13</sup>

"Patients showed a highly significant preference to take two tablets on one occasion (Burinex K) rather than two different types of tablet on three separate occasions (Lasix + K)."<sup>14</sup>

\* Burinex is a trade mark

Rx ... But of course the decision is yours.

# Burinex K\*

Tablets contain 0.5 mg bumetanide with a slow release core of 573 mg (7.7mEq) of potassium chloride.

1. Postgrad. Med. J., 51, 10, (1975)
2. Danish Med. Bull., 21, 63, (1974)
3. Clin. Pharm. Ther., 15, 141, (1974)
4. J. Int. Med. Res., 2, 314, (1974)
5. Brit. J. Clin. Prac., 28, 311, (1974)
6. Brit. J. Clin. Prac., 29, 7, (1975)
7. Postgrad. Med. J., 51, (Suppl. 6), 54, (1975)
8. Brit. J. Clin. Prac. 30, 11-14 (1976)
9. Leading Article, Brit. Med. J., 2, 521, (1975)

10. J. Int. Med. Res., 3, 241, (1975)
11. Postgrad. Med. J., 51, (Suppl. 6), 71, (1975)
12. Acta. Med. Scand., 193, 119, (1973)
13. J. Int. Med. Res., 3, 104, (1975)
14. J. Int. Med. Res., 4, 37-41 (1976)

Full prescribing information available from



Leo Laboratories Limited,  
 Hayes Gate House, Hayes, Middx.