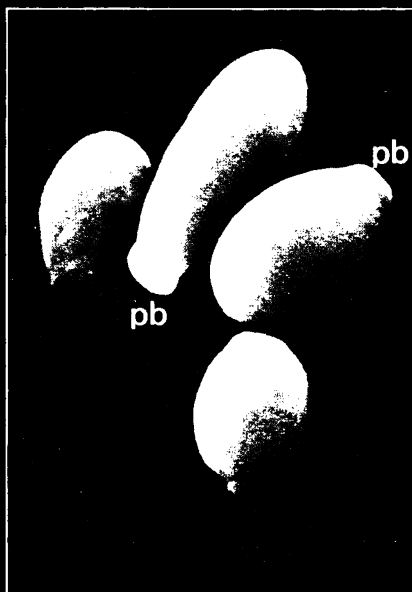
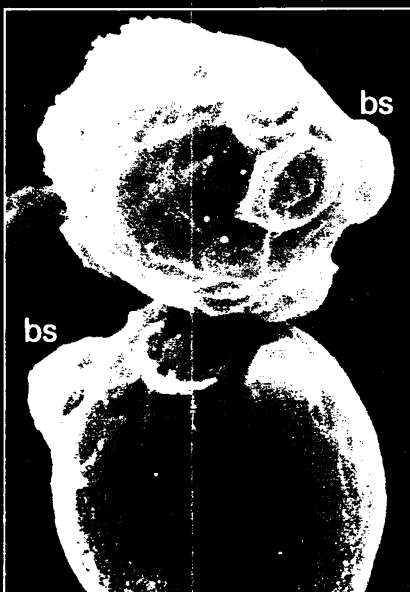


the fungicidal breakthrough

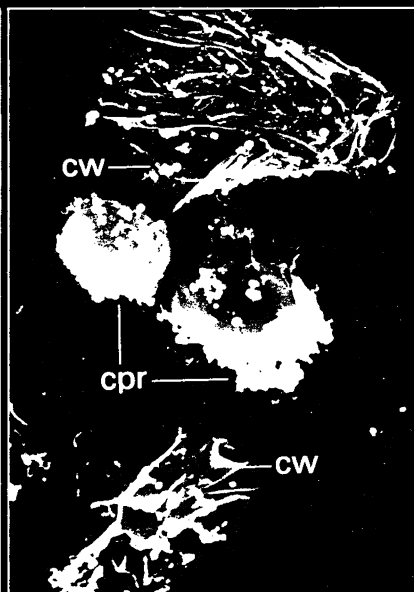
Scanning Electron Microscopic photographs of *Candida albicans* before and after treatment with miconazole.



1. Untreated cells appear as isolated yeast forms in an oval shape and with a smooth surface showing the formation of polar buds (pb).



2. Upon exposure to a fungistatic dose (10^{-7} M) of miconazole the cells tend to cluster. Budding becomes disorganized with visible budding scars (bs) that are randomly distributed over the surface of the cells.



3. Treatment with a fungicidal dose of miconazole causes the cell wall (cw) to burst. Vesicles of cytoplasm disintegrate and adhere to the surface of yet unbroken cells (cpr). (The interior of the cells is completely lytic).



the standard fungicidal treatment

Daktarin

miconazole nitrate 2 % w/w

*highly effective
in all fungal infections*

further information available on request from :



Janssen Pharmaceutica
2340 Beerse, Belgium.

or from :
Janssen Pharmaceutical Ltd.
Janssen House, Marlow, Bucks.
PL/0242/0016, 17, 47, 48, 52

Trade Marks : Brentan in Denmark and Spain, Daktar in Germany, Daktarin in all other countries.

WHY NOT SUBSCRIBE TO THE SPECIALIST JOURNAL PUBLISHED BY THE BMA:— A SELECTION INCLUDES

ARCHIVES OF DISEASE IN CHILDHOOD, BRITISH HEART JOURNAL, BRITISH JOURNAL OF OPHTHALMOLOGY, GUT, JOURNAL OF CLINICAL PATHOLOGY & JOURNAL OF NEUROLOGY, NEUROSURGERY & PSYCHIATRY.

FULL DETAILS ON SUBSCRIPTION PRICES FROM BMA SPECIALIST PUBLICATIONS: BMA HOUSE, TAVISTOCK SQUARE, LONDON W.1
TELEPHONE 01-387 4499 EXT. 180.

PORTABLE ELECTROCARDIOGRAPHS

- * 1, 2, 3 or 6 Channels
- * Portable Monitors
- * C.C.U.-I.C.U. (Package)
- * Electronic Sphygmomanometers
- * Export & After Sales Service
- * Demonstrations & Brochures on request



Cardiacare Instruments (U.K.) Ltd.

49 HALL ROAD, ROMFORD, ESSEX RM8 4LJ
TEL: 01-597 5099 TELEX: 24224 REF: 2901

ADVERTISEMENTS

PHARMACEUTICAL PRODUCTS

Readers are reminded that prescribers' literature and clinical information are always available from advertisers on request.

"The BMA Members' Dining Room -much more than just a Restaurant"



Much more than just a restaurant — more like a club. A place where members and guests can relax in an atmosphere more associated with Pall Mall or St James's Street. Take pre-lunch drinks at our fully licensed bar and select your meal from the A La Carte Menu — "Escalope of Veal", "Entrecote Steak Garni" and many more dishes for around just £2. Accompany your meal with wine from our competitively priced list.

In addition to the Dining Room the adjoining Members' Lounge (Hastings Room) is available for morning coffee and afternoon tea.

Table Reservations
01-387 4499
(Catering Manager)

CHILDREN'S ADVENTURE HOLIDAYS with PGL



First and still the best!

Give your children an exciting activity holiday with P.G.L. learning new skills, such as sailing, riding and canoeing. After 22 years, P.G.L. know all about holidays for the 7's-17's. No previous experience necessary. Instruction, specialist equipment and full board included. With new Centres and prices from only £52 a week, it's a must for parents who want the best for their children.

Three-in-One Adventure

Sailing, pony trekking and canoeing, plus archery and hill walking in the Brecon Beacons and Wye Valley. Also multi-activity, and special interest holidays for families and children.

Sunspot Adventure

Unique holiday for teenagers, canoeing in the South of France, sailing and windsurfing on the Mediterranean. For beginners or the experienced.

Canal Cruising in Holland

Value-for-money holiday for less active teenagers exploring Holland on a traditional Dutch barge. Experienced P.G.L. leaders.

Write or ring for "Children and Families" brochure. 18-30's + brochure also available.

P.G.L. Young Adventure

439 Station St., Ross-on-Wye HR9 7AH.
Tel: Ross-on-Wye (0989) 4211/7
(24 HOUR SERVICE)



Carefree Camping in France

Motor to one of our fully equipped, ready-erected luxury tents, or caravans, on specially selected camp sites on the coast of Brittany and Vendee. Your family can enjoy 2 weeks holiday from less than £45 each, and prices include car ferry (all routes), insurance, site fees, and services of resident British representatives. Free colour brochure from:

Carefree Camping

(Dept. D.R.)

Stephyns Chambers, Hemel Hempstead, HP1 1DG
Tel: 0442 48101 24 hour Ansafone

DISCOVERY—

In 1929, the pure crystalline digoxin was isolated from *digitalis lanata* by Wellcome research workers.

Digitalis lanata



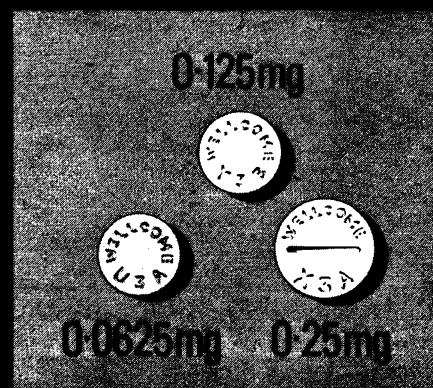
Wellcome production at Dartford, Kent

CONSISTENCY—

Tablet equivalence has been maintained by the highest standards of manufacture.

FLEXIBILITY—

The LANOXIN tablet range (plus the PG Elixir and Injection) offers greater flexibility of dosage.



LANOXIN

TRADE MARK

Wellcome research into practice

Full prescribing information about Lanoxin (digoxin) is available on request.
Wellcome Medical Division, The Wellcome Foundation Ltd., Berkhamsted, Herts



If you were convinced that the population is not eating any more animal fat than it was in 1909 - would it make you stop and think?

It is sometimes said that the incidence of CHD is linked with an increasing consumption of animal fats.

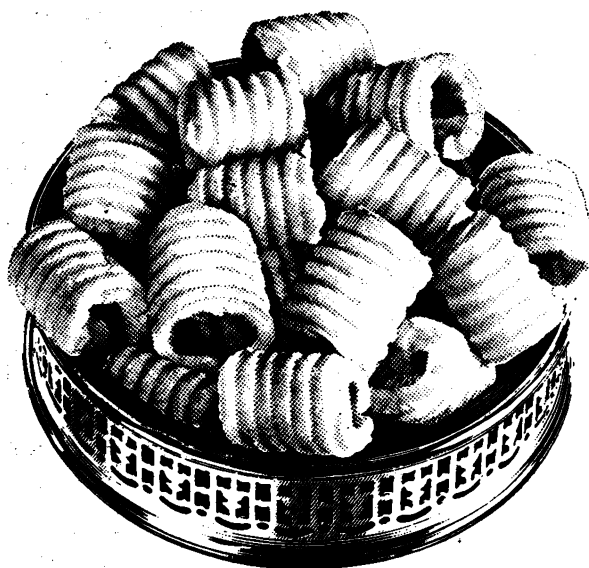
Statistics and estimates have been used to substantiate this. But are they correct?

Supposing we are not, in fact, eating any more fat now than we were seventy years ago?

Viscount Trenchard has challenged the validity of the estimates. He has shown them to be wrong.

In a recent article¹ he said that fat consumption is no higher to-day than it was in 1909. Statisticians, he said, had not, until 1974, allowed for the trend towards much leaner animals. Also, they excluded UK lard and dripping production from consumption estimates for the years before 1934.

In other words, ten per cent of carcass weight was rendered and eaten as lard, but were not added to consumption estimates.



This means that there has been no significant rise in fat consumption during the last 70 years.

Issued in the interests of balance by the Butter Information Council.

To receive occasional material on Fats and Health write to:-
Department B.M.J. 2,
Butter Information Council,
Bank Street Suite,
158 High Street,
Tonbridge, Kent TN9 1BJ.

	Quoted Statistics	The Trenchard Formula
	grams/per day	
1909/13*	98	128
1924/28*	109	133
1934/38	130	135
1954	136	135
1963	143	135
1974	133	133
1975	130	130

*Estimates

**Butter—we've been eating it
for a thousand years**

**More than 180,000
health care professionals
read
THE NEW ENGLAND JOURNAL OF MEDICINE
every week...**

You should, too!

The New England Journal of Medicine is read, quoted and referred to the world over. The reason—it presents only papers that offer something new to the medical literature of the day or an extension of an existing body of knowledge; editorials that deal with the internal technology of medicine and its interface with our changing world with impartiality, honesty and integrity. Whatever your medical discipline or the stage of your career, you should subscribe to the journal.



The New England Journal of Medicine
13 Colina Rd., Tottenham, London
England N15 3JA

Gentlemen:

Please enter my subscription to the New England Journal of Medicine as indicated.

Regular _____ 1 year £15.60 _____ 2 years £28.10
_____ 3 years £40.60

Resident or Intern £11.25 per year _____

Student £8.75 per year _____

Life subscription £212.50 _____

Name _____

Address _____

City _____

_____ Cheque enclosed _____ Bill me

The New England Journal of Medicine

Reduced Subscription Rates to BMA Specialist Journals for Junior Hospital Doctors Residents and Interns...

From 1 January 1979 BMA Specialist Journals will be available to junior doctors in all parts of the world for a maximum of four consecutive years at **REDUCED** Annual Subscription Rates. Thereafter, or when reaching consultant status, this special offer will no longer apply.

The following subscription rates apply for 1979:

	REDUCED RATE		Full Rate	
	Inland £	Abroad US\$	Inland £	Abroad US\$
<i>Published Monthly</i>				
Archives of Disease in Childhood.....	17.00	40.00	28.00	65.50
British Heart Journal.....				
British Journal of Ophthalmology.....				
Gut.....				
Journal of Neurology, Neurosurgery and Psychiatry.....	18.00	36.00	30.00	60.00
Cardiovascular Research.....				
Journal of Clinical Pathology.....	18.00	42.00	30.00	70.50
<i>Published six times a year</i>				
Annals of the Rheumatic Diseases.....	13.00	30.00	21.00	49.00
British Journal of Venereal Diseases.....				
Journal of Medical Genetics.....				
Thorax.....				
<i>Published Quarterly</i>				
British Journal of Industrial Medicine.....	9.00	19.00	14.00	32.00
Epidemiology and Community Health.....				

ORDER FORM

To: BMA Publications, BMA House, Tavistock Square,
London WC1H 9JR

Please enter my subscription to:

at the REDUCED RATE of: Inland £..... Abroad US\$.....

My remittance for is enclosed

NAME.....

ADDRESS.....

To be completed by Consultant

I hereby confirm that the above mentioned doctor is a member of the junior hospital staff/resident/intern at

..... Signed.....

DON'T FORGET

As a fast acting diuretic
Burinex^{*} K
is unbeatable...

as a potassium
supplement it's
unforgettable

Your patients rarely forget to take their 'water pill' but all too frequently fail to take their potassium supplement if you prescribe it separately.¹ Burinex K solves this problem because Burinex the 'most effective natriuretic agent'² 'coats' the potassium core - to make it truly unforgettable. In addition - because of the shape and size - it's easier to swallow than the most commonly used potassium supplement alone.³

Burinex K in CCF
right from the start

1. Brit.Med.J., 618, 2, 1977
2. Acta med. scand., 119, 193, 1973
3. J.Int. Res., 104, 3, 1975



Burinex (bumetanide) is a potent short-acting diuretic indicated in the treatment of oedema. Available as Burinex Tablets (1mg and 5 mg), Burinex Injection (4 ml and 25 ml ampoules; each ml contains 0.25 mg bumetanide) and Burinex K (0.5 mg bumetanide and 7.7 mmol slow release KCl). **Dosage:** oral and parenteral normally 1 mg. Higher doses may be used in resistant oedema, for long-term maintenance therapy of CCF. Burinex K is usually given as 2 tablets O.M. **Contra-indications:** Hepatic coma and severe electrolyte disturbances. Burinex K should not be used with potassium sparing agents. **Adverse reactions:** Occasional skin rashes and minor gastric upset. **Precautions:** Burinex may potentiate antihypertensive therapy and rarely, may affect carbohydrate metabolism. Periodic electrolyte checks are advisable on long-term therapy. Burinex K should be stopped immediately if signs or symptoms of bowel ulceration appear.

*Burinex is a trade mark
Full prescribing information available on request



Leo Laboratories Limited
Hayes Gate House, Hayes, Middx.