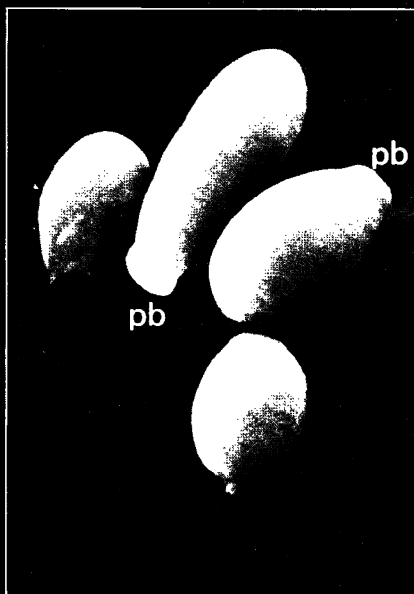
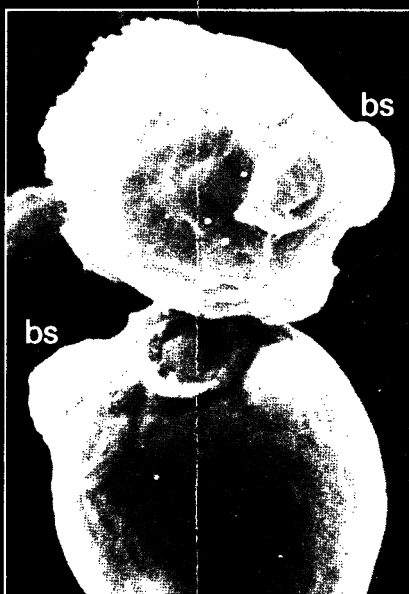


# the fungicidal breakthrough

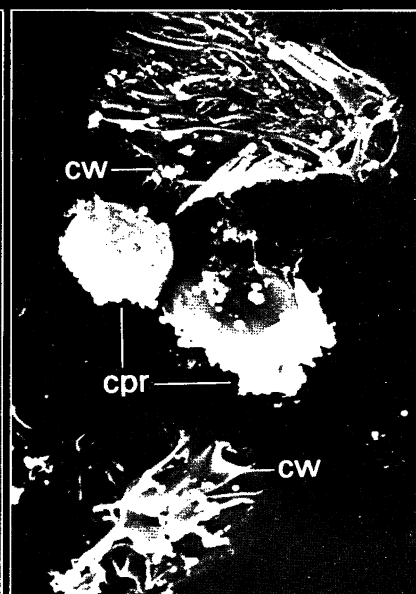
Scanning Electron Microscopic photographs of *Candida albicans* before and after treatment with miconazole.



1. Untreated cells appear as isolated yeast forms in an oval shape and with a smooth surface showing the formation of polar buds (pb).



2. Upon exposure to a fungistatic dose ( $10^{-7}M$ ) of miconazole the cells tend to cluster. Budding becomes disorganized with visible budding scars (bs) that are randomly distributed over the surface of the cells.



3. Treatment with a fungicidal dose of miconazole causes the cell wall (cw) to burst. Vesicles of cytoplasm disintegrate and adhere to the surface of yet unbroken cells (cpr). (The interior of the cells is completely lytic).

*the standard fungicidal treatment*

## Daktarin

miconazole nitrate 2 % w/w

*highly effective  
in all fungal infections*

further information available on request from:



**Janssen Pharmaceutica**  
2340 Beerse, Belgium.

or from:  
Janssen Pharmaceutical Ltd.  
Janssen House, Marlow, Bucks.  
PL/0242/0016, 17, 47, 48, 52

Trade Marks: Brentan in Denmark and Spain, Daktar in Germany, Daktarin in all other countries.

**WHY NOT SUBSCRIBE TO THE SPECIALIST JOURNALS PUBLISHED BY THE BMA:—A SELECTION INCLUDES**

Archives of Disease in Childhood, British Heart Journal, British Journal of Ophthalmology, Gut, Journal of Clinical Pathology & Journal of Neurology, Neurosurgery & Psychiatry.

FULL DETAILS OF SUBSCRIPTION RATES FROM BMA SPECIALIST PUBLICATIONS: BMA HOUSE, TAVISTOCK SQUARE, LONDON WC1H 9JR  
TELEPHONE 01-387 4499 EXT. 309.

## Private Medical & Surgical Rehabilitation

The Rehabilitation Unit at Unsted Park provides facilities for the intensive rehabilitation of patients of all ages. Treatment is carried out by a highly qualified, multi-disciplinary team under medical supervision, comprising physiotherapists, remedial gymnasts, occupational therapists, art therapist, speech therapist and nurses. The team is responsible for regular assessments of patients and for establishing individual treatment programmes.

*Subscribers to the main Private Contributory Schemes may claim benefits within the terms of these schemes.*

*Further information is available from the Matron.*

### Unsted Park

Munstead Heath, Godalming, Surrey.  
Telephone: Bramley (048647) 2061.



## Developments in Clinical Nutrition

The proceedings of a symposium organized by  
MCS Consultants at The Royal College  
of Physicians, London, October 1978  
edited by I. D. A. Johnston and H. A. Lee

The proceedings of this symposium contain papers from a wide range of eminent specialists with the common theme that recent developments justify the utilization of the enteral route in many clinical situations where intra-venous devices are currently common practice. A variety of papers are presented, covering such topics as the fundamental physiology of absorption and metabolism, together with practical management involving specialist subjects such as burns, oncology and surgical gastroenterology, all of which represent current thinking on the subject.

Evidence is presented by speakers and in panel discussion that adequate nutritional support in hospitalized patients is a frequently neglected or underestimated aspect of patient care. Speakers with direct clinical experience of patients with 'overnight' starvation syndrome demonstrate that this is in the main due to the shortcomings of hospital nutritional support and offer constructive criticism towards a more practical approach to patient assessment and monitoring.

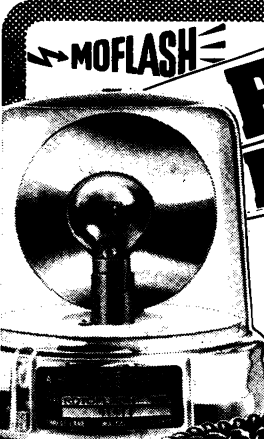
Paperback

116 pages

Price: Inland £3.50; Abroad US \$7.50  
including postage

Payment must be enclosed with order or a surcharge of 30p will be made for rendering invoices and statements.

Order from: **MCS Consultants**  
33 Vale Road, Tunbridge Wells, Kent TN1 1BP. (BMJ)



**MOFLASH**

# FIRST FOR SAFETY

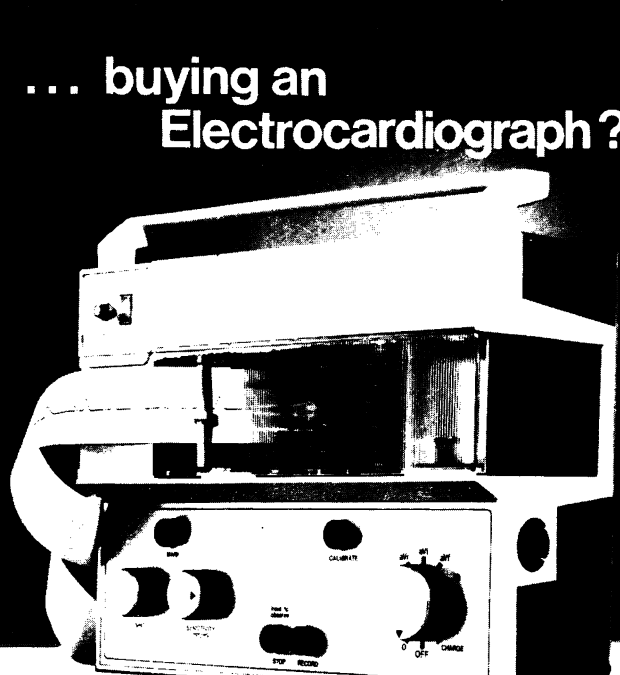
**THE  
ROTOFLASH K77**

- LOW BATTERY DRAIN
- STATIC OR MAGNETIC ATTACHMENT
- SUPPLIED WITH WIRE & PLUG
- 4 COLOUR LENS CHOICE

The ROTOFASH rotary flashing beacon emits a compelling high intensity signal to warn other traffic of your presence on the roads.

*Do yourself a favour and get fuller details NOW!*  
**BRITISH LION WORKS, FOREST LANE,  
WALSALL, WEST MIDLANDS WS2 7AX**  
Phone: Walsall 35616/7-27501

## ... buying an Electrocardiograph?



### ... choose the Cambridge T5-A

- instant go anywhere use ▪ excellent high fidelity records ▪
- first rate service ▪ best value for money ▪

**Cambridge  
Medical**

Rustat Road, Cambridge, CB1 3QH

Ring Marilyn Gadd 0223 42021 for details

### Isle of Barra

This attractive hotel has 41 bedrooms all with private bath. Situated overlooking Tansudale beach and one of the island's fine hill lochs, the Isle of Barra Hotel offers a quiet relaxing holiday on one of the most beautiful of the Outer Hebridean isles.



**Isle of Barra Hotel, Tansudale, Isle of Barra.**  
Outer Hebrides PA80 5XW  
Tel: 08744 383

# Our application has been accepted. Here's why:

administration without disturbing even the most elaborate hair-do.

**Dermovate Scalp Application**  
(0.05% w/w clobetasol propionate)  
For severe steroid-responsive scalp conditions including psoriasis.

25ml (£1.90\*)  
Also available in 100ml plastic squeeze bottles.

30ml (£1.19\*)  
Also available in 100ml plastic squeeze bottles.

**Betnovate**  
Trade mark  
**scalp application**  
30 ml  
Glaxo

**Betnovate** (0.1% w/w betamethasone valerate)  
The effective treatment for steroid-responsive scalp conditions such as seborrhoeic dermatitis and the inflammation associated with severe dandruff. Gives prompt relief from itching followed by a highly satisfactory clearance of lesions.

**Scalp Application**  
A specially formulated alcohol/water base slightly gelled to spread across the scalp without running down the face or neck. Cooling. Soothing. Saves all the inconvenience of frequentampoos or massage with messy gels.

## leaders in topical steroid therapy

### Prescribing information

**Dosage and administration** Apply sparingly night and morning until improvement occurs. With Betnovate Scalp Application improvement may be sustained by applying once a day or less frequently.

With Dermovate Scalp Application, once control is achieved, therapy should be discontinued. Repeated short courses may be used to control exacerbations. If continuous steroid treatment is necessary, a less potent preparation should be used.

**Side effects** Betnovate and Dermovate Scalp Applications are usually well tolerated, but if signs of hypersensitivity appear, application should be stopped immediately. With all topical corticosteroids, when extensive areas are treated, sufficient systemic absorption may

occur to produce the features of hypercorticism. This is more likely to occur in infants and children, with occlusion, or when treatment is prolonged. Local atrophy may occur after prolonged treatment under occlusion. Rarely, treatment of psoriasis with corticosteroids (or its withdrawal) is thought to have provoked the pustular form of the disease.

**Precautions** Care must be taken to keep the preparation away from the eyes. Do not use near a naked flame.

In infants and children avoid long term continuous topical therapy where possible, as adrenal suppression can occur even without occlusion. Select the least potent corticosteroid which will control the disease.

Topical administration of corticosteroids to pregnant animals can cause foetal abnormali-

ties. The relevance of this finding to humans has not been established; however, topical steroids should not be used extensively in pregnancy, i.e. in large amounts or for prolonged periods.

**Contra-indications** Viral and dermatophyte infections of the scalp.

### Product Licence numbers

Betnovate Scalp Application: PL/0004/5133  
Dermovate Scalp Application: PL/0004/0242

Further information on Betnovate and Dermovate (trade marks) Scalp Applications is available from:

Pharmaceuticals Division  
Glaxo Laboratories Ltd  
Greenford, Middlesex UB6 0HE

\*Basic NHS cost (at time of going to press)

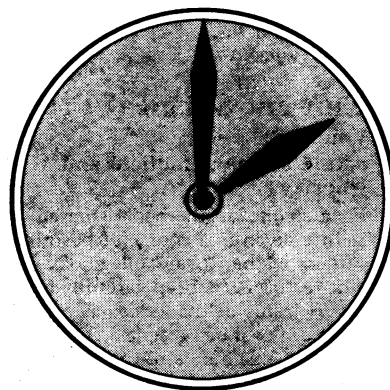


NEW PRODUCT

# cedocard *retard*

sustained release isosorbide dinitrate 20 mg.

**† b.d. provides  
round-the-clock  
protection against  
angina attacks  
provoked by normal stress**



Normally, the blood level of isosorbide dinitrate is maintained for a considerable time - for 2 to 3 hours when administered sublingually, and for 4 to 6 hours when taken orally; the special formulation of Cedocard Retard extends this period to over 10 hours. Cedocard Retard achieves this extended period of activity by a unique formulation which distributes the active material over a larger part of the gastrointestinal tract than is normally achieved.

Recent publications on isosorbide dinitrate include:

J. Pharm. Sci. (1977) **66**, 775. Assinder DF et al: Plasma isosorbide dinitrate concentrations in human subjects after administration of standard and sustained release formulations.

Am. Heart J. (1976) **92**, 455. Battock DJ et al: Effects of isosorbide dinitrate and nitroglycerin on central circulatory dynamics in coronary artery disease.

Am. J. Cardiol. (1977) **39**, 91. Bussmann WF et al: Orally administered isosorbide dinitrate in patients with and without left ventricular failure due to acute myocardial infarction.

Circulation (1977) **55**, 381. Danahy DT et al: Sustained hemodynamics and antianginal effect of high dose oral isosorbide dinitrate.

Am. J. Cardiol. (1977) **39**, 84. Williams DO et al: Hemodynamic assessment of oral peripheral vasodilator therapy in congestive heart failure: prolonged effect of isosorbide dinitrate.

**Indication:** the prophylaxis of angina pectoris. **Dosage & administration:** *Adult dose:* One tablet in the morning and one tablet before retiring to sleep. Onset of action is 20-30 minutes and the duration of action is 10-12 hours. *There is no recommended dose for children.* **Contraindications:** A history of sensitivity to the drug. **Precautions:** Tolerance and cross-tolerance to other nitrates may occur. **Adverse reactions:** Cutaneous vasodilation with flushing, transient episodes of dizziness and weakness, and other signs of cerebral ischaemia, may occur with postural hypotension. **Legal Category:** P. Product License: 0424/0007. **Basic NHS Price:** 60's £3.85.

Full prescribing information and Data Sheet available to the medical profession on request.

**TILLOTTS LABORATORIES**  
**Henlow Trading Estate, Henlow, Beds.**

**Current Surgical Practice****Volume 1****edited by John Hadfield and Michael Hobsley**

The first of a series of books on a course of lectures given at the Royal College of Surgeons of England for final FRCS candidates.

'A mine of information and will be of value not only to those studying for their higher degrees but also to trained surgeons who wish to consult authoritative articles on the advancing edge of surgery.'—*Postgraduate Medical Journal*

280 pages 69 illustrations Cloth £14

Paper £6.95

*Recently published***Current Surgical Practice****Volume 2****edited by John Hadfield and Michael Hobsley**

Each chapter in the book is based on a lecture given in a course of postgraduate surgery at the Royal College of Surgeons. The lecturer has been carefully chosen as an expert in his field and also as a good teacher; some are past or present members of the Court of Examiners of the College.

392 pages 38 line and 76 half-tone illustrations Paper £11

**Edward Arnold**41 Bedford Square,  
London WC1B 3DQ**Caved-S<sup>®</sup>****heals peptic ulcers****EFFECTIVELY****AND****ECONOMICALLY**
Full prescribing information on request from  
TILLOTTS LABORATORIES, Henlow Trading Estate, Henlow, Beds.

# Our prescription. Take one with every new car.

Doctors can benefit significantly from the new Car Leasing Plan developed for British Medical Finance. The Plan takes account of current legislation and reduces the cost of running a new motor car.

For further details of how you could have a better car for a lower outlay, telephone Alan Emerson at 01-262 1272 or clip the coupon on the right.



Please send me details of your  
New Car Leasing Plan

Name \_\_\_\_\_

Address \_\_\_\_\_  
\_\_\_\_\_  
\_\_\_\_\_

Tel. \_\_\_\_\_

British Medical Finance  
199/201 Old Marylebone Road,  
London, NW1 5QR.

A2

# Reduced Subscription Rates to BMA Specialist Journals for Junior Hospital Doctors Residents and Interns...

BMA Specialist Journals are now available to junior doctors in all parts of the world for a maximum of four consecutive years at **REDUCED Annual Subscription Rates**. Thereafter, or when reaching consultant status, this special offer will no longer apply.

The following subscription rates apply for 1979:

	REDUCED RATE		Full Rate	
	Inland £	Abroad US\$	Inland £	Abroad US\$
<i>Published Monthly</i>				
Archives of Disease in Childhood.....	17.00	40.00	28.00	65.50
British Heart Journal.....				
British Journal of Ophthalmology.....				
Gut.....				
Journal of Neurology, Neurosurgery and Psychiatry.....				
Cardiovascular Research.....	18.00	36.00	30.00	60.00
Journal of Clinical Pathology.....	18.00	42.00	30.00	70.50
<i>Published six times a year</i>				
Annals of the Rheumatic Diseases.....	13.00	30.00	21.00	49.00
British Journal of Venereal Diseases.....				
Journal of Medical Genetics.....				
Thorax.....				
<i>Published Quarterly</i>				
British Journal of Industrial Medicine.....	9.00	19.00	14.00	32.00
Epidemiology and Community Health.....				

## ORDER FORM

To: BMA Publications, BMA House, Tavistock Square,  
London WC1H 9JR

Please enter my subscription to:

at the REDUCED RATE of: Inland £..... Abroad US\$.....

My remittance for ..... is enclosed

NAME.....

ADDRESS.....

To be completed by Consultant

I hereby confirm that the above mentioned doctor is a member of the junior hospital staff/resident/intern at

..... Signed.....

# The new antirheumatic from Geigy



## **VOLTAROL<sup>®</sup>** diclofenac sodium

**bridges the gap  
between efficacy and tolerability**

**The potent antirheumatic effect  
and very good tolerability  
of Voltarol have been confirmed**

- in over 90 countries throughout the world
- in over 10,000,000 patients
- in comparison with aspirin, indomethacin, ibuprofen, ketoprofen, naproxen and phenylbutazone
- in more than 15,000 patients in controlled clinical trials.

**Presentation** Tablets containing 25mg diclofenac sodium, circular, slightly biconvex with bevelled edges, yellow enteric coated, approximately 7mm diameter, imprinted Geigy on one side.

**Mode of action** Voltarol is a non-steroidal agent with marked analgesic/anti-inflammatory and antipyretic properties. Like most other drugs in this class, it is an inhibitor of prostaglandin synthetase.

**Indications** Rheumatoid arthritis, osteoarthritis.

**Dosage** Oral: In adults the initial dosage is 25-50mg 3 times daily, depending on the severity of the condition. Maintenance dose should be reduced to the minimum amount that will provide continuous therapeutic control, usually 1 x 25mg tablet three times daily.

Dosage in children has not yet been established.

The tablets should be swallowed whole, with a meal.

**Contraindications** Peptic ulcer.

Voltarol is contraindicated in asthmatic patients in whom attacks of asthma, urticaria or acute rhinitis are precipitated by aspirin or other non-steroidal anti-inflammatory agents with prostaglandin synthetase inhibiting activity.

**Precautions** Voltarol should not be prescribed during pregnancy, unless there are compelling reasons for doing so.

Patients with a history of peptic ulcer, haematemesis, or melaena, or with severe hepatic or renal insufficiency, should be kept under close surveillance.

Voltarol has been reported to depress

salicylate levels, and vice versa; the clinical relevance of this phenomenon is not yet clear.

**Warnings & side-effects** Initially, some patients may complain of epigastric pain, nausea and diarrhoea, headache and slight dizziness. These side-effects are often transient, disappearing with continuation of medication.

Occasionally skin rash, peripheral oedema and abnormalities of serum transaminases have been reported.

Very rarely peptic ulcer and haematemesis or melaena have been reported, mainly in patients with a history of such disorders, or who were receiving concomitant anti-rheumatic medication.

**Accidental overdosage** There is no known antidote to Voltarol and the treatment is

symptomatic. Immediate treatment consists of forced emesis to recover undigested tablets.

**Pharmaceutical precautions** Storage - protect from moisture.

**Legal Category** Prescription only.

**Package quantities** Basic N.H.S. prices  
Packs of 100. £9

**Further information** Pharmacodynamic studies have shown no potentiation of oral hypoglycaemic and anti-coagulant drugs.

**Product Licence No.** Tablets 25mg PL0001/0036

**Product Licence Holder** Geigy Pharmaceuticals, Macclesfield, Cheshire, SK10 2LY

