

To be Stamped with Penny Stamp and Posted.

# BRITISH MEDICAL ASSOCIATION.

---

SIXTY-THIRD ANNUAL MEETING.

JULY 30th, 31st, AUGUST 1st and 2nd, 1895.

---

Members of the British Medical Association who intend to visit LONDON during the Annual Meeting, and have not intimated their intention, will greatly facilitate the labours of the Reception Committee if they will fill up the following forms, and forward them as addressed on the other side.

The Forms are intended for the use of Members of the British Medical Association exclusively.

---

*It is my intention to be present at the ANNUAL MEETING in LONDON.*

Name .....

Address .....

---

*It is my intention to be present at the ANNUAL DINNER of the Association on Thursday Evening, August 1st, and I herewith enclose Cheque (or P.O.O.) for One Guinea (Or Fifteen Shillings.)\**

Signature .....

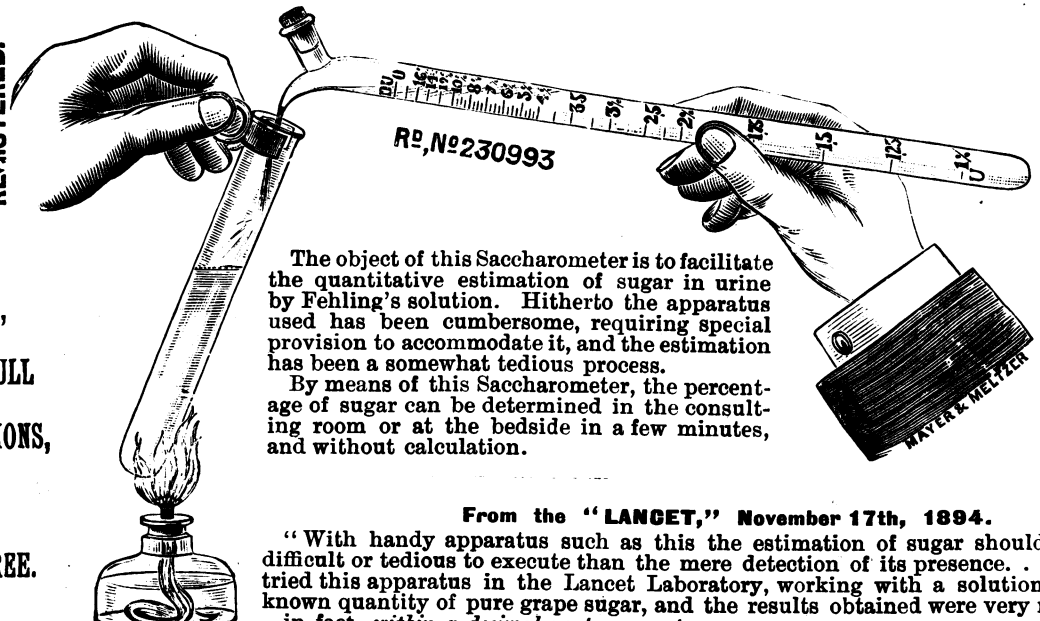
**DINNER TICKET, with Wine inclusive, £1 1s. DINNER TICKET without Wine but inclusive of Aerated Waters, 15s.**

*Cheques should be crossed and made payable to Dr. DUNDAS GRANT, Secretary to the Dinner Committee.*

# CARWARDINE'S SACCHAROMETER.

REGISTERED.

PRICE,  
WITH FULL  
INSTRUCTIONS,  
8/-  
POST FREE.



REGISTERED.

The object of this Saccharometer is to facilitate the quantitative estimation of sugar in urine by Fehling's solution. Hitherto the apparatus used has been cumbersome, requiring special provision to accommodate it, and the estimation has been a somewhat tedious process.

By means of this Saccharometer, the percentage of sugar can be determined in the consulting room or at the bedside in a few minutes, and without calculation.

From the "LANCET," November 17th, 1894.

"With handy apparatus such as this the estimation of sugar should be no more difficult or tedious to execute than the mere detection of its presence. . . . We have tried this apparatus in the Lancet Laboratory, working with a solution containing a known quantity of pure grape sugar, and the results obtained were very near the truth—in fact, within a decimal part per cent.

Sole Manufacturers:

**MAYER & MELTZER,**

Surgical Instrument Makers, 71, Great Portland St., London, W.

**THE M. & M. QUANTITATIVE TEST CASE,**

Containing Carwardine's Saccharometer, Ureometer and Albumen Tube.

PRICE - - - - 21s.

Penny  
Stamp.

British Medical Association.

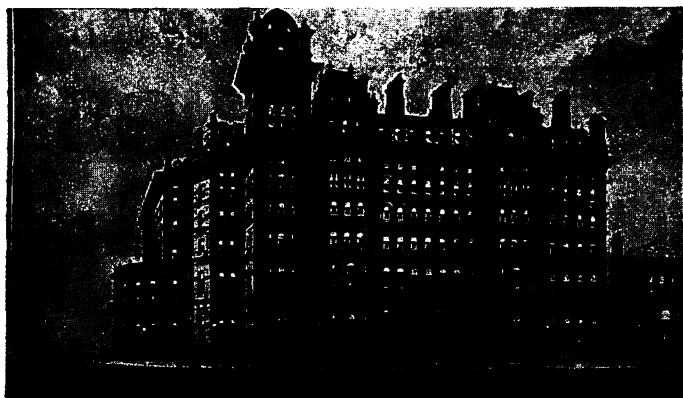
The HONORARY SECRETARIES,

(ANNUAL MEETING),

11, Chandos Street,

Camden Square,

London, W.



FOR COMFORT AND CONVENIENCE.

# THE LANGHAM HOTEL,

*Unrivalled Position in*

Portland Place, at top of Regent Street, London, W.

Situated in the most Healthy Locality, 95 feet above  
Thames High-water Mark.

Near the Best Shops, Theatres, &c. Modern Improvements.  
Artesian Well Water. Electric Light Throughout.

**MODERATE TARIFF.**

## THOS. COOK AND SON,

(Originators of the European Tourist and Excursion System. Established 1841.)

**COOK'S INTERNATIONAL TRAVELLING TICKETS** are available for one or more passengers to travel by any train any day, and do not compel the holders to travel in parties.

**AMERICAN TOURS.**—Messrs. Thomas Cook & Son issue Tickets to all parts of America and Canada.

**AUSTRALIA AND NEW ZEALAND.**—Under special arrangements with the Australasian Railway Administrations. Thomas Cook & Son issue Tickets to and through all parts of these countries.

**HOLLAND, BELGIUM, THE RHINE, GERMANY, AUSTRIA, &c.**—Thomas Cook & Son have their own Tickets for Single or Return Journeys, or Circular Tours, including all places of interest.

**INDIA, CHINA, &c.**—Tickets issued to any point, and through special contracts with the Indian Government, Tickets can be had for all parts of India.

**ITALY.**—Single Journey and Circular Tickets to and through all parts of Italy.

**NILE, THE STEAM NAVIGATION OF THE.**—Thomas Cook & Son (Egypt), Ltd., are the sole owners of the New Tourist Steamers on the Nile, and Tickets can be had and berths secured at any of their Offices.

**PARIS.**—Cook's Single and Return Tickets by the Mail Route, *via* Dover and Calais. Hotel accommodation at Cheapest Rates. Through interpreters, and Carriage Drives in Paris.

**PALESTINE TOURS** are rendered easy, safe, and economical by the superior arrangements of Thomas Cook & Son. The parties can be so fixed as to go independently or under personal management any time between October and April.

**SWITZERLAND.**—Cook's Swiss Tickets embrace every Railway, Steamer, and Diligence Route in the country, and are issued at greatly reduced fares.

**HOTEL COUPONS.**—The system of Hotel Coupons introduced by Thomas Cook & Son reduces the troubles of Continental travel to a minimum. The coupons are issued at a uniform rate, and are accepted at first-class hotels in all parts of the World.

**PERSONALLY CONDUCTED TOURS** under efficient management leave London at frequent intervals. For full particulars apply at any of the Tourist Offices.

**BANKING AND EXCHANGE.**—Foreign Money of all denominations bought and sold. Bank Drafts. Circular Notes issued and Cable Transfers made, etc.

**THOS. COOK & SON, Chief Office: Ludgate Circus, LONDON.**

= 100 . A . I =

# Armbrecht Coca Preparations

(IMITATED BUT NOT EQUALLED).

To Prevent and Relieve Fatigue of Mind and Body.

To Steady the Nerves, Sight, and Voice.

## ARMBRECHT COCA TONIC WINE.

A wine glass full before exercise will give an amount of vigour and endurance unequalled by any tonic or stimulant, as there is no reaction.

It delays hunger and thirst, and enables men to undergo a great amount of work and exercise without apparent fatigue.

## ARMBRECHT COCA WINE EXTRACT.

Five drops of this Extract equals a glass of Coca Wine and may be taken on sugar, in water, in milk, or on a biscuit. A 100 dose bottle can easily be carried in the pocket.

## ARMBRECHT COCA WINE LOZENGES.

One sucked during exercise keeps up the strength and clears the voice and brain.

**NOTHING EQUALS ARMBRECHT COCA PREPARATIONS FOR STEADYING THE NERVES.**



Price of Coca Wine	...	4/- an Imperial Pint Bottle.
" " " Extract (about 100 doses)	...	3/9 post free.
" " " Lozenges	...	1/9 per Box.

**ARMBRECHT, NELSON & CO., Duke Street, Grosvenor Square.**



48 Highest Awards over all Competitors throughout the World.

# SEABURY & JOHNSON

ORIGINAL MANUFACTURERS OF

**PHARMACOPŒIAL AND SURGICAL PLASTERS**

*In Rubber Combination,*

**ANTISEPTIC DRESSINGS and ABSORBENTS, &c.**

NEW YORK AND LONDON.

MANUFACTURERS OF

# PLASTERS

OF EVERY DESCRIPTION.

**Note to the Profession.**—We ask that SEABURY & JOHNSON'S may be specified by name, as, being dearer than many competing articles, they are frequently replaced by cheap substitutes. All our articles are standard goods, and are recognised and used as such by the first surgeons of the day, all the world over.

Our goods all conform to officinal or other accepted formulas, and all medicinal products, &c., are manufactured in our own laboratories, and carefully assayed by qualified chemists, in order to secure uniformity of medication in every article we produce.

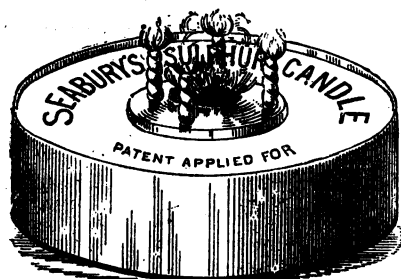
There is no danger of accident, mistake, or misunderstanding, if SEABURY & JOHNSON'S name is specified and insisted upon.

# SEABURY'S SULPHUR CANDLES

(PATENTED)

are the safest, surest, and most convenient form in which Sulphur can be burned indoors, for

## DISINFECTION BY FUMIGATION.



Small Size, retailing at 6d.

This popular size of the SEABURY SULPHUR CANDLE is in a permeable container which absorbs the water in which it stands, and thus, bringing the water into actual contact with the burning sulphur, and the candle really becomes a **NASCENT SULPHUROUS ACID CANDLE.**

One large candle will burn for two hours, and thoroughly disinfect a room of ordinary size.

Medical men are everywhere ordering SEABURY'S SULPHUR CANDLES (which burn readily and safely) as the most reliable means of disinfection extant after

**Diphtheria, Scarlet Fever, Small Pox, Typhoid Fever, and other Infectious Diseases.**

**SEABURY & JOHNSON,**

LONDON OFFICES AND WAREHOUSE, 32 AND 33, SNOW HILL, LONDON E.C.