

SCHALL & SON

(W. E. SCHALL, B.Sc. Lond.)

Established 1887.

The oldest established firm devoted solely
to Electro-medical and X-ray Apparatus.

BRITISH PROPRIETARY. BRITISH CAPITAL.

The ILLUSTRATION SHOWS a

NEW TABLE

FOR

**GALVANIC AND FARADIC TREAT-
MENT, MUSCLE TESTING, etc.**

Fitted with Galvanic Board, Metronome, and Smart-Bristow Coil.

THE "PANTOSTAT"

(EARTH FREE UNIVERSAL APPARATUS)

AND

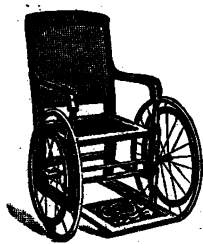
**ALL OTHER TYPES OF ELECTRO-
MEDICAL AND X-RAY APPARATUS.**

Manufactured throughout in our Workshops on the Premises.

**71/75, NEW CAVENDISH STREET,
LONDON, W. 1.**

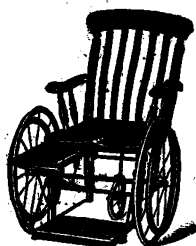
BAILEY'S INVALID FURNITURE.

New Year Gifts for the Wounded.



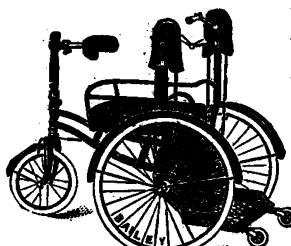
No. F263.

No. F 263. A strong
Merlin Chair, Birch
polished Walnut, caned
back and seat, rubber-
tyred wheels, 24 inches
diameter, with hand
rims.



No. F500.

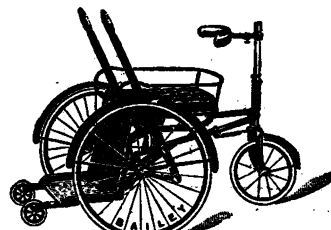
No. F500. **Merlin Chair**,
very strongly built,
suitable for Military
Hospitals. With or with-
out Detachable Leg Rest



No. F509.

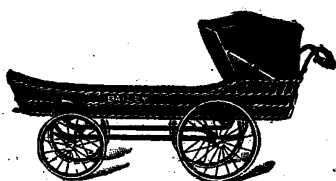
No. F509. **Hand-propelled Invalid
Chair**, Seat with nickel-plated rail.
The Steering is effected by the back
support, ball bearings throughout,
and pneumatic tyres.

Hand Brake, extra.

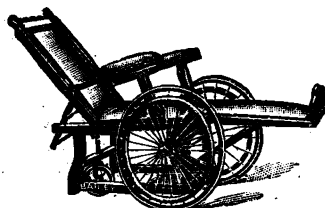


No. F.S. 540.

No. F.S. 540. **Hand-propelled
Invalid Chair**, with lever action,
Seat mounted on Spiral Springs, Rexine
covered Cushion, weldless steel frame,
ball bearings, and heavy Roadster
pneumatic tyres, steering as No. 509.



Spinal Carriages.



Lounge Merlin Chair.



Invalid Carriages.

W. H. BAILEY & SON, Ltd., 38, Oxford Street, W. 1.

Telegrams: "BAYLEAF, LONDON."

Telephone: MUSKUM 1484.

British Medical Journal.

DECEMBER 28TH, 1918.

CONTENTS.

ORIGINAL ARTICLES.

- An Address on the Treatment of Some Common Female Ailments. By FREDERICK J. McCANN, M.D. Edin., F.R.C.S.Eng. 705
- A Clinical Lecture on Gonorrhoea in Women. By W. E. FOTHERGILL, M.A., B.Sc., M.D. 707
- Pulmonary Spirochaetosis. A Preliminary Note on Spirochaetes in the Sputum of Soldiers admitted to Special Malaria Wards. By J. A. THOMSON, Captain R.A.M.C. 709
- Note on the Epidemiology of Amoebic Dysentery. By H. M. WOODCOCK, D.Sc. (With Chart)..... 710
- The Triangle Splint in the Treatment of Compound Fractures of the Humerus. By PHILIP TURNER, M.S.Lond., F.R.C.S.Eng., Major R.A.M.C. (Illustrated)..... 711
- The Position of the Operation for the Excision of a Cartilage in Military Surgery. By T. E. HAMMOND, F.R.C.S. 714
- A Clean Milk Supply. By SHERIDAN DELÉPINE, M.B., C.M., M.Sc. 715

MEMORANDA.

- Camphor in Acute Influenzal Bronchitis and Bronchopneumonia. By P. L. GIUSEPPI, M.D.Lond., F.R.C.S.Eng. 716
- The Significance of Fats in the Diet. By J. ARGYLL CAMPBELL, M.D., D.Sc. Edin. 716
- The Treatment of Bilharziosis by Intravenous Injections of Tartar Emetic. By C. J. WILEY, Major A.A.M.C. 716

LEADING ARTICLES.

- MEDICAL DEMOBILIZATION 724
- MEDICINE AND INDUSTRY 724

THE WEEK.

- The Home-coming 725
- University Members 725
- Belgian Doctors in England..... 726
- The Study of Industrial Fatigue..... 726
- Medical Demobilization in France..... 726
- Control of Venereal Disease in Austria. 727
- Haemorrhagic Spirochaetal Bronchitis. 727
- The Biology of a Life Table..... 727

THE WAR.

- CASUALTIES IN THE MEDICAL SERVICES. 728
- HONOURS 728

GENERAL ARTICLES AND NEWS.

- An Inter-Allied Fellowship of Medicine. 722
- Motor Notes for Medical Men. By H. MASSAC BUIST 720
- ANTE-NATAL TREATMENT OF SYPHILIS. 723
- MEDICAL NEWS 732

REPORTS OF SOCIETIES.

- ROYAL SOCIETY OF MEDICINE:
Enteric Fever in Flanders in 1914-15.. 717
- ROYAL ACADEMY OF MEDICINE IN IRELAND:
Influenza in Ireland..... 717

REVIEWS.

- An East-End Pioneer and his Wife 718
- Surgery at a Casualty Clearing Station. 719
- Notes on Books 719

LOCAL NEWS.

- SCOTLAND—
Associate Professors in Edinburgh..... 729
- After-war Work of the Universities.... 729
- ENGLAND AND WALES—
King Edward's Fund for London..... 729

CORRESPONDENCE.

- Medical Advisers of Indian Governments. By R. H. Elliot, Lieut.-Colonel I.M.S.(ret)..... 730
- The Toilet of the Mouth in Influenza. By Arthur Court, M.B., B.C..... 731
- Medical Demobilization. By Frank C. Eve, M.D., F.R.C.P..... 731
- The Scottish Universities Constituency. By Robert W. Cockburn, LL.B., W.S. 731

UNIVERSITIES AND COLLEGES.

- UNIVERSITY OF LONDON..... 731
- UNIVERSITY OF MANCHESTER..... 731
- ROYAL COLLEGE OF SURGEONS OF EDINBURGH 732

LETTERS AND ANSWERS.

- QUERIES AND ANSWERS—
Income Tax 732
- LETTERS, NOTES, ETC.—
Tobacco and Neurasthenia..... 732
- Carbolized Oil Inunction in Scarlet Fever 732

The SUPPLEMENT contains:—

- British Medical Association.
Current Notes: Medical Demobilization.
—Medical Resettlement.—War Emergency Fund of the Royal Medical Benevolent Fund.—The Half-yearly Indexes for 1918.

JOHN BALE, SONS & DANIELSSON, LTD.,

PRINTERS AND PUBLISHERS OF MEDICAL AND SCIENTIFIC WORK,

are prepared to consider the publication of MSS. on the most favourable terms to the Author. They hold an **UNIQUE POSITION** for effecting a considerable saving in time, labour, and expense, in that the work is all carried out under their personal supervision, and **EXECUTED ON THE PREMISES**. The various departments comprise: PUBLISHING—LETTERPRESS PRINTING—LITHOGRAPHIC PRINTING—ILLUSTRATIONS BY LINE and HALF-TONE PROCESS—DRAWINGS ON STONE—PHOTOGRAPHY—BOOKBINDING.—We hold a large and varied stock of Charts, Clinical Figures, Diagrams; also Medical and Dental Card Index Systems.

CATALOGUE ON APPLICATION.

83, 85, 87, 89, & 91, GREAT TITCHFIELD STREET, OXFORD STREET, LONDON, W. 1.

STAMMERING, CLEFT PALATE, SPEECH, and LISPING.

By Mrs. BEHNKE.

Price 1s. 6d. net, postage 2d., of Mrs. BEHNKE, 18, Earl's Court Square, S.W., who receives stammerers for treatment. References to Doctors whom Mrs. BEHNKE has cured, and others.

A GREAT NATIONAL DISTRIBUTION

THE PRUDENTIAL

Paid to its Policyholders in 1917 over
£9,700,000

or over £31,000 for each Working Day

Some Preparations of
SOUTHALL BROS. & BARCLAY, Ltd.
Birmingham.

PHENOQUIN

(Southall)

is specific in the elimination of Uric Acid from the system. In bottles of 50 & 100 tablets.

ALDEMINT

Antiseptic Throat Tablets.

In bottles containing 50 tablets.

CYSTOFORMIN

A powerful Urinary Antiseptic.

Sold in Tubes containing about 20 tablets.

LYCRESOL

A Standardised Disinfectant.

HIPPURATES

of
SODIUM, AMMONIUM & LITHIUM
as a preventative treatment in
Gout and Arterio Sclerosis.

Prices and particulars on application.

VITAFER

The All-British Tonic Food.

In 2- & 3- tins; larger sizes 5/6 & 10/-

SOUTHALL BROS. & BARCLAY, Ltd., Birmingham.

Droitwich BRINE CRYSTALS



FOR rectifying all unhealthy conditions arising from excess of uric acid in the system, doctors have long found Droitwich Brine Crystals of valuable assistance. Prepared from the original Springs, Droitwich Brine Crystals readily dissolve in the daily hot bath. The first bath relieves Rheumatism, Sciatica, and Lumbago. A short course gives lasting benefit.

A free Sample Bag for testing sent to any Doctor on request.

Retail Price 3/- (War Price) per 28 lb. Bag.
Free to any Railway Station in Great Britain.

WESTON & WESTALL, LTD. (Dept. 30L),
16, EASTCHEAP, LONDON, E.C. 3.

BRAND'S ESSENCE OF BEEF,

Prepared from the finest British Meat.

Now put up in GLASS.

Price Lists of Invalid Preparations free on application to
BRAND & CO., Ltd., Mayfair Works, Vauxhall, London.

HOLLAND'S

PATENT
FOOT APPLIANCES.
RENOWNED FOR
EFFICIENCY & ELASTICITY.

T. HOLLAND & SON, 46, SOUTH AUDLEY STREET, LONDON, W.

SULPHAQUA

LARGELY AND SUCCESSFULLY PRESCRIBED IN

**SKIN DISEASES, RHEUMATISM, GOUT, NEURASTHENIC
CONDITIONS IN ARTHRITIC SUBJECTS, &c.**

And as a valuable addition to the Inunction TREATMENT OF SYPHILIS with Mercury.

Employed in **BATH and TOILET BASIN.**

Possesses powerful Antiseptic, Antiparasitic, and Antalgic properties. Relieves intense Itching and Pain, is
WITHOUT OBJECTIONABLE ODOUR, and does not blacken the bath enamel.

**SULPHAQUA
SOAP**

Recommended for the Skin and Hair. Especially useful in the treatment of Acne
and Seborrhœa of the Scalp. Largely used in dermatological practice.

In Boxes of ½-doz. and 1-doz. BATH CHARGES, 2 doz. TOILET CHARGES, and ¼-doz. SOAP TABLETS.

Samples and Literature on request.

Advertised only to the Profession.

THE S. P. CHARGES CO., Manufacturing Chemists, St. Helens, Lancs.

"SULPHAQUA" stocked by the leading Wholesale Drug Houses in Canada, Australia, New Zealand, South Africa, India, &c.

ALLIANCE DRUG AND CHEMICAL CO.

34, Leadenhall St., London, E.C. 3.

Established 1812—Reorganised 1902.

The Company specializes in providing the Medical profession at the lowest possible inclusive prices (no charge for Bottles, &c., or Cases, &c.) with pure and reliable Drugs, Chemicals, Pharmaceutical Preparations, Compressed Tablets, Pills, Surgical Dressings, and Stock Mixtures of approved Formulae as used by the London and other Hospitals. We append a few sample prices for guidance in the great saving that can be effected, and in many instances our Clients have written us stating we have saved them

40 per cent.

of their usual Yearly Account for Drugs. This saving is not reflected in the quality of our Goods, but is primarily due to not employing TRAVELLERS, thus saving the purchaser the cost of the Travellers' Salaries and expenses which greatly enhance the prices the usual Drug Houses have to charge.

NOTE.—Only Terms Net Cash with order without discount, or orders received through London Merchants or Bankers. Goods carriage forward. All packages free. Export cases extra.

**OUR DETAILED PRICE LIST
WILL BE SENT ON RECEIPT
OF A PROFESSIONAL CARD.**

INFUSIONS CONCENTRATED.

1-7 in 6lb. Bottles.

Aurant @ 2/8 lb. Gentian @ 1/8 lb.
Aurant. Co. @ 2/8 lb. Rhei @ 2/3 lb.
Columbe @ 2/4 lb. Senega @ 5/- lb.
Cinchon Acid @ 2/10 lb.
Lassar's Paste, 14 lbs. @ 1/11 lb.; 1 lb. @ 2/2 lb.
*Liq. Belladon. Meth., 5 lbs. @ 9/6; 1 lb. @ 9/10 lb.
*Liq. Ather Nitros (Sp. B. ther Nit. Substitute)
5 lb. @ 2/3 lb.
*Liq. Ammon. Acet. Conc. (1-7), 6 lb. @ 2/3 lb.
Aromat., 6 lbs. @ 1/2 lb.
Morph. Hydrochlor. P.B., 1 oz. @ 23/- oz.
Petroleum Jelly Flav. P.B., 7 lbs. @ 1/- lb.

PILLS TASTELESS COATED.

Potass. Iodid. P.B., 3 lbs. @ 15/7 per lb.
Soda Sulphas Featherly cryst., 7 lbs. @ 3d. lb.
Sp. Ather Nit. P.B., 4½ lbs. at 5/10 lb.; 1 lb. @ 6/2.
Sp. Ather Aromat. P.B., 5 lbs. @ 4/10 lb.
Syr. Cascara Aromat. P.B., 6 lbs. @ 7/- lb.
Glycero-Phosph. Co., 6 lbs @ 3/- lb.

SYRUPS.

Aurant. P.B., 7 lbs. @ 1/8 lb.
Easton B.P., 7 lbs. @ 2/2 lb.
Ferri Iodid. P.B., 7 lbs. @ 1/9½ lb.
Ferri Phosph. Co., 7 lbs. @ 10d. lb.
Hypophosph. Co., B.P.C., 7 lbs. @ 1/10 lb.
Prunl. Virg., B.P., 7 lbs. @ 1/3 lb.
Ithamni, 7 lbs. @ 1/4 lb.
Rhei, P.B., 7 lbs. @ 1/4 lb.
Scillas, P.B., 7 lbs. @ 1/- lb.
Senna, P.B., 7 lbs. @ 1/6 lb.
Toluit, P.B., 7 lbs. at 1/4 lb.

TABLETS COMPRESSED.

Bland's (Sugar-Coated), gr. 5 ... Per 1000
Nitroglycerini, P.B., gr. 1-50th ... 4/3
Perchloride of Mercury (Coloured) ... 4/6
One Tablet in 1 pint of Water is
equivalent to 1-1000.
Thyroid Gland, gr. 5 ... 14/6

We endeavour to adhere to prices quoted, but as same fluctuate from day to day, they must be considered as subject to change without notice.

*TINCTURES.

In 5-lb. Bottles.

B.P. Aquos.	B.P. Aquos.
Belladon ... 5/9 2/3	Hyoseyam ... 5/6 2/6
Benzoin Co. 6/2	Nucis Vom. 4/7 1/9
Campb. Co. 4/4 2/1	Opil. ... 10/2 8/6
Card. Co. 3/4 1/6	Quin. Amon. 4/6
Gentian Co. 3/3 1/7	Rhei Co. ... 3/3 1/7

Ung. Acid Boric Flav., 28 lb. pail @ 1/2½
Hydarg. P.B., 7 lbs. @ 4/3 lb.
Ammon., 7 lbs. @ 2/6 lb.
Ichthamolis B.P.C., 7 lbs. @ 4/6 lb.
Zinci Ox., made with Paraf. Mollis a/b, 28 lbs.
@ 1/10½.

*Minimum quantity at these prices: Home Trade 3.
Export 12 Winchester Quarts assorted.



ARHEOL

(C₁₅H₂₆O)

THE ACTIVE PRINCIPLE OF SANDALWOOD OIL.
Used with conspicuous success in Gonorrhœa, Cystitis,
Vesical Catarrh, etc. Does not produce Backache.

Directions: 10 to 12 capsules daily.

ASTIER LABORATORIES:

45, Rue du Docteur Blanche, PARIS.

For Samples and Literature address:

WILCOX, JOZEAU & CO., 49, Haymarket, London, S.W.
Australasia—Messrs. Joubert & Joubert, 552, Flinders St., Melbourne
Canada—Messrs. Rougier Bros., 63, Notre-Dame St. East, Montreal.
India—Messrs. Eugene Meffre, P.O. Box 130, Bombay
India—Messrs. Eugene Meffre, 11, Ezra Street, Calcutta.

THE BURBERRY

The Super-Weatherproof

REPRESENTS the most economical and distinguished form of protection in out-door Dress for war-time.

THE BURBERRY, by its efficient resistance to rain and winds, ensures comfort and security under conditions entailing prolonged exposure to chill and damp.

THE BURBERRY, by faultless natural ventilation, entirely avoids the vitiated heat of macintosh or rubber-lined coats.

THE BURBERRY is airtight and gives a splendid sense of freedom, whilst the strong, yet supple, texture of its material imparts exceptional hard-wearing properties.

Patterns, Prices and Catalogue sent on application.

BURBERRYS' CLEANING WORKS.

Men's and Women's Dress Cleaned by the most up-to-date process. Weatherproof garments cleaned and reproofed. Price list sent on request.

Burberrys' Basingstoke House treats direct commissions from Doctors as approval orders, i.e., replaces with its own cheque returned non-approved garment.

BURBERRYS BASINGSTOKE

(LONDON—HAYMARKET, S.W. 1.)



Every Burberry
Garment bears a
Burberry Label

TEST ALL SO-CALLED

DIABETIC FOODS

WITH IODINE SOLUTION BEFORE RECOMMENDATION

GALLARD'S DIABETIC FOODS

STAND THIS AND ALL OTHER TESTS.

SAMPLES FREE.

GALLARD & CO.,

Food Specialists to all
the great Hospitals.

74, REGENT STREET LONDON, W.



Instructions for making perfect Barley Water.

First note that Barley Water is added to the milk only to assist its digestion, and must be made fresh every day. When making Barley Water, follow exactly the simple directions on the tin, using one teaspoonful of Fawcett's Natural Process Barley to a pint of water for Infants under two months, and a dessertspoonful to a pint of water for Infants over two months; these quantities should not be exceeded.

For Infant feeding, mix with the milk in the proportions stated on the tin, or as may be ordered by the doctor.

Prints of this advertisement suitable for Medical Men to hand to patients will be sent on application.

FAWCETT'S NATURAL PROCESS BARLEY
CASTLEFORD, YORKS.

DOCTORS' WAR SERVICE.

The service of the medical profession in maintaining the health of those responsible for carrying on the war at home is of the highest value to the nation, but the depleted ranks of the profession are themselves suffering from strain, especially in districts attacked by the

SPANISH INFLUENZA

epidemic.

Doctors will be pleased to hear of a valuable new specific (prices from 1/4), for vaporisation in a neat little device given with every bottle.



Asthma
Whooping Cough
Catarrh

Also recommended for the treatment of—

Colds
Sore Throat
Measles
Bronchio-Pneumonia

Influenza
Spasmodic Croup
Bronchitis

either alone or in conjunction with any other treatment prescribed.

The powerful disinfectant action of "Fume-Taracine" is also valuable in preventing contagion.

Samples supplied on application to—

The COAL BY-PRODUCTS COMPANY, 12 HOLBORN HOUSE, HIGH HOLBORN, LONDON, W.C.1.

THE FRENCH VICHY-CELESTINS



Property of the
FRENCH GOVERNMENT
DISORDERS OF THE LIVER,
GOUT,
DIABETES, RHEUMATISM,
GRAVEL, &c.

VICHY-ETAT PASTILLES

Two or three Pastilles after each meal facilitate digestion.

CAUTION.—Each bottle from the STATE SPRINGS bears a neck label with the word "VICHY-ETAT" and the name of the Wholesale Agents:—

INGRAM & ROYLE, Limited,
Bangor Wharf, 45, Belvedere Road, London, S.E.
AND AT LIVERPOOL AND BRISTOL

KOND'S EUONYMISED COCOA.

What is it?

A delicious Beverage, taking the place of Tea, Cocoa, or Coffee.

Why take it?

Its use is attended with a marked increase of appetite and rapidity of digestion: all feelings of heaviness after meals disappear; and an increase of the natural flow of bile takes place. It is not aperient, except in repeated doses, but the increased activity of the liver is valuable in removing constipation. It is used in stomach or liver disorders, alcoholism, slow digestion, overwork, depression, loss of appetite, in cases where tea and coffee are not desirable, sedentary habit of life, gout, rheumatism, and biliousness.

Euonymised Cocoa can be freely taken by those unable to take ordinary Cocoas. The Euonymia is taken in the form of a hot infusion is a delicious beverage. Its action in this form is incomparably more direct and powerful than when taken in any other forms.

Highly recommended by the Medical Profession, from whom we have received hundreds of testimonials.

SOLD IN TINS 1s. 6d. and 2s. 6d.
from Grocers or Chemists;
or from the Wholesale Depôts;

MAY, ROBERTS & CO., LTD.,
8, Clerkenwell Road, LONDON, E.C.

NOVARSENOBILLON

For intravenous or intramuscular injection in the treatment of
Syphilis, Recurrent Fever
 and other spirochætal infections.

"Novarsenobillon in my hands has proved a safe and most efficient remedy against the protean ravages of the *Spirochæta pallida*."

Hunterian Lecture—"Diagnosis and Treatment of Syphilis of the Central Nervous System,"

The Lancet, Feb. 16th, 1918, pp. 243/50.

MANUFACTURED IN GREAT BRITAIN UNDER LICENSE & CONTROL OF THE BOARD OF TRADE

Literature and all particulars may be obtained from

MAY & BAKER, LTD., Manufacturing Chemists
 BATTERSEA, LONDON, S.W. 11.

Premier Products

— Duncan —

ANÆSTHETICS	{	Chloroform	}	Organo- Therapeutic
		Ethers		
		Ethyl Chloride		
		Thyroids		
		Pituitary		
		Suprarenal		
		Ovarian, etc.		

Tuberculins

and

Vaccines

as prepared by

The Research Laboratory of The Royal College of Physicians, Edinburgh.

DUNCAN, FLOCKHART & CO.,
 EDINBURGH & LONDON.

Sphagnol

A Distillate of Peat
and possessing
Antiseptic & Antiparasitic
Properties.

OINTMENT AND SOAPS

Some Recent Reports:—

PRURITUS

"I found Sphagnol Ointment act like a charm in a case of Pruritus, all the distressing symptoms disappearing on the first application."

ECZEMA

"I have used Sphagnol Soap for Eczema, and I feel justified in saying that the results were marvellous."

HÆMORRHOIDS

"I have tested Sphagnol Ointment and Soaps and find them more than you claim for them in the treatment of Skin Diseases and Hemorrhoids."

SPHAGNOL IS NOW REGULARLY USED IN HOSPITALS AND PRESCRIBED BY PRACTITIONERS IN THE TREATMENT OF

ECZEMA, PSORIASIS, HÆMORRHOIDS, PRURITUS, ACNE, SCABIES, AND OTHER FORMS OF SKIN INFLAMMATION.

We should like every Member of the Medical Profession to make a personal test and are therefore willing to send a free Sample Set of Sphagnol Ointment and Soap on application.

PEAT PRODUCTS (SPHAGNOL) Ltd. 18, Queenhithe, Upper Thames St., **LONDON, E.C. 4**

BOOTS PURE DRUG COMPANY LTD.

are in a position to immediately supply

CHLORAMINE-T

in powder and tablets

DICHLORAMINE-T

in Chlorcozan Solution or Chlorinated Solutions and products thereof.

Enquiries re prices and particulars to—

BOOTS PURE DRUG COMPANY LTD.

Manufacturing Chemists and
Makers of Fine Chemicals,

HEAD OFFICES, Station Street, NOTTINGHAM.

SIR JESSE BOOT, Managing Director.

HORMOTONE

Is a pluriglandular preparation that has met with the approval of many leading clinicians. Hormotone contains thyroid, pituitary, ovary and testis. Each tablet contains 1/10 grain of desiccated thyroid, and 1/20 grain of desiccated whole pituitary.

"The practitioner should grasp the idea that morbid states may be consequent upon pluriglandular insufficiency and this will encourage him to substitute multiglandular for monoglandular organotherapy on the same lines and for the same reasons that we employ polyvalent sera."—(DARDEL: *The Practitioner*, July, 1912).

Hormotone is indicated in neurasthenia and all asthenic conditions dependent upon functional insufficiency of the adrenal glands.

A well-known American physician writes: "No medicine of this character has ever been devised that produces the uniformly good results that **Hormotone** does when used in suitable cases, and it has come to be my main reliance in a certain class of neurasthenics with a loss of tone in the general musculature."

In neurasthenia associated with high blood pressure and all hypertensive conditions use

HORMOTONE WITHOUT POST-PITUITARY

This preparation was mentioned very favorably by a writer in *The Practitioner* for November, 1917. (See page 481).

Dose of either preparation: One or two tablets three times daily before meals.

LITERATURE UPON REQUEST.

G. W. CARNRICK CO.

23-27, Sullivan Street, New York, U.S.A.

20, Ribblesdale Road, Hornsey, London, N. 8.

SAVARESSE'S MEMBRANOUS CAPSULES

NOT MADE OF
GELATINE



NO NAUSEA
NO REPEATING

Savarasse's Capsules afford the best means of administering Ol. Santal Flav. The Oil is the finest quality distilled in our own Laboratories from Mysore Sandal Wood and the membranous envelope in which the oil is contained prevents the Capsule bursting until it reaches the digestive juices of the intestines. Nauseous eructations are thereby prevented.

In tins containing 22 Capsules each 10 drops.

Free Sample on request.

EVANS SONS LESCHER & WEBB Limited,

56, Hanover Street, Liverpool

60, Bartholomew Close, London, E.C. 1.

SANTAL MIDY

FOR INTERNAL TREATMENT OF URETHRITIS AND
OTHER AFFECTIONS OF THE GENITO-URINARY TRACT.

Santal Midy Capsules have been prescribed with uniform success for over 30 years. Distilled from carefully selected Mysore Santal Wood, the oil is bland and remarkably

FREE FROM THE IRRITANT AND NAUSEATING EFFECTS

which are provoked by many preparations. There is marked absence of Gastric and other disturbances, diarrhoea and skin eruptions. Its mild chemotactic properties permit its administration in relatively large doses without fear of too violent reaction or intolerance.

SANTAL MIDY CAPSULES

may be prescribed and **relied upon** in all stages of affections of the Genito-Urinary tract.

The capsules contain 5 drops, and usually 10 to 12 are given daily in divided doses.

Prepared in the **Laboratoire de Pharmacologie Generale, 8, Rue Vivienne, Paris,**
and sold by most Chemists and Wholesale Druggists throughout the world.

IN CASES OF ECZEMA

and in all inflamed and irritated conditions of the skin the application of Emol-Keleet will be found to afford great comfort and relief.

Its marked efficacy in the local treatment of all skin affections is due to its recognised absorbent and sedative properties, its impalpable texture and its complete freedom from organic matter.

As a soothing agent following the injection of vaccines and in alleviating the distressing pruritis accompanying scarlet fever and measles, Emol-Keleet may be employed with most beneficial results.

Samples free to the Medical
Profession on request.

FASSETT & JOHNSON, Ltd.,
88, Clerkenwell Road, London, E.C.

Emol-Keleet

THE NATURAL SEDATIVE EMOLLIENT
DUSTING POWDER.

GOLD MEDAL. DIPLOMA OF HONOUR. GRAND PRIX.
Member of the Jury and Hors Concours at International Exhibition.

AMYCAINE

(Bi-Hydrochloride of Amyleine and Novocain.)

The New French Anæsthetic. A Substitute, seven times less Toxic than Cocain—Non-irritant—Powerfully Hæmostatic. It is antiseptic and unaffected either by heat or light, while its action is rapid and lasting.

AMYCAINE

has none of the disadvantages of Cocain or Chloroform, and no unpleasant after-effects occur in its employment.

A few recent opinions of Medical Men:—

"May 21st, 1918.—I have used your 'AMYCAINE' and find it very satisfactory."—M.D., D.P.H.
"July 12th, 1918.—No.—General Hospital, D.E.F.—The ampoule of 'AMYCAINE' appears to be equal to Novocain in potency and answered quite well the practical test to which it was put."—M.D.
"Sept. 13th, 1918.—I used your sample of 'AMYCAINE,' and have ordered more for the Eye Hospital here. It seems to act well."—M.D.

SAMPLE AND LITERATURE ON APPLICATION.
Sole agents for Great Britain, Colonies, Dominions, U.S.A.:

A. BREZET & CO., 145 Wool Exchange, London, E.C.2.
Telephone No. CENTRAL 3502. Telegrams: "ABREZICAL, PHONE, LONDON."

Dr. CHAUMIER'S CALF LYPH

GLYCERINATED AND REINFORCED
**THE CHEAPEST AND
MOST ACTIVE LYPH.**

PREPARED UNDER THE

Most Minute Antiseptic Precautions.

Supplied in Tubes, sufficient to vaccinate
1 or 2 persons at 8d. each. 10 persons at
1s. 3d. per tube. 25 persons at 2s. 3d.
per tube. Collapsible tubes (40 vaccinations)
3s. 9d. each.

Packing and postage 2s. in addition.

Agents for Great Britain:

ROBERTS & CO.,
76, New Bond St., LONDON, W.

QUINEINE

(PERRAUDIN).

A Standardised Extract

containing the active principles of

Cinchona Succirubra.

In view of the shortage of Quinine we have pleasure in introducing to the Profession under the title of **QUINEINE**, a carefully standardised extract, prepared from **Cinchona Succirubra** and guaranteed to contain 7% of total alkaloids, of which 5% is Quinine.

Being Standardised the strength is assured and the exact dosage is absolutely secured.



Indications: Same as Quinine.

Dose:

As **TONIC APERITIVE**, 15 to 40 drops in water (sweetened if preferred), twice daily.

As **FEBRIFUGE** and **SPECIFIC**, half a teaspoonful, twice daily in water (sweetened if preferred).

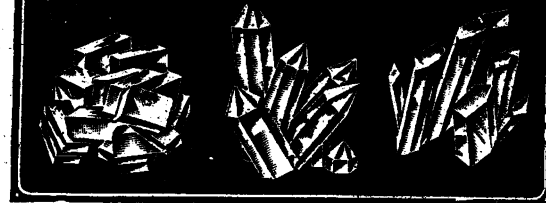
In bottles containing 2 ozs.

When prescribing, please specify

QUINEINE (Perraudin).

TRICALCINE

ASSIMILABLE CALCIUM MEDICAMENT
RECALCIFICATION OF THE ORGANISM



TRICALCINE is a white tasteless powder containing all the active properties of the

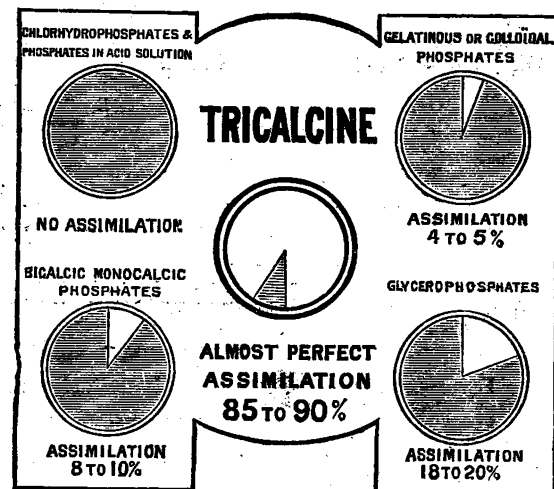
Tribasic Phosphates,

Carbonates and other Salts of Lime and Magnesia in an absolutely pure state and in the exact proportions necessary for the recalcification of the organism.

TRICALCINE is more easily and to a much greater extent, assimilable than other lime salts.

Indications: Incipient Tuberculosis, Anæmia, Rickets, Albuminuria, Chlorosis, Glycosuria and Convalescence, especially in cases of Fracture.

Table showing assimilation of the Principal Phosphates.



TRICALCINE is sent out in Powder, Cachet and Tablet forms.

LITERATURE, CLINICAL REPORTS and PRICE LISTS on REQUEST.

The ANGLO-FRENCH DRUG Co., Ltd., Gamage Building, Holborn, London, E.C. 1.

Telephone: HOLBORN 1311.

NEW YORK: 1270 BROADWAY.

MONTREAL: DANDURAND BUILDING.

Telegrams: "AMPSALVAS, LONDON."

PARIS: 5, RUE CLAUZEL.

WEST END DEPOT:—MODERN PHARMACALS, 48, Mortimer Street, W. 1. Telephone: MUSEUM 534.

Battley's Solution of Opium.**Liquor Opii Sedativus**
(BATTLEY)**THE OLDEST and still THE BEST**
Hypnotic and Sedative.**Advantages:**

- ¶ May be given with the greatest safety, being pure and free from harmful matter.
- ¶ No disagreeable after-effects follow its use.
- ¶ Never varies in strength.

The Medical Annual writes:

"Battley's Solution of Opium is a common word in the Practitioner's vocabulary. It has gained its reputation by its intrinsic value as a remedy which contains all that is sedative and anodyne in opium without its resinous constituents, which are, therapeutically speaking, impurities."

Strength—Twice that of Tinctura Opii B.P. Usual Dose—5 to 15 minims.**Issued in 2 oz., 4 oz., 8 oz. and 1 lb. bottles.**

NOTE.—We do not guarantee our preparations unless in original bottles with the autograph of Richard Battley over each cork and on the label, without which none is genuine.

*Sole Manufacturers:***BATTLEY & WATTS, 18 Wellclose Square, London, E.***Telegraphic Address: "Sedative, London."**Telephone: Central 2483.***Valentine's Meat-Juice**

In **Debility, Nervous Exhaustion** and **Anaemia**, where **Digestion** is **Impaired** and it is **Essential** to **Conserve** the **Weakened Vital Forces**, **Valentine's Meat-Juice** demonstrates its **Ease of Assimilation** and **Power to Restore and Strengthen**.

Employed in many Hospitals and Sanitariums and recommended by many leading Physicians and Surgeons throughout the world.

Physicians are invited to send for Clinical Reports.

For sale by European and American Chemists and Druggists.

VALENTINE'S MEAT-JUICE COMPANY,**Richmond, Virginia, U. S. A.**

Chloramine-T

Disinfectant Wash

FOR MOUTH, THROAT & NOSE

(Prophylactic against Influenza)

Containing Chloramine-T compounded with Sodium Chloride and Eucalyptus.

THIS preparation in convenient powder form combines the powerful disinfectant properties of Chloramine-T with the tonic and refreshing qualities of an aromatic saline wash, and will be found most efficacious in the prevention and cure of Influenza.

Half a teaspoonful of the powder dissolved in half a tumblerful of warm water should be used freely twice or three times daily as a mouth wash, nasal douche and gargle.

A solution double the above strength may be used with a spray, atomiser or nasal irrigator. The same strength solution will also be found suitable for spraying the atmosphere and floors of rooms or buildings to prevent the spread of contagion.

The solution fulfils all requirements where the ordinary antiseptic douches, gargles or sprays against influenza, etc., are recommended: it has the advantage of being not merely antiseptic but germicidal.

Non-poisonous. Non-irritating. Handy and compact.

SUPPLIED IN CARTONS 9d. EACH.

In bulk for disinfecting rooms, walls, floors, etc., in hospitals, medical institutions, etc. Special rates on application.

PREPARED IN THE LABORATORIES OF

Boots Pure Drug Co. Limited,
MANUFACTURING CHEMISTS AND MAKERS OF FINE CHEMICALS. **NOTTINGHAM.**

SIR JESSE BOOT, Managing Director.

CHLORAMINE-T DISINFECTANT WASH IS OBTAINABLE FROM ALL BRANCHES OF
BOOTS THE CHEMISTS.

SUBITOL

(The product of an Allied Country)

Has usefully and efficiently replaced

ICHTHYOL

THE attention of surgeons is directed to the excellent results which have been obtained in the treatment of septic wounds with Ichthyol and glycerine. Dressings do not need changing so frequently, and thus not only is the disturbance to the patient lessened, but valuable time is saved. Even the most septic wounds have been found to respond readily to the above treatment.

Ichthyol being an enemy product

SUBITOL

has been substituted, and has already been found to give equally good results.

The therapeutic efficiency and usefulness of Ichthyol in the treatment of Gastro-Intestinal Affections, Vesical Catarrh, Endometritis, Eczema, Erythema, Hæmorrhoids, Acute and Chronic Arthritis is sustained when **SUBITOL** is prescribed instead of Ichthyol.

SAMPLE AND PAMPHLET SENT FREE.

Prices: 4 ozs., 2/-; 8 ozs., 3/6; 1 lb., 5/6; also in larger containers for Hospital use.

SUBITOL can be had from leading Pharmacists, or direct from—
Chas. Zimmermann & Co. (Chemicals), Ltd., 9 & 10, St. Mary-at-Hill, London, E.C.

BRITISH FIRM.

OMNOPON

TRADE 'ROCHE' MARK

ORIGINATED BY PROF. SAHLI, AND KNOWN ABROAD AS 'PANTOPON.'

An Efficient Sedative

REPRESENTING

THE TOTAL ALKALOIDS OF OPIUM IN SOLUBLE FORM.

Sedative . Analgesic . Antidiarrhœic.

NO UNPLEASANT BY-EFFECTS.

DOES NOT PRODUCE NAUSEA OR CONSTIPATION.

NO DEPRESSANT EFFECT ON THE RESPIRATORY CENTRE.

DOES NOT GIVE RISE TO THE DRUG HABIT.

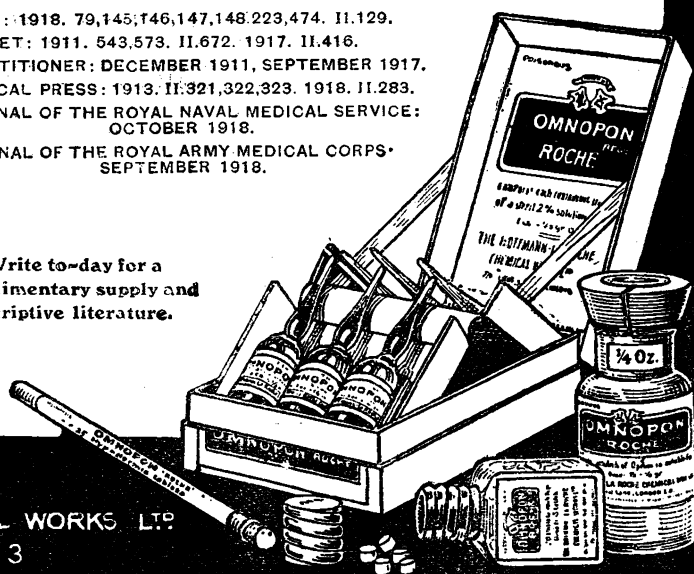
COMBINES THE ADVANTAGES OF OPIUM WITH THOSE OF MORPHIA.

Dose: $\frac{1}{6}$ — $\frac{1}{3}$ Gr. Suitable for Oral and Hypodermic use.

TABLETS, AMPOULES, POWDER, HYPODERMIC TABLETS.

B.M.J.: 1918. 79,145,146,147,148,223,474. II.129.
 LANCET: 1911. 543,573. II.672. 1917. II.416.
 PRACTITIONER: DECEMBER 1911, SEPTEMBER 1917.
 MEDICAL PRESS: 1913. II:321,322,323. 1918. II.283.
 JOURNAL OF THE ROYAL NAVAL MEDICAL SERVICE:
 OCTOBER 1918.
 JOURNAL OF THE ROYAL ARMY MEDICAL CORPS:
 SEPTEMBER 1918.

Write to-day for a
 complimentary supply and
 descriptive literature.



THE
 HOFFMANN-LA ROCHE CHEMICAL WORKS LTD.

7/8 Edil Lane LONDON E.C. 3

WITH HEADQUARTERS IN SWITZERLAND

Immunisation against Hay Fever

THE DEPARTMENT FOR THERAPEUTIC INOCULATION, ST. MARY'S HOSPITAL,
LONDON, W., prepares for supply to the Medical Profession, through
the agency of Messrs. Parke, Davis & Co.,

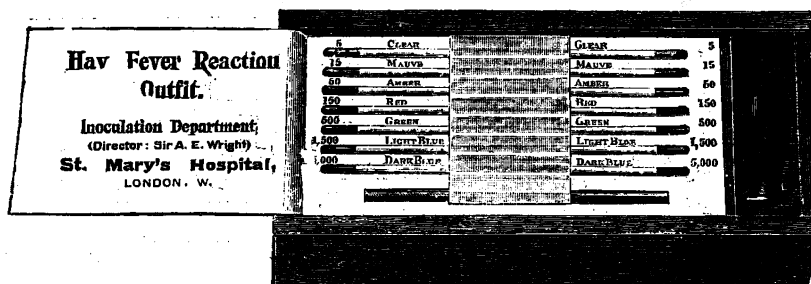
"POLLACCINE" (Pollen Vaccine for Hay Fever)

be administered subcutaneously for the production of immunity
to pollen toxin, both as a prophylactic and curative of hay fever.

A Hay Fever Reaction Outfit

is also supplied, which affords a means of determining

- (a) *whether a patient is susceptible to pollen toxin.*
- (b) *the degree of such susceptibility.*
- (c) *the dosage of "Pollaccine" suited to any case.*



N.B. In very severe cases, prophylactic treatment should be commenced in the early winter;
in milder ones, later in the winter or even in spring may suffice.

Further particulars will be supplied on request by

PARKE, DAVIS & Co., LONDON, W.

Telegraphic and Cable Address: "Cascara, London."

Telephone: Regent 3260 (six lines).

OVALTINE

THE TONIC BEVERAGE



A Cocoa Flavoured concentration of Malt
Extract, Milk and Eggs.

"Ovaltine" is a light, pleasant beverage, and can displace cocoa, coffee, and tea at mealtime.

Each cup contains from 2-3 grains of Lecithin, and the same food value as three eggs.

Used successfully in Convalescence, Agalactia, Lowered Vitality, Wasted and Debilitated Conditions.

A. WANDER, L²45 COWER CROSS ST., LONDON, E.C.1.

TRACE **'NIZIN'** MARK

A Zinc Salt of Sulphanilic Acid

For Genito-Urinary Practice

Superior to other zinc salts in antiseptic power. Solutions of 2 to 6 grains to the ounce of water have proved highly successful, whilst being non-toxic and non-irritating. Solutions are *made in a minute* with 'SOLOID' Brand 'NIZIN.'

Strengths of 'Soloid' Nizin':—

gr. 2 and 0.15 gm., per bottle of 100, 1/0
gr. 20 " " " 25, 2/0
1 gm. " " " 25, 1/8

'Nizin,' per bottle of 1 oz., 1/0; 4 oz., 3/6; 16 oz., 12/0

TRADE MARK **'WELLCOME'** BRAND
Calomel Cream

Contains 5% of calomel with creosote and camphor in refined palmitin. Does not cause pain.

Bottles of 2 oz., 3/4

TRADE MARK **'WELLCOME'** BRAND

**Mercurial Cream
Blue**

Contains 10% of metallic mercury with creosote and camphor in refined palmitin. Causes no pain.

Bottles of 2 oz., 3/4

TRADE MARK **'SOLOID'** BRAND

**Black Mercurial
Lotion**

The most portable and handy state in which the physician can prescribe Black Wash. Each product makes an ounce of fresh solution corresponding to the B.P. Lotion. A bottle of 25 products goes into the vest pocket.

Per bottle of 25, 8d.

See also Wellcome's Medical Diary



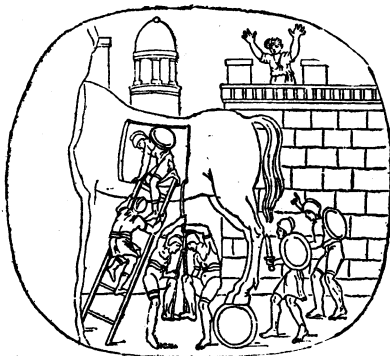
BURROUGHS WELLCOME & CO.
LONDON

NEW YORK MONTREAL SYDNEY CAPE TOWN
MILAN SHANGHAI BUENOS AIRES BOMBAY

All communications intended for the Head Office should be addressed to
SNOW HILL BUILDINGS, LONDON, E.C. 1

London Exhibition Room: 54, Wignmore Street, W.

THE TAKING OF TROY. In the scene here reproduced from an ancient Greek fragment of incised stone, the Wooden Horse has been successfully introduced into the great citadel of "well-walled, well-towered, high-gated" Troy. The Greek warriors concealed within it are emerging, some making use of a ladder, others by means of a rope. A Trojan upon the battlements perceives what is taking place and is filled with horror and amazement. The siege of Troy is no longer looked upon as a myth. By the recent archæological discoveries in the Ægean, including the remains—at Hissarlik—of the fortifications of Homer's Troy, "legend was suddenly turned into history." The carrying off of Helen by Paris may have been the ostensible cause of the Trojan war, but the actual *casus belli* is found by modern thinkers in an ancient "Eastern Question." Greece could not feed herself without access to the corn lands of the Black Sea. Troy, situated on this early trade route, could block the Hellespont. Therefore the possession of Troy was an economic necessity to her. Below is reproduced the legendary story of the taking of Troy as depicted on an ancient Greek vase. Date: Fall of Troy: circa, 1000 B.C.



COPYRIGHT

COMBATS SERIES, 260—GREEK

TRADE MARK **'TABLOID'** BRAND **Antipyretics**

'TABLOID' BRAND Aspirin

Each product contains the stated weight of pure medicament. Absolutely free from talc and boric acid.

Supplied as follows:
gr. 5, in bottles of 25 at 1/0, and 100 at 3/0
per bottle; 0.5 gm., in bottles of 25 at 1/6, and 100 at 4/6 per bottle

'TABLOID' BRAND Ammoniated Quinine

The nauseating taste of fluid preparations is entirely absent. Each product equal to one fluid drachm of B.P. tincture.

Supplied in bottles of 25 at 1/0, and 100 at 3/0 per bottle

'TABLOID' BRAND Ammoniated Quinine with Cinnamon (Capsules)

Each product is equivalent to half a fluid drachm of official tincture with cinnamon.

Supplied in boxes of 20 at 1/6 per box

**'TABLOID'** BRAND Quinine Compound

Presenting cinchona alkaloids, gr. 1, anti-febrin, gr. 1-1.5, monobromated camphor, gr. 1.5, ipecacuanha, gr. 1/8, and cascara sagrada extract, gr. 1/4. Acceptable and effective.

Supplied in bottles of 25 at 1/0, and 100 at 3/0 per bottle

'TABLOID' BRAND Quinine and Camphor

Antipyretic and diaphoretic. Contains quinine bisulphate, gr. 1, and camphor, gr. 1/5.

Supplied in bottles of 25 at 8d, and 100 at 2/0 per bottle

'TABLOID' BRAND Quinine, Camphor and Aconite

A useful product presenting camphor, gr. 1/4, quinine bisulphate, gr. 1/4, and tincture of aconite, min. 1.

Supplied in bottles of 25 at 9d, and 100 at 1/10 per bottle

Always write 'Tabloid' in full

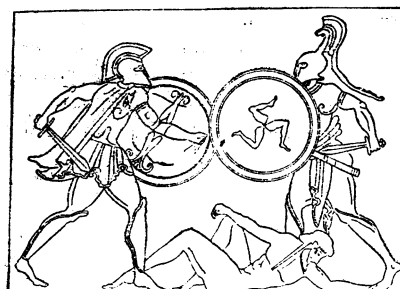
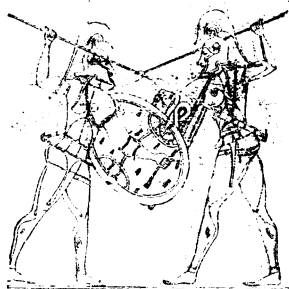


BURROUGHS WELLCOME & CO., LONDON

NEW YORK MONTREAL SYDNEY CAPE TOWN MILAN
SHANGHAI BUENOS AIRES BOMBAY

All communications intended for the Head Office should be addressed to **SNOW HILL BUILDINGS, LONDON, E.C. 1**

London Exhibition Room: 54 Wigmore Street, W.



HOMERIC HEROES IN SINGLE COMBAT.—The figures here reproduced from ancient Greek vase-paintings of the seventh, sixth and fifth centuries are, perhaps, more faithful representations of the warriors of these times than of the Heroic Age, though the differences were in detail, and not in general appearance. The Homeric warrior's defensive armour consisted of helmet, cuirass, greaves and shield as here depicted. The two warriors on the left have skins girt round their waists between the loin-cloth and the cuirass, as may be seen by the projecting tails. The shield consisted of several thicknesses of leather with a metal rim and boss; it had two handles, a metal one in the centre through which the forearm was passed, and a small one of some plaited material which was grasped by the hand at the circumference. Devices were painted upon shields from the earliest times. Date: *Heroic Age of Greece*, circa, 1100-1000 B.C.

COPYRIGHT

Medical Practitioners Prescribing SANATOGEN OR FORMAMINT

are requested to note
that the genuine
original products are
supplied only by

GENATOSAN, LTD.

(British Purchasers of
the Sanatogen Co.)

12, Chenies St., London, W.C. 1
(Chairman: The Viscountess Rhonda)



Advances in

TRADE MARK
A.D. 1715.

Treatment

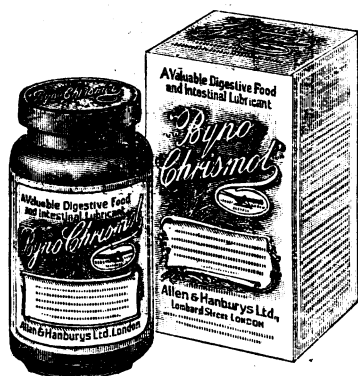
CONSTIPATION.

"Byno Chrismol"

IDENTIFICATION TRADE MARKS

marks a new departure in the treatment of Chronic Constipation, etc. It presents 50 per cent. by volume of "Chrismol," a specially selected and purified Russian mineral oil in intimate combination with the "Allenburys" Malt Extract.

"Byno Chrismol" possesses the following advantages:



It is prepared with mineral oil of the proper viscosity and chemical constitution to ensure efficient lubrication with a complete absence of bye-effects.

The intimate combination of the mineral oil and the "Allenburys" Malt Extract without an emulsifying agent, ensures the maximum activity of the oil as a lubricating agent, and removes the inconvenience that sometimes follows insufficient admixture of the lubricant with the intestinal contents.

It possesses no oily taste. The "Allenburys" Malt Extract present aids digestion and assimilation.

"Byno Chrismol" is specially indicated in Chronic Constipation with symptoms of auto-intoxication, Intestinal Stasis, Mucous Colitis and in the convalescent stage of Typhoid Fever; also after Child-birth, during the nursing period and whenever a simple laxative is required by child or adult.

UNSOLICITED MEDICAL TESTIMONY.

"I am a new man after it ('Byno Chrismol'). It has done me more good than anything I have ever taken. I was greatly troubled with atonic dyspepsia for the past few years, and now I feel quite well again."

. L.R.C.P.

"I tried your 'Byno Chrismol' in a case of habitual constipation with very good results. It acted as a mild laxative."

. L.A.H.

"I have not been taking it ('Byno Chrismol') very long, but I find that life is again a pleasure instead of being in reality a misery for the past five years."

. L.R.C.P.

"The 'Byno Chrismol' tends to permeate and soften the whole motion, and no particle of oil reappears in the stool. This I consider a great advantage."

. M.B., F.R.C.S.

DOSE: A dessert-spoonful or more, two or three times a day.

In bottles at 2/6 and 4/6 each.

Sample free on request.

ALLEN & HANBURYS LTD., LONDON.

City House: 37, Lombard Street, E.C. 3. West End House: 7, Vere Street, W.1.

DEMOBILIZATION AND THE TREATMENT OF VENEREAL DISEASES.

Tested and Approved in Accordance with
L.G.B. requirements.

GALYL

INTRAVENOUS.

IS THE
SAFEST OF
ALL ARSENICAL
COMPOUNDS

IN

SYPHILIS

INTRAMUSCULAR.

Vide Presidential Address, British Pharmaceutical
Congress, 10th July, 1918.

REFERENCES:—

The British Medical Journal,
November 16th, 1918.

The British Medical Journal,
July 27th, 1918, p. 92.

The British Medical Journal,
April 20th, 1918, p. 454,
(MALTA FEVER).

The British Medical Journal,
March 14th, 1914.

The British Medical Journal,
September 12th, 1914.

REFERENCES:—

The Lancet,
December 7th, 1918, p. 770.

The Lancet,
November, 23rd, 1918, p. 707.

The Lancet,
September 30th, 1918, p. 623.

The Lancet,
December 11th, 1915.

The Medical Officer,
August 5th, 1916.

The Journal of the Royal
Naval Medical Service,
July, 1916.

RECURRENT FEVER.
SLEEPING SICKNESS.
FRAMBOESIA.

MALTA FEVER. PYORRHOEA.

LITERATURE, CLINICAL REPORTS and PRICE LISTS on REQUEST.

The **ANGLO-FRENCH DRUG Co., Ltd.**, Gamage Building, Holborn, London, E.C. 1.

Telephone: **MUSEUM 1211.**

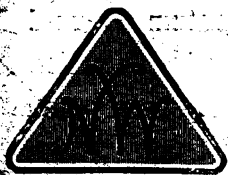
NEW YORK: 4270 BROADWAY.

MONTREAL: DANDURAND BUILDING.

Telegrams: "**AMPSALVAS, LONDON.**"

PARIS: 5, RUE CLAUZEL.

WEST END DEPOT: MODERN PHARMACALS, 48, Mortimer Street, W. 1. Telephone: **MUSEUM 564.**



X-Ray & Electro-Medical Apparatus

SPECIAL NOTICE.

Messrs. NEWTON & WRIGHT, LTD., 72, Wigmore St., LONDON, W. 1. beg to intimate to their numerous medical friends that the old-established manufacturing business carried on by them will, on and after January 1st, 1919, be

WHOLESALE AND EXPORT ONLY.

This policy has been decided on in the interest of producer and consumer alike in order to manufacture in greater quantities and so reduce cost.

The Firm's Showrooms will remain open for the demonstration of apparatus and discussion of new ideas, &c., but they will be glad if customers when placing their order will do so through some recognised House in the Surgical, Electro-Medical, or Electrical Trades.



*We owe a great debt of gratitude
to Mr Coolidge for his invention
I think it is the most wonderful
X Ray Tube that has ever been constructed*

[Abstract from report of meeting of members of
the Royal Society of Medicine. March, 1916.]

The Coolidge Tube is essential for Research work in X-Rays. It is used by Sir J. J. Thomson and most of the leading workers.

No one who has used the Coolidge Tube for treatment would care to go back to ordinary tubes.

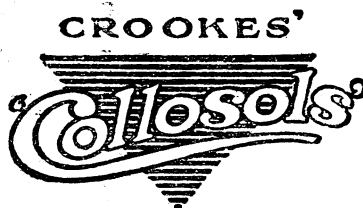
We have completed a new scheme for repairing
Coolidge Tubes which may be damaged or
broken. Details can be had on application to
your dealer or to us.

The
British Thomson-Houston Co., Ltd.,
(Owners of the British Patents)

Mazda House,
77, Upper Thames St., London, E.C. 4.

**The
COOLIDGE
X-Ray Tube**

Collosol Argentum does not stain the conjunctiva after constant use in eye work. (See *British Medical Jour.*, 16th Jan., 1915.)



Collosol Argentum is used by internal administration in Bacillary Dysentery and Diarrhoea.

Recent clinical results show marked indication of

COLLOSOL ARGENTUM IN INFLUENZA

This pure colloidal silver preparation is shown by laboratory test at King's College to have equivalent inhibitive effect on bacteria to Mercuric Chloride, whilst being entirely non-toxic, non-irritant, and harmless to the host. It is therefore indicated in bacterial infections, and is of special value in Influenza by topical application to Throat, Nose and Eye, both as a curative and prophylactic remedy.

PREPARED AT

THE CROOKES' LABORATORIES,

50, ELGIN CRESCENT, LONDON, W. 11.

Telephone: Park 1697.

"PERFECTOS

Nº 2"

VIRGINIA CIGARETTES

(HAND MADE)

High-Class Cigarettes of superb delicacy, the result of a matchless blend of the finest Virginia Tobacco.

10 - 9½ 50 - 3/10

20 - 1/7 100 - 7/2

"PERFECTOS FINOS" are larger cigarettes of the same quality.

Also supplied at DUTY FREE RATES for gratuitous distribution to wounded Soldiers and Sailors in Hospital.

Terms on application to

JOHN PLAYER & SONS, Nottingham.

Branch of the Imperial Tobacco Co. (of Great Britain & Ireland), Ltd.



Alopecia areata ... Pomade Max
Alopecia areata ... Pomade Max
Alopecia prematura ... Pomade Max
Alopecia prematura ... Pomade Max

Loss of Hair, no matter from what cause arising, should be perseveringly treated with POMADE MAX. Apparently hopeless cases receive marked benefit generally almost immediately.

POMADE MAX

(UNG. CANTHARIDIN & HYDRARG. CO.)

For Alopecia Prematura & Alopecia Areata

A dermatologist writes:—

"Without stretching language in the least we may say that it really appears to be a specific for baldness."

An L.R.C.P., Harrogate, writes Sept. 1915:—

"Send pot Pomade Max for own use."

"A Patient (syphilitic) has used it with wonderful results."

MAY, ROBERTS & CO., LTD.,
9 & 11, Clerkenwell Road, E.C.

ORDER DISPENSING BOTTLES NOW!

THEY ARE VERY BAD TO PROCURE,
SO ORDER IN GOOD TIME.

CASH WITH ORDER. Orders over £10 carriage paid. Crates 3s. 6d. each, allowed in full if returned. All orders sent in rotation.

2-oz. ... 18s. per gross.

3-oz. & 4-oz. ... 20s. "

6-oz. & 8-oz. ... 22s. "

H. JESSOP, 27, Westgate, Burnley.

CATALOGUE OF SECONDHAND SURGICAL INSTRUMENTS



OSTEOLOGY, MICROSCOPES, POST FREE.

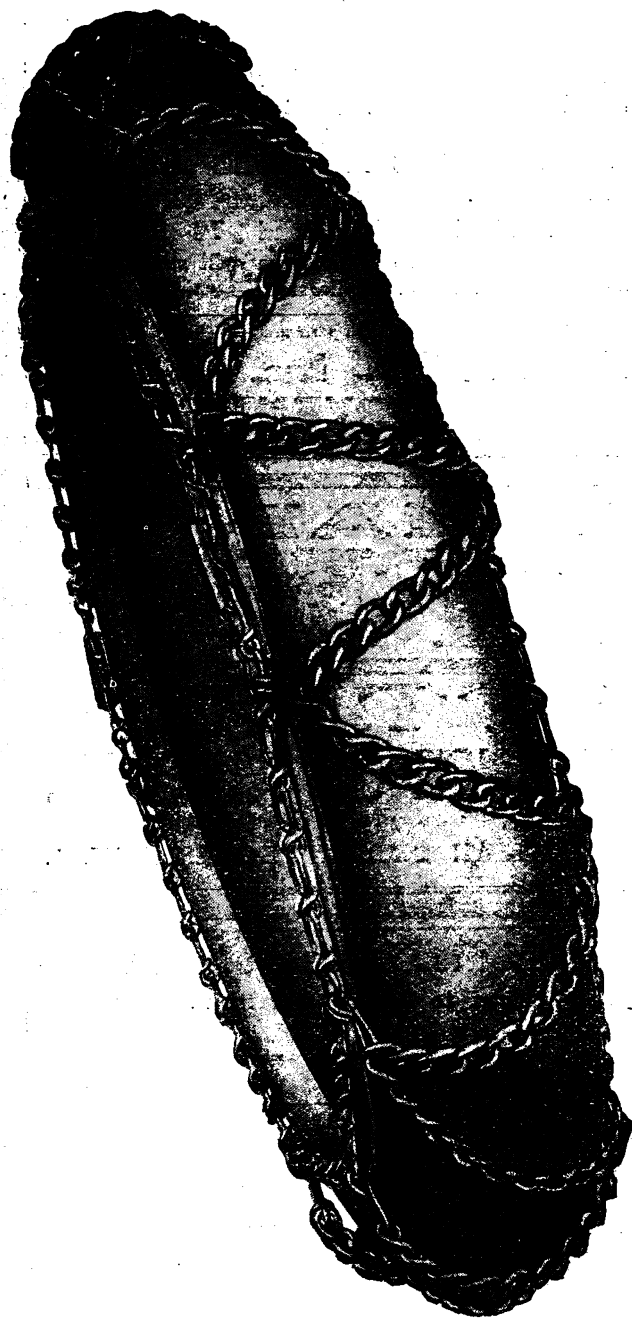
Telephone
City 1708.

Half Sets of Osteology, Articulated Skeletons and Disarticulated Skulls. Secondhand Surgical Instruments, Osteology, and Microscopes bought, sold and Exchanged.

MILLIKIN & LAWLEY, 165, STRAND, LONDON, W.C. 2.

MICROSCOPES

SPECTROSCOPES bought, sold, or exchanged.
JOHN BROWNING (Dept. 2), 146, Strand, W.C.2.
ESTABLISHED 1765. Tel.: Central 7804.



Expert Opinion

"Grooved or even plain rubber tyres are infinitely safer on ice-bound roads than steel-studded; but the right combination is grooved or plain rubbers with PARSONS CHAINS . . . They are the only means by which cars can be safely used on ice-bound or snow-bound roads."

—The Autocar.

Godbolds.

Parsons Chains are indispensable

to every motorist who wishes to drive on every possible condition of road surface—or where roads do not exist.

WHY use costly steel-studded tyres? By carrying Parsons Chains in your car, and putting them on the wheels when road conditions require them, you can always use plain tyres, and thus effect a big saving on your tyre bill.

Under certain conditions of mud and under all conditions of snow and ice, wheels are apt to revolve without obtaining a grip of the road, rendering the car helpless to move. **Parsons chains are the only remedy.**

Parsons Chains are easily attached or removed. They should always be carried on the car as an insurance against accident and trouble. Plain tyres and Parsons Chains—the latter to be used only when necessary—are more economical than steel-studded tyres.

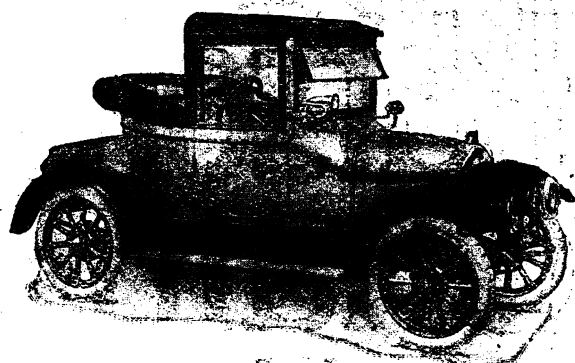
In a Motor War Parsons Chains have made good. They have proved indispensable for every kind of motor vehicle, from a big lorry to a sidecar. There are hundreds of thousands in use abroad. If you realised how invaluable they are, you would not be without them.

Order now from your usual Agent, or you may not be able to get them just when they are indispensable.

The PARSONS Non-Skid Co. Ltd.

23, Store Street, Tottenham Court Rd., London, W.C. 1.

The SINGER "10" AN IDEAL DOCTORS CAR.



A FEW OF THE FAMOUS SINGER "10's" WILL BE AVAILABLE FOR DELIVERY AS CIRCUMSTANCES PERMIT, TO THOSE ABLE TO OBTAIN PERMITS FROM THE MINISTRY OF MUNITIONS.

PRECEDENCE IS USUALLY GIVEN TO DOCTORS.

If would-be purchasers so desire, we will supply them with the necessary form of application.

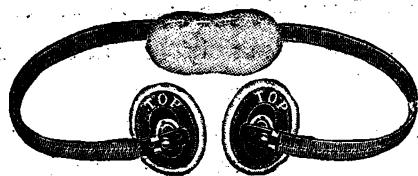
Write to day for full particulars—

**SINGER & CO., LTD.,
COVENTRY, ENG.**

BRITISH MADE ZENITH CARBURETTOR MAKES YOUR PETROL ALLOWANCE GO FARTHER.

SEND FOR LATEST BOOKLET.

ZENITH CARBURETTOR CO., LTD., 40-42, NEWMAN STREET, LONDON, W. 1.
Telephone—REGENT 4812, 4813.



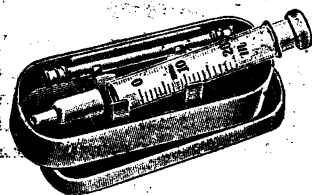
If you have a difficult case of Hernia

Send your Patient to be properly fitted
with a Patent

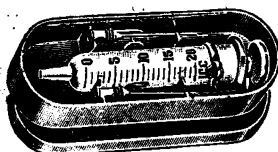
BALL-AND-SOCKET TRUSS.

SALMON ODY LTD., 7, New Oxford St., W.C.1. [Not obtainable elsewhere.]

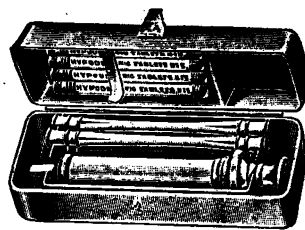
HYPODERMIC & SERUM SYRINGES.



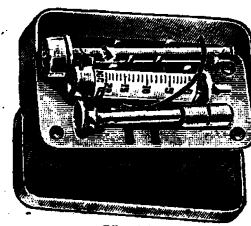
**V 1276
"3-Piece" Complete**
20 mm. 1 c.c. 2 c.c. 5 c.c.
8/6 9/- 10/6 12/6
10 c.c. 20 c.c.
15/6 19/6



**V 1230
"All Glass" Complete**
20 mm. 1 c.c. 2 c.c. 5 c.c.
5/6 5/6 6/6 9/6
10 c.c. 20 c.c.
11/6 15/-

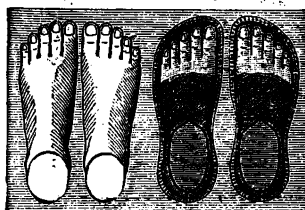


**V 1250
"Army Pattern"**
With 6 Needles and 4 Tubes of
Tablets
15/-



**V 1234
"Record" Complete**
20 mm. 1 c.c. 2 c.c. 5 c.c.
10/6 11/6 12/6 15/-
10 c.c. 20 c.c.
18/- 25/-

SURGICAL MANUFACTURING COMPANY, 83-85, Mortimer Street, London, W.



DOWIE & MARSHALL, BOOTMAKERS

(EASY).

455, WEST STRAND, CHARING CROSS, LONDON.

[Registered at Stationer's Hall.]

(Established 1824.)

["G.P.O. Telephone No. 9015 Central."]

The instructions of the Profession intelligently carried out in the Departments for LADIES, GENTLEMEN, and CHILDREN, and especial attention is given to the Treatment of Weak Ankles and Flat Feet.

Illustrated Catalogue Gratis, in which is instruction for Self-measurement.

DOWIE & MARSHALL, 455, West Strand, Charing Cross, LONDON.

THE NEW PATENT "PHONOPHORE" STETHOSCOPES

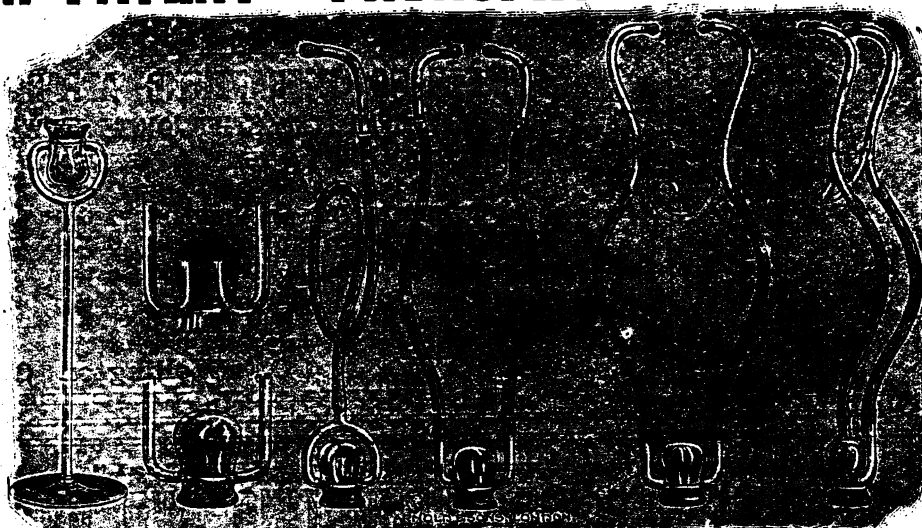


Fig. A.	Fig. B.	Fig. C.	Fig. D.	Fig. E.	Fig. F.
The New Patent "Phonophore" Stethoscope	...	(Fig. A.) 10/6	The New Patent "Phonophore" Stethoscope, Double flexible (Fig. D.) 13/6
Ditto	ditto	Chest piece (Fig. B.) 7/6	Ditto	ditto	Binaural (Fig. E.) 16/6
Ditto	ditto	Single flexible (Fig. C.) 9/6	Ditto	ditto	ditto folding (Fig. F.) 17/6

COPIES OF UNSOLICITED TESTIMONIALS.

DEAR SIRS,—“I find that most certainly the chest sounds are rendered clearer and more distinct by your ‘Phonophore’ than by any stethoscope I have used during over 30 years’ work.”—Yours, F.R.C.S.

DEAR SIRS,—“I may say I am very pleased with the Phonophore. It renders chest sounds more audible and more distinct than any instrument I have so far used.”—Yours faithfully.

DEAR SIRS,—“I have used the Phonophore for 20 years and have never come across a better stethoscope.”—Yours faithfully.

Extract from the “British Medical Journal.”—“Some years ago Messrs. Arnold & Sons, of Giltspur Street, E.C., brought out a Stethoscope which they named the ‘Phonophore.’ Its construction secured a considerably increased volume of sound, and the appliance gained favour among those dissatisfied on general grounds with ordinary stethoscopes, or whose needs, owing to some lack of aural acuity, were not adequately met thereby. Of this appliance the same firm has recently brought out a modification in which the bell-like attachment constituting the chest-piece is provided with two sound tubes instead of one. These tubes are continued upwards, the sound thus being conveyed to each ear direct from the collecting chamber. The gross volume of sound is also greater than supplied even by the original ‘Phonophore.’ This modification of the ‘Phonophore’ is worth examination by anyone interested in stethoscopy.”

ARNOLD & SONS, SURGICAL INSTRUMENT MANUFACTURERS, **Giltspur Street, London, E.C. 1.**
J. E. ARNOLD. E. E. ARNOLD. Telegraphic Address: “Instruments, London.” Telephone No. 5240 City (3 Lines).

ESTABLISHED 1793.

SALT & SON, LTD.

ARTIFICIAL LIMB MAKERS
ORTHOPÆDIC APPLIANCE SPECIALISTS

(Head Offices): **7, CHERRY STREET
BIRMINGHAM.**

Works: CHERRY STREET, LIVERY STREET, & HOWARD STREET, BIRMINGHAM.

Makers of
**Artificial Limbs,
Surgical Boots,
Leg Instruments,
Splints, &c., to
H.M. MINISTRY
OF PENSIONS.**

Illustrated Catalogues
of

TRUSSES,
ARTIFICIAL LIMBS,
BELTS AND CORSETS,
DEFORMITY APPARATUS
Sent on Application.

Patients can be seen at the following Towns by appointment:—

LEAMINGTON.
First Wed. every month.
NOTTINGHAM.
Second Wed. every month.

CHELTENHAM AND
GLOUCESTER.
At Pleece Hotel, Cheltenham.
Third Wed. every month.

LONDON CONSULTING
ROOMS:
**14-18, BLOOMSBURY ST.
W.C.**

Fully qualified Nurse in
attendance.
BY APPOINTMENT ONLY.

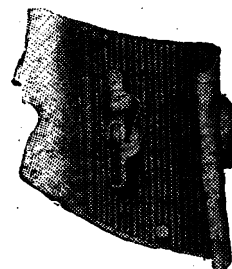
POTTERIES.
At N. Stafford Hotel, Stoke-
on-Trent. Every Friday.
NORTHAMPTON.
Every Saturday.
WORCESTER.
Last Monday every month.
SHREWSBURY.
Last Friday every month.

SALT'S PATENT KIDNEY — BELT —

Over 15,000 already supplied.



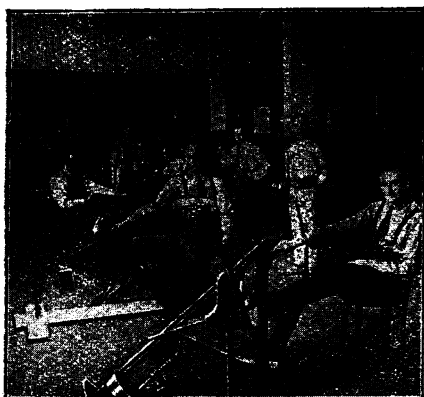
Sectional View showing Spring in position on Inner Pad.



MEASUREMENT FORMS AND FULL
PARTICULARS ON APPLICATION.

KING'S MILITARY HOSPITAL, BLACKPOOL.

Our machines in use.



RECLAIMING THE MAIMED.

Treatment of Wounded Soldiers.

MECHANO THERAPEUTIC APPARATUS.

The LATEST DEVELOPMENT for STIFF JOINTS and WASTED MUSCLES.

SIMPLE. CHEAP. EFFECTIVE.

Send for Descriptive Catalogue and Price List.

Machines for CIRCUMDUCTION of SHOULDER, ANKLE and HIP. Cycle for EXERCISE of LEGS. FOOT and WRIST DROPS, CREEPING BOARDS, etc., etc.

As Designed by Major TAIT MACKENZIE, Captain A. E. BARCLAY.

Machines now being used with wonderful results in CONVALESCENT CAMPS and HOSPITALS all over the Kingdom.

Sole Makers:—

S. MEGARITY & CO., Wellington Street, West,
HR. BROUGHTON, MANCHESTER.

"The House for Everything Electro-Medical."

THE "LIMPET" SYSTEM OF SUPPORTING AND CONNECTING ELECTRODES FOR ELECTRO-MEDICAL TREATMENT.

As now in Use at the Leading Civil and Military Hospitals.

SAFE

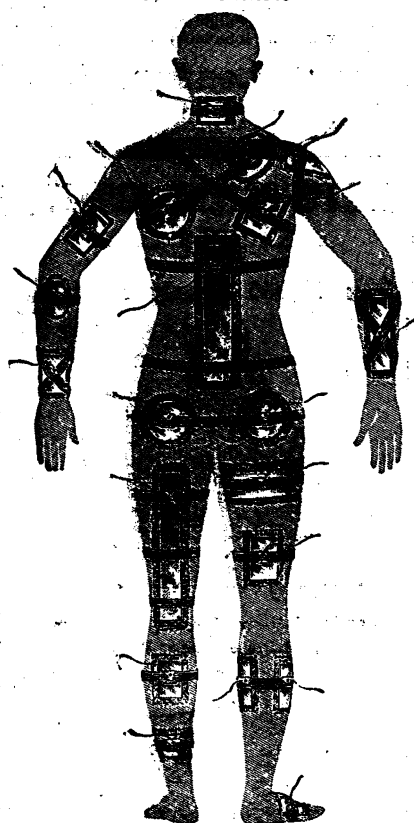
ECONOMICAL

PRACTICAL

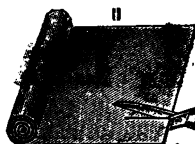
EFFICIENT.

LIMPET ELECTRODE SYSTEM

SOUND CONTACT.



The above figure shows some of the many ways in which Electrodes can be conveniently connected and supported on the body.



- 1 to 9—"Limpet" Aseptic Rubber Belts.
- 10—"Limpet" Terminal Attachment for slipping beneath belt after Electrode has been fixed in position.
- 11—Cutting Electrodes of any desired shape from Non-Oxidisable plastic Electrode metal.
- 12—Old type Electrode, with fixed terminal, the dotted line shows the position where a fracture invariably occurs after a short time in use. The Electrode is fitted in a non-aseptic absorbent case. Entirely superseded by "Limpet" system.
- 13—Showing section of "Limpet" Aseptic Rubber Belts, the wedge-shaped edges render the belt more comfortable to the patient.

This system has been devised to conveniently and economically meet the requirements of those who require to give electro-medical treatment to various parts of the body and to eliminate the difficulty caused by the breaking away of the terminals from the old type of electrode. By this means an electrode can be quickly cut to exactly suit the part to which it has to be applied and the plastic nature of the metal allows one to so fashion it as to accurately fit the curves of the body.

When the electrode has been fastened to the patient by means of the Aseptic Rubber Belt the connection to the source of electrical supply is quickly made by slipping under the rubber belt the "Limpet" terminal attachment which is securely held by the anchoring lip and ensures a perfect contact, and the elasticity of the rubber belt ensures an even contact between electrode and patient which is so necessary.

The following is an extract from "Ionic Medication."

By LYTTON MAITLAND, M.D. Lond.:

"There is one rule that must always be observed—that is never to continue the current if the patient complains of any pain at a particular spot. The effects of the current should be uniformly diffused and pain generally means excessive penetration at one spot. This, if not attended to, will probably result in the formation of a burn or blister."

Guard against this by using the "Limpet" system which ensures even contact and so uniformly diffuses the current.

Send for Pamphlets Nos. 18 and 19.

PRICES.

Aseptic Rubber Belts.

	No. 1	2	3	4	5	6	7	8	9
Length	12"	15"	18"	21"	24"	27"	30"	33"	36"
Price	1/6	1/9	2/0	2/3	2/6	2/9	3/-	3/3	3/6

"LIMPET" Terminal Attachment,

No. 10, 2/6 each.

Plastic Electrode Metal,

No. 11, 5/- per lb. (about 24" x 24").

A Complete "LIMPET" Outfit comprising: 9 assorted belts, Nos. 1 to 9, 2 "LIMPET" Terminal Attachments, No. 10, and 1 lb. Plastic Electrode Metal. Price £1 12s. 6d.

NOTE.—Owing to the increased cost of labour and materials the above prices are subject to 33 1/3% advance.

A Client writes as follows:—"DEAR SIR,—Will you please send me six complete 'Limpet' Outfits for our New Electrical Department. I may say that we have found your 'Limpet' System a great convenience and saving in time and money. It relieves me of the anxiety of my nurses causing a burn.—Yours faithfully, M.D."

Manufacturers and Patentees: **MEDICAL SUPPLY ASSOCIATION, Ltd.,** 167/185, Gray's Inn Road, LONDON, W.C.1.

Awarded the GRAND PRIX and GOLD MEDAL at the last International Medical Congress.

THE LARGEST ELECTRO-MEDICAL SHOWROOMS IN GREAT BRITAIN.

SALAMON'S ÆTHER AND CHLOROFORM

As exclusively used by the most eminent anaesthetists in the Kingdom. Anaesthetical and analytical reports on application to
**SALAMON & CO., Ltd., Manufacturing Chemists,
RAINHAM, ESSEX. Est. 1878.**

BURBERRYS' 1919 SALE

**1918 Topcoats, Weatherproofs, Suits
STARTING JANUARY 1st**
THE BURBERRY WEATHERPROOF, in Burberry
Gabardine. Men and Women. Usual price 5 gns.
SALE PRICE 73/6.
THE TIELOCKEN BELTED TOPCOAT, in Burberry
Gabardine. Men and Women. Usual price 6 gns.
SALE PRICE 84/-.

1/- extra on above prices for packing and carriage.
A large number of Overcoats and Suits in Wool
Coatings is also available at reduced prices by
personal selection only.

Full Sale List post free.

BURBERRYS Haymarket LONDON S.W. 1.

DOCTORS' DISPENSING CORKS.

Special Advertising Line
For (and 8 oz. Bottles, per 10 gross lot, 10/6) Car.
20 20/- Paid
BEST VALUE IN THE TRADE.
ALL OTHER SIZES IN STOCK.

West of England Cork Manuf. Co.
16 & 17, NEW BRIDGE STREET, EXETER.

HOWARDS ASPIRIN TABLETS

PURE: EFFICIENT:
**Do not upset the
digestion.**

Manufactured by
HOWARDS & SONS LTD., ILFORD Est. 1897

**A Typewriter in your Consult-
ing Room is Indispensable.**

TAYLOR'S, LTD.

(Dept. 32)

**WE BUY, SELL,
EXCHANGE, HIRE,
AND REPAIR ALL
MAKES.**

74, CHANCERY LANE, LONDON, W.C. 2.
Holborn 4810 (3 lines). (Est. 1844.)

BRASS NAME PLATES,

For the Profession.

The Plates are manufactured in stout metal, deeply
engraved, mounted on polished mahogany blocks,
with fastenings ready for fixing.

COOKE'S (Finsbury), LTD.,

Brass Plate Engravers, Memorial Brasses, &c.
FINSBURY PAVEMENT HOUSE, LONDON, E.C. 2.

2 telephones: London Wall 573 and 6170.
SEND FOR NEW ILLUSTRATED CATALOGUE.

Adoption.—Lady and Gentle-
man (good position) are desirous of adopting
a little GIRL (gentle birth) from four to six years
of age.—Reply to Dr. DURANT, The Crossways,
Gateshead-on-Tyne.

NATIONAL PROVIDENT INSTITUTION

Copies of Leaflets dealing with current
Life Assurance topics will be sent post free
to readers of the *British Medical Journal*
on application to
43 Gracechurch Street, London, E.C.

SMEDLEY'S HYDRO, MATLOCK. [Established 1853]

LARGEST AND MOST COMPLETE.

Resident Physicians: J. G. C. R. HARRISON, M.B., B.Ch., B.A.O. (R.U.L.)
R. MACLELLAND, M.D., C.M. (Edin.)

Unrivalled suites of Baths for Ladies and for Gentlemen, including Turkish and Russian
Baths, Aix and Vichy Douches, Massage and Weir Mitchell treatment, an Electric
Installation for Baths and Medical purposes, Dowsing Radiant Heat, D'Arsonval High
Frequency, Roentgen X-Rays Fango Mud, Nauheim Baths, etc. Special provision for
Invalids. Milk from own farm. Large Winter Garden. Night attendance. Rooms well
ventilated and all bedrooms warmed in Winter. A large Staff (upwards of 60) of trained
Male and Female Nurses, Masseurs, and Attendants.

Prospectus and full information on application to **H. CHALLAND, Managing Director.**
Telegrams—"SMEDLEY'S, MATLOCK." Telephone—No. 17.

**CATERHAM
SANITARIUM,**
Little Crook System. All
Baths, Massage, and Elec-
tricity. Bergonié Chair and
Diathermy. Telephone 88.
T.A. "Hydro," Caterham.
Resident Physician:
A. B. OLSEN, M.D., D.P.H.

BOURNEMOUTH HYDRO.

With finest Sun-lounges and Marine Balcony on the
South Coast.
Every kind of Bath.
Every kind of Massage.
Every kind of Electricity.
Every kind of Diet.
Carlbad and Vichy Waters, &c.
High Frequency. Electric Lift.
Prospectus from Secretary. Telep. 311.
Resident Physician:—**W. JOHNSON SMYTH, M.D.**

EPILEPSY.

THE LINGFIELD EPILEPTIC COLONY

has accommodation for over 300 Patients. This
includes a special School for children under the
Board of Education. There is also a well-equipped
Sanatorium, for the treatment of the more serious
cases.—For further information, apply to the
Resident Medical Superintendent, The Home-
stead, LINGFIELD, Surrey. Telephone: 18 LINGFIELD.

EPILEPSY.

THE DAVID LEWIS COLONY

has accommodation for Epileptic Patients
of good social position—for Ladies and
Gentlemen in special houses at the Colony
—for Boys at **COLTHURST HOUSE SCHOOL.**
Terms for Ladies and Gentlemen from 38/-
a week, Boys at the rate of 38/- a week.
For further information apply to the
Resident Medical Superintendent, David
Lewis Colony, near Alderley Edge, Cheshire.

Medical man receives one

good-class RESIDENT PATIENT (nervous,
borderland, or mental) Having had experience in
Institution work and with private patients, a cer-
tified or uncertified case received. Every comfort
and the interests of home life. Well-appointed
country house (billiard room), and farm land. Car-
riage riding, motor, golf, &c.—Dr. DUFF, Colling-
ton Rise, Bexhill-on-Sea, Sussex. Phone: 11 Cooden.

HOME FOR FEEBLE-MINDED.

BRUNTON HOUSE, LANCASTER.
There are now a few vacancies in this well-appointed
private establishment. It is easily accessible from
Lancaster, overlooks Morecambe Bay, and possesses
extensive gardens and grounds, with tennis and
croquet lawns. Varied scholastic and manual in-
struction. Individual attention is given to pupils by
experienced staff under a Resident Physician and
Lady Matron. Terms on application to—
Dr. W. H. COUPLAND.

"Tycos" Sphygmomanometer

for the quick and accurate determination of
both DIASTOLIC and SYSTOLIC readings of
Arterial Blood Pressure. From all reputable dealers.
Instrument on approval on receipt of card.—Parti-
culars free from **SHORT & MASON, LTD., Macdonald
Road, Walthamstow, E. 17.**

ST. GEORGE'S RETREAT.

Burgess Hill, Sussex.

An old-established licensed house under the man-
agement of the "Augustinian Sisters," for the
treatment of **LADIES MENTALLY AFFLICTED.**
Grounds nearly 300 acres. Drives and motoring.
Marine, Brighton Residence (for change). Voluntary
boarders taken. Visiting Physicians. London 11
hours.—For terms apply to the Superiores.
Telephone: (Post Office 90).
Telegrams: "Wivelsfield Green."

Home

for the care and treatment of

Mentally Afflicted Ladies.

OTTO HOUSE,

47, North End Rd., West Kensington, W. 14.

The Home stands in large grounds close to
West Kensington Station.

For Terms, apply to Miss BRODIE,
Resident Lady Superintendent.
Telephone: Hammersmith 1004.

MRS. SUTHERLAND,

(Licensed Proprietress).

2a, MARLOES ROAD, KENSINGTON, W. 8.

CHEADLE ROYAL HOSPITAL FOR MENTAL DISEASES, CHEADLE, CHESHIRE,

and its seaside branch.

CLAN-Y-DON, COLWYN BAY, NORTH WALES.
The object of the above is to provide the most
efficient means for the cure of mental diseases in
those who belong to the upper and middle classes.

Voluntary boarders as well as certified patients
are received for treatment.

For terms and further information apply to the
Med. Supt., W. SCOWEN, M.B., B.S., &c., at Cheadle,
or he may be seen at 72, Bridge St., Manchester, on
Tuesdays and Fridays from 2 to 3.
TEL.: 208 "Cheadle Hulme." 3594 "Manchester."

Coton Hill Mental Hospital,

near Stafford.

Chairman of the Committee of Management, The
RIGHT HONOURABLE THE EARL OF DARTMOUTH.—
This Hospital, which is beautifully situated in a
high and healthy position, with extensive grounds,
cricket field, lawn tennis courts, golf links, &c., is
devoted to the care and treatment of the mentally
afflicted of the upper and middle classes. Terms on
application. Private rooms with special attendants
in the Hospital, or semi-detached villas in the
grounds can be arranged.

For further particulars apply to R. W. HEWSON,
L.R.C.P. & S. Edin., Medical Superintendent

NEWMAINS RETREAT, NEWMAINS, LANARKSHIRE,

Licensed under the Inebriates Acts.

The House is devoted to the care of LADIES of the upper classes only, who can be treated either under the Acts or as Voluntary Patients. The place stands high and the estate is extensive, with bracing air and in good shelter. It is very retired and beautiful, well situated for the treatment of Inebriety, Narcomania and other perversions, Neurasthenia, Hysteria, and Minor Mental Ailments.

No patient under Certificate of Insanity can be received.

References:—Dr. G. M. ROBERTSON, Dr. YELLOWFISHES, Dr. RICHIE RUSSELL, Dr. OSWALD, and others.

Terms and particulars on application to "Superintendent, The Retreat, Newmains, Lanarkshire." Nearest Station: Hartwood, Cal. Rly.

INEBRIETY.

CLYMPLE HOUSE, RICKMANSWORTH, HERTS.

For the treatment of gentlemen under the Act and privately. Established 1883 by an Association of prominent medical men and others for the study and treatment of Inebriety; profits, if any, are expended on the Institution. Large secluded grounds on the bank of the River Colne. All kinds of outdoor and indoor recreations and pursuits.

For further particulars, apply to F. S. D. Hogg, M.R.C.S., &c., Resident Medical Superintendent. Telephone: 16 Rickmansworth.

INEBRIETY.

MELBOURNE HOUSE, LEICESTER. PRIVATE HOME FOR LADIES.

Med. Attendant: R. SEVETRE, M.A., M.D. Cantab. Prin.: Hy. M. RILEY, Assoc. Soc. Study of Inebriety. 30 years' experience. Excellent Med. References.

For terms and Particulars apply Miss RILEY or PRINCIPAL. Telegrams: "MEDICAL, LEICESTER." Nat. Telephone: 769.

MIDDLETON HALL, MIDDLETON ST. GEORGE,

Near DARLINGTON, Co. DURHAM.

Private house for the care and treatment of ladies and gentlemen suffering from mental diseases.

This house, which is situated in a healthy and pleasant country, has been recently erected from plans approved by the Commissioners in Lunacy, and has been comfortably furnished throughout. Private rooms and special attendants are provided if required.

Terms to be had on application to the "Medical Officer."

Telegraphic Address, "RELIEF, OLD CATTON." Telephone, 250 NORWICH.

Nervous and Mental Affections.

LADIES ONLY RECEIVED.

THE GROVE, OLD CATTON, Near NORWICH.

A High-class Home for the Curative Treatment of Nervous Affections. Situated a mile from the City of Norwich. Special and Separate accommodation is provided for those suffering from Hysteria, and for cases of Insipient Mental trouble who can be received as Voluntary Boarders without certificates, and occupy their own private suites of apartments. A staff of experienced nurses has been organised to take charge of patients in their own homes. For terms, &c., which are moderate and inclusive, apply to the Misses McLINTOCK, or to CHAS. A. P. OSBURN, F.R.C.S.E., Medical Superintendent.

CLARENCE LODGE, CLARENCE ROAD, CLAPHAM PARK, S.W. 4.

Stations: Clapham Road and Clapham Common. LICENSED HOME FOR MENTAL & NERVOUS PATIENTS.

Twelve Ladies only received for treatment under eminent Specialist, and given individual care and the comforts of their own homes. Suitable cases received as Voluntary Boarders.

The House is surrounded by well-wooded grounds, shady lawns for tennis, croquet, &c. Associated rooms, private rooms, or suites; moderate terms. Illustrated prospectus from Resident Licensor, Mrs. THWAITES. T/N. : 494. Brighton.

STRETTON HOUSE,

Church-Stretton, Shropshire.

A Private HOME for the treatment of Gentlemen suffering from Mental diseases. Bracing hill country. See "Medical Directory," p. 1899.—Apply to Medical Superintendent. Phone 10 P.O. Church-Stretton.

NORTHUMBERLAND HOUSE, GREEN LANE, FINSBURY PARK, N.

A PRIVATE HOME for the treatment of Ladies and Gentlemen suffering from Mental and Nervous Affections.

Highly situated, facing Finsbury Park. Voluntary Boarders received without certificates. For particulars apply to the Resident Physician.

Telephone No. 888 (North). Telegrams: "Subsidiary, London."

ST. ANDREW'S HOSPITAL.

FOR MENTAL DISEASES

NORTHAMPTON.

For the Upper and Middle Classes only.

President—The Rt. Hon. THE EARL SPENCER, K.G. This Registered Hospital is pleasantly situated in 118 acres of park and pleasure grounds.

Every facility is provided for cricket, football, hockey, croquet, lawn tennis, bowls, golf, motoring, boating and gardening.

Terms from 3/6 a week. Voluntary boarders not under certificates are received.

Patients paying higher rates can have Special Attendants, Horses and Carriages, and Private Rooms in Villas in the Hospital Grounds, or at

MOULTON PARK,

a branch establishment, two miles from the Hospital, where there is a farm of 478 acres, which supplies the Hospital with meat, milk, and other farm produce.

BYRN-Y-NEUADD HALL, LLANFAIRFECHAN.

The Seaside House of St. Andrew's Hospital, is beautifully situated in a Park of 331 acres, close to the sea, and in the midst of the finest scenery in North Wales.

Patients can enjoy good cricket, lawn tennis, croquet, golf, trout fishing and bathing.

Patients or Boarders may visit this branch for long or short periods, and can have Private Rooms in Villas in the Park.

For particulars apply to the Medical Superintendent, St. Andrew's Hospital, Northampton. TELEPHONE No. 56.

BROOKE HOUSE, CLAPTON, LONDON, N.

A HOME for the treatment of a limited number of Ladies and Gentlemen suffering from Nervous and Mental Diseases.

Stands in extensive grounds, and is well adapted for the treatment of Nervous disorders according to modern methods.

Resident Physician—GERALD JOHNSTON. Railway Station: Clapton. Telephone: 1648 Dalston.

SOUTH DEVON.

COURT HALL, KENTON, Near EXETER.

Private licensed house for the treatment of MENTAL DISEASES. Limited to eight lady Patients. Established 50 years.

Resident Physician BERTHA MILES, M.D. Terms on application. Telephone: Starcross 19.

Grove House, All Stretton, Church-Stretton, Shropshire.

A Private HOME for the care and Treatment of a limited number of ladies mentally afflicted. Climate healthy and bracing. Proprietor, Dr. MCCLINTOCK.

SPRINGFIELD HOUSE, Near BEDFORD.

(Telephone No. 17.)

A PRIVATE HOME FOR MENTAL CASES,

TERMS FROM 35 GUINEAS PER WEEK. (Including Separate Bedrooms for all Suitable Cases without extra charge).

For forms of admission, &c., apply to the Drs. BOWER, as above, or at 5, Duchess Street, Portland Place, W. 1, on Tuesdays, from 4 to 5.

THE MOAT HOUSE, Tamworth, Staffordshire.

A HOME FOR NERVOUS AND MENTAL CASES. Stations: L. & N. West. and Mid. Railways.

The House stands in grounds of ten acres (within five minutes' drive of either station), and is devoted to the care and treatment of a few Ladies suffering from Nervous and Mental Affections, who enjoy the comfort, privacy, and occupations of home life. Voluntary patients received without certificates.—For terms, &c. apply to Resident Licensees, EDWARD HOLLIS, M.A. Cantab., or (Mrs.) S. A. MICHAUX.

In Beautiful Country. 18 miles from London. Littleton Hall, Brentwood, Essex.

(400 feet above sea-level). A HOME for a few LADIES Mentally Afflicted. Voluntary Boarders received. Large grounds. Liverpool Street half-an-hour. Stations: Brentwood, 1 mile; Shenfield, 1 mile. Vacancy. For terms, &c., apply Dr. HAYNES. Telephone & Telegrams: "Haynes, Brentwood, 45."

Glendossil and Hurst Houses.

Considerable improvements have recently been made in both these Houses. They are in every way adapted for the care and treatment of the mentally afflicted of the upper and middle classes.—Apply, S. H. AGAR, Henley-in-Arden, Medical Superintendent.

TWILIGHT SLEEP.

ST. FAITH'S NURSING HOME, Ealing, is devoting one house to Maternity Patients for the successful, painless, and safe Twilight Sleep Treatment. Long established with wide and successful experience. The other receives Rest-Cure and all non-infectious cases, chronic and acute. Electrotherapy. Skilled nursing. Warmth and comfort. Quiet. Highly recommended.

Telephone 1485 Ealing.

CITY OF LONDON MENTAL HOSPITAL DARTFORD, KENT.

Under the management of a Committee of the Corporation of the City of London.

Private patients are received at the rate of 21s. 6d. and upwards per week.—Apply to the—MEDICAL SUPERINTENDENT.

BOREATTON PARK, BASCHURCH, SALOP.

A first-class Country Mansion especially adapted for the reception of a limited number of Ladies and Gentlemen mentally affected.

For particulars apply Dr. SANKEY.

THE GRANGE, Near ROTHERHAM.

A HOUSE licensed for the reception of a limited number of ladies of unsound mind. Both certified and voluntary patients received. This is a large country house with beautiful grounds and park, 5 miles from Sheffield. Station, Grange Lane, G.C., Railway, Sheffield. Telephone No. 34, Rotherham. Resident Physician—GILBERT E. MOULD, L.R.C.P., M.R.C.S. Consulting Physician—CROCHLEY CLAPHAM, M.D., F.R.C.P.E.

BARNWOOD HOUSE

HOSPITAL FOR MENTAL DISEASES, BARNWOOD, near GLOUCESTER

Telephone No. 7 Barnwood.

Exclusively for PRIVATE PATIENTS of the UPPER AND MIDDLE CLASSES.

This institution is devoted to the care and treatment of persons of both sexes at moderate rates of payment.

Under special circumstances the rates of payment may be reduced by the Committee.

For further information apply to JAMES GREIG SOUTAR, M.B., the Medical Superintendent.

WYE HOUSE, BUXTON.

For the treatment of Ladies and Gentlemen mentally afflicted. Voluntary Boarders received. Situated 1,200 ft. above sea level, facing S.; 14 acres of ground.—For terms apply to the Resident Medical Superintendent, W. W. HORTON, M.D. Nat. Tel. 130.

BISHOPSTONE HOUSE, BEDFORD.

PRIVATE HOME for MENTALLY AFFLICTED LADIES. Ten only received. Terms from 5 guineas weekly. Apply, "Medical Officer," or Mrs. PERKINS. Telephone 708.

CAMBERWELL HOUSE, 33, PECKHAM ROAD, S.E.

Telegrams: "Psycholla, London."

Telephone: New Cross 1057.

For the Treatment of Mental Disorders.

Completely detached villas for mild cases. Voluntary Boarders received. 20 acres of grounds. Cricket, tennis, croquet, squash, racquets, bowls, and all indoor amusements. Senior Physician: FRANCIS H. EDWARDS, M.D., M.R.C.P. An Illustrated Prospectus, giving full Particulars and Terms, may be obtained on application to the SECRETARY.

HOVE VILLA, BRIGHTON.—A Convalescent Branch of the above.

NORTHWOODS HOUSE, WINTERBOURNE, near BRISTOL.

FOR PRIVATE TREATMENT OF MENTAL DISEASES.

Situated in a large park in a healthy and picturesque locality, easily accessible by rail via Bristol, Winterbourne, Patchway, or Yate Stations. Uncertified Boarders received.—For further information see Medical Directory, page 2053. Terms moderate. Apply to Dr. J. D. THOMAS, Resident Physician and Licensee, for full particulars.

PECKHAM HOUSE,

(ESTABLISHED 1826).

112, PECKHAM ROAD, LONDON, S.E.

Telegrams: "Alleviated, London."

Telephone: New Cross 578.

An Institution licensed for the CARE and TREATMENT of THE MENTALLY AFFLICTED of Both Sexes. Conveniently situated. Electric trams and omnibuses from the Bridges and West End pass the House. Private Houses, with electric light, for suitable cases adjoining the Institution. Holiday Parties sent to the Seaside Branch at Worthing during the Summer months.

MODERATE TERMS.

Apply to MEDICAL SUPERINTENDENT for fuller particulars.

THE ROYAL EARLSWOOD INSTITUTION FOR MENTAL DEFECTIVES.

(Formerly the EARLSWOOD ASYLUM.)

REDHILL, SURREY.

FOR THOSE REQUIRING CONTROL with EXPERT SUPERVISION, and needing SPECIAL TRAINING in useful occupations. SCHOOLS, FARMING, and various TRADE WORKSHOPS.

E. C. P. HULL, Esq., J.P., Treasurer. SELECTED CASES admitted on reduced inclusive fees. THOSE UNABLE TO PAY admitted by votes of Subscribers, with part-payment towards cost.

RECREATIONS: ALL outdoor games, EXCELLENT BAND by Male Staff, for Concerts, Dancing, &c.

Apply: THE MEDICAL SUPERINTENDENT, Earlswood, Redhill, Surrey, or to the Secretary, Mr. HARRY HOWARD, 14-16, Ludgate Hill, London, E.C. 4.

Telephone: Redhill 344.

Telephone: City 5297.

HAYDOCK LODGE, Newton-le-Willows, LANCASHIRE.

A PRIVATE MENTAL HOSPITAL FOR THE UPPER AND MIDDLE CLASSES ONLY, EITHER VOLUNTARY, OR UNDER CERTIFICATE.

Patients treated and classified according to their social and mental condition. Terms from £2 2s. 0d. Private apartments on special terms.

Established for 60 years. Under the same management 25 years. Recovery rate 50 per cent. Situated midway between MANCHESTER and LIVERPOOL. Two miles from Newton-le-Willows Station on the L. & N. W. Railway, connecting it with all parts.

Medical Staff.

Resident Medical Proprietor CHAILES T. STREET, M.R.C.S., L.R.C.P., LIVERPOOL: 47, Rodney Street. MANCHESTER: Winter's Buildings, St. Ann's St. Resident Medical Superintendent J. C. WOOLTON, M.R.C.S. ENG., L.R.C.P. LOND. Dr. STREET, Thursday: 2 till 4. Dr. P. G. MOULD; Dr. G. B. MOULD, Tuesday and Visiting & Sir JAMES BARR, LL.D., M.D., F.R.C.P., 72, Rodney St., Liverpool. Telephone 2456 Royal. Thursday 12 to 1.30. Telephone 7611 Manchester. Consulting W. B. WARRINGTON, M.D., F.R.C.P., 63, Rodney St., Liverpool. Liverpool. Other days by appointment. Physicians G. E. MOULD, Physician for Mental Disease; to the Sheffield Royal Hospital, The Grange, Rotherham. For further particulars and forms of admission apply Resident Proprietor, Haydock Lodge, Newton-le-Willows. Tele: "STREET, Ashton-in-Makerfield." Tel.: 11 Ashton-in-Makerfield.

THE COPPICE, NOTTINGHAM.

HOSPITAL FOR MENTAL DISEASES.

President: The Right Hon. the EARL MANVERS.

This Institution is exclusively for the reception of a limited number of Private Patients of both sexes, of the Upper and Middle Classes, at moderate rates of payment. It is beautifully situated in its own grounds on an eminence a short distance from Nottingham, and from its singularly healthy position and comfortable arrangements, affords every facility for the relief and cure of those mentally afflicted.

For terms, &c., apply to the Medical Superintendent.

SHAFTESBURY HOUSE, FORMBY-BY-THE-SEA, LANCASHIRE.

For the CARE and TREATMENT of Ladies and Gentlemen MENTALLY AFFLICTED, with or without certificates. Consultations at 31, Rodney Street, Liverpool, every Monday and Thursday afternoons by appointment. For terms apply MEDICAL SUPERINTENDENT. Tel. No. 8 Formby.

BRIGHTON.

CHARMING RESIDENCE (4 acres pleasure grounds), Massage, Electrical, Nervous Diseases, Chronic, Convalescent, and Rest Cure Cases received. Bungalow in grounds suitable for any case.—Dr. HOLMES MEYRICK, Sylvan Hall, Upper Lewes Road. Telephone: 362 Brighton.

MALLING PLACE, KENT.

BEAUTIFUL SEVENOAKS DISTRICT. Easy from town or Coast. Both sexes, mentally unsound, received under perfect condition of treatment. Tel. and Teleg.: Adam, 2, Malling; London, 26, Harley Street.

Nerve and Mild Mental

CASES received, under medical supervision, in well appointed HOME, standing in secluded grounds, in healthy situation.—For full particulars, apply Dr. MANSELL, Beechfield, Bramley Hill, South Croydon. Tel: Croydon 1915.

A PERFECT HEALTH RESORT, TENBY IN WEST WALES.

Finely situated on Carmarthen Bay. Miles of golden sands. Mediterranean climate.

First-class hotels and apartments offering Special Winter Terms.

18 Holes Golf Course on Sand Burrows. Up-to-date Clubs for Visitors, Hunting, Sea Fishing.

Unequaled for a restful holiday.

Illustrated Guide from Town Clerk.

DUFF HOUSE, Banff, Scotland,



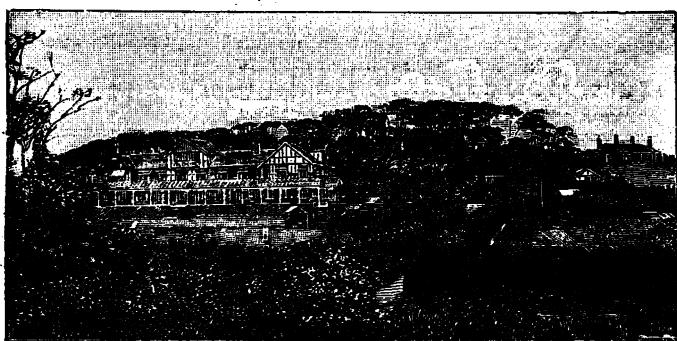
a former home of H.R.H. the Princess Royal and His Grace the late Duke of Fife, is now open to receive Patients suffering from

DISORDERS OF THE STOMACH AND INTESTINES, DIABETES,

and other complaints which need skilled chemical investigation and dietetic treatment.

The House is fitted with Laboratories, X-ray Installation, Medical Baths and Lifts. The climate is mild, and the rainfall the lowest in Scotland.

The Staff includes Physicians who have had special experience of Chemical Pathology, Dietetics, and X-ray work, an Analytical Chemist, a Radiographer, Matron, fully-Trained Nurses, Masseurs, and Masseuses.



MUNDESLEY SANATORIUM.

Specially built for the Treatment of Pulmonary and other forms of Tuberculosis. Aspect S.S.W., on a carefully chosen site. Pure, bracing air. High sunshine record. One mile from the coast. Electric light throughout. Full Nursing Staff.

Resident Physicians { S. VERE PEARSON, M.D.(Camb.), M.R.C.P. (Lond.)
MAURICE F. SQUIRE, M.D.(Durh.).

For prospectus and full particulars apply the SECRETARY, Sanatorium, Mundesley, Norfolk.

MENDIP HILLS SANATORIUM, FOR THE OPEN-AIR TREATMENT.

Specially built, facing South. 300 acres of Sanatorium grounds—meadow and woodland; sheltered pine avenues. Altitude 800 feet, magnificent view for miles South; hot-water radiators and electric light. Special features are breathing, singing, and graduated exercises, walking and tramping; continuous inhalation; decided success; electric treatment. Individual attention. *Resident Physician*—C. MUTHU, M.D., M.R.C.S., L.R.C.P.

Terms from 3½ Guineas weekly.

For particulars, apply, SECRETARY, Hillgrove, Wells, Somerset.

VALE OF CLWYD SANATORIUM.

This Sanatorium is established for the treatment of Tuberculosis of the Lungs and of the Pleural Cavities. It is situated in the midst of a large area of park-land at a height of 450 feet above sea level, on the south-west slopes of mountains rising to over 1,800 feet, which protect it from north and east winds and provide many miles of graduated walks with magnificent views.

Fully-trained Nurses. Nurse on duty all night. X-Ray apparatus newly installed. Every facility for treatment by Artificial Pneumothorax. Electric lighting and hot water radiators in each room.

Medical Superintendent: H. MORRISTON DAVIES, M.D.Cantab., F.R.C.S.

For particulars apply to Medical Superintendent, Llanbedr Hall, Ruthin, N. Wales.

MATLOCK SANATORIUM

Situated on the edge of the mountain limestone area of Derbyshire, over 700 ft. above sea-level. The buildings face south and command beautiful views, while on the north and east they are sheltered by lofty hills. The surrounding country is well known for its great beauty and interest. The climate is dry and bracing. The buildings are lighted by electricity and heated by radiators.

Treatment is carried out on modern lines, all special methods being available in suitable cases. A new X-ray apparatus has been installed and there is a complete equipment for the carrying out of up-to-date methods in all tubercular and other pulmonary cases.

For particulars apply to FREDK. KINCAID, M.R.C.S., L.R.C.P., Medical Superintendent, Matlock Sanatorium, Matlock, Derbyshire.

Telephone and Telegraph: Sanatorium, Matlock, 22.

PINEWOOD SANATORIUM, WOKINGHAM, BERKS.

Specially built for the purpose of the open-air treatment of early cases of Pulmonary Tuberculosis; in the midst of a Pine forest, on sandy and gravel soil—all rooms face South. Male Patients only.

Sixty-four beds—two resident physicians (both British); about 30 miles from London. Terms 4 guineas a week.—Apply to the Medical Superintendent. Telegrams, Sanatorium, Crowthorne; Telephone, 34, Crowthorne.

Functional Nervous Diseases,
WAR SHOCK AND NEURASTHENIA.
Patients of limited means received for rest and treatment. Terms on pension 3 to 6 guineas.
—For particulars of Electrical and Psychological treatment apply SECRETARY, Medico-Psychological Clinic, 30, Brunswick Square, W.C.

Dr. Mercier strongly
recommends the Misses FORD'S NURSING HOME at Parkstone, Bournemouth, for CONVALESCENTS, NEURASTHENICS, DIABETICS, and all cases needing dieting, assiduous attention, and competent nursing.

Resident Patients.—Doctor
has a vacancy in his large Country House, Surrey, for a mild Mental, Borderland or Nervous case. Delightful grounds, over 20 acres, small farm, own poultry, fruit and vegetables. Tennis, croquet, bowls, golf, bridge, and music. Terms from 5 gns. weekly. —Address, No. 128, B.M.J., 429, Strand, W.C.2.

GRAMPIAN SANATORIUM KINGUSSIE, INVERNESS-SHIRE.

Specially built for the Open-Air Treatment of Tuberculosis, and opened in 1901. Bracing mountain air. Elevation 860 feet above sea-level. Sheltered situation in pine wood. Graduated walks. Electric light throughout building and in shelters. Inoculation Treatment available for patients—18 beds.
Resident Physician.
For further particulars apply WALTER DE WATTEVILLE, M.D., Kingussie, N.B., Medical Director.

DROITWICH BRINE BATHS.

WARNING.

The Public are warned that the full benefits of the treatment for Rheumatism and kindred complaints CAN ONLY BE OBTAINED IN THE NATURAL BRINE BATHS AT DROITWICH, FOR WHICH THERE IS NO SUBSTITUTE. Nauheim Baths on the most approved principles. Aeration Baths (the most recent adaptation of the celebrated French Whirlpool System). Lovely Holiday District. Good Hotels, &c.
Illustrated Booklet post free from
J. H. HOLLYER,
15, Corbett Estate Offices, Droitwich (Worcs.), SPECIAL FACILITIES TO MEDICAL MEN.

London Fever Hospital,

Liverpool Road, Islington, N.
For the treatment of non-pauper patients suffering from infectious fever. Part of the cost is paid by the patient, the balance being found by the Hospital.

There are a few private rooms at 5½ guineas a week, payable weekly in advance.
No aid is received from the rates. Subscribers' domestic servants removed at small cost and treated free of charge. For admission, apply to the Secretary.
W. CHRISTIE, Major.

EDUCATION.-DAUGHTERS

of Medical men special terms. Excellent School. Residential Pupils only. Illustrated Prospectus from PRINCIPAL, MARLBOROUGH COLLEGE, TYTHERINGTON HALL, via MACCLESFIELD, CHESHIRE.

OUR DAUGHTERS AS HOMEMAKERS.

Practical training in Housewifery, Cooking, etc. Certificates. Moderate fees.—PRINCIPAL, MARLBOROUGH COLLEGE, TYTHERINGTON HALL, via MACCLESFIELD, CHESHIRE.

The Grange, Buxton.—

SCHOOL FOR GIRLS from 10 to 16 years. Thorough general education, with great attention to health. Elder girls may specialise in Art, Music, Literature, or Languages. New Domestic Science branch for girls over 18. Tennis courts and field for Hockey and Cricket. Prep. for Exams.—Principal, Miss L. C. Dodd.

WHICH SCHOOL?

IF SEEKING A BOARDING SCHOOL or TUTOR, THE EDUCATIONAL CONSULTANTS send exclusive, reliable information free. Mention age of pupil, district favoured and approx. fees.—Address, E.B. J. BURROW, Ltd., 57, Norwich House, High Holborn, London, W.C. 1.

*Phone—Museum 2362.

POST-GRADUATE STUDY.

London School of Clinical Medicine.
OPERATIVE SURGERY ONLY AT PRESENT.
C. C. CHOYCE, Dean.

KENT COAST.

A number of SCHOOLS are returning to the Kent Coast in time to Re-open in January. Prospectuses and full particulars on receipt of detailed statement of requirements.
J. & J. PATON, 143, Cannon St., London, E.C. 4.

POST-GRADUATE COLLEGE, WEST LONDON HOSPITAL, HAMMERSMITH, W. 6.

The Hospital Practice is reserved exclusively for Post-graduates, and a Reading and Writing Room is provided for them. For prospectus apply the DEAN.

F.R.C.S. Edin.

The TUTORIAL CLASS for the next Examination will commence shortly. Correspondence Tuition if desired.—For particulars apply FRED. GRAHAM, M.D., F.R.C.S. Ed., 16, Mayfield Gardens, Edinburgh.

VALUABLE BOOK FREE!

Are you preparing for any Medical or Surgical Examination?

Send Coupon below for our valuable publication

"Guide to Medical Examinations."

PRINCIPAL CONTENTS

The Examinations of the Con-joint Board.
The M.B. and M.D. Degrees of all British Universities.
How to pass the F.R.C.S. Exam.
The M.S. Lond. and other Higher Surgical Examinations.
The M.R.C.P.
The D.P.H. and how to obtain it.
The Diploma in Tropical Medicine

Do not fail to get a copy of this Book before commencing preparation for any Examination. It contains a large amount of valuable information.

Send for your Copy now!

The Secretary.
MEDICAL
CORRESPONDENCE
COLLEGE,
3, Wimpole Street,
Cavendish Square,
London, W. 1

Sir,—Please send me a copy of your "Guide to Medical Examinations" by return.

Name.....

Address.....

Examination in which interested.....

CHANGE OF ADDRESS

AND TELEPHONE.

Laboratories of Pathology and Public Health.

6, HARLEY STREET, W. 1.

LONDON SCHOOL OF TROPICAL MEDICINE

The School will open for Study on the 15th January. For prospectus and further particulars, apply to Col. A. ARCOCK, O.I.E., I.M.S., London School of Tropical Medicine, Connaught Road, Albert Dock, E., or to the Secretary, Seamen's Hospital, Greenwich.

WHY WORRY SEEKING A SCHOOL?

Information and Prospectuses Free. Any locality (Boys, Girls). State age, requirements, some idea fees.—Secretary, SCHOOLS AGENCY, 62, King Street, Manchester.

F.R.C.S. (Edin.)

A TUTORIAL CLASS for the next Examination commences shortly.

Particulars from CHAS. R. WHITTAKER, F.R.C.S., Anatomical Department, Surgeons' Hall, Edinburgh.

ANSTAY PHYSICAL TRAINING COLLEGE, BERDINGTON,

offers well-educated Women complete Teacher's Training in SWEDISH EDUCATIONAL GYMNAS-TICS, MEDICAL GYMNAS-TICS AND MASSAGE, DANCING in all its Branches, GAMES, SWIMMING, ANATOMY, HYGIENE, &c.
Residential Fees £100 a year. Three years' Course.
GOOD APPOINTMENTS AFTER TRAINING.

UNIVERSITY EXAMINATION POSTAL INSTITUTION.

17, RED LION SQUARE, LONDON, W.C. 1.

18 Medical Tutors, including 9 Gold Medalists.
(Principal: Mr. E. S. WEYMOUTH, M.A. Lond.)
POSTAL OR ORAL PREPARATION
FOR ALL MEDICAL EXAMINATIONS
SOME RECENT SUCCESSES.

M.D. (Lond.), 1901-18; (6 Gold Medalists during 1913-18) 230

M.S. (Lond.), 1902-17 (including 3 Gold Medalists) 16

M.B., B.S. (Lond.), Final 1906-18 (Besides 19 who tried part only) 83

Primary F.R.C.S. (Eng.), '06-18 51

Final F.R.C.S. (Eng.), 1906-17. Including 5, May 1914, Exam - 29

M.R.C.P. (Lond.) 1914-18 - 23

D.P.H., (Various) 1906-18 143

F.R.C.S. (Edin.), 1906-18 (3 entered 1914 All successful) 13

M.R.C.S., L.R.C.P. Final 1906-18 (Besides 18 who tried part only) 110

M.D. (Durh.) (Practitioners) '06-18 24

M.D. (Various). By Thesis. Legitimate assistance. Moderate fees. Numerous successes. 5 successful Edin. M.D., July, 1913, including 3 "commended."

Also B.T.M., L.M.S.S.A., M.B. (Camb., &c.) Triple Qualification, &c.

Medical Prospectus (38 pages) and General Prospectus with names of Tutors, on application.

MEDICAL PRELIMINARY ARTS AND SCIENCE (POSTAL OR ORAL).

Apply to the Principal of the Institution, Mr. E. S. WEYMOUTH, M.A., 17, Red Lion Square, W.C. 1

DIPLOMA IN PUBLIC HEALTH. UNIVERSITY OF CAMBRIDGE.

LECTURES and PRACTICAL INSTRUCTION in the subjects of the Examination will begin 15th JANUARY and 23rd APRIL, 1919, at the UNIVERSITY LABORATORIES, PEMBROKE STREET, CAMBRIDGE.

Hygiene, Chemistry, and Physics: Mr. J. B. PURVIS, M.A.

Bacteriology and Preventive Medicine: Dr. GRAHAM-SMITH.—Special Lectures by Professor NUTTALL, F.R.S., on Protozoal Diseases, and by Dr. SHIPLEY, F.R.S., on Animal Parasites.

Practical Sanitary Administration, Hospital Administration, School Hygiene, Sanitary Law, &c.: Dr. LAIRD, M.O.H. for Cambridge, and Dr. ROBINSON, M.O.H. for the Cambridgeshire County Council.

Further particulars may be obtained from Mr. J. B. PURVIS, Corpus Christi College, Cambridge.

SCHOOLS for BOYS and GIRLS, TUTORS for ARMY, and ALL EXAMS.

Messrs. J. & J. PATON, having an intimate, unique, and up-to-date knowledge of the Best SCHOOLS and TUTORS in this country, will be pleased to AID PARENTS in their choice by sending (free of charge) prospectuses and TRUSTWORTHY INFORMATION regarding ESTABLISHMENTS which can be THOROUGHLY RECOMMENDED.

The age of the pupil, district preferred, and rough idea of fees should be given. Phone, write, or call. J. & J. PATON, Educational Agents, 143, Cannon Street, London, E.C. 4. Telephone 5053 Central.

Queen Charlotte's Lying-in HOSPITAL and MIDWIFERY TRAINING SCHOOL, Marylebone, N.W.

Medical Pupils admitted to the Practice of this Hospital. Unusual opportunities are afforded of seeing obstetrical complications and operative midwifery, about one-half the total admissions being primiparous ones. Certificates awarded as required by the various Examining Bodies.

Pupils trained for Midwives and Monthly Nurses. On being found competent, each pupil is awarded a Certificate of efficiency. Special preparation for examination for Central Midwives Board. For rules, fees, &c., apply to

ARTHUR WATTS, Secretary.

THE UNIVERSITY OF LIVERPOOL.

FACULTY OF MEDICINE.

LENT TERM BEGINS 9th JANUARY, 1919.

THE MEDICAL SCHOOL provides complete courses of instruction for the Examinations of the University of Liverpool and also meets the requirements of the University of London and other Universities and Examining Bodies in the United Kingdom.

The DENTAL SCHOOL offers complete courses of instruction in the subjects for the degrees and diplomas conferred by the University and other Examining Bodies. The New Dental Hospital was opened in January, 1910.

Other Schools in the Faculty are:—The School of Hygiene, the School of Tropical Medicine, the School of Medicine and Surgery, and the School of Veterinary Science.

DEGREES AND DIPLOMAS IN THE FACULTY OF MEDICINE.

Bachelor of Medicine & Bachelor of Surgery	- M.B., Ch.B.	Master of Veterinary Science	- - - M.V.Sc.
Doctor of Medicine	- - - M.D.	Doctor of Veterinary Science	- - - D.V.Sc.
Master of Surgery	- - - Ch.M.	Licence in Dental Surgery	- - - L.D.S.
Master of Hygiene	- - - M.H.	Diploma in Public Health	- - - D.P.H.
Bachelor of Dental Surgery	- - - B.D.S.	Diploma in Tropical Medicine	- - - D.T.M.
Master of Dental Surgery	- - - M.D.S.	Diploma in Veterinary Hygiene	- - - D.V.H.
Bachelor of Veterinary Science	- - - B.V.Sc.		

Practical Classes in the University are conducted in the following Laboratories, all of them modern buildings, fully equipped in every respect:—Laboratories of Inorganic, Organic, and Physical Chemistry; the Hartley Botanical Laboratory; the George Holt Physics Laboratory; the Zoological Laboratory; the Anatomical Dissecting Room; the Thompson Yates Laboratories of Physiology and Pathology; the Johnston Laboratories of Tropical Medicine and Bio-chemistry; the Laboratory of Hygiene.

The Museums of the Faculty are:—The Chemical Museum; the Museum of Botany; the Zoological Museum; the Anatomical Museum; the Pathological Museum; the Museum of Comparative Pathology; the Museum of Materia Medica; the Museum of Midwifery and Gynaecology; the Museum of Hygiene; and the Museum of Forensic Medicine.

FELLOWSHIPS, SCHOLARSHIPS, EXHIBITIONS, AND PRIZES IN THE FACULTY.

Holt Fellowship in Physiology	- - - £100	John Rankin Exhibition in Practical Anatomy	- - - £15
" " Pathology	- - - £100	Clinical School Exhibition	- - - £5 5s.
Robert Gee Fellowship in Anatomy	- - - £100	Robert Gee Prize (Diseases of Children)	- - - £4 4s.
Alexander Fellowship in Bacteriology and Pathology	- £100	Dental Operating Prizes (Senior)	- - - £2 2s.
Johnston Colonial Fellowship in Bio-Chemistry	- £100	" " (Junior)	- - - £3 3s.
J. W. Garrett International Fellowship in Bacteriology	- - - £100	Orthodontia Prize (Senior)	- - - £1 1s.
Ethel Boyce Fellowship in Gynaecology	- - - £100	" " (Junior)	- - - £2 2s.
Thelwall Thomas Fellowship in Surgical Pathology	- £100	Ash's Prize (Dental Surgery)	- - - £2 2s.
Mary Birrell Davies Scholarship, tenable for 4 years	- £60	Torr Gold Medal (Anatomy)	- - - £2 2s.
Robert Gee Scholarships (two)	- each £50	Holt Medal (Physiology)	- - - £2 2s.
Lyon Jones Scholarships (two)	- each £42	Kanthack Medal (Pathology)	- - - £2 2s.
University Scholarship for Medical Students	- £25	Owen T. Williams Prize	- - - £2 2s.
University Scholarship for Dental Students	- £20	Thomas H. Bickerton Prize for Dental Students	- - - £2 2s.
Derby Exhibition	- £15	William Mitchell Banks Bronze Medal (Descriptive Anatomy)	- - - £2 2s.

There are also numerous Entrance Scholarships, particulars of which may be had on application.

For information on all matters concerning the curriculum, application should be made to the Dean of the Faculty of Medicine, at the University.

THE CLINICAL SCHOOL.

The following Hospitals form the Clinical School of the University:—

General Hospitals—The Royal Infirmary.
The David Lewis Northern Hospital.
The Royal Southern Hospital.
The Stanley Hospital.

Special Hospitals—The Infirmary for Children.
The Hospital for Women.
The Eye and Ear Infirmary.
St. Paul's Eye Infirmary.
St. George's Hospital for Skin Diseases.

The Hospitals contain 1,134 beds—851 in the General, and 283 in the Special Hospitals.

The School therefore provides exceptional advantages for Clinical Instruction.

Infectious Diseases are studied in the City Hospitals, and Lunacy work at the County Asylum, Rainhill.

Twenty Resident Appointments are made as a rule every six months, fourteen with salaries ranging from £60 to £100 per annum.

THE DENTAL HOSPITAL, affiliated to the University for purposes of instruction in Dental Surgery, is situated in close proximity to the University. Over 30,000 were treated in the Hospital during the past year, and the new building possesses a complete modern equipment for instruction in Dental Surgery.

RESIDENCE.

Students not living at home are recommended to reside in lodgings which are on the registered list kept by the Registrar, who will furnish information to applicants.

J. S. MACDONALD, *Dean.*

Wanted immediately, in a
large private and panel Practice in a Lan-
shire manufacturing town, a qualified indoor
ASSISTANT, British, single and energetic, not
over 35 years of age. Salary £350 p.a. Partnership
will be offered to a satisfactory man after a few
months' preliminary assistantship.—Address, giving
full particulars and references, No. 4812, BRITISH
MEDICAL JOURNAL Office, 429, Strand, W.C. 2.

Wanted Assistant, Junior.—
British. Salary £100 per annum, with
rooms, coal, gas, and attendance: 10s. extra for
midwifery cases.—Apply Dr. A. H. JAMES, The Park,
Blenarney.

Wanted Assistantship or
LOCUM. Free now. Highest references.
Address, No. 5007, BRITISH MEDICAL JOURNAL
Office, 429, Strand, W.C. 2.

Wanted, outdoor Assistant,
thoroughly reliable, competent, and
experienced. Married man preferred. Salary
£200 to commence, with half-yearly increments.
Very good suitably furnished free house and extras.
Prospects exceptionally good to a suitable man.—
Address, No. 4919, B.M.J. Office, 429, Strand, W.C. 2.

Wanted for client, Medical
MAN for Hospital Appointment, Federated
Malay States. £500 per annum, rising, free home,
passage, &c.—Full particulars apply, SUMMERHAYS,
Solicitors, 19, Eastcheap, London, E.C. 3.

X-Ray Assistant, qualified in
Radiograph, Massage, and all modern electrical
treatments, desires post, either Hospital or private.
Experienced, highest testimonials.—Address, No.
4903, BRITISH MEDICAL JOURNAL Office, 429,
Strand, W.C. 2.

Senior A.M.O., University
Graduate, with large experience also in
private Practice, desires similar Asylum Appoint-
ment, with married quarters or to live out.—
Address, No. 4920, BRITISH MEDICAL JOURNAL Office,
429, Strand, W.C. 2.

Medical Man required whole
time or mornings in Thames Valley.
Partnership eventually if desired.—Address, No.
5012, BRITISH MEDICAL JOURNAL Office, 429,
Strand, W.C. 2.

Prison Commission.—
Required, two lady DOCTORS for whole
time duties in prisons in and near London. Know-
ledge of modern methods of treating venereal
disease essential. Salary 7 guineas per week.—
Apply, THE SECRETARY, Prison Commission, Home
Office, S.W. 1.

Lady Dispenser wanted for
3 or 4 hours every afternoon (not Sundays).
Must reside locally.—Apply, WATTS, 99, Behndont
Road, Ilford.

Lady Dispenser and Book-
KEEPER (Hall Certificate) seeks POST with
Doctor or Institution. Excellent testimonials.—
Address, No. 5001, BRITISH MEDICAL JOURNAL Office,
429, Strand, W.C. 2.

Lady Dispenser requires a
post within fifty miles of London. Would
take Locum in London. Passed "Hall Examination."
—Address M. D. W., "Treco," Loughton,
Essex.

Qualified woman Dispenser.
Experienced. Bookkeeper, care of instru-
ments, &c. Free January 2nd, 1919.—Address, No.
5013, BRITISH MEDICAL JOURNAL Office, 429,
Strand, W.C. 2.

Experienced Chauffeuse
desires position with London doctor. Has
had town and country experience. Able to do
running repairs. Good educational qualifications.
—Address, No. 5014, BRITISH MEDICAL JOURNAL
Office, 429, Strand, W.C. 2.

Ship's Surgeon (ineligible for
Military Service.—Messrs. ELDER, DEMPSTER
AND CO., Limited, have a few vacancies for Surgeons
in their West African Service. Pay £20 per month.
Fees allowed for attendance on passengers. Length
of voyage varies from six to ten weeks, according to
particular route.—Apply, Medical Superintendent,
Messrs. ELDER, DEMPSTER & Co., Limited, Colonial
House, Liverpool.

Locum Tenens wanted
immediately.—Mr. PERCIVAL TURNER, requires
reliable gentlemen for temporary and War engage-
ments, town and country.—Apply, personally if
possible, or by letter send full details and refer-
ences to 125, Strand, London, W.C. 2.

LOCUM TENENS PROVIDED.

at SHORT notice.—Apply to

ARNOLD & SONS,

(J. E. ARNOLD, E. R. ARNOLD.)

Surgical Instrument Manufacturers,

ESTD. 1819.

MEDICAL TRANSFER DEPARTMENT,

6, GILTSPUR STREET, LONDON, E.C. 1.

Telegrams: "Instruments, London." Telephone
5240 City. 3 Lines.

Wanted, Locum to take

charge of middle-class Practice in pleasant
Midland County Town. No night work.—Address,
stating essential particulars, No. 5069, BRITISH
MEDICAL JOURNAL Office, 429, Strand, W.C. 2.

Wanted immediately Welsh

speaking LOCUM to take charge of country
Practice and panel during illness. Car kept.
Reply stating qualifications, references, and other
essential particulars, to Messrs. E. R. DAVIES
& DAVIES, Solicitors, Pwllheli.

Wanted, Locum Tenens with

view to Partnership and Succession in
excellent Ophthalmic Practice outside England.
Preliminary Assistantship if desirable. Mild
climate.—Address, No. 5015, BRITISH MEDICAL
JOURNAL Office, 429, Strand, W.C. 2.

Locum Tenens wanted imme-

diately.—Messrs. ARNOLD & SONS require
reliable gentlemen for temporary and War engage-
ments.—Apply personally if possible or send full
particulars with references to ARNOLD & SONS,
Transfer Dept., 6, Giltspur Street, London, E.C. 1.
—(opposite St. Bartholomew's Hospital).

LOCUM TENENS PROVIDED.

APPLY TO

Mr. PERCIVAL TURNER

The Oldest and only Agent who for 40 years
—without Agency fee to Principals—
has supplied Practitioners with reliable
substitutes at short notice.

125, STRAND, LONDON, W.C. 2.

Telegrams—"Epsomian, London." Telephone—
"Epsomian, London." Gerrard 399.
After 5 p.m.—Telephone: Epsom 695.

Wanted Practises and Part-

nerships.—Messrs. ARNOLD & SONS,
Surgical Instrument Manufacturers (Establ. 1819)
are in urgent need of Practices and Partnerships for
several of their clients who are anxious to settle
down at once. Send full particulars in confidence,
ARNOLD & SONS, Transfer Dept., 6, Giltspur Street,
London, E.C. 1. (Opposite St. Bartholomew's
Hospital).

Wanted at once by M.B., now

free, a middle and working-class PRAC-
TICE of about £1,000, with panel, in London.—
Apply, BLUNDELL & IRIGBY, Walter House, 418-422,
Strand, London, W.C. 2.

Wanted sound Industrial

PRACTICE in or near large town. Books
must bear investigation, and reasons for disposal
must be given. No agents.—Address, No. 5002,
BRITISH MEDICAL JOURNAL Office, 429, Strand, W.C. 2.

Wanted about July by a

young, energetic and experienced M.B.C.S.,
L.R.C.P., a PRACTICE or PARTNERSHIP with
large panel, on or near coast—South or East pre-
ferred. Income not less than £1,000 per annum.
Cash available.—Address, No. 4810, BRITISH MEDICAL
JOURNAL Office, 429, Strand, W.C. 2.

For Disposal.—Unopposed

good-class country PRACTICE within 50 miles.
Old established, present income £700, before the
war over £1,200. Can be easily worked up. Very fine
house and grounds. Residential locality. All sport.
Good fees. Premium only £300.—Apply, No. 6388,
c/o Mr. PERCIVAL TURNER, 125, Strand, W.C. 2.

For sale, genuine Practice in

good-class town, with fine agricultural district.
Owner wishing to retire at once would make attrac-
tive terms with immediate purchaser. Good house,
fine position. Rent £80. Population 50,000. Good
fees; patients of all classes. Panel £130, easily
worked. Can be transferred immediately. Receipts
£800 per annum. May be had for £150 or near offer.
Address, No. 5005, B.M.J. Office, 219, Strand, W.C. 2.

For Sale, owing to ill-health,

a well-established general PRACTICE in grow-
ing district near a city, together with some valuable
appointments. Annual income £1,200 for the last
three years. Excellent modern house also to be
sold.—Address, No. 4815, BRITISH MEDICAL JOURNAL
Office, 429, Strand, W.C. 2.

For Disposal, Practices or

PARTNERSHIPS.—Messrs. ARNOLD & SONS,
Surgical Instrument Manufacturers (Establ. 1819),
have been instructed to privately dispose of a large
number of really good Practices and Partnerships.
Gentlemen are requested to state their requirements
and amount of capital available. No charge to pur-
chasers.—Address, ARNOLD & SONS, Transfer Dept.,
6, Giltspur Street, London, E.C. 1 (opposite St.
Barth's Hospital).

For sale, in February,

woman's small middle class PRACTICE in
large Northern town. Income about £270. Room
for expansion. House in good situation. Rent £30.
Small premium asked.—Address, No. 4892, BRITISH
MEDICAL JOURNAL Office, 429, Strand, W.C. 2.

For Sale, Half Share of

unopposed old-established country Practice,
producing over £3,000 p.a. Premium one and a half
year's purchase.—Address, No. 4907, BRITISH
MEDICAL JOURNAL Office, 429, Strand, W.C. 2.

For Disposal.—A good Prac-

TICE is not always to be had directly, but
Mr. PERCIVAL TURNER can generally offer applicants
something suitable. Nearly all the best Practices
are sold by him without being advertised.—Full
information free on application to 125, Strand, W.C. 2.

Partner required at once in a

single-handed Practice of about £3,000 per
annum. South Coast within two hours of town,
sound, superior medical and surgical Practice only,
with good fees. Incoming man should be young,
active, scientific, and well up in modern surgery
and medicine, and have ample capital. Half-share
offered with preliminary Assistantship. A know-
ledge of radiography, electro-therapeutics (ionic),
and blood work would be of assistance. An advan-
tageous opportunity has just occurred, and also
advertiser possesses the two best houses in the town.
—Address, No. 4417, BRITISH MEDICAL JOURNAL
Office, 429, Strand, W.C. 2.

Medical Practice.—East of

Scotland. Average cash receipts over £800
per annum. Excellent reasons for disposal. Efficient
personal introduction. No reasonable offer will be
refused.—ROBERT FLEMING, S.S.C., 21, Hill Street,
Edinburgh.

Medical Practice for sale in

a desirable district in the South of Scot-
land. Annual income £800. For further particulars
apply to C. WATSON & SON, Solicitors, Royal Bank
Buildings, Annan.

Urgent Sale.—Easily

worked unopposed country PRACTICE, small
radius, N. Midlands, capable of great increase owing
to war. Single man area, suit invalided or elderly
men. Night work practically nil. Appointments
and panel over £200. Total receipts £825. Premium
£450.—Address, No. 190, BRITISH MEDICAL JOURNAL
Office, 429, Strand, W.C. 2.

Good-class Practice or Part-

nership wanted in south-coast town or
watering-place by an M.D. of Edinburgh. Adver-
tiser has had many years' experience of Tropical
Medicine and of Ophthalmology.—Address No. 4830,
BRITISH MEDICAL JOURNAL Office, 429, Strand, W.C. 2.

Partner in good class and

shipping Practice. Non-dispensing. Average
earnings £2,500 yearly. Unlimited scope for good
and energetic man.—Address, No. 4804, BRITISH
MEDICAL JOURNAL Office, 429, Strand, W.C. 2.

Death Vacancy.—Norfolk.

Urgent Sale. Good increasing Country
PRACTICE, £1,000 to £1,200 a year, including from
£200 to £250 appointments, with excellent scope.
Good house, garden, and garage.—For particulars,
apply to Dr. OSBURN, Old Catton, Norwich.
Telephone 250 Norwich. Telegrams: "Relief Old Catton."

Medical Practice in Derby-

shire (near Glossop) for sale. Death Vacancy.
Old est. Practice with large panel. Moderate price.
Investigation invited. Very comfortable house (fur-
nished if desired), all modern conveniences, at ex-
ceptionally low rent.—Address M. C. W., c/o Messrs.
WOOLLEY, SOXS & Co., Victoria Bridge, Manchester.

Medical Practice in Channel

ISLANDS.—Will the firm who wrote about
above to a Doctor last summer and were promised
consideration about March, kindly write him again
now. Letter mislaid.

A Third Partner.—One-third

Share (producing £1,000) in unopposed Practice, town and country hospital. Easily worked. Little night work; pretty country. Good roads, small radius, main line 3 hours London. Dispenser and Book-keeper. No agents.—Address, No. 5006, BRITISH MEDICAL JOURNAL Office, 429, Strand, W.C.2.

Death Vacancy, Yorkshire,

£1,200-1,500 a year. Large town. Easily worked. Panel 1,000; good house. An immediate applicant can act as locum. Premium moderate.—Apply No. 6356, c/o Mr. PERCIVAL TURNER, 125, Strand, W.C.2. (Telephone: Gerrard 399).

Yorkshire.—Lady retiring

wishes to sell well-established general Medical PRACTICE in large town. No panel. £2,000-£2,500 a year, growing rapidly. Excellent opportunity to acquire first-class Practice on very reasonable terms. Good introduction.—Address, No. 5004, BRITISH MEDICAL JOURNAL Office, 429, Strand, W.C.2.

Seaside Resort.—£650 a year.

For sale, increasing easily worked PRACTICE in favourite resort in Northern County. Good house and garden. Rent £45. No conveyance needed. Premium only £500, part can remain.—Apply, No. 6382, c/o Mr. PERCIVAL TURNER, 125, Strand, London, W.C.2.

Required Panel and Cash

PRACTICE in London or Suburbs. Income not less than £1,000 per annum. Can negotiate at once. Send full details in confidence, to "A" c/o ARNOLD & SONS, Transfer Dept., 6, Giltspur Street, London, E.C.1. (Opposite St. Bartholomew's Hospital).

Seaside.—£4,000 a year.—

LOCUM, view to Partnership, wanted in good class Practice in seaside resort. N. of England. A good deal of surgery. One-fifth share for disposal. Apply, No. 6385, c/o Mr. PERCIVAL TURNER, 125, Strand, W.C.2.

Medical Practice for Sale.—

For Sale, extensive Medical Practice in North East of Scotland. Cash receipts over £1,000 per annum. Excellent modern house with garage attached. Satisfactory reasons for disposal. Introduction given.—For full particulars address No. 5011, BRITISH MEDICAL JOURNAL Office, 429, Strand, W.C.2.

Eastern County.—Unopposed

Country PRACTICE. Good-class residential and agricultural district. Receipts £1,200 per ann. Fees 2s. 6d. to 21s. Fine old-fashioned residence with modern improvements, good garden, orchard, paddock, stabling, &c. Or smaller house if desired. Boating, fishing, shooting. Vendor disabled in war.—Apply, PRACOCK & HADLEY, 19, Craven Street, Strand, W.C.2.

To Purchasers.—Do not buy

without a full investigation by an expert. Forty years experience has given Mr. PERCIVAL TURNER an unique ability to advise in all cases. Terms free on application to 125, Strand, W.C.2. Telephone: Gerrard 399. Telegrams: "Epsomian, London."

Private Asylum, vacancy for

PARTNER.—For particulars address No. 5010, BRITISH MEDICAL JOURNAL Office, 429, Strand, W.C.2.

Whole or Half-Share (with

Succession later) of good middle-class Practice in pleasant residential suburb of large Midland town. Receipts average £1,200 a year. Visiting fees 3s. 6d. to 7s. 6d. Good house on main road, £65 p.a. Scope for increase.—Apply, PRACOCK & HADLEY, 19, Craven Street, Strand, W.C.2.

Warwickshire.—A well-

equipped FREEHOLD NURSING HOME with over 400 bedrooms, for sale, as a going concern. Genuine reason for selling. Open to every reasonable investigation.—Sole Agents: FAYERMAN & CO., Leamington Spa.

In Shakespere's Country.—

Commodious RESIDENCE for Sale—a bargain. In charming old-world grounds of about six acres.—FAYERMAN & CO., Estate Agents, Leamington Spa.

Established 1860.

Messrs. BEDFORD & CO.

(C. E. BEDFORD.)

Surveyors, Auctioneers, and Estate Agents,
10, WIGMORE STREET,
CAVENDISH SQUARE, W.1.
SPECIALISTS IN PROFESSIONAL
HOUSES AND CONSULTING ROOMS
IN HARLEY STREET AND LEADING MEDICAL POSITIONS
Telephone: 2419 Paddington.

The Polytechnic,

309, Regent Street, W.1.

CHEMISTRY DEPARTMENT.

Head of Dept.: F. E. WESTON, B.Sc., F.I.C.
CONJOINT BOARD EXAMINATIONS.

Courses in CHEMISTRY and PHYSICS for Dental Students will commence on JANUARY 6TH, 1919. For further particulars apply to THE DIRECTOR OF EDUCATION.

Well known Private Hospital

on the South Coast FOR SALE. Built for Specialised work. Full particulars through lawyer.—Address No. 4599, BRITISH MEDICAL JOURNAL Office, 429, Strand, W.C.2.

R. A.M.C. and Naval Appointments.—Service

DRESS and COMPLETE EQUIPMENT can be supplied to medical men who have obtained Commissions in the R.A.M.C. and Navy in 24 hours by Messrs. HARRY HALL. Unequalled value, perfect fit, and accuracy in every detail is guaranteed. Innumerable unsolicited appreciations have been received from satisfied officers. Patterns, abridged Price List, and if desired a simple self measurement form, post free on application to Messrs. HARRY HALL, 207, Oxford St., W.1, or 149, Cheapside, E.C.2.

IMPORTANT.—Visitors to London can order and be fitted the same day.

'Phones: Museum 820 and City 2086. Telegrams: "Hallzone," London, and "Arriarle," London.

SCIENTIFIC PHOTOGRAPHY.

Prints, Enlargements and Lantern Slides carefully made from negatives. Best possible results obtained by highly qualified staff, confidential.

Photographic Department, CITY SALE AND EXCHANGE, 9, Westmoreland Buildings, Aldersgate Street, E.C.1.

Motor Wheels repaired,

rebuilt, or converted.
TYRES of all makes, pneumatic or solid.
MOTOR FITTINGS and ACCESSORIES of all kinds. Quick service guaranteed.—FREDK. GEO. PICKERING, 173-175, Pentonville Road, London, N.1. Tel. City 5159.

17 h.p. Dodge Car, 2-seater,

1915 model. Electric self-starter, dynamo-lighting, doors open either side, electric and mechanical horns, speedometer. 5 brand new Dunlop tyres fitted to new Dunlop rims (detachable), discs to wheels. Car is perfect from end to end, at a bargain price of £295. No offers.—Major NAIRN, R.A.F., Hurst Park.

Invalid Chair for Sale, Carter's

pneumatic tyres. New. Price £13, cost £20.—M., 261, Birchfield Road, Birmingham.

Doctors' A/c Forms printed

in best style—250, 10s.; 500, 15s.; 1,000, 25s. Letter heads, Post Card heads, Calling Cards, &c., at equally moderate rates.—R. ANDERSON & SON, Printers, 1, Hill Place, Edinburgh. Samples sent. DOCTOR'S TESTIMONIALS printed or typed for all posts, best work, quick dispatch. 30 yrs. speciality.

South Devon and East

CORNWALL HOSPITAL, Plymouth.
176 beds.

The Committee invite applications for the appointment of a qualified HOUSE SURGEON, male or female, no age limit, to commence duties on January 21st, 1919. Special consideration will be given to candidates who have held a similar appointment in a large hospital. Salary £250 with board, residence and washing. Candidates should send copies of not more than three testimonials to the undersigned.

P. J. LANGDON, Secretary.

Plymouth, 21st December, 1918.

Mansfield & District Hospital.

The Board of Management of the above Hospital (102 Beds) invite applications for the post of HOUSE SURGEON from ladies or gentlemen. Salary £300 per annum, with residence, board, and laundry.

Applications, accompanied by not more than three recent testimonials (copies) should be sent to the undersigned, at the Hospital, not later than Saturday, 11th January, 1919.

Dated this 21st day of December, 1918.

A. H. LIMB, Secretary.

Manchester and Salford Lock

HOSPITAL.

The Committee are desirous of appointing a WOMAN AS CLINICAL ASSISTANT. Applications from duly qualified medical practitioners accompanied by copies of testimonials should be sent to the Secretary, Mr. ARTHUR STONEX, 22, St. Mary's Gate, Manchester.

The appointment will be subject to the approval of the Manchester Corporation and the Local Government Board.

The Hospital for Sick

CHILDREN.

Great Ormond Street, London, W.C.1.

A HOUSE SURGEON is required on the 1st February, 1919.

Candidates, Male or Female, are invited to send in their applications, addressed to the Secretary, as soon as possible, with copies of not more than three testimonials given specially for the purpose, and also evidence of their having held a responsible hospital appointment.

The appointment is made for a minimum period of six months. Salary at the rate of £100 per annum, washing allowance £5 per annum, and board and residence in the Hospital.

Candidates must possess a legal qualification to practice.

Candidates may be required to attend before a meeting of the Joint Committees.

Forms of application can be obtained from the Secretary.

By order of the Committee of Management,
JAMES MCKAY, Acting Secretary.
December, 1918.

Devonshire Hospital,

Buxton, Derbyshire (316 beds).

ASSISTANT HOUSE SURGEON.

The Committee invite applications for this post. To commence duties about 1st January, 1919. Salary £120 per annum, with furnished apartments, board (excepting stimulants), and laundry.

Applications of Senior Students will be considered. Applications, with copies of three recent testimonials, endorsed "Assistant House Surgeon," to be sent in at once.

The Medical Staff consists of five Honorary Physicians, three Honorary Assistant Physicians, a Pathologist and Bacteriologist, and two Resident House Surgeons.

The Hospital contains a Pathological Laboratory and X-Ray Department.

By order, TOM. B. HARRISON,
General Superintendent and Secretary.
December 16th, 1918.

The National Hospital for

DISEASES OF THE HEART (Incorp.),
Westmoreland Street, W.1.

NON-RESIDENT MEDICAL OFFICER.

Applications are invited for the post of Non-Resident Medical Officer (male). The post is for a period of six months, but may be renewed for a further period of six months. Candidates must be duly registered Medical Practitioners; they are not required to call upon the Medical Staff, but are expected to attend a meeting of the Medical Committee.

Applications, stating age and accompanied by six copies of three recent testimonials, should be addressed to me at Westmoreland Street not later than 6th January next.

J. H. HARRISON, Chairman.

Glamorgan County Asylum,

Bridgend.

Wanted immediately, TEMPORARY ASSISTANT MEDICAL OFFICER. Must be ineligible for Military Service. Salary £8 6s. per week, with board, apartments, attendance and laundry. Applications, stating age, with full particulars and copies of testimonials, to be sent to the Medical Superintendent.

The Royal Sussex County

HOSPITAL, Brighton.

An ASSISTANT PATHOLOGIST to the Pathological, Bacteriological and Clinical Research Department of the above Institution is required. Salary £200 per annum, with an additional payment of £100 per annum in lieu of board, residence and laundry.

Applications, with copies of testimonials, to be sent to the undersigned at the Hospital immediately.

J. HAROLD PENFOLD, Acting Secretary.

Free Eye Hospital,

Southampton.

ASSISTANT OPHTHALMIC SURGEON required who has held an appointment for at least six months in some recognised Ophthalmic Hospital, or in the Ophthalmic Department of a general hospital. Honorarium, £100 per annum for the first three years, with permission to practise. Applications to be sent by Monday, 6th January, 1919, to E. T. KEMP, Secretary (pro. tem.).

Putney Hospital

(Chester Bequest), Lower Common,
Putney, S.W.15.

Wanted, a RESIDENT MEDICAL OFFICER. Salary £150 per annum, with rooms, board, and laundry. Ladies eligible.

Applications, stating age, with copies of testimonials, to the Hon. Secretary at the Hospital, from whom further information may be obtained.

APPOINTMENTS—Important Notice.

(a)—British Islands.

Medical Practitioners are requested not to apply for any appointment referred to in the following table without having first communicated with the Medical Secretary of the British Medical Association, 429, Strand, London, W.C. 2.

Town or District.	Town or District.	Town or District.
CONTRACT PRACTICE.	CONTRACT PRACTICE.	WALES (continued).
ENGLAND.	WALES (continued).	
NOTTINGHAMSHIRE. (All Colliery Appointments.)	BLAINA. (Blaina and District Medical Aid Association.)	LLWYNPIA, GLAMORGAN. (Colliery Appointments.)
WORCESTER. (Amalgamated Friendly Societies' Medical Association.)	EASTERN VALLEYS, MONMOUTHSHIRE. (Workmen's Medical Association.)	OAKDALE, MON. (Medical Officer for Model Village and Cottage Hospital.)
WALES.	GILFACH GOCH, GLAMORGAN. (Workmen's Medical Scheme.)	RISCA, YNYSDDU and CWMFELINFACH. (Colliery Appointments.)
ABERTILLERY. (Colliery Appointment.)		

(b)—Colonial.

Medical Practitioners are requested not to apply for any appointment referred to in the following table without having first communicated with the Honorary Secretary of the Division or Branch named in the second column, or with the Medical Secretary of the British Medical Association, 429, Strand, London, W.C. 2.

Town or District.	Hon. Sec. of Division or Branch.	Town or District.	Hon. Sec. of Division or Branch.	Town or District.	Hon. Sec. of Division or Branch.
NEW SOUTH WALES. (All Friendly Society Appointments.)	Dr. R. H. TODD Hon. Sec., New South Wales Branch, B.M.A. Building, 30-34, Elizabeth Street, Sydney, N.S.W.	QUEENSLAND. (Brisbane Associated Friendly Societies and Australian Natives Association.)	Dr. J. CAMERON HEMSLEY (Acting Hon. Sec., Queensland Branch), Whickham Terrace, Brisbane.	VICTORIA. (All Friendly Society Lodge Appointments.)	Dr. J. W. DUNBAR HOOPER (Hon. Asst. Sec., Victorian Branch), 2, Collins Street, Melbourne, Victoria.
		TASMANIA. (State-aided Hospitals.)	Dr. E. BRETTINGHAM MOORE (Hon. Sec. Tasmanian Branch), 149, Macquarie Street, Hobart.		

Address: 429, Strand, W.C. 2.
December 21st, 1918.

By order of the Council of the British Medical Association

ALFRED COX, Medical Secretary.

Lord Mayor Treloar Cripples' HOSPITAL, Alton, Hants.

(200 Beds for Acute, 50 for Chronic Cases.)
There will shortly be a vacancy for the post of ASSISTANT RESIDENT MEDICAL OFFICER. Salary as arranged, or at the rate of not less than £200 per annum, with board, lodging, and laundry. Applications, with copies of recent testimonials, to H. J. GAUVAIN, M.D., M.Ch., Medical Superintendent.

Whitehaven and West CUMBERLAND INFIRMARY.

RESIDENT HOUSE SURGEON required. Salary £150 to £180 a year, according to arrangements, with board, washing and attendance. Applications, with three recent testimonials, to be sent to the Secretary of the Infirmary, Whitehaven.

Royal Free Hospital, Gray's Inn Road, W.C. 1.

Applications are invited from duly qualified and registered Medical women for the post of ASSISTANT ANÆSTHETIST. Salary £50, with board, lodging, etc. Applications should be sent to the Secretary at once.

Aberystwyth Infirmary and CARDIGANSHIRE GENERAL HOSPITAL.

Wanted, a HOUSE SURGEON. Salary £200 per annum, with board, residence, and laundry. Applications, with testimonials, stating age, &c., to be sent to the undersigned, endorsed "House Surgeon," not later than January 10th.
MYFANNY JONES, Secretary.

Montgomeryshire Education COMMITTEE.

APPOINTMENT OF SCHOOL DENTIST.

A School Dentist is required (nearly preferred). Salary £200 per annum, with travelling expenses according to scale. Applications must be received not later than 11th January, 1919. Terms of appointment and application form may be obtained from Llewellyn Phillips, Education Clerk, County Offices, Newtown.

Salisbury General Infirmary (200 beds).

Wanted, ASSISTANT HOUSE SURGEON (male or female). Salary £250 per annum, with apartments, board, lodging and washing. Candidates must be fully qualified and registered. All applications, with testimonials, to be sent to the undersigned, of whom the rules relative to the duties may be had on application.
The duties to commence from the date of the appointment.
S. B. SMITH, Secretary.
Dated 8th December, 1918.

GENERAL 5, MANDEVILLE PLACE, Manchester Square, W.1
Established 1862, at Henrietta Street, Covent Garden.
Thoroughly experienced Hospital-trained NURSES supplied at a moment's notice being Residents in the Home.
Also Specially trained NURSES for Mental Cases worked under the system of Co-operation. Apply to the SUPERINTENDENT.
Telephone: Mayfair 115.
Telegraphic Address: "Nutrix Wesdo, London."

Royal Hampshire County HOSPITAL, Winchester.

JUNIOR RESIDENT MEDICAL OFFICER wanted. Fully qualified. 350 beds, 213 Military. Salary £250 per annum, with board and lodging. Three recent testimonials.—Apply, SECRETARY.

London Hospital Private NURSING STAFF.—TRAINED NURSES for Adults and Children for Medical, Surgical, Maternity, or Massage Cases can be had immediately. Apply Matron, London Hospital, Whitechapel. Telephone: No. 5020 Avenue.
The nurses on the private staff return to the wards between their cases after sufficient rest, so that their work and knowledge are kept thoroughly up to date.

ST. LUKE'S HOSPITAL.

ESTABLISHED 1751.

PRIVATE NURSING STAFF DEPARTMENT.

TRAINED NURSES for MENTAL and NERVOUS CASES can be had immediately. Apply to LADY SUPERINTENDENT, 19, Nottingham Place, London, W.1. Telephone: Mayfair 5120.

NORTHERN BRANCH.—Apply, LADY SUPERINTENDENT, 57, Clarendon Rd., Leeds. Phone: Leeds 1963

ST. JOHN'S HOUSE,

Trained and experienced Medical, Surgical, Maternity, NURSES and MASSEUSES can be obtained by application, personally or by letter, to the Sister Superior, 12, Queen Square, Bloomsbury. Telephone No. 5939 Central (P.O.).
Telegraphic Address: Private Nurses, London.

TEMPERANCE ASSOCIATION OF MALE NURSES LTD.

FEMALE NURSES ASSOCIATION.

24, NOTTINGHAM STREET, Nottingham Place, LONDON, W.

Telegrams: "GENTLEST, LONDON."

[All Nurses Insured against Accidents.]

Telephone: 5969 MAYFAIR.

Superior Trained Nurses (Male and Female) for Medical, Surgical, Mental, Travelling, and all Cases. Nurses reside on the premises, and are always ready for urgent calls, day or night.

TERMS £2 2/- to £3 3/-

M. J. QUINLAN, Secretary.

MENTAL NURSES ASSOCIATION, Ltd.
 54, George Street,
 Manchester Sq., W.1.
 (MALE and FEMALE)
 Telephone: MAYFAIR 2287.
 Telegrams: "ISOLATION, LONDON"
 NURSES FULLY INSURED AGAINST ACCIDENT.
 Superior Mental Nurses (Male and Female)
 supplied at a moment's notice Day or Night
 for Nerve and Mental Cases.
 Apply SECRETARY.



THE NURSES' CO-OPERATION,
 22, Langham Street, Portland Place, W. 1.
 FOUNDED 1891. INCORPORATED 1894.

Established to secure to Nurses the full remuneration for their work and to supply

FULLY-TRAINED HOSPITAL

MEDICAL
 SURGICAL
 MENTAL
 MATERNITY
 FEVER
 CHILDREN'S
 MASSAGE

NURSES

To work under medical supervision

The Nurses are fully insured by the Co-operation against the Employers Liability under the Workmen's Compensation Act, 1906.—Miss HOADLEY, Lady Superintendent

Telegraphic Address: "Aprons, London."

Telephone: Mayfair 6742 and 6743.

THE LONDON TEMPERANCE NURSES CO-OPERATION 18, ADAM STREET, PORTMAN SQUARE, LONDON, W. 1.
 Telephone: MAYFAIR 2302. Telegrams: "NURSLONTEM, 'PHONE, LONDON."
 Supplies Fully Trained Hospital Nurses, also MENTAL AND MALE NURSES.
 Nurses Insured against Accident. TERMS FROM £2 2s. to £3 3s. APPLY, SECRETARY.

MENTAL NURSES

Male or Female.
 Telephone: PADDINGTON 2437.
 Telegrams: "ASSISTIAMO, LONDON."

MEDICAL NURSES

Telephone: PADDINGTON 2437.
 Telegrams: "ASSISTIAMO, LONDON."

MALE NURSES

Telephone: PADDINGTON 2437.
 Telegrams: "ASSISTIAMO, LONDON."

THE NURSES' ASSOCIATION
 (In conjunction with the MALE NURSES' ASSOCIATION)

28, York Street, Baker Street, London, W. 1
 (Mrs.) MILLICENT HICKS, Superintendent
 W. J. HICKS, Secretary.

FOR MENTAL, NERVE, AND GENERAL NURSES.

THE MISSES STRONGWICK'S NURSING AGENCY
 55, Great Marlborough Street, Regent Street, London, W. 1.

The Agency for supplying Experienced Nurses for Mental, Nerve, Medical, and General Cases.
 Terms from 21/-.

We have now a specially efficient staff of Female Nurses, and we give the most careful consideration to suitability and knowledge when sending supplies.
 Selected highly recommended Homes for Mental Patients. Particulars on application.

Established over 15 years. Phone: Central 508.

TELEPHONE 7102 HAMPSTEAD.
TRAINED NURSES' CO-OPERATION,
 3, BROADHURST GARDENS, HAMPSTEAD, N.W. 6.

HOSPITAL-TRAINED NURSES' CO-OPERATION.
 Hospital-trained Nurses supplied at any hour.
 Daily Visits by arrangements.
 Operation Outfits, Water Beds, &c., on hire.

THE MANCHESTER CLERICAL MEDICAL AND SCHOLASTIC ASSOCIATION, Ltd.
 The oldest MEDICAL Agency in Manchester
 8, KING STREET.

Telegraphic Address: "STUDENT, MANCHESTER."
 TRANSFERS and PARTNERSHIPS arranged, and Investigations, Valuations, &c., undertaken.
 ASSISTANTS & LOCUM TENENS SUPPLIED.
 PRACTICES for sale. Particulars on application.

LEE & MARTIN, LTD.,
 THE BIRMINGHAM MEDICAL AGENCY,
 93, HALL ROAD, HANDSWORTH, BIRMINGHAM.

TELEGRAMS: "Locum, Birmingham." TELEPHONE: 191, Northern, B'ham.

Transfers of Practices and Partnerships arranged.
 Accounts Investigated & Income-tax Returns prepared.
 "LOCUMS" AND ASSISTANTS SUPPLIED.

[ESTABLISHED 1868].

PEACOCK & HADLEY,
 (Mr. A. HADLEY)
MEDICAL TRANSFER AGENCY,
 19, Craven Street, Strand, W.C. 2.

Telegrams: Herbaria, Westrand—London.
 Telephone: Central 1112.
 LOCUM TENENS and ASSISTANTS supplied.
 Particulars of Practices and Partnerships for Sale sent on application.

THE Medical Agency,
WATERGATE HOUSE,
 York Buildings, Adelphi, W.C. 2.

Managing Director: J. A. REASIDE.

Telegrams: "Tubercle, London."

Telephone: Gerrard 8954.

BLUNDELL & RIGBY,
 Walter House, 418-422, Strand, W.C.2.
 (Entrance Bedford Street.)
 Telephone: 7148 GERRARD.
 Cable Address: (via Eastern) "RECALLABLE, LONDON."
 LOCUMS SUPPLIED.

Norfolk.—Old-established unopposed PRACTICE in first-class district near a good town. Receipts £1,200, including panel £470. Good society. Station. Long intro. Good house and large garden. Rent £80.

Yorks.—Unopposed Practice in manufacturing village. Receipts £800. Panel and appointments £450. Great scope. Premium £450 on easy terms. Good house, rent £30.

Liverpool.—Middle-class PRACTICE of £1,100. Panel 1,300. Rent £36. Premium £1,000 or near offer. Great scope.

S.W. County.—Surgeon used to good society required as PARTNER in good-class Practice in country town. Share about £1,000 p.a.

South Africa.—Old-established PRACTICE in small town with excellent climate. Receipts £1,400. Premium £900, including furniture worth £800.

Bristol.—Old-established middle-class PRACTICE of £900, including £300 panel. Good house, rent £45.

Bucks.—Old-established PRACTICE in Country Town. Receipts £1,000. Panel and appointments £500. Good house; rent £45. Premium £1,000.

New Zealand.—Unopposed PRACTICE of £1,000. Premium £400. Venetian now in England.

Yorks.—Easily-worked unopposed colliery PRACTICE of about £2,000. Appointments £900. Panel £600. Low rent. Premium £1,500, part down.

Somerset.—Unopposed PRACTICE of about £700 in charming district near good town. Excellent house and garden, rent £35. Premium one year's purchase.

Surgeon required as Partner in old-established Practice in nice country town in Warwickshire. Population 10,000. Plenty of operating. Share guaranteed to produce £1,000.

Colonial Appointment. Salary £700.

West End Partnership.—Half-share of £1,800. Good-class Practice. Small panel. Visits 3s. 6d. to 1 guinea. Good house.

Lancs.—Partnership or ASSISTANT with view, in manufacturing town near Liverpool. Receipts over £1,800. Panel 2,200. Good chance for Surgeon. Large Hospital and nice country near.

Wilts.—Old-established PRACTICE in nice country town with Cottage Hospital. Receipts over £800, with great scope as vendor refuses a good deal of work. Panel £100. Good house and garden. Rent £35. Opposition slight. Premium one year's purchase.

Home County.—Good-class PRACTICE in small country town. Many operations done. Receipts £2,500.

North of England.—Practice in nice clean country town. Receipts £1,000. Panel 2,000. £300 for quick sale.

London, S.W.—Old-established non-panel PRACTICE in pleasant district. Receipts average £1,300. Not much midwifery. Good house, with large garden; rent £60. Premium £1,350.

Midlands.—Old-established PRACTICE in prosperous town. Receipts over £1,200. Panel and appointments £650. Many good patients; visits generally 5s. Good house in nice position; rent £70. Hospital and vendor on staff. Good chance for active man. Premium one year's purchase.

Australia.—Practice of £1,700 in growing seaside town. Splendid climate. Premium £1,000, part deferred.

Monmouthshire.—Unopposed PRACTICE of £1,150 average, with plenty of scope. Appointments and panel £500. Good society, fishing, golf, etc. Good house and garden. Premium £1,000.

Purchasers stating their requirements can have Particulars of other Practices not advertised.

THE SCHOLASTIC, CLERICAL AND MEDICAL ASSOCIATION, LIMITED

(Established in 1880 by Mr. G. B. Stocker.)

22, CRAVEN STREET, TRAFALGAR SQUARE, W.C. 2.

Telegraphic Address: "TRIFORM, WESTRAND, LONDON."

Telephone No. 1854 (Gerrard).

ASSISTANTS AND LOCUM TENENS SUPPLIED. RESIDENT PATIENTS INTRODUCED.

NO CHARGE TO PURCHASERS.

- (1) **S.W. COAST.**—PARTNERSHIP in an old-established non-dispensing Practice. Delightful seaside resort. Receipts nearly £3,000 p.a. Educational facilities. Applicant should have surgical experience. One-fourth share. Preliminary Assistantship entertained.
- (2) **N.W. COAST.**—Residential Seaside Resort.—PARTNERSHIP in high-class Practice. No Panel. Share £800 p.a. (easy terms of payment). Preference to good anesthetist. Preliminary Assistantship.
- (3) **LONDON, S.E.**—Middle and working-class PRACTICE. Receipts 1918, £1,200. Panel 1,660. Rent £75. Premium £1,000.
- (4) **NORTH WALES.**—PRACTICE of about £750 p.a. in one of the most charming districts. No dispensing. Midwifery not encouraged. Excellent house and garden. Rent £45. Premium £600.
- (5) **DEATH VACANCY.—NORFOLK** (near Norwich). Country Practice, £1,150 p.a. (Appointments £300). Small Panel. Fine house and garden. Rent £65.
- (6) **DEATH VACANCY.—YORKS** (near Sheffield).—Town PRACTICE. £1,200 p.a. (Panel £370). Excellent corner house. Rent £85.
- (7) **LONDON** (outlying Residential Suburb).—Good-class PRACTICE. £1,300 p.a. No panel or midwifery. Attractive detached house. Large garden. Rent £90. Premium one year's purchase.
- (8) **SOMERSET.**—Unopposed PRACTICE, £700 p.a. Panel 400. Rent £32. Premium one year's purchase.
- (9) **NOTTING HILL, W.**—PARTNERSHIP in Practice. £2,000 p.a. Fees 5s. 7s. 6d. No appointment or midwifery. No conveyance. Rent £105. Premium, half-share, £1,200.
- (10) **SHROPSHIRE.**—PRACTICE about £800 p.a. Attractive country district. Visits 3s. 6d. to 21s. Large house with lovely views. Acre of garden. Rent £50 (or freehold £350). Premium one year's purchase.
- (11) **CAMBRIDGESHIRE.**—Unopposed PRACTICE. Receipts 1918, £2,700 (average 3 years, £2,306 p.a.) Panel 1,578. Appointments £300. Rent £60. Premium one year's purchase, part by instalments.
- (12) **BERKS.**—Country Town PRACTICE about £700 per annum (Appointments £125, Panel 600). Convenient corner house, with garage and garden. Rent £40. Premium one year's purchase.
- (13) **LONDON, N.W.**—PRACTICE over £1,300. Visits 3s. 6d., 5s. Midwifery 2½ and 3 guineas. Good house. Rent £75. Premium 1 year's purchase.
- (14) **SOUTH MIDLANDS.**—Unopposed country PRACTICE in pleasant district near county town. Receipts £770 p.a. Panel 666. Appointments £100. Nice detached house. Rent £60. No night work. Premium £600.
- (15) **CASH AND PANEL PRACTICE in N.E. LONDON.**—Receipts about £1,100. Panel over 2,400. Working expenses light.
- (16) **LONDON (N.W.).**—Good mid. and working-class PRACTICE. Receipts 1918, nearly £1,000. Convenient house. Rent £40. Good scope. Prem. £500.

NUMEROUS OTHER PRACTICES AND PARTNERSHIPS NOT ADVERTISED.

FULL DETAILS ON APPLICATION.

Medical Partnerships, Transfers and Assistantships (BARNARD & STOCKER). New Edition. Published by the Association. (11s.)

MR. A. V. STOREY, General Manager.

ESTABLISHED 1875. (Removed from 4, Adam Street.)

Mr. PERCIVAL TURNER, 125, Strand, London, W.C. 2. (Entrance in Savoy Street)

Telegrams: "EPSOMIAN, LONDON."

Telephone: GERRARD 399.

After Office Hours—EPSOM 695.

LOCUM TENENS provided—no charge to Principals. Every description of AGENCY and ACCOUNTANCY work undertaken.

SPECIAL NOTICE.—Owing to Paper Shortage Advertisements have to be curtailed. All particulars of following and others to be had free on application.—

- | | |
|--|---|
| <p>No. 6351. WILTSHIRE.—£1,200. Small town. Good house and garden.</p> <p>„ 6336. WORCESTERSHIRE.—£700. Unopposed. Good house and garden.</p> <p>„ 6335. HOMER COUNTY.—£3,000. Good class residential district.</p> <p>„ 6307. YORKSHIRE.—£250. Small town. Good house & garden. Pan. 1,350.</p> <p>„ 6301. LANCASHIRE.—£1,000. Unopposed. Retiring. Panel 700.</p> <p>„ 6295. SCOTLAND.—£900. Panel £800. Small town. Sport, &c.</p> <p>„ 6294. MIDLANDS.—£1,000. Unopposed. Bracing locality.</p> | <p>No. 6293. ON THAMES.—£900. Favourite resort. Panel 1,200.</p> <p>„ 6277. W. COUNTY.—Nearly £4,000. Partnership. Good class. Surgery, &c.</p> <p>„ 6274. LONDON SUBURB, N.—£900 a year. Panel 900.</p> <p>„ 6260. EAST COUNTY.—£3,000. Country town. ½ Share.</p> <p>„ 6259. LONDON, N.W.—£1,000. Good suburb.</p> <p>„ 6249. LONDON W. SUBURB.—£1,200 a year.</p> <p>„ 6239. GLOUCESTERSHIRE.—£1,400 a year. ½ Share.</p> |
|--|---|

And many others in all parts.

MR. J. C. NEEDES,

(P. W. Neeedes. F. B. Neeedes).

Medical Partnership and Conveyancing Agency.

8, DUKE STREET, ADELPHI, W.C. 2.

(Late 1, ADAM STREET, ADELPHI.)

Telegrams: "Acquirement, Westrand, London."

Telephone: Gerrard 3543.

This Agency (which has been established since 1875) undertakes the Sale of Practices, the Introduction of Partners, Valuations, Investigations on behalf of Purchasers, the supply of trustworthy Locum Tenens and Assistants, and every other description of Medical Agency business.

N.B.—No charges made to purchasers.

1. **TEN MILES FROM LONDON** in pleasant and increasing district, easily worked PRACTICE, held 18 years by vendor. Cash receipts for 1918 (to end of Nov.) £748, including panel of 800. Small radius, worked without a conveyance, very little night work. One opponent. Good modern detached residence, with large garden, garage, &c. Premium £720.
2. **KENT.**—Unopposed Country PRACTICE doing well over £1,200 per annum, including Union appointment and 800 to 900 panel patients. Very little midwifery and practically no night work. Nearest opposition 3½ miles. Commodious house (with gas and Company's water), large well-stocked garden (producing all requisite fruit and vegetables), garage, &c. Rent £52.
3. **INDIA.**—Premium half receipts for next two years (£100 down). SEASON PRACTICE (April to October) amongst Europeans and English-speaking natives of good position in an Indian Hill Station and Health Resort 7,000 feet above sea level, and possessing a perfect climate. Income about £1,400 a year. Every social advantage; unique opportunities for sport. Vendor can be interviewed in England.
4. **UNOPPOSED PRACTICE** (of 100 years' standing) in a very desirable district in the Midlands. Receipts average £1,000 a year, including Panel (about £250) and Union £55. Railway station. Beautifully situated house (3 reception, 6 bed, bathroom, &c.) tennis lawn, large flower & kitchen garden, garage, stabling, chauffeur's cottage. Rent of whole, £60 p.a. Mod. prem, part out of receipts. Excellent social advantages in district.
5. **IMMEDIATE SALE** through serious illness.—Unopposed, easily worked PRACTICE of £850 a year, 70 miles from London. Union appointment and 850 panel patients at 9s. per head. Visits 2s. 6d. to £1 1s; 40 midwifery cases. Detached house in its own grounds. Rent £16. Premium £300 to immediate buyer.

DR. J. FIELD HALL,

(FIELDHALL LIMITED)

MEDICAL TRANSFER AGENT,

12, Craven Street, Strand, W.C. 2.

Telephone: 4667 GERRARD.

Telegrams: "FIELDHALL, WESTRAND-LONDON."

1. **Near HARLEY STREET.—DEATH VACANCY.**—General and Consulting Practice. Estimated income £1,500, but probably considerably more. Good fees. Small house with beneficial lease. Rent £140. Premium for goodwill and lease £1,000.
2. **HOMER COUNTY.**—Exceptionally sound general PRACTICE. Income estimated to be well over £2,000, including good appts. Also appt. on Surgical Staff of County Hospital. Very excellent opening for a man keen on Surgery. Nice house, with all modern conveniences. Premium £3,000, part by arrangement.
3. **YORKSHIRE.—JUNIOR PARTNER** required. Rapidly developing non-panel PRACTICE in large town. Cash receipts for this year to end of November over £4,000. Bookings additional. A two-fifths Share will be sold for £1,600, payable part by instalments. Splendid opening for man accustomed to hard work in the North.
4. **SURREY.**—Residential town. Small, very genuine PRACTICE producing about £500 a year. Can be much increased. Convenient freehold house. Prem. for house and practice £2,000.
5. **DEVON.**—Charming rural district. Small PRACTICE, producing about £350. Can be readily increased to £600 or thereabouts. Fees 2s. 6d. to 10s. 6d. Suitable house, rent £40. Good society and sport. Premium £350.
6. **CUMBERLAND.**—PRACTICE must be sold at once. Income at least £1,000. Panel of 2,000. Compact house. Rent £38. Any offer accepted.
7. **CHESHIRE.—DEATH VACANCY.**—Small PRACTICE of about £400, with good scope. Very good house. Offers invited.
8. **DEATH VACANCY.—LONDON, N.W.**—Non-panel PRACTICE in good Suburb. Income last year, £1,300. Commodious house. Offers invited.
9. **SOUTH-WEST OF ENGLAND.**—Better class PRACTICE, offering good Surgical prospects, in desirable country town. Income, immediate past 12 months, £1,370. No panel. Large house, with good garden. Premium 1 year's purchase.
10. **NORTH DEVON.**—Country PRACTICE in delightful district. Income about £500. Fees 3s. 6d. to 21s. Scope for minor surgery. Rent of house £30. Premium £525.

Established 1860.

MR. HERBERT NEEDES,

Mayfair, 2299, 199, PICCADILLY, W. 1.

Mr. NEEDES has had 35 years' experience in the SALES of PRACTICES and PARTNERSHIPS.

VALUATIONS and AUDITS on behalf of PURCHASERS.

Reliable LOCUMS provided.

LUCRATIVE INVESTMENT.—£1,400 a year. Situate in prosperous town within easy run of Birmingham, and held by Vendor 25 years. No midwifery, or night work. Ample scope. Patients middle and industrial class. Six months introd. Price, £600 down, and £1,200 spread over 3 years. Panel value £300.

URGENT.—£400 accepted for a country PRACTICE within 100 miles, and situate in a wealthy agricultural district. Present returns nearly £750 and can easily be made £900, vendor being in delicate health. Appts. and panel £400. Good house in 2 acres ground at £45.

PARTNERSHIP with view to succession as may be arranged in a sound leading Practice in a country town within 30 miles of London. Income about £2,000 a year, including appointments. Income must be an active man of experience, and accustomed to good work. The HALF-SHARE for sale at moderate premium.

UNOPPOSED PRACTICE within 90 miles of London, in favourite Midland County, and returning £900 a year, including panel and appointments of over £350. Good class society and sport. Excellent modern residence in 2 acres of grounds, rent £65. Efficient introduction. Price £900. Personally known.

VERY OLD EST. PRACTICE in a favourite Cathedral city within 120 miles. Average income over £800 a year, not including al. appts. of nearly £300. Little midwifery, or night work. Good scope for active man. Excellent residence with garden, &c. Efficient introduction.

CORNWALL.—Unop. PRACTICE of £1,300, including £550 from panel and appts. County families on books. Fees good. House rent low. Price £950. REQUIRED unopposed PRACTICE of £700-800 a year in Sussex or S.W. Counties, and near the Coast preferred. Good garden essential.

REQUIRED a PRACTICE of £800 or £900 a year preferably in or near a good-sized town, with good panel attached.

R Syrupus Hypophosphitum Comp. FELLOWS

It is not unusual to meet the claim that other preparations are "just as good" as FELLOWS, but no one has met the preparation which rightly claimed to be better than FELLOWS. For over fifty years FELLOWS' SYRUP has maintained its supremacy as the standard preparation of the *Compound Hypophosphites*.

Reject < Cheap and Inefficient Substitutes
Preparations "Just as Good"

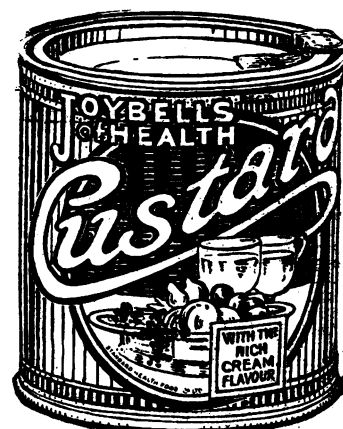
Matrons and Nurses should know that the JOYBELLS Specialities are sold under Warranty of the Institute of Hygiene given on account of their surpassing purity.

"JOYBELLS" CREAMY CUSTARD

JOYBELLS CREAMY CUSTARD.—The best of all Custard Powders.

Composed of the choicest ingredients, irrespective of cost of material or labour in production. It is far and away the best Custard Powder on the market. Richer, Nicer, more Nourishing and Luscious than any other.

Manufactured and Guaranteed by THE STANDARD HEALTH FOOD CO., Ltd., Reading.



GOLD MEDAL International Congress of Medicine, London, 1913.

"LIQ. SANTAL FLAV. c. BUCHU ET CUBEBA" (HEWLETT'S).

THE ORIGINAL PREPARATION.

REPORT OF "THE PRACTITIONER."

"Experience has shown this preparation to possess the same efficacy as Santal Oil itself. It mixes perfectly with water, and has a taste by no means disagreeable, in which particular it contrasts very favourably with the ordinary mixture it is intended to replace."

To ensure obtaining this preparation, please write: "Liq. Santal Flav. c. Buchu et Cubeba (Hewlett's)"

Packed, for dispensing only, in 10, 22, 40, and 90-oz. bottles.

INTRODUCED AND PREPARED ONLY BY

C. J. HEWLETT & SON, Ltd., Wholesale Druggists, 35 to 42, Charlotte Street, London, E.C.

