

# British Medical Journal.

DECEMBER 27TH, 1919.

## CONTENTS.

### ORIGINAL ARTICLES.

**An Address on Some War Diseases.**  
By Sir HENRY DAVY, K.B.E., C.B.,  
M.D., F.R.C.P. .... 837

**Observations on Mitral Stenosis in Soldiers.** By THOMAS F. COTTON,  
M.D. (With Diagrams) .... 840

**Apparent Spontaneous Rupture of a Normal Spleen.** By W. WOOD  
SHORTEN, F.R.C.S. Ed., Major  
R.A.F.M.S. .... 844

**The Relation of Pfeiffer's Bacillus to Influenza.** By STANLEY WYARD,  
M.D., M.R.C.P. .... 845

**Pregnancy Complicated by Volvulus of the Pelvic Colon.** By VICTOR  
BONNEY, M.S., M.D., B.Sc.Lond.,  
F.R.C.S., and E. CHITTENDEN  
BRIDGES, M.D. Durh. .... 846

### MEMORANDA.

**Death due to Swallowing a Dental Plate.** By VICTOR FELDMAN, M.R.C.S.  
(Illustrated) .... 846

### REPORTS OF SOCIETIES.

**MEDICAL SOCIETY OF LONDON:**  
Multiple Exostoses. .... 847

**MEDICO-PSYCHOLOGICAL ASSOCIATION OF GREAT BRITAIN AND IRELAND:**  
Schools for Psychiatry .... 848

**EDINBURGH OBSTETRICAL SOCIETY:**  
Occipito-posterior Cases. .... 849

**ROYAL ACADEMY OF MEDICINE IN IRELAND:**  
The Teaching of Pathology. .... 849

### REVIEWS.

**Mental Diseases.** .... 850  
**The Nervous Heart.** .... 850  
**Manchester Grammar School.** .... 851  
**Notes on Books** .... 851

### LEADING ARTICLES.

**LUNACY REFORM.** .... 853  
**DIAPHRAGMATIC HERNIA.** .... 854

### THE WEEK.

**The Battle of the Lodges in Victoria.** .... 854  
**The Needs of the Epsom Foundation.** .... 855  
**Standard Solutions for Estimating the Reaction of Culture Media.** .... 855  
**Death of an X-Ray Operator.** .... 855  
**Fee for Notification of Infectious Disease.** .... 855  
**Synthetic Drugs.** .... 856  
**The Iron Bacteria.** .... 856  
**The New R.A.M.C. Rates of Pay.** .... 856  
**The Secretary of the Oxford Press.** .... 856

### GENERAL ARTICLES AND NEWS.

**INFLUENZA IN THE BRITISH ARMY IN FRANCE.** .... 851  
**PREVENTIVE SELF-DISINFECTION AGAINST VENEREAL DISEASE.** .... 852  
**NOTIFICATION OF EPITHELIOMATOUS AND CHROME ULCERATION.** .... 852  
**BEIT FELLOWSHIPS.** .... 858  
**HONOURS.** .... 859  
**MEDICAL NOTES IN PARLIAMENT.** .... 857  
**MEDICAL NEWS.** .... 867

### LOCAL NEWS.

**ENGLAND AND WALES—**  
**King Edward's Hospital Fund for London.** .... 860  
**Liverpool Medical Institution.** .... 861  
**Scarlet Fever and Diphtheria.** .... 861  
**Infant Welfare in London.** .... 861  
**Organization of Health Services in London.** .... 861  
**Birmingham R.A.M.C. Dinner.** .... 862  
**Medical Reunion Dinner at Newcastle.** .... 862

**IRELAND—**  
**County Tyrone Medical Committee.** ... 862

### UNIVERSITIES AND COLLEGES.

**UNIVERSITY OF OXFORD.** .... 865  
**UNIVERSITY OF CAMBRIDGE.** .... 865  
**UNIVERSITY OF LONDON.** .... 866  
**UNIVERSITY OF LIVERPOOL.** .... 865  
**UNIVERSITY OF MANCHESTER.** .... 866  
**UNIVERSITY OF EDINBURGH.** .... 866  
**UNIVERSITY OF ST. ANDREWS.** .... 866  
**ROYAL COLLEGE OF SURGEONS OF EDINBURGH.** .... 866

### CORRESPONDENCE.

**Medicine and the People.** By W. A. Stokes, M.A., M.D. Cantab. .... 862

**Teaching of Obstetrics and Gynaecology.** By Herbert Williamson, M.B., F.R.C.P. .... 862

**Mode of Quinine Administration.** By Sir Ronald Ross, K.C.B., K.C.M.G., F.R.S. .... 863

**"New Lamps for Old" in Obstetrics.** By J. Thomson Shirlaw, M.D. Edin.; and F. C. Mears, M.B. .... 863

**Prevention of Venereal Disease.** By H. Wansey Bayly, M.C., M.R.C.S., A. C. Magian, M.D., and C. F. Marshall, M.D., F.R.C.S.; and by E. B. Turner, F.R.C.S., and Otto May, M.D. .... 863

**Epsom College.** By Sir Henry Morris, Bt., F.R.C.S. .... 864

**Durham University War Record.** By H. J. Theodosius, M.A. .... 864

**Home Ambulances.** By T. J. Jenkins, M.R.C.S., L.R.C.P. .... 865

**Pensions for Senior Medical Officers, R.N.** By Gerald Sichel, F.R.C.S., late Surgeon, R.N. .... 865

### THE SERVICES.

**Specialist Pay in the R.A.M.C.** .... 866

### OBITUARY.

**J. I. B. Berkart, M.D., M.R.C.P.** .... 867  
**Frederic Skaife, L.R.C.P., M.R.C.S.** .... 857  
**R. Francis Craggs, M.D.** .... 867

### LETTERS AND ANSWERS.

**Medical Fees.** .... 868  
**"Damaged Goods" on the Film.** .... 868  
**Severe Anaphylaxis: Recovery.** .... 868  
**An Imbecile's Memory.** .... 868

**VACANT APPOINTMENTS.** .... 868

### The SUPPLEMENT contains:—

**Friendly Societies and Medical Institutes in Victoria, Australia.** Letter from the Victorian Branch.

**Insurance Correspondence: The Conference with the Minister of Health.—The Minister's Arguments.—Insurance Remuneration.**

**AN EPITOME OF CURRENT MEDICAL LITERATURE** will be found in the centre of the JOURNAL, between pages 854 and 855.

With Income-tax at 6/- in the £ no Practitioner can afford to be without  
**THE SIMPLE MEDICAL YEAR-BOOK**  
OR  
**THE SIMPLE DENTAL YEAR-BOOK.**

Being Private Ledgers containing a Concise Abstract of Daily, Weekly, Quarterly, and Yearly Receipts and Expenses.

Price, 14s. 6d. net, post free.

"One can see at a glance the profit and expenditure of a practice, everything being arranged in such a simple way."—M.D. Lond.

**JOHN BALE, SONS & DANIELSSON, LTD.,**

83, 85, 87, 89, & 91, GREAT TITCHFIELD STREET, OXFORD STREET, LONDON, W. 1.

## INDEX TO ADVERTISEMENT PAGES.

Advertisements are classified so far as date of receipt and printing conditions make possible. Advertisements of the following classes will for the most part be found on the pages indicated:—

|  |  |   |   |
|--|--|---|---|
| <b>UNIVERSITY, HOSPITAL, Etc.</b><br><b>VACANCIES</b> —<br>Pp. 38, 37 and 39-41. | <b>BOOTMAKERS, Etc.</b><br>P. 2 and 28.  | <b>PENCILS, TYPEWRITERS, Etc.</b><br>P. 24.             | <b>INEBRIETY, Etc.</b><br>P. 31.  |
| <b>ASSISTANTS, PRACTICES, Etc.</b><br>Pp. 38 and 39.                             | <b>BRASS NAME PLATES</b> —<br>P. 24.   | <b>TAILORING AND UNDERWEAR</b><br>Pp. 2, 24, 25 and 28. | <b>MANATORIA</b> —<br>Pp. 33 and 34.                                    |
| <b>MEDICAL SCHOOLS, Etc.</b> —<br>Pp. 34-35.                                     | <b>CHEMISTS, Etc.</b><br>Pp. ii and iii of Cover, also pp. 2, 5-22, 23, 25 and 29.   | <b>TOBACCO AND CIGARETTES</b> —<br>P. 28.               | <b>SCHOOLS, Etc.</b> —<br>Pp. 34-35.                                    |
| <b>NURSING INSTITUTES</b> —<br>Pp. 41-43.  | <b>FOOD PREPARATIONS</b> —<br>Pp. iii and iv of Cover, also pp. 8-22, 23, 24 and 28. | <b>VACCINE LYMPH</b> —<br>P. 24.                        | <b>TUTORS AND LECTURERS</b> —<br>Pp. 34-35.                             |
| <b>PUBLISHERS</b> —<br>Pp. i and iv of Cover, also p. 2.                         | <b>MEDICAL AND SURGICAL APPLIANCES</b> —<br>Pp. 4 and 24-28.                         | <b>BATHS, SPAS, Etc.</b> —<br>P. 33.                    | <b>TRANSFER AGENTS</b> —<br>Pp. 42-44.                                  |
| <b>ANÆSTHETICS</b> —<br>Pp. 2 and 10.  | <b>MINERAL WATERS</b> —<br>P. 6.   | <b>HEALTH RESORTS</b> —<br>Pp. 20 and 33.               | <b>HOUSE AGENTS</b> —<br>P. 33.   |
| <b>ASSURANCE COMPANIES</b> —<br>Pp. 2, 3, 25, 23 and 23.                         | <b>MOTOR, TYRES, Etc.</b> —<br>Pp. 26, 27, 29 and 30.                                | <b>HOMES AND ASYLUMS</b> —<br>Pp. 30-33.                | <b>MISCELLANEOUS</b> —<br>Drs. A/c Forms—P. 39.<br>Miscellaneous—P. 39. |

## CARLYLE'S DUPLICATE PRESCRIPTION BOOKS

FOR MEDICAL MEN'S USE IN KEEPING COPIES OF THEIR PRESCRIPTIONS.

Made up in 20 Sizes and Thicknesses. Specially Printed Headings of Addresses.

Sample Book sent on receipt for inspection. Lost free, 1s. each.

G. & T. CARLYLE, Limited,  
116, Duke Street, LIVERPOOL.

## STAMMERING, CLEFT PALATE SPEECH, & LISPING.

By Mrs. BEHNKE,

Price 1s. 6d. net, postage 2d., of Miss BEHNKE, 39, Earl's Court Sq., S.W.5, who receives Stammerers for treatment, and Singers and Speakers for Voice Training. References to Medical Practitioners.

"The method is scientifically correct, and perfectly effective."—*Guy's Hospital Gazette*.

## SKIN DISEASES IN GENERAL PRACTICE.

By HALDIN DAVIS, M.B.Oxon., F.R.C.S., Dermatologist to the Royal Free Hospital.

Price 15/- net. Illustrated by 7 Coloured Plates and 62 Photos.

"... The notes on treatment are particularly good."—*British Medical Journal*.

"... can be confidently recommended to students and physicians."—*London Hospital Gazette*.

Published by

HENRY FROWDE & HODDER & STOUGHTON,  
17, Warwick Sq., Newgate Street, London, E.C. 4.

|                                      |     |
|--------------------------------------|-----|
| P                                    | A   |
| <b>A PEACE RISK.</b>                 |     |
| Who is carrying your death Risk?     |     |
| Is it your Family,                   |     |
| or a Life Assurance Office?          |     |
| WHY NOT LET THE PRUDENTIAL CARRY IT? |     |
| C                                    | LD. |

## W. EVANS & CO.,

287, REGENT ST.,

LONDON, W. 1.

ESTABLISHED 1886.

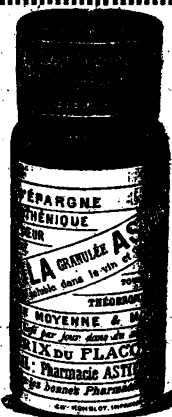
**WINTER OVERCOATS** from  
**5½ Guineas.**

**LOUNGE SUITS**, of Good Wearing  
Materials, from **7½ Guineas**,  
TO MEASURE.

**BEST VALUE IN THE WEST END.**

Gentlemen who have found it difficult to obtain a good fit are invited to call and give this old-established Firm a trial.

Customers unable to visit can rely on having a perfect fit guaranteed by sending an old suit as a guide for size.



## KOLA ASTIER

GRANULATED.

Anti-neurasthenic, regularises the cardiac rhythm, stimulates the nervous system.

**ASTIER LABORATORIES:**

45, Rue du Docteur Blanche, PARIS.

For Samples and Literature address:

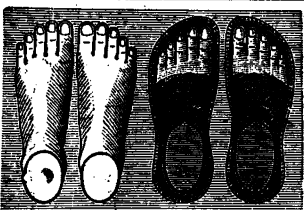
**WILCOX, JOZEAU & CO., 49, Haymarket, London, S.W.**

Australasia—Messrs. Joubert & Joubert, 552, Flinders St., Melbourne.

Canada—Messrs. Rougier Bros., 63, Notre-Dame St. East, Montreal.

India—Messrs. Eugène Meffre, P.O. Box 130, Bombay.

India—Messrs. Eugène Meffre, 11, Ezra Street, Calcutta.



## DOWIE & MARSHALL, LTD., BOOTMAKERS (EASY.)

455, WEST STRAND, CHARING CROSS, LONDON.

Registered at Stationer's Hall.]

(Established 1824.)

[G.P.O. Telephone No. 9015 Central.]

The instructions of the Profession intelligently carried out in the Departments for LADIES, GENTLEMEN, and CHILDREN, and especial attention is given to the Treatment of Weak Ankles and Flat Feet.

Illustrated Catalogue Gratis, in which is instruction for Self-measurement.

**DOWIE & MARSHALL, Ltd., 455, West Strand, Charing Cross, LONDON.**

## SALAMON'S ÆTHER AND CHLOROFORM

As exclusively used by the most eminent anaesthetists in the Kingdom. Anaesthetical and analytical reports on application to  
**SALAMON & CO., Ltd., Manufacturing Chemists, RAINHAM, ESSEX.** Est. 1879.

# INSURANCE.

Medical men will find it to their advantage to apply for special terms of insurance which the MEDICAL INSURANCE AGENCY has arranged with THE GUARDIAN ASSURANCE CO., Ltd.:—

1. **4% VICTORY BONDS PURCHASE SCHEME.**
2. **WHOLE LIFE and ENDOWMENT Policies.**
3. CHILDREN'S SAVINGS FUND and EDUCATIONAL Policies.
4. PARTNERSHIP LIFE Policies.
5. **MOTOR CARS** (Comprehensive Policies, specially designed for Doctors' requirements).
6. FIRE, BURGLARY, GLASS and FIDELITY Risks.
7. **PERSONAL ACCIDENTS** (with or without diseases).
8. **COMBINED "HOUSEHOLD" Policies** (cover risks arising from Fire, Burglary, and liability for Accidents to Servants, under one Policy and one payment).
9. WORKMEN'S COMPENSATION. (Accidents to Servants and other Employees).
10. CONSEQUENTIAL FIRE LOSS.
11. THIRD PARTY (Horse driving risks).

To The Agent and Secretary, Medical Insurance Agency, 429, Strand, London, W.C.

[Please send terms for Nos.

of above.]

Name \_\_\_\_\_

Address \_\_\_\_\_

**The GUARDIAN ASSURANCE COMPANY, Ltd.** (Estab. 1821.)

Subscribed Capital, £2,000,000. Paid up, £1,000,000. Total Assets, over £9,000,000. Income, over £2,000,000.

## Smoky Cities and the National Health



AT the Eighth Annual General Meeting and Conference of the British Commercial Gas Association (October, 1919) important pronouncements were made by eminent specialists on Health and Smoke Abatement with particular reference to modern housing, town planning and other current topics.

*Excerpts from the papers and speeches will be forwarded free and post free on receipt of a post card addressed to*

THE BRITISH COMMERCIAL GAS ASSOCIATION, 47 Victoria St, Westminster, S.W. 1.



# "NORVIC"

(REGD)

# CRÉPE

# BANDAGE

SUPERIOR ENGLISH MANUFACTURE. FAST WOVEN EDGES.

Extremely elastic, but contains no rubber.

Invaluable for binding. Displaces rubber and elastic web. More durable and one-third the cost. The Norwich Crepe Bandages, containing wool, will provide warmth, and do not absorb grease readily. Self-clinging and self-adjusting. Perfectly cleansed, sterilised, resiliency entirely restored by washing in hot soft water (with addition of a little soap). The edges will not fray out nor ravel. Made and supplied to the leading wholesale houses, neatly wrapped in labelled packages. Commended by the medical and nursing professions.

Send for prices and samples to the Sole Manufacturers:—

The Norwich Crepe Co. (1856) Ltd. (St. Augustine's Silk Mills), Norwich.

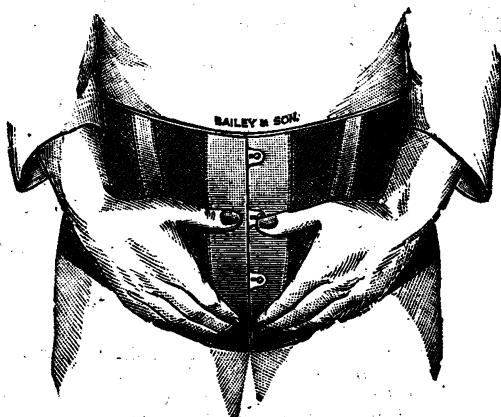
London Buyers can obtain Samples and Prices from Mr. T. EASTAWAY, 7, Wool Exchange, E.C. 2.  
Provisional Selling Agents: FRESE & MOON, LTD., 59, Bermondsey Street, London, S.E. 1.



"As fit as a fiddle."

# BAILEY'S BURLINGTON BELT

GIVES THE SUPPORT YOU WANT.



|                                    |      |        |         |     |     |      |
|------------------------------------|------|--------|---------|-----|-----|------|
| Hand Woven                         | Drab | Cotton | Elastic | ... | ... | 21/- |
| "                                  | "    | White  | "       | ... | ... | 25/- |
| "                                  | "    | "      | Silk    | ... | ... | 32/6 |
| (With Perineal Straps, 2/6 extra.) |      |        |         |     |     |      |

MANUFACTURERS OF ALL KINDS OF  
**TRUSSES, ABDOMINAL BELTS, Etc.**



PRIVATE FITTING ROOMS ON THE PREMISES.

Messrs. W. H. BAILEY & SON are prepared to send (immediately on receipt of letter or telegram) thoroughly Competent Assistants, Male and Female, to attend patients at their homes and to take Doctor's instructions. They personally superintend the making and fitting of the Appliance throughout, thus ensuring the best possible results

**W. H. BAILEY & SON, Ltd., 38, Oxford Street, W. 1.**  
Telegrams: "BAYLEAF, LONDON" Telephone: MUSKUM 1484.

## Eastman Dupli-Tized X-Ray Film

*One of the best known radiologists and radiographers writes:—*

"I am now using nothing else except the Film for stomach and intestine work, both in my private practice and at the Royal Infirmary, and the improvement in the results, photographically, is marked. The exposures are absurd—faster than we can measure—both with coil and Snook machine."

Signed ——— M.R.C.S., L.R.C.P.

*Eastman Dupli-Tized X-Ray Film  
is supplied in the following sizes:*

$6\frac{1}{2} \times 4\frac{1}{2}$ ,  $8 \times 5$ ,  $8\frac{1}{2} \times 6\frac{1}{2}$ ,  $10 \times 8$ ,  $12 \times 10$ ,  $14 \times 11$ .

Kodak, Ltd., Kingsway, London, W.C. 2.

# Sphagnol

## OINTMENT AND SOAPS

are manufactured from a distillate of peat and are now being regularly used in hospitals and prescribed by practitioners in the treatment of

**ECZEMA, PRURITUS, ACNE,  
PSORIASIS, HÆMORRHOIDS,  
IMPETIGO, SCABIES, SEPTIC  
WOUNDS** and other forms of **SKIN INFLAMMATION.**

Sufficient Sphagnol Soap and Ointment for a personal test sent free to Doctors on application.

**PEAT PRODUCTS (SPHAGNOL) Ltd.** 18 Queenhithe, **LONDON, E.C. 4**  
Upper Thames St.,

The following testimonials received from Medical Men prove the efficacy of SPHAGNOL in the treatment of

### PRURITUS.

*"I found Sphagnol Ointment act like a charm in a case of Pruritus, all the distressing symptoms disappearing on the first application."*

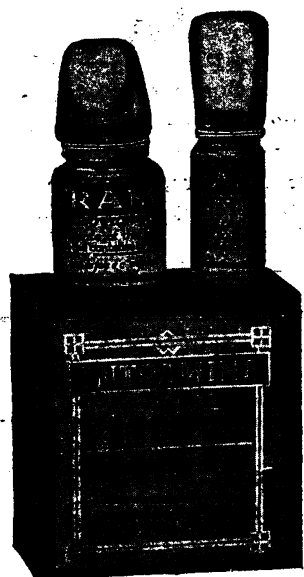
### PSORIASIS.

*"I used Sphagnol Ointment with great success in clearing up persistent Psoriasis which yielded to no other treatment. After the use of two tins of your Ointment the skin trouble had completely disappeared."*

### ECZEMA.

*"One case, a lady had had Chronic Eczema of the face 8 years. She was under treatment for 18 months at a Skin Hospital with no improvement. She was absolutely disfigured. I at once began using Sphagnol Ointment with the most happy results and she is now practically cured."*

## INTRAMINE



A non-toxic organic amino compound of sulphur which is injected in the form of a colloidal emulsion in the treatment of

**SYPHILIS, PROTOZOAL and CHRONIC BACTERIAL  
DISEASES and ACID INTOXICATIONS  
(Metallic Poisoning, etc.)**

In syphilis and protozoal diseases 'INTRAMINE' is used as an alternative to pave the way for the administration of the metallic drugs, and to prevent intoxication following their use.

Among chronic bacterial diseases, 'INTRAMINE' is most efficacious in gonorrhoeal rheumatism, urethritis, acne rosacea and seborrhoeic eczema.

In metallic poisoning, such as mercurial stomatitis, and arsenical dermatitis, 'INTRAMINE' is of great value, also in jaundice and albuminuria.

'INTRAMINE' for intramuscular injection is supplied in two solutions which must be mixed immediately before use.

'INTRAMINE' for intravenous injection is supplied ready for use in 50 c.c. AMPOULES.

'INTRAMINE' for internal administration is supplied in KERATINISED GELATINE CAPSULES.

Literature and all Particulars may be obtained from the Sole Manufacturers.  
**THE BRITISH DRUG HOUSES Ltd, 22/30, Graham St., City Road, London, N.1**

# NEW METHOD OF TREATMENT OF TUBERCULOSIS AND SYPHILIS BY "IONOID ARSENIC"

Colloidal arsenic prepared by an entirely new general method (E. FOUARD'S method)

Intra-muscular painless  
or intravenous injections

Sales, Samples and Literature  
on application to

Selling Agents

IONOÏDES, 13, rue Pavée, Paris

WILCOX, JOZEAU and Co  
49, Haymarket, London S. W.

DARRASSE Frères  
13, Rue Pavée, Paris (France)

**GOLD MEDAL** International Congress of Medicine, London, 1913

## "LIQ. SANTAL FLAV. c. BUCHU ET CUBEBA" (HEWLETT'S).

THE ORIGINAL PREPARATION.

### REPORT OF "THE PRACTITIONER."

"Experience has shown this preparation to possess the same efficacy as Santal Oil itself. It mixes perfectly with water, and has a taste by no means disagreeable, in which particular it contrasts very favourably with the ordinary mixture it is intended to replace."

To ensure obtaining this preparation, please write: "Liq. Santal Flav. c. Buchu et Cubeba (Hewlett's)"

Packed, for dispensing only, in 10, 22, 40, and 90-oz. bottles.

INTRODUCED AND PREPARED ONLY BY

C. J. HEWLETT & SON, Ltd., Wholesale Druggists, 35 to 42, Charlotte Street, London, E.C.



# Osmos

The Great British Aperient Water.

The osmotic properties of this Water have been found by Practitioners most useful in the treatment of **Habitual Constipation, Hepatic Conjestion and Billous Attacks, Obesity, Hæmorrhoids, Gouty Affections, Complications of Pregnancy,** and Diseases peculiar to Women, and Indiscretions of Diet.

Possibly you have not tested "Osmos." May we, therefore, have the pleasure of sending you a bottle, post free? We will gladly do so on receipt of your card.

Osmos, Crown Wharf, Hayes, Middlesex, England.

## INFLUENZA INFECTION.

# STOKES' Patent NASAL INHALER

MADE ENTIRELY OF LIGHT RUBBER.

Can be worn at all times, even during sleep.

Particulars on application.

**OPPENHEIMER, SON & CO., Limited,**

179, QUEEN VICTORIA STREET, LONDON, E.C. 4.

Entirely British House since Foundation in 1891.



## THE ORIGINAL COLLOIDAL PREPARATIONS FOR MEDICINAL USE

**Collosols** are pure and stable colloidal solutions, isotonic and isomorphic with the elements of the body.

**CROOKES'**

# COLLOSOLS

**Collosols** are tested by ultramicroscopic, bacteriological, and clinical experiment.

## COLLOSOL FERROMALT.

PURE MALT EXTRACT WITH COLLOIDAL IRON.  
FOR INTERNAL ADMINISTRATION.

**T**HE iron in this preparation is in an extremely fine state of subdivision, and is present to the extent of 0.1%. When administering iron it should be remembered that the total iron content of the normal body does not exceed 37 grains, and although organic compounds of iron have been recommended, the inorganic iron is held by many to be the most efficient in the only true test of the value of an iron preparation, *i.e.*, increase of hæmoglobin. Collosol Ferromalt should be taken after meals. Diffusion rapidly takes place over the whole of the stomach, and the known low chemical affinity of colloids prevents too rapid absorption of iron in individual positions. Collosol Ferromalt does not cause constipation or digestive troubles.

A MEDICAL MAN writes, December 2nd, 1919:—

"The first bottle has proved a great success. I have been using it in a case of anæmia following lactation and there is marked improvement even in a fortnight."

Literature, and Reports from

## THE CROOKES LABORATORIES,

22, CHENIES STREET, TOTTENHAM COURT ROAD, W.C. 1.

Telephone: MUSEUM 3663 & 3697.

## BRITISH COLLOIDS LIMITED.

CORYTONS

## A Great Advance in Soap Chemistry

As a result of sixteen years of strenuous work in chemical research and its practical application, "Sapon" Soap—a British Invention, developed with British Capital—has been perfected.

It is the greatest advance in the chemistry of Soap since that article was first manufactured. Ordinary Soap consists of Fat deglycerined and saponified with Caustic Soda.

### "SAPON" SOAP

is derived from Carbohydrates, which, when treated by the Company's patented process, yield Ammonia, Methylamine, and Trimethylamine. These Nitrogenous compounds are highly emulsifying agents, and do **NOT** combine with Lime or Magnesia Salts in water, as all fat-derived soaps do. Hence, no "scum" or insoluble lime soap is formed, even in the hardest water when "Sapon" is used.

A Harley Street Doctor writes:—

"I have found your 'Sapon' Soap most effective in clearing a muddy greasy skin. In one particular case in which I advised its use the result was very striking—a healthy pink complexion replacing a dull muddy one."

### Skin Diseases.

The Amines and Amido bodies in "Sapon" Soap are readily soluble in water. They are germicidal but non-injurious, owing to their colloid nature. Besides their efficiency as cleansers, they have a wonderfully sedative action. This action is intensified by the addition of 10% of saponified Birch Root Tar in

### "SAPON" RUSSIAN TAR SOAP.

A member of the Medical Profession writes:—

"I find your Russian Tar Soap gives wonderful results in irritable skin diseases, such as Scabies, Eczema, Pruritus, Insect Bites, Acne, etc."

A medical officer of a large Public Institution writes:—

"I find your Soap of the greatest use in keeping off fleas from my own body, which is a happy hunting field for their onslaughts."

The following is the best method of application: Moisten the Soap, rub it on the part affected and allow it to dry.

Free Samples will be sent to any member of the Medical Profession on receipt of a postcard to:—

**SAPON SOAPS, LIMITED, Sapon House, London Bridge, E.C. 4.**

**Armours' Organotherapeutic Series.**

# Pituitary Liquid "Armour"

(Liquor Hypophysis)

A carefully prepared sterile, isotonic solution containing the active principle of the posterior lobe of the pituitary body free from all chemical preservatives and undesirable organic extractives. It is physiologically standardized for hypodermic use.

The hypodermatic administration of Pituitary Liquid produces a distinct rise in blood pressure, a marked constriction of the uterus and a pronounced increase in intestinal peristalsis.

Pituitary Liquid "Armour" is recommended in cases of Uterine Atony and also as a valuable aid in controlling postpartum and other forms of hæmorrhage. It is successfully employed in cases of shock and other conditions of low blood pressure. Its peristaltic action is particularly useful following on abdominal operations.

**ARMOUR & COMPANY, LTD.,**

QUEEN'S HOUSE, KINGSWAY, LONDON, W.C. 2.

TELEPHONE: HOLBORN 5900.

*All medical men should have our pamphlet on the Pituitary. Write for a copy and sample stating whether for Obstetrical or Surgical use.*

We supply:—

$\frac{1}{2}$  c.c. Ampoules for  
Obstetrical Work.

1 c.c. Ampoules for  
Surgical Use.



By  
Appointment



To  
H.M. The King.

## NESTLÉ'S MILK

Experience proves that Nestlé's Milk is the best substitute for mother's milk when the latter is unobtainable or of unsatisfactory quality.

Nestlé's Milk has stood the test of half-a-century's use in all parts of the world, and in England alone hundreds of thousands of children have been successfully reared on it.

Although theoretically unsweetened milk is often considered preferable, the experience of mothers show that sweetened condensed milk gives best results—perhaps because it undergoes less change in the process of preservation, and therefore retains its vitamins unimpaired. (As makers both of sweetened and unsweetened milk, the proprietors of Nestlé's Milk have no inducement to recommend the former rather than the latter.)

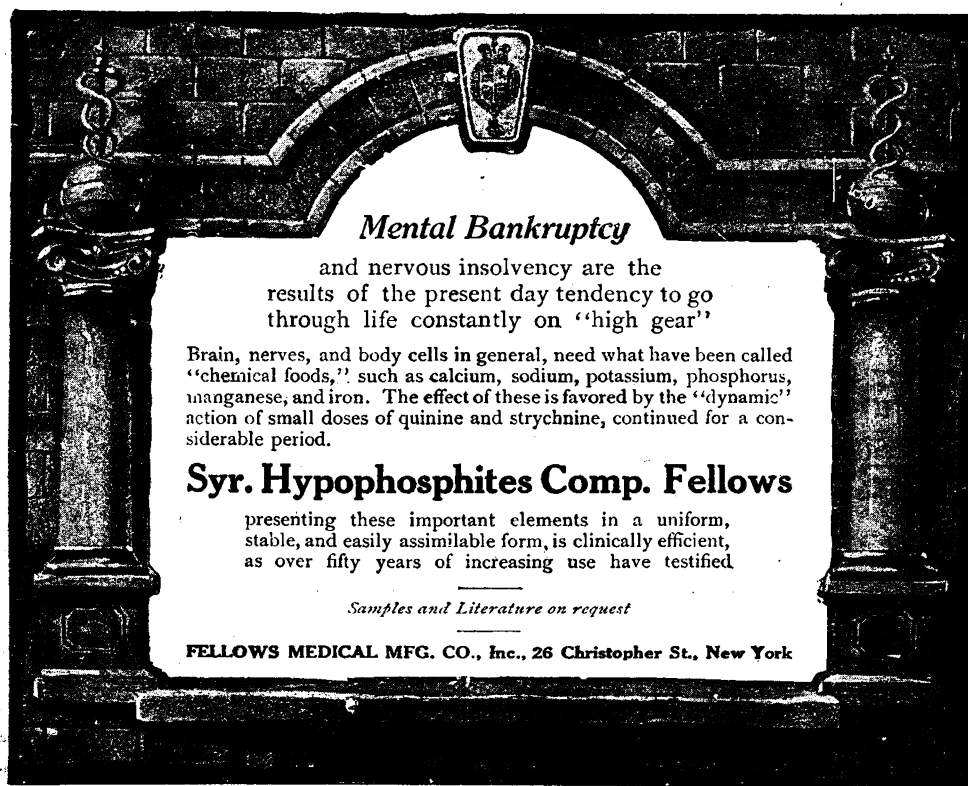
See

**NESTLÉ'S BABY BOOK, 1919.**

Post free on application to

**NESTLÉ'S, 6 & 8 EASTCHEAP, LONDON, E.C. 3.**





***Mental Bankruptcy***

and nervous insolvency are the results of the present day tendency to go through life constantly on "high gear"

Brain, nerves, and body cells in general, need what have been called "chemical foods," such as calcium, sodium, potassium, phosphorus, manganese, and iron. The effect of these is favored by the "dynamic" action of small doses of quinine and strychnine, continued for a considerable period.

**Syr. Hypophosphites Comp. Fellows**

presenting these important elements in a uniform, stable, and easily assimilable form, is clinically efficient, as over fifty years of increasing use have testified

*Samples and Literature on request*

**FELLOWS MEDICAL MFG. CO., Inc., 26 Christopher St., New York**

## SAVARESSE'S CAPSULES

afford the best means of administering Santal Oil for the treatment of Gonorrhœa, Urethritis, and other affections of the Genital Organs.

**Made with Membrane (not Gelatine) these Capsules pass through to the Intestines before bursting, and Gastric and other disturbances are thereby prevented.**

SAVARESSE'S SANTAL CAPSULES contain the finest Sandal Wood Oil, distilled in our Laboratories from selected Mysore Wood, bland, pure, and of high Santalol content. Each Capsule contains 10 drops.

*Manufactured by*

**EVANS SONS LESCHER & WEBB, Limited.**

**LIVERPOOL**

**NEW YORK**

**LONDON**

# Anæsthetics


Chloroform Pure = Duncan

Ether Pure = = Duncan

Ethyl Chloride = Duncan

Ethyl Bromide = Duncan

THE ABOVE ARE ABSOLUTELY  
PERFECT PRODUCTS FOR ANÆSTHESIA  
AND ARE MANUFACTURED BY  
**DUNCAN, FLOCKHART & CO.,**  
EDINBURGH & LONDON.

**GOLD**  **MEDAL**  
INTERNATIONAL CONGRESS OF MEDICINE  
LONDON 1913

THE NON-IRRITANT  
**LOCAL ANÆSTHETIC**  
**NOVOCAIN**

DOES NOT CONTAIN COCAINE.  
*The original preparations as supplied by us  
for the past 12 years.*

**THE SACCHARIN CORPORATION LTD.**  
Pharmaceutical Department.  
36, 37, QUEEN STREET, CHEAPSIDE, LONDON. E.C.4.

# NOVARSENOBILLON

**For intravenous or intramuscular injection in the treatment of**  
**Syphilis, Recurrent Fever**  
**and other spirochaetal infections.**

"Novarsenobillon in my hands has proved a safe and most efficient remedy against the protean ravages of the *Spirochæta pallida*."

Hunterian Lecture—"Diagnosis and Treatment of Syphilis of the Central Nervous System,"

*The Lancet*, Feb. 16th, 1918, pp. 243/50.

MANUFACTURED IN GREAT BRITAIN UNDER LICENSE & CONTROL OF THE BOARD OF TRADE

*Literature and all particulars may be obtained from*

**MAY & BAKER, LTD., Manufacturing Chemists**  
**BATTERSEA, LONDON, S.W. 11.**

## Faulty Protein Digestion and Imperfect Fat Digestion

are the most common errors of diet that produce the symptoms readily recognised as

### Constipation in Infants.

A thorough understanding of the undeniable usefulness of

# Mellin's Food

as a modifier of fresh cow's milk for the correction of these errors will save the medical practitioner much annoyance.

#### A well-known doctor writes:

"In the case of my own child, it was much troubled at an early age with constipation, but Mellin's Food was recommended by a medical friend whose own baby took it with excellent results. It proved to be just what was needed, and the child is now sturdy and vigorous." ——— L.R.C.P., L.M., M.R.C.S.

*Write to us for Sample and result of our observations.*

MELLIN'S FOOD, LTD., PECKHAM, LONDON, S.E. 15.

YOU CAN SAFELY RECOMMEND

**NEAVE'S MILK FOOD** (STARCHLESS),

For Babies from Birth.  
Instantly Prepared by  
adding Hot Water only.

DOCTOR —, B.A., M.B., B.Ch., B.A.O., M.D., etc. (Ireland) writes: "YOUR MILK FOOD HAS AGREED BETTER WITH OUR BABY THAN ANYTHING TRIED SINCE HIS BIRTH, and I am sorry I did not think of putting him on it from the beginning as he was kept back by incessant colic and want of proper rest as a result. My experience is that all Babies cannot be brought up on the same rigid principles, but I feel that your preparations should meet the wants of any if judiciously administered."

DOCTOR —, D.Sc.Ed., B.Sc., M.D., M.B., C.M., D.P.H. (Park Lane, London, W.), writes: "MY BABY GIRL IS THRIVING ADMIRABLY ON YOUR MILK FOOD. . . . The mother was unable to feed her and previously tried other Infants' Foods without success. I take every opportunity of recommending both your Milk Food and Cereal Food as the best scientific preparations where breast feeding is contra indicated."

In 2/6 Tins.

**Neave's Foods**

USED IN HUNDREDS OF HOSPITALS AND  
CHILD WELFARE CENTRES AND CRECHES.

"NEAVE'S" IS THE OLDEST OF ALL INFANTS' FOODS  
— IS WIDELY ENDORSED BY THE MEDICAL PROFESSION  
— AND HAS BEEN SOLD ALL OVER THE WORLD FOR  
NEARLY A CENTURY.

Gold Medals, London, 1900, 1906 and 1914;  
also Paris.

**NEAVE'S HEALTH DIET**  
(MILK AND CEREAL),

For Expectant and Nursing Mothers,  
Invalids and Dyspeptics.

Provides full and exact nourishment at the expense of small exertion on the part of the digestive organs. It is meeting with much success in cases of general debility and the various forms of dyspepsia.

A regular course of this Diet during the pre-natal period is found most helpful in enabling mothers to nurse their infants, whilst for Nursing Mothers its continued use ensures a free secretion and an improvement in the quality of the milk.

In 2/- and 6/- Tins.

Samples Post-free on receipt of Professional card.

JOSIAH R. NEAVE &amp; CO. (Dept. No. 5) Fordingbridge, Hants.

**NEAVE'S FOOD**  
(CEREAL),

Prepared with Milk & s  
directed forms a Com-  
plete Diet for Infants,  
Growing Children, In-  
valids, and the Aged.

The Chief Medical Officer of Health and Public Analyst for Dublin says: "This is an Excellent Food, admirably adapted to the wants of infants, and, being rich in phosphates and potash, is of the greatest utility in supplying the bone-forming and other indispensable elements of food. Although peculiarly adapted to the wants of the young, this Food may be used with advantage by persons of all ages."

DOCTOR —, L.R.C.P., L.R.C.S. Ed., L.F.P.S. Glas., &c. (Leeds) writes: "Your Neave's Food is suiting our youngster admirably, for which we are very thankful. . . . She was not doing well on cow's milk and water alone."

In 1/6 and 3/9 Tins;  
also 6d. Packets.

**Valentine's Meat-Juice**

In Debility, Nervous Exhaustion  
and Anaemia, where Digestion is  
Impaired and it is Essential to Con-  
serve the Weakened Vital Forces,  
Valentine's Meat-Juice demon-  
strates its Ease of Assimilation and  
Power to Restore and Strengthen.

Employed in many Hospitals and Sanitariums and recommended  
by many leading Physicians and Surgeons throughout the world.

Physicians are invited to send for Clinical Reports.

For sale by European and American Chemists and Druggists.

**VALENTINE'S MEAT-JUICE COMPANY,**

Richmond, Virginia, U. S. A.

B1



"The clinical evidence is increasingly convincing that this detoxication process will revolutionise the whole subject of vaccine treatment and preventive inoculation."—  
LANCET, March 8th, 1919.

# DETOXICATED VACCINES

(Prepared by GENATOSAN, Ltd.)

in the Prevention and Treatment of

## INFLUENZA

AND ALL BRONCHIAL AND NASAL CATARRHS.

Even those practitioners who have hitherto shunned vaccine treatment, or abandoned it after a few disappointing trials, will be interested in the results already obtained with detoxicated vaccines.

By this new method the toxins are removed from vaccines without affecting the antigens: hence quantities from ten to one hundred times larger than the usual dosage can safely be injected, with the result that much greater amounts of immunising anti-bodies are developed.

During the devastating influenza epidemics of 1918 about 150 persons were inoculated with a compound detoxicated vaccine in a dose of 1,500 millions followed by one of 3,000 millions. *No inconvenience was caused, beyond some local redness and tenderness, and no influenza or catarrhs occurred except one very mild case.* (See the *Lancet*, June 28th, 1919.)

In both the treatment and prevention of such affections it is important to "strike early and strike hard." Physicians, therefore, may confidently employ the above-mentioned large doses of Detoxicated Anti-Influenza Vaccine, consisting of a mixture of Pfeiffer's Bacillus, Hæmolytic Streptococci, Pneumococci, M. Catarrhalis, B. Friedlander, B. Septus and Bronchial Staphylococci.

Detoxicated Vaccines have also been administered, with remarkable success, in gonorrhœa, etc. Their trustworthiness is assured by the care, skill, and highly expert technique used in preparing them.

*Prices and Literature on application to*

## GENATOSAN, LTD.

(Manufacturers of Sanatogen, Formamint, Genasprin, etc.),

12, Chenies Street, London, W.C. 1.

(Chairman—THE VISCOUNTESS RHONDDA.)

# "FLAVINE"

---

## TREATMENT OF GONORRHOEA.

---

A great advance in the Treatment of Gonorrhœa.

—Dr. H. E. G. in *THE LANCET*, p. 741, May 3rd, 1919.

The Best Antiseptic (for Gonorrhœa) on the Market appears to be Flavine.—Dr. H. E. G. in *THE LANCET*, p. 741, May 3rd, 1919.

"ACRIFLAVINE . . . . has proved a distinct advance on any antiseptic previously used for the treatment of Gonorrhœa . . . . lavation with 1 in 4,000 acriflavine being the most satisfactory routine treatment for acute gonorrhœa at present available.

"There are no contra-indications to the use of acriflavine."

. . . . 196 cases of uncomplicated acute gonorrhœa treated by acriflavine lavation. These cases show an average of 19·8 days in hospital, the actual treatment being completed in 15·4 days, and the patients being retained for other 4·4 days for observation before being dismissed as cured."—*B.M.J.*, May, 1919, p. 571.

### PRICES :

|                            |       |               |       |               |       |
|----------------------------|-------|---------------|-------|---------------|-------|
| ACRIFLAVINE - 5-grm. bot., | 3/6   | 10-grm. bot., | 6/6   | 20-grm. bot., | 12/6  |
| PROFLAVINE - 5 "           | " 2/6 | 10 "          | " 4/6 | 20 "          | " 8/6 |

*Supplies are available for Post Prescription Service on application through any of the 555 Branches of BOOTS THE CHEMISTS,*

ACRIFLAVINE AND PROFLAVINE ARE MANUFACTURED BY

**BOOTS PURE DRUG CO. LIMITED,**  
 MANUFACTURING CHEMISTS & MAKERS OF FINE CHEMICALS,  
 THE LABORATORIES, ————— NOTTINGHAM.

SIR JESSE BOOT, MANAGING DIRECTOR.

*Sole Distributing Agents (for the Flavines) in U.S.A.:—*

**HYNSON, WESTCOTT & DUNNING, Pharmaceutical Chemists, Baltimore.**

# Glykeron and Glyco-Heroin

ARE SYNONYMOUS APPELLATIONS AND ARE NOW KNOWN AS SUCH TO ALL DISPENSING PHARMACISTS

THESE designations may now be used interchangeably by the physician when prescribing the preparation originally known only as Glyco-Heroin (Smith).

As a safeguard against having worthless imitations of the preparation dispensed, it is suggested that the physician use the name

## GLYKERON

which is non-descriptive and more distinctive, when prescribing GLYCO-HEROIN (SMITH) for Cough, Asthma, Phthisis, Pneumonia, Bronchitis, Laryngitis, Whooping-Cough and kindred affections of the respiratory system.

DOSE—The adult dose is one teaspoonful every two hours, or at longer intervals as the individual case requires.

For children of ten years or more, the dose is from one-quarter to one-half teaspoonful; for children of three years or more, five to ten drops.

---

The composition of GLYCO-HEROIN (SMITH) has not been modified in the slightest degree.

---

**MARTIN H. SMITH COMPANY**  
New York, U.S.A.

SOLE BRITISH AGENTS:  
T. CHRISTY & CO., OLD SWAN LANE, LONDON, E.C. 4.

Prescribed by the Medical Profession for 35 years.

*The BRITISH MEDICAL JOURNAL says :*

"Benger's Food has, by its excellence, established a reputation of its own."

*"Benger's" is a Food of  
highest nutrient value!  
palatable and most easily assimilated,  
soothing and sustaining."*

It is *always* to be prepared with fresh cow's milk, is especially assimilable to weakened or worn-out digestive systems or to persons prostrate with illness, *because it contains the active natural digestive principles, Amylopsin and Trypsin.*

When prepared with fresh, new milk, both the Food itself, and the milk with which it is prepared are partially digested to any desired extent for easy absorption.

This self-digestion is under control. It is regulated by allowing the Food to stand 5 to 45 minutes at one stage of its preparation. Its progress is stopped by simply boiling up.



for INFANTS, INVALIDS,  
AND THE AGED,

is sold throughout the World by Chemists, &c., in sealed tins

*Full particulars will be sent post free on application, to any member of the medical profession.*

BENGER'S FOOD Ltd., ———— Otter Works, MANCHESTER, Eng.

NEW YORK (U.S.A.) 92, WILLIAM STREET. SYDNEY (N.S.W.) 117, PITT STREET.  
Canadian Agents—National Drug & Chemical Co., Ltd., 34, St. Gabriel Street, MONTREAL, and depots  
throughout Canada.

N.B.—BENGER'S FOOD is the direct outcome of the pioneer work on digestive ferments, by the late Sir William Roberts, M.D., F.R.S., and the late Mr. F. Baden Benger, F.I.C., F.C.S., in 1880, since when it has been the premier dietetic preparation of its kind in the British Empire.



## THE ORIGINAL COLLOIDAL PREPARATIONS FOR MEDICINAL USE

**Collosols** are pure and stable colloidal solutions, isotonic and isomorphic with the elements of the body.

CROOKES'  
**COLLOSOLS**

**Collosols** are tested by ultramicroscopic, bacteriological, and clinical experiment.

### COLLOSOL SULPHUR.

This Collosol is of proved therapeutic value in Fibrositis, Arthritis Deformans, Neuritis, and in diseases of the skin such as Generalised Dermatitis, Acute Psoriasis, Acne, and Seborrhœa.

It is prepared in five different forms—for external use and bath medication, for internal administration, for injection, and as a cream, with which the affected part is gently massaged. Also as an oil for the scalp.

### COLLOSOL IODINE.

This Collosol consists of Iodine in its most active form, and yet non-toxic and non-staining. It never causes nausea and never sets up iodism.

For its efficacy in parasitic affections, see *British Medical Journal*, May 12th, 1917, p. 617. **COLLOSOL IODINE OIL.**—For chilblains, ulceration, etc. Does not stain the skin. In boiling water as an inhalation for tonsilitis and bronchial catarrh.

#### COLLOSOL MANGANESE,

for the treatment of Boils, Carbuncles, and other coccic infections. Also for the treatment of Anæmia.—See *British Medical Journal*, August 2nd, 1919, pp. 135-6.

#### COLLOSOL ARGENTUM.

It is specially indicated in superficial bacterial infections such as gonorrhœa, cystitis, infective wounds, and diseases of eye, ear and mouth. Also by internal administration in intestinal affections.

### COLLOSOL SELENIUM.

For inoperable malignant disease.

Among the beneficial results observed in 19 cases treated with this colloid *the earliest and most striking is diminution or disappearance of pain.*—See *British Medical Journal*, October 11th, 1919, p. 463.

Prepared in two forms for intramuscular and intravenous injection respectively. The strength is identical—0.05 per cent.—and the "solution" is isotonized. "The bulk of my observations have been made with the 'intramuscular solution,' which seems quite harmless and efficacious given intravenously."—See *British Medical Journal*, October 18th, 1919, p. 516.

Literature, and Reports from

**THE CROOKES LABORATORIES,**

**22, CHENIES STREET, TOTTENHAM COURT ROAD, W.C. 1.**

Telephones: MUSEUM 3663 & 3697.

**BRITISH COLLOIDS LIMITED.**

# DIET IN CONVALESCENCE

'Ovaltine' unites two  
qualities of diet which are  
essential in convalescence.

MAXIMUM NUTRITIONAL VALUE  
WITH  
MINIMUM DIGESTIVE STRAIN.

# OVALTINE

TONIC FOOD BEVERAGE

'Ovaltine' advantageously displaces routine  
Egg and Milk Diet, and does not burden  
the patient's digestion or tolerance.

It is distinguished from ordinary invalid foods  
in being unusually rich in organic phosphorus  
compounds and digestive ferments.

'Ovaltine' promotes healthy increase in weight,  
restoration in tone and general recuperation.

*Supplied by all Pharmacists.  
Specially low prices are quoted to  
Hospitals and kindred Institutions,  
on direct application to the makers.*

**A. WANDER Ltd., 45, COWCROSS STREET, E.C. 1.**





*R.*

# Allenburys' Pastilles

*For all the common affections of the Larynx & Pharynx.*

No. 9. Menthol  $\frac{1}{10}$  grain, Cocaine  $\frac{1}{10}$  grain, Red Gum, 2 grains.

No. 29. Rhatany 2 grains, Cocaine Hydrochlorate  $\frac{1}{10}$  grain.

No. 48. Tannin, Cayenne and Black Currant.

No. 75. Formaldehyde 1 minim, Menthol  $\frac{1}{10}$  grain.

*Sample tin containing any six varieties of the pastilles will be sent upon request.*

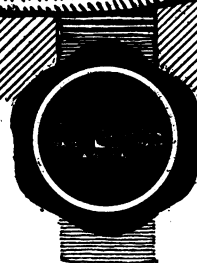
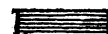
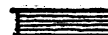
*There are 81 combinations in the series — a pastille for every condition*

*Sole Manufacturers*

**Allen & Hanburys Ltd.**

LONDON • PARIS • DURBAN •

BUENOS AIRES • TORONTO • SHANGHAI



PIONEERS AND EMPIRE BUILDERS: FIRST PERIOD—No. 1  
1,000,000 to 500,000 B.C. (*speculative*)

TRADE  
MARK

'TABLOID' BRAND

# Cascara Sagrada

'TABLOID' CASCARA SAGRADA  
(Dry Extract) is supplied  
to the medical profession as  
follows:—

|          |    | bottles of 25 |     | bottles of 100 |
|----------|----|---------------|-----|----------------|
| gr. 1    | at | 6d.           | and | 1/3            |
| gr. 2    | "  | 7d.           | "   | 1/6            |
| gr. 3    | "  | 9d.           | "   | 2/3            |
| gr. 4    | "  | 10d.          | "   | 2/3            |
| gr. 5    | "  | 1/0           | "   | 3/0            |
| 0.15 gm. | "  | 7d.           | "   | 1/6            |
| 0.25 gm. | "  | 10d.          | "   | 2/3            |

Plain or Sugar-coated

No matter where your pre-  
scription may be dispensed,  
by writing 'TABLOID' you  
will ensure the supply of  
an extract prepared with  
scientific care from fully-  
matured *true* Cascara Sagrada  
bark. 'TABLOID' CASCARA  
SAGRADA is readily and com-  
pletely soluble and of the  
highest therapeutic efficiency.

Always write the word

*'Tabloid'* in full

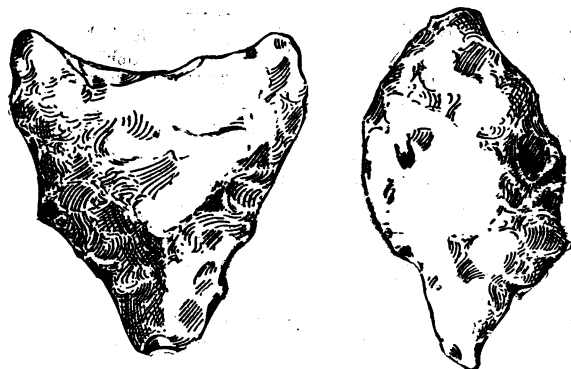
For fuller particulars, see Wellcome's Medical Diary



**BURROUGHS WELLCOME & CO., LONDON**  
NEW YORK MONTREAL SYDNEY CAPE TOWN MILAN  
SHANGHAI BUENOS AIRES BOMBAY

All communications intended for the Head Office should be addressed to **SNOW HILL BUILDINGS, LONDON, E.C. 1**  
London Exhibition Room: 54, Wigmore Street, W.

**TOOLS OF THE EARLIEST PIONEERS OF HUMAN INDUSTRY.**—The first step towards human estate was taken when the first pioneer belonging to the race which became Man, picked up, and used as a tool, a naturally-worn pebble of useful shape. The second stage was reached when, much later, and perhaps in default of such ready-made implements, a second pioneer shaped one for himself by trimming the edges of a fragment of flint in order to sharpen them. This he did



by striking off with another pebble a few small flakes or splinters; he thus produced a saw-like edge. The name Eoliths or "Dawn Stones" has been given to these earliest tools, two of which are here reproduced. Some authorities—an ever decreasing number, however—maintain that Eoliths are never the result of human workmanship but always of natural forces. A strong argument in favour of their "humanity" is that the beautifully-worked Palaeoliths of a later age require the Eolith as a stage in evolution, since the very high degree of skill necessary to produce the former could not have been acquired all at once. These evidences, if such they are, of the earliest human industry have been found in England—and notably in Kent and East Anglia—in Belgium, France, Spain, and Burma, and it is expected that they will come to light in many other localities as investigations proceed.

**CULTURE PHASE: EOLITHIC.**

COPYRIGHT

PIONEERS AND EMPIRE BUILDERS: FIRST PERIOD No. 2  
1,000,000 to 500,000 B.C. (*speculation*)

# 'KEPLER'

(Trade Mark)

## Cod Liver Oil with Malt Extract

Presents the finest Cod Liver Oil so incorporated with 'Kepler' Malt Extract that easy assimilation is ensured.

It is so palatable that even fastidious patients and children take it readily.

The word 'KEPLER' is important. If you omit it your patient is liable to obtain an inferior product.

*In  
Special  
Cases  
Prescribe*

'KEPLER' COD LIVER OIL  
with MALT EXTRACT

- „ AND CHEMICAL FOOD  
(Phosphates Compound)
- „ „ HYPOPHOSPHITES
- „ „ IRON IODIDE
- „ „ PHOSPHORUS

Always specify

'Kepler'  
in writing

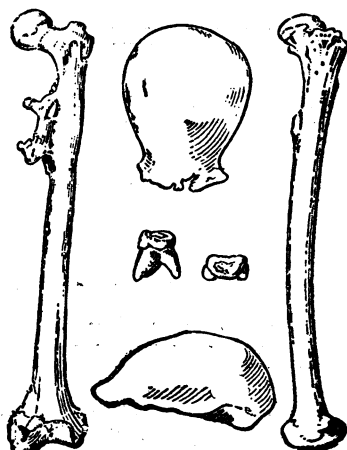
For formulæ, packings, therapeutic indications, etc., see Wellcome's Medical Diary



BURROUGHS WELLCOME & CO., LONDON  
NEW YORK MONTREAL SYDNEY CAPE TOWN MILAN  
SHANGHAI BUENOS AIRES BOMBAY

All communications intended for the Head Office should be addressed to SNOW HILL BUILDINGS, LONDON, E.C. 1

London Exhibition Room: 54, Wigmore Street, W.



### SKELETAL REMAINS OF AN EARLY PIONEER OF BIPEDAL LOCOMOTION.

The semi-human race which first acquired the power to walk erect may be considered to have produced the earliest pioneers of civilisation. Bipedal locomotion left the forelimbs free for manipulation purposes, and the evolution of the human hand began.

The oldest vestiges so far discovered of a man-like skeleton are those of *PITHECANTHROPUS ERECTUS*, the "upright standing ape-man" of Java. These remains are here reproduced: the skull cap is seen from above and in profile, the thigh bone from the front and in profile, a molar tooth from the side and from above.

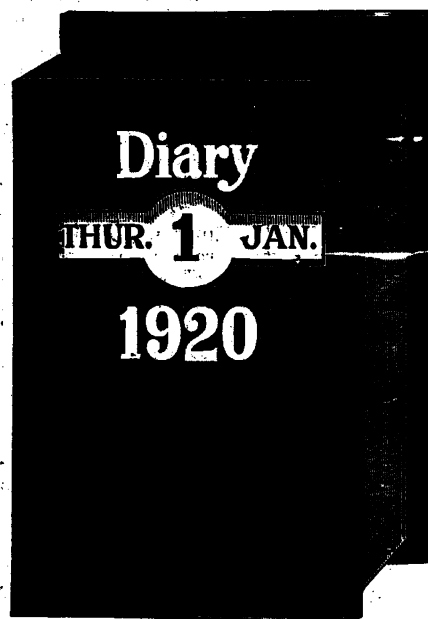
The skull is dealt with in No. 3 of this series, but here it may be noted that the teeth would seem to have been, in the main, human.

It is a very significant fact that the thigh bone is fully adapted to the erect attitude and is almost entirely human in character. *Pithecanthropus erectus* attained man's stature, his estimated height being 5 ft. 8 ins.

Culture Phase: Eolithic?

COPYRIGHT

THE  
**ANGLO-FRENCH DRUG**  
Co., Ltd.,  
are again issuing  
their Block Diary,  
which has been appre-  
ciated by Medical  
Men all over the World  
for several years.

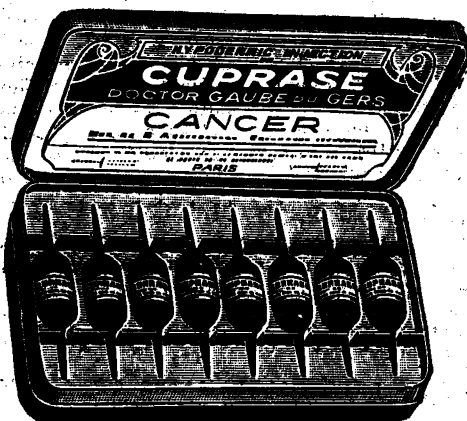


Owing to the great  
increase in the prices  
of labour and  
materials we have  
reluctantly been  
obliged to make a  
charge for the  
1920 issue.

PRICE ... 2/6.

The  
Medical  
Treatment  
of Cancer.

INTRAMUSCULAR



INJECTION.

In boxes  
containing  
8 ampoules.

LITERATURE, FORMULAS, CLINICAL REPORTS and PRICE LISTS to the PROFESSION on REQUEST.

The **ANGLO-FRENCH DRUG COMPANY, Ltd.**, 238a, Gray's Inn Road, LONDON, W.C. 1.

Telephone: HOLBORN 1311.

Telegrams: "AMPSALVAS, LONDON."

WEST END DEPOT: **MODERN PHARMACALS**, 48, Mortimer Street, W. 1. Telephone: MUSEUM 564.

GLASGOW: Mr. W. B. RODGER, 69, St. George's Mansions, Charing Cross.

IRELAND: Mr. D. L. KIRKPATRICK, 95, The Mount, Belfast.

NEW YORK: 1270 BROADWAY.

MONTREAL: DANDURAND BUILDING.

PARIS: 5, RUE CLAUZEL.

JAMAICA: Mr. A. NOEL CROSSWELL, 52, King Street, Kingston.

INDIA: P.O. Box 460, Bombay. P.O. Box 86, Calcutta.

**"Nutresco"****Super-Foods**

THESE foods are all based upon the employment of digested BEEF—in a solid or fluid form—together with the other Food Constituents.

This result has only been possible owing to the means—long sought—of producing scientifically and in a wholesale manner the products of Meat in a state of ultimate and complete digestion, (albumoses and peptones.)

Some of the Company's Preparations are as follows:—

**"CARNESCO."**

A Meat Extract. Guaranteed to contain at least 80% of the albumoses and peptones of fresh Beef.

**"BOVESCO."**

A Beef Tea. Very palatable and nourishing by reason of its high percentage of digested Beef products. "Bovesco" is prepared Seasoned or Unseasoned.

**"VINESCO."**

A really nutritive Wine composed of a high-class Port. Guaranteed to contain a proteid content of 3% soluble, tasteless, and fully-digested Beef. An ideal nutritive stimulant in Influenza and for Convalescent use.

**NUTRESCO INVALID FOOD.**

Composed of semi-digested starches and soluble proteids of Beef and Milk. Very digestible, sustaining and palatable.

**"NEURESCO."**

A tonic powder preparation, containing a high percentage of soluble proteid matter derived from Beef, eggs and milk. Rich in organic phosphorous and in the vitamines principles.

**"MALTESCO Nos. I, II, III."**

An excellent Malt Extract of high diastatic power, containing additions of the principles of digested Beef in varying proportions. Maltesco III has also an addition of 15% Cod Liver Oil.

A special Convalescent MALTESCO COURSE is put up by the Company consisting of four 1-lb. jars graduated so as to contain increasing proportions of their fat and proteid contents. This "COURSE" has been found of especial value in ensuring a progressive and sustained treatment leading to a well established convalescence. Very palatable.

**"SYRESCO."**

A Syrup of Peptones containing the fully-digested Beef-principles in a fluid and palatable form.

**NUTRESCO CHOCOLATE, CARNESCO CAMELS, NUTRESCO BISCUITS, ETC., ETC.**

Nutresco Preparations are ideal for use in states of mal-nutrition or faulty assimilation whether organic or functional in origin, and most of these Preparations are equally suited to every-day use by reason of their palatability and highly nutritive qualities. Copies of Analytical Reports and Medical opinions on application. All packets, etc., contain the Company's guarantee as to composition and percentage. World wide Patents. Gold medals, etc. Striking clinical testimony.

Samples forwarded gratis on receipt of Physicians card to—Manager, NUTRESCO HOUSE, DOLBEN STREET, BLACKFRIARS, S.E. 1.

**NUTRESCO LTD., Johannesburg, London, Southampton.**

**"MAXIMUM IN MINIMO."**

# "Semplolin"

(Trade Mark)

**"SEMPROLIN"****Emulsion**

with

**Bismuth & Pepsin.**

*Whilst the Bismuth and Pepsin exert their fullest therapeutic effects the Liquid Paraffin not only combats the constipation which follows the administration of Bismuth, but also assists the mechanical action of that agent.*

**Emulsion**

***Containing 60% of the Purest***

***High Viscosity Liquid Paraffin.***

**ISSUED** as Plain Emulsion; and also in 12 combinations, e.g., Iron, Bismuth and Pepsin, Salol.

*In 8 oz. and 16 oz. Bottles.*

*Samples Free to Medical Men.*

**THE Wm. BROWNING CO., Ltd.,**  
Albert Works, Park St., N.W. 1.



Instruments must possess three qualities:

1. Great strength.
2. Immunity from rust and stains.
3. Resistance to wear.

## FIRTH'S STAINLESS STEEL

combines these three essential qualities. It is the ideal material for modern surgical instruments.

THOS. FIRTH & SONS LTD.  
SHEFFIELD.

### CATALOGUE OF SECONDHAND SURGICAL INSTRUMENTS



#### OSTEOLOGY, MICROSCOPES, POST FREE

Telephone  
CITY 1708.

Half Sets of Osteology, Articulated Skeletons and Disarticulated Skulls. Secondhand Surgical Instruments, Osteology, and Microscopes bought, sold and Exchanged.

MILLIKIN & LAWLEY, 165, STRAND, LONDON, W.C. 2.

### Dr. CHAUMIER'S CALF LYMPH

GLYCERINATED AND REINFORCED  
THE CHEAPEST AND  
MOST ACTIVE LYMPH.

PREPARED UNDER THE

*Most Minute Antiseptic Precautions.*

Supplied in Tubes, sufficient to vaccinate 1 or 2 persons at 8d. each. 10 persons at 1s. 3d. per tube. 25 persons at 2s. 3d. per tube. Collapsible tubes (40 vaccinations) 3s. 9d. each.

Packing and postage 2d. in addition.

Agents for Great Britain:

**ROBERTS & CO.,**  
76, New Bond St., LONDON, W.

### BRASS NAME PLATES,

For the Profession.

*The Plates are manufactured in stout metal, deeply engraved, mounted on polished mahogany blocks, with fastenings ready for fixing.*

**COOKE'S (Finsbury), Ltd.,**  
Brass Plate Engravers, Memorial Brasses, &c.  
FINSBURY PAVEMENT HOUSE, LONDON, E.C. 2.

Telephones: London Wall 573 and 5179.  
SEND FOR NEW ILLUSTRATED CATALOGUE.

### "Tycos" Sphygmomanometer

for the quick and accurate determination of both DIASTOLIC and SYSTOLIC readings of Arterial Blood Pressure. Obtainable from all reputable dealers.—Particulars free from **SHORT & MASON, Ltd.**, Macdonald Road, Walthamstow, London, E. 17.

## KOND'S EUONYMISED COCOA.

What is it?

*A delicious Beverage, taking the place of Tea, Cocoa, or Coffee.*

Why take it?

Its use is attended with a marked increase of appetite and rapidity of digestion: all feelings of heaviness after meals disappear; and an increase of the natural flow of bile takes place. It is not aperient, except in repeated doses, but the increased activity of the liver is valuable in removing constipation. It is used in stomach or liver disorders, alcoholism, slow digestion, overwork, depression, loss of appetite, in cases where tea and coffee are not desirable, sedentary habit of life, gout, rheumatism, and biliousness.

Euonymised Cocoa can be freely taken by those unable to take ordinary Cocoas.

The **Euonymin** is taken in the form of a hot infusion in a delicious beverage. Its action in this form is incomparably more direct and powerful than when taken in any other forms.

*Highly recommended by the Medical Profession, from whom we have received hundreds of testimonials.*

**SOLD IN TINS 1s. 6d. and 2s. 6d.**

from Grocers or Chemists;  
or from the Wholesale Depôts;

**MAY, ROBERTS & CO., Ltd.,**  
9, Clerkenwell Road, LONDON, E.C.

### J. H. HAMILTON & CO. LTD.

MAKERS  
OF FINE  
EVENING  
DRESS



*Faced and  
lined silk.*  
From  
£12 12s. 0d.  
nett.



10, GEORGE STREET,  
Hanover Square, W. 1.

Telephone:

Mayfair 387.

### BRASS DOOR PLATES

Made and Engraved.

12x9 ... 23/6 15x10 ... 35/-

INCLUDING ENGRAVING.

SEND FOR SPECIMEN PLATES.

**THE ENDACOTT ENGRAVING CO.,**

Verulam Street, Gray's Inn Road,  
LONDON, E.C. 1.

### MICROSCOPES

SPECTROSCOPES bought, sold, or exchanged.  
**JOHN BROWNING (Dept. 2), 146, Strand, W.C. 2.**  
ESTABLISHED 1765. Tel.: Central 7804.

### Memorial Brasses & Name Plates.

—Send for List 18 (Memorials) or List 19 (Name Plates). Special Designs submitted.

**F. OSBORNE & CO., Ltd.,** ACTUAL MAKERS  
27, EASTCASTLE ST., OXFORD ST., LONDON, W. 1  
Estab. 1874. Tel.: MUSEUM 2264.

### TAYLOR'S TYPEWRITERS

SELL, HIRE,  
HIRE PURCHASE,  
EXCHANGE, BUY AND  
REPAIR ALL MAKES  
of Typewriters and  
Duplicators.  
Office Furniture.

Write for Bargain List 52.

74, CHANCERY LANE, W.C. 2. (Holborn 4811), and at  
92, QUEEN ST., CHEAPSIDE END, E.C. 4. (Bank 8325)

Established 1884.





# WHEN YOU NEXT CONSIDER YOUR MOTOR CAR INSURANCE

OBTAIN PARTICULARS OF

# DREADNOUGHT MOTOR POLICIES

ISSUED AT

# LLOYD'S.

The reputation for Efficiency of Service, Prompt Claim Settlements and Simplicity of Contract in Modern Motor Car Insurance was obtained for Motorists by Lloyd's Underwriters.

**LOW PREMIUMS. WIDEST COVER.  
IMMEDIATE REPAIRS ANYWHERE.**

Prospectus and Rates from—

Secretary—MEDICAL INSURANCE AGENCY,

429, Strand, London, W.C. 2.

# THE BURBERRY

The Super-Weatherproof

**R**EPRESENTS the most economical and distinguished form of protection in out-door Dress for war-time.

**THE BURBERRY**, by its efficient resistance to rain and winds, ensures comfort and security under conditions entailing prolonged exposure to chill and damp.

**THE BURBERRY**, by faultless natural ventilation, entirely avoids the vitiated heat of macintosh or rubber-lined coats.

**THE BURBERRY** is airy light and gives a splendid sense of freedom, whilst the strong, yet supple, texture of its material imparts exceptional hard-wearing properties.

Patterns, Prices and Catalogue sent on application.

**BURBERRYS' CLEANING WORKS.**

Men's and Women's Dress Cleaned by the most up-to-date process. Weatherproof garments cleaned and reproofed. Price list sent on request.

**Barberrys' Basingstoke House** treats direct commissions from Doctors as approval orders, i.e., replaces with its own cheque returned non-approved garment.

# BURBERRYS BASINGSTOKE

(LONDON—HAYMARKET, S.W. 1.)



Every Burberry  
Garment bears a  
Burberry Label

# ALLIANCE DRUG AND CHEMICAL CO.

34, Leadenhall St., London, E.C. 3.

Established 1812—Reorganised 1902.

The Company specialises in providing the Medical profession at the lowest possible inclusive prices (no charge for Bottles, etc., or Cases, etc.) with pure and reliable Drugs, Chemicals, Pharmaceutical Preparations, Compressed Tablets, Pills, Surgical Dressings, and Stock Mixtures of approved Formulae as used by the London and other Hospitals. We append a few sample prices for guidance of the great saving that can be effected, and many instances our Clients have written thanking us having saved them

# 40 per cent.

of their usual Yearly Account for Drugs. This saving is not reflected in the quality of our Goods, but is primarily due to not employing TRAVELLERS, thus saving the purchaser the cost of the Travellers' Salaries and expenses which greatly enhance the prices the usual Drug Houses have to charge.

**NOTE.**—Only Terms Net Cash with order without discount, or orders received through London Merchants or Bankers. Goods carriage forward. All packages free. Export cases extra.

**PLEASE WRITE  
FOR NEW DETAILED  
PRICE LIST.**

**INFUSIONS, CONCENTRATED.**

1-7 in 6lb. Bottles.

|   |                   |
|---|-------------------|
| Aurant @ 3/4 lb.  | Gentian @ 1/8 lb. |
| Aurant Co. @ 3/4 lb.  | Rhei @ 4/8 lb.    |
| Columba @ 1/10 lb.  | Senega @ 5/3 lb.  |
| Cinchon Acid @ 3/10 lb.                                       |                   |
| Lassars Paste, 14 lbs. @ 1/10 lb.; 1 lb. @ 2/2 lb.            |                   |
| *Lin. Belladon. Meth., 5 lbs. @ 9/- 1 lb. @ 9/3 lb.           |                   |
| *Liq. Ether Nitros (Sp. Ether Nit. Substitute 5 lb. @ 2/3 lb. |                   |
| *Liq. Ammon. Acet. Conc. (1-7), 6lb. @ 1/10 lb.               |                   |
| " " Aromat., 6 lbs. @ 1/2 lb.                                 |                   |
| Morph. Hydrochlor. P.B., 1 oz. @ 17/6 oz.                     |                   |
| Petroleum Jelly Flav. P.B., 7 lbs. @ 9/4 lb.                  |                   |

**PILLS TASTELESS COATED.**

Potass. Iodid. P.B., 3 lbs. @ 17/- per lb.  
Soda Sulphas Featherby cryst., 7 lbs. @ 3d. lb.  
Sp. Ether Nit. P.B., 48 lbs. at 5/11 lb.; 1 lb. @ 6/2.  
Sp. Amon. Aromat. P.B., 5 lbs. @ 4/10 lb.  
Syr. Cascara Aromat. P.B., 6 lbs. @ 3/- lb.  
" Glycero-Phosph. Co., 6 lbs. @ 3/- lb.

**SYRUPS.**

Aurant. P.B., 7 lbs. @ 2/3 lb.  
Easton B.P., 7 lbs. @ 2/3 lb.  
Ferri Iodid. P.B., 7 lbs. @ 1/11 lb.  
Ferri Phosph. Co., 7 lbs. @ 1/11 lb.  
Hypophosph. Co., B.P.C., 7 lbs. @ 1/11 lb.  
Pruni. Virg., B.P., 7 lbs. @ 1/7 lb.  
Rhamni, 7 lbs. @ 1/6 lb.  
Rhei, P.B., 7 lbs. @ 1/7 lb.  
Scilla, P.B., 7 lbs. @ 1/1 lb.  
Senna, P.B., 7 lbs. @ 1/7 lb.  
Tolut, P.B., 7 lbs. @ 1/4 lb.

**TABLETS COMPRESSED.**

|                                   | Per 1000 |
|-----------------------------------|----------|
| Blaud's (Sugar-Coated), gr. 5     | 5/6      |
| Nitroglycerini, P.B., gr. 1-50th  | 5/9      |
| Perchloride of Mercury (Coloured) | 15/-     |

One Tablet in 1 pint of Water is equivalent to 1-1000.

Thyroid Gland, gr. 5 ... 11/3

We endeavour to adhere to prices quoted, but as same fluctuate from day to day, they must be considered as subject to change without notice.

**TINCTURES.**

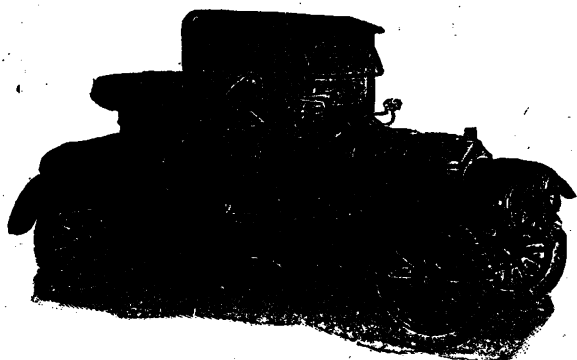
In 5-lb. Bottles.

| B.P. Aques.           |  | D.P. Aqua.           |
|-----------------------|--|----------------------|
| Belladon ... 5/6 4/3  |  | Hyoscyam ... 5/6 2/9 |
| Benzoin Co. 6/3 —     |  | Nucis Vom. 4/7 1/8   |
| Camph. Co. 4/4 2/1    |  | Opil ... 4/8 4/8     |
| Card. Co. ... 3/4 1/8 |  | Quin. Amon. 4/8 —    |
| Gentian Co. 3/4 1/7   |  | Rhei Co. ... 2/9 2/- |

Ung. Acid Boric P.B., 28 lb. pall @ 1/6 lb.  
" Hydiarg. P.B., 7 lbs. @ 4/7 lb.  
" Ammon., 7 lbs. @ 2/11 lb.  
" Ichtamolis B.P.C., 7 lbs. @ 3/6 lb.  
" Zinci Ox., Benz., 28 lbs. @ 2/6 lb.

\*Minimum quantity at these prices: Home Trade 1.  
Export 12 Winchester Quarts assorted.

# The SINGER "10" AN IDEAL DOCTORS CAR.



THE NEAT AND HANDSOME DESIGN OF THE SINGER "10" WILL ALWAYS IMPRESS THE OBSERVER AT A GLANCE. BUILT THROUGHOUT BY HIGHLY SKILLED WORKMEN FROM THE FINEST MATERIALS PROCURABLE, WE HAVE NO HESITATION IN RECOMMENDING IT TO STAND THE HARD WEAR AND TEAR WHICH A MEDICAL PRACTITIONER'S CAR IS SUBJECT TO.

WE ARE NOW BOOKING ORDERS, WHICH WILL BE PLACED ON OUR WAITING LIST, DELIVERIES OF WHICH WILL BE MADE STRICTLY IN ROTATION.

*Write to day for full particulars—*

**SINGER & CO., LTD.**  
AND 17 HOLBORN VIADUCT, LONDON, E.C. **COVENTRY, ENG.**

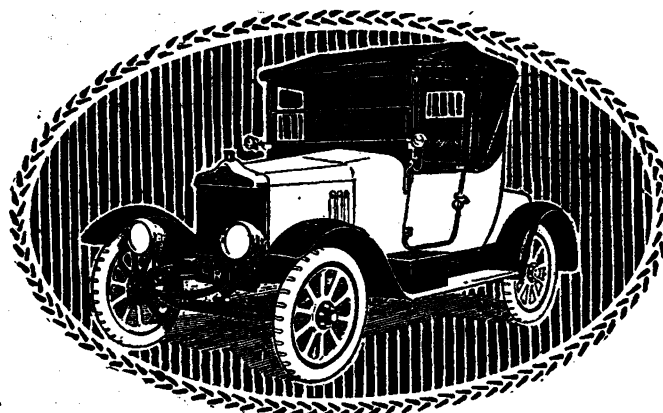
The All  British  
**Standard** Light Cars  
*Specially designed for the Owner-Driver*

**His Standard of Comfort,  
Economy, Stability, Easy  
Control, and Ample Power.**

*Send your name and address for full particulars.*

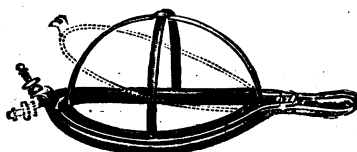
**The Standard Motor Co., Limited, Coventry.**

London Showrooms: 49, Pall Mall, S.W.1.



*Godalms*

## An Improved Chloroform Mask.



**Price  
6s. 9d. Each.**

**MAW'S Improved Chloroform Mask** (Schimmelbusch's Pattern) is made with a screw clamping nut, as illustrated. This is a distinct advantage over the ordinary unreliable spring attachment.

There is no danger of the frame springing open, because the screw makes a secure fastening and obviates all danger of accidents, no matter how many pieces of lint are used.



**S. MAW · SON · & · SONS · LTD.** Surgical Instrument  
Makers.  
DESK H, 7/12 ALDERSGATE ST.  LONDON · E.C.1 · ENGLAND.

**MOTOR CAR INSURANCE**  
**MOTOR CYCLE INSURANCE.**



**THE "WHITE CROSS"**  
**DOCTOR'S POLICY**  
**SPECIAL BENEFITS for MEDICAL MEN ONLY.**

APPROVED BY

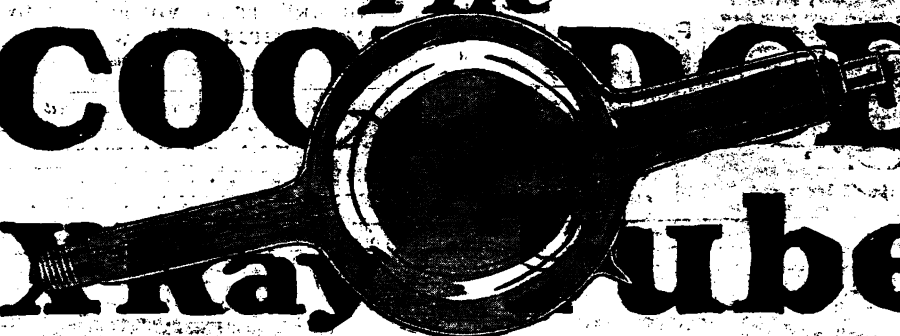
**THE MEDICAL INSURANCE AGENCY.**

Full Particulars on request.

THE SECRETARY, 429, Strand, W.C.

"Radiologists will find that in this tube they possess an instrument of precision far in advance of any previously produced."

# The COOLIDGE X-ray Tube



USED BY SIR J. J. THOMSON AND MOST OF THE LEADING WORKERS.

*The Coolidge Tube can be demonstrated by and obtained immediately from the principal dealers in X-ray Apparatus.*

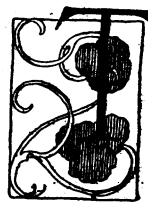
Send for free descriptive list No. 10760.

The British Thomson-Houston Co., Ltd.,

*(Owners of the British Patents)*

Mazda House, 77, Upper Thames Street, London, E.C. 4.

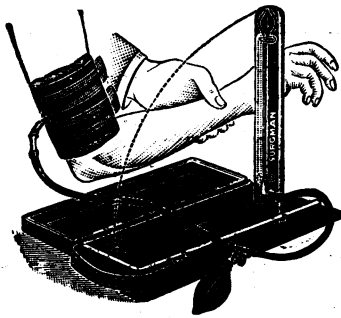
# Arrol-Johnston

 THE PRICE of the new 15.9 h.p. Arrol-Johnston Car is £625, inclusive of hood, screen, body, electric lighting and starting set, 5 detachable disc wheels, 5 Grooved Dunlops (815×105 mm.), mechanical horn, &c., &c. The model is built largely in Aircraft Material, can touch 50 m.p.h. on the level, take any hill on top gear and is absolutely silent.

CATALOGUES from  
ARROL-JOHNSTON, Ltd.,  
Dumfries.

LONDON AGENTS:  
Leverett, Thorp & Kearton, Ltd.,  
122, New Bond Street, W. 1.

# THE "SURGMAN" SPHYGMOMANOMETER



*The advantages claimed for this instrument are:—*

Its simplicity. The mercury cannot be spilled.  
The systolic pressure can be read accurately and immediately.  
Its compactness, size of case outside being only  $12 \times 4\frac{1}{2} \times 3$ .

Price, complete in leather-covered case with leather handle,  
**£2 7s. 6d.**

*We shall be pleased to send on approval if desired*

**THE SURGICAL MANUFACTURING CO., LTD.**

83-85, Mortimer Street, London, W. 1.

And at 8, PARK QUADRANT, GLASGOW.

## HOLLAND'S

PATENT  
**FOOT APPLIANCES.**  
RENOUNED FOR  
**EFFICIENCY & ELASTICITY.**

T. HOLLAND & SON, 46 SOUTH AUDLEY STREET, LONDON W.

**JOHN PLAYER & SONS**  
beg to draw the attention  
of connoisseurs to

**"PERFECTOS" No. 2**  
Cigarettes. They are  
distinguished by a superb  
delicacy, the result of a  
matchless blend of the  
Finest Virginia Tobacco.

**"PERFECTOS FINOS"**  
are a larger Cigarette  
of the same quality.

### "PERFECTOS" No. 2

**VIRGINIA CIGARETTES.**

10 - 9½d.    20 - 1/7    50 - 3/10    100 - 7/2

**JOHN PLAYER & SONS, NOTTINGHAM.**  
The Imperial Tobacco Co. (of Great Britain and Ireland), Ltd.

## BURBERRYS' 1920 SALE

A limited number of **Weatherproofs and Suits**  
at very advantageous prices.

**DURING JANUARY**

**THE BURBERRY WEATHERPROOF**, in Burberry  
Gabardine. Men and Women.

**SALE PRICE 84/-.** Postage 9d.

**THE TIELOCKEN BELTED TOPCOAT**, in Burberry  
Gabardine. Men and Women.

**SALE PRICE 5 GNS.** Postage 9d.

**URBITOR TOPCOATS**, in brown, grey or green.

**SALE PRICE 7 GNS.** Postage 9d.

*Sale List post free on request.*

**BURBERRYS Haymarket LONDON S.W. 1.**

## Vitafer

**The All-British Tonic Food**

Concentrates the entire pro-  
tein of milk with all the  
forms of phosphorus used  
and needed by the body.  
The only perfect non-consti-  
pating tonic food.

*A Doctor's Sample will be sent post  
free to any Member of the Profession.*

In Tins, 1/6 & 2/6, of all Chemists.  
Larger Sizes, 4/6 & 7/6.

Sole Manufacturers:  
**SOUTHALL BROS. & BARCLAY, LTD.,**  
Lower Priory, Birmingham.

## VICTORY BONDS

purchased after the 12th July will not be available  
for the payment of Death Duties for their full face  
value until six months have elapsed.

**THE VICTORY BOND POLICIES**

Issued by the

**NATIONAL PROVIDENT INSTITUTION**  
provide for the payment of the full amount of the  
face value of the Bond from the date of issue.

*Particulars post free on application to—*

**2, GRACECHURCH STREET, E.C. 2.**

TEST ALL SO-CALLED

# DIABETIC FOODS

WITH IODINE SOLUTION BEFORE RECOMMENDATION

## CALLARD'S DIABETIC FOODS

STAND THIS AND ALL OTHER TESTS.  
SAMPLES FREE.

**CALLARD & CO.,** Food Specialists to all  
the great Hospitals.  
74, REGENT STREET LONDON, W.

# SULPHAQUA

LARGELY AND SUCCESSFULLY PRESCRIBED IN

**SKIN DISEASES, RHEUMATISM, GOUT, NEURASTHENIC CONDITIONS IN ARTHRITIC SUBJECTS, &c.**

And as a valuable addition to the Inunction TREATMENT OF SYPHILIS with Mercury.

**Employed in BATH and TOILET BASIN.**

Possesses powerful Antiseptic, Antiparasitic, and Antalgic properties. Relieves intense Itching and Pain, is WITHOUT OBJECTIONABLE ODOUR, and does not blacken the bath enamel.

**SULPHAQUA SOAP**

Recommended for the Skin and Hair. Especially useful in the treatment of Acne and Seborrhoea of the Scalp. Largely used in dermatological practice.

In Boxes of  $\frac{1}{2}$ -doz. and 1-do. BATH CHARGES, 2 doz. TOILET CHARGES, and  $\frac{1}{2}$ -doz. SOAP TABLETS.

*Samples and Literature on request. Advertisers only to the Profession.*

**THE S. P. CHARGES CO., Manufacturing Chemists, St. Helens, Lancs.**

"SULPHAQUA" stocked by the leading Wholesale Drug Houses in Canada, Australia, New Zealand, South Africa, India, &c.

**LAC BISMUTHI**

(SYMES)

This preparation is a Hydrate of Bismuth, and is superior to diluted with water, or in combination with Alkalies, Hydrocyanic Acid, &c. Dose from one to two teaspoonfuls. In combination with Cerium Hydrate Lac Bismuthi et Cerii it has been found specially useful in relieving the sickness which occurs during pregnancy. Obtainable from all Chemists.



**LAC BISMUTHI ET CERII**

(SYMES)

all other forms in which Bismuth has been prescribed. It may be given alone or in combination with Cerium Hydrate. Dose from one to two teaspoonfuls. In combination with Cerium Hydrate Lac Bismuthi et Cerii it has been found specially useful in relieving the sickness which occurs during pregnancy. Obtainable from all Chemists.

**SYMES & CO., Ltd., Manufacturing Chemists, LIVERPOOL.** London Agents: KERFOOT & CO., 139, Holloway Road, N.

Because it is the richest in Vitamines, there is no tonic food more serviceable in wasting diseases.

# "ROBOLEINE"

*Delicate children say there is no tonic food that they find so palatable.*

**OPPENHEIMER, SON & CO., Limited,**

179, QUEEN VICTORIA STREET, LONDON, E.C. 4.

Entirely British House since Foundation in 1891.

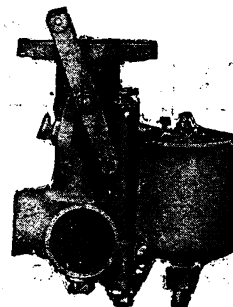
Samples and Literature on application.

**Hurried out at Night**  
You can rely on the car starting  
at once ——— if it has a

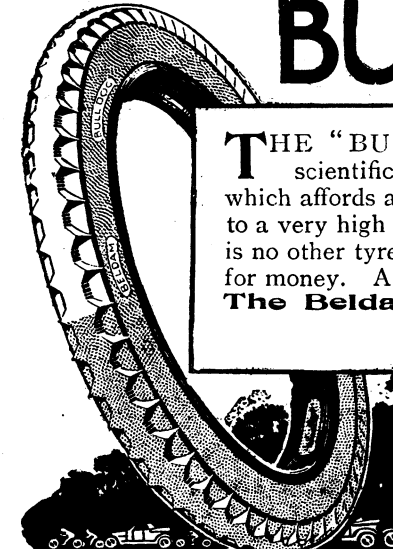
# ZENITH

## Carburetter

**ZENITH CARBURETTER CO., Ltd., 40-42, Newman St., W.1.** Phone: MUSEUM 4812-4813.



Send for Booklet.




# BULLDOG

**THE "BULLDOG" Tyre** is made with the scientific Beldam design of rubber tread—which affords an unparalleled road grip. It is built to a very high standard at a moderate price—there is no other tyre which gives so much quality-value for money. All standard sizes made.

**The Beldam Tyre Company, Ltd.,**  
Brentford, Middlesex.

**ALL-BRITISH TYRES**



## ST. GEORGE'S RETREAT,

Burgess Hill, Sussex.

An old-established licensed house under the management of the "Augustinian Sisters," for the treatment of **LADIES MENTALLY AFFLICTED**. Grounds nearly 300 acres. Drives and motoring. Marine, Brighton Residence for change. Voluntary boarders taken. Separate Villa for Feeble-Minded cases. Visiting Physicians. London 1½ hours. — For terms apply to the Superioress.  
Telephone: (Post Office 90).  
Telegrams: "Wiveisfield Green."

## NORTHUMBERLAND HOUSE,

GREEN LANES,  
FINSBURY PARK, N.

A PRIVATE HOME for the treatment of Ladies and Gentlemen suffering from Mental and Nervous Affections.

Highly situated, facing Finsbury Park.  
Voluntary Boarders received without certificates.  
For particulars apply to the Resident Physician,  
Telephone No. 888 (North).  
Telegrams: "Subsidiary, London."

## BROOKE HOUSE,

CLAPTON, LONDON, N.

A HOME for the treatment of a limited number of Ladies and Gentlemen suffering from Nervous and Mental Diseases.

Stands in extensive grounds, and is well adapted for the treatment of Nervous disorders according to modern methods.

Resident Physician—**GERALD JOHNSTON**.  
Railway Station: Clapton. Telephone: 1648 Dalston.

## CHORLEY WOOD.

First-class NURSING HOME, Neurasthenias, Nervous Breakdowns, Rest Cures, Borderland conditions (not certifiable), has vacancies at present. Terms from ten guineas. Ladies or gentlemen. Large garden, tennis, croquet, motor, pony trap. — Write, Dr. CLAUD FOTHERGILL, Chorley Wood, Phoue, 24 Chorley Wood.

## BATH.

Lansdown Crescent.

## THE ST. CATHARINE NURSING HOME.

Beautiful position. Electric Light and Lift. Central heating. Dietetic and Electrical treatment. Plombiers douche. All chemical investigations. Telephone: 1119. Telegrams: "Nursing," Bath.

## BOURNEMOUTH.

IDEAL HOME FOR PAYING PATIENTS. Medical, Surgical, Maternity, Nerve and Chronic cases received. Massage and electrical treatment. Terms from £5 5s. Medical references.—MATRON, Hay Court, Lansdowne Road. Telephone 2336.

Near Southport. — A nice bright HOME for a few PRIVATE PATIENTS (Children) who are slightly epileptic, in connection with Home for Mentally Defective Children. Matron trained nurse. Visiting doctor. — Address, No. 117, BRITISH MEDICAL JOURNAL Office, 429, Strand, W.C. 2.

## Resident Patients. — Doctor

has a vacancy in his large Country House, Surrey, for an Invalid Convalescent or Nerve case. Delightful grounds, over 20 acres, small farm, own poultry, fruit and vegetables. Tennis, croquet, bowls, golf, bridge, and music. Terms from 5 gns. weekly inclusive. — Dr. ALEXANDER, Chertsey. Tel. 191.

# YARROW CONVALESCENT HOME, BROADSTAIRS

EXCLUSIVELY FOR CHILDREN OF WELL-EDUCATED PEOPLE OF VERY LIMITED MEANS.

100 Beds. Boys, ages 4 to 12. Girls, ages 4 to 14. Charge 15s. per week for each Child.

The usual stay is four weeks, but some wards are reserved for serious cases requiring special treatment, and for these a lengthened stay may, under some circumstances, be granted, and the age limit raised to 14 for Boys and 16 for Girls.

The Home faces the sea, and is open all the year, being as well adapted for winter as for summer residence.

There is a well-equipped operating theatre and a complete X-ray installation.

PARTICULARS CAN BE OBTAINED FROM THE SECRETARY, 6, HOLBORN VIADUCT, LONDON, E.C. 1.

## ST. ANDREW'S HOSPITAL,

DOLLIS HILL, LONDON, N.W. 2.

Telegrams: Andrews Hospital, Cricklewood.

Phone: Willesden 898.

Rooms for Private Patients. Wards and Cubicles (at inclusive fees) for gentlepeople of limited means. Medical and Surgical, but not Mental, Contagious, Consumptive, or Chronic cases. Resident Doctor. Patients are only received upon the recommendation of their own Medical Adviser.

For terms, apply to MATRON.

# GRANVILLE HOTEL,

St. Margarets Bay.

(Two Hours from London).

For the  
Cure of  
Insomnia.

A real  
Rest Cure.



A comfortable Hotel, set in its own spacious grounds, with Southern aspect; absolutely sheltered from North and East winds. Broad, Sheltered Balconies. Climate equal to any Southern Watering Place. Unrivalled Marine Scenery. No trippers. Golf at easy access. Own Farm Produce. **Apply Manageress.**

# NEWMAINS RETREAT, NEWMAINS, LANARKSHIRE,

Licensed under the Inebriates Acts.

The House is devoted to the care of LADIES of the upper classes only, who can be treated either under the Acts or as Voluntary Patients. The place stands high and the estate is extensive, with bracing air and in good shelter. It is very retired and beautiful, well situated for the treatment of Inebriety, Narcomania and other perversions, Neurasthenia, Hysteria, and Minor Mental Ailments.

No patient under Certificate of Insanity can be received.

References:—Dr. G. M. ROBERTSON, Dr. YELLOWLEES, Dr. RISIEN RUSSELL, Dr. OSWALD, and others.

Terms and particulars on application to "Superintendent, The Retreat, Newmains, Lanarkshire." Nearest Station: Hartwood, Cal. Rly

## INEBRIETY.

### DALRYMPLE HOUSE, LICKMANSWORTH, HERTS.

For the treatment of gentlemen under the Act and privately. Established 1883 by an Association of prominent medical men and others for the study and treatment of Inebriety; profits, if any, are expended on the Institution. Large secluded grounds on the bank of the River Colne. All kinds of outdoor and indoor recreations and pursuits.

For further particulars, apply to F. S. D. HOGG, M.R.C.S., &c., Resident Medical Superintendent. Telephone: 16 Rickmansworth.

## INEBRIETY.

### MELBOURNE HOUSE, LEICESTER

PRIVATE HOME FOR LADIES.

Med. Attendant: R. SEVESTRE, M.A., M.D. Cantab. Prin.: Hy. M. RILEY, Assoc. Soc. Study of Inebriety. 20 years' experience. Excellent Med. References.

For terms and Particulars apply Miss RILEY or PRINCIPAL. Telegrams: "MEDICAL, LEICESTER." Nat. Telephone: 789.

## ST. ANDREW'S HOSPITAL.

FOR MENTAL DISEASES

### NORTHAMPTON.

For the Upper and Middle Classes only. President—The Rt. Hon. THE EARL SPENCER, K.G. This Registered Hospital is pleasantly situated in 118 acres of park and pleasure grounds.

Every facility is provided for cricket, football, hockey, croquet, lawn tennis, bowls, golf, motoring, boating and gardening.

Voluntary boarders as well as certified patients of both sexes are received for treatment.

Private rooms with special attendants in the Hospital or in villas in the grounds can be arranged. The Hospital has a branch establishment at

### MOULTON PARK,

two miles from the Hospital, where there is a farm of 473 acres, which supplies the Hospital with meat, milk, and other farm produce.

### BRYN-Y-NEUADD HALL, LLANFAIRFECHAN.

The Seaside House of St. Andrew's Hospital, is beautifully situated in a park of 331 acres, close to the sea, and in the midst of the finest scenery in North Wales. Patients can enjoy good cricket, lawn tennis, croquet, golf, trout fishing and bathing. Patients or Boarders may visit this branch for long or short periods, and can have Private Rooms in Villas in the Park.

For terms and further particulars apply to the Medical Superintendent, St. Andrew's Hospital, Northampton. TELEPHONE No. 56.

## CHEADLE ROYAL.

### A HOSPITAL FOR MENTAL DISEASES, CHEADLE, CHESHIRE,

and its seaside branch.

### CLAN-Y-DON, COLWYN BAY, NORTH WALES.

The object of the above is to provide the most efficient means for the cure of mental diseases in those who belong to the upper and middle classes. Voluntary boarders as well as certified patients are received for treatment.

For terms and further information apply to the Med. Supt. W. SCOWROSE, M.R.C.S., &c., at Cheadle, or he may be seen at 72, Bridge St., Manchester, on Tuesdays and Fridays from 2 to 3. TEL.: 208 "Cheadle Hulme," 3594 "Manchester."

## Coton Hill Mental Hospital,

near Stafford.

Chairman of the Committee of Management, The RIGHT HONOURABLE THE EARL OF DARTMOUTH.—This Hospital, which is beautifully situated in a high and healthy position, with extensive grounds, cricket field, lawn tennis courts, golf links, &c., is devoted to the care and treatment of the mentally afflicted of the upper and middle classes. Terms on application. Private rooms with special attendants in the Hospital, or semi-detached villas in the grounds can be arranged.

For further particulars apply to R. W. HEWSON, L.R.C.P. & S. Edin., Medical Superintendent

## Grove House, All Stretton,

Church Stretton, Shropshire.

A Private HOME for the care and Treatment of a limited number of ladies mentally afflicted. Climate healthy and bracing. Proprietor, Dr. MCCLINTOCK.

## CITY OF LONDON MENTAL HOSPITAL,

DARTFORD, KENT.

Under the management of a Committee of the Corporation of the City of London.

Private patients are received at the rate of 31/6 and upwards per week.—Apply to the—

MEDICAL SUPERINTENDENT.

## MIDDLETON HALL,

MIDDLETON ST. GEORGE,

Near DARLINGTON, Co. DURHAM.

Private house for the care and treatment of ladies and gentlemen suffering from mental diseases.

This house, which is situated in a healthy and pleasant country, has been recently erected from plans approved by the Commissioners in Lunacy, and has been comfortably furnished throughout. Private rooms and special attendants are provided if required.

Terms to be had on application to the "Medical Officer."

## CLARENCE LODGE,

CLARENCE ROAD, CLAPHAM PARK, S.W. 4.

Station: Clapham Road and Clapham Common.

LICENSED HOME FOR MENTAL & NERVOUS PATIENTS.

Twelve Ladies only received for treatment under eminent Specialist, and given individual care and the comforts of their own homes. Suitable cases received as Voluntary Boarders.

The House is surrounded by well-wooded grounds, shady lawns for tennis, croquet, &c. Associated rooms, private rooms, or suites; moderate terms.

Illustrated prospectus from Resident Licensor, Mrs. THWAITES. T/N.: 494 Brixton.

## SPRINGFIELD HOUSE,

Near BEDFORD.

(Telephone No. 17.)

### A PRIVATE HOME FOR MENTAL CASES,

TERMS FROM 4 GUINEAS PER WEEK. (Including Separate Bedrooms for all Suitable Cases without extra charge.)

For forms of admission, &c., apply to the Drs. BOWER, as above, or at 5, Duchess Street, Portland Place, W. 1, on Tuesdays, from 4 to 5.

## THE MOAT HOUSE,

Tamworth, Staffordshire.

A HOME FOR NERVOUS AND MENTAL CASES.

Stations: L. & N. West. and Mid. Railways.

The House stands in grounds of ten acres (within five minutes' drive of either station), and is devoted to the care and treatment of a few Ladies suffering from Nervous and Mental Affections, who enjoy the comfort, privacy, and occupations of home life. Voluntary patients received without certificates.—For terms, &c., apply to Resident Licensees, EDWARD HOLINS, M.A. Cantab., or (Mrs.) S. A. MICHAUX.

## STRETTON HOUSE,

Church-Stretton, Shropshire.

A Private HOME for the treatment of Gentlemen suffering from Mental diseases. Bracing hill country. See "Medical Directory," p. 1899.—Apply to Medical Superintendent. "Phone: 10 P.O. Church-Stretton.

In Beautiful Country. 18 miles from London. Littleton Hall, Brentwood, Essex.

(400 feet above sea-level). A HOME for a few LADIES Mentally Afflicted. Voluntary Boarders Received. Large grounds. Liverpool Street half-an-hour. Stations: Brentwood, 1 mile; Shenfield, 1 mile. Vacancy. For terms, &c., apply Dr. HAYNES. Telephone & Telegrams: "Haynes, Brentwood, 45."

### "Collingwood," Cheltenham, Spa.

A REFINED NURSERY HOME for Children of any age up to seven years. Very limited number taken, home sympathies, freedom, and care.

Inclusive terms. Highest references.

Prospectus on application.

Miss DUTTON (Higher Certificate N.F.U.).

Miss ADAMSON (Qualified Hospital Nurse).

## BOREATTON PARK, BASCHURCH, SALOP.

A first-class Country Mansion especially adapted for the reception of a limited number of Ladies and Gentlemen mentally affected.

For particulars apply Dr. SANKEY.

## SOUTH DEVON.

## COURT HALL, KENTON, Near EXETER.

Private licensed house for the treatment of MENTAL DISEASES. Limited to eight lady Patients. Established 50 years.

Resident Physician BERTHA MILES, M.D. Terms on application. Telephone: Starcross 19.

## BISHOPSTONE HOUSE, BEDFORD.

PRIVATE HOME for MENTALLY AFFLICTED LADIES. Ten only received. Terms from 5 gu. weekly. Apply, Medical Officer, or Mrs. PERKS. Telephone 705.

## WYE HOUSE, BUXTON.

For the treatment of Ladies and Gentlemen mentally afflicted. Voluntary Boarders received. Situated 1,200 ft. above sea level, facing S., 14 acres of ground.—For terms apply to the Resident Medical Superintendent, W. W. HORTON, M.D. Nat. Tel. 130.

## BARNWOOD HOUSE

HOSPITAL FOR MENTAL DISEASES,

BARNWOOD, near GLOUCESTER

Telephone No. 7 Barnwood.

Exclusively for PRIVATE PATIENTS of the UPPER AND MIDDLE CLASSES.

This institution is devoted to the care and treatment of persons of both sexes at moderate rates of payment.

Under special circumstances the rates of payment may be reduced by the Committee.

For further information apply to ARTHUR TOWNSEND, M.D., the Medical Superintendent.

"Telegraphic Address, RELIEF, OLD CATTON."

Telephone, 290 NORWICH.

Nervous and Mental Affections.

LADIES ONLY RECEIVED.

## THE GROVE, OLD CATTON, Near NORWICH.

A High-class Home for the Curative Treatment of Nervous Affections. Situated a mile from the City of Norwich. Special and Separate accommodation is provided for those suffering from Hysteria, and for cases of Insipient Mental trouble who can be received as Voluntary Boarders without certificates, and occupy their own private suites of apartments. A staff of experienced nurses has been organised to take charge of patients in their own homes. For terms, &c., which are moderate and inclusive, apply to the Misses MCCLINTOCK, or to CECELIA P. OSBORNE, F.R.C.S.E. Medical Superintendent.

## THE GRANGE, NEAR ROTHERHAM.

A HOUSE licensed for the reception of a limited number of ladies of unsound mind. Both certificate and voluntary patients received. This is a large country house with beautiful grounds and park, 3 miles from Sheffield. Station, Grange Lane, G.C. Railway, Sheffield. Telephone No. 34, Rotherham. Resident Physician—GILBERT E. MOULD, L.R.C.P. M.R.C.S. Consulting Physician—CROCHLEY CLAPHAM, M.D., F.R.C.P.E.



## HAYDOCK LODGE, Newton-le-Willows, LANCASHIRE.

A PRIVATE MENTAL HOSPITAL FOR THE UPPER AND MIDDLE CLASSES ONLY, EITHER VOLUNTARY, OR UNDER CERTIFICATE.

Patients treated and classified according to their social and mental condition. Terms from £2 2s. 0d. Private apartments on special terms. Established for 60 years. Under the same management 25 years. Recovery rate 50 per cent. Situated midway between MANCHESTER and LIVERPOOL. Two miles from Newton-le-Willows Station on the L. & N. W. Railway, connecting it with all parts.

**Medical Staff.** Resident Medical Proprietor **CHARLES T. STREET, M.R.C.S., L.R.C.P., LIVERPOOL:** 47, Rodney Street. **Consulting Rooms—** MANCHESTER: Winter's Buildings, St. Ann's St. Resident Medical Superintendent **J. O. WOOTTON, M.R.C.S. ENG., L.R.C.P. LOND.** Dr. STREET. Thursday: 2 till 4. Dr. P. G. MOULD; Dr. G. E. MOULD, Tuesday and Visiting & (Sir) **JAMES BARR, LL.D., M.D., F.R.C.P., 72, Rodney St., Liverpool.** Telephone 2456 Royal. Thursday 12 to 1.30. Telephone 7611 Manchester. Consulting **W. B. WARRINGTON, M.D., F.R.C.P., 83, Rodney St., Liverpool.** Liverpool. Other days by appointment. Physicians, **G. E. MOULD, Physician for Mental Diseases to the Sheffield Royal Hospital, The Grange, Rotherham.** For further particulars and forms of admission apply Resident Proprietor, Haydock Lodge, Newton-le-Willows. Tele.: "STREET, Ashton-in-Makerfield." Tel.: 11 Ashton-in-Makerfield.

## BRISLINGTON HOUSE, near BRISTOL.

ESTABLISHED 1804.

A PRIVATE MENTAL HOSPITAL for the care and treatment of persons of the upper and middle classes of both sexes. The House is situated on an estate of 200 acres and has extensive pleasure grounds and a Farm connected with it. It lies between Bristol and Bath, 3 miles from Bristol Station, and within 2½ hours' journey from London.

In addition to the main building there are several villas, completely detached and pleasantly situated in their own grounds, where there is accommodation for suitable cases. Patients can be received without certificates as Voluntary Boarders.

For terms and further particulars apply to the Medical Superintendent. Tel.: "Fox, Brislington." Telephone: "No. 2 Brislington."

## PECKHAM HOUSE,

(ESTABLISHED 1826).

112, PECKHAM ROAD, LONDON, S.E.

Telegrams: "Alleviated, London."

Telephone: New Cross 578.

An Institution licensed for the CARE and TREATMENT of THE MENTALLY AFFLICTED of Both Sexes. Conveniently situated. Electric trams and omnibuses from the Bridges and West End pass the House. Private Houses, with electric light, for suitable cases adjoining the Institution. Holiday Parties sent to the Seaside Branch at Worthing during the Summer months.

**MODERATE TERMS.**

Apply to MEDICAL SUPERINTENDENT for fuller particulars.



## NORTHWOODS HOUSE, WINTERBOURNE, near BRISTOL.

FOR PRIVATE TREATMENT OF MENTAL DISEASES.

Situated in a large park in a healthy and picturesque locality, easily accessible by rail via Bristol, Winterbourne, Patchway, or Yate Stations. Uncertified Boarders received.—For further information see Medical Directory, page 2033. Terms moderate. Apply to Dr. J. D. THOMAS, Resident Physician and Licensee, for full particulars.

## THE ROYAL EARLSWOOD INSTITUTION FOR MENTAL DEFECTIVES.

(Formerly the EARLSWOOD ASYLUM.)

REDHILL, SURREY.

FOR THOSE REQUIRING CONTROL with EXPERT SUPERVISION, and needing SPECIAL TRAINING in useful occupations. SCHOOLS, FARMING, and various TRADE WORKSHOPS.

RECREATIONS: ALL outdoor games, EXCELLENT BAND by Male Staff, for Concerts, Dancing, &c.

Apply: THE MEDICAL SUPERINTENDENT, Earlswood, Redhill, Surrey, or to the Secretary, Mr. HARRY HOWARD, 14-16, Ludgate Hill, London, E.C. 4. Telephone: Redhill 344. Telephone: City 5297.

E. C. P. HULL, Esq., J.P., Treasurer. TO PAY admitted by votes of Subscribers, with part-payment towards cost.

## CAMBERWELL HOUSE, 33, PECKHAM ROAD, S.E.

Telegrams: "Psycholla, London."

Telephone: New Cross 1037.

For the Treatment of Mental Disorders.

Completely detached villas for mild cases. Voluntary Boarders received. 20 acres of grounds. Cricket, tennis, croquet, squash racquets, bowls, and all indoor amusements. Senior Physician: FRANCIS H. EDWARDS, M.D., M.R.C.P. An Illustrated Prospectus, giving full Particulars and Terms, may be obtained on application to the SECRETARY.

HOVE VILLA, BRIGHTON.—A Convalescent Branch of the above.

## SHAFTESBURY HOUSE,

FORMBY-BY-THE-SEA, LANCASHIRE.

For the CARE and TREATMENT of Ladies and Gentlemen MENTALLY AFFLICTED, with or without certificates. Consultations at 31, Rodney Street, Liverpool, every Monday and Thursday afternoons by appointment. For terms apply MEDICAL SUPERINTENDENT. Tel. No. 8 Formby.

## THE COPPICE, NOTTINGHAM.

HOSPITAL FOR MENTAL DISEASES.

President: The Right Hon. the EARL MANVERS.

This Institution is exclusively for the reception of a limited number of Private Patients of both sexes, of the Upper and Middle Classes, at moderate rates of payment. It is beautifully situated in its own grounds on an eminence a short distance from Nottingham, and from its singularly healthy position and comfortable arrangements, affords every facility for the relief and cure of those mentally afflicted. For terms, &c., apply to the Medical Superintendent.

## Glendossil and Hurst Houses.

—Considerable Improvements have recently been made in both these Houses. They are in every way adapted for the care and treatment of the mentally afflicted of the upper and middle classes.—Apply, S. H. AGAR, Henley-in-Arden, Medical Superintendent.

## MALLING PLACE, KENT.

BEAUTIFUL SEVENOAKS DISTRICT. Easy from town or Coast. Both sexes, mentally unsound, received under perfect condition of treatment. Tel. and Teleg.: Adam, 2, Malling; London, 26, Harley Street.

## HOME FOR CHRONICS AND MATERNITY CASES

From £5 5s. per week and upwards. Nurses supplied at shortest notice to any part. Telephone: Otley 67.—Apply, MATRON, WHEARFARDE NURSING AND NURSES' HOME, Leeds Road, Otley, Yorks.



# PALACE HOTEL, MONTANA,

Accommodation for 150 Patients.



Sur Sierre, SWITZERLAND.

## TUBERCULOSIS CURE STATION.

*The Finest in Europe.*

**5,000 FEET HIGH.**

Principal Resident Medical Officer:

BERNARD HUDSON, M.D.(Cantab.), M.R.C.P.,

*Late Physician to the Queen Alexandra Sanatorium, Davos Platz.*

Full particulars from the Secretary, 5, Endsleigh Gardens, London, N.W. 1.

## HEIGHAM HALL, NORWICH.

A Private Hospital for Cure of Ladies and Gentlemen suffering from Nervous and Mental Diseases. Boarders received without certificate. 4 to 25 gns. weekly. See Advt. Med. Directory, p. 2070. Prop. and Resident Physician J. G. GORDON MUX, M.D., F.R.S.E. Telephone 80 Norwich.

## HOME FOR FEEBLE-MINDED,

### BRUNTON HOUSE, LANCASTER.

There are now a few vacancies in this well-appointed private establishment. It is easily accessible from Lancaster, overlooks Morecambe Bay, and possesses extensive gardens and grounds, with tennis and croquet lawns. Varied scholastic and manual instruction. Individual attention is given to pupils by experienced staff under a Resident Physician and Lady Matron. Terms on application to—  
Dr. W. H. COUPLAND.

## DROITWICH BRINE BATHS.

### WARNING.

The Public are warned that the full benefits of the treatment for Rheumatism and kindred complaints CAN ONLY BE OBTAINED IN THE NATURAL BRINE BATHS AT DROITWICH, FOR WHICH THERE IS NO SUBSTITUTE. Nauheim Baths on the most approved principles. Aeration Baths (the most recent adaptation of the celebrated French Whirlpool System). Lovely Holiday District. Good Hotels, &c.

Illustrated Booklet post free from  
J. H. HOLLYER,  
11, Corbett Estate Offices, Droitwich (Worce.),  
SPECIAL FACILITIES TO MEDICAL MEN.

## DUFF HOUSE, BANFF, SCOTLAND.

TREATMENT OF DISORDERS  
OF THE STOMACH AND  
INTESTINES, INCLUDING  
TROPICAL DISEASES; DIABETES

and other complaints which need skilled chemical bacteriological and protozoological investigation and dietetic treatment.

The House is fitted with laboratories, X-Ray Installation, Medical Baths, Central Heating, and Lifts.

The climate is mild, and the rainfall the lowest in Scotland.

Apply, THE SECRETARY, Duff House, Banff.



## CATERHAM SANITARIUM

Battle Creek System. All Baths, Massage, and Electricity. Bergonié Chair and Diathermy. Telephone 88. L.A. "Hydro," Caterham. Medical Superintendent: Dr. F. C. SHONE.

## BOURNEMOUTH HYDRO.

With finest Sun-lounges and Marine Balcony on the South Coast.

Every kind of Bath.  
Every kind of Massage.  
Every kind of Electricity.  
Every kind of Diet.  
Carlsbad and Vichy Waters, &c.  
High Frequency. Electric Lift.

Prospectus from Secretary. Telephone 311.  
Resident Physician:—W. JOHNSON SMYTH, M.D.

## SMEDLEY'S HYDRO, MATLOCK.

[Established 1853]

LARGEST AND MOST COMPLETE.

Resident Physicians: { G. C. R. HARRISON, M.B., B.Ch., B.A.O.(R.U.L.)  
{ R. MACLELLAND, M.D., C.M.(Edin.)

Unrivalled suites of Baths for Ladies and for Gentlemen, including Turkish and Russian Baths, Aix and Vichy Douches, Massage and Weir Mitchell treatment, an Electric Installation for Baths and Medical purposes, Dowsing Radiant Heat, D'Arsonval High Frequency, Roentgen X-Rays Fango Mud, Nauheim Baths, etc. Special provision for Invalids. Milk from own farm. Large Winter Garden. Night attendance. Rooms well ventilated and all bedrooms warmed in Winter. A large Staff (upwards of 60) of trained Male and Female Nurses, Masseurs, and Attendants.

Prospectus and full information on application to H. CHALLAND, Managing Director.  
Telegrams—"SMEDLEY'S, MATLOCK." Telephone—No. 17.

## EPILEPSY.

### THE DAVID LEWIS COLONY

stands in its own grounds of 180 acres, and is situated in a beautiful part of Cheshire, 2½ miles from Alderley Edge Station, and 14 miles from Manchester. Electric light throughout. The Colony system ensures the social life and employment most suitable for those who suffer from Epilepsy. Patients certifiable under the Lunacy or Mental Defective Acts are *not eligible* for admission. Two Resident Physicians. Terms for middle and upper class patients from 38/- a week upwards, according to accommodation and requirements. Private rooms can be provided.—For further information apply to the Director, Dr. ALAN McDOUGALL, Warford, near Alderley Edge, Cheshire.

## EPILEPSY.

### COLTHURST HOUSE SCHOOL, Warford, Alderley Edge.

(Under the Management of the Committee of the David Lewis Colony.)

Home life; Medical care; School Education most suitable for Boys subject to Epilepsy. Terms 38/- weekly.—Further particulars may be obtained from Dr. ALAN McDOUGALL, The Colony, Warford, Alderley Edge.

## Medical man receives one

good-class RESIDENT PATIENT (nervous, borderland, or mental). Having had experience in Institution work and with private patients, a certified or uncertified case received. Every comfort and the interests of home life. Well-appointed country house (billiard room), and farm land. Carriage riding, motoring, golf, &c.—Dr. DUFF, Collington Rise, Bexhill-on-Sea, Sussex. Phone: 11 Gooden.

## GRAMPIAN SANATORIUM

KINGUSSIE, INVERNESS-SHIRE.

Specially built for the Open-Air Treatment of Tuberculosis, and opened in 1901. Bracing mountain air. Elevation 860 feet above sea-level. Sheltered situation in pine wood. Graduated walks. Electric light throughout building and in shelters. Inoculation Treatment available for patients—18 beds.

For further particulars apply to the Medical Superintendent, Grampian Sanatorium, Kingussie.

## PENDYFFRYN HALL SANATORIUM

(NORDRACH-IN-WALES.)

FOR THE OPEN-AIR AND INOCULATION TREATMENT OF ALL FORMS OF TUBERCULOSIS.

One of the first Sanatoria opened in the United Kingdom to carry out the Treatment as practised at Nordrach. Carefully graduated walks rise through pines, gorse and heather, to a height of over 1,000 feet above sea level, commanding extensive views of both sea and mountains sheltered from E. and N.W. winds. Climate mild and bracing. Small rainfall. Large average of sunshine. There are over five miles of walks in the private grounds. Rooms heated by hot-water radiators and lit by electric light. Sister and Nurse on duty all day. Trained Nurse on duty all night.

Telegrams: Pendyffryn; and Telephone: No. 20 Penmaenmawr.

For particulars apply to: Dr. J. M. GERATY, Medical Superintendent, Pendyffryn Hall, Penmaenmawr, North Wales.

## MENDIP HILLS SANATORIUM, FOR THE OPEN-AIR TREATMENT.

Specially built, facing South. 500 acres of sanatorium grounds—meadow and woodland; sheltered pine avenues. Altitude 800 feet, magnificent view for miles South; hot-water radiators and electric light. Special features are breathing, singing, and graduated exercises, walking and tramping; continuous inoculation; decided success; electric treatment. Individual attention. Resident Physician—C. MURRU, M.D., M.R.C.S., L.R.C.P.

Terms: 4 Guineas weekly.

For particulars, apply, SECRETARY, Hillgrove, Wells, Somerset.

# TOR-NA-DEE SANATORIUM, DEESIDE, MURTLE, SCOTLAND,

Situated on gravel soil. High average sunshine during winter months combined with low rain fall.

60 Beds

Terms :

£5 5/- Weekly

For the Sanatorium Treatment  
of Pulmonary Tuberculosis and  
Allied Diseases.

Medical Director - - - - DAVID LAWSON, M.D., F.R.S.Ed.

Senior Physician - - - - IAN STRUTHERS STEWART, M.D.Ed.

(Formerly Senior Assistant Physician at the Banchory Sanatorium)

Assistant Physician - - - - I. M. JOHNSTON, M.B.Ed., D.P.H.

Matron and staff of fully qualified nurses in residence.

Officers recommended by the Scottish Branch of the British Red Cross Society obtain priority in regard to admission. This Branch of the Society is prepared to contribute £1 11s. 6d. per week towards paying the fees of Officers whose admission meets with their approval.

Apply—DR. STRUTHERS STEWART, Murtle, Deeside, Scotland.

RESEARCH LABORATORY

THROAT ROOM

X-RAY INSTALLATION

OPERATING THEATRE

## LONDON HOSPITAL MEDICAL COLLEGE

(UNIVERSITY OF LONDON).

A COURSE OF INSTRUCTION

ON

## THE DISEASES OF CHILDREN

WILL COMMENCE ON

Saturday, January 10th, 1920,

AND WILL BE HELD BY

ROBERT HUTCHISON, M.D., F.R.C.P., Physician to the London Hospital.

THEODORE THOMPSON, M.D., F.R.C.P., Physician to the London Hospital.

CHARLES H. MILLER, C.B.E., M.D., F.R.C.P., Assistant Physician to the London Hospital.

| Subject  | Lecturer or Demonstrator | Day and Hour            | Place                              |
|--|--------------------------|-------------------------|------------------------------------|
| A Course of 10 Lectures on General Diseases.   | Dr. HUTCHISON            | Saturdays at 10.15 a.m. | Anatomical Theatre.                |
| A Course of 8 Lectures on Organic and Functional Nervous Diseases, Meningitis and Mental Deficiency. | Dr. THOMPSON             | Mondays at 9.15 a.m.    | Anatomical Theatre.                |
| A Course of Clinical Demonstrations.   | Dr. MILLER               | Wednesdays at 10 a.m.   | Childrens' Out-patient Department. |

The Lectures will be illustrated by Lantern Slides.

The above Course will be open to Post-Graduates and to Students of the Hospital.

Professor WILLIAM WRIGHT, M.B., D.Sc., F.R.C.S., Dean.

London Hospital Medical College, Mile End, E. 1.

## GUY'S HOSPITAL MEDICAL SCHOOL

(UNIVERSITY OF LONDON).

PRIMARY F.R.C.S. EXAMINATION, MAY, 1920.

Special Classes for this Examination will commence in the first week of February, 1920, and will continue for thirteen weeks, during which time Anatomy and Physiology will be taken four times weekly.

ANATOMY - - - Prof. T. B. JOHNSTON, M.B.  
PHYSIOLOGY - - M. S. PEMBREY, M.D.

Gentlemen taking this Course will have the right of admission to the Gordon Museum, Will's Library, and the Rooms and Specimens in the Anatomical and Physiological Departments.

For time-table and full particulars, application should be made to the DEAN, Guy's Hospital, S.E.1.

## LONDON HOSPITAL MEDICAL COLLEGE.

F.R.C.S. EXAMINATIONS.

SPECIAL COURSES will commence as follows:—

Course for Primary Examination, Feb. 2nd, 1920.

" " Final " March 1st, 1920.

Full particulars may be obtained from the Dean, Professor WILLIAM WRIGHT, M.B., D.Sc., F.R.C.S., Mile End, E. 1.

## BAR EXAMINATIONS.

A Barrister prepares Candidates through the Post; or Orally, if desired. Attendance at Lectures unnecessary. — Address by letter to, No. 6650, BRITISH MEDICAL JOURNAL Office, 429, Strand, W.C.2.

## F.R.C.S. Edin.

The TUTORIAL CLASS for the next Examination will commence shortly. Correspondence Tuition if desired. — For particulars apply FRED. GRAHAM, M.D., F.R.C.S. Ed., 16, Mayfield Gardens, Edinburgh.

## LONDON SCHOOL OF TROPICAL MEDICINE

The present Session of the School commenced on 1st October, 1919.

In 1920 sessions will be held commencing January 18th, May 3rd and October 4th respectively.

For prospectus and further particulars, apply to: The Director (Dr. H. B. NEWHAM, C.M.G.), London School of Tropical Medicine, Connaught Road, Albert Docks, London, E. 18, or to the Secretary, Seamen's Hospital, Greenwich, London, S.E.

## CHESHIRE.

## MARLBOROUGH COLLEGE,

(formerly Buxton).

Tytherington Hall, nr. Macclesfield.

Magnificent Modern Mansion. Park 70 acres. Lovely locality. Altitude 500 feet. Sound education. Individual attention.

Centre for Oxford Local Examinations.

FACULTY OF MEDICINE. — Training for Entrance.

Full information from Principal—

Miss ASHMALL-SALT.

N.B.—Special Terms to Medical Men.

## F.R.C.S. (Edin.)

A TUTORIAL CLASS for the next Examination commences shortly.

Particulars from CHAS. R. WHITTAKER, F.R.C.S., Anatomical Department, Surgeons' Hall, Edinburgh.

## WHY WORRY SEEKING A SCHOOL?

Mrs. POYNTON (Principal) BRITISH AND FOREIGN SCHOOLS AGENCY, 62, King Street, Manchester, personally recommends British and Continental Schools for girls and boys (including commercial).—Inquirers please give requirements fully. Telephone: 5458 City.

## CENTRAL LONDON OPHTHALMIC HOSPITAL,

Judd Street, St. Pancras, W.C. 1.

CLASSES OF INSTRUCTION on the following subjects will be held during the Winter Session, commencing Jan. 6th, and are open to both men and women Students. Those wishing to attend are requested to send in their names to the Dean:—

- (1) The use of the Ophthalmoscope.
- (2) Errors of Refraction.
- (3) Medical Ophthalmology.
- (4) Operative Surgery and Surgical Anatomy, Fee £3 3s.
- (5) Pathology of the Eye.
- (6) Bacteriology of the Eye.
- (7) X-Ray Instruction. Fee £3 3s.
- (8) Clinical Lectures on External Diseases of the Eye.

The post of Clinical Assistant at the Hospital is open to men and women Students. In 1918: New Patient, 12,821; Out-Patients' Attendance, 30,256.

A composition fee of £6 6s. entitles Students to a perpetual ticket, and £4 4s. to three months' Hospital practice. Either fee will admit Students to the above Classes and Demonstrations on the use of the Ophthalmoscope, Errors of Refraction, and External Diseases of the Eye. Any single Class can be taken for a fee of £2 2s. with the exception of the X-Ray and Operative Surgery Classes.

The Classes will be given by various members of the Staff, and are limited to a certain number of Students. Early application is therefore desirable. For Syllabus and further particulars apply to the DEAN of the School.

## DIPLOMA IN PUBLIC HEALTH.

## THE ROYAL INSTITUTE OF PUBLIC HEALTH

Patron: HIS MOST EXCELLENT MAJESTY KING GEORGE V.

Vice-Patron: H.R.H. THE PRINCE OF WALES.

Chairman of Council: Professor Sir THOMAS

OLIVER, M.D., LL.D., F.R.C.P., F.R.S. Edin.

Principal: Professor Sir WILLIAM SMITH, M.D.,

D.Sc., LL.D., F.R.S. Edin.

The Course of Instruction for the Degrees and Diplomas in Public Health, with the necessary Laboratory work, can commence at any time, and special arrangements are made to suit the convenience of those (Men and Women) holding appointments, etc.

The Principal will be pleased to interview intending Candidates for the purposes of advice.

## TUBERCULOSIS.

A Course of Lectures for Tuberculosis Officers, General Practitioners and others will commence on Thursday, January 15th, at 5 p.m.

Further particulars can be obtained from the Secretary, 37, Russell Square, W.C. 1.

## Queen Charlotte's Lying-in HOSPITAL and MIDWIFERY TRAINING SCHOOL, Marylebone, N.W.

Medical Pupils admitted to the Practice of this Hospital. Unusual opportunities are afforded of seeing obstetrical complications and operative midwifery, about one-half the total admissions being primiparous ones. Certificates awarded as required by the various Examining Bodies.

Pupils trained for Midwives and Monthly Nurses. On being found competent, each pupil is awarded a Certificate of efficiency. Special preparation for examination for Central Midwives' Board. For rules, fees, &c., apply to

ARTHUR WATTS, Secretary.

# EPSOM COLLEGE

**Established in 1855 as a Public School with a Royal Medical Foundation.**

**Patron**—HIS MOST GRACIOUS MAJESTY THE KING.

**President**—THE RIGHT HON. THE EARL OF ROSEBURY, K.G.

**Treasurer**—SIR HENRY MORRIS, Bart., F.R.C.S., M.A., M.B.

## EPSOM COLLEGE.

**Head Master**—REV. WALTER JOHN BARTON, M.A.,

late Scholar of New College, Oxford; formerly Assistant Master at Winchester College.

EPSOM COLLEGE, founded by the late Mr. JOHN PROPERT in 1853, and opened in 1855, is situated 15 miles from Charing Cross in a most healthy and picturesque position, high up on the Epsom Downs, where the air is very dry and bracing. The College stands in its own estate, consisting of over 80 acres. In front of the main buildings are large ornamental grounds, in which the Chapel forms a conspicuous feature, and there are, beyond, large playing fields of over 26 acres, well adapted for cricket, football, and all other games. There are also several good fives courts.

The closest attention is paid to the sanitary arrangements at the College, which are under the supervision of a permanent Sanitary Inspector. The water is drawn from a well on the premises sunk in the chalk, and analysis shows it to be of the greatest purity.

The College can accommodate 300 Resident Pupils, 50 of whom are the Foundation Scholars. The School is not exclusively for the sons of Medical men; boys belonging to other professional and to the higher commercial classes are also educated here. A certain number of Day boys are admitted.

The Lower School, which is preparatory to the College, is a large building, distinct from the College but within the College grounds. Here, all junior boys, from 8 years of age, whether ordinary boarders, Foundation Scholars, or Day boys, form a separate department from the main body of the school, both for work and games.

Particular attention is paid to the teaching of Natural Science, for which there are admirably equipped Laboratories and two Lecture Theatres.

Epsom College is on the list of Recognised Institutions approved of by the General Council of Medical Education and Registration of the United Kingdom as places at which medical study may be commenced; and the College is recognised as a "School of Science" by the Committee of the Conjoint Board of the two Royal Colleges of Physicians and Surgeons. Special instruction is given for the First Examination for Medical Degrees of the University of London, and for the Matriculation Examination of the same University. Boys are also prepared for the Army, Navy, Civil Service, and for other careers.

Five Medical Scholarships, differing in value, at the Hospital Schools in London, and twenty-two Scholarships, ranging in value from £25 to £100, are awarded under varying conditions—some of them annually and most of them tenable for several years. Besides these there are four Entrance Salomons Scholarships of £50 a year each; and there are awarded annually "Hugh Vardon" Scholarships of £21 each, Junior Scholarships of £30 each, and Lower School Scholarships of £15 each. School lists, giving full information as to Scholarships, &c., with prospectuses and forms of application, may be obtained on application to the Bursar, at No. 3, The College, Epsom.

**ANNUAL FEES.**—Sons of medical men, 70 guineas. Those who are not the sons of medical men, 80 guineas. Day Scholars, 25 guineas. Fees are charged for special subjects, as in other schools.

W. DOUGLAS CROSSLEY, Bursar.

## ROYAL MEDICAL FOUNDATION OF EPSOM COLLEGE.

The Royal Medical Foundation attached to Epsom College gives pensions of £30 each to fifty aged members, or widows of members, of the medical profession in reduced circumstances, and provides gratuitously an education of the highest class at Epsom College, together with clothing, maintenance, and pocket money, for fifty necessitous sons of medical men. It is impossible to maintain this number of Pensioners and Foundation Scholars unless a sum of at least £4,500 is obtained by annual contributions.

Did the financial position of the Foundation permit, the Council would be only too glad to increase the total number both of Pensioners and Foundation Scholars, as the applicants very far exceed the number the Foundation is able to help. Many cases of the most heartrending nature, in which immediate aid is sorely needed, have to stand over for a year or two, and some fail altogether to get elected.

Nor must it be overlooked that an increased number of applications for Pensionerships and Foundation Scholarships will be received as a result of the War. Already the Governors have elected as Foundation Scholars the son of a medical officer in the Royal Navy who was killed in action on board H.M.S. "Good Hope," in 1914, and the son of another medical officer who was killed in action in 1917. Furthermore, Salomons Entrance Scholarships of £50 a year have been awarded by the Council to the son of a medical officer in the Royal Army Medical Corps, who was lost in the "Royal Edward," when she was torpedoed in August, 1915, to the son of a medical officer who lost his life when the "Arcadian" was torpedoed in 1917, and to the son of a medical officer who was killed in action in 1918.

Unfortunately a very large number of annual subscriptions have been withdrawn since the outbreak of War. If the work of the Foundation is to be maintained undiminished, it is essential that new subscribers should be secured to make good the losses sustained.

If all friends of the College would take such opportunities as they have of pleading the cause of this Medical Foundation with their well-to-do relatives and friends, the Council would be safeguarded in their efforts to make provision for the wants of those who are forced to appeal for help.

The Pensioners and the Foundation Scholars are elected in June by the votes of the Governors.

Donors of Ten Guineas and collectors of Twenty Guineas are Life Governors, and subscribers of One Guinea annually are Governors during the continuance of their subscriptions. Small contributions are gladly received.

Contributions will be received by the Treasurer, SIR HENRY MORRIS, Bart., 8, Cavendish Square, London, W. 1; by the BRITISH MEDICAL ASSOCIATION, 429, Strand, London, W.C. 2; by BARCLAY'S BANK, Ltd., 19, Fleet Street, London, E.C. 4, and by the Secretary, at the Office of the College, 37, Soho Square, London, W. 1.

J. BERNARD LAMB, Secretary.

OFFICE: 37, SOHO SQUARE, LONDON, W. 1. December 17th, 1919.

## UNIVERSITY EXAMINATION POSTAL INSTITUTION.

17, RED LION SQUARE, LONDON, W.C. 1

Principal: Mr. E. S. WEYMOUTH, M.A. (Lond.)

POSTAL OR ORAL PREPARATION FOR ALL MEDICAL EXAMINATIONS. SOME RECENT SUCCESSES.

**M.D. (Lond.),** 1901-19; (6 Gold Medalists during 1918-18) **238**

**M.S. (Lond.),** 1902-19 (including 3 Gold Medalists) **17**

**M.B., B.S. (Lond.),** Final 1906-19 (Besides 29 who tried part only) **100**

**Primary F.R.C.S. (Eng.),** '06-19 **57**

**Final F.R.C.S. (Eng.),** 1906-19 (Including 5, May 1914, Exam) **32**

**M.R.C.P. (Lond.),** 1914-19 **28**

**D.P.H.,** (Various) 1906-19 **148**

**F.R.C.S. (Edin.),** 1906-19 (6 out of 7 successful in 1918) **21**

**M.R.C.S., L.R.C.P.,** Final 1906-19 (Besides 18 who tried part only) **119**

**M.D. (Durh.),** (Practitioners) '06-19 **25**

**M.D. (Various),** By Thesis. Legitimate assistance. Moderate fees. Numerous successes. 5 successful Edin. M.D., July, 1913, including 3 "commended."

Also **M.B. (Cantab., &c.)** **L.M.S.S.A.,** Triple Qualification, &c. Medical Prospectus and General Prospectus with names of Tutors, on application.

**MEDICAL PRELIMINARY ARTS AND SCIENCE (POSTAL OR ORAL).**

Apply to the Principal of the Institution, Mr. E. S. WEYMOUTH, M.A., 17, Red Lion Square, W.C. 1.

## DIPLOMA IN PUBLIC HEALTH. UNIVERSITY OF CAMBRIDGE.

LECTURES AND PRACTICAL INSTRUCTION in the subjects of the Examination will begin 16th JANUARY, and 23rd APRIL, 1920, at the UNIVERSITY LABORATORIES, PEMBROKE STREET, CAMBRIDGE.

*Hygiene, Chemistry, and Physics:* Mr. J. B. PURVIS.

*Bacteriology and Preventive Medicine:* Dr. GRAHAM-SMITH.—Special Lectures by Professor NUTTALL, on Protozoal Diseases, and by Dr. SHIPLEY, on Animal Parasites.

*Practical Sanitary Administration, Hospital Administration, School Hygiene, Sanitary Law, &c.:* Dr. LAIRD, M.O.H. for Cambridge, and Dr. ROBINSON, M.O.H. for the Cambridgeshire County Council.

Further particulars may be obtained from Mr. J. B. PURVIS, Chemical Laboratory, Pembroke Street, Cambridge.

## SCHOOLS for BOYS and GIRLS, TUTORS for ARMY, and ALL EXAMS.

Messrs. J. & J. PATON, having an intimate, unique, and up-to-date knowledge of the BEST SCHOOLS and TUTORS in this country, will be pleased to AID PARENTS in their choice by sending (free of charge) prospectuses and TRUSTWORTHY INFORMATION regarding ESTABLISHMENTS which can be THOROUGHLY RECOMMENDED.

The age of the pupil, district preferred, and rough idea of fees should be given. Phone, write, or call. J. & J. PATON, Educational Agents, 143, Cannon Street, London, E.C. 4. Telephone 5053 Central.

## University of Birmingham.

### FACULTY OF MEDICINE.

A Post-graduate Course of Lectures and Clinical Demonstrations on

#### VENEREAL DISEASE

will be given in the University, Edmund Street, during the Spring Term, 1920.

Admission to the Lectures will be free, but a fee will be charged for attendance at the Clinical Demonstrations.

A Syllabus of the Course, together with all details, will be supplied on application to the Dean. The Lectures and Demonstrations are open only to Members of the Medical Profession.

WILLIAM F. HASLAM, F.R.C.S., Dean.

## VALUABLE BOOK FREE!

Are you preparing for any Medical or Surgical Examination?

Send Coupon below for our valuable publication

### "Guide to Medical Examinations."

#### PRINCIPAL CONTENTS

The Examinations of the Con-joint Board.  
The M.B. and M.D. Degrees of all British Universities.  
How to pass the F.R.C.S. Exam.  
The M.S. (Lond.) and other Higher Surgical Examinations.  
The M.R.C.P.  
The D.P.H. and how to obtain it.  
The Diploma in Tropical Medicine

Do not fail to get a copy of this Book before commencing preparation for any Examination. It contains a large amount of valuable information.

Send for your Copy now!

Examination in which interested

The Secretary.  
MEDICAL CORRESPONDENCE COLLEGE,  
3, Wimpole Street,  
Cavendish Square,  
London, W.1

Sir,—Please send me a copy of your "Guide to Medical Examinations" by return.

Name.....

Address.....

## DIPLOMA IN PUBLIC HEALTH. UNIVERSITY OF LONDON, UNIVERSITY COLLEGE

Professor—HENRY R. KENWOOD, M.B., D.P.H., C.M.G., F.R.S.E., Medical Officer of Health and Public Analyst for the Borough of Stoke Newington, Medical Officer of Health and Education, Bedfordshire County Council, etc.  
Lecturer on Diseases Common to Man and the Lower Animals—A. G. R. FOULETTON, F.R.C.S., D.P.H., Assistant and Lecturer—M. E. DELAFIELD, D.P.H., M.B., M.R.C.S., L.R.C.P.

The Laboratories are open daily from 10 to 5 (Saturdays 10 to 1) for Practical Instruction and Research.

The next Course begins early in January, 1920.

Demonstrations of Sanitary Appliances and Excursions to places of Public Health interest are undertaken.

Arrangements are made to suit the convenience of those engaged in practice.

A Special Course of Bacteriological Instruction is arranged for D.P.H. Candidates.

Particulars may be obtained on application to WALTER W. SETON, M.A., D.Lit., Secretary, University College, London (Gower Street), W.C. 1.

## POST - GRADUATE COLLEGE, West London Hospital, Hammersmith, W. 6.

The Hospital Practice is reserved exclusively for Post-graduates, and a Reading and Writing Room is provided for them. Prospectus from the DEANS.

## Society for Relief of Widows AND ORPHANS OF MEDICAL MEN.

A Quarterly Court of the Directors of the above Society will be held at 11, Chandos Street, Cavendish Square, W. 1, on Wednesday, January 7th, at 5.30 p.m., to elect members and conduct the usual business.

EDWARD J. BLACKETT,

11, Chandos Street, W. 1,  
27th December, 1919.

Secretary.

## RADIOLOGY.

Lectures, Clinic, Instruction. Advice to Hospitals.—Apply, Dr. ROWDEN, 7, Park Square, Leeds.

## Edinburgh Post-Graduate COURSES IN MEDICINE. (IN CONNECTION WITH THE UNIVERSITY AND ROYAL COLLEGES.)

Post-Graduate Courses in CLINICAL MEDICINE and in CLINICAL SURGERY, designed to meet the requirements of Graduates returning from active service on demobilisation, will be conducted during the AUTUMN TERM, 1919, commencing 14th October, and SPRING TERM, 1920, commencing 7th January, and during each subsequent academic term.

Each Course will extend throughout the term, and the work, which will be essentially practical, will occupy the whole time of members.

A Course on OBSTETRICS, GYNÆCOLOGY and CHILD WELFARE, on similar lines, will be held during the months of August and September, 1920.

The Courses are open to Women Graduates.

Particulars may be had on application to The SECRETARY, Edinburgh Post-Graduate Courses, University New Buildings, Edinburgh.

### PROFESSOR OF ANATOMY, MEDICAL DEPARTMENT.

## Straits Settlements,

The Government of the Straits Settlements requires the services of a Professor of Anatomy, for the Medical Department of the Straits Settlements. The salary of the post is 600 dols. a month (£840 per annum at the present rate of exchange). No quarters are provided, and no private practice, either general or consultant, is allowed.

The appointment is on agreement for 3 years, and the officer selected will be required to devote his whole time to the service of the Singapore Medical School, and to act directly under the orders of the Principal of the School. He will be responsible for the theoretical and practical teaching of anatomy and osteology, and for the supervision of the anatomical department, and will be required to assist the Principal from time to time in the routine administration of the School.

Candidates must be fully qualified and registered medical practitioners, and must have had experience in the teaching and demonstration of anatomy. Preference will be given to a man who has held a demonstratorship at some well-known British School of Medicine, and whose interests are anatomical rather than surgical, i.e. he should be a man who has specialised definitely in anatomy, without ultimate surgical ambitions.

The officer selected will be provided with free passages out and home (2nd class by mail or 1st class by other steamer), and will receive half salary from the date of embarkation on this country.

Applications for the post should be addressed to the Secretary for Appointments, Colonial Office, S.W. 1.

(D.P.H. Dublin).

COACHING CLASSES; Theoretical and Practical Work and Correspondence Classes.—Apply, "Graduate," 33, York St. (next door R.C.S.I.), Dublin

## University of Birmingham

### FACULTY OF MEDICINE. LECTURER IN BACTERIOLOGY.

Applications are invited for the post of Lecturer in Bacteriology at a Stipend of £450 per annum.

It is anticipated that the successful candidate may also be appointed to the post of Bacteriologist to the Queen's Hospital at a Stipend of £100 p.a.

Applications, with three testimonials, should be sent on or before January 10th to the undersigned, from whom further particulars may be obtained.

GEO. H. MORLEY, Secretary.

## University of Glasgow.

### FACULTY OF MEDICINE.

The University Court, in pursuance of the notices previously issued, hereby intimates that all applicants for permission to commence the Study of Medicine on 21st April, 1920, must lodge their applications before 21st February, 1920. Forms of application may now be obtained from the Registrar.

DONALD MACALISTER,

December, 1919.

Principal.

## Liverpool School of Tropical MEDICINE.

The next COURSE OF INSTRUCTION will be conducted in the New Laboratories of the School, and will commence on MONDAY, 12th JANUARY, 1920. The date of the D.T.M. Examination is March 29th, 1920.—Apply to the SECRETARY, School of Tropical Medicine, University of Liverpool.

## University of Liverpool.

### GRADE I. LECTURER IN PHARMACOLOGY.

The Council invite applications for this post. Salary £500 per annum, without share of fees. Full particulars may be obtained from the REGISTRAR to whom application must be made, on or before January 31st, 1920.

## Royal College of Physicians OF LONDON.

The next PROFESSIONAL EXAMINATION for the MEMBERSHIP will commence on Tuesday, January 20th.

Candidates are required to give 14 days' notice in writing to the Registrar of the College, with whom all certificates and testimonials required by the By-laws are to be left at the same time.

J. A. ORMEROD, M.D.,  
Registrar.  
Pall Mall East, S.W.

## Salford Royal Hospital and ANCOATS HOSPITAL, Manchester.

A series of POST-GRADUATE demonstrations and LECTURES will be given on Thursday afternoons at 4.30 p.m., alternately at the two Hospitals above-named. The subjects of the lectures will be announced week by week in the journals. Tea will be provided at 4.0 p.m. First lecture January 15.

## Devonshire Hospital, Buxton, Derbyshire (316 Beds).

ASSISTANT HOUSE PHYSICIAN.

The Committee invite applications for this post. To commence duty January 2nd, 1920. Salary £120 per annum, with furnished apartments, board (excepting stimulants), and laundry. Applications of Senior Students will be considered. Applications, with copies of three recent testimonials, endorsed "Assistant House Physician," to be sent in at once. The Medical Staff consists of five Honorary Physicians, three Honorary Assistant Physicians, a Pathologist and Bacteriologist, and two Resident House Physicians. The Hospital contains a Pathological Laboratory and X-ray Department.

By Order,  
TOM B. HARRISON,  
General Superintendent and Secretary,  
December 4th, 1919.

## Stockport Education COMMITTEE.

FULL-TIME DENTIST.

The Committee invite applications from qualified Dentists for the post of Full-time Dentist, to act under the supervision of the School Medical Officer, in connection with the treatment of the Dental defects of school children, and to undertake such duties as may from time to time be required by the Committee. The successful candidate will be required to devote his whole time to the duties of the Office.

Applications, stating full particulars of qualifications, experience, salary required, etc., and accompanied by copies of three recent testimonials should be sent to the undersigned.

ARTHUR LAWTON, M.A.,  
Secretary to Education Committee.  
Town Hall, Stockport, 15th December, 1919.

## The Hospital for Women, Soho Square, W. 1.

A vacancy having occurred in the office of REGISTRAR, applications are hereby invited for the post. Candidates must be Graduates in Medicine of a recognised University. The appointment is for 12 months, and the holder is eligible for re-election for a period not exceeding three years. Honorarium £31 10s. per annum.

Applications and testimonials must be forwarded to the undersigned (from whom further information may be obtained) on or before Saturday, January 17th, 1920.

ALFRED HAYWARD, Secretary.

## The Royal Infirmary, Sunderland.

Wanted SENIOR HOUSE SURGEON, male (with previous hospital experience). Salary £250 per annum, with board, residence and laundry.

State age and qualifications, and submit copies of three testimonials by December 29th, to  
S. C. FRYERS, Secretary.

## Aberdeen Royal Infirmary.

There is a vacancy in this Hospital for an ASSISTANT PHYSICIAN. Applications and testimonials (12 copies of each) should be lodged with the subscriber not later than 10 a.m. on Friday, 9th January next.

A. SCOTT FINNIE,  
Clerk and Treasurer.  
343, Union Street,  
Aberdeen, 15th December, 1919.

## London Jewish Hospital, Stepney Green, E. 1.

A SECOND CASUALTY OFFICER required to attend on Monday and Tuesday afternoons from 1 to 3 p.m. Salary at the rate of £50 p.a. Applications, with testimonials, to be sent not later than December 31st to the Secretary, 512, Stepney Green.

## The King Edward VII. WELSH NATIONAL MEMORIAL ASSO- CIATION.

Applications, with copies of three recent testimonials, are invited for the following appointments:—

(a) ASSISTANT RESIDENT MEDICAL OFFICER at the SOUTH WALES SANATORIUM, Talgarth, Breconshire. (300 beds).

(b) ASSISTANT RESIDENT MEDICAL OFFICER at the NORTH WALES SANATORIUM, Llangwyfan, near Denbigh, North Wales. (220 beds).

At both Institutions cases of Pulmonary and Non-Pulmonary Tuberculosis are admitted.

Salary in each case, £300 per annum with maintenance.

Applications, stating full qualifications and experience, should reach me not later than January 7th, 1920.

Memorial Offices, F. J. ALBAN,  
Westgate Street, Cardiff. Secretary.

## The King Edward VII. WELSH NATIONAL MEMORIAL ASSO- CIATION.

APPOINTMENT OF TUBERCULOSIS SISTERS  
AND STAFF NURSES AT INSTITUTIONS.

Applications are invited for the appointment of Tuberculosis Sisters in the following areas under the Scheme of the Association:—

(a) Carmarthenshire and Anglesey, with headquarters at Bangor.

(b) Swansea and Gower, with headquarters at Swansea.

(c) County of Carmarthen, with headquarters at Carmarthen.

Applicants must be over 25 years of age, fully trained and certificated, and must be prepared to undergo medical examination as to their physical fitness. A knowledge of Welsh is desirable.

Salary £150 per annum with travelling expenses and certain subsistence allowances when away from centre.

Applications are also invited for appointments as Staff Nurses at the Hospitals and Sanatoria of the Association.

Commencing salary £40 per annum, rising by annual increments of £2 10/- to £50.

Applications, showing qualifications and experience, accompanied by copies of three recent testimonials, should reach me on or before January 7th, 1920.

Memorial Offices, F. J. ALBAN,  
Westgate Street, Cardiff. Secretary.

## Manchester Children's HOSPITAL (Out-Patients' Department), Gartside Street, Manchester.

Wanted for the period 1st March to 30th September, at the Out-Patients' Department, an ASSISTANT MEDICAL OFFICER, who must be doubly qualified and on the Medical Register. Salary at the rate of £200 per annum.

Applications, stating age, and accompanied by copies of not more than three testimonials to be sent to the undersigned not later than Friday, 9th January, 1920.

By order of the Board,  
W. M. HUMPHRY,  
Secretary.  
19th December, 1919.

## Italian Hospital.

Applications are invited for the post of HOUSE SURGEON from the 1st February next. Candidates must be doubly qualified and registered. The appointment will be for six months, renewable at the pleasure of the Committee of Management.

Salary £150 per annum, with board and residence. Applications with copies (only) of testimonials should be forwarded to the SECRETARY and CONTROLLER, Italian Hospital, Queen Square, W.C. 1, on or before Saturday, 10th January, 1920.

## Manchester Hospital for CONSUMPTION AND DISEASES OF THE THROAT AND CHEST.

Wanted an ASSISTANT MEDICAL OFFICER for the CROSSLEY SANATORIUM, Delamere Forest, Cheshire (100 beds). Salary £250 per annum, with board, apartments, and laundry.

Applications, with copies of testimonials, to be sent in not later than December 31st, to  
O. W. HUNT, Secretary.

Hardman Street, Deansgate, Manchester.

## Holloway Sanatorium (Hospital for the Insane), Virginia Water, Surrey.

JUNIOR ASSISTANT MEDICAL OFFICER (lady) for ladies' side required. Salary begins at £300 per annum, with board, lodging, laundry and attendance. Applications, stating age, etc., and accompanied by testimonials, to be sent not later than Wednesday, January 14th, 1920, to the Medical Superintendent.

## West Ham Union.

ASSISTANT MEDICAL OFFICER.

The Guardians invite applications for the appointment of a Resident Assistant Medical Officer at their Infirmary, Whipps Cross Road, Leytonstone, E. 11, at a salary of £300 per annum, rising by annual increments of £25 to a maximum of £350 per annum, with a war bonus of £30 per annum plus 10 per cent. of salary, and the usual residential allowances.

The Infirmary is situated on the borders of Epping Forest, the nearest Station being Wood Street, Walthamstow.

Candidates must possess qualifications both in Medicine and Surgery, and preference will be given to candidates having previous hospital experience.

Intending applicants should communicate in the first instance with the Medical Superintendent, who will furnish particulars as to duties, &c.

The successful candidate will be required, should occasion arise, to act in any other Institution under the control of the Board.

Applications to be made on forms which can be obtained at my office, or will be forwarded upon receipt of a stamped addressed foolscap envelope, and must be returned not later than 10 a.m. on Tuesday, the 6th January, 1920.

Canvassing the Guardians, either directly or indirectly, is prohibited and will disqualify.

By order of the Board,  
THOMAS SMITH, Clerk.

Board Room, Union Road, Leytonstone, E. 11.  
16th December, 1919.

## District Asylum, Ballinasloe.

MEDICAL OFFICER WANTED.

The Joint Committee of Management of above Asylum will, at their Meeting to be held on Monday, the 12th day of January, 1920, proceed to elect a SECOND ASSISTANT MEDICAL OFFICER at a salary of £225 per annum, with allowances of furnished apartments, washing, fuel, light, attendance, bread, milk and vegetables, valued at £48; also £52 in cash in lieu of other rations.

A contribution to the Asylum Officer's Superannuation Fund will be deducted from the salary, calculated at 3 per cent. on salary and value of allowances.

Applicants must furnish proof that they have been registered Medical Practitioners, and must not be more than 32 years of age.

The appointment will be made, subject to the Statutory concurrence of His Excellency the Lord Lieutenant, and shall be probationary for a period of 6 months, subject to one month's notice on either side.

Personal attendance of candidates on day of election is necessary.

Applications, accompanied by the necessary proofs and copies of testimonials, to be lodged before 1 o'clock p.m. on Saturday, 10th day of January, 1920, with the RESIDENT MEDICAL SUPERINTENDENT, from whom any further information may be obtained.

JOHN MILLS,

Resident Medical Superintendent.

By Order of the Committee.  
8th December, 1919.

## Leyton Urban District COUNCIL (EDUCATION COMMITTEE).

DENTAL CLINIC.

A Second SCHOOL DENTIST (man or woman) is required by the above-named Council, and applications for the post are invited from qualified and registered Dental Surgeons.

The selected Candidate will be required to devote his or her whole time to the service of the Council.

Commencing salary £200 per annum, plus present war bonus of £120, together £420, rising by two annual increments of £25 each to the maximum of the scale.

Applications, on form to be obtained from the undersigned, to be sent to me on before the 3rd January, 1920.

Education Department, E. VINCENT,  
Town Hall, Leyton, E. 10. Clerk.  
19th December, 1919.

## Bethlem.—Wanted Resident

HOUSE PHYSICIAN (gentleman, unmarried) recently qualified in Medicine and Surgery. The term of residence is for six months; apartments, complete board and laundry being provided, and an honorarium at the rate of £25 per quarter will be paid. He will be under the direction of the Physician-Superintendent, to whom he must present himself previous to the date of election.

Copies of the duties can be obtained from the undersigned, and applications, with testimonials, are to be forwarded to the Treasurer, Bridewell Hospital, New Bridge Street, E.C. 4, before January 3rd, endorsed "House Physician."

Candidates must attend at Bethlem Hospital on Wednesday, January 7th, at 11.30 a.m., when the Sub-Committee will make the appointment.

Bridewell Hospital, JOHN L. WORSFOLD,  
New Bridge Street, E.C. 4. Clerk, &c.  
December, 1919.



**Wanted.—A fully-qualified**  
in-door ASSISTANT for Colliery Practice in County Durham. The usual bond must be signed. Salary £360 per annum.—Address, No. 7715, BRITISH MEDICAL JOURNAL Office, 429, Strand, W.C. 2.

**Wanted, in or outdoor**  
ASSISTANTSHIP in Edinburgh, by M.B., 31, active, reliable. Ex-Capt. R.A.M.C. Knowledge of Tropical Diseases. Some experience in general practice. Time for reading required.—Address full particulars, No. 7722, BRITISH MEDICAL JOURNAL Office, 429, Strand, W.C. 2.

**Wanted an Assistantship by**  
M.D., &c. Ex-R.A.M.C. Married. Accustomed to general Practice. Good accoucheur. At liberty now. References.—Address, SMITH, Chemist, 134, Smeinton Road, Nottingham.

**Wanted by M.A., M.B.,**  
Ch.B., age 32, married, ASSISTANTSHIP with view to Partnership or Succession. Exceptionally popular and well received. Excellent testimonials and references. Active and energetic.—Address No. 7813, BRITISH MEDICAL JOURNAL Office, 429, Strand, W.C. 2.

**Wanted a qualified indoor**  
ASSISTANT for colliery and panel Practice. Usual bond. Salary £360.—Apply Dr. Fox, South Moor, Stanley, S.O., Co. Durham.

**Wanted Assistantship or**  
PART-TIME WORK by man studying for London Fellowship. Ample experience, medical and surgical. Must have time to attend a few classes.—Address, No. 7814, BRITISH MEDICAL JOURNAL Office, 429, Strand, W.C. 2.

**Wanted.—Assistant with a**  
view to Partnership in an old-established Practice in one of the Home Counties, share to commence with from £800-£700. Unmarried man preferred as at present there is no house available. Practice consists of good-class patients. Usual appointments and panel of 1,300. Good cottage hospital and scope for general surgery.—Address, No. 7811, BRIT. MED. JOUR. Office, 429, Strand, W.C. 2.

**Wanted an experienced X-ray**  
NURSE to take charge of private doctor's X-ray room, and do secretarial work. Salary £150.—Apply "L.M.," 10, Marlborough Place, Brighton.

**Assistant wanted in a large**  
panel and industrial Practice, not over 30. Bicycle town work. Good obstetrician.—Address, No. 7801, BRITISH MEDICAL JOURNAL Office, 429, Strand, W.C. 2.

**Assistancy, with view to**  
PARTNERSHIP (12 months). Good income, with scope for increase and opportunity for Post Graduate—political and public work. Applicants must be young, with socialist and strong labour sympathies.—Address, No. 7805, BRITISH MEDICAL JOURNAL Office, 429, Strand, W.C. 2.

**Assistant Bacteriologist.—**  
Appointment required in a hospital laboratory, or elsewhere in London. Experienced and energetic worker.—Apply, R. E. GILBERT, Wilton House, Ryde, Isle of Wight.

**Outdoor Assistant wanted in**  
working-class district, Manchester (panel). Fire, light, rooms and attendance. Salary £360 per annum. Day off weekly when possible. Able to cycle. Usual bond required. Replies to 92, Great Ancoats Street, Manchester.

**M.B. Lond., M.R.C.S., D.P.H.,**  
engaged on special work and residing in London, is free to do PART-TIME or WEEK-ENDS on very reasonable terms. Experienced in practice. Address, No. 7810, BRITISH MEDICAL JOURNAL Office, 429, Strand, W.C. 2.

**Doctors requiring Lady**  
DISPENSERS should write to Mr. J. E. WALDEN, WESTMINSTER COLLEGE, 112, St. George's Road, S.E. 1 (only address), where for nearly 25 years Ladies (many of them daughters or relatives of medical men) have been trained and sent as Dispensers to Doctors, Hospitals, &c.—No fees to Medical Men.

**Male Dispenser (qualified),**  
DRESSER and SURGERY ATTENDANT wants a post immediately. Good recent references. Accustomed to panel work. Town or country. State terms.—Address, MEDICUS, Woodside, 14, Terminus Road, Bexhill-on-Sea, Sussex.

**Maternity and Infant Welfare**  
WORK required in London by lady doctor.—Address, No. 7807, BRITISH MEDICAL JOURNAL Office, 429, Strand, W.C. 2.

**Dispenser, Book-keeper**  
qualified, wanted for country Practice in New Forest. State salary required, photograph, and two recent testimonials.—Address, No. 7812, BRITISH MEDICAL JOURNAL Office, 429, Strand, W.C. 2.

**Lady Dispenser, Student-**  
Associate, Hall, 2 years' experience in high-class dispensing business requires POST with doctor or chemist (S.W. London preferred). Competent, accurate and conscientious worker. First-class references.—Miss BROAD, 11, Melrose Road, Wandsworth, S.W.

**Lady Doctor, M.B., Ch.B.**  
(Edin.), requires PART-TIME WORK with doctor in London, two or three times a week—mornings and evenings preferred.—Address, No. 7808, BRITISH MEDICAL JOURNAL Office, 429, Strand, W.C. 2.

**V.A.D.—12 months training**  
in routine laboratory work. Experience with telephone and clerical work. Seeks POST with Doctor or Dentist.—Address, No. 7802, BRITISH MEDICAL JOURNAL Office, 429, Strand, W.C. 2.

**M.R.C.P. requires work**  
during the evenings and week-ends, London.—Address No. 7732, BRITISH MEDICAL JOURNAL Office, 429, Strand, W.C. 2.

**Secretary's Post required by**  
Lady. Four years' experience in Government Office in Administrative work, drafting letters, minutes, figures, telephoning, &c. No knowledge of typing or shorthand.—Address, F. E. ARNETT, 46, Nevorn Square, S.W. 5.

**Chauffeuse seeks Situation,**  
reliable driver, knows London. Willing take entire charge car. Well educated, would assist secretarial work if desired. Excellent references.—Write, "G. P. F.," c/o STREET'S, 30, Cornhill, E.C. 2.

**Ship's Surgeon.—Messrs.**  
ELDER, DEMPSTER & Co., Limited, have a few vacancies for Surgeons in their West African Service. Pay £20 per month. Fees allowed for attendance on passengers. Length of voyage varies from six to ten weeks, according to particular route.—Apply, Medical Superintendent, Messrs. ELDER, DEMPSTER & Co., Limited, Colonial House, Liverpool.

**LOCUM TENENS PROVIDED.**

Apply to

**ARNOLD & SONS,**  
6, GILTSPUR STREET, LONDON, E.C. 1.

Telegrams: "Instruments, London." Telephone: 5240 City. 3 Lines.

**LOCUMS**

LEE & MARTIN, LTD.

71, TEMPLE ROW, BIRMINGHAM.

Telegrams—"Locum, Birmingham."

Telephone—1116 Central.

**LOCUM TENENS PROVIDED.**

APPLY TO

**MR. PERCIVAL TURNER**  
The Oldest and only Agent who for 40 years —without Agency fee to Principals— has supplied Practitioners with reliable substitutes at short notice.

4, ADAM STREET, STRAND, LONDON, W.C. 2.

Telegrams—"Epsomian, London." Telephone—Gerrard 399.  
After 5 p.m.—Telephone: Epsom 695.

**Wanted by M.B., F.R.C.S.,**  
aged 27, a PARTNERSHIP or PRACTICE in South of England in place with hospital or cottage hospital. Unmarried. No house immediately necessary.—Apply, BLUNDELL & Co., Walter House, 418-422, Strand, London, W.C. 2.

**Wanted good class Practice**  
in Scotland, with scope for surgery and prospect of hospital appointment.—Address, No. 7803, BRITISH MEDICAL JOURNAL Office, 429, Strand, W.C. 2.

**Wanted Practices and Part-**  
nerships.—Messrs. ARNOLD & SONS, Surgical Instrument Manufacturers (Est. 100 years), are in urgent need of Practices or Partnerships for several of their clients who are anxious to settle down at once.—Send full particulars in confidence, ARNOLD & SONS, Transfer Dept., 6, Giltspur Street, London, E.C. 1. (Opposite St. Bartholomew's Hospital).

**Wanted, a Junior Partner**  
to join two practitioners in a large old-established country practice, private and panel. Share for disposal at first worth about £600 p.a. Premium 1½ years' purchase, part down, balance by instalments.—Address, No. 7728, BRITISH MEDICAL JOURNAL Office, 429, Strand, W.C. 2.

**Wanted by M.B., B.S., aged**  
33, a PARTNERSHIP or PRACTICE, panel or non-panel, in West, N.W. or S.W. suburb, or within 20 miles of London. Income about £1,000. No objection to buying a house.—Apply, BLUNDELL & Co., Walter House, 418-422, Strand, London, W.C. 2.

**Wanted Partnership (or**  
Assistantship with a view to) in West End Practice. Advertiser is experienced Graduate, well up in modern methods, and specially qualified in Bacteriology and V.D. work. Highest references.—Address, No. 7727, BRITISH MEDICAL JOURNAL Office, 429, Strand, W.C. 2.

**Wanted by M.D. (Edin.), aged**  
41, widower, 3 children, PARTNERSHIP in Practice where good schools available, or suitable PRACTICE. Income required £1,000. Capital available £500.—Address, No. 7809, BRITISH MEDICAL JOURNAL Office, 429, Strand, W.C. 2.

**For Disposal, Practices &**  
PARTNERSHIPS.—Messrs. ARNOLD & SONS, Surgical Instrument Manufacturers (Est. 100 years) have been instructed to privately dispose of a large number of really good Practices and Partnerships. Gentlemen are requested to state their requirements and amount of capital available. No charge to purchasers.—Address, ARNOLD & SONS, Transfer Dept., 6, Giltspur Street, London, E.C. 1. (Opposite St. Bartholomew's Hospital).

**For Disposal.—A good Prac-**  
tice is not always to be had directly, but Mr. PERCIVAL TURNER can generally offer applicants something suitable. Nearly all the best Practices are sold by him without being advertised.—Full information free on application to 4, Adam St., W.C. 2.

**For Sale, old-established**  
country town PRACTICE on the Thames doing over £2,000 per annum. Price 3,000 guineas. Address, No. 7726, BRITISH MEDICAL JOURNAL Office, 429, Strand, W.C. 2.

**For immediate Sale.—Old-**  
established, unopposed country PRACTICE in South Wales bringing in over £1,300 including £400 from panel and appointments. Good house with large garden. Rent most moderate. Railway station, hunting, fishing, shooting. Premium for quick sale, £1,100.—Address, No. 7733, BRITISH MEDICAL JOURNAL Office, 429, Strand, W.C. 2.

**To Purchasers.—Do not buy**  
without a full investigation by an expert. Forty years experience has given Mr. PERCIVAL TURNER an unique ability to advise in all cases. Terms free on application to 4, Adam Street, Strand, W.C. 2. Telephone: Gerrard 399. Telegrams: "Epsomian, London."

**MB., B.S. (Lond.), M.R.C.S.,**  
L.R.C.P., age 27, married, seeks PRACTICE, PARTNERSHIP, or ASSISTANTSHIP with view. Has been H.S., H.P., and Casualty Medical Officer at first-class London hospital, and has held special appointments in Ear, Nose and Throat, Tuberculosis, and at Children's Hospital. Late Hon. Assistant Surgeon to Provincial General Hospital. Experience in private practice. Served R.N. during war. Advertiser has car and furniture. Free in February or March.—Address, No. 7824, BRITISH MEDICAL JOURNAL Office, 429, Strand, W.C. 2.

**Death Vacancy.—Manchester**  
district working-class PRACTICE. Receipts about £1,100, including £900 panel. Well situated house, with all conveniences, yearly tenancy. Rent £40. Furniture also if required. Offers invited.—Apply, JOSEPH GREGORY, Solicitor, 6, Pall Mall, Manchester.

**Seaside Practice (not popular**  
resort). Income £750 to £1,000, where comfortable small house (to rent) and good garden, wanted by well-qualified man. Good surgeon and accustomed to eye work.—Address particulars to No. 7806, BRITISH MEDICAL JOURNAL Office, 429, Strand, W.C. 2.

**Perthshire.—Town and**  
Country PRACTICE for sale. Receipts last year £830, including £300 from panel. Ten-roomed house, large well-stocked garden, garage, &c. £32 p.a. Opposition slight, scope for increase. Premium £1,155. Apply PEACOCK & HADLEY, 19, Craven Street, Strand, London, W.C. 2.

## To Medical Men or Colonials

who value real home comforts, good cooking, and attendance, Bathroom, quiet room for reading. Convenient for tubes and hospitals. Highest references. — Apply, Mrs. TAYLOR, 23, Stonor Road, Kensington, W.14.; off Avonmore Road; 2 Minutes W. Kensington and Addison Road Stations.

## Partnership offered to lady

Doctor in private Tuberculosis Sanatorium. Much scope for energetic lady. — Address, in first instance, No. 7718, BRITISH MEDICAL JOURNAL Office, 429, Strand, W.C. 2.

Established 1860.

## Messrs. BEDFORD & CO.

(C. E. BEDFORD, F.S.I., F.A.I.)

Surveyors, Auctioneers, and Estate Agents,  
10, WIGMORE STREET,  
CAVENDISH SQUARE, W.1.  
SPECIALISTS IN PROFESSIONAL  
HOUSES AND CONSULTING ROOMS  
IN HARLEY STREET AND LEADING MEDICAL POSITIONS  
Telephone: 2415 Paddington.

## Electric Lamps.—Manufacturers

turers of first-class Tungsten Electric Lamps have factory throw-outs and odd sizes for sale. Very cheap from 1s. 2d. each. Sound delivery guaranteed and good burning. Write for quotations, giving particulars of voltages and candle-powers required. Storekeeper, CORONA LAMPWORKS, LTD., Ascham Street, St. Pancras, London, N.W. 5.

## Willow, Dry, Well-seasoned,

for Sale, suitable for Artificial Limb Manufacturers; Thigh, Shin, FEET Pieces. Also quantity well-seasoned trees, 5in. to 10in. diameter. Inspection invited. Prices, &c., on application to J. THORNHILL & Co., Ltd., 3/4, Great Winchester Street, E.C. 2.

## For Ladies

## who need Abdominal Support.

May I call your attention to the Corset-Belt which has proved most effectual in providing support to abdominal cases in women such as Visceroperitonitis and Hernia, and after operations on the Uterus, Kidneys, and Liver.

This Corset and Belt in one which I have invented obviates the necessity of wearing two garments. It is very comfortable to wear and also improves the figure.

I have the honour of working for the most famous Surgeons and Physicians in England as well as for the Metropolitan and St. Bartholomew's Hospitals.

WRITE FOR BOOKLET.

## Madame Rose de Paris (Corsetière)

80, Mortimer Street,  
Regent Street, W.  
Telephone: Mayfair 5506.

## MUFTI for MEDICAL MEN.

## Medical men requiring stylish

DRESS can secure well-tailored clothes made to measure in 24 hours, or they can select same from our READY for SERVICE MODELS. Finest materials at most reasonable prices.

Suits and Overcoats in great variety from £8 8s. Patterns to suit all tastes post free on application. A PERFECT FIT GUARANTEED.

Visitors to London can leave Record Measures or order and fit same day.

HARRY HALL, 207, OXFORD STREET, W. 1.

PHONES: MUSEUM 820-821, CITY 2085.

## Doctors' A/c Forms printed

in best style—250, 10s.; 500, 15s.; 1,000, 25s. Letter heads, Post Card heads, Calling Cards, &c., at equally moderate rates.—R. ANDERSON & SON, Printers, 1, Hill Place, Edinburgh. Samples sent. DOCTOR'S TESTIMONIALS printed for all posts, best work, quick dispatch. 30 yrs' speciality.

## The Manchester Northern

HOSPITAL FOR WOMEN & CHILDREN,  
Park Place, Cheetham Hill Road,

The Committee of Management require the services of a duly qualified HOUSE SURGEON, to commence duties in February next. Salary with apartments and board, £150 per annum.

The appointment is not restricted to a male House Surgeon.

Applications, with testimonials, and stating age, and experience, to be sent to Mr. HUBERT TEAGUE, Secretary, 38, Barton Arcade, Manchester, not later than January 7th.

## Worcestershire County COUNCIL

### APPOINTMENT OF ASSISTANT COUNTY MEDICAL OFFICER.

Applications are invited for the post of an Assistant County Medical Officer for the Administrative County of Worcester.

Applicants, either male or female, must be registered Medical Practitioners of suitable experience and qualifications (Diploma in Public Health desirable), and be between 25 and 45 years of age.

The duties will be (1) to undertake Medical Inspection and Treatment of Elementary School Children; (2) to act as Assistant Tuberculosis Officer; (3) to supervise Maternity and Child Welfare work, and (4) to undertake the examinations necessitated by the Mental Deficiency Act, 1913.

The above duties will be subject to the directions of the County Medical Officer.

The person appointed will be required to devote the whole of his time to the work, and to reside in such place as the County Council may direct.

The salary will be £450 per annum, with travelling and personal expenses.

Applications (on forms to be obtained from the County Medical Officer) accompanied by not more than 3 recent testimonials, must be received by 12 noon on 13th January, 1920, addressed to the COUNTY MEDICAL OFFICER, 29, Foregate Street, Worcester, and endorsed "Assistant County Medical Officer."

Canvassing disqualifies, and neither the names of the members of the County Council or of the Committees will be supplied.

C. H. BIRD,  
Shirehall, Worcester. Clerk of the County Council.

## Liverpool Royal Infirmary.

A vacancy having occurred on the Staff, the Committee invite applications for the Office of DERMATOLOGIST to the Institution.

Applications must be made in writing, addressed to the CHAIRMAN OF THE COMMITTEE at the Royal Infirmary, Liverpool, and no Candidate will be eligible who has not so applied within twenty-one days of this date, viz., by the 10th January, 1920.

The Election will be made by the Election Committee, a list of whom and particulars of the qualifications necessary for the appointment will be supplied on application to the Secretary of the Hospital.

Law No. 55 states:—"Any Candidate who advertises in the public papers, or Canvasses in person or by writing any Member of the Election Committee, shall be disqualified, but Candidates shall be at liberty to send to members of the Election Committee copies of their applications, accompanied by not more than ten testimonials."

H. WADE DEACON,  
20th December, 1919. Chairman.

## West Riding County Council.

### ASSISTANT MEDICAL OFFICER (non-resident).

The County Council of the West Riding of Yorkshire invite applications for the appointment of an Assistant Medical Officer (non-resident) for the Middleton-in-Wharfedale Sanatorium, near Ilkley.

The salary will be £450 per annum. Further particulars and form of application may be had from the undersigned, by whom all applications must be received not later than 12th January, 1920.

FRANCIS ALVEY DARWIN,  
Clerk of the County Council.  
County Hall, Wakefield. December, 1919.

## Bolingbroke Hospital,

Wandsworth Common.

Wanted HONORARY PHYSICIAN in charge X-Ray and Electrical Department.

To attend at least three times a week. Applications with testimonials to be sent not later than January 10th to the Secretary, Bolingbroke Hospital, Wandsworth Common, S.W.

## Queen's Hospital for Children,

Hackney Road, Bethnal Green, E.

The following appointments are shortly falling vacant:—

(a) HOUSE PHYSICIAN.

(b) CASUALTY HOUSE SURGEON.

Six months appointment.

Salary £100 per annum, with board, residence and washing.

Applications from duly qualified and registered candidates should be sent as soon as possible to T. GLENTON KERR, Secretary.

15th December, 1919. Telephone, Dalston 305.

## Queen's Hospital for Children,

Hackney Road, Bethnal Green, E. 2.

DENTAL SURGEON required for L.C.C. Dental Centre. Attendance five half days a week. Salary £250 a year. Applications, qualifications, and experience, should be sent as soon as possible to T. GLENTON KERR, Secretary.

15th Dec., 1919. Telephone: Dalston 305.

## Parish of Bermondsey.

### FIRST AND SECOND ASSISTANT MEDICAL OFFICERS OF THE INFIRMARY.

The Guardians of the Parish of Bermondsey invite applications from duly qualified medical gentlemen, for the appointment of First and Second Assistant Medical Officers of the Infirmary, Lower Road, Rotherhithe, S.E. (The First Assistant ranks next to Deputy Medical Superintendent).

Salary for the First Assistant £350 per annum, rising £25 yearly to £450 per annum, and for the Second Assistant £300 per annum; both appointments with rations, furnished apartments, washing, attendance and war bonus of £79 14s. 9d. and £74 14s. 9d. per annum respectively. Candidates for First Assistant Medical Officer possessing experience in Bacteriology will receive preferential consideration.

The persons appointed will be required to devote their whole time to the service of the Guardians, reside in the Infirmary, and act under the direction of the Medical Superintendent, and previous institution experience will be an advantage.

The Infirmary contains 640 beds. The appointment is subject to the sanction of the Ministry of Health and the provisions of the Poor Law Officers' Superannuation Act, 1896.

Applications, with particulars of age, previous experience, qualifications, diplomas and certificates held, and date and place of registration, together with copies of three recent testimonials, must be made on forms to be obtained on application to the undersigned.

Applications must be returned to me at the latest by 10 a.m. on Wednesday, the 14th January, 1920, and selected candidates will have notice when to attend a meeting of the Guardians. Canvassing, either directly or indirectly, will disqualify.

By order, HENRY H. REEVE,  
Guardians' Offices, Clerk to the Guardians.  
283, Tooley Street, London, S.E. 1.

## Hospital for Children,

Lasowe, Cheshire.

240 beds for Surgical Tuberculosis,  
60 beds for Wasting Babies.

Vacant on February 1st, 1920, post of JUNIOR MEDICAL OFFICER (Resident), Salary £150, with board, residence and laundry.

Suitable for Post-graduate work. Forty minutes from Liverpool.

Applications to be sent to the SENIOR MEDICAL OFFICER by January 8th, 1920.

## Stockton and Thornaby

HOSPITAL, Stockton-on-Tees (80 beds).

Wanted, a SENIOR HOUSE SURGEON, previous hospital experience essential. Male, fully-qualified and unmarried; to enter upon duties at an early date.

Salary £300 per annum, with residence, board and laundry.

Applications, stating age and qualifications, with copies of three recent testimonials to be sent to the undersigned not later than January 3rd, 1920.

H. G. SANDERSON, Secretary.

## The Sheffield Royal Hospital.

Vacancy for Resident. Applications are invited for the post of OPHTHALMIC HOUSE SURGEON in the above hospital. Salary £135, with board, washing and residence in the hospital. Candidates must be registered medical practitioners and unmarried. Applications, with copies of testimonials, should be sent as early as possible to

JOE W. ROBINSON, Secretary.

The Board Room, 16th December, 1919.

## The Royal National Hospital

FOR CONSUMPTION AND DISEASES OF THE CHEST, Ventnor, Isle of Wight.

A male ASSISTANT RESIDENT MEDICAL OFFICER is required for twelve months, to take up duties at an early date. Salary £250 per annum, with board and lodging in the Hospital.

Every candidate must be doubly qualified, registered and unmarried, and should have knowledge of Bacteriological methods.

Applications, stating age and qualifications (with one copy of three recent testimonials), may be sent at once to the SECRETARY, R.N.H.C., 18, Buckingham Street, Strand, London, W.C. 2.

Dated 16th December, 1919.

## County Asylum,

Whittingham, Preston, Lancs.

ASSISTANT MEDICAL OFFICER required. Salary £300 plus £125 bonus per annum, together with board, furnished apartments and washing. Candidates must be unmarried and not over 30 years of age, and duly registered under the Medical Act. The appointment is subject to the provisions of the Asylum Officers' Superannuation Act, 1909. Applications, stating age and qualifications, to be sent to the Medical Superintendent.

# APPOINTMENTS—Important Notice.

## (a)—British Islands.

Medical Practitioners are requested not to apply for any appointment referred to in the following table without having first communicated with the Medical Secretary of the British Medical Association, 429, Strand, London, W.C. 2.

| Town or District.  | Town or District.  | Town or District.  |
|--|--|--|
| <b>CONTRACT ENGLAND.</b>   | <b>PRACTICE ENGLAND (continued).</b>                                 | <b>WALES.</b>  |
| COUNTY OF SALOP.<br>(Venereal Disease Medical Officer.)                                | NOTTINGHAMSHIRE.<br>(All Colliery Appointments.)                     | GILFACH GOCH, GLAMORGAN.<br>(Workmen's Medical Scheme.)                    |
| MIDDLESBOROUGH, SOUTH BANK, & ESTON.<br>(Medical Aid Associations or Workmen's Clubs.) | WORCESTER.<br>(Amalgamated Friendly Societies' Medical Association.) | LLWYNPIA, GLAMORGAN.<br>(Colliery Appointments.)                           |
|  |  | OAKDALE, MON.<br>(Medical Officer for Model Village and Cottage Hospital.) |

## (b)—Colonial.

Medical Practitioners are requested not to apply for any appointment referred to in the following table without having first communicated with the Honorary Secretary of the Division or Branch named in the second column, or with the Medical Secretary of the British Medical Association, 429, Strand, London, W.C. 2.

| Town or District.  | Hon. Sec. of Division or Branch.   | Town or District.   | Hon. Sec. of Division or Branch.   | Town or District.                                       | Hon. Sec. of Division or Branch.   |
|--|--|---|--|---|--|
| NEW SOUTH WALES.<br>(All Friendly Society Appointments.) | Dr. R. H. TODD Hon. Sec., New South Wales Branch, B.M.A. Building, 30-34, Elizabeth Street, Sydney, N.S.W. | QUEENSLAND.<br>(Brisbane Associated Friendly Societies and Australian Natives Association.) | Dr. J. CAMERON HEMSLEY (Acting Hon. Sec., Queensland Branch), Adelaide Street, Brisbane. | VICTORIA.<br>(All Friendly Society Lodge Appointments.) | Dr. J. W. DUNBAR HOOPER (Hon. Sec., Victorian Branch), 2, Collins Street, Melbourne, Victoria.                                   |
|  |  | TASMANIA.<br>(State-aided Hospitals.)   | Dr. E. BRETTINGHAM MOORE (Hon. Sec. Tasmanian Branch), 149, Macquarie Street, Hobart.    | WESTERN AUSTRALIA.<br>(All Appointments.)               | Dr. C. H. SHEARMAN (Hon. Sec., Western Australian Branch), No. 6, Bank of New South Wales Chambers, St. George's Terrace, Perth. |

Address: 429, Strand, W.C. 2.  
December 23rd, 1919.

By order of the Council of the British Medical Association

ALFRED COX, Medical Secretary.

## East African Medical APPOINTMENTS.

The Secretary of State for the Colonies announces vacancies for posts of MEDICAL OFFICERS in the following Protectorates:—East Africa Protectorate, Uganda, German East Africa, Nyasaland, Zanzibar, Somaliland.

The salary of a medical officer is on the scale of £400-£20-£500 a year, with duty allowance of £40, and after six years' service £525-£25-£600 a year, with duty allowance of £50. Temporary war bonus is paid at present, the annual amount corresponding to a salary of £400, being £55 to single officers and £105 to married officers.

The grading of the service posts in East Africa, which are filled by the promotion of medical officers, may be judged from the following arrangements in the East Africa Protectorate:—

Senior Medical Officer at £300-£25-£750, duty allowance £60;

Deputy Principal Medical Officer, or Senior Sanitary Officer, £750-£25-£850, with duty allowance £75;

Principal Medical Officer, £850-£50-£1,000, duty allowance £85.

Certain special appointments are graded as follows:—

Bacteriologist, as a senior medical officer, assistant bacteriologist as a medical officer, higher scale; medical officers of health, as medical officers; in Zanzibar the medical officer of health is equivalent to a medical officer, higher scale, with additional special allowance of £100 a year, and the assistant medical officer of health as an ordinary medical officer, with additional special allowance of £50 a year. The principal medical officer in Nyasaland is graded as a deputy principal medical officer. The principal medical officer in Zanzibar is graded as a senior medical officer. The head of the Medical Department in Samaliland is graded as a senior medical officer. Quarters are provided free of rent, but not of rates or similar outgoings, or an allowance is given in lieu. Leave is granted with full pay at the rate of 28 days or 8 days, according to the officer's station in respect of each month of service, and an equal period of return leave if the officer returns to the Protectorate. A free first-class passage is allowed on first appointment and on leave.

All appointments are pensionable. Medical officers are permitted to retire after nine years' service with a gratuity of £1,000, or after twelve years' service with a gratuity of £1,250; this gratuity is in lieu of pension.

Medical officers are permitted to take private practice on the understanding that they give precedence to their official duties.

Intending candidates should write to the Private Secretary for Appointments, Colonial Office, S.W. 1, for forms of application. No testimonial, etc., should be sent in until the candidate has received a form of application from the Colonial Office.

## East Gloucestershire United DISTRICTS.

Appointment of MEDICAL OFFICER OF HEALTH and ASSISTANT MEDICAL INSPECTOR OF SCHOOL CHILDREN.

Applications are invited for the appointment of a whole-time Medical Officer of Health and Assistant Medical Inspector of School Children for the Urban Districts of Cirencester, and Tetbury and the Rural Districts of Cirencester, Dursley, Tetbury and Wheatenburst, and Superintendent of the Cirencester Infectious Diseases (Joint) Hospital.

Applicant must be a duly qualified and registered medical practitioner and hold a Diploma in Public Health or other equivalent qualifications.

The salary for the combined offices will not be less than £700 per annum, payable quarterly and rising by annual increments of £50 to £800 per annum, the initial salary depending on the previous experience of the applicant in public health work.

The population of the district at the last census was 44,103.

Forms of application and further particulars may be obtained at my office and must be returned to me, accompanied by copies of three recent testimonials not later than the 30th December, 1919.

Canvassing members of the Councils either directly or indirectly will be deemed a disqualification.

H. St. G. RAWLINS.

Clerk to the Joint Committee,  
Rural District Council Offices,  
Cirencester, 10th December, 1919.

## West Herts Hospital, Hemel Hempstead (24 miles from Euston). 80 Beds.

Wanted, RESIDENT MEDICAL OFFICER to commence duties first week January.

Rooms, board, and laundry. Salary £200. Particulars to be obtained of and applications stating essential particulars and enclosing copy recent testimonials, to be sent at once to

ROBERT L. BUTTERFIELD,  
Clerk to the Hospital.

## County Asylum, Mickleover, Derby.

JUNIOR ASSISTANT MEDICAL OFFICER wanted. Salary £300, rising to £350, with apartments, board, washing, &c., subject to provisions of Asylum Officers' Superannuation Act.

Apply, stating age and particulars, enclosing copies of three recent testimonials, to the Medical Superintendent.

## National Hospital for the PARALYSED and EPILEPTIC.

Queen Square, W.C. 1.

### HOUSE PHYSICIAN.

This appointment being vacant, the Board of Management invite applications from duly qualified candidates. The conditions of the appointment will be supplied by the undersigned. The salary is £150 a year with board and lodging. Applications, accompanied by copies of three recent testimonials should be sent in on or before December 31st, 1919.

GODFREY H. HAMILTON, Secretary.

## Cumberland Education COMMITTEE.

### SCHOOL DENTISTS.

The Committee propose to appoint Two Whole-time Dentists, and applications are invited from qualified and registered Dentists (men and women). The duties will primarily consist in examining the teeth of the school children in the county and in remedying dental defects.

Some work may also be necessary under the County's Maternity and Child Welfare Scheme.

Salary £400 per annum, rising to £500 by £25 annually with reasonable travelling expenses.

Applications, which must be on the form provided, must reach the School Medical Officer, 45, Warwick Road, Carlisle, on or before the 31st December, 1919, and forms of application may be obtained from him, together with further particulars of the appointment.

Canvassing, directly or indirectly, will disqualify.

C. COURTENAY HODGSON

Secretary to the Committee.

The Courts, Carlisle. December, 1919.

## The Hospital for Sick CHILDREN, Newcastle-upon-Tyne (74 beds).

Applications are invited for the post of JUNIOR RESIDENT MEDICAL OFFICER (Male). Salary £200 per annum, with board, residence, and laundry. Duties to commence the beginning of January, 1920. Applications, stating age and copies of testimonials, to be sent to the Secretary, Mr. Neil Brodie, Star Buildings, 26, Northumberland Street, Newcastle-upon-Tyne.

**Medical Officer and Public VACCINATOR** wanted for the PARISH OF SHAPANSEY, Orkney. Salary £170 per annum. Free house, parish and panel Practice.—For further particulars apply to G. MONCRIEFF, Clerk to Parish Council.



## Middlesbrough Education COMMITTEE.

### APPOINTMENT OF SCHOOL DENTIST.

The Middlesbrough Education Committee invite applications for the appointment of School Dentist. The Officer appointed must be a duly qualified and registered Dentist, and will be required to act under the direction of the School Medical Officer. He will not be allowed to engage in private practice. Salary £400 per annum.

Applications, stating age, qualifications and experience, accompanied by copies of not more than three recent testimonials, should reach the undersigned as early as possible, but in no case later than Saturday, 3rd January, 1920.

EMMERSON BECKWITH,  
Education Officer, Director and Secretary.  
Middlesbrough, 15th December, 1919.

## Manchester Hospital for CONSUMPTION AND DISEASES OF THE THROAT AND CHEST.

Wanted a RESIDENT MEDICAL OFFICER for the In-patient Department, Bowden, Cheshire.

The duties include attendance on certain days at the Out-patient Department, Manchester, and at operations in the Throat Department of the Hospital. Candidates must be registered.

Salary £250 per annum, with board, apartments, washing and railway contract.

Applications, with copies of testimonials, to be sent in not later than December 31st.

C. W. HUNT, Secretary.  
Hardman Street, Deansgate, Manchester.

## Plymouth Education AUTHORITY.

A full-time ASSISTANT SCHOOL MEDICAL OFFICER (man or woman) is required. Salary £400, rising by £25 yearly to £500 per annum. Application form and particulars as to duties will be forwarded on application to the undersigned. Last day for applications 10th January, 1920.

E. CHANDLER COOK,  
Education Officer, Education Secretary.  
Coburg Street, Plymouth.  
15th December, 1919.

## Stoke-upon-Trent Union.

### DISTRICT MEDICAL OFFICER AND PUBLIC VACCINATOR.

The Guardians invite applications for the appointment of District Medical Officer and Public Vaccinator for the Shelton District of the Parish of Hanley. Area, 995 acres; population, 34,788.

A commencing salary after the rate of £160 per annum is payable in respect of the District Medical Officership. The Medical Officer is to provide a Surgery and Medicines. The fees as Public Vaccinator are at the rate of 5s. per case for domiciliary vaccination.

Further information, if desired, may be obtained from the undersigned, to whom applications, together with copies of two testimonials, must be delivered not later than January 6th, 1920.

T. WOOD,  
Union Offices, Clerk to the Guardians.  
Stoke-upon-Trent. 10th December, 1919.

## Parish of Barvas.

POOR LAW MEDICAL OFFICERS (2), to act also as public Vaccinators, wanted, one for the North Ward and one for the South Ward of the Parish, to be stationed in positions to be approved by the Parish Council. Populations—North Ward, 3,142 and South Ward, 3,879. Salaries £215 and £245 respectively, including grants by the Scottish Board of Health on condition that the doctors appointed enter into an agreement to give effect to the Board's scheme of modified fees in the respective areas. Besides the salaries stated there should be a considerable income from private and National Health Insurance practice. The doctor's appointed will require to provide themselves with motor cars or motor cycles. Gaelic speaking will be a recommendation. Further particulars may be obtained from the undersigned, with whom applications with full particulars as to age, qualification, etc., and 14 copies of testimonials, are to be lodged not later than 7th proximo.

GEO. MACLEOD, Clerk.

Barvas Parish Council Office,  
Stornoway, 11th December, 1919.

## Salop County Council.

### MEDICAL INSPECTION OF SCHOOL CHILDREN. MATERNITY AND CHILD WELFARE. ASSISTANT MEDICAL OFFICERS.

Applications are invited from Medical Practitioners for the three posts under these schemes.

Salary £450, rising annually by £10 to £500, with travelling and out-of-pocket expenses on a fixed scale.

Applications should be sent on or before January 3rd to the County Medical Officer of Health, County Buildings, Shrewsbury, from whom forms of application, conditions of appointment, list of duties and any other information can be obtained.

## Seamen's Hospital Society.

The Committee of Management invite applications for the appointment of SURGEON with charge of Out-patients at the Dreadnought Hospital, Greenwich. The elected Candidate will be appointed for 12 months, but will be eligible for re-election.

Candidates are invited to attend a Meeting of the Medical Council at the Hospital for Tropical Diseases, Endsleigh Gardens, N.W., on Monday, 19th January, 1920, at 5 p.m.

Applications to be sent in on or before Thursday, 15th January, to the undersigned, from whom further particulars can be obtained.

Seamen's Hospital Society, By Order,  
Greenwich, S.E. 10. P. MICHELLI,  
12th December, 1919. Secretary.

## West End Hospital for NERVOUS DISEASES,

73, Welbeck Street, W. 1.

Applications are invited for the post of PHYSICIAN to Out-patients. Candidates must be Fellows or Members of the Royal College of Physicians of London and Graduates in Medicine of one of the Universities of the U.K. Applications with copies of recent testimonials should be sent to the undersigned before the 15th January.

D. D. KIRKALDY WILLIS, B.A.  
Secretary.

## County Borough of Burnley.

### TUBERCULOSIS OFFICER AND DIRECTOR OF MUNICIPAL LABORATORY.

Applications are invited for the above post, the gentleman appointed to act also as Chief Assistant and Deputy to the Medical Officer of Health.

The possession of D.P.H. and a special knowledge in the above mentioned branches of Public Health Work will be necessary.

The appointment is subject to 3 months notice by one party to the other.

Salary £800 per annum, rising by two annual increments of £50 to a maximum of £700 per annum.

Forms of application obtainable from the Public Health Office, St. James Street, Burnley, Lancs., to be forwarded not later than January 7th, 1920, to the Medical Officer of Health.

PEREGRINE THOMAS,

Town Hall, Burnley, Lancs. Town Clerk.

## County Borough of Burnley.

### SCHOOL MEDICAL OFFICER (Male or Female),

Applications are invited for the post of Assistant Medical Officer, who will be chiefly employed as Assistant School Medical Officer.

The possession of the D.P.H. will be necessary. Salary £500 per annum. The appointment is subject to 3 months notice by one party to the other.

Forms of application obtainable from the Public Health Office, St. James Street, Burnley, Lancs., to be forwarded not later than January 7th, 1920, to the Medical Officer of Health.

PEREGRINE THOMAS,

Town Hall, Burnley, Lancs. Town Clerk.

## Addenbrooke's Hospital, CAMBRIDGE.

The General Committee invite applications for the appointment of HONORARY ASSISTANT SURGEON in charge of the Gynaecological Department (with beds in the Hospital).

Applications, accompanied by 14 copies each of three recent testimonials, to be sent to the undersigned on or before 5th January, 1920.

W. H. HEAD, Secretary-Superintendent.  
December 16th, 1919.

## London County Council

The Council is about to appoint 5th ASSISTANT MEDICAL OFFICERS at the London County Mental Hospitals. Age not to exceed 35 years. Candidates must be registered to practice both in medicine and surgery in England. The candidates appointed will be pensionable under the Asylums Officers' Superannuation Act. Preference will be given to candidates who have served with H.M. Forces, or who offered themselves for such service. Salary £300 a year, rising by annual increments of £25 to £400. In addition, at present, war bonus and percentage additional rate of £180 a year. No emoluments. Charge made for board, lodging, etc. (at present £2 2s. weekly). Full particulars and conditions of appointment on form of application (on which alone application must be made) obtainable from the Asylums Officer, London County Council, 13, Arundel Street, Strand, W.C. 2.

JAMES BIRD,  
Clerk of the London County Council.

## MALE NURSES

LONDON—10, THAYER ST., MANCHESTER SO., W. 1.  
BIRMINGHAM—78, HAGLEY ROAD.  
MANCHESTER—237, BRUNSWICK STREET (Facing Owens College)  
EDINBURGH—7, TORPHICHEN STREET.

Terms from £2 12 6 to £3 13 6

ALL NURSES ARE FULLY INSURED AGAINST ACCIDENT.

## TEMPERANCE CO-OPERATION, LTD.

TRAINED MALE NURSES AND VALET ATTENDANTS for MENTAL, MEDICAL, TRAVELLING AND ALL CASES.



Telephones:

London: 538 PADDINGTON  
Birmingham: 2106 MIDLAND  
Manchester: 4699 CENTRAL  
Edinburgh: 2715 CENTRAL

Telegrams:

ASSUAGED, LONDON  
ASSUAGED, BIRMINGHAM  
ASSUAGED, MANCHESTER  
ASSUAGED, EDINBURGH

Please address all communications. W. WALSH, Secretary.

Tel. 2253 MAYFAIR.

THE CO-OPERATION OF Telegrams: "NURSINGDOM, LONDON."

## TEMPERANCE MALE AND FEMALE NURSES,

60, WEYMOUTH STREET, PORTLAND PLACE, LONDON, W.

Reliable and experienced Nurses for all cases at all hours. Special Staff for Neurasthenia and Nerve Cases.

Nurses insured against Accident. Terms £2 2s. to £3 3s. M. SULLIVAN, Secretary, or Lady Superintendent.

## MALE NURSES LTD.

Telephone (TEMPERANCE) ASSOCIATION "GENTLEST, LONDON."  
5969 MAYFAIR 24, NOTTINGHAM ST., W. 1.

## FEMALE NURSES

Telephone (TEMPERANCE) ASSOCIATION "GENTLEST, LONDON."  
5969 MAYFAIR 24, NOTTINGHAM ST., W. 1.

CERTIFICATED HOSPITAL NURSES (MALE AND FEMALE) AVAILABLE DAY AND NIGHT FOR MEDICAL, SURGICAL, MENTAL, AND ALL CASES.

TERMS £2 2/- to £3 3/-

ALL NURSES ARE FULLY INSURED AGAINST ACCIDENT.

M. J. QUINLAN, SECRETARY.

**TEMPERANCE**LONDON: 43, NEW CAVENDISH STREET.  
GLASGOW: 28, WINDSOR TERRACE.MANCHESTER: 76, OXFORD ROAD.  
DUBLIN: 47, MESPIE ROAD.**MALE NURSES LTD.****TELEGRAMS:**Tactear, London. Tactear, Manchester. London, 1277 Mayfair. Manchester, 5213 Central.  
Surgical, Glasgow. Tactear, Dublin. Glasgow, 477 Central. Dublin, 531 Ballsbridge.**TELEPHONES:**Superior trained Male Nurses for Medical, Surgical, Mental, Dipsomania, Travelling and all cases. Nurses reside on the premises, and are always ready for urgent calls, Day or Night. Skilled Masseurs and good Valet Attendants supplied.  
Terms from £2 4 6.**CO-OPERATION**

Apply, The Secretary.

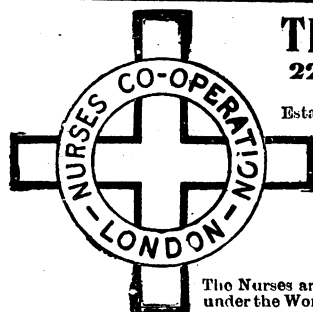
**THE LONDON TEMPERANCE NURSES CO-OPERATION** } 18, ADAM STREET, PORTMAN SQUARE, LONDON, W. 1.  
 Telephone: MAYFAIR 2302. Telegrams: "NURSLONTEM, PHONE, LONDON."  
 Supplies Fully Trained Hospital Nurses, also MENTAL AND MALE NURSES.  
 Nurses Insured against Accident. TERMS FROM £3 3s. TO £3 13s. 6d. APPLY, SECRETARY.

**MENTAL NURSES**

(MALE AND FEMALE)

Telephone: MAYFAIR 2387.  
Telegrams: "ISOLATION, LONDON."

NURSES FULLY INSURED AGAINST ACCIDENT.

**ASSOCIATION, Ltd.**  
54, George Street, Manchester Sq., W. 1.Superior Mental Nurses (Male and Female) supplied at a moment's notice Day or Night for Nerve and Mental Cases.  
Apply SECRETARY.**THE NURSES' CO-OPERATION,**

22, Langham Street, Portland Place, W. 1.

FOUNDED 1891.

INCORPORATED 1894.

Established to secure to Nurses the full remuneration for their work and to supply

FULLY-TRAINED HOSPITAL

MEDICAL  
SURGICAL  
MENTAL  
MATERNITY  
FEVER  
CHILDREN'S  
MASSAGE

NURSES

To work under medical supervision

The Nurses are fully insured by the Co-operation against the Employers Liability under the Workmen's Compensation Act, 1906.—Miss HOADLEY, Lady Superintendent

Telegraphic Address: "Aprons, London."

Telephone: Mayfair 6742 and 6743.

**MALE AND FEMALE NURSES' TEMPERANCE ASSOCIATION.**

Telephone, PARK 3901.

Telegrams, "KENURSTON, NOTTING, LONDON."

Qualified Nurses, Masseurs and Masseuses for all Cases.  
 69, PALACE GARDENS TERRACE, (THE MALL), KENSINGTON, LONDON, W. 8.  
 Nurses Insured against Accidents. Terms from £2 4s. 6d. to £3 13s. 6d. Apply Secretary

**MENTAL NURSES**

Male or Female.

Telephone: PADDINGTON 2437.  
Telegrams: "ASSISTIAMO, LONDON."**MEDICAL NURSES**Telephone: PADDINGTON 2437.  
Telegrams: "ASSISTIAMO, LONDON."**MALE NURSES**Telephone: PADDINGTON 2437.  
Telegrams: "ASSISTIAMO, LONDON."**THE NURSES' ASSOCIATION**  
(in conjunction with the MALE NURSES' ASSOCIATION)28, York Street, Baker Street, London, W. 1.  
(Miss) MULLICENT HICKS, Superintendent.  
W. J. HICKS, Secretary.

York Road (General Lying-in HOSPITAL, Lambeth, S.E.—Established 1765. Patrons, H.M. THE QUEEN and H.M. QUEEN ALEXANDRA. Medical Students and Qualified Practitioners admitted to the Practice of this Hospital. Telephone, 794 Central. For rules, fees, etc., apply ROSE H. WHYTE, Secretary.

ESTABLISHED over 40 Years.

**Mr. PERCIVAL TURNER, 4 & 5, Adam Street, Strand, W.C. 2.**

Telegrams: "EPSOMIAN, LONDON."

Telephone: GERRARD 399.

After Office Hours—EPSOM 695.

LOCUM TENENTS provided—no charge to Principals. Every description of AGENCY and ACCOUNTANCY work undertaken.

**PARTNERSHIPS FOR DISPOSAL**

- No. 6681. YORKSHIRE.—£5,000 a year. Half-Share for sale in large prosperous Town. No panel.  
 " 6679. YORKSHIRE.—£3,000 a year. Old established non-panel. Residential Town on Coast. 1/4 Share at first.  
 " 6675. SOMERSET.—£1,000 a year. Country PRACTICE. 1/2 Share £300.  
 \* " 6667. ESSEX.—£1,100 a year. Junior Partner wanted. Increasing PRACTICE, old-established. Great scope. Guaranteed share £500 a year to begin with. Price £750.

- No. 6650. YORKSHIRE.—£3,000 a year. Shipbuilding Town. 1/3 Share. Senior retiring.  
 " 6625. YORKSHIRE.—£2,600 a year. Small Country Town. Cottage Hospital. Panel 950. 1/3 Share for sale at first.  
 " 6615. MIDLANDS.—£1,500 a year. Unopposed. Panel 1,500. Half Share for sale.

**PRACTICES OVER £800 A YEAR.**

- No. 6665. WEST COAST.—£800 a year. Old-established. Seaside resort. No panel. Easily worked. Good house facing sea. Price £350.  
 " 6633. MIDLANDS.—£1,000 a year. Panel 700. Old-established. Unopposed. Good house, large garden. Price £1,200.  
 " 6654. HAMPSHIRE.—£1,000 a year. Old-established. Favourite seaside resort. Panel 410. Very little Midwifery. Good house and garden. Premium £1,500.  
 " 6634. LONDON SUBURB.—£1,000 a year. Middle-class. Easily worked. Panel 2,200. Good corner house, garden; rent £35. Price £2,000.

- No. 6620. NORTH COUNTY.—£1,000 a year. Coast Town. Panel 890. Good house and garden. Recommended. Good schools.  
 " 6695. DURHAM.—£1,900 a year. Non-panel. Old-established. Held 27 years. Busy town.  
 " 6537. YORKSHIRE.—£1,000 a year. Panel 800. Old-established. Pleasant town. Hospital. Opposition light. Price £1,100.  
 " 6533. DERBYSHIRE.—£720 a year. Old-established. Good house and garden, lawn, &c. Panel 400. No conveyance needed.  
 \* " 6532. YORKSHIRE.—£1,600 a year. Increasing. Suburb of large city. Easily worked. Panel 1,100. Good house, large garden. Long introduction.

NOTE.—Practices marked with an asterisk have been personally investigated or visited by Mr. Turner.

Full details of any of the above and of many others for disposal not averted will be sent free on application to Mr. PERCIVAL TURNER as above.

SPECIAL NOTICE.—Mr. Percival Turner's Offices will be closed from Wednesday, December 24th, at 5 p.m., until Monday morning, December 29th. Urgent telegrams will be attended to at any time.