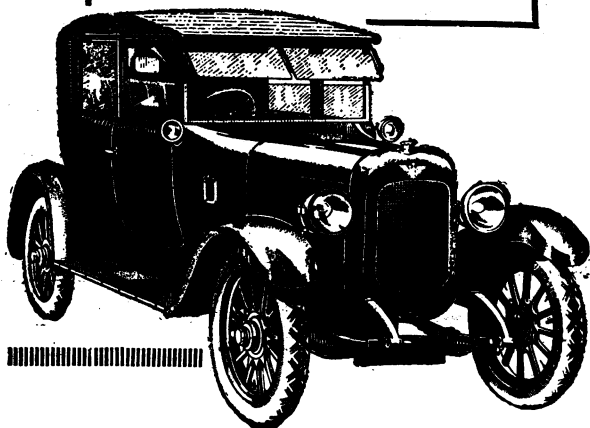


## Superiority is never accidental—

*It is true that the*

Payment by instalments can be arranged if desired. Write in first instance to Dept. H5.

**The AUSTIN MOTOR Co. Ltd.**  
Head Office: Northfield, BIRMINGHAM  
LONDON: 479-483, OXFORD ST., W. 1.  
MANCHESTER: 130, DEANSGATE  
And at BRUSSELS and LIANCOURT



*Austin*  
TWENTY  
COUPÉ MODEL

was designed with the professional man's requirements in mind; but it was not forgotten that the doctor-owner is a **keen motorist** as well as a medical man.

When you pay £850 for an Austin Coupé, you are paying a remarkably moderate price for a car which will do you credit from a motoring aspect as well as in professional activities.



*I'll be there in no time  
on my Douglas!*

THE 'phone rings: A night call!  
Your skill is needed at once.

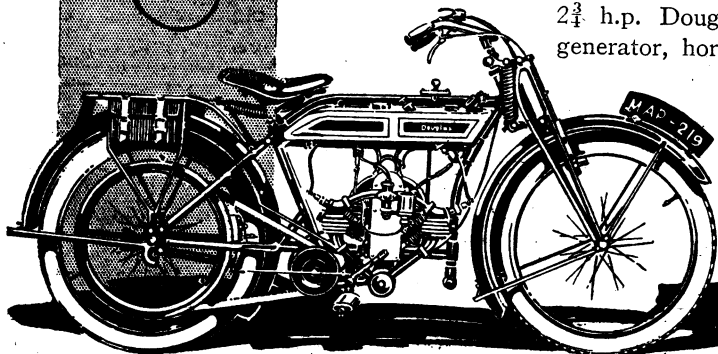
The car will take **some** starting up. . . . But if you own a Douglas Motor Cycle, the light-weight, speedy machine that is constantly piling up new honours for its makers, you can confidently rely upon getting out on

the road without a moment's delay or exertion.

Losing not a second in starting up, it travels with perfect security along by-roads that would be impassable to the average car, and is thus a particular boon to the doctor whose practice lies in scattered rural districts.

The price of the Race-tried, Medal-Winning 2-speed 2½ h.p. Douglas, fully-equipped with two lamps, generator, horn and licence holder, is only

**£85**



Our interesting booklet  
"NIGHT CALLS"  
and full specification of our various models, will be sent post free on application.

**DOUGLAS MOTORS Ltd.**  
39, Newman Street, London, W. 1.  
Works: Kingswood, Bristol.

MOTOR CYCLE  
MANUFACTURERS



BY APPOINTMENT  
TO H.M. THE KING