



# IMPORTANT



## LONDON MEDICAL EXHIBITION

CENTRAL HALL, WESTMINSTER, S.W.

MONDAY, OCTOBER 3rd to FRIDAY, OCTOBER 7th, 1921

12 noon to 6.30 p.m. daily

All the latest X-ray and Electro-Medical Apparatus will be seen on

### STAND No. 121

(LOWER HALL)

**The COX-CAVENDISH Electrical Co. Ltd.**

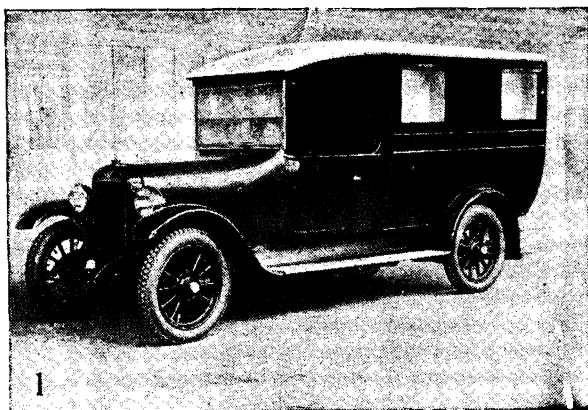
Twyford Abbey Works, Harlesden, London, N.W. 10

**LONDON — LEEDS — EDINBURGH**

## A New

# Austin

## Ambulance



Reproduced from "Commercial Motor."

A well-designed two-stretcher ambulance, incorporating a novel Stretcher Back Gear; sliding door between driver's seat and body, with collapsible seat for an attendant next to the driver. Roomy body, floor flush with side members of chassis, easily sterilised and cleaned, six ventilators and electric light, water tank, medical chest, wash-basin and collapsible seat.

TWO STRETCHERS, ENTRANCE RAILS AND HOISTING GEAR, white roof and interior. Olive green outside finish. All mounted on the famous AUSTIN CHASSIS.

**The AUSTIN MOTOR Co. Ltd.**  
 Head Office: Northfield, BIRMINGHAM  
 LONDON: 479-483, OXFORD ST., W. 1.  
 MANCHESTER: 130, DEANSGATE  
 And at LIANCOURT and BRUSSELS

As used at the AUSTIN Works.  
 Admirable for Municipalities.