

The "BRITISH MEDICAL JOURNAL" says:
 "Benger's Food has by its excellence established a reputation of its own."



Benger's Food is standardised by the Medical Profession for all illnesses involving or arising from weakness of the digestive system in Infants, Invalids and the Aged.

By means of Benger's Food, fresh cows' milk can safely be given even to the weakest stomachs. Benger's Food contains the active enzymes of natural digestion (*Amylopsin* and *Trypsin*), which act upon the casein of milk and the farinaceous material of the Food in such a manner as to render them easy assimilable.

The precise degree of digestibility of Benger's Food can be regulated by allowing the mixture to stand for a varying period at one stage of its preparation. A useful average period is 15 minutes, but in extreme cases, and with very young infants, this can be increased to 30 minutes or more.

NOTE.- COMPLETE PRE-DIGESTION OF BENGERS FOOD AND MILK IS NOT POSSIBLE. As health and natural digestion improve, the extent of the PARTIAL self-digestion of the Benger's Food and milk may be gradually reduced. The digestive organs can in this way be given a suitably-regulated exercise for steady progress to ordinary diet.

Benger's Food is itself of high food value, and with milk provides a complete food in the form of a delicate cream, rich in nutrition.

Medical Men may obtain full particulars of any of Benger's preparations post free on request.

BENGERS FOOD, Ltd., Otter Works, MANCHESTER.

Branch Offices: NEW YORK: 90, Beekman St.

SYDNEY: 117, Pitt St.



TRADE MARK

British Medical Journal

DECEMBER 31st, 1921.

CONTENTS.

ORIGINAL ARTICLES.

- A Post-Graduate Lecture on the Present Position of the Treatment of Carcinoma of the Cervix.** By WM. FLETCHER SHAW, M.D.1101
- The Radical Abdominal Operation for Carcinoma of the Cervix.** Results of One Hundred Cases. By VICTOR BONNEY, M.S., M.D., B.Sc., F.R.C.S.1103
- The Modern Operation for Cancer of the Breast.** By RUSSELL COOMBE, M.A., F.R.C.S.1106
- Gonorrhoea Treated by Electrolysis: Results in 500 Cases.** By CHARLES RUSS, M.B., M.R.C.S.1108
- The Treatment of Neglected Cases of Club-foot.** By W. PAYNTER NOALL, M.S., F.R.C.S. (Illustrated).1109
- Pigmentation of the Vermiform Appendix.** By E. M. COWELL, D.S.O., M.D., F.R.C.S.1111
- Thrombosis of the Inferior Vena Cava: with Special Reference to Prognosis.** By ROY RUSSELL KERR, M.B., F.R.C.S.1112

MEMORANDA.

- Common Changes in Erythrocytes.** By ROBERT CRAIK, M.D.1113
- A Case of Aneurysm of the Superficial Palmar Arch.** By E. O'G. KIRWAN, M.B., F.R.C.S.I., Major I.M.S.1113
- Varicocele in the Female.** By E. L. ROWSE, M.D.1114

REPORTS OF SOCIETIES.

- ROYAL SOCIETY OF MEDICINE:**
Treatment of Disfigurements Caused by Nasal Syphilis.1114
Amoebic Dysentery.1115
Ambulance Organization in War.1116

REVIEWS.

- Guy's Hospital Reports.**1116
The Ophthalmological Society.1116
Hypnotism.1117
Diseases of the Kidneys.1117
A Textbook of Gynaecology.1117
Physic and Fiction.1118
Notes on Books.1118

LEADING ARTICLES.

- EDUCATION OF THE DEAF CHILD.**1122
HEALTH OF THE ROYAL AIR FORCE.1122
INFLUENZA IN AMERICA.1123

THE WEEK.

- The Riviera Climate.**1124
Plague in South Africa.1125
Primary Malignant Tumours of the Haemolymph Glands.1125
Incidence of Aortic Aneurysm.1126
A Medical Stock-taking.1126
Western University Medical School.1126
Glasgow Medical Lunch Club.1126
The Fellowship of Medicine.1127
Lectures on Biometrics.1127
Phantom Editions.1127

GENERAL ARTICLES AND NEWS.

- HOSPITALS AND THE NATIONAL PROVIDENT SCHEME.**1119
MEDICINE IN ASSAM.1128
BETT FELLOWSHIPS.1121
MOTOR CARS: THE SPARE PART PROBLEM.1121
MEDICAL DEFENCE.1121
ROYAL MEDICAL BENEVOLENT FUND.1121
APPLIANCES AND PREPARATIONS.1119
MEDICAL NEWS.1137

LOCAL NEWS.

- ENGLAND AND WALES—**
Memorial to Dr. George Almond of Bath.1128
Liverpool School of Tropical Medicine.1129
Medical Treatment of School Children.1129
The Residential Treatment of Tuberculosis.1129
Fees of Medical Advisers in Tramway Accidents.1130

OBITUARY.

- Harry Littlewood, C.M.G., F.R.C.S.**1134
G. H. Darwin, M.B.E., M.D., F.R.C.P.1135
W. R. C. Middleton, M.D.1135
The late Dr. Gordon Sanders.1135
T. A. Chapman, L.R.C.S. Edin., F.R.S.1135
Matthew Owen Coleman, M.D.1136
James Donald, M.R.C.S.1136

CORRESPONDENCE.

- Cerebro spinal Fever and Meningococcus Types.** By Fred. Griffith, M.B., Ch.B.1130
Medical Aspects of Delinquency. By W. J. Tyson, M.D., F.R.C.P.1130
The Medical Practitioner and Procured Abortion. By W. H. Stirling Armstrong, M.B., Ch.B.1130
Loose Cartilage. By P. Jenner Verrall, M.B., F.R.C.S.1130
The Origin of the Anginal Syndrome. By Alexander Blackhall-Morison, M.D., F.R.C.P.1131
Hospitals in the Territorial Force.1131
Multiple Tooth Extraction. By Arthur M. Barford, M.D.; and John Fred. Briscoe, M.R.C.S.1132
Venereal Clinics: A Lay Point of View. By A. J. Brock, M.D.; and John Armstrong, L.R.C.P. and S. Edin.1132
Neuro induction. By Haydn Brown, L.R.C.P. and S. Edin.1132
The History of Brain Surgery. By James Craig, L.R.C.P. and S. Edin.; and John Horron Davies, M.D.1133
Clayden v. Wood-Hill: Third List of Subscribers to Fund. By Sir Hamilton A. Ballance, K.B.E., C.B., M.D.1133
- UNIVERSITIES AND COLLEGES.**
University of Cambridge.1136
University of London.1135
University of Manchester.1135
University of Leeds.1135
University of Dublin.1136
Royal College of Surgeons in Ireland.1137
Conjoint Board in Ireland.1137

LETTERS AND ANSWERS.

- Anaesthetics in General Practice.**1137
Income Tax.1137
Warnings.1138
"Surgical" Scarlet Fever.1138
The M.B. of the University of London.1138
Eye-strain and Reflex Neuroses.1138
Rheumatism and Bacon.1138
Rupture of Eyeball.1138
Destruction of Lice on Hair-clad Areas.1138


The SUPPLEMENT contains:—

The Dispensing Capitation Fee: The Case against Reduction.

CURRENT NOTES:

- Fee for Notification of Infectious Diseases.**
Fees for Examination of Emigrants.
A Part time Ophthalmic Surgeon.
Appointments, Diary, etc.

AN EPITOME OF CURRENT MEDICAL LITERATURE will be found at the end of the JOURNAL.



MOTOR CAR INSURANCE — MOTOR CYCLE INSURANCE

THE "WHITE CROSS"

POLICIES FOR DOCTORS

Approved by THE MEDICAL INSURANCE AGENCY.
Full particulars on request.

SPECIAL BENEFITS for

MEDICAL MEN ONLY.

THE SECRETARY, 429, Strand, W.C.

INDEX TO ADVERTISEMENT PAGES.

Advertisements are classified so far as date of receipt and printing conditions make possible. Advertisements of the following classes will for the most part be found on the pages indicated:—

UNIVERSITY, HOSPITAL, &c., VACANCIES—

Pp. 18 and 30-33.

ASSISTANTS, PRACTICES, &c.—

Pp. 29 and 30.

MASSEUSES—

P. 33.

MEDICAL SCHOOLS, &c.—

Pp. 26-28.

NURSING INSTITUTES—

Pp. 32-34.

SCHOOLS, &c.—

Pp. 23-28.

PUBLISHERS—

P. 1 of Cover, also pp. 2.

ASSURANCE COMPANIES—

P. 23.

BRASS NAME PLATES—

Pp. 2 and 23.

CHEMISTS, &c.—

P. iv of Cover, also pp. 2, 3, 8-18 and 23.

DISPENSING BOTTLES—

P. 23.

FOOD PREPARATIONS—

Pp. ii and iii of Cover, also pp. 8-18 and 23.

MOTORS, TYRES, Etc.—

Pp. 7 and 19-22.

MEDICAL AND SURGICAL APPLIANCES—

Pp. 3-7, 9 and 21.

SANATORIA & HOSPITAL BUILDINGS—

P. 9.

TAILORING & UNDERWEAR—

Pp. 4 and 11.

TYPEWRITERS & PENCILS—

P. 4.

BATHS, SPAS, &c.—

P. 23.

HEALTH RESORTS—

P. 25.

HOMES & ASYLUMS—

Pp. 23-25.

HYDROS—

P. 23.

INEBRIETY, &c.—

P. 24.

SANATORIA—

Pp. 25 and 26.

TUTORS & LECTURERS—

Pp. 26-28.

TRANSFER AGENTS—

Pp. 32-34.

MISCELLANEOUS—

Miscellaneous—P. 30.

* * It must be understood that the acceptance by the British Medical Association of an advertisement does not imply a recommendation, and that no responsibility is accepted with regard to the accuracy of the statements therein contained.

THE CLINICAL JOURNAL.

6d. A Weekly Record of CLINICAL MEDICINE and SURGERY. 6d.

Specimen Copy, with special leaflet giving list of recent and forthcoming contributions, post free on application.

ANNUAL SUBSCRIPTION (commencing at any date): 28s. 6d.; six months, 14s. 6d.; three months, 7s. 6d. post free.

London: H. K. LEWIS & CO. Ltd., 138 Gower Street, and 24 Gower Place, W.C. 1.

JUST OUT.

THE PREVENTION OF MALARIA

IN THE FEDERATED MALAY STATES. A RECORD OF TWENTY YEARS' PROGRESS

By MALCOLM WATSON, M.D., C.M., D.P.H., Chief Medical Officer, Estate Hospital's Association, Klang, F.M.S.

With Contributions by P. S. HUNTER, M.A., M.B.; A. R. WELLINGTON, M.R.C.S., L.R.C.P., and a Preface by Sir RONALD ROSS, K.C.B., K.C.M.G.

Second Edition, Revised and Enlarged. With Illustrations. 36s. net.

JOHN MURRAY, Albemarle Street, London, W. 1.

SECOND EDITION.

Crown 8vo. Pp. xiv + 402. Price 10s. 6d. net; postage 8d.

ADVANCED SUGGESTION: NEURO-INDUCTION.

By HAYDN BROWN, L.R.C.P., &c., Edin., Fellow of the Royal Society of Medicine.
"It is a wonderful book."—*Practitioner*.

BAILLIÈRE, TINDALL & COX
8, Henrietta Street, Covent Garden, London, W.C. 2.

RADIUM

Pure Radium Salts for Therapeutics produced and sold

in large or small quantities by

J. S. MACARTHUR, Ltd.,
RADIUM WORKS, BALLOCH.

STAMMERING,

CLEFT PALATE SPEECH, & LISPING.

By Mrs. BEHNKE,

Price 2s. 6d. net, postage 4d., of Miss BEHNKE, 39, Earl's Court Sq., S.W. 5, who receives Stammerers for treatment, and Singers and Speakers for Voice Training. References to Medical Practitioners.

"The method is scientifically correct, and perfectly effective."—*Guy's Hospital Gazette*.

TRANSLATIONS (MEDICAL AND SCIENTIFIC) from French and German.

Typewriting, Indexing, Secretarial & Research Work.
Miss ANNE NEWBOLD, 11, Tower House, Candover Street, W. 1. (near Middlesex Hospital).

THE PEPSODENT COMPANY,

Dept. 77, HOLBORN VIADUCT, E.C. 1.
will forward sample of their New Day Dentifrice, together with formula and scientific literature, on receipt of professional card.

SPECIAL OFFERS! Specially Manufactured WHITE GLAZED BOTTLE WRAPPER

5 Reams, 4/- per Ream | 10 Reams, 3/6 per Ream.
(8-oz. Bottle Wrapper. 500 sheets.)

4-oz. Wrappers (500 sheets) 6d. per Ream less above.

2-oz. do. do. 1s. do.

PROFESSIONAL ENVELOPES.

Good Quality ... 8/6 per 1000.

Foreign Postage extra. All Carriage Paid United Kingdom.

We make all kinds of Stationery for the Profession—Loose Leaf Ledgers, a/c Forms, Memos, etc.

HAMILTON'S Printers, BURNLEY.

BRASS NAME PLATES

Send for List 18a.

MEMORIAL TABLETS

Send for Book 18.

F. OSBORNE & CO. Ltd.,
27, EASTCASTLE ST., LONDON, W. 1.

The STANDARD HÆMATINIC.

"The employment of Bi-Palatinoids places the administration of exceedingly unstable compounds like ferrous carbonate, phosphate and arsenate, upon a sounder and more scientific basis."—THE LANCET.

"BI-PALATINOIDS"

(No. 500)

OF NASCENT FERROUS CARBONATE.

Sample and Literature on application.

OPPENHEIMER, SON & CO., LTD.,
179, Queen Victoria Street, London, E.C. 4.
Entirely British House since Foundation in 1891.

NEW PATTERN MODEL "S" COUCH

UNDERSLUNG TYPE

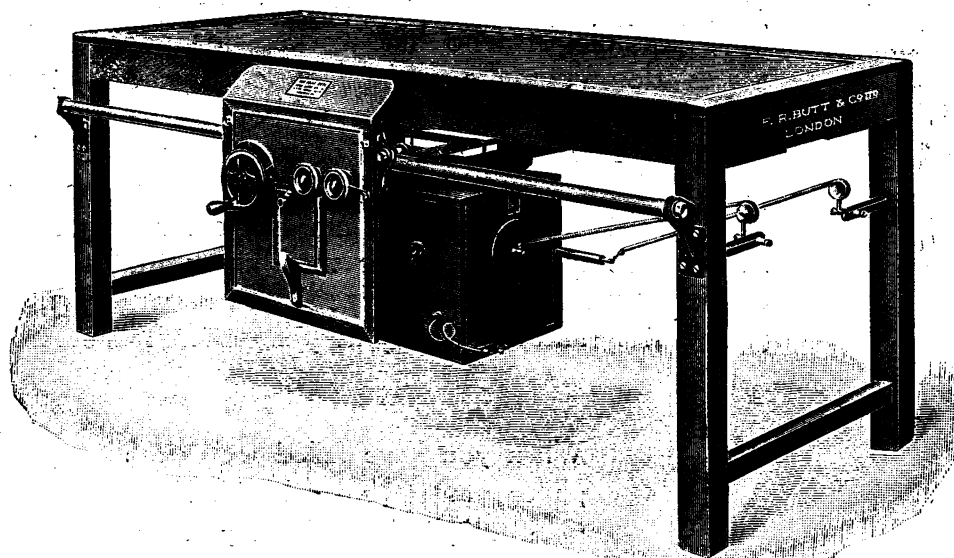
Transverse and longitudinal movements of tube box operated by one handle.

Tube quickly inserted and easily centred.

Tube can be regulated while working.

Complete protection.

No leakage with hard tubes.



Full particulars on application to the Sole Makers:

FRED^K. R. BUTT & CO. LTD.

(Incorporating the former X-ray and Electro-medical Department of SIEMENS BROTHERS & Co., Ltd.)

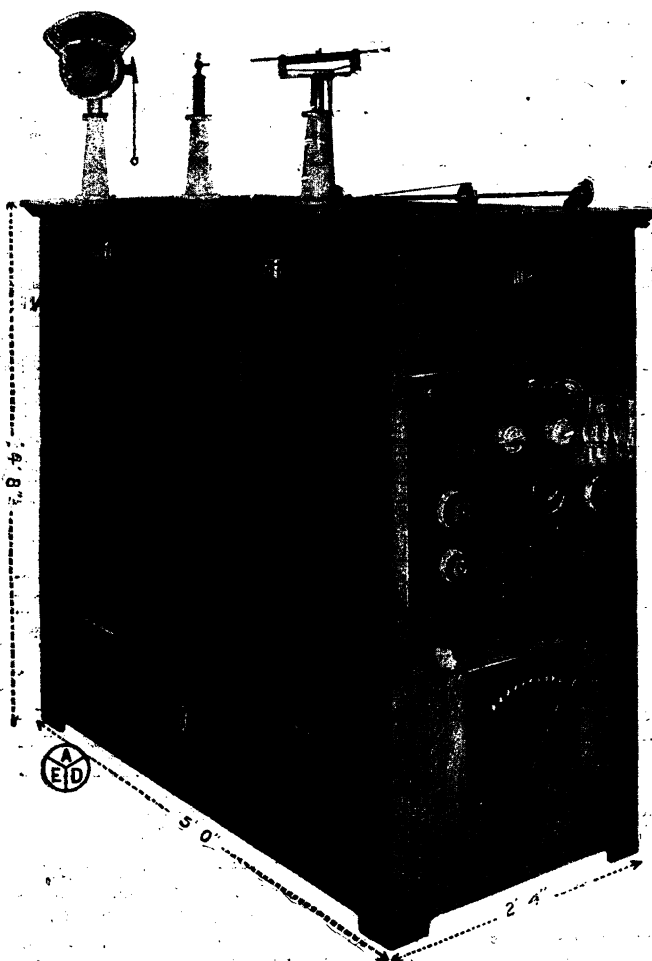
Manufacturers of the highest grade X-ray and Electro-medical Apparatus.

Contractors to the Admiralty, War Office, Indian Government, Crown Agents for the Colonies, Principal Hospitals, &c.

FACTORY, SHOWROOMS AND OFFICES:

DEVONSHIRE GROVE, OLD KENT ROAD, LONDON, S.E. 15.

Telephone: NEW CROSS 2147.



THE RADIOSTAT OIL-IMMERSED HIGH-TENSION TRANSFORMER

FOR COOLIDGE OR GAS TUBES.

Our Standard Model Radiostat is constructed in sizes up to 15 K.V.A. for either D.C. or A.C.

The model illustrated shows the Standard Type for A.C. mains with control for Coolidge or Gas Tubes. The unit is also supplied with a separate Switch-table Control.

Of our usual sound design and robust construction, with exceptionally high output.

For fuller particulars apply for leaflet (in preparation) to the Makers:

A. E. DEAN & CO.

Manufacturers of X-ray and Electro-medical Apparatus of the Highest Quality,

LEIGH PLACE, BROOKE STREET, HOLBORN, LONDON, E.C. 1.

The Radiologist who has worked for years with glass plates doesn't make a radical change and take up Eastman Dupli-Tized Film without a clearly defined reason. The great number of men who have taken up Dupli-Tized Film—and the list includes the leading Radiologists—realize that Film has set a new standard in negative quality. These men knew that they could do better work on Dupli-Tized Film than they could on glass plates—and that is why they made the radical change.

When you have failed with glass plates, you can succeed with Eastman Dupli-Tized X-Ray Film.

Kodak Ltd., (X-Rays Dept.), Kingsway, London, W.C. 2.



"NORVIC" CRÊPE BANDAGE

(REGD)

Elastic Stocking Bandages containing rubber, are superseded by
NORVIC CRÊPE BANDAGES,
Hygienic, Washable, Elastic, Rubberless.

OBTAINABLE FROM ALL DISTRIBUTORS.

Samples sent free to any medical man on receipt of a Postcard.

SOLE MANUFACTURERS—

GROUT & Co., Ltd. (Incorporating the Norwich Grape Co., (1856) Ltd.),
Bandage Manufacturers, GT. YARMOUTH.

"It makes life worth living."



PNEUMOSAN

(REG. TRADE MARK.)

is a powerful and valuable agent in the treatment of Tuberculosis; it is a homogenous chemical preparation applied by a series of intramuscular injections. Its action is alterative, devoid of subjective symptoms and **though used in thousands of cases never led to unpleasant or dangerous sequelae.** Afebrile or febrile cases alike yield readily to its influence if the prognosis offers any chance of recovery.

MED. SUPT. writes:—"I have given the preparation to some 50 cases. In no instance has any harm resulted, and no irritation has occurred at the site of the injection. In early and in advanced cases I had some striking results."—See LANCET, March 3rd, 1912, page 897. *Also* LANCET of 8th of Aug., 1914 (page 372), and 11th December, 1915 (page 1295).

Write for Literature.

SOLE MANUFACTURERS:

THE PNEUMOSAN COMPANY,
307, Euston Road, London, N.W. 1.
Telephone: MUSEUM 1101.

SECOND-HAND MICROSCOPES, &c.,

by all the leading makers.



CLARKSON'S
338, High Holborn,
LONDON, W.C. 1.
(Opposite Gray's Inn Road).
Telephone: Holborn 2112.

BURBERRYS 1922 SALE

Starts January 2nd.

The trade depression will prove beneficial to those who annually visit Burberrys during the Sale.
STOCKS OF GOODS
left on hand through the failure of the World's markets have been

BOLDLY WRITTEN DOWN
and Burberrys are LOWERING PRICES WITHOUT CONSIDERING COSTS.

Full Sale List, including Made-to-Measure Bargains, sent on request.

BURBERRYS Ltd., Haymarket S.W. 1 LONDON.

Scholl's Toe Flex



prevents and corrects bunions and crooked overlapping great toes. Worn comfortably in ordinary footwear.
Men's and Women's Sizes,
2/- each.

Booklet "Feet and Their Care" sent free on request.

The Scholl Mfg. Co., Ltd.,
1-4, Giltspur Street, London, E.C. 1.

TAYLOR'S TYPEWRITERS

SELL, HIRE,
HIRE PURCHASE,
EXCHANGE, BUY AND
REPAIR ALL MAKES
o. Typewriters and
Duplicators.

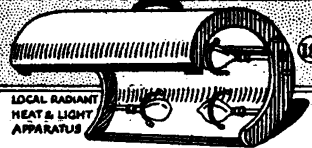
Desks, Tables and Chairs.
Write for Bargain List 53.
Est. 1884, (Holborn 4810).

Authors' MSS. and Lecture Notes Typed.
74, CHANCERY LANE (Holborn End, W.C. 2).

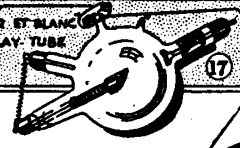


"THROW PHYSIC TO THE DOGS—I'll none of it."

ELECTRO THERAPY IS THE PROGRESSIVE SIDE OF MEDICINE.



LOCAL RADIANT HEAT & LIGHT APPARATUS



NO. 10 "VICTORY" HIGH-FREQUENCY AND DIATHERMY ATTACHMENT

ELECTRO-THERAPEUTICS

The largest X-ray & Electro Medical Showrooms in the United Kingdom.
Awarded Grand Prix last International Medical Congress.
SOME OF OUR MANUFACTURES.

CURRENT NET PRICES.

No. 1. The "Galvanoset" for ionisation, galvanisation, electrolysis, faradisation, muscle reaction testing, illumination of surgical lamps, Schnee four-cell bath treatment, &c., complete with oak pedestal, with nickel plated towel rails, and faradisation attachment, as illustrated ... **£21 11 0**
(Fully described in Catalogue No. 18.)

No. 2. Vibratory Massage Apparatus, very powerful, for direct connexion to the electric light holder, all voltages in stock, complete with selection of applicators and neat carrying case ... **£7 3 0**
(Fully described in Massage Catalogue.)

No. 3. Hot and Cold Air Douche, for radiant heat applications, &c. Motor driven for direct connexion to the electric light holder. All voltages in stock ... **£5 15 6**
(Fully described in Massage Catalogue.)

No. 4. Hand Lamp for radiant heat and light applications to any part of the body, light and portable and fitted with parabolic reflector ... **£2 11 0**
(Fully described in Catalogue No. 17.)

No. 5. The "Limpet" Universal Electrode Outfit enables you to make your own electrodes any size and shape required, and, by means of aseptic rubber bolts the electrode is held in perfect apposition with the patient. Complete outfit ... **£2 18 10**
(Fully described in Catalogue No. 19.)

No. 6. "Safety" X-ray Tube Rack for the safe and convenient storage of X-ray tubes in X-ray departments. ... **£2 6 6**
(Fully described in Catalogue No. 5.)

No. 7. The New "Physio" Faradic Wave Apparatus for surging or interrupted currents. The apparatus is arranged so that the current can be supplied in impulses varying between 60 and 3,000 stimulations per minute, four separate secondary windings. Price complete as illustrated ... **£9 10 6**
(Fully described in Catalogue No. 16.)

No. 8. Diathermy Apparatus, latest type, very powerful for surgical or medical use, complete with coal gas spark gap, and milliamperage meter to 3,000 M.A. ... **£31 0 0**
(Fully described in Catalogue No. 7.)

No. 9. High Speed Static Electrical Machine, 12 plate size, complete with motor ... **£118 0 0**
(Fully described in Catalogue No. 1.)

No. 10. "Victory" High-Frequency and Diathermy Attachment for obtaining the above currents from the induction coil as used in X-ray work, complete with milliamperage meter, reading to 3,000 M.A. ... **£34 4 0**
(Fully described in Catalogue No. 8.)

No. 11. Spamer Faradic Battery, No. E.D. 2. Superior finish, complete with cords, handles, and electrodes, in mahogany case ... **£3 9 0**
(Fully described in Catalogue No. 15.)

No. 12. The "Clinic" Galvanic and Foradic Switch Table for connexion to the electric light main. All fittings are mounted on white marble, and include our new "Physio" Faradic Wave Apparatus, metronome interrupter, &c., as supplied by us to the Ministry of Pensions, British Red Cross Society, &c. Price complete ... **£36 0 0**
(Fully described in Catalogue No. 15.)

No. 13. Professor Bergonie's Apparatus for the treatment of obesity, and for all conditions arising from deficient elimination. Undoubtedly the "Doyen" of electro-medical treatments. Price of the complete outfit ... **£153 0 0**
(Fully described in Bergonie Catalogue.)

No. 14. Reclining Model Electric Radiant Heat and Light Bath, panelled white enamelled sides, folding doors, and polished teak top rail, reclining couch, &c. ... **£61 4 0**
(Fully described in Catalogue No. 17.)

No. 15. The "Ideal" Installation for radiography, radiotherapy, high frequency and diathermy. Fitted with 12 in. spark intensified induction transformer ... **£137 18 6**
(Fully described in Catalogue No. 6.)

No. 16. The Universal Radiant Heat and Light Apparatus for the treatment of any part of the body. Fitted with 2,000 candle power heat and light unit, supporting bracket, counterweight, &c. ... **£27 0 0**
(Fully described in Catalogue No. 17.)

No. 17. The "Noir et Blanc" X-ray Tubes. The most perfect tube for radiography, fitted with tungsten anode in heavy copper mounting for withstanding heavy discharges ... **£11 0 0**
(Fully described in Catalogue No. 5.)

No. 18. Radiant Heat and Light Baths for local application. Covered polished aluminium, fitted with six lamps, switch, and leather strap handle, light in weight ... **£9 18 0**
(Fully described in Catalogue No. 17.)

MEDICAL SUPPLY ASSOCIATION LTD.

Electro-Medical Instrument Manufacturers,
167-173, GRAY'S INN RD., LONDON, W.C.1.

SALT & SON, LTD.

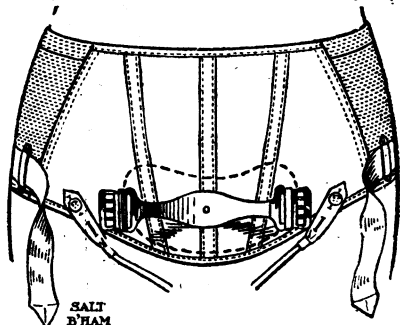
(Head Offices): **7, CHERRY STREET, BIRMINGHAM.**

Orthopaedic Appliance Specialists. Artificial Limb Manufacturers.

SALT'S GASTROPTOSIS BELT

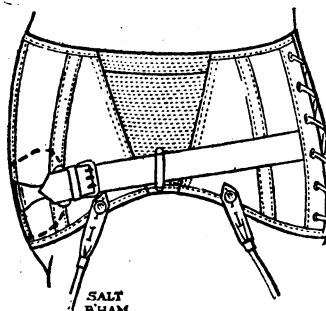
as designed for JOHN F. HALL-EDWARDS, Major (late R.A.M.C.), L.R.C.P. Edin., D.M.R. & E. Cantab., F.R.S. Edin.

LONDON CONSULTING ROOMS:
14-18, BLOOMSBURY ST.
W.C. Museum 3845
 Fully qualified Nurse in attendance.
BY APPOINTMENT ONLY.



SALT'S HAM

Front View.



SALT'S HAM

Side View.

Write for Particulars and Measurement Forms.

Extract from article "The Diagnosis and Treatment of Gastroptosis," by Major HALL-EDWARDS, in *B.M.J.*, May 14, 1921:—"By far the most important item in the treatment is the special abdominal belt for holding the stomach up."

Reprint of article sent on request.

SEND FOR PARTICULARS OF—

SALT'S REGISTERED ENTEROPTOSIS CORSET.

SALT'S PATENT VARUS BOOT.

SALT'S PATENT KIDNEY BELT, &c., &c.

The "BARTON" SPHYGMOMANOMETER

possesses the great advantage of being a very active and reliable instrument, extremely light and portable, and always ready for use, those absolute essentials for the apparatus of a busy Medical Practitioner.

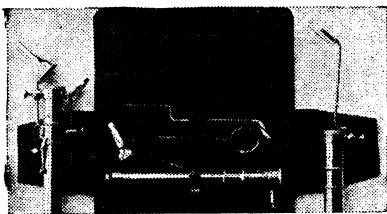
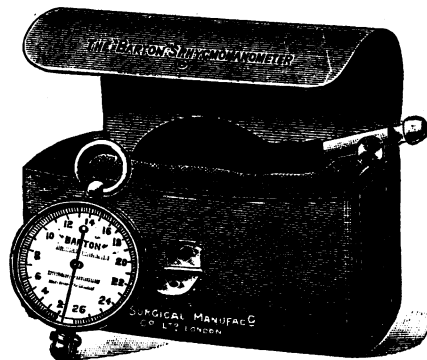
Will be sent on 14 days' approbation to any member of the Profession on application.

Price **£4 4 0.**

The Surgical Manufacturing Co., Ltd.,

SURGICAL INSTRUMENT MAKERS to the WAR OFFICE, &c.

83-85, MORTIMER STREET, LONDON, W.1.



Price 21/-, Postage 3d.

(DEES) AURORASCOPE (REG. PATENT).

The G.P. POCKET THROAT AND EAR OUTFIT.

A NOVICE can see at the bedside, in daylight, the Vocal Cords, Drum of the Ear, Optic Disc, Transillumination of the Antrum and Sinuses, and everything in the range of Rhinology, Ophthalmology, Laryngology, and Aural Surgery. Certified correct by Specialists and Leaders of the Profession.

PRICES: Best Quality Outfit in Silk lined Case or Leather Wallet with Spherical Lens Attachment complete and recommended, **£22 2 0.** Registered Post 9d.

Second Quality, without Magnifying Lens Attachment, **£11 1 0.** Reg. Post, 6d.

Adapter, Flex Wire (Conversion), including Special Battery for four hours' permanent lighting, **12 6.**

AURORASCOPE CO., LTD., Fulwood House, Fulwood Place, Holborn, W.C. 1
 (next to Chancery Lane Tube Station) where demonstrations are given daily.
STOCKED BY ALL SURGICAL INSTRUMENT MAKERS.

EMINENT MEDICAL MEN

say that rigid foot plates are injurious, and are prescribing for Tired Feet and Weak Insteps

THE SALMON ODY Spiral Spring Adjustable ARCH SUPPORT

Made by **SALMON ODY, LTD., 7, New Oxford St., LONDON, W.C. 1.**
 (ESTABLISHED 120 YEARS.)

WRITE FOR DESCRIPTIVE CIRCULAR.

British Made
 Throughout.



W. H. BAILEY & SON



THE NEW PATENT REVOLVING STETHOSCOPE

THIS Instrument combines all the best points of the modern Stethoscope with several outstanding advantages of its own.

The tubes are fitted with external plugs; thus the lumen is the same throughout, forming an uninterrupted sound-channel.

The chestpiece is fitted with both phonendoscopic end for general use, and with small ebony mount, for intercostal spaces.

Price, **18/6**



IMPROVED BINAURAL STETHOSCOPES

WITH
SKINNER'S
CHESTPIECE
AND SPECIAL
PHONENDOSCOPE
END

Price **16/6**



IMPROVED STETHONO- SCOPE

The Best Instrument for Auscultation.

A Great Advantage over all forms of Binaural Stethoscope.

Price,
Stethonoscope,
only, **15/-**

Complete with
Stout Rubber
Tubes & Folding
Head-spring
24/-

Any of these sent on approval to any Registered Practitioner in the United Kingdom.

Surgical Instruments and Appliances -

Hospital and Invalid Furniture -

Telegrams: "Bayleaf, London."

38, OXFORD STREET,

2, RATHBONE PLACE,

LONDON, W. 1.

Telephone: Museum 1481.

GAS FIRE SCIENCE



THE fundamental principles of gas fire construction to-day are: first, that the great proportion of the heat emitted shall be radiant, and therefore healthful, like that of the sun; second, that none of the products of combustion shall be allowed to enter the room, but, by reason of their "pull" up the chimney flue, shall keep the air in the condition of gentle motion necessary for health and comfort.

That is why medical and other scientists recommend the modern gas fire as a hygienic piece of apparatus.

Further information and Reports of Tests can be obtained from

THE BRITISH COMMERCIAL GAS ASSOCIATION

30 Grosvenor Gardens, S.W.1

1C33

**An Offer to Medical
Men desiring New Cars.**

£100 down ensures immediate delivery of any leading make of car not exceeding £1,000 in value—the balance to be paid by agreed instalments.

Send full particulars, make and type of car required.

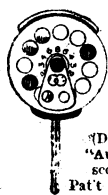
Mr. J. C. NEEDES,

Medical Partnership and
Conveyancing Agency.

8, DUKE STREET, ADELPHI, LONDON, W.C. 2.

Tel.: "Acquirement, Strand, London."

Tel.: Gerrard 3543



(Dees)
"Aurora-
scope"
Pat. Fundus



(Dees) FUNDUS "AURORASCOPE" ATTACHMENT.

"PATENT"

We absolutely guarantee that a novice can see every detail of the Retina.

PRICE: "Fundus" Attachment, **£2 : 2 : 0** (postage 6d.).

Fundus "Auroroscope," Complete, **£3 : 3 : 0**

(postage 6d.). Model Practice Eye—with the use of which Students can easily become proficient in Ophthalmoscopy, Retinoscopy, and Sight-Testing—Price **12/6** (postage 6d.).

The "AURORASCOPE" CO., Ltd., Fulwood House, Fulwood Place, High Holborn, W.C. 1.

(side Chancery Lane Tube station)

WHERE DEMONSTRATIONS ARE GIVEN DAILY.

Attachment | Attachment in situ.

Valentine's Meat-Juice

In Phthisis, Pneumonia, Influenza and other Wasting, Acute or Febrile Diseases, When Other Food Fails and it is Essential to Aid the Digestion and Sustain the Exhausted Patient, Valentine's Meat-Juice demonstrates its Ease of Assimilation and Power to Restore and Strengthen.

"For a Tired Stomach."

Physicians are invited to send for Clinical Reports.

For sale by European and American Chemists and Druggists.

VALENTINE'S MEAT-JUICE COMPANY,

Richmond, Virginia, U. S. A.

B 150



Vitamines

Biological experiments conducted in a prominent research laboratory have proved the presence of the Three Principal Vitamines

IN VITMAR

Manufactured only by

CALLARD & CO., Food Specialists, 74, Regent St., London, W. 1.

ORGANOTHERAPY.

The ideal form for the administration of all animal extracts is the

'PALATINOID'

*Hermetically Sealed. Contents Uncompressed.
Perfect Sterility. Certainty of Assimilation.*

Samples and Literature—

OPPENHEIMER, SON & CO., Ltd., 179, Queen Victoria St., London E.C. 4.

Cerebrin
Fol Bovinum
Fol Porci
Gangloid Comp.
Mammary
Marrow, Red Bone
Nuco-gangloid
Nuclolid
Oolithia
Ovarian
Pancreas
Pancreatin
Pepsin
Pituitary
Suprarenal
Tetraglandin
Thymus
Thyro-gangloid
Thyro-nuclolid
Thyrocol
Thyroid



DOCTOR! Fresh air For Your Patients

B. & P. Revolving Shelters enable the most delicate patient to take the utmost advantage of fresh air and sunshine, whilst strong and cold winds - - are excluded. - -

Write at once for full particulars of B. & P. Revolving Shelter No. B451.

Boulton & Paul Ltd.

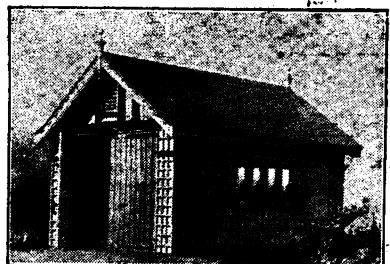
HEAD OFFICE & WORKS, NORWICH,
LONDON ADDRESS:
135-137, QUEEN VICTORIA STREET, E.C.4.

For Doctors who are Motorists

THIS sturdy B. & P. Motor House has been specially designed on approved lines to meet the requirements of Local Authorities in Town and Sub-urban Districts. - -

FIRE-RESISTING & WEATHERPROOF
It is covered with fireproof material. We will undertake to supply and erect on concrete floor for a moderate and inclusive price. Most sizes are in stock.

"Solving a Motor Problem"
is our latest Catalogue of Motor Houses and Accessories. Write for a copy which we will send free of charge. - -



LISTERINE

A Non-Poisonous, Unirritating Antiseptic Solution.

Agreeable and satisfactory alike to the Patient, the Physician, the Surgeon and the Nurse. Listerine has a wide field of usefulness, and its unvarying quality assures like results under like conditions.

Listerine is a saturated solution of boric acid and volatile antiseptic oils, miscible with water in any proportion without precipitation or separation of its constituents. It is successfully prescribed

As a wash and dressing for wounds;

As a gargle, spray or douche;

As a deodorant and antiseptic lotion;

As an antizymotic in disorders of digestion.

Operative and accidental wounds heal rapidly under the Listerine dressing, as it does not destroy tissue cells or retard the natural processes of repair.

In catarrhal and inflammatory conditions of mucous surfaces, Listerine is dependably antiseptic and also forms an excellent vehicle for applying other especially indicated medicaments.

Topical antiseptic medication is conveniently provided by the application of Listerine. It is sometimes used in full strength by atomization in treating various forms of dermatitis, extending over large surfaces.

In disorders of digestion, notably choleraic diarrhoeas occurring in infants and children, Listerine forms the basic ingredient of many prescriptions.

Lambert Pharmacal Company,

St. Louis, Mo., U.S.A.

British Agents:

S. Maw, Son & Sons, Ltd., 7-12, Aldersgate Street, London, E.C. 1.

FOR STUDENTS.

WATSON'S MICROSCOPES.

FOR BACTERIOLOGY.



Watson's
"Service" Model.

WATSON'S BRITISH-MADE MICROSCOPES are the BEST for STUDENT'S USE, BLOOD WORK and RESEARCH.

Catalogues sent on application to
W. WATSON & SONS, Ltd.,
313, HIGH HOLBORN, LONDON, W.C. 1.

ESTABLISHED 1837.

Works: Bells Hill, High Barnet.



Watson's
"H. Edinburgh Student's."



Elixir of Enzymes

"ARMOUR."



ELIXIR ENZYMES is a palatable preparation of the proteolytic and curdling ferments that act in acid medium. It is recommended as an aid to digestion and as a gastric tonic generally.

Elixir of Enzymes is of special service in correcting faulty proteid metabolism which is one of the principal causes of auto-intoxication.

Elixir of Enzymes is an excellent adjuvant and vehicle for exhibiting iodides, bromides, salicylates, and other drugs that disturb the digestive functions. One drachm of Elixir Enzymes will carry 46 grains of potassium iodide or 45 grains of sodium salicylate or 17 grains of potassium bromide.

For minimizing the organic disturbances and eliminating the corrosive effect of potassium iodide on the mucous membrane of the stomach as well as disguising the taste, the following combination is recommended: Potassium Iodide, 2 ounces. Distilled water, enough to make 2 fluid ounces.

To exhibit, for instance, 20 grains of potassium iodide three times daily, use one teaspoonful of Elixir of Enzymes, one teaspoonful of the above solution to half pint of lukewarm milk; stir thoroughly and let stand until cool. Take one-third of this quantity as a dose. This junket should be made up fresh every morning.

Elixir of Enzymes will prove very beneficial in general digestive disturbances especially at this season.

Supplied in 8 oz. and 16 oz. bottles.

Samples and Literature sent to Medical Men on application.

ARMOUR AND COMPANY
LIMITED

QUEEN'S HOUSE, KINGSWAY
LONDON, W.C. 2.

Telegrams: "Armorum—Westcent, London."

Telephone: Holborn 5900.



MAGISAL

Crush a MAGISAL TABLET (Martindale's Magical Aspirin) and stir it in a teaspoonful or two of water. It dissolves completely.

Do the same with an Aspirin Tablet (anybody's make) and note that it does not dissolve, or to be precise, a minute proportion of it only dissolves.

The solubility of MAGISAL is 1 in 12; that of Aspirin 1 in 500. For prompt effect as an anti-rheumatic, anti-neuralgic, and influenza remedy, please prescribe MAGISAL.

Bottles of 50 Tablets - - 2/6.

W. MARTINDALE, 10, New Cavendish Street, W. 1.

Telephone: LANGEHAM 2440 & 2441.

'INCITAMIN'

of Professor J. J. FISCHER of COPENHAGEN.

(See LANCET October 29th, 1921—p. 993.)

STIMULATING.—SOOTHING.—HEALING.

Indicated in the case of ULCERS, both RODENT and INDOLENT.

Per 4 oz. Bottle 7/6

OPPENHEIMER, SON & CO., Ltd., 179, Queen Victoria Street, London, E.C. 4.



There's Nothing to Equal it for Real Comfort.

Jaeger Camelhair Dressing-gowns have won the hearts of young and old alike, by their lightness and the cosy comfort for which they are unequalled.

JAEGER CAMELHAIR GOWN—ON 37
(as illustrate:)

From 7 Guineas.

JAEGER
Pure Camelhair

LONDON DEPOTS:

126, Regent Street, W. 1.	102, Kensington High St., W. 8.
456, Strand, W.C. 2.	131a, Victoria Street, S.W. 1.
30, Sloane Street, S.W. 1.	85 and 86, Cheapside, E.C. 2.

Jaeger Agents in every town and throughout the British Empire.

"REGULIN"

British Patent No. 19311.
For **CHRONIC CONSTIPATION.**

A natural remedy for regulating the bowels. It acts chiefly within the intestine, is tasteless, and does not affect the stomach.

IT IS NOT A CATHARTIC.

Regulin is not advertised to the general public, but only in medical papers, and its large sale is entirely due to its prescription by Physicians.

Boxes containing about 1 oz. 1/3, 3 oz. 3/4, 6 oz. 5/8. **FROM ALL CHEMISTS.**

THE REGULIN SYNDICATE, Ltd., 14, Philpot Lane, E.C. 3.
Telephone: No. 8893 LONDON WALL.

KOLYNOS DENTAL CREAM

MADE IN ENGLAND.

**KOLYNOS AND THE
SALIVA**

¶ The purpose of Kolynos Dental Cream is to clean the teeth and soft tissues of the oral cavity thoroughly, thus producing Sanitation of the Mouth. In accomplishing this Kolynos does not interfere with the normal action of the saliva.

¶ On request a report on "Kolynos and the Saliva," together with a professional package of Kolynos Dental Cream, will be forwarded to you free of charge.

Kolynos Incorporated,
156-157, Aldersgate Street, London, E.C. 1.

KOND'S EUONYMISED COCOA.

A delicious Beverage, taking the place of Tea, Cocoa, or Coffee.

Euonymin taken is a hot infusion as incomparably more direct than in any other form.

Recent Testimonial.—"30 years ago your Cocoa cured me of Stomach and Liver troubles and Constipation and still keeps me right." E.G., December, 1919.

SOLD IN TINS 1s. 6d. & 2s. 6d.

from Grocers or Chemists;
or from the Wholesale Depôts;

MAY, ROBERTS & CO., LTD.,
9, Clerkenwell Road, LONDON, E.C.

Alopecia prematura ... Pomade Max Alopecia prematura ... Pomade Max

Loss of Hair, no matter from what cause arising, should be perseveringly treated with **POMADE MAX**. Apparently hopeless cases receive marked benefit generally almost immediately.

POMADE MAX

(UKC, CANTHARIDIN & HYDRARC. CO.)

For Alopecia Prematura & Alopecia Areata

A dermatologist writes:—

"Without stretching language in the least we may say that it really appears to be a *specific* for baldness."

An L.R.C.P., Harrogate, writes Sept. 1915:—

"Send me Pomade Max for own use."

"A Patient (syphilis) has used it with wonderful results."

MAY, ROBERTS & CO., LTD.,
9 & 11, Clerkenwell Road, E.C.

KEROL

KEROL combines all the properties which go to the making of an ideal preparation. It has been shown to be practically non-toxic, non-irritant and non-corrosive—a combination of properties which make it the one preparation which can be used with perfect confidence wherever the use of either a disinfectant or antiseptic is indicated. It is of high and definite germicidal value and is perfectly homogeneous.

KEROL is highly recommended by Bacteriologists and by prominent members of the Medical Profession.

KEROL CAPSULES.

INTESTINAL. These are of great value where intestinal antiseptics is indicated. In a comparatively short space of time the coli content of the intestine is reduced by over 99 per cent. They are non-irritant and perfectly safe.

STOMACHIC. For use in cases of stomach fermentation and other gastric troubles, and are of great value in reducing the number of malign organisms prior to administration of treatment with lactic ferments, i.e. sour milk, etc.

Samples and literature sent free to any Medical Practitioner.

KEROL Ltd.,
(Successors to Quibell Bros. Ltd.)
151, Castlegate, NEWARK.



In the treatment of Tuberculosis, it is indispensable to increase the tone of the system, and the functioning ability of the organs of circulation, assimilation, and elimination

FELLOWS' SYRUP of the HYPOPHOSPHITES,

"The Standard Tonic for over fifty years,"

contains mineral foods and stimulating agents which make it an ideal preparation for the dietetic and constitutional therapy of Tuberculosis.

Samples and Literature sent upon request.

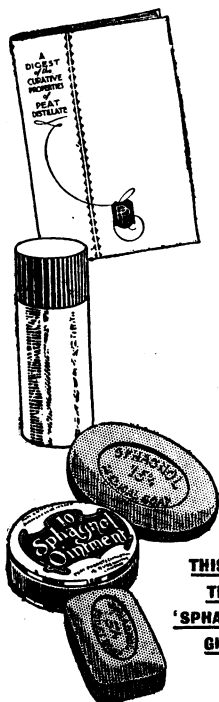
FELLOWS MEDICAL MANUFACTURING CO., Inc.

26 Christopher Street,

New York, N. Y., U.S.A.



Free to Doctors only.



THIS IS
THE
'SPHAGNOL'
GIFT

A DOCTOR writes:—

"I have tried your preparations of Sphagnol and can testify to their excellence. I used the Ointment in a case of chilblains with most excellent effect after the usual remedies had failed. They are also very useful in Acne Vulgaris. I used the Soap and Shaving Soap myself, and consider them far the best I have ever used. They give a splendid lather which does not dry up quickly, and is very soothing to delicate skins."

SPHAGNOL Samples, value over 3/6, is the offer we make to any doctor who will forward his address to us.

Medical men have proved that Sphagnol, which is prepared from a distillate of peat, and has been awarded the certificate of the Institute of Hygiene, is the one natural remedy for Eczema, Hæmorrhoids, Acne, Psoriasis, Pruritus, Scabies, and all Skin Diseases. We are anxious to give every Doctor an opportunity of trying these healing properties for himself.

Just send a postcard asking for Samples D 12, or fill in coupon below. Samples will be sent you by return.

Sphagnol

ASK FOR Sphagnol

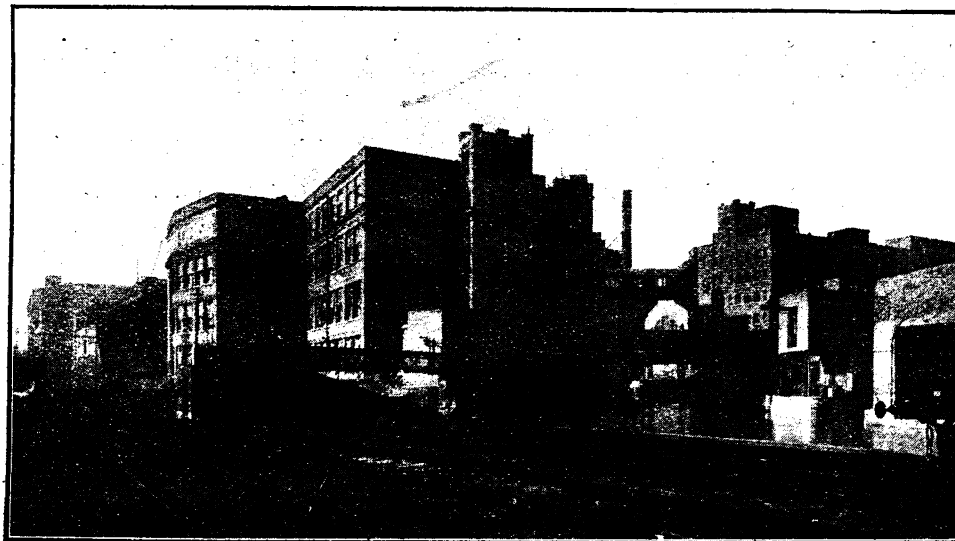
CUT OUT THIS COUPON AND SEND IT NOW

To **PEAT PRODUCTS (SPHAGNOL) LTD.**, 18/19, Queenhithe, London, E.C.4.

Please send me Samples for professional use.

Name (Dr.).....

Address.....



Flavine Antiseptics

ACRIFLAVINE—BOOTS □ PROFLAVINE—BOOTS

1917 "A powerful antiseptic, most active in the presence of serum."

"Toxic to organisms, harmless to tissues."

BRITISH MEDICAL JOURNAL, Jan. 20/17, pp. 73-80.

1919 "Lavation with Acriflavine the most satisfactory routine treatment for gonorrhœa."

BRITISH MEDICAL JOURNAL, May 17/19, pp. 571-572.

1921 "Possess much more bactericidal action in comparison with their toxicity for tissue than any other substances hitherto investigated."

"Similar value attached to their use in gonorrhœa."

BRITISH MEDICAL JOURNAL, Oct. 17/21, pp. 695-699.

Literature sent to Medical Men on application.

BOOTS PURE DRUG CO. LTD.

*Manufacturing Chemists and
Makers of Fine Chemicals,*

NOTTINGHAM.

Telephone: 3160 NOTTINGHAM.

Telegrams: "DRUG. NOTTINGHAM."

PIONEERS AND EMPIRE BUILDERS: No. 155
FIFTH PERIOD—circa 6000 to 2000 B.C.

Reliable Hypodermic Medication

TRADE MARK 'HYPOLOID' BRAND

Products

Present fluid medicaments of exceptional purity and accuracy of dosage ready for immediate use.

Issued in hermetically-sealed containers of specially-tested, neutral, hard glass.

To use, the neck of the phial is broken off and the sterile medicament drawn straight into the syringe.

A wide range is issued, amongst which are the following:—

'HYPOLOID' Brand—

'Epinine'
" 'Ernutin'
" 'Infundin.'
" Adrenalin

'HYPOLOID' Brand—

Atropine Sulphate
" Cocaine Hydrochloride
" Morphine Hydrochloride
" Scopolamine Hydrobromide

For full list, see Wellcome's Medical Diary



BURROUGHS WELLCOME & CO., LONDON

NEW YORK MONTREAL SYDNEY CAPE TOWN MILAN
SHANGHAI BUENOS AIRES BOMBAY

All communications intended for the Head Office should be addressed to
SNOW HILL BUILDINGS, LONDON, E.C. 1

London Exhibition Room: 54, Wigmore Street, W.

TEXT OF THE LAW RELATING TO SURGEONS AND PHYSICIANS IN THE OLDEST CODE KNOWN.—The pioneer legislators of ancient Babylonia made clear and definite laws with regard to physicians' fees and liabilities. Articles 215 to 223 run thus: "If a physician has treated a man, with a bronze lancet, for a grave injury, and has cured him, or has opened the cataract of a man with a bronze lancet, and has cured the eye, he shall receive ten shekels of silver."—"If it was the son of a poor man, he shall receive five shekels of silver."—"If it was the slave of a free man, the owner of the slave shall pay two shekels of silver."—"If a physician has treated a man for a grave injury, with a bronze lancet, and has caused him to die, or has opened the cataract of a man with a bronze lancet, and has destroyed the eye of a man, they shall cut off his hands."—"If a physician has treated the slave of a poor man, for a grave injury, with a bronze lancet, and has caused him to die, slave for slave he shall render."—"If he has opened his cataract with a bronze lancet and has destroyed his eye, the physician shall pay half his price in silver."—"If the physician has cured the broken limb of a man, or has restored to health a diseased part, the patient shall pay to the physician five shekels of silver."—"If it be the son of a poor man, he shall pay three shekels of silver."—"If it was the slave of a free man, the owner of the slave shall pay two shekels of silver."

Date: c. 2100 B.C.

COPYRIGHT

PIONEER AND EMPIRE BUILDERS. No. 156

FIFTH PERIOD—circa 6000 to 2000 B.C.

To overcome the uncertainty
associated with *Aspirin*, prescribe

TRADE MARK 'TABLOID' BRAND
Aspirin

You then ensure that your patient will receive products manufactured from acetylsalicylic acid of the highest possible purity, free from salicylic or acetic acid and having the correct melting point of the pure acid.

'TABLOID' ASPIRIN is free from boric acid, talc and any objectionable admixture, and contains no chemical designed to mask the B.P. ferric chloride test.

Each product contains the full stated weight of the pure medicament.



Reduced facsimile

'TABLOID' ASPIRIN, gr. 5

Issued to the Medical Profession, in bottles of 25 and 100, at 10d. and 2/6 per bottle

Also 'TABLOID' ASPIRIN, 0.5 gm.

Issued to the Medical Profession, in bottles of 25 and 100, at 1/3 and 2/9 per bottle



BURROUGHS WELLCOME & CO., LONDON

NEW YORK MONTREAL SYDNEY CAPE TOWN MILAN
SHANGHAI BUENOS AIRES BOMBAY

All communications intended for the Head Office should be addressed to SNOW HILL BUILDINGS, LONDON, E.C. 1

London Exhibition Room: 54, Wigmore Street, W.



HAMMURABI, THE EARLIEST KNOWN GREAT ORGANISER AND EMPIRE BUILDER IN HISTORY, RECEIVING THE LAWS FROM THE SUN-GOD.—Hammurabi (or Khammurabi) was the sixth and greatest king of the great First Dynasty of Babylon. The princes of this house were Semitic foreigners from Syria, who for 1000 years had known and assimilated Mesopotamian civilisation. They invaded and possessed themselves of Babylon, then a very unimportant town. They developed it until it became the chief city of the East; it became—and remained throughout ancient history—the capital of Mesopotamia. Hammurabi's empire grew by conquest until it reached to Armenia and Palestine. The king codified the laws and made them known and obeyed throughout the land, thus welding and consolidating his empire. The prologue to the laws inscribed upon the stele, the upper portion of which is here reproduced, reads: "I, Hammurabi, believing in my god and called by him to create justice in the land, to destroy the wicked and perverse, so that the strong should not oppress the weak, like the sun to appear and enlighten mankind." "Right and Justice in the land I initiated and brought about the happiness of the people." The laws are then set out. The stele was erected in order that every injured person might come and read for himself—or get someone to read for him—the law as it applied to his case.

Date: 2100 B.C.

COPYRIGHT

A Volume of clinical evidence —

39	Crookes'		40
"British Medical Journal"	Jan. 16, 1915	Collosol Argentum in Ophthalmia.	
Ibid	May 12, 1917	Therapeutic effects of Collosols.	
Ibid	Dec. 15, 1917	Collosol Argentum and Iodine in Ménière's Symptoms.	
Ibid	Apr. 5, 1919	Manganese in Gonorrhoeal Ophthalmia.	
Ibid	Aug. 7, 1920	Collosol Sulphur, Mercury and Iodine in Syphilis.	
Ibid	June 4, 1921	Collosol Iodine in infective Arthritis.	
Ibid	June 18, 1921	Collosol Selenium in Uterine Cancer.	
"Lancet"	Feb. 16, 1916	Collosol Argentum in Puerperal Septicæmia.	
Ibid	June 12, 1920	Collosol Argentum in Gonorrhoeal Ophthalmia.	
Ibid	Oct. 2, 1920	Collosol Aurum in Cerebro-Spinal Test.	
Ibid	Jan. 8, 1921	Collosol Ferromalt and Manganese in Carbuncles.	
"Medical World"	Aug. 8, 1918	Collosols Pallamine and Iodine in Gonorrhoeal Urethritis.	
"Practitioner"	May 1921	Collosol Manganese in Suppuration.	
Ibid	June 1921	Collosol Argentum in Gonorrhoea in the Male.	
"British Journal of Surgery"	July 1920	Collosol Selenium in inoperable Cancer.	
"Medical Press"	Mar. 3, 1920	Collosol Argentum in Ear Trouble.	
"British Medical Journal"	Nov. 15, 1913	Collosol Argentum in Sprue.	
Ibid	Oct. 28, 1916	General Use of Collosol Drugs.	
Ibid	Sept. 7, 1918	Collosol Pallamine in Epilepsy.	
Ibid	Aug. 17, 1918	Collosol Manganese in Furunculosis.	
Ibid	Oct. 5, 1918	Collosol Manganese in Furunculosis and Seborrhoea.	
Ibid	Mar. 22, 1919	Collosol Argentum in Meningo-coccus carrier.	
"Lancet"	Dec. 12, 1914	Bactericidal Power of Collosol Argentum and mercuric chloride.	
"Prescriber"	June 1919	Collosol Argentum in post influenzal sinusitis.	
Journal Royal Naval Medical Service	Jan. 1919	Collosol Manganese in gonorrhoea.	

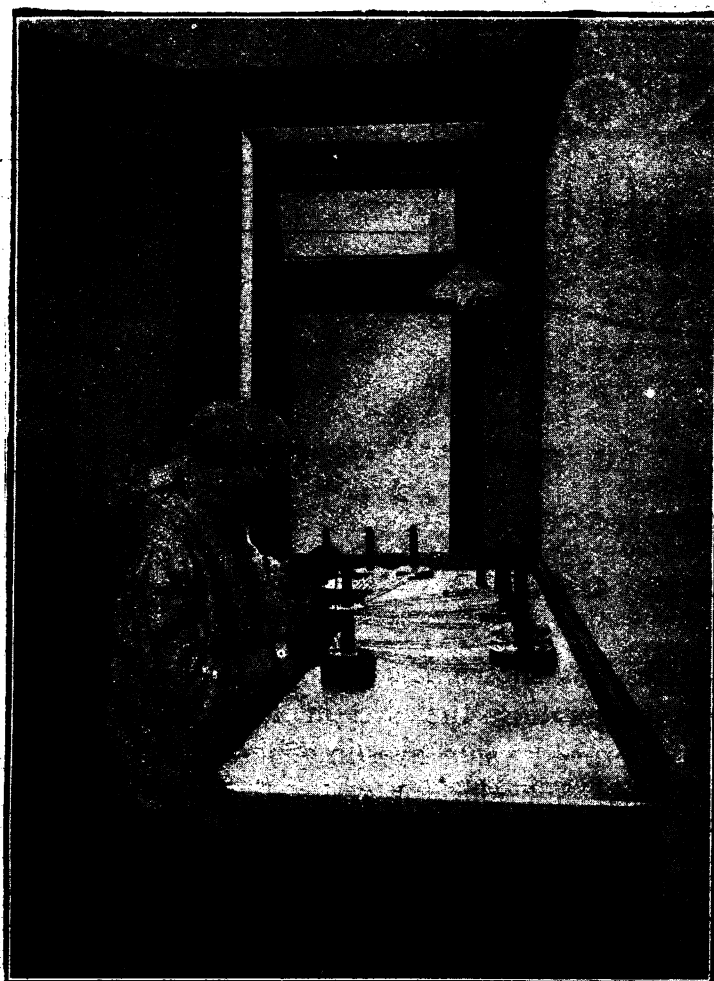
Corylo's

— which justifies further and close consideration to the possibilities of colloidal therapy in actual practice.

Explanatory brochure and clinical samples gladly submitted upon application, to the profession.

THE CROOKES LABORATORIES.

BRITISH COLLOIDS LIMITED,
22, CHENIES ST., TOTTENHAM COURT RD., W.C.1.
Telegrams Collosally, London.
Telephones 3663 and 3697 Museum.



Grading the strands into lengths of standard thickness.

London Hospital Catgut

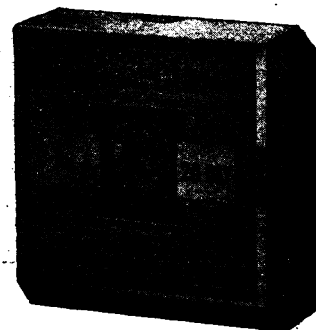
The grading of the various sizes of London Hospital Catgut is conducted under the same rigidly aseptic conditions as those which mark each stage of manufacture. Absorption time has been the subject of repeated tests over an extended period, so that the ligatures persist for 10, 20, 30 or 40 days and are rapidly absorbed after the limits specified. Surgeons are invited to visit the Ligature Laboratories and see for themselves the routine by which the raw material is evolved into finished catgut.

Prices and Descriptive Literature, on request, from

Allen & Hanburys Limited

48 Wigmore Street, W. 1.

The process of 'gauging' the finished catgut is conducted under the same conditions of rigid asepsis as those which mark the various steps in the actual manufacture.



**"ULTRATAN" AND
CHROMICISED CATGUT**
of 10, 20, 30 and 40 day
absorption; also Plain and
Formalin Catgut in all stan-
dard sizes.

'BYNO'

Hypophosphites

**An ideal tonic in general debility
and in convalescence following
acute disease.**

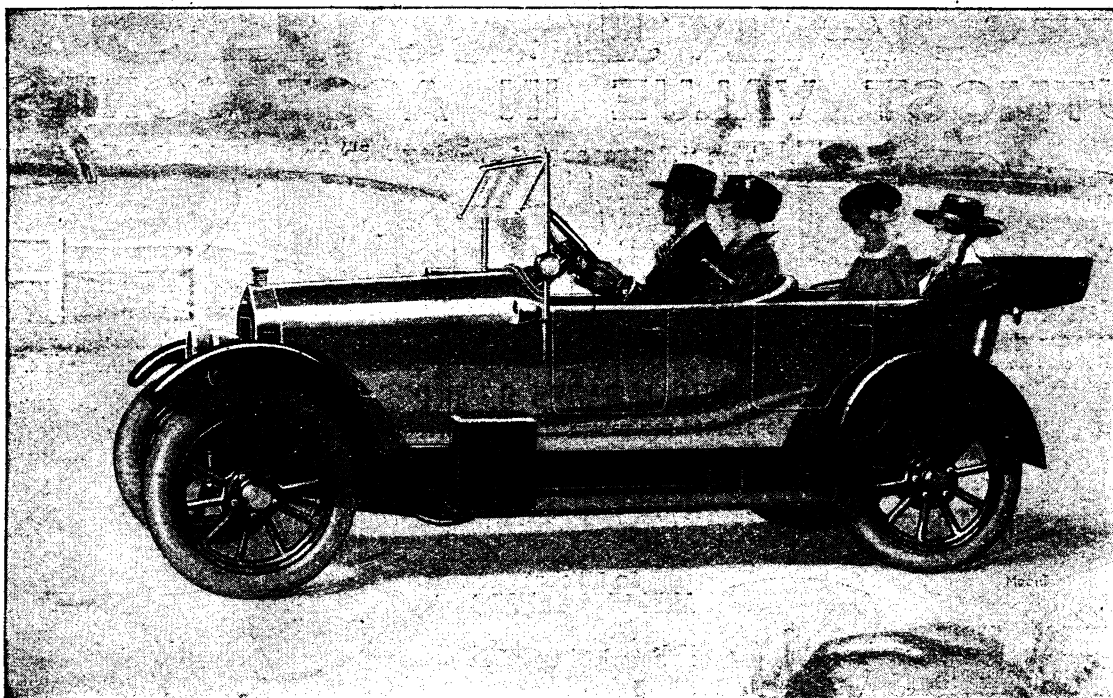
'Byno' Hypophosphites has shown itself to be an excellent tonic for invigorating the system after severe illness. It is of proved value also in general debility, acting as a mild but efficient restorative. The 'Bynin' Liquid Malt renders the preparation easy of absorption and in this respect it is a distinct advance on the official syrup of hypophosphites, which in many cases of impaired digestion is not well tolerated. In convalescence following Typhoid and also Influenza it reduces anæmia and improves the general tone. Where nervous exhaustion is associated with impaired gastric functions it is at once a stimulant and digestive.

*Further particulars and free sample
will be sent on request.*

Allen & Hanburys Ltd.
37 Lombard Street, LONDON, E.C. 3.

Composition

	grains
Calcium Hypophosphite	2
Potassium "	2
Sodium "	2
Iron "	$\frac{1}{2}$
Manganese "	$\frac{1}{2}$
Cinchona Alkaloids	$1\frac{1}{2}$
Nux Vomica Alkaloids (equal to Strychnine)	$\frac{1}{16}$
'Bynin' Liquid Malt	1 oz.



The "WOLSELEY" TEN TORPEDO

THIS car has been introduced to provide a small "family" car, high-grade in appearance and finish, but very economical to run. The front seat carries two adults, and the rear seat provides ample accommodation for two children or young persons. The power is ample and gives good hill-climbing qualities combined with low running costs.

It is supplied to two specifications as follows:—

TEN, Torpedo (Specification A) . . .	£525
TEN, Torpedo (Specification B) . . .	£490

The Wolseley TEN is also made in the following forms:—

TEN, Two-seater (Specification A) . . .	£475
TEN, Two-seater (Specification B) . . .	£440
TEN, Two-seater Coupé (fixed head) . . .	£650

Standard equipment, Dunlop Tyres.

Write us for Catalogue, No. 40, post free.

WOLSELEY MOTORS LTD.

Proprietors - - - VICKERS LIMITED;
Adderley Park, BIRMINGHAM.

London Showrooms:

WOLSELEY HOUSE, Piccadilly, W.1.

Indian Depot:

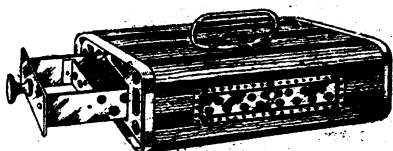
Sandhurst Bridge Road, Chaupatty, Bombay.

HIGHEST
QUALITY

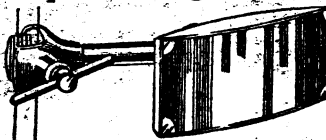
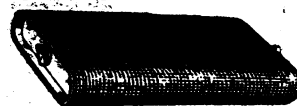
GAMAGES

LOWEST
PRICES

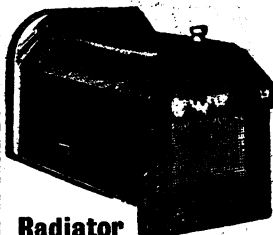
UTMOST VALUE IN ACCESSORIES.

**The Clark Heater Footwarmer.**For the Car **15/-** Carriage paid.
Charcoal Blocks for use in same, **5/-** doz.**The "Retroscope" Driving Mirror.**

This is something new and original. No other mirror gives the same results. Owing to the special curve of the glass, a very wide field of vision is obtained.

Excess Post free **35/-**Similar mirror, but for interior drive cars, to reflect through rear window, **30/-****Hot Water Foot Warmers.**

Made of heavy tinned steel, with brass or copper ends. Covered in strong plain blue carpet.

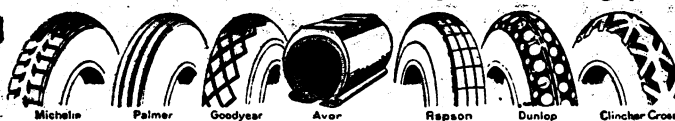
Prices: { 16" **31/6** ... 18" **36/-**
 { 21" **39/6** ... 24" **42/6**
 Carriage paid.**Radiator and Bonnet Covers.**

Strongly made in waterproof leather cloth material lined with especially thick felt. Keeps engine warm and facilitates starting in cold weather.

Radiator Covers only from **22/6**
Radiator and Bonnet Covers from **37/6**
Carriage paid.

ALL THE PRINCIPAL MAKES OF TYRES IN STOCK

All Orders despatched per return Passenger Train, carriage-paid.

**An Efficient ANTI-GLARE GUARD At Last!**Made of powerful tinted glass that will effectively kill any glare, either sun or head lamps. Very strong yet light frame, and clip to fix on peak of cap. Can be flicked into position by a mere movement of the finger. Price **7/6**

Post free.



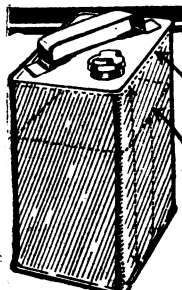
UP.



DOWN. In Use.

**Foot Muffs**With high back giving full protection to ankles. In suede finish leather, trimmed with fur and lined with warm lamb's wool. **45/-**

In waterproof or suede finish leather, trimmed with smart fringe, lined with lamb's wool and trimmed with heavy fur.

Carriage paid. **47/6****GAMAGES, HOLBORN, LONDON, E.C. 1****Save a third of Your Fuel Outlay**

You can do this with a "WHALLEY" Patent Air Valve. "WHALLEY" users have proved this silt-saver for eight years—proved our claim of 25% to 50% economy in petrol consumption.

The "WHALLEY" practically eliminates carbonisation, acts as an efficient air brake and keeps your engine cool—without interfering with the easy starting or functioning of the carburettor at slow speeds with the valve in the closed position

Costs a Little
Saves a Lot**WHALLEY
AIR VALVE**

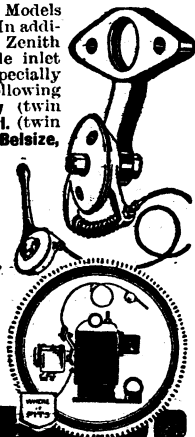
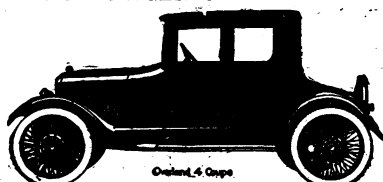
THERE are 40 different Models of the "WHALLEY." In addition to the full range of Zenith sizes in both end and side inlet types, we can supply specially designed Models for the following cars:—Armstrong - Siddoley (twin carburettor), Sunbeam 6-cyl. (twin carburettor), Standard, Belsize, Overland, Ford, Dodge Brothers & G. N. Cycle Car.

Write to the Manufacturers for Free Booklet.

The Hollingdrake
Automobile Co. (1919)
Ltd.,Wellington Road South,
STOCKPORT.

Tel.: Stockport 2660.

H. G.

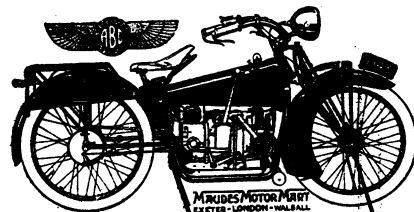
**1921 OVERLAND COUPÉ**
ELECTRIC LIGHTING AND STARTING.

Overland 4 Coupé

List Price ... **£525**
Only Shop Soiled
OUR PRICE ... **£425**F. H. PEACOCK & Co.,
219, High Road, Balham, S.W. 17.
Telephone: STREATHAM 170.**NEW LIGHT CARS**HUMBER;
STANDARD,
SWIFT, etc.**£100 cash**Balance by instalments
to suit your convenience.

Any make of car supplied.

Your old car taken in part payment.

SAUNDERS GARAGE,
GOLDER'S GREEN, N.W. 11RELIABILITY.
COMFORT.CLEANLINESS.
ECONOMY.**THE
MOTOR CYCLE
FOR DOCTORS****An Opportunity Not to be Missed.**

Having secured the manufacturers output of these machines we offer them at a most attractive price. Cash or deferred payments (4% extra only)

3 H.P. STANDARD MODEL, ... **£98.**3 H.P. LUCAS DYN'MO MODEL, **£118.**

Makers Full Guarantee.

MAUDE'S MOTOR MART
100, GREAT PORTLAND STREET
LONDON—W.1.

PHONES—MUSEUM 557 and 581. GRAMS' ABBOTTS WESOD

100, PARIS STREET, EXETER.

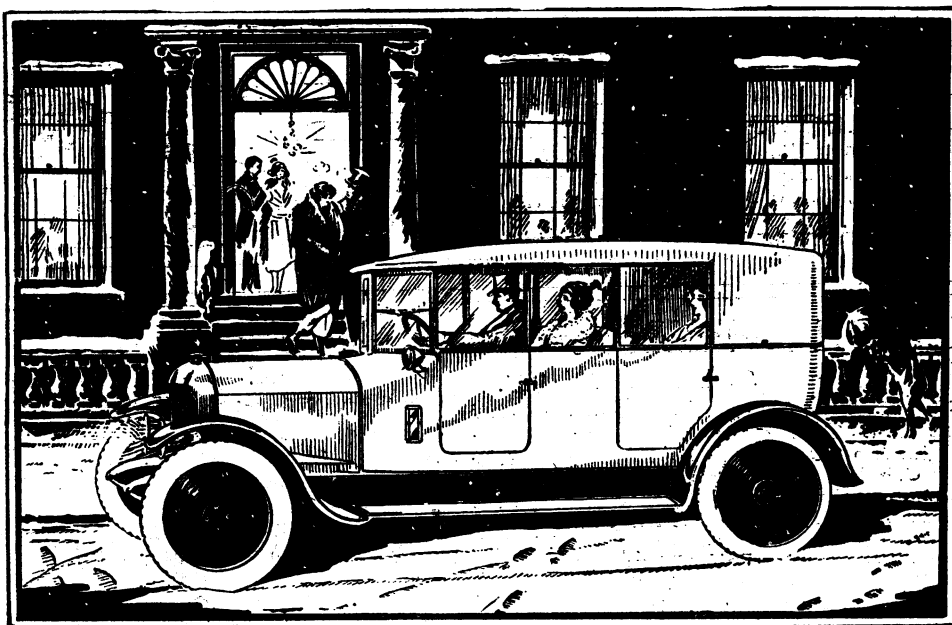
TELEPHONE—EXETER 933. TELEGRAMS COMBUSTION EXETER

WOLVERHAMPTON ST. WALSALL

TELEPHONE, WALSALL 444. TELEGRAMS COMBUSTION WALSALL

CASH, EXCHANGES OR DEFERRED PAYMENTS.

All-Weather Motoring



12-14 h.p. 4-Cylinder, Model I.E. Chassis with English H.H.H. All-Weather Cabriolet Body.

You, as a Doctor, realise the need for increased weather protection and comfort in winter time. Think of the discomfort of being caught in a sudden downpour in an ordinary open car! The 12-14 h.p. De Dion Bouton Chassis fitted with the famous "H.H.H." All-Weather Body makes the Doctor's ideal all-the-year-round car—warm and comfortable in cold weather, but a pleasant open car in summer. The change can be effected single handed in a few seconds.

12-14 h.p., 4-cylinder, Model I.E. Chassis, with 5 Michelin detachable disc wheels, 5 Michelin 760 x 90 Cable tyres, dynamo for self-starting and wiring for electric light **£495**

Prices of complete cars range from £610 to £825.

Write to-day for Illustrated Catalogue describing in full 1922 Models.

EARLY DELIVERIES.



De Dion-Bouton Limited

10 GREAT MARLBOROUGH STREET LONDON W.1.

Telephone—REGENT 3148 (2 lines).

Telegrams—"ANDESITE REG, LONDON.

Service Depot and Coach Building Works:

WOODSIDE WORKS, HIGH ROAD, NORTH FINCHLEY, LONDON, N. 12.

DUCO GREASE RETAINING GAITERS

Every car, no matter how carefully sprung, will run better and far more smoothly if the springs are fitted with DUCO Gaiters. Every movement of the spring is made easier, and on all kinds of roads the effect is simply wonderful.

For all types of Car Springs, and at all Garages, from 96 each.

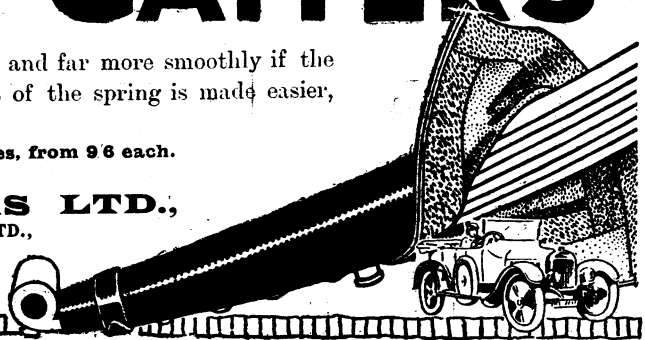
Write for the DUCO Booklet.

Wholesale only: **BROWN BROTHERS LTD.,**

with which is amalgamated THOMSON & BROWN BROTHERS, LTD.,

Great Eastern Street, E.C.2; and 15, Newman Street, W.1.

Branches: Manchester, Cardiff, Glasgow, Newcastle, Southampton, etc.



22,320 Miles.

Sandhurst. 11/11/21.

"I am writing to tell you what I consider a great achievement for a Tyre on a Light Car. Early May, 1920, I put two 710 x 90 Beldam Tyres on the rear wheels of my G.W.K. Both Tyres covered 20,000 miles on bad country roads before one split in the wall, and the other after travelling 22,320 miles is still on the car."

W.W.H.

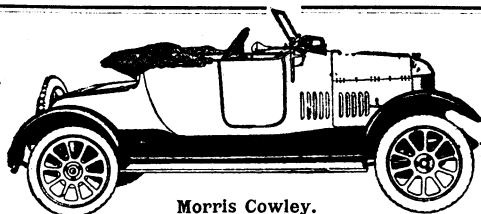
Note these Beldam Bulldog Prices:

30 x 3½ **£4 18 6.** 815 x 105 **£6 2 0.**

Other sizes in proportion. All standard sizes made.

Write for latest Price List and Booklet "Testimony"—or send a trial order.

The Beldam Tyre Co. (1920) Ltd. Brentford, Middlesex.
Telephone: Ealing 125.



Morris Cowley.

ECONOMY MOTORING Latest 1922 Reduced Prices.

8 h.p. Coventry Premier 2-Seater.....£250
*11.9 A.C. 2-Seater All-Weather.....£550
*11.9 A.C. 4-Seater All-Weather.....£575

SPECIAL SELECTION ALWAYS IN STOCK.

8 h.p. Rover, 2-Seater.....£220 10 h.p. Calthorpe, 2-Seater.....£355
*11 h.p. Lagonda Coupe.....£395 11.9 h.p. Morris Cowley, 2-Seater, 285Gs.
*11 h.p. Lagonda All-Weather.....£395 11.9 h.p. Morris Cowley, 4-Seater, 325Gs.
*Fitted with Self-Starter.

Free Trials. Free Tuition. Free Service. At your Service Always.

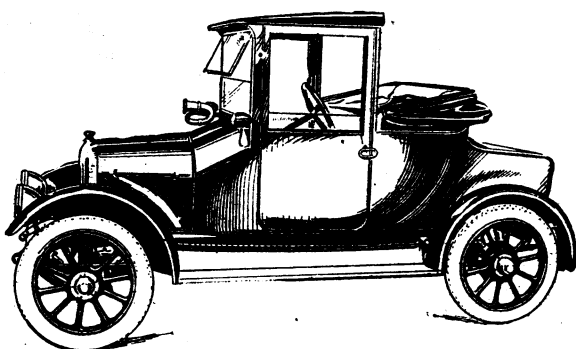
OFFORD & SONS, Ltd.,
Motor Agents and Coachbuilders,
94, Gloucester Road, S.W.7.
Telephone - - - KENSINGTON 642.

Established 1790. Any make of Car supplied on Deferred Payments.



Lagonda.

The SINGER "10" AN IDEAL DOCTORS CAR.



THE NEAT AND HANDSOME DESIGN OF THE SINGER "10" WILL ALWAYS IMPRESS THE OBSERVER AT A GLANCE. BUILT THROUGHOUT BY HIGHLY SKILLED WORKMEN FROM THE FINEST MATERIALS PROCURABLE, WE HAVE NO HESITATION IN RECOMMENDING IT TO STAND THE HARD WEAR AND TEAR TO WHICH A MEDICAL PRACTITIONER'S CAR IS SUBJECT. IMMEDIATE DELIVERY CAN BE GIVEN OF A LIMITED NUMBER OF COUPES MODELS AS ILLUSTRATED, PAINTED ROYAL BLUE, UPHOLSTERED IN LEATHER.

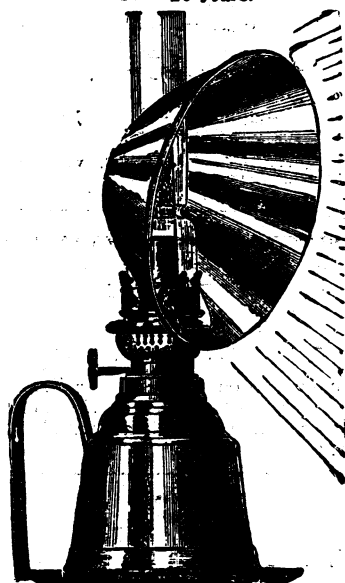
PRICE, WITH DYNAMO LIGHTING EQUIPMENT AND SELF-STARTER **£475**

Write to day for full particulars—

SINGER & CO., LTD.,
AND 17, HOLBORN VIADUCT, LONDON, E.C.
COVENTRY, ENG.

GUY'S HOSPITAL PARABOLIC REFLECTOR LAMP

Used in Guy's Hospital for the past
20 years.



SENT
POST
PAID TO
ANY
ADDRESS
All
Nickel
Plated
10/6

If abroad
postage
extra.

To Practitioners in country and abroad
where gas or electric light is not available
THIS LAMP is of thorough practical use.
Send for particulars—

J. BRUCE,
282, Borough High St., London, S.E.
And LAN'T STREET.

VACCINES AUTOGENOUS AND STOCK.

In bulk or in graduated doses.

Apply, Secretary,

LABORATORIES OF PATHOLOGY & PUBLIC HEALTH,
6, Harley Street, London, W. 1.

REAGENTS FOR WASSERMANN REACTION

STANDARDISED and supplied in
Ampoules, Ready for Use.

AS USED IN THESE LABORATORIES

For prices and particulars apply to SECRETARY,
LABORATORIES OF PATHOLOGY & PUBLIC HEALTH,
6, Harley Street, London, W. 1.

CULTURE MEDIA

Freshly Prepared and Standardised weekly.

In Tube or in Bulk.

Apply,

LABORATORIES OF PATHOLOGY & PUBLIC HEALTH,
6, Harley Street, London, W. 1.

VITAMINES.

For Food Value and
Digestive Properties you
should recommend

CLARK'S CREAMED BARLEY
THE NEW ENGLISH BREAKFAST FOOD
WRITE FOR A FREE SAMPLE.

GEORGE CLARK & SON, LTD.,
7, Broadway Works, Millwall Docks, London, E. 14

BRASS NAME PLATES,

For the Profession.

The Plates are manufactured in stout metal, deeply
engraved, mounted on polished mahogany blocks,
with fastenings ready for fixing.

COOKE'S (Finsbury), LTD.,
Brass Plate Engravers, Memorial Brasses, &
FINSBURY PAVEMENT HOUSE, LONDON, E.C. 2.
Telephone: London Wall 2446 (3 Lines).
And at Walbrook, E.C. 4, and Bradford, Yorks.

SEND FOR ILLUSTRATED CATALOGUE.

HAVE YOUR SUIT TURNED

For Free

Descriptive Booklet

write

THE INVISIBLE REPAIR CO
(Dept. M.J.) St. Martin's Court, Ludgate Hill, E.C. 4.
(ONLY ADDRESS)

DISPENSING BOTTLES

Another Reduction!

Best English Make. Don't Buy Cheap German

Write—

H. JESSOP (Dept. B), 27, Westgate, Burnley
For Carriage-paid Prices.

"Tycos" Sphygmomanometer

for the quick and accurate
determination of both DIASTOLIC and SYSTOLIC
readings of Arterial Blood Pressure. Obtainable
from a reputable dealer. Particulars free from
SHORT & MASON, Ltd., Macdonald Road, Waltham-
stow, London, E. 17.

SMEDLEY'S HYDRO, MATLOCK.

Established 1853

LARGEST AND MOST COMPLETE.

Resident Physicians: { G. C. R. HARBINSON, M.B., B.Ch., B.A.O. (R.U.I.)
R. MACLELLAND, M.D., C.M. (Edin.)

Unrivalled suites of Baths for Ladies and for Gentlemen, including Turkish and Russian
Baths, Aix and Vichy Douches, Massage and Weir Mitchell treatment, an Electric
Installation for Baths and Medical purposes, Dowsing Radiant Heat, D'Arsonval High
Frequency, Roentgen X-Rays, Nauheim Baths, etc. Special provision for Invalids.
Milk from own farm. Large Winter Garden. Night attendance. Rooms well
ventilated and all bedrooms warmed in Winter. A large Staff (upwards of 60) of trained
Male and Female Nurses, Masseurs, and Attendants.

Prospectus and full information on application to **H. CHALLAND, Managing Director.**
Telegrams—"SMEDLEY'S, MATLOCK."

Rest and Convalescent Home

ON THE SURREY HILLS for NERVE and
CHRONIC PATIENTS. Every care and comfort.
Own fruit, vegetables, chickens, eggs, &c. Beautiful
surroundings. Within easy reach of London.—
KENLEY HOUSE, KENLEY, SURREY.

MIDDLETON HALL,

MIDDLETON ST. GEORGE,
Near DARLINGTON, Co. DURHAM.

Private house for the care and treatment of ladies
and gentlemen suffering from mental diseases.

This house, which is situated in a healthy and
pleasant country, has been recently erected from
plans approved by the Commissioners in Lunacy,
and has been comfortably furnished throughout.
Private rooms and special attendants are provided
if required.
Terms to be had on application to the "Medical
Officer."

HOME FOR FEEBLE-MINDED,

BURTON HOUSE, LANCASTER.

This well-appointed private establishment over-
looks Morecambe Bay, and possesses extensive
gardens and grounds, with tennis and croquet
lawns. Varied scholastic and manual instruction.
Individual attention given by experienced staff
under Lady Matron. For terms, apply Dr. W. H.
COUPLAND, Medical Superintendent.

BISHOPSTONE HOUSE, BEDFORD.

PRIVATE HOME for MENTALLY AFFLICTED
LADIES. Ten only received. Terms, 6 gns.
weekly. Apply, Medical Officer, or Mrs. PELLE.
Telephone 703.

A SECURITY WHICH DOES NOT DEPRECIATE.

Endowment Assurance provides a means of saving
which for convenience and advantage is unequalled.
Endowment Assurance is Life Assurance combined
with Investment.

PRUDENTIAL ASSURANCE CO., LTD.
142, HOLBORN BARS, E.C. 1.

Nursing Home.—Lady, with

considerable experience of first-class Surgical
Nursing Home work in Edinburgh, is desirous of
opening a SURGICAL HOME on her own account.
Massage, Electro-therapy and Medical Gymnas-
tics would be undertaken by fully-trained Nurse.
Information as to locality (England or Scotland),
with good surgical opportunities welcomed.—Address,
No. 6625, BRIT. MED. JOUR., 129, Strand, W.C. 2.

DROITWICH BRINE BATHS

for RHEUMATISM, &c.
WARNING.—The Public are warned that the
TREATMENT CAN ONLY BE OBTAINED AT
DROITWICH in the NATURAL BRINE.
Treatments include Nauheim Baths and Aeration
Baths (modern adaptation of celebrated French
Whirlpool System).
LOVELY HOLIDAY DISTRICT. GOOD HOTELS, &c.
Illustrated Booklet post free from
J. H. HOLLYER,
15, Corbett Estate Offices, Droitwich (Worcs.).
SPECIAL FACILITIES TO MEDICAL MEN.

SHROPSHIRE ORTHOPÆDIC HOSPITAL, OSWESTRY (Station: Gobowen, G.W.R.).

OPEN-AIR WARDS.

PRIVATE WARDS, 5 Gns. per week, exclusive of
Surgeon's fees, but inclusive of X-rays, splints,
plasters, massage and gymnasium.

A limited number of beds are available in the
GENERAL WARDS at 2½ Gns. per week, inclusive.
For particulars apply the Superintendent.

BOURNEMOUTH HYDRO.

With finest Sun-lounge and Marine Balcony on the
South Coast.

Every kind of Bath.
Every kind of Massage.
Every kind of Electricity.
Every kind of Diet.

Carlsbad and Vichy Waters, &c.
High Frequency. Electric Lift.

Prospectus from Secretary. Tel. 341.
Resident Physician:—W. JOHNSON SMYTH, M.D.

Grove House, All Stretton, Church Stretton, Shropshire.

A Private HOME for the care and Treatment of
a limited number of ladies mentally afflicted.
Climate healthy and bracing.
Medical Superintendent, Dr. MCCLINTOCK.

WYE HOUSE, BUXTON

For the treatment of Ladies and Gentlemen mentally
afflicted. Voluntary Boarders received. Situated
1,200 ft. above sea level, facing S.; 14 acres of
ground.—For terms apply to the Resident Medical
Superintendent, W. W. HORTON, M.D.
Nat. Tel. 130.

BOREATTON PARK, BASCHURCH, SALOP.

A first-class Country Mansion especially
adapted for the reception of a limited
number of Ladies and Gentlemen
mentally afflicted.

For particulars apply Dr. SANKEY.

NEWMAINS RETREAT, NEWMAINS, LANARKSHIRE,

Licensed under the Inebriates Acts.

The House is devoted to the care of LADIES of the upper classes only, who can be treated either under the Acts or as Voluntary Patients. The place stands high and the estate is extensive, with bracing air and in good shelter. It is very retired and beautiful well situated for the treatment of Inebriety, Narcomania and other perversions, Neurasthenia, Hysteria, and Minor Mental Ailments. No patient under Certificate of Insanity can be received.

References:—Prof. G. M. ROBERTSON, Dr. RISIEN RUSSELL, Dr. OSWALD, and others.

Terms and particulars on application to "Superintendent, The Retreat, Newmains, Lanarkshire." Nearest Station: Hartwood, Cal. Rly

INEBRIETY.

DALRYMPLE HOUSE, RICKMANSWORTH, HERTS.
For the treatment of gentlemen under the Act and privately. Established 1883 by an Association of prominent medical men and others for the study and treatment of Inebriety.
For particulars, apply to F. S. D. Hogg, M.R.C.S., &c., Resident Medical Superintendent.
Telephone: 16 Rickmansworth.

BARNWOOD HOUSE HOSPITAL FOR MENTAL DISEASES, BARNWOOD near GLOUCESTER

Telephone: No. 7, Barnwood.
Exclusively for PRIVATE PATIENTS of the UPPER AND MIDDLE CLASSES.

This Institution is devoted to the care and treatment of persons of both sexes at moderate rates of payment.

Voluntary boarders not under certificates are admitted.

Under special circumstances the rates of payment may be reduced by the Committee.

The MANOR HOUSE for Ladies only, which is entirely separate from the Hospital and standing in its own grounds, will be utilised exclusively for voluntary patients.

For further information apply to ARTHUR TOWNSEND, M.D., the Medical Superintendent.

Telephone & Telegrams: "Haynes, Brentwood, 45."
Littleton Hall, Brentwood, Essex.
Large grounds. 400 ft. above sea. HOME for LADIES Mentally Afflicted. Voluntary Boarders received. Stations: Brentwood, 1 mile; Shenfield, 1 mile; Liverpool Street, 26 minutes.—Apply, Dr. HAYNES.

FOR THE
TREATMENT OF LADIES
suffering from
NERVOUS AND MENTAL AFFECTIONS.
The Moat House, Tamworth, Staffs.
Telephone: 108 Tamworth.

The House stands in grounds of 10 acres and is within 5 minutes' drive of L. & N.W. & M.R. Stations.
For terms, etc., apply to the Licensees CLAUDE HOLLINS; or Mrs. S. A. MICHAUX (Resident); or to the Medical Attendant, Dr. LOWSON.

THE GRANGE, NEAR ROTHERHAM.

A HOUSE licensed for the reception of a limited number of ladies of unsound mind. Both certified and voluntary patients received. This is a large country house with beautiful grounds and park, 5 miles from Sheffield. Station, Grange Lane, G.C. Railway, Sheffield. Telephone No. 34, Rotherham.
Resident Physician—GILBERT E. MOULD, L.R.C.P., M.R.C.S. Consulting Physician—CROCHLEY CLAPHAM, M.D., F.R.C.P.E.

SPRINGFIELD HOUSE, Near BEDFORD.

(Telephone No. 17.)
A PRIVATE HOME FOR MENTAL CASES.
Ordinary Terms, Five Guineas per week (including Separate Bedrooms for all Suitable Cases without extra charge).

For forms of admission, &c., apply to the Drs. BOWER, as above, or at 5, Duchess Street, Portland Place, W. 1, on Tuesdays, from 4 to 5.

"Telegrams,
RELIEF, OLD CATTON."
Telephone,
290 NORWICH.
**THE GROVE, OLD CATTON,
NORWICH.**

A High-class Private Nursing Home for Ladies desiring Curative Treatment for Nervous Affections. Hysterical and Borderland Cases in the early stages, and those suffering from insipient mental trouble are received as Voluntary Boarders. Apply to the Misses MCINTOCK, or to Cecil A. P. OSBURN, F.R.C.S.E., Medical Superintendent.

SHAFTESBURY HOUSE,

FORMBY-BY-TH-SEA, LANCASHIRE.

For the CARE and TREATMENT of Ladies and Gentlemen MENTALLY AFFLICTED, with or without certificates. Consultations in Liverpool or Southport can be arranged by telephone.
For terms apply MEDICAL SUPERINTENDENT.
Tel. No. 8 Formby.

THE COPPICE, NOTTINGHAM. HOSPITAL FOR MENTAL DISEASES.

President: The Right Hon. the EARL MANVERS.

This Institution is exclusively for the reception of a limited number of Private Patients of both sexes, of the Upper and Middle Classes, at moderate rates of payment. It is beautifully situated in its own grounds on an eminence a short distance from Nottingham, and from its singularly healthy position and comfortable arrangements, affords every facility for the relief and cure of those mentally afflicted.

For terms, &c., apply to the Medical Superintendent.

BARNSLEY HALL, BROMSGROVE.

Mental Private Patients of both Sexes are received in connection with the Worcestershire Mental Hospital. Extensive private grounds in the beautiful Lickey District. Terms: Thirty-Five Shillings Weekly. For further particulars and necessary forms apply to the MEDICAL SUPERINTENDENT.

EARLY TREATMENT OF NERVOUS DISORDERS AND BORDERLAND CASES.

CONDUCTED BY THE SOCIETY OF FRIENDS.

MILLFIELD, near YORK, for Gentlemen.

THROXENBY HALL, near SCARBOROUGH, for Ladies. Tel.: 282.
Apply in either case to the Matron, or to the Secretary, A. FRED BURGESS, 107, Heslington Road, York. (Telephone: 112).
No certifiable persons can be received.

ST. ANDREW'S HOSPITAL FOR MENTAL DISEASES, NORTHAMPTON.

President—

The Right Hon. the EARL SPENCER, K.G.

This Registered Hospital receives for treatment PRIVATE PATIENTS of the UPPER AND MIDDLE CLASSES of both Sexes. The Hospital, its branches (including a Seaside Home at Llanfairfechan, North Wales), and its numerous villas are surrounded by nearly a thousand acres of Park and Farm.

Voluntary Boarders without Certificates received.

For particulars apply to DANIEL F. RAMBAUT, M.A., M.D., the Medical Superintendent.

TELEPHONE No. 56.

THE FLOWER HOUSE BECKENHAM LANE, S.E. 6.

Telephone: BROMLEY 57.
(For over 20 years under the direction of the late Dr. CHARLES MERCIER.)

A PRIVATE HOME of the highest class for Gentlemen suffering from Mental and Nervous Disorders. Voluntary Patients received. A Family Mansion with 25 acres of beautiful grounds.

For terms and further particulars apply ALFRED E. PRICE, M.D., M.S., Medical Superintendent.

STRETTON HOUSE, Church-Stretton, Shropshire.

A Private HOME for the treatment of Gentlemen suffering from Mental diseases. Bracing hill country. See "Medical Directory," p. 2154.—Apply to Medical Superintendent. Phone, 10 P.O. Church-Stretton.

DUFF HOUSE, BANFF, SCOTLAND.

TREATMENT OF DISORDERS OF THE STOMACH AND INTESTINES, INCLUDING TROPICAL DISEASES; DIABETES

and other complaints which need skilled chemical, bacteriological and protozoological investigation and dietetic treatment.

The House is fitted with laboratories, X-ray Installation, Medical Baths, Central Heating, and Lifts.

The climate is mild, and the rainfall the lowest in Scotland.

Apply, THE SECRETARY, Duff House, Banff.

FENSTANTON. CHRISTCHURCH ROAD, STREATHAM HILL, S.W. 2.

A Private HOME for the Care and Treatment of a limited number of Ladies with Mental and Nervous Disorders.

Large Mansion with 12 acres of ground. (See Medical Directory, pp. 2146.)—Apply, J. H. KARLA, M.D., Resident Physician. Tel.: Brixton 175.

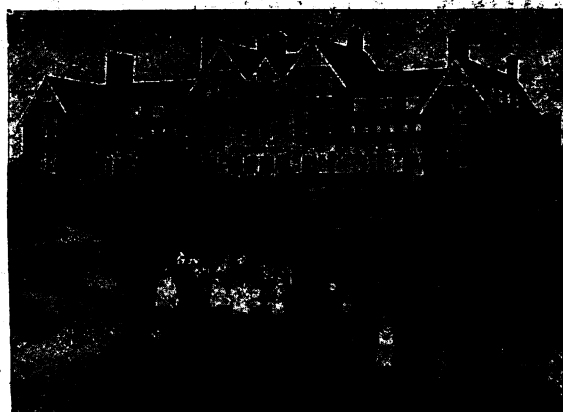
CITY OF LONDON MENTAL HOSPITAL, DARTFORD, KENT.

Under the Management of a Committee of the Corporation of the City of London.

PRIVATE PATIENTS are received at a weekly charge of Two Guineas and upwards.
Apply to the MEDICAL SUPERINTENDENT.

Chronic Invalids and Nervous

CASES are received from 5 guineas weekly in Doctor's Country Home. Own poultry, fruit and vegetables. Tel. 194 Chertsey.—Apply, MEDICO, Harcourt, Chertsey.



YARROW CONVALESCENT HOME BROADSTAIRS.

For CHILDREN of WELL-EDUCATED PEOPLE
OF VERY LIMITED MEANS

100 Beds. Boys, ages 4 to 12. Girls, ages 4 to 14.

Charge 21/- a week for each child.

This Fee is subject to addition or deduction according to Parents' means.

The usual stay is four weeks, but some wards are reserved for serious cases requiring special treatment, and for these a lengthened stay may, under some circumstances, be granted, and the age limit raised to 14 for Boys and 16 for Girls.

The Home faces the sea, and is open all the year, being as well adapted for winter as for summer residence.

PARTICULARS CAN BE OBTAINED FROM THE SECRETARY,
116, VICTORIA STREET, WESTMINSTER, LONDON, S.W. 1.

CAMBERWELL HOUSE,

33, PECKHAM ROAD
LONDON, S.E.

Telegrams: "Psycholla, London."

Telephone: New Cross 1037.

For the Treatment of Mental Disorders.

Completely detached villas for mild cases. Voluntary Boarders received. 20 acres of grounds, including extensive allotments on which gardening is encouraged. Tennis, croquet, squash racquets, and all indoor amusements. Daily Services in Chapel.

Senior Physician: FRANCIS H. EDWARDS, M.D., M.R.C.P. An Illustrated Prospectus, giving full particulars and terms, may be obtained on application to the Secretary

HOVE VILLA, BRIGHTON.—A Convalescent Branch of the above to which all Suitable Patients may be sent on Holiday.



NORTHWOODS HOUSE, WINTERBOURNE, near BRISTOL.

For PRIVATE TREATMENT OF MENTAL DISEASES.

Situated in a large park in a healthy and picturesque locality, easily accessible by rail via Bristol, Winterbourne, Patchway, or Yate Stations. Uncertified Boarders received.—For further information see Medical Directory, page 2149. Terms moderate. Apply to Dr. J. D. THOMAS, Resident Physician and Licensee, for full particulars.

HAYDOCK LODGE, Newton-le-Willows, LANCASHIRE

A PRIVATE MENTAL HOSPITAL FOR THE UPPER AND MIDDLE CLASSES ONLY, EITHER VOLUNTARY, OR UNDER CERTIFICATE.

Patients treated and classified according to their social and mental condition. Terms from £2 2s. 6d. Private apartments on special terms. Established for 60 years. Under the same management 25 years. Recovery rate 50 per cent. Situated midway between MANCHESTER and LIVERPOOL. Two miles from Newton-le-Willows Station on the L. & N. W. Railway, connecting it with all parts.

Medical Staff.

Resident Medical Proprietor: CHARLES T. STREET, M.R.C.S., L.R.C.P., LIVERPOOL: 47, Rodney Street. MANCHESTER: Winter's Buildings, St. Ann's St. Resident Medical Superintendent: J. C. WOOLTON, M.R.C.S. ENG., L.R.C.P. LOND. Dr. STREET. Thursday: 2 till 4. Dr. P. G. MOULD; Dr. G. E. MOULD, Tuesday and Visiting & Sir JAMES BARR, LL.D., M.D., F.R.C.P., 72, Rodney St., Liverpool. Telephone 2456 Royal. Thursday 12 to 1.30. Telephone 7611 Manchester. Consulting: G. E. MOULD, Physician for Mental Diseases to the Sheffield Royal Hospital, The Grange, Rotherham. Other days by appointment. For further particulars and Forms of admission apply Resident Proprietor, Haydock Lodge, Newton-le-Willows. Tele.: "STREET, Ashton-in-Makerfield." Tel.: 11 Ashton-in-Makerfield.

PENDYFFRYN HALL SANATORIUM

(NORDRACH-IN-WALES.)

FOR THE OPEN-AIR AND INOCULATION TREATMENT OF ALL FORMS OF TUBERCULOSIS.

TREATMENT AVAILABLE BY ARTIFICIAL PNEUMOTHORAX.

One of the first Sanatoria opened in the United Kingdom to carry out the treatment as practised at Nordrach. Carefully graduated walks rise through pine, gorse, and heather to a height of over 1,000 feet above sea level, commanding extensive views of both sea and mountains. Sheltered from E. and N.E. winds. Climate mild and bracing. Small rainfall. Large average of sunshine. There are over five miles of walks in the private grounds. Rooms heated by hot-water radiators and lit by electric light. Sister and full Nursing Staff. Trained Nurse on duty all night.

Resident Medical Officers: R. ARDRE FEGAN, M.R.C.S., L.R.C.P., L.M.S.S.A.; F. A. LUCAS HAMMOND, M.D., M.R.C.P., D.P.H.

For particulars apply to the Secretary, Pendyffryn Hall, Penmaenmawr, North Wales. Telegrams: Pendyffryn; and Telephone: 20 Penmaenmawr.

PALACE SANATORIUM, MONTANA-SUR-SIERRE

SWITZERLAND.

TUBERCULOSIS CURE STATION.

The Finest in Europe.

5,000 FEET HIGH.

Accommodation for 100 Patients.

Principal Resident Medical Officer:

BERNARD HUDSON, M.D. (Cantab.), M.R.C.P.,

Late Physician to the Queen Alexandra Sanatorium, Davos Platz.

Full particulars from the Secretary, 5, Endsleigh Gardens, London, N.W. 1.



THE DEESIDE SANATORIA IN SCOTLAND

FOR THE OPEN-AIR TREATMENT OF
PULMONARY TUBERCULOSIS and ALLIED DISEASES

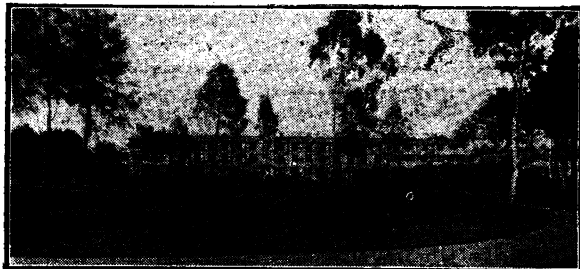
At **BANCHORY and MURTLE.**

Medical Director - **DAVID LAWSON, M.A., M.D., F.R.S.E.**

These Sanatoria are situated amidst **Ideal Surroundings** in **Middle Deeside**, the reputation of whose **Climate** in the treatment of Lung Diseases is well established.

Both Institutions are well equipped with **Research Laboratory, Throat Room, Dental facilities**, and powerful **X-Ray Plant. Full Day and Night Nursing Staffs** are employed.

Special Treatment by artificial **Pneumothorax** (with X-ray Control), the various **Tuberculins**, and **Autogenous Vaccines**, etc., are employed in suitable cases without extra charge.



NORDRACH-ON-DEE

AT BANCHORY, near BALMORAL.

Senior Physician - **IAN STRUTHERS STEWART, M.D.(Ed.) F.R.S.E.**

Assistant Physicians - **W. THURBURN SCOTT, M.B. (Cantab.)**
J. C. LORRAINE, M.B.Ed., F.R.C.S.E.

Apply Secretary, Sanatorium, Banchory, Scotland.

TOR-NA-DEE SANATORIUM

AT MURTLE.

Senior Physician - **J. M. JOHNSTON, M.B., Ch.B.Ed., D.P.H.**

Assistant Physician - **JAMES LAWSON, M.D.(Ed.), M.R.C.P.E.**

Junior Physician - **A. C. FOWLER, M.B., Ch.B.(Aberd.)**

Officers recommended by the Scottish Branch of the British Red Cross Society obtain priority in regard to admission. This Branch of the Society is prepared to contribute £1 lls. 6d. per week towards paying the fees of Officers whose admission meets with their approval.

Apply Secretary, Sanatorium, Murtle, Scotland.



THE HOME SANATORIUM,

WEST SOUTHBOURNE, NEAR BOURNEMOUTH.

For early Tuberculosis. Efficient hygienic treatment combined with home comfort. Skilled nursing. Night nurse. Excellent table. Beautiful grounds. Croquet and Billiards.

Terms: SIX GUINEAS WEEKLY.

For Illustrated Prospectus and full particulars apply to **J. E. ESSLEMONT, M.B., Ch.B., Resident Superintendent.**
Telegrams: "SANABILIS, BOURNEMOUTH." Telephone: 61 SOUTHBOURNE.

MENDIP HILLS SANATORIUM

FOR THE OPEN-AIR TREATMENT.

Specially built, facing South. 300 acres of Sanatorium grounds—meadow and woodland; sheltered pine avenues. Altitude 800 feet, magnificent view for miles south; hot water radiators and electric light.

Special features are breathing, singing, and graduated exercises; walking and tramping; continuous inhalation; electric treatment. Individual attention.

Resident Physicians: Dr. C. MUTHU and Dr. R. C. MACFIE.

For particulars, apply **SECRETARY, Hillgrove, Wells, Somerset.**

GRAMPIAN SANATORIUM

KINGUSSIE, INVERNESS-SHIRE.

Specially built for the Open-Air Treatment of Tuberculosis, and opened in 1901. Bracing mountain air. Elevation 860 feet above sea-level. Sheltered situation in pine wood. Graduated walks.

Electric light throughout building and in shelters. Inoculation Treatment available for patients—24 beds. Trained Nurse on duty all night. Terms 5 and 6 guineas per week. Medical Superintendent. **FELIX SAVY, M.B., Ch.B.**

For particulars apply to the Secretary.

ANSTAY PHYSICAL TRAINING COLLEGE,

ERDINGTON, BIRMINGHAM

offers well-educated Women complete Teacher's Training in **SWEDISH EDUCATIONAL GYMNAS-TICS, MEDICAL GYMNAS-TICS AND MASSAGE, DANCING**, in all its Branches, **GAMES, SWIMMING, ANATOMY, HYGIENE, &c.**

Three years' Course.

GOOD APPOINTMENTS AFTER TRAINING.

ROYAL NAVAL MEDICAL SERVICE

SHORT SERVICE SCHEME.

The Admiralty are prepared to accept applications for entry as Surgeon Lieutenants for Short Service in the Royal Navy.

Period of Service 3 years, with option to extend for further 12 months.

Pay 28/6 per diem, or £438/12/6 per annum.

Gratuity on Discharge... £8/6/8 for each completed month of service, or £100 per annum.

Equipment Allowance... £50, payable on joining.

Age of Candidates... Not to exceed 30 years.

Surgeon Lieutenants on the Short Service Scheme will be considered for transfer to the Permanent Service under certain conditions after six months' service.

Regulations for entry, and Form to be filled up by Candidates will be supplied on application to the Medical Director General.

ADMIRALTY, LONDON, S.W. 1.

National Hospital for the

PARALYSED AND EPILEPTIC.

A POST-GRADUATE COURSE OF LECTURES AND DEMONSTRATIONS IN NEUROLOGY will commence at the Hospital on January 1st, 1922.

The fee for the Course, which will last for ten weeks, will be £8 8s. There will also be a COURSE OF SIX LECTURES AND DEMONSTRATIONS ON NEUROLOGICAL OPHTHALMOLOGY, for which the fee will be £4 4s. if taken alone, or £2 2s. if taken with the Post-Graduate Course. The Special Course will be held only if there be sufficient entries. Particulars of these Courses and Syllabus can be obtained on application to the Hospital.

C. M. HINDS HOWELL,
Dean of the Medical School.

NORTH-EAST LONDON POST-GRADUATE COLLEGE,

PRINCE OF WALES'S GENERAL HOSPITAL, N. 15. The Practice of the Hospital is limited to Medical Practitioners. Particulars and Prospectus from **A. J. WHITING, M.D., Dean.**

ROYAL WESTMINSTER OPHTHALMIC HOSPITAL, KING WILLIAM STREET, STRAND, W.C. 2.

The Practice of this Hospital is open to Qualified Medical Practitioners and Registered Students of Medicine, who may enter at any time.

Practical Instruction in Diagnosis and Treatment of Affections of the Eye is given daily, in the Out-patient Department, from 1 p.m. to about 5 p.m.

Special Classes in the various subjects of Ophthalmology, suitable for candidates for the D.O.M.S. or R.C.P. & S.(Eng.) are held each Winter and Summer Session.

POST-GRADUATE TEACHING IN GYNÆCOLOGY. LONDON SCHOOL OF GYNÆCOLOGY, HOSPITAL FOR WOMEN, SOHO SQ., LONDON.

The hospital practice is open to a limited number of Graduates, who may attend Out-patients. In addition there are three special Courses of Gynæcology, each of six weeks duration, in the year. The course consists of Instruction in Out-patients, attendance at operations, Clinical Lectures on important Gynæcological conditions, demonstrations of rare cases, classes in Pathology and instruction in X-ray treatment. The course commences on Monday, January 16th, and the Class is limited to nine Graduates. Fee 10 guineas. —For particulars apply to The Dean, SIDNEY FORSDIKE, M.D., F.R.C.S., Hospital for Women, Soho Square.

COACHING for all MEDICAL EXAMINATIONS

either through the post or orally is
offered by the

UNIVERSITY EXAMINATION POSTAL INSTITUTION.

Principal: E. S. WEYMOUTH, M.A.(London).
Offices: 17, Red Lion Square, W.C.1.
Telephone: Central 6313.

39 years' experience in this mode of preparation.
Medical and Surgical Specialists with the highest qualifications.

The Courses reduce unnecessary work, and systematise reading.

A large number of successes have been gained at Conjoint Board, M.B., M.D., M.R.C.P., F.R.C.S., D.P.M., and other Examinations. Particulars on application.

Few failures. Fees moderate.

Preparation for new Diplomas in Psychological Medicine and Ophthalmology.

ORAL CLASSES

in Medicine, Pathology, Surgery, Midwifery and Gynæcology, for various Examinations, always in progress.

Museum, Microscope and Laboratory work. Instruction in Clinical Medicine can be arranged.

Preparation also, either Postal or Oral, for the Medical Preliminary.

Write to the PRINCIPAL for the Medical Prospectus (24 pages) and for full particulars of any Examination in which you may be interested.

DIPLOMA IN PSYCHOLOGICAL MEDICINE.

Complete Course of Postal Preparation for this Diploma.—Apply for particulars to the SECRETARY, Medical Correspondence College, 62, Queen Anne Street, and 19, Welbeck Street, London, W.1.

Queen Charlotte's Lying-in HOSPITAL and MIDWIFERY TRAINING SCHOOL, Marylebone, N.W.

Medical Students and Qualified Practitioners admitted to the Practice of this Hospital. Unusual opportunities are afforded of seeing obstetrical complications and operative midwifery, about one-half the total admissions being primiparous ones.

Certificates awarded as required by the various Examining Bodies. For rules, fees, &c., apply to ARTHUR WATTS, Secretary.

ALL MEDICAL EXAMINATIONS

Are you preparing for any Medical or Surgical Examination?

M.D. (London, Cambridge, Edinburgh, Durham, &c., &c.),
M.S. (London),
F.R.C.S. (England, Edinburgh),
D.P.H. (London, Camb., Oxford, Edinburgh, Dublin, &c.).

ALL MEDICAL EXAMINATIONS.

Conjoint Colleges—London, Edinburgh, Cambridge, Oxford, Durham, and other Provincial Universities.

IN
Medicine, Anatomy, Chemistry,
Surgery, Physiology, Physics,
Obstetrics, Pathology, Biology, &c., &c.

Any of these Booklets sent
free on application.

Send this

Coupon

for a

Copy

now!

The
Secretary,
MEDICAL
CORRESPONDENCE
COLLEGE,
62 Queen Anne Street,
and 19 Welbeck Street,
London, W.1.

Sir,—Please send me a copy
of your "Guide to Medical
Examinations," "How to Pass
the F.R.C.S.," "How to Write
a Thesis for the M.D. Degree."

Name

Address

State which book required

SCHOOLS for BOYS and GIRLS, TUTORS for ARMY, and ALL EXAMS.

Messrs. J. & J. PATON, having an intimate, unique, and up-to-date knowledge of the BEST SCHOOLS and TUTORS in this country and on the Continent, will be pleased to AID PARENTS in their choice by sending (free of charge) prospectuses and TRUST-WORTHY INFORMATION.

The age of the pupil, district preferred, and rough idea of fees should be given. Phone, write, or call. J. & J. PATON, Educational Agents, 143, Cannon Street, London, E.C.4. Telephone 5053 Central

**Small Private Residential
SCHOOL for PHYSICAL and MENTAL
DEVELOPMENT of ABNORMAL and BACKWARD
CHILDREN.** Special attention given to HEALTH;
PHYSICAL CULTURE; DIETS, &c. SEPARATE
HOUSE for SENIOR GIRLS with EDUCATIONAL
ADVANTAGES.—Particulars, Principal, ST. PAUL'S
House, Upper Maze Hill, St. Leonards-on-Sea.

ST. MARY'S HOSPITAL MEDICAL SCHOOL, PADDINGTON, W. 2. (University of London).

The SECOND TERM of the WINTER SESSION will begin on Jan. 3rd, 1922, when students can join classes in Preliminary, Intermediate, or Final Subjects.

Special features of this Medical School are:—

Healthy West-End situation.
Clinical Units in Medicine and Surgery.
Athletic Ground of 10 acres with good pavilion.
Research Scholarships amounting to £200 per annum.

Other Scholarships and Prizes of nearly £300 per annum.

Special Training in Pathology and Bacteriology.

1,000 beds available for Clinical Teaching.
Five Entrance Scholarships in Natural Science will be competed for in September.

Illustrated Prospectus and full particulars may be obtained from the Secretary.

C. M. WILSON, (M.C.) M.D., F.R.C.P., Dean.

ST. MARY'S HOSPITAL MEDICAL SCHOOL, (University of London.)

PRIMARY F.R.C.S. COURSE.

A Course of Instruction for the June Examination will begin on Monday, January 23rd, 1922, and will be conducted as follows:—

Anatomy and Embryology.—Professor FRAZER, F.R.C.S.

Physiology and Histology.—Professor COLLINGWOOD, O.B.E., M.D. (Including a Practical Course of Physiological Chemistry).

Time-table and particulars may be obtained from the School Secretary.

C. M. WILSON, (M.C.) M.D., F.R.C.P. Dean.

DIPLOMA IN PUBLIC HEALTH. THE ROYAL INSTITUTE of PUBLIC HEALTH

Patron:
HIS MAJESTY KING GEORGE V.

Principal:
Colonel Sir WILLIAM R. SMITH, M.D., D.Sc.,
LL.D., F.R.S.Ed. Barrister-at-Law.

The Course of Instruction for the Degrees and Diplomas in Public Health, with the necessary Laboratory work, can be commenced at any time, and special arrangements are made to suit the convenience of those men and women holding appointments, etc.

The Principal will be pleased to interview intending candidates for the purposes of advice.

Further particulars can be obtained from the Secretary, 37, Russell Square, W.C.1.

Seamen's Hospital Society.

LONDON SCHOOL of TROPICAL MEDICINE

Endsleigh Gardens, N.W.1.

Sessions will commence 9th January, 24th April, and 25th September approximately.

For Prospectus and further particulars apply to The Secretary, London School of Tropical Medicine, Endsleigh Gardens, N.W., or to the Head Office, Seamen's Hospital, Greenwich, London, S.E.

UNIVERSITY OF LONDON, UNIVERSITY COLLEGE DIPLOMA IN PUBLIC HEALTH.

Professor HENRY R. KENWOOD, C.M.G., M.B., D.P.H., F.R.S.E., Medical Officer and Public Analyst for the Metropolitan Borough of Stoke Newington, Medical Officer of Health and Education, Bedfordshire County Council, etc.
Lecturer on Diseases Common to Man and the Lower Animals—A. G. R. FOULERTON, F.R.C.S., D.P.H.
Lecturer in Bacteriology—F. H. TEALE, M.D., B.Sc., F.R.C.P.
Assistant—M. E. DELAFIELD, M.B., L.R.C.P., D.P.H.
Assistant Lecturer and Demonstrator (Bacteriology)—D. EMBLETON, M.A., M.B., L.R.C.P.
Demonstrator—F. T. MARCHANT, M.R.San.I.

The Laboratories are open daily from 10 to 5 (Saturdays 10 to 1) for Practical Instruction and Research.

The next Course begins on Tuesday, January 10th, 1922, at 2 p.m.

Demonstrations of Sanitary Appliances and Excursions to places of Public Health interest are undertaken.

Arrangements are made to suit the convenience of those engaged in practice.

A Special Course of Bacteriological Instruction is arranged for D.P.H. Candidates.

Particulars may be obtained on application to WALTER W. SETON, M.A., D.Lit., Secretary, University College, London (Gower Street), W.C.1.

DIPLOMA IN PUBLIC HEALTH, UNIVERSITY OF CAMBRIDGE

LECTURES AND PRACTICAL INSTRUCTION in the subjects of the Examination will begin 13th JANUARY and 19th APRIL, 1922, at the UNIVERSITY LABORATORIES, DOWNING STREET, CAMBRIDGE.

Hygiene, Chemistry, and Physics: Mr. J. E. PURVIS.

Bacteriology and Preventive Medicine: Dr. BRAHAM-SMITH. Special Lectures by Professor NUTTALL on Protozoal Diseases.

Practical Sanitary Administration, Hospital Administration, School Hygiene, Sanitary Law, &c.: Dr. LAIRD, M.O.H. for Cambridge, and Dr. ROBINSON, M.O.H. for the Cambridgeshire County Council.

Further particulars may be obtained from Mr. J. E. PURVIS, Public Health Chemical Laboratory, Cambridge.

POST-GRADUATE COLLEGE,

West London Hospital, Hammersmith, W. 6.

The Hospital Practice is reserved exclusively for Post-graduates, and a Reading and Writing Room is provided for them. Prospectus from the DEAN.

St. Thomas's Hospital. CLINICAL MEDICAL UNIT.

POST-GRADUATE COURSE IN NEWER METHODS OF CLINICAL INVESTIGATION.

A Special Practical and Systematic Course dealing with recent methods of investigation in such conditions as Albuminuria, Nephritis, Glycosuria, Diabetes, Gastro-intestinal Complaints and General Metabolic Disturbances will be held, commencing on February 6th 1922, and lasting for six weeks.

In addition to the above, the Course will include Demonstrations and Lectures on Neurology, X-rays, and Modern Cardiographic Methods, together with some Bacteriological work.

Fee for the Course £15 15s. The Course is limited to 15 Students.

Full particulars to be obtained from the Medical Secretary of the School, St. Thomas's Hospital, S.E.1.

St. Thomas's Hospital Medical SCHOOL.

A full-time DEMONSTRATOR OF ANATOMY is required, duties to commence as early as possible. Salary £400 per annum to a man with experience. Reasonable facilities for research and for passing higher examinations. Apply to the Professor of Anatomy.

University of Birmingham.

FACULTY OF MEDICINE.

PROFESSORSHIP OF ANATOMY.

The Council of the University invites applications for the Chair of Anatomy, vacant by the death of Professor Peter Thomson.

The stipend offered is £1,000 a year. Applications (12 copies) may be accompanied by testimonials, references, or other credentials, and should be received by the undersigned, on or before the 28th February, 1922.

Further particulars may be obtained from GEO. H. MORLEY, Secretary.

Guy's Hospital Medical SCHOOL.

FINAL F.R.C.S. COURSE.

A Course of Instruction for the May Examination will begin on Wednesday, February 1st, and will be conducted as follows:—

Mr. F. J. STEWARD and ... Special Clinical Demonstrations.
Mr. R. P. ROWLANDS ... Surgical Pathology.
Mr. R. DAVIES-COLLEY ... Operative Surgery.
Mr. L. BROMLEY ... Immunology and Bacteriology.
Professor J. H. EYRE ... Surgical Anatomy.

Professor T. B. JOHNSTON ... Tutorial Classes and Demonstrations.
Mr. W. H. OGILVIE ...

Inclusive Fee for the whole Course, £21 0 0.

All wishing to join the Course must lodge their applications on or before Saturday, January 21st, with the DEAN, Guy's Hospital Medical School, S.E.1, from whom full details of the Course may be obtained.

Guy's Hospital Medical SCHOOL, London Bridge, S.E.1.

PRIMARY F.R.C.S. COURSE.

A COURSE OF INSTRUCTION for the June Examination will commence on Tuesday, Jan. 17th, 1922, at 10 a.m.

ANATOMY.....Professor T. B. JOHNSTON.
PHYSIOLOGY.....Professor M. S. PEMBREY.
Fee: £11 4s. 6d. for each subject.
For further particulars apply to the DEAN, Guy's Hospital, London Bridge, S.E.1.

Preliminary Examinations.

The COLLEGE OF PRECEPTORS holds Preliminary Examinations for Medical and Dental Students in London and at Provincial Centres in March, June, September, and December. For Regulations, apply to the Secretary, College of Preceptors, Bloomsbury Square, London, W.C.1.

Liverpool School of Tropical MEDICINE.

COURSES OF INSTRUCTION (lasting three months) for the Diploma, and also in Veterinary Parasitology, commence about SEPTEMBER 15th and JANUARY 7th.—Prospectus from the DEAN, School of Tropical Medicine, University of Liverpool.

Lindsey County Council.

LADY ASSISTANT MEDICAL OFFICER.

Applications are invited from registered medical practitioners for the position of Assistant Medical Officer for duties chiefly in connection with eye clinics and maternity and child welfare work.

Salary £550, rising annually by £25 to £700 per annum.

The successful applicant will be required to provide a car in order to enable her to carry out the work, but an allowance will be made to cover expenses.

Applications, on forms to be obtained from the undersigned, must be received not later than 4th January, 1922.

R. ASHLEIGH GLEGG,
County Medical Officer of Health,
County Health Department,
Corporation Street, Lincoln.
11th December, 1921.

The Royal Infirmary, Sheffield. (363 Beds).

The weekly Board of Management invite applications for the posts of CASUALTY OFFICER, and EAR, NOSE AND THROAT HOUSE SURGEON. The salary attached to these appointments is £150 per annum, with board and residence. Applications, together with copies of recent testimonials, should be addressed to

Board Room, JNO. W. BARNES,
19th December, 1921. Secretary.

Leeds Public Dispensary.

Wanted, SENIOR RESIDENT MEDICAL OFFICER (male). Must have held posts of Resident Physician and Resident Surgeon. Salary £250 per annum, with board, residence and laundry. Separate sitting room. Applications, with copies of three recent testimonials, to be addressed to the Secretary of the Faculty, Public Dispensary, North Street, Leeds.

Leeds Public Dispensary.

Notice is hereby given that the Special Election Committee will elect an HONORARY SURGEON to the Institution on Thursday, January 19th. Applications to be sent in by Saturday, January 14th, addressed to the Chairman of the Election Committee, Public Dispensary, North St., Leeds.

Metropolitan Borough of FULHAM.

APPOINTMENT OF MEDICAL OFFICER OF HEALTH.

The Council of the Metropolitan Borough of Fulham invite applications for the appointment of Medical Officer of Health for the Borough, at an inclusive commencing salary of £900 per annum, rising by eight annual increments of £25 to £1,100 per annum; duties to commence on the 17th April, 1922, when the present Medical Officer of Health is due to retire.

Candidates must be registered medical practitioners, and possess the qualifications required by the Public Health (London) Act, 1891, and the Regulations of the Ministry of Health. Practical experience in the duties of a Medical Officer of Health is desirable.

The Officer appointed will be required to devote the whole of his time to the duties of the office, not to engage in private or consulting practice, to attend at the offices of the Council daily, and otherwise to discharge all the duties of the office in accordance with the Regulations of the Ministry of Health and the Standing Orders of the Council.

He will also be required to waive all claims to superannuation under the Superannuation (Metropolis) Act, 1886, and he must pass satisfactorily the usual medical examination as to fitness, and after appointment he must reside within the Borough or within one mile of the boundary thereof.

The appointment will be subject to the approval of the Ministry of Health, and the person appointed shall agree to give three months' notice previous to resigning the office, or to forfeit such sum as may be agreed upon as liquidated damages.

Applications must be made on forms to be obtained from the undersigned, accompanied by copies of not more than three recent testimonials, which must reach me, endorsed "Medical Officer," not later than Saturday, the 17th day of January, 1922.

Canvassing members of the Council, either directly or indirectly, will be definitely considered a disqualification.

J. PERCY SHUTER,
Town Hall, Fulham, S.W. 6. Town Clerk.
14th December, 1921.

County Borough of Bolton.

ASSISTANT MEDICAL OFFICER OF HEALTH AND SCHOOL MEDICAL OFFICER.

The Education Committee invite applications for the appointment of an Assistant Medical Officer of Health and School Medical Officer.

The person appointed will be required to assist the Medical Officer of Health in carrying out the work of the Medical Examination of School Children under the Education (Administrative Provisions) Act, 1907, and also when not occupied in school work, to assist the Medical Officer of Health in other Public Health work, if required so to do. He must be prepared to devote the whole of his time to the duties of the office and not engage in private practice.

Preference will be given to the applicants who—
(a) Have had some definite experience in School Hygiene;
(b) Have enjoyed special opportunities for the study of children; and
(c) Have a special knowledge of Diseases of the Eye and Ear. The possession of a Diploma in Public Health will be an additional qualification.

The salary will be £400 per annum, rising by annual increments of £25 to a maximum of £500 per annum, plus bonus. (The bonus at present paid is in accordance with the Civil Service War Bonus Award 1921).

Applications, endorsed "Assistant School Medical Officer," stating age, qualifications and previous experience, and accompanied by copies of not more than three recent testimonials, must be received by me not later than Wednesday, 11th January, 1922.

Canvassing, either directly or indirectly, will be a disqualification.

Dated this 13th day of December, 1921.

FRED. WILKINSON,
Education Officer, Director of Education,
Nelson Square, Bolton.

St. Marylebone Hospital, Ladbroke Grove, W. 10.

A THIRD ASSISTANT MEDICAL OFFICER required (by January 5th if possible). The Hospital has 760 beds, contains a very wide range of clinical material, both acute and chronic, and has a consulting staff of eleven members.

Good off-duty time, quiet quarters, garden with grass and hard tennis courts. Salary £300 per annum. Apply, MEDICAL SUPERINTENDENT. Interview by appointment only. Telephone: Park 4534.

Chartham Mental Hospital, near Canterbury.

Wanted, 2nd ASSISTANT MEDICAL OFFICER with previous experience. Salary £350 to £400 per annum, with board, lodging, washing, etc., valued at £209 per annum. Applications to be sent to the Medical Superintendent at once.

Wanted, an Outdoor

ASSISTANT in Colliery and General Practice in Northumberland, to live at Branch. £400 per annum, with Share of Branch profits. Good furnished house, with garden, pleasantly situated. Cycle and motor-cycle. Must be British, steady, and energetic. Usual bond. Give experience and recent references.—Address, No. 6614, BRITISH MEDICAL JOURNAL Office, 429, Strand, W.C.

Wanted, Outdoor Assistant-

SHIP or MANAGEMENT OF BRANCH, by M.B. Young, married. Ex-H.S. Experienced in private and panel practice. Good surgical experience. State terms.—Address, No. 6610, BRITISH MEDICAL JOURNAL Office, 429, Strand, W.C.

Wanted. — Single Outdoor

ASSISTANT at once, to reside at Surgery, for general practice in South Wales. No collieries. Salary £450. Usual bond. State age, experience and references.—Address, No. 6626, BRITISH MEDICAL JOURNAL Office, 429, Strand, W.C. 2.

Wanted.—Outdoor Assistant-

SHIP in the Midlands by a young Medical man at present in Birmingham. Panel and private experience, well received. One with some prospects preferred. Address, No. 6624, BRITISH MEDICAL JOURNAL Office, 429, Strand, W.C. 2.

Wanted.—Indoor Assistant

in country Practice Yorks. Must learn to drive car. Youngish man preferred. Usual bond. £350 all found.—Address, No. 6621, BRITISH MEDICAL JOURNAL Office, 429, Strand, W.C. 2.

Wanted, Indoor Assistant in

a general practice in the Midlands. Must be of British nationality.—Address, No. 6623, BRITISH MEDICAL JOURNAL Office, 429, Strand, W.C.

M. D. (Lond.), requires

ASSISTANTSHIP with view to Partnership. Experienced in general practice and surgery. Married. Under 30.—Address, No. 6616, BRITISH MEDICAL JOURNAL Office, 429, Strand, W.C. 2.

M. B., B.S., M.R.C.P. (Edin.)

desires ASSISTANTSHIP, preferably with view in non-dispensing practice. R.A.M.C. 4½ years. Large hospital experience. Age 30, unmarried.—Address, No. 6615, BRITISH MEDICAL JOURNAL Office, 429, Strand, W.C. 1.

M. B., Ch.B., Glasgow (25),

single, ex-H.S., experienced in general practice, DESIRES ASSISTANTSHIP with view to partnership or succession.—Address, No. 6622, BRITISH MEDICAL JOURNAL Office, 429, Strand, W.C.

Sanatorium Scheme.—Doctor

required to join commercial man in unique scheme, consisting of colony of 12 recently erected large, well-built modern bungalows, accommodating at least 100 patients in separate rooms. All modern conveniences, with bathrooms, electricity, telephones, garage, etc. Situated on a low cliff within few yards of the sea, about one mile from a town, and few minutes from a station. Suitable climate. Tennis, golf, and other sports facilities available. Capital £15,000, of which advertiser would provide half, and act as Secretary. Profits should amount to at least £5,000 per annum. Address, No. 6532, BRITISH MEDICAL JOURNAL Office, 429, Strand, W.C. 2

Lady requires daily post in

London as CONSULTING-ROOM ATTENDANT. Accustomed front door, telephone, care of instruments, &c. 2 years' experience with Doctor. Book-keeping if desired.—Apply, "T. T." 51 Berkeley Avenue, Reading.

LOCUM TENENS

PROVIDED

AT AN HOUR'S NOTICE.

Apply to

Mr. W. S. ATKINS

(Late of ARNOLD & SONS, London)

43, BEDFORD STREET, STRAND, W.C. 2.

Telegraphic Address:

"Positions, Wesrand, London."

Telephone: 229 Regent.

FOR LOCUM TENENS APPLY TO**Mr. PERCIVAL TURNER**

The Oldest and only Agent who for 40 years has supplied substitutes at short notice without fee to principals.

4, ADAM STREET, STRAND, LONDON, W.C. 2

Tele.: "Epsomian, London." Phone: Gerrard 399

After 5 p.m.—Phone: Epsom 695.

The utmost care is exercised in recommending only

LOCUM TENENS

OF

UNIMPEACHABLE CHARACTER.

JOHN BELL & CROYDEN, LTD.

INCORPORATING

ARNOLD & SONS,

Transfer Department, 6, Giltspur Street, London, E.C. 1.

Lady Dispensers supplied,

qualified, experienced, and trained in Bacteriological Laboratories of the LONDON COLLEGE OF PHARMACY FOR LADIES (conducted by Medical Men for the supplying of Hospitals and the Profession with Dispensers). Preparations for Examinations.—7, Westbourne Park Road, W.

Dispenser, lady (Hall),

experienced. Disengaged shortly. Please state salary.—Address, No. 6618, BRITISH MEDICAL JOURNAL Office, 429, Strand, W.C. 2.

JOHN BELL & CROYDEN, LTD.

INCORPORATING

ARNOLD & SONS

have a large number of Clients, highly qualified, and with

CAPITAL AT THEIR DISPOSAL,

desiring to acquire

PRACTICES OR PARTNERSHIPS,

Forward particulars to the General Manager, 6, Giltspur Street, London, E.C. 1.

Wanted. — Middle and

working-class PRACTICE in any pleasant residential district. Receipts over £1,000 a year. Medium sized house with garden preferred. Ample capital available.—Apply, PEACOCK & HADLEY, 19, Craven Street, Strand, W.C. 2. (No charge unless sale effected.)

Wanted, Private and Panel

PRACTICE in London or Suburbs. Receipts £2,000. Panel patients over 1,500. Nice house with garden in nice neighbourhood. Can pay £2,000 or more down.—Address, No. 6342, BRITISH MED. JOURNAL Office, 429, Strand, W.C. 2.

Wanted.—Large panel

PRACTICE, in London or provincial town. Receipts fr m £1,500 to £1,000 a year. Necessary capital available. Early possession desired.—Apply, PEACOCK & HADLEY, 19, Craven Street, Strand, W.C. 2. (No charge unless sale effected.)

Wanted.—Panel Practice in

London. Receipts about £1,500 a year. Capital immediately available. Early possession desired.—Address, No. 6617, BRITISH MEDICAL JOURNAL Office, 429, Strand, W.C. 2.

Wanted by M.B., B.S., a

PRACTICE of about £1,500 with some panel in a suburb or central part of London.—Apply, BLUNDELL & Co., Walter House, 418/422, Strand, W.C. 2.

Wanted by M.D., D.P.H.,

PRACTICE of about £1,500 little or no panel. Coast town, and house on rental preferred. Introduction. Capital available. Address No. 6627, BRITISH MEDICAL JOURNAL Office, 429, Strand, W.C.

Wanted. — Practice or

PARTNERSHIP, with Panel, London preferred. Aged 28. About £1,000 available.—WATSON, 313, High Holborn, London, W.C. 1.

For Disposal.—A good Prac-

TICE is not always to be had directly, but Mr. PERCIVAL TURNER can generally offer applicants something suitable. Nearly all the best Practices are sold by him without being advertised.—Full information free on application to 4, Adam St., W.C. 2.

Aberdeen.—West-End

PRACTICE for Sale, through death.—Apply, EDMONDS & LEDINGHAM (Advocates), 1, Golden Square, Aberdeen.

London, W.—£2,400 a year.

Very old-established. Panel 1,200. Corner house on lease or can be bought. Price only £3,500.—Apply, No. 7080, Mr. PERCIVAL TURNER, 4, Adam Street, Strand, W.C. 2.

Electro-Medical Practice for

SALE, owing to sudden death of Dr. McKendrick, Southport. Splendid opportunity.—Full particulars from Mr. R. LEACH, 9, Duke Street, Southport.

Borneo. — Unopposed, in

important town, increasing. Income £500—£800. Living cheap. No night work. No taxes. Plenty English society. Moderate terms.—Apply, No. 7062, Mr. PERCIVAL TURNER, 4, Adam Street, Strand, W.C. 2.

London, N. — A Non-panel

PRACTICE situated in a good district producing over £1,600. Fees 5/- upwards, very good appointments held. No midwifery. Ample scope for an energetic man. Excellent house in central position containing five bedrooms, etc. Premium 1½ years purchase. Premium for house £2,000. Quote folio 509, Mr. W. S. ATKINS, Medical Transfer Agency, 43, Bedford Street, London, W.C. 2.

London.—Over £2,000 a year.

Cash and panel PRACTICE. No midwifery. Good premises; main road. Premium 1½ years' purchase.—Apply, No. 7072, Mr. PERCIVAL TURNER, 4, Adam Street, Strand, W.C. 2.

Lancashire, large town. —

Two partners offer for disposal compact middle and working-class PRACTICE 40 years old, easily and economically worked. Average receipts, £3,500 p.a.; visits, 3s. to £1 1s.; midwifery, limited, £2 2s. to £4 10s.; panel, 2,000. Two suitable houses to lease or buy. Good hospital. Premium 1½ years' purchase. Excellent opening for two. Please state qualifications, experience, and reference.—Address, No. 6210, BRIT. MED. JOUR., 429, Strand, W.C. 2.

Death Vacancy.—S.E. Coast.

About £2,000 a year. Old-established PRACTICE. Good appointments held. Locum in charge.—Apply, No. 7091, to Mr. PERCIVAL TURNER, 4, Adam Street, Strand, W.C. 2, who has personally visited and investigated books, &c.

Required at once.—General

PRACTICE in London or Suburbs can put down £350 and balance by instalments. Write in confidence, Mr. W. S. ATKINS, Medical Transfer Agency, 43, Bedford Street, Strand, W.C. 2.

West of England.—£2,400

a year. Very old-established PRACTICE, unopposed. Panel over 1,000. Several appts. Large detached house, garden, orchard, &c. Rent under £1,000. Good residential district. All sport. Price only £3,000.—Apply, No. 7092, Mr. PERCIVAL TURNER, 4, Adam Street, Strand, W.C. 2.

Required at once.—Practices

and PARTNERSHIPS.—Mr. W. S. ATKINS (late of ARNOLD & SONS, London), has a large number of Clients who are seeking Practices and Partnerships, and wish to settle down before the New Year.—Send full particulars, in confidence, to Mr. W. S. ATKINS, Medical Transfer Agency, 43, Bedford Street, Strand, London, W.C. 2.

West of England.—£700 a

year. Old-established, unopposed. Panel 500. Very little midwifery. Great scope. Beautiful district. All sport. Rent £35. Premium 12 years' purchase.—Apply, No. 7094, Mr. PERCIVAL TURNER, 4, Adam Street, Strand, W.C. 2.

Required in London or

Suburbs General PRACTICE with Panel, producing over £1,000 p.a. Nice house at rental. Send full details in confidence to Mr. W. S. ATKINS, Med. Transfer Agency, 43, Bedford St., Strand, W.C.

To Purchasers.—Do not Buy without expert assistance. With 40 years' experience Mr. PERCIVAL TURNER can advise in all cases. Terms free on application to 4, Adam Street, Strand, W.C.2. Telephone: Gerrard 399. Telegrams: "Epsomlam London."

Wanted by M.B.Camb., F.R.C.S., aged 33, a PARTNERSHIP or PRACTICE in town or country town in South of England, with scope for Surgery. Income about £1,000.—Apply, BLUNDELL & Co., Walter House, 418/422, Strand, W.C.2.

Wanted, Partner.—Panel 2,200; 1/2 share of over £2,500 at 1 1/2 year's purchase, part on easy terms. Preliminary assistantship.—Address, No. 6613, BRIT. MEDICAL JOURNAL Office, 429, Strand, W.C.2.

A Surgeon is required as PARTNER in a good general country practice. Great scope, Cottage Hosp., all sports. Suitable house with garden available. Succession to whole in a few years.—Address, No. 6620, BRITISH MEDICAL JOURNAL Office, 429, Strand, W.C.2.

Medical Man, giving up county-class practice in the country, and desirous of coming to London, wishes PARTNERSHIP in West-End Practice, ample capital.—Address, No. 6611, BRITISH MEDICAL JOURNAL Office, 429, Strand, W.C.2.

Partner wanted in mixed Practice within 10 miles of London. Young, energetic man required. Share equals about £1,000 p.a.—Address, No. 6536, BRITISH MEDICAL JOURNAL Office, 429, Strand, W.C.2.

Two Partners wanted in large panel and industrial Practice within easy reach of Liverpool and Chester. Share of £1,000 each. Great scope for increase. Premium £1,500 cash.—Address, No. 6590, BRITISH MEDICAL JOURNAL Office, 429, Strand, W.C.2.

Urgent.—Partner wanted in a good class old-established Non-dispensing PRACTICE in first-class Residential District within an hour of London. Share worth £1,250 a year, for Sale at first for two years' purchase. Good house and garden available. A graduate preferred, married, and about 30 years of age.—Apply, by letter only, No. 7083, c/o Mr. PERCIVAL TURNER, 4, Adam Street, Strand, W.C.2.

INCOME TAX.—£75 SAVED. We did this for one Medical Client. We got the assessment REDUCED and saved our client £75. We are continually saving large sums of money for Doctors, &c. Let us handle your case. We check Assessments FREE.—HARDY & PONTET, Taxation Consultants, Office B., 50, Bedford Row, London, W.C.1.

The Proprietor of Patent No. 2217 of 1914, A. C. Eggers, for "Improvements in Rectal Syringes," is anxious to ENTER INTO NEGOTIATIONS with a firm or firms for the Grant of Licences on reasonable terms or to treat for the Sale of the Patent outright. Full particulars can be obtained on application to J. S. WITHERS & SPOONER, Chartered Patent Agents, 51-52, Chancery Lane, London, W.C.2.

Wanted, British Medical Journal, 1914 and 1915 complete; 30th December, 1916, 26th October, 1917, January to May and 27th December, 1919, 28th February and 3rd July, 1920, and 19th February, 1921. Please report price to B. F. STEVENS & BROWN, 4, Trafalgar Square, London, W.C.2.

To Let, in Queen Anne Street, well equipped CONSULTING ROOMS, one with dark room, whole or part time. Low rent.—Address, No. 6538, BRITISH MEDICAL JOURNAL Office, 429, Strand, W.C.2.

Upper Tooting (Ready to step into). Doctor having purchased larger Practice is willing to sell his double-fronted modern RESIDENCE, situated in most densely and rapidly growing neighbourhood. 6 beds, large dining and drawing rooms, Surgery, all fitted electric. Price £1,000 all in.—Write, 17, Veronica Road, Balham.

Excellent Furnished Room, with use of Waiting Room, Telephone, etc. is available at a city clinic. Suit a doctor or dentist. Write Box 1246. Sells Advertising Offices, Fleet Street, E.C.4.

Bed-Sitting Room in Doctor's House, adjoining Harley Street. Terms 2 guineas weekly, including service and boots. Meals extra as ordered. Part-time Consulting Room also available if required.—Address, No. 6445, BRITISH MEDICAL JOURNAL Office, 429, Strand, W.C.2.

TO THE PROFESSION.

Medical men requiring stylish DRESS can secure perfectly tailored clothes made to measure in 24 hours. Finest materials at most reasonable prices.

SUITS AND OVERCOATS in great variety from £6-6s. Patterns post free. A PERFECT FIT GUARANTEED.

SPECIAL OFFER. Black or Grey Jacket and Vest for professional or evening wear, £4 14s. 6d.

Visitors to London can be measured and fitted the same day.

HARRY HALL, 207, OXFORD STREET, W. 1.
'PHONES: MUSEUM 820-821, CITY 2086.

Liveries.—Chauffeurs' Over-

COATS, Black and Grey Melton, best quality, wool lined, 54 gns.; BRELOCHES, £2/17/6; CAP, 15/- to match; Block Hide LEGGINGS, 18/6. Patterns cloth forwarded, or goods sent on approval. (Est. 30 yrs.)—T. & M. ARMSTRONG, 33, Connaught St., W.2.

To be Let, unfurnished, at

£300 a year, in FOR LAND PLACE, a gentleman's HOUSE, for many years tenanted by a doctor who has had the privilege of exhibiting his name plate.—Apply, Sole Agents: SAMUEL B. CLARK & SON, 8, New Cavendish Street, Portland Place, W.1.

L.D.S., giving up motoring

through health, desires to sell 1921 ARROL-JOHNSON ALL-WEATHER CAR. Bought end of July. Not done 1,030 miles, perfect, as new, very cheap. Suitable for a surgeon or doctor.—Address, No. 6619, BRIT. MED. JOUR., 429, Strand, W.C.2.

9 h.p. De Dion Coupé, latest

type. In first-class running order as trial run will prove. Fitted with most expensive and excellent all weather body. £190. Will accept old type De Dion as part payment.—Write OWNER, 17, Veronica Road, Balham.

1913 De Dion, 7-9 h.p.,

FOR SALE; 2-3 seater with double dickey; ideal doctor's car, in very fine condition. Annual tax, £3 15s.; clock, speedometer, five over-size tyres. £140.—Crow Bros., Guildford.

Perry Coupé 1917, body

finished grey, leather upholstery to match, Lucas lighting, in perfect condition. What Offers? TAYLOR & SON, Ltd., Station Road, Kettering.

1921, 15.9 h.p. Humber, 4-

seater TOURING CAR, finished Mole, C.A.V. lighting and starting, speedometer, clock, etc. Luxurious Car. What offers?—DAVIS, Hazelwood, Argyle Street, Kettering.

New Studebaker, light six,

four seater, Electric Lighting and Starting, Speedometer, full equipment. £490. List £530. Address No. 6628, BRITISH MEDICAL JOURNAL Office, 429, Strand, W.C.2.

Henly & Co., can supply any

make of Car, for Cash or Deferred Terms. Special Agencies with Morris Cowleys, Angus Sansons, Humbers, Standards, Citroens. Exchange arranged. Enquiries invited.—91, Great Portland Street, W. Langham 1926.

The Hospital for Sick

CHILDREN,
Great Ormond Street, London, W.C.1.

A CASUALTY OFFICER is required on the 1st February, 1922. Candidates must be registered medical practitioners, and are invited to send in their applications, addressed to the Secretary, before 12 o'clock, on Monday, 2nd January, 1922, accompanied by copies of not more than three testimonials given specially for the purpose.

The appointment is made for one year, but may be held, subject to re-election, for a period of three years. The appointment is non-resident, and whole time. Salary £400 per annum with luncheon.

All candidates must appear before the Joint Committees at their meeting on Wednesday, 4th January, 1922, at 5 p.m. precisely.

Forms of application and copies of the rules may be obtained from the Secretary at the Hospital.

By order of the Committee of Management,
JAMES MCKAY, Acting Secretary.
December, 1921.

Gloucester County Mental

HOSPITAL.

JUNIOR A.M.O. Wanted. Single; male; British. Salary £350 per annum, with board, apartments and laundry. Subject to the provisions of the Asylum Officers Superannuation Act, 1909.—Apply, stating age and qualifications, with copies of three recent testimonials, to the MEDICAL SUPERINTENDENT.

St. John's Hospital for

DISEASES OF THE SKIN.
49, Leicester Square, W.C.2.

A COURSE of PRACTICAL INSTRUCTION in the BACTERIOLOGY, MYCOLOGY and HISTO-PATHOLOGY of the SKIN will be held in the Laboratories of the London School of Dermatology, St. John's Hospital for Diseases of the Skin, 49, Leicester Square, W.C.2, commencing the second week in January.

Fees for twelve weekly sessions, 4 guineas (Tuesday or Friday afternoons, 2 to 4 p.m.).

There are also facilities in the Laboratories for more advanced work and/or research work.

Applications should be made to the SECRETARY.

Assistant Medical Officer

Required at SPRINGFIELD MENTAL HOSPITAL, Wandsworth Common, S.W.17., with Diploma of Psychological Medicine or be prepared to obtain same within two years. Age limit 75 years. Salary £625 per annum, including war bonus and emoluments valued at £200 per annum. No married quarters provided. The appointment subject to Asylum Officers' Superannuation Act. Applications to be made to the MEDICAL SUPERINTENDENT.

Beckenham Education

Committee require the services of a Part-time OPHTHALMIC SURGEON to examine the eyes and prescribe glasses for school children suffering from defective eyesight. The candidate appointed will be required to attend at times to be arranged at the School Clinic. Salary at the rate of 3 guineas per session of 2 1/2 hours. It is estimated that there will be from 20 to 30 sessions per annum.

Applications, stating age, qualifications and experience, and accompanied by two testimonials of recent date, should be sent to the SECRETARY, Education Committee, Beckenham, not later than Wednesday, 11th January, 1922.

7th December, 1921.

County Hospital, Lincoln.

Wanted, 1st January, 1922, a JUNIOR HOUSE SURGEON (Male). Salary at the rate of £150 per annum, rising to £200 per annum at the completion of six months' approved service. Board, residence and washing will be provided.

Candidates for the appointment must be duly registered under the Medical Acts.

Applications, stating age and other particulars, with copies of not more than three recent testimonials, should be addressed to the undersigned, from whom any further particulars may be obtained.

ARTHUR MOORE,
Lincoln. Secretary-Superintendent.
December 27th, 1921.

Walsall General Hospital.

The Committee invite applications from ladies for the post of JUNIOR HOUSE SURGEON and ANÆSTHETIST which will shortly become vacant. Salary £175 per annum, with board, residence and laundry.

Candidates, who must possess registered qualifications, should forward applications, stating age, qualifications, and experience, together with copies of three recent testimonials to the undersigned.

WALTER FRANCOMBE, Secretary.

The Miller General Hospital

FOR SOUTH-EAST LONDON.
Greenwich Road, S.E.10.

HOUSE PHYSICIAN required (three other residents) to commence duty about the middle of January. Salary £150 per annum, with board, lodging and laundry. Applications, stating age, qualifications and experience, accompanied by copies of not more than three recent testimonials, to be sent to the SECRETARY.

December 30th, 1921.

London Temperance Hospital

Applications are invited for the post of MALE RESIDENT CASUALTY OFFICER, which will be vacant on January 12th.

Salary £150 per annum, with residence, board, &c.

There is a large Casualty Department which offers very large scope for medical and surgical experience and also in all special departments.

Total attendances last year over 83,000.

Applications to be sent in not later than January 7th, 1922, addressed to the Secretary.

Central London Throat, Nose

AND EAR HOSPITAL, Gray's Inn Rd., W.C.1.

A vacancy occurs for FIFTH ASSISTANT SURGEON. Applications should be forwarded not later than January 7th to RICHARD KERSHAW, Secretary.

It is expected that applications will be received from present surgical registrars to the Hospital.

APPOINTMENTS—Important Notice.

(a) British Islands.

Medical Practitioners are requested not to apply for any appointment referred to in the following table without having first communicated with the Medical Secretary of the British Medical Association, 429, Strand, London, W.C. 2.

Town or District.	Town or District.	Town or District.
CONTRACT PRACTICE.		
ENGLAND.		
MIDDLESBOROUGH, SOUTH BANK, & ESTON. (Medical Aid Associations or Workmen's Clubs.)		
NEWBOTTLE COLLIERY MEDICAL FUND. Fence Houses, Durham. (Colliery Appointment.)		
WALES.		
ABERTRIDWR, GLAMORGAN. Windsor Colliery. (Medical Scheme.)		
GARW VALLEY, GLAMORGAN. (Workmen's Medical Scheme.)		
GILFACH GOCH, GLAMORGAN. (Workmen's Medical Scheme.)		
	WALES (continued.)	
	LLWYNPIA, CLYDACH VALE, PENYGRAIG, GLAMORGAN. (Workmen's Medical Scheme.)	
	MARDY, GLAMORGAN, (Workmen's Medical Scheme.)	
	OAKDALE, MON. (Medical Officer for Model Village and Collage Hospital.)	
	OGMORE VALLEY, GLAMORGAN. (Workmen's Medical Scheme.)	
	TONDU and ABERKENFIG, GLAMORGAN. (Workmen's Medical Scheme.)	
	TONYREFAIL and COED BLY, GLAMORGAN. (Workmen's Medical Scheme.)	
		WALES (continued.)
		TREORCHY, PARK & DARE (GLAMORGAN). (Workmen's Medical Scheme.)
		YNYSYBWL, GLAMORGAN. (Workmen's Medical Scheme.)
		PUBLIC HEALTH.
		BURGH OF STIRLING. (M.O.H. Tuberculosis, Maternity and Child Welfare, and V.D. Officer.)
		PORTSMOUTH EDUCATION AUTHORITY. (Assistant School Medical Officer.)
		PLYMOUTH EDUCATION AUTHORITY. (Assistant School Medical Officer [Lady].)

(b) South Africa.

Town or District

NATAL PROVINCIAL ADMINISTRATION.
GOVERNMENT HOSPITAL, DURBAN.
(Senior Resident Physician.)
(Senior Resident Surgeon.)

(c) Other Colonial Appointments.

Medical practitioners are requested not to apply for any appointment referred to in the following table without having first communicated with the Honorary Secretary of the Division or Branch named in the second column, or with the Medical Secretary of the British Medical Association, 429, Strand, London, W.C. 2.

Town or District.	Hon. Sec. of Division or Branch.	Town or District.	Hon. Sec. of Division or Branch.	Town or District.	Hon. Sec. of Division or Branch.
NEW SOUTH WALES. (All Friendly Society Appointments.)	Dr. R. H. TODD (Hon. Sec., New South Wales Branch), B. M. A. Building, 30-34, Elizabeth Street, Sydney, N.S.W.	QUEENSLAND. (Brisbane Associated Friendly Societies' Institute.)	Dr. R. MARSHALL ALLAN (Hon. Sec., Queensland Branch), Adelaide Street, Brisbane.	VICTORIA. (All Institute or Medical Dispensaries; Manchester Unity Independent Order of Oddfellows).	Dr. FRANK DAVIES (Hon. Sec., Victorian Branch), Medical Society Hall, B. Melbourne, Victoria.
				WESTERN AUSTRALIA. (All Appointments.)	Hon. Sec., Western Australian Branch, No. 6, Bank of New South Wales Chambers, St. George's Terrace, Perth.

Address: 429, Strand, W.C.2.
December 23rd, 1921.

By order of the Council of the British Medical Association,
ALFRED COX, Medical Secretary.

The Bury Infirmary.

Wanted immediately, a JUNIOR HOUSE SURGEON (Male) who must have both Medical and Surgical qualifications. Salary £150 per annum, with board, residence, and washing.

Among other duties the person appointed will have charge of the Children's Ward, the Ophthalmic Department, Casualty and Out-patient's Department, and the administration of Anesthetics.

Applications, stating age and nationality, with testimonials, to be sent at once to the Honorary Secretary, Infirmary, Bury, Lancs.

Royal Salop Infirmary.

(Containing 120 Beds.)

HOUSE SURGEON required about the middle of January, 1922. Candidates are invited to send their applications, with not less than three recent testimonials, to the undersigned as early as possible.

There are two Resident Medical Officers, of whom the House Surgeon is senior.

Candidates must be doubly qualified and duly registered.

Salary £275 per annum, with board, residence and laundry.

Shrewsbury. ALFRED SUGDEN, Secretary.
12th December, 1921.

The Royal Liverpool CHILDREN'S HOSPITAL.

Myrtle Street, Liverpool.

The Council of the above Hospital invite applications for the post of HON. ASST. SURGEON. Candidates with special training in Orthopedic Surgery will receive preferential consideration. Applications to be lodged with the Chairman at the Hospital before 1st February, 1922.

Union of South Africa.

VACANCY FOR A MEDICAL OFFICER AND NATURALIST ON H.M. SLOOP CROZIER ENGAGED ON HYDROGRAPHIC SURVEY AND FISHERY RESEARCH WORK.

Applications are invited from qualified persons for the combined duties of the above mentioned post.

Salary. As for a Lieutenant Commander, viz:—
If single, pay 32. 6d.; servant allowance 1s., plus medical staff allowance 5s. equal to 38s. 6d. a day or £702 2s. 6d. per annum.

If married, as for single men, plus quarters and fuel and light allowance, totalling 3s. 6d. a day for wife and family (if not provided in kind) equal to 42s. a day or £766 10s. per annum.

Maternity allowance of 2s. a day is paid in addition in each case.

Conditions. Engagement to be for 2 years from the date of arrival in, to the date of departure from, South Africa; with the option on the part of the Government to extend for a further period of one year.

Pay of 32s. 6d. a day only to be paid during the voyage to South Africa. Allowances to commence from the date of arrival at Simonstown.

Duty to be assumed on or about 1st April, 1922.

Travel Concessions. Free 1st class steamer passage to and from South Africa at beginning and termination of contract. Similar concessions in respect of wife and not more than 4 children under 18 years in the case of girls and 16 years in the case of boys.

Applications, together with copies of testimonials, all in duplicate, should be lodged not later than 16th January, 1922, with the Secretary, Office of the High Commissioner for the Union of South Africa, Trafalgar Square, London, W.C. 2, from whom forms of application may be obtained.

Bracebridge Mental Hospital,

near Lincoln.

MEDICAL SUPERINTENDENT.

Applications are invited for the post of Medical Superintendent to the above Institution, at a commencing Salary of £750 per annum, rising by annual increments of £50 to £900 per annum, with furnished house, coal, gas, light, laundry, and fruit and vegetable produce. For Superannuation the Emoluments of the Medical Superintendent are valued at £300 per annum.

Applicants must be not more than 40 years of age, and must be fully qualified, with experience of the duties in a public Mental Hospital.

Applications, accompanied by copies of not more than three recent testimonials, and endorsed "Medical Superintendent," should be delivered to me not later than Wednesday, the 4th January, 1922. Canvassing members of the Committee of Visitors will be regarded as a disqualification.

HAROLD E. PAGE,

Clerk to the Committee of Visitors.

5 & 6, Bank Street, Lincoln.

Free Eye Hospital,

Southampton.

Wanted, HOUSE SURGEON, male or female. Must have some knowledge of eye work. Salary £150 per annum, with board, lodging and laundry. Apply, Edward C. REDMAN, Secretary.

The Board of Management of

the PUTNEY HOSPITAL invite applications for the post of HON. SURGEON.

Applications to be made to the Hon. Secretary, Putney Hospital, Lower Common, Putney, S.W. 15.

Metropolitan Asylums Board. THE DOWNS SANATORIUM, Sutton, Surrey.

The Metropolitan Asylums Board invite applications for the appointment of JUNIOR ASSISTANT MEDICAL OFFICER (unmarried) in their Tuberculosis Service. The present vacancy is at the Downs Sanatorium, Sutton Surrey, which has 292 beds and 4 Medical officers, and is 12 miles from London. Previous tuberculosis experience is not essential, but preference will be given to candidates under 30 with general hospital experience.

Salary £515 6s. per annum including bonus. The candidate appointed will be required to reside in the institution and to pay for board, lodging and washing at the rate fixed from time to time by the Board's Finance Committee. At present the rate is £130 per annum.

Applications, to be made not later than 10 a.m. on Thursday, 12th January, on forms obtainable from the Clerk, Metropolitan Asylums Board, Embankment, London, E.C.4., by forwarding stamped addressed foolscap envelope.

20th December, 1921.

Manchester Royal Infirmary.

RADIOLOGICAL REGISTRAR.

The Board of Management invite applications for the above appointment. Candidates must be fully qualified and registered. Preference will be given to those who hold the Cambridge Diploma in Radiology. The appointment (non-resident) is for twelve months, but the holder of the office is eligible for re-election for a further period of one year. Salary £250 per annum. Candidates must state age, and send twelve copies of their application and testimonials to the undersigned on or before Friday, 20th January, 1922.

By order, FRANK G. HAZELL,

Gen. Supt. and Secretary.

22nd December, 1921.

Derbyshire Royal Infirmary, Derby. (General Hospital, 320 Beds.)

Applications are invited for the following Resident Appointments—

HOUSE SURGEON.
ASSISTANT HOUSE SURGEON AND
CASUALTY OFFICER.

The appointments are tenable for six months, with a possibility of extension for a further period of six months. Salary £200 per annum, with apartments, board, &c. Applications, with copies of not more than five testimonials, to be sent to the undersigned not later than 14th January.

WALTER BANKS, M.B.

Superintendent and Secretary.

20th December, 1921.

City of London Hospital for DISEASES OF THE CHEST,

Victoria Park, E. 2.

(Bus, Tram and Train Cambridge Heath, G.E.R.)

Applications for Post of RESIDENT MEDICAL OFFICER (with copies of three testimonials) are invited to be sent to the undersigned on or before Monday, 16th January, 1922. The appointment will be for one year from 11th February, 1922, with eligibility for re-appointment, and subject to the rules and bye-laws of the Hospital. Salary at the rate of £250 per annum, with board, residence and laundry provided.

GEORGE WATTS, Secretary.

Severalls Mental Hospital, Colchester.

Required ASSISTANT MEDICAL OFFICER (temporary). Must be registered under the Medical Acts. Salary 7 guineas per week, with furnished apartments, board, attendance and washing.

Apply giving full particulars of qualifications, &c., to the Medical Superintendent.

Kent & Canterbury Hospital, Canterbury.

Applications for the post of HONORARY OPHTHALMIC SURGEON at the above Hospital are invited from gentlemen who are Graduates in Surgery of a University of Great Britain or Ireland, or Fellows or Members of the Royal College of Surgeons of England.

Applications, accompanied by copies of not more than six testimonials, must reach the undersigned on or before 12th January, 1922.

Further particulars of the appointment may be obtained upon application.

F. P. CARROLL, Secretary.

20th December, 1921.

Kent & Canterbury Hospital, Canterbury. (114 Beds.)

Required, on 6th January, RESIDENT MEDICAL OFFICER. Salary £175 per annum. The work is equally divided between two resident medical officers, and special opportunities exist for gaining experience in ophthalmic and venereal work.

Applications, with copies of testimonials, should be addressed to the undersigned.

F. P. CARROLL, Secretary.

20th December, 1921.

St. Mark's Hospital for CANCER, FISTULA, and other DISEASES of the RECTUM, City Road, E.C.1.

Part-time PATHOLOGIST required. For particulars apply to the SECRETARY.

St. Mark's Hospital for CANCER, FISTULA, and other DISEASES of the RECTUM, City Road, E.C.1.

X-RAY MEDICAL OFFICER required. For particulars apply to the SECRETARY.

The Directors of John Bell & Croyden, Limited incorporating ARNOLD & SONS

fully realise the importance of the Company's MEDICAL TRANSFER DEPARTMENT, and with a view of rendering to the Profession a service of the utmost efficiency, the Department has now been placed under the direct control of the Company's GENERAL MANAGER, whose experience of over 40 years in the City, will in future place at the disposal of the Profession generally a MEDICAL TRANSFER DEPARTMENT, the basis of which will be

EFFICIENCY—RELIABILITY—INTEGRITY and COURTESY
in all matters pertaining to

PURCHASE and SALE OF PRACTICES and in the SELECTION OF LOCUM TENENS.

Please address your communications to:—

**The General Manager, JOHN BELL & CROYDEN, Limited,
6, Giltspur Street, E.C.**

Telegraphic Address: Instruments, London."

DIRECTORS—

Telephone No. City 5210.

JOHN D. MARSHALL, M.P.S.
CLEMENT A. P. LANGHAM.

Sir SIDNEY R. ALEXANDER, M.D., J.P.
JAMES E. ARNOLD.
CHARLES V. FAVIELL.

WILLIAM I. LANGHAM.
JOHN R. WRETTS, Ph.C.

TELEPHONES:

London, 1277, Mayfair.
Manchester, 5213 Central.
Glasgow, 477 Central.
Dublin, 531 Ballsbridge.

NURSES MALE AND FEMALE

CAVENDISH TEMPERANCE MALE NURSES CORPORATION, LIMITED.

TELEGRAMS:

Tactear, London.
Surgical, Glasgow.
Tactear, Manchester.
Tactear, Dublin.

LONDON: 43, NEW CAVENDISH STREET. MANCHESTER: 176, OXFORD ROAD. GLASGOW: 26, WINDSOR TERRACE. DUBLIN: 47, MESPIL ROAD.
Superior trained Nurses for Medical, Surgical, Mental, Dipsomania, Travelling and all cases. Nurses reside on the premises, and are always ready for urgent calls, Day or Night. Skilled Masseurs and Masseuses and good Valet Attendants supplied.

Terms from £3 3s. 0d.

Apply, THE SECRETARY or LADY SUPERINTENDENT.

MALE NURSES

LONDON—8, Hinde Street, Manchester Sq., W.1.
MANCHESTER—257, BRUNSWICK STREET (Facing Owens College)
EDINBURGH—7, TORPHICHEN STREET

Terms from £3 13 6

ALL NURSES ARE FULLY INSURED AGAINST ACCIDENT.

TEMPERANCE CO-OPERATION, LTD.

TRAINED MALE NURSES AND VALET ATTENDANTS, FOR MENTAL MEDICAL, TRAVELLING AND ALL CASES

Telephones:

Telegrams:

London: 3297 MAYFAIR
Manchester: 4699 CENTRAL
Edinburgh: 2715 CENTRAL

ASSUAGED, LONDON
ASSUAGED, MANCHESTER
ASSUAGED, EDINBURGH

Please address all communications, W. WALSHE, Secretary



City of Birmingham.**MENTAL HOSPITAL SERVICE.****RUBERY HILL AND HOLLYMOOR MENTAL HOSPITAL.****VACANCY FOR A JUNIOR ASSISTANT MEDICAL OFFICER.**

Candidates must be legally qualified, single, age not exceeding 35 years.

The Hospital is approved for the purposes of the examinations for the Diploma of Psychological Medicine and the M.D. (Mental Diseases) of the University of London.

Facilities are provided for Research work.

Salary for the present appointment, £400 per annum, with apartments, board, laundry and attendance, valued pre-war for contribution purposes at £80 per annum.

Pensionable under the Asylum Officers' Superannuation Act of 1909.

Applications with copies of not more than three recent testimonials should, not later than January 10th, 1922, be forwarded to

T. C. GRAVES, B.Sc., M.D. Lond., F.R.C.S. Eng.,
The Medical Superintendent,
Rubery Hill Mental Hospital,
Rubery.

The General Hospital, Birmingham.

Applications are invited for the following Resident A. appointments:

HOUSE PHYSICIAN. Vacant January 15th, 1922.

HOUSE SURGEON to Special Departments (Skin and Venereal). Vacant now.

Further particulars on application.

Candidates, who must be fully qualified and registered, should send in their applications to the undersigned on or before January 2nd, 1922, together with certificates of registration.

RESIDENT MEDICAL OFFICER. Vacant

December 19th. Candidates must be Graduates of a University in the United Kingdom.

Salary £155 per annum.

The appointment will be made at 12 noon on Friday, January 6th, 1922, when candidates will be expected to attend.

Applications to be sent to the undersigned on or before January 2nd 1922.

A. H. LEANEY, House Governor.

Ancoats Hospital, Manchester.

The **RESIDENT SURGICAL OFFICERSHIP** (male) of this Hospital will become vacant on 1st February, 1922. Salary £250, with board, lodging, etc. Candidates must be fully qualified, and those with a record of previous resident appointments will be preferred.

A vacancy for a **HOUSE SURGEON** (male) will also occur on the 10th February, 1922. Candidates must be fully qualified. Salary £150, with board, lodging, etc.

Applications, with testimonials, to be forwarded to the undersigned by Monday, 16th January, 1922.

HERBERT J. DAFFOINE, Secretary.

Macclesfield General INFIRMARY.

Wanted, **SENIOR HOUSE SURGEON.**

Candidates must be doubly qualified and duly registered. Salary at the rate of £180 per annum, rising £10 annually to £200, with board, residence and washing. Applications, stating age and experience, together with copies of testimonials, to be sent to the SECRETARY.

Urgent.—Jenny Lind

HOSPITAL FOR CHILDREN, Norwich.
Appointment of **LADY RESIDENT MEDICAL OFFICER.** Salary £150 per annum, with board, furnished apartments, and laundry (not exceeding 5/- per week). Candidates must be fully qualified and registered. Duties to commence in January. Appointment to be for six months, and renewable for a similar term at the expiration thereof. Applications, stating age, nationality, and qualification, together with copies of not more than four testimonials, should be sent to the undersigned, from whom further information can be obtained.—
H. HARPER SMITH, Honorary Secretary, London and Provincial Bank Chambers, Norwich.
December 20th, 1921.

THE ASSOCIATION OF CERTIFICATED BLIND MASSEURS, 224-63, GREAT PORTLAND STREET, LONDON, W. 1.

(Telephone: LANGHAM 2542).

First President of the Association:

The Late Sir ARTHUR PEARSON, Bart., G.B.E.

Fully-qualified Blind Masseurs and Masseuses (trained at St. Dunstan's and the National Institute for the Blind) can be obtained on application to the Secretary.

ST. LUKE'S HOSPITAL.

ESTABLISHED 1751.

PRIVATE NURSING STAFF DEPARTMENT.

TRAINED NURSES FOR MENTAL and NERVOUS CASES can be had immediately. Apply to **LADY SUPERINTENDENT**, 19, Nottingham Place, London, W.1. Telephone: MAYFAIR 5420.

NORTHERN BRANCH.—Apply, **LADY SUPERINTENDENT**, 57, Clarendon Rd., Leeds. Phone: Leeds 2616.

St. John's and St. Thomas's

HOUSE.—Trained and experienced **MEDICAL, SURGICAL, MATERNITY NURSES** and **MASSEUSES** can be obtained by application, personally or by letter, to the Sister in Charge, 12, Queen's Square, W.C.1. (Tel. No. 7161 Museum), or to Matron, St. Thomas's Hospital (Tel. 4191 Hop). Telegraphic address: "Private Nurses, London."

Telephone: Langham 2728.
Telegrams: "Assistiamo, London."

NURSES MALE OR FEMALE.

TRAINED NURSES FOR MENTAL, MEDICAL, SURGICAL AND FEVER CASES.

Nurses reside on the premises and are available for urgent calls, Day or Night.

THE NURSES' ASSOCIATION

(In conjunction with the MALE NURSES' ASSOCIATION),

29, York Street, Baker Street, London, W.1.

(Mrs.) MILLICENT HICKS, Superintendent.
W. J. HICKS, Secretary.

THE LONDON TEMPERANCE**NURSES CO-OPERATION**

Telephone: MAYFAIR 2302.

Telegrams: "NURSLONTEM, LONDON."

Supplies Fully Trained Hospital Nurses, also

Mental and MALE Nurses

Nurses Insured against Accident.

APPLY, SECRETARY.

MENTAL NURSES

(MALE and FEMALE)

Telephone: MAYFAIR 2387.

Telegrams:

"ISOLATION, LONDON."

NURSES FULLY INSURED AGAINST ACCIDENT.

ASSOCIATION, Ltd.
8, Hinde Street,
Manchester Sq., W.1.

Superior Mental Nurses (Male and Female)
Supplied at a moment's notice Day or Night
for Nerve and Mental Cases.

Apply SECRETARY

BLUNDELL & CO.,

Walter House, 418-422, Strand, W.C.2.

(Entrance Bedford Street.)

Telephone: 7148 GERRARD.

Cable Address: (via Eastern) "RECALLABLE, LONDON."

LOCUMS SUPPLIED.

West End.—Electro

Therapeutic PRACTICE of £550 with unlimited scope. Practice has been let down but could very soon be doubled. Good house. Long lease. Rent covered by sub-letting.

Easy Terms.—Partnership

with success on. Half share of £2,400 in mining district near the sea. Premium £1,400 on easy terms.

South-West County.—Old

established PRACTICE in country town with cottage hospital in beautiful district. Practice doing over £1,000. Panel 850. Appointments £70. House with very nice garden. Rent £45.

London, N.E.—Very old

established PRACTICE of over £1,500. Appointments £220. Panel 1,000. Could be increased. Long lease. Rent £75. Premium £2,000.

Scotland.—Unopposed

PRACTICE of £1,500, of which £950 is from panel and appointments. Good house can be bought for £1,000.

Home County.—Middle and

working class PRACTICE of £1,050 increasing in nice town with cottage hospital, up the river. Panel 750. Rent £44.

S.W. London.—Partnership.

Third Share worth about £300, with half any increase. Good house and garden. Can be rented.

Surrey.—Third share of £2,000

in delightful residential district. Half share later. Surgeon could have hospital appointment.

N.E. London.—Cash and

panel PRACTICE of over £3,000. Panel 1,400. Convenient residence.

Glos.—Old-established

PRACTICE of £1,540 in beautiful district with mild climate. Panel 1,300. Comfortable house, with garden and garage, can be bought for £1,200, part on mortgage.

South Coast.—Partnership.

Half-share of £1,680 in favourite watering place, with Cottage Hospital. House can be rented. Good private practice with small panel.

Lines.—Unopposed Practice

of over £1,400. Panel 600. Good fees. House with good garage.

Scotland.—Practice in nice

country town. Receipts £1,200. Panel 450. Rent £50.

Lady Partner wanted for half

Share of £1,500, near London.

Within 20 miles.—Practice

of £1,280 average, in nice residential district. Excellent house. Rent £75. Scope for panel. Cottage hospital. Premium £1,550.

London, S.E.—Practice of

£1,650, including 1 200 panel, rapidly increasing. Long lease. Rent £50.

Wales.—Surgeon required as

PARTNER. Third Share of £3,000 in good town.

South Devon.—Old-estab.

good-class PRACTICE in suburb of favourite watering place. Receipts £1,200. Panel 750. Appointments £75. Little midwifery. Excellent house, with room for tennis court, can be bought.

Lancs.—Old-established, good

class, non-panel PRACTICE in best town. Receipts £1,600. Vendor retiring to specialise. Good house in nice position.

Scotland.—Increasing V.D.

PRACTICE now doing £1,300.

Sussex.—Practice of £600

held by vendor for 40 years in seaside place. House and Practice £3,100.

Yorks.—Agricultural

unopposed PRACTICE of £1,300 in nice part. Good house. Rent £50.

R.M.O. Required for Hydro.

To invest £2,000.

Purchasers stating their requirements can have other Particulars of Practices not advertised.

THE SCHOLASTIC, CLERICAL & MEDICAL ASSOCIATION, LIMITED,

(Established in 1880 by Mr. G. B. Stocker).

22, CRAVEN STREET, TRAFALGAR SQUARE, W.C.2.

Telegraphic Address: "TRIFORM, WESTRAND, LONDON."

Telephone No. 1854 (Gerrard).

Practices and Partnerships for Disposal (No charge to Purchasers).

DEATH VACANCY.—(1) Kent Coast. Very old-established PRACTICE £3,000 in small town. Good appointments and panel. Not much Midwifery. Very nice house with 6 bedrooms. Locum in charge.

SOUTH-WEST ENGLAND.—(2) Unopposed PRACTICE over £1,600 in small town, beautifully situated 600 feet above the sea level. Panel 670. Very good house (7 bedrooms) with nice garden. Premium 1½ years' purchase. Cottage Hospital. Scope for one desiring Surgery.

KENT.—(3) Small, well-established and increasing PRACTICE, well over £300 in Industrial Town. Small Panel. Rent of house £12 10s. Premium £400.

CHESHIRE.—(4) PRACTICE of £2,700 (or half-share with early succession) in clean manufacturing town. Panel 1350. Not much night work. Good house. Premium only £2,500.

PARTNERSHIP.—(5) (with preliminary Assistantship) in mixed Practice £2,400 in pleasant district North Riding Yorkshire, near coast. Panel 1800. Not much night work. One-half share would be sold for £1,400 with early succession if desired.

DEATH VACANCY.—(6) Surrey. Old-established PRACTICE about £1,400/£1,500 per annum, in good Residential District, under 15 miles from London. Very nice detached house (5 bedrooms), standing in its own grounds of over an acre. Rent £100 p.a.

NORTH OF ENGLAND.—(7) ASSISTANT required with view to Partnership in Practice about £3,000, in beautifully situated Country Town. Panel £1,000 or more. Assistant should be unmarried, well qualified, and keen on his work.

LONDON, N.W.—(8) PARTNERSHIP in good-class, non-dispensing Practice in outlying Residential District. No Panel. One-third share (about £1,000 p.a.) at 2 years' purchase; option to increase later. Partner should be aged about 35.

NORTH-EAST ENGLAND.—(9) THIRD PARTNER required in sound, old-established and increasing Practice over £5,000 in flourishing town. No panel or other contract work. Fees 5/- to £1 1s. and up to £5 5s. Not much midwifery. One-fourth share for disposal at 1½ years' purchase.

SOUTH OF ENGLAND.—(10) Seaport Town. THIRD PARTNER required in increasing Practice about £2,800 p.a. Panel 2,500. Share worth about £700 at two years' purchase with option to increase later.

LONDON, N.W.—(11) Lock-up Cash and Panel PRACTICE £1,250 p.a. Panel 1,900. No midwifery. Rent of Surgery £40. Premium to include surgery fittings and drugs. £2,000 cash.

CAPE COLONY.—(12) Special Ear, Nose and Throat PRACTICE, about £1,800, in one of the principal Towns. Work light. No opposition. Premium £500. Hospital and two good Nursing Homes.

MIDLANDS.—(13) ASSISTANT required (with view to Partnership) in Practice about £7,000 in up-to-date Town. Panel 2,500 (about). Assistant should have good knowledge of Eye work.

LONDON, S.W.—(14) Good-class PRACTICE (mostly Homoeopathic) in first-rate Residential Suburb. Cash Receipts 1920 £2,000, including about £500 from Ear, Nose and Throat work. Good detached house (6 bedrooms) with nice garden, etc. Premium, with good introduction, £2,000.

SOUTH AFRICA.—(15) NATAL. Unopposed PRACTICE. Receipts past two years averaged £3,400 p.a., including appointments worth £400 p.a. House stands in grounds of 3 acres.

HOME COUNTY.—(16) PARTNERSHIP in Practice about £2,200 p.a. in desirable Country Town. Panel 1,800. Visits 3 to 10/- Premium for one-third Share 2 years' purchase. Hospital and scope for surgery.

ASSISTANTS AND LOCUM TENENS SUPPLIED. RESIDENT PATIENTS INTRODUCED.

SCHOOLS AND TUTORS RECOMMENDED FOR BOYS AND GIRLS IN ALL PARTS OF THE COUNTRY AND ABROAD.

Revised and amplified edition of MEDICAL PARTNERSHIPS, TRANSFERS, and ASSISTANTSHIPS (Barnard & Stocker). Published by the Association, price 13/6. All enquiries to be addressed to Mr. A. V. STOREY, General Manager.

ESTABLISHED OVER 40 YEARS.

Mr. PERCIVAL TURNER

4 & 5, ADAM STREET, STRAND, W.C.2.

Telegrams: "EPSONIK, LONDON." Telephone: GERRARD, 399. After Office Hours—EPSON, 695

LOCUM TENENS provided—no charge to Principals.

Every description of AGENCY and ACCOUNTANCY work undertaken

FOR DISPOSAL.—PRACTICES AND PARTNERSHIPS in Town and Country. Incomes from £500 to £4,000 a year. Full details will be sent free to intending purchasers on application.

PEACOCK & HADLEY,

(Mr. A. HADLEY)

MEDICAL TRANSFER AGENCY,
19, Craven Street, Strand, W.C.2.

Telegrams: Herbaria, Westrand—London.

Telephone: Central 1112.

LOCUM TENENS and ASSISTANTS supplied.
Particulars of Practices and Partnerships
for Sale sent on application.

DR. J. FIELD HALL,

(FIELDHALL LIMITED)

MEDICAL TRANSFER AGENT,
28, Craven Street, Strand, W.C.2.

Telegrams: GERRARD 4867.

Telephone: GERRARD 2098.

Telegrams: "FIELDHALL, WESTRAND—LONDON."

MEDICAL CONVEYANCING AGENCY,
31, BEDFORD ST., STRAND, W.C.2.

(Gerrard 3879). (List: 1340.)

Mr. HERBERT NEEDES with 35 years' experience personally negotiates the Sale of Practices and Partnerships, undertakes Valuations and Audits and provides Locums and Assistants.

York Road (General Lying-in HOSPITAL), Lambeth, S.E.—Established 1765. Patrons, H.M. THE QUEEN and H.M. QUEEN ALEXANDRA. Medical Students and Qualified Practitioners admitted to the Practice of this Hospital. Telephone, 794 Central. For rules, fees, etc., apply Miss E. WHITE, Secretary.

THE MEDICAL AGENCY,

WATERGATE HOUSE,

York Buildings, Adelphi, W.C.2.

Managing Director: J. A. REASIDE.

Telegrams: "TUBERCLE, LONDON." Telephone: GERRARD, 8351.

The Agency undertakes the Transfer of Practices, Introduction of Partners, Investigations for Purchasers, Valuations, Negotiation of Terms, the Supply of Locum Tenens and Assistants, and Medical Accountancy.

LEE & MARTIN, LTD.,

THE BIRMINGHAM MEDICAL AGENCY

71, TEMPLE ROW, BIRMINGHAM.

TELEGRAMS: "Locum, Birmingham." TELEPHONE: 1116 Central, Bham.

Transfers of Practices and Partnerships arranged
Accounts Investigated & Income-tax Returns prepared
"LOCUMS" AND ASSISTANTS SUPPLIED.

THE MANCHESTER MEDICAL AND SCHOLASTIC ASSOCIATION, LTD.

8, KING STREET.

Telegraphic Address: "STUDENT, MANCHESTER."
TRANSFERS and PARTNERSHIPS arranged, and
Investigations, Valuations, &c. undertaken.
ASSISTANTS & LOCUM TENENS SUPPLIED.
PRACTICES for sale. Particulars on application.

Mr. J. C. NEEDES,

(P. W. NEEDES)

Medical Partnership and Conveyancing Agency
8, DUKE STREET, ADELPHI, W.C.2.

(Late 1, ADAM STREET, ADELPHI.)

Telegrams: "Acquirement, Westrand, London."

Telephone: Gerrard 3543.

This Agency (which has been established since 1875) undertakes the Sale of Practices, the Introduction of Partners, Valuations, Investigations on behalf of Purchasers, the supply of trustworthy Locum Tenens and Assistants, and every other description of Medical Agency business.

N.B.—No charges made to purchasers.

- LONDON SUBURB.**—In a pleasant North-western Suburb, an old-established Non-panel PRACTICE is for immediate disposal owing to ill health. Receipts about £1,000 a year, including appointments worth £500. Little or no midwifery. Detached house with good accommodation, garden, &c. Vendor's freehold. Price 1,500 guineas. Nominal premium for practice.
- PARTNERSHIP (Midland Counties).**—In a town of 20,000 inhabitants, with a further 20,000 in the district, the half-share of a well-established Practice producing about £2,000 a year, including £1,600 (on new basis) from panel. Commodious house in good order available (6 bedrooms, bathroom, &c.). Rent £75 a year on lease. Premium £1,500.
- PARTNERSHIP.**—In a pleasant London Suburb, a young well qualified gentleman can acquire a Share producing over £1,500 a year, in old-established good middle-class Practice. Further share paried with after a time. Nice residence available at low rental on lease. Premium 2 years' purchase.
- LONDON (W.C. District).**—Old-established PRACTICE worth about £1,100 a year, including appointments £35 and 7-0 panel patients. Visits 2/6 to 5/- Midwifery 3 guineas upwars. The house contains twelve rooms with well fitted up surgery, waiting and consulting rooms. Rent £91 p.a. Premium £1,500, part down and balance by arrangement.
- EASTERN COUNTIES (near the Sea).**—An old-established Country PRACTICE, situated in a beautiful agricultural District, close to a large Town, and worth £2,000 a year, including large panel and other appointments over £1,500. Good house available with ample accommodation. Rent £60 a year. Premium £3,500.

Santal Midy

FOR INTERNAL TREATMENT OF GONORRHOEA
URETHRITIS, and other affections of
the GENITO-URINARY TRACT.

Santal Midy Capsules have been prescribed with uniform success for over 30 years. Distilled from carefully selected Mysore Santal Wood, the oil is bland and remarkably
FREE FROM THE IRRITANT AND NAUSEATING EFFECTS

which are provoked by many preparations. There is marked absence of Gastric and other disturbances, diarrhoea and skin eruptions. Its mild chemotactic properties permit its administration in relatively large doses without fear of too violent reaction or intolerance.

SANTAL MIDY CAPSULES

may be prescribed and relied upon in all stages of Gonorrhoea, and in other forms of Urethritis and affections of the Genito-Urinary tract.

The capsules contain 5 drops, and usually 10 to 12 are given daily in divided doses.

Prepared in
the
Laboratoire, de
Pharmacie
Generale, 8 Rue
Vivienne, Paris,
and sold by most
Chemists and
Wholesale Drug-
gists throughout
the world.

GOLD MEDAL International Congress of Medicine, London, 1913.

MIST. HEPATICA CONC. (Hewlett's).

COMPOSITION.—Ext. Cascaræ, Ext. Rhei, Jalapin, Podophyllin, Cocainæ Hydrochlor., 1-20th gr. in each fluid drachm.

This preparation does NOT come under the Dangerous Drugs Act.

THIS excellent compound, first introduced as a general aperient and cholagogue, has now become a popular remedy, and attention has very recently been called to the value of the mixture, by various authorities, in that class of cases spoken of as Chronic Bilioussness, in Catarrhal Jaundice, and in the Jaundice of simple Hepatic Torpor. In passive or habitual Congestion of the Liver, so frequently met with, it has been used with marked benefit.

In the treatment of acute or temporary constipation, frequently met with in the convalescence from acute disease, and in pregnancy or in the constipation due to sedentary habits, to a deficiency of intestinal secretion, and of peristalsis, the mixture can be prescribed with wonderful effect, positively curing cases that have resisted other remedies.

The Dose is from 10 to 60 minims, according to the age and condition of the patient. One drachm is a direct aperient, and is not accompanied by griping or tenesmus.

Packed for Dispensing only in 10-oz.; 22-oz.; 40-oz.; and 90 oz. Bottles. Price in England, 12/6 per pound.

Please write: "Mist. Hepatica Conc. (HEWLETT'S)" to ensure obtaining this Preparation.

C. J. HEWLETT & SON, Ltd., Wholesale and Export Druggists and Manufacturing Chemists,
35 to 42, CHARLOTTE STREET, LONDON, E.C.2.

The "A.B.C." of DIET.
Because it is very rich in the Vitamins
'A,' 'B,' & 'C,' there is no tonic
food more serviceable in
wasting diseases.

'ROBOLEINE'

Delicate
children say
there is no tonic food
that they find so palatable.

OPPENHEIMER, SON & CO., Limited,
179, QUEEN VICTORIA STREET, LONDON, E.C.4.

Samples and Literature on application.

The best alternative for Cod Liver Oil.

Maltoline

TRADE MARK

A new combination of "Maltine," Olive Oil, Glycerophosphates and Fruit Juice, containing the well known Vitamines. Rich in Proteids, Diastase and Digestive Enzymes.

Sample bottle sent on receipt of professional card.

THE MALTINE Mfg Co., Ltd. (Est. 1878), 9, (BM) Holborn Viaduct, London, E.C. 1.

INFLUENZA AND SEQUELÆ.

The unique soothing properties of Angier's Emulsion, its favourable influence upon assimilation and nutrition and its general tonic effects, make it eminently useful both during and after influenza. It has a well-established reputation for efficacy in relieving the troublesome laryngeal or tracheal cough, correcting the gastro-intestinal symptoms and combating the nervous depression and debility.

ANGIER'S EMULSION



The Original & Standard Emulsion of Petroleum.

Angier's Emulsion is particularly adapted to the treatment of the catarrhal symptoms, whether tonsillar, bronchial or intestinal so generally associated with influenza.

Angier's Emulsion combats intestinal toxæmia; aids digestion; promotes nutrition; increases the patient's power of resistance; hastens convalescence.

Clinical reports from physicians who have used Angier's Emulsion in previous epidemics of influenza during the past thirty years, have conclusively demonstrated its wide range of usefulness in the treatment of influenza and its many complications.

FREE SAMPLES TO THE MEDICAL PROFESSION.

The ANGIER CHEMICAL CO. Ltd.,
86, CLERKENWELL ROAD, LONDON, E.C.1.