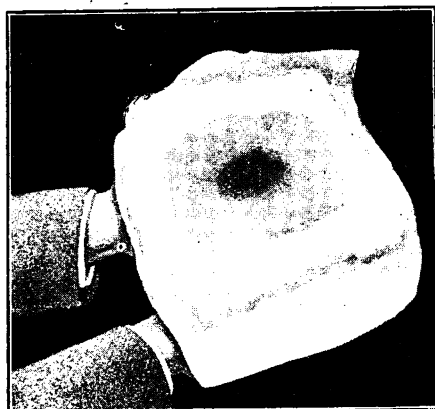


OBSERVE

THAT WET

S P O T



The Antiphlogistine Poultice, some hours after its application to an inflamed area, reveals (on removal) certain phenomena.

The centre is moist, where exudate has been drawn from the congested tissues—while the periphery, covering normal, surrounding tissues, is virtually dry.

Liquids follow lines of least resistance. The skin acts as a porous membrane separating two fluids of different densities—Antiphlogistine and the blood. An interchange occurs between their fluid constituents, *endosmotic* or *exosmotic* according to the direction of least resistance.

This “selective” action of

Antiphlogistine

TRADE MARK.

in inflammatory conditions, may be
considered almost “diagnostic.”

THE DENVER CHEMICAL MFG. CO., LONDON, E. 3.