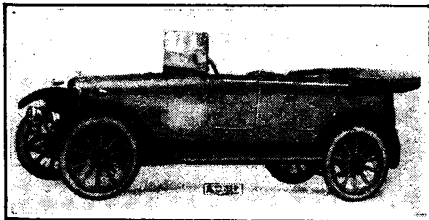


ENFIELD-ALLDAY

"The Car that is different"

10-20 h.p. Four-Seater	has been reduced to	£450
10-20 h.p. Two-Seater	" "	£445
10-30 h.p. Sports	" "	£475
12 h.p. Four-five-Seater	£450
12 h.p. Two-Seater	£445

Also Saloon, Coupe and Landauette and
All-weather Models.



The Car that is different

IN every essential feature of modern Car design, the Enfield-Allday is much more than a light car. In design, construction, power, equipment, and reliability it compares with cars of higher rating and higher cost.

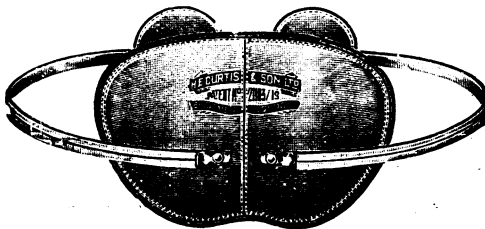
It is this "little more" that makes the Enfield-Allday so desirable a car. Costing no more than an ordinary light car, both to buy and run, it has that extra reserve of power, superior coachwork and little refinements that make "all the difference" to an owner-driver's full enjoyment of his car.

During 1922 the Enfield-Allday has won many premier awards for beauty of design in Club Rallies, and in Speed Trials two note-worthy achievements stand out to its credit, notably in the 200 miles race at Brooklands, a Standard Sports Model finished fourth, winning a Gold Medal, and averaging a speed of 76-86 m.p.h., and again in the Isle of Man 1,500 c.c. Race it was the only All-British Car to finish.

The 12 h.p. Model introduced for 1923, deliveries of which will commence in January, is a still further advance in design and value. With a Four Speed Gear Box, increased Wheel-base and track, re-designed dashboard and special all-weather features it is a car worth waiting for.

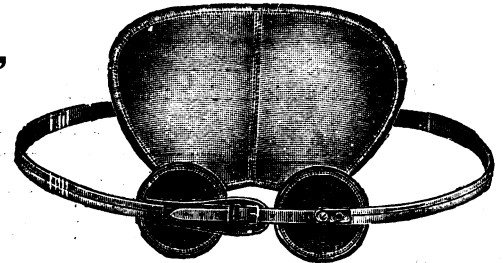
Catalogues from—

ENFIELD-ALLDAY MOTORS, LTD.,
SMALL HEATH, BIRMINGHAM



FRONT VIEW.

THE "CURTIS" ABDOMINAL SUPPORT



BACK VIEW

THE ONLY EFFECTIVE SUPPORT
FOR ANY FORM
**SPONTANEOUS OR TRAUMATIC
VENTRAL HERNIA.**

Write for further particulars—

H. E. CURTIS & SON, Limited,
8, Old Cavendish Street, LONDON, W. 1.

Directors: H. E. CURTIS and L. V. CURTIS.

*Telephone
grams Mayfair 1608.*