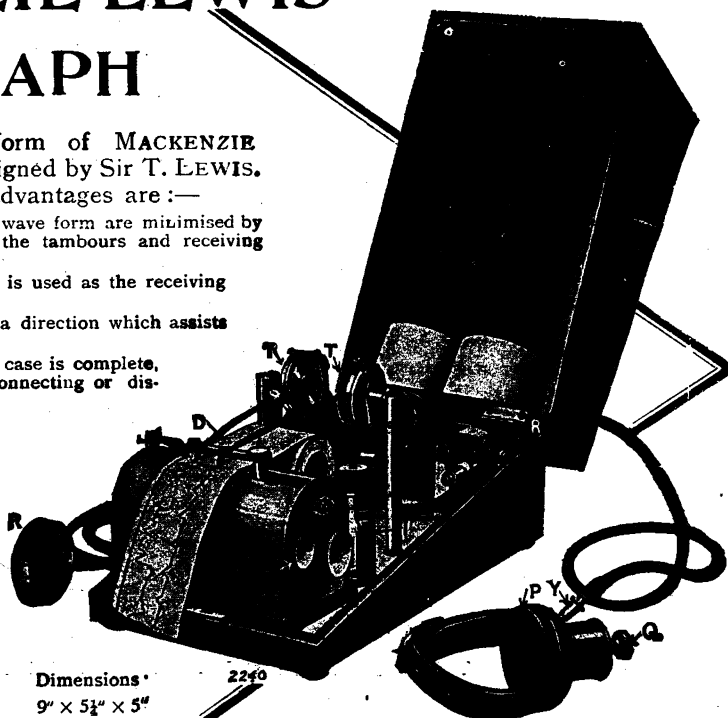


# The MACKENZIE-LEWIS POLYGRAPH

An improved form of MACKENZIE  
POLYGRAPH designed by Sir T. LEWIS.

Among its advantages are:—

- (1) Lag and distortion of wave form are minimised by the construction of the tambours and receiving chambers.
- (2) The glycerine pelotte is used as the receiving chamber.
- (3) The paper passes in a direction which assists the ink to flow.
- (4) The instrument in its case is complete, ready for use, no connecting or disconnecting required.



Dimensions\*  
9" x 5½" x 5"  
Weight: 4½ lbs.

Write for List No. B 181

The Cambridge and Paul  
**INSTRUMENT CO. LTD.**

WORKS: LONDON & CAMBRIDGE  
Head Office & Showrooms: 45, GROSVENOR PLACE, LONDON, S. W. 1.

53.

## SALT & SON, LTD.

(Head Offices): 7, CHERRY STREET  
BIRMINGHAM.

Orthopaedic Appliance Specialists. Artificial Limb Manufacturers.

### SALT'S GASTROPTOSIS BELT

(PATENT No. 178,713).

as designed for JOHN F. HALL-EDWARDS, Major (late R.A.M.C.), L.R.C.P. Edin., D.M.R. & E. Cantab., F.R.S. Edin.

THE reproduction of Radiographs given below of a patient suffering from Gastropotosis, prove the efficiency of this Belt. Dotted lines show iliac crests in each radiograph.

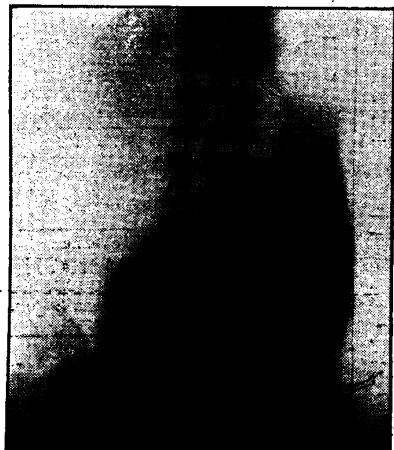


Fig. A.

Fig. A.—A slightly dilated and much dropped stomach radiographed immediately after partaking of a Barium (6 ozs.) "Umbrose" Meal. The greater curvature projects 3½ ins. below a line drawn from one iliac crest to the other.  
(Taken in the upright position).

Fig. B.—Shows same stomach radiographed 15 minutes later, the patient having lain upon a couch, the bottom feet of which were raised 9in. The Belt was then applied. The patient allowed to walk about for 5 or 6 minutes and the radiograph taken in the upright position.

Extract from article, "The Diagnosis and Treatment of Gastropotosis," by Major HALL-EDWARDS, in B.M.J., May 14, 1921:—"By far the most important item in the treatment is the special abdominal belt for holding the stomach up."

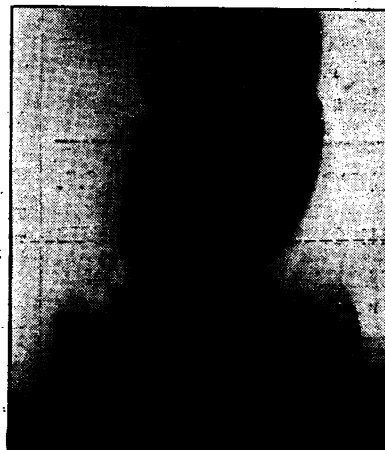


Fig. B.

Write for Particulars and Measurement Forms.

LONDON CONSULTING  
ROOMS:  
14-18, BLOOMSBURY ST.  
W.C. Museum 3845  
Fully qualified Nurse in  
attendance.  
BY APPOINTMENT ONLY.