

# ENFIELD-ALLDAY

*"The Car that is different"*

10-20 h.p. Four-Seater has been reduced to **£450**

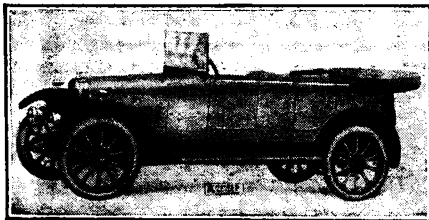
10-20 h.p. Two-Seater " " **£445**

10-30 h.p. Sports " " **£475**

12 h.p. Four-five-Seater ... .. **£450**

12 h.p. Two-Seater ... .. **£445**

Also Saloon, Coupe and Landauette and  
All-weather Models.



*The Car that is different*

IN every essential feature of modern Car design, the Enfield-Allday is much more than a light car. In design, construction, power, equipment, and reliability it compares with cars of higher rating and higher cost.

It is this "little more" that makes the Enfield-Allday so desirable a car. Costing no more than an ordinary light car, both to buy and run, it has that extra reserve of power, superior coachwork and little refinements that make "all the difference" to an owner-driver's full enjoyment of his car.

During 1922 the Enfield-Allday has won many premier awards for beauty of design in Club Rallies, and in Speed Trials two note-worthy achievements stand out to its credit, notably in the 200 miles race at Brooklands, a Standard Sports Model finished fourth, winning a Gold Medal, and averaging a speed of 76-86 m.p.h., and again in the Isle of Man 1,500 c.c. Race it was the only All-British Car to finish.

The 12 h.p. Model introduced for 1923, deliveries of which will commence in January, is a still further advance in design and value. With a Four Speed Gear Box, increased Wheel-base and track, re-designed dashboard and special all-weather features it is a car worth waiting for.

*Catalogues from—*

**ENFIELD-ALLDAY MOTORS, LTD.,**  
SMALL HEATH, BIRMINGHAM



## HORLICK'S MALTED MILK

THE ORIGINAL

### The Ideal All-Weather Food-Drink.

— Made in England. —

Horlick's Malted Milk is meat and drink in one, because it contains all necessary nutritive elements in the correct proportions demanded by Nature to support life and maintain health. Composed of the extracts of selected malted barley and wheat flour, combined with pure, Pasteurised cow's milk, it is perfectly digestible and rapidly assimilated, while Vitamines, those growth-promoting essentials, are supplied by both the milk and the grain.

Ready in a moment by stirring briskly in hot or cold water only.

To secure the original, specify Horlick's when prescribing

Samples will be forwarded free and postage prepaid to  
Members of the Medical Profession on application to

**HORLICK'S MALTED MILK CO., SLOUGH, BUCKS, ENGLAND.**