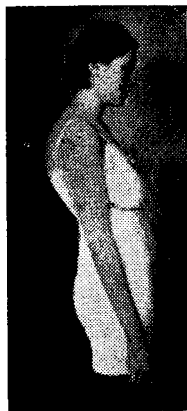


# SPENCER CORRECTIVE SUPPORTS FOR SPINAL CONDITION

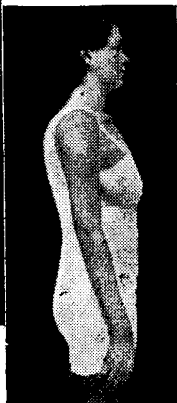
Spencer Designers work from the anatomical and physiological descriptions of the patient's figure, and design the support for treatment of the specific condition specified on medical prescription and to correct any existing mal-posture.

The improvement in health, body function and physical efficiency induced by improved posture is marked.



No. 1.

Typical photos of posture correction. Picture of fifteen-year-old girl before and immediately after the application of the Spencer Corrective Support. Interval of a few minutes between pictures Nos. 1 and 2.



No. 2.



No. 3.

Showing front fastening.

Because each Spencer is individually designed for the specific condition and made from the detailed measurements and posture description of the patient, exact fit and restful comfort are assured. All Spencer Supports are designed to correct mal-posture, provide abdominal control, and to balance the pelvic girdle. They are scientifically designed for simple and easy adjustment.

For Service at your Surgery, the Hospital, or the patient's home, see local Telephone Directory, or write direct to us.

## SPENCER (BANBURY) LTD.

Consultant Manufacturers of Individually Designed

**SURGICAL, THERAPEUTIC and  
ORTHOPAEDIC SUPPORTS**

Spencer House, Banbury, Oxfordshire

Spencer (Banbury) Ltd. is entered in the Board of Trade Register under BOARD OF TRADE regulations controlling all Textile-made Surgical Support Manufacture.

B.M.J. 9/43

# CAMP

TRADE MARK

## "PRECISION-FITTING"

adjustments, operating through self-locking buckles, double and redouble the power to bring the required degree of control about the pelvis.



In SACRO-ILIAC cases, the function of support or control may be varied at will in accordance with specific medical direction.

Camp Sacro-iliac supports are frequently used in conjunction with manipulative treatment.

Illustrated Reference Book for Physicians and Surgeons available post free on request to:—  
CAMP & COMPANY Ltd., 19, Hanover Sq., LONDON, W.1

# "FELLOWS"

TRADE MARK

## COMPOUND SYRUP OF HYPOPHOSPHITES

helps to overcome the devitalizing effects of respiratory infections, pregnancy, dietary deficiencies; and it is an excellent appetite stimulant. This dependable, bitter, and reconstructive Tonic contains valuable mineral salts; and it has been prescribed by doctors the world over for more than 60 years.

Such care is devoted to the preparation of Compound Syrup of Hypophosphites "Fellows" that only by making sure of the name "FELLOWS" can you be certain of the same unvarying quality.

Samples on Request

**Fellows Medical Mfg. Co., Ltd.**

286 St. Paul Street, West  
Montreal, Canada

**E. & S. LIVINGSTONE MEDICAL PUBLISHERS**

Volume I Now Ready

NEW EDITION OF A CLASSIC

Volume II Ready October-December

**WATSON-JONES' FRACTURES AND JOINT INJURIES**

THIRD EDITION—Complete in Two Volumes

VOL. I—Royal medium 8vo, 420 pages, 608 Illustrations

VOL. II—Royal medium 8vo, 540 pages, 792 Illustrations

Complete Set, price 75s. net (not sold separately); postage 2s. per set

(July-December, 1943)

*A special feature of this THIRD EDITION is the large number of beautiful coloured illustrations incorporated to illuminate the text.***PATHOLOGICAL HISTOLOGY**

Second Edition. By ROBERTSON F. OGILVIE, M.D.(Edin.), F.R.C.P.(Edin.). With 235 Photomicrographs in colour.

32s. 6d. net; postage 9d. (1943)

**PSYCHOLOGICAL MEDICINE**

With an Appendix War-time Psychiatry

By DESMOND CURRAN, M.B., F.R.C.P., D.P.M., and ERIC GUTTMANN, M.D., L.R.C.P.(Edin.).

10s. 6d. net; postage 6d. (1943)

**MEDICAL JURISPRUDENCE AND TOXICOLOGY**

Seventh Edition. By Professor JOHN GLAISTER, M.D., D.Sc.

28s. net; postage 7d. (September, 1942)

**DISEASES OF THE NERVOUS SYSTEM**

Third Edition. By F. M. R. WALSHE, O.B.E., M.D., D.Sc., F.R.C.P.

15s. net; postage 7d. (April, 1943)

**TEXTBOOK OF MEDICINE**

Sixth Edition. Edited by J. J. CONYBEARE, M.D., F.R.C.P., with 17 eminent contributors.

28s. net; postage 8d. (1942)

**TEXTBOOK OF MEDICAL TREATMENT**

Second Edition. Edited by Professor D. M. DUNLOP, B.A., M.D., F.R.C.P., Professor L. S. P. DAVIDSON, B.A., M.D., F.R.C.P. (Edin.), F.R.C.P.(Lond.), and Professor J. W. McNEE, D.S.O., B.Sc., M.D., F.R.C.P., with 29 eminent contributors.

28s. net; postage 8d. (Reprinted January, 1943)

NEW SECOND EDITION

NOW READY

**THE ESSENTIALS OF MODERN SURGERY**

By R. M. HANDFIELD-JONES, M.C., M.S., F.R.C.S., and A. E. PORRITT, M.A., M.Ch., F.R.C.S.

Royal 8vo, 1,220 pages, 624 Illustrations. 40s. net; postage 1s.

(1943)

**16-17, Teviot Place, EDINBURGH, I****CUNNINGHAM'S TEXT-BOOK OF ANATOMY**

Edited by J. C. BRASH, M.D., F.R.C.S., and E. B. JAMIESON, M.D. 8th Edition to be published shortly.

**CUNNINGHAM'S MANUALS OF PRACTICAL ANATOMY (10th Edition)**

Vol. 1: Introduction, Upper Limb, Lower Limb. Pp. 430. 194 Illustrations (114 in Colour).

Vol. 2: Thorax and Abdomen. Pp. 510. 237 Illustrations (128 in Colour).

Vol. 3: Head and Neck, Brain. Pp. 546. 235 Illustrations (113 in Colour).

Each Volume 16s. net

**COMPANION TO MANUALS OF PRACTICAL ANATOMY (5th Edition)**

By E. B. JAMIESON, M.D.

Pp. 720

15s. net

**POCKET ATLAS OF ANATOMY (3rd Edition)**

By VICTOR PAUCHET and S. DUPRET

Pp. 380

345 Illustrations (173 in Colour)

14s. net

**HISTOLOGY FOR MEDICAL STUDENTS**

By H. HARTRIDGE, M.D., D.Sc., and F. HAYNES, M.A.

Pp. 412

514 Illustrations (502 in Colour)

15s. net

**APPLIED PHYSIOLOGY (7th Edition)**

By SAMSON WRIGHT, M.D., F.R.C.P.

Pp. 827

367 Illustrations

5 Colour Plates

25s. net

**TEXT-BOOK OF THE PRACTICE OF MEDICINE (6th Edition)**

By Various Authors. Edited by FREDERICK W. PRICE, M.D., F.R.S.(Edin.)

Pp. 2,077

Illustrated

38s. net

**BEESELY AND JOHNSTON'S MANUAL OF SURGICAL ANATOMY (5th Edition)**

Revised by JOHN BRUCE, F.R.C.S., and ROBERT WALMSLEY, M.D.

Pp. 748

187 Illustrations (72 in Colour)

20s. net

**THOMSON AND MILES' MANUAL OF SURGERY (9th Edition)**

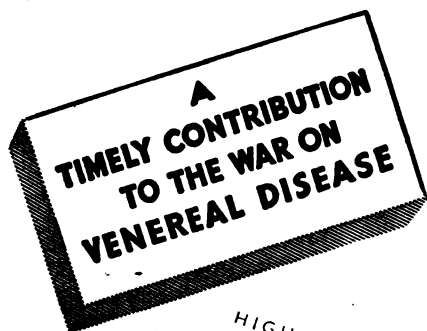
Revised by ALEXANDER MILES, M.D., F.R.C.S., and the late Sir DAVID WILKIE

Vol. 1: General Surgery. Pp. 700. 343 Illustrations.

Vol. 2: Regional Surgery. Pp. 758. 299 Illustrations.

Each Volume 22s. 6d. net

**Oxford University Press**



# EVARSAN

Regd. Trade Mark

Brand

A highly purified Neoarsphenamine, the synthesis of which was made possible by original research at The Evans Biological Institute. Each batch of Evarsan has to pass unusually severe laboratory tests before issue.

HIGH STABILITY  
COMPLETE SOLUBILITY  
BATCH CONSISTENCY  
IN ITS CHEMICAL AND  
BIOLOGICAL PROPERTIES



LOW TOXICITY  
HIGH THERAPEUTIC ACTIVITY  
EACH BATCH CLINICALLY  
TESTED BEFORE ISSUE

Manufactured and tested under U.K.  
Manufacturing Licence No. 18.

Approved by the Ministry of Health for  
use in Venereal Diseases Clinics.

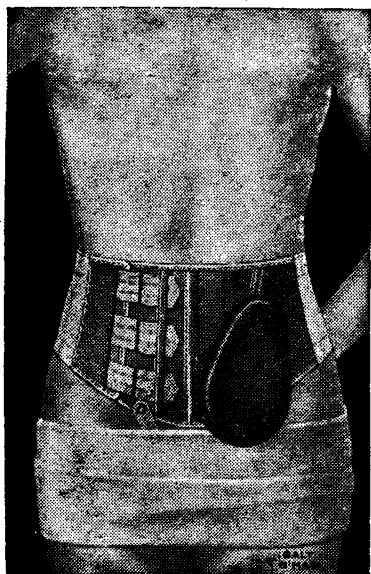
Full details of the use of Evarsan and other Evans products in the treatment of syphilis are contained in a handy pocket-book "The Treatment of Syphilis" free on request to:  
London - - - - Home Medical Dept., Bartholomew Close, E.C.1.  
Liverpool: - - - - Home Medical Dept., Speke, Liverpool, 19.

A PRODUCT OF

**MEDICAL EVANS RESEARCH**

Made in England at The Evans Biological Institute by

EVANS SONS LESCHER AND WEBB LTD., LIVERPOOL AND LONDON M35c



## GREATER EFFICIENCY

*is the outcome of improved design . . .*



### SALTS' PATENT COLOSTOMY BELT

offers considerable advantages over the former types of Appliance: advantages which lead to greater efficiency and extra comfort for the patient. The Receiver is detachable and sterilizable by boiling; the bag can be easily removed without removal of belt; the bag is easily emptied and washed; there are no crevices or metal fittings to hold faeces, smell is reduced to a minimum and the bags are easily and economically replaced. The belt is less bulky than the old style. Further information with Measure/Order Forms for Doctors' use will be found in SALTS' Corset and Belt Book.

LONDON ADDRESS: 1, STANLEY HOUSE, 103, MARYLEBONE HIGH ST., W.1. Tel. WELBECK 3034

**SALT & SON** Ltd.

BIRMINGHAM 2

#### Guarantee

"We guarantee to alter  
exchange or accept the  
return of any appliance  
without cost ordered by  
the Medical Profession,  
if not found suitable  
within fourteen days  
from date of supply."

Salt and Son Ltd.



## ENERGY IN RESERVE

'SUPAVITE' is indicated in the treatment of NERVOUS

INSTABILITY, LASSITUDE,

loss of MENTAL AND PHYSICAL ENERGY and

SEX POTENTIA

and all asthenic conditions arising from a deficiency of vitamins and mineral constituents necessary to health.

'Supavite' provides the practitioner with an effective and convenient remedy for vitamin deficiency. 'Supavite' is a pharmacologically active combination of the six vitamins A, B<sub>1</sub>, B<sub>2</sub>(G), C, D and E in a scientifically balanced form, plus iron, calcium and phosphorus. The specific action of 'Supavite' is the

restoration and maintenance of vigorous health and the building up of a reserve of energy. In convalescence, debility and anæmia and in cases where asthenic patients show a tardy response to medication, 'Supavite' will prove a valuable source of mental and physical vitality and strength.

*Angiers*  
**SUPAVITE**  
REGD. CAPSULES BRAND  
VITAMINS A, B<sub>1</sub>, B<sub>2</sub>, C, D, E WITH IRON, CALCIUM AND PHOSPHORUS

THE ANGLIER CHEMICAL CO. LTD., 86 CLERKENWELL ROAD, LONDON, E.C.1

## VAPEX INHALANT FOR PERSONAL USE



The pleasant unobtrusive odour of Vapex and its proved efficacy in the prevention and relief of the common cold, make it particularly suitable for personal use by the medical profession. Vapex is entirely free from the dangers attending oily or vasoconstrictive nebulæ. A drop on the handkerchief lasts all day.

THOMAS KERFOOT & CO. LTD, Vale of Bardsley, LANCs.

K13a

## VITAMIN B<sub>6</sub>

### (PYRIDOXINE)

Biological experiments with pure vitamin B<sub>6</sub> have proved useful in various syndromes. Improvement has been recorded in certain cases of idiopathic epilepsy, in amyotrophic lateral sclerosis, and in hypertrophic muscular dystrophy. Decreased stiffness and rigidity have followed its use in non-postencephalitic parkinsonism.

The particular deficiency symptoms which have responded to vitamin B<sub>6</sub> administration are extreme nervousness, insomnia, irritability, cramping abdominal pain, muscular weakness and rigidity with difficulty in walking.

Bemax is probably the richest of all dietary sources of vitamin B<sub>6</sub> and its regular use should therefore be of real benefit to patients showing groups of the above symptoms and signs.

Pure vitamin B<sub>6</sub> (Pyridoxine) is available in 10 mg. Tablets and 50 mg. Ampoules.

*Further particulars from*  
**VITAMINS Limited**

(Dept. B.X.), 23, Upper Mall, London, W.6

## ERGOAPIOL

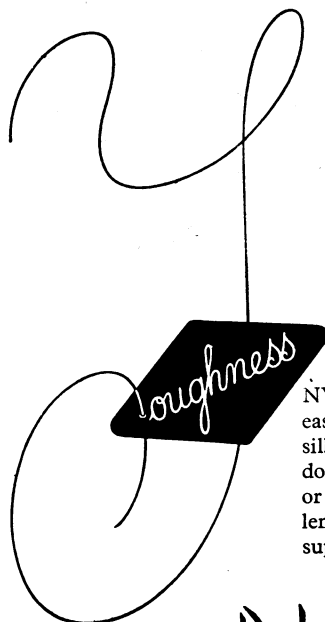
### (SMITH)

Amenorrhoea	Dysmenorrhoea
Menorrhagia	Menopause

To-day, as for years, Ergoapiol (Smith) is the accepted medicament in combating those menstrual anomalies which may be traced to constitutional disturbances; atonicity of the reproductive organs; inflammatory conditions of the uterus or its appendages; mental emotion or exposure to the elements.

*Manufactured in England for*  
**MARTIN H. SMITH CO., New York, U.S.A.**

*Distributors:*  
**THOS. CHRISTY & CO. LTD., Farnham, Surrey**



Elasticity, strength and uniform thickness are other outstanding properties of NYLON suture material.

NYLON filaments are more easily withdrawn than natural silkworm gut sutures, and they do not become soggy in water or steam. Available in 14-inch lengths from the usual medical supply houses.

## NYLON

(non-absorbable)

## SUTURES

**IMPERIAL CHEMICAL INDUSTRIES LTD.**

P.N.7

## IMPAIRED CORONARY CIRCULATION

with consequent disturbances in respiration, myocardial function, cardiac output and renal efficiency, is rapidly benefited by the use of CARDOPHYLIN (*Theophylline-Ethylenediamine*).

## Cardophylin

### PROVIDES THE TREATMENT OF CHOICE IN

- **CORONARY DISEASE** including Angina Pectoris, Coronary Thrombosis, Coronary Sclerosis.
- **LEFT VENTRICULAR FAILURE** including Paroxysmal Nocturnal Dyspnoea, Dyspnoea on exertion, Cardiac Asthma.
- **OEDEMA**—cardiac or renal.
- **CHEYNE-STOKES RESPIRATION**
- **BRONCHIAL ASTHMA**
- **RESPIRATORY DISTURBANCES** and for
- **"THE HEART THAT IS AGEING"**

*In tablets, ampoules and suppositories.*

Literature and samples on request.

**WHIFFEN & SONS, LTD.**  
**CARNWATH RD., FULHAM, LONDON, S.W.6**

# a NEW type of INSULIN

'Wellcome' brand Globin Insulin (with Zinc) is a new type of modified Insulin in a clear solution developed in the Burroughs Wellcome & Co. Laboratories, Tuckahoe, New York. It has a delayed action which is intermediate in its rate of onset and in its duration between those of unmodified Insulin and Protamine Insulin (with Zinc) Suspension. Clinical studies show that a single daily injection will control many of the cases of diabetes without night or early morning hypoglycæmia or overlap of effect. Medical literature on request.

Available in one strength only : 80 units per c.c. In bottles containing 5 c.c. Price 5/2

## 'Wellcome' brand GLOBIN INSULIN (with Zinc)



**BURROUGHS WELLCOME & CO.** (The Wellcome Foundation Ltd.) **LONDON**

ASSOCIATED HOUSES : NEW YORK MONTREAL SYDNEY CAPE TOWN BOMBAY SHANGHAI BUENOS AIRES

TRADE  
MARK

## 'NEPTAL' BRAND MERCURAMIDE

*for the relief of  
congestive heart failure*



The administration of a mercurial diuretic in the treatment of congestive heart failure is almost a routine procedure. The choice lies in the product to be used. 'Neptal' has proved itself over many years as a preparation upon which the physician can place his

full reliance. 'Neptal' brand mercuramide is available in ampoules (1 c.c. and 2 c.c.) for intramuscular and intravenous injection, and in tablets (0.16 Gm.) for oral use. The tablets are found particularly useful by the busy general practitioner.

**Supplies :** Solution : Boxes of 6 x 1 c.c. ampoules 4s. 6d.  
Solution : Boxes of 6 x 2 c.c. ampoules 6s. 0d.  
Tablets : Containers of 12 x 0.16 Gm. 6s. 6d.

Also available in boxes of 20 ampoules and containers of 25 and 500 x 0.16 Gm. tablets.  
Less the usual discounts and plus purchase tax. Obtainable from your usual supplier.

Our Medical Information Department will be glad to supply you with further details.

Manufactured by **MAY & BAKER LIMITED**

Distributed by **PHARMACEUTICAL SPECIALITIES (MAY & BAKER) LTD., DAGENHAM**

*The Original  
local anaesthetic  
AND STILL  
THE MOST DEPENDABLE*

**NOVOCAIN<sup>®</sup>** MARK

TRADE  
BRAND OF PROCAINE HYDROCHLORIDE

'NOVOCAIN' Powder: Bottles of  
1 gm., 5 gm.,  $\frac{1}{2}$  oz. and 1 oz.

★ Details in the 1943 BAYER PRICE LIST and THERAPEUTIC INDEX. Please send 1d. stamp for a copy (Vide Paper Regulations)

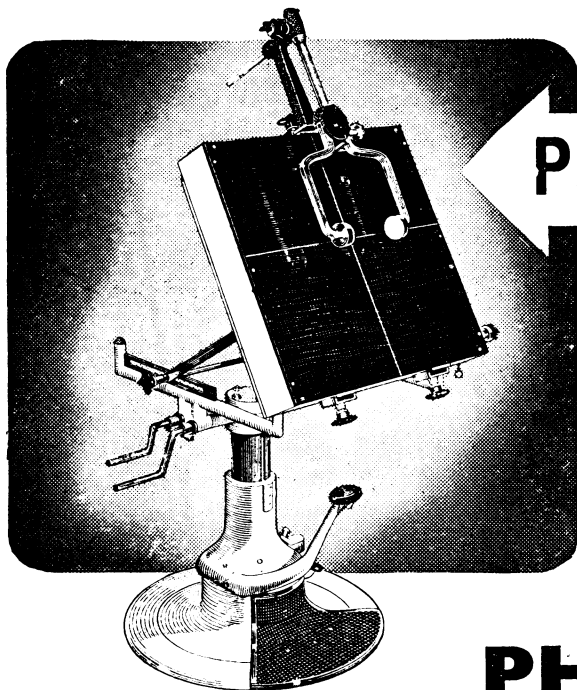
BAYER PRODUCTS LTD · AFRICA HOUSE · KINGSWAY · LONDON · W.C.2

**BAYER**

## EFFICIENT SKULL RADIOGRAPHY

*with this versatile*

## PEDESTAL BUCKY UNIT



With the addition of a head clamp this new pedestal Bucky provides a first-class skull radiographic apparatus, embodying all the necessary adjustments for this work. It is suitable for all radiography with which an inclined or vertical Bucky is used—for example, the technique employed for encephalography and other applications of a similar kind.

There are many other successful applications of the Philips Pedestal Bucky-Stretcher Outfit, of which the component units are available separately if desired.

These accessories are included—Head clamp attachment for immobilisation of the head while being radiographed. Patient's seat with adjustable backrest.

# PHILIPS METALIX

PHILIPS LAMPS LTD.

WRITE FOR  
CAT. XA5.

CENTURY HOUSE, SHAFTESBURY AVENUE, LONDON, W.C.2. TELEPHONE GERRARD 7777  
(6C)

## SYSTEMIC TREATMENT IN SKIN DISORDERS

● Colloidal Calcium with 'Ostelin' produces marked improvement in many otherwise unresponsive skin disorders, especially if there is local congestion. In chilblains and in the allergic type of skin disease, urticaria, angioneurotic oedema and eczema, the effect is often rapid and almost specific. Irritation and swelling are relieved, and the reparative process is greatly enhanced.

Colloidal Calcium with 'Ostelin' is also a powerful general stimulant and is used in many conditions of ill-health to promote a subjective improvement in well-being.

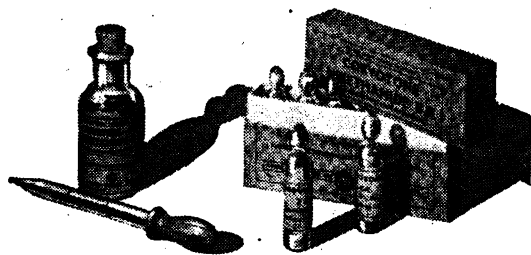
Colloidal Calcium with Ostelin contains vitamin D (5,000 i.u. per cc.) with calcium in colloidal combination for injection.

## COLLOIDAL CALCIUM with OSTELIN



GLAXO LABORATORIES LTD., GREENFORD, MIDDX. BY ROn 3434

## CORVOTONE



## CARDIAC STIMULANT

A non-toxic cardiac and respiratory stimulant for oral and parenteral administration. Corvotone may be administered with safety over long periods in cases of myocardial deficiency.

Corvotone-Oral		Corvotone for Injection	
$\frac{1}{2}$ fl. oz.	- - 3/7½	Box of 3 x 2 c.c. amps.	2/3½
100 c.c.	- - 18/4	Box of 6 x 2 c.c. amps.	4/1
		Box of 3 x 5 c.c. amps.	5/1½

Prices net

## GONADOTROPHIC HORMONE

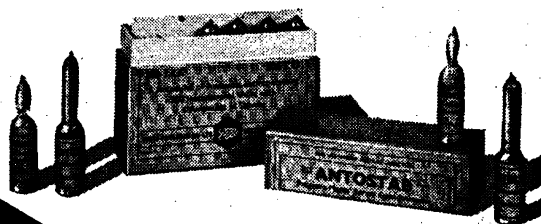
A preparation of pregnant mares' serum gonadotrophin, for the treatment of conditions associated with anterior pituitary and ovarian dysfunction. Excellent clinical results have been obtained in the treatment of amenorrhoea, hypomenorrhoea, metrorrhagia and sterility due to anovulatory cycles.

Ampoules of 200 International Units with solvent.

Box of 6 ampoules 12/9

Price net

## ANTOSTAB



Obtainable through all branches of



Literature sent on request

BOOTS PURE DRUG COMPANY LIMITED NOTTINGHAM



# DIPHENAN B.D.H.

## *The Non-toxic Anthelmintic*

Diphenan, *p*-benzyl-phenyl carbamate, formerly only obtainable from Germany under a proprietary name, is a synthetic substance which, over a period of several years, has been increasingly used for the treatment of threadworm infestation. Diphenan has distinct advantages over the substances previously used in that the incidence of reactions produced in the patient is considerably lower and the few symptoms produced are markedly less disturbing and of no permanent significance.

Such symptoms as nausea, xanthopsia and other visual disturbances which are produced by santonin are not produced by diphenan, and it may safely be given to patients known to be intolerant to santonin.

Diphenan B.D.H. is an exceptionally highly purified substance which, on oral administration, rapidly brings about extreme contraction of the parasite and prevents deposit of eggs; it can be relied upon to produce uniformly successful results.

*Details of dosage and other relevant information will be gladly supplied on request.*

THE BRITISH DRUG HOUSES LTD. LONDON N.1

Diphen E/4

## ***Circulatory and Respiratory Analeptic***

# CARDIAZOL

TRADE MARK

BRAND

*Pentamethylenetetrazol*

## ***General Central Stimulant***

"Cardiazol" has a powerful effect and great therapeutic range. Respiration is deepened and volume increased. The stimulant action on the circulation is evidenced above all by an increase in the amount of blood in circulation, followed by improved pulse and blood pressure. "Cardiazol" is directly antagonistic to substances with a narcotic action, since it increases the flow of blood through the brain and not only energetically stimulates the subcortical centres but also the cerebral cortex.

**"CARDIAZOL"  
EPHEDRINE**

TRADE MARK

BRAND

Antiasthmatic—circulatory tonic of central and peripheral action. The synergism of its components allows the ephedrine dose to be kept so low that secondary effects are avoided.



*Comprehensive literature on request.*

**KNOLL LIMITED**

**61, Welbeck Street, LONDON, W.1**

(K.34)

*A Therapeutic Agent of  
Paramount Importance*



As a therapeutic agent calcium is of paramount importance.

But equally important with the supply of Calcium is Vitamin D as without it Calcium cannot be absorbed. In the Collosol range Calcium c Vit. D is available for administration orally and subcutaneously. It has produced marked results in the treatment of dental caries, erythromelalgia, malnutrition, chronic sepsis, tuberculosis, etc., and has wide application in gynaecology.

## COLLOSOL CALCIUM c VIT. D

THE CROOKES LABORATORIES (*British Colloids Ltd.*), PARK ROYAL, LONDON, N.W.10

### WARTIME GASTRIC DISORDERS



'BiSoDol' is the result of painstaking research and extensive clinical trial.

A finely-divided powder, easily miscible with milk or water, it is especially well suited to the treatment of gastric disorders frequently resulting from a change of occupation. Symptoms of nausea, flatulence and dyspepsia respond well to its sedative properties. Incorporation of the enzymes, papain and diastase, ensures completion of the digestive processes. Mag. Carb. Levis., in addition to exerting an antacid action, is effective in counteracting any tendency to constipation.

# — BiSoDol —

BISODOL LIMITED, 12 CHENIES STREET, LONDON, W.C.1

# Confidence in Antisepsis

'Dettol' is an efficient bactericide. It is persistent. It is stable. It is non-poisonous, non-staining. Clear and clean, it is even pleasant in use. These properties have combined to distinguish 'Dettol' and to win professional confidence. 'Dettol' can be used at fully effective strengths without danger or discomfort. Moreover, germicidal efficiency is maintained when blood or pus—even in considerable quantity—is present.

*From all Chemists and Medical Suppliers.  
Special sizes for Medical and Hospital use.*

## DETTOL

Trade Mark

THE MODERN ANTISEPTIC

Making good  
the nervous  
wear and tear

★

Carefully washed and screened corn is ground to extreme fineness retaining its natural protein and phosphates but eliminating grit and cellulose by sifting through fine silk screens.

Following the processing of the powder in special ovens and a final blending and refining, the preparation of Jenner's Malted Food is complete.

Its fine texture makes it assimilable by weak and nervous digestions. It is consequently a valuable supplementary food for war workers as well as for nursing mothers, babies, old people and invalids.

## JENNER'S

SWEETENED  
malted food

MALT OR CHOCOLATE FLAVOUR  
Prescribed by eminent physicians  
for over 50 years.

Splendor Ltd. 5, Beestmarket Hill,  
Nottingham and 7c, Lower Belgrave  
Street, London, S.W.1

# "Gamgee Tissue"

REGD. TRADE MARK

For use in  
the treatment of the  
**CHEST and LUNGS**  
and  
surgical uses generally

Made exactly according to the direction of its inventor, the late Sampson Gamgee, F.R.S.E., Consulting Surgeon to the Queen's Hospital, Birmingham. Composed of high-grade cotton wool enclosed in absorbent gauze.

Obtainable in three qualities from all chemists.

Sole Proprietors and Manufacturers:  
ROBINSON AND SONS LTD.,  
WHEAT BRIDGE MILLS, CHESTERFIELD  
London Office: 229/231, HIGH HOLBORN, W.C.1

# LACTAGOL

is a

## SPECIFIC GALACTAGOGUE

Lactagol presents: Edestin (cotton seed extract), Calcium, Phosphorus, Iron, etc.

**FREE** Samples for clinical trial  
post free on application to:

LACTAGOL Ltd., MITCHAM, SURREY

## FINANCE

for the acquisition by  
**PAYMENTS OUT-OF-INCOME**  
of

**SURGERY AND OTHER FURNITURE.  
SURGICAL INSTRUMENTS, MEDICAL  
TEXT BOOKS, X-RAY APPARATUS,  
LABORATORY EQUIPMENT.**

The above list is illustrative only. Under its equipment Purchase Plan the company is prepared to assist doctors to acquire ANY article and spread the cost over a period.

**BRITISH MEDICAL FINANCE  
LTD.**

Tavistock House South, Tavistock Square  
London, W.C.1



As an  
Antacid  
or in  
febrile  
conditions

## Lembar

*justifies the Doctor's highest  
recommendation.*

*When peace returns we hope  
it will again be available—  
as pure, as good and  
as useful as ever.*

MADE BY RAYNER AND COMPANY LIMITED  
LONDON N.18

## Respiratory Emergencies!

### SPARKLET RESUSCITATOR



The 'Sparklet' Resuscitator has again and again proved invaluable in the Carbon Dioxide treatment of Respiratory Failure Emergencies.

## CO<sub>2</sub> Snow Sticks!

### POCKET CO<sub>2</sub>

### SNOW OUTFIT

With this outfit, CO<sub>2</sub> Snow Sticks are prepared in a few moments, and the treatment of skin blemishes made convenient and economical.



Write for special booklets to Dept. 43  
**SPARKLETS LIMITED**  
MEDICAL SECTION, LONDON, N.18.

## UNIVERSITY COLLEGE HOSPITAL MEDICAL SCHOOL

TELEPHONE EUSTON 5050 (7 lines)  
(UNIVERSITY OF LONDON) UNIVERSITY  
STREET, GOWER STREET, W.C.1

THE WINTER SESSION  
WILL COMMENCE ON TUESDAY,  
SEPTEMBER 28, 1943

The School is for Final Students only. Students are prepared for the degrees of the Universities of—Oxford, Cambridge, London, and Durham, and for the Diplomas of other qualifying bodies.

### ARRANGEMENTS FOR STUDENTS DURING THE WAR

The whole of the Clinical Studies are carried out in London at University College Hospital and Medical School.

**FEES.** The fees for the complete Clinical Course are £135 9s. 0d. Oxford or Cambridge Students who have completed their Course in Pathology, £120 9s. 0d. The fees are payable, if desired, in three annual instalments of £45 3s. 0d. or £40 3s. 0d. respectively. There are no extras as the fees include: (1) Courses of instruction in Pharmacy, Vaccination, and Fevers; (2) Life Subscription to the Medical Society; (3) Subscription to the U.C.H. Magazine.

**SCHOLARSHIPS, EXHIBITIONS and Prizes** (value over £1,000) are awarded annually. Among the most important are:

I. **GOLDSMID ENTRANCE SCHOLARSHIPS**, entitling the holder to the Final Course of Medical Study, are offered for competition annually in July, and are open to Students who are preparing for the Degrees of the Universities of London, Oxford, Cambridge, Durham, or other British Universities, or for the Diplomas of the Royal Colleges of Physicians and Surgeons.

II. **GOLDSMID ENTRANCE EXHIBITION** (value £80), entitling the holder to a reduction by £80 of the fees due for the Full Course of Final Medical Study.

III. **FILLITER ENTRANCE SCHOLARSHIP IN PATHOLOGY** (value £52 10s.), entitling the holder to a reduction by £52 10s. of the fees due for the Full Course of Final Medical Study.

Candidates will be examined in any two of the following subjects: Anatomy, Physiology, General Pathology, and Biochemistry. Candidates need take the examination in Pathology alone if they desire to enter only for the Filliter Entrance Scholarship in Pathology.

All further information and Prospectus can be obtained from the Secretary, and the Dean can be interviewed at any time by appointment.

Dean: S. COCHRANE SHANKS, M.D., F.R.C.P., F.F.R.

Sub-Dean for Medical Students: Pro. S. J. COWELL, M.B., F.R.C.P.

Acting Sub-Dean for Dental Students: ALAN SHEFFORD, O.B.E., L.D.S.R.C.S.Eng.

Secretary: R. SLOLEY.

## UNIVERSITY OF EDINBURGH

### FACULTY OF MEDICINE

The University grants the Degrees of Bachelor of Medicine and Bachelor of Surgery (M.B., Ch.B.), Doctor of Medicine (M.D.), and Master of Surgery (Ch.M.).

Opportunities for Hospital Practice are afforded in Hospitals in the City, and upwards of 3,800 beds are available for Clinical Instruction of Students of the University.

The approximate cost of the course, extending over five years, for the Degrees of M.B., Ch.B., is £270. Prospective students are required to make application for admission on a prescribed form not later than July 1 of the year in which they wish to enter.

The University also grants a Diploma in Medical Radiology, and a full course of instruction for the Diploma is provided.

In the various Departments of the Faculty of Medicine provision is made for research by students of graduate standing.

A copy of the Faculty Programme may be obtained from the Dean of the Faculty of Medicine, University, Edinburgh, 8. Programmes regarding Degrees in other Faculties may be obtained from the Matriculation Office, University, South Bridge, Edinburgh 8.

W. A. FLEMING, Secretary to the University.

## ROYAL COLLEGE OF SURGEONS OF EDINBURGH

INCORPORATED 1505

COPIES OF REGULATIONS for the Fellowship Licence, Higher Dental Diploma and Licence in Dental Surgery, containing Dates of Examinations, may be had on application to

Surgeon's Hall, 18, Nicholson Street, Edinburgh, 8. DAVID THOMSON, Clerk of the College.

## ST. BARTHOLOMEW'S HOSPITAL AND COLLEGE

UNIVERSITY OF LONDON

WINTER SESSION BEGINS OCTOBER 1, 1943

### WAR-TIME ARRANGEMENTS

All the pre-clinical Departments of the College are now temporarily established at Cambridge, where full courses have been arranged to meet the requirements of the Regulations of the University of London, and are carried out by St. Bartholomew's teachers.

The clinical work of the senior students continues to be based on St. Bartholomew's Hospital, but is also carried on in two large Hospitals in Sector III of the Emergency Medical Service, viz., at New Southgate and St. Albans, which provide a larger number of beds than normally. Adequate facilities for the teaching of Pathology and Midwifery have been arranged. All Out-Patient Departments at St. Bartholomew's are open.

Special arrangements are made for the housing of students.

A full Staff of clinical teachers is distributed over the Hospitals. Lecture courses are arranged in all Hospitals.

### STUDENTS' UNION

The Union possesses a Club Ground of seventeen acres at Chislehurst, and athletic amenities are available in the newly-purchased site in Charterhouse Square, five minutes' walk from the Hospital.

### HIGHER EXAMINATIONS

Special Classes are held for Primary F.R.C.S., etc. For further particulars apply, personally or by letter, to The Dean of the Medical College, St. Bartholomew's Hospital, London, E.C.1.

## CHARING CROSS HOSPITAL MEDICAL SCHOOL

(UNIVERSITY OF LONDON.)

SESSIONS BEGIN OCTOBER AND APRIL

Facilities are provided for the whole medical curriculum. Except for a period of six months, when one medical clerkship and one surgical dressership are served at Ashridge Hospital, the whole of the work, clinical and pre-clinical, is done in London. The instruction of students both in London and at Ashridge is conducted by the Staff of Charing Cross Hospital and the two hospitals provide a service of approximately 1,500 beds. It is still the policy of the School to admit only thirty students a year, which not only ensures small classes with intimate contact between staff and students, but also provides exceptional opportunities of securing a House Post in the parent hospital or in the Sector.

### SCHOLARSHIPS:

The following are awarded annually: (a) Thomas Henry Huxley, £120. Anatomy and Physiology; (b) Benjamin Golding, £120. Pathology or Biochemistry; (c) David Livingstone, £75. Anatomy and Physiology; (d) University Exhibitions each of £60; (e) Edith and Mary Donald Entrance, £65; (f) George Verity Entrance, £65; (g) Third Entrance, £65.

Men students only are admitted.

FEES—38 guineas per annum.

For Prospectus and full information apply personally or by letter to the Dean, R. A. HICKLING, B.A., M.D., F.R.C.P., Charing Cross Hospital Medical School, 62, Chandos Place, London, W.C.2.

Telephone No.: TEMple Bar 3903.

## KING'S COLLEGE HOSPITAL MEDICAL SCHOOL

(UNIVERSITY OF LONDON)

Dean: JOHN B. HUNTER, M.C., M.Ch., F.R.C.S.

THE NEW MEDICAL SCHOOL contains Lecture Rooms, Lecture Hall, Museum, Research Rooms and Laboratories, Bio-Chemical Research Laboratory, Common Rooms, and Refectory. Two Squash Rackets Courts adjoin the School.

FOURTEEN ENTRANCE SCHOLARSHIPS, total value £1,530, are awarded annually.

RESIDENT HOSPITAL APPOINTMENTS, numbering forty-one, are made during each year.

ATHLETIC GROUND. The Athletic Ground of the Medical School is within ten minutes' walk of the Hospital, and has accommodation for cricket, football, hockey, and lawn tennis.

SCHOOL HOSTEL. "The Platanos," standing in large grounds, with three lawn tennis courts, provides residence for 80 students, and is within five minutes' walk of the Hospital, but is not available during the war.

The Dental School provides full Courses given in co-operation with King's College, in preparation for Dental Degrees and Diplomas.

For Particulars, Calendar of the School, and Appointments to see the School and Hospital, application should be made to the Secretary, S. C. RANNER, M.A., King's College Hospital Medical School, Denmark Hill, London, S.E.5.

## UNIVERSITY COLLEGE HOSPITAL DENTAL SCHOOL

NATIONAL DENTAL HOSPITAL, GREAT  
PORTLAND STREET, W.1.

### LECTURERS

DENTAL SURGERY AND PATHOLOGY: ALAN SHEFFORD, O.B.E., L.D.S., R.C.S.Eng. SPECIAL ANATOMY: ALAN SHEFFORD, O.B.E., L.D.S., R.C.S.Eng. ORTHODONTICS: A. C. MCLEOD, D.D.S., B.Sc. (Dent.), L.D.S. DENTAL MECHANICS: J. A. SNAREY WRIGHT, H.D.D. (Ed.), L.D.S., R.C.S. DENTAL MATERIA MEDICA: H. DAVIS, B.Sc., Ph.D., A.I.C., Ph.C. BACTERIOLOGY OF THE MOUTH: Sir KENNETH GOADBY, K.B.E., D.P.H., L.R.C.P., M.R.C.S., L.D.S., R.C.S. BACTERIOLOGY: L. E. GLYNN, M.B., B.S.(Lond.). DENTAL HISTOLOGY: A. K. INCE-JONES, L.R.C.P., M.R.C.S., L.D.S., R.C.S. DENTAL METALLURGY: H. W. THORPE, B.Sc., M.I.Chem.I. ANAESTHETICS: M. W. P. HUDSON, M.B., B.S., D.A. RADIOLOGY: D. A. IMRIE, M.D.Laus., L.R.C.P.E., L.R.C.S.E., D.M.R.E., L.D.S. SPECIAL MEDICINE LECTURES: A. J. MORLAND, M.D., F.R.C.P. SPECIAL SURGERY LECTURES: E. K. MARTIN, M.S., F.R.C.S.Eng.

THE WINTER SESSION COMMENCES

TUESDAY, SEPTEMBER 28, 1943

This Hospital and School, situated in the centre of a large population, and within a few minutes of University College Hospital, has recently been reorganised and equipped on the highest standard of modern requirements, and admirably adapted for the teaching of students in every branch of the Science and Art of Dental Surgery. The mechanical laboratory, conservation room, and X-ray departments are replete with all the latest approved appliances.

Students (men and women) enter as students of University College Hospital, and attend classes in anatomy and physiology at University College Hospital Medical School.

Each student serves as a dresser in the extraction, anaesthetic, conservation and X-ray departments, which provides him with the opportunity of observing and actually carrying out the methods of work in all branches.

Four House Surgeons are appointed half-yearly.

The Calendar, containing full information as to lectures, fees, prizes, etc., may be had on application to the Sub-Dean of Dental Students, who attends the University College Hospital Medical School, University Street, Gower Street, W.C.1, on Fridays at 11 a.m.

## ROYAL COLLEGE OF PHYSICIANS OF EDINBURGH

The EXAMINATIONS for the LICENCE of the College (as a single qualification) for the ensuing year will be held on the *First Wednesday* and the following days of every month (except September and October).

Candidates must be registered medical practitioners. Applications must be lodged with the Secretary one week before the date of the examination at which they propose to appear.

The EXAMINATIONS for the MEMBERSHIP of the College are held quarterly during the *second week of January, April, July and October*.

Candidates for the MEMBERSHIP must submit their applications and testimonials to the Secretary one month before the date at which they wish to appear for Examination.

For the Regulations in regard to the various qualifications granted by the College and all other information, application may be made to the Secretary.

## THE ROYAL DENTAL HOSPITAL OF LONDON

### SCHOOL OF DENTAL SURGERY

(University of London), Leicester Square, London, W.C.2.

Men and Women Students are admitted for the Curriculum for the B.D.S. Degree and the L.D.S. Diploma in January, May and October.

HOSPITAL PRACTICE.—The school is furnished with modern equipment, and the Clinic of the Hospital is unrivalled. Students may attend the operations in the In-patient Department, and chair-side instruction is given in Advanced Operative Technique and Orthodontics.

DENTAL PROSTHETICS.—The Mechanical Laboratory is a spacious and fully equipped department under the direction of the Lecturer in Prosthetics.

HOUSE APPOINTMENTS.—Three Senior House Surgeons and eighteen ordinary House Surgeons are appointed every year.

SCHOLARSHIPS.—A number of Scholarships, Bursaries, and Prizes are awarded annually, including an open Entrance Scholarship of £50.

Applications for further particulars and School Calendar are invited by THE DEAN.

## WESTMINSTER HOSPITAL MEDICAL SCHOOL (UNIVERSITY OF LONDON)

The new Medical School building and the new Hospital are now completed with their full educational opportunities, which comprise the latest developments together with maximum convenience. Owing to the unavoidable restriction of available beds and consequent reduction of clinical material, certain appointments are at present being held at hospitals outside London.

**SCHOLARSHIPS.**—Four scholarships to the value of £75 each are awarded on the result of an examination held in May of each year in First Year Subjects. Four Scholarships are also awarded annually as the result of examinations in March and September in Anatomy and Physiology.

**FEES.**—Entrance fee, 13 guineas (8 guineas for those taking clinical studies only). Annual fee, 44 guineas, which includes membership of the Sports Union Club with its various branches—football, cricket, tennis, hockey, swimming, fencing, boxing, sailing, golf, rowing, squash rackets, and Guthrie Society. The Sports Ground is within 20 minutes of the Hospital.

**RESIDENT APPOINTMENTS.**—Paid appointments as Medical, Surgical, and Obstetric Registrars, Casualty Officers, House Physicians, House Surgeons, and Anaesthetist are available for Students upon qualification. There are excellent opportunities for research work in the endowed Carllill Laboratories. The number of students is strictly limited to ensure the maximum advantages of individual clinical teaching and to afford the large majority of those who qualify the opportunity to secure one of these very valuable appointments.

The Dean or Sub-Dean will be pleased to arrange for intending Students and Parents to inspect the Hospital and Medical School at any time. Only male students are admitted.

A Prospectus and full particulars may be obtained on application to the Dean—Sir ADOLPHE ABRAHAM, O.B.E., M.A., M.D., F.R.C.P., Westminster Hospital Medical School, Horseferry Road, Westminster, London, S.W.1. Telephone: VICTORIA 6041-2.

## ST. GEORGE'S HOSPITAL MEDICAL SCHOOL (UNIVERSITY OF LONDON) HYDE PARK CORNER, S.W.

The Hospital and Medical School occupy the finest site in London and are readily accessible from all parts of the Metropolis.

The entire teaching in the School is devoted to the subjects of the Final Examination; in other words, is specially adapted to the interests of men from the Universities who have passed their Examination in Anatomy and Physiology.

St. George's students attend at King's College for tuition in the Preliminary and Intermediate subjects.

**SEVEN ENTRANCE SCHOLARSHIPS IN ANATOMY AND PHYSIOLOGY, AND GENERAL PATHOLOGY,** of the value of £120, £80 (3), £60 (2) and £50 respectively, and MANY VALUABLE PRIZES ARE AWARDED EACH YEAR.

The ST. GEORGE'S HOSPITAL CLUB incorporates the RUGBY FOOTBALL, CRICKET, LAWN TENNIS, BOXING, RIFLE and other Clubs, and possesses an ATHLETIC GROUND within easy reach of the Hospital, and Smoking and Luncheon Rooms on the School Premises.

Annual Composition Fee, which covers all courses, lectures, etc., in the Hospital and School, £42. Annual Club Subscription, £3 13s. 6d.

The Winter Session will begin on October 1, but students can enter at any time.

Further information may be obtained from the Dean of the Medical School.

H. W. GORDON, M.C., M.B., F.R.C.P. Dean.

## LONDON (ROYAL FREE HOSPITAL) SCHOOL OF MEDICINE FOR WOMEN

(University of London)

Hunter St., Brunswick Square, W.C.1.

ELIZABETH BOLTON, C.B.E., M.D., B.S., Dean.

FULL COURSES are arranged for the London M.B., B.S. Degrees and certain Examinations of other qualifying bodies, and Dental Courses in conjunction with the Royal Dental Hospital.

The CLINICAL COURSE is pursued at the Royal Free Hospital, and at present at its Emergency Medical Service Base Hospital, Arlesey, Beds., with additional experience at some special Hospitals.

Appointments at the Hospital and Medical School are open to Students after qualification.

Scholarships, Bursaries and Prizes of the value of £2,000 are awarded annually.

The SESSION begins on OCTOBER 1, each year. Application for admission must be made before February 1 for the following October.

The Prospectus and full information can be obtained from the Warden and Secretary.

## THE QUEEN'S UNIVERSITY OF BELFAST

FACULTY OF MEDICINE SESSION 1943-1944

Vice-Chancellor: D. LINDSAY KEIR, M.A.

Dean: Professor W. J. WILSON

**Anatomy:** T. Walmsley, M.D., F.R.S.E. **Operative Surgery and Applied Anatomy:** H. P. Malcolm, M.B., M.Ch. **Physiology:** H. Barcroft, M.A., M.D. **Medicine:** W. W. D. Thomson, M.D., B.Sc., F.R.C.P. (Lond.). **Surgery:** P. T. Crymble, M.B., F.R.C.S. (Eng.). **Materia Medica and Therapeutics:** J. T. Lewis, M.D., B.Sc., F.R.C.P. (Lond.). **Midwifery and Gynaecology:** C. G. Lowry, M.D., F.R.C.S.I. **Pathology:** J. H. Biggart, M.D., D.Sc. **Medical Jurisprudence:** J. H. Biggart, M.D., D.Sc. **Ophthalmology and Otolaryngology:** J. R. Wheeler, M.B., F.R.C.S. (Edin.). **Public Health Administration:** C. S. Thompson, M.D., D.P.H. **Public Health:** W. J. Wilson, B.A., D.Sc., M.D., D.P.H. **Physics:** K. G. Emelius, M.A., Ph.D.; R. H. Sloane, D.Sc. **Zoology:** T. T. Flynn, D.Sc.; G. Williams, M.Sc. **Botany:** James Small, D.Sc.; Mary J. Lynn, D.Sc. **Chemistry:** A. W. Stewart, D.Sc. **Biochemistry:** D. C. Harrison, D.Sc., Ph.D. **Organic Chemistry:** H. Graham, D.Sc. **Vaccination:** S. R. Armstrong, M.D. **Bacteriology:** N. C. Graham, M.B. **Psychological Medicine:** Dorothy Gardner, M.B., D.P.H. **D.P.M. Infant Hygiene and Diseases of Children:** F. M. B. Allen, M.D., F.R.C.P. (Lond.).

The Lectures of Winter Session 1943-44 will commence on Friday, 1st October. The Fees for a complete Medical Course (including Hospital Fees) amount to about £250. Scholarships will be open for competition at the Winter and Summer Professional Examinations. The Entrance Scholarship Examinations are held in June of each year.

RIDDEL HALL, situated a short distance from the University, offers residence for women students. Full particulars can be obtained from the Warden, Riddel Hall, Stranmillis, Belfast.

## HOSPITALS RECOGNISED FOR CLINICAL INSTRUCTION

Royal Victoria Hospital, Mater Infirmorum Hospital, Belfast Union Infirmary, City Fever Hospitals, Purdysburn, and Union Fever Hospital, Royal Maternity Hospital, Belfast Hospital for Sick Children, Ulster Hospital for Diseases of Children and Women, Belfast Ophthalmic Hospital and Eye and Ear Dispensary, Benn Ulster Eye, Ear and Throat Hospital, Samaritan Hospital, Forster Green Hospital for Diseases of the Chest, Belfast Hospital for Diseases of the Skin, Belfast Mental Hospital.

The Calendar, containing full information regarding the new Regulations for Courses, Fees, Scholarships, etc., can be had on application to the Bursar, Queen's University, Belfast, price 3s., postage 6d. extra.

RICHARD H. HUNTER, M.D., M.Ch., Ph.D., Secretary.

## EXAMINING BOARD IN ENGLAND

BY THE  
ROYAL COLLEGE OF PHYSICIANS OF  
LONDON  
AND THE  
ROYAL COLLEGE OF SURGEONS OF  
ENGLAND

Notice is hereby given that the following Examinations will commence on the dates stated below:

DIPLOMA IN CHILD HEALTH

MONDAY, SEPTEMBER 27

DIPLOMA IN PUBLIC HEALTH

MONDAY, OCTOBER 18

Candidates who have fulfilled the necessary conditions, and who desire to present themselves for Examination, must give notice in writing to the Secretary, Examination Hall, 8/11, Queen Square, London, W.C.1, at least twenty-one days before the date of the Examination, transmitting at the same time such certificates as may be required by the Regulations of the Board, together with the amount of the fee due (D.C.H. = £6 6s., D.P.H. = £6 6s. for each part).

HORACE H. REW, Secretary.

## ROYAL COLLEGE OF PHYSICIANS OF EDINBURGH.

## ROYAL COLLEGE OF SURGEONS OF EDINBURGH.

## ROYAL FACULTY OF PHYSICIANS AND SURGEONS OF GLASGOW.

COPIES OF REGULATIONS for the TRIPLE QUALIFICATION (L.R.C.P. Ed., L.R.C.S. Ed., and L.R.F.P. & S.G.), containing dates of Professional Examinations for the year 1943-44, Curriculum, etc., may be had on application to the Registrar, Surgeons' Hall, 18, Nicolson Street, Edinburgh, 8; or to the Registrar, 242, St. Vincent Street, Glasgow, C2.

## THE LONDON HOMOEOPATHIC HOSPITAL (Incorporated by Royal Charter) GREAT ORMOND STREET AND QUEEN SQUARE, W.C.1

Courses of Lectures on Homoeopathy for Post-graduates and Medical Practitioners  
AUTUMN AND WINTER SESSION 1943-44

## HONYMAN-GILLESPIE LECTURESHIP Thirty-fifth Year

A Series of Lectures on  
HOMOEOPATHIC MATERIA MEDICA  
AND THERAPEUTICS

Accompanied with Clinical Demonstrations

will be given at the Hospital by CHARLES E. WHEELER, M.D., B.S., B.Sc. (Lond.), Consulting Physician to the London Homoeopathic Hospital, Mondays and Thursdays, October, 1943, to March, 1944, commencing Monday, October 18, at 2.30 p.m.; and ARTHUR D. C. MACGOWAN, M.B., Ch.B. Glas., Physician to the London Homoeopathic Hospital on Fridays, January to March, 1944, commencing January 7, at 2.30 p.m.

A course of Lectures will also be given under the auspices of the Honyman-Gillespie Trust at the GLASGOW HOMOEOPATHIC HOSPITAL, January to March, 1944, further particulars of which can be obtained from G. LITHGOW WILSON, M.B., Ch.B., 6, Belgrave Terrace, Great Western Road, Glasgow, W.2.

## THE COMPTON-BURNETT LECTURES

A Course of Ten Lectures on  
HOMOEOPATHIC PHILOSOPHY AND  
PRESCRIBING

will be given by Sir JOHN WEIR, G.C.V.O., M.B., Ch.B. Glas., Physician to His Majesty the King, Physician in Ordinary to H.M. Queen Mary, Consulting Physician to the London Homoeopathic Hospital, at the Winter Session only, on Fridays, at 2.30 p.m., October to December, commencing October 15.

## TUTORIAL CLASS

A course of Ten Lectures on the Study of the Repertory will be given by AGNES MONCRIEFF, M.B., Ch.B. Glas., Assistant Physician for Diseases of Children to the London Homoeopathic Hospital, Fridays, at 3.30 p.m., October to December, commencing October 15.

## CLINICAL TUTORIALS

On Monday and Friday afternoons at 2 o'clock throughout the year the Medical Tutor to the Hospital, WILLIAM WILSON ROURKE, M.B., Ch.B. Glas., conducts an Out-patient Clinic for the purpose of instruction in the application of Homoeopathic principles.

## THE SIR HENRY TYLER SCHOLARSHIP COMMITTEE

also offer Scholarships to Medical Men in the Provinces desirous of taking a Postgraduate Course at the London Homoeopathic Hospital during the Ten Compton-Burnett Lectures. Prospectus and further information regarding Scholarships may be obtained on application to the Secretary, London Homoeopathic Hospital, W.C.1.

## CORRESPONDENCE COURSE

For the benefit of Doctors unable to attend the Postgraduate Lectures a Postgraduate Correspondence Course has been inaugurated under the auspices of the British Homoeopathic Association. For particulars apply to the Medical Secretary, British Homoeopathic Association, 43, Russell Square, London, W.C.1.

## UNIVERSITY OF LONDON OPHTHALMIC HOSPITAL MEDICAL SCHOOL ROYAL LONDON OPHTHALMIC HOSPITAL (Moorfields Eye Hospital) City Road, E.C.1

Qualified Medical Practitioners and Registered Medical Students may enter on the Practice of the Royal London Ophthalmic Hospital (Moorfields) at any time, and are, on certain conditions, eligible for appointment as Chief Clinical Assistant, Clinical Assistant, and Junior Assistant.

Courses of Instruction, extending over a period of five months, begin in October and March.

## DIPLOMA IN OPHTHALMIC MEDICINE AND SURGERY AND OTHER DEGREES IN OPHTHALMOLOGY

A complete curriculum is specially designed to meet the requirements of candidates entering for these examinations.

Fees for the Practice of the Hospital: Perpetual, £5 5s. 0d.; three to six months, £3 3s. 0d.; two months, £2 2s. 0d.; one month, £1 1s. 0d.

Clinical work begins at 9 a.m. daily. Operations are performed between 10 a.m. and 1 p.m.

For further particulars apply to the Secretary to the Medical School at the Royal London Ophthalmic Hospital, City Road, E.C.1; or to the Dean, ROBERT DAVENPORT, M.B., B.S., F.R.C.S.

**NOTICE—Applications for vacancies advertised should, except where otherwise specified, state name, address, age, nationality, qualifications with dates, and be accompanied by copies of three recent testimonials with short statement of experience and appointments held. Unless closing date is stated applications should be sent at once.**

**HIS MAJESTY'S COLONIAL SERVICE.** The Colonial Medical Service. Vacancies for Medical Officers.—The maintenance of an efficient Colonial Medical Service constitutes a vital part of the national war effort, and it is most important that the Service should be assured of an adequate supply of doctors. The Secretary of State for the Colonies therefore invites applications from doctors possessing a medical qualification registrable in the United Kingdom who are British subjects and who are under 35 years of age. Medical Officers are appointed in the first instance for general service, but there are ample opportunities for work in special branches of medicine and surgery, in public health, and in medical research. The normal salary scale is from £600 to between £1,000 to £1,120. There are large numbers of super-scale posts, to which promotion is made on merit and which carry higher salaries. Government quarters, in many cases free of rent, and first-class passages to and from the Colonies, are provided, and an adequate pension scheme is in force. Selected candidates are normally required to attend a course of instruction in Tropical Medicine and Hygiene either before proceeding overseas or during their first period of leave. Further particulars, including the regulations governing admission to the Colonial Medical Service, may be obtained from the *Director of Recruitment (Colonial Service)*, 2, Park Street, London, W.1.

**INDIAN MEDICAL SERVICE.** Recruitment of Women Medical Officers.—The Government of India are prepared to recruit a limited number of women medical officers for service with the Indian Medical Service for the duration of the war. Applicants must be British subjects, of not more than 45 years of age, and those selected will be appointed in the rank of Lieutenants. Antedate of seniority may be granted up to a maximum period of 6½ years in respect of resident hospital appointments, higher qualifications, and/or professional experience. The antedate will count for pay and promotion, but, in the case of candidates recruited in this country, higher rank will not be assumed until the date of disembarkation in India. On termination of service, a minimum gratuity is guaranteed to those officers who complete one year of service, viz., Rs. 2,000 to officers whose registrable medical qualification is dated before January 1, 1940, and Rs. 1,000 to those who qualified after that date, plus one month's pay for each further completed year of Army service. Further particulars regarding rates of pay, etc., may be obtained from the Medical Adviser, India Office, London, S.W.1, or from the Secretary, Military Department, India Office, to whom all inquiries should be addressed.

**COUNTY BOROUGH OF IPSWICH, ASSISTANT MEDICAL OFFICER OF HEALTH.**—Applications are invited from registered medical practitioners for the above whole-time temporary appointment, probably for the duration of the war. The possession of the Degree in Public Health or an equivalent qualification will be an advantage. The salary scale is £600 per annum, rising by annual increments of £25 to £700, plus war bonus at the rate of £24 per annum, and travelling expenses. The successful candidate will be required to devote the whole of his or her time to the duties of the office, to assist generally as directed by the Medical Officer of Health in the administration of the various health services of the Council. The approval of the Ministry of Health has been obtained for the appointment, and candidates should submit with their applications full information as to their liability for military service, medical fitness, and position as regards deferment. Applications, accompanied by not more than three recent testimonials, and endorsed "Assistant Medical Officer of Health," should be forwarded to the Medical Officer of Health, Elm Street, Ipswich, at once.—A. Moffat, Town Clerk, Town Hall, Ipswich.

**VICTORIA HOSPITAL, Blackpool** (normal complement 200 beds, wartime complement 630 beds).—Applications are invited from registered medical practitioners, female, for the appointment of **RESIDENT ANAESTHETIST (A)**, to become vacant in October, 1943, including practitioners within three months of qualification who are liable to service under the National Service Acts. The appointment is for a period of six months. Salary is at the rate of £200 per annum, with full residential emoluments. Applications, stating age, qualifications with dates, nationality, and present post, and accompanied by copies of three recent testimonials, should be sent to the undersigned immediately.—Walter R. Smith, General Superintendent.

**WEST KENT GENERAL HOSPITAL** (Incorporated), Maidstone (135—250 E.M.S.—beds). **HOUSE PHYSICIAN (B2) and HOUSE SURGEON (B2).**—Applications are invited from registered medical practitioners, male and female, for the appointment of House Physician (B2) and House Surgeon (B2), now vacant, including R and W practitioners who now hold A posts. The appointments will be limited to six months. Salary at the rate of £200 per annum, with full residential emoluments. Applications should reach the undersigned forthwith.—Edward J. Gregg, House Governor and Secretary.

**COUNTY BOROUGH OF SOUTHEAST-ON-SEA.** Southend Municipal Hospital, Rochford, Essex.—Applications are invited from registered medical practitioners of either sex, including R and W practitioners who now hold A posts, for the appointment of **RESIDENT ASSISTANT MEDICAL OFFICER (B2)** at the Southend Municipal Hospital, Rochford, Essex. Previous experience in the administration of anaesthetics is essential. The appointment will be for a period of one year and subject to one month's notice on either side, except to R and W practitioners, when it will be limited to six months. The salary is at the rate of £325 per annum, with full residential emoluments, plus war bonus. The person appointed will be liable to pay superannuation contributions if the provisions of the Local Government Officers' Superannuation Acts are applicable. Application forms, obtainable from the Medical Superintendent, Southend Municipal Hospital, Rochford, Essex, should be returned to him not later than Monday, September 20.—H. J. Worwood, Town Clerk, Town Clerk's Office, Southend-on-Sea.

**COUNTY BOROUGH OF EASTBOURNE, TEMPORARY DEPUTY OR ASSISTANT MEDICAL OFFICER OF HEALTH AND TEMPORARY DEPUTY OR ASSISTANT SCHOOL MEDICAL OFFICER.**—Applications are invited from suitably qualified persons, men or women, for the above appointment. The salary will be within the scale of £600—£700 per annum, and the commencing salary will be determined by qualifications and experience. Car allowance at the rate of £75 per annum will be paid in addition. Further particulars and forms of application may be obtained from the undersigned, to whom they must be returned as soon as possible.—John Fenton, Medical Officer of Health, Torfield Court, St. Anne's Road, Eastbourne.

**CITY OF PORTSMOUTH, Saint Mary's Hospital** (1,200 beds).—Applications are invited from male registered medical practitioners for the appointment of **JUNIOR RESIDENT MEDICAL OFFICER (A post)**, to become vacant on September 18 next, including practitioners within three months of qualification who are liable to service under the National Service Acts. If held by a practitioner who is liable under these Acts, the appointment will be for a period of six months, otherwise it will be for a period of twelve months. The salary is at the rate of £250 per annum, with residential emoluments valued at £150 per annum, and a temporary cost-of-living bonus, at present payable at the rate of 6s. 6d. per week. Application forms may be obtained from, and must be returned to, the Medical Officer of Health, Northern Secondary School, Mayfield Road, Portsmouth.—Frederick Sparks, Town Clerk, Municipal Offices, Royal Beach Hotel, Southsea.

**ZETLAND COUNTY COUNCIL.**—Wanted, **MEDICAL OFFICER AND PUBLIC VACCINATOR** for the district of Whalsay and Skerries, Shetland. The appointment requires the approval of the Department of Health for Scotland and carries the following remuneration: (1) a fixed annual grant from the Department of such an amount as may be adjusted between them and the successful applicant; (2) Health Insurance capitation fees in respect of a panel numbering at present about 217; salary from Zetland County Council (exclusive of the cost of medicines supplied to Poor Law patients), £45 per annum; and (4) fees from private practice. Tenancy of a house is available. Applications (stating age, married or single, past and present appointments, and when free), with three copies of recent testimonials, are to be lodged not later than September 18, 1943, with R. C. Thomson, Clerk to the Public Health Department, County Buildings, Lerwick.

**NORTHAMPTONSHIRE COUNTY COUNCIL, TEMPORARY ASSISTANT MEDICAL OFFICER OF HEALTH.**—Applications are invited from duly registered medical practitioners of either sex for the above-mentioned appointment. Salary will be at the rate of £500 per annum, rising by increments of £25 per annum to £700 per annum, but the initial salary may be fixed, according to the experience of the candidate appointed, at a higher figure, but not exceeding £600 per annum, plus war bonus. The appointment is likely to continue for the duration of the war but will be terminable by two months' notice on either side. Candidates must have had special post graduate experience in infant welfare, ante-natal and maternity work. The officer appointed will be required to provide a motor car for which a travelling allowance will be paid in accordance with the scale approved by the Council. The normal duties will be in relation to the maternity and child welfare and school medical services, but the officer appointed will be required to carry out any other duties assigned by the County Medical Officer of Health. Medical officers who by age are liable for military service must, irrespective of medical unfitness or other exemption, ascertain from the Ministry of Health whether they may apply for the vacancy. Applications should be sent not later than September 18, to J. Alan Turner, Clerk of the County Council, County Hall, Northampton.

**CITY OF PLYMOUTH.** Medical Officer of Health's Department. City Isolation Hospital. Mount Gold Orthopaedic and Tuberculosis Hospital.—Applications are invited from registered medical practitioners for the appointment of whole-time temporary **MEDICAL SUPERINTENDENT** for the above hospitals during the absence on war service of the present holder, and probably for the duration of the war. Salary £800 per annum, with increments of £50 every two years, to £938, together with house, furnished or unfurnished by mutual arrangement. Applicants must have had experience in the diagnosis and treatment of infectious disease, and will be responsible for the administration of the hospitals under the general direction of the Medical Officer of Health. Applications will not be considered from practitioners liable for service under the National Service Acts, and the appointment is subject to the passing of a satisfactory medical examination, and is terminable by three months' notice on either side. Applications should be sent to the undersigned as soon as possible.—T. Peirson, Medical Officer of Health.

**ESSEX COUNTY COUNCIL.** Medical Staff.—Applications are invited from registered male medical practitioners for the undermentioned appointments at the Essex County Council Hospital, Broomfield, which contains 300 beds for the treatment of male patients suffering from pulmonary or surgical tuberculosis: **SECOND ASSISTANT MEDICAL OFFICER (B1).**—Applicants should have held house appointments and have had experience in the treatment of tuberculosis. The appointment will be limited to a period not exceeding four years. Suitably qualified R practitioners holding B2 appointments are invited to apply. Applications from R practitioners now holding B1 appointments cannot be considered unless the applicants have been rejected by the R.A.M.C. Salary at the rate of £350 a year, rising, subject to satisfactory service, by annual increments of £25, to £425 a year, together with residential emoluments valued at £160 a year. **JUNIOR RESIDENT MEDICAL OFFICER (B2).**—Applicants may be R practitioners who now hold A posts. If held by an R practitioner, the appointment will be limited to six months, otherwise it will be for a period of twelve months. The salary is at the rate of £250 a year, together with residential emoluments valued at £160 a year. Forms of application may be obtained from the undersigned, to whom they should be returned completed, accompanied by copies of three recent testimonials, and in envelopes endorsed with the name of the post sought, not later than September 21, 1943. Canvassing, whether directly or indirectly, is forbidden.—John E. Lightburn, Clerk of the County Council, County Hall, Chelmsford.

**ESSEX COUNTY COUNCIL, TEMPORARY APPOINTMENT OF ASSISTANT COUNTY MEDICAL OFFICER OF HEALTH.**—The County Council invite applications for the above-mentioned temporary appointment from registered medical practitioners. The salary attaching to the appointment will be at the rate of £500 a year, rising, subject to satisfactory conduct and service, by annual increments of £25, to £700 a year, but the commencing salary may be varied, having regard to the experience and capabilities of the candidate appointed. Applications must be on the prescribed form, obtainable from the undersigned. Last date for receipt of applications, September 21, 1943. Canvassing, whether directly or indirectly, is forbidden.—John E. Lightburn, Clerk of the County Council, County Hall, Chelmsford.

**STAFFORDSHIRE COUNTY COUNCIL.** Sedgley Emergency Hospital. **RESIDENT MEDICAL OFFICER (B2).**—Applications are invited from female registered medical practitioners for the above-mentioned appointment, including W practitioners who now hold A posts. If held by a W practitioner the appointment, which will be subject to one month's notice on either side, will be limited to six months; otherwise it will not exceed one year. The salary is at the rate of £200 per annum, with full residential emoluments valued at £100 per annum. Applications, accompanied by copies of three recent testimonials, should be sent to reach the undersigned not later than September 9, 1943.—T. H. Evans, Clerk of the County Council, County Buildings, Stafford.

**LIVERPOOL MATERNITY HOSPITAL** Oxford Street, Liverpool.—Applications are invited from registered medical practitioners, male and female, for the appointment of a **HOUSE SURGEON (B2)**, to become vacant on October 1 next, including R and W practitioners who now hold A posts. If held by an R or a W practitioner the appointment will be limited to six months, otherwise it may be extended. The salary is the rate of £90 per annum, with full residential emoluments. Membership of a Medical Defence Society is a condition of appointment. Applications, stating age, qualifications, with dates, nationality and present post, and accompanied by copies of three recent testimonials, should be addressed to the Honorary Secretary of the Medical Board at the Hospital, as above, not later than September 11.



**IMPORTANT—All applicants should read the notice about qualifications required, etc., printed at the top of page 13**

**CITY OF MANCHESTER. CRUMPSALL HOSPITAL** (1,400 beds) (Recognized under the regulations for the F.R.C.S.). **Appointment of RESIDENT ASSISTANT MEDICAL OFFICER (A).**—Applications are invited from registered medical practitioners, male or female, for the above-mentioned appointment, which will become vacant on October 8, 1943, including practitioners within three months of qualification who are liable to service under the National Service Acts. If held by a practitioner who is liable under these Acts, the appointment will be for a period of six months, otherwise it will be for a period of twelve months. The duties of the post are mainly medical. The basic salary for the appointment is £200 per annum, with board, residence and laundry in addition, subject to the Manchester Corporation conditions of service. A temporary cost-of-living wages addition is payable in addition to the salary stated. Applications, stating the full name, age (giving date of birth), nationality, professional qualifications (with dates), particulars of present appointment and past hospital appointments, are to be addressed to the Medical Superintendent, Crumpsall Hospital, Crumpsall, Manchester, 8, at once. Canvassing is prohibited.

**TEMPORARY RESIDENT ANAESTHETIST (B1).**—Applications are invited from registered medical practitioners, male or female, for the above mentioned post, which will become vacant at the end of October, 1943. The appointment will be temporary for the duration of the war. Suitably qualified R and W practitioners holding B2 appointments are invited to apply. Applications from R practitioners now holding B1 appointments cannot be considered unless they have been rejected by the R.A.M.C. The basic cash salary scale commences at £350 per annum and rises by annual increments of £25 to a maximum of £450, plus a temporary cost-of-living wages addition, with board, residence and laundry in addition, subject to the Manchester Corporation conditions of service. Full information and forms of application may be obtained from the Medical Officer of Health, Hospitals Administration Section, P.O. Box No. 399, Town Hall, Manchester, 2, and applications for the post must be received by him not later than September 16, 1943. Canvassing in any form is prohibited.—R. H. Adcock, Town Clerk, Town Hall, Manchester, 2.

**CITY OF PLYMOUTH.** City General Hospital (320 beds).—Applications are invited from duly qualified and registered medical practitioners, male and female, for the post of ASSISTANT MEDICAL OFFICER (B2), including R and W practitioners who now hold A posts. If held by an R or a W practitioner, the appointment will be limited to six months, otherwise it will be renewable for a further period of six months, terminable by one month's notice on either side. Salary will be at the rate of £300 per annum, plus a war bonus of £33 16s. for a male practitioner, and £26 for a female, with full residential emoluments. All fees received by the officer must be refunded to the Council. The duties will be chiefly in the medical side of the hospital. Further details of the post are obtainable from the Medical Superintendent of the City Hospital, Plymouth. Applications should be sent to the undersigned as soon as possible.—T. Peirson, Medical Officer of Health, Seven Trees, Lipson Road, Plymouth.

**KENT COUNTY COUNCIL.** County Hospital, Dartford, Kent. **CONSULTANT SURGEON.**—Applications are invited from suitably qualified medical practitioners for the appointment of temporary Consultant Surgeon at the County Hospital, Dartford. The duties will comprise one half-day session each week and the remuneration will be at the rate of £170 a year. The fee for any emergency visit will be £5 5s. First-class return railway expenses between residence and the hospital will be paid. The appointment will be, in the first instance, for the duration of the war, when the position will be reviewed. Applications, which should give the names and addresses of two persons for reference, etc., should be made to the Public Assistance Officer, County Hall, Maidstone, and should reach him by September 14, 1943.—W. L. Platts, Clerk of the County Council, County Hall, Maidstone.

**LANCASHIRE COUNTY COUNCIL.**—The Lancashire County Council propose to appoint a whole-time TEMPORARY DENTAL SURGEON, male or female, and invite applications from fully qualified and registered Dental Surgeons. The duties of the post include the dental inspection and treatment of school children; work under the Maternity and Child Welfare Scheme; and such other duties as may from time to time be imposed by the County Council. The salary will be at the rate of £550 per annum, together with allowances for travelling, etc. Applications must be made upon a form which can be obtained from the County Medical Officer of Health, School Medical and Child Welfare Department, County Offices, Preston, to whom the completed form should be returned not later than September 18, 1943. All communications must be endorsed "Dental Surgeon." Canvassing is strictly forbidden and will disqualify.—George Etherton, Clerk of the County Council, County Offices, Preston.

**SURREY COUNTY COUNCIL.**  
**ST. HELIER COUNTY HOSPITAL** (862 beds), Carshalton. **JUNIOR ASSISTANT OBSTETRICIAN (B2),** Maternity and Gynaecological Unit.—Applications are invited from registered medical practitioners, male and female, for the appointment of Junior Assistant Obstetrician (B2), including R and W practitioners who now hold A posts. If held by an R or a W practitioner the appointment will be limited to six months; otherwise it will be for a period of one year. Salary £250 per annum, with full residential emoluments. Apply to Med. Supt.  
**ST. HELIER HOSPITAL** (862 beds), Carshalton, Public Health Department. **HOUSE OFFICER (A).**—Applications are invited from registered medical practitioners, male and female, for the above appointment, including practitioners within three months of qualification who are liable to service under the National Service Acts. If held by a practitioner who is liable under these Acts appointment will be for a period of six months; otherwise it will not exceed one year. Salary is at the rate of £120 per annum, plus full residential emoluments. Apply to Medical Superintendent.

**GROVE ROAD INSTITUTION,** Richmond (260 beds, mainly chronic sick), Public Assistance Department.—Applications are invited from registered medical practitioners, male and female, for the appointment of ASSISTANT MEDICAL OFFICER (B2), including R and W practitioners who now hold A posts. If held by an R or W practitioner the appointment will be limited to six months; otherwise it will be for a period of one year. Salary £250 per annum, with full residential emoluments. Apply to County Medical Officer, County Hall, Kingston-upon-Thames.

**WARREN ROAD HOSPITAL,** Guildford (General Hospital, 450 beds).—**RESIDENT ASSISTANT MEDICAL OFFICER (B1).**—Applications are invited from registered practitioners, male and female, for the appointment of Resident Assistant Medical Officer (B1). The position will be available for approximately the further duration of the war, and is subject to one month's notice on either side. Suitably qualified R and W practitioners holding B2 appointments may apply. Applications from R practitioners holding B1 posts cannot be considered unless they have been rejected by the R.A.M.C. Commencing salary according to experience at a point on the grade £350 by £25 to £450 per annum, plus full residential emoluments. Applications to the Medical Superintendent.

**HEREFORDSHIRE COUNTY COUNCIL.**—An ASSISTANT MEDICAL OFFICER (B1) is required for the County Council Hospital (476 beds), Hereford. Applicants must be registered medical practitioners who have held hospital appointments. Surgical experience essential and F.R.C.S. preferred. Salary for the first year £350 per annum, plus a temporary cost-of-living bonus of £33 16s. per annum and plus usual residential emoluments. If extended beyond one year the salary will rise by annual increments of £25 to £450 per annum, plus bonus and emoluments. Applications, stating age, nationality, qualifications, with dates, experience and details of previous appointments, to reach the Medical Superintendent as soon as possible.

**LONDON CHEST HOSPITAL,** Victoria Park, E.2. **HOUSE PHYSICIAN (B2),** male or female, required on November 1. Applications are invited from R and W practitioners who now hold A posts. Six months' appointment. Salary at the rate of £150 per annum. Board, residence, and laundry provided.

**HOUSE SURGEON (B2),** male or female, required on November 1, with previous surgical experience, preferably thoracic. Salary £150 per annum, with full residential emoluments. R and W practitioners who now hold A posts may apply, when appointment will be limited to six months. Applications, with copies of three recent testimonials, should be sent by September 25 to the Secretary.

**LONDON HOSPITAL,** E.1.—Applications are invited from registered medical practitioners for the post of ASSISTANT (B1), male or female, in the Department of Radiotherapy. Previous experience desirable but not essential. Suitably qualified R and W practitioners holding B2 appointments are invited to apply. Applications from R practitioners now holding B1 appointments cannot be considered unless they have been rejected by the R.A.M.C. Minimum salary £450. Applications, with copies of three references, to House Governor.

**WEST SUFFOLK GENERAL HOSPITAL,** Bury St. Edmunds. (191 civilian beds, 224 E.M.S. and reserve beds).—Applications are invited from registered medical practitioners for the appointment of HOUSE SURGEON (B2) to take charge of E.M.S. beds, for general and traumatic surgery. Experience in anaesthetics essential. Salary, with full residential emoluments, will be at the rate of £200 per annum. R and W practitioners may apply, when appointment will be limited to six months, otherwise it will be for six months with a possibility of renewal at the pleasure of the Committee of Management. Applications, stating age, nationality, qualifications, and accompanied by copies of testimonials, to E. E. Hardwicke, Secretary.

**DERBYSHIRE COUNTY COUNCIL.** TEMPORARY WOMAN ASSISTANT MATERNITY AND CHILD WELFARE MEDICAL OFFICER.—The Derbyshire County Council require the services of a fully qualified whole-time Woman Assistant Maternity and Child Welfare Medical Officer with experience in ante-natal work, midwifery and children's diseases, to hold (under the direction of the County Medical Officer of Health) consultations at the Ante-natal and Maternity and Child Welfare Centres of the Derbyshire County Council, and to perform such other duties as appertain to the office. The salary will be £600 per annum, rising by £25 per annum to £700 per annum, plus a war bonus, which at the moment is £24 per annum, with a travelling allowance in accordance with the county scale, which at present is as follows: cars of 8 h.p. and under, £70 per annum, plus 2d. per mile; cars of 9 h.p. and over £75 per annum, plus 2½d. per mile. The post will be subject to the provisions of the Local Government Superannuation Act, 1937, and the successful candidate will be required to pass a medical examination. The appointment will be terminable by three months' notice on either side. Forms of application may be obtained from the undersigned, to whom they should be returned not later than September 18, 1943. The appointment is approved by the Ministry.—W. M. Ash, County Medical Officer of Health, New County Offices, St. Mary's Gate, Derby.

**GLAMORGAN COUNTY COUNCIL.** Hensol Castle Mental Deficiency Colony, Pontyclun, Glam. **ASSISTANT MEDICAL OFFICER (B1).**—Applications are invited from registered medical practitioners for the appointment of Assistant Medical Officer (B1), now vacant, at Hensol Castle Mental Deficiency Colony. Preference will be given to an applicant who has had previous experience in mental deficiency work. Suitably qualified R and W practitioners holding B2 appointments are invited to apply. Applications from R practitioners now holding B1 appointments cannot be considered unless they have been rejected by the R.A.M.C. Salary is at the rate of £350, rising by annual increments of £25 to a maximum of £450 plus prevailing cost-of-living bonus, together with board, lodging, and laundry, valued for superannuation purposes at £120. An additional £50 per annum will be paid if the successful candidate holds the D.P.M. Forms of application and further particulars of the appointment may be received on application to the Medical Superintendent, Hensol Castle, Pontyclun, by whom applications must be received not later than September 18, 1943.—D. J. Parry, Deputy Clerk of the County Council, Glamorgan County Hall, Cardiff.

**BOROUGH OF WILLESDEN. RESIDENT MEDICAL OFFICER.**—Applications are invited for the post of Resident Medical Officer (B2) at the Willesden Municipal (Fever) Hospital. Open to R and W practitioners who now hold A posts, when the appointment will be limited to six months, otherwise may be extended to one year. The salary will be at the rate of £250, plus bonus of £16 19s. for men, and £13 0s. 6d. for women, per annum, with board, lodging and laundry, and the appointment will be subject to the Staff Regulations of the Council. The hospital admits all the notifiable diseases. Applications to be sent to the Medical Superintendent, Willesden Municipal Hospital, Brentford Road, Neasden, N.W.10, as soon as possible.—W. T. Pirie, Town Clerk.

**HAMPSHIRE COUNTY COUNCIL.** County Council Hospital, Clayhall Road, Alverstoke, Gosport, Hants (60 beds).—Applications are invited from registered medical practitioners for the appointment of ASSISTANT RESIDENT MEDICAL OFFICER (B1), now vacant. Applicants should have held house appointments and had surgical experience. Preference will be given to candidates holding Diploma of F.R.C.S. Suitably qualified R and W practitioners holding B2 appointments are invited to apply. Applications from R practitioners now holding B1 appointments cannot be considered unless they have been rejected by the R.A.M.C. Salary is at the rate of £350 by £25 to £450. Apply to the County Medical Officer, The Castle, Winchester.

**THE BURSLEM HAYWOOD AND TUNSTALL WAR MEMORIAL HOSPITAL,** High Lane, Tunstall, Stoke-on-Trent. **HOUSE SURGEON (A).**—Applications are invited from registered medical practitioners, male or female, for the appointment of a House Surgeon (A), to become vacant immediately, including practitioners within three months of qualification who are liable to service under the National Service Acts. If held by a practitioner who is liable under these Acts the appointment will be for a period of six months. Salary is at the rate of £175 per annum, with full residential emoluments.—C. E. Lowndes, Sec.

**ROYAL SURREY COUNTY HOSPITAL,** Guildford.—A vacancy exists on the medical staff for ASSISTANT PHYSICIAN for the duration, but the post will be advertised again after the war. Applications, with not more than three testimonials, should be sent to the Secretary-Superintendent by September 18, 1943.

**IMPORTANT—All applicants should read the notice about qualifications required, etc., printed at the top of page 13**

**BIRMINGHAM MATERNITY HOSPITAL.**—Applications are invited from registered medical practitioners, male or female, for the appointment of **HOUSE SURGEON (B2)**, including R practitioners who now hold A posts. The appointment is for six months from October 1, 1943 (three months in hospital, three months on district). Salary to be at the rate of £100 per annum. Applications, with full particulars and copies of testimonials, to be sent immediately to Hugh C. Aston, C3, Kenilworth Court, Hagley Road, Birmingham, 16.

**DERBYSHIRE HOSPITAL FOR SICK CHILDREN** (84 beds). **HOUSE SURGEON (A)**.—Applications are invited from registered medical practitioners for the appointment of a House Surgeon (A), to become vacant on October 1, 1943, including practitioners within three months of qualification who are liable to service under the National Service Acts. If held by a practitioner—who is liable under these Acts appointment will be for a period of six months. Salary £130 per annum. Applications, stating age, qualifications, with dates and nationality, and accompanied by copies of three recent testimonials, should be sent to the undersigned forthwith. The Hospital is recognized by the Conjoint Board for the purposes of the Diploma in Child Health.—Arthur N. Whiston, Secretary, 42, St. Mary's Gate, Derby.

**GRANTHAM HOSPITAL** (125 beds). **RESIDENT MEDICAL OFFICER (B1)**.—Applications are invited from registered medical practitioners, male or female, for the appointment of Senior Resident Medical Officer, becoming vacant on October 1, 1943. Applicants should have held previous house appointments. The duties are mainly surgical. Suitably qualified R and W practitioners holding B2 appointments are invited to apply. Applications from R practitioners now holding B2 posts cannot be considered unless they have been rejected by the R.A.M.C. The salary payable will be at the rate of £225 per annum, with full residential emoluments. Applications should be sent to the undersigned as soon as possible.—John E. Ray, Secretary-Superintendent.

**HOLLOWAY SANATORIUM** (Hospital for Mental Diseases), Virginia Water, Surrey.—**JUNIOR ASSISTANT MEDICAL OFFICER (B1)** required for duration of war. Salary £350 per annum, rising by £25 per annum to £450, with board, lodging, lighting, laundry, and attendance. Should the candidate appointed hold the Diploma in Psychological Medicine the salary will be £400 per annum, if not, the latter increase will be made as soon as it is obtained. Suitably qualified R and W practitioners holding B2 appointments, also R practitioners holding B1 appointments and rejected by the R.A.M.C., may apply. Applications, accompanied by three testimonials, to be sent to the Medical Superintendent as soon as possible.

**NORTHAMPTON GENERAL HOSPITAL** (408 beds).—Applications are invited from registered medical practitioners, male or female, for the post of **ASSISTANT RADIOLOGIST**. Candidates should hold the qualification of D.M.R.E. or its equivalent. Salary £450-£600, according to experience. The X-ray Department is divided into diagnostics and therapy and candidates should have experience in one or the other. The person appointed will be required to work on his specialized line but must be willing to undertake work in either department if necessary. Applications are invited for the post of Physician to the Radio-Therapy Department. Candidates should have had training in X-ray Physics, especially related to Radio-Therapy, and some practical experience in the Radio-Therapy Department of a hospital. Salary £350-£600, according to experience. Federated Superannuation Scheme in force. Applications, with copies of three recent testimonials, should be sent to the Superintendent.

**NUNEATON EMERGENCY HOSPITAL**, County of Warwick.—Applications are invited from registered practitioners, male and female, for the appointment of **HOUSE SURGEON (A)** at the above hospital, including practitioners within three months of qualification who are liable for service under the National Service Acts. If held by a practitioner who is liable under these Acts, appointment will be for a period of six months, otherwise it will not exceed one year. Salary is at the rate of £200 per annum, with full residential emoluments. Forms of application to be obtained from the Public Assistance Officer, Shire Hall, Warwick, to whom they should be returned forthwith.

**THE STAMFORD, RUTLAND AND GENERAL INFIRMARY. RESIDENT ANAESTHETIST (B2)**.—Applications are invited from registered medical practitioners, male and female, for the appointment of Resident Anaesthetist (B2), to become vacant on October 1, 1943, including R and W practitioners who now hold A posts. If held by an R or a W practitioner, the appointment will be limited to six months, otherwise it will be for a period of three months. The salary is at the rate of £220 per annum, with full residential emoluments. Applications should be sent to the undersigned by September 9, 1943.—H. F. Donald, Secretary.

**ISOLATION HOSPITAL, CLATTERBRIDGE, WIRRAL. RESIDENT MEDICAL OFFICER (B1)**.—Applications are invited from registered medical practitioners for the appointment of **RESIDENT MEDICAL OFFICER (B1)**, to become vacant at the end of September, 1943. Preference will be given to applicants who have had experience in bacteriology—the hospital being equipped for the examination of swabs, etc. The hospital is a training school, and applicants must be prepared to lecture to the nurses. Suitably qualified R and W practitioners holding B2 appointments are invited to apply. Applications from R practitioners now holding B1 appointments cannot be considered unless they have been rejected by the R.A.M.C. The hospital is situated within easy distance of the Liverpool Medical School, and time will be allowed, as the work of the hospital permits, for attendance at higher qualification classes. Salary is at the rate of £265 per annum (including war bonus), with full residential emoluments. The appointment is for one year only, and is not renewable. Applications should be sent immediately to the Wirral Joint Hospital Board, Isolation Hospital, Clatterbridge, Wirral.

**ROYAL SALOP INFIRMARY, Shrewsbury. HOUSE SURGEON (B2)**.—Applications are invited from medical practitioners, male and female, for the appointment of Resident House Surgeon (B2), to become vacant in October, including R and W practitioners who now hold A posts. If held by an R or W practitioner, the appointment will be limited to six months, otherwise it will be for a period of six months. The salary is at the rate of £160 per annum, with full residential emoluments.

**HOUSE PHYSICIAN (A)**.—Applications are invited from registered medical practitioners, male and female, for the appointment of House Physician (A), to become vacant in September, including practitioners within three months of qualification who are liable to service under the National Service Acts. If held by a practitioner who is liable under these Acts, appointment will be for a period of six months, otherwise it will be for a period of six months. Salary is at the rate of £160 per annum, with full residential emoluments.—J. W. Noble, Secretary-Superintendent.

**ROYAL HAMPSHIRE COUNTY HOSPITAL, Winchester** (462 beds).—Applications are invited from registered medical practitioners, men or women, for the appointment of **HOUSE SURGEON (A)**, vacant September 15. Salary is at the rate of £175 per annum, with full residential emoluments. Practitioners within three months of qualification and liable under the National Service Acts may also apply, when appointment will be for a period of six months. Applications should be sent immediately to D. M. Stanbury, Acting Superintendent and Secretary.

**ROYAL SOUTH HANTS AND SOUTHAMPTON HOSPITAL, Southampton**.—Applications are invited for the post of **ASSISTANT RADIO-THERAPIST** in the Radium and Deep X-ray Department, either as locum tenens for a period of four months or as a permanent appointment, at a commencing salary at the rate of £550 per annum. The department is a Regional Centre under the National Radium Commission. Candidates must be holders of the D.M.R.E. or equivalent qualification. Applications should be sent to the House Governor and Secretary by Saturday, September 18, 1943.

#### AMENDED ADVERTISEMENT

**WALSALL GENERAL HOSPITAL. HONORARY GYNAECOLOGICAL SURGEON**.—Applications are invited for the post of Honorary Surgeon to the Gynaecological Department. Candidates should be Fellows of the Royal College of Surgeons of England or Edinburgh. An honorarium is attached to the appointment, which in the first place is for the duration of the war. Applications, together with testimonials, should reach the undersigned as soon as possible.—R. C. Millward, House Governor.

**WEST END HOSPITAL FOR NERVOUS DISEASES, 73, Welbeck Street, London, W.1.** In-patient Department, Gloucester Gate, Regent's Park, N.W.1.—Applications are invited from registered medical practitioners for the appointment of **RESIDENT HOUSE PHYSICIAN (B2)**, including R practitioners who now hold A posts. The appointment will be for six months. Salary at the rate of £150 per annum, with full residential emoluments. Applications should reach the undersigned forthwith.—V. F. Marshall, Secretary.

**WREXHAM AND EAST DENBIGHSHIRE WAR MEMORIAL HOSPITAL** (170 beds).—The Elective Committee invite applications for the post of **HONORARY PHYSICIAN** of Consultant standing and experience. Applications, stating age, qualifications, and experience, with copies (only) of not more than three testimonials, to be sent to the undersigned not later than first post Friday, September 17, 1943.—Leslie Spencer, Secretary.

**THE ROYAL HOSPITAL, Wolverhampton.** (Incorporated under Royal Charter.) (310 beds).—Applications are invited from registered medical practitioners, male, for the appointment of **HOUSE SURGEON, Fracture and Orthopaedic Department (B2)**, now vacant, including R practitioners who now hold A posts. If held by an R practitioner the appointment will be limited to six months. Salary is at the rate of £150 per annum, with full residential emoluments.

Applications are invited from registered medical practitioners, male or female, for the following post: **RESIDENT REGISTRAR** to the Ear, Nose, and Throat Dept. (B1 post). Candidates must have held house appointments and be competent to undertake routine clinical and operative work. Suitably qualified R and W practitioners who now hold B2 posts may apply. Applications from R practitioners who now hold B1 posts cannot be considered unless they have been rejected by the R.A.M.C. Salary £250 or more, according to experience.—W. Cockburn, House Governor.

**THE STAFFORDSHIRE GENERAL INFIRMARY, Stafford**.—Applications are invited from registered medical practitioners, male and female, for the appointment of a **HOUSE PHYSICIAN (A)**, to commence duties on October 1. Salary £196 per annum, with board-residence. Practitioners within three months of qualification and liable under the National Service Acts may also apply, when appointment will be for six months. Applications, with full particulars as to age and qualifications, accompanied by three recent testimonials, to be forwarded to the Secretary.

**THE ROYAL GWENT HOSPITAL, Newport, Mon.** **HONORARY PHYSICIAN**.—Applications are invited for the Office of Honorary Physician. The Regulations provide that the Honorary Physician shall hold the degree of Doctor of Medicine of a University of the United Kingdom or shall be a Fellow or Member of a Royal College of Physicians, and shall be in consulting practice and resident in Newport, Mon. An honorarium of £600 per annum will be paid, subject to revision at the end of five years. Particulars of the appointment can be obtained on application to the Secretary-Superintendent. Applications should be sent to the undersigned as soon as possible.—By Order of the Board of Directors, Alan Ruddle, Secretary-Superintendent.

**THE ROYAL CRIPPLES HOSPITAL Birmingham**.—One of the largest Orthopaedic Hospitals in the country with 338 beds for acute patients and large Out-patient Department in Birmingham, where 97,879 attendances were made in 1942. The Hospital is also responsible for staffing Out-patient Clinics in a number of adjoining towns. Applications are invited from registered medical practitioners, including R and W practitioners who now hold A posts, for the appointment of a **RESIDENT HOUSE SURGEON (B2)**, vacant immediately. Appointment will be for six months. Commencing salary not less than £200 per annum, with full residential emoluments. Applications to the Secretary, 80, Broad Street, Birmingham, 15.

**THE BELGRAVE HOSPITAL FOR CHILDREN, 1, CLAPHAM ROAD, S.W.9**.—The Committee of Management invite applications from registered medical practitioners, male and female, for the appointment of **RESIDENT HOUSE OFFICER (A)** vacant October 1. Salary is at the rate of £100 per annum, with full residential emoluments. The successful candidate would become eligible for a further emolument in the first-aid post if willing and able to undertake duties. Practitioners within three months of qualification and liable under the National Service Acts may apply, when appointment will be for a period of six months. Applications, with copies of testimonials stating age, should be forwarded as soon as possible to Thos. Clapham, Secretary.

**THE BOLTON ROYAL INFIRMARY** (245 beds).—Applications are invited from registered medical practitioners, male and female, for the appointment of **HOUSE PHYSICIAN (B2)**, to become vacant on September 29, 1943, including R and W practitioners who now hold A posts. If held by an R or a W practitioner, appointment will be limited to six months. Salary £200 per annum, with full residential emoluments. Applications to be forwarded to the undersigned.—Joseph Griffith, Supt.-Sec.

**THE WOMEN'S HOSPITAL, Liverpool**.—Applications are invited for the post of **TEMPORARY HONORARY ASSISTANT SURGEON**. Candidates must hold the Fellowship of the Royal College of Surgeons of England, Edinburgh or Ireland, or the degree of Master of Surgery of a recognized university of the United Kingdom. Applications, and the names of three referees, should reach the undersigned not later than October 4.—M. J. Harley, Secretary.

**FULMER CHASE, Bucks.**—**JUNIOR RESIDENT MEDICAL OFFICER (B2)**, required for six months for Maternity Hospital for the Wives of Officers. R and W practitioners who now hold A posts may apply. Salary according to grade.—Write Hon. Secretary, 60, Portland Place, W.1.



**IMPORTANT—All applicants should read the notice about qualifications required, etc., printed at the top of page 13**

**AMENDED ADVERTISEMENT.**  
**BOROUGH OF HOVE. TEMPORARY ASSISTANT MEDICAL OFFICER OF HEALTH AND ASSISTANT SCHOOL MEDICAL OFFICER.**—Applications from suitably qualified men or women, preferably not liable for military service, are invited for the above appointment, due to the resignation of the present holder of the post. Salary £650 per annum, together with a car allowance of £50 per annum, determinable on either side by three months' notice. The post is subject to the Local Government Superannuation Act, 1937, and to the successful candidate, who will be precluded from engaging in private practice, passing a medical examination. The duties include work in connexion with the Public Health and School Medical Services, and also Civil Defence. Preference will be given to candidates having a knowledge of infectious diseases, including tuberculosis, and possessing the D.P.H. The consent of the Ministry of Health has been given to this appointment. Applications, accompanied by full particulars of the candidate's qualifications and liability for military service, together with copies of three recent testimonials, should be sent to the Medical Officer of Health, Town Hall Annex, Third Avenue, Hove, on forms to be obtained from him and returned as soon as possible.—W. Jermyn Harrison, Town Clerk.

**THE ROYAL LIVERPOOL CHILDREN'S HOSPITAL, Myrtle Street, Liverpool, 7.**—Applications are invited from registered medical practitioners, male and female, for the appointment of a **HOUSE SURGEON (A)**, to become vacant on October 1, 1943, including practitioners within three months of qualification who are liable to service under the National Service Acts. If held by a practitioner who is liable under these Acts, appointment will be for a period of six months. Salary is at the rate of £100 per annum, with full residential emoluments. Applications, accompanied by copies of three recent testimonials and the name of a referee, should be sent to the Secretary of the Hospital by Monday, September 13, 1943.

Applications are invited from registered medical practitioners, male and female, for the appointment of **RESIDENT CASUALTY OFFICER (B2)**, to become vacant on October 1, 1943, including R and W practitioners who now hold A posts. If held by an R or a W practitioner, the appointment will be limited to six months. The salary is at the rate of £250 per annum, with full residential emoluments. Applications, accompanied by copies of three testimonials, and the name of a referee, should be sent to the Secretary of the Hospital by Monday, September 13, 1943.

Applications are invited from registered medical practitioners, male and female, for the appointment of a **RESIDENT SURGICAL OFFICER (A)** at the Heswall (Country) Branch of the Hospital (260 beds), to become vacant on October 1, 1943, including practitioners within three months of qualification who are liable to service under the National Service Acts. If held by a practitioner who is liable under these Acts, appointment will be for a period of six months. Salary is at the rate of £120 per annum, with full residential emoluments. Applications, accompanied by copies of three recent testimonials and the name of a referee, should be sent to the Secretary, Royal Liverpool Children's Hospital, Myrtle Street, Liverpool, 7, by Monday, September 13, 1943.

**ST. HELENS HOSPITAL. HOUSE SURGEONS (B2 and A).**—Applications are invited from registered medical practitioners for the following appointments: **House Surgeon (A)**, including practitioners within three months of qualification who are liable to service under the National Service Acts. If held by a practitioner liable under these Acts appointment will be for a period of six months. Salary £150 per annum. **House Surgeon (B2)**, including R and W practitioners who now hold A posts. If held by an R or W practitioner appointment will be limited to six months. Salary £225 per annum, both with full residential emoluments. Applications, stating age, qualifications, with dates and nationality, and accompanied by copies of three recent testimonials, should be sent to the undersigned immediately.—Geo. Harper, Secretary.

**GENERAL HOSPITAL, Nottingham, and Notts. Branch of the British Empire Cancer Campaign.**—A **MEDICAL OFFICER** required for the Radium and Deep X-ray Therapy Departments. Full time, non-resident. Salary £1,000 to £1,200 per annum, according to experience. Applications, stating age, qualifications, and experience, together with copies of testimonials, to be sent to the undersigned.—H. M. Stanley, House Governor and Secretary, General Hospital, Nottingham.

**HULL ROYAL INFIRMARY.**—Applications are invited from registered medical practitioners for the post of **CASUALTY OFFICER (A)**, vacant September. Candidates may include practitioners within three months of qualification who are liable to service under the National Service Acts. If held by practitioners who are liable under these Acts the appointment will be held for six months. Salary £200 per annum, with full residential emoluments. Applications should be addressed to R. J. Carless, House Governor.

**CITY OF BIRMINGHAM. SENIOR ASSISTANT MEDICAL OFFICER (Permanent Appointment).**—Applications are invited from qualified medical women to act as Senior Assistant Medical Officer of the City Maternity Home, 134, Heathfield Road, Handsworth. This medical officer will attend ante-natal and children's clinics and will relieve the medical officer in charge on alternative nights and week-ends. She should have had previous obstetric experience. The post is non-resident and the salary scale is £500 per annum, rising by £25 annually to £700, plus war bonus, the commencing salary within the scale according to experience. The consent of the Ministry of Health has been given to this appointment, which will be subject to membership of the Birmingham Corporation Superannuation Scheme, to the candidate passing a medical examination and to three months' notice on either side. Applications giving full information as to liability for military service, medical fitness and deferment, and accompanied by copies of three recent testimonials, to be made on a form obtainable from the Medical Officer of Health, Council House, Birmingham 3, and returned to him on or before September 12, 1943.

**ASSISTANT MEDICAL OFFICER (Woman).**—The Public Health Committee invite applications from qualified medical women to attend ante-natal, post-natal and child welfare clinics, war-time nurseries and maternity homes. The salary scale is £500, rising by £25 annually to £700 per annum, plus war bonus, the commencing salary within that scale depending on the medical officer's experience. The consent of the Ministry of Health has been given to this appointment. Applications giving full information as to liability for military service, medical fitness and deferment, and accompanied by copies of three recent testimonials, to be made on a form obtainable from the Medical Officer of Health, Council House, Birmingham, 3, and returned to him on or before September 12, 1943.

**ROYAL ALBERT EDWARD INFIRMARY AND DISPENSARY, Wigan (normally 189 beds).** Appointment of **RESIDENT MEDICAL AND SURGICAL OFFICER (B1).**—Applications are invited from registered medical practitioners for the appointment of Resident Surgical Officer (B1), to become vacant on October 1, 1943. Applicants should have held house appointments and had surgical experience. Preference will be given to candidates holding Diploma of F.R.C.S. Suitably qualified R practitioners holding B2 appointments are invited to apply. Applications from R practitioners now holding B1 appointments cannot be considered unless they have been rejected by the R.A.M.C. Salary is at the rate of £250 per annum, plus war bonus. This post affords an excellent opportunity for improving surgical practice. Applications should be sent to the undersigned as soon as possible.—A. Stanley Brunt, General Superintendent and Secretary.

**SALISBURY GENERAL HOSPITAL.**—Applications are invited for the post of **ASSISTANT PATHOLOGIST**. The Laboratory serves other hospitals, is the Wilts County Laboratory, and is an association unit of the E.P.H.S. The work is very varied; recent bacteriological experience would be helpful. Salary up to £700 p.a., according to experience. The post is a temporary one for the duration, with some possibility of being permanent. Application to the Director, Department of Pathology, General Infirmary, Salisbury, Wilts.

**STOCKTON AND THORNABY HOSPITAL.** Stockton-on-Tees. (135 Beds, 3 Residents).—Applications are invited from registered medical practitioners, male, for appointment as **HOUSE PHYSICIAN alternating CASUALTY OFFICER (A)**, becoming vacant in August, including practitioners within three months of qualification who are liable to service under the National Service Acts. If held by a practitioner who is liable under these Acts, appointment will be for a period of six months. The salary is at the rate of £150 per annum, with full residential emoluments. Applications should be sent to the undersigned.—John Wilkinson, Secretary-Superintendent.

**ROYAL GWENT HOSPITAL, Newport, Mon. (250 beds, plus 130 E.M.S.).**—Applications are invited from registered medical practitioners, male or female, for the appointment of **SENIOR RESIDENT OFFICER (B1)**, to become vacant on September 15, 1943. Applicants should have held house appointments and had surgical experience. Suitably qualified practitioners holding B2 appointments are invited to apply. Applications from R practitioners now holding B1 appointments cannot be considered unless they have been rejected by the R.A.M.C. Salary at the rate of £225 per annum, with full residential emoluments. Applications should be sent at once to the undersigned.—Alan Ruddle, Sec.-Supt.

**KENT AND SUSSEX HOSPITAL (506 beds), Tunbridge Wells.**—Immediate applications are invited from registered medical practitioners for the appointment of a **LOCUM RESIDENT EAR, NOSE, AND THROAT REGISTRAR (B1)**, from September 15 to October 5, 1943. Salary approximately ten guineas per week.—E. A. Wagstaff, Superintendent-Secretary.

#### MIDDLESEX COUNTY COUNCIL.

**RESIDENT ASSISTANT MEDICAL OFFICER (B1) for Orthopaedic Department (Fracture A Dept., E.M.S.)** required at CHASE FARM HOSPITAL, Enfield, Middlesex. Applications invited from registered medical practitioners, including R and W practitioners holding B2 posts, preferably with experience in orthopaedic work. R practitioners holding B1 posts ineligible unless rejected by R.A.M.C. Salary £400 p.a., by £25 to £475, plus war bonus, board, lodging and laundry. Whole-time duties such as Council may require under supervision of Medical Director. Appointment is for four years only, subject to medical examination and one month's notice. Applications, stating age, nationality, qualifications, present post and previous experience, enclosing copies of not more than three recent testimonials, to the undersigned. Application forms not provided. Closing date September 18, 1943.

**RESIDENT JUNIOR ASSISTANT MEDICAL OFFICER (Anaesthetics—B2)** required at WEST MIDDLESEX COUNTY HOSPITAL, Isleworth, Middlesex. Applications invited from registered medical practitioners, including R and W practitioners who now hold A posts. Salary £250 p.a., plus war bonus, board, lodging, and laundry. Whole-time duties such as Council may direct, under supervision of Medical Director. Appointment, subject to medical examination and one month's notice, is for six months, with possibility of extension to 12 months (except in case of R and W practitioners). Post now vacant. Applications, stating age, nationality, qualifications, present post and previous experience, enclosing copies of not more than three recent testimonials, to Medical Director "Z" of hospital. Application forms not provided. Closing date September 11, 1943.

**RESIDENT JUNIOR ASSISTANT MEDICAL OFFICER (B2)** required at NORTH MIDDLESEX COUNTY HOSPITAL, Edmonton, N.18. Applications invited from registered medical practitioners, including R and W practitioners who now hold A posts. Salary £250 p.a., plus war bonus, board, lodging, and laundry. Whole-time duties such as Council may require under supervision of Medical Director will be in Out-patient Department and will include medical, surgical and casualty cases, with minor surgery. Appointment, subject to medical examination and one month's notice is for six months, with possibility of extension to 12 months (except in case of R and W practitioners). Post vacant October 4, 1943. Applications, stating age, nationality, qualifications, present post and previous experience, enclosing copies of not more than three recent testimonials, to Medical Director "Z" of hospital. Application forms not provided. Closing date September 11, 1943.

**NON-RESIDENT SURGEON (B1)** required at CLARE HALL COUNTY SANATORIUM, South Mimms, Middlesex (560 beds). Applicants must be registered medical practitioners with a higher degree or diploma in surgery and some experience in thoracic surgery. Commencing salary between £650 and £1,000 p.a. according to experience. Additional cost-of-living bonus if salary under £850 p.a. A large amount of thoracic surgery is done at sanatorium. Successful applicant would work as assistant with visiting thoracic surgeons, and general scope of his duties would be arranged by Medical Director, but within these limits would have freedom in clinical action. Appointment is whole-time, unestablished, subject to medical examination and three months' notice. Post is non-resident, but surgeon appointed must live near sanatorium. Salary is inclusive; any fees received must be paid to County Council. Applications, stating age, nationality, qualifications, present post and previous experience, enclosing copies of not more than three recent testimonials, to the undersigned. Application forms not provided. Closing date September 18, 1943.—C. W. Radcliffe, "Z," Clerk of the County Council, Middlesex Guildhall, Westminster, S.W.1.

**MIDDLESEX COUNTY COUNCIL.** Middlesex Colony, Certified Institution, Shenley, near St. Albans. Applications are invited from registered medical practitioners, male or female, not liable for war service, for the post of **ASSISTANT MEDICAL OFFICER (B1)**. Salary from £350 per annum (if holding D.P.M. £400 per annum) to £460 per annum, according to qualifications and experience (plus bonus, now £22 2s. per annum), with meals, laundry, and furnished accommodation. The appointment will be in a temporary capacity, and determinable by three months' notice on either side. Applications should reach the undersigned before September 22, 1943, and state earliest date when available for duty. A medical examination may be required.—C. W. Radcliffe, Clerk of the County Council, Guildhall, Westminster, S.W.1.

**CUMBERLAND INFIRMARY, Carlisle (219 beds).**—Applications are invited from registered medical practitioners, including practitioners within three months of qualification who are liable to service under the National Service Acts, for the post of **HOUSE SURGEON (A)**, vacant from October 1 next. If held by a practitioner liable under these Acts appointment will be for a period of six months. Salary is at the rate of £160 per annum, with board, etc. Applications should be sent to the Secretary-Superintendent immediately.

**IMPORTANT—All applicants should read the notice about qualifications required, etc., printed at the top of page 13**

**BODMIN EMERGENCY HOSPITAL.**—Applications are invited from registered medical practitioners, male or female, for the appointment of **RESIDENT HOUSE SURGEON (B2)**, including R and W practitioners who now hold A posts. If held by an R or W practitioner the appointment will be limited to six months; otherwise it will not exceed one year. The salary is at the rate of £200 per annum, with full residential emoluments. Applications should be sent to the Medical Superintendent, Bodmin Emergency Hospital, Bodmin, Cornwall, as soon as possible.

**CAMBORNE-REDRUTH GENERAL HOSPITAL.** Redruth, Cornwall.—Applications are invited from registered medical practitioners, male and female, for the appointment of a **HOUSE SURGEON (A)**, including practitioners within three months of qualification who are liable to service under the National Service Acts. If held by a practitioner who is liable under these Acts appointment will be for a period of six months. Salary is at the rate of £200 per annum, with full residential emoluments.

**DEVIZES AND DISTRICT HOSPITAL,** Wiltshire (101 beds, including E.M.S.).—Applications are invited from registered medical practitioners, male and female, for the appointment of **HOUSE SURGEON (A)**, required immediately, including practitioners within three months of qualification who are liable to service under the National Service Acts. If held by a practitioner who is liable under these Acts appointment will be for a period of six months. Salary is at the rate of £150 per annum, with full residential emoluments. Applications should be sent to the undersigned.—R. E. Maddox, Secretary.

**GRANTHAM HOSPITAL (125 beds).** **JUNIOR RESIDENT MEDICAL OFFICER.**—Applications are invited from registered medical practitioners, male and female, for the appointment of a Junior Resident Medical Officer (A), to become vacant early in September, including practitioners within three months of qualification who are liable to service under the National Service Acts. If held by a practitioner liable under these Acts the appointment will be for a period of six months. The lady or gentleman appointed will be in charge of the fixed first-aid post established at the hospital as well as undertaking duties within the hospital proper. The candidate appointed will also have the medical oversight of patients at the hospital's annexe. Salary is at the rate of £225 per annum, with full residential emoluments. Applications should be addressed to the undersigned at the hospital.—John E. Ray, Secretary-Superintendent, The Hospital, Manthorpe Road, Grantham.

**GRIMSBY AND DISTRICT GENERAL HOSPITAL (237 beds).**—Applications are invited from registered practitioners, male and female, for the appointment of **HOUSE PHYSICIAN (A)**, to become vacant on October 1, 1943, including practitioners within three months of qualification who are liable to service under the National Service Acts. If held by a practitioner who is liable under these Acts, appointment will be for six months. Salary is at the rate of £175 per annum, with full residential emoluments. Applications, giving full particulars, to the Secretary-Superintendent.

**MILLER GENERAL HOSPITAL,** Greenwich High Road, S.E.10.—Applications are invited from registered medical practitioners for the appointment of **SURGICAL REGISTRAR AND DEPUTY RESIDENT SURGICAL OFFICER (B1)**, to become vacant on September 20, 1943. Applicants should have held house appointments and had surgical experience. Suitably qualified R practitioners holding B2 appointments are invited to apply. Applications from R practitioners now holding B1 appointments cannot be considered unless they have been rejected by the R.A.M.C. Salary is at the rate of £350 per annum, with full residential emoluments, subject to appointment by E.M.S. Applications should reach the undersigned not later than September 8, 1943.—E. E. Marks, Secretary.

**WEST LONDON HOSPITAL,** Hammersmith, W.6.—Applications are invited from registered medical practitioners, male and female, for the appointment of **RESIDENT ANAESTHETIST AND AURAL AND OPHTHALMIC HOUSE SURGEON (B2)**, to become vacant on October 1, including R and W practitioners who now hold A posts. The appointment will be for a period of six months. Salary according to experience, but not less than £100 per annum, with the usual residential emoluments. Applications should reach me not later than September 10.—H. A. Madge, Secretary.

## IMPORTANT NOTICE,

### APPOINTMENTS

(a) **British Isles.**—Medical practitioners are requested not to apply for any appointment referred to below without first having communicated with the Secretary to the British Medical Association, B.M.A. House, Tavistock Square, W.C.1 (in the case of Scottish appointments, with the Scottish Secretary, 7, Drumsheugh Gardens, Edinburgh).

### CONTRACT PRACTICE

**ABERTYSWG MEDICAL AID SOCIETY.**—(Medical Officer.)  
**LLWYNPIA, CLYDACH VALE, PEN-Y-GRAIG, GLAMORGAN.**—(Workmen's Medical Scheme.)  
**MID-RHONDDA MEDICAL AID SOCIETY.**—(Assistant Medical Officer.)  
**NEATH AND DISTRICT.**—(Medical Aid Association.)  
**OAKDALE, MON.**—(Medical Officer for Medical Aid Association.)  
**OGMORE VALLEY, GLAMORGAN.**—(Wyndham Colliery Medical Aid Society.) (Workmen's Medical Scheme.)

### PUBLIC ASSISTANCE

**CITY AND COUNTY OF BRISTOL: PUBLIC ASSISTANCE COMMITTEE.**—(District Medical Officer.)  
**COUNTY BOROUGH OF BARROW-IN-FURNESS.**—(District Medical Officer.)  
By Order of the Council.

G. C. ANDERSON,

Secretary.

August 31, 1943.

**BRISTOL CITY AND COUNTY MENTAL HOSPITAL,** Fishponds.—Applications are invited from registered medical practitioners, including R and W practitioners holding B2 appointments, and R practitioners now holding B1 appointments who have been rejected by the R.A.M.C., for the post of **TEMPORARY ASSISTANT MEDICAL OFFICER (B1)**. Salary £525 per annum, rising to £600 by annual increases of £25, with full residential emoluments and with excellent facilities and opportunity for study and research. Applications to be addressed to the Acting Medical Superintendent, Bristol Mental Hospital, Fishponds, Bristol.

**ROYAL NATIONAL ORTHOPAEDIC HOSPITAL,** 234, Great Portland Street, W.1.—Applications are invited for the post of **PART-TIME SURGICAL REGISTRAR** for duties in the Out-patient Department. Applicants should be Fellows of the Royal College of Surgeons. Applications should reach the Secretary, from whom further particulars can be obtained, not later than Sept. 9.

**SWANSEA GENERAL AND EYE HOSPITAL.**—Applications are invited from registered medical practitioners, male and female, for the appointment of a **HOUSE SURGEON (A)**, vacant middle September, including practitioners within three months of qualification who are liable to service under the National Service Acts. If held by a practitioner who is liable under these Acts appointment will be for a period of six months. Salary is at the rate of £150 per annum, with full residential emoluments. Applications should be forwarded to the undersigned.—O. C. Howells, Sec.-Superintendent.

**THE SHEFFIELD RADIIUM CENTRE,** at the Royal Infirmary, Sheffield, 6.—Applications are invited from registered medical practitioners, male or female, for the appointment of a full-time **ASSISTANT MEDICAL OFFICER (B1)** at the Sheffield Radium Centre. Suitably qualified R and W practitioners who now hold B2 posts are invited to apply. Applications from R practitioners now holding B1 posts cannot be considered unless they have been rejected by the R.A.M.C. The salary will be from £400 to £600 per year, according to the qualifications and experience of the selected candidate, rising to £750 by annual increments of £50, plus a war bonus of £48 2s. per year, and participation in the Centre's Superannuation Scheme. Previous experience in radiotherapy is not essential. Applications to be sent to Capt. T. W. Barnard, O.B.E., Secretary.

**VICTORIA HOSPITAL FOR SICK CHILDREN,** Hull.—The Board of the above hospital requires a **RESIDENT HOUSE SURGEON (lady) (A post)**, at a salary of £200 per annum, with board, residence, and laundry. Practitioners within three months of qualification who are liable to service under the National Service Acts may apply, when appointment will be for a period of six months. Applications to be sent to the Secretary as soon as possible.

**HAMPSTEAD GENERAL HOSPITAL,** Haverstock Hill, N.W.3.—Applications are invited from single medical men or women for the post of **CASUALTY MEDICAL OFFICER (B2)** at the Out-patient Department, Camden Town, N.W.1, now vacant. Salary £100 per annum (tenable for six months), plus an allowance of £50 per annum for duties in connexion with the First Aid Post established there. R and W practitioners who now hold A posts may apply. Applications, with copies of three testimonials, should be sent at once to Kenneth A. F. Miles, House Governor.

**LONGTON HOSPITAL,** Stoke-on-Trent (56 beds).—Applications are invited from registered medical practitioners for the appointment of a **HOUSE SURGEON (A)**. Salary is at the rate of £200 and £25 bonus for each completed six months' service, with full residential emoluments. Practitioners within three months of qualification and liable under the National Service Acts may also apply, when appointment will be for six months. Applications should be sent to W. J. Hollinson, Secretary.

**ROYAL SHEFFIELD INFIRMARY AND HOSPITAL,** The Royal Infirmary, Sheffield.—Applications are invited from registered medical practitioners, male and female, for the appointment of **RESIDENT MEDICAL OFFICER** at our Annexe, the Firbeck Hall Auxiliary Hospital, tenable in the first instance for six months (B1 appointment). Applicants should have held house appointments and had surgical experience. Preference will be given to candidates holding Diploma of F.R.C.S. R and W practitioners holding B2 posts may also apply. Applications from R practitioners now holding B1 posts cannot be considered unless they have been rejected by the R.A.M.C. Salary £200 per annum, or according to experience. Applications to be sent forthwith to H. Kingsley Pearce, General Superintendent and Secretary, The Royal Infirmary, Sheffield, 6.

**THE ROYAL EYE AND EAR HOSPITAL,** Bradford (100 beds).—Applications are invited from registered medical practitioners, male or female, for the appointment of **HOUSE SURGEON (B2)**, including R and W practitioners who now hold A posts. The appointment will be for a period of six months at a salary at the rate of £180 per annum, with full residential emoluments. Applications should be sent to the undersigned.—Ernest S. Heap, Secretary-Superintendent, Royal Eye and Ear Hospital, Bradford.

**VICTORIA HOSPITAL,** Burnley (169 beds).—Applications are invited from registered medical practitioners, male or female, for the appointment of a **HOUSE SURGEON (A)**, to become vacant on September 10, 1943, including practitioners within three months of qualification and liable under the National Service Acts, when appointment will be for a period of six months; otherwise it may be extended. Salary at the rate of £150 per annum, with full residential emoluments. Applications should be sent to the undersigned immediately.—J. E. Wheatcroft, Secretary.

**WEST KENT GENERAL HOSPITAL (Incorporated),** Maidstone. (135—250 E.M.S.—Beds).—**CASUALTY OFFICER (B2).**—Applications are invited from registered medical practitioners, male and female, for the appointment of Casualty Officer (B2), to become vacant on September 25, 1943, including R and W practitioners who now hold A posts. The appointment will be limited to six months. Salary at the rate of £200 per annum, with full residential emoluments. Applications, giving details as to age, nationality, qualifications, etc., should reach the undersigned forthwith.—Edward J. Gregg, House Governor and Secretary.

**WEST NORFOLK AND KING'S LYNN GENERAL HOSPITAL,** King's Lynn. **RESIDENT HOUSE PHYSICIAN (A).**—Applications are invited from registered medical practitioners, male and female, for the appointment of a House Physician (A), to become vacant on September 12, 1943, including practitioners within three months of qualification who are liable to service under the National Service Acts. The appointment will be for a period of six months. Salary is at the rate of £150 per annum, with full residential emoluments. The appointed applicant will have charge of medical and ophthalmic beds and act as Resident Anaesthetist. Applications, stating age, nationality, qualifications, and accompanied by three recent testimonials, should reach the undersigned as soon as possible.—Joseph E. Searjeant, F.C.C.S., House Governor and Secretary.

# THE Medical Defence Union

Established  
1885

Annual Subscription £1

MEMBERSHIP EXCEEDS 26,000

MUSEum  
1337

Assets exceed £100,000

Protection is essential for every practitioner engaged in any form of practice.

Full particulars from the Secretary (Dr. ROBERT FORBES), The Medical Defence Union, Ltd., 49, Bedford Sq., London, W.C.1

## CHARGES FOR CLASSIFIED ADVERTISEMENTS

Circulation 47,000.

To economize in paper and to avoid expense in booking, postage and collection, **all advertisements must be paid for at time of order.** Publication will be in the earliest possible issue. Delays are unavoidable in present circumstances.

**To Members of the Association,** the charge for advertisements of Assistants, Locums, Partnerships and Practices is 7/6 for 20 words plus 2/6 if a box number is used. Extra words 2/6 for 5 (or less). Adverts. should be clearly marked "**Member.**"

**Personal, Public Appointments, and Notices.**—Minimum charge 16/—, which covers up to 20 words. Additional words 4/- for 5 or less.

**Educational, Hospitals and Homes.**—2/6 a line. Minimum charge 15/-.

**Assistances, Locums, Medical Posts, Partnerships, Practices, Dispensers, Typing, Duplicating, Houses, Consulting Rooms, Miscellaneous,** minimum charge 10/-, which covers up to 20 words. Additional words 2/6 every 5 or less. If a Box Number is used (instead of name and address), 2/6 extra per insertion.

† Name and address of owner and of the firm negotiating the sale must accompany advertisement. These details are not for publication.

**Births, Marriages, and Deaths.**—The charge for announcements under this head is 10/6. This amount should be forwarded with the notice, authenticated by name and address of sender.

**Box No. replies** should be addressed separately to each No. care of this Office. They are forwarded to the advertiser under plain cover. In no circumstances can the name and address of Box No. Advertiser be divulged.

*Every effort is made to ensure the accuracy of advertisements appearing in the Journal. No recommendation is implied by acceptance, and the British Medical Association reserves the right to refuse or interrupt the insertion of any advertisement.*

Advertisement Manager, British Medical Journal, B.M.A. House, Tavistock Square, London, W.C.1. Telephone: EUSton 2111.

## PUBLIC APPOINTMENTS

M.B., B.S.(Lond.) would do part-time duties as **FACTORY MEDICAL OFFICER**, Wembley, Perivale, Greenford, and Ealing districts.—Box 1561, B.M.J.

**OVERSEAS EMPLOYMENT.**—A **GENERAL SURGICAL SPECIALIST** is required by the Government of Iraq for a period of one year in the first instance. Salary: Iraq Dinars 120 per month, plus high cost-of-living allowance at the rate of Iraq Dinars 12 a month. (I.D.I.=£1). Free first-class passages and liberal leave on full salary. The appointment is not pensionable, but there is a Provident Fund. Consultant practice is allowed. Candidates must be experienced in operative work and must hold a Specialist's Diploma in their branch of work, such as F.R.C.S., M.R.C.O.G., or D.L.O. Duties may include teaching of surgery in the Royal College of Medicine, Bagdad. Written applications, giving full particulars of age, qualifications, and experience, should be sent to the Secretary, Overseas Manpower Committee (Ref. 1051), Ministry of Labour and National Service, Alexandra House, Kingsway, London, W.C.2.

**UNIVERSITY OF DURHAM.** King's College, Newcastle-upon-Tyne. The Public Health Laboratory.—Applications are invited from registered medical practitioners or science graduates of either sex for the post of **ASSISTANT BACTERIOLOGIST** in the Public Health Laboratory. Some previous experience in laboratory work is desirable. The appointment is a war emergency one and not open to candidates who can be called up for military service. The salary will vary according to the qualifications and experience of the candidates. Applications, accompanied by the names of not more than three referees, should be submitted by Friday, September 17, to the undersigned, from whom further particulars may be obtained.—G. R. Hanson, Registrar, King's College.

## NOTICES

**APPLICANTS ARE ADVISED** not to send original testimonials when replying to advertisements, copies will answer the purpose quite as well, and in the event of their being lost or mislaid no inconvenience will ensue.

**MEDICAL AND DENTAL PRACTITIONERS** in the U.S.A. and Canadian Forces in this country who are interested in postgraduate study should communicate with the Secretary, American Postgraduate Medical Association, 62, Queen Anne Street, London, W.1.

## PERSONAL

**RADIUM.** You can hire up to 100 mgms. to any specification for £5 5s. for one week from J. C. Gilbert, Ltd., Columbia House, Aldwych, W.C.2. Phone: Chancery 6060.

## EDUCATIONAL

**A FURTHER WEEK-END COURSE** for doctors interested in Health in the Factory will be held at the London School of Hygiene and Tropical Medicine on Saturday and Sunday, October 2 and 3, 1943. Details of the programme and application forms may be obtained from the Secretary of the School, Keppel Street, Gower Street, W.C.1. The fee is £1 ls., with an additional 2s. 6d. if lunch is desired on Sunday.

**F.R.C.S.(EDIN.)**, Postal and Oral Courses continued as usual. Full details.—H. C. Orrin, F.R.C.S., Surgeon's Hall, Edinburgh.

**L.M.S.S.A. FINAL EXAMINATIONS:** Surgery, Oct. 11, Nov. 8, Dec. 6; Medicine, Pathology, Oct. 18; Nov. 15, Dec. 13; Midwifery, Oct. 19, Nov. 16, Dec. 14. For particulars apply Registrar, Apothecaries Hall, Black Friars Lane, London, E.C.4.

**POST GRADUATE STUDY.** Diploma in Anaesthetics; Diploma in Psychological Medicine; Diploma in Ophthalmology; Diploma in Radiology; Diploma in Laryngology; Diploma in Child Health. F.R.C.S.Eng., and all Surgical Examinations: M.R.C.P.Lond., and all Medical Examinations: M.D. Thesis of all Universities. No interruption of courses during the war. Complete Guide to Medical Examinations sent free on application. Applicants should state in which qualification they are interested. Address: Secretary, Medical Correspondence College, 19, Welbeck St., London, W.1.

**POSTAL COACHING** for all Medical Examinations. Some successes from 1901-42: M.D.(Lond.), 435; M.B., B.S.(Lond.), final, 380; F.R.C.S.(Eng.), primary, 318; F.R.C.S.(Eng.), final, 254; M.R.C.P.(Lond.), 352; M.R.C.S., L.R.C.P., final, 782; D.A. (1936-42), 50; F.R.C.S.(Edin.) and D.R.C.O.G., many successes. Assistance with M.D. theses. Special arrangements for medical officers with Forces. Medical Prospectus (24 pp.) gratis, along with list of Tutors, etc., on application to the Principal.—University Examination Postal Institution, 17, Red Lion Square, London, W.C.1. Phone: Holborn 6313.

**THE POLYTECHNIC**, Regent Street, London, W.1. Department of Chemistry and Biology, Head of Department: H. Lambourne, M.A., M.Sc., F.I.C.—Session 1943-44 will commence on September 13. There will be full-time day courses for the following examinations: 1st M.B., Pre-medical, Intermediate (Pharmaceutical Society). Evening classes for these examinations will be held from September 20, if there is sufficient demand. Full particulars of the courses, fees, etc., may be obtained from the Director of Education, the Polytechnic, Regent Street, W.1.

**ROYAL COLLEGE OF PHYSICIANS OF EDINBURGH.** **ROYAL COLLEGE OF SURGEONS OF EDINBURGH.** **ROYAL FACULTY OF PHYSICIANS AND SURGEONS OF GLASGOW.**—Copies of Regulations for the Triple Qualification (L.R.C.P.Ed., L.R.C.E.Ed., and L.R.F.P. & S.G.) and the Diploma in Public Health, containing dates of professional examinations for the year 1943-44. Curriculum, etc., may be had on application to the Registrar, Surgeons' Hall, 18, Nicolson Street, Edinburgh, 8, or to the Registrar, 242, St. Vincent Street, Glasgow, C.2.

**THE BEDFORD PHYSICAL TRAINING COLLEGE**, 37, Lansdowne Road, Bedford. Principal, Miss Stansfeld, O.B.E.; Vice-Principal, Miss Petit. Students are trained to become teachers in Gymnastics and Games, and the training, which extends over three years, includes Educational and Medical Gymnastics, Massage, Games, Dancing, and Swimming. Fees: £165 per annum. Two scholarships of £50 and two of £25 are offered annually.—For particulars apply Secretary.

**UNIVERSITY OF DURHAM.** The Medical School, King's College, Newcastle-upon-Tyne.—Applications are invited for the position of **TEMPORARY DEMONSTRATOR** in the Department of ANATOMY. Salary £300 to £350 per annum, according to experience and qualifications. Applications, together with the names of three persons to whom reference may be made, should be sent to the undersigned not later than September 11.

Applications are invited for the position of **TEMPORARY DEMONSTRATOR** in the Department of PHYSIOLOGY. Salary £300 to £350 per annum, according to experience and qualifications. Applications, together with the names of three persons to whom reference may be made, should be sent to the undersigned not later than September 11.—G. R. Hanson, Registrar, King's College.

**UNIVERSITY COLLEGE RADIOTHERAPY DEPARTMENT.**—Applications are invited for an **ASSISTANT** in the Department of Radiotherapy. The appointment is part-time at a salary of £300 per annum, non-resident. The duties in connexion with this appointment may be obtained on application to the Secretary. Applications, with qualifications and copies of three testimonials, to the Secretary, University College Hospital, Gower Street, W.C.1, not later than Monday, September 27.

**THE UNIVERSITY OF BIRMINGHAM. CHAIR OF SOCIAL MEDICINE.**—The Council invites applications for the newly established Chair of Social Medicine. The appointment will carry an initial salary of £1,500 per annum, but it is hoped that this will subsequently be increased to £2,000 per annum. The successful applicant will be expected to commence his duties as soon as possible after the appointment has been made. Further particulars of the appointment may be obtained from the undersigned, to whom applications (twelve copies) must be submitted, with the names of three referees, on or before March 1, 1944.—C. G. Burton, Secretary, The University, Edmund Street, Birmingham, 3.

## ASSISTANTSHIPS

**WANTED**, permanent position or **ASSISTANTSHIP WITH VIEW**, country town or rural, Englishman, aged 36, nine years' experience, free October 1.—Box 1733, B.M.J.

**WANTED**, **INDOOR ASSISTANT**, male, West Riding, salary £500 per annum, all found, car supplied, no night work, little midwifery.—Box 1805, B.M.J.

**WANTED**, **Outdoor ASSISTANT**, either sex, for partnership in Hertfordshire country town, salary £650 per annum, car and running expenses provided.—Write, full details, stating nationality, etc. Box 1559, B.M.J.

**WANTED**, **ASSISTANT**, town and country practice, West Cornwall, assistant to find own accommodation and car, salary by arrangement.—Box 1603, B.M.J.

**WANTED**, **ASSISTANT** or Duration Locum, must be married, British, and ineligible, good salary.—Write, stating age, experience, etc., Box 1328, B.M.J.

**WANTED IMMEDIATELY**, **Indoor and Outdoor ASSISTANTS**, also Duration Locums for town and country practices, with and without view partnership, good salaries offered.—State full particulars, Brit. Medical Bureau, 33, Cross Street, Manchester, 2.

**WANTED ASSISTANT**, male, outdoor, pleasant country practice in Essex, work light, accommodation available, must be able to drive car, state age, salary by argt.—Box 1727, B.M.J.

**WANTED**, **ASSISTANT**, exempt, busy private and panel practice, West Riding, dispenser kept, salary by arrangement, little night work and midwifery.—Box 1718, B.M.J.

**WANTED**, **ASSISTANT (indoor)**, man or woman, in country practice in Devon, very little night work, car provided.—Box 1723, B.M.J.

**WANTED**, **ASSISTANT**, male or female, Staffs, £500 p.a., indoor, car provided, work light, outdoor if preferred.—Box 1707, B.M.J.

**WANTED**, **ASSISTANT** for duration, in North Country, large panel and private practice, candidate must be energetic, state salary, age, experience.—Box 1714, B.M.J.

**WANTED**, **ASSISTANT** in two-partner country practice in Surrey, with or without view, small furnished house available.—Box 1706, B.M.J.

**WANTED**, at once, for General Practice, Frome, Somerset, **ASSISTANT (woman preferred)** for duration, or one year or shorter fixed period.—Apply, stating full particulars, to F.alkner, Argyll House, Frome, Somerset.

**EXPERIENCED ASSISTANT** for Lancashire town practice, unfurnished house, good salary, allowances and prospects to suitable man, good type of practice, references required.—Box 1710, B.M.J.

**ASSISTANT**, male, outdoor, **REQUIRED** at end of September for practice in a country town in Southern Scotland, salary by arrangement.—Box 1713, B.M.J.

**ASSISTANT WANTED** immediately for duration to replace third partner in Somerset country town practice, dispenser kept, salary £700.—Box 1731, B.M.J.

**ASSISTANT REQUIRED** in county town, reception area, light work, no midwifery, car provided, salary by arrangement.—Box 1730, B.M.J.

**ASSISTANT** duration, **WANTED** to take place third partner in R.A.F.V.R., chiefly residential practice, 40 miles north of London, £650 a year, £50 car allowance and small furnished house rent free, dispenser kept.—Box 1726, B.M.J.

**GRADUATE**, British, 29, married, exempt, desires **ASSISTANTSHIP**, with house available, experienced hospital and general practice, own car.—Box 1719, B.M.J.

**GENERAL PRACTITIONER**, Scot. male, married ex-R.A.M.C., seeks ASSISTANTSHIP with definite view partnership or succession, own car, no midwifery.—Box 1354, B.M.J.

**LIVERPOOL**, wanted by Irish Jewish doctor, pleasant Liverpool suburb, an ASSISTANT, either sex, indoor, comfortable home, small panel, car supplied, view partnership, excellent prospects, state fullest particulars, confidential.—Box 1551, B.M.J.

**OPHTHALMIC ASSISTANT**, west country, applicants should be British, ineligible, and experienced, full particulars.—Box 1735, B.M.J.

**OUTDOOR OR PART-TIME ASSISTANT** WANTED, duration, for woman doctor's general practice, North London, hospital experience essential, start October 1.—Box 1729, B.M.J.

**REQUIRED**, indoor ASSISTANT for 6 months, commencing October, in three-partner practice near Nottingham, car provided, salary by arrangement.—Box 1721, B.M.J.

### LOCUMS

**WANTED LOCUM OR ASSISTANT** for Partner on active service, house, car, etc., provided, pleasant town Warwickshire, liberal terms to suitable man or woman.—Box 1732, B.M.J.

**WANTED** to take over immediately LOCUM for sole share of deceased doctor's panel and private practice, pleasant Manchester suburb, substantial house, and nice gardens, car and accommodation provided, but for doctor only.—Box 1803, B.M.J.

**WANTED**, LOCUM for one week, September or beginning of October, 14 guineas per week.—Seton, 7, Croxdale Terrace, Pelaw, Gateshead, 10.

**WANTED**, LOCUM for three weeks from September 18, 12 guineas weekly, all found, car provided, work not heavy.—Box 1567, B.M.J.

**WANTED**, urgently, duration LOCUM, very good mixed general practice, pleasant S. Manchester suburb, £500 to £600, all found, car provided appt. £75, prob. transferable.—Box 1555, B.M.J.

**WANTED**, better-class non-dispensing L.T. in Stroud-Gloucester area, September, by experienced physician.—Box 1363, B.M.J.

**WANTED**, LOCUM to help in work of practice from September 10 for one month, whole-time or part-time. State full particulars, 153, London Road, Kingston-on-Thames.

**DURATION LOCUM**, experienced Scottish graduate, aged 41, would undertake charge in town, Scotland, North England, Midlands, good panel necessary.—Box 1712, B.M.J.

**DURATION LOCUM** required immediately for easily managed practice, male preferred, car provided, dispenser kept.—Dr. Stone, 144, Clifton Road, Darlington.

**DURATION LOCUM**, British, either sex, required in rural practice in the North of England, car driver essential.—Box 1615, B.M.J.

**NON-EUROPEAN** British subject, male, single, ineligible, capable, requires duration LOCUM or ASSISTANTSHIP, conscientious worker, good references.—Box 1606, B.M.J.

**LOCUM WANTED** from mid-September to mid-October for private and panel practice on outskirts of Bristol, car provided.—Box 1802, B.M.J.

**MEDICAL WOMAN**, with experience in Obstetrics, required for 3 weeks in September as SENIOR RESIDENT at Maternity Hospital for the Wives of Officers, Fulmer Chase, Bucks, £10 10s. per week.—Write Hon. Secretary, 60, Portland Place, W.1.

### MEDICAL POSTS

**M.D.**, M.R.C.P., aged 32, requires active MEDICAL POST with good salary, and accommodation for self and wife, extensive general and specialist hospital experience, no panel or chronics, British, exempt.—Box 1702, B.M.J.

**OPHTHALMIC**, 9 years, own consulting practice, English, 43, available for APPOINTMENT or HELP colleague, England or Colonies, part-time suitable, house ?, confidential.—Box 1801, B.M.J.

**POST-GRADUATE** student, G.P. experience, seeks PART-TIME WORK in London, please state particulars.—Box 1722, B.M.J.

**PART-TIME WORK WANTED** in London area by Scottish M.D., experienced in general practice and administrative, industrial and insurance work.—Box 1804, B.M.J.

### PARTNERSHIPS

**WANTED**, PARTNER, 1/2 or 1/3 share, with succession later, in compact practice, chiefly club, colliery, and appointments, near Leeds, hitherto worked single-handed.—Box 1613, B.M.J.

**KEEN MALE PARTNER**, under 35, married, required for practice, rural North England, hunting, golf, schools, furnished house available, scope specialization, preliminary interview could be arranged in Ireland if required.—Box 1612, B.M.J.

**PARTNERSHIP** in well-established practice in Glasgow available, share £1,000.—Apply, with full particulars of age, experience, etc., to Messrs. Crawford, Herron and Cameron, Solicitors, 257, West George Street, Glasgow, C2.

### PRACTICES

**WANTED**, PRACTICE or PARTNERSHIP, by experienced practitioner, married, British, small capital, balance payable out of income.—Box 1708, B.M.J.

**WANTED**, PRACTICE or PARTNERSHIP, following short assistantship in industrial area, by experienced practitioner, British, married.—Box 1703, B.M.J.

**COUNTRY PRACTICE**, Northumberland, for sale, £2,000 per annum, small modern house, excellent fittings, shooting, swimming-pool in garden, premium house rent £85, premium £3,500.—Box 1602, B.M.J.

**DEATH VACANCY**, SHEFFIELD, working-class practice, average receipts past three years £1,943, panel patients 2,115.—Details apply Reynolds and Branson, Ltd., Medical Agency, Leeds.

**EDINBURGH**, PRACTICE for sale, receipts approximately £700, including panel of 600, capable of considerable increase, suitable house to let.—Apply, British Medical Bureau, Scottish Branch, 21, Alva Street, Edinburgh.

**FOR SALE**—In prosperous West Kent town, vendor on staff of hospital is disposing of insured portion of his PRACTICE, approximately 960 panel, excellent opening for keen practitioner, either sex.—Box 1480, B.M.J.

**OLD-ESTABLISHED PRACTICE** for sale, West Midlands, excellent prospects, either sex, favourable terms, house for sale or on rental.—Apply, "West Midlands," c/o Philip Harris, 144, Edmund Street, Birmingham.

**FOR SALE**, country PRACTICE, Shropshire, eight miles from Shrewsbury, well established, panel and private, last three years' average £2,191, good house, garage, and garden, preferably sold with practice, possession by arrangement.—Box 1704, B.M.J.

**FOR SALE**, old-established country PRACTICE in delightful country, private and panel patients, fishing, shooting, and golf.—Box 1601, B.M.J.

**MEDICAL PRACTICE** with large panel, wanted in Leeds and district.—Full particulars to Box 1576, B.M.J.

**MEDICAL PRACTICE OR PARTNERSHIP** WANTED, any district considered, south side of Manchester preferred, good panel preferred.—Full details to Box 1734, B.M.J.

**MIDLANDS**, WANTED moderate-sized private and panel PRACTICE, Leicestershire, Notts., or neighbouring areas preferred, details practice and house.—Box 1728, B.M.J.

**PORTRUSH, COUNTY ANTRIM**—Offers will be received by the under-mentioned Solicitors for the sale of the extensive surgical, general and panel PRACTICE of the late Doctor J. C. Mant Martin, carried on at Portrush, County Antrim. Panel 600 to 700. The purchaser will also have the option of purchasing the MEDICAL EQUIPMENT and the HOUSE, "Duncreggan," Portrush.—Crookshank, Leech and Babington, Solicitors, Coleraine, Co. Londonderry.

**SALE**, mixed PRACTICE, 50 miles N. London, panel 1,500, appts. £95, receipts (1943) £1,480, house (rent) £80, schools, nearest £1,650.—Box 1705, B.M.J.

**SMALL PRACTICE** or Assistantship view early succession desired in town Southern England, opportunities hospital and ample scope midwifery, advertiser married, full particulars, highly experienced.—Box 1724, B.M.J.

**WEST MIDLANDS**, one of the oldest established PRIVATE MENTAL HOSPITALS in the country to be sold as a going concern.—Full particulars, Box 1711, B.M.J.

### DISPENSERS, SECRETARIES, RECEPTIONISTS, CHAUFFEURS, &c.

*None of the vacancies for women advertised in these columns relates to a woman between 18 and 41 unless such a woman (a) has living with her a child of hers under the age of 14, or (b) is registered under the Blind Persons Acts, or (c) has a Ministry of Labour permit to allow her to obtain employment by individual effort.*

**WANTED DISPENSER** for country practice.—Apply, Dr. Gallimore, Yeald House, Overton, Hants.

**DISPENSER-BOOKKEEPER** WANTED for practice of five doctors, two kept.—Dr. L. West, 56, High Street, Hoddesdon, Herts.

**DISPENSER-SECRETARY** required by doctor in Coventry.—Box 1720, B.M.J.

**DISPENSER-BOOKKEEPER** requires post, temporary or permanent, end of September, experienced also in shorthand, typing, and driving car.—Box 1717, B.M.J.

**DOCTOR'S WIDOW**, 38, vast experience general practice, intelligent, tactful, good appearance and personality, knowledge bookkeeping, shorthand, and typewriting, reception, etc., seeks POST.—Box 1806, B.M.J.

**LADY** desires post as SECRETARY or RECEPTIONIST, fully experienced, in doctor's house, surgery and books, holds driving licence.—Box 1725, B.M.J.

**RECEPTIONIST POST** desired by business lady, 46, simple bookkeeping.—Miss Grant, 80, High Street, Harpenden, Herts.

**TRAINED NURSE**, doctor's daughter, desires post as NURSE-RECEPTIONIST, full time, willing to improve knowledge of book-keeping and dispensing, London preferable.—Box 1736, B.M.J.

**REPRESENTATIVE** (either sex) required, to call on doctors, hospitals and chemists in Scotland, preferably a native, not liable for military service, no selling, knowledge of physiology and/or biochemistry necessary, salary according to qualifications.—Send full details of education, career, etc., to Home Sales Manager, Organon Laboratories, Ltd., Brettenham House, W.C.2.

### MISCELLANEOUS

**GASTROSCOPE and TABLE** for sale, details.—Box 1709, B.M.J.

**KORITSKA MICROSCOPE**, almost new, 1/6, 1/3, 1/12, 3 eyepieces, 1 with micrometer scale, triple nosepiece, condenser, moving stage, exchange good miniature camera or U.V. lamp.—Box 1716, B.M.J.

**MICROSCOPE, DISARTICULATED SKULL**, half skeleton, for sale, inspection and offers invited, make appointment with Dr. Keith, Deptford Town Hall, S.E.14.

**MACLEAN'S REVALENTA**, made from finest lentil and barley flour, enjoys a "healthy" reputation extending over half a century, a favourite with children and invalids, easily digested and highly nutritious, in tins, priced 2s. and 4s. each, trial sample on request.—Raines, Clark and Co. Ltd., Proprietors and Manufacturers, Edinburgh. London Agents: Butler and Crispe; May Roberts and Co.

**MICROSCOPE** in good condition required by medical student, good price given.—Reply giving particulars to Sparke, Tanyard House, Ninfeld, Battle, Sussex.

The fact that goods made of raw materials in short supply owing to war conditions are advertised in this Journal should not be taken as an indication that they are necessarily available for export.

**MEDICAL PHOTOGRAPHS** and Drawings for illustration, records, etc.—Write for particulars.—Eric O. Sonntag, 159, Bickenhall Mansions, Baker Street, London, W.1. WELbeck 8860.

**MICHEL'S SUTURE CLIPS**, all sizes, BCM/MICH on wrappers, trade enquiries to the manufacturers, A. E. Andrews and Co., 101, Pancras Road, N.W.1.

**REQUIRED**, used X-RAY FILMS for reclaiming in accordance with Ministry of Supply requirements, good prices paid for all quantities exceeding 10 lb.—Send to Morol, Ltd., 21, Woodthorpe Road, Ashford Middlesex. Larger quantities collection arranged.

**£500 PAID** for any 1939 AUSTIN, long-chassis, coachwork unimportant, earlier model or make considered if low mileage.—Write Mobile Units (Ambulance Conversions Dept.), Ripley, Surrey.

### HOUSES, CONSULTING ROOMS

**21, WIMPOLE STREET, W.1., RECONDITIONED** for immediate professional occupation from 3 guineas.—Apply, Sister-in-Charge.

### NURSES

**WANTED**, male and female ATTENDANT for young male schizophrenic, good remuneration and very good accommodation.—Apply Dr. Mann, 3, Little Heath, Charlton E.7, stating experience and qualifications.

### SANATORIA and HOMES

#### RUTHIN CASTLE, NORTH WALES

A Private Clinic, the first in Great Britain, for investigation and treatment of all forms of disease, except mental and infectious. There is a steel and concrete Air Raid Shelter with lift to all floors. Inclusive Charges. Apply Secretary. Tel.: Ruthin 66

**TYKEFORD ABBEY, NEWPORT PAGNELL, Bucks**  
A country Nursing Home for FUNCTIONAL NERVOUS DISORDERS, MEDICAL and CONVALESCENT CASES. Fees from £5 5s. per week inclusive.  
Apply: Dr. D. E. M. DOUGLAS-MORRIS. Telephone: Newport Pagnell 121.

### THE COTSWOLD SANATORIUM

On the Cotswold Hills seven miles from Cheltenham, Stroud and Gloucester. Fully equipped for the treatment of all forms of TUBERCULOSIS. Terms 5s. to 9s. guineas per week inclusive. Full particulars from the MEDICAL SUPERINTENDENT, Cotswold Sanatorium, Cranham, Gloucester. Telephone: Witcombe 81. Telegrams: Hoffman, Birdlip.



### ST. ANDREW'S HOSPITAL, NORTHAMPTON

#### For Nervous and Mental Disorders

**President:** THE MOST HON. THE MARQUESS OF EXETER, K.G., C.M.G., A.D.C. **Medical Sup.:** THOMAS TENNENT, M.D., F.R.C.P., D.P.H., D.P.M. This Registered Hospital is situated in 130 acres of park and pleasure grounds. Voluntary patients who are suffering from incipient mental disorders or who wish to prevent recurrent attacks of mental trouble; temporary patients and certified patients of both sexes are received for treatment. Careful clinical, biochemical, bacteriological, and pathological examinations. Private rooms with special nurses, male or female, in Hospital or in one of the numerous villas in grounds of the various branches can be provided.

**WANTAGE HOUSE**—This is a Reception Hospital in detached grounds with a separate entrance to which patients can be admitted. It is equipped with all the apparatus for the complete investigation and treatment of Mental and Nervous Disorders by the most modern methods; insulin treatment is available for suitable cases. It contains special departments for hydrotherapy by various methods, including Turkish and Russian baths, the prolonged immersion bath, Vichy Douche, Scotch Douche, Electrical baths, Plombières treatment, etc. There is an Operating Theatre, a Dental Surgery, an X-ray Room, an Ultra-Violet Apparatus, and a Department for Diathermy and High-frequency Treatment. It also contains Laboratories for biochemical, bacteriological, and pathological research. Psychotherapeutic treatment is employed when indicated.

**MOULTON PARK**—Two miles from the main Hospital there are several branch establishments and villas situated in a park and farm of 650 acres. Milk, meat, fruit, and vegetables are supplied to the Hospital from the farm, gardens, and orchards of Moulton Park. Occupational therapy is a feature of this branch, and patients are given every facility for occupying themselves in farming, gardening, and fruit-rowing.

**BRYN-Y-NEUADD HALL**—The seaside house of St. Andrew's Hospital is beautifully situated in a park of 330 acres at Llanfairfechan amidst the finest scenery in North Wales. On the North-West side of the Estate a mile of sea-coast forms the boundary. Patients may visit this branch for a short seaside change or for longer periods. The Hospital has its own private bathing house on the seashore. There is trout-fishing in the park.

At all the branches of the Hospital there are cricket grounds, football and hockey grounds, lawn tennis courts (grass and hard courts), croquet grounds, golf courses, and bowling greens. Ladies and gentlemen have their own garden, and facilities are provided for handicrafts such as carpentry, etc. For terms and further particulars apply to the MEDICAL SUPERINTENDENT (Telephone Nos. 2356 and 2357 Northampton), who can be seen in London by appointment.

### THE COPPICE, NOTTINGHAM

#### Hospital for Mental Diseases

This Institution is exclusively for the reception of a limited number of Private Patients of both sexes of the Upper and Middle Classes at moderate rates of payment. It is beautifully situated in its own grounds on an eminence a short distance from Nottingham, and from its singularly healthy position and comfortable arrangements affords every facility for the relief and cure of those mentally afflicted. Occupational Therapy, Voluntary and Temporary Patients received. Tel.: 64117.

For terms, etc., apply to the Medical Superintendent.

### CHISWICK HOUSE, PINNER, MIDDLESEX

Telephone: PINNER 234.

A private Hospital for the Treatment and Care of Mental and Nervous Illnesses in both sexes. A modern country house, 12 miles from Marble Arch, in attractive and secluded grounds. Fees from 10 guineas per week inclusive. Cases under Certificate. Voluntary and Temporary patients received for treatment. DOUGLAS MACAULAY, M.D., D.P.M.

### WONFORD HOUSE, EXETER, DEVON

#### For Nervous and Mental Disorders

A registered hospital for the TREATMENT of PRIVATE PATIENTS of both sexes of the upper and middle classes. Modern forms of treatment. Voluntary, temporary, and certified patients received. Moderate terms. For further information apply to the Medical Superintendent. Telephone: Exeter 2642.

### CITY OF LONDON MENTAL HOSPITAL, DARTFORD, KENT

Ladies and Gentlemen received for treatment under certificates and without certification as either VOLUNTARY or TEMPORARY PATIENTS at a weekly fee of £2 9s. 0d. and upwards.

### HEIGHAM HALL, NORWICH

PRIVATE MENTAL HOME for Nervous and Mental Illness. All types of treatment available. Fees from 4 gns. per week upwards, according to requirements. Vacancies occasionally exist at reduced fees on the recommendation of the patient's own physician. Apply to Dr. J. A. SMALL. Telephone: Norwich 20080.

### CAMBERWELL HOUSE

#### 33, PECKHAM ROAD, LONDON, S.E.5

Telegrams: "PSYCHOLIA, LONDON." Telephone: RODNEY 4242 (2 lines).

#### For the Treatment of Mental Disorders

Completely detached Villas for mild cases. Voluntary Patients received. Twenty acres of grounds; own garden produce. Hard and grass tennis courts, putting greens. Recreation Hall with Badminton Court, and all indoor amusements. Occupational therapy. Calisthenics. Actinotherapy, prolonged immersion baths, shock, and also modified insulin treatment. Chapel.

Senior Physician, DR. HUBERT JAMES NORMAN, assisted by a resident Medical Staff and visiting Consultants. An illustrated Prospectus giving fees, which are strictly moderate, may be obtained upon application to the SECRETARY.

THE CONVALESCENT BRANCH IS HOVE VILLA, BRIGHTON, and is 200 ft. above sea-level.

### EPHING HOUSE

#### LITTLE BERKHAMSTED, nr. HERTFORD, Herts

An attractive and comfortable PRIVATE HOME, beautifully situated in its own grounds 400 ft. above sea-level. Exceptionally healthy air and position affords every facility for convalescence. Foam Baths, Billiards, Squash Rackets, Lawn Tennis, Croquet, Bowls, Farm Produce, etc.

Treatment for Ladies and Gentlemen suffering from Insomnia, Functional Nervous Disorders, Alcohol and Drug Habits, Chronic Heart and Kidney Diseases; also Convalescing Cases. Telephone: Essendon 212. Apply J. C. BAKER, M.B.

### THE MAGHULL HOMES FOR EPILEPTICS

#### (INC.), MAGHULL, near LIVERPOOL

Open Air Occupation and Recreation for Patients. Farming, Gardening, Football, Cricket, Tennis, Bowls. School recognized by Board of Education. Fees:—1st Class (men only) from £3 per week.

2nd Class (men and women) from 37s. 6d. per week.

3rd Class (men and women) Supported by:—Public Assistance Committees from 27/6 p.w. Education Committees from 33/6 p.w. Private from 21/- p.w.

For further particulars apply:—C. EDGAR GRISEWOOD, A.C.A., Sec., 20, Exchange Street East, Liverpool, 2.

### NORTHUMBERLAND HOUSE

#### GREEN LANES, FINSBURY PARK, N.4

A PRIVATE HOSPITAL for the treatment of mental and nervous illnesses. Conveniently situated and easy of access from all parts. Six acres of ground, facing Finsbury Park. Voluntary and Temporary Patients received without certification. Shock therapy, Psychotherapy, and other modern forms of treatment. Air-raid Shelters have been provided. Telephone: Stamford Hill 2688. Telegrams: "Subsidiary, London." For further particulars apply to the MEDICAL SUPERINTENDENT.

### STRETTON HOUSE

#### CHURCH STRETTON, SHROPSHIRE (Est. 1853)

A PRIVATE HOME for the treatment of Gentlemen suffering from Mental and Nervous Illness, including the allied disorders of Alcoholism and the Drug Habit. All types of early Mental and Nervous cases are received without certificate as Voluntary Patients under the provisions of the Mental Treatment Act, 1930. Bracing hill country. (See Medical Directory, p. 2328.) Apply to the MEDICAL SUPERINTENDENT. Phone: 10 P.O. Church Stretton.

### CRICHTON ROYAL, DUMFRIES

#### For Nervous and Mental Disorders

Cases of alcoholism and drug addiction are admitted. Special department for Insulin Therapy. As the Hospital is well endowed, terms are exceptionally moderate. Medical certificates given anywhere in the British Isles are valid for admission of patients. Physician-Sup.: P. K. MCCOWAN, J.P., M.D., F.R.C.P., D.P.M., Barrister-at-Law. Telephone: Dumfries 1119.

### SHAFTESBURY HOUSE

#### FORMBY-BY-THE-SEA, near LIVERPOOL

Specially built and licensed for the care and treatment of a limited number of ladies and gentlemen suffering from Nervous and Mental breakdown. Voluntary and certified patients received. Ladies also admitted as Temporary Patients without Certification. Terms moderate.

Apply RESIDENT PHYSICIAN, who may also be seen at 31, Rodney Street, Liverpool, by appointment. Tel.: No. 8 Formby.

### THE GROVE HOUSE

#### CHURCH STRETTON, SHROPSHIRE

Private Home for Ladies mentally ill. Voluntary and Temporary Patients received. Medical Superintendent: Dr. J. A. MCCLINTOCK.

### LAVERSTOCK HOUSE, nr. SALISBURY, WILTS

Private Mental Home for Certified and Uncertified Ladies and Gentlemen. Lovely house and gardens (18 acres). ESTABLISHED 200 YEARS, MODERN TREATMENTS. Illustrated brochure may be obtained from Dr. HORACE HILL, M.R.C.P., Physician-Superintendent. Tel.: Salisbury 2612.

### COURT HALL, KENTON, near EXETER

FOR THE TREATMENT OF EIGHT LADIES, VOLUNTARY, TEMPORARY, and CERTIFIED PATIENTS.

### CLIFFDEN, TEIGNMOUTH

FOR EARLY AND CONVALESCENT CASES. Recreational Therapies are held daily by skilled Leaders. The house stands high with spacious balconies and extensive views of the South Devon coast. Beautiful garden. Own Dairy in 25 acres. Private road to beach. There is also a charming house, EBWORTHY, MANATON, DARTMOOR, situated in 20 acres 1,100 ft. up for bracing moorland air. Resident Physicians: BERTHA M. MULES, M.D., B.S.; ANNE S. MULES, M.R.C.S., L.R.C.P. Telephones: Starcross 259 and Teignmouth 289.

### THE OLD MANOR, SALISBURY

Telephone: 3216 and 3217.

A Private Hospital for the Care and Treatment of those of both sexes suffering from MENTAL DISORDERS. Extensive grounds. Detached villas. Chapel. Garden produce from own gardens. Terms very moderate.

### Convalescent Home at Bournemouth

standing in 12 acres of ornamental grounds, with separate villas, tennis courts, etc. Patients or Boarders may visit the Home by arrangement. Illustrated Brochure on application to the MEDICAL SUPERINTENDENT, The Old Manor, Salisbury.

### CHEADLE ROYAL, CHEADLE, CHESHIRE

A registered Hospital for MENTAL DISEASES, and its Seaside Branch, GLAN-Y-DON, Colwyn Bay, N. Wales. The object of this Hospital is to provide the most efficient means for the treatment and care of Patients of both sexes suffering from MENTAL and NERVOUS DISEASES. The Hospital is governed by a Committee appointed by the Trustees of the Manchester Royal Infirmary. VOLUNTARY, TEMPORARY, and CERTIFIED PATIENTS RECEIVED. For terms and further information apply to the Medical Superintendent. Telephone: Gatley 2231.

### CALDECOTE HALL, NUNEATON

A beautifully situated country mansion. Safe area in Warwickshire. Extensive grounds in which games and occupational therapy are available for treatment of "Neuroses and Alcoholism" in men. (Certified cases not received.) Illustrated brochure from Resident Med. Superintendent: A. E. CARVER, M.D., D.P.M. Phone: Nuneaton 241.

### PECKHAM HOUSE

#### 112, PECKHAM ROAD, LONDON, S.E.15

Telegrams: "ALLEVIATED, LONDON."

Telephone: RODNEY 2641-2642.

A Private Mental Hospital for Ladies and Gentlemen suffering from Nervous and Mental Illness, where the amenities of a comfortable home are combined with full investigation and every well-established modern treatment. TERMS FROM 3½ GUINEAS WEEKLY. Illustrated Prospectus may be obtained from the PHYSICIAN-SUPERINTENDENT.

### BOWDEN HOUSE, HARROW

Wartime address: Alkerton Grange, Eastington, nr. Stonehouse, Glos. Tel.: Stonehouse 206

### THE LAWN, LINCOLN

A registered Hospital for MENTAL and NERVOUS DISEASES. Situated in Lincoln on the hill top, near the cathedral and castle. Spacious grounds with tennis and croquet courts, etc. Certified, temporary and voluntary patients of both sexes are received. Treatment includes ELECTRICAL CONVULSIVE THERAPY and PSYCHOTHERAPY for suitable cases. Further particulars from Medical Superintendent, John F. R. Goodlad, M.A., M.B., Ch.B., D.P.M., who may be seen by appointment. Telephone: Lincoln 165.

### DUCHY HOUSE CLINIC, HARROGATE

Private Hospital for investigating obscure illnesses, well equipped for the investigation and treatment of rheumatic affections, diabetes, and diseases of the blood and alimentary tract. The services of a full consulting staff available; fees inclusive for investigation. For brochure apply Secretary. Tel.: Harrogate 3872.

### WYE HOUSE, BUXTON

A private Hospital for the treatment and care of Nervous and Mental Disorders in both sexes. Voluntary, Temporary and Certified patients received. Apply to Dr. IAIN MACPHAIL. Tel.: Buxton 130.

### THE MUNDESLEY SANATORIUM

#### at VALE ROYAL ABBEY

This modernized mansion is situated in its own beautiful grounds in the heart of Cheshire. Terms from 6½ to 10½ guineas weekly. Tel.: Winsford 3336. Station: Hartford. Postal Address: Vale Royal Abbey, Hartford, Cheshire. Medical and Surgical Staff: S. VERE PEARSON, M.D. Cantab, M.R.C.P. Lond., E. C. WYNE-EDWARDS, M.B. Cantab, F.R.C.S. Ed., GEORGE DAY, M.D. Cantab.

**BOVRIL MEDICAL AGENCY**

ALDINE HOUSE, 10-13, BEDFORD ST.,  
STRAND, LONDON, W.C.2.

Telephone: Temple Bar 1616-8—F. M. THEW.

**BEDS.**—Country practice. Close good town. Receipts £1,200. Panel 1,500. Good house. Garden.

**DEATH VACANCY.**—Devon. Beautiful District. Receipts £2,000. Panel about 800. Suit. use and surgery premises. Prem. 1 yr.

**CHESHIRE.**—Large town. Receipts £2,200. Panel abt. 800. House to rent. Prem. 1½ yrs. or nr.

**YORKS.**—Large town. 1/2 share of about mainly instals. abt. £6,000. Garden.

Wood mixed Garden. est. country built. house. abt. £2,500. rent. Prem.

500, £1,500 down. N. LONDON.—Practice of £2,300. Panel 500. House to rent. Prem £2,000.

W. ENGLAND.—Non-panel Practice, average 500. Large house.

**NORTHANTS.**—Old-est. PRACTICE, producing over £6,500. Panel 3,200. Good house and garden. Prem. by arrangement.

**SUFFOLK.**—1/3 share of £7,400, £4,000 panel 1 appts. Attractive house to rent.

**CORNWALL.**—Very sound PRACTICE, producing about £2,000. Panel 700. Good house. c. garden Rent £100. Prem. £2,250, part instals.

**MIDLANDS.**—Exc. sound PRACTICE, worth £2,500. Panel 1,700. Good house, rent £80. m. £3,000, £1,000 down.

**GLOS.**—Sound Practice in beautiful district. Receipts abt. £1,900. Panel 2,000. Good house, den, rent £70. Prem. £2,300, easy instals.

**WARWICKS.**—Good town. Receipts £2,400. Panel 1,150. Well-sit. house to rent.

**YORKS.**—Large town. Half-share of abt. 500 in very sound Practice. Panel 7,000. t. house. Prem. 1½ yrs. by instals.

**DEVON.**—Nr. Somerset Border. Unopposed entry town PRACTICE, av. over £1,100. Panel 450. Fine house. Garden. Prem. 1½ yrs.

**DEATH VACANCY.**—SUFFOLK.—Old-est. entry PRACTICE in pleasant dist., av. over 500. Panel 1,290. Very low prem.

**CUM TENENS & ASSISTANTS (men & women) GENTLY REQUIRED.**—Details on application.

**WESTERN MEDICAL AGENCY**

(Dr. K. H. Bennett. Dr. W. J. Paramore.)  
67/68, CHANDOS PLACE, STRAND, W.C.2.  
Tel.: Temple Bar 2532.

1. **SOMERSET.**—Favourite city. Partnership. Asstp. with view, whole practice, or panel only. Panel over 2,500. Receipts aver. £2,302. House rent 2. **LONDON, E.2.**—Panel 1,500. Was over 2,000. Pop. returning. Receipts £1,200. House rent. Prem. 1½ yrs. or offer.

3. Many good Duration posts vacant. Cornwall, Somerset, etc.

**LEE & MARTIN, LTD.**

Established 1877.

71, TEMPLE ROW, BIRMINGHAM.

'Grams: "Locum, B'ham." 'Phone: Mid. 5963.

1. **GLOS.**—Well-established mixed PRACTICE. Receipts £1,886 p.a. Panel 2,000. Good house.

2. **STAFFS.**—Good PRACTICE. Receipts £2,418 Panel 1,710. Good house.

3. **STAFFS.**—Well-established PRACTICE. Receipts £1,295. Panel 1,417. Good house rent.

4. **STAFFS.**—Nice-class PRACTICE. Receipts £1,434. Panel 811. Good house. Many others on application.

**PERCIVAL TURNER, LTD.**

MEDICAL AGENCY (Est. 60 Years).

25, MAIDEN LANE, STRAND, W.C.2.

'Phone: Temple Bar 9011.

Night: Walton-on-Thames 1785.

**NR. MAIDSTONE, D.V.**—£1,370 p.a., panel 850, appts., large house.—**SURREY**, 1/3 share of over £4,000.—**YORKS. COAST, D.V.**—£1,600 p.a., panel 988.—**MIDDX. SUBURBS**, 1/4 of £12,000 p.a., panel 5,100.—**LONDON, W.**—about £1,000 p.a., panel 1,450, prem. £1,200.

**ASSISTANTS AND LOCUMS REQUIRED.**

**BRITISH MEDICAL BUREAU**

Northern Branch:

33, CROSS STREET, MANCHESTER, 2.

Tel.: Blackfriars 3925; after office hours

Rusholme 2549. Tel.: "Locum, Manchester." **NORTHUMBERLAND**, country, £2,300 p.a., panel £900 p.a., modern house to rent.—**NR. MANCHESTER**, £1,850 p.a., panel 1,600, nice house.—**LANCS.** Over £1,700, panel 1,900, good house.—**YORKSHIRE, N.R.**, country, £1,600 p.a., panel 1,000, house rent £35 p.a.—Many others.

**LOCUMS AND ASSISTANTS REQUIRED.**

**BRITISH MEDICAL BUREAU**

TAVISTOCK HOUSE SOUTH,  
TAVISTOCK SQUARE, W.C.1.

Telegrams: Triform, Westcent, London.

Telephone: Euston 1644 and 1645.

All Branches of Medical Accountancy undertaken

1. **S. OF ENGLAND.**—Market town. Half-share of over £4,000 p.a. Panel 1,500. Modern Hospital.

2. **GLOS.**—Receipts £1,800. Panel 2,000. Good house and garden. Rent £70. Premium £2,300.

3. **YORKSHIRE COAST.**—Share worth over £4,000 p.a. in country town Practice. Small panel. Charming house. Premium 1½ years.

4. **NORTHANTS.**—Country. Receipts £1,200. Panel £500. House to rent. Premium 1½ years.

5. **LONDON, S.E.16.**—Receipts past year £580. Panel 586. No midwifery. Reasonable offer.

6. **CHESTER.**—Non-dispensing Practice, £2,200 p.a. Panel 860. House to rent. Premium 1½ years or near.

7. **SURREY.**—Nice district. Receipts 1942 £1,060. Panel 550. House to rent. Premium £850.

8. **S. MIDLANDS.**—Share worth £1,700—£1,800 p.a. in flourishing town. Panel 8,000. Nice house.

9. **CORNWALL.**—Market town. Half-share (£1,250 p.a.). Panel about 1,100. Short Assistantship.

10. **SURREY.**—Delightful district. Receipts abt. £1,400. Small panel. Attractive house to rent.

11. **E. ANGLIA.**—Country. Receipts about £2,700. Panel about 1,400. Nice house for sale. Or a share would be sold.

12. **SURREY.**—Receipts about £1,000. Panel 1,040. Small house. Premium £750.

13. **LONDON, E.**—Receipts about £1,200. Panel about 1,500. Rent £70. Premium 1½ years or near. Must be English or Scottish.

14. **YORKS. N.R.**—Half-share of £6,500 p.a. Panel 7,000. Premium by arrangement.

15. **DEATH VACANCY.**—W. Suffolk. Receipts £2,000. Panel about 1,300. Good house. Rent £80.

16. **SUFFOLK.**—Share returning over £2,400 in Market town. Well-built house, sale or rent.

17. **SUFFOLK.**—Country. Receipts about £830 (nearly £500 Panel). House rented. Premium 1½.

18. **ESSEX-HERTS BORDER.**—Country. Receipts £840 (£450 Panel). Premium £750.

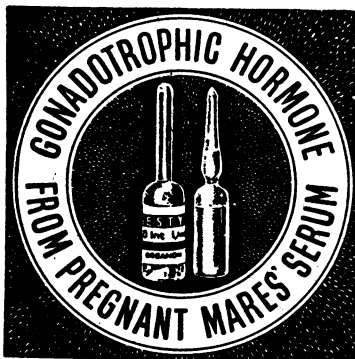
19. **MIDLAND CITY.**—Receipts past year £1,175 (£875 Panel and Club). Rent £60.

20. **N. DEVON.**—Country town. Receipts £7,000. One-fifth to one-fourth share. Premium by arrgt. Good house for sale. Premium £1,400.

21. **LINCS.**—Country. Receipts about £1,200. Good house for sale. Premium £1,400.

Scottish Branch, 21, Alva Street, Edinburgh, 2. Manager, G. RUSSELL. Phone: Edin. 23969.

**When Pituitary Gonadotrophic  
secretion is inadequate, use . . .**



**GESTYL**  
(SERUM GONADOTROPHIN)

**IN THE FEMALE**  
STERILITY • INFANTILISM  
AMENORRHOEAS  
UTERINE HAEMORRHAGE

**IN THE MALE**  
STERILITY • OLIGOSPERMIA  
UNDERDEVELOPMENT

provided the symptoms have purely functional origin



Sample Ampoules of 200 and 400 I.U. on request

**R G A N O N**  
BRETTENHAM HOUSE, LONDON W.C.2

Telephone: TEMPLE BAR 6785  
Telegrams: MENFORMON, RAND, LONDON

# St. Mary's Hospital VACCINES

FOR RESPIRATORY AFFECTIONS

## Anti-Catarrh Vaccine

The ideal time for commencing prophylaxis against "colds" is during September. Three graduated doses, with an interval of from 7 to 10 days between each, are recommended. The vaccine especially designed for the purpose is "Anti-Catarrh Vaccine," containing *M. catarrhalis*, with *Pneumococcus*, *B. pneumoniae*, *B. septus*, *H. influenzae* and *Streptococcus*. Similar vaccines for the treatment of respiratory affections are also available.

*Supplied in sets of 3 or 6 graduated doses and in ampoules of 1 c.c.; also in bottles of 10 c.c. and 25 c.c.*

## Influenza Virus Vaccine

Prepared from viruses isolated from cases of epidemic influenza in man. For protection against influenza, it is recommended that this virus vaccine be used in conjunction with a bacterial vaccine (Anti-Influenza Vaccine, Mixed). A total of three doses given in September or October supplemented by a further two doses in December or January is the usual prophylactic course.

*Supplied in sets of five doses for immunization of one person, or in 1 c.c. ampoules or 10 c.c. vials of either virus or bacterial vaccine.*

## "W.A.P.T."

This is whooping-cough vaccine and diphtheria prophylactic combined. It allows simultaneous immunization against both diphtheria and whooping-cough in four doses only.

*Supplied in sets of four 1 c.c. doses.*

*These vaccines are prepared in the Laboratories of the Inoculation Department (Founder: Sir Almroth E. Wright, F.R.S., M.D., etc.) of St. Mary's Hospital, London, W.2, where constant observation of their effects on patients in the Research Wards and Out-Patient Clinics of the Department maintains their standard at a very high level.*

SOLE AGENTS

**Parke, Davis & Company,**  
50, Beak Street, London, W.1.

INC. U.S.A., LIABILITY LTD.



## A PALATABLE AID for Young Children

In the treatment of constipation in children full co-operation may be obtained when 'Petrolagar' is prescribed.

Children like its pleasant taste and its gentle action.

# 'Petrolagar'

BRAND PARAFFIN EMULSION

In Two Varieties: 'Petrolagar' Plain  
and 'Petrolagar' with Phenolphthalein

**JOHN WYETH & BROTHER LIMITED**  
Clifton House, Euston Rd., London, N.W.1

(Sole distributors for Petrolagar Laboratories Ltd.)