



## *Only the Treatment has changed.*

Despite the speeding-up of modern life constipation still trails man.

In place of the perpetual enema and the drastic griping purgative, we have the smoothly-acting palatable evacuant, Agarol Compound.

Agarol is a mineral oil emulsion with a small dose of phenolphthalein, which for many years has been of service for the relief and cure of acute and habitual constipation.

The reliability of Agarol and the certainty with which it obtains results, without unpleasant after-effects or harm to the patient's alimentary system, make it suitable for use in any circumstances and at any age period.

# AGAROL

## *for Constipation*

(Temporary wartime address)

WILLIAM R. WARNER & CO. LTD.,  
150-158, KENSINGTON HIGH STREET, LONDON, W.8

### **Why ANDREWS is the Ideal Tonic Laxative**

Andrews is a pleasant tasting, effervescent aperient with tonic properties, and is a valuable aid to Inner Cleanliness.

Andrews is beneficial in most digestive disorders, feverish conditions, the ailments of children, and in pregnancy and lactation. Its use may be discontinued without reaction when the need for it ceases.

Andrews justifies the description of "Ideal Tonic Laxative" because:—

**FIRST** . . Patients like taking Andrews, because its brisk effervescence is immediately refreshing and stimulating, it sweetens the mouth and helps to clean the tongue.

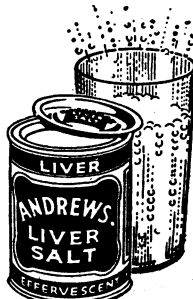
**NEXT** . . Andrews allays gastric discomfort, heart-burn and nausea by diminishing the stomach's acidity and relieving flatulence.

**THEN** . . Andrews increases bile flow, relieves hepatic congestion, and improves digestion. It is partly absorbed from the intestine as alkali, and therefore helps to correct acidity in the blood and to stimulate kidney function.

**FINALLY** . . Acting by osmosis, Andrews clears the bowels gently and entirely without irritation.

### **ANDREWS LIVER SALT**

SCOTT & TURNER LTD • ANDREWS HOUSE • NEWCASTLE-UPON-TYNE 2



### **A LIFE-SAVING OXYGEN SERVICE**

Complete, self-contained, portable, air-conditioning units—providing a controlled supply of oxygen to the patient's bed—this is the rental service made available day and night by OXYGENAIRE LIMITED. Over one hundred hospitals in the London area use this

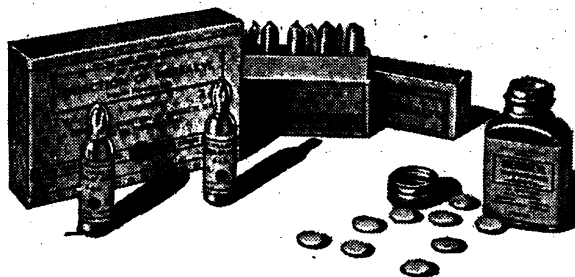
service regularly; in addition, numerous County Councils throughout Great Britain. The service is available day and night to all Hospitals, Nursing Homes and Private Practitioners. Installations are made at the shortest possible notice, conditions of comfort being assured.

DAY AND NIGHT

## *Oxygenaire Ltd.*

WELBECK 5245

8 DUKE STREET, WIGMORE STREET, LONDON, W.1

**MERSALYL-BOOTS****MERCURIAL DIURETIC**

A complex and non-irritating compound of mercury for use in the treatment of oedema of cardiac origin and in renal oedema provided there is no serious impairment of renal function.

Infection of Mersalyl—Boots

Injectio Mersalyli B.P.

Box of 6 x 1 c.c. ampoules - - 3/5

Box of 6 x 2 c.c. ampoules - - 5/4

Mersalyl Compound Tablets—Boots

Bottle of 25 tablets - - - 4/4½

Prices net

**ETHANOLAMINE OLEATE**

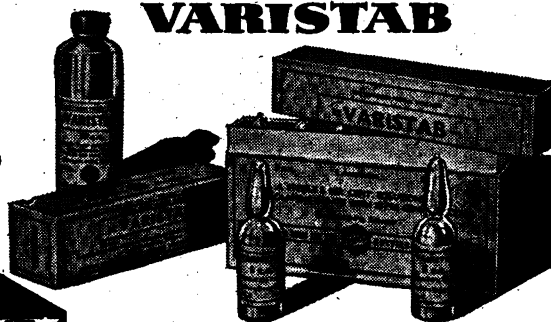
A stable aqueous 5 per cent. solution of Ethanolamine Oleate for the injection treatment of varicose veins, and indirectly varicose ulcers and varicose eczema. Clinical results have shown that Varistab is almost painless on injection and does not produce allergic reactions.

Box of 3 x 5 c.c. ampoules - - 2/11

Box of 6 x 5 c.c. ampoules - - 5/4½

30 c.c. rubber-capped vial - - 4/4½

Prices net

**VARISTAB**

Obtainable through all branches of



Literature sent on request

MEDICAL DEPARTMENT

BOOTS PURE DRUG COMPANY LIMITED NOTTINGHAM

B860-63A

# ST. BARTHOLOMEW'S HOSPITAL OPERATION TABLE

## Latest Improvements

include

Easy to operate Release Lever for lowering the table; Trendelenburg position increased to 75° tilt; Foot-operated rubber-covered Floor Brake, and rubber-tyred wheels fitted with self-oiling bearings.

The St. Bartholomew's Hospital Operation Table is now manufactured in five different models and thus supplies a range of modern operation tables embodying the latest ideas of well-known surgeons for carrying out surgical operations.

All models can be supplied with either tripod or platform base.

Prices from £89 10s. 0d.

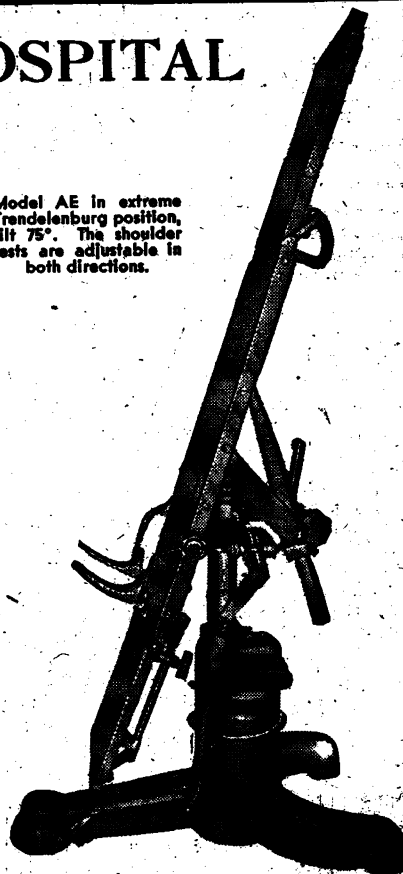
Over 1,200 of these tables are in use at home and abroad.

**ALLEN & HANBURYS LTD., LONDON, E.2**

Manufacturers of Surgical Instruments and Appliances, Sterilized Surgical Sutures, Hospital Furniture, and Electro-Medical Apparatus.

Showrooms: 48, WIGMORE STREET, W.1

Model AE in extreme Trendelenburg position, tilt 75°. The shoulder rests are adjustable in both directions.



# 'ROCHE' News in Brief

## 'Nestrovite' Emulsion

Supplies of 'Nestrovite' Tablets, we regret to say, are for the moment entirely exhausted. We are, however, pleased to announce that deliveries of 'Nestrovite' Emulsion are expected at the end of this month and these will be allotted in rotation in reasonable quantities against orders. Each bottle of 'Nestrovite' Emulsion contains a supply sufficient for 3 to 4 weeks. In doses of 5 c.c. (approx. 1 tea-spoonful) the following amounts of vitamins are obtained:—Vitamin A 2,500 units, Vitamin D 500 units, Vitamin B<sub>1</sub> 80 units, Vitamin C 300 units (15 mg.).

## Vitamin Needs of Wartime Workers

The transfer of large numbers of the population into industry has brought with it numerous problems, and by no means the least is the maintenance of an adequate nutritional standard. Although much work on our vitamin needs has been carried out in Great Britain, much of it has not been made public. In the United States numerous reports have been issued, and it seems that in spite of the higher wages the standard of living is in many cases below the optimum in vitamins and calcium. In studying the diet of a representative group of over 1,000 aircraft workers in Southern California it was found that 14 per cent were deficient in vitamin A, 43.2 per cent in B, 46 per cent in C and 24.8 per cent in calcium. (*Milbank Med. Fund Quarterly*, 1942, 20, 329.)

## Ulcerative Stomatitis in Malta

An interesting report on ulcerative stomatitis associated with avitaminosis referred to an outbreak of ulcerative conditions in the mouth in the child population of Malta between Sept., 1942, and Feb., 1943. Over 120 patients were examined. The majority was not seen until an acute ulcerative stage had been reached. Local treatment generally controlled the condition but the tissues did not return to normal and recurrence was common. When, in conjunction with local treatment, 25 mg. tablets of ascorbic acid were given, one per day to children under 7 years and 2 or 3 per day to those over 7, immediate and lasting improvement ensued. (*Brit. Dent. Journal*, 1943, 74, 257.)

## Treatment of Delayed Menstruation

According to a recent investigation delayed menstruation may be, on the basis of recent findings as to the part played by hyperemia in producing menstruation, the result of lack of vascular response in the endometrium. The author, after making a thorough study to ensure that 'Prostigmin' would not cause abortion, administered the drug to 60 unselected patients with menstrual delay. The dosage was 3 injections of 2 ampoules of 'Prostigmin' solution ( $\frac{1}{2}$  mg. in each c.c.) on three successive days. The conclusion to be arrived at is that if menstruation is restored, the woman is not pregnant; if there is no response, pregnancy may have occurred or an endocrine disturbance has taken place. (*North West Med. Journal*, 1942, 41, 384.)

## 'Prostigmin' in Myasthenia Gravis

The gratifying effect of 'Prostigmin' in myasthenia gravis is well known, yet it has recently been pointed out that medical writers are too cautious in their recommendations in that they advise the administration of 'Prostigmin' only in the more severe cases. Doctors with the greatest experience find that 'Prostigmin' can, and should, be given adequately for the relief of all symptoms. There is no justification for thinking that the regular administration of the drug may be harmful. 'Dosage depends on two main factors—the fluctuations of the disease and the regularity of the patient's activity. It is therefore simple to prescribe for stable patients who require greatest strength at regular times. Patients sometimes complain of increased weakness after the effect of 'Prostigmin' has passed, but our experience shows clearly that this "after-weakness" is not cumulative and those who take the most frequent doses are in fact free from it. It does not justify undue restriction of treatment.' (*Lancet*, Sept. 18, 1943, 2, 367.)

**ROCHE PRODUCTS LIMITED**  
Welwyn Garden City Herts

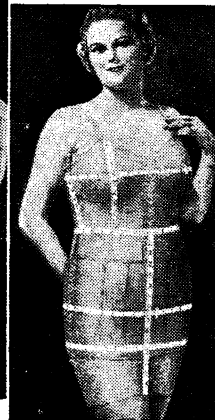
# Spirella

## SURGICAL CORSETRY SERVICE

— the "Abdominal" Figure



Her problem... PTOSIS



How it is met...



The final result...

Each figure is an individual study.

The Spirella Patented Modelling Garment determines the correct amount of support and control.

The finished result is not only a garment that fits, but one which gives instant relief to this condition.

*The name and address of nearest Spirella Corsetiere who will wait upon Doctor, Nurse or patients as directed, will gladly be sent on request.*

**THE SPIRELLA COMPANY  
OF GREAT BRITAIN LTD.**

Letchworth, Herts.,  
and Spirella House, Oxford Circus, London, W.1



# VIMALTOL

(VI-MALT-OL)

## *A Delicious Concentrated Vitamin Food*

"VIMALTOL" presents special advantages to the physician requiring a product which incorporates the important vitamins in a form entirely pleasant and acceptable to every patient.

"Vimaltol" is a concentrated and economical vitamin food with a delicious orange flavour. The vitamins are supplied from specially prepared malt extract and yeast, which is one of the richest natural sources of vitamin B<sub>1</sub>, together with Halibut Liver Oil fortified with additional vitamins.

"Vimaltol" is thus an important aid in preventing or remedying the many abnormal conditions resulting from the deficiency of one or more of the essential vitamins in the average everyday dietary.

The routine use of "Vimaltol" ensures normal development of the growing organism and the maintenance of correct metabolism, while raising the general resistance against infection.

It is of signal value at certain physiological periods, such as infancy, adolescence, and pregnancy, to prevent deficiency diseases and to restore normal metabolism in the many "border-line" cases arising from insufficient intake or defective assimilation of the essential food factors.

"Vimaltol" has thus a very wide application in general practice for patients of all ages. It can be prescribed with advantage at all seasons.

A liberal supply for clinical trial sent free on request

A. WANDER LTD., 184, Queen's Gate, London, S.W.7.

Laboratories and Works: King's Langley, Herts.

M.306

# VAPEX

## INHALANT

FOR  
PERSONAL USE



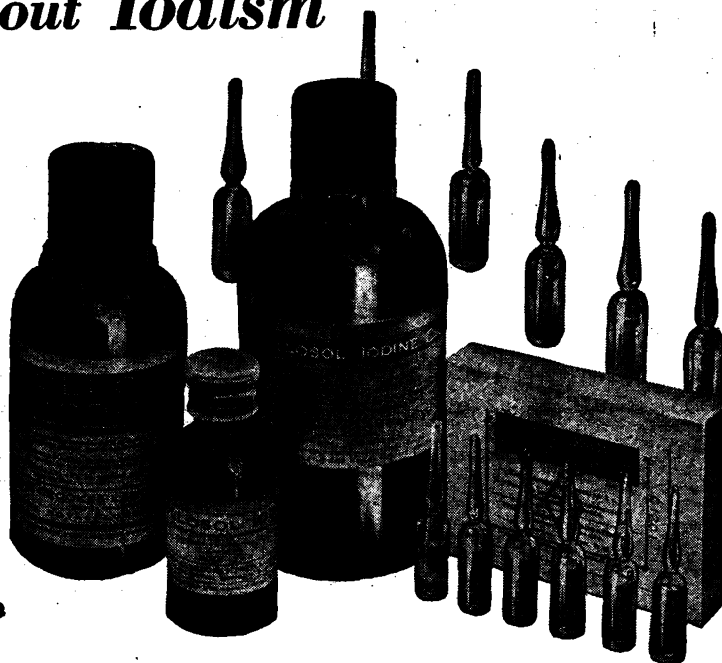
The pleasant unobtrusive odour of Vapex and its proved efficacy in the prevention and relief of the common cold, make it particularly suitable for personal use by the medical profession. Vapex is entirely free from the dangers attending oily or vasoconstrictive nebulae. A drop on the handkerchief lasts all day.

THOMAS KERFOOT & CO. LTD, Vale of Bardsley, LANCs.

K13a

# Iodine—without Iodism

Collosol Iodine has produced marked results in the treatment of rheumatism, actinomycosis, enlarged glands and goitre, the pneumonias, iodine deficiency, venereal disease, etc., and has a wide application in gynaecology. Because it is a colloidal compound it may be administered by the oral, subcutaneous or intravenous route without danger of sudden liberation of free iodine.



by *Crookes*

## COLLOSOL IODINE

THE CROOKES LABORATORIES (*British Colloids Ltd.*) PARK ROYAL, LONDON, N.W.10

## 'PRE-EMINENT IN THE RELIEF OF PAIN'

"WERE I limited (writes a London Consultant) to one method in physical medicine, that method would be infra-red irradiation." And for efficacious application of this valuable therapy in all its many indications, the most exacting physician finds all he requires—and more—in the Hanovia Sollux Lamps. The new Model VII gives six different stages of intensity from each of its alternative radiant heat and 'infra-red' sources, with ample facilities for applying these palliative rays from any distance, at any angle, and to any defined area.

Ask for our  
'SOLLUX LAMP' Booklet  
(please enclose 1d. stamp when writing  
to comply with Government decrees).

### SOME CLINICAL USES OF THE SOLLUX LAMPS:

#### SURGERY:

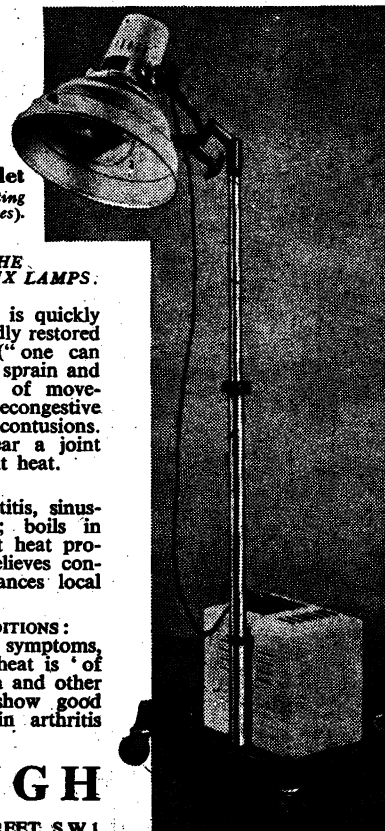
In sprains and strains pain is quickly alleviated and function rapidly restored by prolonged irradiation ("one can undertake to cure an acute sprain and produce complete freedom of movement in 3 days"). The decongestive action is marked in contusions. Fractures and swellings near a joint are best treated with radiant heat.

#### EAR, NOSE AND THROAT:

Indications include acute otitis, sinusitis, mastoiditis, laryngitis; boils in the ear and nose. Radiant heat produces active hyperaemia, relieves congestion, soothes pain, enhances local nutrition.

#### NERVOUS AND MUSCULAR CONDITIONS:

For neuritis and neuralgic symptoms, sciatica, migraine, radiant heat is 'of the greatest value.' Myalgia and other rheumatic manifestations show good response. Valuable also in arthritis and osteo-arthritis.



## HANOVIA • LTD • SLOUGH

Specialists in actinotherapy equipment.

LONDON SHOWROOMS: 3, VICTORIA STREET, S.W.1

*In the treatment of*  
**Staphylococcal Infections**

**QUINOLOR**  
brand Compound Ointment  
**SQUIBB**



"Quinolor" is an antiseptic ointment having remarkable qualities for promoting tissue repair. It is especially indicated in the treatment of staphylococcal infections generally, while good results are also obtained in the fungus infections.

The "Squibb" Service Department, Savory and Moore Ltd.  
61, Welbeck Street, London, W.1

(Q. 5a)

Made in England

In jars of 1 oz.  
and 16 ozs.

Sample and literature  
on request

## The Toothpaste with a Difference

Phillips' Dental Magnesia possesses the advantage in that it incorporates a high percentage of 'Milk of Magnesia', which has been employed for the past generation with success in controlling oral acidity and is recognised by the dental profession as an ideal antacid.

In recommending Phillips' Dental Magnesia to your patients you have the assurance

that not only is it markedly efficient in keeping the teeth scrupulously clean but, in addition, its regular use definitely combats the pre-disposing cause of dental decay.

Phillips' Dental Magnesia is particularly indicated as the agent of choice in the treatment of morbid gum conditions. Its refreshing taste is appreciated by both young and old.

THE CHAS. H. PHILLIPS CHEMICAL CO. LTD.  
179, Acton Vale, London, W.3



# Phillips' Dental Magnesia

*'Milk of Magnesia' is the Registered Trade Mark of Phillips' preparation of magnesia.*

# 'Wellcome' GLOBIN INSULIN

(with Zinc)

This important new development meets the need for an insulin preparation quick in onset and *moderately* prolonged in action. In many cases a single daily dose gives satisfactory control, without night or early morning hypoglycaemia. 'Wellcome' brand Globin Insulin (with Zinc) is a clear stable solution of insulin combined with globin and a small percentage of zinc.

*Descriptive booklet on request.*

Available in one strength only: 80 units per c.c. in bottles containing 5 c.c. Price 5/2



**BURROUGHS WELLCOME & CO.**

(The Wellcome Foundation Ltd.)

LONDON

ASSOCIATED HOUSES : NEW YORK MONTEAL SYDNEY CAPE TOWN BOMBAY SHANGHAI BUENOS AIRES

## 'ANETHAINE'

### FOR SPINAL ANAESTHESIA

● "Anethaine" is para-butyl-amino-benzoyl-dimethyl-amino-ethanol-hydrochloride, which is the most extensively used spinal anaesthetic in America. The dosage for spinal anaesthesia is from 5-20 mg., that is, about one-tenth that of procaine. There are fewer after effects, and the anaesthesia is more prolonged. This very important local anaesthetic is now introduced in this country in special packs for spinal anaesthesia.

#### 'ANETHAINE' SPINAL DRY AMPOULES (10 & 20 mg.)

Amethocaine hydrochloride is present as a finely divided solid, and dissolves instantaneously in cerebrospinal fluid, saline, glucose solution, etc.

6 & 25 X 10 mg.  
ampoules; 6 & 25 X 20  
mg. ampoules.

#### 'ANETHAINE' SPINAL 1% SOLUTION (20 mg. in 2 cc.)

Each 2 cc. ampoule contains 20 mg. of amethocaine hydrochloride in saline solution.

6 and 100 X 2 cc.  
ampoules.

#### GLUCOSE SOLUTION (10%) GLAXO

To be used with 'Anethaine' Spinal to produce 'heavy' solutions which allow finer control of the level of analgesia with a smaller dose.

25 X 3 cc. ampoules.

Other 'Anethaine' preparations for surface and infiltrative analgesia are available. Further particulars on request.

### 'ANETHAINE' SPINAL

BRAND OF AMETHOCAINE HYDROCHLORIDE

GLAXO LABORATORIES LTD., GREENFORD, MIDDLESEX. BYRON 3434

# GOLD THERAPY MYOCRISIN



'MYOCRISIN' brand sodium aurothiomalate, a gold product for the treatment of rheumatoid arthritis, is effective, safe, and inexpensive. The 'Myocrisin' booklet, available on request, will tell you what you need know of this therapy to enable you to undertake the treatment of suitable cases in your own practice. May we send you a copy?

Our Medical Department will be glad to supply you with further information.

★ 'MYOCRISIN' is available in:—

Aqueous Solution or Suspension in Oil.			
Ampoules of 0.01 gramme	-	-	1/9d.
" " 0.02 "	-	-	2/0d.
" " 0.05 "	-	-	2/6d.
" " 0.10 "	-	-	3/3d.
" " 0.20 "	-	-	4/7½d.

Also available in boxes of 10 ampoules at reduced prices and in ampoules of 0.30 and 0.50 gramme if required.

Less professional discount and plus purchase tax.

★ TRADE MARK

Manufactured by MAY & BAKER LIMITED

Distributed by PHARMACEUTICAL SPECIALITIES (MAY & BAKER) LTD., DAGENHAM

6216

## VITAMIN THERAPY

### Clinical indications for the use of VITAMIN B<sub>6</sub> (PYRIDOXINE)

Administration of pure vitamin B<sub>6</sub> has proved useful in various syndromes. Improvement has been recorded in certain cases of idiopathic epilepsy and in amyotrophic lateral sclerosis. Decreased stiffness and rigidity have followed its use in non-postencephalitic parkinsonism.

Pyridoxine has also been reported effective in removing the ataxy remaining after nicotinic acid treatment of pellagra. It has been used successfully in a few cases of hypertrophic muscular dystrophy, and to relieve the early symptoms of paralysis agitans.<sup>1</sup>

The particular deficiency symptoms which have responded to Vitamin B<sub>6</sub> administration are extreme nervousness, insomnia, irritability, cramping abdominal pain, muscular weakness and rigidity with difficulty in walking.

Clinical experiments with vitamin B<sub>6</sub> (J.A.M.A. 115.3.209) show its effects in toxic peripheral neuritis, and on the haemopoietic system (*Nature*, 1940, 145, 388). Its effect on the skin is well known.

Bemax is probably the richest of all dietary sources of vitamin B<sub>6</sub> (approximately 0.45 mg. per oz.), and its regular use should therefore be of real benefit to patients showing groups of the above symptoms and signs. The fact that Bemax also provides the other elements of the B complex may be considered an additional advantage.

In cases where massive doses are indicated, pure vitamin B<sub>6</sub> (Pyridoxine) is available in 10 mg. Tablets and 50 mg. Ampoules.

<sup>1</sup>J. Amer. med. Assoc. (1941) 117, 1496.

Further particulars from

## VITAMINS Limited

(Dept. B.X.3.), 23, Upper Mall, London, W.6



# DEHYDROCHOLIN B.D.H.

## *In Liver Insufficiency*

Varying degrees of liver insufficiency are commonly encountered in practice. The patient with sallow complexion, furred tongue, morning nausea, anorexia, headache, discomfort in the region of the liver, lassitude and depression is all too familiar.

Dehydrocholin B.D.H. is the most powerful cholagogue available, and in such cases produces prompt and effective relief of symptoms. In the initial stages Dehydrocholin B.D.H. should be administered by injection, and thereafter treatment is continued by the administration of tablets by mouth until recovery is complete.

Dehydrocholin B.D.H. is available for intravenous injection in ampoules containing a solution of sodium dehydrocholate, and for oral administration in tablets of dehydrocholic acid.

*Details of dosage and other relevant information will be gladly supplied on request.*

THE BRITISH DRUG HOUSES LTD. LONDON N.1

Telephone : Clerkenwell 3000

Telegrams : Tetradome Telex London

Dhyd/E/9

## THE HAEMOPOIETIC PRINCIPLES IN LIVER

The members of the vitamin B complex  
present in liver in their natural state  
with added  
Nicotinic Acid (10 mg.)  
Vitamin B<sub>1</sub>  
(320 I.U.)

### A UNIQUE PREPARATION

in the therapy of anæmias, Hepatex-T exerts its effect on the whole of the blood-forming mechanism and its parent tissue the reticulo endothelium.

*Issued in boxes of 6 x 2 c.c. ampoules and 10 c.c. rubber-capped bottles.*

Further details on request to:

**London:** Home Medical Department, Bartholomew Close, E.C.1.

**Liverpool:** Home Medical Department, Speke, Liverpool, 19.



### INDICATIONS

An adjuvant in the treatment of resistant cases of pernicious anæmia.

An accelerator of the action of iron in secondary anæmias.

A stimulator of leucocyte production in chronic hypogranulocytosis.

An aid in the nutrition of the capillary endothelium and the formation of platelets in thrombocytopenic purpura.

## HEPATEX-T

A PRODUCT OF

**MEDICAL EVANS RESEARCH**

*Made in England at the Evans Biological Institute by*

EVANS SONS LESCHER AND WEBB LTD., LIVERPOOL AND LONDON

M33c

# Liquid Citralka

FOR SYSTEMIC ALKALIZATION

*In Febrile Conditions and Acute Infections; Sulphanilamide Therapy; Pyelitis, Cystitis, Urethritis, etc.; Diarrhoea and Vomiting; Pre-operative Treatment, etc.*

Liquid Citralka is a palatable 25 per cent. solution of disodium hydrogen citrate, designed to aid in maintaining physiological alkalinity. It is a systemic alkaliizer, producing basic ions in the blood and urine. If the dosage has been adequate, the urine starts to become alkaline within two to four hours.

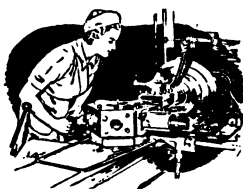
Liquid Citralka does not reduce gastric acidity nor impair protein digestion, nor does it cause eructations or flatulence. It is indicated for the prevention and treatment of acidosis and for alkalinizing urine and will be found of value as supplementary treatment in many common clinical conditions.

*In bottles of 8 fl. ounces.*

**Parke, Davis & Company,**

**50, Beak Street, London, W.1.**

INC. U.S.A., LIABILITY LTD.



## THE WAR-WORKER

Environmental and occupational changes, in many cases, result in menstrual difficulty. The milder forms of primary dysmenorrhoea respond well to treatment with sedatives and analgesics of a salicylate nature.

Of these, 'Anadin,' a finely-balanced compound of aspirin, phenacetin and caffeine, is especially well suited to the alleviation of both uterine pain and cephalalgia.

The knowledge that this product is not habit-forming ensures absolute confidence during prolonged administration, should this be necessary

**ANADIN Tablets**



ANADIN LIMITED, 12, CHENIES STREET, LONDON, W.C.1

## ALBUCID SOLUBLE

*First-Aid Dressing*

THIS preparation provides an efficient means of preventing sepsis in burns and wounds by the immediate application of ALBUCID SOLUBLE. It contains soluble sulphacetamide in effective bacteriostatic concentration (6% w/w). It is neutral and hence non-irritant; further, it is non-toxic and promotes healthy granulation. The water-miscible base, in which it is incorporated, renders the dressing easily removable by swabbing or irrigation if a more thorough surgical toilet should later become necessary. The treatment should then be maintained with—

## ALBUCID SOLUBLE

*Burn and Wound Dressing*

THIS preparation is intended for the continued treatment of burns and wounds until complete healing is achieved.

It embodies all the advantages of the First Aid Dressing and contains the same concentration of soluble sulphacetamide. Instead, however, of a water-miscible base, it is incorporated in a neutral ointment base which mechanically regulates absorption. Too rapid dispersal of the sulphacetamide is thus avoided and effective control of sepsis is preserved at the site of injury.

*'Albucid' is the registered name which distinguishes Sulphacetamide of British Schering manufacture.*

LITERATURE AVAILABLE TO INTERESTED MEDICAL PRACTITIONERS ON REQUEST.

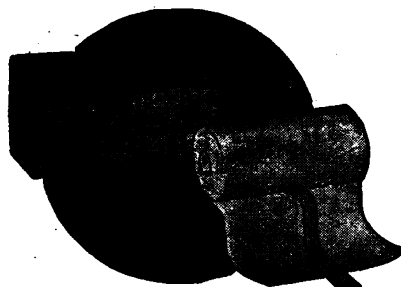


**BRITISH SCHERING LIMITED**

185-190, HIGH HOLBORN, LONDON, W.C.1.

291

## CELLANBAND



A ventilated dressing of the Unna's

Paste type, which will allow the escape of free exudation and thus prevent development of troublesome dermatitis. Indicated in Varicose Ulcers, Phlebitis, Lymphangitis and in certain orthopaedic cases.

**CUXSON, GERRARD & Co. Ltd.**

MANUFACTURING CHEMISTS

**OLDBURY · BIRMINGHAM**

# The new ANTACID



**FREE TO DOCTORS**

Full-size bottle and  
technical literature  
sent on request

**WESTMINSTER LABORATORIES LTD.**  
PENN · BUCKS

# Economy in Disinfectants

## USE OF HYPOCHLORITES RECOMMENDED

In a statement on economy in the use of certain types of disinfectants in short supply the Therapeutic Requirements Committee of the Medical Research Council emphasised the necessity of selecting "those materials which are most readily available." Among the substances recommended to replace those in short supply for special purposes are "hypochlorites."

Milton, the Hypochlorite Antiseptic, has been recommended in recent medical and pharmaceutical literature or in statements by authoritative bodies for many uses including the following—

### *As an antiseptic and therapeutic agent*

In the Envelope Irrigation treatment of wounds, burns and ulcers.

Treatment of simple boils, carbuncles, whitlows and any septic wounds.

Treatment of mustard gas burns.

### *As a general sterilising agent*

For the sterilisation of the new standard Jaconet, Battiste and Artificial Silk Waterproof Dressings.

For the sterilisation of non-metallic sick-room utensils and instruments.

For the emergency sterilisation of water.

For the disinfection of air in operating theatres, hospital wards, air-raid shelters, offices, etc.

Details of references and information with regard to these and other uses of Milton may be obtained from the Medical Dept., Milton Antiseptic Ltd., John Milton House, London, N.7.

# MILTON

**THE STANDARD HYPOCHLORITE**

Milton is the stable brand of electrolytic sodium hypochlorite, standard strength (1%) and low alkalinity.

# ARGOTONE

## NASAL DROPS

Ethical Medical Preparation for  
NASAL THROAT and EYE AFFECTIONS

The main components of ARGOTONE are ARGYROL and NATURAL  
EPHEDRINE made into a stable combination by a special process

ARGOTONE is used on Prescription and Medical Recommendation  
only and no Advertising is ever made to the Public

RONA LABORATORIES LTD. 99, OAKLANDS ROAD, LONDON, N.W.2

# ESOBAN

## OINTMENT EMULSION & CAPSULES FOR DERMATITIS

It has been shown that many skin diseases are accompanied by a deficiency of the unsaturated fatty acids in the body fat and that when this is restored to normal the condition rapidly clears. The ESOBAN treatment provides the essential unsaturated fatty acids necessary for normal skin metabolism together with an antiseptic for the prevention of secondary infection.

### ESOBAN OINTMENT

is of the water in oil emulsion type and contains 66.6 per cent. of maize oil combined with parachlorometaxyleneol or zinc oxide, according to the type of skin complaint to be treated.

#### ESOBAN EMULSION

presents maize oil in an easily assimilable form for oral use. For use in conjunction with the ointment in long-standing or intractable cases.

#### ESOBAN CAPSULES

contain pure maize oil and are indicated where the emulsion is not well tolerated or its administration difficult.

*Literature sent on request*

**SOUTHON LABORATORIES LIMITED**  
MANUFACTURING CHEMISTS,

88, UPPER RICHMOND ROAD, LONDON, S.W.15  
Telephone: PUTNEY 4347

## CELLON SERVICE

FOR NATIONAL WELFARE

Cellon Laboratories, Ltd., are now able to offer the under-mentioned tested preparations for use in the following cases:

### BURNS, ULCERS, etc.

#### OLEO - SULPHONAMIDE (CELLON)

A soothing application for burns, ulcers, and streptococcal infections of the skin, including infantile buttock rashes.

### SCABIES

#### BENZYL BENZOATE 25%-CELLON

Eradicates Scabies within 24 hours.

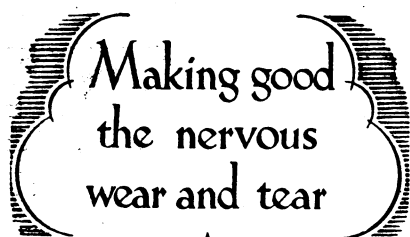
*Further information, samples and prices upon request.*

#### KINGSTON-ON-THAMES

Kingston 1234 (5 lines)

## CELLON LABORATORIES

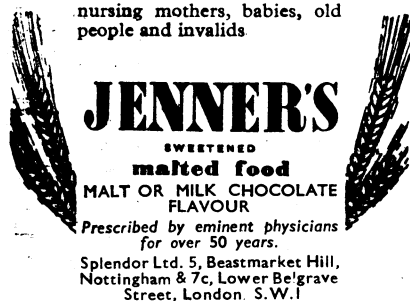
LIMITED



Carefully washed and screened corn is ground to extreme fineness retaining its natural protein and phosphates but eliminating grit and cellulose by sifting through fine silk screens.

Following the processing of the powder in special ovens and a final blending and refining, the preparation of Jenner's Malted Food is complete.

Its fine texture makes it assimilable by weak and nervous digestions. It is consequently a valuable supplementary food for war workers as well as for nursing mothers, babies, old people and invalids



Prescribed by eminent physicians for over 50 years.

Splendor Ltd. 5, Beastmarket Hill, Nottingham & 7c, Lower Belgrave Street, London S.W.1

## HERBERT JENKINS

*Just Out*

# Corner Doctor

by

**GEORGE WONSON  
VANDEGRIFT, M.D.**

A fascinating and human biography about a remarkable physician and his still more remarkable medical methods.

15/- net

★ *In a different vein, INSIDES OUT, by John Mason Brown, is the brilliantly witty saga of an eminent dramatic critic who was obliged to attend his own opening. (7/6 net.)*

HERBERT JENKINS LTD.

## WRIGHT'S PUBLICATIONS

Second Edition. Fully Revised and Enlarged.

### AN ATLAS OF THE COMMONER SKIN DISEASES

By Henry C. G. Semon, M.D., M.R.C.P.

Photography under the Direction of Arnold Moritz, M.B., B.C.

7 x 9½ in. 284 pp. 42s. net; postage 7d.

### THE SURGERY OF THE ALIMENTARY TRACT

By Sir Hugh Devine, M.S., F.R.A.C.S., F.A.C.S.

6 x 9 in. 1,060 pp. 690 Illustrations, many in colour. 63s. net; postage 9d.

Fifth Edition. Fully Revised

### SYNOPSIS OF SURGICAL ANATOMY

By Alexander Lee McGregor, M.Ch., F.R.C.S.

4½ x 7½ in. 664 pp. 648 Illustrations. 25s. net; postage 7d.

Bristol:

JOHN WRIGHT & SONS LTD.

London:

SIMPKIN MARSHALL (1941) LTD.

DOCTORS PRESCRIBE  
THE WORLD-FAMOUS

## SALMON ODY BALL AND SOCKET TRUSS

The ONE granted a Royal Warrant by the late King William IV. Most scientific and reliable yet devised. Unequalled for perfect support, comfort, resiliency and freedom of movement.

Write or call for details. Obtainable only from

**SALMON ODY LTD.**

TRUSSMAKERS FOR 130 YEARS

74, NEW OXFORD STREET,  
LONDON, W.C.1.

Phone: MUSeum 2313

Clinical reports show, and experience has proved, that

**DIMOL**  
PREPARATIONS

combat effectively all bacterial infections.

**DIMOL** controls the intestinal flora.

Samples and literature on request to:

**DIMOL LABORATORIES LTD.,**  
34-40, Ludgate Hill, London, E.C.4

★  
*Argent Protein. Mit.*

# ARVITIN

*Silver Vitellin. B.P.C.*

A BRITISH  
STANDARDIZED PRODUCT

★  
*For Ophthalmic Prescriptions  
where Silver Vitellin  
is Prescribed*

★  
*A sample will be sent free of cost. Please put A.A. on envelope when writing.*

**JOHNSONS**  
Manufacturing Chemists  
HENDON, N.W.4

## PRESCRIBED FOR OVER 40 YEARS SULPHAQUA BATH CHARGES

*In treatment of*

**SKIN DISEASES**

**GOUT, RHEUMATISM, Etc.**

Relieve Pain and Intense Itching  
Soothing and Sedative in Effect

*Literature on request*

**The S. P. CHARGES CO.**

ST. HELENS, LANCs.

Obtainable from all Chemists.

## FINANCE

for the acquisition by

**PAYMENTS OUT-OF-INCOME**  
of

**SURGERY AND OTHER FURNITURE,  
SURGICAL INSTRUMENTS, MEDICAL  
TEXT BOOKS, X-RAY APPARATUS,  
LABORATORY EQUIPMENT.**

The above list is illustrative only. Under its equipment Purchase Plan the company is prepared to assist doctors to acquire ANY article and spread the cost over a period.

**BRITISH MEDICAL FINANCE LTD.**

Tavistock House South, Tavistock Square  
London, W.C.1



LONDON ADDRESS: 1, Stanley House, 103, Marylebone High Street, London, W.1. Tel.: Welbeck 3034. Female fitters in attendance Mondays to Fridays. Orthopaedic Mechanician, Wednesdays only by Appointment.

## CORRECTION PLUS COMFORT

### SALTS' SACRO-ILIAC BELT

quickly relieves pain and discomfort, and rapidly restores the normal relationship of the sacral and iliac bones, incidentally exerting a beneficial effect on the tone of the abdominal viscera. These CORRECTIVE properties are allied to very real COMFORT, so that the patient can resume usual activities with complete confidence. Styles are available for both sexes, and Salts' Corset and Belt Book with its handy Measure/Order forms makes it easy to order, while Salts' unequivocal Guarantee gives full protection to the Doctor as stated therein.



#### Guarantee

"We guarantee to alter exchange or accept the return of any appliance without cost ordered by the Medical Profession, if not found suitable within fourteen days from date of supply."

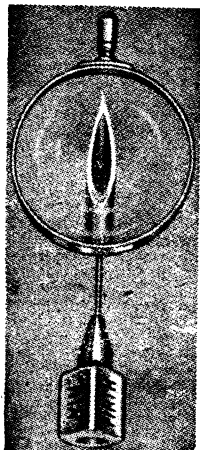
Salt and Son Ltd.

# SALT & SON Ltd.

## BIRMINGHAM 2

Many Practitioners have expressed their opinion in these words:

**"The best Needles I have ever used"**



**Milward's VIM**  
REGD. TRADE MARK

FIRTH BREARLEY STAINLESS STEEL  
HYPODERMIC NEEDLES

A typical appreciation is that of a Surgeon Specialist attached to an important Colonial Government Hospital. He writes: "They are the best I have ever used. I have given instructions to the Medical Store to order them and nothing but them."

Practitioners in all parts of Great Britain and the Empire are insisting on Vim Needles because they stay sharp after many injections, cause the minimum of pain to the patient, and are easy to handle.

PRICES from 7/- per doz. Special quotations for Hospital quantities.  
FREE SAMPLE and full particulars on application.

*Chas. F. Haekray*  
LTD

Sole British & Empire Distributors (except Canada)

The Old Medical School, LEEDS. Tel. 20085  
London Address: 252 Regent Street, W.1  
Tel. Reg 1884

VIM NEEDLES  
Outlast 3 to 5 ordinary steel needles

Always sharp

Less painful injections

No wiring or drying necessary

## VICTOR



## CHOLEVIC

DIAGNOSTIC OPAQUE FOR  
ORAL CHOLECYSTOGRAPHY



Palatable, well tolerated and easily administered, this powdered form of sodium tetraiodophenolphthalein with acid convertible, sweetening and flavouring is ideal for consistently satisfactory delineation of the gall bladder. In convenient 1-dose bottles, 3/- each — less for larger quantities.

**VICTOR X-RAY CORPORATION LTD.**

15-19 Cavendish Place, London, W.1

LANgham 4074

BIRMINGHAM BRISTOL GLASGOW MANCHESTER DUBLIN  
BELFAST EXETER LEEDS SHEFFIELD NOTTINGHAM LIVERPOOL

**NOTICE—Applications for vacancies advertised should, except where otherwise specified, state name, address, age, nationality, qualifications with dates, and be accompanied by copies of three recent testimonials with short statement of experience and appointments held. Unless closing date is stated applications should be sent at once.**

**HIS MAJESTY'S COLONIAL SERVICE.** The Colonial Medical Service. Vacancies for Medical Officers.—The maintenance of an efficient Colonial Medical Service constitutes a vital part of the national war effort, and it is most important that the Service should be assured of an adequate supply of doctors. The Secretary of State for the Colonies therefore invites applications from doctors possessing a medical qualification registrable in the United Kingdom who are British subjects and who are under 35 years of age. Medical Officers are appointed in the first instance for general service, but there are ample opportunities for work in special branches of medicine and surgery, in public health, and in medical research. The normal salary scale is from £600 to between £1,000 to £1,120. There are large numbers of super-scale posts, to which promotion is made on merit and which carry higher salaries. Government quarters, in many cases free of rent, and first-class passages to and from the Colonies, are provided, and an adequate pension scheme is in force. Selected candidates are normally required to attend a course of instruction in Tropical Medicine and Hygiene either before proceeding overseas or during their first period of leave. Further particulars, including the regulations governing admission to the Colonial Medical Service, may be obtained from the *Director of Recruitment (Colonial Service)*, 2, Park Street, London, W.1.

**INDIAN MEDICAL SERVICE.** Recruitment of Women Medical Officers.—The Government of India are prepared to recruit a limited number of women medical officers for service with the Indian Medical Service for the duration of the war. Applicants must be British subjects, of not more than 45 years of age, and those selected will be appointed in the rank of Lieutenants. Antedate of seniority may be granted up to a maximum period of 64 years in respect of resident hospital appointments, higher qualifications, and/or professional experience. The antedate will count for pay and promotion, but, in the case of candidates recruited in this country, higher rank will not be assumed until the date of disembarkation in India. On termination of service, a minimum gratuity is guaranteed to those officers who complete one year of service, viz., Rs. 2,000 to officers whose registrable medical qualification is dated before January 1, 1940, and Rs. 1,000 to those who qualified after that date, plus one month's pay for each further completed year of Army Service. Further particulars regarding rates of pay, etc., may be obtained from the Medical Adviser, India Office, London, S.W.1, or from the Secretary, Military Department, India Office, to whom all inquiries should be addressed.

**METROPOLITAN BOROUGH OF ST. MARYLEBONE. TEMPORARY TUBERCULOSIS OFFICER AND ASSISTANT MEDICAL OFFICER OF HEALTH.**—Applications are invited from registered medical practitioners for the above temporary whole-time appointment during the absence on military service of the present holder at a salary of £800 per annum, plus bonus (at present £33 16s. per annum). Candidates must possess the qualifications for Tuberculosis Officers prescribed by Regulations made by the Minister of Health and be the holder of a Diploma in Public Health. They should also have experience in the work of a Tuberculosis Dispensary with x-ray plant, and in the duties of an Assistant Medical Officer of Health. Applications, stating age, qualifications, and experience, together with copies of recent testimonials (not returnable), must be sent to the undersigned not later than November 12th, 1943. The appointment (determinable by one month's notice on either side) will be subject to the approval of the Minister of Health and the London County Council, to the Council's Superannuation Scheme, staff regulations for the time being in force, and satisfactory medical examination. The Council's Standing Orders provide that canvassing shall disqualify an applicant.—T. J. Wilson, Town Clerk, Town Hall, St. Marylebone, W.1.

**BIRMINGHAM ACCIDENT HOSPITAL AND REHABILITATION CENTRE. RESIDENT SURGICAL OFFICER (B1).**—Applications are invited from registered medical practitioners for the appointment of Resident Surgical Officer (B1), to become vacant on December 1, 1943. Applicants should have held house appointments and had surgical experience. Preference will be given to candidates holding Diploma of F.R.C.S. Suitably qualified R and W practitioners holding B2 appointments are invited to apply. Applications from R practitioners now holding B1 appointments cannot be considered unless they have been rejected by the R.A.M.C. The appointment will be for a period of six months. Salary is at the rate of £300 per annum.

**HOUSE SURGEON (B2).**—Applications are invited from registered medical practitioners, male and female, for the appointment of House Surgeon (B2), to become vacant on December 1, 1943, including R and W practitioners who now hold A posts. The appointment is for a period of six months. The salary is at the rate of £150 per annum, with full residential emoluments.—A. A. MacIver, Secretary, Bath Row, Birmingham, 15.

**COUNTY COUNCIL OF ESSEX AND CORPORATION OF CHINGFORD. TEMPORARY ASSISTANT COUNTY MEDICAL OFFICER AND MEDICAL OFFICER OF HEALTH.**—Applications are invited for the above appointment from persons not eligible for military service. The minimum commencing salary as Assistant County Medical Officer will be at the rate of £400 a year, and the minimum commencing salary as Medical Officer of Health will be at the rate of £400 a year. The total salary of the person appointed will rise, subject to satisfactory service, by annual increments of £25 to a maximum of £900 a year. An allowance at the rate of £78 a year in respect of travelling will also be made to the successful candidate. The amounts of any increments in salary and the travelling allowance will be shared equally by the respective authorities. The successful applicant will, in addition to his other duties, be required to undertake Civil Defence duties in the Borough of Chingford. Applicants must be duly qualified medical men, with experience in Public Health duties, and hold a Diploma of Public Health. Applications must be made on the prescribed form, obtainable from the Clerk of the County Council, accompanied by copies of not more than three recent testimonials, which will not be returned, and should be delivered at the County Hall, Chelmsford, not later than November 11, 1943.—John E. Lightburn, Clerk of the County Council, Geo. E. Malley, Town Clerk, County Hall, Chelmsford.

**COUNTY BOROUGH OF SOUTHEAST-ON-SEA.** Southend Municipal Hospital, Rochford, Essex.—Applications are invited from registered male medical practitioners for the appointment of DEPUTY MEDICAL SUPERINTENDENT (B1) at the Southend Municipal Hospital, Rochford, Essex. Applicants should have held Resident hospital appointments and had medical experience. Preference will be given to candidates holding a higher degree or diploma. The appointment will be for the duration of the war, and terminable within twelve months of the conclusion of hostilities on three months' notice being given on either side. Suitably qualified R practitioners holding B2 appointments are invited to apply. Applications from R practitioners now holding B1 appointments cannot be considered unless they have been rejected by the R.A.M.C. Salary is at the rate of £500 per annum, plus prevailing cost-of-living bonus, and increasing annually by £25 to a maximum of £600, with full residential emoluments, which are valued for superannuation purposes at £150 per annum. The person appointed will be liable to pay superannuation contributions if the provisions of the Local Government Officers' Superannuation Acts are applicable. Application forms, obtainable from the Medical Superintendent, Southend Municipal Hospital, Rochford, Essex, should be returned to him not later than Monday, November 8.—H. J. Worwood, Town Clerk, Town Clerk's Office, Southend-on-Sea.

**COUNTY BOROUGH OF BIRKENHEAD.** Department of the Medical Officer of Health. Birkenhead Municipal Hospital (560 beds). RESIDENT SURGICAL OFFICER (B1).—Applications are invited from registered medical practitioners for the appointment of Resident Surgical Officer at the Birkenhead Municipal Hospital. The appointment is tenable for a period of twelve months. The duties of the Resident Surgical Officer are mainly surgical and obstetrical and preference will be given to candidates who have had surgical and obstetrical experience in a municipal or voluntary hospital. Suitably qualified R and W practitioners now holding B2 appointments may apply. Applications from male R practitioners now holding B1 appointments cannot be considered unless they have been rejected by the R.A.M.C., or for other reasons are not eligible for military service. Alien practitioners will be eligible for appointment. The salary attached to the appointment will be at the rate of £300 per annum, plus war bonus, and the appointment will be subject to the regulations of the Council regarding holidays, sick pay, etc. Forms of application and further particulars relating to the appointment, may be obtained from Dr. D. Morley Mathieson, 9, Hamilton Square, Birkenhead. Canvassing, directly or indirectly, will disqualify an applicant. Applications, endorsed "Resident Medical Officer," should reach the undersigned forthwith.—E. W. Tame, Town Clerk.

**UNIVERSITY OF DURHAM.** King's College, Newcastle-upon-Tyne. Department of Pathology.—Applications are invited from registered medical practitioners of either sex for the full-time joint post of LECTURER in the Department of Pathology of the Medical School, King's College, and ASSISTANT PATHOLOGIST to the Royal Victoria Infirmary, Newcastle-upon-Tyne. Previous experience is essential. The salary of the post is at the rate of £600 per annum. The person appointed will be required to commence duties as soon as possible. Applications, accompanied by the names of not more than three referees, should be submitted on or before Friday, November 12, 1943, to the Professor of Pathology, Medical School, King's College, Newcastle-upon-Tyne, 2, from whom further particulars may be obtained.—G. R. Hanson, Registrar of King's College.

**HASLEMERE URBAN DISTRICT COUNCIL. GUILDFORD RURAL DISTRICT COUNCIL. HAMBLEDON RURAL DISTRICT COUNCIL. TEMPORARY MEDICAL OFFICER OF HEALTH.**—Applications from either sex are invited for the temporary whole-time appointment of a Medical Officer of Health for the Haslemere Urban District Council, Guildford Rural District Council, and Hambledon Rural District Council, at a salary of £900 to £1,000 per annum, according to qualifications and experience, plus a travelling allowance. The appointment will probably be for the period of the war and will be subject to one month's notice on either side. The duties will include the usual public health duties for which a Medical Officer of Health is responsible and also the responsibility for the A.R.P. Casualty Services for the three Councils concerned. The appointment will be subject to the approval of the Ministry of Health. Applicants must not be liable for military service. Applications, endorsed "Temporary Medical Officer," must be delivered to the undersigned not later than Wednesday, November 17, 1943.—Dated this 18th day of October, 1943. E. W. Sellings, Clerk of the Guildford Rural District Council, Millmead House, Guildford.

**CITY OF BIRMINGHAM.** Dudley Road and Selly Oak Hospitals. JUNIOR MEDICAL OFFICERS (A).—Applications are invited from registered medical practitioners, male and female, for appointments as Junior Medical Officers (A), including practitioners within three months of qualification who are liable to service under the National Service Acts. If held by a practitioner who is liable under these Acts the appointments will be for periods of six months; otherwise they will be for twelve months. The salary is at the rate of £200 per annum, plus residential emoluments. Applications, stating age, qualifications, nationality, and experience, accompanied by copies of three recent testimonials, should be addressed to the Medical Officer of Health, Public Health Department, Birmingham, 3, not later than November 3, 1943.

**COUNTY COUNCIL OF THE WEST RIDING OF YORKSHIRE.** Scalebar Park Mental Hospital, Nr. Leeds.—Applications are invited from registered medical practitioners, male and female, for the appointment of TEMPORARY RESIDENT ASSISTANT MEDICAL OFFICER (B1), vacant shortly. Applicants should have had experience in a mental hospital. Salary £500 per annum, plus board, residence, &c., valued at £120 per annum. Suitably qualified R and W practitioners holding B2 appointments, also R practitioners holding B1 appointments and rejected by the R.A.M.C., may apply. Married quarters are not provided. Forms of application may be obtained from the undersigned, by whom they must be received not later than November 16, 1943.—Bernard Kenyon, Clerk to the Visiting Committee, County Hall, Wakefield.

**NORTHUMBERLAND COUNTY COUNCIL.** Wooley Sanatorium, Near Hexham. ASSISTANT MEDICAL OFFICER (B1).—Applications are invited from registered medical practitioners for the appointment of Temporary Assistant Medical Officer (B1) at the above Sanatorium (184 beds). Suitably qualified R or W practitioners holding B2 appointments are invited to apply. Applications from R practitioners now holding B1 appointments cannot be considered unless they have been rejected by the R.A.M.C. Salary is at the rate of £350 per annum, with full residential emoluments. Applications should be sent to the undersigned at once.—J. B. Tilley, County Medical Officer, County Hall, Newcastle-upon-Tyne, 1.

**IPSWICH COUNTY BOROUGH COUNCIL.** Borough General Hospital. (Normal beds, 252.)—Applications are invited from registered medical practitioners for the appointment of RESIDENT SURGICAL OFFICER (B1), now vacant. Applicants should have held house appointments and had surgical experience. Preference will be given to candidates holding diploma of F.R.C.S. Suitably qualified R and W practitioners holding B2 appointments are invited to apply. Applications from R practitioners now holding B1 appointments cannot be considered unless they have been rejected by the R.A.M.C. Salary is at the rate of £500 per annum, with full residential emoluments, and the appointment is subject to one month's notice on either side. Applications should be sent at once to the Medical Officer of Health, Elm Street, Ipswich.—A. Moffat, Town Clerk, Town Hall, Ipswich.

**NORWICH CITY COUNCIL.** Woodlands Hospital (311 beds). ASSISTANT RESIDENT MEDICAL OFFICER (B2).—Applications are invited from registered medical practitioners, male and female, for the appointment of Assistant Medical Officer (B2), vacant now, including R and W practitioners who now hold A posts. If held by an R or W practitioner the appointment will be limited to six months, otherwise it will be for a period of one year. The salary is at the rate £250 per annum, with full residential emoluments. Further particulars of appointment to be obtained from the Senior Medical Officer, Woodlands Hospital, Blowthorpe Road, Norwich, and to whom applications should be sent.—Bernard D. Storey, Town Clerk, County Hall, Norwich.



**IMPORTANT—All applicants should read the notice about qualifications required, etc., printed at the top of page 14**

**BOROUGH OF EALING. TEMPORARY ASSISTANT MEDICAL OFFICER OF HEALTH.**—Applications are invited from duly qualified medical practitioners for the above position. A candidate must have had at least 3 years' experience in the practice of the profession. The person appointed will be required to carry out medical inspection of school children and child welfare work and perform such other duties as may be allotted as Assistant to the Medical Officer of Health and the School Medical Officer. The person appointed will be required to devote the whole time to the duties and will not be allowed to engage in private practice. The salary will be at the rate of £600 per annum, rising by £25 per annum to £700, plus bonus amounting to £33 16s. per annum. Copies of the application form and terms of appointment can be obtained from Dr. Thomas Orr, Medical Officer of Health, Town Hall, Ealing, W.5, to whom application, accompanied by copies of not more than three recent testimonials, must be delivered not later than November 11, 1943.—R. H. Wanklyn, Town Clerk, Town Hall, Ealing, W.5.

**COUNTY BOROUGH OF MIDDLESBROUGH.** Middlesbrough General Hospital.—Applications are invited from registered medical practitioners for the appointment of **ASSISTANT RESIDENT MEDICAL OFFICER (B2)**. The salary is at the rate of £270 per annum, together with full residential emoluments. In addition to hospital duties the successful candidate may be required to undertake relief or holiday duties for other whole-time members of the Corporation Medical Staff. The General Hospital contains 353 beds and is a training school for nurses. The appointment is subject to the rules and regulations of the Middlesbrough Corporation and the successful candidate will be required to pass satisfactorily a medical examination. R or W practitioners who now hold A posts may apply, when the appointment will be limited to six months, otherwise it will be for a period of twelve months. Applications, stating age, qualifications, nationality, and particulars of present appointment, and experience, accompanied by copies of three recent testimonials, to be sent to the Medical Officer of Health, Municipal Buildings, Middlesbrough, not later than Tuesday, November 2, 1943.—Preston Kitchen, Town Clerk, Municipal Buildings, Middlesbrough.

**PRINCESS ELIZABETH ORTHOPAEDIC HOSPITAL.** Buckenell Bore, Exeter. (E.M.S. Fracture and Orthopaedic Centre 1A, 150 beds with annexe.)—Applications are invited from registered medical practitioners, including practitioners within three months of qualification and liable under the National Service Acts, for the post of **HOUSE SURGEON (A)**. Salary £200 per annum, with board, residence, and laundry. The appointment is for six months. Applications to P. Melhuish, Secretary.

**NEWARK TOWN AND DISTRICT HOSPITAL.** (70 normal beds.)—Applications are invited from registered medical practitioners, male and female, for the appointment of a **HOUSE SURGEON (A)**, now vacant, including practitioners within three months of qualification who are liable to service under the National Service Acts. If held by a practitioner who is liable under these Acts, appointment will be for a period of six months. Salary is at the rate of £200 per annum, with full residential emoluments.—B. C. Dion, Secretary-Supt.

**NOTTINGHAM GENERAL HOSPITAL.**—Applications are invited from registered medical practitioners, male and female, for the appointment of a **HOUSE SURGEON (A)**, including practitioners within three months of qualification who are liable to service under the National Service Acts. If held by a practitioner who is liable under these Acts, appointment will be for a period of six months. Salary is at the rate of £200 per annum, with full residential emoluments. Applications to be addressed to the undersigned.—Henry M. Stanley, House Governor and Secretary.

**RUNWELL EMERGENCY HOSPITAL.** Near Wickford, Essex. (170 beds.)—Applications are invited from registered medical practitioners, male and female, for the appointment of a **HOUSE SURGEON (A)**, now vacant, including practitioners within three months of qualification who are liable to service under the National Service Acts. If held by a practitioner who is liable under these Acts, appointment will be for a period of six months, otherwise it will not exceed one year. Salary is at the rate of £200 per annum, with full residential emoluments. Apply immediately to Medical Supt.

**SALISBURY GENERAL INFIRMARY**—(Voluntary Hospital, 225 beds.)—Applications are invited from registered medical practitioners, male and female, for the appointment of a **HOUSE SURGEON (A)**, now vacant, including practitioners within three months of qualification who are liable to service under the National Service Acts. If held by a practitioner who is liable under these Acts, appointment will be for a period of six months. Salary is at the rate of £150 per annum, with full residential emoluments. Applications to be sent at once to the undersigned.—John Williams, Supt. and Secretary.

**CITY OF LIVERPOOL. JUNIOR MEDICAL PATHOLOGIST.**—Applications are invited for the appointment of a full-time Junior Medical Pathologist at the Alder Hey Emergency Hospital (1,316 beds), which also deals with material from the Broadgreen Emergency Hospital (700 beds). Salary at the rate of £650 per annum (non-resident), together with a cost-of-living bonus amounting at the present time to £24 per annum. Any fees received in connexion with the appointment to be handed over to the City Council. Candidates must be fully qualified and registered, must have specialized in pathology and have had experience in a recognized pathological department. The officer appointed will be responsible for conducting the work of the Laboratory under the general supervision of the pathologist of the Southern Group of Hospitals and will be required to co-operate generally with the medical staffs so far as this particular service is concerned. The appointment will be made in accordance with the Standing Orders of the City Council and will be determinable by three months' notice on either side. Applications, stating whether R practitioner, and whether liable for military service, age, nationality, qualifications with dates, experience, details of previous appointments, and accompanied by copies of three testimonials, should be endorsed "Junior Medical Pathologist," and sent to the undersigned not later than 10 a.m. Tuesday, November 9, 1943.—W. H. Baines, Town Clerk, Municipal Buildings, Liverpool, 2.

**CITY OF PLYMOUTH.** City General Hospital. (320 beds.)—Applications are invited from duly qualified and registered medical practitioners, male and female, for the post of **ASSISTANT MEDICAL OFFICER (B2)**, including R and W practitioners who now hold A posts. If held by an R or a W practitioner, the appointment will be limited to six months, otherwise it will be renewable for a further period of six months, terminable by one month's notice on either side. Salary will be at the rate of £300 per annum, plus a war bonus, with full residential emoluments. All fees received by the Officer must be refunded to the Council. The applicant should have had some previous experience, and the duties will be mainly in the medical side of the hospital. Further details may be obtained from the Medical Superintendent of the City Hospital, Plymouth. Applications should be sent to the undersigned as soon as possible.—T. Peirson, Medical Officer of Health, Seven Trees, Lipson Road, Plymouth.

**CITY GENERAL HOSPITAL, Gloucester.** (560 beds, including 400 E.M.S. There are a Fracture "A" Department, Plastic and Facio-Maxillary Surgery Department, general medical, and surgical work, etc., at this hospital.) Vacancies exist for two **JUNIOR MEDICAL OFFICERS (B2)**. Applications from male and female registered practitioners are invited, including R and W practitioners who now hold A posts. If held by R or W practitioners, appointment will be limited to six months, otherwise it will not exceed one year. Salary £350, with full residential emoluments. Applicants must have had six months' postgraduate experience at the time of taking up the appointment. Applications, stating when duties could be taken up, should be sent to Charles Cookson, Medical Officer of Health, Greyfriars, Gloucester.

**DURHAM COUNTY HOSPITAL.** (110 beds.)—Applications are invited from registered medical practitioners, male and female, for the appointment of **RESIDENT HOUSE SURGEON (B2)**, now vacant, including R and W practitioners who now hold A posts. If held by an R or W practitioner the appointment will be limited to six months, otherwise it may be extended. Salary £250 per annum, with full residential emoluments. Applications should be sent forthwith to the undersigned.—T. E. Jarvis, Acting Secretary.

**SWANSEA GENERAL AND EYE HOSPITAL.**—Applications are invited from registered medical practitioners, male and female, for the post of **HOUSE PHYSICIAN (A)**, now vacant, including practitioners within three months of qualification who are liable to service under the National Service Acts 1939-41. If held by a practitioner under the above Acts the appointment will be for a period of six months. The successful candidate will be required to reside at the Hospital Annexe (120 beds), be responsible for the care of the patients therein, including both medical and post-operative surgical cases, and attend medical out-patient clinics at the Parent Hospital. Salary is at the rate of £150 per annum, with full residential emoluments. Applications should be forwarded to the undersigned.—O. C. Howells, Secretary-Superintendent.

**SWANSEA GENERAL AND EYE HOSPITAL.**—Applications are invited from registered medical practitioners, male and female, for the appointment of a **HOUSE SURGEON (A)**, vacant about November 22, including practitioners within three months of qualification who are liable under the National Service Acts. If held by a practitioner who is liable under these Acts, appointment will be for a period of six months. Salary is at the rate of £150 per annum, with full residential emoluments. Applications should be forwarded to the undersigned.—O. C. Howells, Secretary-Superintendent.

**HIS MAJESTY'S COLONIAL SERVICE.** Colonial Medical Service.—A vacancy exists for a **PATHOLOGIST** at the MULAGO MEDICAL SCHOOL, UGANDA. Candidates must be British subjects of under 35 years of age, possess a medical qualification registrable in the United Kingdom and have had experience in teaching pathology and forensic medicine at university standard. The salary is on the scale £600 per annum, rising by annual increments of £30 to £840 per annum, then by annual increments of £40 to £1,000 per annum. An initial salary above the minimum may be offered. Free quarters or an allowance in lieu are provided. Free passages are provided, but it is unlikely that the selected officer's wife could join her husband in Uganda during the war. The appointment is pensionable, but the selected candidate will be required to serve for two years on probation. Further particulars and forms of application may be obtained from the Director of Recruitment (Colonial Service), 2, Park Street, London, W.1.

**BIRMINGHAM UNITED HOSPITAL.** The General Hospital. The Queen Elizabeth Hospital. (Also incorporating the Queen's Hospital 1840-1941.)—Applications are invited for the post of **RESIDENT ANAESTHETIC REGISTRAR (B1)**, now vacant. Applicants should possess the Diploma in Anaesthetics, or should be in a position to take the examination. Suitably qualified R and W practitioners holding B2 appointments are invited to apply. Applications from R practitioners now holding B1 appointments cannot be considered unless they have been rejected by the R.A.M.C. Salary is at the rate of £350 per annum. Applications should be sent to the undersigned at once.—G. Hurford, Secretary, Birmingham United Hospital, The Queen Elizabeth Hospital, Birmingham, 15.

**THE ROYAL HOSPITAL, WOLVERHAMPTON.** (Incorporated under Royal Charter.) (310 beds.)—Applications are invited from registered medical practitioners for the appointment of a **HOUSE SURGEON (A)**, vacant now, including practitioners within three months of qualification who are liable to service under the National Service Acts. If held by a practitioner who is liable under these Acts, appointment will be for a period of six months. Salary is at the rate of £100 per annum, with full residential emoluments.

Applications are invited from registered medical practitioners, male or female, for the appointment of **RESIDENT ANAESTHETIST (B2)**, vacant now, including R and W practitioners who now hold A posts. If held by an R or a W practitioner, the appointment will be limited to six months. Otherwise it will be for a period of twelve months. The salary is at the rate of £200 per annum, with full residential emoluments.—W. Cockburn, House Governor.

**THE HOSPITAL FOR SICK CHILDREN,** Great Ormond Street, London, W.C.1.—The Board of Management invite applications for the following temporary appointments to the Visiting Staff: **ONE ASSISTANT SURGEON; ONE ASSISTANT AURAL SURGEON.** Candidates should hold the Fellowship of the Royal College of Surgeons of England. The latest date for receiving applications is Wednesday, November 17, 1943. Forms of application, with further particulars, are obtainable from the undersigned.—H. F. Rutherford, Secretary.

**VICTORIA HOSPITAL, Accrington.** **HOUSE SURGEON (B2).**—Applications are invited from registered medical practitioners, male, for the appointment of House Surgeon, including R and W practitioners who now hold A posts. If held by an R or W practitioner, the appointment will be limited to six months. The salary is at the rate of £200 per annum, with full residential emoluments. Apply, with copies of two testimonials, to Hon. Sec.

**VICTORIA HOSPITAL, Blackpool** (normal complement 200 beds, wartime complement 630 beds.)—Applications are invited from registered medical practitioners, female, for the appointment of **RESIDENT ANAESTHETIST (A)**, vacant now, including practitioners within three months of qualification who are liable to service under the National Service Acts. The appointment is for a period of six months. Salary is at the rate of £300 per annum, with full residential emoluments. Applications, stating age, qualifications with dates, nationality, and present post, and accompanied by copies of three recent testimonials, should be sent to the undersigned immediately.—Walter R. Smith, General Superintendent.

**VICTORIA HOSPITAL, Burnley.** (169 beds.)—Applications are invited from registered medical practitioners, male or female, for the appointments of **HOUSE SURGEON (A)** and **HOUSE PHYSICIAN (A)** (both posts now vacant), including practitioners within three months of qualification who are liable under the National Service Acts. If held by a practitioner who is liable under these Acts, appointment will be for a period of six months. Salary is at the rate of £150 per annum, with full residential emoluments. Applications, stating age, qualifications with dates, nationality, with copies of recent testimonials, should be sent to the undersigned immediately.—J. E. Wheatcroft, Secretary.



**IMPORTANT—All applicants should read the notice about qualifications required, etc., printed at the top of page 14**

**COUNTY BOROUGH OF PRESTON.** Sharoe Green Hospital. (250 beds.)—Applications are invited from registered medical practitioners, female, for the appointment of **JUNIOR RESIDENT MEDICAL OFFICER (A)**, now vacant, including W practitioners within three months of qualification. If held by a W practitioner, appointment will be for a period of six months, otherwise it will not exceed one year. Salary is at the rate of £200 per annum, with full residential emoluments. Applications to the Medical Superintendent, Sharoe Green Hospital, Fulwood, Preston.

**CHRISTIE HOSPITAL AND HOLT RADIUM INSTITUTE.** Withington, Manchester, 20.—Applications are invited for the post of **WHOLE-TIME PATHOLOGIST** at the above Hospital. The Pathologist will be required to undertake the routine Clinical Pathology and must have had a good experience of Pathological Histology. Starting salary up to £750 per annum, dependent upon qualifications and experience. Applications must contain full particulars of experience and the names and addresses of three referees, and should be forwarded to the undersigned not later than November 13, 1943.—Percy N. Glass, General Superintendent.

**MEMORIAL HOSPITAL.** Shooters Hill, London, S.E.18. General Hospital. (137 beds.)—Applications are invited from male registered medical practitioners for the appointment as **JUNIOR RESIDENT MEDICAL OFFICER (A)**. The appointment will be for six months with effect from December 1, 1943. Salary £175 p.a., with full residential emoluments. Practitioners within three months of qualification and liable under the National Service Acts may apply. Application should be made on the prescribed form, obtainable from the undersigned, and sent in to reach him not later than November 15, 1943.—R. S. G. Hutchings, Sec.

**MANCHESTER ROYAL INFIRMARY.**—Applications are invited from registered medical practitioners, male and female, including practitioners within three months of qualification who are liable to service under the National Service Acts, for the appointment of **HOUSE SURGEON** to the Neurosurgical Department (A), now vacant. The appointment is for six months, with salary at the rate of £75 per annum, and the usual residential emoluments. Applications to be sent at once to the Chairman of the Medical Board.—By Order, F. J. Cable, General Superintendent and Secretary.

**NORTHAMPTON GENERAL HOSPITAL** (408 beds.)—Applications are invited immediately from registered medical practitioners, male or female, for the post of **GYNÆCOLOGICAL AND OBSTETRICAL HOUSE SURGEON (A)**. Salary at the rate of £150 per annum, with full residential emoluments. Practitioners within three months of qualification and liable under the National Service Acts may apply, when the appointment will be for a period of six months. Applications should be sent as soon as possible to Gordon S. Sturtridge, Superintendent.

**NORTH CAMBRIDGESHIRE HOSPITAL.** Wisbech.—Applications are invited from registered medical practitioners, including practitioners within three months of qualification who are liable to service under the National Service Acts, for appointment of **HOUSE SURGEON (A)**, now vacant. Appointment will be for period of six months. Salary £200 to £250, with full residential emoluments. Applications should be sent to the Secretary.

**NORFOLK AND NORWICH HOSPITAL.** Norwich.—Applications are invited from registered medical practitioners for the appointment of a **HOUSE SURGEON (A)**, including practitioners within three months of qualification who are liable to service under the National Service Acts. If held by a practitioner who is liable under these Acts, appointment will be for a period of six months. Salary is at the rate of £170 per annum, with full residential emoluments. Applications to be addressed to the undersigned.—Frank Inch, House Governor and Secretary.

**NEW SUSSEX HOSPITAL FOR WOMEN AND CHILDREN.** Windlesham Road, Brighton.—Applications are invited from registered medical practitioners, female, including W practitioners who now hold A posts, when appointment will be limited to six months, for the appointment of a **HOUSE SURGEON (B2)**, to commence duties as soon as possible. Salary £150 per annum, with full residential emoluments. Applications, stating age, qualification, with dates, and nationality, and accompanied by copies of three recent testimonials, should be sent to the undersigned.—Percy F. Spooner, Secretary.

**NOTTINGHAM GENERAL HOSPITAL.** (585 beds.)—Applications are invited from registered medical practitioners, male and female, for the appointment of a **HOUSE PHYSICIAN (A)**, including practitioners within three months of qualification who are liable to service under the National Service Acts. If held by a practitioner who is liable under these Acts, appointment will be for a period of six months. Duties to commence about Nov. 5. Salary at the rate of £200 per annum, with full residential emoluments. Applications to be addressed to the undersigned.—Henry M. Stanley, House Governor and Secretary.

**CITY OF BIRMINGHAM.** Bacteriological Laboratories.—Applications are invited from trained technicians, male or female, for a temporary appointment in the above laboratories. Candidates should have had good experience in bacteriological and serological procedures, and should possess the Diploma of the Institute of Medical Laboratory Technology or other recognized qualification. Salary (Grade B) £260, rising by £10 annually to £350, according to experience, plus war bonus. The appointment will in the first place be for a period of two years, but during that period subject to one month's notice by either side. Applications should be received not later than November 13, 1943, and should be addressed to Dr. F. C. Lewis, City Bacteriological Laboratories, 150 Great Charles Street, Birmingham, 3.

**RUNWELL HOSPITAL FOR NERVOUS AND MENTAL DISORDERS.** Wickford, Essex. (1,010 beds.) **TEMPORARY ASSISTANT MEDICAL OFFICER (B1)** required, male or female. Knowledge of psychiatry not essential though desirable. Salary £367 10s., rising by £26 5s. to £420, and thence by £25 to £470 per annum, plus £50 for D.P.M., with full residential emoluments. Suitably qualified R and W practitioners holding B2 appointments are invited to apply. Applications from R practitioners now holding B1 appointments cannot be considered unless they have been rejected by the R.A.M.C. Applications to be sent as soon as possible to the Physician Superintendent.

**ROYAL VICTORIA INFIRMARY.** Newcastle-upon-Tyne. **SURGICAL REGISTRAR (B1)**. (Open appointment.)—Applications are invited from registered medical practitioners, male and female, for the appointment of Surgical Registrar. Applicants should have held house appointments and preference will be given to candidates holding the Diploma of F.R.C.S. (England). Suitably qualified R and W practitioners holding B2 appointments are invited to apply. Applications from R practitioners now holding B1 posts cannot be considered unless they have been rejected by the R.A.M.C. Suitable women practitioners will be eligible for appointment. Salary is at the rate of £300 per annum, non-resident. Applications should be sent to the undersigned at once.—A. W. Sanderson, House Governor.

**ROYAL INFIRMARY.** Preston. **HOUSE SURGEON (A)** Eye and Ear Department.—Applications are invited from registered medical practitioners, male or female, for the appointment of House Surgeon (A) to the Eye and Ear, nose and Throat Department (recognized for D.O.M.S. and D.L.O. examinations), including practitioners within three months of qualification who are liable for service under the National Service Acts. If held by a practitioner who is liable under these Acts the appointment will be for six months. Salary £150 per annum, with full residential emoluments. Applications should be sent to the undersigned forthwith.—John Gibson, Superintendent, Royal Infirmary, Preston.

**ROTHERHAM HOSPITAL.** General Voluntary Hospital. (140 beds.)—Applications are invited from registered medical practitioners for the appointment of **HOUSE PHYSICIAN (A)**, vacant November 22. Salary £200 per annum (with full residential emoluments). Practitioners within three months of qualification, and liable under the National Service Acts may also apply, when the appointment will be for six months. Applications should be sent at once to the Secretary-Supt.

**ROYAL SHEFFIELD INFIRMARY AND HOSPITAL.**—Applications are invited for the post of **BIOCHEMIST**. The appointment is a temporary one and is open to those not medically qualified. The salary will be from £300 to £400 per annum, non-resident, according to experience, and the selected candidate should be prepared to start without delay. Applications to Secretary at the Royal Hospital, West Street, Sheffield, 1.

**ST. MARY'S HOSPITAL.** W.2. **THIRD ASSISTANT PATHOLOGIST (B1)**.—Applications for the above post are invited from R and W practitioners holding B2 appointments. Applications from R practitioners now holding B1 appointments cannot be considered unless they have been rejected by the R.A.M.C. The appointment is for a period of twelve months (the holder to be eligible for re-election for a second period of twelve months), as from a date to be arranged, at a salary of £350 p.a. (for the period of the war). Applications, stating nationality, date of birth, permanent address, qualifications with dates and appointments held, together with copies of not more than three testimonials, should reach the undersigned on or before Monday, November 15.—E. W. Stockwell, Secretary.

**ST. ANDREW'S (EMERGENCY) HOSPITAL.** Thorpe, Norwich. **RESIDENT HOUSE PHYSICIAN (B2)**.—Applications are invited from registered medical practitioners, male only, for the appointment of Resident House Physician (B2), to become vacant immediately, including R and W practitioners who now hold A posts. The appointment will be for a period of six months. The salary is at the rate of £200 per annum, with full residential emoluments. Applications to the Medical Superintendent.

**EAST SUFFOLK AND IPSWICH HOSPITAL.** Ipswich (400 beds, 7 Residents).—Applications are invited for the following posts: **HOUSE SURGEON (A)**, vacant December 9, from registered medical practitioners, including those within three months of qualification who are liable for service under the National Service Acts. **HOUSE SURGEON (B2)**, vacant November 15, from registered medical practitioners, including R practitioners who now hold A posts. Appointments will be for six months. Salary for both posts is at the rate of £175 per annum, with full residential emoluments.—Arthur Griffiths, Secretary, the Hospital, Ipswich.

**KING EDWARD MEMORIAL HOSPITAL.** Ealing, W.13.—Applications are invited from registered medical practitioners for the appointment of **CASUALTY OFFICER AND HOUSE SURGEON** (Gynaecological, etc.) (A), to become vacant immediately, including practitioners within three months of qualification who are liable to service under the National Service Acts. Six months' appointment. Salary at the rate of £150 per annum, with full residential emoluments. Applications should be sent to the undersigned immediately.—R. A. Mickelwright, House Governor.

**THE ROYAL DENTAL HOSPITAL OF LONDON.** 32, Leicester Square, W.C.2.—Applications are invited from Dental Surgeons who also hold medical qualifications for the appointment of **MEDICAL REGISTRAR**, to become vacant on January 1, 1944. The appointment is for one year with a maximum period of three years (subject to National Service requirements). Salary £500 rising to £600 per annum. Private practice not permitted. Applications (twenty-five copies), stating age, nationality, qualifications with dates, experience and details of previous appointments, and accompanied by twenty-five copies of three recent testimonials, should be sent to the undersigned not later than Monday, November 15.—W. J. Ickeringill, Sec-Superintendent.

**THE SKIN HOSPITAL.** John Bright Street, Birmingham, 1.—Applications are invited from registered medical practitioners, male or female, for appointment as **RESIDENT HOUSE PHYSICIAN (A)**, to become vacant on November 10, including practitioners within three months of qualification who are liable to service under the National Service Acts. If held by a practitioner who is liable under these Acts, appointment will be for a period of six months; otherwise, at the expiration of six months, the question of a further reappointment might be considered. Salary is at the rate of £150 per annum, with full residential emoluments. Applications, with full particulars, as soon as possible to the undersigned.—T. E. Murtagh, House Governor and Secretary.

**THE PRINCESS MARY MATERNITY HOSPITAL.** Jubilee Road, Newcastle-upon-Tyne, 1. (90 beds.)—Applications are invited from registered medical practitioners, male or female, for the appointment of **RESIDENT OBSTETRIC OFFICER (B1)**, tenable for one year in the first instance and renewable annually for a maximum period of three years. Salary £150-£250 per annum, according to experience, together with full residential emoluments. R practitioners holding B2 posts may also apply. Applications from R practitioners now holding B1 appointments cannot be considered unless they have been rejected by the R.A.M.C. The appointment becomes vacant on December 1, 1943, and applications should be sent to the undersigned not later than Saturday, November 6.—R. S. Johnson, House Governor.

**THE ROYAL LIVERPOOL CHILDREN'S HOSPITAL.** Myrtle Street, Liverpool, 7.—Applications are invited from registered medical practitioners, male and female, for the appointment of **RESIDENT CASUALTY OFFICER (B2)**, now vacant, including R and W practitioners who now hold A posts. If held by an R or a W practitioner the appointment will be limited to six months. The salary is at the rate of £250 per annum, with full residential emoluments. Applications, accompanied by copies of three testimonials and the name of a referee, should be sent to the Secretary of the Hospital by an early post.

**THE HOSPITAL FOR SICK CHILDREN.** Newcastle-upon-Tyne.—Applications are invited from registered medical practitioners, male and female, for the appointment of **HOUSE SURGEON (A)**, now vacant, including practitioners within three months of qualification who are liable to service under the National Service Acts. The appointment will be for a period of six months. Salary is at the rate of £150 per annum, with full residential emoluments. Applications to be sent to J. B. Cairncross, House Governor and Secretary.

**THE HOSPITAL FOR WOMEN.** Soho Square, W.1.—Applications are invited from fully qualified men and women, including R and W practitioners who now hold A posts, for the combined post of **RESIDENT MEDICAL OFFICER (B2)**, and **MEDICAL OFFICER** to the first aid post, for the period December 1, 1943, to May 31, 1944. If held by an R or a W practitioner appointment will be limited to six months. Salary approximately £150 per annum, with full board and lodging. Applications to reach the undersigned not later than Nov. 12, 1943.—D. C. Emery, Secretary.

**IMPORTANT—All applicants should read the notice about qualifications required, etc., printed at the top of page 14**

**BRADFORD ROYAL INFIRMARY.—RESIDENT MEDICAL OFFICER AND ASSISTANT PATHOLOGIST (B1).** Male, single, required on January 1, 1944. Suitably qualified R practitioners holding B2 appointments are invited to apply. Applications from R practitioners now holding B1 appointments cannot be considered unless they have been rejected by the R.A.M.C. Twelve months' appointment. Salary £250 per annum, with board, residence, and laundry. There are 115 medical beds and two House Physicians. The successful applicant will be required to act as Assistant to the Pathologist. Applications, stating age, nationality, qualifications, and previous experience, with copies of not more than three recent testimonials, should be received by the undersigned not later than November 9, 1943.—H. Trusson, House Governor and Secretary.

**CEFN COED HOSPITAL, Swansea.** Swansea County Borough Mental Hospital. (600 beds.)—Required. **TEMPORARY (War-time) DEPUTY MEDICAL SUPERINTENDENT (B1),** male or female. Age not to exceed sixty years. Salary £620 per annum, with apartments, board, laundry, etc., valued at £130 per annum. Previous general psychiatric experience essential, and experience of modern forms of treatment. Suitably qualified R and W practitioners holding B2 appointments, also R practitioners holding B1 appointments and rejected by the R.A.M.C. may apply. Applications from those who have already retired, or are about to retire, on pension from a public mental hospital, will be favourably considered. Applications, with names of persons to whom reference may be made, should be sent to the Medical Superintendent as soon as possible.

**COVENTRY AND WARWICKSHIRE HOSPITAL. RESIDENT SURGICAL OFFICER (B1).**—The post of Resident Surgical Officer having become vacant owing to the present holder having obtained another and more senior hospital appointment, applications are invited for this post, which is vacant now. Applicants should have held house appointments and had surgical experience. Preference will be given to candidates holding Diploma of F.R.C.S. Applications from R practitioners now holding B1 posts cannot be considered unless they have been rejected by the R.A.M.C. Suitably qualified R and W practitioners who now hold B2 posts may apply. Salary not less than £350 per annum, according to experience and qualifications, together with full residential emoluments. Applications, stating age, nationality, qualifications with dates, experience, and details of previous appointments, and accompanied by copies of three recent testimonials, should be sent to the House Governor and Secretary, Coventry and Warwickshire Hospital, Coventry.

**EVELINA HOSPITAL FOR SICK CHILDREN, London, S.E.1.**—Applications are invited from registered medical practitioners, male and female, for the appointment of **CASUALTY AND OUTPATIENT OFFICER (A),** vacant on December 1. Salary £150 p.a. Practitioners within three months of qualification and liable under the National Service Acts may also apply, when appointment will be for a period of six months. Applications, stating age, qualifications with dates, and previous experience, accompanied by copies of recent testimonials, to be sent to the undersigned by first post on Friday, November 5.—W. H. Sidnell, House Governor.

**WEIR HOSPITAL, Weir Road, Balham, S.W.12.**—Applications are invited from registered medical practitioners, female, including W practitioners who now hold A posts, for the appointment of a **RESIDENT HOUSE SURGEON (B2),** to be vacant at the end of November. If held by a practitioner who is liable under the National Service Acts, appointment will be limited to six months. Salary is at the rate of £200 per annum, with full residential emoluments. Applications should be sent to the Hon. Secretary-Superintendent.

**YORK COUNTY HOSPITAL. (222 beds.)**—Applications are invited from registered medical practitioners, male and female, including R and W practitioners who now hold A posts for the appointment as **ORTHOPAEDIC HOUSE SURGEON AND CASUALTY OFFICER (B2).** If held by an R or a W practitioner, appointment will be limited to six months. Salary is at the rate of £175 per annum, with full residential emoluments. Applications to be sent to the undersigned by November 3, 1943.—J. R. Mackrill, Secretary.

## IMPORTANT NOTICE

### APPOINTMENTS

(a) **British Isles.**—Medical practitioners are requested not to apply for any appointment referred to below without first having communicated with the Secretary to the British Medical Association, B.M.A. House, Tavistock Square, W.C.1 (in the case of Scottish appointments, with the Scottish Secretary, 7, Drumsheugh Gardens, Edinburgh).

### CONTRACT PRACTICE

**ABERTYSSWG MEDICAL AID SOCIETY.—**(Medical Officer.)

**LLWYNPIA, CLYDACH VALE, PEN-Y-GRAG, GLAMORGAN.—**(Workmen's Medical Scheme.)

**MID-RHONDDA MEDICAL AID SOCIETY.—**(Assistant Medical Officer.)

**NEATH AND DISTRICT.—**(Medical Aid Association.)

**OAKDALE, MON.—**(Medical Officer for Medical Aid Association.)

**OGMORE VALLEY, GLAMORGAN.—**(Wyndham Colliery Medical Aid Society.) (Workmen's Medical Scheme.)

### PUBLIC ASSISTANCE

**CITY AND COUNTY OF BRISTOL: PUBLIC ASSISTANCE COMMITTEE.—**(District Medical Officer.)

**COUNTY BOROUGH OF BARROW-IN-FURNESS.—**(District Medical Officer.)

By Order of the Council.

G. C. ANDERSON,  
Secretary.

October 26, 1943.

**BRADFORD ROYAL INFIRMARY.**—Applications are invited from registered medical practitioners, male, single, for the appointment of **HOUSE PHYSICIAN (A),** vacant on December 1, 1943. Six months' appointment. Practitioners within three months of qualification and liable under the National Service Acts may also apply. Salary £150 per annum, with full residential emoluments. There are 345 beds, and 8 resident Officers. Applications, stating age, nationality, qualifications, and previous experience, with copies of three recent testimonials, should be sent immediately to H. Trusson, House Governor and Secretary.

**GENERAL HOSPITAL, Nottingham.** Ear, Nose and Throat Department (40 beds) and large Out-patient Department.—Applications are invited from registered medical practitioners, male and female, for the appointment of a **HOUSE SURGEON (A),** for the above Department, including practitioners within three months of qualification who are liable to service under the National Service Acts. If held by a practitioner who is liable under these Acts, appointment will be for a period of six months. Salary at the rate of £200 per annum, with full residential emoluments. Applications to be addressed to the undersigned, stating age, qualification, experience, etc., together with copies of testimonials.—Henry M. Stanley, House Governor and Secretary.

**THE PRINCE OF WALES'S GENERAL HOSPITAL, London, N.14.**—The Governors will shortly proceed to the election of a **TEMPORARY HONORARY ASSISTANT PHYSICIAN** to the Department of Physical Medicine. Candidates must be engaged in consulting practice only. Further details can be obtained from the Director. Applications, together with copies of three recent testimonials, should be lodged with the undersigned on or before Wednesday, November 10.—J. C. Burdett, Director and House Governor.

**LIVERPOOL OPEN-AIR HOSPITAL FOR CHILDREN.** The Margaret Beavan Hospital, Leasowe, Moreton, Wirral.—Applications are invited from registered medical practitioners, male or female, including R and W practitioners who now hold A posts, for the appointment of **RESIDENT MEDICAL OFFICER (B2),** vacant immediately. The appointment will be for six months. Salary at the rate of £250 per annum, with full residential emoluments. The Hospital is for the treatment of surgical tuberculosis and other orthopaedic conditions. 240 beds. Applications to be sent to the Senior Resident Medical Officer, together with copies of two recent testimonials.

**BOROUGH OF WALTHAMSTOW.** Thorpe Coombe Maternity Hospital. (54 beds.) **ASSISTANT RESIDENT MEDICAL OFFICER.**—Applications are invited from qualified medical women for the above B1 post, tenable for one year at a salary of £200, plus bonus of £18 5s. (subject to satisfactory service), with board, residence, and laundry. Previous experience in obstetrics is desirable. Suitably qualified W practitioners holding B2 or B1 appointments are invited to apply. Forms of application to be obtained from the undersigned, should be completed and returned, with copies of three recent testimonials, not later than noon on Saturday, November 13, 1943.—G. A. Blakeley, Town Clerk, Town Hall, Walthamstow, E.17.

**BOROUGH OF ACTON. ASSISTANT MEDICAL OFFICER OF HEALTH.**—Applications are invited from qualified medical practitioners, men or women, for the temporary post of Assistant Medical Officer of Health. Duties will include maternity and child welfare and school medical work: civil defence duties may also be required. Salary from £550 to £730 per annum, in accordance with qualifications and experience, less superannuation contributions. Applications must be delivered by November 8 to Town Clerk, Town Hall, Acton, W.3.

**BOOTLE GENERAL HOSPITAL, Linacre Lane, Bootle, Liverpool, 20. CASUALTY OFFICER (A).**—Applications are invited from registered medical practitioners, male and female, for the above appointment, including practitioners within three months of qualification who are liable to service under the National Service Acts. If held by a practitioner who is liable under these Acts, appointment will be for a period of six months; otherwise it will be for six months with the possibility of extension. Salary is at the rate of £150 per annum, with full residential emoluments. Applications should be sent to the undersigned as soon as possible.—A. J. Cooper, Superintendent.

**WEIR HOSPITAL, Weir Road, Balham, London, S.W.12.—LOCUM M.O.,** part-time, female, required at once. Remuneration £100 p.a. All particulars to the Honorary Secretary-Superintendent, Weir Hospital.

## HOMES

### WYE HOUSE, BUXTON

A private Hospital for the treatment and care of Nervous and Mental Disorders in both sexes. Voluntary, Temporary and Certified patients received. Apply to Dr. IAIN MACPHAIL. Tel.: Buxton 130

### THE GRANGE, near ROTHERHAM

For Ladies suffering from Nervous and Mental Disorders. Certified, voluntary and temporary patients received. Country house, beautiful grounds. Five miles from Sheffield. Res. Phys.: GILBERT E. MOULD. L.R.C.P., M.R.C.S. Ecclesfield 48390.

### TOR-NA-DEE SANATORIUM

Managing Director: DAVID LAWSON, M.D., F.R.S.E. For the treatment of PULMONARY TUBERCULOSIS AND ALLIED DISEASES. Medical Superintendent: R. Y. KEERS, M.D. (Edin.).

For Prospectus apply to the Secretary, Tor-na-Dee, Murtle, Aberdeenshire. Telephone: Cults 107.

### PENDYFFRYN HALL SANATORIUM

All Modern Methods of Treatment Available

Ideally situated for the treatment of Tuberculosis. Shelter from E. and N.E. winds. Climate mild and bracing. Low rainfall, high average of sunshine. The Sanatorium is situated in its own Park. There are miles of graduated walks through pine, gorse, and heather, rising to 800 ft. and commanding extensive sea and mountain views. Central heating, electric light, X-ray installation. Wireless in all rooms. Full day and night nursing staff. Special milk supply from a tuberculin tested herd. Easily accessible from London, Manchester, Liverpool, Birmingham, and the North.

Medical Superintendent: DENNISON PICKERING, M.D. Apply Secretary, Pendyffryn Hall, near Penmaenmawr, North Wales. Phone 20.

(Continued on p. 19)

# THE Medical Defence Union

Established  
1885

Annual Subscription £1

MEMBERSHIP EXCEEDS 26,000

Assets exceed £100,000

Unlimited indemnity provided against damages and costs in any case undertaken by the Union.

Full particulars from the Secretary (Dr. ROBERT FORBES), The Medical Defence Union, Ltd., 49, Bedford Sq., London, W.C.1

MUSEum  
1337

## CHARGES FOR CLASSIFIED ADVERTISEMENTS

Circulation 47,000.

To economize in paper and to avoid expense in booking, postage and collection, all advertisements must be paid for at time of order. Publication will be in the earliest possible issue. Delays are unavoidable in present circumstances.

To members of the Association, the charge for advertisements of Assistants, Locums, Partnerships and Practices is 7/6 for 20 words plus 2/6 if a box number is used. Extra words 2/6 for 5 (or less). Adverts should be clearly marked "Member."

Personal, Public Appointments, and Notices.—Minimum charge 16/- which covers up to 20 words. Additional words 4/- for 5 or less.

Educational, Hospitals and Homes.—2/6 a line. Minimum charge 15/-.

Assistancies, Locums, Medical Posts, Partnerships, Practices, Dispensers, Typing, Duplicating, Houses, Consulting Rooms, Miscellaneous, minimum charge 10/-, which covers up to 20 words. Additional words 2/6 every 5 or less. If a Box Number is used (instead of name and address), 2/6 extra per insertion.

† Name and address of owner and of the firm negotiating the sale must accompany advertisement. These details are not for publication.

Births, Marriages, and Deaths.—The charge for announcements under this head is 10/6. This amount should be forwarded with the notice, authenticated by name and address of sender.

Box No. replies should be addressed separately to each No. care of this Office. They are forwarded to the advertiser under plain cover. In no circumstances can the name and address of Box No. Advertiser be divulged.

Every effort is made to ensure the accuracy of advertisements appearing in the Journal. No recommendation is implied by acceptance, and the British Medical Association reserves the right to refuse or interrupt the insertion of any advertisement.

Advertisement Manager, British Medical Journal, B.M.A. House, Tavistock Square, London, W.C.1. Telephone: EUston 2111.

## NOTICES

APPLICANTS ARE ADVISED not to send original testimonials when replying to advertisements, copies will answer the purpose quite as well, and in the event of their being lost or mislaid no inconvenience will ensue.

## EDUCATIONAL

BRITISH POSTGRADUATE MEDICAL SCHOOL (University of London).

Diary for Week Ending November 5, 1943

Daily—10 a.m. to 4 p.m.: Medical Clinics, Surgical Clinics and Operations, Obstetrics and Gynaecological Clinics and Operations.

1.30 p.m.: Post-mortems

Monday, November 1.—10 a.m.: Course on "The Surgical Care of the Soldier in Training" commences.

Tuesday, November 2.—10 a.m.: Paediatric Clinic, Dr. R. Lightwood. 11 a.m.: Gynaecological Clinic, Mr. Green-Armstrong. 2 p.m.: "Innocent and Malignant Growth in vitro," Dr. R. J. Ludford.

Wednesday, November 3.—11.30 a.m.: Clinico-pathological Conference (Medical).

Thursday, November 4.—2 p.m.: Dermatological Clinic, Dr. R. T. Brain. 2.15 p.m.: X-ray Demonstration on "Intrathoracic Neoplasms."

Friday, November 5.—12.15 p.m.: Clinico-pathological Conference (Surgical). 2 p.m.: Clinico-pathological Conference (Gynaecological). 2 p.m.: Neurological Ward Clinic, Mr. G. C. Knight. 2 p.m.: Sterility Clinic, Mr. Green-Armstrong.

F.R.C.S.(EDIN). Postal and Oral Courses continued as usual. Full details.—H. C. Orrin, F.R.C.S., Surgeon\* Hall, Edinburgh.

L.M.S.S.A. FINAL EXAMINATIONS. Surgery, Nov. 8, Dec. 6, 1943, Jan. 10, 1944; Medicine, Pathology, Nov. 15, Dec. 13, 1943, Jan. 17, 1944; Midwifery, Nov. 16, Dec. 14, 1943, Jan. 18, 1944. For particulars apply Registrar, Apothecaries Hall, Black Friars Lane, London, E.C.4.

POSTAL COACHING for all Medical Examinations. Some successes from 1901-42: M.D.(Lond.), 435; M.B., B.S.(Lond.), final, 380; F.R.C.S.(Eng.), primary, 318; F.R.C.S.(Eng.), final, 254; M.R.C.P.(Lond.), 352; M.R.C.S., L.R.C.P., final, 782; D.A. (1936-42), 50; F.R.C.S.(Edin.) and D.R.C.O.G., many successes. Assistance with M.D. thesis. Special arrangement for medical officers with Forces. Medical Prospectus (24 pp.) gratis, along with list of Tutors, etc., on application to the Principal.—University Examination Postal Institution, 17, Red Lion Square, London, W.C.1. Phone Holborn 6313

REQUIRED, WELL-QUALIFIED Practitioners, either sex, with teaching experience, as additional TUTORS on subjects required for D.A., D.P.M., and D.C.H. examinations.—Apply Secretary, Medical Correspondence College, 19, Welbeck Street, London, W.1.

POSTGRADUATE STUDY. Diploma in Anaesthetics; Diploma in Psychological Medicine; Diploma in Ophthalmology; Diploma in Radiology; Diploma in Laryngology; Diploma in Child Health. F.R.C.S.(Eng.), and all Surgical Examinations; M.R.C.P.Lond., and all Medical Examinations; M.D. Thesis of all Universities. No interruption of courses during the war. Complete Guide to Medical Examinations sent free on application. Applicants should state in which qualification they are interested. Address: Secretary, Medical Correspondence College, 19, Welbeck St., London, W.1.

ROYAL COLLEGE OF PHYSICIANS OF LONDON.—Dr. J. W. Brown, F.R.C.P., will deliver the Bradshaw Lecture on Thursday, November 4, at 2.15 p.m., at the College, Pall Mall East, S.W.1. Subject: "The Interdisciplinary Septal Defect." Any Member of the Medical Profession admitted on presentation of card.—By Order of the President, H. M. Barlow, Secretary.

ROYAL EYE HOSPITAL, St. George's Circus, S.E.1. MALCOLM MCHARDY MEMORIAL LECTURES.—A course of eight lectures on *The Anatomy of the Eye and Orbit* will be delivered at the Hospital on Mondays, November 22, 29, December 6, 13, and January 3, 10, 17, and 24, at 4.30 p.m. by Prof. Thomas Nicol of King's College, Strand, with L. V. Cargill, Esq., F.R.C.S., in the chair at the first lecture. The lectures are open to the profession and medical students.

THE BEDFORD PHYSICAL TRAINING COLLEGE, 37, Lansdowne Road, Bedford. Principal, Miss Stansfield, O.B.E.; Vice Principal, Miss Petit. Students are trained to become teachers in Gymnastics and Games, and the training, which extends over three years, includes Educational and Medical Gymnastics, Massage, Games, Dancing, and Swimming. Fees: £165 per annum. Two scholarships of £50 and two of £25 are offered annually.—For particulars apply Secretary.

THE EXAMINING BOARD IN ENGLAND BY THE ROYAL COLLEGE OF PHYSICIANS OF LONDON AND THE ROYAL COLLEGE OF SURGEONS OF ENGLAND.—Notice is hereby given that the Examinations for the following Diplomas will commence on the dates stated below: Diploma in Anaesthetics, Monday, November 22; Diploma in Laryngology and Otolaryngology, Monday, December 6; Diploma in Psychological Medicine, Monday, December 6. Candidates who have complied with the necessary requirements, and who desire to present themselves for examination, must apply in writing to the Secretary, Examination Hall, 8-11, Queen Square, London, W.C.1, at least twenty-one days before the date of Examination, transmitting at the same time such certificates as may be required by the Regulations of the Board, together with the full amount of the fee for the part or parts of the Examination which they desire to enter (D.A., £6 6s.; D.L.O. and D.P.M., £6 6s. for each part). Applications for Part II are due at the same time as for Part I.—Horace H. Rew, Sec.

## ASSISTANTSHIPS

WANTED IMMEDIATELY, Indoor and Outdoor ASSISTANTS, also Duration Locums for town and country practices, with and without view to partnership. Good salaries offered.—State full particulars, British Medical Bureau, 33, Cross Street, Manchester, 2.

WANTED IMMEDIATELY, ASSISTANT, male or female, British, for private and panel practice in Midland town, all found, car provided.—Box 2955, B.M.J.

WANTED IMMEDIATELY, ASSISTANT, with or without view to partnership, in pleasant country town, Cornwall, live out, salary by arrangement, car and petrol provided.—Box 2892, B.M.J.

WANTED IMMEDIATELY, ASSISTANT, near Manchester, married or unmarried, indoor, dispenser kept, furnished house provided, salary £500 p.a., all found, £52 p.a. car allowance.—Box 2775, B.M.J.

WANTED, OUTDOOR ASSISTANT for mixed panel and private practice in Midland town, car provided, £700 per annum.—Box 3024, B.M.J.

WANTED, ASSISTANT IMMEDIATELY, Midlands practice, accommodation and car provided, good salary.—Dr. C. A. Samuels, 32, Dudley Street, West Bromwich. Phone WES 0435.

WANTED IMMEDIATELY, for mixed practice in North-West England, male ASSISTANT, single, car driver, salary by arrangement.—Box 3006, B.M.J.

WANTED AT ONCE, for general practice, Frome, Somerset, ASSISTANT (woman preferred) for duration, or one year or shorter fixed period.—Apply, stating full particulars, to Dr. E. M. M. Ogilvie, Norton House, Frome, Somerset.

WANTED, OUTDOOR ASSISTANT, single, for industrial (no collieries) and private practice in pleasant district, lady considered, comfortable accommodation available, minimum salary £600, plus car allowance.—D.s. Fleming and Mackay, Cwmbran, Newport, Mon.

WANTED, OUTDOOR ASSISTANT, in Cheshire town, salary £650 to £700 per annum, according to experience, car provided.—Box 3004, B.M.J.

WANTED, ASSISTANT, male, for agricultural and colliery district, S. Wales, anaesthetic and midwifery, experience essential.—Box 3015, B.M.J.

WANTED ASSISTANT, outdoor, country town and country practice, hospital, motorist, salary, etc., by arrangement.—James, Leominster, Herefordshire.

WANTED, ASSISTANTSHIP WITH VIEW, early succession or small practice with scope, graduate, 27, exempt, married, free December, experienced obstetrics, anaesthetics, G.P.—Box 2889, B.M.J.

WANTED, ASSISTANTSHIP WITH VIEW, country or seaside, preferably North Wales, Lancs. or Lake district, young Englishman, single, exempt.—Box 2954, B.M.J.

WANTED, SOUTH-WEST WALES, OUTDOOR ASSISTANT for duration in a country town, substantial salary, car provided, small hospital.—Box 2769, B.M.J.

WANTED, NEWCASTLE-UPON-TYNE, energetic experienced outdoor ASSISTANT, abstainer, either sex, dispenser kept, car provided if necessary, excellent salary offered, usual bond.—Box 3003, B.M.J.

ASSISTANT REQUIRED, male, panel and private practice within 30 miles London, salary £600, all found, with staffed hse. and car.—Box 3007, B.M.J.

ASSISTANT WANTED, CAMBRIDGE, accommodation allowance and car provided, male or female, good salary suitable applicant.—Box 2980, B.M.J.

ASSISTANT WANTED IMMEDIATELY, male or female, near London, salary by arrangement, mixed practice, indoor or outdoor.—Phone Ilford 0367.

ASSISTANT WITH VIEW to Partnership and eventual Succession, middle-class panel and private practice, West Midlands.—Apply "Partnership," c/o, Philip Harris Ltd., 144, Edmund Street, Birmingham.

ASSISTANT WANTED, woman or unmarried man preferred, for town and country practice, dispenser kept, car available if required, salary £600-£650 outdoor.—Coltart, Chilworth, Lavant Road, Chichester.

ASSISTANT WANTED, good-class town and country practice in Thames Valley, small unfurnished flat available.—Box 3005, B.M.J.

ASSISTANT WANTED, outdoor, British, married or single, for duration or with possible view, Lancs. town, dispenser kept, car and furnished house available if required.—Box 3017, B.M.J.

ASSISTANT WANTED for good-class practice in pleasant Midland town, work not heavy, salary at rate of £600 per annum, all found, interview essential.—Box 2669, B.M.J.

ASSISTANTSHIP WITH VIEW to PARTNERSHIP offered in good mixed Lancashire practice, furnished house available, salary £650-£700 by arrangement, English or Scotch graduate preferred.—Box 2652, B.M.J.

ASSISTANTSHIP in four-partner practice with death vacancy, in country town 30 miles London, small easily-run house, unfurnished, available, age limit 60, but partnership considered in case of younger man, salary according to age and capacity, housekeeper available.—Box 3014, B.M.J.

ASSISTANTSHIP WITH VIEW, nucleus with scope, or early succession wanted, experienced obstetrics, G.P., own car, free now.—Box 3023, B.M.J.

ASSISTANTSHIP REQUIRED, outdoor, permanent or view share later, age 43, married, exempt, late I.M.S., S.W. London, Surrey, or Sussex preferred.—Box 2952, B.M.J.

BIRMINGHAM, ASSISTANT WANTED, preferably married, £800 p.a., includes car allowance, free rent, rates.—Box 3001, B.M.J.

DOCTOR, FREE NOW, own car, desires LIGHT ASSISTANTSHIP or part-time work, separate accommodation preferred.—Box 3021, B.M.J.

LAKE DISTRICT, WANTED, ASSISTANT with or without view, pleasant unfurnished house, salary £500, plus upkeep of house, car found.—Box 2756, B.M.J.

ASSISTANTSHIP WITH VIEW required by woman doctor, experienced hospital, midwifery, G.P., furnished accommodation essential, Home Counties preferred.—Box 3013, B.M.J.

EXEMPT EXPERIENCED R.S.O., 33, married, British, offers services, ASSISTANTSHIP with view, general pract. with surgical scope.—Box 3028, B.M.J.

ENERGETIC SCOT, 28, married, ineligible, car, university degree, experienced panel and private practice, seeks ASSISTANTSHIP, no midwifery.—Box 2976, B.M.J.

LONDON, PART-TIME ASSISTANT required, to take surgeries.—Ring Putney 0567.

MALE OUTDOOR ASSISTANT required at once, British, good-class Midland practice, work light, time and scope for studies, preferably exempt military service, salary £650-£700 according to experience, furnished house available.—Box 2958, B.M.J.

OUTDOOR ASSISTANT WANTED immediately, duration, colliery practice, Doncaster, present assistant, over 2 yrs., called up, £500 all found, good digs, no branch surgeries or dispensing, car provided or allowance.—Box 2962, B.M.J.

OUTDOOR ASSISTANT wanted by Newcastle doctor, £600 per annum, car provided and furnished rooms.—Box 2960, B.M.J.

OUTDOOR ASSISTANCE offered in BRIGHTON or WORTHING, surgeries, visits, part- or whole-time, motorist cyclist.—Phone: Hove 2973, 7 p.m.

PART-TIME ASSISTANT WANTED for good-class practice, Midland town, good hospitals available, suit postgraduate student, salary by arrangement.—Box 2670, B.M.J.

LIECESTER, OUTDOOR ASSISTANT WANTED, inexperience not important, male, no midwifery, dispenser, salary by arrangement, practically no night work.—Box 3008, B.M.J.  
 WOMAN ASSISTANT, OUTDOOR, wanted, British, in good, mixed practice within easy reach of London, regular off-duty times.—Box 3002, B.M.J.  
 YOUNG SCOTTISH M.B., experienced, exempt, desires ASSISTANTSHIP with prospects, or might consider purchasing small practice, South Coast district.—Box 2964, B.M.J.

### LOCUMS

WANTED, DURATION OR SHORTER LOCUM by medical woman, experienced, dispensing, car.—Box 3027, B.M.J.  
 DURATION LOCUM WANTED, mixed general practice with fair-sized panel in pleasant residential town within 25 miles of London, recent references required.—Box 3020, B.M.J.  
 DURATION LOCUM WANTED urgently for Bedfordshire, indoor, usual terms.—Telephone 4003 Bedford.  
 DURATION LOCUM, private and panel practice, pleasant suburb, Midlands town, £650 a year, to include car expenses and furnished flat.—Box 3009, B.M.J.  
 EXPERIENCED BRITISH PRACTITIONER, 45, married, desires DURATION LOCUM or ASSISTANTSHIP, country, preferably South-West counties, house essential, own car.—Box 3012, B.M.J.  
 LADY DOCTOR, experience hospital and general practice, wishes LOCUMS or ASSISTANTSHIP in Perthshire.—Box 2880, B.M.J.  
 LOCUM WANTED IMMEDIATELY, whole-time, to live in, for 2-3 months for Wilts, industrial country practice during illness of principal.—Box 2959, B.M.J.  
 LOCUM WANTED, Newcastle-upon-Tyne, first fortnight November, 13 guineas weekly, car provided.—Box 2961, B.M.J.  
 LOCUMS WANTED for first two weeks in Nov., car provided, all found, £10 10s. per week.—Dr. Mukerji, Craghead, Co. Durham.  
 LOCUMS WANTED for November 1, indoor duration locum, mixed practice, chiefly panel, South Wales coast town, all found, car provided, salary, plus good commission on profits.—Box 2951, B.M.J.  
 M.B., Ch.B., ex-R.A.M.C., own car, free shortly, wishes to book SHORT LOCUMS, would consider long locum or Assistantship, state terms.—Box 2977, B.M.J.  
 M.B., Ch.B., DESIRES LOCUMCY OR ASSISTANTSHIP, give particulars.—Box 2760, B.M.J.  
 WELL QUALIFIED LOCUM required, capable carrying on good practice for duration, either sex, high remuneration to keen conscientious worker.—Box 2779, B.M.J.

### MEDICAL POSTS

CONSULTING SURGEON, just retiring from large hospital, is available for HOSPITAL OPERATIVE WORK, used to operating three mornings a week at hospital.—Particulars to Box 2972, B.M.J.  
 EXPERIENCED PRACTITIONER, 35, exempt, highest credentials, own car, requires PART-TIME FACTORY APPOINTMENT, or would Assist doctor in general practice, times could be arranged to suit, London or within easy reach.—Box 2979, B.M.J.  
 HONORARY RADIOLOGIST required at the South Eastern Hospital for Children, Sydenham, S.E., 26.—Apply Secretary.  
 M.B., B.S., 31, INELIGIBLE, experienced hospital and G.P., wants PART-TIME WORK, own car if necessary.—Ring GIP. 3640.

### PARTNERSHIPS

WANTED, PARTNER for good-class practice in N.W. residential resort, substantial share, prelim. assist., or salaried partner considered, accommodation near practice headquarters, secretary, terms provisional pending Gov. decision.—Box 2956, B.M.J.  
 WANTED, PARTNER (West Riding), for steadily increasing practice, income over £2,000, half-share available with succession later, preferably indoors to commence, please give details.—Box 2957, B.M.J.  
 DOCTOR (MALE) REQUIRES PARTNER (female) R.C. for half-share of North-Eastern practice, panel 2,400, Compact.—Box 2974, B.M.J.  
 PARTNER OR ASSISTANT with View in large private and panel practice in Middlesex, must be keen and energetic, suitable house, salary by arrangement at interview.—Box 2978, B.M.J.  
 PARTNERSHIP, HALF-SHARE in old-established practice in Lancs. town, panel 3,700, receipts last year £5,500 (increasing), local hospital, incoming partner would be on staff, house on rent with garden and garage, dispenser-bookkeeper kept, full investigations offered, premium by arrangement.—Box 3022, B.M.J.

### PRACTICES

WANTED, PANEL PRACTICE or PARTNERSHIP from Indian or West Indian doctor, London or vicinity, full particulars, state terms of payment.—Box 3010, B.M.J.  
 DEATH VACANCY.—Large old-established panel and private PRACTICE in Midland industrial town, modern house, garden, garage.—Box 2973, B.M.J.

ESTABLISHED NUCLEUS with surgery and large flat, new estate, 10 minutes West End, suit P.G.'s, would share.—Phone MACready, 1331.  
 FOR SALE, busy mixed PRACTICE, Midlands, old-established, panel about 3,000, gross income (certified revenue accounts last 3 years) over £3,200 per annum, 1½ years' purchase cash, large house for sale or rent, lengthy introduction given if required.—Box 2970, B.M.J.  
 GLOS. COUNTRY PRACTICE for sale near Bristol, receipts £1,200, panel 800, cottage hospital, premium 1½ years, house, freehold, £1,500.—Box 2965, B.M.J.  
 MEDICAL PRACTICE (panel and private), in Edinburgh, house can be acquired with practice if desired.—Box 126, Robertson and Scott, 73, Hanover Street, Edinburgh, 2.  
 PRACTICE WANTED in good district, preferably Midlands or South, good house essential, capital available, strict confidence.—Box 3011, B.M.J.  
 SOUTH LANCs, pleasant country town, better-class PRACTICE for sale, income over £2,000, including panel £1,000, preliminary assistantship if desired, good house and garden for sale.—Box 2358, B.M.J.

### DISPENSING, TYPING, SECRETARIAL, RECEPTION, &c.

*None of the vacancies for women advertised in these columns relates to a woman between 18 and 41 unless such a woman (a) has living with her a child of hers under the age of 14, or (b) is registered under the Blind Persons Acts, or (c) has a Ministry of Labour permit to allow her to obtain employment by individual effort.*

ASSISTANT DISPENSER WANTED AT ONCE.—Apply, with full particulars, to Drs. Lachlan and Dyer, Brentwood, Essex.  
 ACCOUNTANT (WOMAN) with long administrative and accountancy experience in Hospitals, requires PART-TIME WORK with doctor, accounts, etc.—Write Box 71, 103, Kilburn High Road, N.W.6.  
 BUSINESS LADY REQUIRES EVENING SECRETARIAL-RECEPTION WORK with doctor, clinic, or nursing home, nursing knowledge, Inner London or N.13 vicinity.—Box 2966, B.M.J.  
 DISPENSER-BOOKKEEPER WANTED immediately, East Anglian Country practice.—Write, giving references, salary, etc., Box 2757, B.M.J.  
 DOCTOR'S WIFE, 33, seeks residential post as RECEPTIONIST, bookkeeper, housekeeper, ten years' experience of doctor's house, excellent driver, one girl boarding-school age, one boy, 6, at school all day, references given.—Apply Box 3025, B.M.J.  
 DISPENSER-BOOKKEEPER (Hall), long experience, desires post, doctor, firm, certificates typing, bookkeeping, near London, preferred Hertfordshire, Bucks.—Box 3019, B.M.J.  
 DISPENSER-BOOKKEEPER WANTED for partnership practice in Northants city, live out, only central surgery, good salary.—Box 3016, B.M.J.  
 DOMESTICATED LADY DESIRES POST in doctor's household as Receptionist with light household duties, could run house, prefer country.—Box 2983, B.M.J.  
 LADY TYPIST REQUIRED, state salary.—University Examination Postal Institution, 17, Red Lion Square, W.C.1.  
 SECRETARY-RECEPTIONIST REQUIRES post to doctor in Coventry or Nuneaton, preferably part-time.—Miss Harder, c/o Dr. Henry, Bedworth, Warwickshire.  
 SECRETARY-RECEPTIONIST, FULL-TIME, required by ophthalmic surgeon in Harley Street.—Box 3026, B.M.J.  
 SECRETARIAL POST WANTED by lady with hospital experience, exempt National Service.—Box 2981, B.M.J.

### MISCELLANEOUS

WANTED, PORTABLE VICTOR ELECTRO-CARDIOGRAPH, good price if instrument passed by makers.—Box 2953, B.M.J.  
 ENVELOPE RESEAL LABELS, 250 3s.; 1,000 9s. 6d. Medical printing. Pre-war stationery. Samples Stamp.—Hodgson (Dept. B), Printer, Bradford.  
 FOR SALE, to essential user, doctor's AUSTIN 10, December, 1941, mileage 20,000, one owner, South Dorset, best offer.—Box 3018, B.M.J.

The fact that goods made of raw materials in short supply owing to war conditions are advertised in this Journal should not be taken as an indication that they are necessarily available for export.

MEDICAL PHOTOGRAPHS and Drawings for illustration, records, etc.—Write for particulars, Eric O. Sonntag, 159, Bickenhall Mansions, Baker Street, London, W.1. WELbeck 8860.  
 MACLEAN'S REVALENTA, made from finest lentil and barley flour, enjoys a "healthy" reputation extending over half a century, a favourite with children and invalids, easily digested and highly nutritious, in tins, priced 2s. and 4s. each, trial sample on request.—Raimes, Clark and Co., Ltd., Proprietors and Manufacturers, Edinburgh. London Agents: Butler and Crispe; May, Roberts and Co.

SIEMENS SEMI-PORTABLE X-RAY Heliosphere with all accessories for sale, very little used in private practice, perfect order guaranteed, offers invited.—Box 2777, B.M.J.  
 OVERDUE ACCOUNTS.—For 28 years the C.P.A. has rendered efficient and straightforward service to the medical profession in collecting overdue accounts. It is still at their service.—Credit Protection Association, Ltd., 62, London Wall, E.C.2.  
 £20 OR AGREED PRICE offered for pair BINOCULARS, Goetz, Leitz, or Zeiss, or telescope.—Dr. Bliss, Corbett Hospital, Stourbridge, Wores.  
 £800 PAID for any 30 H.P. ROLLS ROYCE, £500 for 25 h.p. coachwork unimportant, low mileage essential, long-chassis Austin or Buick suitable.—Write Mobile Units (Ambulance Conversions), Ripley, Surrey.

### HOTELS

CROWHURST PARK HOTEL, Battle, Sussex, opening November, Sussex country house, 1½ hrs. Charing Cross, magnificently situated on high ground in extensive parkland, 1½ miles Battle, rough shooting, central heating, own poultry and garden produce, terms from four guineas inclusive.

### RESIDENT PATIENTS

NEURASTHENIAS, NERVOUS EXHAUSTIONS and similar patients and guests received in Private NURSING HOME of medical man and his wife. Resident Nurse. Beautiful country, London 40 minutes by train.—Dr. C. F. Fothergill, Hensol, Chorley Wood, Herts.

ACCOMMODATION AS PAYING GUEST required by elderly lady (not invalid), in house of retired nurse, Guildford, Epsom, or Leatherhead districts preferred.—Box 2975, B.M.J.

### HOMES

BETHLEM ROYAL HOSPITAL  
 For Nervous and Mental Disorders  
 MONKS ORCHARD, MONKS ORCHARD ROAD  
 EDEN PARK, BECKENHAM, KENT

Reg. Tel. Address: Bethlem, Beckenham,  
 Station: Eden Park (Southern Railway),  
 Telephone: Springfield 1180-1181.

President: HER MAJESTY QUEEN MARY. Vice-President: SIR GEORGE WILKINSON, Bart., Alderman. Joint Treasurers: Edmund Stone, Esq., John L. Worsfold, Esq., O.B.E. Physician-Superintendent: J. G. Porter Phillips, Esq., M.D., F.R.C.P.

This Registered Hospital is situated at Monks Orchard in some 250 acres of park, pleasure and farm grounds. Applications can be considered on behalf of patients of the educated classes in a presumably curable condition.

With a view to early treatment voluntary or un-certified patients are admitted. Patients who can contribute 5 guineas weekly towards the cost of treatment and maintenance may be received as vacancies arise. The Committee will also consider applications for admission at lower rates and in certain cases will be prepared to admit patients free of charge. The comfort of sensitive patients is greatly enhanced by the fact that the majority are given single bedrooms. TREATMENT ON MODERN PRINCIPLES. Every facility for specialized investigation and treatment is provided in the Lord Wakefield of Hythe Science and Treatment Unit, including RADIOLOGICAL and DENTAL DEPARTMENTS, BIOCHEMICAL, PATHOLOGICAL, and PSYCHOLOGICAL LABORATORIES. The Medical Staff have access to a panel of Consultants in cases which present unusual symptoms requiring specialized investigation and treatment. Under the direction of qualified officers HELIOTHERAPY, HYDROTHERAPY, and ELECTROTHERAPY are administered in the Physiotherapy Department. SPECIALIZED TREATMENT of various forms is given to suitable cases.

OCCUPATIONAL THERAPY in the form of various Arts and Crafts is actively encouraged from the medical aspect, and under the guidance of a competent instructor this department has proved most effective as a therapeutic factor in all stages of mental illness. The promotion of physical fitness is a prominent item of treatment, and this is enhanced by arrangements for patients to take part in Outdoor and Indoor Sports and Entertainments. Application should be made to the Physician-Superintendent.

### HAYDOCK LODGE

NEWTON-LE-WILLOWS, LANCASHIRE  
 Tel.: Wootton, Ashton-in-Makerfield.  
 Phone: Ashton-in-Makerfield 7311.

For the reception and treatment of PRIVATE PATIENTS of both sexes of the UPPER and MIDDLE CLASSES suffering from mental and nervous disorders, alcoholism, and drug addiction, either voluntarily, temporarily, or under Certificate. Patients are classified in separate buildings according to their mental condition.

Situated in park and grounds of 400 acres. Self-supported by its own farm and gardens, in which patients are encouraged to occupy themselves. Every facility for indoor and outdoor recreation. For terms, prospectus, etc., apply Medical Superintendent.



### ST. ANDREW'S HOSPITAL, NORTHAMPTON For Nervous and Mental Disorders

**President:** THE MOST HON. THE MARQUESS OF EXETER, K.G., C.M.G., A.D.C. **Medical Supt.:** THOMAS TENNENT, M.D., F.R.C.P., D.P.H., D.P.M. This Registered Hospital is situated in 130 acres of park and pleasure grounds. Voluntary patients who are suffering from incipient mental disorders or who wish to prevent recurrent attacks of mental trouble; temporary patients and certified patients of both sexes are received for treatment. Careful clinical, biochemical, bacteriological, and pathological examinations. Private rooms with special nurses, male or female, in Hospital or in one of the numerous villas in grounds of the various branches can be provided.

**WANTAGE HOUSE**—This is a Reception Hospital in detached grounds with a separate entrance to which patients can be admitted. It is equipped with all the apparatus for the complete investigation and treatment of Mental and Nervous Disorders by the most modern methods; insulin treatment is available for suitable cases. It contains special departments for hydrotherapy by various methods including Turkish and Russian baths, the prolonged immersion bath, Vichy Douche, Scotch Douche. Electrical baths, Plombières treatment, etc. There is an Operating Theatre, a Dental Surgery, an X-ray Room, an Ultra-Violet Apparatus, and a Department for Diathermy and High-frequency Treatment. It also contains Laboratories for biochemical, bacteriological, and pathological research. Psychotherapeutic treatment is employed when indicated.

**MOULTON PARK**—Two miles from the main Hospital there are several branch establishments and villas situated in a park and farm of 650 acres. Milk, meat, fruit, and vegetables are supplied to the Hospital from the farm, gardens, and orchards of Moulton Park. Occupational therapy is a feature of this branch, and patients are given every facility for occupying themselves in farming, gardening, and fruit-growing.

**BRYN-Y-NEUADD HALL**—The seaside house of St. Andrew's Hospital is beautifully situated in a park of 330 acres at Llanfairfechan amidst the finest scenery in North Wales. On the North-West side of the Estate a mile of sea-coast forms the boundary. Patients may visit this branch for a short seaside change or for longer periods. The Hospital has its own private bathing house on the seashore. There is trout-fishing in the park.

At all the branches of the Hospital there are cricket grounds, football and hockey grounds, lawn tennis courts (grass and hard courts), croquet grounds, golf courses, and bowling greens. Ladies and gentlemen have their own garden, and facilities are provided for handicrafts such as carpentry, etc. For terms and further particulars apply to the MEDICAL SUPERINTENDENT (Telephone Nos. 2356 and 2357 Northampton), who can be seen in London by appointment.

### THE MAGHULL HOMES FOR EPILEPTICS (INC.), MAGHULL, near LIVERPOOL

Open Air Occupation and Recreation for Patients. Farming, Gardening, Football, Cricket, Tennis, Bowls. School recognized by Board of Education. Fees:—1st Class (men only) from £3 per week. 2nd Class (men and women) from 37s. 6d. per week. 3rd Class (men and women) Supported by:—Public Assistance Committees from 27/6 p.w. Education Committees from 33/6 p.w. Private from 21/- p.w. For further particulars apply—C. EDGAR GRISEWOOD, A.C.A., Sec., 20, Exchange Street East, Liverpool, 2.

### EPHING HOUSE

**LITTLE BERKHAMSTED, nr. HERTFORD, Herts**  
An attractive and comfortable PRIVATE HOME, beautifully situated in its own grounds 400 ft. above sea-level. Exceptionally healthy air and position affords every facility for convalescence. Foam Baths, Billiards, Squash Rackets, Lawn Tennis, Croquet, Bowls, Farm Produce, etc.

Treatment for Ladies and Gentlemen suffering from Insomnia, Functional Nervous Disorders, Alcohol and Drug Habits, Chronic Heart and Kidney Diseases; also Convalescing Cases. Telephone: Essendon 212. Apply J. C. BAKER, M.B.

### LAVERSTOCK HOUSE, nr. SALISBURY, WILTS

Private Mental Home for Certified and Uncertified Ladies and Gentlemen. Lovely house and gardens (18 acres). ESTABLISHED 200 YEARS, MODERN TREATMENTS. Illustrated brochure may be obtained from Dr. HORACE HILL, M.R.C.P., Physician-Superintendent. Tel.: Salisbury 2612.

### CHEADLE ROYAL, CHEADLE, CHESHIRE

A registered Hospital for MENTAL DISEASES, and its Seaside Branch, GLAN-Y-DON, Colwyn Bay, N. Wales. The object of this Hospital is to provide the most efficient means for the treatment and care of Patients of both sexes suffering from MENTAL and NERVOUS DISEASES. The Hospital is governed by a Committee appointed by the Trustees of the Manchester Royal Infirmary. VOLUNTARY, TEMPORARY, and CERTIFIED PATIENTS RECEIVED. For terms and further information apply to the Medical Superintendent. Telephone: Gatley 2231.

### THE COPPICE, NOTTINGHAM Hospital for Mental Diseases

This Institution is exclusively for the reception of a limited number of Private Patients of both sexes of the Upper and Middle Classes at moderate rates of payment. It is beautifully situated in its own grounds on an eminence a short distance from Nottingham, and from its singularly healthy position and comfortable arrangements affords every facility for the relief and cure of those mentally afflicted. Occupational Therapy. Voluntary and Temporary Patients received. Tel.: 64117.

For terms, etc., apply to the Medical Superintendent.

### PECKHAM HOUSE

112, PECKHAM ROAD, LONDON, S.E.15  
Telegrams: "ALLEVIATED, LONDON."

Telephone: RODNEY 2641-2642.  
A Private Mental Hospital for Ladies and Gentlemen suffering from Nervous and Mental Illness where the amenities of a comfortable home are combined with full investigation and every well-established modern treatment. TERMS FROM 3½ GUINEAS WEEKLY. Illustrated Prospectus may be obtained from the PHYSICIAN-SUPERINTENDENT.

### NORTHUMBERLAND HOUSE GREEN LANES, FINSBURY PARK, N.4

A PRIVATE HOSPITAL for the treatment of mental and nervous illnesses. Conveniently situated and easy of access from all parts. Six acres of ground, facing Finsbury Park. Voluntary and Temporary Patients received without certification. Shock therapy, Psychotherapy, and other modern forms of treatment. Air-raided Shelters have been provided. Telephone: Stamford Hill 2688. Telegrams: "Subsidiary, London." For further particulars apply to the MEDICAL SUPERINTENDENT.

### THE OLD MANOR, SALISBURY

Telephone: 3216 and 3217.

A Private Hospital for the Care and Treatment of those of both sexes suffering from MENTAL DISORDERS. Extensive grounds. Detached villas. Chapel. Garden produce from own gardens. Terms very moderate.

**Convalescent Home at Bournemouth**  
standing in 12 acres of ornamental grounds, with separate villas, tennis courts, etc. Patients or Boarders may visit the Home by arrangement. Illustrated Brochure on application to the MEDICAL SUPERINTENDENT, The Old Manor, Salisbury.

### CALDECOTE HALL, NUNEATON

A beautifully situated country mansion. Safe area in Warwickshire. Extensive grounds in which games and occupational therapy are available for treatment of "Neurosis and Alcoholism" in men. (Certified cases not received.) Illustrated brochure from Resident Med. Superintendent: A. E. CARVER, M.D., D.P.M. Phone: Nuneaton 241.

### STRETTON HOUSE

**CHURCH STRETTON, SHROPSHIRE** (Est. 1853)

A PRIVATE HOME for the treatment of Gentlemen suffering from Mental and Nervous Illness, including the allied disorders of Alcoholism and the Drug Habit. All types of early Mental and Nervous cases are received without certificate as Voluntary Patients under the provisions of the Mental Treatment Act, 1930. Bracing hill country. See Medical Directory, p. 2328. Apply to the MEDICAL SUPERINTENDENT. Phone 10 P.O. Church Stretton.

### CAMBERWELL HOUSE

33, PECKHAM ROAD, LONDON, S.E.5  
Telegrams: "PSYCHOLIA, LONDON."

Telephone: RODNEY 4242 (2 lines).

**For the Treatment of Mental Disorders**  
Completely detached Villas for mild cases. Voluntary patients received. Twenty acres of grounds; own garden produce. Hard and grass tennis courts, putting greens. Recreation Hall with Badminton Court, and all indoor amusements. Occupational therapy, Calisthenics, Actinotherapy, prolonged immersion baths, shock, and also modified insulin treatment. Chapel.

Senior Physician, Dr. HUBERT JAMES NORMAN, assisted by a resident Medical Staff and visiting Consultants. An illustrated Prospectus giving fees, which are strictly moderate, may be obtained upon application to the SECRETARY.

THE CONVALESCENT BRANCH is HOVE VILLA, BRIGHTON, and is 200 ft. above sea-level.

### HEIGHAM HALL, NORWICH

PRIVATE MENTAL HOME for Nervous and Mental Illness. All types of treatment available. Fees from 4 gns. per week upwards, according to requirements. Vacancies occasionally exist at reduced fees on the recommendation of the patient's own physician. Apply to Dr. J. A. SMALL. Telephone: Norwich 20080.

### THE GROVE HOUSE

**CHURCH STRETTON, SHROPSHIRE**

Private Home for Ladies mentally ill. Voluntary and Temporary Patients received. Medical Superintendent: Dr. J. A. MCCLINTOCK.

### CRICHTON ROYAL, DUMFRIES

For Nervous and Mental Disorders

Cases of alcoholism and drug addiction are admitted. Special department for Insulin Therapy. As the Hospital is well endowed, terms are exceptionally moderate. Medical certificates given anywhere in the British Isles are valid for admission of patients. Physician-Supt.: P. K. MCCOWAN, J.P., M.D., F.R.C.P., D.P.M., Barrister-at-Law. Telephone: Dumfries 1119.

### CITY OF LONDON MENTAL HOSPITAL DARTFORD, KENT

Ladies and Gentlemen received for treatment under certificates and without certification as either VOLUNTARY or TEMPORARY PATIENTS at a weekly fee of £2 9s. and upwards.

### THE LAWN, LINCOLN

A registered Hospital for MENTAL and NERVOUS DISEASES. Situated in Lincoln on the hill top, near the cathedral and castle. Spacious grounds with tennis and croquet courts, etc. Certified, temporary and voluntary patients of both sexes are received.

Treatment includes ELECTRICAL CONVULSIVE THERAPY and PSYCHOTHERAPY for suitable cases. Further particulars from the Medical Superintendent, JOHN F. R. GOODLAD, M.A., M.B., Ch.B., D.P.M., who may be seen by appointment. Telephone: Lincoln 165.

### TYKEFORD ABBEY, NEWPORT PAGNELL, Bucks

A country Nursing Home for FUNCTIONAL NERVOUS DISORDERS, MEDICAL and CONVALESCENT CASES. Fees from £5 5s. per week inclusive.

Apply: Dr. D. E. M. DOUGLAS-MORRIS. Telephone: Newport Pagnell 121.

### CHISWICK HOUSE, PINNER, MIDDLESEX

Telephone: PINNER 234.

A Private Hospital for the Treatment and Care of Mental and Nervous Illnesses in both sexes. A modern country house, 12 miles from Marble Arch, in attractive and secluded grounds. Fees from 10 guineas per week inclusive. Cases under Certificate. Voluntary and Temporary patients received for treatment. DOUGLAS MACAULAY, M.D., D.P.M.

### BOWDEN HOUSE, HARROW

Wartime address: Alkerton Grange, Eastington, nr. Stonehouse, Glos. Tel.: Stonehouse 206.

**COURT HALL, KENTON, near EXETER**  
FOR THE TREATMENT OF EIGHT LADIES, VOLUNTARY, TEMPORARY, and CERTIFIED PATIENTS.

### CLIFFDEN, TEIGNMOUTH

FOR EARLY AND CONVALESCENT CASES. Recreational Therapies are held daily by skilled Leaders. The house stands high with spacious balconies and extensive views of the South Devon coast. Beautiful garden. Own Dairy in 25 acres. Private road to beach. There is also a charming house, EBWORTHY, MANATON, DARTMOOR, situated in 20 acres 1,100 ft. up for bracing moorland air. Resident Physicians: BERTHA M. MULES, M.D., B.S.; ANNE S. MULES, M.R.C.S. L.R.C.P. Telephones: Starcross 259 and Teignmouth 289.

### SHAFTESBURY HOUSE

FORMBY-BY-THE-SEA, near LIVERPOOL

Specially built and licensed for the care and treatment of a limited number of ladies and gentlemen suffering from Nervous and Mental breakdown. Voluntary and certified patients received. Ladies also admitted as Temporary Patients without Certification. Terms moderate.

Apply RESIDENT PHYSICIAN, who may also be seen at 31, Rodney Street, Liverpool, by appointment. Tel.: No. 8 Formby.

### DUCHY HOUSE CLINIC, HARROGATE

Private Hospital for investigating obscure illnesses, well equipped for the investigation and treatment of rheumatic affections, diabetes, and diseases of the blood and alimentary tract. The services of a full consulting staff available; fees inclusive for investigation. For brochure apply Secretary. Tel.: Harrogate 3872.

### RUTHIN CASTLE, NORTH WALES

A Private Clinic, the first in Great Britain, for investigation and treatment of all forms of disease, except mental and infectious. There is a steel and concrete Air Raid Shelter with lift to all floors. Inclusive Charges. Apply Secretary. Tel.: Ruthin 66

### THE COTSWOLD SANATORIUM

On the Cotswold Hills seven miles from Cheltenham, Stroud and Gloucester. Fully equipped for the treatment of all forms of TUBERCULOSIS. Terms 5½ to 9 guineas per week inclusive. Full particulars from the MEDICAL SUPERINTENDENT, Cotswold Sanatorium, Cranham, Gloucester. Telephone: Witcombe 81. Telegrams: Hoffman, Birdlip.

**BEECHMONT HOUSE  
HAYWARD'S HEATH, SUSSEX**

For LADIES suffering from NERVOUS and MENTAL ILLNESS. Controlled by Brighton Mental Hospital Authorities. In pleasant woodland, entirely secluded, and with beautiful views of the Sussex Weald and Downs. Grounds and Gardens of 12 acres. Voluntary, Temporary and Certified patients accepted. Fees from 3 to 10 guineas per week. Apply Medical Supt. Tel.: Hayward's Heath 897.

**PERCIVAL TURNER, LTD.**

MEDICAL AGENCY (Est. 60 Years).  
25, MAIDEN LANE, STRAND, W.C.2.

Phone: Temple Bar 9011.

Night: Walton-on-Thames 1785.

LINCS, D.V., £2,890, panel 1,560, appts. House, 6 bed., etc. Offers.—MIDLANDS, rural, £1,600, panel 950, appts. £75. Ex. house and garden.—MIDLAND TOWN, 1/2 share of abt. £6,000. Panel 2,000. Chance of sev. hosp. appts.—MIDLANDS, Country, over £1,400, panel 1,300. Clubs £225. Easy terms.—MIDLAND TOWN, Share worth £1,500, panel and appts. GLOS., D.V., £1,500 p.a., pnl. 1,250. Good hse. Many others. Ask for list.

ASSISTANTS AND LOCUMS REQUIRED.

**LEE & MARTIN, LTD.**

Established 1877.

71, Temple Row, Birmingham.

'Grams: "Locum, B'ham." Phone: Mid. 5963.  
1. MIDLANDS.—Country PRACTICE, well-established, receipts £1,024. Panel 857. Good accom.  
2. STAFFS.—Good PRACTICE. Receipts £2,418. Panel 1,710. Good house.  
3. STAFFS.—Well-established PRACTICE. Receipts £1,295. Panel 1,417. Good house rent.  
4. STAFFS.—Nice-class PRACTICE. Receipts £1,434. Panel 811. Good house.  
Many others on application.

**BRITISH MEDICAL BUREAU**

Northern Branch:

33, CROSS STREET, MANCHESTER, 2.

Tel.: Blackfriars 3925; after office hours

Rusholme 2549. Tel.: "Locum, Manchester."  
SHEFFIELD, Death Vacancy, £2,000, Panel 2,110. Excellent House.—CHESHIRE, £2,200, Panel 1,160. Good House to rent. SOUTH YORKS, £2,720. Panel 3,000. Good House.—N. W. LANCs, Country, Over £2,200. Panel 1,000. Good House. Many others.

LOCUMS AND ASSISTANTS REQUIRED.

**BOVRIL MEDICAL AGENCY**

ALDINE HOUSE, 10-13, BEDFORD ST.,  
STRAND, LONDON, W.C.2.

Telephone: Temple Bar 1616-8—F. M. THEW.

1. ESSEX.—1/3 share after prelim. a'ship. in very sound pract. of over £3,000. Panel 1,700.
2. CORNWALL.—Market town 1/2 share of £2,700, prelim a'ship. Panel 1060. Prem. £1,600, instalts.
3. LANCs.—Large town. Old-est. practice over £3,300. Suit. house. Prem. 1 1/2 yrs. or nr. offer.
4. SALOP.—1/2 share of £4,730. Panel abt. 2,000. Fees 5s. to 2 gns. Gd. house and gdn.
5. DEATH VACANCY.—S. WALES. Receipts over £4,400. Panel 2,753. House rent £80 p.a. Prem. by arrangement. Prelim. locum tenency.
6. SOMERSET.—Country practice nr. sea of abt. £1,000. Panel 700. Appts. £235. Gd. house.
7. S. COAST TOWN.—Better-class non-panel practice av. £2,000. Fees 10s. 6d. to 21s. Good house and garden. Rent or sale.
8. CORNWALL.—Old-est. practice. Receipts abt. £1,700. Good house, productive garden, rent £100. Prem. £2,200, or near, part instalts.
9. FAVOURITE S. COAST TOWN.—1/2 share sound practice. Receipts £4,450. Panel over 3,000. Excel. house. Prem. £2,868.
10. WARWICKS.—Old-est country practice. Receipts £2,500. Panel 700. Good house and garden. Prem. 1 1/2 years or nr.
11. LONDON, E.—Practice £2,250. £700 appts. Small panel. House to rent. Prem. £2,000 or nr.
12. CORNWALL.—1/2 share of £3,000 unopposed practice in attract. dist. Ex. scope. Prem. 1 1/2 years. Prel. a'ship
13. DEATH VACANCY.—SUSSEX COAST. Old-est. practice. Receipts £1,000-£1,200, formerly £2,000. Panel abt. 1,000. Small hse. to rent. Prem. 1 yr. instalts.
14. S.W. COUNTRY.—Country practice of £750 offering considerable scope. Panel 600. Good house, 1 acre garden. Prem. £1,000 or nr.
15. W. ENGLAND.—Non-panel practice in residential town averaging £2,500. Suitable house.
16. YORKS.—Large town. Receipts £4,000. Panel 2,500-3,000. Good house. Suit 2 friends.
17. SUFFOLK.—1/4 or 1/5 share in old-est. practice of £4,470. Panel 2,300. Prel. a'ship.
18. DEATH VACANCY.—Devon. Beautiful District. Receipts £2,000. Panel about 800. Suit. house and surgery premises. Prem. 1 yr.
19. N. DEVON.—1/4 or 1/5 share in good mixed practice of over £7,000. Nice house. Garden.

LOCUMS TENENS & ASSISTANTS (men & women)  
URGENTLY REQUIRED.—Details on application.

**BRITISH MEDICAL BUREAU**

TAVISTOCK HOUSE SOUTH,  
TAVISTOCK SQUARE, W.C.1.

Telegrams: Triform, Westcent, London.  
Telephone: Euston 1644 and 1645.

All Branches of Medical Accountancy undertaken

1. SUFFOLK.—Share returning over £2,400 in market town. Well-built house, sale or rent.
2. SOMERSET.—Good-class town practice about £2,300 p.a. Small panel. Prem £1,000.
3. SURREY.—Nr. Kingston. Receipts 1942, £1,060. Panel 550. House to rent. Premium £700.
4. CORNWALL.—Market town. Half share of about £2,500 p.a. (short Asstpt.) with succession.
5. LONDON, S.W.—Receipts £1,500-£1,800 p.a. Panel over 1,700. Surgery premises for sale.
6. LINC's.—Country. Receipts 1942 £760, increasing. Small panel. Choice of hse. Good scope.
7. W. OF ENGLAND.—One-half share (about £1,100 p.a.). First-rate town. No panel.
8. SURREY.—Residential district. Receipts abt. £1,400. Small panel. Very nice house to rent.
9. DEATH VACANCY.—S. Wales. Receipts last year £4,400. Panel 2,700. House sale or rent.
10. S. COAST.—Receipts about £2,000. Good-class non-dispensing. No Panel. Very nice house.
11. N. WALES COAST.—Receipts over £1,000. Small Panel. House to rent. Premium £1,250.
12. W. MIDLANDS.—Half-share of £5,400 in good-class town practice. Hospital. Prem. by arrgt.
13. W. SUFFOLK.—Assistantship with view in country practice £3,550 p.a. Share and prem. by arrgt.
14. MIDLANDS.—Share of £1,500 in prosperous town practice. Panel 2,000. Short Assistantship.
15. NOTTS-LINC's, BORDER.—One-half share (or whole practice). Receipts about £5,000. Panel 3,500. Two houses available.
16. S. OF ENGLAND.—Share worth about £2,000 p.a. in country town practice. Short Assistantship.
17. LINC's.—Country practice about £1,200 p.a. Panel 675. Premium house and practice £2,100.
18. N. DEVON.—One-fifth to one-fourth share in country town practice over £7,000 p.a. Premium by arrangement.
19. DEATH VACANCY.—GLOUCESTER.—Receipts £1,050-£1,100 p.a. Panel 1,250. Good house.
20. MIDLANDS.—Town practice about £3,500 (or a one-half share). Panel over 3,000.
21. DEATH VACANCY.—MID-KENT.—Receipts over £1,300 p.a. Nice house. Good scope.
22. WARWICKSHIRE.—Country town. Half-share (£2,000 p.a.) Panel 1,400. Nice house.

Scottish Branch, 21, Alva Street, Edinburgh, 2.  
Manager, G. RUSSELL. Phone: Edin. 23969.

# "OXOID"

The word "OXOID" is the trade mark of OXO Ltd., and is used in connection with their therapeutic preparations both in tablet and fluid extract form.

ORGANO-THERAPEUTICAL PRODUCTS

OXO LABORATORY PREPARATIONS

## VITAMINS

"OXOID" Brand  
**VITAMIN 'B<sub>1</sub>'**  
Tablets & Ampoules

For the treatment of Polyneuritis, Neuralgia, Sciatica, Nervous Debility, Loss of Appetite, Gastric Intestinal Disorders, &c. Specially useful in cases of B<sub>1</sub> deficiency in Pregnancy and Lactation.

In bottles of 25, 100, 250 and 500 tablets of 1 mg. and 3 mg. Also supplied in ampoules of 5 mg. and 25 mg.

"OXOID" Brand  
**VITAMINS 'A' & 'D'**  
Capsules

A safeguard against infection and a prophylactic against the Common Cold. Also prescribed for rapid adaptation of vision in semi-darkness. Supplies anti-rachitic or "Sunshine" vitamin during Pregnancy and Lactation, or for Infants.

In tins of 25 Capsules.

OXO LIMITED, Thames House, London, E.C.4



## 'SULPHAMEZATHINE'

brand of

SULPHADIMETHYLPYRIMIDINE

A new sulphonamide of low toxicity

Technical literature will be forwarded on request.

Powder

Bottles of 1 oz., 4 oz. and 1 lb.

Tablets—0.5 gramme and 0.125 gramme.

Bottles of 25, 100 and 500.

Obtainable through your usual supplier.



A Product of  
IMPERIAL CHEMICAL [PHARMACEUTICALS] LTD.  
Commercial Department: 89 Oxford Street, Manchester, 1

# IMPETIGO

and other Cutaneous Infections

"It appears then that a 5% sulphathiazole ointment will cure impetigo in 4 or 5 days."  
*Lancet*, 1942, I, 422.

To enable this method of treatment\* to be readily undertaken

**CIBAZOL** Regd. Trade Mark  
*Sulphathiazole Ciba*  
**OINTMENT**

containing 5% Cibazol has been introduced.

\* See also  
*J. Amer. med. Ass.*, 1941, 117, 1415  
and *Brit. med. J.*, 1942, I, 12, and  
1943, I, 318.

Containers of 1 oz.

A BRITISH PRODUCT

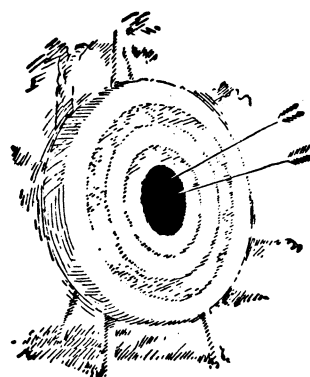
A copy of the Cibazol Booklet describing the chemistry, pharmacology, chemotherapeutic action and clinical application will be sent on request to members of the Medical Profession.

Telephone :  
Horsham 1234



Telegrams :  
Cibalabs, Horsham

THE LABORATORIES, HORSHAM, SUSSEX.



TRADE  
MARK

**'SECONAL'**

BRAND

Sodium Propyl-Methyl Carbonyl Allyl  
Barbiturate

'Seconal' improves the chance for therapeutic accuracy in prescribing a hypnotic.

When used for pre-anaesthetic medication 'Seconal' allays apprehension and induces sleep without materially affecting anaesthesia except during the period when the patient is being put to sleep. The comparatively short action of this hypnotic is largely expended during the course of the operation.

'Seconal' has been found to be of value for pre-anaesthetic preparation of children, and its use has been suggested preliminary to spinal puncture and other minor surgical procedures.

'Seconal' is supplied in  $\frac{3}{4}$ -grain and  $1\frac{1}{2}$ -grain capsules in packages of 40 and 500.

ELI LILLY AND COMPANY LTD.

BASINGSTOKE AND LONDON