

THE TREATMENT OF SCABIES with **BENZEVAN** CREAM

Before being issued Benzevan Cream was submitted to a number of Public Health Authorities for clinical trial. All the reports received agree that this vanishing cream type of preparation provides an effective, clean and economical treatment for scabies.

NOTICE
BENZEVAN CREAM
must not be confused
with **BENZEVAN** which
is a liquid application.

Prices and Packages
Jars of 2 oz. - - each 2/11
Jars of 12 oz. - - each 10/-
Jars of 2 lb. 14 oz. each 35/-

Prices inclusive of Purchase Tax. Subject to 10 per cent. Professional Discount.
Special terms for Public Health Departments.

Further details sent on application to: { **London** - Home Medical Dept., Bartholomew Close, E.C.1
Liverpool - Home Medical Dept., Speke, Liverpool, 19

MEDICAL EVANS PRODUCTS

Made in England by

EVANS SONS LESCHER AND WEBB LTD., LIVERPOOL AND LONDON M37C

Convalescents must have sleep . . .

*..Bourn-vita
will help
them to-day*

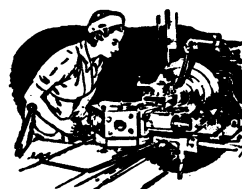


The nerve-soothing qualities of Bourn-vita help wartime convalescents to get the most out of the sleep they need so much. The Vitamin B phosphorus and calcium in Bourn

vita are all valuable nerve foods, and help to induce a restful, *natura* sleep. This nourishing food-drink, prepared by Cadburys, is especially light and digestible.

CADBURY'S BOURN-VITA

FOR DEEP, RESTORING SLEEP



THE WAR-WORKER

Environmental and occupational changes, in many cases, result in menstrual difficulty. The milder forms of primary dysmenorrhoea respond well to treatment with sedatives and analgesics of a salicylate nature.

Of these, 'Anadin,' a finely-balanced compound of aspirin, phenacetin and caffeine, is especially well suited to the alleviation of both uterine pain and cephalalgia.

The knowledge that this product is not habit-forming ensures absolute confidence during prolonged administration, should this be necessary.

ANADIN Tablets

ANADIN LIMITED, 12, CHENIES STREET, LONDON, W.C.1

INSULIN HOSPITAL PACKING

Important notice

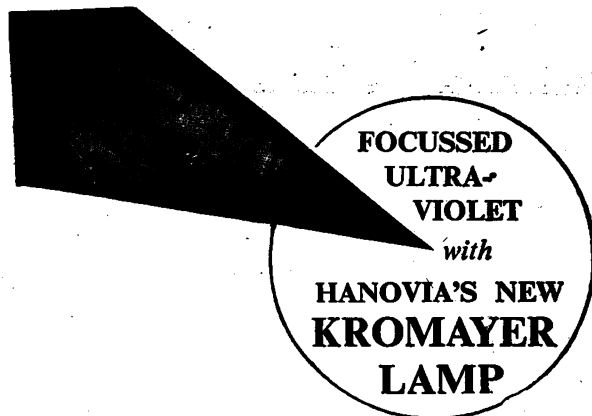
Improved production methods enable the makers of Insulin A.B. and Insulin 'Wellcome' brand to reduce the prices of these products to the level of those now in force for H-A-B Insulin and Insulin Hospital Packing (B.W. & Co.).

This price reduction will operate on and after 1st January, 1944, when the manufacturers will cease to issue H-A-B Insulin and Insulin Hospital Packing (B.W. & Co.). After that date Insulin A.B. or Insulin 'Wellcome' brand will be supplied on all occasions when insulin is ordered.

ALLEN & HANBURYS LTD.

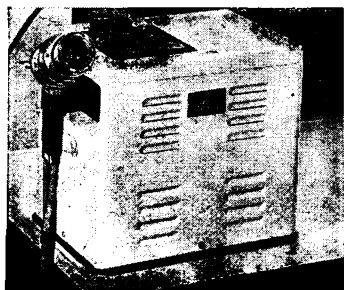
THE BRITISH DRUG HOUSES LTD.

BURROUGHS WELLCOME & CO.



The first clinical use of ultra-violet rays was in topical applications, and to-day focal actinotherapy finds ever-widening use with the new high-power, self-starting SK 200 burner fitted to the classical Kromayer Lamp. This latest Model VI is simplified to a very compact and economical unit, utilising tap-cooling, which gives the operator every facility for producing regenerative focal reactions speedily and conveniently anywhere on the skin or the accessible tissues and membranes.

We shall be glad to send full descriptions on request (please enclose 1d. stamp to comply with paper regulations).



THE KROMAYER LAMP MODEL VI

SOME CLINICAL USES OF THE KROMAYER LAMP

Injuries: Industrial, gunshot, or operation wounds heal rapidly under graduated local irradiations. 'A bewildering variety of open sinuses seem to be favourably affected by ultra-violet radiation.'

Nose and Throat: In chronic catarrh or rhinitis the Kromayer Lamp with a nasal applicator assists greatly in restoring healthy conditions in the nasal membranes. Many hay-fever cases remain symptom-free after such applications. Throat carriers of diplococci or streptococci often clear up after topical irradiation combined with other measures.

G.U.: The Kromayer Lamp works equally well for all types of acute epididymitis; tubercular, gonorrheal or traumatic. Other indications include: prostatitis, orchitis, chancroid and adenitis.

Skin: All dermatologists know the Kromayer Lamp.

HANOVIA • LTD

The specialists in actinotherapy equipment

SLOUGH

M123/1

The new Antacid



FREE TO DOCTORS

Full-size bottle and
technical literature
sent on request

WESTMINSTER LABORATORIES LTD.
PENN • BUCKS



CONFIDENCE . . .

Johnson & Johnson began the production of surgical sutures in 1887 and for over 50 years have kept ahead of the times in manufacturing technique.

Ethicon Sutures are heat-sterilized, uniform in calibre and extraordinarily strong, particularly at the knot. They have thus won the confidence of surgeons all over the world.

Johnson & Johnson
(GT. BRITAIN) LIMITED

SLOUGH, BUCKS.

** Manufactured under Ministry of Health Licence No. 38*

SPENCER SUPPORTS

are Individually Designed for these Conditions

HERNIA :

For cases of inoperable hernia a Spencer provides support with complete comfort and safety. If operation is inadvisable a Spencer will control a reducible or support an irreducible hernia, and restore the patient to reasonable normal activity. Spencer Supports are simple and easy for patients to adjust.

POST-OPERATIVE :

Many surgeons prescribe either the Spencer Surgical Post-operative Belt or Surgical Corset as a precaution against accident or injury during convalescence.

SACRO-ILIAC and LUMBO-SACRAL :

Spencer Supports are designed to effect immobilization of the involved joints and improve posture. A Spencer Support, designed individually for the patient to provide positive back, abdominal, and pelvic support, produces remarkable results in treatment, enabling patients to carry on their normal activities.

ENTEROPTOSIS and INTESTINAL STASIS :

Where these conditions are known to exist and support is needed, a Spencer Visceroptosis Support is an accepted corrective measure. The Spencer Support provides a substitute abdominal wall and elevates the organs as nearly as possible to normal position, also effecting a marked postural improvement.

PRE-NATAL and POST-NATAL :

Spencer Maternity Supports fit perfectly, provide gentle support and restful comfort. In many cases they relieve nausea and backache, when not pathological, and lessen or control sacro-iliac and lumbo-sacral strain.

NEPHROPTOSIS :

A Spencer Support for Nephroptosis is designed to support the abdomen from below, upward and backward. A Kidney pad is provided as prescribed by Doctor.

SPINAL ABNORMALITIES :

Spencer Spinal Supports for condition of Kyphosis, Scoliosis, Pott's Disease, Fracture, Spondylolistheses, Spondylarthritis are individually designed on medical prescription for the specific condition present in the individual patient.

Because each Spencer is individually designed for the specific condition and made from the detailed measurements and posture description of the patient, exact fit and restful comfort are assured, and the support will not ride up or slip out of place. All Spencer Supports are designed to correct mal-posture, provide abdominal uplift and to place the pull on the pelvic girdle, not on the spine at, or above, the lumbar region. They are scientifically designed for simple and easy adjustment.

Spencer Supports improve appearance, are light in weight, easily laundered, and are guaranteed NEVER to lose their shape.

SPENCER (BANBURY) LTD.

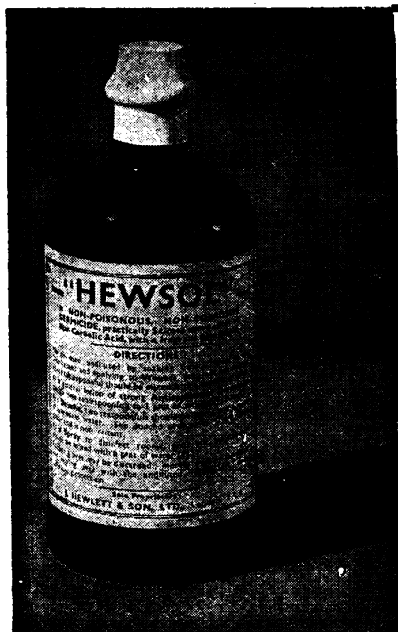
Consultant Manufacturers of

SURGICAL, THERAPEUTIC AND ORTHOPAEDIC SUPPORTS

Spencer House - Banbury - Oxfordshire

Spencer (Banbury) Ltd. is entered in the Board of Trade Register under Board of Trade regulations controlling all Textile-made Surgical Support Manufacture.

B.M.J.11/43



**For
WOUNDS,
CUTS,
and
SCRATCHES,
LOTIONS,
DOUCHES,
SPRAY, Etc.**

HEWSOL is non-poisonous and can be safely used by children.

A very efficient germicide, pleasant to use, and with high bactericidal power.

NOT SUPPLIED TO THE PUBLIC

Sample from :

C. J. HEWLETT & SON, LTD.,
Manufacturing Chemists,
LONDON, E.C.2.

VITAMIN THERAPY

for Mental and Physical fatigue

Modern research clearly indicates the value of vitamins for combating mental strain and physical fatigue when the diet shows deficiencies.

Restricting the intake of vitamin B₁, among a group of healthy people receiving adequate amounts of all the other food factors, produced marked symptoms of depression, sluggishness, indifference, fear, decreased mental alertness and physical fatigue. These rapidly disappeared when vitamin B₁ was restored. Other subjects in apparent good health on a vitamin B₁ intake of 300 i.u. daily showed increased alertness and an almost doubled capacity for physical work when the daily intake was increased to 600 i.u.

A Natural Source of the B Complex

The difference between the average intake of vitamin B and the optimum physiological needs may be considerable, even in a diet which at first sight appears to be a good one, and there is little capacity for storage of the vitamin by the body.

Bemax provides the most dependable, convenient and pleasant method of ensuring an ample supply of vitamin B₁, together with the other factors of the vitamin B complex, vitamin E and available iron.

BEMAX

Vitamins Ltd. (Dept. B.B.), 23, Upper Mall, London, W.6.

THE

Convenient
BARIUM SULPHATE
FOR X-RAY
DIAGNOSIS

VICTOR BARIUM CREAM

Dilute with water and drink... administration is as easy as that with Victor Barium Cream. Its exceptional suspension properties, ensured by the use only of the purest, most finely-divided sulphate, and its palatable orange flavour make this cream the ideal opaque for radiography of the G.I. tract. In sealed glass jars—9½ lb. nett weight, 15/6. Also Victor pure Barium Sulphate in 1 lb. individual packages, 2s. 9d.

VICTOR X-RAY CORPORATION LTD

15-19 Cavendish Place, London, W.1

LANGHAM 4074

BIRMINGHAM BRISTOL GLASGOW MANCHESTER DUBLIN
BELFAST EXETER LEEDS SHEFFIELD NOTTINGHAM LIVERPOOL



Because of their exceptional smoothness **NYLON** synthetic sutures are more easily withdrawn than natural silk-worm gut sutures.

Strength, elasticity and toughness are other properties of **NYLON**, which is water resistant and does not become soggy in water or steam. Available in 14-inch lengths from the usual medical supply houses.

NYLON

(non-absorbable)
SUTURES

IMPERIAL CHEMICAL INDUSTRIES LTD.

PROLONGED SURFACE AND INFILTRATIVE ANALGESIA

● 'Anethaine' Brand of Amethocaine Hydrochloride is a powerful analgesic, effective, but in different strengths, both by surface application and by injection. It has the advantage of prolonged action, while in the strengths recommended, its toxicity is low. Solution of adrenaline should be added to diminish toxicity (in addition to its more obvious actions) when a vascular surface is involved or when injection is performed.

For surface analgesia 'Anethaine' is issued in three forms:— (1) A 2 per cent. solution (not for injection); (2) A powder; (3) A solution tablet.

SURFACE ANALGESIA

Some examples of everyday use as a surface analgesic normally applied in strengths of 0.25 to 2 per cent:—

- (a) Ophthalmology. 0.25 to 1 per cent. solution.
- (b) Oto-Rhino-Laryngology 1 to 2 per cent. solution.

- (c) Prior to stitching of wounds. Brief application of 1 per cent. solution, not more than 5 cc., to the edges of the wound.
- (d) For many painful conditions of the mouth, nose and throat. Apply with a swab soaked in 0.1 to 1 per cent. solution, or paint.
- (e) For relief of pain in rectal or anal conditions, 3 per cent. ointment, or 2 per cent. suppositories.

INFILTRATIVE ANALGESIA

Strengths used for this purpose should never exceed 1 in 1,000, and are more usually 1 in 2,000 to 1 in 4,000.

The 'ANETHAINE DRY AMPOULE,' containing 100 mg. Amethocaine Hydrochloride as a sterile powder is specially prepared for this purpose and opens up a wide field in difficult abdominal, thoracic and traumatic surgery requiring prolonged analgesia with full muscular relaxation. Analgesia lasting three hours is obtained.



Solution, 2 per cent. 25 cc.
Powder, 1 and 5 gm.
Solution Tablets, 10 x 0.1 gm.

ANETHAINE

AMETHOCAINE HYDROCHLORIDE

GLAXO LABORATORIES LTD., GREENFORD, MIDDLESEX. BYRON 3434

ASTHMA

Cardophylin

(THEOPHYLLINE-ETHYLENEDIAMINE)

and its significance as a promoter of

DILATATION OF THE BRONCHIAL MUSCULATURE

Laboratory experiments have demonstrated that in the experimental animal the bronchial dilatation produced by theophylline-ethylenediamine in a dilution of 1:2000 is 75% of the normal area.

CARDOPHYLIN has been shown to be a reliable and effective medium for combating status asthmaticus; even after there has developed a refractoriness to adrenaline, It constitutes a highly important addition to the list of anti-asthmatic drugs.

CARDOPHYLIN gives gratifying results in the treatment of cardiac asthma and of respiratory disturbances in general, as well as of bronchial asthma.

Tablets, Ampoules and Suppositories

★
A NEW BOOKLET CONTAINING
NUMEROUS EXTRACTS
FROM PUBLISHED REPORTS
SENT ON REQUEST TOGETHER
WITH SAMPLES.

★

WHIFFEN & SONS LTD • CARNWATH ROAD • FULHAM • LONDON, S.W.6

Indications for the use of
**B.D.H. PREPARATIONS OF THE
 MALE SEX HORMONE**

TESTOSTERONE PROPIONATE B.D.H.
(For Intramuscular Injection)

METHYL-TESTOSTERONE B.D.H.
(For Oral Administration)

IN THE MALE

Eunuchoidism, impotence, prostatic hypertrophy and in angina pectoris.

IN THE FEMALE

Irregular uterine bleeding and chronic mastitis due to excessive activity of the ovarian follicle.

Tablets of Methyl-testosterone B.D.H. are usually employed as supplementary treatment to the injection treatment with Testosterone Propionate B.D.H. in all the above conditions.

Details of dosage and other relevant information concerning Testosterone Propionate B.D.H. and Methyl-testosterone B.D.H. will be gladly supplied on request.

THE BRITISH DRUG HOUSES LTD. LONDON N.1

SHor/E/120

**WASHING
 AMPOULES
 with
 FILTERED
 WATER**

Ampoules and vials used as containers for Boots Medical Products being thoroughly washed on rotating machines. Each vial receives several washings both internally and externally with filtered water.

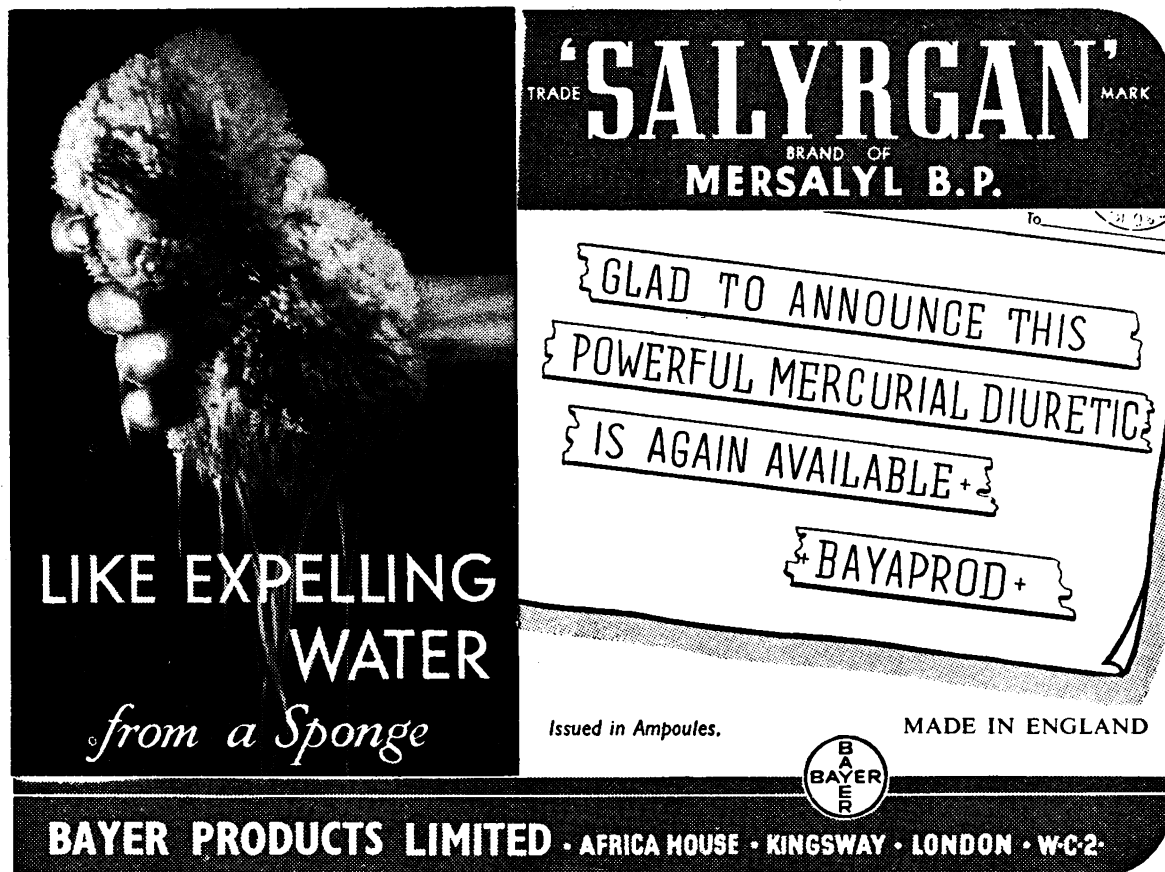
MEDICAL



PRODUCTS

BOOTS PURE DRUG COMPANY LIMITED NOTTINGHAM

B907-63



TRADE MARK

'SALYRGAN'

BRAND OF
MERSALYL B.P.

To

GLAD TO ANNOUNCE THIS
POWERFUL MERCURIAL DIURETIC
IS AGAIN AVAILABLE+

+BAYAPROD+

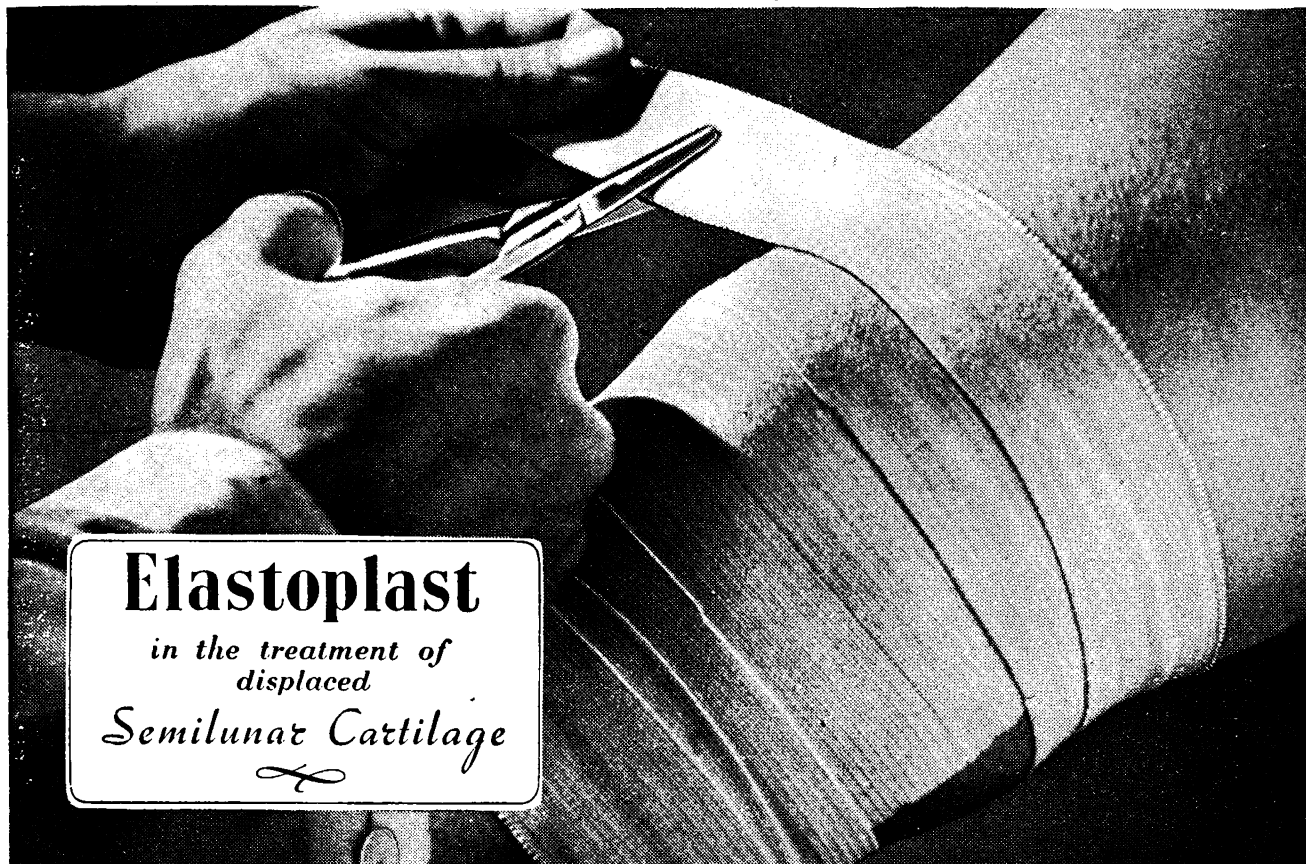
LIKE EXPELLING
WATER
from a Sponge

Issued in Ampoules.

MADE IN ENGLAND

BAYER

BAYER PRODUCTS LIMITED • AFRICA HOUSE • KINGSWAY • LONDON • W.C.2



Elastoplast

*in the treatment of
displaced
Semilunar Cartilage*

'Elastoplast' Bandages and Plasters are made in England by T. J. Smith and Nephew Ltd., Hull



At the heart of an industry

The primary function of our Medical Information Department, as its name denotes, is to supply information to the medical profession.

In the course of time these duties have resulted in the collation of a large amount of valuable material, published and unpublished, housed in our library at Dagenham. The personnel of the Department is in close contact with clinicians throughout the British Empire and with research chemists, pharmacologists, bacteriologists, etc., actively engaged in the investigation and development of new drugs.

The purpose of this announcement is to remind the medical profession that our Medical Information Department is always at its service to deal with inquiries on our products and on allied topics.

CODES:—A.B.C., 6th Bentley's & Mosse's

TELEGRAMS:—Bismuth, Phone, London

TELEPHONE:—Ilford 3060



MEDICAL SPECIALITIES

Manufactured by MAY & BAKER LIMITED Distributed by
PHARMACEUTICAL SPECIALITIES (MAY & BAKER) LTD DAGENHAM

6220

BURNS IN THE FRONT LINE



The Doctor and Nurse in the Factory are as much in the front line as their colleagues in the Services. In the Factory First Aid Clinic and the Casualty Clearing Station, a quickly applied and suitable dressing for burns is an objective which has long been sought. In both it is necessary to consider not only the immediate relief of the patient, but also the end results.

Recent experience in Tobruk on this very point showed that the best dressing was one that embodied a chemotherapeutic agent in a greasy base.

(LANCET, MAY 15TH, 1943, PAGE 609.)



SULPHANILAMIDE TULLE (*Optrex Brand*) consists of a wide mesh gauze impregnated with 10% sulphani-
lamide in a soothing and healing greasy base. It is so packed as to be easily carried, readily available for immediate use, and yet suitable for storage until required.

SULPHANILAMIDE TULLE (*Optrex Brand*) thus finds its place confirmed as the immediate dressing for burns in accordance with the most modern experience.

SULPHANILAMIDE TULLE (*Optrex Brand*) achieves immediate protection, speed of application, drainage, comfort in conveyance to Hospital, control of infection, easy removal for further treatment, quick healing and uncomplicated results.

Full size Trial Tin will gladly be sent free of charge on receipt of signed order, as required under the Poison Regulation, by:—

Phas. F. Haekray LTD

Sole Distributors

THE OLD MEDICAL SCHOOL, PARK STREET, LEEDS AND
252 REGENT STREET, LONDON, W.1

NO FACTORY SHOULD BE WITHOUT SULPHANILAMIDE TULLE (*Optrex Brand*)



When Iron is Indicated...

IN TWO VARIETIES—
PLAIN and HOG'S STOMACH

For the prevention and treatment of anæmias of pregnancy, chronic blood loss or iron deficiency, 'Plastules' provide a medication which is well tolerated, easy to take and effective in small doses.

'Plastules' provide a supplementary source of iron to help maintain a positive iron balance during the period of pregnancy.

'Plastules' is available in two varieties:

- 'Plastules' Plain and
- 'Plastules' with Hog's Stomach.

'PLASTULES'

BRAND *Haematinic Compound* REGD.

For Anaemia and Debility

JOHN WYETH & BROTHER LIMITED

(Sole distributors for Petrolagar Laboratories Ltd.)

Clifton House, Euston Road, London, N.W.1

Palatable Refreshing & EFFECTIVE

Vigorous purgation by harsh agents is not needed for normal occasions. All that is required is a pure, palatable, refreshing and healthy aperient beverage such as ENO'S 'Fruit Salt.' Its laxative action depends only on reinforcing the natural process of osmotic diffusion. ENO'S does not irritate the intestinal nerve-endings; nor does it cause any disintegration of the delicate mucus. The regular, complete evacuation encouraged by ENO'S is due simply to the retention of sufficient bulk within the alimentary canal to stimulate peristaltic action.



J. C. ENO LTD.

MEDICAL DEPT. • GREAT WEST ROAD
BRENTFORD • MIDDLESEX

MIASMATIC

THE atmosphere in blacked-out factories, badly ventilated vehicles, crowded shelters and places of entertainment can, perhaps inelegantly but not inaccurately, be described as miasmatic. It is a prolific source of the common cold and influenza and it aggravates sinus troubles.

Distressing enough in normal circumstances, such conditions to-day are more than distressing. Either the sufferer stays away from work and the Nation is thus robbed of precious man-power, or praiseworthy he attempts to keep going — and infects others.

Perhaps the most effective method of counter-acting infections of the nose and throat is the early application of

ALBUCID SOLUBLE NASO-PHARYNGEAL SOLUTION

to the mucosa of the upper respiratory tract. This consists of a 10% solution of soluble sulphacetamide with a surface tension of 37 dynes per sq. cm., thus ensuring its even and rapid dispersal and penetration.

It is non-toxic and non-irritant, entirely suitable for application either as a throat paint or in any of the usual sprays or atomisers.

IN BOTTLES OF ONE FLUID OUNCE

FULLER DETAILS AVAILABLE TO INTERESTED MEDICAL PRACTITIONERS ON REQUEST.

'Albucid' is the registered name which distinguishes sulphacetamide of British Schering manufacture.



BRITISH SCHERING LIMITED

85-190, HIGH HOLBORN, LONDON, W.C.1.

Genatosan Ltd. offer a choice of:—

SEDATIVE

Even in apparently identical conditions drug response varies from patient to patient. The clinician is the only sound judge of what is the best remedy or adjuvant for the treatment of a particular case: Genatosan, therefore, offer him a choice of remedy by placing before him alternative products designed for use in particular conditions.

With Sedatives, for instance, they offer a choice of four products:—

BARBITONE A well-established sedative for use in nervous excitability.

CARBROMAL Useful in insomnia and with no habit forming tendencies.

PHENO-BARBITONE A more potent preparation, especially valuable in epilepsy.

B.V.U. TABLETS (*Bromoisovalerylurea*)
A safe sedative for nervous manifestations.
For general use in non-psychopathic cases.

Further information about any or all of these products will be sent to any doctor on request.
GENATOSAN LTD. LOUGHBOROUGH, LEICESTERSHIRE

JOHNSON & SONS : MANUFACTURING CHEMISTS LTD. : HENDON : N.W.4

Arvitin

SILVER VITELLIN B.P.C.
Argent. Protein. Mit.

For Ophthalmic prescriptions in all cases where SILVER VITELLIN is specified. A sample will be sent, if desired, free of all cost. It will save time, if, when writing for the sample, you will mark on your letter, or post card, the words Department A.A. Postal.

A British Standardized Product

JOHNSON & SONS : MANUFACTURING CHEMISTS LTD. : HENDON : N.W.4

Combating “SULPHONAMIDE- FASTNESS”

The value of urea-sulphonamide-therapy introduced into this country by the Watford Chemical Co., Ltd., early in 1942, for counteracting sulphonamide inhibitors, has been confirmed by recent clinical reports in America and elsewhere. SULPHAMIDO-UREA, a compound of sulphanilamide and urea, is available in 0.5 gramme tablets. Has high bacteriostatic activity. Used to prevent and treat the increasing number of cases due to sulphonamide-resistant organisms. Can be employed wherever sulphanilamide therapy is indicated and where certain other sulphonamides have proved ineffective.



Sulphamido-urea powder for topical application will be available shortly.

WATFORD CHEMICAL CO. LTD.

50 SOUTH AUDLEY STREET, GROSVENOR SQ., LONDON, W.1
Telephone: Grosvenor 1016

Distributors in Eire:

MAURICE FITZGERALD & COMPANY LTD.
8-9, Temple Lane, Dublin, Eire

NASAL CATARRH

HEAD COLDS

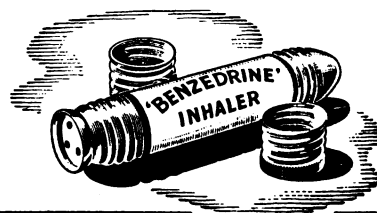
SINUSITIS

*Signposts for***'BENZEDRINE'
INHALER**

The vapour of 'Benzedrine' Inhaler diffuses throughout the entire nasal cavity, reaching and relieving congestion wherever it exists. Used in the early stages of nasal infection it helps to abort or shorten conditions that might otherwise proceed to more serious complications. Compact, convenient, effective — 'Benzedrine' Inhaler is of inestimable service in preventing loss of time and efficiency through head colds and other rhinological conditions.

Samples and literature on request.

MENLEY & JAMES LIMITED
123, COLDHARBOUR LANE • LONDON • S.E.5



From single-cell selection to
large-scale production

D.C.L. VITAMIN B₁ YEAST

is subjected to the strictest biological and chemical control. This special yeast contains approximately:

Vitamin B ₁	300 International Units per gram. (900 micrograms)
Riboflavin	50 micrograms per gram.
Nicotinic Acid	250-350 micrograms per gram.
Vitamin B ₆ (Pyridoxin)	25-50 micrograms per gram.
(3 D.C.L. Tablets equal 1 gram)	

Supplies are meantime limited, but every endeavour will be made to meet requests from members of the Medical profession.

THE DISTILLERS COMPANY LTD., EDINBURGH



Unfortunately owing to restrictions silk qualities are no longer available but

ALL QUALITIES OF THREAD HOSIERY SEAMLESS, SEAMED, AND ALSO THE NEW TWO-WAY STRETCH LASTEX ARE STILL AVAILABLE.

All garments are specially made to meet individual measurements and requirements.

Elastic hosiery orders will be executed with as little delay as possible.

Further particulars and measurement forms from—

H. E. CURTIS & Son, Ltd.

Fitting Rooms: 4, Mandeville Place, London, W.1.
Tel.: WELbeck 2921. New Factory Woodcock Hill, Rickmansworth, Herts. Tel.: Rickmansworth 3501.

RHINITOL

The modern method of treating
COLDS

NASAL CATARRH, CONGESTION, Etc.
Completely free from irritant and toxic effects.

Reports from Practitioners show that the relief from Rhinitol is immediate and the effect lasting.

FORMULA	
Ephedrine	... 0 25
Chlorthymol	... 0 01
Ext. Matricaria	3 20 9 0
Menthol	... 0 35
Eucalyptol	... 0 5
Camphor	... 0 1
Vasogen ad	100 0

TRIAL PACKAGES FREE.

E. T. PEARSON & CO., LTD., Biological and Manufacturing Chemists. MITCHAM, SURREY.

Clinical reports show, and experience has proved, that

DIMOL

PREPARATIONS

combat effectively all bacterial infections.

DIMOL controls the intestinal flora.

Samples and literature on request

DIMOL LABORATORIES LTD.,
34-40, Ludgate Hill, London, E.C.4

LESLIES ZŌPLA STRAPPING

A first-class product for surgical use. Very strong cloths, the mass is powerfully adhesive. White and flesh cloths, also on elastic cloth. A great favourite.

ZŌPLA ON WHITE FELT

Very popular for padding and protective purposes.

Does not get hard in use.

ZŌPLA-BAND

(Elastic Adhesive Bandage)

Ideal where Elasticity is essential.

Manufactured by:

LESLIES LTD.

**HIGHAM HILL ROAD
WALTHAMSTOW
LONDON, E.17**

BOTTLED VEGETABLES FOR BABIES

—ready strained

Spinach, Carrots } Steam-cooked
Beetroot, Prunes } Vacuum-packed
Also Bone and Vegetable Broth

BRAND'S vegetables, specially grown and picked at their prime, are superior to home-prepared vegetables. Steam-cooking in vacuum, and vacuum-packing conserve vitamins and minerals.

A special sieving process ensures that no particle of irritant fibre remains.

Busy, war-time mothers will welcome these new Baby Foods which relieve them of a very tedious job. The name of Brand & Co. Ltd. is a further recommendation.



BRAND'S BABY FOODS

7 $\frac{1}{2}$ d. a jar

Prepared by the makers of **BRAND'S ESSENCE**

WRIGHT'S PUBLICATIONS

Second Edition. Fully Revised and Enlarged.

AN ATLAS OF THE COMMONER SKIN DISEASES

By Henry C. G. Semon,
M.D., M.R.C.P.

Photography under the Direction of
Arnold Moritz, M.B., B.C.

7 x 9 $\frac{1}{2}$ in. 284 pp. 42s. net; postage 7d.

THE SURGERY OF THE ALIMENTARY TRACT

By Sir Hugh Devine,
M.S., F.R.C.S., F.A.C.S.

6 x 9 in. 1,060 pp. 690 illustrations, many in colour. 63s. net; postage 9d.

Fifth Edition. Fully Revised SYNOPSIS OF SURGICAL ANATOMY

By Alexander Lee McGregor,
M.Ch., F.R.C.S.

4 $\frac{1}{2}$ x 7 $\frac{1}{2}$ in. 664 pp. 648 illustrations
25s. net; postage 7d.

Bristol :
JOHN WRIGHT & SONS LTD
London :
SIMPKIN MARSHALL (1941) LTD.

PRESCRIBED FOR OVER 40 YEARS SULPHAQUA BATH CHARGES

In treatment of
SKIN DISEASES
GOUT, RHEUMATISM, Etc.
Relieve Pain and Intense Itching
Soothing and Sedative in Effect

Literature on request

The S. P. CHARGES CO.
ST. HELENS, LANC.

Obtainable from all Chemists.

Iron Jelloids

The Iron Jelloid Company, Ltd., ask the indulgence of the medical profession in regard to any difficulty they or their patients may have in obtaining Iron 'Jelloids,' which, for the time being, are available only in limited quantities of the 1/4 size. Price includes Purchase Tax.

The Iron Jelloid Company, Ltd.,
King George's Avenue, Watford, Herts.

Rx

The Emulsion for Children

In many of the wasting diseases of childhood, a sensitive, irritable stomach and intestines preclude proper nourishment.

Under the administration of Angier's these organs become pacified and retentive, digestion is strengthened, and the assimilation of food is normal and complete. It is oftentimes surprising how quickly pale, flabby, weakly infants and children gain flesh, strength and vitality when they are given the Emulsion systematically.

We confidently urge its trial in marasmus, scrofulosis, anæmia, and in the malnutrition associated with acute infectious disease. It is likewise one of the most useful and dependable remedies for the treatment of bronchitis, whooping cough and the respiratory affections associated with measles and scarlet fever.

The pleasant, cream-like flavour of Angier's and its ready miscibility with milk or water, make it eminently suitable for administration to children.

THE ANGIER CHEMICAL COMPANY, LIMITED, 86, CLERKENWELL ROAD, LONDON, E.C.1

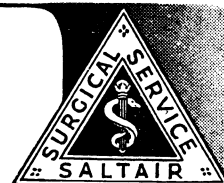
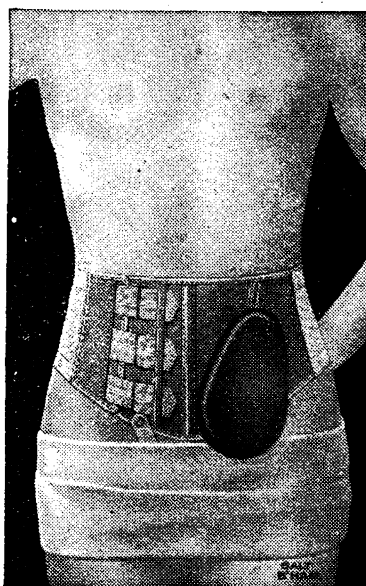
ANGIER'S

Emulsion

COMFORT

FOR THE COLOSTOMY PATIENT

SALTS' Patent COLOSTOMY BELT provides that sorely needed comfort for the patient which is the Doctor's great consideration. This is achieved by this Appliance which incorporates every modern improvement. The Receiver is detachable and sterilizable by boiling; the bag can be easily removed without removal of belt; the bag is easily emptied and washed; there are no crevices or metal fittings to hold fæces; smell is reduced to a minimum; bags are easily and economically replaced. AND the belt is less bulky than the old style. Salts' Corset and Belt Book gives fuller details with handy Measure/Order forms for the Doctor's use.



LONDON ADDRESS: 1, STANLEY HOUSE, 103, MARYLEBONE HIGH ST., W.1. Tel.: WELBECK 3034

SALT & SON Ltd.

BIRMINGHAM. 2

Guarantee

"We guarantee to alter exchange or accept the return of any appliance without cost ordered by the Medical Profession, if not found suitable within fourteen days from date of supply."

Salt and Son Ltd.

NOTICE—Applications for vacancies advertised should, except where otherwise specified, state name, address, age, nationality, qualifications with dates, and be accompanied by copies of three recent testimonials with short statement of experience and appointments held. Unless closing date is stated applications should be sent at once.

INDIAN MEDICAL SERVICE. Recruitment of Women Medical Officers.—The Government of India are prepared to recruit a limited number of women medical officers for service with the Indian Medical Service for the duration of the war. Applicants must be British subjects, of not more than 45 years of age, and those selected will be appointed in the rank of Lieutenants. Antedate of seniority may be granted up to a maximum period of 61 years in respect of resident hospital appointments, higher qualifications, and/or professional experience. The antedate will count for pay and promotion, but, in the case of candidates recruited in this country, higher rank will not be assumed until the date of disembarkation in India. On termination of service, a minimum gratuity is guaranteed to those officers who complete one year of service, viz., Rs. 2,000 to officers whose registrable medical qualification is dated before January 1, 1940, and Rs. 1,000 to those who qualified after that date, plus one month's pay for each further completed year of Army Service. Further particulars regarding rates of pay, etc., may be obtained from the Medical Adviser, India Office, London, S.W.1, or from the Secretary, Military Department, India Office, to whom all inquiries should be addressed.

SOUTHERN RHODESIA MEDICAL SERVICE. GOVERNMENT MEDICAL OFFICER.—Applications are invited from fully qualified, male medical practitioners for appointment as Government Medical Officer in the Southern Rhodesia Medical Service. Only single applicants should apply as married men will not be considered. Salary will be on the scale £600 by £25 to £750 per annum. There is also a senior grade (£750 by £25 to £900), to which promotions are made as vacancies occur. Salary will commence from the date of assumption of duty in Southern Rhodesia. In addition private practice is allowed. Candidates should have at least two years' postgraduate experience in medicine, and preferably surgery. The successful applicant will be required to sign an agreement for three years' service in the first instance, and thereafter may make application to be placed in the pensionable establishment. A free steamship passage to Cape Town and first-class railway ticket thence to Southern Rhodesia will be provided. Canvassing, either directly or indirectly, will disqualify applicants. Applications, stating age, qualifications, and experience, together with copies of testimonials, should reach the Official Secretary, Office of the High Commissioner for Southern Rhodesia, Rhodesia House, 429, Strand, London, W.C.2 (from whom further particulars and application form may be obtained), not later than November 27, 1943.

LANCASHIRE COUNTY COUNCIL. Wrightington Hospital, near Wigan. **JUNIOR MEDICAL OFFICER (B2).**—Applications invited for Junior Resident Medical Officer (B2) at the Wrightington Hospital, containing 288 beds for non-pulmonary tuberculosis (adults and children), 20 beds for "combined" pulmonary and non-pulmonary cases, and 44 beds for pulmonary cases. R and W practitioners who now hold A posts may apply. If held by an R or W practitioner the appointment will be limited to six months, otherwise one year. The medical staff consists of medical superintendent, three assistants, two consultant orthopaedic surgeons and other visiting surgeons. Excellent facilities for reading for M.D. Salary £300 per annum, plus bonus, together with board, single quarters, and laundry. Forms of application and conditions of appointment from Central Tuberculosis Office, County Offices, Preston. Mark letters "Wrightington M.O."

ESSEX COUNTY COUNCIL. Medical Staff.—Applications are invited from registered male medical practitioners for the undermentioned appointments at the Essex County Council Hospital, Broomfield, which contains 320 beds for the treatment of male patients suffering from pulmonary or surgical tuberculosis.

SECOND ASSISTANT MEDICAL OFFICER (B1). Applicants should have held house appointments and have had experience in the treatment of tuberculosis. The appointment will be limited to a period not exceeding four years. Suitably qualified R practitioners holding B2 appointments are invited to apply. Applications from R practitioners now holding B1 appointments cannot be considered unless the applicants have been rejected by the R.A.M.C. Salary at the rate of £350 a year, rising, subject to satisfactory service, by annual increments of £25 to £425 a year, together with residential emoluments valued at £160 a year.

JUNIOR RESIDENT MEDICAL OFFICER (B2). Applicants may be R practitioners who now hold A posts. If held by an R practitioner, the appointment will be limited to six months, otherwise it will be for a period of twelve months. The salary is at the rate of £250 a year, together with residential emoluments valued at £160 a year. Forms of application may be obtained from the undersigned to whom they should be returned completed, accompanied by copies of three recent testimonials and in envelopes endorsed with the name of the post sought, not later than November 30, 1943. Canvassing, whether directly or indirectly, is forbidden.—John E. Lightburn, Clerk of the County Council, County Hall, Chelmsford.

BOROUGH OF ILFORD. Isolation Hospital. **ASSISTANT MEDICAL OFFICER OF HEALTH AND RESIDENT MEDICAL OFFICER (Temporary Appointment).**—Applications are invited from qualified medical practitioners for the above temporary appointment at a salary of £700 per annum, plus a temporary war cost-of-living bonus of £33 10s. per annum, such salary to be inclusive of emoluments, in respect of which deduction or salary adjustment will be made. Candidates should be over military age or otherwise exempt from service with the Forces for reasons which must be stated in the application. The person appointed will be required to work under the direction of the Medical Officer of Health and to act as Resident Medical Officer at the Council's Isolation Hospital and Sanatorium, and perform such other duties as may be allocated to him by the Medical Officer of Health. The appointment will be subject to the provisions of the Local Government Superannuation Act, 1937, and to the Staff Regulations of the Council for the time being in force. The selected applicant will be required to pass a medical examination by and to the satisfaction of the Medical Officer of Health. The appointment will also be subject to one month's notice on either side. Applications must be received by me at the Town Hall, Ilford, not later than November 24, 1943. Canvassing, directly or indirectly, will be a disqualification.—Charles N. Roberts, Town Clerk.

COUNTY BOROUGH OF BURTON-UPON-TRENT. TEMPORARY DEPUTY MEDICAL OFFICER OF HEALTH.—Applications are invited from duly qualified practitioners for the appointment of Temporary Deputy Medical Officer of Health, Assistant School Medical Officer and Assistant Tuberculosis Officer at a commencing salary of £600 per annum (plus cost-of-living bonus which at present amounts to £55 per annum), rising, subject to satisfactory service, by annual increments of £25 to £750 per annum, together with a motor car allowance of £50 per annum. The appointment is subject to the passing by the successful applicant of a medical examination, and to termination by one month's written notice on either side. The person appointed must have a Diploma in Public Health, special knowledge of the treatment of Tuberculosis and Infectious Diseases and must have had not less than three years' postgraduate experience. He will be required to devote the whole of his time to the duties of the Office and to act under the direction of the Medical Officer of Health. Applicants should submit with their application full information as to their liability for service, medical fitness and position as regards deferment. Forms of application will not be issued, but full particulars of duties and conditions of appointment will be supplied by me upon application. Applications, endorsed "Temporary Deputy Medical Officer of Health," must be delivered to me, with copies of not more than three recent testimonials, not later than November 26, 1943. Canvassing will disqualify.—H. Bailey Chapman, Town Clerk, Town Hall, Burton-upon-Trent.

CITY AND COUNTY OF THE CITY OF EXETER. City Hospital (Public Assistance).—Applications are invited from male registered medical practitioners for the post of **MEDICAL OFFICER (B1)** (temporary) of the above Institution. Applications from R practitioners cannot be considered unless they have been rejected by the R.A.M.C., and satisfactory evidence of this is submitted. The salary will be at the rate of £600 to £700 per annum, according to experience, together with free quarters, board, and laundry for a single man or an additional £100 per annum for a married man, non-resident. The appointment will be for twelve months in the first instance and thereafter at two calendar months' written notice on either side. Any fees received must be returned to the City Council. Preference will be given to candidates with experience in a similar appointment. The successful candidate will be required to devote the whole of the time to the duties, and he will be on the staff of the Medical Officer of Health. Application forms, together with particulars of the duties may be obtained from the undersigned, to whom it should be returned, together with copies of two recent testimonials, not later than November 24.—C. J. Newman, Town Clerk and Public Assistance Officer, Exeter.

THE QUEEN ELIZABETH HOSPITAL FOR CHILDREN. Hackney Road, E.2. **ORTHOPTIST.**—Applications are invited from registered medical practitioners for the above appointment. Attendance required on one half-day each week to be arranged. An honorarium of one guinea an attendance will be paid. Apply with full particulars of qualifications and experience to the Secretary as above.

ROTHERHAM HOSPITAL. General Voluntary Hospital. (140 beds).—Applications are invited from registered medical practitioners for the appointment of **HOUSE PHYSICIAN (A)**, vacant November 22. Salary £200 per annum (with full residential emoluments). Practitioners within three months of qualification, and liable under the National Service Acts may also apply, when the appointment will be for six months. Applications should be sent at once to the Secretary-Supt.

CORPORATION OF GLASGOW. Public Health Department.—Applications are invited from registered medical practitioners for the appointment of **SENIOR RESIDENT SURGICAL OFFICER (temporary)** at the Southern General Hospital. Salary £400 per annum, plus war increase, at present £17 9s., with board and lodging. Applicants should have held house appointments and have had surgical experience. Preference will be given to candidates holding a higher qualification in surgery. Suitably qualified R or W practitioners holding B2 or B1 appointments are invited to apply, but they should obtain the sanction of the Scottish Central Medical War Committee to their application. Applications, stating age, nationality, qualifications with dates, experience and details of previous appointments, with copies of not more than three recent testimonials, should be sent to the undersigned in envelope marked "Southern General Hospital—Surgical Officer," not later than noon on Saturday, November 27, 1943.—A. S. M. MacGregor, Medical Officer of Health, 23, Montrose Street, Glasgow, C.1.

EAST SUFFOLK COUNTY COUNCIL. Hartismere Emergency Hospital, Eye, Suffolk (Modern Hospital, 160 beds). **NON-RESIDENT MEDICAL OFFICER.**—Applications are invited from registered medical practitioners for the appointment of non-resident Medical Officer (B1 post), now vacant. The appointment will be for the period of the war, but subject to one month's notice at any time to terminate the appointment. R and W practitioners who now hold B2 posts may apply. Applications from R practitioners now holding B1 posts cannot be considered unless they have been rejected by the R.A.M.C. Salary is at the rate of £800 per annum (which includes £50 per annum for services as Medical Officer of the Maternity Ward (10 beds) at the Hospital), plus £100 per annum in lieu of residence. The person appointed will also be appointed as Medical Officer for two small hostels for aged persons—Stayer House and Chandos Lodge, Eye—at a salary at the rate of £50 per annum. Candidates must be able and willing to perform emergency surgery. There is a visiting consulting surgeon who is in general charge of the surgical work. Applications, stating age, nationality, qualifications (with dates), and accompanied by copies of three recent testimonials, should be sent to the undersigned not later than Saturday, November 27, 1943.—Cecil Oakes, Clerk of the County Council, County Hall, Ipswich.

HERTFORDSHIRE COUNTY COUNCIL. **DEPUTY COUNTY MEDICAL OFFICER OF HEALTH.**—Applications for the above post are invited from suitably qualified medical practitioners. Under the Council's Regulations the appointment will be on a temporary basis. Salary £900 per annum, rising by annual increments of £50 to £1,050 per annum. Applicants must have had executive and administrative experience in all branches of a County Health Service. The successful candidate will be required to pass a medical examination. Canvassing strictly prohibited. Forms of application can be obtained from the County Medical Officer, County Hall, Hertford, to whom completed forms, accompanied by copies of two recent testimonials, must be returned not later than December 3, 1943.—Elton Longmore, Clerk of the County Council, County Hall, Hertford.

KENT COUNTY COUNCIL. RESIDENT ASSISTANT MEDICAL OFFICER (B1).—Applications are invited from registered medical practitioners for the temporary appointment of Resident Assistant Medical Officer (B1) at the County Hospital, Orpington, for that part of the Hospital devoted to the care of chronic sick (700 beds). Salary £500 a year, with full residential emoluments valued at £100 a year. Superannuation. Medical examination necessary. Applicants should have held house appointments. Suitably qualified R and W practitioners holding B2 appointments are invited to apply. Applications from R practitioners now holding B1 appointments cannot be considered unless they have been rejected by the R.A.M.C. Applications, stating age, qualifications, experience, nationality, and the names and addresses of two responsible persons to whom reference may be made as to professional ability, should be sent to the Public Assistance Officer, County Hall, Maidstone, not later than December 31, 1943.—W. L. Platts, Clerk of the County Council, County Hall, Maidstone.

VICTORIA HOSPITAL. Blackpool. (Normal complement 200 beds, war-time complement 630 beds.) **HOUSE SURGEON TO SURGICAL UNIT 1 (B2).** **HOUSE SURGEON TO SPECIALS DEPTS. (B2).** (Eye, Ear, Nose, and Throat, and Obstetrical).—Applications are invited from registered medical practitioners, male, for the B2 appointments enumerated above, all to become vacant on January 1, 1944, including R practitioners who now hold A posts. The appointments are for a period of six months and salary in each case is at the rate of £175 per annum, with full residential emoluments. Applications, stating age, qualifications with dates, nationality, and present post, and accompanied by copies of three recent testimonials, should be sent to the undersigned immediately.—Walter R. Smith, General Superintendent.

IMPORTANT—All applicants should read the notice about qualifications required, etc., printed at the top of page 14

CITY OF MANCHESTER. Baguley Sanatorium (421 beds). **TEMPORARY RESIDENT ASSISTANT MEDICAL OFFICER (B1).**—Applications are invited from registered medical men for the above-mentioned appointment, which is vacant now. Candidates should have had experience in the treatment of pulmonary tuberculosis. Suitably qualified R practitioners holding B2 appointments are invited to apply. Applications from R practitioners now holding B1 appointments cannot be considered unless they have been rejected by the R.A.M.C. The appointment will be temporary for the duration of the war. Salary £350 per annum, rising by annual increments of £25 to £450, with board, residence, and laundry valued at £85 in addition, subject to the Manchester Corporation conditions of service. A temporary cost-of-living wages addition to the salary stated. Full information and forms of application may be obtained from the Medical Officer of Health, Hospitals Administration Section, G.P.O. Box 399, Town Hall, Manchester, 2, and applications for the post must be received by him not later than December 2, 1943. Canvassing in any form is prohibited.—R. H. Adcock, Town Clerk, Town Hall, Manchester, 2.

CITY OF BIRMINGHAM. Little Bromwich Infectious Diseases Hospital. **JUNIOR MEDICAL OFFICER (A).**—Applications are invited from registered medical practitioners, male and female, for appointment as Junior Medical Officer (A), including practitioners within three months of qualification who are liable to service under the National Service Acts. If held by a practitioner who is liable under these Acts the appointment will be for a period of six months, otherwise it will be for a period of twelve months. The salary is at the rate of £300 per annum, plus residential emoluments. Applications should be sent to the Medical Officer of Health, Congreve Street, Birmingham, 3, not later than November 24, 1943.

CORPORATION OF GLASGOW.—Public Health Department. **BACTERIOLOGIST.**—Applications are invited for the position of Bacteriologist, which will shortly fall vacant. Salary £1,000 per annum, rising by annual increments of £25 to £1,250 per annum, plus war bonus. The appointment is also subject to the provisions of the Corporation Superannuation Scheme. Applications, stating age, and giving full particulars of qualifications, training and experience, together with copies of not more than three recent testimonials, to be sent to the undersigned, in envelope marked "Bacteriologist," not later than Saturday, November 27, 1943.—William Kerr, Town Clerk, City Chambers, Glasgow, C.2.

CITY AND COUNTY COUNCIL OF NEWCASTLE-UPON-TYNE. Newcastle General Hospital (900 beds). Shoolby Bridge Hospital (900 beds). **HOUSE PHYSICIANS (A), AND HOUSE SURGEONS (A).**—Applications are invited from registered medical practitioners, male and female, for the above appointments, shortly vacant. The appointments will be for a period of six months. Salary at the rate of £150 per annum, with full residential emoluments. Practitioners within three months of qualification and liable under the National Service Acts may apply. Applications to be forwarded to the Medical Officer of Health, Town Hall, Newcastle-upon-Tyne, 1.

CITY OF NOTTINGHAM. City Isolation Hospital. —Applications are invited from registered medical practitioners, male and female, for the appointment of **RESIDENT MEDICAL OFFICER (B2)**, now vacant. The salary will be fixed between £250 and £350, according to experience and suitability of the selected candidate. Full residential emoluments. R and W practitioners who now hold A posts may apply, when appointment will be limited to six months, otherwise renewable for a further six months. Forms of application, obtainable from my office should be returned forthwith to J. E. Richards, Town Clerk, Guildhall, Nottingham.

CITY OF MANCHESTER. Crumpsall Hospital (1,400 beds). **LOCUM TENENS ASSISTANT SURGICAL OFFICER (RESIDENT) (B1).**—Applications are invited from registered medical practitioners for the above-mentioned appointment for a period of 4 to 6 weeks commencing approximately December 1, 1943, at a fee of £10 10s. weekly, plus full residential emoluments. Experience of emergency surgery would be an advantage. Apply to Dr. W. A. Ramsay, Medical Superintendent, Crumpsall Hospital, Manchester 8, at once.

WEST LONDON HOSPITAL. Hammersmith, W.6. **HOUSE SURGEON (A).**—Applications are invited from registered medical practitioners, male and female, for the appointment of a House Surgeon (A), to become vacant on January 1 next, including practitioners within three months of qualification who are liable to service under the National Service Acts. The appointment will be for a period of six months, but may be terminated by one month's notice on either side. Salary at the rate of £100 a year, with the usual residential emoluments. Applications, accompanied by copies of three recent testimonials, and stating age, Medical School, qualifications with dates, nationality, and experience, should be sent to the undersigned not later than December 12.—H. A. Madge, Secretary.

POOLE JOINT SANATORIUM BOARD. Poole Sanatorium (315 beds). **ASSISTANT MEDICAL OFFICER (B1).**—Applications are invited from registered medical practitioners, male or female, for the above appointment. Preference will be given to candidates who have previous experience in the treatment of tuberculosis. Suitably qualified R and W practitioners holding B2 appointments are invited to apply. Applications from R practitioners now holding B1 appointments cannot be considered unless they have been rejected by the R.A.M.C. The salary is £350 per annum, rising by annual increments of £25 to £450 per annum, with full residential emoluments. The Sanatorium is a new one with modern facilities for the diagnosis and treatment of the disease, including major thoracic surgery. The appointment will be subject to the provisions of the Local Government Superannuation Act, 1937, and the successful candidate will be required to pass a medical examination. Applications, stating age, qualifications, and experience, and including the names of two persons to whom reference may be made as to professional ability, should be sent to the Medical Superintendent, Poole Sanatorium, Nunthorpe, Nr. Middlesbrough, so as to reach him not later than Friday, December 3, 1943.—G. S. McIntire, Clerk.

STAFFORDSHIRE COUNTY COUNCIL. **TEMPORARY ASSISTANT MEDICAL OFFICER (Woman).**—Applications are invited from medical women for the above temporary post during the war. Preference will be given to those who have held residential Hospital appointments, and who have the Diploma of Public Health. The candidate appointed will work under the direction of the County Medical Officer and the duties will include School Medical and Maternity and Child Welfare work. The salary will be at the rate of £600 per annum, rising by annual increments of £50 to £800 per annum. The appointment will be subject to three calendar months' notice on either side. Forms of application may be obtained from the undersigned and should be returned by first post on December 2, 1943, together with copies of not more than three testimonials. Applications should include full information as to liability to military service, medical fitness and the position as regards deferment, and candidates in the appropriate age groups who are desirous of seeking the appointment are reminded that, in the first instance, they must obtain the permission of the Ministry of Health through the Principal Regional Medical Officer concerned.—T. H. Evans, Clerk of the County Council, County Buildings, Stafford.

ISOLATION HOSPITAL. Clatterbridge, Wirral. **RESIDENT MEDICAL OFFICER (B1).**—Applications are invited from registered medical practitioners for the appointment of Resident Medical Officer (B1), now vacant. Preference will be given to applicants who have had experience in bacteriology—the hospital being equipped for the examination of swabs, etc. The Hospital is a Training School, and applicants must be prepared to lecture to the nurses. Suitably qualified R and W practitioners holding B2 appointments are invited to apply. Applications from R practitioners now holding B1 appointments cannot be considered unless they have been rejected by the R.A.M.C. The Hospital is situated within easy distance of the Liverpool Medical School, and time will be allowed, as the work of the Hospital permits, for attendance at higher qualification classes. Salary is at the rate of £265 per annum (including war bonus), with full residential emoluments. The appointment is for one year only and is not renewable. Applications should be sent immediately to the Clerk to the Wirral Joint Hospital Board, Isolation Hospital, Clatterbridge, Wirral.

GREENOCK ROYAL INFIRMARY. **SURGICAL SPECIALIST (full time), non-resident.**—Applications are invited for the above appointment from suitably qualified surgeons. Salary £1,000 per annum, with permission to undertake consultant practice in the district, but not to engage in ordinary General Practice.

RESIDENT SURGICAL OFFICER or REGISTRAR (B1).—Applications are invited for the above post. Preference will be given to candidates holding the diploma F.R.C.S. or similar qualification. Salary £300 to £500 per annum, according to qualifications and experience, with full residential emoluments. Applications from R practitioners now holding B1 posts cannot be considered unless they have been rejected by the R.A.M.C. or have obtained the sanction of the Central Medical War Committee. Suitably qualified R and W practitioners who now hold B2 posts may apply. Forms of application may be obtained from the Secretary-Superintendent, Greenock Royal Infirmary, Duncan Street, Greenock.

THE ROYAL INFIRMARY. Sunderland (252 beds in active use).—Applications are invited from registered medical practitioners, male and female, including practitioners within three months of qualification who are liable to service under the National Service Acts, for the following appointments, which will be for a period of six months: **HOUSE SURGEON (A)**, from January 7, 1944; **HOUSE PHYSICIAN (A)**, from January 15, 1944. The salary is at the rate of £150 per annum, with full residential emoluments.—M. J. Huntley, House Gov. and Secretary.

LONDON COUNTY COUNCIL.—Medical practitioners required for the undermentioned positions: **TEMPORARY ASSISTANT MEDICAL OFFICER, Class I (B1)** Salary £350 by £25 to £425 a year, plus a temporary cost-of-living bonus. Grove Park Hospital, Lee, S.E.12, experience in tuberculosis essential. Suitably qualified R and W practitioners holding B2 appointments, also R practitioners holding B1 appointments, and rejected by the R.A.M.C. may apply.

TEMPORARY ASSISTANT MEDICAL OFFICER, Class II (B2). Salary £250 a year, plus a temporary cost-of-living bonus. High Wood Hospital for Children, Brentwood, Essex, experience of children and in tuberculosis desirable; Archway Hospital, Archway Road, Highgate, N.19, General Medical; St. Giles' Hospital, St. Giles' Road, Camberwell, S.E.5, General Medical; St. Leonard's Hospital, Nuttall Street, Kingsland Road, N.1, General Medical; St. Mary Islington Hospital, Highgate Hill, N.19, General Medical; Lewisham Hospital, Lewisham, S.E.13, Casualty Officer; St. Alfege's Hospital, Vanburgh Hill, S.E.10, (2 vacancies), (a) Casualty Officer, (b) Medical Duty with obstetrics. R and W practitioners who now hold A posts may apply, when appointment will be limited to six months. The above positions are with board, lodging, and washing. Married quarters are not available.

TEMPORARY ASSISTANT DISTRICT MEDICAL OFFICER required in areas IX, and X, District L (a part of the borough of Greenwich), provisional. Salary £325 a year. Persons engaged required to carry out the duties prescribed by Public Assistance Order, 1930, and to reside in or near the district. Remuneration and conditions subject to review. The vacancy exists during the absence of the appointed district medical officer on war service.

Medical Practitioners required as **TEMPORARY PART-TIME VISITING MEDICAL OFFICER.** Daily visit (except Sundays) and emergencies at St. Clement's Hospital, 2a, Bow Road, E.3 (two positions). Salary £200 a year. Application form obtainable from the Medical Officer of Health, Staff Division 2, the County Hall, S.E.1 (stamp & addressed foolscap envelope necessary), returnable by December 6, 1943. Canvassing disqualifies.

COUNTY BOROUGH OF WEST HAM. Public Health Department. **PART-TIME CONSULTANT CHEST SURGEON** at West Ham Sanatoria. —Applications are invited from qualified medical men who have specialized in thoracic surgery for the above part-time appointment. The successful candidate will be required to visit Dagenham Sanatorium at certain intervals (approximately once a month) to advise the Medical Superintendent on patients in the West Ham Sanatoria requiring operative measures, and to arrange for such treatment. The fee payable will be ten guineas per visit, including expenses. Normally the attendance of the surgeon will not be longer than a morning session, but if the work at any visit involves attendance during a portion of the afternoon, he will be expected to carry out all the duties at the above fee. Applications should be made, in writing, to Dr. E. Ashworth Underwood, Medical Officer of Health, 88, Romford Road, West Ham, E.15, from whom further particulars of the appointment may be obtained. Applications should be forwarded so as to arrive not later than November 29, 1943.—Charles E. Cranfield, Town Clerk, Town Hall, West Ham, E.15.

CITY OF PLYMOUTH. City General Hospital (320 beds).—Applications are invited from registered medical practitioners for the appointment of **RESIDENT MEDICAL OFFICER (B1)**, to become vacant almost immediately. Applicants should have held house appointments, and must have had previous experience in obstetrics. The person appointed will be required to do a certain amount of emergency surgery, as delegated to him. Suitably qualified R and W practitioners holding B2 appointments are invited to apply. Applications from R practitioners now holding B1 appointments cannot be considered unless they have been rejected by the R.A.M.C. Salary is at the rate of £450 per annum, rising by annual increments of £50 to £550 per annum. All fees received by the Officer must be refunded to the Council. Applications should be sent to the undersigned as soon as possible.—T. Peirson, Medical Officer of Health, Seven Trees, Lipson Road, Plymouth.

NORTH RIDING OF YORKSHIRE COUNTY COUNCIL. **ASSISTANT TUBERCULOSIS MEDICAL OFFICER (TEMPORARY).** —Applications are invited from registered medical practitioners exempt from military service for this appointment, which is whole-time. Salary £600 per annum, rising by two annual increments of £50 to £700 per annum, plus cost-of-living bonus of £25 per annum. Travelling allowance in accordance with the Council's scale. Special knowledge and experience in modern methods of diagnosis and treatment of tuberculosis, including use of mobile x-ray unit, are essential. Applications, accompanied by copies of not more than three recent testimonials, and endorsed "Assistant Tuberculosis Medical Officer," must be received by the undersigned not later than Saturday, December 4, 1943.—Hubert G. Thornley, Clerk of the County Council, County Hall, Northallerton, Yorks.

IMPORTANT—All applicants should read the notice about qualifications required, etc., printed at the top of page 14

THE KING EDWARD VII WELSH NATIONAL MEMORIAL ASSOCIATION.—Applications are invited from registered medical practitioners, male or female, single, for the appointment of **TEMPORARY ASSISTANT RESIDENT MEDICAL OFFICER (B1)** at the Adeline Patti Hospital, Craig-y-nos, Swansea Valley (114 beds for the treatment of pulmonary tuberculosis in men and women, and surgical tuberculosis in children). Applicants should have held house appointments and had institutional experience in the treatment of pulmonary tuberculosis. Suitably qualified R and W practitioners holding B2 appointment are invited to apply. Applications from R practitioners now holding B1 appointments cannot be considered unless they have been rejected by the R.A.M.C. Salary £350 by £25 to £450 per annum, plus full residential emoluments. Applications, stating age, nationality, qualifications and experience, with particulars as to liability for military service, and medical fitness, together with copies of three recent testimonials, should reach the undersigned as soon as possible. —Norman Tattersall, Principal Medical Officer, Memorial Offices, Cathays Park, Cardiff.

THE QUEEN ELIZABETH HOSPITAL FOR CHILDREN, Glamis Road, Shadwell, E.1 **HOUSE PHYSICIAN (B2).**—Applications are invited from registered medical practitioners, male and female, for the above appointment, to become vacant on January 1, 1944, including R and W practitioners now holding A posts. The appointment will be for six months. Salary is at the rate of £200 per annum, with full residential emoluments. Application forms may be obtained from the undersigned and should be returned with copies of not more than three testimonials on or before November 27, 1943. —Charles H. Bessell, General Secretary, Queen Elizabeth Hospital, Hackney Road, E.2.

THE QUEEN ELIZABETH HOSPITAL FOR CHILDREN, Hackney Road, E.2.—**HOUSE PHYSICIAN (A).**—Applications are invited from registered medical practitioners, male and female, for the above appointment, to become vacant on January 1, 1944, including practitioners within three months of qualification who are liable to service under the National Service Acts. Appointment will be for six months. Salary at rate of £150 p.a., with full residential emoluments. Application forms may be obtained from the undersigned, and should be returned with copies of not more than three testimonials, on or before November 27, 1943. —Charles H. Bessell, General Secretary.

THE WARWICKSHIRE KING EDWARD VII MEMORIAL SANATORIUM, Hertford Hill, Near Warwick (225 beds, pulmonary tuberculosis).—Applications are invited from registered medical women, including W practitioners who now hold A posts, for the post of **JUNIOR MEDICAL OFFICER (B2)** at the above Sanatorium. If held by a W practitioner the appointment will be limited to six months; otherwise it will not exceed one year. No previous professional experience necessary. Salary at the rate of £350 p.a., with full residential emoluments. Applications to be sent to the Medical Superintendent at the Sanatorium by November 26, 1943. —L. Edgar Stephens, Clerk to Joint Committee, Warwick.

TILBURY HOSPITAL, Essex. **HOUSE OFFICER (A)** including duties of **CASUALTY OFFICER.**—Applications are invited from registered British practitioners, including practitioners within three months of qualification who are liable to service under the National Service Acts. If held by a practitioner who is liable under these Acts, appointment will be for a period of six months. Salary at the rate of £160 per annum, with full residential emoluments. Applications, stating age, qualifications with dates, and accompanied by copies of three recent testimonials, to be sent immediately to the undersigned marked "Tilbury." —F. A. Lyon, Secretary, Seamen's Hospital Society, Greenwich, S.E.10.

THE LONDON CHEST HOSPITAL Victoria Park, E.2.—The Board of Management desire to appoint for the war period two additional **HONORARY ANAESTHETISTS.** Experience in thoracic work is desirable but not essential. An attendance honorarium is payable. Applications in triplicate should be sent to the undersigned not later than Nov. 30. —Thomas Brown, Secretary.

THE SALVATION ARMY. The Mothers' Hospital, Clapton, E.5.—Applications are invited from medical women for the post of **JUNIOR RESIDENT MEDICAL OFFICER (B2)**, vacant Dec. 1. Salary £110 per annum, with board, residence, and laundry. The appointment is for six months. W practitioners who now hold A posts may also apply. Applications, with testimonials, to be sent to the Secretary-Superintendent.

KINGSWAY HOSPITAL (Borough Mental Hospital), Derby.—**TEMPORARY ASSISTANT MEDICAL OFFICER (B1)** required, male or female. Previous experience in a mental hospital is desirable but not necessary. Suitably qualified R and W practitioners holding B2 appointments, also R practitioners now holding B1 posts, and rejected by the R.A.M.C., may apply. Salary £350-£450 per annum, by four £25 increases, with full residential emoluments, and £50 per annum for D.P.M. Applications to be sent to the Medical Superintendent.

HOSPITAL FOR CONSUMPTION AND DISEASES OF THE CHEST, Brompton.—Applications are invited from registered medical practitioners, male and female, including suitably qualified R and W practitioners who now hold B2 posts, for the appointment of **RESIDENT SURGICAL OFFICER (B1).** Applicants must have held a resident hospital appointment, and R practitioners now holding B1 posts cannot be considered unless they have been rejected by the R.A.M.C. The appointment is for twelve months, commencing on March 1, 1944. Salary at the rate of £150 per annum, with board and residence, and an additional £25 per annum for services in connexion with paying patients.

Applications are also invited for the following appointments from registered medical practitioners, male and female, including R and W practitioners who now hold A posts: **ASSISTANT RESIDENT MEDICAL OFFICER (B2).** Experience in a typical pneumothorax essential, and in ear, nose, and throat work desirable. Salary at the rate of £150 per annum, with board and residence. The appointment is for six months commencing February 1, 1944.

HOUSE PHYSICIANS (B2), for which there are three vacancies. The duties include work in the Out-patient Department as well as in the wards, and the appointment is for six months commencing February 1, 1944, with an honorarium of £50, and board, and residence. Applications, accompanied by copies of one or more recent testimonials, should reach the undersigned not later than Sat., December 4, 1943. —F. G. Rouvray, Secretary, Brompton.

WARNEFORD GENERAL HOSPITAL, Leamington Spa.—Applications are invited from registered medical practitioners, male and female, for the joint appointment of **CASUALTY OFFICER** and **HOUSE SURGEON (B2)** to one of the surgeons and V.D. Officer, including R and W practitioners who now hold A posts. If held by an R or a W practitioner, appointment will be limited to six months. Salary is at the rate of £180 per annum, with full residential emoluments.

Applications are invited from registered medical practitioners, male and female, for the joint appointment of a **HOUSE PHYSICIAN** and **OPHTHALMIC HOUSE SURGEON (A)**, including practitioners within three months of qualification who are liable to service under the National Service Acts. If held by a practitioner liable under these Acts, appointment will be for a period of six months. Salary is at the rate of £150 per annum, with full residential emoluments. Applications, stating age, qualifications with dates, and nationality, and accompanied by copies of three recent testimonials, should be sent to the undersigned. —J. R. Long, House Governor and Secretary.

WEST NORFOLK AND KING'S LYNN GENERAL HOSPITAL, King's Lynn. **HOUSE SURGEON AND CASUALTY OFFICER (A).**—Applications are invited from registered medical practitioners, male and female, for the appointment of a House Surgeon and Casualty Officer (A), now vacant, including practitioners within three months of qualification who are liable to service under the National Service Acts. The appointment will be for a period of six months. Salary is at the rate of £150 per annum, with full residential emoluments. Applications, stating age, nationality, qualifications, and accompanied by three recent testimonials, should reach the undersigned as soon as possible. —Joseph E. Searjeant, F.C.C.S., House Governor and Secretary.

WHITEHAVEN AND WEST CUMBERLAND HOSPITAL (Voluntary General Hospital of 90 beds, plus 50 F.M.S. beds, with Maternity Unit, and Modern Fracture Clinic and Rehabilitation Centre).—Applications are invited from registered medical practitioners for the appointment of **HOUSE SURGEON (A)**, now vacant, including practitioners within three months of qualification who are liable to service under the National Service Acts. Appointment will be for a period of six months at a salary of £200 p.a., with full residential emoluments. Applications should be sent to the undersigned. —W. Read, Secretary-Superintendent.

MANCHESTER HOSPITAL FOR CONSUMPTION AND DISEASES OF THE THROAT AND CHEST.—Applications are invited from registered medical practitioners, male and female, for the appointment of **RESIDENT HOUSE SURGEON (B2)** at the St. Anne's Hospital, Bowdon, Cheshire, now vacant. The Hospital has 50 beds and the work is mainly ear, nose, and throat. Salary £250 per annum, with full residential emoluments. R and W practitioners who now hold A posts may apply, when appointment will be limited to six months. Applications should be sent not later than November 26, 1943, to W. Hunt, Secretary, Manchester Hospital for Consumption, 45, Hardman St., Manchester, 3.

LINCOLN COUNTY HOSPITAL (Voluntary Hospital, 200 beds).—Applications are invited from registered medical practitioners for the appointment of a **HOUSE SURGEON (A)**, vacant Jan. 1, 1944. Salary is at the rate of £175 per annum, with full residential emoluments. Practitioners within three months of qualification and liable under the National Service Acts may also apply, when appointment will be for six months. Applications to Arthur Moore, Secretary-Superintendent.

CITY OF PLYMOUTH, ASSISTANT MEDICAL OFFICER OF HEALTH.—Applications are invited from registered medical practitioners for the above whole-time temporary appointment, probably for the duration of the war. The salary scale is £500, rising by £25 annually to £700 per annum. Previous service on this salary scale, under another local authority, will be reckoned in calculating the appropriate salary of the Officer appointed. All fees received by the Officer must be refunded to the Council. The duties will be chiefly in the school medical and ante-natal and infant welfare clinics, but may include other duties allocated from time to time by the Medical Officer of Health. The appointment is subject to the provisions of the Local Government Superannuation Act, 1937, and terminable by three months' notice on either side, and the successful candidate will be required to pass a medical examination. Applications should be sent to the undersigned as soon as possible. —T. Peirson, Medical Officer of Health, Seven Trees, Lipson Road, Plymouth.

CITY OF YORK EDUCATION COMMITTEE. Child Guidance Clinic.—Applications are invited for the post of **FULL-TIME EDUCATIONAL PSYCHOLOGIST**, to commence March 1, 1944. Remuneration £350 per annum. Canvassing, directly or indirectly, will disqualify candidates. The appointment will be subject to the City Council's Sick Allowance Regulations. Applications, stating qualifications, age, experience, etc., accompanied by copies of not more than three recent testimonials, should reach the undersigned not later than December 4, 1943. —G. H. Gray, Secretary for Education, Education Offices, York.

ESSEX COUNTY COUNCIL, HOUSE OFFICER (B2) at St. Andrew's Hospital, Billericay.—Applications are invited from registered medical practitioners, male and female, including R and W practitioners who now hold A posts, for the appointment of a House Officer (B2) at the above Hospital. The salary is at the rate of £200 p.a., with full residential emoluments. If held by an R or W practitioner the appointment will be limited to six months, otherwise it will not exceed one year. Applications should be made in writing to the County Medical Officer, County Hall, Chelmsford, and should include applicant's full name, age, nationality, qualifications, and details of previous posts (if any), and whether liable to service under the National Service Acts.

KENT AND SUSSEX HOSPITAL, Tunbridge Wells (506 beds).—Applications are invited from registered medical practitioners, male and female, including R and W practitioners who now hold A posts, for the appointment of **RESIDENT HOUSE PHYSICIAN (B2)**, to become vacant on Dec. 29, 1943. If held by an R or W practitioner the appointment will be limited to six months, otherwise it will be for a period of six to twelve months. Salary at the rate of £200 per annum, with full residential emoluments. —E. A. Wagstaff, Supt.-Sec.

SWANSEA GENERAL AND EYE HOSPITAL.—Applications are invited from registered medical practitioners, male and female, for the appointment of a **HOUSE PHYSICIAN (A)**, to become vacant on December 8, including practitioners within three months of qualification who are liable to service under the National Service Acts. If held by a practitioner who is liable under these Acts, appointment will be for a period of six months. Salary is at the rate of £150 per annum, with full residential emoluments. Applications should be forwarded to the undersigned. —O. C. Howells, Secretary-Supt.

SIR JOHN PRIESTMAN, DURHAM COUNTY, AND SUNDERLAND EYE INFIRMARY.—Applications are invited for **RESIDENT HOUSE SURGEON (B2)**, male or female, including R and W practitioners who now hold A posts. The Infirmary is recognized by the Royal College of Surgeons as partial course of D.O.M.S. (60 beds). Salary commencing at £200 per annum, with board, residence, and laundry, rising to £250 per annum after the period of one year. If held by an R or W practitioner appointment will be limited to six months. Applications, together with copies of two recent testimonials, to be delivered to the Secretary, the Sir John Priestman, Durham County and Sunderland Eye Infirmary, Alexandra Road, Sunderland.

GRIMSBY AND DISTRICT GENERAL HOSPITAL (237 beds).—Applications are invited from registered medical practitioners, male and female, for the appointment of **RESIDENT CASUALTY OFFICER** and **HOUSE SURGEON (A)**, vacant December 1, 1943. Appointment is for six months. Salary at the rate of £175 per annum, with full residential emoluments. Practitioners within three months of qualification and liable under the National Service Acts may apply. Applications, stating age, qualifications, nationality, and copies of three recent testimonials, to the Superintendent.

THE WOMEN'S HOSPITAL, Liverpool.—Applications, male or female, are invited for the post of **HOUSE SURGEON (A)**, including practitioners within three months of qualification who are liable to service under the National Service Acts, at £100 per annum, for six months from January 1, 1944. Testimonials to reach the Secretary of the Medical Board not later than December 10, 1943.

IMPORTANT—All applicants should read the notice about qualifications required, etc., printed at the top of page 14

BATTERSEA GENERAL HOSPITAL, London, S.W.11.—The Board of Management invite applications from duly qualified practitioners, male or female, for the appointment of **PHYSICIAN** on the Honorary Medical Staff of the Hospital. The appointment is of a temporary nature and may be terminated, after due notice, either before or at the end of the war. The practitioner appointed will be expected to take charge of a weekly out-patient clinic and to attend at the Hospital in regard to in-patients on such other occasions as circumstances require. Applications should be sent to the Secretary of the Hospital as soon as possible.

BATTERSEA GENERAL HOSPITAL, London, S.W.11.—The Board of Management invite applications from duly qualified practitioners for the appointment of **ANAESTHETIST** on the honorary medical staff of the Hospital. The appointment, in the first instance, will be for the duration of the war. It is probable that the practitioner appointed will be enrolled in the Emergency Medical Service in connexion with the treatment of air raid casualties and receive remuneration on a sessional basis. Applications, stating age, nationality, qualifications and experience, should be sent to the Secretary of the Hospital as soon as possible.

CHELSEA HOSPITAL FOR WOMEN, S.W.3.—Applications are invited from registered medical practitioners, male or female, for the post of **HOUSE SURGEON (B2)**, from January 1, 1944, open to R and W practitioners who now hold A posts, when the appointment will be limited to six months. Salary is at the rate of £200 per annum, together with board, residence, and laundry. Applications should be forwarded to the undersigned not later than Friday, November 26.—George W. Cooling, Secretary.

EAST SUFFOLK AND IPSWICH HOSPITAL, Ipswich (400 beds, 7 residents).—Applications are invited from registered medical practitioners, including those within three months of qualification who are liable to service under the National Service Acts for the appointment of **HOUSE SURGEON TO THE GYNAECOLOGICAL AND OBSTETRICAL DEPARTMENT (A)**, vacant December 9. Appointment will be for a period of six months. The salary is at the rate of £175 per annum, with full residential emoluments.—Arthur Griffiths, Secretary, the Hospital, Ipswich.

EAST SUFFOLK AND IPSWICH HOSPITAL, Ipswich (400 beds, 7 residents).—Applications are invited from registered medical practitioners for the post of **RESIDENT MEDICAL OFFICER (B1)**, male, now vacant. Applicants should have held house appointments and preference will be given to candidates holding Diploma of F.R.C.S. R practitioners holding B2 posts are invited to apply. Applications from R practitioners now holding B1 appointments cannot be considered unless they have been rejected by the R.A.M.C. Salary for a single man at the rate of £400 per annum, with full residential emoluments, and for a married man at the rate of £500 per annum, with house free of rates and allowance for lighting and heating, but without board. Applications to be sent to Arthur Griffiths, Secretary, the Hospital, Ipswich.

GUY'S HOSPITAL MEDICAL SCHOOL, MEDICAL REGISTRAR (ACTING).—Applications are invited for the post of Medical Tutor and Acting Medical Registrar, to commence duties on Jan. 1, 1944. The post carries an honorarium for teaching of £50 per annum, and is held in conjunction with an E.M.S. (B1) appointment at a salary of £350 per annum or £550 per annum, dependent upon experience, in either case with board and lodging, or £100 per annum in lieu thereof. Applications from R practitioners now holding B1 posts cannot be considered unless they have been rejected by the R.A.M.C. The successful candidate must be prepared to take up duties at Guy's Hospital or at one of the E.M.S. Hospitals in Sector 10. Applications should be lodged with the Dean, Guy's Hospital Medical School, London Bridge, S.E.1, on or before November 27, 1943.

PRINCESS LOUISE KENSINGTON HOSPITAL FOR CHILDREN, W.10.—Applications are invited from registered medical practitioners, male and female, including R and W practitioners who now hold A posts, for the appointment of **RESIDENT MEDICAL OFFICER (B2)**, vacant immediately. If held by an R or a W practitioner the appointment will be limited to six months. The salary is at the rate of £200 per annum, with full residential emoluments. Applications should be sent to the Secretary.

GENERAL HOSPITAL, Nottingham. Ear, Nose and Throat Department (40 beds) and large Out-patient Department.—Applications are invited from registered medical practitioners, male and female, for the appointment of a **HOUSE SURGEON (A)**, for the above Department, including practitioners within three months of qualification who are liable to service under the National Service Acts. If held by a practitioner who is liable under these Acts, appointment will be for a period of six months. Salary at the rate of £200 per annum, with full residential emoluments. Applications to be addressed to the undersigned, stating age, qualification, experience, etc., together with copies of testimonials.—Henry M. Stanley, House Governor and Secretary.

HOSPITAL OF ST. CROSS, Rugby (170 beds, 3 residents).—Applications are invited from registered medical practitioners, male or female, for appointment of **RESIDENT MEDICAL OFFICER (A)**, vacant immediately, including practitioners within three months of qualification and liable to service under the National Service Acts. If held by a practitioner liable under these Acts, appointment will be for six months. Salary at the rate of £150 per annum, with full residential emoluments. Appointment gives opportunity of general experience in all subjects, and the successful applicant will be attached to the medical wards as House Physician. Applications, stating age, nationality, qualifications with testimonials, to be sent immediately to Harvey Race, Superintendent.

HARTLEPOOLS HOSPITAL (113 beds, including maternity unit) invite applications for the posts of **HOUSE SURGEON (B2)**, salary £200 p.a. R and W practitioners who now hold A posts may apply, when appointment will be limited to six months. **HOUSE SURGEON (A)**, salary £150 p.a. Practitioners within three months of qualification who are liable to service under the National Service Acts may apply, when appointment will be for a period of six months. Applications, together with copies of two recent testimonials, should be forwarded to Geo. T. Holt, Secretary-Superintendent, Hartlepool Hospital, Hartlepool, Co. Durham.

KENT AND CANTERBURY HOSPITAL, Canterbury (336 beds). **RESIDENT SURGICAL OFFICER (B1).**—Applications are invited from registered male medical practitioners for the appointment of Resident Surgical Officer (B1), to become vacant on January 1, 1944. Applicants should have held house appointments and had surgical experience, particularly in traumatic and orthopaedic surgery. Suitably qualified R practitioners holding B2 appointments are invited to apply. Applications from R practitioners now holding B1 appointments cannot be considered unless they have been rejected by the R.A.M.C. Salary is at the rate of £320 per annum, with board, residence, and laundry. Applications, stating age, qualifications with dates, experience and details of previous appointments and accompanied by copies of three recent testimonials, should be sent to the undersigned immediately.—J. F. Kent, Supt. and Sec.

MANCHESTER ROYAL INFIRMARY, MEDICAL CHIEF ASSISTANT (B1) (Non-resident) (Full-time).—Applications are invited from registered medical practitioners for the appointment of a full-time Medical Chief Assistant (B1) (non-resident), shortly to become vacant. Applicants must have held house appointments and had medical experience. Preference will be given to candidates holding higher qualifications. Suitably qualified R practitioners holding B2 posts are invited to apply. Applications from R practitioners now holding B1 posts cannot be considered unless they have been rejected by the R.A.M.C. Salary is at the rate of £450 per annum. Applications, stating age, nationality, qualifications with dates, experience and details of previous appointments and accompanied by copies of three recent testimonials, should be forwarded to the undersigned.—By Order, F. J. Cable, General Superintendent.

NOTTINGHAM GENERAL HOSPITAL (585 beds).—Applications are invited from registered medical practitioners, male and female, for the appointment of a **HOUSE PHYSICIAN (A)**, including practitioners within three months of qualification who are liable to service under the National Service Acts. If held by a practitioner who is liable under these Acts, appointment will be for a period of six months. Duties to commence immediately. Salary at the rate of £200 per annum, with full residential emoluments. Applications to be addressed to the undersigned.—Henry M. Stanley, House Governor and Secretary.

NORTH STAFFORDSHIRE ROYAL INFIRMARY, Stoke-on-Trent.—The Committee invite applications for the temporary war-time appointment of **ASSISTANT SURGEON** to the Ear, Nose, and Throat Department. Applicants should have had considerable recent experience in Oto-rhinolaryngology, and should hold the Fellowship of one of the Royal Colleges or a Mastership in Surgery. Salary will be at the rate of £700 per annum, non-resident, and the successful applicant will be required to devote his whole time to the work of the Department. Applications, giving full particulars, should be forwarded immediately to the House Governor, from whom further particulars may be obtained.

NORTH STAFFORDSHIRE ROYAL INFIRMARY, Stoke-on-Trent (472 beds).—Applications are invited from registered medical practitioners, male and female, including R and W practitioners who now hold A posts, for the appointment of **HOUSE SURGEON TO EAR, NOSE AND THROAT AND EYE DEPARTMENTS (B2)**. Salary is at the rate of £185 per annum, with full residential emoluments. If held by an R or a W practitioner, appointment will be limited to six months. Applications to be sent as soon as possible to the House Governor.

PRESTON AND COUNTY OF LANCASTER ROYAL INFIRMARY, Maternity Hospital.—Applications are invited from registered medical practitioners, male and female, for the appointment of **RESIDENT OBSTETRICIAN (B2)**. The salary is at the rate of £200 per annum, but a higher salary will be offered to a practitioner holding the D.R.C.O.G. R and W practitioners who now hold A posts may apply, when appointment will be limited to six months. Applications, stating age and qualifications with dates, accompanied by copies of three recent testimonials, to be sent to John Gibson, Superintendent, Royal Infirmary, Preston.

ROYAL BUCKINGHAMSHIRE HOSPITAL, Aylesbury (150 beds).—The following vacancies will arise on or about January 1, 1944: (1) **SENIOR HOUSE SURGEON (B2)**. Applications are invited from registered medical practitioners, male and female, including R and W practitioners who now hold A posts. If held by an R or W practitioner the appointment will be limited to six months. The salary is at the rate of £180 per annum, with full residential emoluments. Opportunities afforded to work with London consultants. (2 and 3) **JUNIOR HOUSE SURGEON (A) and HOUSE PHYSICIAN (A)**. Applications are invited from registered medical practitioners, male and female, including practitioners within three months of qualification who are liable to service under the National Service Acts. If held by a practitioner who is liable under these Acts, the appointment would be for a period of six months. Salary for both posts is at the rate of £120 per annum, with full residential emoluments. Opportunities afforded to work with London consultants, and to undertake duties, according to the post held, in all branches of medical and surgical practice, including anaesthesia. Applications, stating age, qualifications and nationality, together with copies of two recent testimonials, to be sent to the undersigned not later than November 24, 1943.—F. G. Dawes, Secretary-Superintendent.

THE ELIZABETH GARRETT ANDERSON HOSPITAL, Euston Road, N.W.1. **OBSTETRIC ASSISTANT (B2).**—Applications are invited from registered medical women practitioners including W practitioners who now hold A posts, for the appointment of Obstetric Assistant (B2), to become vacant on January 1, 1944. Appointment for six months. Salary £200 per annum, with full residential emoluments. Applications, with copies of three testimonials, to be sent to the Secretary by Monday, November 29, 1943.

THE HOSPITAL FOR SICK CHILDREN, Great Ormond Street, London, W.C.1.—Two vacancies for **HOUSE PHYSICIANS (B2)** will occur on January 1, 1944. Salary £200 per annum, with full residential emoluments. One post is tenable at the Children's Unit at the Sector Hospital, Hemel Hempstead, and the other at the above address. Both appointments are for six months. R and W practitioners now holding A posts and practitioners of either sex ineligible for military service or rejected by the R.A.M.C. may apply. Further particulars and form of application, which must be returned immediately, are obtainable from the undersigned.—H. F. Rutherford, Secretary.

(Continued on p. 19)

Founded 1892

THE LONDON AND COUNTIES

Assets exceed £80,000

MEDICAL PROTECTION SOCIETY

Members receive advice and assistance in all matters affecting the practice of their profession and are afforded COMPLETE INDEMNITY against costs and damages in cases undertaken on their behalf.

Subscription £1.

No entrance fee to those joining within 12 months of registration.

Entrance fee, 10/-

Full Particulars from the Secretary, VICTORY HOUSE, LEICESTER SQUARE, W.C.2.

Gerrard 4553 and 4814

CHARGES FOR CLASSIFIED ADVERTISEMENTS

Circulation 48,000.

To economize in paper and to avoid expense in booking, postage and collection, all advertisements must be paid for at time of order. Publication will be in the earliest possible issue. Delays are unavoidable in present circumstances.

To members of the Association, the charge for advertisements of Assistants, Locums, Partnerships and Practices is 7/6 for 20 words plus 2/6 if a box number is used. Extra words 2/6 for 5 (or less). Adverts should be clearly marked "Member."

Personal, Public Appointments, and Notices.—Minimum charge 16/- which covers up to 20 words. Additional words 4/- for 5 or less.

Educational, Hospitals and Homes.—2/6 a line. Minimum charge 15/-.

Assistants, Locums, Medical Posts, Partnerships, Practices, Dispensers, Typing, Duplicating, Houses, Consulting Rooms, Miscellaneous, minimum charge 10/- which covers up to 20 words. Additional words 2/6 every 5 or less. If a Box Number is used (instead of name and address), 2/6 extra per insertion.

† Name and address of owner and of the firm negotiating the sale must accompany advertisement. These details are not for publication.

Births, Marriages, and Deaths.—The charge for announcements under this head is 10/6. This amount should be forwarded with the notice, authenticated by name and address of sender.

Box No. replies should be addressed separately to each No. care of this Office. They are forwarded to the advertiser under plain cover. In no circumstances can the name and address of Box No. Advertiser be divulged.

Every effort is made to ensure the accuracy of advertisements appearing in the Journal. No recommendation is implied by acceptance, and the British Medical Association reserves the right to refuse or interrupt the insertion of any advertisement.

Advertisement Manager, British Medical Journal, 5 M.A. House, Tavistock Square, London, W.C.1.

Telephone: Euston 2111.

NOTICES

APPLICANTS ARE ADVISED not to send original testimonials when replying to advertisements, copies will answer the purpose quite as well, and in the event of their being lost or mislaid no inconvenience will ensue.

PERSONAL

"MEDICINE IN A CHANGING WORLD." By Dr. J. Ockman. A concise theory of preventive medicine, with special reference to the cancer problem. Price 3s. 10d., post free.—Box 3483, B.M.J.

"THE WOOF OF LIFE." By Dr. I. Harris, Hon. Director, Institute of Research for the Prevention of Disease; Honorary Physician, Liverpool Heart Hospital. The upper and middle classes are in dire peril of extinction. The book deals with religion, economic and medical reconstruction, sex, population, the broad scandal—all from a scientific angle. Price 7s. 6d. net. (Longmans, Green and Co. Ltd.) From all booksellers.

PUBLIC APPOINTMENTS

EXAMINING SURGEON: Factories Act, 1937. The following appointment as Examining Surgeon under the Factories Act, 1937, is vacant: Sedburgh in the County of York. (West Riding). Applications, which should be received not later than November 30, 1943, should be sent to the Chief Inspector of Factories, St. James's Square, London, S.W.1.

INDUSTRIAL MEDICAL OFFICER urgently required, large works at Coventry, full-time appointment, salary £800 to £850 per annum.—Box 3420, B.M.J.

EDUCATIONAL

ROYAL COLLEGE OF SURGEONS OF ENGLAND.

LICENCE IN DENTAL SURGERY.

Notice is hereby given that the following Examinations will commence on the dates stated below:

FIRST PROFESSIONAL EXAMINATION,

Monday, December 13.

SECOND PROFESSIONAL EXAMINATION,

Tuesday, December 14.

Candidates who have fulfilled the necessary conditions, and who desire to present themselves for examination, must give notice in writing to the Director of Examinations, Examination Hall, 8-11, Queen Square, London, W.C.1, at least twenty-one days before the Examination, transmitting at the same time such certificates as may be required by the regulations, together with the full amount of the fee for the Part or Parts of the Examination for which they desire to enter.—Horace H. Rew, Director of Examinations.

A REFRESHER COURSE IN TUBERCULOSIS for GENERAL PRACTITIONERS will be held on Thursday afternoon, December 16, and all day Sunday, December 19, at the Medical Society of London, 11, Chandos Street, W.1. The course has been arranged by the Joint Tuberculosis Council and National Association for the prevention of Tuberculosis JOINT COMMITTEE ON EDUCATION, in collaboration with the Local Medical and Panel Committee for the County of London and the London Public Medical Service. The fee for the Course is £1 11s. 6d. An applicant who is a member of London Public Medical Service may have the fee remitted by that body and deducted from his account. Early application should be made to Dr. Harley Williams, Tavistock House North, W.C.1. Lecturers and subjects are as follows:

Joseph Smart, M.D., M.R.C.P., Physician, London Chest Hospital, "Modern Methods of Diagnosis."

James Maxwell, M.D., F.R.C.P., Physician Royal Chest Hospital and Assistant Physician, St. Bartholomew's Hospital, "Some Points in Home Management."

T. Holmes Sellers, D.M., F.R.C.S., Surgeon, London Chest Hospital, "Collapse Therapy." P. Kerley, M.D., M.R.C.P., D.M.R.E., Radiologist, Westminster Hospital, "Diagnosis by X Rays."

C. H. C. Toussaint, M.R.C.S., D.P.H., Tuberculosis Officer, Bermondsey, "Facilities offered by Local Authorities for the Prevention, Diagnosis, and Treatment of Tuberculosis."

W. P. H. Sheldon, M.D., F.R.C.P., Physician, Great Ormond Street Hospital, "Tuberculosis in Children."

Andrew Morland, M.D., F.R.C.P., Assistant Physician, University College Hospital, "The Peculiarities of Tuberculosis."

These lectures should refresh, stimulate and educate. The speakers all have expert knowledge of their subjects, and have been specially asked to relate their remarks to the daily work of the General Practitioner.

F.R.C.S.(Edin.), Postal and Oral Courses continued as usual. Full details.—H. C. Orrin, F.R.C.S., Surgeon's Hall, Edinburgh.

L.M.S.S.A. FINAL EXAMINATIONS. Surgery, Dec. 6, 1943, Jan. 10, Feb. 14, 1944; Medicine, Pathology, Dec. 13, 1943, Jan. 17, Feb. 21, 1944; Midwifery, Dec. 14, 1943, Jan. 18, Feb. 22, 1944; Master of Midwifery Examinations May and Nov.—For particulars apply Registrar, Apothecaries Hall, Blackfriars Lane, London, E.C.4.

LONDON COUNTY COUNCIL, MAUDSLEY HOSPITAL MEDICAL SCHOOL. (University of London.)

PSYCHOLOGICAL MEDICINE.

The CUSTOMARY COURSE OF LECTURES and PRACTICAL INSTRUCTION for the DIPLOMA IN PSYCHOLOGICAL MEDICINE will begin in JANUARY, 1944, if a sufficient number of applicants enrol. The lectures, which are on the Anatomy and Physiology of the Nervous System, and on Psychology and all aspects of Psychiatry and Mental Deficiency, will be held in short monthly courses on three afternoons a week at the Maudsley Hospital, Denmark Hill, S.E.5. Clinical instruction in Psychiatry and Neurology to comply with the regulations of the Examining Bodies will be arranged if required. Inquiries should be addressed to Dr. W. W. Kay, Acting Honorary Director of the Maudsley Hospital Medical School, the Central Pathological Laboratory, at West Park Hospital, Epsom, Surrey. Telephone No.: Epsom 1408. The last day for enrolment is November 30, 1943.

POSTAL COACHING for all Medical Examinations. Some successes from 1901-42: M.D.(Lond.), 435; M.B. B.S.(Lond.), final, 380; F.R.C.S.(Eng.), primary, 318; F.R.C.S.(Eng.), final, 254; M.R.C.P.(Lond.), 352; M.R.C.S., L.R.C.P., final, 782; D.A. (1936-42), 50; F.R.C.S.(Edin.), and D.R.C.O.G., many successes. Assistance with M.D. thesis. Special arrangements for medical officers with Forces. Medical Prospectus (36 pp.) gratis, along with list of Tutors, etc., on application to the Principal.—University Examination Postal Institution, 17, Red Lion Square, London, W.C.1. Phone: Holborn 6313.

MEDICAL CORRESPONDENCE COLLEGE. 19, Welbeck Street, London, W.1, provides Coaching for all Medical Examinations, D.A., D.P.M., D.O.M.S., D.L.O., D.C.H., M.R.C.P., F.R.C.S., M.D. thesis, and all qualifying exams, by a staff of highly qualified Tutors, Honoursmen, and Gold Medalists. No interruption of Courses during the war. Complete Guide to Medical Examinations sent free on application. Applicants should state in which qualification they are interested.

THE BEDFORD PHYSICAL TRAINING COLLEGE. 37, Lansdowne Road, Bedford. Principal, Miss Stansfeld, O.B.E. Vice Principal, Miss Pettit. Students are trained to become teachers in Gymnastics and Games, and the training, which extends over three years, includes Educational and Medical Gymnastics, Massage, Games, Dancing, and Swimming. Fees: £165 per annum. Two scholarships of £50 and two of £25 are offered annually.—For particulars apply Secretary.

NORTH-EAST LONDON POSTGRADUATE COLLEGE. Prince of Wales's General Hospital, N.15.—Particulars from J. Browning Alexander, M.D., F.R.C.P., Dean.

THE MIDDLESEX HOSPITAL MEDICAL SCHOOL

PRIMARY F.R.C.S. (New Regulations).

A SPECIAL COURSE OF INSTRUCTION for the April Examination will begin on January 3, 1944. Candidates must take all parts of the course and names must reach the Medical School Secretary not later than December 7, 1943.

Fee 25 guineas.

Further particulars can be obtained from the Secretary, Middlesex Hospital Medical School, W.1.

ASSISTANTSHIPS

WANTED, JANUARY 1, LIGHT ASSISTANTSHIP or Morning or Evening Surgeries, by M.B., Ch.B., 35, ineligible, married, thorough experience G.P., excellent references, must be London area, own car if necessary.—Box 3111, B.M.J.

WANTED IMMEDIATELY, full- or part-time outdoor British WOMAN ASSISTANT, general practice, no midwifery, salary by arrangement, car or car expenses, Essex, seven miles London.—Box 3477, B.M.J.

WANTED IMMEDIATELY, Indoor and Outdoor ASSISTANTS, also Duration Locums for town and country practices, with and without view to partnership. Good salaries offered.—State full particulars, British Medical Bureau, 33, Cross Street, Manchester, 2.

WANTED URGENTLY, Indian doctor for Birmingham ASSISTANTSHIP, outdoor, salary £650, furnished rooms available, own car.—Box 3424, B.M.J.

WANTED, INDOOR ASSISTANT for panel and private practice, country town, Yorkshire, dispenser kept, salary £500 p.a., car provided.—Box 3402, B.M.J.

WANTED, OUTDOOR ASSISTANT, for panel and private practice, south coast, car provided, salary £700 per annum.—Box 3409, B.M.J.

WANTED, OUTDOOR ASSISTANT, British, experienced, either sex, abstainer, Newcastle-upon-Tyne, salary £900 inclusive if own car. £800 and car, dispenser kept.—Box 3406, B.M.J.

WANTED, ASSISTANT for duration for mixed panel and private practice, South Coast town, salary £500 per annum, all found, plus car allowance.—Box 3282, B.M.J.

WANTED, PART-TIME ASSISTANTSHIP (indoor or outdoor) in London, by recently qualified M.B. (Belfast), commencing January 1, 1944, for six months, studying at nights, which must be free, able to drive, arrangements by interview.—Box 3418, B.M.J.

WANTED, ASSISTANT, lady or gentleman, in small practice with public health and M.C.V. appointments, references required, £500 p.a., indoor.—Box 3283, B.M.J.

WANTED, ASSISTANT for panel and good-class country practice, Glos., Irish would suit, 10 guineas weekly, all found, and car.—Box 3429, B.M.J.

WANTED, ENERGETIC ASSISTANT, either sex, indoor or outdoor, West Middlesex district, salary £500-£750, by arrangement.—Box 3404, B.M.J.

WANTED BY EXPERIENCED and well-qualified British doctor, ineligible, engaged in postgraduate work, own car, PART-TIME ASSISTANTSHIP to psychiatrist or physician in good-class practice in London.—Box 3475, B.M.J.

WANTED ASSISTANTSHIP OR LOCUM near London by experienced G.P.—Box 3472, B.M.J.

ASSISTANT WANTED, indoor or outdoor, for good-class practice, North London, house and car provided if required, salary by arrangement.—Box 3129, B.M.J.

ASSISTANT WITH CAR WANTED in Somerset Country town, three partners, dispenser kept, salary £700 p.a., live out.—Box 3280, B.M.J.

ASSISTANT REQUIRED, with or without view to partnership, in pleasant rural practice, modern surgeries, dispenser kept, car available, salary by arrangement.—Drs. Kenchington and Myatt, Kingswinford, Nr. Brierley Hill, Staffs.

ASSISTANT WANTED IMMEDIATELY, male or female, unmarried, for country town 50 miles from London, live in, car available, English or Scotch graduate preferred, salary by arrangement.—Box 3405, B.M.J.

ASSISTANT WANTED for pleasant town and country practice, man or woman, outdoor, car provided, terms generous, according to experience.—Dr. Ritchie, Perth. (Tel. 1201.)

ASSISTANT WANTED IMMEDIATELY, replace partner active service, salary £600 per annum, all found.—Dr. Roberts, Troedybryn, Barry.

ASSISTANT WANTED for busy practice, West Midlands, £650, indoor, car can be provided, immediate vacancy, male or female.—Box 3270, B.M.J.

ASSISTANT, male or female, required for five months in a most pleasant town, work extremely light, terms by arrangement.—Box 3254, B.M.J.

ASSISTANT, male, married or unmarried, required for panel and private practice, N.E. London, middle December, with or without view, car available, state full particulars.—Box 3481, B.M.J.

ASSISTANT REQUIRED, male or female, British, for Yorkshire market town, ex. forces preferred, accommodation provided, salary by arrangement, with or without view.—Box 3478, B.M.J.

ASSISTANT, age about 30, wanted immediately with view to partnership, mixed practice, country town, North Gloucestershire.—Box 3401, B.M.J.

ASSISTANTSHIP WANTED, experience 14 months, exempt, tectotaller, good references, married, furnished flat essential, Egyptian.—Hamid, 107, Bucknall New Road, Hanley.

ASSISTANTSHIP OR LOCUM wanted by young Indian doctor, good G.P. experience, some hospital experience, own car, ineligible.—3425, B.M.J.

ASSISTANTSHIP WITH OR WITHOUT a view to partnership in a pleasant London suburb, modern house available at completion of assistantship, car available, salary £550 indoors.—Box 3272, B.M.J.

INDIAN DOCTOR seeks ASSISTANTSHIP, south or west London or Home Counties preferred, long practice experience, drives, part-time considered, state terms.—Box 3422, B.M.J.

LONDON EAST, ASSISTANT WANTED to take charge of mixed practice for the duration (Jewish), salary by arrangement, good living accommodation.—Box 3426, B.M.J.

SCOTLAND, ASSISTANTSHIP OR LOCUM wanted by woman doctor, experienced hospitals and G.P., keen midwifery, driver.—Box 3480, B.M.J.

SCOTTISH M.B., MARRIED, 28, experienced G.P., exempt, desires ASSISTANTSHIP with prospects, Sussex, Surrey, or S.E. London.—Box 3408, B.M.J.

LOCUMS

WANTED IMMEDIATELY, DURATION LOCUM, male or female, good-class practice with panel, takings roughly £1,500-£1,600, terms half-earnings, all practice, expenses and car paid by principal, furnished apartments, S.W. coast town, applicants must be British and able to drive, own car preferable.—Box 3414, B.M.J.

WANTED, DURATION LOCUM, indoors £14 14s. per week, outdoors (board and lodging) £16 16s., car and man to drive, no midwifery, practically no night work.—Box 3434, B.M.J.

WANTED, male or female DURATION LOCUM or LONG-TERM ASSISTANT, December 1, mixed general practice, small hospital, terms by arrangement, furnished flat or rooms available.—Drs. Greenwood, Brown, and Anning, Ripon, Yorks.

WANTED, PART-TIME WORK as LOCUM or ASSISTANT in Central London area by experienced postgraduate, mostly indoor work required.—Box 3403, B.M.J.

DURATION LOCUM REQUIRED, panel and private practice £500 per annum, all found, and car.—Apply Drs. Cox and Irwin, Winchcombe.

DURATION LOCUM for small easily run practice, Somerset, children welcomed.—Box 3473, B.M.J.

EXPERIENCED, WELL-QUALIFIED woman doctor, thirty-one, driver, would do LOCUM anywhere for ten days from December 9, twenty guineas all found.—Box 3410, B.M.J.

EXPERIENCED PRACTITIONER, accustomed sole charge, free now for short or long LOCUMS, own car, hospitality for wife, state terms.—Box 3474, B.M.J.

FREE NOW for few months for LOCUM WORK.—Doctor, 91 St. Annes Road, East Lytham, St. Annes, Lancs. Tel. 2416.

LOCUM WANTED, 2 or 3 weeks in December, January, or February, Harrogate, ten guineas weekly, all found.—Box 3433, B.M.J.

LOCUM WANTED NOW, easy country practice, Cheshire, 2-3 weeks, drive, car provided, no midwifery, hospitality for wife if desired.—Box 3431, B.M.J.

LOCUM REQUIRED for country practice, free furnished house, partner on service, suit family man, dispenser kept, minimum salary £500 with allowances.—Dr. Kerr, Northiam, Rye, Sussex.

LONDON, N.E. DURATION LOCUM required for mixed panel and private practice, no midwifery, terms by arrangement.—Box 3470, B.M.J.

PART-TIME WOMAN LOCUM required for prison work in London for Dec., Jan., and Feb.—Box 3416, B.M.J.

MEDICAL POSTS

CONSULTANT WANTED to act in an advisory capacity to manufacturers of medicinal preparations, correspondence will be treated in strict confidence.—Box 3167, B.M.J.

LINCOLNSHIRE, REQUIRED, DOCTOR in charge, either sex, semi-country, own car essential, salary by arrangement.—Box 3407, B.M.J.

MANCHESTER AREA, friendly alien, M.D., M.R.C.S., free for first-class APPOINTMENTS, ASSISTANTSHIP, LOCUMCY, whole-time or part-time, car driver.—Box 3417, B.M.J.

PARTNERSHIPS

WANTED, PARTNER for practice in North Manchester area, gross income £4,700, 2/5 share available at 1 1/2 years' purchase, house on rent, Protestant preferred.—Box 3259, B.M.J.

WANTED, PARTNER (West Riding), for steadily increasing practice, income over £2,000, half-share available with succession later, preferably indoors to commence, please give details.—Box 2957, B.M.J.

THIRD PARTNER REQUIRED for practice in Liverpool district, 1/4 share, panel over 3,600, receipts last year over £5,000, plenty of scope for keen energetic man, unfurnished house available, premium £2,000.—Box 3421, B.M.J.

PRACTICES

DEATH VACANCY, BELFAST, small panel (600), and large private PRACTICE, mainly obstetrical, house for purchase or rental.—Apply Frank Kerr and Co., Solicitors, 3, Wellington Place, Belfast.

FOR SALE, mixed general PRACTICE in South-West Wales, 1 year's purchase (revenue accounts last 3 yrs. over £3,500 per annum).—Box 3273, B.M.J.

FOR IMMEDIATE SALE, old-established country PRACTICE in Wales, private and panel patients, fishing, shooting, and golf.—Box 3419, B.M.J.

MEDICAL PRACTICE, long-established, in attractive Clyde seaside resort for sale, very substantial income, surgical qualification useful.—For further particulars apply Crawford, Herron and Cameron, Solicitors, 257 West George Street, Glasgow.

OLD-ESTABLISHED, good-class PRACTICE, panel 1,500, receipts £3,500, North London, long introduction or preliminary partnership, premium £4,000.—Box 3130, B.M.J.

PRACTICE OR PARTNERSHIP with view required in West London, Oxford, or Bucks, non-dispensing, hospital if possible, good house and grounds ultimately required.—Box 3428, B.M.J.

PRACTICE, PARTNERSHIP, or ASSISTANTSHIP with view wanted in Newcastle-upon-Tyne by young experienced energetic doctor, capital available.—Box 3413, B.M.J.

PRACTICE WANTED NOW, non-industrial, income about £1,000, with scope for early increase, house must be to rent, replies treated with strict confidence.—Box 3471, B.M.J.

REQUIRED BY EXPERIENCED G.P., small country PRACTICE, South Somerset, Devon, or Cornwall, small house, nice garden, preliminary locum or assistantship.—Box 3423, B.M.J.

SOUND MEDICAL PRACTICE FOR SALE, county town near Glasgow, mixed artisan and middle-class, panel 2,400, income approx. £2,000, attractive house and garden, excellent scope.—Box 3415, B.M.J.

SMALL OR MEDIUM-SIZED PRACTICE in Southern Counties wanted, payable by instalments out of income.—Box 3625, B.M.J.

DISPENSING, TYPING, SECRETARIAL RECEPTION, &c.

None of the vacancies for women advertised in these columns relates to a woman between 18 and 41 unless such a woman (a) has living with her a child of hers under the age of 14, or (b) is registered under the Blind Persons Acts, or (c) has a Ministry of Labour permit to allow her to obtain employment by individual effort.

WANTED, IN JANUARY, experienced qualified DISPENSER for private practice of partnership in Somerset town.—Box 3479, B.M.J.

DUTTON ONE-WEEK SHORTHAND is learnt in twelve 2-hour postal lessons.—Send 3d. in stamps for first lesson to B. J., Gt. Russell St., London, W.C.1.

DISPENSER-BOOKKEEPER desires post (Hall), experienced, doctor or firm, certificates bookkeeping typing, preferred Hertfordshire, Bucks.—Box 3482, B.M.J.

DISPENSER-BOOKKEEPER REQUIRED for firm of three doctors in Midlands, £5 per week, another Dispenser kept.—Box 3281, B.M.J.

EXPERIENCED QUALIFIED (Apoth. Hall) DISPENSER desires post with doctor, some knowledge of bookkeeping.—Box 3476, B.M.J.

LONDON COLLEGE OF PHARMACY for Women supplies Dispenser-Bookkeeper or Laboratory Technicians, training for Apothecaries Hall Assistants' Examinations and in Clinical Pathology.—Secretary, 7, Westbourne Park Road, W.2. (Bayswater 0969).

MEDICAL MSS., THESES, etc., accurately typed, editing if required, particulars on application.—M. B. Thompson, BM/PKDF, London, W.C.1.

RECEPTIONIST, YOUNG LADY, ATTRACTIVE, intelligent, wife of medical student, seeks position as receptionist, exempt, limited typing, salary £4 10s.—Box 3432, B.M.J.

SECRETARY-RECEPTIONIST seeks post to doctor, would like to learn dispensing if needed.—Box 3430, B.M.J.

THOROUGHLY CAPABLE educated woman, 1st class cook, excellent reference, desires position TAKE CHARGE DOCTOR'S HOME in London where she can have son of 15 during school holidays.—Phone Hamstead 2914.

MISCELLANEOUS

COMPRI-VENA (1937), Ltd.—The care and after-care of Varicose Veins.—In the treatment of Varicose Veins where leg support is prescribed Compri-Vena gives meticulous attention to instructions. They will gladly supply particulars of Surgical Stockings and the service they provide.—38, South Molton Street, W.1. MAYfair 0732.

DOCTORS' WATCHES.—Franklands can still supply their vital Pulse "Regd." Watches. Catalogue on request.—E. Franklands and Co., Ltd., Marie House, South Godstone, Surrey.

CARS.—ALL TYPES WANTED for spot cash.—Lamb's, Ltd., Official Government Buyers, Standard House, Southend Road, Woodford Green, Essex, WANstead 0123, Ext. 22 or 23.

ENVELOPE RESEAL LABELS, 250 3s.; 1,000 9s. 6d. Medical printing. Pre-war stationery. Samples Stamp.—Hodgson (Dept. B), Printer, Bradford.

The fact that goods made of raw materials in short supply owing to war conditions are advertised in this Journal should not be taken as an indication that they are necessarily available for export.

FOR SALE, AUSTIN EIGHT, 1939, Grey Tourer, 9,000 miles, tyres only 3,000, 40 m.p.g., excellent condition, can view. £200 cash.—Box 3412, B.M.J.

FOR SALE, IMPROVED COMPOUND MICROSCOPE, handmade by P. Carpenter, 12, Regent Street, London, with complete accessories.—Any enquiries to H. Linscott, Cumery, Thorkhill Road, Thames Ditton.

LEITZ MICROSCOPE, modern model for sale, 2 3/4", 1 1/6", and 1 1/2" lenses and stage, perfect condition, what offers?—Box 3411, B.M.J.

MEDICAL PHOTOGRAPHS and Drawings for illustration, records, etc.—Write for particulars, Eric O. Sonntag, 159, Bickenhall Mansions Baker Street, London, W.1. WELbeck 8860.

QUEEN NON-IRRITANT TOILET RANGE for prescription in allergic cases. Leaders of the profession have found these of great use as alternatives to beauty preparations and cosmetics suspected of giving rise to allergic symptoms or other irritants.—Boutalls, Ltd., 150 Southampton Row, London, W.C.1.

HOUSES, CONSULTING ROOMS

21, WIMPOLE STREET, W.1. RECONDITIONED for immediate professional occupation from 3 guineas.—Apply, Sister-in-Charge.

HOMES

PECKHAM HOUSE
112, PECKHAM ROAD, LONDON, S.E.15
Telegrams: "ALLEVATED, LONDON."

Telephone: RODNEY 2641-2642.
A Private Mental Hospital for Ladies and Gentlemen suffering from Nervous and Mental Illness, where the amenities of a comfortable home are combined with full investigation and every well-established modern treatment. TERMS FROM 3 1/2 GUINEAS WEEKLY. Illustrated Prospectus may be obtained from the PHYSICIAN-SUPERINTENDENT.

NORTHUMBERLAND HOUSE
GREEN LANES, FINSBURY PARK, N.4

A PRIVATE HOSPITAL for the treatment of mental and nervous illnesses. Conveniently situated and easy of access from all parts. Six acres of ground, facing Finsbury Park. Voluntary and Temporary Patients received without certification. Shock therapy, Psychotherapy, and other modern forms of treatment. Air-raid Shelters have been provided. Telephone: Stamford Hill 2688. Telegrams: "Subsidiary, London." For further particulars apply to the MEDICAL SUPERINTENDENT.

APPOINTMENTS

(Continued from page 17)

CONNAUGHT HOSPITAL, E.17 (for Walthamstow, Wanstead, Leyton, and Chingford). Applications are invited for the appointment of TEMPORARY HONORARY SURGEON to the Ear, Nose, and Throat Department. Candidates must be Fellows of one of the Royal Colleges of Surgeons. Applications, together with copies of three testimonials, should be received by December 11, 1943. The Hospital is one of 118 beds, including private wards.—R. Halton Harrison, General Secretary.

GERMAN HOSPITAL, Ritson Road, London, E.8. (British Voluntary Hospital under E.M.S. Scheme.) HOUSE SURGEON (B2) with some practical experience wanted immediately. R and W practitioners who now hold A posts may apply, when appointment will be limited to six months. Commencing salary £200 p.a. or more, according to experience, with full board and residence. Please apply with copies of testimonials to the Secretary.

IMPORTANT—All applicants should read the notice about qualifications required, etc., printed at the top of page 14

BOROUGH OF WEMBLEY.—The Borough Council invite applications from persons of either sex for the temporary post of **WHOLE-TIME ASSISTANT MEDICAL OFFICER OF HEALTH.** The duties will be mainly in the Maternity and Child Welfare Services of the Council, while the Officer will be required to undertake such other duties as the Medical Officer of Health, with the consent of the Council, may assign from time to time. Candidates should, subsequent to qualification, have had at least three years' experience in the practice of their profession, and special experience of midwifery and ante-natal work. They should have had hospital experience in Maternity and Child Welfare work. A Diploma in Public Health would be considered an additional recommendation. Salary scale is from £500 per annum, rising by annual increments of £25 to £700 per annum (plus the Council's scale of war-time bonus), and the commencing salary will be fixed according to ability and experience. The appointment will be subject to the successful candidate's passing a medical examination and will be terminable by one calendar month's notice on either side. Candidates should submit with their application full information as to their liability to military service, medical fitness and position as regards deferment. Applications giving particulars of qualifications and experience, should be sent to the Medical Officer of Health, Town Hall, Forty Lane, Wembley, not later than December 6, 1943. Canvassing in any form will disqualify.—Kenneth Tansley, Town Clerk.

CITY OF PORTSMOUTH. Saint Mary's Hospital.—Applications are invited from male registered medical practitioners for the appointment, limited to a period of two years, of a **SENIOR RESIDENT MEDICAL OFFICER (B1)**, to become vacant on December 11 next. Applicants should have had at least two years' hospital experience, and preference will be given to those having had previous obstetrical experience. Suitably qualified R practitioners holding B2 appointments are invited to apply. Applications from R practitioners now holding B1 appointments cannot be considered unless they have been rejected by the R.A.M.C. The salary is at the rate of £350 per annum for the first year, and £375 per annum for the second year, together with a temporary cost-of-living bonus at present payable at the rate of 8s. 9d. per week. The residential emoluments are valued at £150 per annum. Application forms may be obtained from and must be returned to the Medical Officer of Health, Northern Secondary School, Mayfield Road, Portsmouth.—Frederick Sparks, Town Clerk, Municipal Offices, Royal Beach Hotel, Southsea.

CORNELIA and EAST DORSET HOSPITAL. Poole, Dorset. **HOUSE SURGEON (A).**—Applications are invited from registered medical practitioners, male and female, for the appointment of **House Surgeon (A)**, vacant immediately, including practitioners within three months of qualification who are liable to service under the National Service Acts. Appointment will be for a period of six months. Salary is at the rate of £150 per annum, with full residential emoluments. Voluntary Hospital (E.M.S. class 1A), 192 beds, two theatres, orthopaedic department, recognized by Royal College of Surgeons for Fellowship, 2,618 operations 1942, staff mainly specialist. Applications should be sent to the undersigned.—E. A. Hart, Secretary.

ROTHERHAM HOSPITAL. General Voluntary Hospital (140 beds). **SENIOR CASUALTY OFFICER AND ORTHOPAEDIC HOUSE SURGEON (B2).** Salary £250 per annum (with full residential emoluments).—Applications are invited from medical practitioners for the above appointment, vacant January 1, 1944. The appointment will be for a period of six months. R and W practitioners who now hold A posts may apply. Applications should be sent to the undersigned.—T. H. Fletcher, Sec.-Superintendent.

SWANSEA GENERAL AND EYE HOSPITAL.—Applications are invited from registered medical practitioners, male and female, for the appointment of a **HOUSE SURGEON (A)**, now vacant, including practitioners within three months of qualification who are liable to service under the National Service Acts. If held by a practitioner who is liable under these Acts, appointment will be for a period of six months. Salary is at the rate of £150 per annum, with full residential emoluments. Applications should be forwarded to the undersigned.—O. C. Howells, Secretary-Superintendent.

SOUTH EASTERN HOSPITAL FOR CHILDREN. Sydenham, S.E.26. (Grade 1A Casualty Clearing.) **RESIDENT MEDICAL OFFICER** required from December 1. Class A. Male or female. Practitioners within three months of qualification who are liable to service under the National Service Acts may apply. If held by a practitioner liable under these Acts, appointment will be for a period of six months. Salary £150 per annum. Applications to be sent to the Secretary with copies of three testimonials.

ANCOATS HOSPITAL, Manchester, 4. **RESIDENT CASUALTY OFFICER (B1).**—Applications are invited from registered medical practitioners for the above appointment. One who has passed the F.R.C.S. examination preferred, or who has done six months as a Resident House Surgeon. Suitably qualified R practitioners who now hold B2 posts may apply. Applications from R practitioners now holding B1 posts cannot be considered unless they have been rejected by the R.A.M.C. The successful applicant will be required to do duty for the Resident Surgical Officer when that Officer is off duty. Salary £172 10s. per annum, with board, apartments, laundry, etc. Applications to be forwarded to the undersigned on or before Dec. 4.—Herbert J. Dafforne, General Supt. and Secretary.

ALTRINCHAM GENERAL HOSPITAL.—Applications are invited from registered medical practitioners for the appointment of a **HOUSE SURGEON (A)**, to become vacant after December 31, 1943, including practitioners within three months of qualification who are liable to service under the National Service Acts. If held by a practitioner who is liable under these Acts, appointment will be for a period of six months, if otherwise it will be for a period of six months with the option of a further six months. Salary is at the rate of £150 per annum, with full residential emoluments. Applications should be sent as soon as possible and addressed to General Superintendent-Secretary, Altrincham General Hospital, Altrincham, Nr. Manchester.

BATH AND WESSEX CHILDREN'S ORTHOPAEDIC HOSPITAL, Combe Park, Bath.—Applications are invited immediately from registered medical practitioners, male or female, including R and W practitioners who now hold A posts, for the appointment of **HOUSE SURGEON (B2).** The duties include fracture service cases at adjoining Royal United Hospital. Salary at the rate of £150 per annum, with board, residence, and laundry. If held by an R or a W practitioner appointment will be limited to six months.—Harold J. Fricker, Secretary.

BECKETT HOSPITAL AND DISPENSARY, Barnsley.—Applications are invited from registered medical practitioners for the appointment of **HOUSE SURGEON (A).** Salary is at the rate of £175 per annum, with full residential emoluments. Practitioners within three months of qualification and liable under the National Service Acts may apply, when appointment will be for a period of six months. Applications should be sent immediately to Arthur L. Bourne, Secretary-Supt.

DISTRICT INFIRMARY, Ashton-under-Lyne (200 beds, mainly surgical). **RESIDENT CASUALTY OFFICER (B2).**—Applications are invited from registered medical practitioners, including R practitioners who now hold A posts, for the appointment of **Resident Casualty Officer (B2)**, to become vacant immediately. If held by an R practitioner, the appointment will be limited to six months. The salary is at the rate of £225 per annum, with full residential emoluments. Applications should be sent to the undersigned immediately.—Frank Oliver, General Superintendent and Secretary.

LEIGH INFIRMARY, Lancs. General Hospital, (86 beds, 2 residents).—Applications are invited from male or female registered medical practitioners for the appointment of **HOUSE SURGEON (A)**, to become vacant December 15, 1943, including practitioners within three months of qualification who are liable to service under the National Service Acts. Applications from alien practitioners are also invited. If held by an R or W practitioner, the appointment will be for a period of six months. Salary is at the rate of £200 per annum, with full residential emoluments. Applications to be sent to the undersigned at once.—F. M. Evison, Acting Secretary.

TAUNTON AND SOMERSET HOSPITAL. Taunton (200 beds, including 64 E.M.S.)—Applications are invited from registered medical practitioners, male and female, for the post of **HOUSE PHYSICIAN (A).** Salaries at the rate of £175 p.a. resident. Six months' appointment. Practitioners within three months of qualification who are liable to service under the National Service Acts may apply.—F. J. J. Stacey, Secretary.

VICTORIA HOSPITAL, Blackpool (normal complement 200 beds, wartime complement 630 beds).—Applications are invited from registered medical practitioners, female, for the appointment of **RESIDENT ANAESTHETIST (B2)**, vacant now, including W practitioners who now hold A posts. The appointment is for a period of six months. Salary is at the rate of £300 per annum, with full residential emoluments. Applications, stating age, qualifications with dates, nationality, and present post, and accompanied by copies of three recent testimonials, should be sent to the undersigned immediately.—Walter R. Smith, General Superintendent.

ISLE OF ELY COUNTY COUNCIL. TEMPORARY COUNTY MEDICAL OFFICER AND SCHOOL MEDICAL OFFICER.—Applications are invited from suitably qualified medical practitioners for the temporary post of County Medical Officer, combined with the post of School Medical Officer, for the County of the Isle of Ely, at a salary of £900 per annum, rising by annual increments of £25 to £1,000 per annum, with travelling expenses on the Council's scale. The Officer will be required to pass satisfactorily a medical examination. Applications to be submitted to the undersigned, together with copies of not more than three recent testimonials, not later than November 27, 1943. Canvassing, directly or indirectly, will disqualify.—R. F. G. Thurlow, Clerk of the County Council, County Hall, March.

ADDENBROKE'S HOSPITAL, Cambridge. **HOUSE SURGEON TO THE SPECIAL DEPARTMENTS (GYNAECOLOGICAL, OBSTETRIC, AND OPHTHALMIC) (B2).**—Applications are invited from registered medical practitioners, male and female, for the appointment of **House Surgeon to the Special Departments** (Gynaecological, Obstetric, and Ophthalmic) (B2), vacant on Dec. 29, 1943, including R and W practitioners who now hold A posts. If held by an R or W practitioner, the appointment will be limited to six months, which is the normal period of appointment. The salary is at the rate of £200 per annum, with full residential emoluments. Applications should be sent to the undersigned not later than Wednesday, December 1, 1943.

HOUSE PHYSICIAN (A).—Applications are invited from registered medical practitioners, male and female, for the appointment of **House Physician (A)**, to become vacant on January 1, 1944, including practitioners within three months of qualification who are liable to service under the National Service Acts. If held by a practitioner who is liable under these Acts, appointment will be for a period of six months only, which is the normal period of appointment. Salary is at the rate of £130 per annum, with full residential emoluments. Applications should be sent to the undersigned not later than Wednesday, December 1, 1943.—J. A. Beard-sall, Secretary-Superintendent.

INGHAM INFIRMARY, South Shields.—Applications are invited from registered medical practitioners, male and female, for the appointment of a **HOUSE SURGEON (A)**, to become vacant on December 1, 1943, including practitioners within three months of qualification who are liable to service under the National Service Acts. If held by a practitioner who is liable under these Acts, appointment will be for a period of six months, otherwise it will be for a period of six or twelve months. Salary is at the rate of £175 per annum, with full residential emoluments. Applications should be sent to the undersigned.—John Potter, House Governor and Secretary.

MANCHESTER ROYAL INFIRMARY. RESIDENT SURGICAL OFFICER (B1).—Applications are invited from registered medical practitioners, male, for the appointment of **Resident Surgical Officer (B1)**, shortly to become vacant. Applicants should have held house appointments and had surgical experience. Preference will be given to candidates holding Diploma of F.R.C.S. Suitably qualified R practitioners holding B2 appointments are invited to apply. Applications from R practitioners now holding B1 appointments cannot be considered unless they have been rejected by the R.A.M.C. Salary is at the rate of £200 per annum, with residence. Applications should be forwarded not later than December 1, 1943, to the undersigned.—By Order, F. J. Cable, General Supt. and Sec.

ROYAL VICTORIA HOSPITAL, Dover.—Applications are invited from registered medical practitioners, male or female, for the appointment (vacant December 1) of **HOUSE SURGEON (A)** for duty at Waldershare, near Dover, and O.P. and Casualty Department in Dover. Salary at £200 per annum, with full residential emoluments. Practitioners within three months of qualification and liable under the National Service Acts may also apply, when appointment will be for a period of six months. Applications, stating age, qualifications, and nationality, together with copies of three recent testimonials, to be sent to the Secretary.

WATERLOO AND DISTRICT GENERAL HOSPITAL, Waterloo Park, Liverpool, 22.—Applications are invited from registered medical practitioners, male and female, for the appointment of a **HOUSE SURGEON (A)**, to become vacant in the middle of January, 1944, including practitioners within three months of qualification who are liable to service under the National Service Acts. If held by a practitioner who is liable under these Acts, appointment will be for a period of six months. Salary is at the rate of £225 per annum, with full residential emoluments. Applications should be sent to the undersigned as soon as possible.—James A. Willan, Secretary-Supt.

BRITISH MEDICAL BUREAU**TAVISTOCK HOUSE SOUTH.****TAVISTOCK SQUARE, W.C.1.**Telegrams: Triform, Westcent, London.
Telephone: Euston 1644 and 1645.**All Branches of Medical Accountancy undertaken**

1. **MARKET TOWN** about 50 miles N. of London. Receipts about £1,500. Panel 930. Very attractive house to rent.
2. **BERKS.**—Country. Receipts about £780 (£600 from panel). Small house, sale or rent. Scope.
3. **NR. CROYDON.**—Increasing Practice doing about £900. Panel 700. Small house for sale. Ample scope. Premium £1,000.
4. **DEATH VACANCY.**—London, N.W.11. Receipts 1943 to October about £545 (£364 from panel). House optional.
5. **SOUTH COAST.**—Half-share (about £1,900 p.a.) in increasing Practice. Panel 3,000. Modern detached house. Premium 1½ years.
6. **DERBYSHIRE.**—Practice on outskirts of good town. Receipts £2,000. Nice house and garden. Premium 1½ years by instal.
7. **LONDON, N.W.**—Medical woman's Practice. Receipts 1942 £659. Panel 72. Nice house and garden to rent. Premium £500.
8. **CORNWALL.**—Market town. Half share of about £2,500 p.a. (short Asstp.) with succession.
9. **LINCS.**—Country. Receipts 1942 £760, increasing. Small panel. Choice of hse. Good scope.
10. **W. OF ENGLAND.**—One-half share (about £1,100 p.a.). First-rate town. No panel.
11. **SURREY.**—Residential district. Receipts abt £1,400. Small panel. Very nice house to rent.
12. **DEATH VACANCY.**—S. Wales. Receipts last year £4,400. Panel 2,700. House sale or rent.
13. **S. COAST.**—Receipts about £2,000. Good-class non-dispensing. No Panel. Very nice house.
14. **N. WALES COAST.**—Receipts over £1,000. Small Panel. House to rent. Premium £1,250.
15. **W. MIDLANDS.**—Half-share of £5,400 in good-class town practice. Hospital. Prem. by arrgt.
16. **W. SUFFOLK.**—Assistants with view in country practice £3,550 p.a. Share and prem. by arrgt.
17. **MIDLANDS.**—Share of £1,500 in prosperous town practice. Panel 2,000. Short Assistantship.
18. **NOTTS-LINCS. BORDER.**—One-half share (or whole practice). Receipts about £5,000. Panel 3,500. Two houses available.
19. **S. OF ENGLAND.**—Share worth about £2,000 p.a. in country town practice. Short Assistantship.
20. **LINCS.**—Country practice about £1,200 p.a. Panel 675. Premium house and practice £2,100.

Scottish Branch, 21, Alva Street, Edinburgh. 2.
Manager, G. RUSSELL. Phone: Edin. 23969.**PERCIVAL TURNER, LTD.****MEDICAL AGENCY (Est. 60 Years).****25, MAIDEN LANE, STRAND, W.C.2.**

'Phone: TEMple Bar 9011.

Night: Walton-on-Thames 1785.

LONDON, S.E. £1,100 p.a., panel 980, appt. £250, prem. £1,000 or near, conv. house to rent.—**LANCS.** £1,800 p.a., panel 1,600, appt. £180, premium £2,250, good house and surg.—**KENT TOWN.** Assistantship with view to purchase, panel 2,200, appt. £150 and private.—**LONDON, W.1.** Good-class, about £1,200 p.a.—**MIDLAND TOWN.** share worth £1,500, panel and appt.—**BUCKS.** country, good-class, panel and appts. Over £3,000, nice house.—**MIDLANDS.** rural, £1,600, panel 950, appt. £75. Ex house and garden.—**MIDLAND TOWN.** ½ share of abt. £6,000, Panel 2,000. Chance of sev. hosp. appts.—**MIDLANDS.** country, over £1,400, panel 1,300. Clubs £225. Easy terms.—**KENT.** Country, abt. £1,400, panel 850, appts. £240, good house and land (optional).—**LONDON, W.14.** £1,000, panel 1,450, prem. £1,250. Many others. Ask for list.

ASSISTANTS AND LOCUMS REQUIRED.**BRITISH MEDICAL BUREAU****Northern Branch: 33, Cross St., Manchester, 2.**Tel.: Blackfriars 3925; after office hours
Rusholme 2549. Tel.: "Locum, Manchester."

CHESHIRE. PARTNERSHIP. Half-share of £6,500 p.a. Panel 2,500.—**LANCS. TOWN.** £1,500 p.a. Panel 1,600. Nice house.—**CHESHIRE.** £2,200. Panel 1,160. Good house to rent.—**N.W. LANCS.**—Country. Over £2,200. Panel 1,000. Good house. Many others.

LOCUMS AND ASSISTANTS REQUIRED.**WESTERN MEDICAL AGENCY**

(Dr. K. H. Bennett. Dr. W. J. Paramore.)

67/68, CHANDOS PLACE, STRAND, W.C.2.

Tel.: Temple Bar 2532.

1. **SURREY.**—Favourite part. Half share of £2,600. Small panel. Good scope. Opportunity for surgery.
2. Duration Locums required for Penzance, Torquay, Enfield, Barnet, Derby, etc.
3. **CORNWALL.**—Assistantship with definite view. £700. Outdoor. Car and petrol.

BOVRIL MEDICAL AGENCY**ALDINE HOUSE, 10-13, BEDFORD ST.,
STRAND, LONDON, W.C.2.**

Telephone: Temple Bar 1616-8—F. M. THEW.

1. **HERTS.**—Developing dist. Practice about £1,500. Panel 700. Mod. house. Good garden.
2. **MIDDX.**—Practice of abt. £900. Gd. scope. Suit. house and garden to rent.
3. **WILTS.**—½ share of approx. £9,000. Sound Practice in attract. dist. Panel 5,000. Suit. hse.
4. **LONDON, S.E.**—Very easily worked practice abt. £1,100. Panel abt. 850. Low exs. Gd. hse., rent £75. Prem. £900
5. **CENTRAL LONDON.**—Non-panel Practice abt. £1,200-£1,500. Convenient premises.
6. **DEATH VACANCY LONDON, N.W.**—Mainly panel practice of £450-£500 offering ex. scope.
7. **WARWICKS.**—Old-est. country Practice of £2,500. Panel 700. Gd. hse., gdn. Prem. 1½ yrs. or nr.
8. **YORKS.**—Sound practice of £1,127, offering ex. scope. Panel 1,227. Gd. house to rent. Prem. £1,600. £1,000 down.
9. **CORNWALL.**—½ share of £3,000 unopposed practice in attract. dist. Ex. scope. Prem. 1½ yrs.
10. **ESSEX.**—1/3 share after prelim. a'ship in very sound pract. of over £3,000. Panel 1,700.
11. **CORNWALL.**—Market town. ½ share of £2,700, prelim a'ship. Panel 1060. Prem. £1,600, instal.
12. **LANCS.**—Large town. Old-est. practice over £3,300. Suit. house. Prem. 1½ yrs. or nr. offer.
13. **SALOP.**—½ share of £4,730. Panel abt. 2,000. Fees 5s. to 2 gns. Gd. house and gdn.
14. **DEATH VACANCY.—S. WALES.** Receipts over £4,400. Panel 2,753. House rent £80 p.a. Prem. by arrangement. Prelim. locum tenency.
15. **SOMERSET.**—Country practice nr. sea of abt. £1,000. Panel 700. Appts. £235. Gd. house.
16. **CORNWALL.**—Old-est practice. Receipts abt. £1,700. Good house. pr. ductive garden, rent £100. Prem. £2,200, or near, part instal.
17. **FAVOURITE S. COAST TOWN.**—1/2 share sound practice. Receipts £4,450. Panel over 3,000. Excl. house. Prem. £2,868.
18. **LONDON, E.**—Practice £2,250. £700 appts. Small panel. House to rent. Prem. £2,000 or nr.
19. **S.W. COUNTRY.**—Country practice of £750 offering considerable scope. Panel 600. Good house, 1 acre garden. Prem. £1,000 or nr.
20. **W. ENGLAND.**—Non-panel practice in residential town averaging £2,500. Suitable house.

**LOCUM TENENS & ASSISTANTS (men & women)
URGENTLY REQUIRED.**—Details on application.**INSURANCE IS TOO TECHNICAL
FOR THE AMATEUR**

You must have advice about it, and it must be unbiased advice. This can alone be obtained from this Agency, founded expressly for the purpose. It has no shareholders and the directors get no fees. Your interests solely are considered, and you receive substantial rebates on premiums.

LIFE

Whole Life and Endowment Assurances. With or without War Risks cover. Full Service War Risks covered in this country at normal premium. Children's Deferred and Educational Assurances. Annuities.

**SICKNESS
& ACCIDENT**

Permanent Contracts. Special terms for Serving Officers.

MOTOR

Special Doctor's Policy. Complete cover, low rates.

**FIRE
HOUSEHOLD
WAR DAMAGE**

Policies arranged to meet all requirements.

MEDICAL INSURANCE AGENCY LTD.

**B.M.A. House, Tavistock Square, London, W.C.1
or 6, Drumsheugh Gardens, Edinburgh**

Chairman: Sir Robert Hutchison, Bt., F.R.C.P.

Acting Manager: R. H. Burr.

NOVOCAIN

BRAND ETHOCAIN HYDROCHLORIDE

The Original Preparation

English Trade Mark No. 276477 (1905)

**THE SAFEST AND MOST RELIABLE
LOCAL ANAESTHETIC**

Six to seven times less toxic than Cocaine.

Despite the War NOVOCAIN preparations are, and will continue to be, available in all forms, viz.:

Solutions in Ampoules, 1 oz. and 2 oz. Bottles
Stopped or Rubber Capped.

Tablets in various sizes and Powder.

Write for
Literature.

Sold under
Agreement.

**COCAINE FREE
LOCAL ANAESTHETIC**

Does not come under the Restrictions
of the Dangerous Drugs Act.

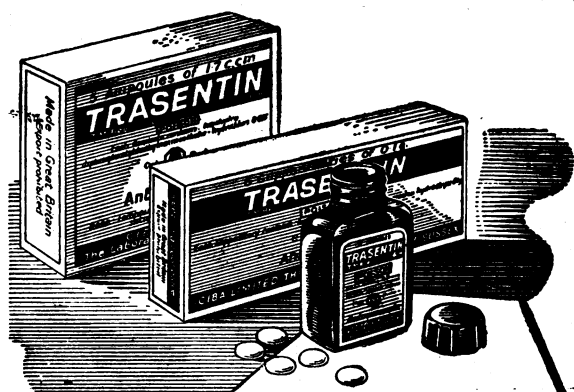
THE SACCHARIN CORPORATION Ltd

84, Malford Grove, Snaresbrook, London, E.18

Grams: "Sacarino, Legstone, London." Phone: Wanstead 3287

Australasian Agents:

J. L. BROWN & CO., 123, William Street, Melbourne, C.1



RELIEF OF
Spasm

TRASENTIN-6H

REGISTERED TRADE MARK

This improved antispasmodic, a modification of the original Trasentin, and whose pharmacological properties* have been designated as "remarkable," suppresses spasms of the

GASTRO-INTESTINAL TRACT and GENITO-URINARY SYSTEM

without unpleasant side-effects on the heart, pupil, accommodation or salivary glands.

* J. Pharmacol., (1940), 69, 331.

Tablets for oral administration in bottles of 20 and 100.

Ampoules for subcutaneous or intramuscular (not intravenous) injection in boxes of 5 and 20.

Suppositories for rectal administration in boxes of 5.

Literature on request

Telephone:
Horsham 1234



Telegrams:
Cibalabs, Horsham

THE LABORATORIES, HORSHAM, SUSSEX.



*Stimulant of the
Parasympathetic System*

"MORYL"

TRADE MARK

CARBAMINOYLCHOLINE CHLORIDE

BRAND

- Corrective of manifestations of autonomic imbalance.
- Also effective orally.

While "Moryl" finds extensive employment in post-operative intestinal stasis and urinary retention, it has a wide field of indications, including paroxysmal tachycardia, anxiety neurosis, hypertension, primary and secondary glaucoma and ozaena.

Hypnotic — Sedative
TETRONOX

TRADE MARK

BRAND

Barbitone with phenacetin, phenazone, hexamine and magnesium peroxide

Enhanced power of barbitone through careful combination with other drugs—reduced toxicity; no cumulative action or injurious effects on circulation, respiration or gastro-intestinal tract.

Further information and samples for Clinical trial will gladly be made available, on request

SAVORY & MOORE Ltd.,
61, Welbeck Street, London, W.1