

TRENDS IN GENERAL PRACTICE 1977

*A collection of essays by Members of
The Royal College of General Practitioners*

Contents

Foreword	MICHAEL LINNETT (Chairman of Council of the R.C.G.P.)
Preface	JOHN FRY (General Editor)
Historical Background	IRVINE LOUDON
The Place of Primary Care	JOHN FRY
Patterns of Work	JOHN HOWIE
The Content of Practice	JOHN FRY
Child Care	MARGARET POLLAK
The Elderly	KEITH THOMPSON
Obstetrics	GARETH LLOYD
Fertility and Family Medicine	JOHN McEWAN
Induced Abortion	PETER FRANK
The General Practitioner and the Hospital	IRVINE LOUDON
The Health Team	BARRY REEDY
Premises and Organisation	MICHAEL DRURY
Prescribing	JOHN HOWIE
Education for General Practice	DONALD IRVINE
Future Needs	JOHN FRY

Demy Octavo

Paperback

193 Pages

ISBN 0 7279 0029 3

Price: Inland £4.50; Overseas US\$11.25, including postage

(Members of the Royal College of General Practitioners may purchase this book at: Inland £3.50; Overseas US\$8.75)

Payment must be enclosed with order or a surcharge of 30p will be made for rendering invoices and statements

ORDER FROM: The Publisher, BRITISH MEDICAL JOURNAL, BMA House,
Tavistock Square, London WC1H 9JR, or through any leading bookseller

MOTORING MEDICS

DR. MURRAY MACKAY, BIRMINGHAM



Motor's issue week ending July 22 features a special "Medical Report" on the long-standing relationship between the motor car and the medical profession. There's an historical feature on racing drivers who were also doctors, with the emphasis on Dr Benjafield, one of the Bentley drivers of the '20s and '30s. And the imperturbable Doc. Shepherd who took up racing at the mature age of 58, in a modified Austin A35 and later an A40, to become saloon car champion in the early '60s. The sporting features are complemented by our interview with the doctors in the Birmingham Accident Research Group, a chief medical officer who presides at race meetings, plus "Doctors' Choice" which provides a brief survey of cars suitable for medical practitioners at different levels of experience and success. All this, plus our usual road tests, reports, sports features and motoring news in: —

Motor

JULY 22nd, ISSUE 25p.



BRITISH MEDICAL JOURNAL, 22 JULY 1978

Wellcome

RESEARCH IS OUR ONLY SHAREHOLDER

successful scriptwriting

SEPTRIN—for success 9 times out of 10.

Worldwide clinical studies, involving over 7800 patients with acute and chronic lower respiratory infections, have shown that 91% were successfully treated with SEPTRIN.¹

SEPTRIN is effective against all the major pathogens, including *I. influenzae* and *Strep. pneumoniae*.

¹Data on file.

SEPTRIN contains trimethoprim and sulphamethoxazole. All prescribing information is available on request. Wellcome Medical Division, The Wellcome Foundation Ltd., Berkhamsted, Herts

SEPTRIN A FIRST CHOICE IN CHEST INFECTIONS

TRADE MARK

DISCOUNT HOUSES

UP TO 50% DISCOUNT

CARPETS FURNITURE DIVANS

COHAR DISTRIBUTORS LIMITED EST. 1958

Glasgow: Cohar's Glasgow Furnishing
Exhibition 25-37 Queen St., 041-221 5064

Aberdeen: 89 Union St., 0224 573359

MAIL ORDER U.K. CARPETS NO CARRIAGE

UP TO 45% DISCOUNT

SEWCRAFT SEWING MACHINES

We guarantee our prices are lowest in Gt. Britain.
We accept Cash, Cheque, Barclaycard, Access Card.
WE STOCK ALL TOP MAKES.

* Part Exchange welcome * Full After-Sales Service
* Makers' Usual Guarantees * Full Demonstration Facilities * Immediate Free Delivery.

Mail order throughout British Isles. Send for our colour catalogue now to Dept. BMA at our Thames St. branch or phone for discount quote to 01-748 0808, 01-748 5511, 01-549 3801 or 01-546 5454.

HAMMERSMITH: 150, 150a King St., London, W.6. 34 Thames St., Kingston-on-Thames, Surrey.
Mon-Sat 9 am-5.30 pm
Half day Thurs. Mon-Sat 9 am-5.30 pm

AZAT

OFFER BEST BARGAINS FOR

Tropicalised goods, domestic electrical appliances, Radios, T.V.'s for export and Home Sales. Write, visit or telephone to: AZAT (London) Limited, 61 Charlotte St., London W1A 4DN, P.O. Box 4DN.

Telephone: 01 580 4632 (4 lines)
Telex 22833 AZAT G 167

25%-50% DISCOUNT

PLUS FREE DELIVERY IN UK.

NO EXTRAS!

Bigger Choice - Bigger Savings
25% - 50% Discount
on Branded Furniture Beds, Bedding, Carpets Curtains and Fabrics

- * Free delivery right to your door.
- * All areas of UK mainland/I.O.W.
- * Postal/Telephone orders welcomed.
- * Personal service before and after sale.
- * Low interest credit facilities on discounted prices.
- * All items covered by manufacturers' guarantee.

Write, call or telephone today for free estimates and quotations.

Over 30 years of service

SAVE with Bains of Ilford
133 Ilford Lane, Ilford, Essex. Tel: 01-553 1011/4

FURNITURE CARPETS

15%-33% DISCOUNT

- All leading brands
- Carpet fitting available
- Delivery throughout UK



Hours: Mon. to Sat. 9.00 - 5.30
Sat. 9.00 - 5.00 (London only)
BRANCHES CLOSE SATURDAYS at 12.30 pm

Orders by post or phone accepted or write for introductory brochure to Dept. BMJ

Dodson Bull Choose with confidence

Established 1961. Assets exceed £600,000

Barbican Furnishing Centre (Opposite Barbican Underground Stn.)
100 Aldersgate Street, London EC2Y 8AE Telephone: 01 628 7020

ABERDEEN: 11 Exchange St., AB1 2NH. Tel: 54055/6
BIRMINGHAM: 164 Edmund St., B3 2HB. Tel: 021-236 5862
BOURNEMOUTH: 268 Old Christchurch Rd., BH1 1PH. Tel: 21248
BRIGHTON: 2-5 North Road, BN1 1YA. Tel: 606402
BRISTOL: 2-3 Royal London Hse., Queen Charlotte St., BS1 4EX. Tel: 28857
EXETER: 157 Fore St., EX4 3AT. Tel: 32019
FALMOUTH: 35 Killigrew St., TR11 3PW. Tel: 313555
GLASGOW: 166 Howard St., G1 4HA. Tel: 041-221 3278
IPSWICH: 116-118 St. Helens St., IP4 2LE. Tel: Ipswich 210268/9
LEEDS: 12 Great George St., LS1 3DW. Tel: 41451
MANCHESTER: 55-61 Lever St., M1 1DE. Tel: 061-236 3687/8/9
NEWCASTLE-upon-TYNE: 90-92 Pilgrim St., NE1 6SG. Tel: 20321/21428
WESTCLIFF-on-SEA: 495 London Rd., SS0 9LG. Tel: Southend 46569 (167)

NOTICE TO ADVERTISERS

Display Advertisements

Applications for advertisement space and for rates should be addressed to the Advertisement Manager, *British Medical Journal*, B.M.A. House, Tavistock Square, London WC1H 9JR. 01-387 4499. Telegrams: Aitiology, London WC1. Telex 265929.

Classified Advertisements

Please write advertisements and name and address clearly in BLOCK CAPITALS and send to the Advertisement Manager, *British Medical Journal*, B.M.A. House, Tavistock Square, London WC1H 9JR. For immediate insertion please enclose cheque in payment and state whether member or non-member. Classified rates for Doctors' advertisements are as follows:

MEMBERS RATE: Minimum charge £2.00 for eighteen words, additional words at the rate of 50p for each six or less. Name and address count word for word. A Box Number counts as three words, and an additional charge of 40p is made for sorting and forwarding Box Number replies.

NON-MEMBERS RATE: Minimum charge £3.30 for eighteen words, additional words at the rate of £1.10 for each six or less. Name and address count word for word. A Box Number counts as three words, and an additional charge of 40p is made for sorting and forwarding Box Number replies.

APPOINTMENTS: EDUCATIONAL: NOTICES AND HOMES: Minimum charge £2.88 for four lines and 72p for each additional line. Box Number address counts as one line, and 40p to be added for postage of replies.

GENERAL AND COMMERCIAL (TRADE): Personal: Accommodation: Nursing: Consulting Rooms: Houses and Property: Travel: Hotels: Nursing: Medical and Secretarial Agencies: Commercial. Minimum charge £3.60 for 18 words including name and address and telephone number. Each additional six words or less £1.20. Box No's count as three words. Advertisers using a box number should add 40p for postage replies.

Semi-Display Advertisements

£5.50 per single column cm and pro rata. Full page £550. Half page £275. **Mechanical Data:** Classified: col. length 25.7cm, single col. width 4.4cm, double col. width 9.3cm, 3 col. width 14.2cm, full page width 19.1cm. Minimum depth of semi-display advertisements is three single column centimetres. Complete artwork required for s.c. semi-display advertisements. Printed offset litho.

All classified advertisements, subject to approval, will appear in the forthcoming issue provided they reach this office not later than 10a.m. on the Friday of the week preceding date of issue. Semi-display advertisements must reach this office by 10a.m. on the Tuesday of the week preceding date of issue.

Cancellation and corrections of advertisements must be received before 12 noon on the Friday of the week preceding date of issue (issues affected by public holidays excepted).

It is requested that when stamped addressed envelopes are enclosed in response to advertisements advertisers will ensure that a reply is sent.

Every effort is made to ensure the accuracy of advertisements appearing in the Journal. No recommendation is implied by acceptance, and the Editor of the *British Medical Journal* reserves the right to refuse, discontinue or interrupt the insertion of any advertisement.

NOTICE TO READERS

REPLIES TO BOX NUMBERS. The names and addresses of advertisers under box numbers are held by us in strict confidence and cannot be disclosed. Each Box Number should be addressed separately. Two or more replies can be enclosed in one envelope. The replies will be forwarded to the advertisers in plain envelopes.

NOTICE TO SUBSCRIBERS

United Kingdom and Irish Republic Edition. The annual subscription rates for members of the medical profession who are not members of the B.M.A. is £40.00. Subscriptions can be ordered direct from the Subscription Manager, *British Medical Journal*, B.M.A. House, Tavistock Square, London WC1H 9JR, or through any leading subscription agent or bookseller.

Overseas Edition (not containing classified advertisements). The rate for non-members is US\$56.00 or the equivalent in local currencies, direct from the Subscription Manager. Orders can also be placed through any leading subscription agent or bookseller. Readers in the U.S.A. can send their subscription order with or without payment to: *British Medical Journal*, 1172 Commonwealth Avenue, Boston, Mass. 02134.

Single Copies of issues published in the current year cost 80p in the United Kingdom and Irish Republic and US\$2.00 overseas. Back number prices on application to the Subscription Manager.

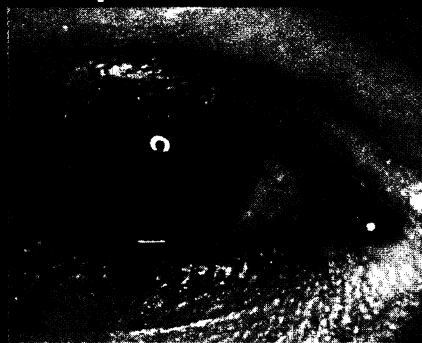
Introducing

IC for BTC

Tanderil® Chloramphenicol eye ointment.

An effective non-corticosteroid anti-inflammatory/antibacterial eye preparation indicated for inflammatory conditions of the eye such as:-

Blepharitis



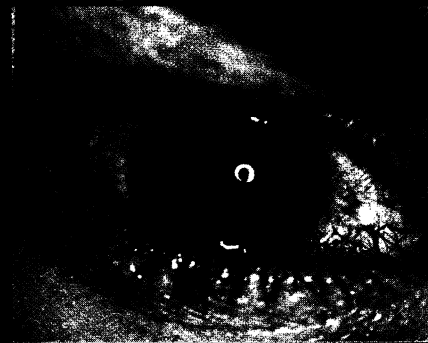
Tanderil® Chloramphenicol eye ointment will relieve the chronic inflammation and treat the primary or secondary bacterial infection.

Trauma



Tanderil® Chloramphenicol eye ointment will soothe the eye, control the inflammatory response and prevent bacterial infection.

Conjunctivitis



Tanderil® Chloramphenicol eye ointment will relieve the inflammation and resolve bacterial infection without enhancing virus replication.

Tanderil® Chloramphenicol eye ointment is available as a white to yellowish white soft ointment containing 10% oxyphenbutazone B.P. and 1% chloramphenicol B.P. as active ingredients and phenyl ethyl alcohol 0.5% as a preservative.

Full prescribing information is available.

Geigy Pharmaceuticals, Macclesfield, Cheshire SK10 2LY Telephone (0625) 21933

Geigy