

***"The ideal chemotherapeutic agent ...
should exhibit selective and effective
antimicrobial activity, and it should
be bactericidal rather than bacteriostatic."***

Goodman, L.S. and Gilman, A. (eds) (1975). *The Pharmacological Basis of Therapeutics*, 5th Ed, New York; MacMillan.

in vivo Results

Staphylococcus aureus after 3 days treatment with Erythrocin 500. Intracellular dissolution almost total. Surface defects consistent with protein synthesis inhibition.

After 3 days therapy pneumococcus exhibits marked cellular deformity with secondary cell wall and membrane changes.

Beta-haemolytic streptococcus after 5 days treatment with Erythrocin 500. Dissolution of cellular integrity is almost total and cellular debris can be seen quite clearly.



The Bactericidal Potency of ERYTHROCIN *effective · selective* 500



Pictures taken from an *in vivo* co-operative study by Merle Balbirsingh *et al* (in Press)

Full prescribing information on Erythrocin 500 (Erythromycin Stearate, Abbott) is available on request from Abbott Laboratories Ltd., Queenborough, Kent, ME11 5EL.

EC 352

ST. ANDREW'S HOSPITAL NORTHAMPTON

PRIVATE PSYCHIATRIC CARE— A COMPREHENSIVE FACILITY

St. Andrew's aims to provide the best in psychiatric care in a comfortable and relaxed environment. Staffed by eight full-time Consultant Psychiatrists, three Clinical Psychologists and with a full complement of skilled nursing and rehabilitation staff, the hospital offers a broad range of psychiatric treatments. Care is provided on a short, medium and long term basis and the following specific units are available:

- SHORT TERM ACUTE TREATMENT
- ALCOHOL TREATMENT
- BEHAVIOUR MODIFICATION
- DAY HOSPITAL
- PSYCHOGERIATRIC
- BRAIN DAMAGE AND EPILEPSY INVESTIGATION
- PSYCHOTHERAPY
- MENTAL HANDICAP

Out-patient facilities are available at the hospital, at 148 & 152 Harley Street, London W1, Oxford and Bedford.

St. Andrew's is an Independent Hospital and subscribers to the main Private Contributory Schemes may claim benefits within the terms of these schemes.

Further details and brochures may be obtained from:
The Medical Director, St. Andrew's Hospital,
Northampton (Telephone 0604 — 21311).

TODAY'S TREATMENT/2

The first volume of *Today's Treatment* has proved a best-seller. Doctors clearly welcome its down-to-earth advice on the selection of effective remedies for common disorders. The second volume, just published covers endocrine and metabolic diseases, cardiovascular disorders, and the alimentary system. Again the chapters are based on articles first published in the *BMJ*; and the advice provides busy practitioners with a reliable working manual.

Demy Octavo *Paperback* *216 pages*
ISBN 0 7279 0025 0

**Price: Inland £4.00; Abroad US\$10.00
including postage**

Payment must be enclosed with order or a surcharge of 30p will be made for rendering invoices and statements.

ORDER FROM: The Publisher, BRITISH MEDICAL JOURNAL, B.M.A. House, Tavistock Square, London WC1H 9JR or through any leading bookseller



ACNE? prescribe patient confidence

"Acne is an almost universal complaint in adolescence." *

"Many patients when they seek the help of their doctor are depressed, discouraged and disillusioned. Their own efforts at treatment have failed, or the first prescription was not the cure they anticipated. In the management of acne the patient must appreciate that he or she may have to persevere with treatment throughout their teens, and it should be emphasised that in this way one hopes to limit as far as possible the severity of the lesions and prevent severe or permanent scarring." *

When patients like these ask for your help remember that clinical reports show that acne responds to Quinoderm.

Available as Quinoderm
with Hydrocortisone Cream 30G. for initial treatment.
Quinoderm Cream 25G. for subsequent treatment.

* Practitioner, 1970, 204, 639

Quinoderm Hydrocortisone 30G.
Benzoyl Peroxide 10.0%
Potassium Hydroxyquinoline
Sulphate 0.5%
Hydrocortisone 1%
in an astringent cream base

Quinoderm Cream 25G
Benzoyl Peroxide 10.0%
Potassium Hydroxyquinoline
Sulphate 0.5%
in an astringent cream base

Quinoderm

Full prescribing information on request; Quinoderm Ltd. Manchester Road, Oldham OL8 4BR.

Technological Aids to Microbiology

R. E. Trotman

An easily assimilated, critical exposition of the vital information one needs to know about simple technological aids, and how they can be used to advantage in bacteriology laboratories.

Brief discussions of a few of the many aids that are available in each of fifteen categories of devices are given by way of example, and readers particularly interested are guided to the relevant literature, thus enabling them to pursue their interest in more detail.

96 pages 44 illustrations Paper £4.95

Publication August



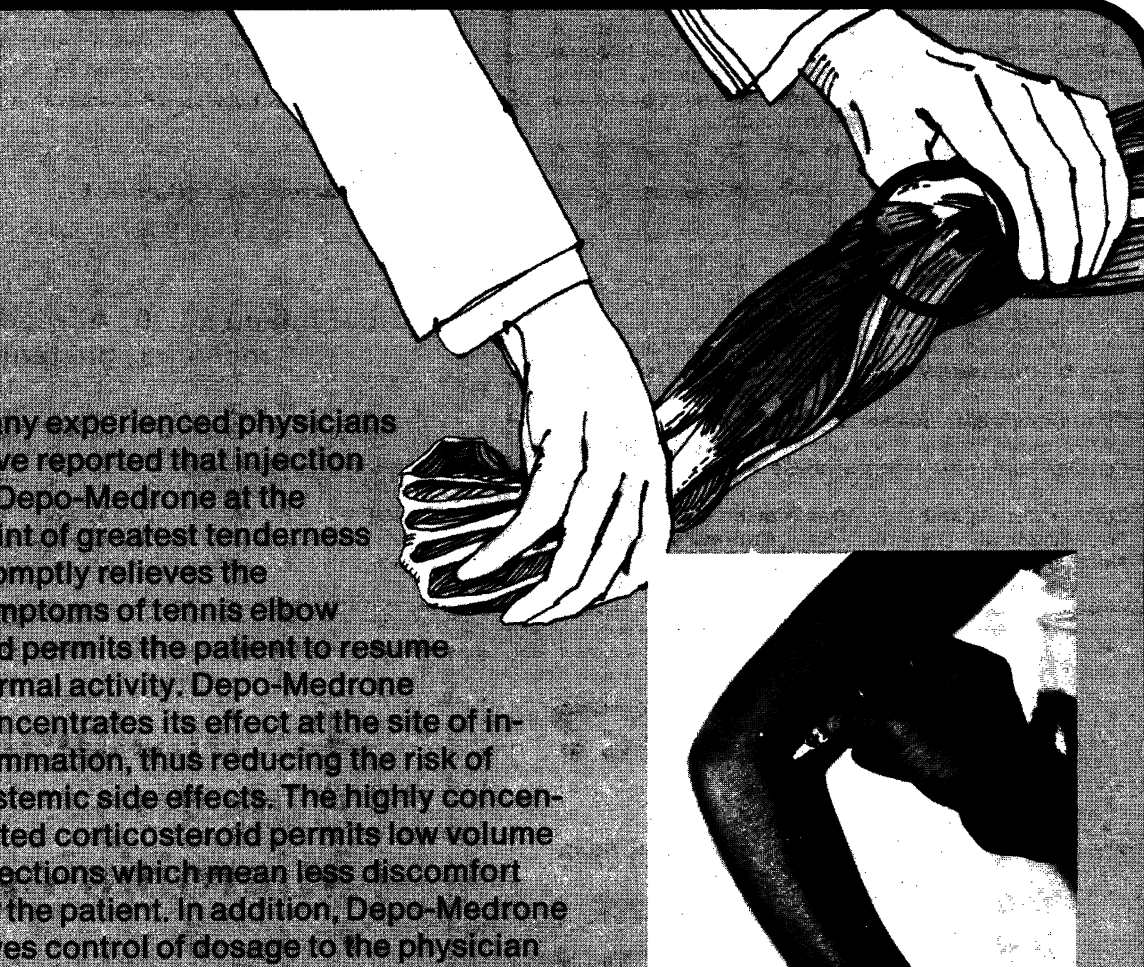
Edward Arnold

41 Bedford Square, London WC1B 3DQ

when a small lesion limits mobility

DEPO-MEDRONE

administered locally, can quickly restore it



Many experienced physicians have reported that injection of Depo-Medrone at the point of greatest tenderness promptly relieves the symptoms of tennis elbow and permits the patient to resume normal activity. Depo-Medrone concentrates its effect at the site of inflammation, thus reducing the risk of systemic side effects. The highly concentrated corticosteroid permits low volume injections which mean less discomfort for the patient. In addition, Depo-Medrone gives control of dosage to the physician and eliminates the possibility of dosage error by the patient.

Supplied as 40 mg./ml. methylprednisolone acetate in 1 ml., 2 ml., and 5 ml. vials.

Full product information available upon request



7012 REGISTERED TRADEMARK: MEDRONE
TRADEMARK: DEPO-MEDRONE UK 0857.1

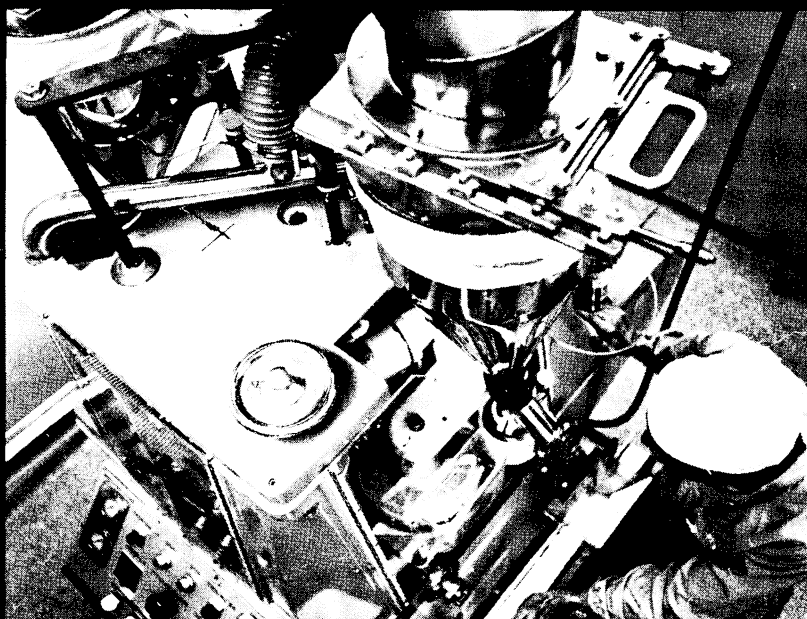
UPJOHN LIMITED • CRAWLEY • WEST SUSSEX

Distributor for the Republic of Ireland:
Cahill May Roberts Limited
P.O. Box 501
Chapelizod, Dublin 20

DISCOVERY—

In 1929, the pure crystalline digoxin was isolated from *digitalis lanata* by Wellcome research workers.

Digitalis lanata



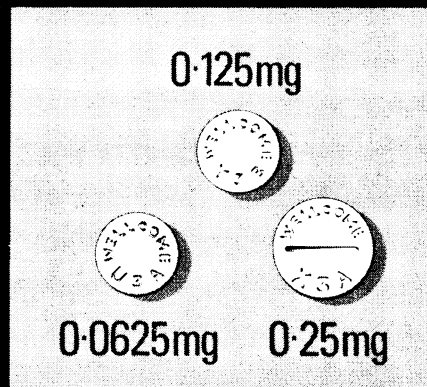
Wellcome production at Dartford, Kent

CONSISTENCY—

Tablet equivalence has been maintained by the highest standards of manufacture.

FLEXIBILITY—

The LANOXIN tablet range (plus the PG Elixir and Injection) offers greater flexibility of dosage.



LANOXIN

TRADE MARK

Wellcome research into practice

Full prescribing information about Lanoxin (digoxin) is available on request.
Wellcome Medical Division, The Wellcome Foundation Ltd., Berkhamsted, Herts



STATISTICS AT SQUARE ONE

by T. D. V. SWINSCOW

from the British Medical Journal

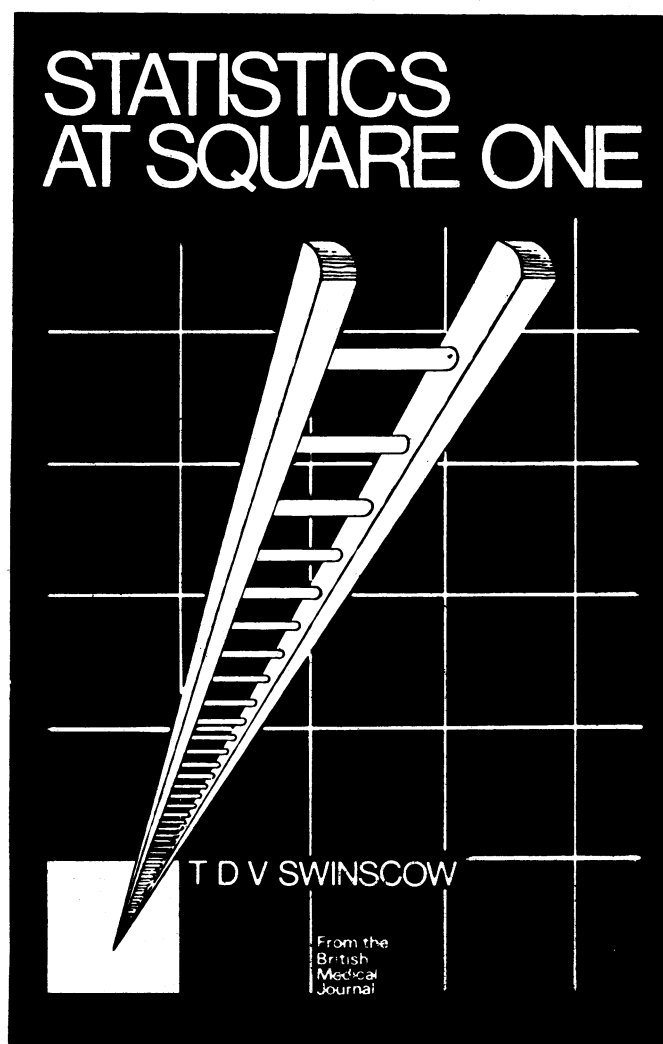
The statistical testing of data is indispensable in many types of medical investigation and a help on countless occasions in clinical practice. This book provides step-by-step instruction. Subjects covered include standard deviation, χ^2 tests, t tests, non-parametric tests and correlation. Methods specially adapted to pocket calculators.

"The ability to put symbols in sequence may well be one of the greatest advances in man's development. . . . This excellent and attractive volume will give you an idea into which category an article or projected article fits. The ink you save may be your own. It is superb value."

O'Donnell, Barry, *British Medical Journal*, 1977, 1, 451.

"... this gem of a practical booklet squeezes the essence of biostatistics into 75 well-written, well-organized pages. Newcomers to the field will like the way obscure concepts are clarified; experts will find the book valuable as a teaching aid."

de Jong, Rudolph H., *J.A.M.A.*, 1977, 237, 1874



Third edition

Revised

Now available

PRICE: Inland £2.00

Overseas US\$5.00

Payment must be enclosed with order or a surcharge of 30p will be made for rendering invoices and statements

ORDER YOUR COPY NOW

From: The Publisher,
British Medical Journal,
BMA House,
Tavistock Square,
London WC1H 9JR

or through any leading bookseller

DISCOUNT HOUSES

up to 50% DISCOUNT

CARPETS FURNITURE DIVANS

COHAR DISTRIBUTORS LIMITED EST.1958

Glasgow: Cohar's Glasgow Furnishing
Exhibition 25-37 Queen St., 041-221 5064

Aberdeen: 89 Union St., 0224 573359

MAIL ORDER U.K. CARPETS NO CARRIAGE

UP TO 45% DISCOUNT

SEWCRAFT SEWING MACHINES

Mail order throughout British Isles. Send for our colour catalogue now to Dept. BMA at our Thames St. branch or phone for Discount quote to 01-748 0808, 01-748 5511, 01-549 3801 or 01-546 5454.

HAMMERSMITH: 150 KINGSTON:
150a King St., London, W.6. 34 Thames St., Kingston-on-Thames, Surrey.
Mon-Sat 9 am-5.30 pm Mon-Sat 9 am-5.30 pm
Half day Thurs

We guarantee our prices are lowest in Gt. Britain. We accept Cash, Cheque, Barclaycard, Access Card. WE STOCK ALL TOP MAKES.

* Part Exchange welcome * Full After-Sales Service
* Makers' Usual Guarantees * Full Demonstration Facilities * Immediate Free Delivery.

AZAT

OFFER BEST BARGAINS FOR

Tropicalised goods, domestic electrical appliances, Radios, T.V.'s for export and Home Sales. Write, visit or telephone to: AZAT (London) Limited, 61 Charlotte St., London W1A 4DN, P.O. Box 4DN.

Telephone: 01 580 4632 (4 lines)
Telex 22833 AZAT G 167

UP TO 40% DISCOUNT

On Carpets, All Makes available. British & Oriental. Fitted carpets are our speciality. We can send you our quotation for any make. FREE Delivery 25% DISCOUNT. Furniture, Kitchen Units, Beds. CREDIT TERMS AVAILABLE. Call, write or phone G. L. CARPETS & FURNISHERS LTD., 1, St. Stephens Parade, Green Street, London, E.7. Phone 01-472 3219. 167

25%-50% DISCOUNT

PLUS FREE DELIVERY IN UK.

NO EXTRAS!

Bigger Choice - Bigger Savings

25% - 50% Discount on Branded Furniture Beds, Bedding, Carpets Curtains and Fabrics

- * Free delivery right to your door. All areas of UK mainland/I.O.W.
- * Postal/Telephone orders welcomed.
- * Personal service before and after sale.
- * Low interest credit facilities on discounted prices.
- * All items covered by manufacturers' guarantee.

Write, call or telephone today for free estimates and quotations

Over 30 years of service

SAVE with Bains of Ilford

133 Ilford Lane, Ilford, Essex. Tel: 01-553 1011/4

FURNITURE CARPETS

15%-33 1/3% DISCOUNT

- All leading brands
- Carpet fitting available
- Delivery throughout UK

Hours: Mon. to Fri. 9.00 - 5.30
Sat. 9.00 - 5.00 (London only)
BRANCHES CLOSE SATURDAYS at 12.30 pm

Orders by post or phone accepted or write for introductory brochure to Dept. BMJ

Dodson Bull Choose with confidence

Established 1961 Assets exceed £600,000

Barbican Furnishing Centre (Opposite Barbican Underground Stn.)
100 Aldersgate Street, London EC2Y 8AE Telephone 01 628 7020

ABERDEEN: 11 Exchange St., AB1 2NH. Tel: 54055/6
BIRMINGHAM: 164 Edmund St., B3 2HB. Tel: 021-236 5862
BOURNEMOUTH: 268 Old Christchurch Rd., BH1 1PH. Tel: 21248
BRIGHTON: 2-5 North Road, BN1 1YA. Tel: 606402
BRISTOL: 2-3 Royal London Hse., Queen Charlotte St., BS1 4EX. Tel: 28857
EXETER: 157 Fore St., EX4 3AT. Tel: 32019
FALMOUTH: 35 Killigrew St., TR11 3PW. Tel: 313555
GLASGOW: 166 Howard St., G1 4HA. Tel: 041-221 3278
IPSWICH: 116-118 St. Helens St., IP4 2LE. Tel: Ipswich 210268/9
LEEDS: 12 Great George St., LS1 3DW. Tel: 41451
MANCHESTER: 55-61 Lever St., M1 1DE. Tel: 061-236 3687/8/9
NEWCASTLE-upon-TYNE: 90-92 Pilgrim St., NE1 6SG. Tel: 20321/21428
WESTCLIFF-on-SEA: 495 London Rd., SS0 9LG. Tel: Southend 46569 (167)

All branches have a comprehensive range of carpets but now half our showroom space in London, Aberdeen, Bristol, Glasgow, Manchester, and Newcastle is devoted to furniture and fabrics. All goods can be obtained from any branch. Simply discuss your requirements with the manager - he will be pleased to help if required.

We can positively offer you a better service, and probably a better price.

NOTICE TO ADVERTISERS

Display Advertisements

Applications for advertisement space and for rates should be addressed to the Advertisement Manager, *British Medical Journal*, B.M.A. House, Tavistock Square, London WC1H 9JR. 01-387 4499. Telegrams: Aitiology, London WC1. Telex 265929.

Classified Advertisements

Please write advertisements and name and address clearly in BLOCK CAPITALS and send to the Advertisement Manager, *British Medical Journal*, B.M.A. House, Tavistock Square, London WC1H 9JR. For immediate insertion please enclose cheque in payment and state whether member or non-member. Classified rates for Doctors' advertisements are as follows:

MEMBERS RATE: Minimum charge £2.00 for eighteen words, additional words at the rate of 50p for each six or less. Name and address count word for word. A Box Number counts as three words, and an additional charge of 40p is made for sorting and forwarding Box Number replies.

NON-MEMBERS RATE: Minimum charge £3.30 for eighteen words, additional words at the rate of £1.10 for each six or less. Name and address count word for word. A Box Number counts as three words, and an additional charge of 40p is made for sorting and forwarding Box Number replies.

APPOINTMENTS: EDUCATIONAL: NOTICES AND HOMES: Minimum charge £2.88 for four lines and 72p for each additional line. Box Number address counts as one line, and 40p to be added for postage of replies.

GENERAL AND COMMERCIAL (TRADE): Personal: Accommodation: Nursing: Consulting Rooms: Houses and Property: Travel: Hotels: Nursing: Medical and Secretarial Agencies: Commercial. Minimum charge £3.60 for 18 words including name and address and telephone number. Each additional six words or less £1.20. Box No's count as three words. Advertisers using a box number should add 40p for postage replies.

Semi-Display Advertisements

£5.50 per single column cm and pro rata. Full page £550. Half page £275. **Mechanical Data:** Classified: col. length 25.7cm, single col. width 4.4cm, double col. width 9.3cm, 3 col. width 14.2cm, full page width 19.1cm. Minimum depth of semi-display advertisements is three single column centimetres. Complete artwork required for s.c. semi-display advertisements. Printed offset litho.

All classified advertisements, subject to approval, will appear in the forthcoming issue provided they reach this office not later than 10a.m. on the Friday of the week preceding date of issue. Semi-display advertisements must reach this office by 10a.m. on the Tuesday of the week preceding date of issue.

Cancellation and corrections of advertisements must be received before 12 noon on the Friday of the week preceding date of issue (issues affected by public holidays excepted).

It is requested that when stamped addressed envelopes are enclosed in response to advertisements advertisers will ensure that a reply is sent.

Every effort is made to ensure the accuracy of advertisements appearing in the Journal. No recommendation is implied by acceptance, and the Editor of the *British Medical Journal* reserves the right to refuse, discontinue or interrupt the insertion of any advertisement.

NOTICE TO READERS

REPLIES TO BOX NUMBERS. The names and addresses of advertisers under box numbers are held by us in strict confidence and cannot be disclosed. Each Box Number should be addressed separately. Two or more replies can be enclosed in one envelope. The replies will be forwarded to the advertisers in plain envelopes.

NOTICE TO SUBSCRIBERS

United Kingdom and Irish Republic Edition. The annual subscription rates for members of the medical profession who are not members of the B.M.A. is £40.00. Subscriptions can be ordered direct from the Subscription Manager, *British Medical Journal*, B.M.A. House, Tavistock Square, London WC1H 9JR, or through any leading subscription agent or bookseller.

Overseas Edition (not containing classified advertisements). The rate for non-members is US\$56.00 or the equivalent in local currencies, direct from the Subscription Manager. Orders can also be placed through any leading subscription agent or bookseller. Readers in the U.S.A. can send their subscription order with or without payment to: *British Medical Journal*, 1172 Commonwealth Avenue, Boston, Mass. 02134.

Single Copies of issues published in the current year cost 80p in the United Kingdom and Irish Republic and US\$2.00 overseas. Back number prices on application to the Subscription Manager.

DON'T FORGET

As a fast acting diuretic
Burinex^{*} K
is unbeatable...

as a potassium
supplement it's
unforgettable

Your patients rarely forget to take their 'water pill' but all too frequently fail to take their potassium supplement if you prescribe it separately.¹ Burinex K solves this problem because Burinex the 'most effective natriuretic agent'² 'coats' the potassium core - to make it truly unforgettable. In addition - because of the shape and size - it's easier to swallow than the most commonly used potassium supplement alone.³

Burinex K in CCF
right from the start

1. Brit.Med.J., 618, 2, 1977
2. Actamed. scand., 119, 193, 1973
3. J.Int. Res., 104, 3, 1975

