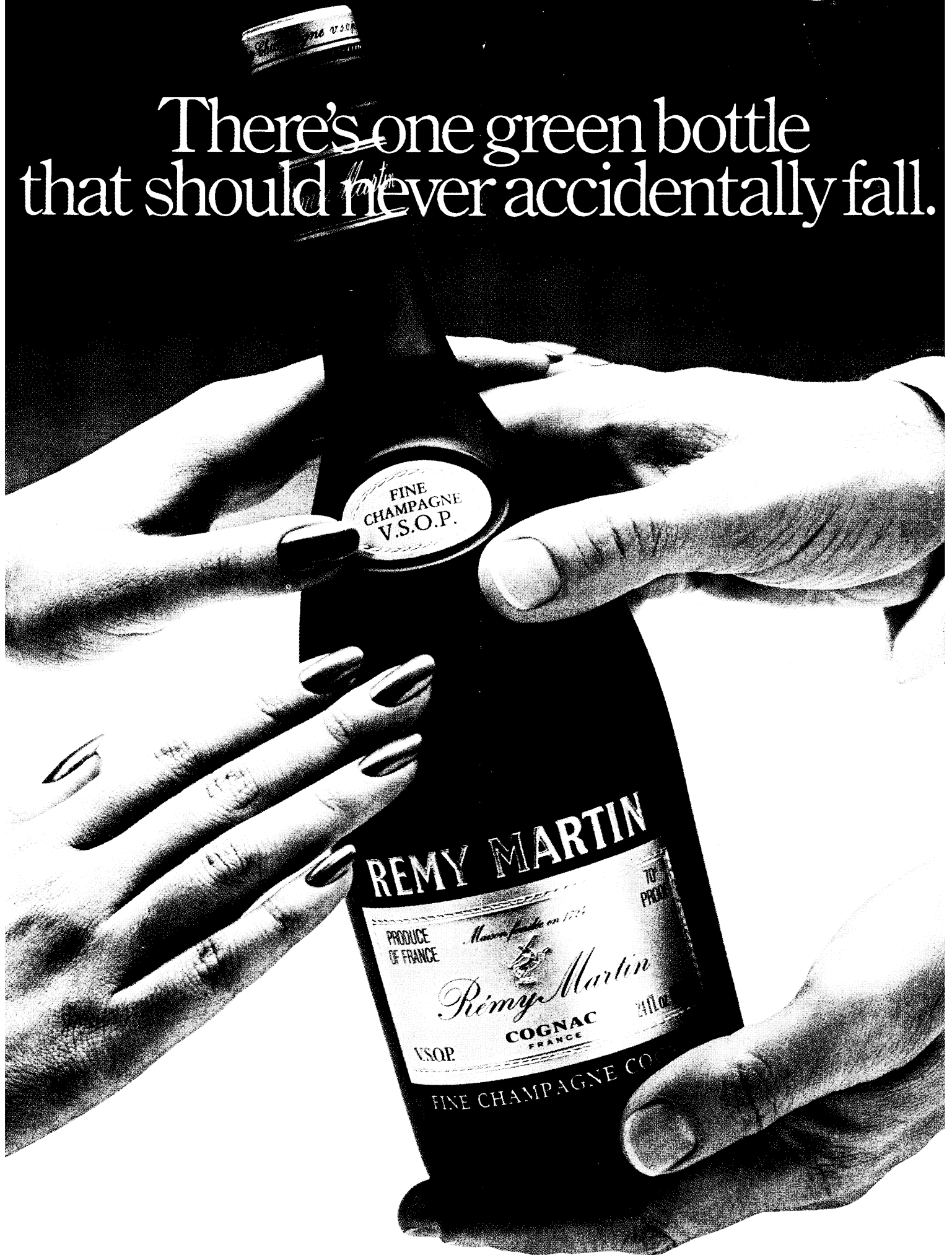


There's one green bottle
that should never accidentally fall.



Rémy Martin. Fine Champagne Cognac.

NEW EDITION**BIOCHEMICAL VALUES IN CLINICAL MEDICINE, 6th Edition**

R. D. EASTHAM, M.D. (CANTAB.), F.R.C.P.(LOND),
F.R.C.PATH., M.R.C.PSYCH., D.C.P., DIPL.PATH.

*Consultant Pathologist to the Frenchay Group of Hospitals,
Bristol.*

178 x 102 mm, 266 pages, paper covers.

U.K. net price £4.00

Recently Published

JOINT DISEASE: ALL THE ARTHROPATHIES, 3rd Edition

E. C. HUSKISSON, B.SC., M.B., M.R.C.P., and
F. DUDLEY HART, M.D., F.R.C.P.

240 x 146 mm, 192 pages, paper covers.

U.K. net price £5.00

A SYNOPSIS OF RHEUMATIC DISEASES, 3rd Edition

D. N. GOLDING, M.A., M.D., F.R.C.P.I., D.PHYS.MED.

184 x 121 mm, 290 pages, paper covers.

U.K. net price £6.00



JOHN WRIGHT
44 Triangle West Bristol BS8 1EX

TODAY'S TREATMENT/2

The first volume of *Today's Treatment* has proved a best-seller. Doctors clearly welcome its down-to-earth advice on the selection of effective remedies for common disorders. The second volume, just published covers endocrine and metabolic diseases, cardiovascular disorders, and the alimentary system. Again the chapters are based on articles first published in the *BMJ*; and the advice provides busy practitioners with a reliable working manual.

Demy Octavo

Paperback

216 pages

ISBN 0 7279 0025 0

**Price: Inland £4.00; Abroad US\$10.00
including postage**

Payment must be enclosed with order or a surcharge of 30p will be made for rendering invoices and statements.

ORDER FROM: The Publisher, BRITISH MEDICAL JOURNAL, B.M.A. House, Tavistock Square, London WC1H 9JR or through any leading bookseller



Wiley

DISPOSITION OF TOXIC DRUGS AND CHEMICALS IN MAN Vol. 1:**Centrally-Acting Drugs**

by R.C. Basalt, *Office of the Medical Examiner State of Connecticut and Dept. of Laboratory Medicine, University of Connecticut Health Center.*

The purpose of this two-volume work is to present in a convenient source the current essential information on the disposition of the chemicals and drugs most frequently encountered in cases of human poisoning. The data included relates to the body fluid concentrations of substances in normal or therapeutic situations, concentrations of substances in normal or therapeutic situations, concentrations in fluids and tissues in instances of toxicity and the known metabolic fate of these substances in man. Volume 1 is devoted to licit and illicit drugs affecting the central nervous system. For convenience the substances have been grouped primarily by pharmacologic class and secondarily by chemical structure.

Volume 2, in active preparation, will comprise peripherally acting drugs and common toxic chemicals.

September 1978

312 pages

0471 99716 1

\$29.00/£15.80

FLUIDS AND ELECTROLYTES WITH CLINICAL APPLICATIONS:**A Programmed Approach 2nd Ed.**

by Joyce LeFever Kee, *University of Delaware.*

The second edition of this programmed text expands on nursing interventions in relation to nursing assessment of fluid and electrolyte imbalances, drug effects on electrolytes, electrolyte replacements, and blood gas determinants. Each chapter has been carefully reviewed, expanded, and updated, and the newest terms are included. Nine new tables have been added, for a total of 65 tables and diagrams, each followed by frames that help participants gain a deeper understanding of the material.

July 1978

624 pages

0471 03678 1

(paper only) \$11.75/£6.50

PARANEOPLASIA: Biological Signals in the Diagnosis of Cancer

by J.G. Waldenstrom, *University of Lund, Sweden.*

This shows the diagnostic importance of numerous signs or symptoms as signals of malignancy. It discusses in detail the varying symptoms that may accompany malignancies, with actual examples of paraneoplastic phenomena that are truly reversible after radical treatment. Cancer biology and metabolic problems connected with the presence of tumors in the body are emphasised.

In Press

approx. 165 pages

0471 03490 8

approx. \$25.35/£14.05

SLEEP DISORDERS:**Diagnosis and Treatment**

edited by R.L. Williams and I. Karacan, both of *Taylor College of Medicine, Texas medical Centre, Houston.*

A fully detailed overview of sleep disorders and disordered sleep (insomnia), designed to provide the clinician with up-to-date information about these conditions for more effective diagnosis and management. This book incorporates latest advances in the objective measurements of patients with sleep disorders, and includes highlights of sleep research as they relate to new methods for evaluating these patients.

In Press

approx. 400 pages

0471 94682 6

approx. \$31.75/£17.65

John Wiley & Sons Limited

Baffins Lane · Chichester · Sussex · England

DISCOVERY—

In 1929, the pure crystalline digoxin was isolated from *digitalis lanata* by Wellcome research workers.

Digitalis lanata



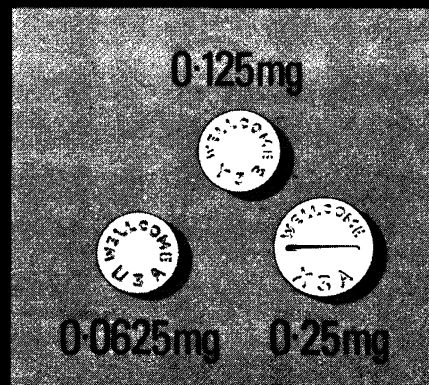
Wellcome production at Dartford, Kent

CONSISTENCY—

Tablet equivalence has been maintained by the highest standards of manufacture.

FLEXIBILITY—

The LANOXIN tablet range (plus the PG Elixir and Injection) offers greater flexibility of dosage.



LANOXIN

TRADE MARK

Wellcome research into practice

Full prescribing information about Lanoxin (digoxin) is available on request.
Wellcome Medical Division, The Wellcome Foundation Ltd., Berkhamsted, Herts



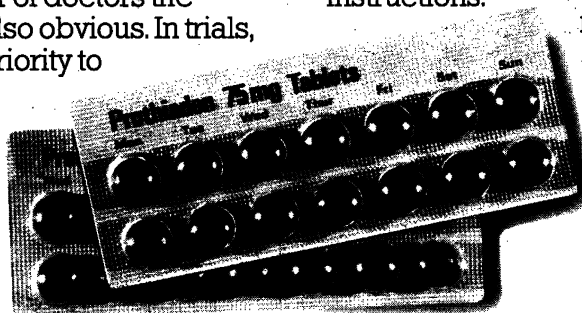
Wellcome



Prothiaden works beneath the disguises of depression

The disguises of depression and the patient's brave face may fool everyone but his doctor. To a growing number of doctors the benefits of Prothiaden are also obvious. In trials, Prothiaden has shown superiority to amitriptyline and with less side effects^{1, 2, 3} In a group of patients who are likely to be tired and

confused the new Calendar Pack gives your patients every assistance to comply with your instructions.



References:

1. Rees, J. A. & Cryer, P. C., *Curr. Med. Res. Opin.*, 1976, 4, 416.
2. Lambourn, J. & Rees, J. A., *J. Int. Med. Res.*, 1974, 2, 210.
3. Lipsedge, M. S., Linford Rees, W. & Pike, D. J., *Psychopharmacologia (Berl.)* 1971, 19, 153.

The Boots Company Ltd.,
Nottingham, England.



...With a new Calendar Pack to increase patient compliance

Prothiaden 75mg
a simple, evening dosage regimen
treats the underlying depressive illness

Tablets containing 75mg Dothiepin Hydrochloride B.P. Full prescribing information is available on request.

Caved-S®

heals peptic ulcers

EFFECTIVELY

AND

ECONOMICALLY

Full prescribing information on request from
TILLOTTS LABORATORIES, Henlow Trading Estate, Henlow, Beds.

ANNOUNCING "CARDIOREX"

A Truly Portable Single Channel Electrocardiograph

- * The product of the Latest Technology
- * High Efficiency * Safe and easy to Operate
- * Miniaturized Construction provides reduction in size and weight
- * Brochure and Leasing facilities available on request



Cardiacare Instruments (U.K.) Ltd.

**49 HALL ROAD, ROMFORD, ESSEX RM6 4LJ
TEL: 01-597 5099 TELEX: 24224 REF: 2901**

ADVERTISEMENTS PHARMACEUTICAL PRODUCTS

Readers are reminded that prescribers' literature and clinical information are always available from advertisers on request.

ST. ANDREW'S HOSPITAL NORTHAMPTON

PRIVATE PSYCHIATRIC CARE— A COMPREHENSIVE FACILITY

St Andrew's aims to provide the best in psychiatric care in a comfortable and relaxed environment. Staffed by nine full-time, Consultant Psychiatrists, three Clinical Psychologists and with a full complement of skilled nursing and rehabilitation staff, the hospital offers a broad range of psychiatric treatments. Care is provided on a short, medium and long-term basis and the following specific units are available:

Short-term acute treatment
Alcohol treatment
Behaviour modification
Day Hospital
Psychogeriatric
Psychotherapy
Brain damage and epilepsy investigation

Out-patient facilities are available at the hospital, at 148 and 152 Harley Street, London, W1, Oxford and Bedford

St Andrew's is an Independent Hospital and subscribers to the main Private Contributory Schemes may claim benefits within the terms of these schemes

Further details and brochures may be obtained from the Medical Director, St Andrew's Hospital, Northampton (Telephone 0604-21311)

BONE AND JOINT DISEASES

Arthritis used to be the Cinderella of diseases, but improved diagnostic techniques, advances in joint replacement surgery, and a whole range of non-steroidal drugs have led to a much more active approach to the management of the common bone and joint diseases. Detailed advice on their diagnosis and treatment was given last year in a series of 16 articles in the *BMJ*, and these have now been gathered together in the latest volume based on the popular "Today's Treatment" series.

Demy Octavo *Paperback* *131 pages*
ISBN 0 7279 0026 9

**Price: Inland £3.00; Abroad US \$7.50,
including postage**

Payment must be enclosed with order or a surcharge of 30p will be made for rendering invoices and statements

Order your copy now from

The Publisher, BRITISH MEDICAL JOURNAL,
BMA House, Tavistock Square, London WC1H 9JR
or through any leading bookseller

For a beast of a cough



ACTIFED COMPOUND LINCTUS

**The cough-stopper for
adults and children alike**

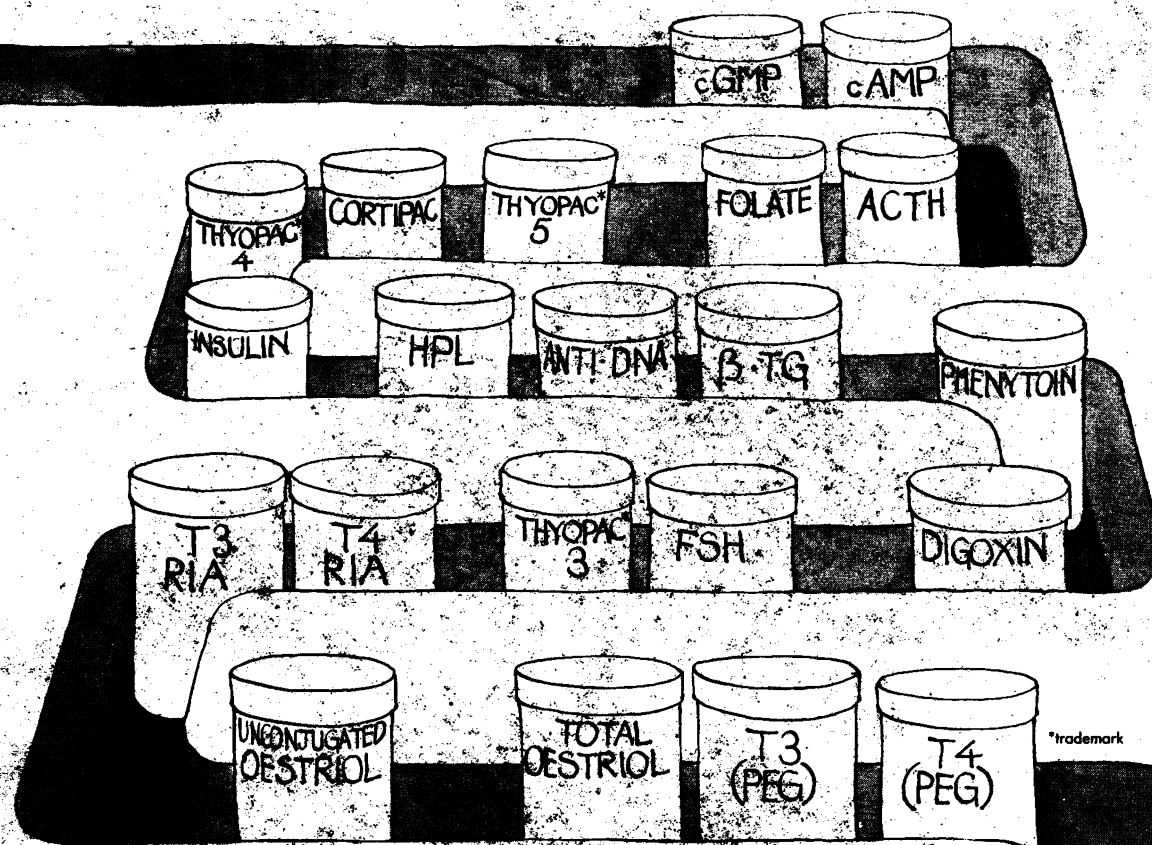
Actifed* Compound Linctus contains triprolidine hydrochloride, pseudoephedrine hydrochloride, and codeine phosphate in a palatable fruit-flavoured syrup.

*Trade Mark

Full prescribing information is available on request.
Wellcome Medical Division
The Wellcome Foundation Ltd.
Crewe, Cheshire



Wellcome



Four new radioassays you can count on

Our range of outstanding radioassay kits keeps growing, to provide you with the best techniques for research and diagnosis. Each of our new kits is reliable, convenient and simple to use, and maintains the same high standards of manufacture and quality control that you have come to expect.



AFP RIA kit for rapid screening of neural tube defects (NTD)

TSH RIA kit a fast and accurate assay for thyroid stimulating hormone.

Testosterone/Dihydrotestosterone RIA kit for the simple and rapid measurement of both androgens separately or together in research studies only.

B₁₂ Radioassay kit a sensitive and reliable assay for serum B₁₂.



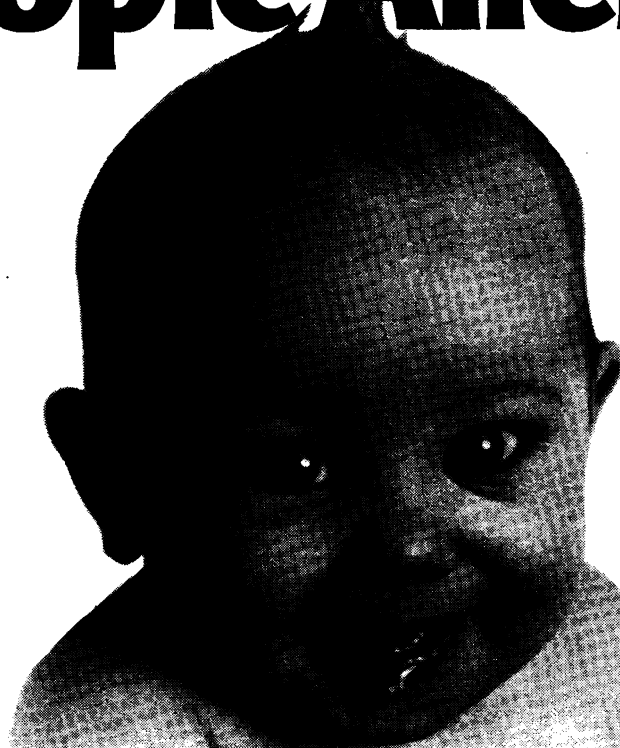
The sign of quality

**The Radiochemical Centre
Amersham**

Full information on all our radioassay kits is available on request.
The Radiochemical Centre Limited, Amersham, England. Telephone: 024-04-4444
In the Americas: Amersham Corporation, Illinois 60005. Telephone: 312-593-6800
In W. Germany: Amersham-Buchler GmbH & Co. KG, Braunschweig. Telephone: 05307-4691

1863

Atopic Allergy?



a hereditary predisposition?

"In children with a double parental history of atopic disease the incidence of such disease was higher than in children with a single such heredity in whom, however, the incidence was higher than in children without any parental history of atopic disease."

When history and examination are equivocal the use of IgE as a parameter for atopic allergy either for diagnostic or predictive purposes should be decisive.

Kjellman, N-I Max: Immunoglobulin E and Atopic Allergy in Children. Linköping University Medical Dissertations 36, 1976.

Phadebas IgE PRIST®

(Paper Radio Immuno Sorbent Test)

The test to predict atopic allergies in children.

Pharmacia Diagnostics AB
Uppsala · Sweden



Pharmacia
Diagnostics

Argentina Laboratorios Dr. Gador y Cia., S.A.C.I. Casilla de Correo 4041 1006 BUENOS AIRES. **Australia** Pharmacia (South Seas) Pty. Ltd. P.O. Box 175 4 Byfield Street NORTH RYDE N.S.W. 2113. **Austria** Pharmacia Gesellschaft m.b.H. Rathausplatz 4 A-1010 WIEN. **Belgium** N.V. Pharmacia Belga S.A. Bld. Gen. Jacqueslaan 26 B-1050 BRUSSELS. **Brazil** Empresa Medimex Importação e Comércio Ltda. Rua Cardoso Marinho, 40 Caixa Postal 33-ZC-00 RIO DE JANEIRO. **Canada** Pharmacia (Canada) Ltd. 2044 boul. St. Régis Blvd. DORVAL, Québec H9P 1H6. **Denmark** Pharmacia AS, Herredsvejen DK-3400 HILLERÖD. **Finland** Pharmacia OY Norrskensvägen 6, SF-02100 ESBO. **France** Pharmacia France S.A. Rue de Marly Parly 2 F-78150 LE CHESNAY. **German Federal Republic** Pharmacia G.m.b.H. Munzinger Strasse 9 Postfach 5480 D-7800 FREIBURG. **Great Britain** Pharmacia (G.B.) Ltd. Paramount House 75 Uxbridge Road LONDON W5 5SS. **Greece** G.A. Kambanis Imports-Exports-Representations 3 Iridanou Street ATHENS 612. **Italy** Importex Chimici Farmaceutici S.p.A. P.O. Box 467 Via Flavia 122/124 I-34100 TRIESTE. **Mexico** Internacional Cientifica S.A. Apartado Postal 2-807 Angel del Campo 17-A MEXICO 12 D.F. **The Netherlands** Gist-Brocades N.V. Diagnostics Dept. P.O. Box 324 Frijsdijkstraat 7-9 RIJSWIJK (ZH) 2109. **Norway** Norsk Pharmacia A/S Postboks 2005 Grünerløkka OSLO 5. **Portugal** J.A. Baptista D'Almeida Lda. Apartado 1339 LISBOA 1. **Spain** Atom, Paseo del Monte 34 BARCELONA 12. **Sweden** Pharmacia Norden AB Diagnostics Dept. Box 159 751 04 UPPSALA 1. **Switzerland** Pharmacia -pdf- (Schweiz) A.G. 214 Seefeldstrasse CH-8034 ZUERICH. **USA** Pharmacia Diagnostics Division of Pharmacia Inc. 800 Centennial Avenue PISCATAWAY New Jersey 08854. **Other countries** Pharmacia Diagnostics AB Box 17 S-751 03 UPPSALA 1 Sweden.

DON'T FORGET

As a fast acting diuretic
Burinex^{*} K
is unbeatable...

as a potassium
supplement it's
unforgettable

Your patients rarely forget to take their 'water pill' but all too frequently fail to take their potassium supplement if you prescribe it separately.¹ Burinex K solves this problem because Burinex the 'most effective natriuretic agent'² 'coats' the potassium core - to make it truly unforgettable. In addition - because of the shape and size - it's easier to swallow than the most commonly used potassium supplement alone.³

Burinex K in CCF
right from the start

1. Brit.Med.J., 618, 2, 1977
2. Actamed. scand., 119, 193, 1973
3. J.Int. Res., 104, 3, 1975



Burinex K is a fast acting diuretic. Usual doses may be 2 tablets 4 times daily. Contraindications: Hepatic coma and severe electrolyte disturbances. Burinex K should not be used with potassium sparing agents. Adverse reactions: Occasional skin rashes and minor gastric upset. Precautions: Burinex may potentiate antihypertensive therapy and may affect carbohydrate metabolism. Periodic electrolyte checks are advisable on long-term therapy. Burinex K should be stopped immediately if signs or symptoms of bowel ulceration appear.

*Burinex is a trade mark



Leo Laboratories Limited
Hayes Gate House, Hayes, Middx.