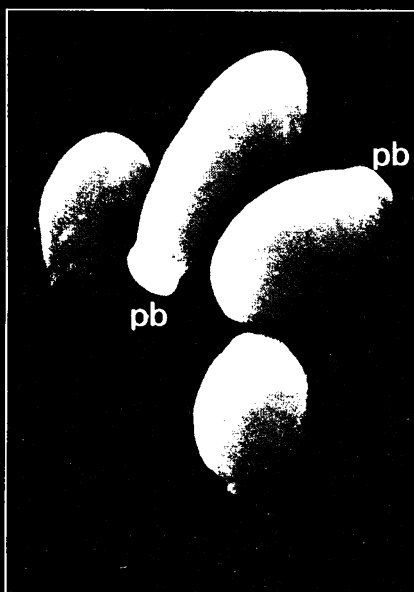
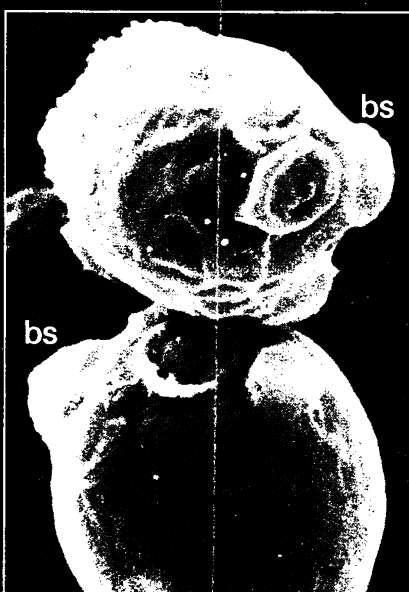


the fungicidal breakthrough

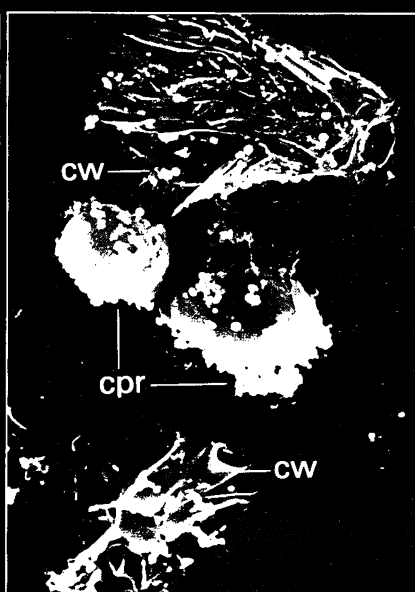
Scanning Electron Microscopic photographs of *Candida albicans* before and after treatment with miconazole.



1. Untreated cells appear as isolated yeast forms in an oval shape and with a smooth surface showing the formation of polar buds (pb).



2. Upon exposure to a fungistatic dose (10^{-7} M) of miconazole the cells tend to cluster. Budding becomes disorganized with visible budding scars (bs) that are randomly distributed over the surface of the cells.



3. Treatment with a fungicidal dose of miconazole causes the cell wall (cw) to burst. Vesicles of cytoplasm disintegrate and adhere to the surface of yet unbroken cells (cpr). (The interior of the cells is completely lytic).



the standard fungicidal treatment

Daktarin

miconazole nitrate 2 % w/w

*highly effective
in all fungal infections*

further information available on request from :



Janssen Pharmaceutica
2340 Beerse, Belgium.

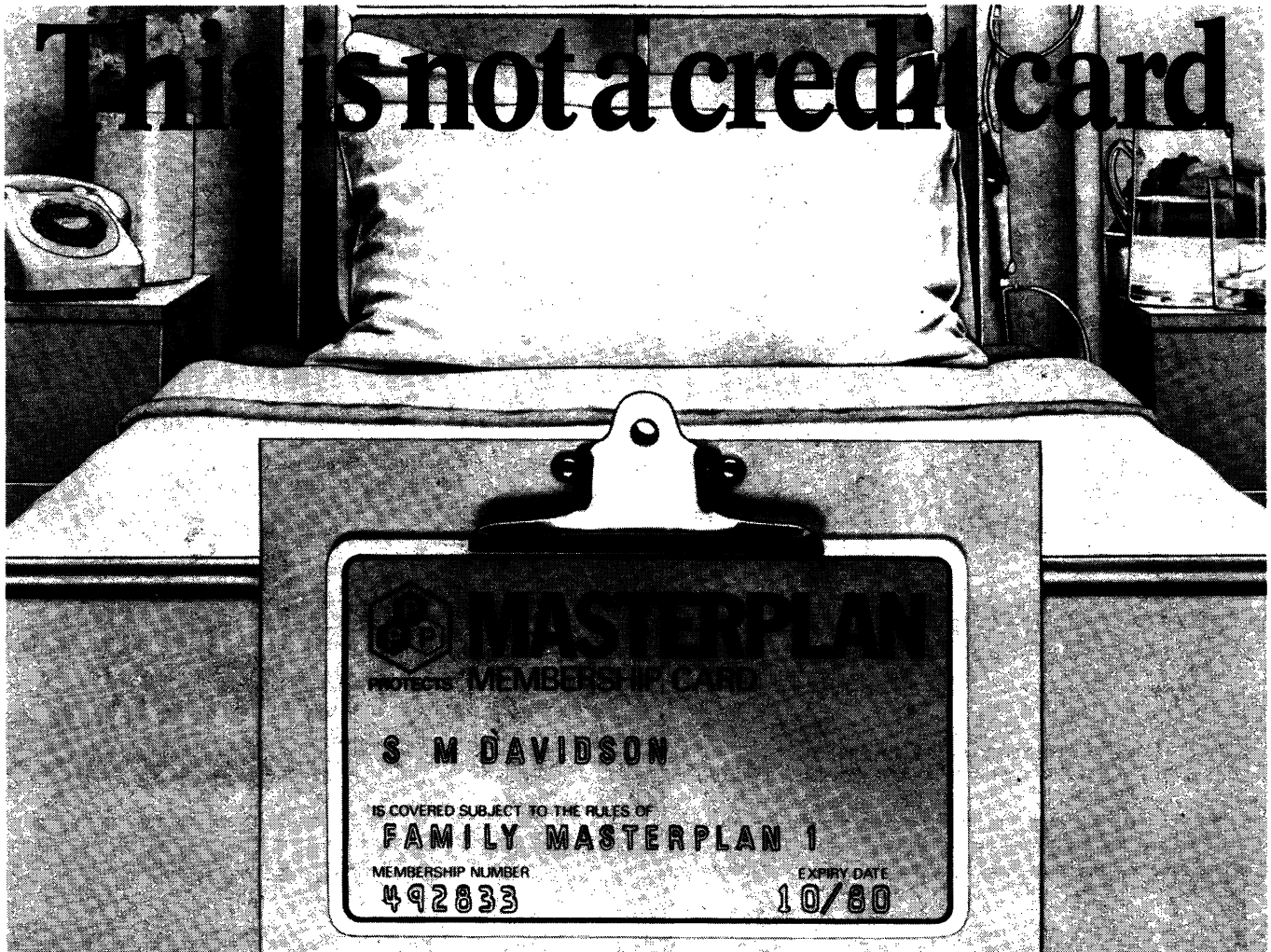
or from :
Janssen Pharmaceutical Ltd.
Janssen House, Marlow, Bucks.
PL/0242/0016, 17, 47, 48, 52

Trade Marks : Brentan in Denmark and Spain, Daktar in Germany, Daktarin in all other countries.

WHY NOT SUBSCRIBE TO THE SPECIALIST JOURNALS PUBLISHED BY THE BMA:—A SELECTION INCLUDES

Archives of Disease in Childhood, British Heart Journal, British Journal of Ophthalmology, Gut, Journal of Clinical Pathology & Journal of Neurology, Neurosurgery & Psychiatry.

FULL DETAILS OF SUBSCRIPTION RATES FROM BMA SPECIALIST PUBLICATIONS: BMA HOUSE, TAVISTOCK SQUARE, LONDON WC1H 9JR
TELEPHONE 01-387 4499 EXT. 309.



It's health insurance made simple

We believe that PPP's Masterplan is the most comprehensive health insurance you can find. Now with the introduction of the unique Masterplan membership card, it's also the simplest. Here are the facts:

1 What the card means. The card will identify you as a member of Masterplan. It is not a credit card but it will allow you to ask for direct payment by PPP of your bills for hospital bed charges. Current charges for a hospital bed can be over £100 per day. You may not realise that most hospitals want to be paid in full when you are discharged. This could certainly put a strain on your family budget leaving you well out of pocket until reimbursed by your insurance company. Now these money problems can be passed to PPP.

2 How the card works. Arrangements have been made with many hospitals (those participating are high-lighted in our private beds directory) so that subscribers' bills can be settled directly by PPP. There is a minimum of formality, you simply show your Masterplan card on arrival at the hospital.

3 What Masterplan covers. The Masterplan policies offer you a choice of cover for all necessary medical expenditure, including the hospital bed charges and specialists' fees. You choose the right policy for your requirements according to where you live

and work. When you get our brochure, you will see that you can claim up to £20,000 in a year.

4 How much does it cost? Take a couple in their thirties with two children who choose PPP's Family Masterplan One. Each person covered has a maximum benefit entitlement of £20,000 each year for as little as £20 per month for the whole family.

5 Where does the money go? PPP is a non-profit making organisation. All of our income is used for the benefit of our subscribers. That's the whole point of our business. We also support the development of private hospitals, including Nuffield Hospitals, to help make sure that a bed is available when you need it.

6 Masterplan - the right choice. Masterplan has been devised by Private Patients Plan based on 40 years experience of providing health insurance. We believe we're the best. No other company offers such a wide range of benefits as Masterplan at such low premiums with the added simplicity of the Masterplan card.

So make sure you choose Masterplan for your health insurance, write now for details stating whether for individual, family or company to: Private Patients Plan, Dept. BJ1, FREEPOST, Tunbridge Wells, Kent TN1 2YZ or telephone 0892 42211.

No one will visit you unless you ask.



Masterplan. Quality and simplicity in private health care

TAKE IT EASY.....

**....Good advice
at a time like this**

INOLAXINE

98% Sterculia - sugar free

**Aids regular habits in expectant
and nursing mothers**



Prescribing Information:

Indications: simple constipation associated with pregnancy **Side effects:** occasional flatulence and discomfort

Dosage: 1-2 heaped teaspoonfuls once or twice daily **Basic NHS cost £1.40 per 175g**

Full product information available on request



Dales Pharmaceuticals Limited
Barrows Lane, Steeton, Keighley, Yorkshire BD20 6PP
(Steeton 53222)

PL 012/V0009

Alcohol Treatment Unit

This private unit has been established in the grounds of Ticehurst House to provide comprehensive and enlightened treatment for those with drinking problems. Treatment is structured to individual needs and is undertaken by doctors, nurses and therapists with wide experience in this specialty.

Subscribers to the main Private Contributory Schemes may claim benefits within the terms of these schemes.

Further information is available from the Medical Director,

The Newington Unit

Ticehurst House, Ticehurst, Wadhurst, Sussex.
Telephone: Ticehurst (0580) 200391.



**JUST
PUBLISHED**

A Colour Atlas of Pathogenic Fungi

Dorothea Frey, DSc

Chief Mycologist and Curator, National Reference Laboratory in Medical Mycology, Royal North Shore Hospital of Sydney

Ronald Jowett Oldfield, BSc

Senior Lecturer in Biology, Macquarie University, Sydney

Ronald C. Bridger, BSc, MASM

Microbiologist, Godfrey Pathology Laboratory, Christchurch

415 stunning full-colour photographs illustrate all fungi known to be pathogenic to man in this comprehensive visual and textual guide to the identification of pathogenic fungi.

415 full colour photographs

168 pages, size 10 1/4 in × 7 5/8 in, casebound
On sale through good booksellers - price £16 - or, in case of difficulty, from

Wolfe Medical Publications

Wolfe House 3 Conway Street London W1P 6HE

THE RETREAT, YORK for Psychiatric Illnesses

Founded in 1792 by the Quaker, William Tuke, who established the tradition of concern for patients as individuals, The Retreat is a 250-bedded private registered nursing home surrounded by extensive grounds on the outskirts of the historic City of York. It is easily reached by rail and motorways.

Care and treatment is offered for most types of psychiatric illness on the short or long term in a sympathetic and friendly atmosphere. Patients suffering from neuroses, psychoses, alcoholism and dementia are treated in surroundings suitable for their individual needs.

The Nursing Home is a registered charity and is able to offer inclusive care in shared accommodation from £17.50 per day or in single rooms at slightly increased charge. The Nursing Home is recognised by the main private patient schemes.

For further details apply to The Medical Director, The Retreat, York. YO1 5BN (Tel. 0904- 412551)

ADVERTISEMENTS

PHARMACEUTICAL PRODUCTS

Readers are reminded that prescribers' literature and clinical information are always available from advertisers on request.

Vallergan in chicken pox

Fast relief from itching and irritation

Unobtrusive – no messy, topical lotions

Calms, soothes... and restores sleep

Trusted and gentle – with few (if any) side-effects

Nice-tasting, apricot flavour

Vallergan Syrup

TRIMEPAZINE TARTRATE

For titches with itches and tots with spots.

Further information in data sheet
'Vallergan' is a trade mark of May & Baker Ltd
May & Baker Ltd Dagenham Essex RM10 7XS



M&B May & Baker



A member of the Rhône-Poulenc Group of Companies



Dosage (children): 7.5mg 3/4 times daily. Contra-indications: coma due to central nervous depressants. Side effects: initial drowsiness, rare disturbed dreams, dry mouth, nasal stuffiness, headache, abdominal discomfort, skin rashes. Very rare agranulocytosis. Presentation/cost: PL0012/5019 syrup, 125ml bottle, 39p. Jan. 1979.

As a fast acting diuretic
Burinex^{*} K
bumetanide and slow-release potassium chloride
is unbeatable...

as a potassium
supplement it's
unforgettable

Your patients rarely forget to take their 'water pill' but all too frequently fail to take their potassium supplement if you prescribe it separately.¹ Burinex K solves this problem because Burinex the 'most effective natriuretic agent'² 'coats' the potassium core - to make it truly unforgettable. In addition - because of the shape and size - it's easier to swallow than the most commonly used potassium supplement alone.³

Burinex K in CCF
right from the start

1. Brit. Med. J., 618, 2, 1977
2. Acta med. scand., 119, 193, 1973
3. J. Int. Res., 104, 3, 1975



Burinex (bumetanide) is a potent short-acting diuretic indicated in the treatment of oedema. Burinex is available as Burinex Injection (4 ml and 25 ml ampoules; each ml contains 0.25 mg bumetanide) and Burinex K (0.5 mg bumetanide and 7.7 mmol slow release KCl).
Dosage: oral and parenteral normally 1 mg. Higher doses may be used in resistant oedema, for long-term maintenance therapy of CCF, Burinex K is usually given as 2 tablets O.M. **Contra-indications:** Hepatic coma and severe electrolyte disturbances. Burinex K should not be used with potassium sparing agents. **Adverse reactions:** Occasional skin rashes and minor gastric upset. **Precautions:** Burinex may potentiate antihypertensive therapy and rarely, may affect carbohydrate metabolism. Periodic electrolyte checks are advisable on long-term therapy. Burinex K should be stopped immediately if signs or symptoms of bowel ulceration appear. Product Licence No: 0043/0027B

*Burinex is a trade mark
Full prescribing information available on request



Leo Laboratories Limited
Hayes Gate House, Hayes, Middx.