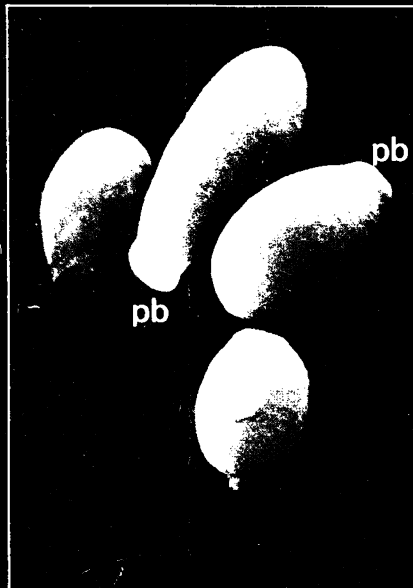
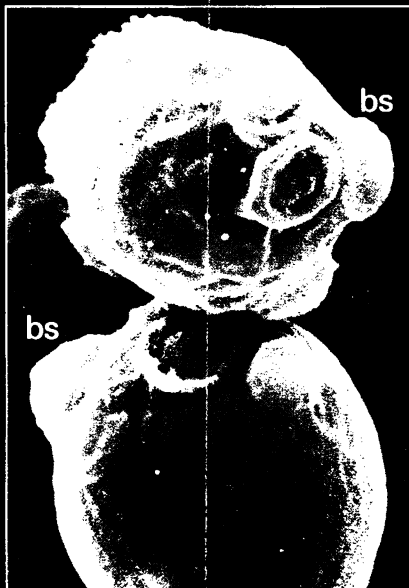


# the fungicidal breakthrough

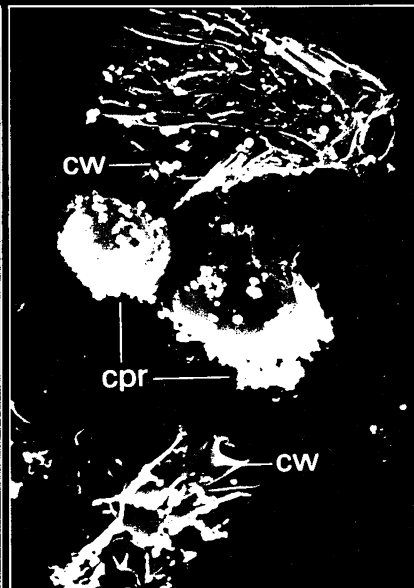
Scanning Electron Microscopic photographs of *Candida albicans* before and after treatment with miconazole.



1. Untreated cells appear as isolated yeast forms in an oval shape and with a smooth surface showing the formation of polar buds (pb).



2. Upon exposure to a fungistatic dose ( $10^{-7}$  M) of miconazole the cells tend to cluster. Budding becomes disorganized with visible budding scars (bs) that are randomly distributed over the surface of the cells.



3. Treatment with a fungicidal dose of miconazole causes the cell wall (cw) to burst. Vesicles of cytoplasm disintegrate and adhere to the surface of yet unbroken cells (cpr). (The interior of the cells is completely lytic).



*the standard fungicidal treatment*

## Daktarin

miconazole nitrate 2 % w/w

*highly effective  
in all fungal infections*

further information available on request from:



**Janssen Pharmaceutica**  
2340 Beerse, Belgium.

or from:  
Janssen Pharmaceutical Ltd.  
Janssen House, Marlow, Bucks.  
PL/0242/0016, 17, 47, 48, 52

Trade Marks: Brentan in Denmark and Spain, Doktor in Germany, Daktarin in all other countries.

### WHY NOT SUBSCRIBE TO THE SPECIALIST JOURNALS PUBLISHED BY THE BMA:—A SELECTION INCLUDES

Archives of Disease in Childhood, British Heart Journal, British Journal of Ophthalmology, Gut, Journal of Clinical Pathology & Journal of Neurology, Neurosurgery & Psychiatry.

FULL DETAILS OF SUBSCRIPTION RATES FROM BMA SPECIALIST PUBLICATIONS: BMA HOUSE, TAVISTOCK SQUARE, LONDON WC1H 9JR  
TELEPHONE 01-387 4499 EXT. 309.

# British Council Medical Courses

*for specialists living outside Britain*

## **CARDIOVASCULAR AND RESPIRATORY CLINICAL MEASUREMENT**

**16-28 March 1980 in London and Bristol**

The course will be under the direction of Dr P Cliffe, Director of the Department of Clinical Measurement, Westminster Hospital assisted by Dr J P Blackburn, Consultant in the same department. This course is designed to show how modern methods of measurement in medicine are contributing to the improvement of diagnosis and treatment. The course will be related to those branches of the basic sciences which make such measurements possible and will include aspects of the physiology and pathology of systems under discussion. The course is intended for qualified anaesthetists, cardiologists and intensive care clinicians who have more than five years' experience.

Fee including demi-pension accommodation £490.

Please apply by 15 November 1979.

## **RECENT ADVANCES IN RENAL MEDICINE**

**13-25 April 1980 in Newcastle and London**

The Directors of Studies will be Professor D N S Kerr, Professor of Medicine, University of Newcastle upon Tyne, and Dr R Wilkinson, Senior Lecturer in Medicine, University of Newcastle upon Tyne. The working sessions will take place mainly at the Royal Victoria Infirmary, Newcastle upon Tyne and the Royal Society of Medicine, London. The programme is designed to cover all aspects of nephrology. It will consist of lectures by specialists in each field, short sessions for the presentation of original work by participants and by members of the host departments, and a daily clinico-pathological conference. This course is designed primarily for young physicians with one or two years experience in renal medicine. In British terms this will mean that the course members will be senior registrars or junior consultants.

There are vacancies for 50 members.

Fee including demi-pension accommodation £420.

Please apply by 1 December 1979.

## **MALIGNANT DISEASE IN CHILDHOOD**

**11-23 May 1980 in London, Manchester and Oxford**

The Director of Studies will be Professor R M Hardisty, Professor of Haematology at the Institute of Child Health. In Oxford, the programme will be organised by Dr G J Draper, Director, Childhood Cancer Research Group, and in Manchester by Dr Patricia Morris Jones, Senior Lecturer in Child Health, University of Manchester.

This course in paediatric oncology will be chiefly devoted to recent advances in the subject, including theoretical, experimental and epidemiological aspects, as well as up-to-date information on diagnosis and treatment and the organisation of clinical services. The course is intended for experienced paediatric oncologists and general paediatricians with special interest and experience in malignant disease.

Fee including demi-pension accommodation in London and fully inclusive in Manchester and Oxford £590.

Please apply by 31 December 1979.

## **ORGANISATION OF TRAINING AND RESEARCH IN ANAESTHESIA**

**11-23 May 1980 in Cardiff, Sheffield and London**

Professor M K Sykes of the Department of Anaesthesia, Royal Postgraduate Medical School, Hammersmith Hospital, London will direct this course. The aim of the course is to introduce course members to British anaesthetists who are endeavouring to improve standards by participating in organisation, teaching or research, and to demonstrate what is being achieved with the available facilities. The course is designed to illustrate the role of the university departments and the various national bodies in the development of anaesthesia within the United Kingdom. This course is intended for Professors, Heads of Departments and others with continuing interest in teaching or research in anaesthesia.

Fee including demi-pension accommodation in London and fully inclusive in Cardiff and Sheffield £560.

Please apply by 15 January 1980.

## **HEALTH FACILITY PLANNING HOSPITAL AND CLINIC DESIGN AND FUNCTION**

**15-27 June 1980 in London and Harrogate**

The Director of Studies will be Dr Raymond Moss, Reader in Architecture and Director of the Medical Architecture Research Unit at the Polytechnic of North London. The aim of the course is to examine and debate the progress of the last five years in Britain first by matching facility provision to the requirements of a health service plan, and secondly by assessing the potential for blending existing and projected buildings into an economical health care delivery system. The course will spend the first week in London and the second in Harrogate.

The course has been planned to appeal to both policy makers and professional consultants involved in the provision of health care facilities at national or local level. It is expected that course members will have had a number of years' experience in health facility planning in an integrated system such as that in Britain and be in sympathy with the multi-professional approach.

There are vacancies for 40 members.

Fee £555 including demi-pension accommodation.

Please apply by 1 February 1980.

## **THROMBOEMBOLIC DISEASE**

**29 June-11 July 1980 in London**

The Director of Studies will be Professor V V Kakkar, Thrombosis Research Unit, King's College Hospital Medical School, London. The morbidity and mortality of coronary heart disease, cerebrovascular accidents, transient ischaemic attacks and deep vein thrombosis are of wide concern; most clinicians are called upon to deal with the consequences of such acute occlusive vascular insults from time to time. The course is designed to present a balanced review of present concepts in the pathogenesis, detection, prevention and treatment in both venous and arterial thrombosis. The platelet's role in haemostasis and thrombosis, the biochemical events underlying normal platelet physiology and current views on the clinical efficacy of platelet-suppressant drugs will be discussed. It is intended to review in detail the value of non-invasive diagnostic techniques in vascular disease. Practical demonstrations will include Doppler ultra-sonic techniques, volume plethysmography and isotope measurements. The current status of several haematological tests designed to investigate the pre-thrombotic state will be presented. Recent advances in the chemistry, mode of action and management of heparin and thrombolytic therapy will also be discussed. The course is intended for senior clinicians actively involved in the management of patients suffering from thromboembolic disease. It is essential that course members should have a good command of spoken English and that they should be prepared to contribute actively to the discussions.

There are vacancies for 35 members.

Fee including demi-pension accommodation £540.

Please apply by 15 February 1980.

## **PSYCHOGERIATRICS—THE CLINICAL AND ORGANISATIONAL PSYCHIATRY OF THE ELDERLY**

**13-25 July 1980 in Nottingham**

The course will be held in the University of Nottingham. It will be directed by Professor T H D Arie who is Head of Nottingham University Department of Health Care of the Elderly (a joint department of psychiatrists, physicians and others concerned with the elderly). The course aims to review current practice in the clinical psychiatry of old age; recent clinical, laboratory and sociological developments; measurements of need, organisation of services and their evaluation. Emphasis will be given also to problem of institutional care; to the relationship between psychiatric and other medical and social services for old people; and to educational issues in this field. The course is designed primarily for psychiatrists, but doctors and members of other health professions with the requisite background would be welcome.

There are vacancies for 20 members.

Fee including full pension accommodation £560.

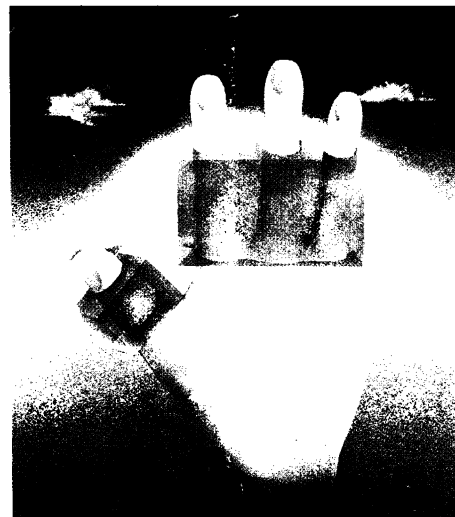
Please apply by 1 March 1980.

Further information and application forms are available from local overseas Representatives of the British Council or from the Director, Courses Department, The British Council, 65 Davies Street, London W1Y 2AA, Britain.

# New light on an old problem

## The clinical significance of prostaglandins

Prostaglandins are synthesised in arthritic joints; they augment pain and inflammation. Nonsteroidal anti-inflammatory drugs reduce pain and inflammation mainly by inhibiting prostaglandin synthesis. The level of this antiprostaglandin activity exhibited by a drug correlates with its analgesic and anti-inflammatory activity.



## The clinical application of a potent antiprostaglandin

Since antiprostaglandin activity indicates effectiveness in reducing pain and inflammation, a potent antiprostaglandin must be considered as first-line treatment for arthritis.

Froben is a potent antiprostaglandin—one of the most potent of the available anti-inflammatory drugs.

## The clinical importance of Froben potent antiprostaglandin

Through its potent antiprostaglandin action, Froben provides the powerful analgesic and anti-inflammatory activity needed to relieve the pain, stiffness and swelling of rheumatoid arthritis and osteoarthritis and so progressively improve the mobility of your arthritic patient.

# Froben

**flurbiprofen**  
potent antiprostaglandin  
potent anti-arthritic

### PRESCRIBING INFORMATION

**Presentation:** Sugar-coated tablets, each containing either 50 or 100 mg of flurbiprofen.

**Uses:** Froben is indicated in the treatment of rheumatoid disease, osteoarthritis and ankylosing spondylitis.

**Dosage:** 150 to 200 mg daily in 3 or 4 divided doses. In patients with severe symptoms or disease of recent origin, or during acute exacerbations, the total daily dose may be increased to 300 mg in divided doses.

**Contra-indications, Warnings, etc:** Froben should not be given to patients with peptic ulceration. Care should be taken when administering the drug to patients with asthma or who have experienced bronchospasm with other anti-inflammatory or analgesic agents. The safety of Froben during pregnancy or lactation has not been established. In animal experiments, no teratogenic effects were demonstrated but parturition was delayed and prolonged. Side-effects: Dyspepsia, heartburn and headache are the commonest encountered. Occasional skin rashes have been reported. Treatment of Overdosage: Gastric lavage and, if necessary, correction of serum electrolytes. There is no specific antidote.

**Basic NHS Price:** 50 mg tablets, 100 £8.24; 100 mg tablets, 100 £15.65.

**Product Licence No:** 50 mg tablets, PL0014/0167; 100 mg tablets, PL0014/0168.