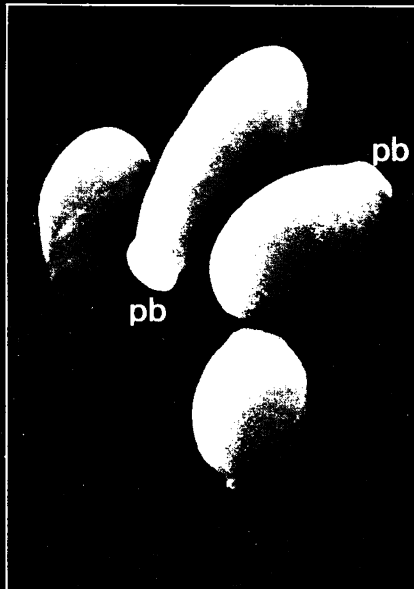
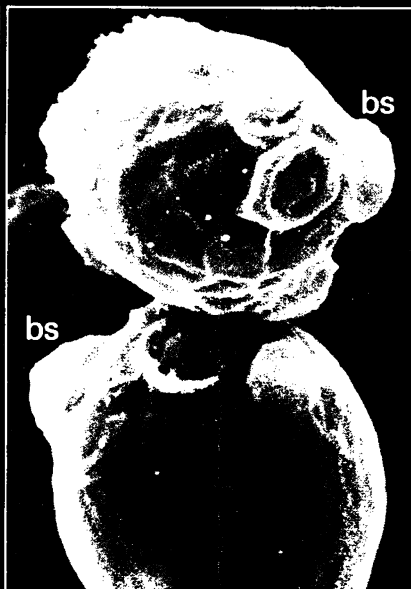


the fungicidal breakthrough

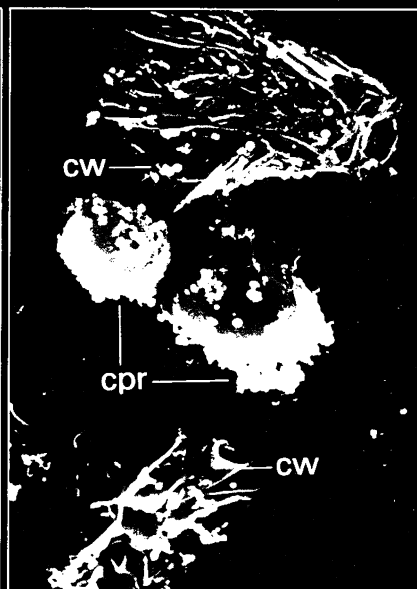
Scanning Electron Microscopic photographs of *Candida albicans* before and after treatment with miconazole.



1. Untreated cells appear as isolated yeast forms in an oval shape and with a smooth surface showing the formation of polar buds (pb).



2. Upon exposure to a fungistatic dose (10^{-7} M) of miconazole the cells tend to cluster. Budding becomes disorganized with visible budding scars (bs) that are randomly distributed over the surface of the cells.



3. Treatment with a fungicidal dose of miconazole causes the cell wall (cw) to burst. Vesicles of cytoplasm disintegrate and adhere to the surface of yet unbroken cells (cpr). (The interior of the cells is completely lytic).



the standard fungicidal treatment

Daktarin

miconazole nitrate 2 % w/w

*highly effective
in all fungal infections*

further information available on request from:



Janssen Pharmaceutica
2340 Beerse, Belgium.

or from:
Janssen Pharmaceutical Ltd.
Janssen House, Marlow, Bucks.
PL/0242/0016, 17, 47, 48, 52

Trade Marks: Brentan in Denmark and Spain, Doktor in Germany, Daktarin in all other countries.

WHY NOT SUBSCRIBE TO THE SPECIALIST JOURNALS PUBLISHED BY THE BMA:—A SELECTION INCLUDES

Archives of Disease in Childhood, British Heart Journal, British Journal of Ophthalmology, Gut, Journal of Clinical Pathology & Journal of Neurology, Neurosurgery & Psychiatry.

FULL DETAILS OF SUBSCRIPTION RATES FROM BMA SPECIALIST PUBLICATIONS: BMA HOUSE, TAVISTOCK SQUARE, LONDON WC1H 9JR
TELEPHONE 01-387 4499 EXT. 309.

Once again you can know a little more about nuclear disarmament and your navel.

The Times is back.

**And, once again, you can enjoy that unique
forum for public debate – The Times Letters Page.**

**On one day you may find a letter advocating the
need for world nuclear armament; another of
course praying and beseeching for the complete
reverse.**

**You could find a letter mourning the sad demise
of the button-hole and the apparent collapse of
any standards at all in Savile Row.**

**Or you could read a letter advising you on the
best part of your anatomy (your navel) in which
to secrete the salt while eating celery in bed.**

**Information and entertainment you can't afford
to miss.**

In the Times Letters Page.



THE TIMES
Back, to keep you better informed.

Important notice for all medical and emergency personnel



There are now around 500,000 people in the UK wearing an SOS Talisman.

All items may be recognised by the SOS symbol on the screw cap, although they may have Zodiac symbols, St. Christopher etc. embossed on the back.

SOS Talisman is worn as a pendant, bracelet or attachment on a watch strap. When the heat and water resistant capsule is unscrewed it reveals an information strip — as illustrated above. This records the wearer's identity, next of kin, and personal details — as well as medical data which may be of assistance to you in the treatment of a patient.

There may also be a declaration that the wearer wishes to be an organ donor.

**LOOK FOR THE
SOS TALISMAN
IT COULD GIVE
YOU VITAL
INFORMATION**



SOS Talisman Pendant



SOS Talisman Bracelet



SOS Talisman Watch Attachment

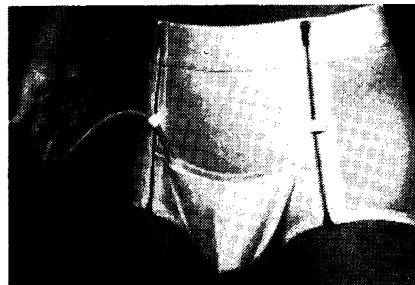
Leaflets and information posters are available from:
S.O.S. Talisman Co. Limited,
212-220 Regents Park Road, Finchley, London N3 3HP.
Telephone: 01-346 7234.



SOS Talisman
IS RECOMMENDED BY ST. JOHN AMBULANCE



Spencer Male Incontinence Device



A unique new approach to the problem of male incontinence overcomes the recognised disadvantages of conventional collectors and absorbent pads.

This device can be used on patients confined to bed or a wheelchair as well as those who are fully ambulant. It can be considered for patients who are incontinent due to multiple sclerosis, spinal injury, post prostatic surgery and many other causes. Send for information leaflet.

- No pads
- No collectors
- Simple and convenient

Spencer (Banbury) Ltd
Spencer Surgical Supplies
Spencer House,
Britannia Road, Banbury,
Oxfordshire OX16 8DP
Telephone 0295 57301

A member of the InterMed group

Private Psychiatric Care

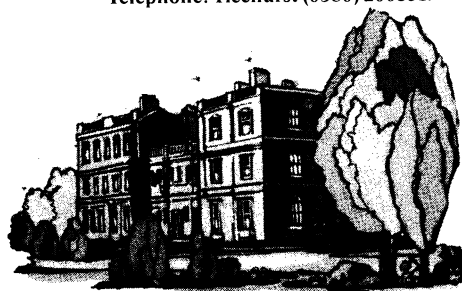
A highly trained team of doctors, nurses and therapists offer treatment for a wide range of psychiatric illnesses at Ticehurst House, including a special unit for the treatment of Alcoholism. The team includes general psychiatrists, a consultant with a specialist interest in drinking problems, a consultant physician, educational and occupational therapists. Consultants are also welcome to treat their own patients by arrangements with the Medical Staff.

Subscribers to the main Private Contributory Schemes may claim benefits within the terms of these schemes.

Further information is available from the Matron.

Ticehurst House

Ticehurst, Wadhurst, Sussex.
Telephone: Ticehurst (0580) 200391.





Keflex cares for the family chest.

cephalexin BP

Keflex combines real penetration¹ with excellent tolerance² and simplified dosage recommendations. That makes Keflex a convenient routine for all the family – from children's throat infections to bronchitis in the elderly.²

Presentation

Tablets containing 500mg cephalexin BP-6/5096. PA 47/8/5.
Tablets containing 250mg cephalexin BP-6/0073. Capsules containing 500mg cephalexin BP-6/0076. Capsules containing 250mg cephalexin BP-6/5103. PA 47/8/6. Suspension containing 125mg cephalexin BP per 5ml-6/5097. PA 47/8/3.
Suspension containing 250mg cephalexin BP per 5ml-6/5098. PA 47/8/4.

Uses

'KEFLEX' is indicated in the treatment of respiratory tract infections due to susceptible micro-organisms.

Dosage and Administration
'KEFLEX' is administered orally.

Adults: The adult dosage ranges from 1-4g daily in divided doses. For streptococcal pharyngitis the usual dosage is 250mg every 6 hours, or 500mg every 12 hours.

Children: The usual recommended daily dosage for children is 25-50mg/kg (10-20mg/lb) in divided doses. For streptococcal pharyngitis the total daily dose may be divided and administered every 12 hours.

Contra-indication

Allergy to the cephalosporins.

Warnings

'KEFLEX' should be given cautiously to patients who have shown hypersensitivity to other drugs. In penicillin-sensitive patients cephalosporins should be given with caution. The safety of cephalexin

for use during pregnancy has not been established.

Precautions

If allergic reactions occur discontinue the drug. Prolonged use of 'KEFLEX' may result in the overgrowth of non-susceptible organisms. Evaluation of renal status is recommended as lower dosage may be required in patients with impaired renal function. A false positive reaction for glucose in the urine may occur with Benedict's or Fehling's solutions or with copper sulphate test tablets, but not with Tes-Tape[®] (urine sugar analysis paper, Lilly).

Side-effects

Gastro-intestinal disturbances (diarrhoea, nausea, vomiting, dyspepsia, abdominal pain); allergies

(rash, urticaria, angio-oedema); anaphylaxis; genital and anal pruritus, genital moniliasis; eosinophilia, neutropenia, slight transient elevations in AST (SGOT) and ALT (SGPT); positive direct Coombs' tests.

Legal Category

POM

Price

Suspensions.	125mg/5ml	£1.17
	250mg/5ml	£2.30
250mg Tablets.	20 ex 500 pack	£2.17
500mg Capsules.	20 ex 500 pack	£4.25

References

1. Medical Clinics of North America, 1970, 54, 1229.
2. Data on file, Lilly Research Laboratories.

Lilly
Keflex
cephalexin BP

Arthritis

When a nonsteroidal
anti-inflammatory agent
is indicated...

...a potent
antiprostaglandin
must be considered
as first line treatment

Prescribing Information

Presentation: Sugar-coated tablets, each containing either 50mg or 100mg of flurbiprofen.

Uses: Froben is indicated in the treatment of rheumatoid disease, osteoarthritis and ankylosing spondylitis.

Dosage: 150mg to 200mg daily in 3 or 4 divided doses. In patients with severe symptoms or disease of recent origin, or during acute exacerbations, the total daily dose may be increased to 300mg in divided doses.

Contra-indications, Warnings etc: Froben should not be given to patients with peptic ulceration. Care should be taken when administering the drug to patients with asthma or who have experienced bronchospasm with other anti-inflammatory or analgesic agents.

The safety of Froben during pregnancy or lactation has not been established. In animal experiments, no teratogenic effects were demonstrated but parturition was delayed and prolonged. Side-effects: dyspepsia, heartburn and headache are the commonest encountered. Occasional skin rashes have been reported. Treatment of overdosage: gastric lavage and, if necessary, correction of serum electrolytes. There is no specific antidote.

Basic NHS Price: 50mg tablets, 100 £8.24, 100mg tablets, 100 £15.65.

Product Licence No: 50mg tablets, PL0014/0167, 100mg tablets, PL0014/0168.

Froben

flurbiprofen

potent antiprostaglandin
potent anti-arthritic



Further information is available on request from

The Boots Company Ltd., Nottingham, England.