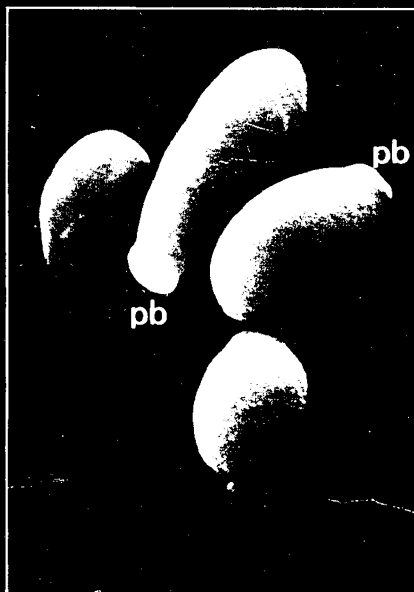
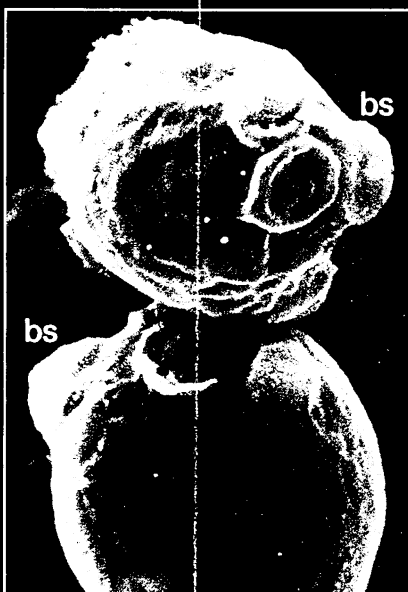


# the fungicidal breakthrough

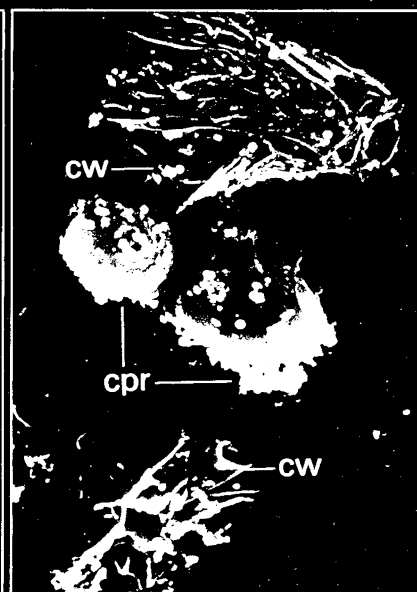
Scanning Electron Microscopic photographs of *Candida albicans* before and after treatment with miconazole.



1. Untreated cells appear as isolated yeast forms in an oval shape and with a smooth surface showing the formation of polar buds (pb).



2. Upon exposure to a fungistatic dose ( $10^{-7}$  M) of miconazole the cells tend to cluster. Budding becomes disorganized with visible budding scars (bs) that are randomly distributed over the surface of the cells.



3. Treatment with a fungicidal dose of miconazole causes the cell wall (cw) to burst. Vesicles of cytoplasm disintegrate and adhere to the surface of yet unbroken cells (cpr). (The interior of the cells is completely lytic).



*the standard fungicidal treatment*

## Daktarin

miconazole nitrate 2 % ww

*highly effective  
in all fungal infections*

further information available on request from:



**Janssen Pharmaceutica**  
2340 Beerse, Belgium.

or from:

Janssen Pharmaceutical Ltd.  
Janssen House, Marlow, Bucks.  
PL0242/0016, 17, 47, 48, 52

Trade Marks: Brentan in Denmark and Spain, Doktor in Germany, Daktarin in all other countries.

### WHY NOT SUBSCRIBE TO THE SPECIALIST JOURNALS PUBLISHED BY THE BMA:—A SELECTION INCLUDES

Archives of Disease in Childhood, British Heart Journal, British Journal of Ophthalmology, Gut, Journal of Clinical Pathology & Journal of Neurology, Neurosurgery & Psychiatry.

FULL DETAILS OF SUBSCRIPTION RATES FROM BMA SPECIALIST PUBLICATIONS: BMA HOUSE, TAVISTOCK SQUARE, LONDON WC1H 9JR  
TELEPHONE 01-387 4499 EXT. 309.

## DISCOUNT HOUSES

# FURNITURE CARPETS

## 15%-33% DISCOUNT

- All leading brands
- Carpet fitting available
- Delivery throughout UK



Hours: Mon to Fri 9.00 - 5.30  
Sat 9.00 - 5.00 (London only)  
BRANCHES CLOSE  
SATURDAYS at 12.30 pm

Orders by post or phone accepted or write  
for introductory brochure to Dept. BMJ

### Dodson Bull

Choose with confidence

Barbican Furnishing Centre (Opposite Barbican Underground Stn.)  
100 Aldersgate Street London EC2Y 6AE Telephone 01 628 7020

**BIRMINGHAM:** 164 Edmund St. B3 2HB Tel. 021 236 5862  
**BOURNEMOUTH:** 268 Old Christchurch Rd., BH1 1PH, Tel. 21248  
**BRIGHTON:** 2 5 North Road, BN1 1YA Tel. 606402  
**BRISTOL:** 2 3 Royal London Hse., Queen Charlotte St. BS1 4EX Tel. 28857  
**EXETER:** 157 Fore St. EX4 3AT Tel. 32019  
**FALMOUTH:** 35 Killgrew St. TR11 3PW Tel. 313555  
**GLASGOW:** 166 Howard St. G1 4HA Tel. 041 221 3278  
**IPSWICH:** 116 118 St. Helens St. IP4 2LT Tel. Ipswich 210268/9  
**LEEDS:** 12 Great George St. LS1 3DW Tel. 41451  
**MANCHESTER:** 55 61 Lever St. M1 1DE Tel. 061 236 3687/8/9  
**NEWCASTLE-upon-TYNE:** 90 92 Pilgrim St. NE1 6SG Tel. 20321/21428  
**WESTCLIFF-on-SEA:** 495 London Rd., SS0 9LG Tel. Southend 46569

(167)

## UP TO 50% CARPETS ANY MAKE SUPPLIED

**— DONT DELAY — PHONE NOW FOR QUOTATION —**  
● FREE DELIVERY ● FITTING ARRANGED  
FURNITURE, KITCHEN UNITS, CURTAINS  
● CONTRACT ENQUIRIES AT TRADE PRICES + OVERHEADS  
**OPEN 9-5pm**  
**Incl SAT (CLOSED WED)**

G. L. CARPETS & FURNISHERS LTD  
1, St. Stephens Parade, Green Street, London E.7.  
Phone 01-472 3219.

### Challenge to B.M.A. Members

If you buy Carpets or Furniture for cash, and shop around looking for the best possible price, write or phone COHAR. Give us the details — we will give you our quote — you won't be sorry. We are confident our prices are very much lower than the lowest estimate you have. Measuring and fitting arranged. With few exceptions Carpets and Furniture carriage paid home. (U.K. mainland and I.O.W.)

**COHAR Distributors Ltd.**

25 Queen St., Glasgow G1 041-221 5064  
89 Union St., Aberdeen 0224 573359

Leeds 34433 Bristol 29 2966  
N'castle 610666 (167)

**SPIKE BROTHERS LIMITED.** 234 Portland Road, South Norwood, London SE25 4SL. Tel: 01-654 8811. 27½ per cent discount on most makes of furniture and beds. 20 per cent on carpets, washing machines, mowers, fridges, televisions, sewing machines, cycles, grams, venetian blinds. 12½ per cent on gas cookers, fires, greenhouses, etc.

(167)

All branches have a comprehensive range of carpets but now half our Bristol, Glasgow, Manchester, and Newcastle is devoted to furniture and fabrics. All goods can be obtained from any branch. Simply discuss your requirements with the manager. He will be pleased to help if required. Credit facilities available.

We can positively offer you a better service, certainly a better selection, and probably a better price.

## 25%-50% DISCOUNT

PLUS FREE  
DELIVERY  
IN UK.

NO EXTRAS!

### Bigger Choice — Bigger Savings

**25% — 50% Discount  
on Branded Furniture Beds,  
Bedding, Carpets Curtains and  
Fabrics**

- Free delivery right to your door.
- All areas of UK mainland/I.O.W.
- Postal/Telephone orders welcomed.
- Personal service before and after sale.
- Low interest credit facilities on discounted prices.
- All items covered by manufacturers' guarantee.

Write, call or telephone today for free estimates and quotations

Over 30 years of service

**SAVE** with **Bains of Ilford**  
133 Ilford Lane, Ilford, Essex. Tel: 01-553 1011/4

**G.E.C. TROPICALISED GOODS,** Air Conditioners, Refrigerators, Freezers, Television, Video, Cookers, Washing Machines, Voltage Stabilisers, Generators, Export price list from Mayfair Refrigeration Ltd, P.O. Box 2LB, 523 Oxford Street, London W1A 2LB. Tel: 01-629 1745/4560. Telex. 262284. 167

**G.F. FELL** 342 Coldharbour Lane, S.W.9. Tel: 01-733 4576. Export prices: Fully automatic sewing machine £161.40 watt. amp/tuner with SW/cassette deck 'Dolby' pair speakers with hi-fi cabinet £470. Air conditioner. 16,000btu £215. 167

### MOTOR CARS

**B.M.A. GARAGE**  
Leyland and Ford Dealers  
**CONTRACT LEASING AVAILABLE**  
Low capital outlay with tax relief. Phone for details.

Mini 850	Pageant Blue
Capri 1.6 GL	Oyster Gold
Cortina 1.6L Estate	Venetian Red
Maxi 1750HL	Denim Blue

Low HP Terms — Part Exchange  
**G.J. SHAFFER & CO. LTD., BMA HOUSE**  
TAVISTOCK SQUARE, WC1  
01-387 6687 (168)

### PEUGEOT

Overseas Sales  
**CODAP (M & S) LTD.**  
Distributor for N.W.  
22 Rochdale Rd.  
Manchester  
061 833 0752 168

**TAX FREE CARS** all continental & Japanese makes for use here and then export or direct shipping. Insurance arranged. Ahmad Automobiles. 33 Charles Street, London W1. Offices open Mon-Sat 9am to 6pm. Tel: 01-493 5197/8388, 01-499 5197. 168

## Drive a new car!

OR MAXIMUM TAX SAVINGS  
AND MINIMUM OUTLAY

CONTACT BRITISH MEDICAL  
FINANCE FOR DETAILS ON:

## 01-262 1272

### TRAVEL

**AFRICA:** Nairobi/E. Africa, Joburg/Salisbury, Central Africa, Lagos all W. Africa, Cairo/Addis, NZ/Australia, Far East, Econ-Air, 2 Albion Buildings, Aldersgate Street, London EC1A 7DT. Tel: 01-606 7968 or 9207. 184

**CHEAP AIR TRAVEL** to India, East West, South Africa, Far East, U.S.A., Canada — Raman Travels Ltd., 2 Denman Street, Piccadilly Circus, London W1V 7RH. Tel: 01-439 3521, 01-734 9500. 184

**ECONOMY JET FLIGHTS** to Africa, Nairobi, Dar-es-Salaam, Nigeria, India, Pakistan, Ceylon, Far East, Tokyo, Hong Kong, Bangkok, Singapore, Australia, New Zealand, U.S.A. and Europe. Unity Travel Services Ltd., Carrington House, 130 Regent Street, London W1. Tel: 437 2665/2929 or 439 3578. 184

**LOW COSTS JETS** worldwide. Consult the experts. Eurovista (Airline Agents), 139 Albion Road, London N16 9JU. Tel: 01-254 9392. Telex 25653. 184

**RELIABLE AND ECONOMICAL** flights, Australia, New Zealand, Singapore, K.L. Colombo, India, Far East, Middle East, Africa, America, Canada, etc. 437 2356/8420 Countryside Travel, 80 Shaftesbury Avenue, London W.1. 184

**UP, UP & AWAY.** Fly worldwide the most economical way to Joburg, Nairobi, Singapore, Tokyo, Bangkok, Rome, Dubai and all European destinations: Flamingo Travel, 76 Shaftesbury Ave., W1. Tel: 01-439 7751/2. 184

**WORLDWIDE** Economy flights, Tidend Ltd., 176 Wardour Street, London W1V 3AA. Tel: (01) 734 4428. 184

### NEW ERA TRAVEL

Provides reliability, efficiency and economy for world wide travel  
**Contact 42, Glasshouse St**  
(Exit 1 Piccadilly tube)  
London W1 Tel: 01-437 7243

(184)

### WORLDWIDE ECONOMY FLIGHTS

Specialists to  
**INDIA, BANGLADESH & PAKISTAN**  
**Romana Air Travel Ltd.**  
122a Nelson Road  
Whitton, Middlesex  
Tel no. 01-898 9581

### AZAT TRAVEL

Economical Flights To:

**INDIA—PAKISTAN—AFRICA  
MIDDLE/FAR EAST—U.S.A.  
AUSTRALIA & ALL EUROPEAN  
DESTINATIONS**

CONTACT US:  
61 Charlotte St., London W1 4DN  
Telephone: 580 4632 (4 lines)  
Telex: 22833G

### HOTELS

**TRESCO.** Isle of Scilly, Island Hotel. Runner-up in "Most Peaceful Hotel in Britain" category in AA's 1978 Guide. Three stars and rosette. Superb food and friendly atmosphere on one of the world's loveliest islands. Re-opens 3rd March when Tresco is ablaze with daffodils. Write for details of our highly acclaimed Gardeners Holidays with full programme of talks, walks slide shows etc. Each week during March and April and from mid-September to mid-October for £125 demi-pension. One of Britain's Prestige Hotels. Tel: Scillonica 0720 22883. 183

# The treatment of UTI in a new light

## Selective

'Very few lower gastrointestinal disorders occurred. This, in all probability, reflects its selective antibacterial activity which limits drug disturbance of the normal colonic and vaginal flora.'<sup>3</sup>

## Effective

'In our clinical trials mecillinam achieved a cure-rate of over 90% at 2 weeks in patients with urinary-tract infections.'<sup>1</sup>

'The original bacterial strain in the urine was eradicated in 100% of the cases.'<sup>2</sup>

## Low Toxicity

'Mecillinam has a novel mode of action but shares the penicillins' low toxicity.'<sup>4</sup>

'...the data establish that pivmecillinam is a safe and potent drug in the treatment of urinary tract infection.'<sup>5</sup>

### References

1. Brumfit, W., and Hamilton-Miller, J.M.T., Lancet, i, 445, 1978.
2. Ekberg, M. et al., Scand J. Infect. Dis., 10, 127, 1978.
3. Bresky, B., J. Antimicrob. Chemother., 3(Suppl. B), 121, 1977.
4. Geddes A.M. and Wise R., J. Antimicrob. Chemother., 3(Suppl. B), iii, 1977.
5. Verrier Jones E.R. and Asscher, A.W., J. Antimicrob. Chemother., 1, 193, 1975.

**SELEXID Prescribing Information** Available as Selexid tablets and Suspension. Each tablet contains 200mg pivmecillinam hydrochloride; each unit-dose foil sachet of suspension contains 100mg pivmecillinam as white granules to be dissolved in a small quantity of water. Tablets and suspension should be taken with a meal. **Dose for Urinary Tract Infections:** Tablets and suspension: From 200mg 8 hourly - 400mg 6 hourly depending on severity. For children weighing less than 40kg: 20-40mg/kg bodyweight daily in 3-4 divided doses. **Contra-indications:** Penicillin or cephalosporin hypersensitivity. **Precautions/Adverse Reactions:** In accordance with normal practice Selexid should be avoided in the 1st trimester of pregnancy. Dosage may need modification when renal function is impaired. Routine monitoring of liver and renal function advisable with prolonged therapy. Gastro-intestinal upset, rash, and anaphylaxis may occur. Full information is available on request. **Price:** £2.82 for a five day course. **Product Licence No.:** 0043/0048.



LEO Leo Laboratories Limited, Hayes Gate House, Hayes, Middlesex

\*Selexid is a trade mark