

Imodium

TRADE MARK

loperamide hydrochloride

made to
measure
treatment for
acute and
chronic
diarrhoea

*The tailored dosage means that
patients only take Imodium when
they need it with no interruption to normal routine.
Imodium is easy to take and convenient to carry.*

*Designed for the specific control of
diarrhoea, Imodium relieves pain and
abdominal cramps rapidly and effectively.*



Janssen Pharmaceutica
2340 Beerse, Belgium

Further information is available from :

Imodium
simply
stops diarrhoea fast.

or from :

Janssen Pharmaceutical Limited,
Janssen House, Marlow, Bucks.

PL 0242/0028 PL 0242/0040

WHY NOT SUBSCRIBE TO THE SPECIALIST JOURNALS PUBLISHED BY THE BMA:—A SELECTION INCLUDES

Archives of Disease in Childhood, British Heart Journal, British Journal of Ophthalmology, Gut, Journal of Clinical Pathology & Journal of Neurology, Neurosurgery & Psychiatry.

FULL DETAILS OF SUBSCRIPTION RATES FROM BMA SPECIALIST PUBLICATIONS: BMA HOUSE, TAVISTOCK SQUARE, LONDON WC1H 9JR
TELEPHONE 01-387 4499 EXT. 309.

*"Committed to providing
personal treatment of general adult
psychiatric illnesses"*

Dr. Hugh Crichton-Miller, one of the founders of British psychiatry, started the Bowden House Clinic in 1911 with treatment and patient-care provided in a warm, friendly atmosphere. This tradition is maintained to-day by skilled staff devoted to the comfort of residents and supported by comprehensive treatment supervised by consultants in various branches of medicine. Facilities include a Physiotherapy Unit, a Geriatric Unit, an Art Therapy Centre and indoor and outdoor games in pleasant grounds. Accommodation with private room, own telephone, colour television and bathroom en-suite is available.

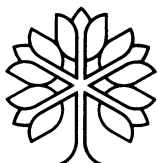
Comprehensive treatment and care are offered over the whole range of emotional and mental disorders, including:

- alcoholic and other problems of addiction
- phobias and obsessional states
- psychosomatic disorders
- eating disorders such as anorexia nervosa and obesity
- depression and schizophrenia
- neurasthenia and the vegetative neuroses

Applications for
admission should
be made to:

The Matron
Bowden House
Clinic

London Road
Harrow-on-the-
Hill
Middlesex
HA1 3JL
Tel: 01-864-
0221/2/3



**BOWDEN HOUSE
CLINIC**

HIGH QUALITY - "KOJAK STYLE" ROTATING BEACON

MAGNETIC BASE
CIGAR LIGHTER
FITMENT

12 VOLT

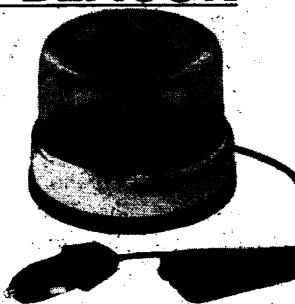
GREEN LENS

MAIL ORDER

£24.95 Inc.

VAT plus £2

Postage & Packing



AIR STORES LTD., 40 ST. PETERS ROAD,
HAMMERSMITH, LONDON W6 9BH.
(01) 748 0226

ADVERTISEMENTS

PHARMACEUTICAL PRODUCTS

Readers are reminded that prescribers' literature and clinical information are always available from advertisers on request.

**JUST
PUBLISHED**

A Colour Atlas of Tumour Histopathology



Noel F. C. Gowing, MD, FRCPath

*Professor of Tumour Pathology at The Institute of Cancer
Research, The Royal Cancer Hospital, London
Consultant Histopathologist, Royal Marsden Hospital, London*

940 superb full-colour photographs, mostly of stained sections, illustrate neoplasms affecting every organ and system. The comprehensive scope and ease of usage of this authoritative book will ensure its constant value as a source of reference

272 pages, size 10 1/4 in x 7 5/8 in, casebound
On sale through good booksellers - price £35 - or, in case of difficulty, available from

Wolfe Medical Publications

Wolfe House 3 Conway Street London W1P 6HE

Published March 1980

Independent Hospital Group Annual Reference Book

**'Anaerobic Infections of Surgical
Importance'** - Dr A. T. Willis, MD, PhD, BSc, FRCPA, FRACP, FRCPath

**'The Clinical and Surgical
Aspects of Gender Identity'** - John Randell, MD, FRCP

**'Recent Considerations on
Parenteral Nutrition'** - M. Ostermann

A few of the authoritative and informative articles in this new edition, which also includes a complete listing of members.

**214 EDITORIAL PAGES
OVER 40 ILLUSTRATIONS
CASE-BOUND COVERS • £7.85**

including postage and packing

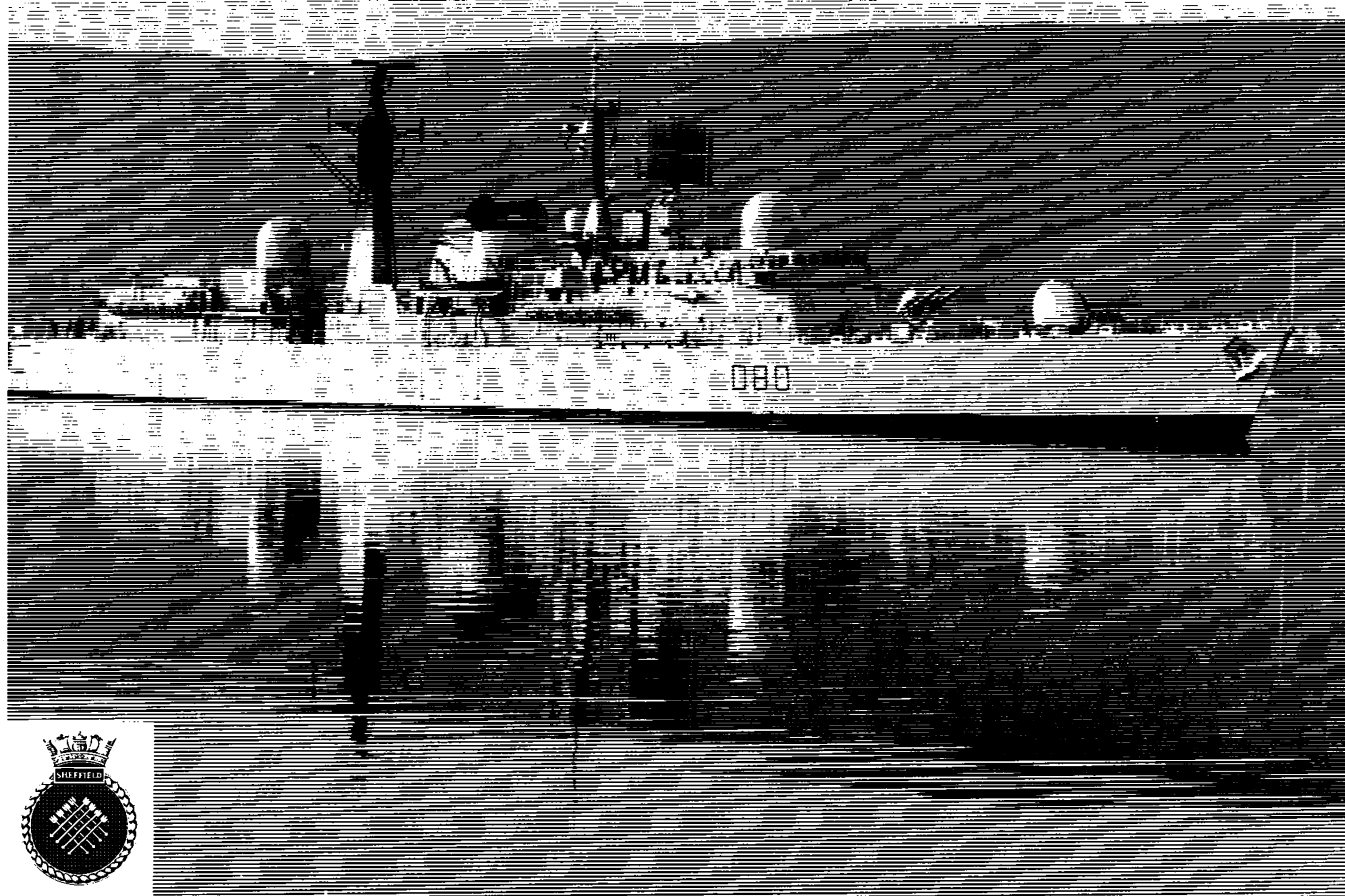
Available from the Official Publishers to whom cheques should be paid:

To: MYDDLETON PUBLISHING CO. LTD., 75/76 LITTLE BRITAIN, LONDON EC1A 7BX

Please send copies of the INDEPENDENT HOSPITAL GROUP REFERENCE BOOK

to:

Cheque number for £ is enclosed.



HMS SHEFFIELD — TYPE 42 GUIDED MISSILE DESTROYER.

WIDEN YOUR HORIZONS AS A ROYAL NAVAL MEDICAL OFFICER.

A 5-year Short Career Commission as a Royal Navy Doctor could be a rich and rewarding experience. You would have the opportunity of serving in ships, in submarines, or with the Royal Marines Commandos, and in a wide variety of Naval Establishments.

There are plenty of opportunities for increasing your scope and experience. Preparation for approved General and Higher Professional Training prior to careers in general practice or the hospital disciplines, for example. Or similar opportunities exist for training in Naval Occupational and Community Medicine, embracing aviation, underwater, submarine, nuclear, preventive and industrial medicine.

There are three ways of becoming a Royal Naval Medical Officer, for both men and women doctors.

Direct Entry as a registered doctor: After acceptance, registered doctors are commissioned with the rank of Surgeon Lieutenant with a salary of £9,677 p.a. At the age of up to 39 and with over five years' recognised seniority as a registered doctor, the entrance rank is that of Surgeon Lieutenant Commander with a salary of £12,495 p.a. There is extra pay for certain recognised post-graduate qualifications and for Specialist or Consultant status.

Entry as a pre-registration doctor: A doctor in the pre-registration year, if accepted, is granted the rank of Acting Surgeon Lieutenant. The pre-registration year may be served either in your own teaching hospital or at a Naval hospital. You would be paid £7,313 p.a. during the year and, after registration, the Short Career Commission commences with the rank and pay of Surgeon Lieutenant.

Entry as a medical student: After gaining your second MB (or equivalent), you can apply for a Naval Cadetship, with the rank of Surgeon Sub-Lieutenant, and you will receive £4,000 p.a. Tuition fees, examination fees and some books are paid for by the Navy.

After your Short Career Commission, you receive a tax-free gratuity. Or you may extend your Short Commission to 8 years or apply to transfer to a Medium or Full Career Commission, which are pensionable. However you see your career shaping, the Royal Navy could make it that much more satisfying. For more information, write to: Surgeon Commander A. L. Revell, MB, ChB, DA, FFARCS, RN (724MD2), Medical Directorate (Naval), Ministry of Defence, First Avenue House, High Holborn, London WC1V 6HE.



ROYAL NAVY MEDICAL OFFICER.

A Comprehensive Pictorial History of Medicine



By ALBERT S. LYONS, M.D., Clinical Professor of Surgery, Mount Sinai Medical Center, New York, NY; and R. JOSEPH PETRUCCELLI, II, M.D., Research Fellow and Instructor, Mount Sinai Medical Center, New York, NY. October, 1978. 618 pages, 10" x 13". 1,020 illustrations including 250 in color. ISBN 0-8016-3374-5. (Hardcover)

Documents, drawings, statuettes and wall paintings – from every conceivable place and epoch – track the growing awareness of diseases, their causes, symptoms and cures. Surgical techniques depicted on Pre-Columbian pottery, herbal prescriptions written on papyrus, sophisticated anatomical studies of the Middle Ages have all been discovered and treasured in archives throughout the world. Now, two distinguished physicians have written this story in all of its captivating detail – complementing it with a wealth of both well-known and rare illustrations. Written for interested professionals and laymen alike, this singular pictorial survey offers one of the most complete, well illustrated and up-to-date treatments of this intriguing subject. And, like the best health care, the book treats every dimension of the subject – drawing upon the social, political and historical background of each advance.

For your copy of **MEDICINE** please send your cheque for £45 to The Trade Dept., **NEW ENGLISH LIBRARY**, Barnard's Inn, Holborn, LONDON EC1N 2NJ Postage & Packing Free

NAME _____

ADDRESS _____

FIRST
ISSUE
MARCH
1980

Nuclear Medicine Communications

ISSN 0143-3636

ANNOUNCING ...

Editors

K E Britton,
St Bartholomews Hospital, London
P J Ell,
Middlesex Hospital, London
R F Jewkes,
Charing Cross Hospital, London

Published in association with the
British Nuclear Medicine Society

Nuclear Medicine Communications is a new rapid communications journal for research findings on nuclear medicine. It will be published six times a year, and, along with articles on all aspects of nuclear medicine, will feature details of forthcoming meetings, conference abstracts and book reviews.

Among the articles in the first issue:

* *Myocardial myoglobin release after acute myocardial infarction*
P S Robinson, S Saltissi, D J Coltart, and D N Croft

* *Avascularity of the femoral head following intracapsular fracture: A comparative scintigraphic and biptic study*
P F Hoiland-Carlson, A Widding, A Uhrenholdt, P Christoffersen, and J Greiff

* *Specification, acceptance testing and quality control: an outline of some problems in testing gamma camera systems*
A Todd-Pokropek

Subscription Rates for 1980

UK: £20.00 per annum
Overseas: £24.00 per annum
Airmail: £26.50 per annum
Single copies: £4.50

Subscriptions should be sent to:
Subscriptions Dept,
Associated Book Publishers,
North Way, Andover, Hants SP10 5BE

Chapman & Hall
1830-1980

The scientific and medical division of
Associated Book Publishers (UK) Ltd.

**WRITE NOW FOR A
SPECIMEN COPY**

A unique investment opportunity for a modest outlay

If you have limited funds to invest, either capital or by regular savings

THIS IS THE PLAN FOR YOU

No other savings plan offers the taxpayer this combination of special attractions.

- * Investment in a **TAX-EXEMPT** Fund.
- * **BEST PERFORMANCE OF ANY FUND** since inception
- * **LIFE COVER** with **NO MEDICAL**

Because of this tax freedom the Government will allow a small investment by either:

A man with a wife and/or dependent children

OR

A woman with at least one dependent child.
So the average family may have two bonds.

DO YOU QUALIFY? - IF SO ACT NOW.

*The underlying fund will be closed to new entrants after **5TH APRIL 1980**, so as to aid active management.*
AFTER THIS DATE NO FURTHER INVESTMENTS WILL BE ALLOWED INTO THIS FUND.

ACT NOW

*Don't miss this unique opportunity -
Send off the Coupon now.*

No stamp is needed if you use the FREEPOST address.

To the: **Medical Insurance Agency Ltd.,**
FREEPOST, B.M.A. House
Tavistock Square, London WC1H 9BR.

MIA

Please send me full details about 'Family Bonds'

BLOCK LETTERS PLEASE

Name

Address

Telephone No. Date of Birth

BMJ 3/80

NATRILIX®

indapamide

a primary antihypertensive agent

Natrilix offers a simple, effective means of controlling blood pressure both in newly diagnosed and in poorly controlled patients with mild to moderate hypertension

Prescribing information

Presentation

Pink biconvex sugar-coated tablets each containing 2.5 mg indapamide hemihydrate.

Uses

For the treatment of hypertension.

Dosage and administration

Adults

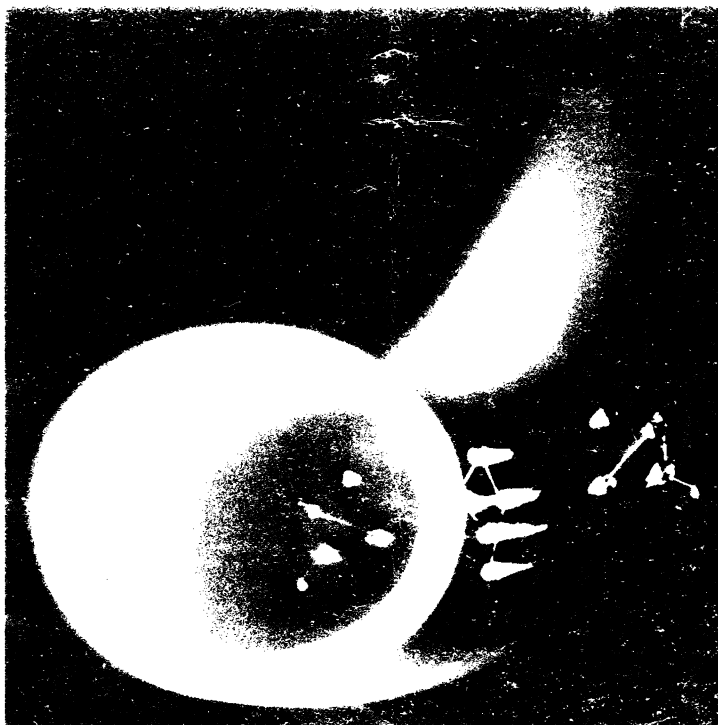
The dosage is one tablet daily to be taken in the morning.

Children

There is no experience of the use of this drug in children.

Contra-indications, warning, etc.

There are no absolute contra-indications to the use of Natrilix but caution should be exercised when prescribing it in cases of severe renal or hepatic impairment. As with all new drugs, the administration of Natrilix should be avoided during pregnancy although no teratological effects have been seen in animals. At doses higher than that recommended, Natrilix has a diuretic effect, therefore it is not recommended to prescribe it with a diuretic agent which may cause hypokalaemia. Also, slight weight loss has been reported in some patients taking Natrilix. Reported side effects have included nausea and headache,



but they are generally uncommon and mild in nature.

Serum urate levels may rise slightly but there is no evidence that glucose tolerance is adversely affected.

Box of 30 tablets.

Product licence number 0093/0022.

NATRILIX is available as: FLUDEX® in Africa, Belgium, France, Holland, Portugal, Switzerland.

NATRILIX® in English speaking Countries of Africa, Brazil, Central America, Germany, Ireland, Italy, Middle East, South East Asia, United Kingdom.

TERTENSIF® in Spain.

NATRIX® in Korea.

Further information is available on request from Servier Laboratories Ltd., Servier House, Horsenden Lane South, Greenford, Middx. UB6 7PW.



Les Laboratoires Servier, 22, rue Garnier - 92201 Neuilly - France.

one tablet daily

WHY NOT SUBSCRIBE TO THE SPECIALIST JOURNALS PUBLISHED BY THE BMA:—A SELECTION INCLUDES

British Journal of Family Planning, Cardiovascular Research, Annals of the Royal College of Surgeons, Annals of Clinical Biochemistry.

FULL DETAILS OF SUBSCRIPTION RATES FROM BMA SPECIALIST PUBLICATIONS: BMA HOUSE, TAVISTOCK SQUARE, LONDON WC1H 9JR
TELEPHONE 01-387 4499 EXT. 309.

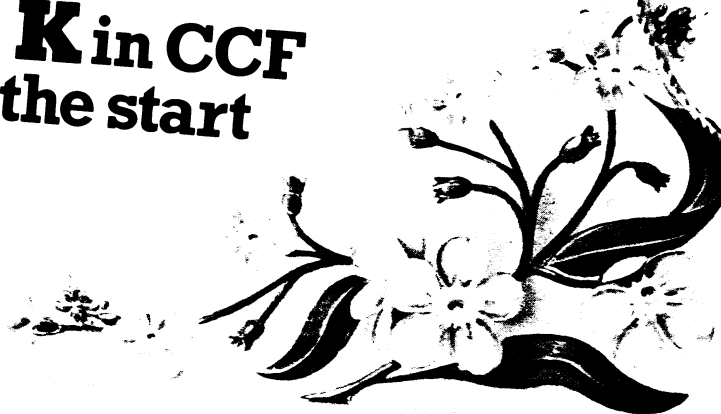
As a fast acting diuretic
Burinex^{*} K
bumetanide and slow-release potassium chloride
is unbeatable...

as a potassium
supplement it's
unforgettable

Your patients rarely forget to take their 'water pill' but all too frequently fail to take their potassium supplement if you prescribe it separately.¹ Burinex K solves this problem because Burinex the 'most effective natriuretic agent'² 'coats' the potassium core - to make it truly unforgettable. In addition - because of the shape and size - it's easier to swallow than the most commonly used potassium supplement alone.³

Burinex K in CCF
right from the start

1. Brit.Med.J., 618, 2, 1977
2. Acta med. scand., 119, 193, 1973
3. J.Int. Res., 104, 3, 1975



Burinex (bumetanide) is a potent short-acting diuretic indicated in the treatment of oedema. Available as Burinex tablets (0.5 mg and 1 mg), Burinex Injection (4 ml and 25 ml ampoules; each ml contains 0.25 mg bumetanide) and Burinex K (0.5 mg bumetanide and 7.7 mmol slow release KCl). **Dosage:** oral and parenteral normally 1 mg. Higher doses may be used in resistant oedema, for long-term maintenance therapy of CCF. Burinex K is usually given as 2 tablets O.M. **Contra-indications:** Hepatic coma and severe electrolyte disturbances. Burinex K should not be used with potassium sparing agents. **Adverse reactions:** Occasional skin rashes and minor gastric upset. **Precautions:** Burinex may potentiate antihypertensive therapy and rarely, may affect carbohydrate metabolism. Periodic electrolyte checks are advisable on long-term therapy. Burinex K should be stopped immediately if signs or symptoms of bowel ulceration appear. Product Licence No: 0043/0027B

*Burinex is a trade mark
Full prescribing information available on request



Leo Laboratories Limited
Hayes Gate House, Hayes, Middx.