

# Imodium

TRADE MARK

loperamide hydrochloride

made to  
measure  
treatment for  
acute and  
chronic  
diarrhoea

*The tailored dosage means that  
patients only take Imodium when  
they need it with no interruption to normal routine.  
Imodium is easy to take and convenient to carry.*

*Designed for the specific control of  
diarrhoea, Imodium relieves pain and  
abdominal cramps rapidly and effectively.*



**Janssen Pharmaceutica**  
2340 Beerse, Belgium

Further information is available from :

**Imodium**  
simply  
stops diarrhoea fast.

or from :

Janssen Pharmaceutical Limited,  
Janssen House, Marlow, Bucks.

PL 0242/0028 PL 0242/0040

**WHY NOT SUBSCRIBE TO THE SPECIALIST JOURNALS PUBLISHED BY THE BMA:—A SELECTION INCLUDES**

Archives of Disease in Childhood, British Heart Journal, British Journal of Ophthalmology, Gut, Journal of Clinical Pathology & Journal of Neurology, Neurosurgery & Psychiatry.

FULL DETAILS OF SUBSCRIPTION RATES FROM BMA SPECIALIST PUBLICATIONS: BMA HOUSE, TAVISTOCK SQUARE, LONDON WC1H 9JR  
TELEPHONE 01-387 4499 EXT. 309.

## Private Medical & Surgical Rehabilitation

The Rehabilitation Unit at Unsted Park provides facilities for the intensive rehabilitation of patients of all ages. Treatment is carried out by a highly qualified, multi-disciplinary team under medical supervision, comprising physiotherapists, remedial gymnasts, occupational therapists, art therapist, speech therapist and nurses. The team is responsible for regular assessments of patients and for establishing individual treatment programmes.

*Subscribers to the main Private Contributory Schemes may claim benefits within the terms of these schemes.*

*Further information is available from the Matron.*

### Unsted Park

Munstead Heath, Godalming, Surrey.  
Telephone: Bramley (048647) 2061.



*"Committed to providing  
personal treatment of general adult  
psychiatric illnesses"*

Dr. Hugh Crichton-Miller, one of the founders of British psychiatry, started the Bowden House Clinic in 1911 with treatment and patient-care provided in a warm, friendly atmosphere. This tradition is maintained to-day by skilled staff devoted to the comfort of residents and supported by comprehensive treatment supervised by consultants in various branches of medicine. Facilities include a Physiotherapy Unit, a Geriatric Unit, an Art Therapy Centre and indoor and outdoor games in pleasant grounds. Accommodation with private room, own telephone, colour television and bathroom en-suite is available.

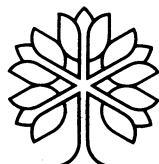
Comprehensive treatment and care are offered over the whole range of emotional and mental disorders, including:

- alcoholic and other problems of addiction
- phobias and obsessional states
- psychosomatic disorders
- eating disorders such as anorexia nervosa and obesity
- depression and schizophrenia
- neurasthenia and the vegetative neuroses

Applications for admission should be made to:

The Matron  
Bowden House  
Clinic

London Road  
Harrow-on-the-  
Hill  
Middlesex  
HA1 3JL  
Tel: 01-864-  
0221/2/3



**BOWDEN HOUSE  
CLINIC**

## now you can review our books ... on approval

### VIRUS HEPATITIS (UK Title)

(Ed.) Sheila Sherlock

(Cl. Gastro. Vol. 9, No. 1) HB £9.00

### LIVER AND BILIARY DISEASE (UK Title)

(Eds.) Wright, R., Alberti, K. G. M. M., Karran, S. & Millward-Sadler, G. H.

-9609.0 HB 1,280pp

Illustrated £38.50 November 1979.

### THE EXOCRINE PANCREAS (UK Title)

(Eds.) Howat, H. T. & Sarles H.

-4779.0 HB 550pp

Illustrated £28.75 November 1979

### GASTROINTESTINAL DISEASE: Pathophysiology, Diagnosis, Management (2/e)

by Sleisenger, M. H. & Fordtran, J. S.

-8362.2 (comb. vol.) HB 2,160pp

995 illustrations £40.00 1978.

### CECIL TEXTBOOK OF MEDICINE (15/e)

(Eds.) Beeson, P. B., McDermott, W. & Wyngaarden, J. B.

-1663.1 (comb. vol.) HB 2,200pp

Illustrated £28.50 July 1979

### METABOLIC CONTROL AND DISEASE (8/e)

by Bondy, P. K. & Rosenberg, L. E.

-1844.8 HB 2,000pp

825 illustrations £42.75 January 1980

### SOFT TISSUE RHEUMATISM (UK Title)

(Ed.) A. St. J. Dixon

(Cl. Rheum. Dis. Vol. 5, No. 3) HB £10.00

### CURRENT THERAPY 1980

(Ed.) Cann, H. F.

-2708.0 HB 1,000pp

Illustrated £19.00 April 1980

### CONTROVERSIES IN THERAPEUTICS

(Ed.) LaSagna, L.

-5653.6 HB 700pp

Illustrated £17.00 April 1980

### CURRENT CONTROVERSIES IN CARDIOVASCULAR DISEASE

by Rapaport.

-7459.3 HB 600pp

Illustrated £23.00 May 1980

*Prices, specifications and availability are subject to change without prior notification.*

## ON-APPROVAL INVITATION

UK residents are invited to examine Saunders medical titles on 14 days approval. Please specify author, title and ISBN number.

Write (no stamps needed in UK) to:

**W. B. Saunders Company**

Dept BMJ/3, Freepost EA86, Professional Division,  
1 St Anne's Road, Eastbourne, East Sussex BN21 1BR  
Telephone: (0323) 638221

\*\*\*\*\*

*When ordering from outside the UK, payment with order is necessary. Payment can be made by cheque/eurocheque/sterling bank draft/credit card\*—American Express, Diners Club, Visa, Access. Please specify author, title, ISBN number, type of credit card, card number, and don't forget to sign your order. Books are despatched post free in UK. Europe and Eire: please add £3.00 per book ordered (P&P). Rest of world: accelerated shipment only, please add £5.00 per book ordered. In Lebanon, please order from your bookseller.*

*\*Credit clearance averages 7 days.*

The combination of  
simple language and straightforward  
line drawings has made the

# ABC OF OPHTHALMOLOGY

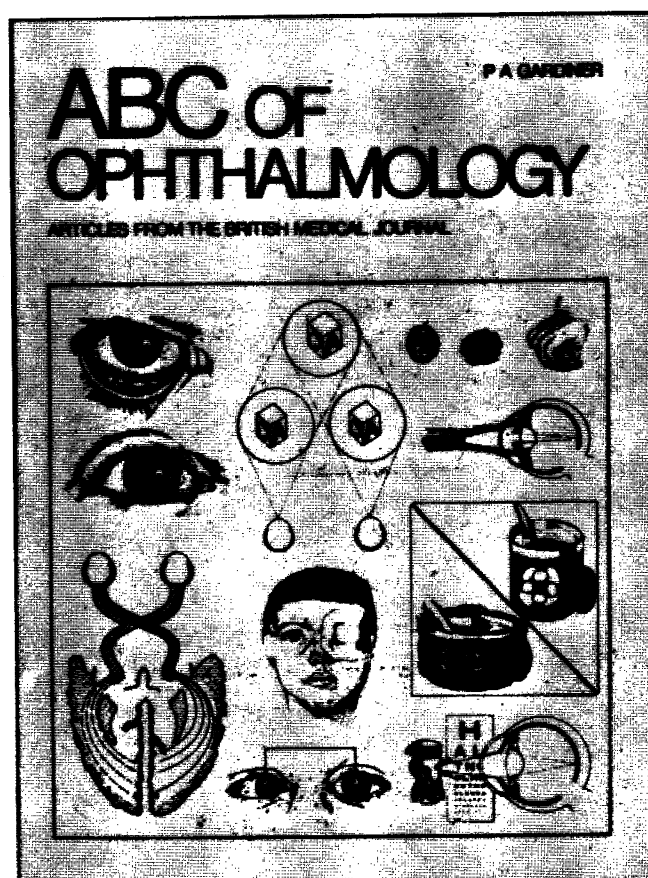
one of the most popular series  
of articles in the Medical Practice section  
of the British Medical Journal.

All the common problems are covered -  
visual defects, squints, glaucoma and  
cataracts - together with detailed  
instruction on examination, diagnosis  
and management.

The articles  
have now been  
collected into book  
form - in exactly  
the same format  
as they appeared in  
the BMJ -  
price: Inland £2.50;  
Overseas US\$6.25  
(Inland £2.00;  
Overseas US\$5.00  
for BMA members).

**AVAILABLE NOW**

**Order your copy now**  
From: The Publisher,  
British Medical Journal,  
BMA House,  
Tavistock Square,  
London WC1H 9JR  
*or any leading bookseller*



# NATRILIX<sup>®</sup>

indapamide

## a primary antihypertensive agent

Natrilix offers a simple, effective means of controlling blood pressure both in newly diagnosed and in poorly controlled patients with mild to moderate hypertension

### Prescribing information

#### Presentation

Pink biconvex sugar-coated tablets each containing 2.5 mg indapamide hemihydrate.

#### Uses

For the treatment of hypertension.

#### Dosage and administration

##### Adults

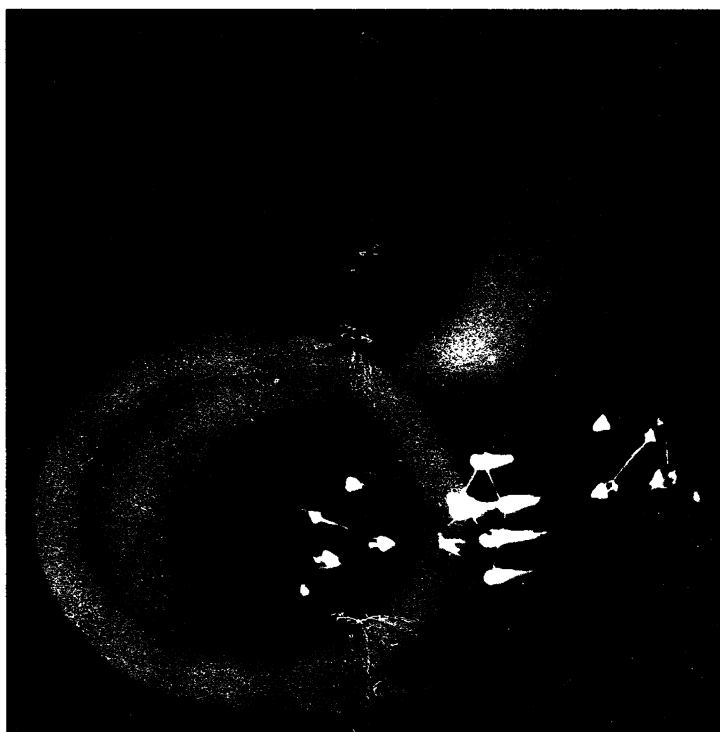
The dosage is one tablet daily to be taken in the morning.

##### Children

There is no experience of the use of this drug in children.

#### Contra-indications, warning, etc.

There are no absolute contra-indications to the use of Natrilix but caution should be exercised when prescribing it in cases of severe renal or hepatic impairment. As with all new drugs, the administration of Natrilix should be avoided during pregnancy although no teratological effects have been seen in animals. At doses higher than that recommended, Natrilix has a diuretic effect, therefore it is not recommended to prescribe it with a diuretic agent which may cause hypokalaemia. Also, slight weight loss has been reported in some patients taking Natrilix. Reported side effects have included nausea and headache,



but they are generally uncommon and mild in nature.

Serum urate levels may rise slightly but there is no evidence that glucose tolerance is adversely affected.

Box of 30 tablets.

Product licence number 0093/0022.

NATRILIX is available as: FLUDEX<sup>®</sup> in Africa, Belgium, France, Holland, Portugal, Switzerland.

NATRILIX<sup>®</sup> in English speaking Countries of Africa, Brazil, Central America, Germany, Ireland, Italy, Middle East, South East Asia, United Kingdom.

TERTENSIF<sup>®</sup> in Spain.

NATRIX<sup>®</sup> in Korea.

Further information is available on request from Servier Laboratories Ltd., Servier House, Horsenden Lane South, Greenford, Middx. UB6 7PW.



Les Laboratoires Servier, 22, rue Garnier - 92201 Neuilly - France.

## one tablet daily

### WHY NOT SUBSCRIBE TO THE SPECIALIST JOURNALS PUBLISHED BY THE BMA:—A SELECTION INCLUDES

British Journal of Family Planning, Cardiovascular Research, Annals of the Royal College of Surgeons, Annals of Clinical Biochemistry.

FULL DETAILS OF SUBSCRIPTION RATES FROM BMA SPECIALIST PUBLICATIONS: BMA HOUSE, TAVISTOCK SQUARE, LONDON WC1H 9JR  
TELEPHONE 01-387 4499 EXT. 309.



Out of the shadows of depression  
and irrational fear with

**Anafranil<sup>®</sup> 10mg**  
(clomipramine hydrochloride)

**Geigy**

anil (clomipramine hydrochloride). **Dosage:** Depression—30–50mg per day. In severe cases increase to 75mg or higher if necessary. Phobic/Obsessional States—usually higher dosage—build up to 100–150mg per day. **Contra-indications:** 1) Anafranil is contra-indicated in conjunction with, or within 14 days of treatment with a monoamine oxidase inhibitor. 2) In existing liver damage. 3) In cardiac/circulatory failure or following a recent myocardial infarction. **Precautions:** Caution is necessary in patients with pre-existing cardiac disease, glaucoma, and retention of urine. Great caution in patients with epilepsy. Anafranil may antagonise the action of certain antihypertensive drugs, and may potentiate the cardiovascular action of noradrenaline and adrenaline. As with other drugs, avoid using during the first trimester of pregnancy if possible. **Side effects:** Dry mouth, sweating, difficulty with accommodation, constipation, disturbance of micturition, tachycardia. Less commonly tremor, ataxia, orthostatic hypotension and vertigo. Rarely anxiety, agitation, fatigue, drowsiness, confusion, insomnia and headache. Epileptiform seizures have occurred in a small number of patients. Symptomless hyperthermia and allergic skin reactions are extremely rare. Interference with sexual function, particularly ejaculation, may be encountered. Agranulocytosis has occasionally occurred in patients on tricyclic antidepressants—routine blood counts are advised during treatment with Anafranil. **Availability:** Two-tone yellow/caramel capsules of 10mg (PL0001/0037) £3.10 per 100. Two-tone orange/caramel capsules of 25mg (PL0001/5000) £6.11 per 100. Two-tone blue/caramel capsules of 50mg (PL0001/0068) £11.63 per 100. Orange flavoured and coloured syrup containing 25mg of Anafranil in 5ml (PL0001/5001) £5.55 per 150ml bottle. Full prescribing information is available on request from Geigy Pharmaceuticals, Horsham, West Sussex.