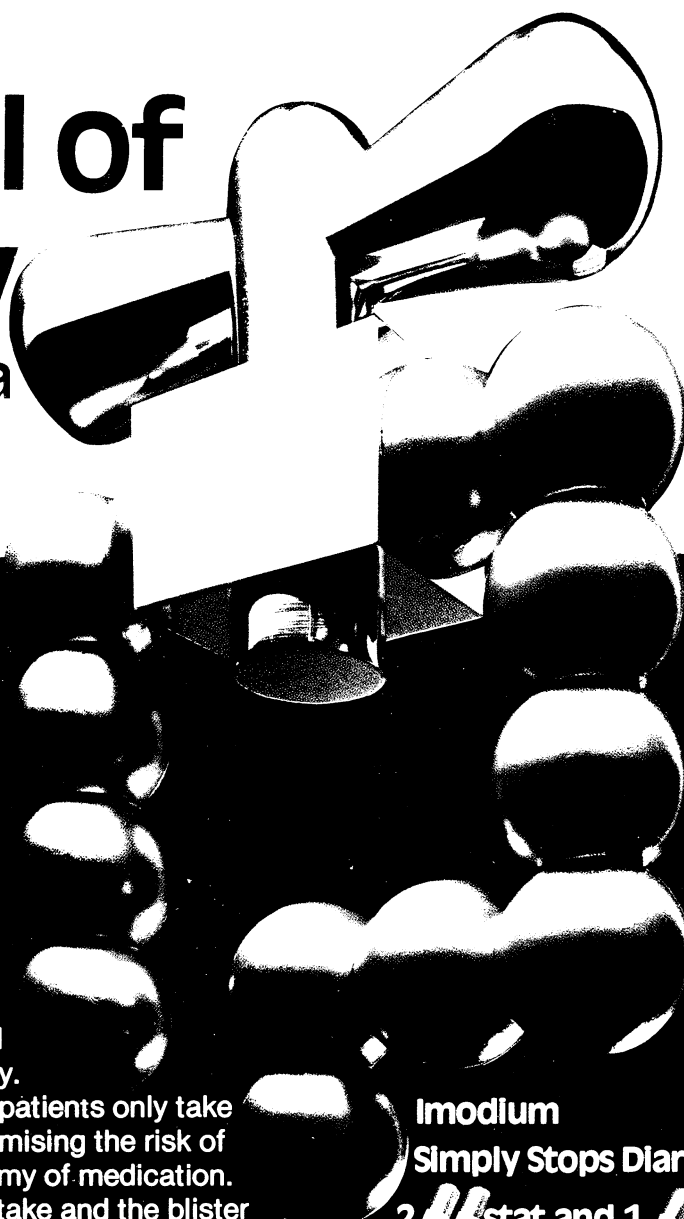


Imodium

TRADEMARK

(loperamide hydrochloride)

symbol of
accuracy
in acute diarrhoea



Imodium's specific action controls diarrhoea, relieving pain and abdominal cramps rapidly and effectively.

A tailored dosage regime means that patients only take Imodium when they really need it, minimising the risk of constipation and encouraging economy of medication. Patients will find Imodium capsules easy to take and the blister pack of just twelve capsules is convenient to carry throughout the working day.

Imodium

Simply Stops Diarrhoea-fast

2 // stat and 1 //
at each loose stool

Further information is available from :



JANSSEN PHARMACEUTICA
2340 Beerse, Belgium

or

JANSSEN PHARMACEUTICAL LTD.
Marlow, Bucks. SL7 1ET.

Presentation :

Hard gelatin capsules containing 2 mg loperamide hydrochloride and syrup containing 1 mg loperamide hydrochloride per 5 ml.

Indications :

Imodium* is indicated for the symptomatic control of acute diarrhoea of any aetiology.

Contra-indications and warnings etc. :

There are no specific contraindications to Imodium*. Studies in animals have shown to abnormal teratogenic effects, however the use of loperamide during pregnancy is subject to the usual precautions. In trials, no side effects have been reported that can reliably be distinguished from the symptoms of the gastro-intestinal disorder being treated. As persistent diarrhoea can be an indicator of potentially more serious conditions, Imodium* should not be used for prolonged periods until the underlying cause of the diarrhoea has been investigated.

Dosage and Administration :

Acute Diarrhoea : Adults : Two capsules initially, followed by one capsule after every loose stool. The usual dosage is 3 to 4 capsules a day; the maximum daily dose should not exceed 8 capsules. **Children :** 4 to 8 years : Syrup 5 ml four times daily until diarrhoea is controlled. In children under 8 years, further investigation may be necessary if diarrhoea has not responded to three days' treatment. 9 to 12 years : Syrup 10 ml (or 1 capsule) four times daily until diarrhoea is controlled.

Basic NHS Cost :

12 capsules (ex 250 pack) 104p. (correct at time of printing)

Product Licence Numbers :

Capsules 0242/0028 - Syrup 0242/0040

HOW TO DO IT

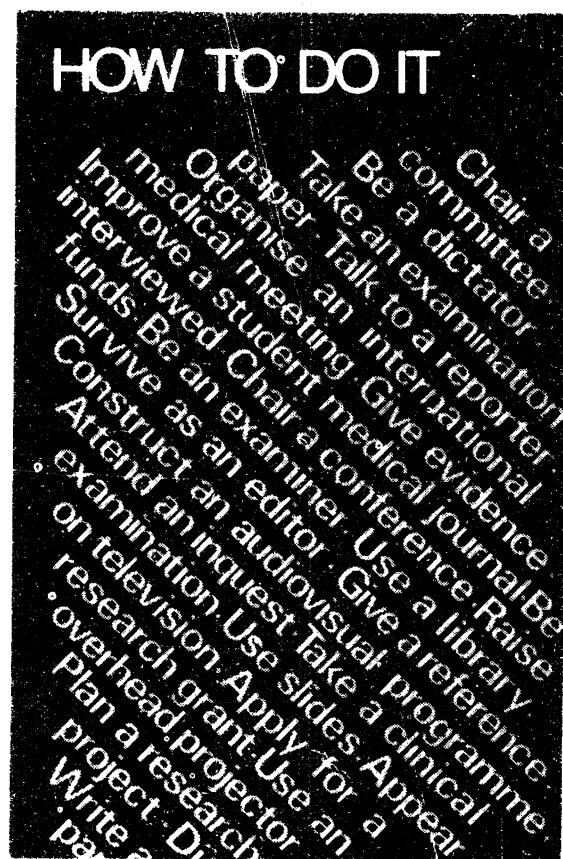
Every doctor knows the sinking sensation induced by waiting one's turn for an examination viva and the social anxieties of changing jobs. The misery of first night nerves does not, however, disappear with time: each decade brings new challenges. On these occasions—chairing a committee, giving evidence in court, appearing on television—practical tips can be enormously helpful. The same is true of the many skills not taught in medical school—how to lecture, referee papers, edit, or use a library. All these and many more nuggets of down-to-earth advice have been collected from past issues of the *BMJ* to form a compendium for the novice—whatever his or her age or seniority.

Price: Inland £4.00;
Abroad US\$10.00
(Concessionary price to BMA
members: Inland £3.50;
Abroad US\$8.75.

When ordering BMA members must
quote their membership number or
the full price will be applicable.)

Payment must be enclosed with order or a surcharge
of 30p will be made for rendering invoices and
statements.

Order your copy now
From: The Publisher
British Medical Journal
BMA House
Tavistock Square
London WC1H 9JR
or any leading bookseller



ABC OF OPHTHALMOLOGY

All the common problems are covered – visual defects, squints, glaucoma and cataracts – together with detailed instruction on examination, diagnosis and management.

AVAILABLE NOW

ABC OF OPHTHALMOLOGY

ARTICLES FROM THE BRITISH MEDICAL JOURNAL

The collage contains several medical illustrations: two detailed drawings of human eyes (one normal, one with a dark pupil); three small diagrams of the eye's internal structure; a stethoscope; a profile of a human face; a hand holding a pen over a document with the letters 'H' and 'A' visible; and a diagram of a hand holding a pen over a document with the letters 'H' and 'A' visible.

Just published **EPIDEMIOLOGY FOR THE UNINITIATED**

Do you know the difference between the incidence of a disease and its prevalence? How to set up a valid controlled trial? How to plan and conduct a survey? Many doctors would like to carry out some simple clinical research but find they lack basic information of this kind. The answers were published in 1978-79 in a series of BMJ articles, now collected together in book form—essential reading for anyone contemplating starting a research study.

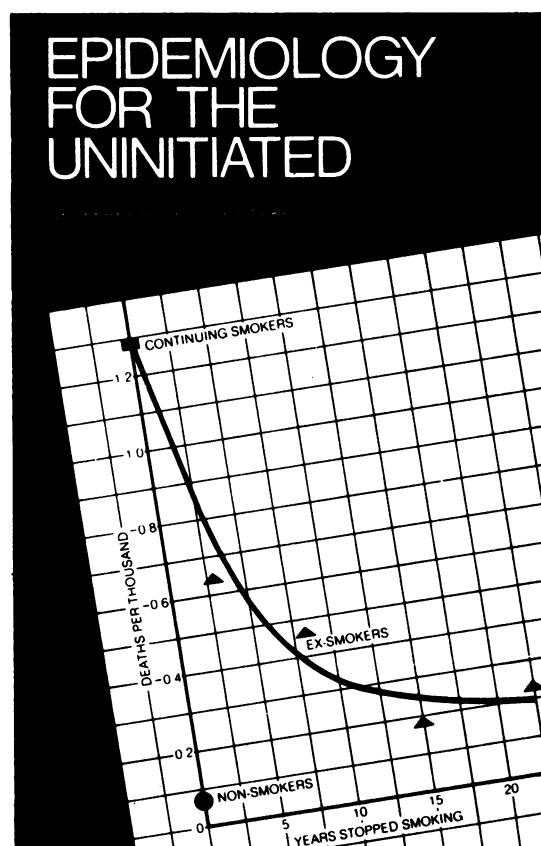
Price: Inland £2.50;
Abroad US\$6.25

(Concessionary price to BMA members: Inland £2.00;
Abroad US\$5.00.

When ordering BMA members must quote their membership number or the full price will be applicable.)

Payment must be enclosed with order or a surcharge of 30p will be made for rendering invoices and statements.

Order your copy now
From: The Publisher
British Medical Journal
BMA House
Tavistock Square
London WC1H 9JR
or any leading bookseller



**First Impression 1974
Reprinted 1978**

MEDICINE IN OLD AGE

The series of twenty two articles published in the *British Medical Journal* have been collected in book form as a convenient source of reference for general practitioners. The emphasis is on remedial mechanisms, and the use that can be made of psychogeriatric and social services in keeping the elderly healthy and relatively independent members of the community.

Demy Octavo

Paperback
ISBN 0 900221 93 3

175 pages

Price: Inland £2.00; Abroad US\$5.00 including postage

Payment must be enclosed with order or a surcharge of 30p will be made for rendering invoices and statements

ORDER YOUR COPY NOW

**From: The Publisher, British Medical Journal, BMA House,
Tavistock Square, London WC1H 9JR
or through any leading bookseller**

TODAY'S TREATMENT/3

Diseases of the respiratory and urinary systems account for a high proportion of all consultations in general practice, justifying the 200 pages devoted to them in the third volume of Today's Treatment. The remaining section deals with the use of antibiotics across the whole spectrum of medicine, looking at the advantages and drawbacks of the major categories and their use in clinical settings where decision-making may be difficult. Like its predecessors, Today's Treatment/3 concentrates on practical issues and provides the busy clinician with the information he needs in his day to day practice.

Price: Inland £5.50;
Abroad US\$13.75

(Concessionary price to BMA members:

Inland £5.00; Abroad US\$12.50.

When ordering BMA members must quote their membership number or the full price will be applicable.)

Complete your collection of this series by ordering copies of Today's Treatment 1 and 2 at the combined reduced rate of Inland £6.00; Abroad US\$15.00 thereby saving 25% of the full price.

Order your copies now from

The Publisher,
BRITISH MEDICAL JOURNAL,
BMA House,
Tavistock Square,
London WC1H 9JR

or through any leading bookseller



STATISTICS AT SQUARE ONE

by T. D. V. SWINSCOW

from the British Medical Journal

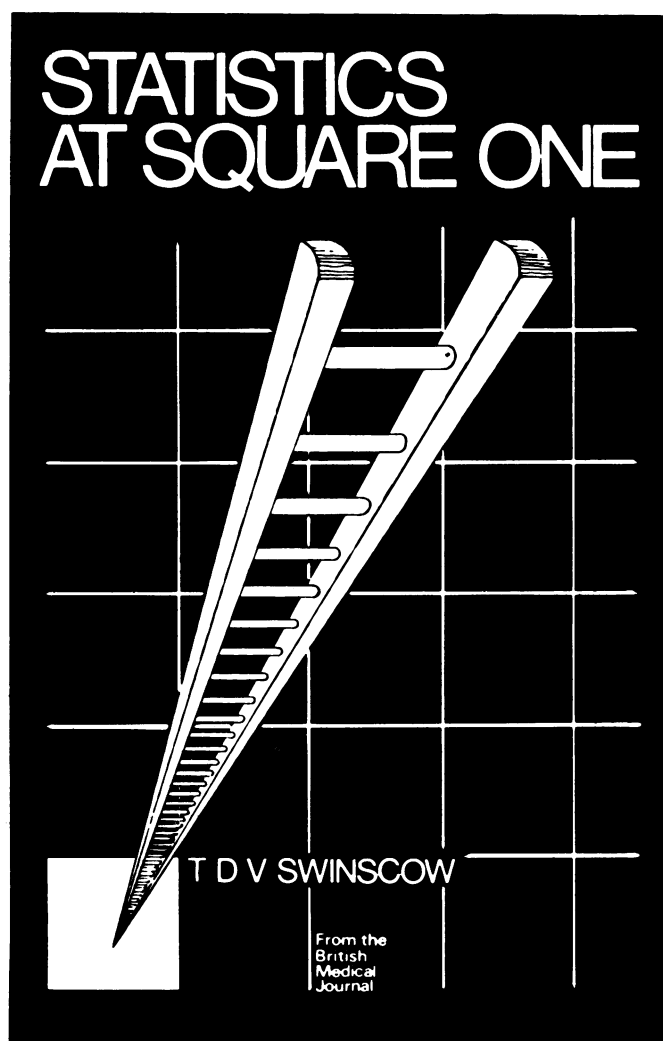
The statistical testing of data is indispensable in many types of medical investigation and a help on countless occasions in clinical practice. This book provides step-by-step instruction. Subjects covered include standard deviation, χ^2 tests, t tests, non-parametric tests and correlation. Methods specially adapted to pocket calculators.

"The ability to put symbols in sequence may well be one of the greatest advances in man's development. . . . This excellent and attractive volume will give you an idea into which category an article or projected article fits. The ink you save may be your own. It is superb value."

O'Donnell, Barry, *British Medical Journal*, 1977, 1, 451.

" . . . this gem of a practical booklet squeezes the essence of biostatistics into 75 well-written, well-organized pages. Newcomers to the field will like the way obscure concepts are clarified; experts will find the book valuable as a teaching aid."

de Jong, Rudolph H., *J.A.M.A.*, 1977, 237, 1874



Fourth edition

**PRICE: Inland £2.00
Overseas US\$5.00**

Payment must be enclosed with order or a surcharge of 30p will be made for rendering invoices and statements

ORDER YOUR COPY NOW

From: The Publisher,
British Medical Journal,
BMA House,
Tavistock Square,
London WC1H 9JR

or through any leading bookseller

NATRILIX[®]

indapamide

a primary antihypertensive agent

Natrilix offers a simple, effective means of controlling blood pressure both in newly diagnosed and in poorly controlled patients with mild to moderate hypertension

Prescribing information Presentation

Pink biconvex sugar-coated tablets each containing 2.5 mg indapamide hemihydrate.

Uses

For the treatment of hypertension.

Dosage and administration

Adults

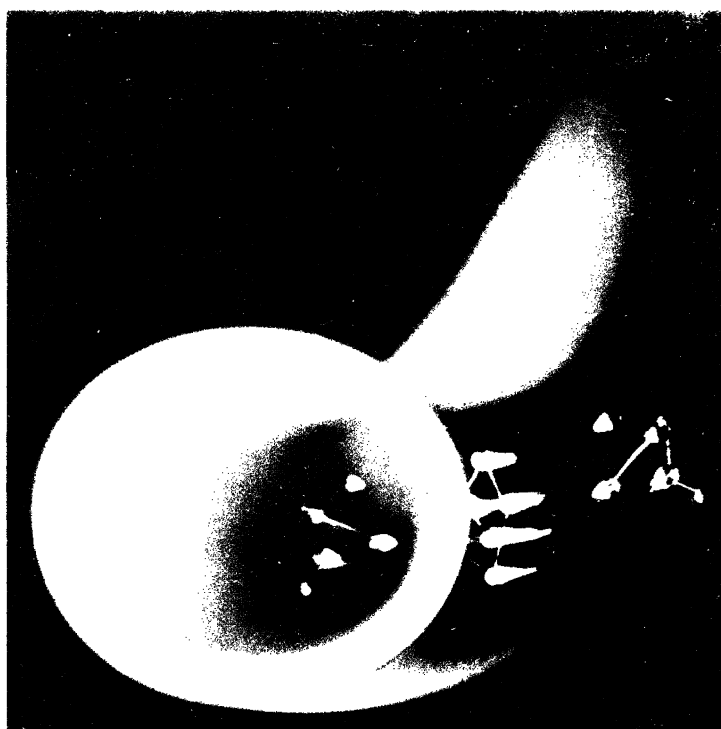
The dosage is one tablet daily to be taken in the morning.

Children

There is no experience of the use of this drug in children.

Contra-indications, warning, etc.

There are no absolute contra-indications to the use of Natrilix but caution should be exercised when prescribing it in cases of severe renal or hepatic impairment. As with all new drugs, the administration of Natrilix should be avoided during pregnancy although no teratological effects have been seen in animals. At doses higher than that recommended, Natrilix has a diuretic effect, therefore it is not recommended to prescribe it with a diuretic agent which may cause hypokalaemia. Also, slight weight loss has been reported in some patients taking Natrilix. Reported side effects have included nausea and headache,



but they are generally uncommon and mild in nature.

Serum urate levels may rise slightly but there is no evidence that glucose tolerance is adversely affected.

Box of 30 tablets.

Product licence number 0093/0022.

NATRILIX is available as: FLUDEX[®] in Africa, Belgium, France, Holland, Portugal, Switzerland.

NATRILIX[®] in English speaking Countries of Africa, Brazil, Central America, Germany, Ireland, Italy, Middle East, South East Asia, United Kingdom.

TERTENSIF[®] in Spain.

NATRIX[®] in Korea.

Further information is available on request from Servier Laboratories Ltd., Servier House, Horsenden Lane South, Greenford, Middx. UB6 7PW.



Les Laboratoires Servier, 22, rue Garnier - 92201 Neuilly - France.

one tablet daily

WHY NOT SUBSCRIBE TO THE SPECIALIST JOURNALS PUBLISHED BY THE BMA:—A SELECTION INCLUDES

British Journal of Family Planning, Cardiovascular Research, Annals of the Royal College of Surgeons, Annals of Clinical Biochemistry.

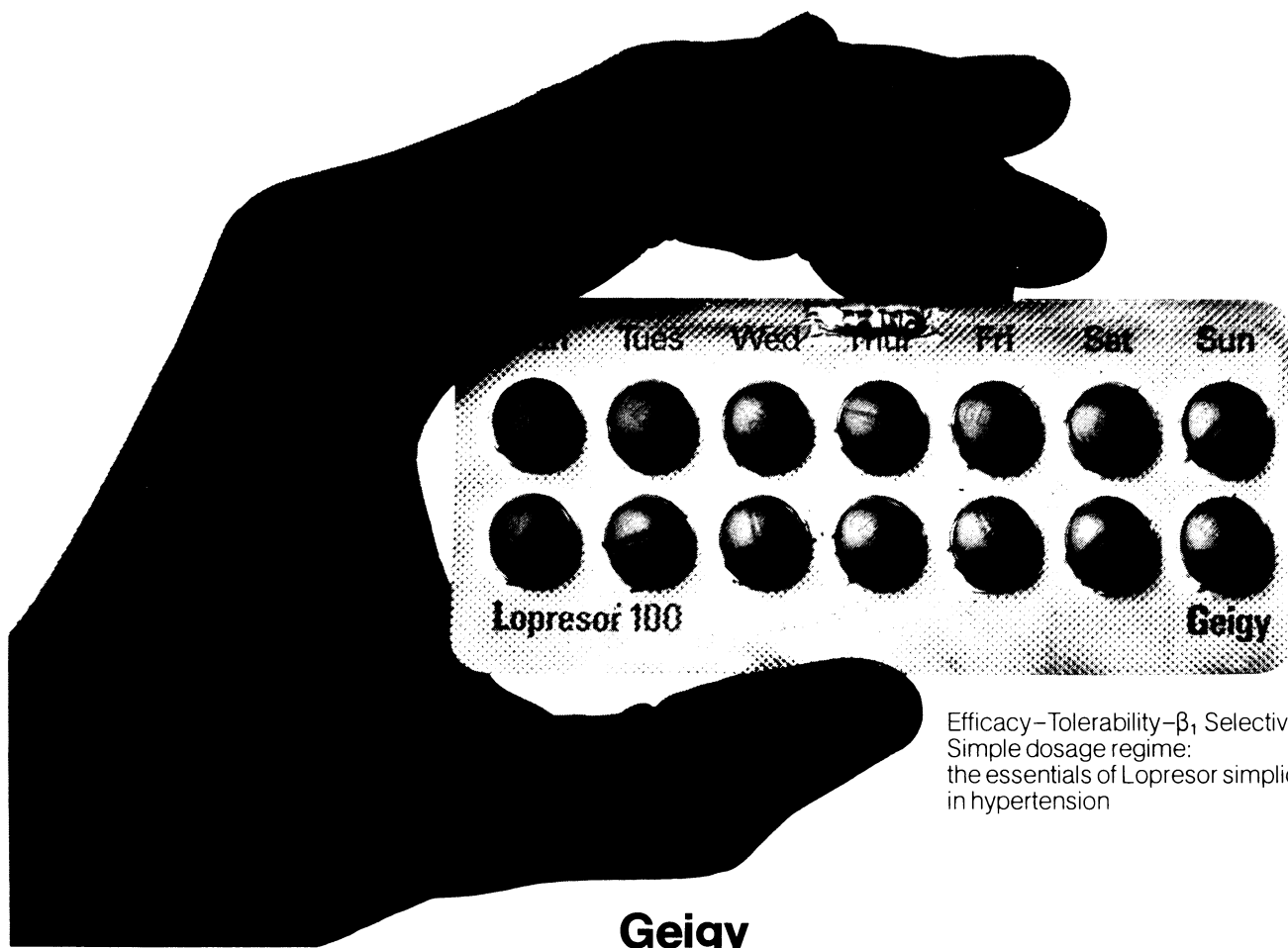
FULL DETAILS OF SUBSCRIPTION RATES FROM BMA SPECIALIST PUBLICATIONS: BMA HOUSE, TAVISTOCK SQUARE, LONDON WC1H 9JR
TELEPHONE 01-387 4499 EXT. 309.

control at your
fingertips

Lopresor[®] 100

metoprolol tartrate

simply right for
hypertension



Efficacy-Tolerability- β_1 Selectivity-
Simple dosage regime:
the essentials of Lopresor simplicity
in hypertension

Geigy

Lopresor Presentation: Pale red, round film-coated tablets, each containing 50mg. Lopresor is also available as light blue round tablets, each containing 100mg.
Indications: Hypertension and angina pectoris. **Dosage and Administration:** *Hypertension:* Initially, one 100mg tablet morning and evening should be given. The dosage may be increased to 2 x 100mg twice daily according to response. Most patients will respond to two 100mg tablets twice daily or less, particularly if Lopresor is used in conjunction with a diuretic such as chlorthalidone or a vasodilator such as hydralazine. The total daily dose of Lopresor may be given as a single dose if required. *Angina pectoris:* One or two x 50mg tablets twice or three times daily. **Side-effects:** Slight gastro-intestinal discomfort and disturbance of sleep pattern occasionally occur. There have been reports of skin rashes and/or dry eyes associated with the use of beta-adrenoceptor blocking drugs. The reported incidence is small and in most cases the symptoms have cleared when treatment was withdrawn. Discontinuance of the beta-adrenoceptor blocking drugs should be considered if any such reaction is not otherwise explicable. Cessation of therapy with a beta-blocker should be gradual. **Precautions:** Cardiac failure must be controlled before initiating Lopresor therapy. Caution should be observed when treating asthmatics. It may be necessary to adjust the dosage of antidiabetic medication. As with other drugs, beta-blockers should only be used during pregnancy if there are compelling reasons. **Contra-indications:** Atrioventricular block, digitalis-refractory heart failure, severe bradycardia and cardiogenic shock. **Packs:** Lopresor 100mg (PL0001/0066) Packs of 100 tablets £8.97. Calendar packs of 56 tablets £5.03. Lopresor 50mg (PL0001/0065) Packs of 100 tablets £4.83. Further information is available on request from Geigy Pharmaceuticals, Horsham, West Sussex.