

NEW PRODUCT

# Step forward in the treatment of Angina.

Only surgery can adequately restore the underlying perfusion deficit in ischaemic heart disease. It is, of course, possible to lower myocardial work by reducing load or limiting rate or contractility, so that demand does not outstrip the limited supply of oxygen.

There is, however, another more fundamental option in the protection of the myocardium from the early consequences of ischaemia: that is to prevent calcium overload in the myocardial cell.

Clinium\* (lidoflazine) selectively blocks entry of excess calcium into the ischaemic myocardial cell,<sup>1,2</sup> thus preserving normal contraction and relaxation.

Cardiac output is maintained and with normal diastole, perfusion is maximised.<sup>3,4</sup> As a result Clinium\* alleviates anginal symptoms, while enabling a markedly increased level of exercise tolerance to be achieved by anginal patients.<sup>5,6,7,8.</sup>

#### References

1. Nayler, W.G. *Proc Roy Soc Med. Suppl.* (in press 1980).
2. Flameng, W. *et al Proc Roy Soc Med. Suppl.* (in press 1980).
3. Detry, J.M.R. *et al Eur J Cardiol* **4**, 165, 1976.
4. Gobel, F.L. *et al Am J Cardiol* **37**, 139, 1976.
5. Jenkins, M.D. *et al Proc Roy Soc Med. Suppl.* (in press 1980).
6. Bloem, Th. J.J.M. *et al Clin Cardiol* **2**, 407, 1979.
7. Shapiro, W. *Proc Roy Soc Med. Suppl.* (in press 1980).
8. Nordstrom, L.A. *Chest*, **74**, 50, 1978.

#### Prescribing Information

**Presentation:** Tablets containing 120 mg lidoflazine.

**Uses:** Angina pectoris in patients with ischaemic heart disease.

**Dosages:** The usual daily dose is 360 mg as 120 mg t.d.s. (taken with or after meals) introduced over two weeks as follows:

Week 1, 120 mg daily. Week 2, 120 mg b.d.

Week 3 (and subsequently) 120 mg t.d.s.

**Contra-indications:** Pregnancy.

**Warning:** Clinium is not indicated for the primary treatment of cardiac arrhythmia.

**Side-effects:** Gastric upset, or transient dizziness, tinnitus or headaches are occasionally observed, (and may be avoided by gradual introduction of dosage).

**Basic NHS cost:** Pack of 100 tablets, £10.00.

**Further information:** Clinium may produce a characteristic ECG change seen as broadening of the T wave.

**Product Licence No.** PL 0242/0002.

**Holder of the Product Licence:** Janssen Pharmaceutical Ltd., Marlow, Buckinghamshire.



Further information is available from:  
**Janssen Pharmaceutical Limited,**  
Janssen House, Chapel Street, Marlow,  
Bucks. SL7 1ET.  
\*Trademark



**Clinium** TRADEMARK  
(lidoflazine)

**a selective calcium antagonist that  
protects the ischaemic myocardium.**

# NATRILIX<sup>®</sup>

indapamide

## a primary antihypertensive agent

Natrilix offers a simple, effective means of controlling blood pressure both in newly diagnosed and in poorly controlled patients with mild to moderate hypertension

### Prescribing information

#### Presentation

Pink biconvex sugar-coated tablets each containing 2.5 mg indapamide hemihydrate.

#### Uses

For the treatment of hypertension.

#### Dosage and administration

##### Adults

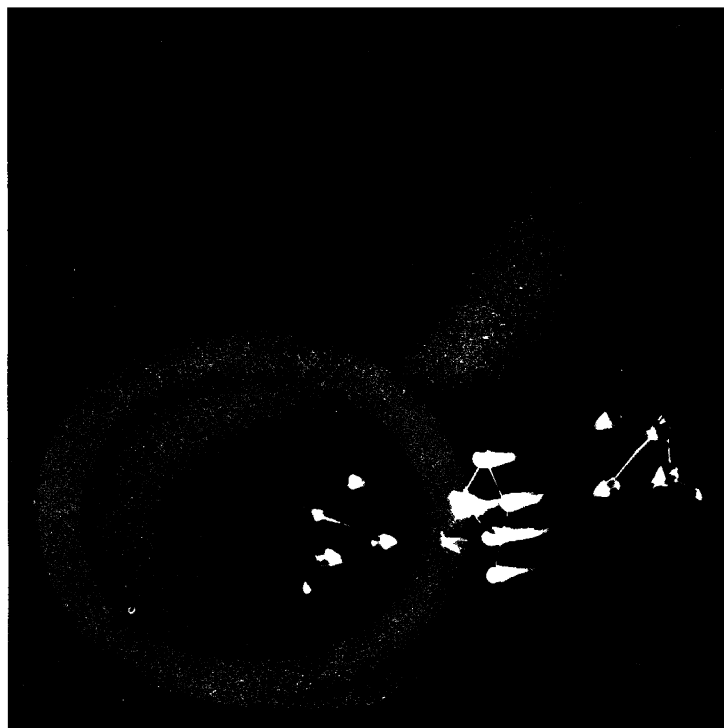
The dosage is one tablet daily to be taken in the morning.

##### Children

There is no experience of the use of this drug in children.

#### Contra-indications, warning, etc.

There are no absolute contra-indications to the use of Natrilix but caution should be exercised when prescribing it in cases of severe renal or hepatic impairment. As with all new drugs, the administration of Natrilix should be avoided during pregnancy although no teratological effects have been seen in animals. At doses higher than that recommended, Natrilix has a diuretic effect, therefore it is not recommended to prescribe it with a diuretic agent which may cause hypokalaemia. Also, slight weight loss has been reported in some patients taking Natrilix. Reported side effects have included nausea and headache,



but they are generally uncommon and mild in nature.

Serum urate levels may rise slightly but there is no evidence that glucose tolerance is adversely affected.

Box of 30 tablets.

Product licence number 0093/0022.

NATRILIX is available as: FLUDEX<sup>®</sup> in Africa, Belgium, France, Holland, Portugal, Switzerland.

NATRILIX<sup>®</sup> in English speaking Countries of Africa, Brazil, Central America, Germany, Ireland, Italy, Middle East, South East Asia, United Kingdom.

TERTENSIF<sup>®</sup> in Spain.

NATRIX<sup>®</sup> in Korea.

Further information is available on request from

Servier Laboratories Ltd.,  
Servier House, Horsenden Lane  
South, Greenford, Middx.  
UB6 7PW.



Les Laboratoires Servier,  
22, rue Garnier - 92201 Neuilly -  
France.

## one tablet daily

### WHY NOT SUBSCRIBE TO THE SPECIALIST JOURNALS PUBLISHED BY THE BMA:—A SELECTION INCLUDES

British Journal of Family Planning, Cardiovascular Research, Annals of the Royal College of Surgeons, Annals of Clinical Biochemistry.

FULL DETAILS OF SUBSCRIPTION RATES FROM BMA SPECIALIST PUBLICATIONS: BMA HOUSE, TAVISTOCK SQUARE, LONDON WC1H 9JR  
TELEPHONE 01-387 4499 EXT. 309.



# TEGRETOL<sup>®</sup>

carbamazepine BP

## an extra dimension in epilepsy control

Effective control of temporal lobe and grand mal epilepsy with benefits for mood and behaviour.

"If, as this study suggests, carbamazepine is less liable to impair mentation and psychiatric states of epileptic patients than other drugs, then it represents an important advance in therapy."

Trimble, M.

Tegretol in Epilepsy, Proceedings of an International Meeting, Guernsey (1977).

# Geigy

TEGRETOL (carbamazepine BP) Uses: Epilepsy – grand mal and temporal lobe Trigeminal neuralgia. Dosage: Use a gradually increasing, divided dosage regimen. Children: up to 1 year old, 100-200mg per day; aged 1-5 years, 200-400mg per day; aged 5-10 years, 400-600mg per day; aged 10-15 years, 600-1000mg per day. Adults: 100-200mg per day, increasing to 800-1200mg per day, in some cases 1600mg per day may be needed. It is recommended that plasma drug levels be monitored; optimum therapeutic range is 3-10µg/ml (13-42µmol/l). Contra-indication: Previous drug sensitivity to Tegretol. Precautions: As with other drugs, avoid using during the first trimester of pregnancy if possible. Do not administer with, or within 14 days of MAOI therapy. It is suggested that serum folic acid levels be monitored during anticonvulsant therapy. In rats treated with carbamazepine for two years, incidence of tumours of the liver was found to be increased. There is, however, no evidence to indicate that this observation has any significant bearing on the therapeutic use of the drug. Side-effects: Dizziness, drowsiness, dry mouth, diarrhoea, nausea and vomiting. Idiosyncrasy may be manifested in the following ways – generalised erythematous rash, light-sensitive dermatitis, jaundice, leucopenia, aplastic anaemia, acute renal failure. It is suggested that the white cell count be checked in the early stages of treatment. Availability: White, unscored, compressed tablets, 7mm in diameter, impressed 'Geigy' on one side containing 100mg (PL0001/5027). £2.60 per 100. White, scored, compressed tablets, 9mm in diameter, impressed 'Geigy' on one side containing 200mg (PL0001/5028). £4.83 per 100. Syrup, white, caramel flavoured, containing 100mg per 5ml (PL0001/0050). £4.65 per 300ml bottle. Full prescribing information is available on request from Geigy Pharmaceuticals, Horsham, West Sussex.