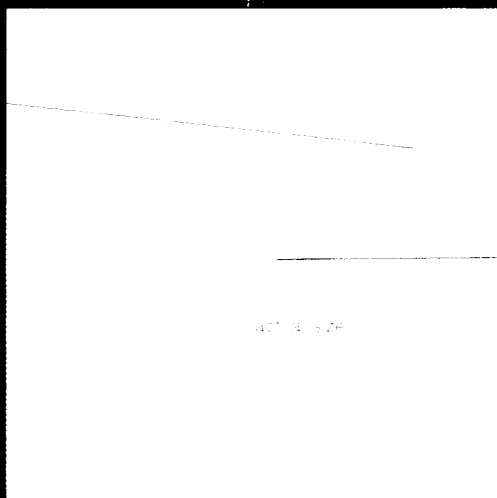


ANOTHER INNOVATION FROM JANSSEN IN THE TREATMENT OF VAGINAL THRUSH.

Rapid release of
active fungicidal
Gyno-Daktarin
emulsion coupled
with ...



... absorption of
discharge and no leakage
of medication.

Gyno-Daktarin^{*} tampons (miconazole)

Highly acceptable and effective short course therapy for
candidal vaginitis.



Also available : Gyno-Daktarin cream, ovules and pessaries.

N.B. Not all product forms available in all countries.

Further information available on request from :

JANSSEN PHARMACEUTICAL Ltd.  JANSSEN PHARMACEUTICA N.V.
Janssen House, Marlow, Bucks. SL7 1ET 2340 Beerse, Belgium

* Trademark

© Janssen Pharmaceutica 1980

PL 460/80

WHY NOT SUBSCRIBE TO THE SPECIALIST JOURNALS PUBLISHED BY THE BMA:—A SELECTION INCLUDES

Archives of Disease in Childhood, British Heart Journal, British Journal of Ophthalmology, Gut, Journal of Clinical Pathology & Journal of Neurology, Neurosurgery & Psychiatry.

FULL DETAILS OF SUBSCRIPTION RATES FROM BMA SPECIALIST PUBLICATIONS: BMA HOUSE, TAVISTOCK SQUARE, LONDON WC1H 9JR
TELEPHONE 01-387 4499 EXT. 309.

The Doctors' Sickness and Accident Plan

Most Doctors' can cope with short periods of sickness or injury – the financial problems arise when it stretches into weeks or months.

Under this plan you can take out as many annual units of £1,000 each as you feel appropriate, up to 15, provided that the total you insure for does not exceed 60% of your earned income, because under current tax practice, the income is paid to you tax free for at least the first year. In addition you will normally receive State benefits.

Furthermore, the benefit is paid regularly every month until you are fit for work, if necessary, up to retirement age of 65.

Our Sickness and Accident Plan comes into operation only after you have been unable to work for 4, 13 or 26 weeks. A quick glance at the table below shows what we mean, and it is up to you to decide how long a waiting period would suit you best.

Premiums are returned in respect of any period during which you are receiving a benefit under the Plan.

Cost for each year for every £1,000 worth of annual income to age 65*
(Maximum age at entry 54)

Age Next Birthday to age 24	Waiting Period		
	4 weeks	13 weeks	26 weeks
25-29	£11.30	£6.00	£4.40
30-34	£13.00	£7.90	£6.00
35-39	£15.20	£9.40	£7.20
40-44	£18.90	£11.80	£9.10
45-49	£25.70	£17.30	£13.80
50-54	£33.70	£23.10	£18.20
55-59	£46.50	£33.40	£26.50
60-64	£67.00	£49.90	£40.30
	£71.50	£51.40	£41.00

*Premiums for women are equally competitive.

For full details of this plan, please send the coupon below for our free explanatory leaflet. No postage stamp is needed if you use the FREEPOST address.



To:
**Medical
Insurance
Agency, Limited.,**
FREEPOST, B.M.A. House,
Tavistock Square,
London WC1H 9BR.

*Please send me full information about the
Doctors' Sickness & Accident Plan.*

BLOCK LETTERS PLEASE

Name _____

Address _____

Tel No. _____ BMJ 6/80

DRUG TREATMENT

Principles and practice of clinical pharmacology and therapeutics

Edited by Graeme S. Avery

1980 Second edition 1398 pages 150 illustrations 243 tables hardback £18.00

Written by an international team of eminent specialists, this unique, disease-orientated guide to modern drug therapy has been thoroughly revised and updated for this edition.

TOWARDS TEAM CARE

Edited by J. H. Barber and Charlotte R. Kratz

1980 172 pages illustrated paperback £3.95

As a unique model of team care, this book should be read by all involved in community medical, nursing and social work services.

THE E.C.G. MADE EASY

John R. Hampton

1980 Second edition 92 pages 74 illustrations £1.95

A guide to the users of the electrocardiogram, leading to more rapid identification and accurate interpretation of abnormal cardiac rhythms.

HAEMATOLOGICAL CYTOCHEMISTRY

F. G. J. Hayhoe and D. Quaglini

1980 332 pages 192 full colour plus 97 half-tone illustrations hardback £32.00

Extensively illustrated, this book fully describes the application of cytochemical methods to haemic cells, the results obtained and their significance.

Churchill Livingstone



Robert Stevenson House, 1-3 Baxter's Place, Leith Walk, Edinburgh EH1 3AF

Private Medical & Surgical Rehabilitation

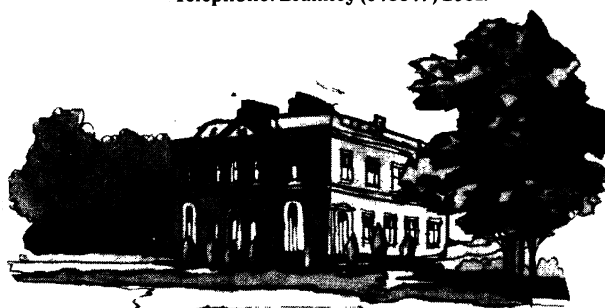
The Rehabilitation Unit at Unsted Park provides facilities for the intensive rehabilitation of patients of all ages. Treatment is carried out by a highly qualified, multi-disciplinary team under medical supervision, comprising physiotherapists, remedial gymnasts, occupational therapists, art therapist, speech therapist and nurses. The team is responsible for regular assessments of patients and for establishing individual treatment programmes.

Subscribers to the main Private Contributory Schemes may claim benefits within the terms of these schemes.

Further information is available from the Matron,

Unsted Park

Munstead Heath, Godalming, Surrey.
Telephone: Bramley (048647) 2061.



June Publications

SYMPTOMS AND SIGNS IN CLINICAL MEDICINE,

10th Edition (Chamberlain)

C. OGILVIE, M.D., F.R.C.P.

584 pages, 429 illustrations

ISBN 0 7236 0530 0

U.K. net price £14.00

STALLARD'S EYE SURGERY,

6th Edition

Edited by M. J. ROPER HALL, CH.M.(BIRM.), F.R.C.S.(ENG.)

916 pages, 781 illustrations

ISBN 0 7236 0515 7

U.K. net price £36.00

COMMON MEDICAL EMERGENCIES,

3rd Edition

R. H. SALTER, B.SC., M.B., B.S.(LOND.), F.R.C.P.

168 pages, 11 illustrations

ISBN 0 7236 0559 9

U.K. net price £3.50

To be published in July

METABOLIC AND NUTRITIONAL DISORDERS IN THE ELDERLY

Edited by F. I. CAIRD, D.M., F.R.C.P., and

A. N. EXTON-SMITH, F.R.C.P., M.R.C.S.

240 pages, 37 illustrations

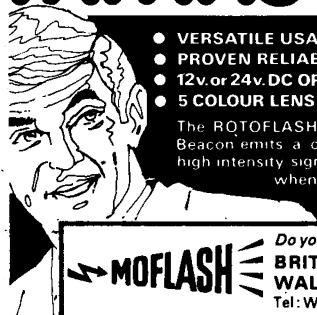
ISBN 0 7236 0537 8

U.K. net price £12.00

JOHN WRIGHT

44 Triangle West Bristol BS8 1EX

THE LIGHT FANTASTIC



- VERSATILE USAGE
- PROVEN RELIABILITY
- 12v. or 24v. DC OPERATION
- 5 COLOUR LENS CHOICE

The ROTOFLASH flashing Beacon emits a compelling high intensity signal of danger when hazardous conditions are likely to arise

MOFLASH

Do yourself a favour and get fuller details NOW!

**BRITISH LION WORKS, FOREST LANE,
WALSALL, WEST MIDLANDS WS2 7AX
Tel: Walsall 35616/7-27501 Telex: 337442 Safety G**

ADVERTISEMENTS

PHARMACEUTICAL PRODUCTS

Readers are reminded that prescribers' literature and clinical information are always available from advertisers on request.

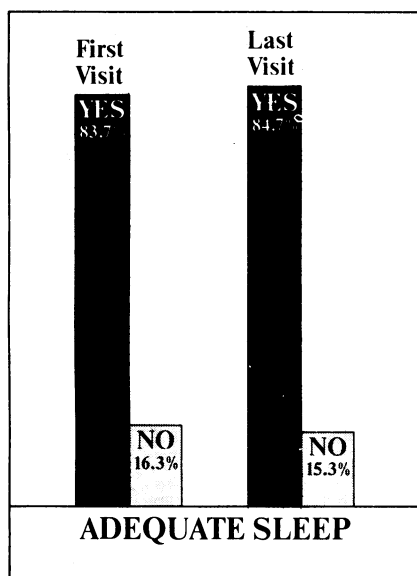
Halcion[®]

(triazolam)

3010 Patient UK Study

Treatment for Insomnia Under Monitored Release Study Protocol

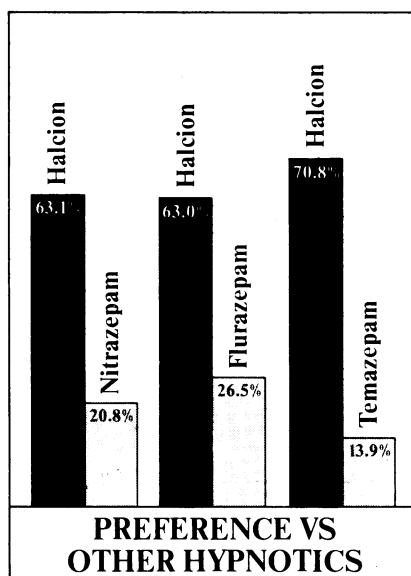
HALCION PERFORMANCE



Performance

Halcion was shown to be as effective at the end of therapy as at the beginning with an 85% level of efficacy, thus demonstrating no significant development of tolerance. 90% of 'new' patients found Halcion effective. Dosage recommendation was 0.25mg (normal adult dose) or 0.125mg (geriatric patients) taken at bedtime.

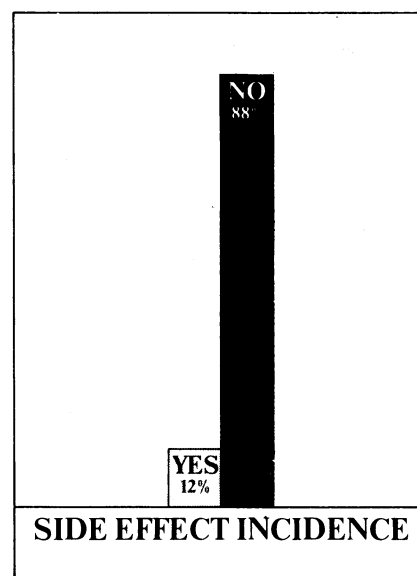
HALCION PREFERENCE



Preference

Of 1299 patients who took a hypnotic previously, 811 preferred Halcion. Halcion was significantly preferred to nitrazepam, flurazepam, temazepam and diazepam.

HALCION SAFETY



Safety

Halcion was well tolerated and side effects generally were not severe. Most commonly reported side effects included drowsiness 2.2%, headache 1.8% and dizziness 1.7%.

Prescribing Information: Indications: For treatment of insomnia including anxiety-induced insomnia. **Dosage and Administration:** Usual adult dose one 0.25mg tablet at bed-time. For geriatric patients initial dose is 0.125mg which may be increased to 0.25mg if necessary. Prolonged administration is not necessary or recommended. **Contraindication:** Known hypersensitivity to benzodiazepines. **Precautions, Warnings:** Concomitant administration with CNS depressants including alcohol may result in accentuation of their effect. Safety for use during pregnancy has not yet been established. Caution should be exercised in treating depressed patients. **Side Effects:** Drowsiness, dizziness, amnesia and impaired co-ordination may occur. Side effects are usually dose-related. **UK Availability:** 0.25mg powder blue tablets and 0.125mg lavender tablets in bottles of 100. **Product Licence Nos:** 0.25mg 0032/0058. 0.125mg 0032/0063. Information adapted from Triazolam Monitored Release Study (UK) January to September 1979. Data available from Upjohn Limited.



REGISTERED TRADEMARK: HALCION

UPJOHN LIMITED · CRAWLEY · WEST SUSSEX

Data Sheet available on request

1800 UK

These days, U.S. experts are taking care to recommend polyunsaturates.

1	Inter-Society Commission for Heart Disease Resources 1970. "Primary prevention of atherosclerotic diseases."	✓	4	American Medical Association Council on Foods and Nutrition 1972 "Diet and Coronary Heart Disease."	✓
2	American Health Foundation 1972 "Diet and Coronary Heart Disease."	✓	5	Select Committee on Nutrition and Human Needs 1977 "Dietary goals for the United States."	✓
3	White House Conference 1973 "Nutrition policies in the Seventies."	✓	6	American Heart Association Committee on Nutrition 1978 "Diet and Coronary Heart Disease."	✓

Six U.S. expert committees have now reported on diet and CHD.

All six recommend partial substitution of saturated fats by polyunsaturated fats.

The most recent report* advises that "the proportion of saturated fatty acids in the diet be brought into proper balance.

"To this end the levels of saturated fatty acids should be decreased to less than 10% of the total calories...

"Polyunsaturated fatty acids should supply up to 10% of the total calories, which can be accomplished easily."

Flora margarine is made with pure sunflower oil. It is higher in polyunsaturates than any other nationally available spread and the lowest in saturated fat.



**Flora-high in polyunsaturates.
The margarine that matters.**

*American Heart Association 1978. "Diet and coronary heart disease." General dietary recommendations - Section 2.

NATRILIX[®]

indapamide

a primary antihypertensive agent

Natrilix offers a simple, effective means of controlling blood pressure both in newly diagnosed and in poorly controlled patients with mild to moderate hypertension

Prescribing information

Presentation

Pink biconvex sugar-coated tablets each containing 2.5 mg indapamide hemihydrate.

Uses

For the treatment of hypertension.

Dosage and administration

Adults

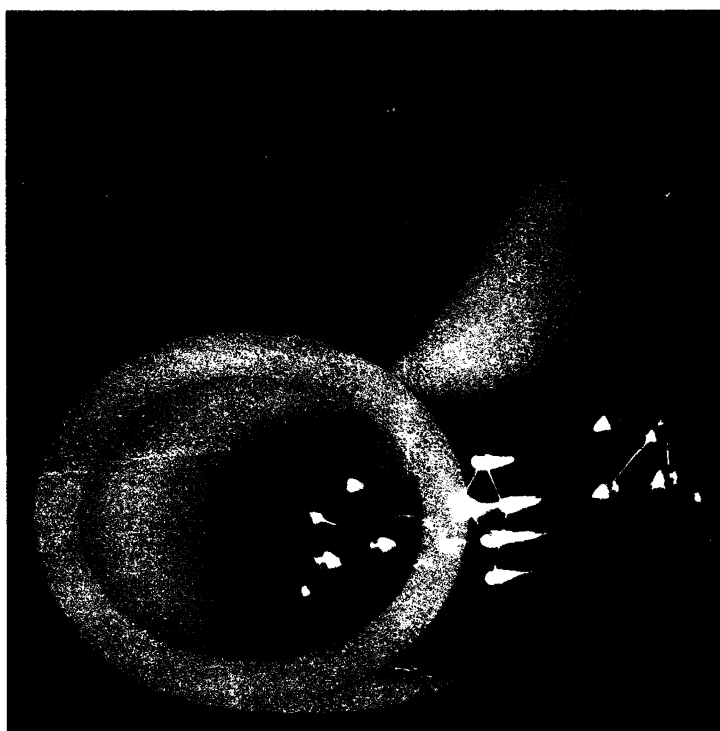
The dosage is one tablet daily to be taken in the morning.

Children

There is no experience of the use of this drug in children.

Contra-indications, warning, etc.

There are no absolute contra-indications to the use of Natrilix but caution should be exercised when prescribing it in cases of severe renal or hepatic impairment. As with all new drugs, the administration of Natrilix should be avoided during pregnancy although no teratological effects have been seen in animals. At doses higher than that recommended, Natrilix has a diuretic effect, therefore it is not recommended to prescribe it with a diuretic agent which may cause hypokalaemia. Also, slight weight loss has been reported in some patients taking Natrilix. Reported side effects have included nausea and headache,



but they are generally uncommon and mild in nature.

Serum urate levels may rise slightly but there is no evidence that glucose tolerance is adversely affected.

Box of 30 tablets.

Product licence number 0093/0022.

NATRILIX is available as:
FLUDEX[®] in Africa, Belgium, France, Holland, Portugal, Switzerland.
NATRILIX[®] in English speaking Countries of Africa, Brazil, Central America, Germany, Ireland, Italy, Middle East, South East Asia, United Kingdom.
TERTENSIF[®] in Spain.
NATRIX[®] in Korea.

Further information is available on request from
Servier Laboratories Ltd.,
Servier House, Horsenden Lane
South, Greenford, Middx.
UB6 7PW.



Les Laboratoires Servier,
22, rue Garnier - 92201 Neuilly -
France.

one tablet daily

WHY NOT SUBSCRIBE TO THE SPECIALIST JOURNALS PUBLISHED BY THE BMA:—A SELECTION INCLUDES

British Journal of Family Planning, Cardiovascular Research, Annals of the Royal College of Surgeons, Annals of Clinical Biochemistry.

FULL DETAILS OF SUBSCRIPTION RATES FROM BMA SPECIALIST PUBLICATIONS: BMA HOUSE, TAVISTOCK SQUARE, LONDON WC1H 9JR
TELEPHONE 01-387 4499 EXT. 309.



Out of the shadows of depression
and irrational fear with

Anafranil® 10mg
(clomipramine hydrochloride)

Geigy

Anafranil (clomipramine hydrochloride). **Dosage:** Depression – 30–50mg per day. In severe cases increase to 75mg or higher if necessary. Phobic/Obsessional States – usually higher dosage – build up to 100–150mg per day. **Contra-indications:** 1) Anafranil is contra-indicated in conjunction with, or within 14 days of treatment with a monoamine oxidase inhibitor. 2) In existing liver damage. 3) In cardiac/circulatory failure or following a recent myocardial infarction. **Precautions:** Caution is necessary in aortic heart disease, glaucoma, and retention of urine. Great caution in patients with epilepsy. Anafranil may antagonise the action of certain antihypertensive drugs, and potentiate the cardiovascular action of noradrenaline and adrenaline. As with other drugs, avoid using during the first trimester of pregnancy if possible. **Side effects:** Dry mouth, sweating, difficulty with accommodation, constipation, disturbance of micturition, tachycardia. Less commonly tremor, ataxia, orthostatic hypotension and vertigo. Rarely anxiety, agitation, fatigue, drowsiness, confusion, insomnia and headache. Epileptiform seizures have occurred in a small number of patients. Symptomless hyperthermia and allergic skin reactions are extremely rare. Interference with sexual function, particularly ejaculation, may be encountered. Agranulocytosis has occasionally occurred in patients on tricyclic antidepressants – routine blood counts are advised during treatment with Anafranil. **Availability:** Two-tone yellow/caramel capsules of 10mg (PL0001/0037) £3.10 per 100. Two-tone orange/caramel capsules of 25mg (PL0001/5000) £6.11 per 100. Two-tone blue/caramel capsules of 50mg (PL0001/0068) £11.63 per 100. Orange flavoured and coloured syrup containing 25mg of Anafranil in 5ml (PL0001/5001) £5.55 per 150ml bottle. Full prescribing information is available on request from Geigy Pharmaceuticals, Horsham, West Sussex.