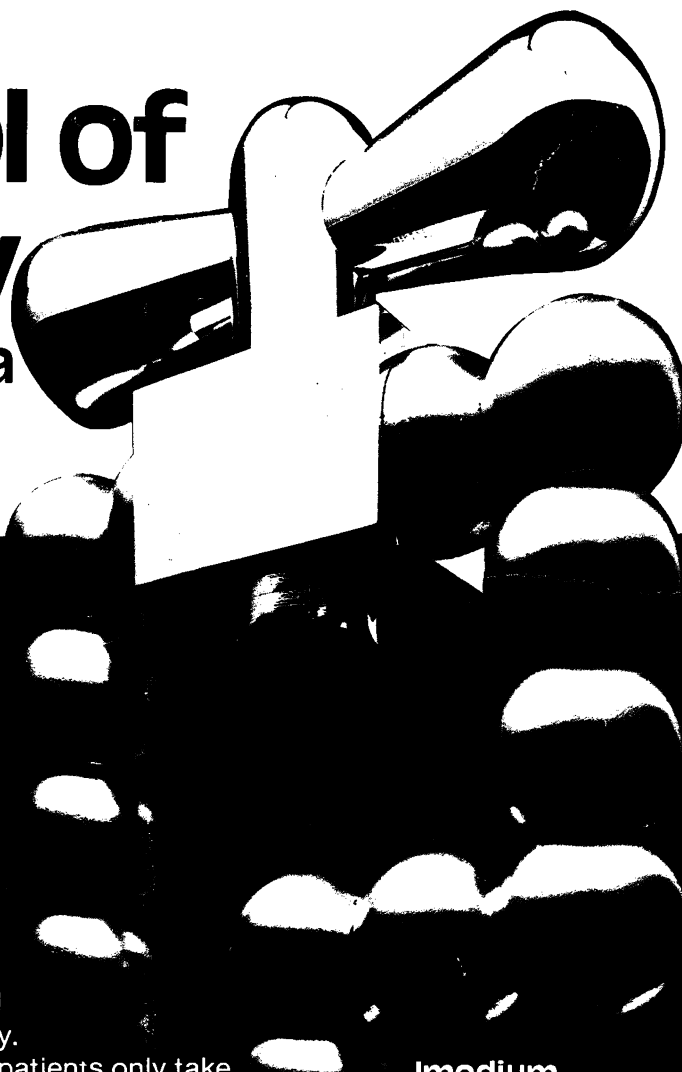


Imodium

TRADEMARK

(loperamide hydrochloride)

symbol of
accuracy
in acute diarrhoea



Imodium's specific action controls diarrhoea, relieving pain and abdominal cramps rapidly and effectively.

A tailored dosage regime means that patients only take Imodium when they really need it, minimising the risk of constipation and encouraging economy of medication. Patients will find Imodium capsules easy to take and the blister pack of just twelve capsules is convenient to carry throughout the working day.

Imodium
Simply Stops Diarrhoea - fast
2 // stat and 1 /
at each loose stool

Further information is available from :



JANSSEN PHARMACEUTICA
2340 Beerse, Belgium

or

JANSSEN PHARMACEUTICAL LTD.
Marlow, Bucks. SL7 1ET.

Presentation :

Hard gelatin capsules containing 2 mg loperamide hydrochloride and syrup containing 1 mg loperamide hydrochloride per 5 ml.

Indications :

Imodium* is indicated for the symptomatic control of acute diarrhoea of any aetiology.

Contra-indications and warnings etc. :

There are no specific contraindications to Imodium*. Studies in animals have shown no abnormal teratogenic effects; however the use of loperamide during pregnancy is subject to the usual precautions. In trials, no side effects have been reported that can reliably be distinguished from the symptoms of the gastro-intestinal disorder being treated. As persistent diarrhoea can be an indicator of potentially more serious conditions, Imodium* should not be used for prolonged periods until the underlying cause of the diarrhoea has been investigated.

Dosage and Administration :

Acute Diarrhoea - Adults : Two capsules initially, followed by one capsule after every loose stool. The usual dosage is 3 to 4 capsules a day; the maximum daily dose should not exceed 8 capsules. **Children :** 4 to 8 years : Syrup 5 ml four times daily until diarrhoea is controlled. In children under 8 years, further investigation may be necessary if diarrhoea has not responded to three days' treatment. 9 to 12 years : Syrup 10 ml (or 1 capsule) four times daily until diarrhoea is controlled.

Basic NHS Cost :

12 capsules (ex 250 pack) 104p. (correct at time of printing)

Product Licence Numbers :

Capsules 0242/0028 - Syrup 0242/0040

© JPL/037/80

* Trademark

THE HANDBOOK OF MEDICAL ETHICS

This handbook sets out the broad framework of ethics within which the medical profession works. Recent changes and pressures have increased the number and complexity of the ethical problems brought to the BMA, many of which present difficult choices between courses of action.

Extensively reviewed on television, and widely publicised by all the national newspapers, send for your personal copy of *The Handbook of Medical Ethics*, which highlights ethical dilemmas as well as guidance.

Price: Inland £3.00; Abroad US \$11.00

Concessionary price to BMA Members: Inland £1.00; Abroad US \$6.50

(When ordering BMA Members must quote their membership number)

All prices include postage. Copies sent abroad are despatched by air mail.

Payment must be enclosed with order or a surcharge of 50p will be made for rendering invoices and statements.

ORDER YOUR COPY FROM —

The Publishing Department, British Medical Association, BMA House,
Tavistock Square, London WC1H 9JR.

Examination Candidates

Revise with Success
use **PASTEST PRACTICE EXAMS**

**MRCP I & II MRCGP FRCS
PLAB (UK entry exam) MRCOG**

Write for details: Dept J, PasTest Service,
P.O. Box 81,
Hemel Hempstead,
Herts, U.K.
Tel: (0442) 52113

PASTEST

ADVERTISEMENTS

PHARMACEUTICAL PRODUCTS

Readers are reminded that prescribers' literature and clinical information are always available from advertisers on request.

THE BRITISH JOURNAL OF FAMILY PLANNING

The Official Journal of the
National Association of Family Planning Doctors

CO-EDITORS: Dr. Ruth Skrine and Dr. Mary Pollock

The British Journal of Family Planning is a quarterly journal which publishes original papers and review articles by leading authorities on a wide range of relevant subjects. Clinical meetings are reported, and papers of particular interest are often published in full. Each issue contains notices of training courses and future meetings, reviews of important publications and a lively correspondence section. There is often a column contributed by the Institute of Psycho-Sexual Medicine.

The journal serves as a channel of communication between the council of the National Association of Family Planning Doctors and the members. These include doctors working in hospitals, general practice and N.H.S. and private clinics. Consultants from many of the medical specialities are among the membership which now totals nearly 2,000 and is growing rapidly. Health authorities and postgraduate medical centres are subscribing to the journal in increasing numbers.

The journal is published in January, April, July and October.

**Annual Subscription: Inland £12.00
Overseas US \$30.00**

Order from Professional & Scientific Publications,
Tavistock House East, Tavistock Square, London WC1H 9JR
or through any leading subscription agent.

Today's antibacterial



Success 9 times out of ten in chest infections would be hard to beat. It is this order of success, confirmed in worldwide clinical studies involving over 8,500 patients, that has helped thousands of doctors to decide that Septrin[®] is today's antibacterial. With over 2,500 published reports and more than 250 million prescriptions written worldwide, is it any wonder that Septrin is Britain's No. 1 branded antibacterial?

PRESCRIBING INFORMATION

Indications Sensitive bacterial infections of the lower respiratory, urinary and genital tracts, sinusitis, otitis media, skin infections, septicæmia, typhoid and paratyphoid fevers, and other infections caused by sensitive organisms.

Dosage Septrin Forte Tablets. Adults and children over 12 years: 1 forte tablet twice daily. Maximum dosage for particularly severe infections 1½ forte tablets twice daily. In acute infections Septrin should be given for a minimum of 5 days or until the patient has been symptom-free for 2 days.

Contra-indications Septrin is contra-indicated in patients with marked liver parenchymal damage, blood dyscrasias or severe renal insufficiency. Septrin should not be given to patients hypersensitive to sulphonamides or co-trimoxazole; should not be given during pregnancy or to neonates.

Precautions In cases of renal impairment a reduced dosage is indicated and an adequate urinary output should be maintained. Regular blood counts are necessary whenever long-term therapy is used. Caution is advised in patients with folate deficiency. Care should be taken when giving Septrin to patients receiving oral anticoagulants of the coumarin group, pyrimethamine or sulphonylureas.

Adverse Reactions Occasionally, nausea, vomiting, glossitis and skin rashes may occur with normal doses and, very rarely, haematological reactions.

Presentation Septrin Forte Tablets each contain 160mg Trimethoprim B.P. and 800mg Sulphamethoxazole B.P.

Basic NHS cost: £1.34 for 10. PL3/0121



RESEARCH IS OUR ONLY SHAREHOLDER

Additional information is available on request.
Wellcome Medical Division
The Wellcome Foundation Ltd., Crewe, Cheshire

**Septrin
Forte**
CO-TRIMOXAZOLE BP WELLCOME
a successful first choice
in chest infections

*Trade Mark.

THE FIRST YEAR OF LIFE

Recent research has vastly improved our understanding of a child's development in the first year of life.

In particular, assessment of normal progress is now much more systematic, so that deviations from the normal are recognised earlier

Dr. Bernard Valman's illustrated account of current methods of examination, assessment and management of the medical problems of early infancy will prove invaluable to all concerned with small babies.

The articles have now been collected into book form in exactly the same format as they appeared in the BMJ.

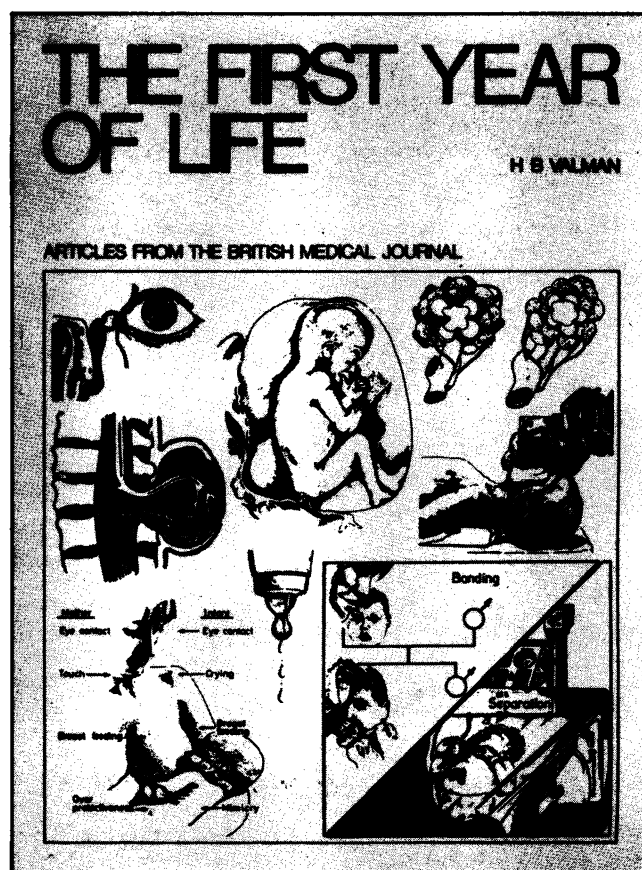
Price: Inland £5.00;

Overseas US\$12.50

(Inland £4.50;

Overseas US\$11.25 for BMA members)

Order your copy now
From: The Publisher,
British Medical Journal,
BMA House,
Tavistock Square,
London WC1H 9JR
or any leading bookseller



NATRILIX®

indapamide

a primary antihypertensive agent

Natrilix offers a simple, effective means of controlling blood pressure both in newly diagnosed and in poorly controlled patients with mild to moderate hypertension

Prescribing information

Presentation

Pink biconvex sugar-coated tablets each containing 2.5 mg indapamide hemihydrate.

Uses

For the treatment of hypertension.

Dosage and administration

Adults

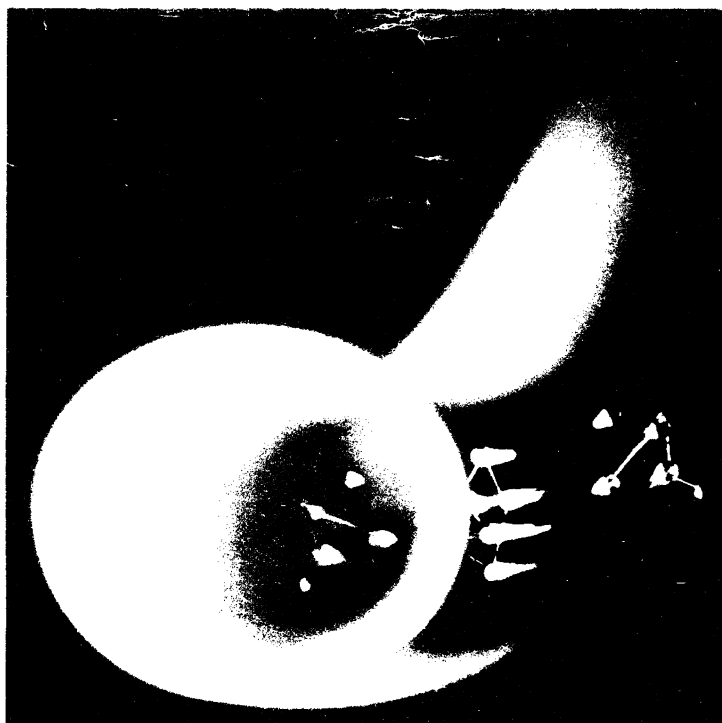
The dosage is one tablet daily to be taken in the morning.

Children

There is no experience of the use of this drug in children.

Contra-indications, warning, etc.

There are no absolute contra-indications to the use of Natrilix but caution should be exercised when prescribing it in cases of severe renal or hepatic impairment. As with all new drugs, the administration of Natrilix should be avoided during pregnancy although no teratological effects have been seen in animals. At doses higher than that recommended, Natrilix has a diuretic effect, therefore it is not recommended to prescribe it with a diuretic agent which may cause hypokalaemia. Also, slight weight loss has been reported in some patients taking Natrilix. Reported side effects have included nausea and headache,



but they are generally uncommon and mild in nature.

Serum urate levels may rise slightly but there is no evidence that glucose tolerance is adversely affected.

Box of 30 tablets.

Product licence number 0093/0022.

NATRILIX is available as:
FLUDEX® in Africa, Belgium, France, Holland, Portugal, Switzerland.
NATRILIX® in English speaking Countries of Africa, Brazil, Central America, Germany, Ireland, Italy, Middle East, South East Asia, United Kingdom.
TERTENSIF® in Spain.
NATRIX® in Korea.

Further information is available on request from
Servier Laboratories Ltd.,
Servier House, Horsenden Lane
South, Greenford, Middx.
UB6 7PW.



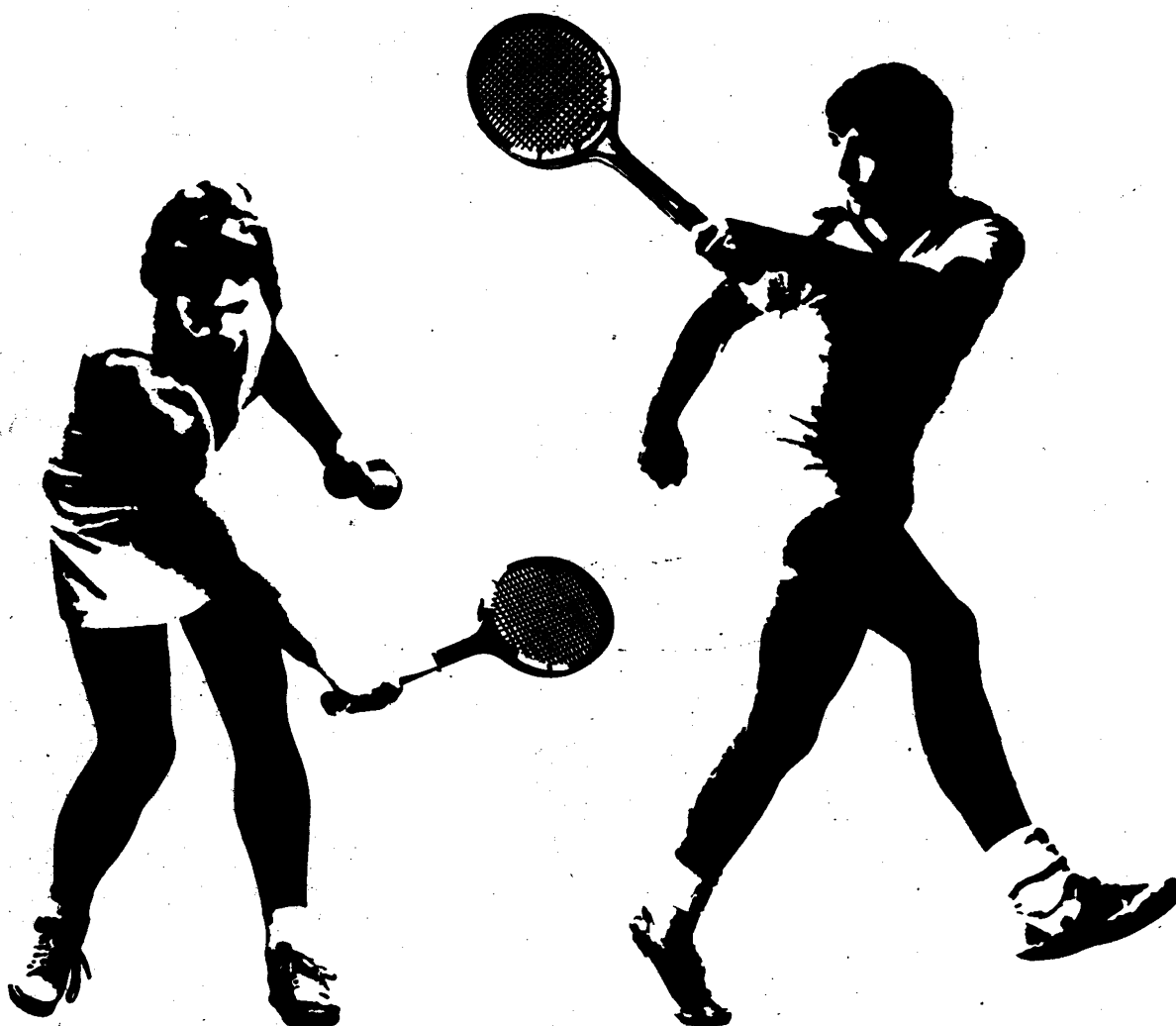
Les Laboratoires Servier,
22, rue Garnier - 92201 Neuilly -
France.

one tablet daily

WHY NOT SUBSCRIBE TO THE SPECIALIST JOURNALS PUBLISHED BY THE BMA:—A SELECTION INCLUDES

Annals of the Rheumatic Diseases, British Journal of Venereal Diseases, Thorax, Journal of Epidemiology and Community Health, British Journal of Industrial Medicine.

FULL DETAILS OF SUBSCRIPTION RATES FROM BMA SPECIALIST PUBLICATIONS: BMA HOUSE, TAVISTOCK SQUARE, LONDON WC1H 9JR
TELEPHONE 01-387 4499 EXT. 309.



LOPRESORETIC[®]

metoprolol tartrate and chlorthalidone BP

FOR HYPERTENSION

Presentation Off-white, round, film-coated tablets containing 100mg metoprolol tartrate and 12.5mg chlorthalidone BP. **Indications** Mild and moderate hypertension. **Dosage** Initially two tablets in the morning, occasionally it may be beneficial to raise the dosage to three or four tablets daily given in single or divided doses. **Contra-indications** Atrioventricular block of second or third degree, marked bradycardia, cardiogenic shock, uncontrolled heart failure, marked renal insufficiency, lithium therapy. **Side-effects** Lopresoretic is well tolerated with a low incidence and severity of side-effects. However, slight gastro-intestinal discomfort, sleep disturbances, nausea, dizziness and bradycardia may occasionally occur. There have been a few reports of skin rashes and/or dry eyes associated with the use of beta-adrenoceptor blocking drugs. Usually the symptoms clear on withdrawal of treatment. Chlorthalidone may cause latent gout or latent diabetes to become manifest; a few cases of allergic skin reactions, mild anorexia, nausea, constipation and diarrhoea have been reported and, rarely, thrombocytopenia and leucopenia. **Precautions** Although Lopresoretic contains a selective beta-blocker caution should be observed when treating patients with chronic obstructive pulmonary disease and impaired carbohydrate metabolism. Patients with cardiac failure must be effectively digitalised. Caution in patients with renal failure, metabolic acidosis or those undergoing surgery. Cessation of therapy with a beta-blocker should be gradual. As with all drugs Lopresoretic should only be used during pregnancy if there are compelling reasons. **Packs** Lopresoretic (PL 0001/0085) Calendar packs of 56 tablets £7.44. Further information is available on request from Geigy Pharmaceuticals, Horsham, West Sussex.

GEIGY