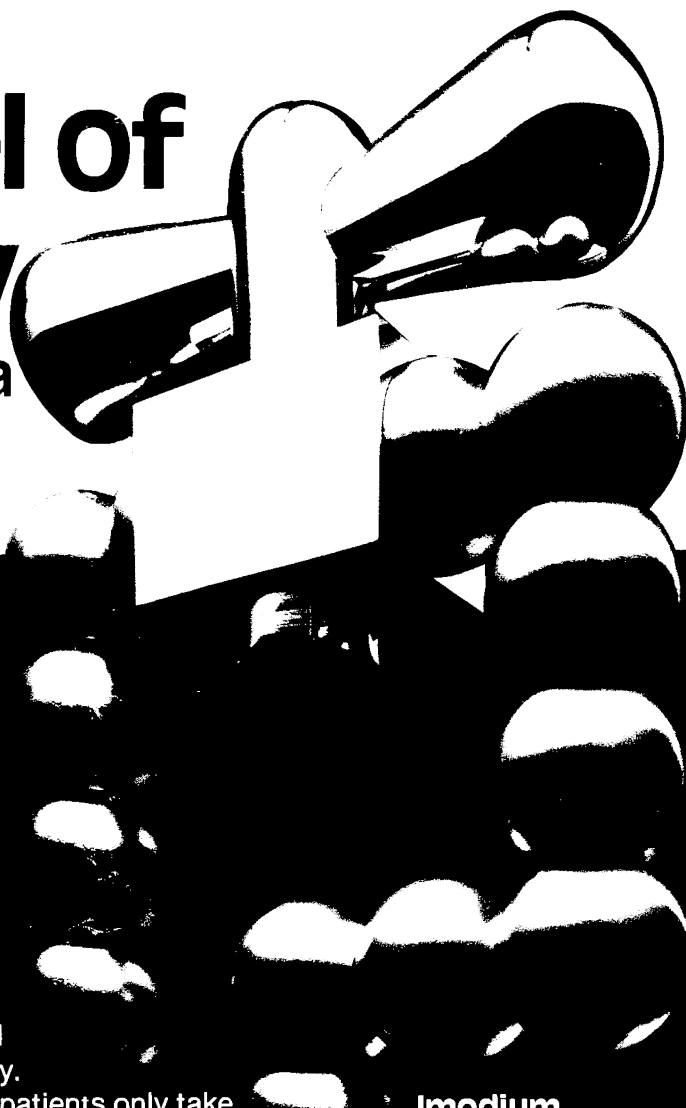


Imodium

TRADE MARK

(loperamide hydrochloride)

**symbol of
accuracy**
in acute diarrhoea



Imodium's specific action
controls diarrhoea, relieving pain and
abdominal cramps rapidly and effectively.

A tailored dosage regime means that patients only take
Imodium when they really need it, minimising the risk of
constipation and encouraging economy of medication.
Patients will find Imodium capsules easy to take and the blister
pack of just twelve capsules is convenient to carry throughout
the working day.

Imodium
Simply Stops Diarrhoea-fast
2 // stat and 1 //
at each loose stool

Further information is available from :



JANSSEN PHARMACEUTICA
2340 Beerse, Belgium

or

JANSSEN PHARMACEUTICAL LTD.
Marlow, Bucks. SL7 1ET.

Presentation :

Hard gelatin capsules containing 2 mg loperamide hydrochloride and syrup containing 1 mg loperamide hydrochloride per 5 ml.

Indications :

Imodium* is indicated for the symptomatic control of acute diarrhoea of any aetiology.

Contra-indications and warnings etc. :

There are no specific contraindications to Imodium*. Studies in animals have shown no abnormal teratogenic effects, however the use of loperamide during pregnancy is subject to the usual precautions. In trials, no side effects have been reported that can reliably be distinguished from the symptoms of the gastro-intestinal disorder being treated. As persistent diarrhoea can be an indicator of potentially more serious conditions, Imodium* should not be used for prolonged periods until the underlying cause of the diarrhoea has been investigated.

Dosage and Administration :

Acute Diarrhoea : Adults : Two capsules initially, followed by one capsule after every loose stool. The usual dosage is 3 to 4 capsules a day; the maximum daily dose should not exceed 8 capsules. **Children :** 4 to 8 years : Syrup 5 ml four times daily until diarrhoea is controlled. In children under 8 years, further investigation may be necessary if diarrhoea has not responded to three days' treatment. 9 to 12 years : Syrup 10 ml (or 1 capsule) four times daily until diarrhoea is controlled.

Basic NHS Cost :

12 capsules (ex 250 pack) 104p. (correct at time of printing)

Product Licence Numbers :

Capsules 0242/0028 - Syrup 0242/0040

JPL/037/80

* trademark

The combination of
simple language and straightforward
line drawings has made the

ABC OF OPHTHALMOLOGY

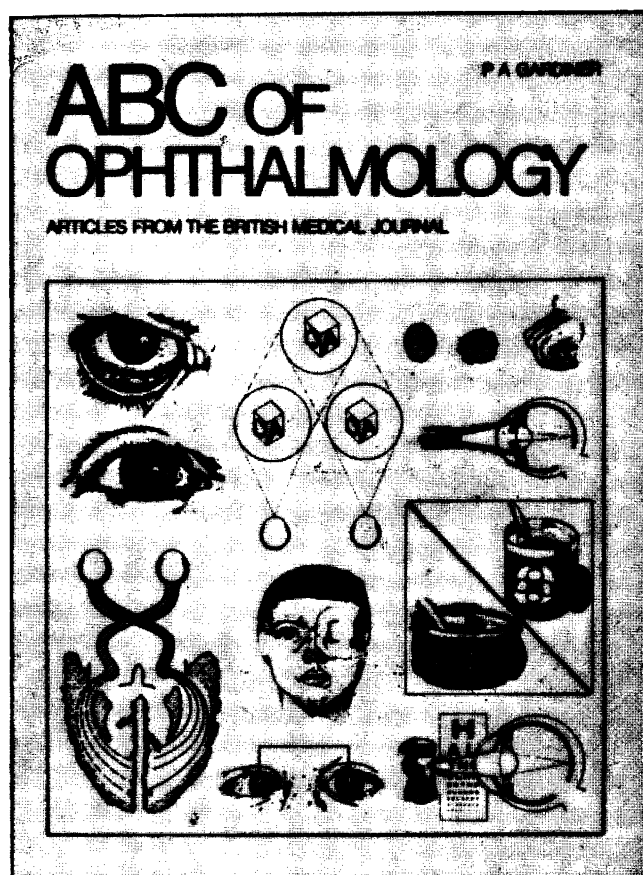
one of the most popular series
of articles in the Medical Practice section
of the British Medical Journal.

All the common problems are covered -
visual defects, squints, glaucoma and
cataracts - together with detailed
instruction on examination, diagnosis
and management.

The articles
have now been
collected into book
form - in exactly
the same format
as they appeared in
the BMJ -
price: Inland £2.50;
Overseas US\$6.25
(Inland £2.00;
Overseas US\$5.00
for BMA members).

AVAILABLE NOW

Order your copy now
From: The Publisher,
British Medical Journal,
BMA House,
Tavistock Square,
London WC1H 9JR
or any leading bookseller



Today's antibacterial



Success 9 times out of ten in chest infections would be hard to beat. It is this order of success, confirmed in worldwide clinical studies involving over 8,500 patients, that has helped thousands of doctors to decide that **Septtrin**[®] is today's antibacterial. With over 2,500 published reports and more than 250 million prescriptions written worldwide, is it any wonder that **Septtrin** is Britain's No. 1 branded antibacterial?

PRESCRIBING INFORMATION

Indications Sensitive bacterial infections of the lower respiratory, urinary and genital tracts, sinusitis, otitis media, skin infections, septicaemia, typhoid and paratyphoid fevers, and other infections caused by sensitive organisms.

Dosage **Septtrin Forte** Tablets. Adults and children over 12 years: 1 forte tablet twice daily. Maximum dosage for particularly severe infections 1½ forte tablets twice daily. In acute infections **Septtrin** should be given for a minimum of 5 days or until the patient has been symptom-free for 2 days.

Contra-indications **Septtrin** is contra-indicated in patients with marked liver parenchymal damage, blood dyscrasias or severe renal insufficiency. **Septtrin** should not be given to patients hypersensitive to sulphonamides or co-trimoxazole; should not be given during pregnancy or to neonates.

Precautions In cases of renal impairment a reduced dosage is indicated and an adequate urinary output should be maintained. Regular blood counts are necessary whenever long-term therapy is used. Caution is advised in patients with folate deficiency. Care should be taken when giving **Septtrin** to patients receiving oral anticoagulants of the coumarin group, pyrimethamine or sulphonylureas.

Adverse Reactions Occasionally, nausea, vomiting, glossitis and skin rashes may occur with normal doses and, very rarely, haematological reactions.

Presentation **Septtrin Forte** Tablets each contain 160mg Trimethoprim B.P. and 800mg Sulphamethoxazole B.P. Basic NHS cost: £1.34 for 10. PL3/0121



RESEARCH IS OUR ONLY SHAREHOLDER

Additional information is available on request.
Wellcome Medical Division
The Wellcome Foundation Ltd., Crewe, Cheshire

Septtrin Forte

CO-TRIMOXAZOLE BP WELLCOME

a successful first choice
in chest infections

^{*}Trade Mark.

TODAY'S TREATMENT/3

Diseases of the respiratory and urinary systems account for a high proportion of all consultations in general practice, justifying the 200 pages devoted to them in the third volume of Today's Treatment. The remaining section deals with the use of antibiotics across the whole spectrum of medicine, looking at the advantages and drawbacks of the major categories and their use in clinical settings where decision-making may be difficult. Like its predecessors, Today's Treatment/3 concentrates on practical issues and provides the busy clinician with the information he needs in his day to day practice.

Price: Inland £5.50;
Abroad US\$13.75

(Concessionary price to BMA members:
Inland £5.00; Abroad US\$12.50.

When ordering BMA members must quote their membership number or the full price will be applicable.)

Complete your collection of this series by ordering copies of Today's Treatment 1 and 2 at the combined reduced rate of Inland £6.00; Abroad US\$15.00 thereby saving 25% of the full price.

Order your copies now from

The Publisher,
BRITISH MEDICAL JOURNAL,
BMA House,
Tavistock Square,
London WC1H 9JR

or through any leading bookseller



NATRILIX®

indapamide

a primary antihypertensive agent

Natrilix offers a simple, effective means of controlling blood pressure both in newly diagnosed and in poorly controlled patients with mild to moderate hypertension

Prescribing information

Presentation

Pink biconvex sugar-coated tablets each containing 2.5 mg indapamide hemihydrate.

Uses

For the treatment of hypertension.

Dosage and administration

Adults

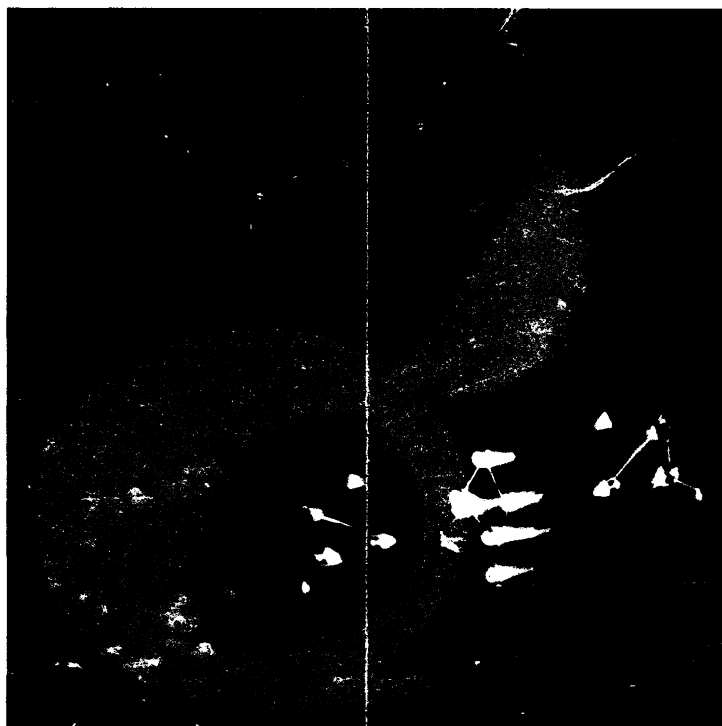
The dosage is one tablet daily to be taken in the morning.

Children

There is no experience of the use of this drug in children.

Contra-indications, warning, etc.

There are no absolute contra-indications to the use of Natrilix but caution should be exercised when prescribing it in cases of severe renal or hepatic impairment. As with all new drugs, the administration of Natrilix should be avoided during pregnancy although no teratological effects have been seen in animals. At doses higher than that recommended, Natrilix has a diuretic effect, therefore it is not recommended to prescribe it with a diuretic agent which may cause hypokalaemia. Also, slight weight loss has been reported in some patients taking Natrilix. Reported side effects have included nausea and headache,



but they are generally uncommon and mild in nature.

Serum urate levels may rise slightly but there is no evidence that glucose tolerance is adversely affected.

Box of 30 tablets.

Product licence number 0093/0022.

NATRILIX is available as: FLUDEX® in Africa, Belgium, France, Holland, Portugal, Switzerland.

NATRILIX® in English speaking Countries of Africa, Brazil, Central America, Germany, Ireland, Italy, Middle East, South East Asia, United Kingdom.

TERTENSIF® in Spain.

NATRIX® in Korea.

Further information is available on request from Servier Laboratories Ltd., Servier House, Horsenden Lane South, Greenford, Middx. UB6 7PW.



Les Laboratoires Servier, 22, rue Garnier - 92201 Neuilly - France.

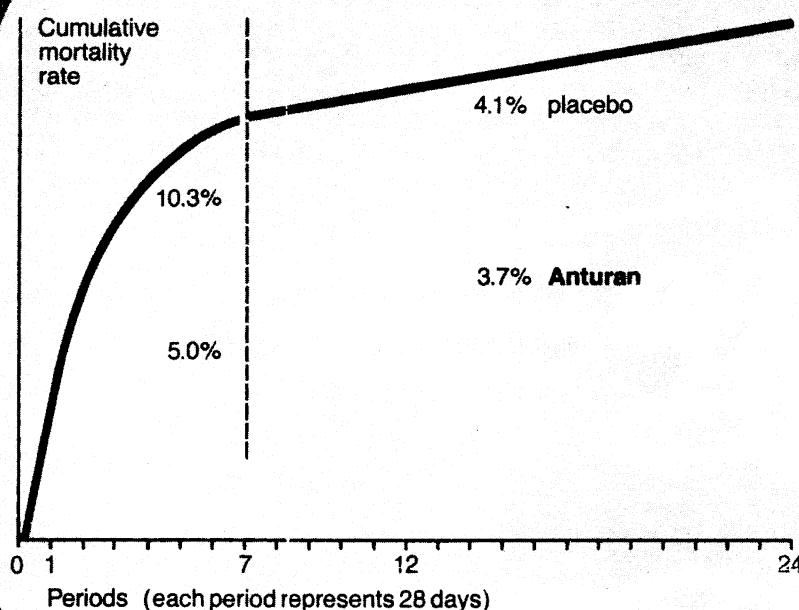
one tablet daily

WHY NOT SUBSCRIBE TO THE SPECIALIST JOURNALS PUBLISHED BY THE BMA:—A SELECTION INCLUDES

Annals of the Rheumatic Diseases, British Journal of Venereal Diseases, Thorax, Journal of Epidemiology and Community Health, British Journal of Industrial Medicine.

FULL DETAILS OF SUBSCRIPTION RATES FROM BMA SPECIALIST PUBLICATIONS: BMA HOUSE, TAVISTOCK SQUARE, LONDON WC1H 9JR
TELEPHONE 01-387 4499 EXT. 309.

Geigy



anturan[®]
200

Now calendar packed

**reduces
cardiac mortality
following recent
myocardial infarction**