

# NATRILIX<sup>®</sup>

indapamide

## a primary antihypertensive agent

Natrilix offers a simple, effective means of controlling blood pressure both in newly diagnosed and in poorly controlled patients with mild to moderate hypertension

### Prescribing information

#### Presentation

Pink biconvex sugar-coated tablets each containing 2.5 mg indapamide hemihydrate.

#### Uses

For the treatment of hypertension.

#### Dosage and administration

##### Adults

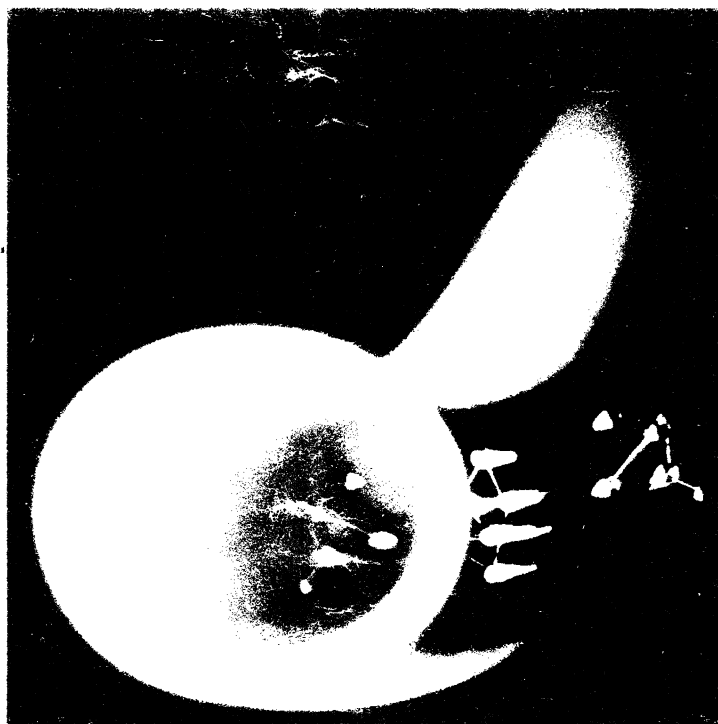
The dosage is one tablet daily to be taken in the morning.

##### Children

There is no experience of the use of this drug in children.

#### Contra-indications, warning, etc.

There are no absolute contra-indications to the use of Natrilix but caution should be exercised when prescribing it in cases of severe renal or hepatic impairment. As with all new drugs, the administration of Natrilix should be avoided during pregnancy although no teratological effects have been seen in animals. At doses higher than that recommended, Natrilix has a diuretic effect, therefore it is not recommended to prescribe it with a diuretic agent which may cause hypokalaemia. Also, slight weight loss has been reported in some patients taking Natrilix. Reported side effects have included nausea and headache,



but they are generally uncommon and mild in nature.

Serum urate levels may rise slightly but there is no evidence that glucose tolerance is adversely affected.

Box of 30 tablets.

Product licence number 0093/0022.

NATRILIX is available as: FLUDEX<sup>®</sup> in Africa, Belgium, France, Holland, Portugal, Switzerland.

NATRILIX<sup>®</sup> in English speaking Countries of Africa, Brazil, Central America, Germany, Ireland, Italy, Middle East, South East Asia, United Kingdom.

TERTENSIF<sup>®</sup> in Spain.

NATRIX<sup>®</sup> in Korea.

Further information is available on request from Servier Laboratories Ltd., Servier House, Horsenden Lane South, Greenford, Middx. UB6 7PW.



Les Laboratoires Servier, 22, rue Garnier - 92201 Neuilly - France.

## one tablet daily

### WHY NOT SUBSCRIBE TO THE SPECIALIST JOURNALS PUBLISHED BY THE BMA:—A SELECTION INCLUDES

Annals of the Rheumatic Diseases, British Journal of Venereal Diseases, Thorax, Journal of Epidemiology and Community Health, British Journal of Industrial Medicine.

FULL DETAILS OF SUBSCRIPTION RATES FROM BMA SPECIALIST PUBLICATIONS: BMA HOUSE, TAVISTOCK SQUARE, LONDON WC1H 9JR  
TELEPHONE 01-387 4499 EXT. 309.

*Just published*

# ABC OF EAR NOSE AND THROAT

Diseases of the ear, nose and throat account for a substantial proportion of all consultations in general practice; they cause time off work and, particularly in children, a great deal of misery and discomfort.

Mr. Harold Ludman's illustrated articles on the common problems of ENT provide the busy clinician with a practical and reliable guide to their assessment and management.

These articles have been collected together in book form in the same format as they appeared in the BMJ.

Price: Inland £3.50;

Overseas US\$16.00\*

(Inland £3.00;

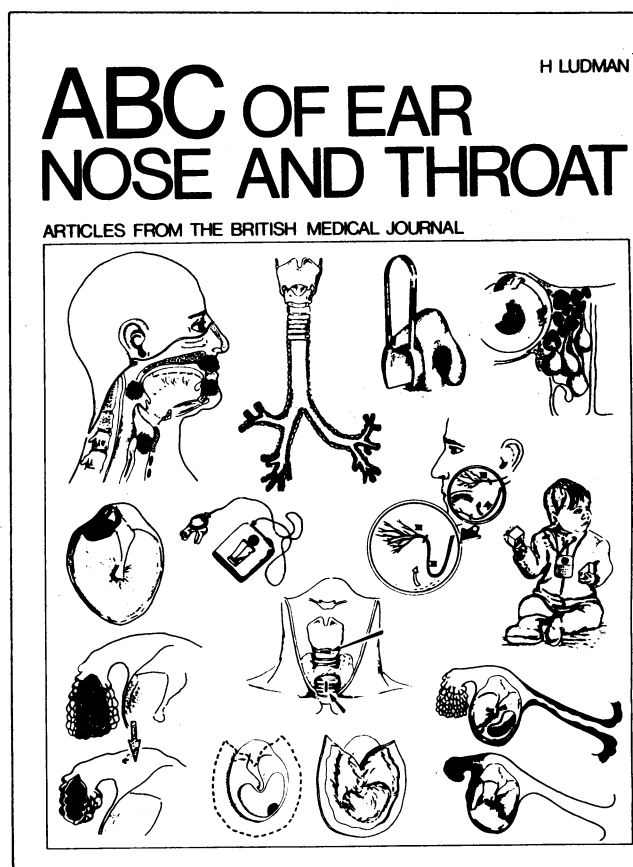
Overseas US\$14.50\* for BMA members)

*\*including air mail postage*

**Order your copy now**

From: The Publisher,  
British Medical Journal,  
BMA House,  
Tavistock Square,  
London WC1H 9JR

*or any leading bookseller*



# Today's antibacterial



Success 9 times out of ten in chest infections would be hard to beat. It is this order of success, confirmed in worldwide clinical studies involving over 8,500 patients, that has helped thousands of doctors to decide that Septin is today's antibacterial. With over 2,500 published reports and more than 250 million prescriptions written worldwide, is it any wonder that Septin is Britain's No. 1 branded antibacterial?

#### PRESCRIBING INFORMATION

**Indications** Sensitive bacterial infections of the lower respiratory, urinary and genital tracts, sinusitis, otitis media, skin infections, septicaemia, typhoid and paratyphoid fevers, and other infections caused by sensitive organisms.

**Dosage** Septin Forte Tablets. Adults and children over 12 years: 1 forte tablet twice daily. Maximum dosage for particularly severe infections 1½ forte tablets twice daily. In acute infections Septin should be given for a minimum of 5 days or until the patient has been symptom-free for 2 days.

**Contra-indications** Septin is contra-indicated in patients with marked liver parenchymal damage, blood dyscrasias or severe renal insufficiency. Septin should not be given to patients hypersensitive to sulphonamides or co-trimoxazole; should not be given during pregnancy or to neonates.

**Precautions** In cases of renal impairment a reduced dosage is indicated and an adequate urinary output should be maintained. Regular blood counts are necessary whenever long-term therapy is used. Caution is advised in patients with folate deficiency. Care should be taken when giving Septin to patients receiving oral anticoagulants of the coumarin group, pyrimethamine or sulphonylureas.

**Adverse Reactions** Occasionally, nausea, vomiting, glossitis and skin rashes may occur with normal doses and, very rarely, haematological reactions.

**Presentation** Septin Forte Tablets each contain 160mg Trimethoprim B.P. and 800mg Sulphamethoxazole B.P.

PL3/0121



RESEARCH IS OUR ONLY SHAREHOLDER

Further information is available on request.

Wellcome Medical Division

The Wellcome Foundation Ltd., Crewe, Cheshire

## Septin<sup>\*</sup> CO-TRIMOXAZOLE Forte

a successful first choice  
in chest infections

\*Trade Mark

*Just published*

# ABC OF HYPERTENSION

Hypertension is a common disorder that is easily detected. But it may be deceptively simple: the measurement of blood pressure, interpretation of the results, and the decisions that follow need to be based on a comprehensive knowledge of recent advances.

These illustrated articles on blood pressure measurement, reduction and management have now been collected together in the same format as they appeared in the BMJ to provide a practical guide for general practitioners and others concerned with hypertension.

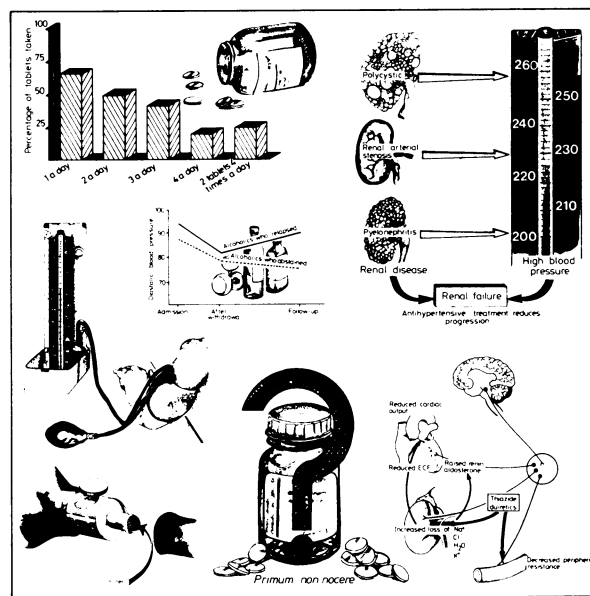
Price: Inland £3.50;  
Overseas US\$16.00\*  
(Inland £3.00;  
Overseas US\$14.50\* for  
BMA members)

*\*including air mail postage*

**Order your copy now**  
From: The Publisher,  
British Medical Journal,  
BMA House,  
Tavistock Square,  
London WC1H 9JR  
or any leading bookseller

## ABC OF HYPERTENSION

ARTICLES FROM THE BRITISH MEDICAL JOURNAL

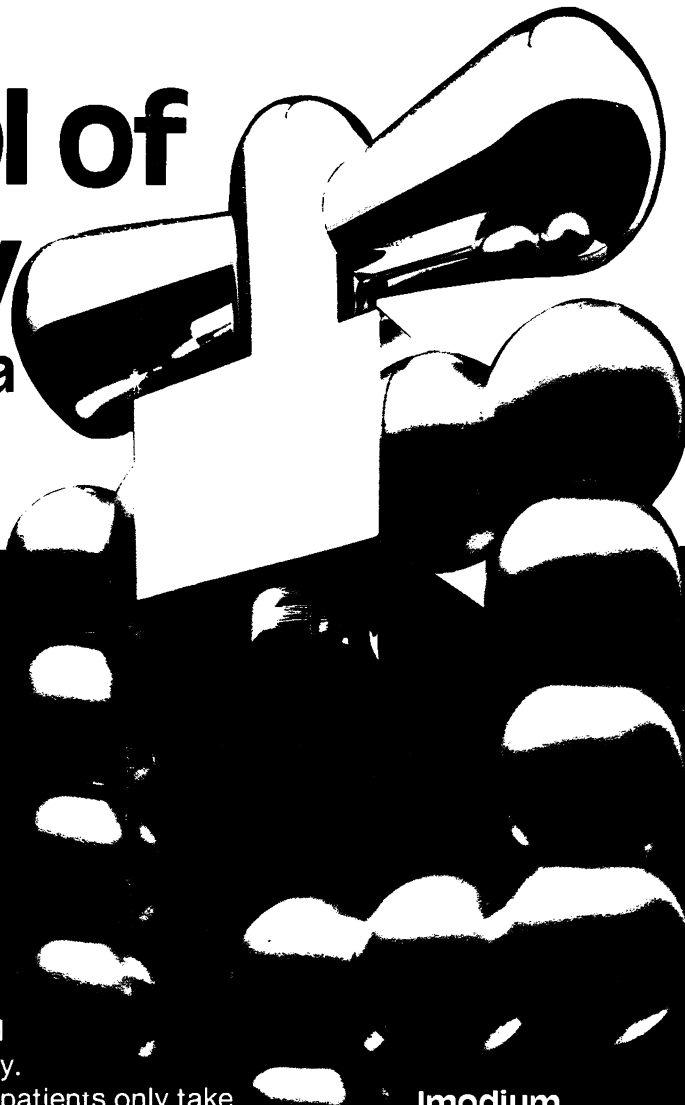


# Imodium

TRADEMARK

(loperamide hydrochloride)

**symbol of  
accuracy**  
in acute diarrhoea



Imodium's specific action  
controls diarrhoea, relieving pain and  
abdominal cramps rapidly and effectively.

A tailored dosage regime means that patients only take  
Imodium when they really need it, minimising the risk of  
constipation and encouraging economy of medication.  
Patients will find Imodium capsules easy to take and the blister  
pack of just twelve capsules is convenient to carry throughout  
the working day.

**Imodium**  
**Simply Stops Diarrhoea-fast**  
**2 // stat and 1 /**  
**at each loose stool**

Further information is available from :



**JANSSEN PHARMACEUTICA**  
2340 Beerse, Belgium

or

**JANSSEN PHARMACEUTICAL LTD.**  
Marlow, Bucks. SL7 1ET.

**Presentation :**

Hard gelatin capsules containing 2 mg loperamide hydrochloride and syrup containing 1 mg loperamide hydrochloride per 5 ml.

**Indications :**

Imodium\* is indicated for the symptomatic control of acute diarrhoea of any aetiology.

**Contra-indications and warnings etc. :**

There are no specific contraindications to Imodium\*. Studies in animals have shown no abnormal teratogenic effects; however the use of loperamide during pregnancy is subject to the usual precautions. In trials, no side effects have been reported that can reliably be distinguished from the symptoms of the gastro-intestinal disorder being treated. As persistent diarrhoea can be an indicator of potentially more serious conditions, Imodium\* should not be used for prolonged periods until the underlying cause of the diarrhoea has been investigated.

**Dosage and Administration :**

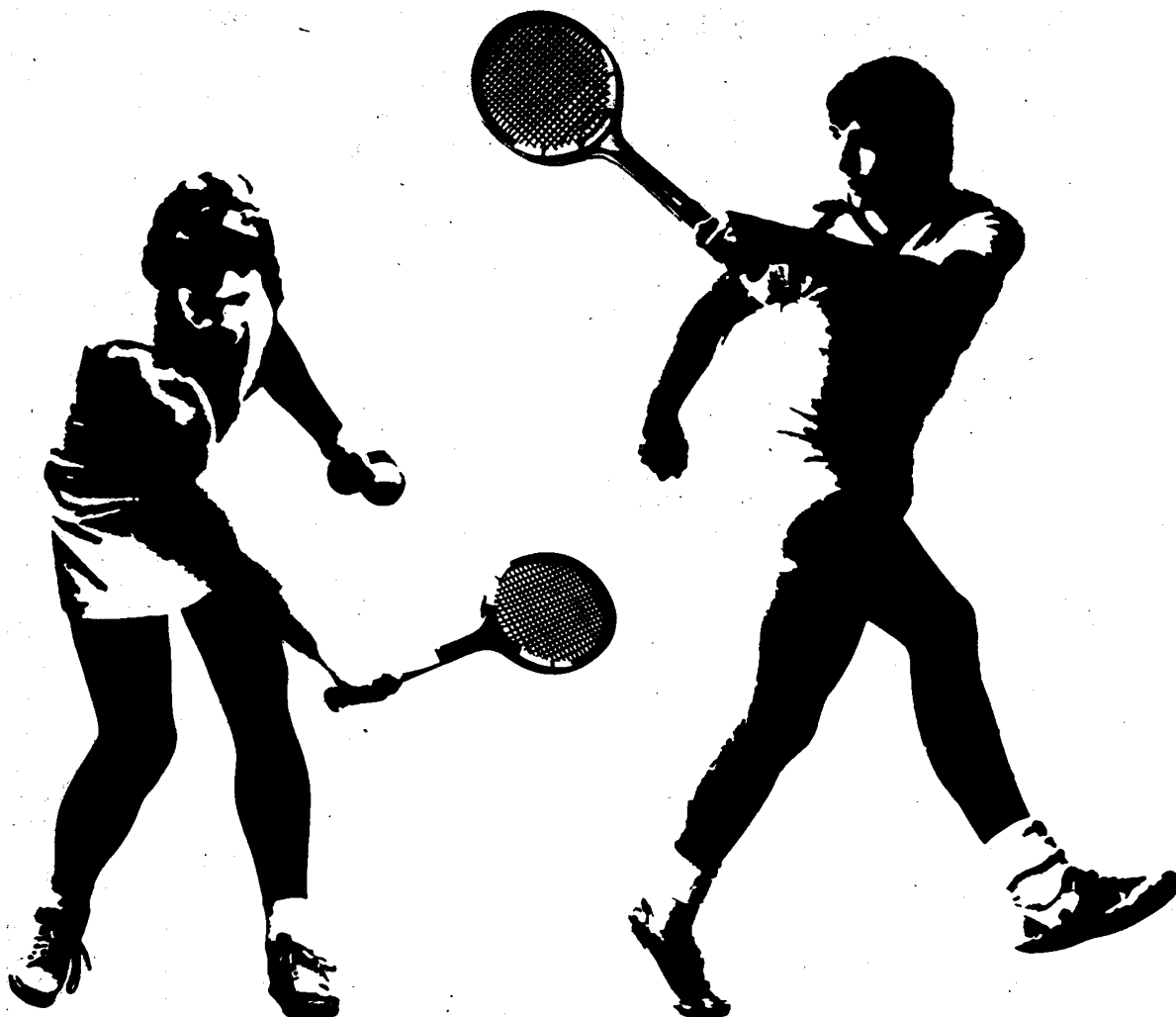
**Acute Diarrhoea : Adults :** Two capsules initially, followed by one capsule after every loose stool. The usual dosage is 3 to 4 capsules a day; the maximum daily dose should not exceed 8 capsules. **Children :** 4 to 8 years : Syrup 5 ml four times daily until diarrhoea is controlled; in children under 8 years, further investigation may be necessary if diarrhoea has not responded to three days' treatment. 9 to 12 years : Syrup 10 ml (or 1 capsule) four times daily until diarrhoea is controlled.

**Basic NHS Cost :**

12 capsules (ex 250 pack) 104p. (correct at time of printing)

**Product Licence Numbers :**

Capsules 0242/0028 - Syrup 0242/0040



# LOPRESORETIC<sup>®</sup>

metoprolol tartrate and chlorthalidone BP

## FOR HYPERTENSION

**Presentation** Off-white, round, film-coated tablets containing 100mg metoprolol tartrate and 12.5mg chlorthalidone BP. **Indications** Mild and moderate hypertension. **Dosage** Initially two tablets in the morning, occasionally it may be beneficial to raise the dosage to three or four tablets daily given in single or divided doses. **Contra-indications** Atrioventricular block of second or third degree, marked bradycardia, cardiogenic shock, uncontrolled heart failure, marked renal insufficiency, lithium therapy. **Side-effects** Lopresoretic is well tolerated with a low incidence and severity of side-effects. However, slight gastro-intestinal discomfort, sleep disturbances, nausea, dizziness and bradycardia may occasionally occur. There have been a few reports of skin rashes and/or dry eyes associated with the use of beta-adrenoceptor blocking drugs. Usually the symptoms clear on withdrawal of treatment. Chlorthalidone may cause latent gout or latent diabetes to become manifest; a few cases of allergic skin reactions, mild anorexia, nausea, constipation and diarrhoea have been reported and, rarely, thrombocytopenia and leucopenia. **Precautions** Although Lopresoretic contains a selective beta-blocker caution should be observed when treating patients with chronic obstructive pulmonary disease and impaired carbohydrate metabolism. Patients with cardiac failure must be effectively digitalised. Caution in patients with renal failure, metabolic acidosis or those undergoing surgery. Cessation of therapy with a beta-blocker should be gradual. As with all drugs Lopresoretic should only be used during pregnancy if there are compelling reasons. **Packs** Lopresoretic (PL 0001/0085) Calendar packs of 56 tablets £7.44. Further information is available on request from Geigy Pharmaceuticals, Horsham, West Sussex.

**GEIGY**