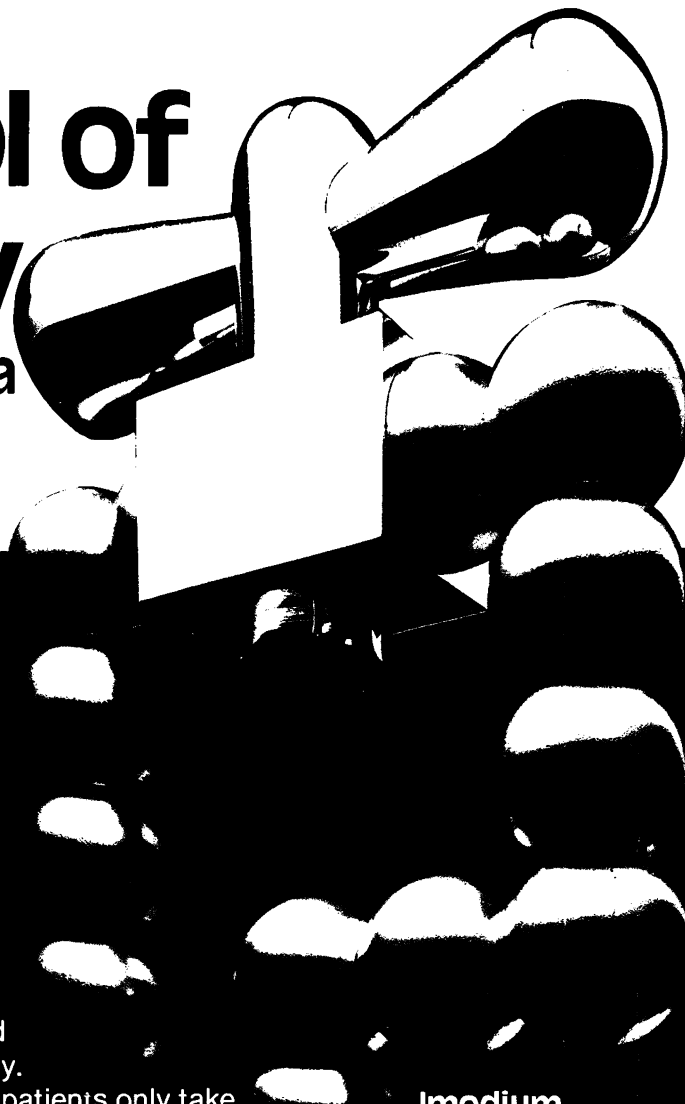


Imodium

TRADE MARK

(loperamide hydrochloride)

symbol of
accuracy
in acute diarrhoea



Imodium's specific action controls diarrhoea, relieving pain and abdominal cramps rapidly and effectively.

A tailored dosage regime means that patients only take Imodium when they really need it, minimising the risk of constipation and encouraging economy of medication. Patients will find Imodium capsules easy to take and the blister pack of just twelve capsules is convenient to carry throughout the working day.

Imodium
Simply Stops Diarrhoea - fast
2 // stat and 1 /
at each loose stool

Further information is available from :



JANSSEN PHARMACEUTICA
2340 Beerse, Belgium

or

JANSSEN PHARMACEUTICAL LTD.
Marlow, Bucks. SL7 1ET.

Presentation :

Hard gelatin capsules containing 2 mg loperamide hydrochloride and syrup containing 1 mg loperamide hydrochloride per 5 ml.

Indications :

Imodium* is indicated for the symptomatic control of acute diarrhoea of any aetiology.

Contra-indications and warnings etc. :

There are no specific contraindications to Imodium*. Studies in animals have shown no abnormal teratogenic effects, however the use of loperamide during pregnancy is subject to the usual precautions. In trials, no side effects have been reported that can reliably be distinguished from the symptoms of the gastro-intestinal disorder being treated. As persistent diarrhoea can be an indicator of potentially more serious conditions, Imodium* should not be used for prolonged periods until the underlying cause of the diarrhoea has been investigated.

Dosage and Administration :

Acute Diarrhoea - Adults : Two capsules initially, followed by one capsule after every loose stool. The usual dosage is 3 to 4 capsules a day, the maximum daily dose should not exceed 8 capsules. **Children :** 4 to 8 years - Syrup 5 ml four times daily until diarrhoea is controlled. In children under 8 years, further investigation may be necessary if diarrhoea has not responded to three days' treatment. 9 to 12 years - Syrup 10 ml (or 1 capsule) four times daily until diarrhoea is controlled.

Basic NHS Cost :

12 capsules (ex 250 pack) 104p. (correct at time of printing)

Product Licence Numbers :

Capsules 0242/0028 - Syrup 0242/0040

© JPL/037/80

* Trademark

Developments in Immunopathology

*The Proceedings of a Symposium organized by
The Royal College of Pathologists*

Edited by E. J. Holborow

Immunodeficiency—Maturation of the immune system and immunodeficiency • Pathogenesis of hypogammaglobulinaemia with thymoma and late-onset hypogammaglobulinaemia • Combined immunodeficiency and thymic abnormalities • Mechanisms in secondary hypogammaglobulinaemia • Diagnosis of defects of antibody production • Infection of immunosuppressed patients • **Lymphocytes. 1 Function**—Genetic restrictions in the immune response • Lymphocyte function and virus infections • **Lymphocytes. 2 Differentiation**—Differentiation of lymphoid precursor cells • Functional subsets of lymphocytes • **Lymphocytes. 3 Distribution**—Distribution of lymphocytes in health • Distribution of malignant lymphoid cells • **Roy Cameron Lecture**—Control of antibody formation: certain uncertainties • **Antibody-mediated tissue damage**—Hyperviscosity and other complications of paraproteinaemia • Tissue-specific autoantibodies in haemolytic anaemia • Tissue-specific antibodies in myasthenia gravis • Antinuclear acid antibodies • Lymphocytotoxic antibodies in systemic lupus erythematosus: their clinical significance • Complement activation profiles in disease • Antibody affinity: immunogenetic aspects and relationship to immune complex disease • **Therapeutic aspects**—Immunosuppression in established humoral responses

Price: Inland £7.50; Abroad US\$18.75, including postage

Payment must be enclosed with order or a surcharge of 50p will be made for rendering invoices and statements

The Publisher, *Journal of Clinical Pathology*, B.M.A. House, Tavistock Square, London WC1H 9JR

THE BRITISH JOURNAL OF FAMILY PLANNING

The Official Journal of the
National Association of Family Planning Doctors

CO-EDITORS: Dr. Ruth Skrine and Dr. Mary Pollock

The British Journal of Family Planning is a quarterly journal which publishes original papers and review articles by leading authorities on a wide range of relevant subjects. Clinical meetings are reported, and papers of particular interest are often published in full. Each issue contains notices of training courses and future meetings, reviews of important publications and a lively correspondence section. There is often a column contributed by the Institute of Psycho-Sexual Medicine.

The journal serves as a channel of communication between the council of the National Association of Family Planning Doctors and the members. These include doctors working in hospitals, general practice and N.H.S. and private clinics. Consultants from many of the medical specialities are among the membership which now totals nearly 2,000 and is growing rapidly. Health authorities and postgraduate medical centres are subscribing to the journal in increasing numbers.

The journal is published in January, April, July and October.

**Annual Subscription: Inland £12.00
Overseas US \$30.00**

Order from Professional & Scientific Publications,
Tavistock House East, Tavistock Square, London WC1H 9JR
or through any leading subscription agent.

Examination Candidates

**Revise with Success
use PASTEST PRACTICE EXAMS**

**MRCP I & II MRCGP FRCS
PLAB (UK entry exam) MRCOG**

Write for details: Dept J, PasTest Service,
P.O. Box 81,
Hemel Hempstead,
Herts, U.K.
Tel: (0442) 52113

PASTEST

ADVERTISEMENTS

PHARMACEUTICAL PRODUCTS

Readers are reminded that prescribers' literature and clinical information are always available from advertisers on request.



The nasal-block buster

FOR COLDS, RHINITIS AND SINUSITIS

ACTIFED TABLETS

triprolidine hydrochloride BP/pseudoephedrine hydrochloride BP

Indications Symptomatic relief of upper respiratory congestion in: the common cold, hay fever, vasomotor and allergic rhinitis, acute sinusitis, otitis barotrauma.

Dosage Three times a day: Adults and children over 12 years: 1 tablet or 10 ml. 6-12 years: 7.5 ml. 1-6 years: 5 ml. 3-12 months: 2.5 ml.

Contra-Indications Actifed* is contraindicated in persons under treatment with MAO inhibitors and within two weeks of stopping such treatment.

Precautions Although at recommended dosage pseudoephedrine has virtually no pressor effects in normotensive subjects, Actifed should be used with caution in patients with cardiovascular disorders. As with other antihistamine-containing

preparations, drowsiness may occur. In some patients the action of antihistamines may be potentiated by alcohol.

Presentation Each Actifed tablet contains 2.5 mg triprolidine hydrochloride and 60 mg pseudoephedrine hydrochloride. PL3/5003.

Each 5 ml of Actifed Syrup contains 1.25 mg triprolidine hydrochloride and 30 mg pseudoephedrine hydrochloride. PL3/5004.

Additional information is available on request.

Wellcome Medical Division
The Wellcome Foundation Ltd., Crewe, Cheshire.



*Trade Mark

Just published

PROCEDURES IN PRACTICE

An illustrated step-by-step guide for doctors making their first attempts at the procedures commonly used in hospital practice. The articles explain the techniques in detail and give indications and contraindications for a range of tasks from setting up a drip to aspirating bone marrow.

The articles have been collected into book form in the same format as they appeared in the BMJ.

Price: Inland £4.00;
Overseas US\$19.00*
(Inland £3.50;
Overseas US\$17.50* for
BMA members)

**including air mail postage*

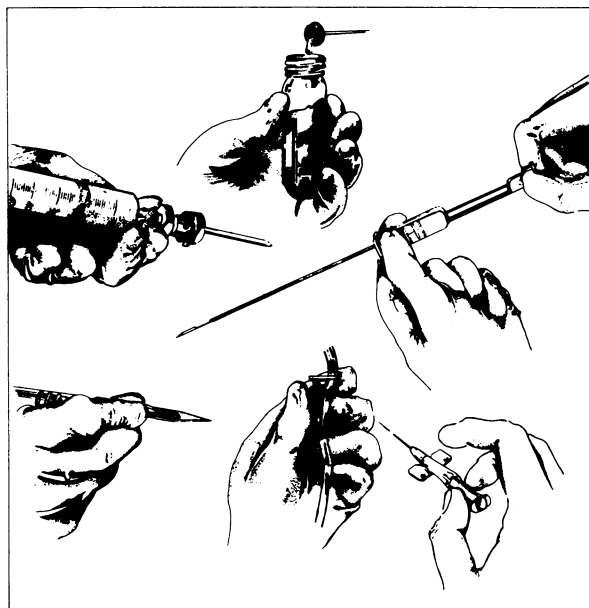
Order your copy now

From: The Publisher,
British Medical Journal,
BMA House,
Tavistock Square,
London WC1H 9JR

or any leading bookseller

PROCEDURES IN PRACTICE

ARTICLES FROM THE BRITISH MEDICAL JOURNAL



NATRILIX[®]

indapamide

a primary antihypertensive agent

Natrilix offers a simple, effective means of controlling blood pressure both in newly diagnosed and in poorly controlled patients with mild to moderate hypertension

Prescribing information

Presentation

Pink biconvex sugar-coated tablets each containing 2.5 mg indapamide hemihydrate.

Uses

For the treatment of hypertension.

Dosage and administration

Adults

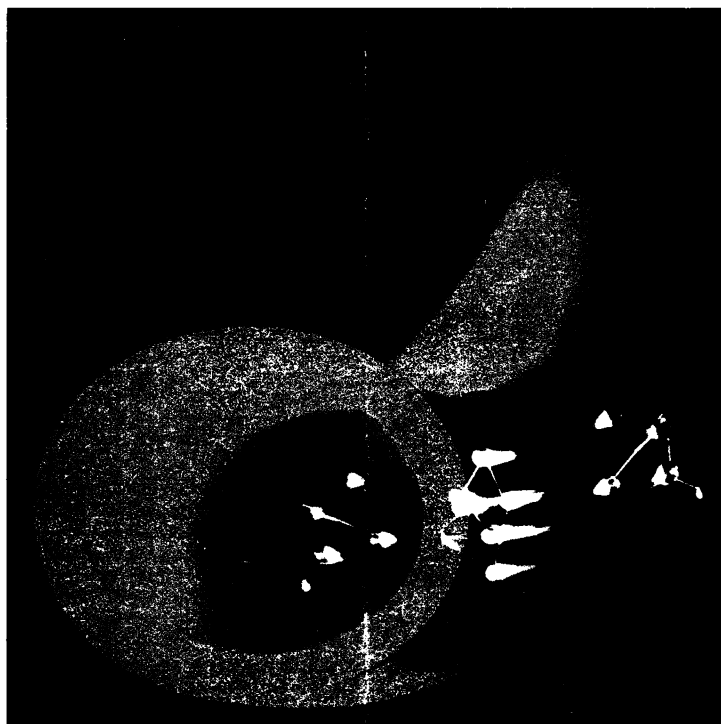
The dosage is one tablet daily to be taken in the morning.

Children

There is no experience of the use of this drug in children.

Contra-indications, warning, etc.

There are no absolute contra-indications to the use of Natrilix but caution should be exercised when prescribing it in cases of severe renal or hepatic impairment. As with all new drugs, the administration of Natrilix should be avoided during pregnancy although no teratological effects have been seen in animals. At doses higher than that recommended, Natrilix has a diuretic effect, therefore it is not recommended to prescribe it with a diuretic agent which may cause hypokalaemia. Also, slight weight loss has been reported in some patients taking Natrilix. Reported side effects have included nausea and headache,



but they are generally uncommon and mild in nature.

Serum urate levels may rise slightly but there is no evidence that glucose tolerance is adversely affected.

Box of 30 tablets.

Product licence number 0093/0022.

NATRILIX is available as: FLUDEX[®] in Africa, Belgium, France, Holland, Portugal, Switzerland.

NATRILIX[®] in English speaking Countries of Africa, Brazil, Central America, Germany, Ireland, Italy, Middle East, South East Asia, United Kingdom.

TERTENSIF[®] in Spain.

NATRIX[®] in Korea.

Further information is available on request from Servier Laboratories Ltd., Servier House, Horsenden Lane South, Greenford, Middx. UB6 7PW.



Les Laboratoires Servier, 22, rue Garnier - 92201 Neuilly - France.

one tablet daily

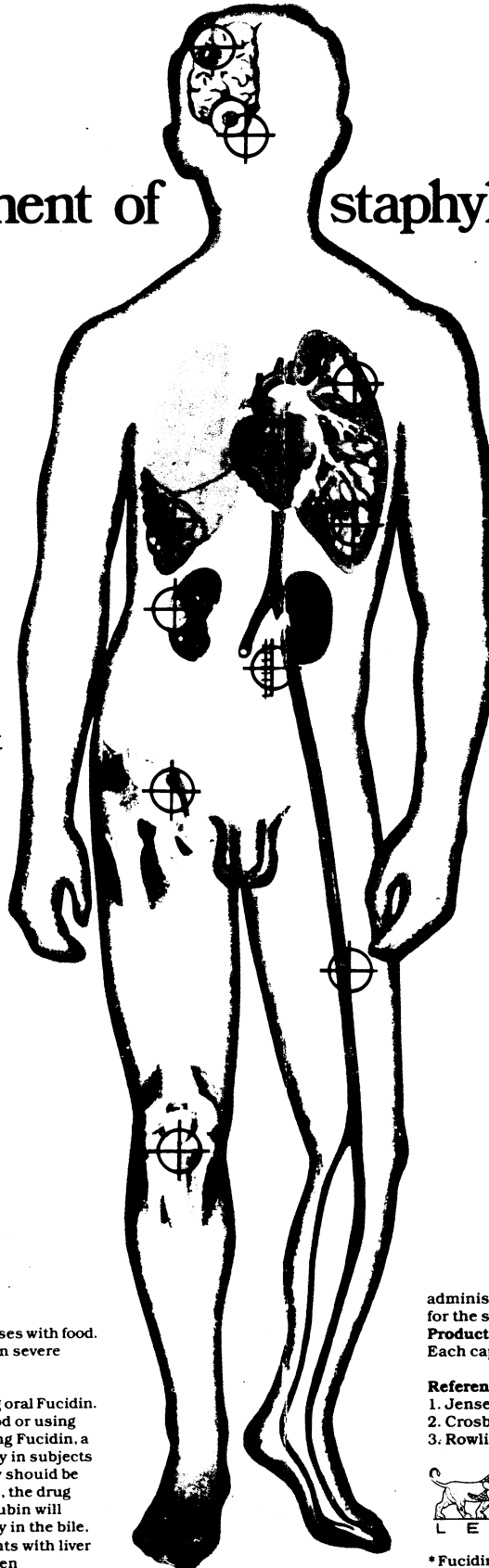
WHY NOT SUBSCRIBE TO THE SPECIALIST JOURNALS PUBLISHED BY THE BMA:—A SELECTION INCLUDES

Annals of the Rheumatic Diseases, British Journal of Venereal Diseases, Thorax, Journal of Epidemiology and Community Health, British Journal of Industrial Medicine.

FULL DETAILS OF SUBSCRIPTION RATES FROM BMA SPECIALIST PUBLICATIONS: BMA HOUSE, TAVISTOCK SQUARE, LONDON WC1H 9JR
TELEPHONE 01-387 4499 EXT. 309.

sodium fusidate B.P.

For the treatment of staphylococcal infection



‘... (staphylococci) form focal, often necrotic lesions, where they are protected from the defence mechanism of the body and shielded from efficient chemotherapy.’

‘... Fucidin exerts a potent antibacterial effect even in the presence of large collections of pus, into which it apparently penetrates in effective concentrations.’

‘... Fucidin, which has the ability to penetrate in significant amounts into tissues carrying a poor blood supply, ...’

- Brain abscess
- Hypopyon
- Endophthalmitis
- Lung abscess
- Endocarditis
- Pneumonia with abscess
- Empyema
- Renal carbuncle
- Deep wound infection
- Septic arthritis
- Foreign bodies } grafts
 } prostheses
- Osteomyelitis
- Diabetic gangrene

Oral dosage:

Adults: 500mg (2 capsules) 3 times daily with food.
Children: 20-40mg/kg body weight daily in 3 divided doses with food.
The standard dose may be doubled for initial therapy in severe infections.

Adverse reactions and precautions:

Gastro-intestinal upset occurs in some patients taking oral Fucidin. This can be minimised by taking the capsules with food or using Fucidin Enteric Coated Tablets. In some patients taking Fucidin, a reversible jaundice has been reported, most frequently in subjects receiving intravenous therapy. In general, oral therapy should be instituted as soon as possible. If the jaundice persists, the drug should be withdrawn, following which the serum bilirubin will invariably return to normal. Fucidin is excreted mainly in the bile, and liver function tests should be carried out in patients with liver dysfunction, when used for prolonged periods and when

administered in conjunction with other drugs which may compete for the same excretory pathway.

Product Licence No: 0043/5019

Each capsule contains 250mg sodium fusidate B.P.

References:

1. Jensen, K., and Lassen, H.C.A. *Ann. Intern. Med.*, **60**, 790, 1964.
2. Crosbie, R. B., *Br. Med. J.*, **1**, 788, 1963.
3. Rowling, D. E., *J. Bone Joint Surg.*, **52B**, 302, 1970.



Leo Laboratories Limited
Longwick Road, Princes Risborough
Aylesbury, Bucks HP17 9RR

* Fucidin is a trademark